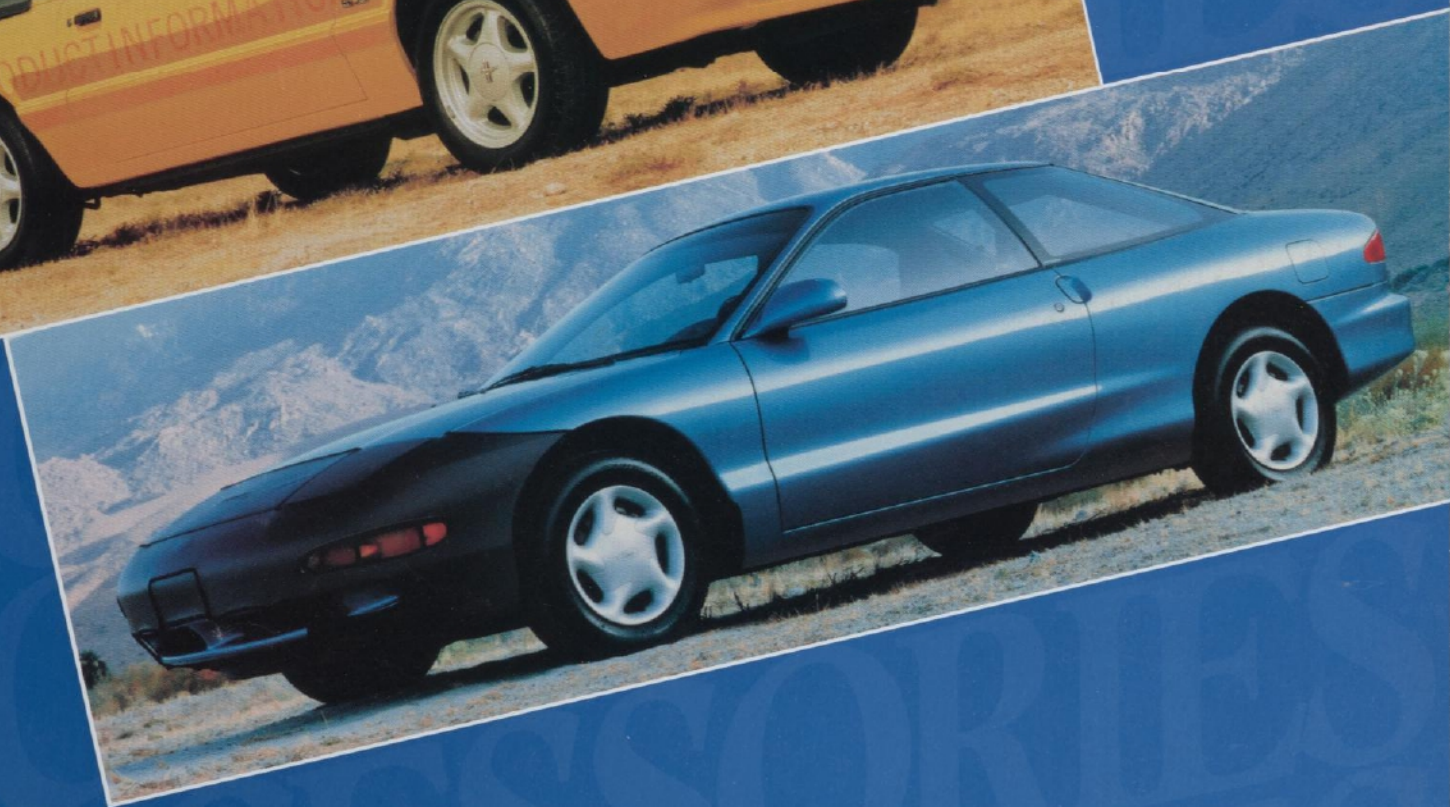
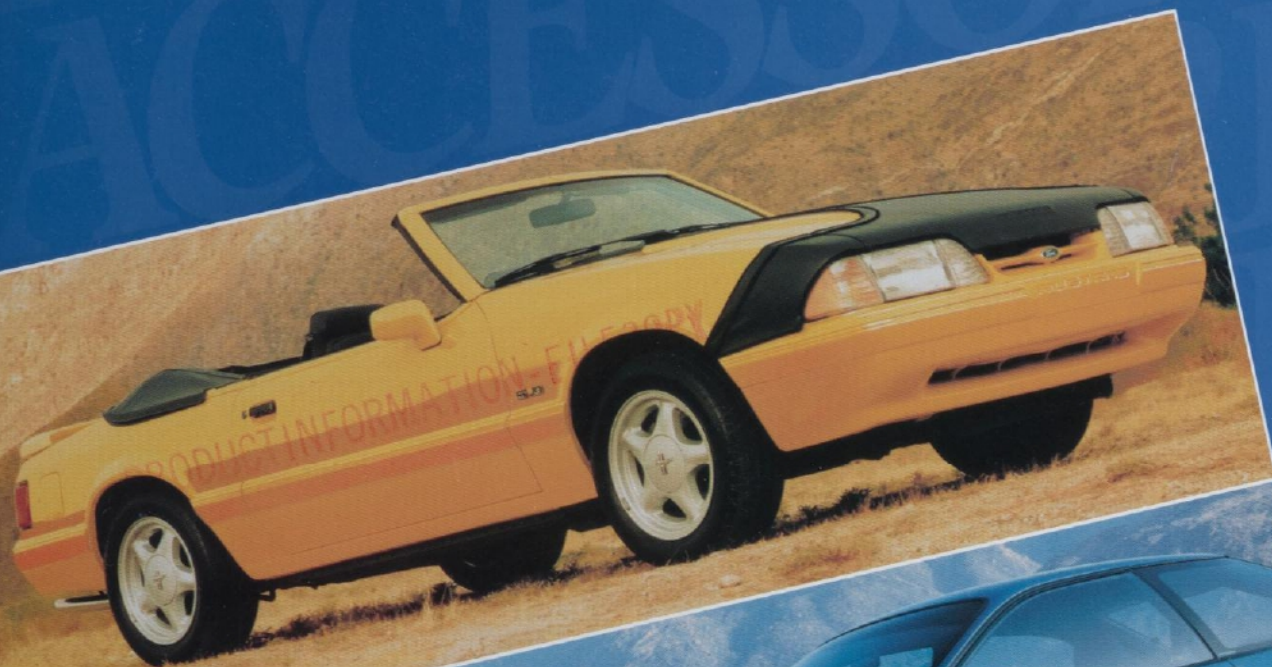


1 9 9 3
F O R D C A R S

M U S T A N G
P R O B E



Take a closer look at Quality...WE DO!

Take a closer look at Quality...

At Ford, we believe that quality should be the most important factor in choosing automotive accessories. That's why "Take a closer look at Quality...WE DO!" is more than just a slogan. It's an invitation **and** a promise.

Like all Ford Motor Company products, Ford brand Accessories are intended to help fulfill your automotive needs. They are custom designed and engineered to complement the style and quality of your Ford-built vehicle. Extensive research and testing are used to select only those products that meet or exceed our strict engineering specifications. Before an accessory can earn the distinction of "wearing" the Ford oval, it must undergo a rigorous battery of tests designed to help ensure high quality of materials and workmanship, proper fit/finish and safety.

These unbending standards allow us to offer one of the best accessory warranties in the business — up to 3 years or 36,000 miles (whichever occurs first). See Warranty Information below for more details.

Our strong commitment to quality lets us stand behind Ford brand Accessories with confidence and pride. So go ahead, "Take a closer look at Quality..." take a closer look at Ford brand Accessories.

Order With Ease

For your convenience, all Ford brand Accessories are available through your Ford dealer's parts department. In addition, many of the products displayed in this catalog can be ordered by phone or mail. Please refer to the back of the Dealer "Thank You" letter for more details.

When placing your order, please provide as much information as available. This will help facilitate the ordering process and help ensure that you receive the proper accessory application(s) for your vehicle.

A Word About Prices

Accessory prices may vary depending on your specific vehicle and differences in style, size and adapting kits. Please refer to the Accessory Pricing Index located on the inside back cover of this catalog for current pricing and application information.

All phone and mail orders will be charged a non-refundable handling fee of \$3.50.

NOTE: Installation costs are not included in Suggested Retail Prices. These costs are the responsibility of the customer.

Warranty Information

Ford Motor Company will repair or replace any properly installed Ford brand Accessory found defective in factory-supplied material or workmanship during the warranty period, as well as any component damaged by the defective accessory. The accessory will be warranted for whichever provides the greater benefit:

- 12 months or 12,000 miles (whichever occurs first)
- the remainder of your new vehicle limited warranty

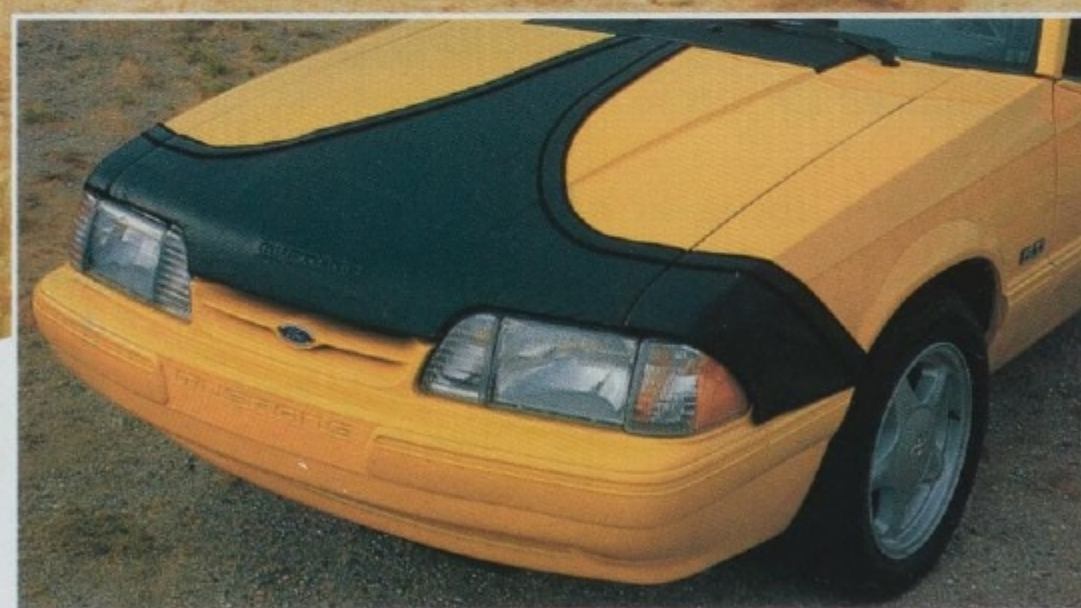
This means that Ford brand Accessories purchased along with your new vehicle and installed by your dealer are covered for up to the full length of your new vehicle limited warranty — 3 years or 36,000 miles (whichever occurs first). Contact your dealer for complete warranty coverage information.

NOTE: The prices, descriptions and specifications in this catalog were in effect at the time of printing. Our policy is one of continuous improvement and we reserve the right to change specifications, design or price without notice and without incurring obligation.

TABLE OF CONTENTS

MUSTANG ACCESSORIES	2-5
Air Conditioning	5
Door Edge Guards	5
Engine Block Heater	5
Floor Mats, Carpeted	5
Floor Mats, Custom Rubber	5
Floor Mats, Universal	5
Front End Bikini Hood Cover	2
Front End Cover	3
Front End Mini-Mask	3
Rack, Multi-Sport Removable and Carrier Adapters ...	4
Remote Keyless Entry System	4
Splash Guards	3
Styled Wheel Protector Locks	4
Sunroof	3
Vehicle Security Systems	4
PROBE ACCESSORIES	6-8
Air Conditioning	7
Engine Block Heater	8
Floor Mats, Carpeted	7
Floor Mats, Universal	8
Front End Cover	6
Remote Keyless Entry System	7
Splash Guards, Premium	8
Styled Wheel Protector Locks	8
Vehicle Security Systems	7

1 9 9 3 M U S T A N G A C C E S S O R I E S



Bikini Hood Cover.

Attractive, tapered cover helps guard Mustang front hood surfaces against airborne debris. Made of heavy-duty black vinyl backed by soft, non-woven white flannel. Features embossed vehicle name.



A

A. Front End Cover.

This custom fit Front End Cover complements Mustang's sporty design as it helps shield the front end finish from nicks and dings. Made of heavy-duty black vinyl with a soft, non-woven white flannel backing and embossed vehicle name. Features specially designed airfoils to help reduce flutter.



B

B. Mini-Mask.

Durable black vinyl mask provides the great look and protection of a conventional front end cover at a lower cost. Specially designed to help shield painted metal front end surfaces. Features soft flannel backing, embossed vehicle name and built-in airfoils designed to help reduce mask flutter.



C

C. Sunroof.

Always a sporty favorite, our pop-up Sunroof provides fresh air in the summer and solar heating in the winter. Sturdy, double-frame aluminum design offers added durability with factory-installed appearance. Glass can be completely removed for open-air traveling. Dealer installation recommended.



D

D. Splash Guards.

A low cost way to help protect your Mustang's finish from mud, salt and other road debris. Available in black polyethylene (no imprint) or black vinyl with a choice of three white imprints: Ford oval, Ford block lettering or vehicle name. Packaged in pairs.

ACT NOW! ORDER TODAY! CALL 1-800-346-0000

A. Vehicle Security Systems.

Help protect your Mustang against theft and damage with the only vehicle security systems approved by Ford. Five state-of-the-art systems (along with optional accessories) offer a complete range of features to meet your security needs. Dealer installation recommended. **Note:** Vehicles equipped with security systems may be eligible for insurance discounts in some states.

B. Remote Keyless Entry System.

Luxurious convenience is at your fingertips with Ford's Remote Keyless Entry 100. System includes two pocket-size remote control transmitters that lock and unlock your Mustang's doors and trunk from up to 50 ft. away. Dealer installation recommended. **Note:** Requires power door locks and power trunk release for full system operation.

C. Styled Wheel Protector Locks.

Kit features four corrosion-resistant zinc-plated steel locking nuts designed to help protect your Mustang's aluminum wheels and tires against theft. Locks replace one lug nut on each wheel; key included.

D. Multi-Sport Removable Rack.

Lightweight, durable rack combines with specialized adapters (described below) to let you take your favorite recreational equipment along for the ride. Optional locking knobs help prevent theft (must be ordered separately). Easily installed and removed.

Multi-Sport Carrier Adapters.

Choose from four models. Our upright Bike Adapter holds one road or mountain bike and features a built-in lock. Ski/Snowboard Adapters are available in two sizes: one safely transports up to four pairs of skis or one snowboard, the other holds as many as six pairs of skis or two snowboards. Both include standard locks. The versatile Watersport Adapter can accommodate a sailboard, canoe or kayak (tie-down belts, boom clips and built-in oar, paddle or mast holders included). Adapters attach easily and securely to rack crossbars. **Note:** Only available for Mustangs equipped with the Multi-Sport Removable Rack.



E. Carpeted Floor Mats.

Plush carpeted mats offer an exact fit and color match with your Mustang's interior. Special backing is designed to help prevent slipping. Available in opal, blue, ruby red and ebony. Packed in pairs for front or rear.

F. Custom Rubber Floor Mats.

Stylish, economical rubber floor mats designed to complement most Mustang interior colors and provide a custom made look. Available in black, blue, red and brown. Each set includes two front or rear mats.

G. Universal Floor Mats.

These durable mats feature rich polypropylene carpet with a sewn, matching vinyl edge binding. Nibbed backing helps hold mats in place. Available with or without imprinted Ford oval in sand beige, cinnabar, cabernet, scarlet, regatta blue, smoke, titanium and raven. Four mats per set.

H. Genuine Ford Air Conditioning.

Dealer-installed unit offers optimum driving comfort with factory-installed appearance for Mustang owners. Only available through your Ford dealer.

I. Door Edge Guards.

Preformed polished aluminum guards help shield door edges from potential nicks and dings. Designed to fit the exact contours of your vehicle's doors.

J. Engine Block Heater.

An enclosed heater coil installs permanently in your Mustang's engine block to help provide faster winter starting with less fuel waste and battery drain. Plugs into any 110-volt outlet. Heater includes cap to protect plug when not in use. Dealer installation recommended.

1 9 9 3 P R O B E A C C E S S O R I E S



Front End Cover.

Custom fit cover helps guard against scratches, dents and dings while accentuating your Probe's streamlined body design. Made of heavy-duty black vinyl backed by soft, non-woven white flannel. Features embossed vehicle name.



A. Vehicle Security Systems.

Safeguard your investment with the only vehicle security systems authorized by Ford Motor Company. Five state-of-the-art systems (along with optional accessories) offer a full range of security features including compatibility with the factory option Remote Keyless Entry System. Dealer installation recommended. **Note:** Vehicles equipped with security systems may be eligible for insurance discounts in some states.

B. Remote Keyless Entry System.

Add a touch of luxury with Ford's Remote Keyless Entry 100. The system is activated by a pocket-size remote control unit that locks and unlocks your Probe's doors and hatch from up to 50 ft. away. Kit includes two transmitters. Dealer installation recommended. **Note:** Requires power door locks and power hatch release for full system operation.

C. Genuine Ford Air Conditioning.

Dealer-installed Air Conditioning helps create luxurious interior comfort while maintaining factory-installed appearance. Only available through your Ford dealer.



D. Carpeted Floor Mats.

Deluxe front seat floor mats designed to fit and match your Probe's interior perfectly. Special backing helps hold mats in place. Available in opal, royal blue, ruby red and ebony with embroidered vehicle name. Packaged in pairs.



ACT NOW! ORDER TODAY! CALL 1-800-346-0000

A. Universal Floor Mats.

Rich, durable mats feature polypropylene carpet with a sewn, matching vinyl edge binding. Nibbed backing helps keep mats in place. Available with or without imprinted Ford oval in sand beige, cinnabar, cabernet, scarlet, regatta blue, smoke, titanium and raven. Four mats per set.



B. Premium Splash Guards.

These heavy-duty black splash guards feature an extra wide/thick design to help protect your Probe's lower body finish from increased wheel wash created by wider tires. Molded from high-strength "TPO" material for added durability. Packaged in pairs for front or rear; each splash guard features white vehicle name.



C. Engine Block Heater.

An enclosed heater coil installs permanently in your engine block to help provide faster winter starting with less fuel waste and battery drain. Plugs into any 110-volt outlet. Includes cap to protect plug when not in use. Dealer installation recommended.



D. Styled Wheel Protector Locks.

Locks replace one lug nut on each wheel to help protect your vehicle's aluminum wheels and tires from theft. Kit includes four triple-nickel chrome-plated steel locking nuts and a special grooved key.



1993 ACCESSORIES PRICING INDEX

The following accessories are organized alphabetically by product name. Application information is provided as a guide only. Refer to the appropriate product description page for specific applications, restrictions and limitations.

Note: The prices, descriptions and applications in this index were in effect at the time it was approved for printing. The prices listed are for convenience only and are not intended to be determinative of actual retail prices. Prices are subject to change without notice.

Accessory Item	Suggested Retail Price
MUSTANG	
Air Conditioning	Contact dealership for details
Door Edge Guards	\$ 12.40
Engine Block Heater	27.60
Floor Mats:	
Carpeted (Front)	31.00
Carpeted (Rear)	18.40
Custom Rubber (Front)	16.80
Custom Rubber (Rear)	12.80
Universal	30.60
Front End Bikini Hood Cover	50.00
Front End Cover	106.00
Front End Mini-Mask	50.00
Racks and Rack Accessories:	
Multi-Sport Removable Rack	232.00
Bike Carrier Adapter	118.00
Ski/Snowboard Carrier Adapter	94.00
Watersport Carrier Adapter	68.00
Remote Keyless Entry System	164.00
Splash Guards:	
Vinyl	5.27
Polyethylene	5.60
Styled Wheel Protector Locks	31.80
Sunroof	125.00
Vehicle Security Systems:	
300 System	121.33
400 System	85.67
400K System	141.33
500 System	157.08
600 Plus System	243.33
PROBE	
Air Conditioning	Contact dealership for details
Engine Block Heater	\$ 27.60
Floor Mats:	
Carpeted (Front)	42.00
Universal	30.60
Front End Cover	106.00
Remote Keyless Entry System	164.00
Splash Guards, Premium	10.60
Styled Wheel Protector Locks	31.80
Vehicle Security Systems:	
300 System	121.33
400 System	85.67
400K System	141.33
500 System	157.08
600 Plus System	243.33

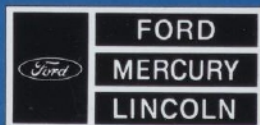
PRODUCT INFORMATION-FILE COPY

SPECIFY GENUINE FORD COLLISION REPAIR PARTS...

Genuine Ford sheet metal and plastic replacement collision parts, such as the hood, doors, fenders and bumper components, are the right choice — and for all the right reasons. Genuine Ford parts are equal to original parts in fit, finish, structural integrity and corrosion protection. Ford parts are the same as those used on new vehicles which are certified to meet all Federal Motor Vehicle Safety Standards. And all Ford sheet metal parts are covered by the exclusive Ford Lifelong Sheet Metal Guarantee. Ask your dealer to see a copy of this limited warranty. Don't settle for imitations. Ask your insurer to authorize genuine Ford collision parts.

QUALITY CAR CARE PRODUCTS...

Our premium Car Care Products are specially formulated to enhance the beauty and performance of Ford-built vehicles. Each product is thoroughly tested by Ford engineers to ensure it meets or exceeds the engineering, performance and safety specifications of today's high-tech vehicles. In fact, these convenient, top-of-the-line products are the same ones used by Ford and Lincoln-Mercury dealers across the United States. So contact your dealer today and insist on genuine Ford Car Care Products.



QUALITY CARE

It may be your car,
but it's still our baby.SM