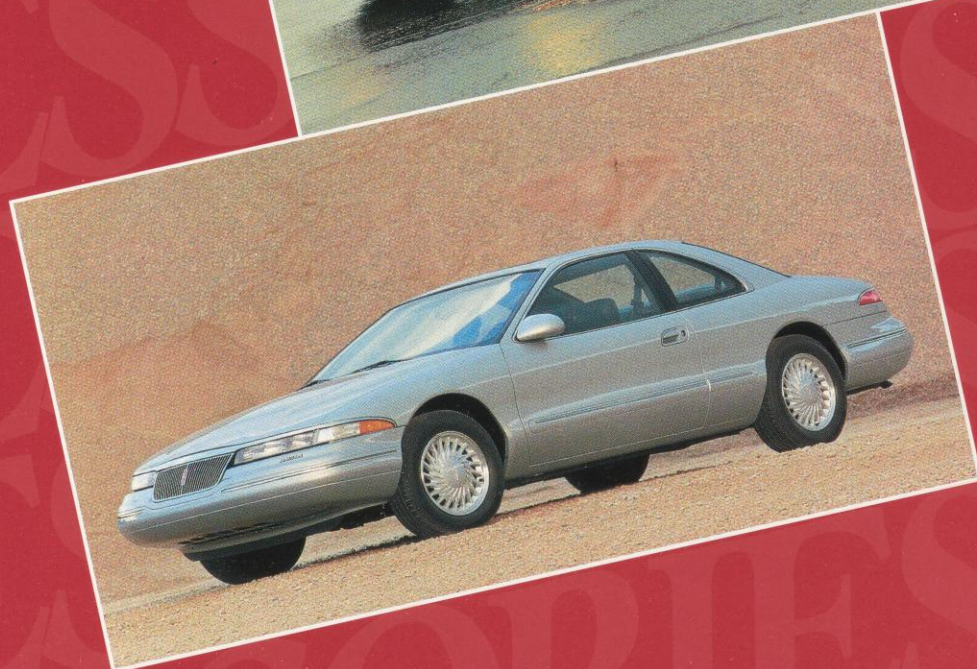


1 9 9 3  
L I N C O L N

C O N T I N E N T A L  
T O W N C A R  
M A R K V I I I



Take a closer look at Quality...WE DO!



### Take a closer look at Quality...

At Ford, we believe that quality should be the most important factor in choosing automotive accessories. That's why "Take a closer look at Quality...WE DO!" is more than just a slogan. It's an invitation **and** a promise.

Like all Ford Motor Company products, Ford brand Accessories are intended to help fulfill your automotive needs. They are custom designed and engineered to complement the style and quality of your Ford-built vehicle. Extensive research and testing are used to select only those products that meet or exceed our strict engineering specifications. Before an accessory can earn the distinction of "wearing" the Ford oval, it must undergo a rigorous battery of tests designed to help ensure high quality of materials and workmanship, proper fit/finish and safety.

These unbending standards allow us to offer one of the best accessory warranties in the business — up to 4 years or 50,000 miles (whichever occurs first), depending upon vehicle application.\* See Warranty Information below for more details.

Our strong commitment to quality lets us stand behind Ford brand Accessories with confidence and pride. So go ahead, "Take a closer look at Quality..." take a closer look at Ford brand Accessories.

### Order With Ease

For your convenience, all Ford brand Accessories are available through your Lincoln-Mercury dealer's parts department. In addition, many of the products displayed in this catalog can be ordered by phone or mail. Please refer to the back of the Dealer "Thank You" letter for more details.

**When placing your order, please provide as much information as available. This will help facilitate the ordering process and help ensure that you receive the proper accessory application(s) for your vehicle.**

### A Word About Prices

Accessory prices may vary depending on your specific vehicle and differences in style, size and adapting kits. Please refer to the Accessory Pricing Index located on the inside back cover of this catalog for current pricing and application information.

All phone and mail orders will be charged a non-refundable handling fee of \$3.50.

**NOTE: Installation costs are not included in Suggested Retail Prices. These costs are the responsibility of the customer.**

### Warranty Information

Ford Motor Company will repair or replace any properly installed Ford brand Accessory found defective in factory-supplied material or workmanship during the warranty period, as well as any component damaged by the defective accessory. The accessory will be warranted for whichever provides the greater benefit:

- 12 months or 12,000 miles (whichever occurs first)
- the remainder of your new vehicle limited warranty

This means that Ford brand Accessories purchased along with your new vehicle and installed by your dealer are covered for up to the full length of your new vehicle limited warranty — as long as 4 years or 50,000 miles (whichever occurs first), depending upon vehicle application.\* Contact your dealer for complete warranty coverage information.

**NOTE: The prices, descriptions and specifications in this catalog were in effect at the time of printing. Our policy is one of continuous improvement and we reserve the right to change specifications, design or price without notice and without incurring obligation.**

\* The Lincoln new vehicle limited warranty provides "bumper-to-bumper" coverage for 4 years or 50,000 miles (whichever occurs first). Mercury vehicles are covered for 3 years or 36,000 miles (whichever occurs first).



1 9 9 3  
L I N C O L N  
A C C E S S O R I E S





### A. Vehicle Security Systems.

Protect your investment with the only vehicle security systems authorized by Ford Motor Company. Five state-of-the-art systems (along with optional accessories) offer a full range of security features including compatibility with the factory-installed Remote Keyless Entry System. Dealer installation recommended. **Note:** Vehicles equipped with security systems may be eligible for insurance discounts in some states.

### B. Remote Keyless Entry System.

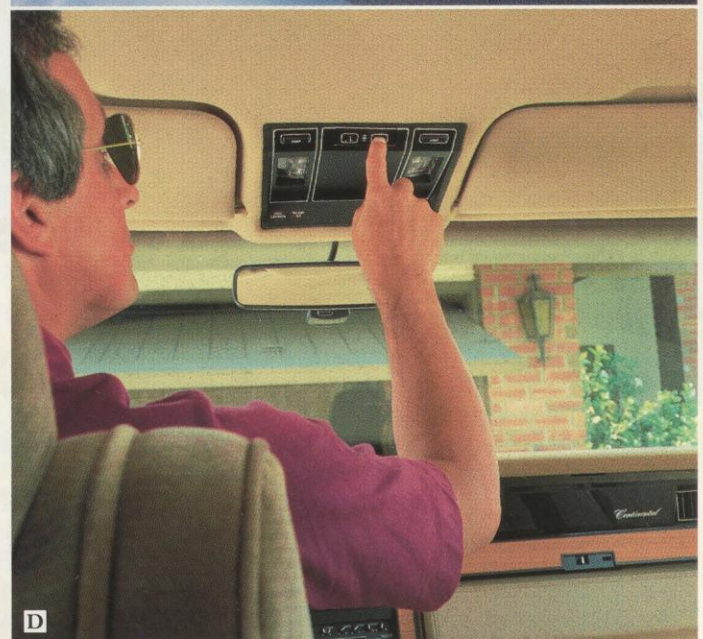
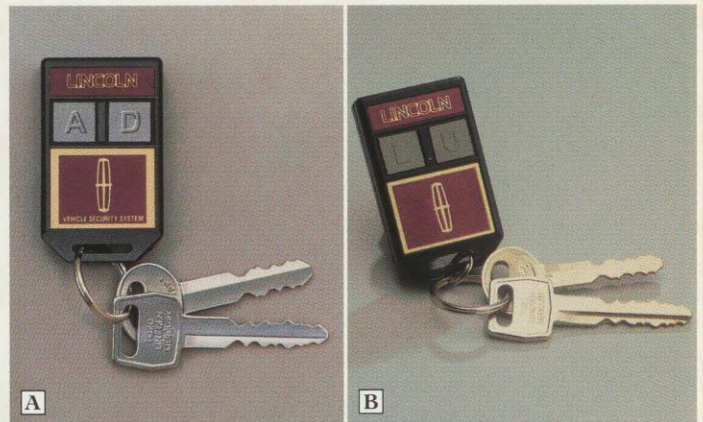
Luxurious convenience is at your fingertips with Remote Keyless Entry 100. The system is activated by a pocket-size remote control transmitter that locks and unlocks your vehicle's doors and trunk from up to 50 ft. away. Each unit includes two transmitters. Dealer installation recommended.

### C. Storage/Beverage Console.

This stylish black plastic console provides added convenience inside your Lincoln Continental. Includes two cup/mug holders, eight cassette/compact disc slots and two small trays with storage space for keys, loose change or other small items. Front panel is personalized with Lincoln logo.

### D. Garage Door Opener.

Remote control transmitter fits conveniently in overhead console (Continental and Mark VIII) or mounts in a specially designed case that clips to the sun visor (Town Car). Kit also includes separate receiver ready for integration into your existing automatic door opening system.







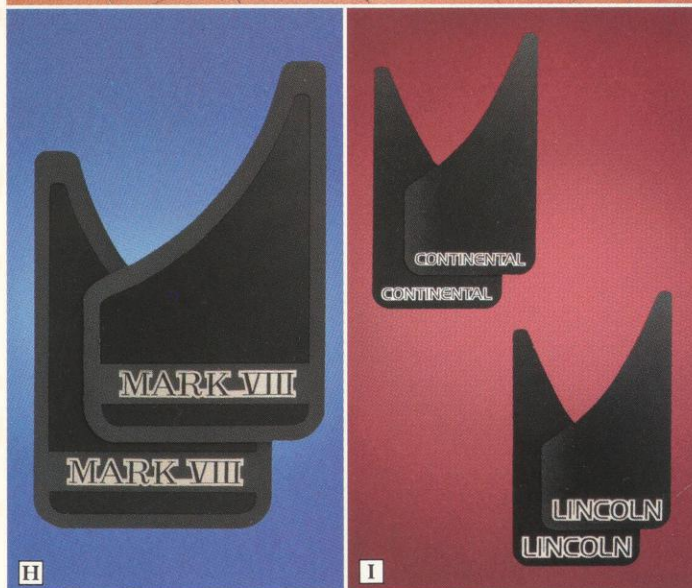
E



F



G



H

I

### **Carpeted Floor Mats.**

Deluxe, custom fit floor mats feature plush carpet color-keyed to match your vehicle interior perfectly. Specially designed backing helps keep mats in place. Packed in pairs for front or rear.

**E.** Available for Lincoln Continental in opal, black, aqua blue, shadow blue, cranberry and mocha.

**F.** Lincoln Town Car mats available in opal, black, aqua blue, shadow blue, cranberry, mocha, white/opal, white/shadow blue and white/cranberry for Executive and Signature models; opal and cranberry for Cartier models; and white/green for Jack Nicklaus models.

**G.** Available for Mark VIII in opal, black, aquamarine, cranberry and mocha with embroidered vehicle name.

### **H. Premium Splash Guards.**

These heavy-duty black splash guards feature an extra wide/thick design to help protect your Mark VIII's lower body finish from increased wheel wash created by wider tires. Molded from high-strength "TPO" material for added durability. Packaged in pairs for front or rear; each splash guard features white vehicle name.

### **I. Splash Guards.**

An economical way to help shield your vehicle's finish from potential damage by mud, gravel and other road debris. Available in black vinyl with white imprint for Continental (vehicle name) and Town Car (Lincoln); available in black polyethylene (no imprint) for Town Car and Mark VIII. Packaged in pairs.

ACT NOW! ORDER TODAY! CALL 1-800-346-0000



### A. Styled Wheel Protector Locks.

Kit features four through-hardened steel locking nuts designed to help protect your Lincoln's aluminum wheels and tires against theft. Continental and Town Car locks feature a decorative, triple-nickel chrome-plated finish; Mark VIII model features a corrosion-resistant zinc-plated finish for under hub-cap application. Locks replace one lug nut on each wheel; key included.



A

### B. Multi-Sport Removable Rack.

Versatile, lightweight rack accepts specially designed adapters described below to provide a wide range of recreational cargo carrying options. Rack locking knobs also available (must be ordered separately). Easily installed and removed. Not available for Mark VIII.

#### Multi-Sport Carrier Adapters.

Choose from four models. Our upright Bike Adapter holds one road or mountain bike and features a built-in lock. Ski/Snowboard Adapters are available in two sizes: one safely transports up to four pairs of skis or one snowboard, the other holds as many as six pairs of skis or two snowboards. Both include standard locks. The versatile Watersport Adapter can accommodate a sailboard, canoe or kayak (tie-down belts, boom clips and built-in oar, paddle or mast holders included). Adapters attach easily and securely to rack crossbars. **Note:** Only available for vehicles equipped with the Multi-Sport Removable Rack.



B

### C. Engine Block Heater.

An enclosed heater coil installs permanently in your engine block to help provide faster winter starting with less fuel waste and battery drain. Plugs into any 110-volt outlet. Includes cap to protect plug when not in use. Dealer installation recommended.



C



## 1993 ACCESSORIES PRICING INDEX

The following accessories are organized alphabetically by product name. Application information is provided as a guide only. Refer to the appropriate product description page for specific applications, restrictions and limitations.

**Note:** The prices, descriptions and applications in this index were in effect at the time it was approved for printing. The prices listed are for convenience only and are not intended to be determinative of actual retail prices. Prices are subject to change without notice.

Accessory Item	Suggested Retail Price
<b>CONTINENTAL, TOWN CAR, MARK VIII</b>	
Console, Storage/Beverage .....	\$ 60.00
Engine Block Heater .....	27.60
Floor Mats:	
Carpeted (Front) .....	57.00
Carpeted (Rear) .....	29.40
Garage Door Opener .....	249.33
Racks and Rack Accessories:	
Multi-Sport Removable Rack .....	164.00
Bike Carrier Adapter .....	118.00
Ski/Snowboard Carrier Adapter .....	94.00
Watersport Carrier Adapter .....	68.00
Remote Keyless Entry System .....	164.00
Splash Guards:	
Vinyl .....	5.27
Polyethylene .....	5.60
Premium .....	10.60
Styled Wheel Protector Locks .....	31.80
Vehicle Security Systems:	
300 System .....	121.33
400 System .....	85.67
400K System .....	141.33
500 System .....	157.08
600 Plus System .....	243.33



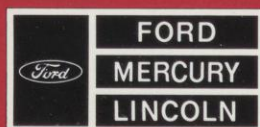
**BULK RATE**  
U.S. Postage Paid  
Permit No. 2621  
Detroit, MI

### SPECIFY GENUINE FORD COLLISION REPAIR PARTS...

Genuine Ford sheet metal and plastic replacement collision parts, such as the hood, doors, fenders and bumper components, are the right choice — and for all the right reasons. Genuine Ford parts are equal to original parts in fit, finish, structural integrity and corrosion protection. Ford parts are the same as those used on new vehicles which are certified to meet all Federal Motor Vehicle Safety Standards. And all Ford sheet metal parts are covered by the exclusive Ford Lifelong Sheet Metal Guarantee. Ask your dealer to see a copy of this limited warranty. Don't settle for imitations. Ask your insurer to authorize genuine Ford collision parts.

### QUALITY CAR CARE PRODUCTS...

Our premium Car Care Products are specially formulated to enhance the beauty and performance of Ford-built vehicles. Each product is thoroughly tested by Ford engineers to ensure it meets or exceeds the engineering, performance and safety specifications of today's high-tech vehicles. In fact, these convenient, top-of-the-line products are the same ones used by Ford and Lincoln-Mercury dealers across the United States. So contact your dealer today and insist on genuine Ford Car Care Products.



### QUALITY CARE

It may be your car,  
but it's still our baby.<sup>SM</sup>

