

1 9 9 3

LINCOLN TOWN CAR





TABLE OF CONTENTS

History	6
Power	9
Technology	10
Comfort	15
Convenience	16
Safety	18
Endurance	20
Executive	22
Signature	24
Cartier	26
Ownership	28
Specifications	30





THE BEGINNINGS OF A LEGEND. Seventy-odd years ago, time played host to Mr. Henry Leland, one of the automotive world's most influential and respected men. A precision machinist by passion and trade, Leland turned his abilities from aircraft engines to automobiles in 1921. The resulting legacy—that of Lincoln motor cars—is one of the proudest in the annals of the automobile. ¶ From the outset, Lincoln automobiles exhibited a forcefulness in engineering. The first Lincoln engine, an advanced V-8, led the luxury class in

technology and power. It was this supreme engineering that led Henry Ford to purchase Leland's Lincoln Motor Company shortly after it was formed. ¶ Under Ford ownership, Lincoln flourished. Year after year, model after model, its reputation grew. Magnificent machines carrying the custom bodies of America's finest coachbuilders rolled out of the Lincoln plant. ¶ In 1931, an all-new Lincoln series was launched that would include some of the most spectacular automobiles the world had ever seen. Remaining true to



Town Car Signature Series pictured with optional Y-spoke aluminum wheels.

Leland and to Henry Ford, also an innovative machinist of historic dimensions, the new Lincoln line included powerful V-12 engines, lightweight aluminum alloy engine components and superb styling. ¶ In the years that followed, more classic Lincolns would emerge: Phaetons and sedans, Continentals and Marks. The Town Car name, however, roots itself in Lincoln's first year of production. Like its predecessors, a formal roof design and expansive passenger compartment continue to distinguish the Town Car series

to this very day. ¶ In accordance with their heritage, the 1993 Lincolns remain at the forefront of technology—technology that provides drivers and their guests with impressive ability, security, comfort and luxury. This is the very essence of what a luxury car should be—a creed that sets the standards for every Lincoln automobile. A creed that no Lincoln lives up to more graciously than the 1993 Lincoln Town Car.



AN ADVANCED V-8 WORTHY OF ITS ANCESTRY. Why did Henry Leland engineer a new V-8 for his premier Lincoln? Look no further than that design's combination of power, smoothness, reliability and efficiency. ¶ Just as Leland revolutionized conventional V-8 technology in the 1920s, Lincoln again followed suit in 1991 with the introduction of an all-new advanced design V-8. A measure of its technology is the fact that, with a displacement of 4.6 liters, it develops power ranging from 190 hp with standard single exhaust to 210 hp with the optional dual exhaust system. No less remarkable is the fact that it delivers this power while providing admirable fuel economy.* ¶ Cylinders banked at an angle of 90 degrees contribute to exceptional smoothness at idle and under power. And, further enhancing this V-8's low-vibration characteristics, engine accessories such as the alternator and power steering pump are mounted directly on the engine, thereby eliminating vibration-prone brackets. ¶ Overhead camshafts improve power production by increasing valve-train efficiency compared to traditional push-rod engine configurations. And extraordinary engineering efforts were employed to reduce internal friction. For example, Lincoln engineers added low-friction roller bearings to the cam followers to help improve overall engine performance and further increase fuel efficiency.* Also important in this regard is the multi-port fuel injection system controlled by the incredibly quick EEC-IV engine computer. By monitoring and continually adjusting for ambient and engine conditions, it helps ensure that exemplary performance is the norm. ¶ In addition, the EEC-IV computer constantly communicates with the engine's ideally matched partner, an electronically controlled four-speed automatic overdrive transmission. The resultant shift action is exceptionally smooth, and when fourth gear (overdrive) engages, engine rpm drops a full 33%, reducing engine wear and fuel consumption.* By pressing a button on the selector lever, a newly added feature permits you to lock out the overdrive mode for increased engine braking when driving in hilly terrain.

*See the EPA statement in the back of this brochure.



Town Car's 4.6-liter engine is controlled by the sophisticated EEC-IV engine computer, capable of processing well over 300,000 pieces of information per second.





TECHNOLOGY

APPLYING ADVANCED TECHNOLOGY TO DRIVER CONTROL. Of primary importance to every driver is control. To help meet this need Lincoln Town Car engineers utilize high technology in the form of a standard four-wheel disc anti-lock braking system (ABS). This electronically controlled system helps reduce stopping distances on many surfaces and helps provide an increased measure of steering control during hard braking. Sensors monitor wheel rotation to detect impending brake-induced wheel lockup. And a computer manages braking action to help prevent it.

Maintaining traction is another important concern, especially when getting underway or proceeding at slow speeds on a slick surface. Coming to the driver's aid in these situations is Town Car's available traction assist system. If sensors detect wheel spin due to loss of traction in either of the drive wheels, the rear brakes are electronically applied, in pulses of fractions of a second, to help the slipping wheel regain its grip. Once underway, Town Car's SLA (short- and long-arm) independent front suspension not only smooths out road imperfections, but also resists the tendency of the



Standard four-wheel disc anti-lock brakes help deliver shorter stopping distances on most surfaces.



Anti-lock brakes also help provide an extra measure of steering control during hard braking.



Available traction assist helps to prevent the drive wheels from spinning at low speeds on slippery roads.



vehicle's front end to "dive" during braking. The rear suspension, too, is nothing short of remarkable. The rear springs are constructed from nylon-reinforced rubber and filled with air. Amazingly simple in concept, a microprocessor controls an air compressor and valves which, in turn, regulate the air pressure within the two rear air springs. Unlike so-called "air shocks" or "load levelers," this suspension system is a dynamic one, changing its characteristics in response to load input. It maintains the Town Car at the proper ride height and in a level attitude regardless of weight changes

within the vehicle. And as loads increase, the air springs automatically operate at a higher rate. Thus the suspension recalibrates itself to help give you a gratifying combination of riding smoothness and self-assured handling. Still another contributor to Town Car's admirable road performance is its variable-assist power steering. As driving speeds increase, a computer actuates an electrohydraulic valve to gradually decrease power steering assist to enhance the driver's feel of the road. At lower speeds, increased assist is provided for optimum maneuverability.



The SLA independent front suspension is designed to counteract "dive" when braking.



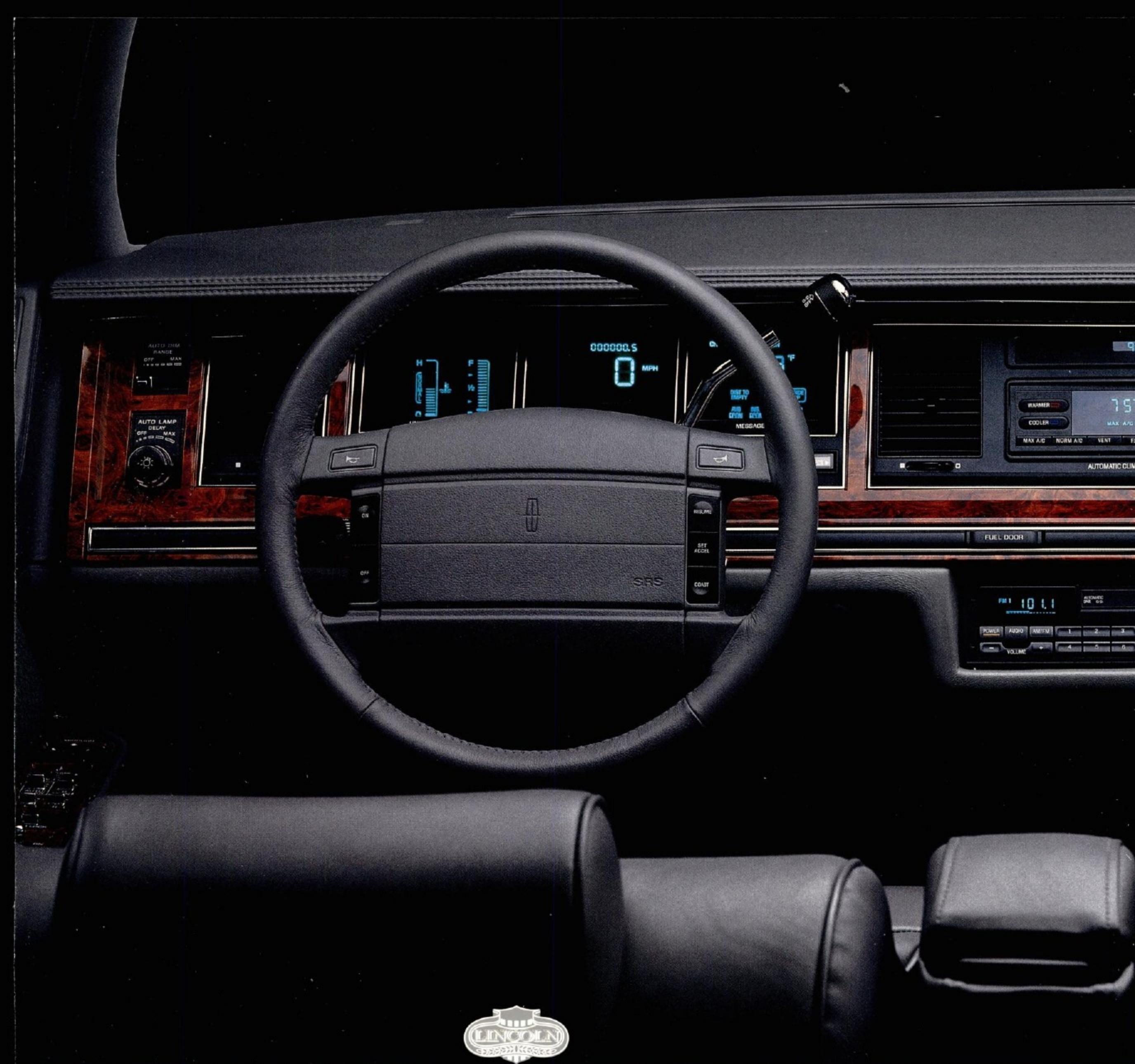
Rear air springs maintain the proper ride height and a smooth ride regardless of vehicle loading.





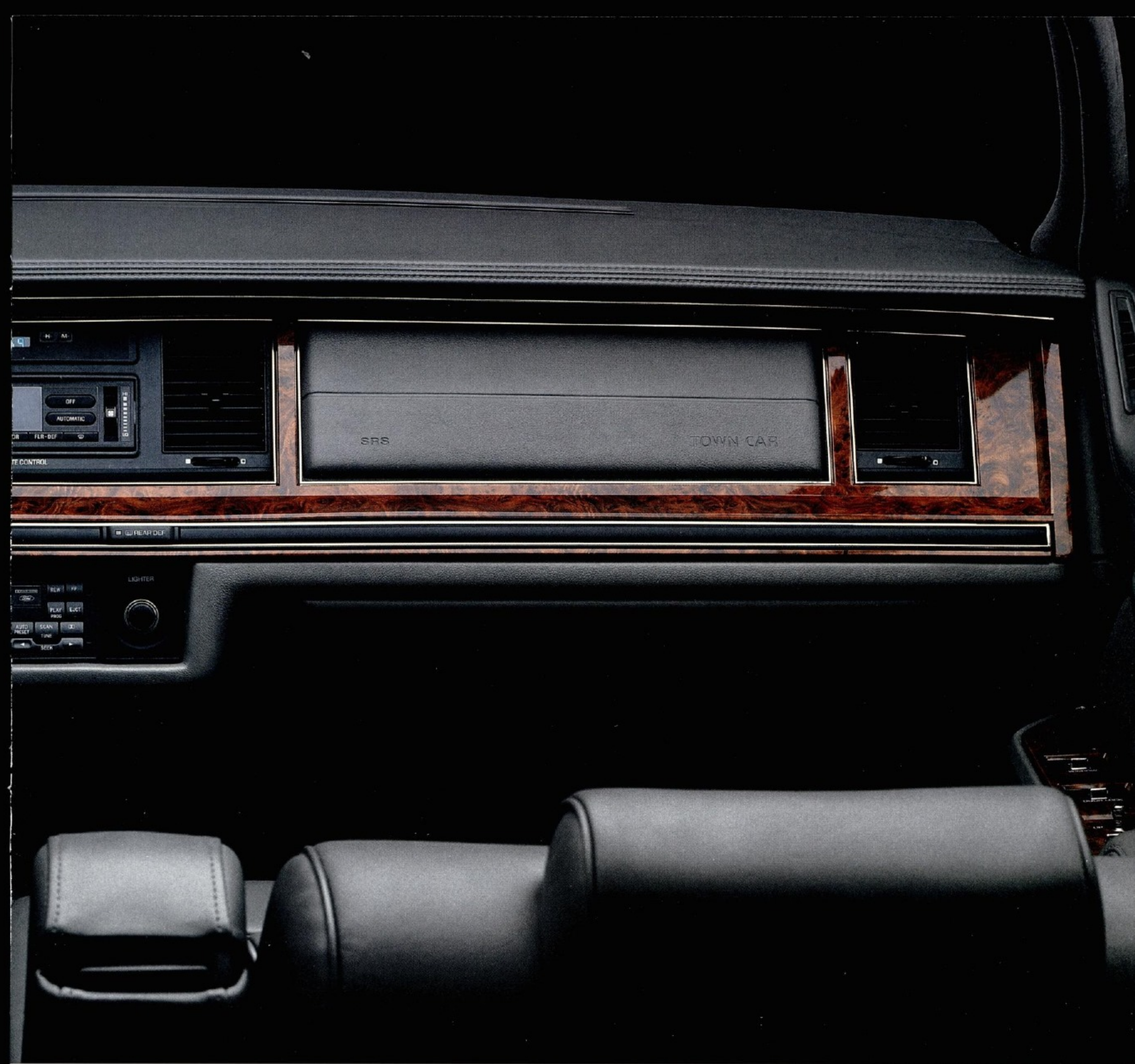
C O M F O R T

THE LUXURY OF SPACE AND QUIET. To create an ultimately comfortable environment, the most elementary parameters must first be addressed. Space, for example. In true Lincoln fashion, Town Car provides spaciousness that is rare among today's luxury cars. Quiet is also a Town Car hallmark. These qualities lay the foundation for superlative luxury. Found within every Town Car cabin are fine materials, fashioned and crafted with exquisite detail. Note how the seams of the leather seating surfaces—shown here in a design uniquely available on the Signature Series—are stitched with care and precision. Classic piping surrounds each seat. The Lincoln symbol graces every seatback. ¶ Supporting this choice detailing are seats constructed as fine furniture, incorporating coil-and-grid internal construction. Expect their comfort to be both an enduring and endearing virtue, for as you experience their lasting quality, you'll also enjoy their lasting comfort. Interior engineers carefully designed each cushion, contour and bolster to support your body, with special attention paid to how the back and legs are positioned. After many miles and many hours behind the wheel, you'll praise the success of their efforts. ¶ Individual items, such as the well positioned and generously plump center armrests, further enhance the experience of luxury, as do the simple, yet effective, adjustable D-rings that permit the comfortable adjustment of front shoulder belts. Each feature and each item is provided to help make sure one of the world's most spacious luxury cars feels like one of the world's most comfortable as well.



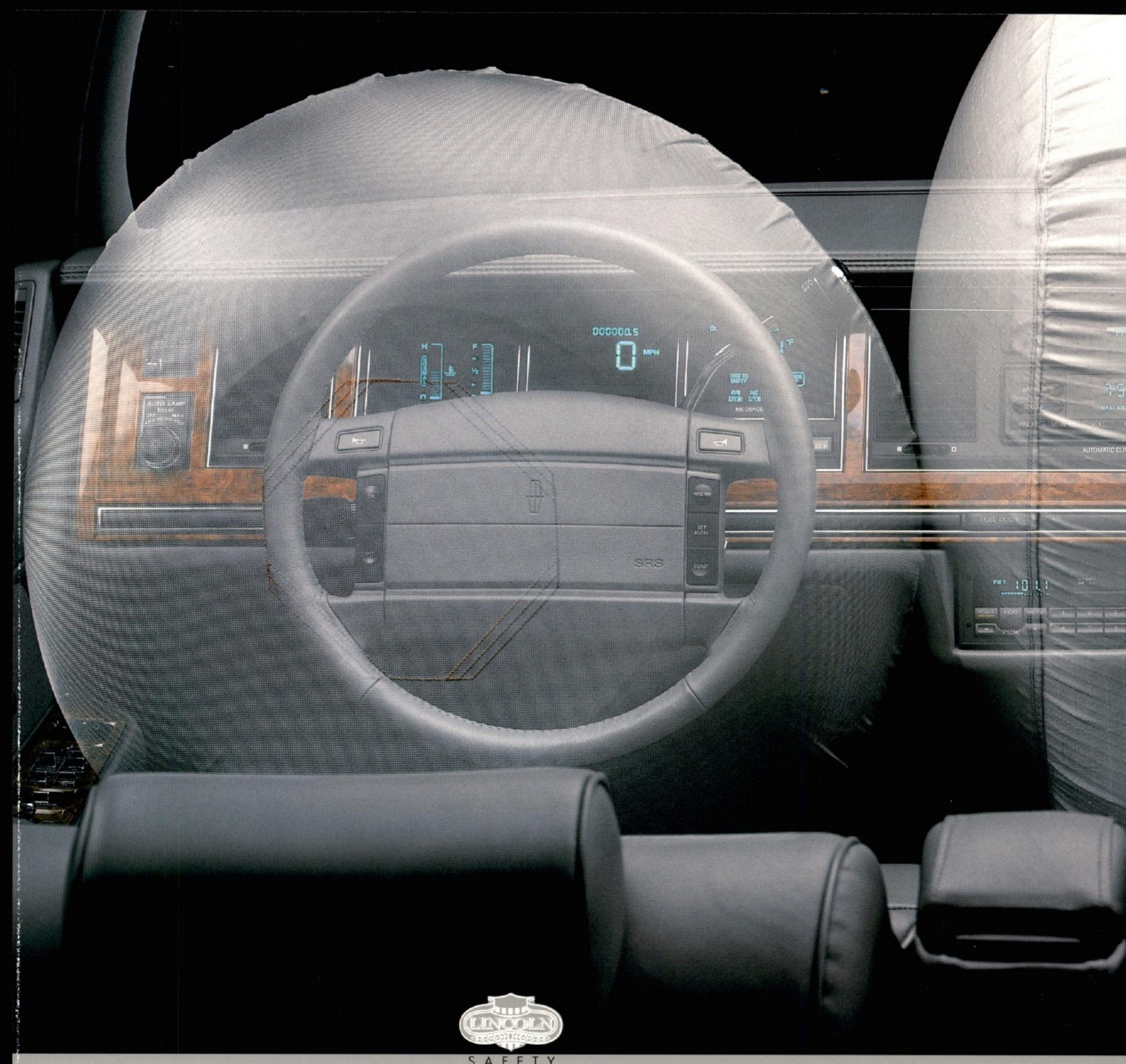
A SUPERB DESIGN THAT WAS INSPIRED BY YOU. The spirit of ergonomics, the study of how people interact in a given environment, is exactly this: Put things where they belong. Where hands can reach them. Where eyes can see them. Where maximum control is combined with maximum ease of usage. ♪ Town Car commendably addresses all counts. Hands and feet fall naturally to the primary controls:

the steering wheel, pedals and gear selector. Secondary controls are positioned in easy reach, many at your fingertips—just as they should be. The electronic instrument cluster with message center, now standard in all Town Cars, is located to be readily visible and logically arranged to present information quickly and clearly. In every case, instruments and controls are designed and sized to meet Lincoln engineers'



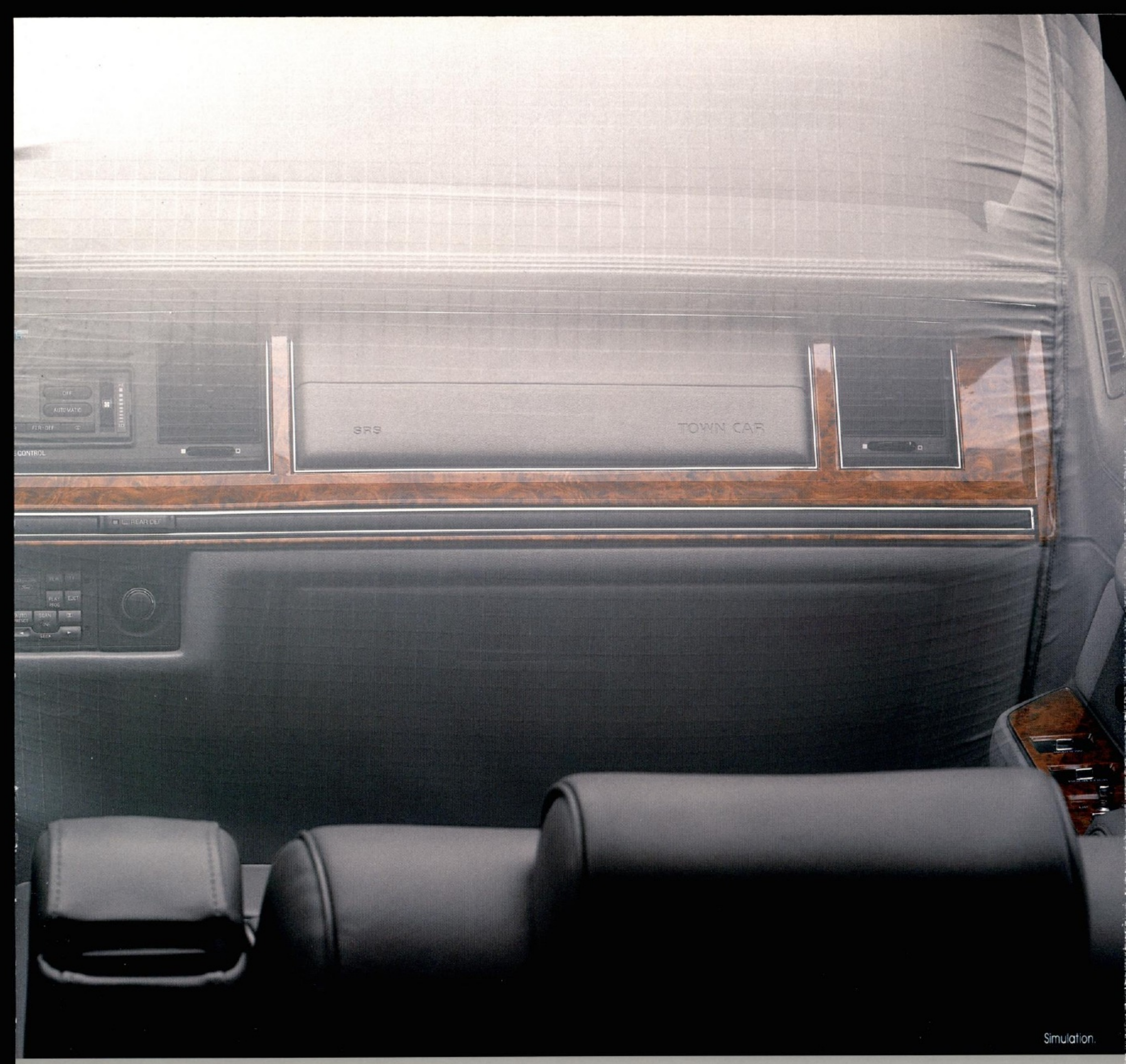
requirements for functional efficiency. In other words, your requirements. ♪ After addressing matters of pure function, Lincoln interior designers add whatever is needed to elevate the level of Town Car luxury and comfort. Standard are such amenities as a leather-wrapped steering wheel, six-way power adjustment for both the driver's and front passenger's seats, a tilt steering column and an electronic climate control

system that can even sense and compensate for heat buildup caused by sunlight falling on the windshield. Power operation for the door locks and trunk is thoughtfully included, as well as a new remote keyless entry system. Even the power windows demonstrate engineering forethought by the inclusion of an express-down feature for the driver's window—only one quick touch is required to fully lower the side glass.



A COMMITMENT TO YOUR PEACE OF MIND. Many factors contribute to a sense of driving security and peace of mind. At Lincoln, these areas are addressed by a rigorous program of safety engineering. The air bag Supplemental Restraint System (SRS) is a safety measure that, in combination with properly worn safety belts, constitutes one of the most advanced and effective restraint systems available. (It should be stressed here that safety belts should always

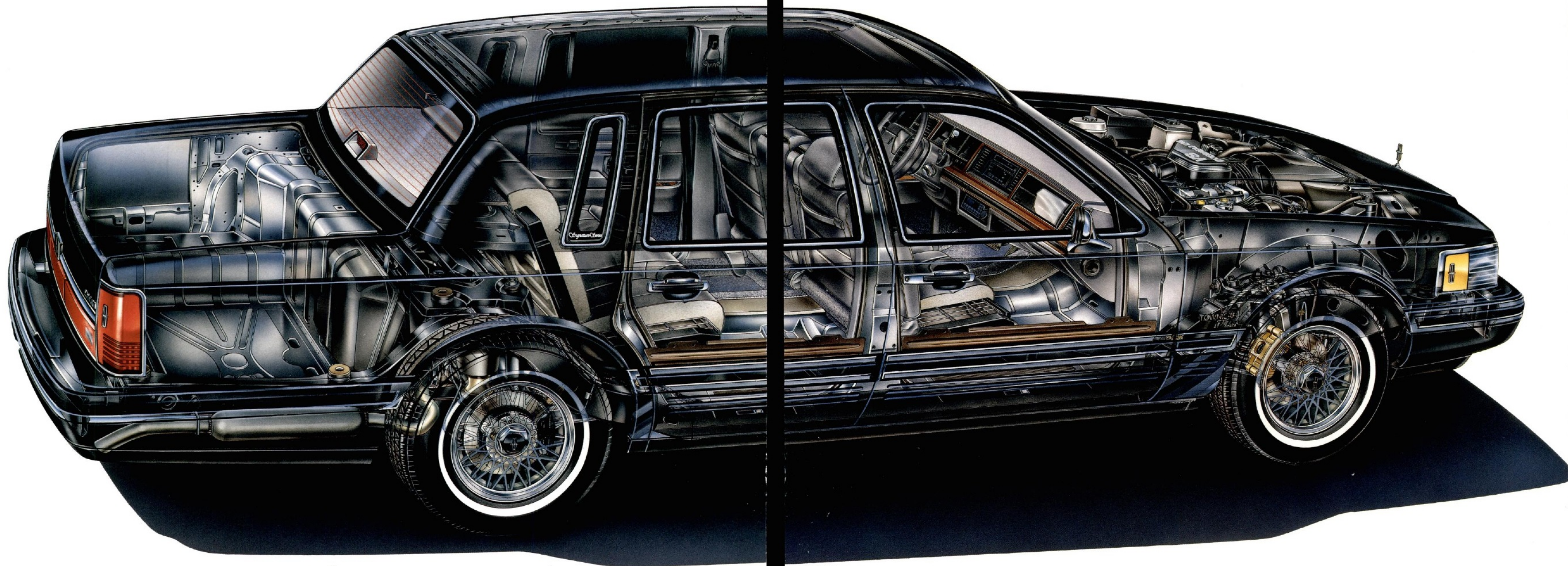
be worn.) And Lincoln includes driver- and right front passenger-side air bags as standard equipment on every Town Car. Air bags are designed to increase the amount of protection provided by safety belts to help reduce the risk of head and chest injuries in certain moderate to severe frontal impacts. In about 1/20 of a second, or 2/3 of an eye blink, the system activates and fully inflates. Adding further protection for the driver and passengers are lap/shoulder safety belts



Simulation.

at outboard rear seating positions and a body structure designed to help manage the forces of an accident. Town Car's structure is built upon a sturdy perimeter frame. The body itself was formed of a number of tough steel alloys. There are steel guard rails inside the doors and the roof and front pillars are built to meet a static force test equal to 5,000 pounds, an amount that exceeds Town Car's total weight. In addition, engineers designed specific crush zones at the

front and rear to help absorb much of a collision's energy before it reaches the cabin. Obviously, accident avoidance is also an important consideration. Thus every Town Car features four-wheel disc anti-lock brakes, as well as speed-sensitive power steering and an agile suspension system — features that are engineered to deliver a ready response to a driver's demands.



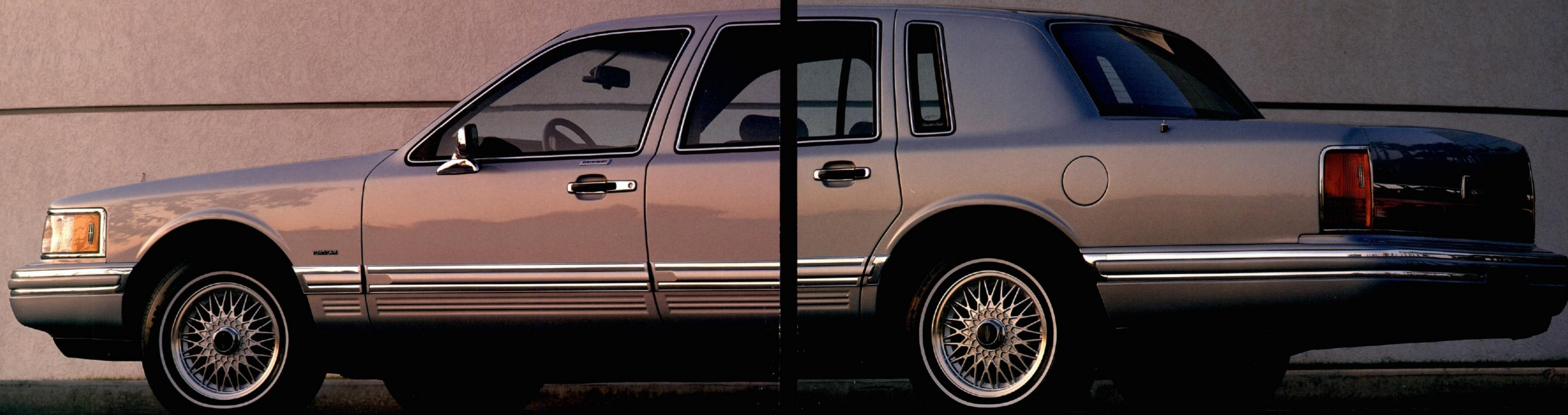
ENDURANCE

TECHNOLOGY THAT SLOWS THE AGING PROCESS. A resolute group, those Lincoln engineers. Insistent. Demanding. Long-term thinkers. Such people develop cars of long-lasting character and value. ¶ The process begins where it should, with the materials from which Town Car is constructed. All exterior body panels other than the roof are pressed from two-sided galvanized steel, a material with superior rust-inhibiting abilities. The roof is galvanized on its inner surface to ward off corrosion caused by high humidity. ¶ To

the outer surfaces is applied a meticulous paint and finish procedure that involves up to 23 stages. On chip-prone panels, a urethane coating acts as a shock absorber to enable the outer finish coats to fend off road debris that might otherwise cause unsightly chips. In the unlikely event a foreign object creates a chip, it may well go unnoticed as the primer coat is color-keyed to the top coat. ¶ Further damage protection comes from bumpers that are successfully tested at twice the speed federal standards require, and wide body-side

moldings that help defend the paint against carelessly opened doors of other cars or errant shopping carts in parking lots. These features are attached to an impressive inner structure designed to withstand the punishing torsional forces exerted by the roads you traverse every day. Town Car's platform employs girderlike frame members and integral body panels, many formed from formidable alloys, including HSLA high-strength steel. Precision welded at over 1,800 points, the body is built to endure the years gracefully. ¶

Lincoln engineers also specified a number of critical engine components to provide a long powertrain life. The 4.6-liter V-8 features a rigid, deep-skirt block with side-bolted main bearing caps—two key contributors to engine longevity. An adjustment-free roller chain, as opposed to a typical rubber belt, drives the overhead camshafts for the same reason. Even the ignition benefits from this type of thinking and thus features a distributorless system with no moving parts.



EXECUTIVE

WHERE THE WORLD OF TOWN CAR LUXURY BEGINS. In the Lincoln tradition, Town Car epitomizes all that is luxury, and the Executive Series is where the spectrum of Town Car choice begins. Styled with impressive flowing lines, limousine style doors and tasteful chrome accents, the Executive Series strikes an elegant, contemporary note accented by Town Car's geometric spoke aluminum wheels. ¶ In point of fact, this Town Car may well offer all you desire in a fine

motorcar. Executive Series interior standards include sumptuous cloth seating surfaces plus the superb automatic climate control, an 80-watt stereo sound system, electronic instrumentation, power windows, power door locks and six-way power front seats. ¶ And like all Town Cars, the Executive Series provides the welcome security and convenience of a remote keyless entry system. This system includes a small transmitter which permits you to lock and unlock all

doors, release the trunk lid and switch on the illuminated entry lamps from distances up to 33 feet. It can also activate an alarm system which intermittently sounds the horn and flashes the headlamps to ward off intruders. ¶ Other features perhaps unexpected by those not familiar with Lincoln's functional approach to luxury include cornering lamps, heated outside power mirrors, fingertip speed control and the often appreciated automatic parking brake release.

By reducing the effort needed to deal with more or less routine driving matters, Town Car gives its owners the luxury of truly enjoying the driving experience. ¶ And, of course, Town Car's basic virtues are present in full supply: Highly responsive V-8 power. Superb ride. Safety-conscious engineering and design. Remarkable spaciousness and quiet. The characteristics you desire in a luxury sedan, together with the unique character of the Executive Series Town Car.



LUXURY AS PERSONAL AS YOUR OWN SIGNATURE.

Personal tastes, requirements and attitudes distinguish people as well as automobiles, hence the existence of the Signature Series Town Car. ¶ To the notable style and amenities of the Executive Series Town Car, Lincoln adds features that enhance your motoring pleasure. It adds, for example, dual floorwell lamps to assist you in entering and leaving

the Town Car at night. It adds, too, the convenience of map pockets in the front seatbacks. As with all Town Cars, fine leather greets the driver's hands as they grip the wheel. ¶ Among other standard Town Car amenities: When the ignition is activated, electronic instrumentation immediately informs you if a door or the decklid is ajar. The electronic message center indicates fuel economy, miles to empty,



elapsed distance and even the outside temperature. Yet another valued Town Car convenience is the automatic operation of the headlamps, which not only turn themselves on and off, but dim the high beams in the face of traffic and stay on for a predetermined time after the ignition has been turned off. ¶ The Town Car also favors its owners with the gracious assistance of a power decklid pulldown. ¶ Among features that

further enhance the pleasures of Town Car ownership is a remarkable voice-activated telephone, newly available on Signature and Cartier models. It permits you to place calls simply by activating the unit and saying aloud the previously stored name of the person to be called. The ultimate in hands-free phoning. It stores 20 voice-activated numbers and 30 dialed numbers.



SIMPLY THE MOST MAGNIFICENT OF TOWN CARS. Of all the flagship Lincoln Town Cars, one is favored with more luxury features and passenger amenities than any other: The Cartier Designer Series Town Car. Few of the world's many automobiles, regardless of price, transport you with such utter elegance and ease. ¶ As distinctively detailed as the custom-bodied Lincolns of yesteryear, the Cartier Designer

Series Town Car represents the very pinnacle of Lincoln luxury. ¶ In addition to the many standard features of the Executive and Signature Series models, the Cartier Designer Series adds still more. The front seats not only provide six-way power adjustment, but also power back rest recliners and power lumbar support. The driver's seat has a memory control which stores up to three individual seating preferences

that may be recalled at a touch of a button. ¶ Apart from exemplary spaciousness and superb seating comfort, cabin passengers will undoubtedly appreciate the luxurious Cartier Series upholstery, offered either in supple leather or a combination of leather and rich Hanover cloth. Both, of course, place the distinctive Cartier emblem on the seat-backs. ¶ Passengers would also no doubt take pleasure in

the Cartier's JBL audio system, capable of supplying a full 145 watts of bi-amplified power—more than that of many home systems. For ardent audiophiles, this magnificent system may also be combined with an available trunk-mounted 10-disc CD changer. ¶ The Cartier Designer Series. Style without equal. Luxury without compromise.



OWNERSHIP

THE LINCOLN COMMITMENT. WHAT IT MEANS. As a Lincoln owner, you can expect to be treated with lavish care. That's the Lincoln Commitment. ☪ The Lincoln Commitment, which you receive with the purchase of your new Lincoln, includes:

AN UNDERSTANDING OF YOUR LINCOLN—AND THE PEOPLE BEHIND IT. You will undergo an extensive delivery process to familiarize yourself with your new automobile and dealership personnel. You'll even receive a full tank of gas.

THE VALUABLE BENEFITS OF A ROADSIDE SERVICE ASSISTANCE PROGRAM. You will enjoy the benefits of a Roadside Service Assistance program provided by Ford Auto Club, Inc. that

include roadside service and towing anywhere in the United States and up to \$1,000 emergency travel expense reimbursement (for up to three days when your vehicle is disabled more than 100 miles from home).

A TOLL-FREE NUMBER YOU CAN CALL. Roadside service can be requested by calling toll-free 1-800-521-4140, 24 hours a day, seven days a week. A Lincoln authorized service vehicle will be dispatched immediately and, in most instances, will arrive within 45 minutes of your call. This complimentary service is extended to all new Lincoln owners for one year from original date of purchase as part of the Lincoln Commitment, and to any Lincoln owner, regardless of vehicle age, for an appropriate fee. See your dealer for details.

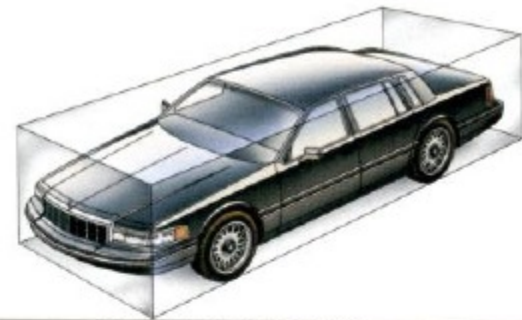
A CAR WHEN YOU NEED IT DURING WARRANTY SERVICE. Should your car require overnight warranty service, you will receive a service loaner car when available or a base rental allowance for up to five days. Ask your dealer for complete information.

THE LINCOLN LIMITED WARRANTY. The Lincoln bumper-to-bumper limited warranty covers four years or 50,000 miles with no deductible. Ask to see a copy of this limited warranty at your Lincoln-Mercury dealer.

THE ABILITY TO TALK TO US. In the event of a problem your dealer can't solve, you can call toll-free 1-800-521-4140 or write Ford Motor Company, Lincoln Customer Assistance Center, 300 Renaissance Center, P.O. Box 43360, Detroit, Michigan 48243. Business hours are from 8:30 a.m. to 5:00 p.m., Eastern Time, Monday through Friday, except holidays. In addition, you may call after normal business hours and speak to a customer service representative. A member of the Lincoln Commitment team will contact you the next business day. ☪ Buckle up—together we can save lives.



SPECIFICATIONS



DIMENSIONS

Wheelbase (in.)	117.4
Track (in.)	front 62.8 rear 63.3
Length (in.)	218.9
Width (in.)	76.9
Height (in.)	56.7
Curb weight (lb.)	4,040
Fuel capacity (gal.)	20.0
Luggage space (cu. ft.)	22.3



ACCOMMODATIONS

Vehicle type: Six-passenger, four-door sedan	
Headroom (in.)	front 39.0 rear 38.0
Legroom (in.)	front 42.6 rear 42.8
Hiproom (in.)	front 57.2 rear 59.7
Shoulder room (in.)	front 62.0 rear 62.0



DRIVETRAIN

Transmission type	four-speed electronic automatic overdrive with lock-up converter
Gear ratios: I-2.40:1 II-1.47:1 III-1.00:1 IV-0.67:1	
Axle ratio: 3.08:1 (Trailer tow) 3.55:1	



CHASSIS

Body	body-on-frame perimeter
Suspension:	front: independent SLA coil-spring design with ball joints and stabilizer bar rear: four bar link, air spring suspension shock absorbers: nitrogen gas-pressurized
Steering type	speed-sensitive, variable-assist
Overall ratio	16.4:1
Turns, lock to lock	3.4
Turning circle, curb to curb (ft.)	40.0
Brakes:	front: 11.1-inch power-assisted disc, anti-lock rear: 11.2-inch power-assisted disc, anti-lock
Wheels	15 x 6.5-inch steel
Tires	P215/70R15 WSW steel-belted radials

Information based on MVMA specifications.



ENGINE

Layout	front engine, rear-wheel drive
Type	V-8 with EEC-IV computer
Displacement (liters/cu. in.)	4.6/281
Bore & stroke (mm/in.)	90.2 x 90.0/3.6 x 3.6
Compression ratio	9.0:1
Horsepower @ rpm (SAE net)	190 @ 4200*
Torque @ rpm (lbs.-ft. SAE net)	260 @ 3200
Fuel delivery	sequential multi-port electronic fuel injection
Fuel requirement	87 octane (minimum) unleaded (anti-knock index)



FUNCTIONAL FEATURES

	E	S	C
4.6-liter SOHC V-8 engine (190 hp @ 4200 rpm)	S	S	S
Sequential multi-port electronic fuel injection	S	S	S
Electronic engine control (EEC-IV)	S	S	S
Four-speed electronic automatic overdrive transmission with overdrive lockout	S	S	S
Driver and passenger side air bag	S	S	S
Supplemental Restraint System	S	S	S
Speed-sensitive, variable-assist power steering	S	S	S
Power four-wheel disc brakes	S	S	S
Four-wheel disc anti-lock brake system	S	S	S
Traction assist	O	O	O
Rear air spring suspension	S	S	S
Nitrogen gas-pressurized shock absorbers	S	S	S
Trailer Tow Package (Class III)	O	O	N/A
Maintenance-free battery	S	S	S
Dual exhaust system	O	O	O



EXTERIOR FEATURES

	E	S	C
Cornering lamps	S	S	S
Single key entry/ignition	S	S	S
Power fold-away heated mirrors	S	S	S
Extensive corrosion protection	S	S	S
Bodyside accent stripes	N/A	S	S
Premium bodyside moldings	S	S	S
Front and rear rub strips	S	S	S
Dual-shade paint	N/A	S	S
Monotone paint treatment	S	O	N/A
Titanium lower bodyside (except with selected paints)	N/A	S	N/A
Full vinyl roof	O	O	O

E Executive S Signature C Cartier



INTERIOR/CONVENIENCE FEATURES E S C

Comfort/convenience group, 6-way power front passenger seat, power decklid pulldown, dual illuminated visor mirrors, rear floor mats and headlamp convenience group (includes automatic headlamp dimmer and autolamp on/off/delay system)	S	S	S
50/50 twin comfort lounge seats	S	S	S
Six-way power driver's seat	S	S	S
Driver and passenger manual recliners	S	S	N/A
Memory seat with dual power recliners and lumbar support	N/A	O	S
Two-way front seat headrests	S	S	S
Cloth seat trim	S	S	N/A
Leather seat trim	O	O	O**
Cloth and leather seat trim	N/A	N/A	S
Front seatback robe cords and map pockets	N/A	S	S
Front- and rear-seat fold-down center armrests	S	S	S
High-Level AM/FM stereo cassette radio	S	S	N/A
JBL audio system	O	O	S
Trunk-mounted 10-disc CD changer	O	O	O
Automatic power antenna	S	S	S
Dual storage armrests	N/A	S	S
Electronic instrumentation with message center	S	S	S
Power moonroof	O	O	O
Anti-theft alarm system	N/A	O	O
Electrochromic automatic dimming mirror	O	O	O
Power windows and door locks	S	S	S
Driver express-down window	S	S	S
Fingertip speed control	S	S	S
Tilt steering column	S	S	S
Automatic temperature control	S	S	S
Tinted glass	S	S	S
Rear window defroster	S	S	S
Remote decklid release	S	S	S
Automatic parking brake release	S	S	S
Remote illuminated keyless entry system	S	S	S
Leather-wrapped steering wheel	S	S	S
Interval wipers	S	S	S
Courtesy lights and integral reflectors on front doors	S	S	S
Roof rail assist handles	S	S	S
Trip odometer	S	S	S
Front floor mats	S	S	S
Dual illuminated visor mirrors	S	S	S
Integrated voice-activated cellular telephone	N/A	O	O

EPA statement: 1993 EPA mileage estimates were unavailable when this publication was printed. The 1993 Lincoln Town Car, however, should post good mileage figures. Ask your Lincoln-Mercury dealer for the latest information. Options availability: Options shown or described in this brochure are available at extra cost and may be offered only in combination with other options or subject to additional ordering requirements or limitations.



TIRES/WHEELS

	E	S	C
P215/70R15 WSW steel-belted radial tires	S	S	S
Y-spoke aluminum wheels	O	O	O
Geometric spoke aluminum wheels	S	S	S



COLORS

	E	S	C
Interior:			
Opal Grey	S	S	S
Shadow Blue	S	S	N/A
Cranberry	S	S	S
Aquamarine	S	S	N/A
Ebony	S	S	N/A
Mocha	S	S	N/A
Oxford White/Opal Grey (leather only)	S	S	N/A
Oxford White/Cranberry (leather only)	S	S	N/A
Oxford White/Shadow Blue (leather only)	S	S	N/A
Exterior:			
Cranberry Clearcoat Metallic	S	S	S
Burgundy Clearcoat Metallic	S	S	N/A
Twilight Blue Clearcoat Metallic	S	S	N/A
Midnight Black Clearcoat	S	S	N/A
Nordic Blue Clearcoat Metallic	S	S	N/A
China Blue Clearcoat Metallic	S	S	N/A
Opal Grey Pearlescent Clearcoat Metallic	S	S	S
Midnight Opal Clearcoat Metallic	S	S	S
Crystal Blue Pearlescent Clearcoat Metallic	S	S	N/A
Woodrose Clearcoat Metallic	S	S	N/A
Light Mocha Pearlescent Clearcoat Metallic	S	S	N/A
Arctic White Clearcoat	S	S	N/A
White Opalescent Clearcoat Metallic	N/A	N/A	S
Cartier (Dual Shade):			
Cranberry Clearcoat Metallic/Dark Cranberry lower			
Opal Grey Pearlescent Clearcoat Metallic/Medium Opal lower			
White Opalescent Clearcoat Metallic/White Opalescent lower			
Midnight Opal Clearcoat Metallic/Medium Opal lower			

S Standard feature O Optional feature N/A Not available

*Dual exhaust 210 hp @ 4600 and 270 lb.-ft. @ 3400

**No extra charge on Cartier

Product changes

Following publication of this brochure, certain changes in standard equipment, options, prices and the like, or product delays may have occurred which would not be included in these pages. Your Lincoln-Mercury dealer is your best source for up-to-date information.

Lincoln-Mercury Division reserves the right to change product specifications at any time without incurring obligations.

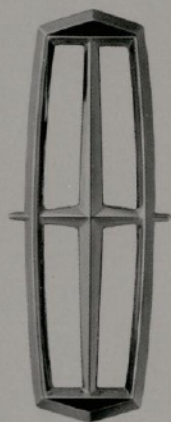


Printed on recycled paper

(450M) 7-92 P-8256

LINCOLN-MERCURY DIVISION





LINCOLN.
WHAT A LUXURY CAR SHOULD BE.