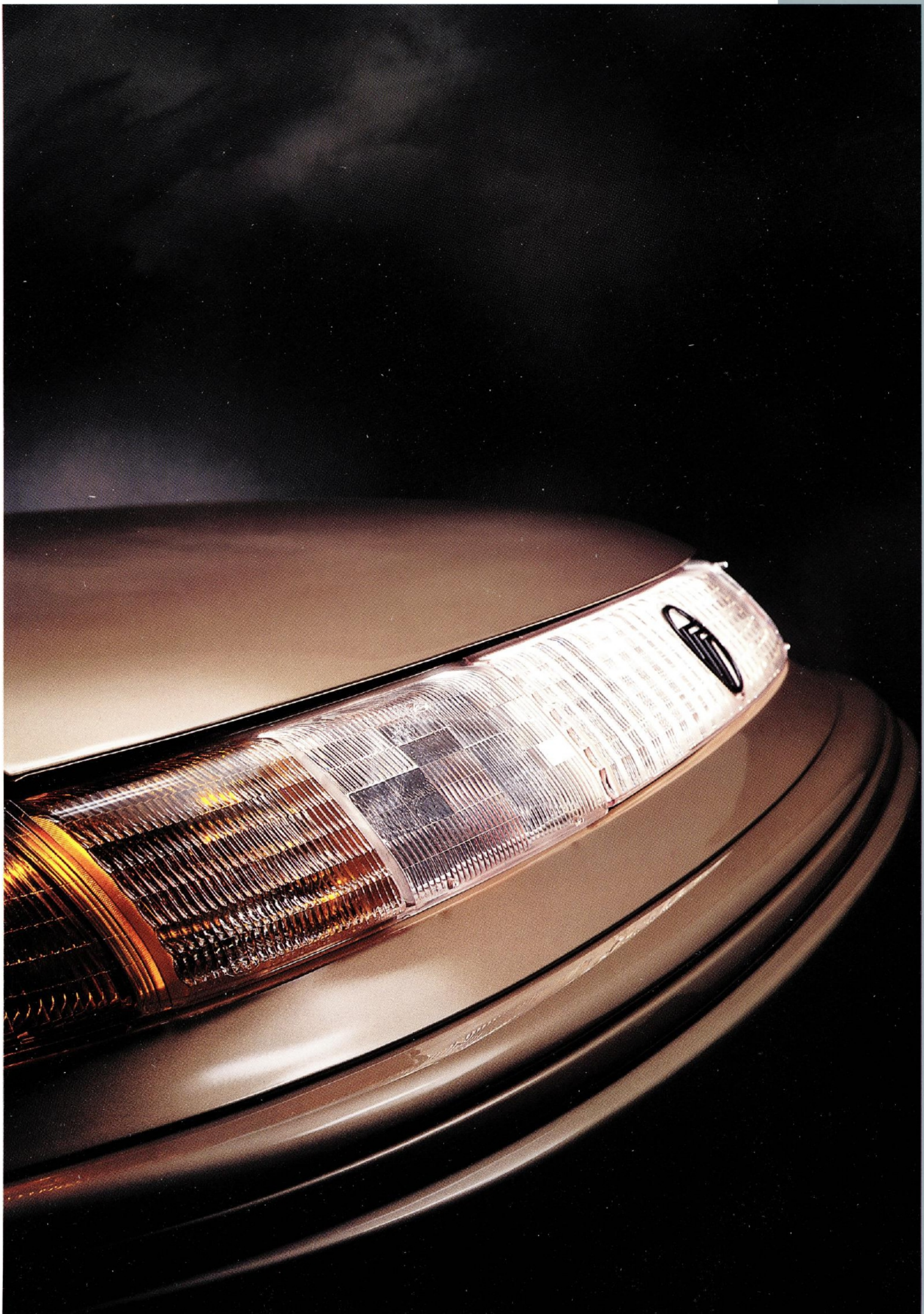


 **MERCURY SABLE**



1993



*Sable GS pictured in Mocha Frost Clearcoat.
Some features shown may be optional.*



**MERCURY SABLE.
WHY BLEND IN WITH THE
CROWD WHEN YOU CAN RISE
ABOVE IT.**

In an age of "cookie cutter" automotive design, Mercury Sable is not a car that blends in easily with the crowd.

A single glance reveals the most obvious of the reasons why: head-turning exterior styling

that integrates sculpted, graceful curves with distinctive cues that have become Sable trademarks.

And yet styling is only scratching the surface of Sable's personality. For while this is certainly a beautiful car to look at, it is equally enjoyable to drive with standard features like variable-assist speed-sensitive power steering, four-wheel independent

suspension and user friendly instrumentation and controls.

Both the accommodating Sable GS and the top-of-the-line Sable LS offer all the room, ride and comfort you'd expect in a Mercury. As well as a host of safety features designed to provide peace of mind to you and your family, including a standard air bag Supplemental Restraint

System for both the driver and right front passenger.

If all of this has attracted your attention, then perhaps you're ready to move beyond the compromises found in more traditional, middle-of-the-road family sedans and wagons.

Perhaps you're ready for a Mercury Sable.

**IMPECCABLE STYLE BACKED BY
REMARKABLE SUBSTANCE.**

While Sable is unquestionably one of the world's most recognizable automotive designs, judging it solely on appearances would be overlooking some of its more stunning virtues.

Consider the attention that is paid to preserving Sable's exterior. Two-sided galvanized steel is used

extensively on outer body panels to guard against rust and corrosion. Multiple primer coatings underneath Sable's rich basecoat act as additional shields against rust and corrosion as well as paint chipping.

The substance that is engineered into every Sable begins with a unitized body and front subframe reinforced with thousands of precision welds. This sturdy structure rides on a four-wheel independent

suspension which delivers a smooth ride that still holds the road with assurance on a tight curve.

A 3.0-liter V-6 engine with sequential electronic fuel injection (SEFI) is the source of Sable's fluid performance. It's matched to an advanced four-speed electronic automatic overdrive transaxle, which uses data from the EEC-IV computer to automatically select the best shift scheduling for the driving situation.

Sable LS pictured in Caribbean Green Clearcoat Metallic. Some features shown may be optional.



The protection is layered on during Sable's meticulous 23-step paint process, which includes

a resilient urethane coating in key areas that serves as a protective shield against paint chipping.

Thorough inspections are conducted to assure a finish that is consistently smooth and beautiful.

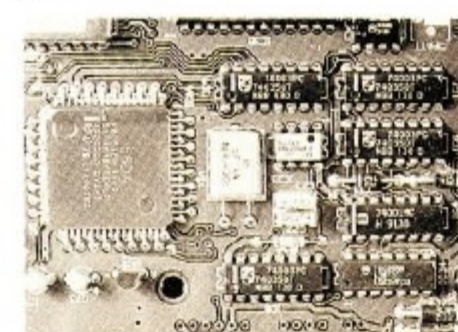
A four-speed automatic electronic transaxle precisely regulates gear changes for smooth, accurate shifting while optimizing efficiency through reduced engine speed and converter modulation.*

EEC-IV electronic engine control continuously monitors nearly every factor that affects engine and transmission operation, then decides within milliseconds how to best control a multitude of drivetrain functions.

Sequential Electronic Fuel Injection (SEFI) places a precise amount of fuel into each cylinder's intake port precisely when it is needed for optimal efficiency and performance.*

Sable offers all the confident, smooth power of a V-6 engine, whether you select the standard 3.0-liter or the optional 3.8-liter engine.

Sable's independent suspension system with front and rear stabilizer bars quietly smooths out the rough spots in the road while still delivering crisp, responsive handling.



Electrodeposition
applied primer coat
Galvanizing layer

Clearcoat (available with all colors except Oxford White)
Basecoat
Body spray primer
Urethane modified chip-resistant primer coating (frontal surfaces only)
Urethane chip-protective coating (lower bodyside only)
Electrodeposition applied primer coat
Galvanizing layer
Base metal

Sable's patented speed-sensitive variable-assist power rack-and-pinion steering progressively reduces the amount of steering assist as speed increases to provide the optimum

level of assist at any speed, whether you need high assist for low-effort parking or low assist for a secure feel of the road at highway speeds.



TECHNOLOGY DEVOTED TO HUMAN CONCERNS.

Although no car can promise absolute safety, Sable's many safety features help assure that protecting you and your passengers has been given every consideration.

For example, Sable includes as standard equipment an air bag Supplemental Restraint System for both the driver and right front passenger. (Remember to always wear your safety belt.)

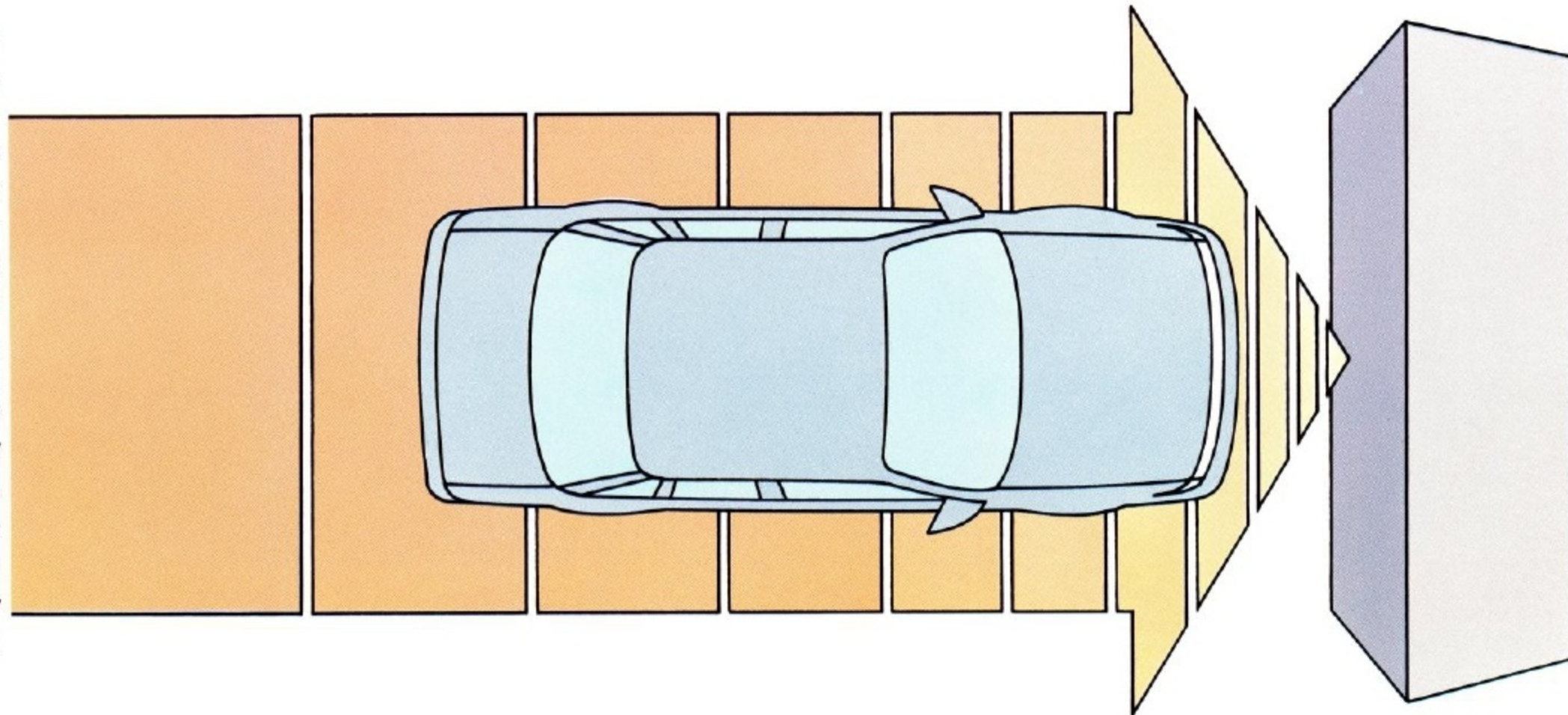
You can also opt for an available 4-wheel disc anti-lock brake system which provides added steering control while braking

on ice, snow or rain-slick roads.

Add to this advanced engineering a number of other important safety features: front and rear outboard lap/shoulder safety belts, brake/shift interlock, child-proof rear door locks, child seat tether anchorages, reinforced A pillars and roof for rollover protection, and more.

The point is, even though you may be a safe driver, you can never be too careful. You can, however, drive a Sable.

Sable's 5-mph front and rear bumpers have been successfully tested at twice the speed required by government standards. Should the collision be at greater speeds, crumple zones in the front and rear of Sable's unitized body will help absorb impact forces before they reach the passenger compartment.



Lap/shoulder safety belts are provided for front and rear outboard passengers.



Cornering lamps provide an added measure of night vision as you're turning a corner.



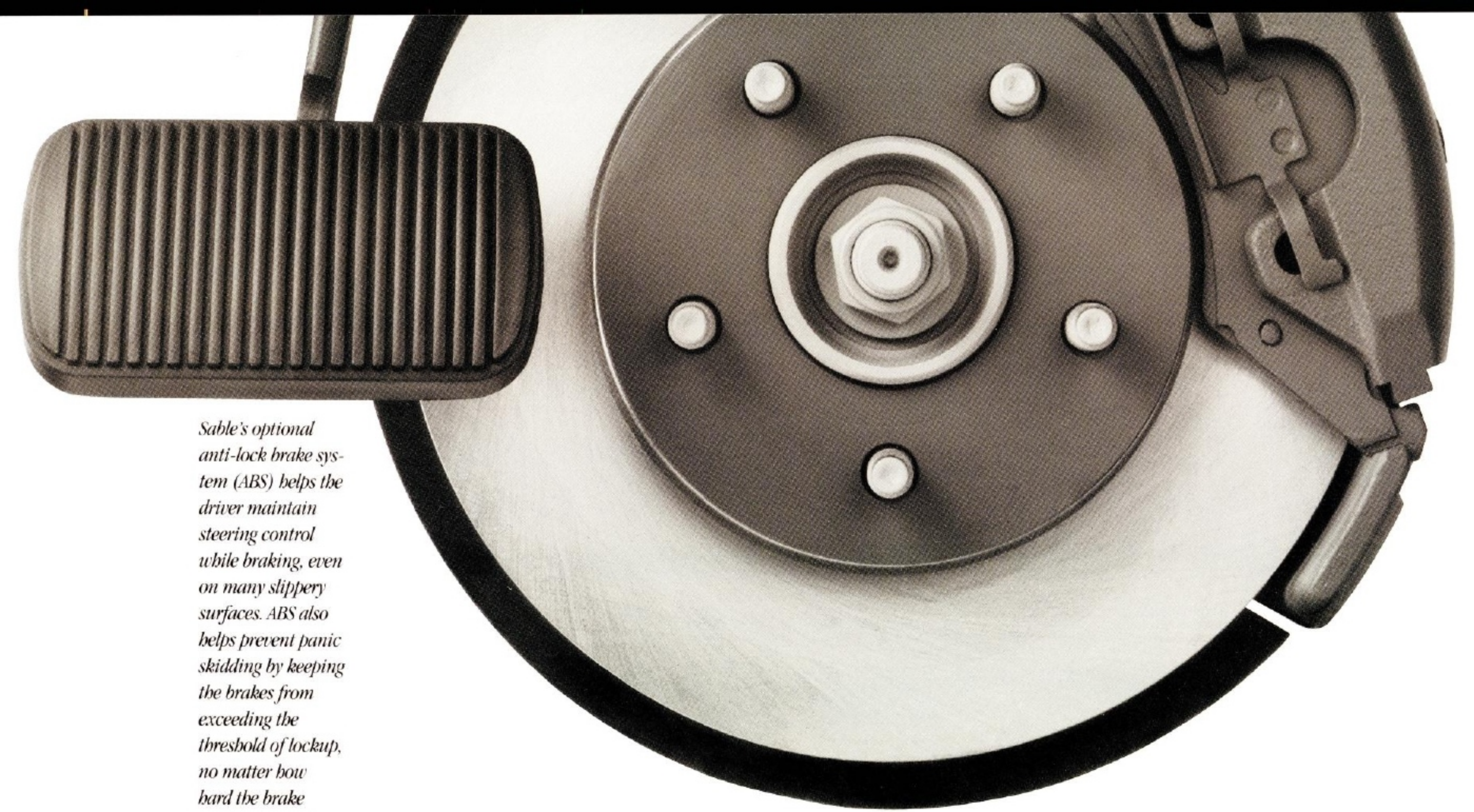
A brake/shift interlock prevents the transaxle from shifting out of park unless the driver's foot is on the brake pedal.



Sable's steering column is designed to absorb energy during a frontal impact to protect the driver.

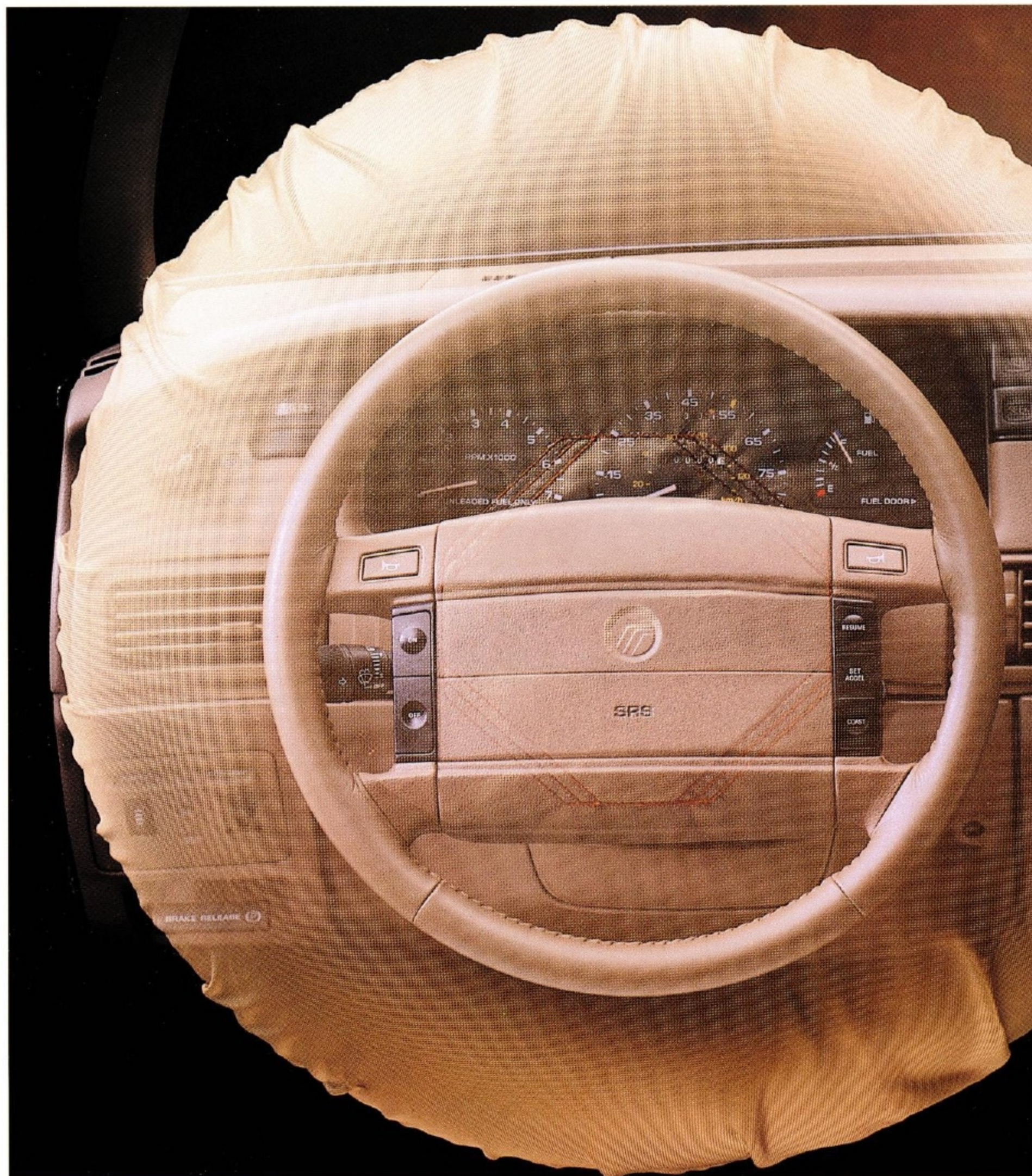


A heavy-gauge steel beam is welded into each Sable door for protection in a side impact.



Sable's optional anti-lock brake system (ABS) helps the driver maintain steering control while braking, even on many slippery surfaces. ABS also helps prevent panic skidding by keeping the brakes from exceeding the threshold of lockup, no matter how hard the brake pedal is pressed.

In moderate to severe front-end collisions, Sable's standard driver-side and right front passenger-side air bag Supplemental Restraint System inflates in less time than it takes to blink an eye.





Sable's standard tilt steering column tips up for easier entry and exit and is adjustable to your favorite position.



An electronic automatic climate control system, optional on LS, precisely maintains the temperature you select.



LS models offer the option of an electronic instrument cluster which provides digital readout of speed and distance as well as diagnostic information.



Rear-mounted speaker grilles and integral rear head restraints are contoured to provide the driver with improved rear visibility over the previous generation Sable.

THE ADVANTAGES OF DRIVING A SABLE ARE CLEARLY SEEN.

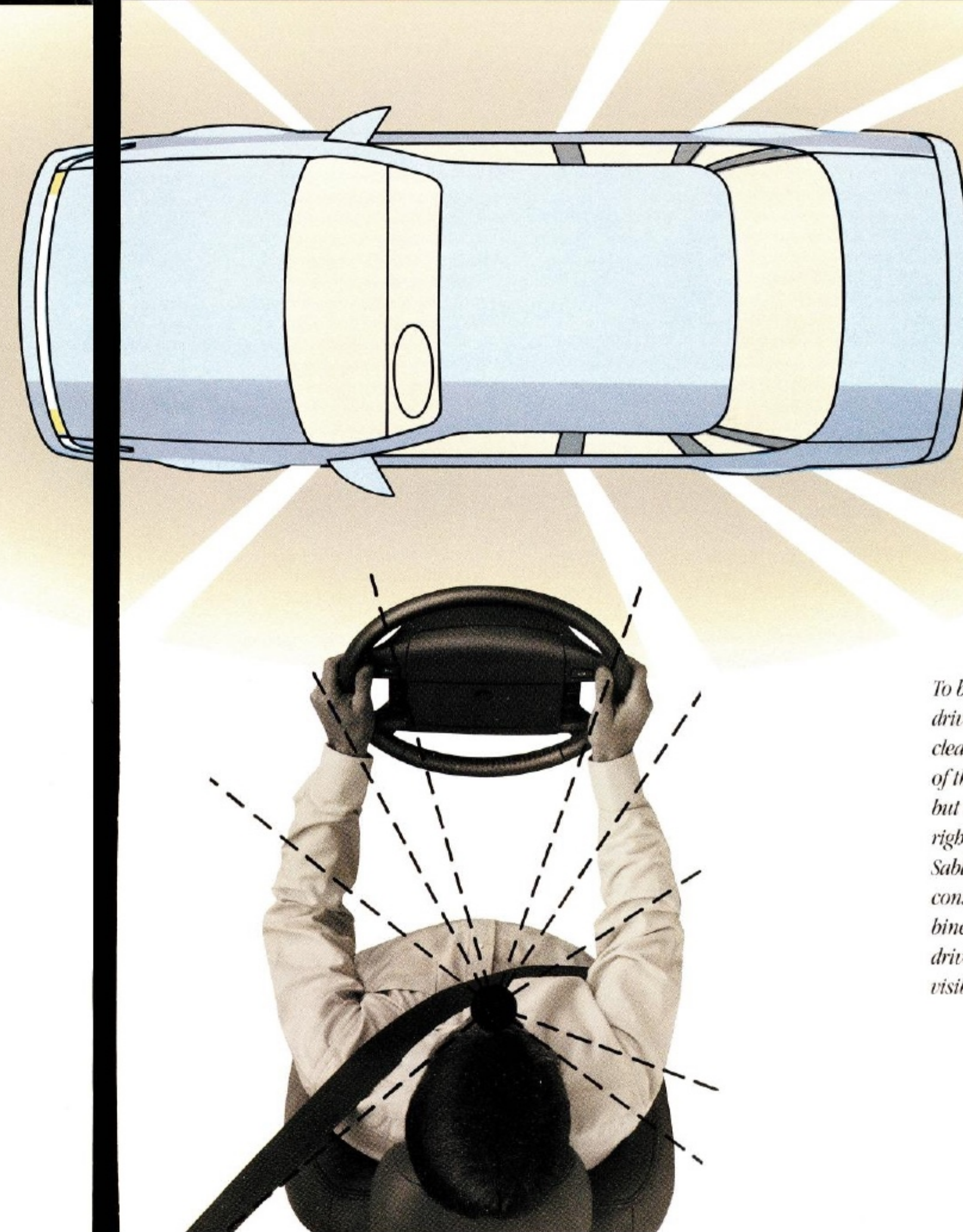
A safe driver is both comfortable and focused behind the wheel. Which is why Sable is thoughtfully designed to accommodate a driver's many needs.

As you can see in the picture above, Sable's instrumentation is highly visible and easily interpreted. Even instrumentation color and the size of incremental markings are carefully selected for viewing ease. A fast glance reveals necessary information, allowing your eyes to quickly return to the road ahead.

Sable's driver controls are designed with both placement and purpose as fundamental considerations. Functions like setting a speed control or adjusting radio volume are easy to reach and simple to execute. Each control is fashioned to perform with peak efficiency. For

example, a single stalk mounted on the left side of the steering column operates the turn signals, switches from low to high beams, flashes to pass, adjusts wiper speeds and sprays washer fluid at your command.

Standard amenities include a tachometer, digital clock, four-speed heater/defroster and air conditioner. LS models offer the option of an electronic climate control system which automatically maintains your desired temperature. This system is so advanced that it will automatically detect and compensate for heat generated by sunlight coming through the windshield.



To be in control a driver must have a clear view not only of the road ahead but also to the left, right and behind. Sable's design considerations combine to allow the driver wide-ranging visibility.

Sun visors on LS models include secondary visors to shield your view from blinding glare both in front and to the side.



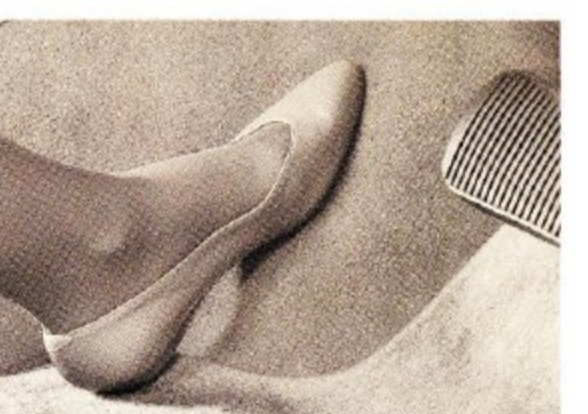
Windshield wipers offer high, low and variable intermittent speeds so you can adjust to the proper speed whether you're driving in a drizzle or a downpour.



Standard dual power mirrors provide excellent birdsight. They're tinted to help reduce glare.



This thoughtfully included footrest gives your left foot a comfortable place to relax on long trips.



An automatic parking brake release, standard on LS models, releases the parking brake when you shift out of park into forward gears.



A cup holder in the center console on models equipped with bucket seats provides a convenient place for your favorite beverage.



Sable's rear seat heat ducts offer passengers in the back a generous flow of direct warmth.



Controls for power windows, standard on LS, are illuminated and positioned to make them easy to use. The driver's window includes an "express-down" feature.



Activating the child-proof door locks keeps children in back from opening the rear doors from inside the car, while allowing doors to still be opened from outside.



Floor mounted remote releases for the trunk and fuel-filler doors are standard on LS and optional on GS models.



Sable's quiet interior offers a perfect environment for its standard electronic AM/FM stereo radio. Large, accessible controls make it easy to operate. But to make it even easier...



...Use these remote controls, which are ergonomically positioned near the top of the instrument panel so that you can adjust radio, cassette or compact disc volume, select preset stations or engage seek without taking your eyes off the road.



Front seat belt not shown in order to provide a clear view of vehicle interior.



Sable LS interior pictured with optional Mocha leather seating surfaces in the standard bucket seating configuration with center console and floor shift. Other equipment shown may be optional.

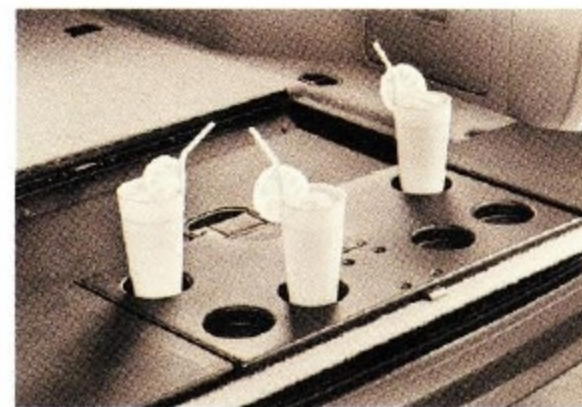
A COMFORTABLE, QUIET PLACE.

You and your family will spend many hours traveling. The purpose of Sable's plush interior is to make this time both comfortable and enjoyable.

Sable's 117.7 cubic feet of interior space assures ample room in either the front or back for full-sized adults to stretch out and relax. Whether you select the six-passenger seating configuration or front bucket seats with center console and floor shift (one is standard and the other is available at no additional cost, depending on the model you choose), you'll find comfortable, supportive seating.

The cabin is as quiet as it is comfortable, thanks to our engineers' devotion to suppressing even the smallest traces of noise and vibration. Generous amounts of sound-deadening insulation reduce drivetrain and road noise, while tuned vibration absorbers in the rear suspension and double isolated front and rear struts help further absorb unwanted sound. All you notice is how easy it is to have a conversation, even at highway speeds.

This optional picnic tray is ideal for tailgate parties or picnicking in the park.



Add room for two additional passengers with this optional rear facing third seat.



This lockable rear compartment offers added storage room to conceal smaller items from view.



Floor mounted remote releases for the liftgate and fuel-filler doors are standard on LS Wagon.*



*Liftgate release subject to late availability.

Sable LS Wagon pictured in Medium Cranberry Clearcoat Metallic. Some features shown may be optional.



Sable Wagon's 60/40 split-fold rear seat increases your flexibility to carry both passengers and cargo. The Sable LS Wagon interior is pictured here with optional Opal leather seating surfaces. Other features shown may be optional.

SABLE WAGON.

PRACTICALLY BEAUTIFUL.

We all like to possess beautiful things. And when one of these beautiful things also possesses the practicality of a Sable Wagon, so much the better.

While Sable Wagon looks like a Sable Sedan, it is still very much a working wagon. There's 81 cubic feet of cargo capacity in back with the rear seat folded down. Furthermore, Sable Wagon's independent rear suspension is specifically calibrated for the tasks a wagon performs.

Yet Sable Wagon also offers the same plush interior comfort and user friendly controls as Sable Sedan. It includes speed-sensitive variable-assist power steering. And it offers a standard driver-side and right front passenger-side air bag Supplemental Restraint System, as well as an available Anti-lock Brake System (ABS).

Sable Wagon's liftgate presents you with a couple of cargo loading choices.

If the items are small, you can load them simply by flipping up the liftgate window.

Or you can raise the entire liftgate for loading larger, heavier or longer cargo.





< A twin comfort seating configuration in cloth is standard on GS Sedans and Wagons.

> GS Sedans also offer the no-cost option of front bucket seats in cloth with center console and floor shift.



< Twin comfort seating is standard on LS Wagons, and may be ordered at no additional cost on LS Sedans.

> Front bucket seats are standard on LS Sedans, and available with leather seating surfaces in LS Sedans or Wagons.



DIMENSIONS (in inches)	Wheelbase	Overall length	Overall width	Overall height	Track	Headroom	Legroom	Shoulder room	Hiproom
Sedan	106.0	192.2	71.2	54.1	front 61.6 / rear 60.5	front 38.3 / rear 37.7	front 41.7 / rear 37.1	front 57.5 / rear 57.5	front 54.8 / rear 55.6
Wagon	106.0	193.0	71.2	55.4	front 61.6 / rear 59.9	front 38.6 / rear 38.1	front 41.7 / rear 36.9	front 57.5 / rear 57.5	front 54.8 / rear 57.0
ENGINES	Type	Displacement	Horsepower (SAE net)	Torque (SAE net)	Fuel	Fuel delivery	Compression ratio	Engine control	
	V-6 60 degree OHV	3.0 liters	140 @ 4800 rpm	165 lb-ft @ 3250 rpm	16.0 gal., 18.4 gal. with optional extended-range tank	Sequential electronic multi-port fuel injection	9.3:1	EEC-IV, electronic engine control	
	V-6 90 degree OHV w/balance shaft	3.8 liters	140 @ 3800 rpm	215 lb-ft @ 2200 rpm			9.0:1		

CAPACITIES	Cargo volume (cu. ft.)	Oil	Engine coolant	Curb weight	BRAKES	Front	Rear	Sleept area	Type	STEERING
Sedan	18.0	4.5 qt. (w/filter)	10 qt. on 3.0L V-6, 12.1 qt. on 3.8L V-6	3,165 lbs*	Sedan	10-inch disc	8.9-inch drum	270.4 sq. in.	4-wheel hydraulic actuated with diagonal split	Speed-sensitive variable-assist power rack-and-pinion
Wagon	38.0/81.1 (seatback down)	4.5 qt. (w/filter)		3,314 lbs**	Wagon	10-inch disc	9.8-inch drum	296.8 sq. in.		
TRANSAXLE	SUSPENSION									
Electronically controlled four-speed automatic overdrive with torque converter lock-up in third and fourth gears	Front—Independent MacPherson nitrogen gas-pressurized struts with coil springs, tension struts, stabilizer bar and lower control arm. Rear—Sedan: Independent parallel four-bar arm design, nitrogen gas-pressurized struts, stabilizer bar and coil springs. Wagon: Independent short and long arm, nitrogen gas-pressurized shocks, stabilizer bar and variable-rate coil springs									

FUNCTIONAL FEATURES	GS SEDAN	GS WAGON	LS SEDAN	LS WAGON
Driver-side air bag Supplemental Restraint System	S	S	S	S
Passenger-side air bag Supplemental Restraint System	S	S	S	S
4-wheel disc anti-lock braking system	0	0	0	0
Rear child-proof door locks	S	S	S	S
Brake shift interlock and audible brake wear sensors	S	S	S	S
Stainless steel extended-life exhaust system	S	S	S	S
Sound insulation package	S	S	S	S
Tinted glass	S	S	S	S
Side window defoggers	S	S	S	S
Interval windshield wipers	S	S	S	S
Rear wiper/washer		0		0
Warning lights for washer fluid, headlamp or taillamp outage, low fuel, low oil, door ajar			S	S
Load floor tie-down hooks		S		S
Cargo net			S	S
Electric rear window defroster	0	0	0	0
3-point lap/shoulder safety belts for front and rear outboard occupants	S	S	S	S
Heavy-duty suspension	0	0	0	0
Heavy-duty battery	0	0	0	0
Extended-range fuel tank (18.4 gal.)***	0	0	0	0

EXTERIOR FEATURES	GS SEDAN	GS WAGON	LS SEDAN	LS WAGON
Five-mph impact bumpers front/rear	S	S	S	S
Dual power mirrors	S	S	S	S
Aero halogen headlamps	S	S	S	S
Lower door and rocker panel protective urethane coating	S	S		
Lower bodyside color-keyed cladding/protection			S	S
Aerodynamically styled roof-rack		S		S
Remote keyless entry system			0	0
Multi-sport roof rack (ski, bicycle, watersport)	A	A	A	A
Front end cover	A	A	A	A

INTERIOR COMFORT AND CONVENIENCE FEATURES	GS SEDAN	GS WAGON	LS SEDAN	LS WAGON
Air conditioner	S	S	S	S
Air conditioner with electronic automatic temperature control			0	0
Coin and cup holder trays†	S	S	S	S
Light group: Includes dual-beam dome light (except with moonroof), engine compartment light, instrument panel courtesy light and headlamps-on chime	0	0	S	S
Twin comfort seats with dual recliners	S	S	0†	S
Individual bucket seats with floor shift and console with cup holder	0†		S	0†
Front-seat power lumbar supports			S	S
Four-way front seat headrests			S	S
60/40 split fold-down rear seat		S		S
Six-way power driver's seat	0	0	0	0
Six-way power driver and passenger seats	0†	0	0	0
Rear-facing third seat		0		0
Leather seating surfaces			0	0
Automatic parking brake release			S	S
Leather-wrapped steering wheel	0	0	0	0

S Standard feature 0 Optional feature A Dealer-installed accessory

INTERIOR COMFORT AND CONVENIENCE FEATURES (continued)	GS SEDAN	GS WAGON	LS SEDAN	LS WAGON
Power moonroof			0	0
Rear cargo area cover		0		0
Digital clock	S	S	S	S
Tilt steering column and speed-sensitive variable-assist power steering	S	S	S	S
Fully trimmed luggage compartment with light	S	S	S	S
Front door map pockets	S	S	S	S
Dual visor mirrors	S	S		
Dual illuminated visor mirrors			S	S
Rear seat center fold-down armrest			S	
Integrated rear seat outboard head restraints	S			
Power windows	0	0	S	S
Fingertip speed control	0	0	0	0
Power lock group: Includes door locks (on GS and LS), and fuel-filler door and decklid/liftgate†† releases (on GS, standard on LS)	0	0	0	0
Front and rear floor mats	0	0	0	0
Picnic tray		0		0
Autolamp on/off delay system			0	0
Remote anti-theft system	A	A	A	A

SOUND SYSTEMS	GS SEDAN	GS WAGON	LS SEDAN	LS WAGON
Instrument panel mounted radio control (seek, memory presets and volume)	S	S	S	S
Electronic AM/FM stereo with four speakers (may delete for credit)	S	S	S	S
Electronic AM/FM stereo with cassette	0	0	0	0
Premium Sound—power amplifier, 60 total watts RMS and upgraded speakers	0	0	0	0
High-Level electronic AM stereo/FM stereo cassette audio system with power amplifier, 80 total watts RMS	0	0	0	0
Ford JBL Audio System—four-channel equalized and one subwoofer amplifier with 145 watts total power and upgraded speakers	0		0	
Digital compact disc player with music search, scan and shuffle features (requires High-Level or Ford JBL Audio System, replaces coin/cup holder tray)	0	0	0	0
Automatic power antenna	0	0	0	0
Trunk-mounted 10-CD compact disc changer with remote control	A	A	A	A

INSTRUMENTATION	GS SEDAN	GS WAGON	LS SEDAN	LS WAGON
Analog instrumentation with speedometer, tachometer, engine coolant temperature gauge, fuel gauge and trip odometer	S	S	S	S
Electronic instrument cluster with speedometer, tachometer, engine coolant temperature gauge, fuel gauge, trip odometer, fuel/distance computer and Diagnostic Systems Scanner			0	0
WHEELS AND TIRES	GS SEDAN	GS WAGON	LS SEDAN	LS WAGON
P205/65R15 black sidewall with 15-inch deluxe wheel covers	S	S	S	S
15-inch cast-aluminum wheels	0	0	0	0
Mini spare tire	S	S	S	S
Conventional-size spare tire with black steel wheel	0	0	0	0

* 3.0L GS Sedan: 3,122 lbs. ** 3.0L GS Wagon: 3,271 lbs. *** Not available with electronic instrument cluster.
† Deleted if compact disc player or individual bucket seats are ordered. †† No cost option.
‡ N/A on GS Sedan with individual bucket seats. ‡‡ Late availability.
§ Specific content is subject to change throughout model year. Consult your dealer for the most up-to-date information.
§§ Not available on Sable wagon models.
Based on official MMVA specifications.
For more information on available accessories see your Lincoln-Mercury Dealer.

PREFERRED EQUIPMENT PACKAGES

To make ordering easy we've grouped certain options together into the Preferred Equipment Packages listed below. And priced them to offer sticker price savings over ordering these items individually.

	GS SERIES 450A 451A	LS SERIES 461A 462A
Fingertip speed control	•	•
Bodyside paint stripe	•	•
Electric rear window defroster	•	•
Power side windows	•	•
Power lock group	•	•
Electronic AM/FM stereo cassette radio	•	•
Six-way power driver's seat	•	•
15-inch cast-aluminum wheels	•	•
Light group	•	•
Front and rear carpeted floor mats	•	•
Leather-wrapped steering wheel	•	•
3.8L SEFI V-6 engine	•	•
Power radio antenna	•	•
Premium Sound system	•	•
High-Level electronic AM/FM stereo cassette audio system	•	•
Electronic automatic air conditioner	•	•
Autolamp on/off delay system	•	•
Keyless entry	•	•
Electronic instrument cluster	•	•

EXTERIOR COLORS

Oxford White • Crystal Blue Frost Clearcoat • Mocha Frost Clearcoat • Black Clearcoat • Medium Cranberry Clearcoat Metallic • Dark Plum Clearcoat Metallic • Royal Blue Clearcoat Metallic • Caribbean Green Clearcoat Metallic • Opal Grey Clearcoat Metallic • Silver Clearcoat Metallic

INTERIOR COLORS

Ebony§§ Crystal Blue Opal Grey Mocha Cranberry

PRODUCT CHANGES

Following publication of this catalog, certain changes in standard equipment, options, prices and the like, or product delays, may have occurred which would not be included in these pages. Your Lincoln-Mercury dealer is your best source for up-to-date information.
Lincoln-Mercury Division reserves the right to change product specifications at any time without incurring obligations.



This optional power moonroof is available on Sable LS Sedan and Wagon.



Optional keyless entry on LS models allows you to lock or unlock doors and open the trunk without a key.



The optional power antenna automatically retracts when the radio or ignition is turned off to prevent vandalism or damage in car washes.

Optional fingertip speed control includes controls so perfectly positioned, they're patented.

This 15" deluxe wheel cover comes standard with your Sable.

Or you can order these optional 15" cast aluminum wheels with locking lug nuts.

Chances are, you started your day by starting your car.

Tens of millions of us do. Every day. All over the country. Surely, nothing we own is more closely and constantly intertwined with our lives than the automobile.

At Lincoln-Mercury we never lose sight of the fact that our products go on to play a major part in the lives of people. That's why we're dedicated to bringing you cars that will not only serve you faithfully but also will help make your life more enjoyable.

Stop by your Lincoln-Mercury dealer and see what we've been doing.

Motorcraft
QUALITY PARTS

Genuine Ford and Motorcraft original equipment replacement parts are engineered and manufactured to Ford's highest specifications. They're your best assurance of quality and long-term satisfaction because these replacement parts meet the same high standards as those installed in production.



Ford Credit offers advantageous financing arrangements for qualified buyers, plus the convenience of making them right where you buy your car—at your Lincoln-Mercury dealer.

As an alternative to car ownership that may well suit your needs, there's Ford Credit's Red Carpet Lease Plan. Ask for the facts on leasing at your Lincoln-Mercury dealer.

DEMAND GENUINE FORD
COLLISION REPAIR PARTS



Genuine Ford sheet metal and plastic replacement collision parts, such as hood, doors, fenders and bumper components, are the right choice should you be involved in an accident. Genuine Ford collision parts are equal in fit, finish, structural integrity and corrosion protection to original parts. Ford collision parts are the same as those used on new vehicles which are certified to meet Federal Motor Vehicle Safety Standards for crash worthiness. All Ford sheet metal replacement parts are covered by the exclusive Ford Lifelong Sheet Metal Guarantee. Beware of imitations; insist that your insurer authorize genuine Ford collision parts.



The optional Ford Extended Service Plan covers selected components on new Mercury cars following the expiration of the vehicle's basic warranty. Most plans also provide rental reimbursement for covered warranty or ESP repairs. The cost is so moderate for the ESP protection offered that it could pay for itself the first time it is needed. Ask your participating Lincoln-Mercury dealer for complete details of the plans, which are available on cars sold and normally operated in the 50 United States and Canada.



EPA statement: 1993 EPA mileage estimates were unavailable when this publication was printed. The 1993 Mercury Sable, however, should post good mileage figures. Ask your Lincoln-Mercury dealer for the latest information.

Option availability: Options shown or described in this catalog are available at extra cost and may be offered only in combination with other options or subject to additional ordering requirements or limitations.

Capri



Tracer



Topaz



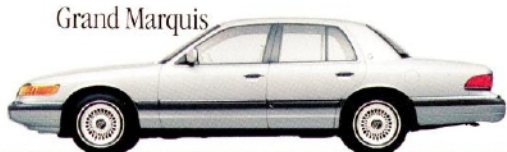
Cougar XR7



Sable



Grand Marquis



Villager



 All This And The Quality Of A Mercury.

LINCOLN-MERCURY DIVISION 