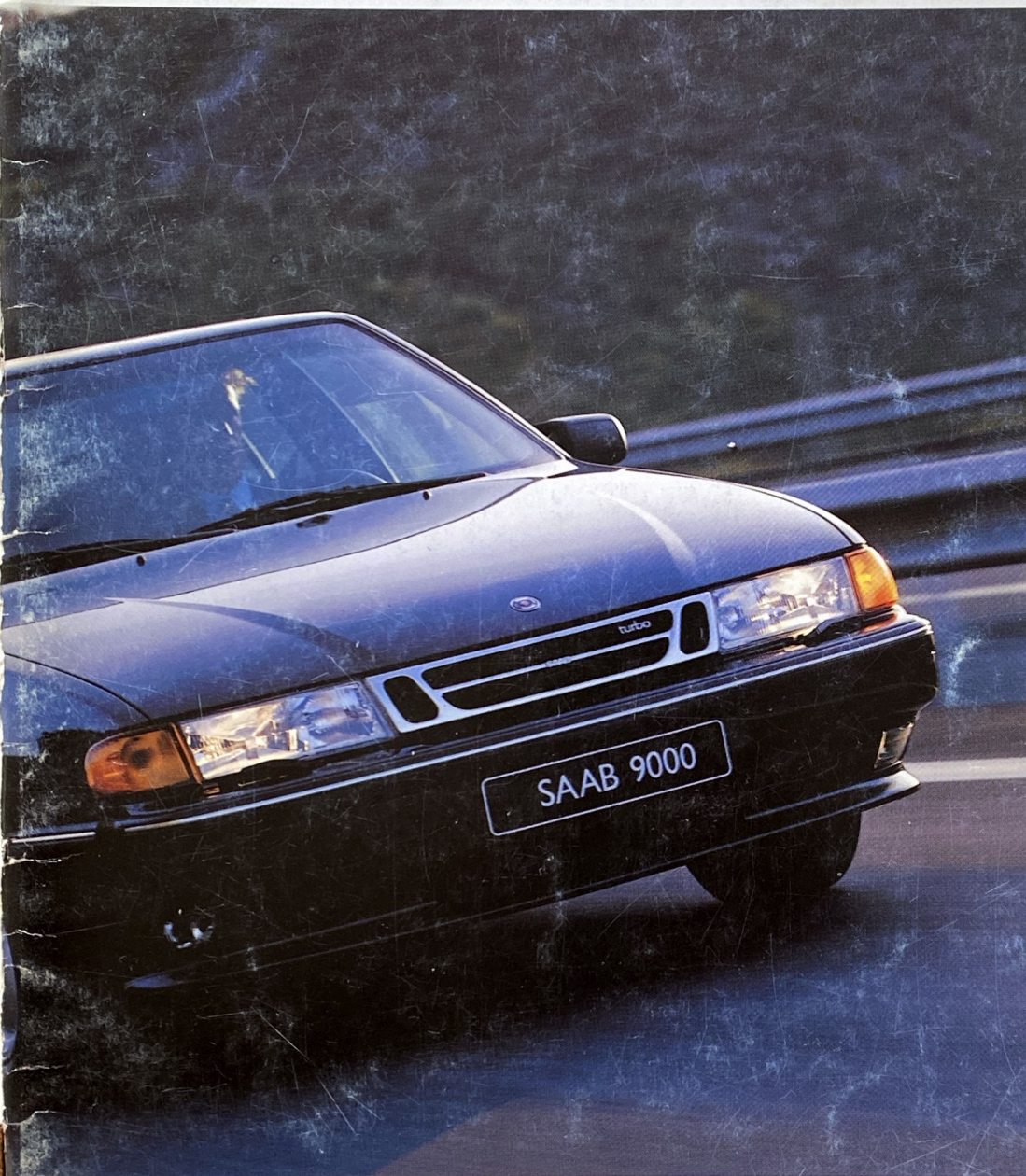


Saab 9000

1994



Crossway Saab

365 River St. (Barre-Montpelier Rd.) Montpelier, Vt. 05602

Sales Representative

Bus: 802-223-9580
WATS: 800-639-4095
FAX: 802-223-9584



SAAB



SAAB

No matter where the road leads you, Saab has a car to get you there.

For 45 years, Saabs have been owned and appreciated by drivers with an unbending passion for the open road. And in 1994, that passion can be played out in several ways. There's the perfor-



mance-driven 9000 CS, CSE and Aero, or the luxurious 9000 CDE.

To discern which model Saab is most suited to your taste, test-drive one or all 1994 Saab 9000's. If you do, you'll discover they all share a similar trait: Once behind the wheel, you're in complete control of the roads that lie ahead.

The Saab 9000 Aero: A rare act of aggression from Sweden.

Press the accelerator in the 9000 Aero and the power generated by its 225-hp 5-speed manual power plant is readily apparent, to both you and the automobiles disappearing in your rearview mirror.

In the Saab 9000 Aero, of course, power isn't all that's used to drive performance. This engine works in concert with a new lowered suspension that boasts stiffer springs, thicker stabilizer bars and newly designed front struts, to deliver the most responsive and agile Saab to date. An aggressive claim to be sure, but one the 9000 Aero is more than equipped to back up.



The modified suspension of the 9000 Aero enhances roadholding capabilities through tight twists and turns.



Like the '94 Saab 9000 Aero, this '46 model was built for performance. It sported a drag coefficient - .30 - that's low even by today's standards.

In a performance car, the interior must do more than just sit there.



Full leather seats are fashioned from carefully selected hides.

The Saab 9000 Aero is outfitted with rally-inspired sport seats in all four outboard positions. Covered in leather, these seats are sculpted for postural support and incorporate side bolsters to keep occupants securely positioned during aggressive cornering. The front seats are power-adjustable. Automatic Climate Control, power glass sunroof and compact disc player are standard to ensure that the level of luxury in the 9000 Aero is equal to the level of performance.



Both front seats are heated and electrically powered. And the driver's seat can be programmed to remember your favorite positions.

Leather insets with a special high-friction property help keep driver and passengers firmly in their seats even through aggressive cornering.



1994. It's time to redefine the Sports Sedan. The 9000 CS and the 9000 CSE.

Although the 9000 CS and CSE do not appear overly large on the exterior, their interiors are among the largest of any European imports.



Sports sedans, engineered with little regard for safety or environmental considerations, seem more than a little bit selfish in today's world.

However, that should not preclude

the socially conscious from enjoying the pure fun of driving and the beauty of an open road. To assure that they can, Saab supplies the following offerings: the 9000 CS and CSE.

Both cars provide up to 200 horsepower, but do so without compromising fuel efficiency or increasing emissions.

Both offer Automatic Climate Control, but rely on a refrigerant that contains

zero chlorofluorocarbons. And both are built to Saab's notoriously rigid standards of safety.

The Saab 9000 CS and CSE. Sports sedans have never been better defined.



Saab's Trionic Engine Management System and system of emissions control help people, and trees, breathe easier.

Saab owners are individualistic. But they occasionally travel in groups of five.



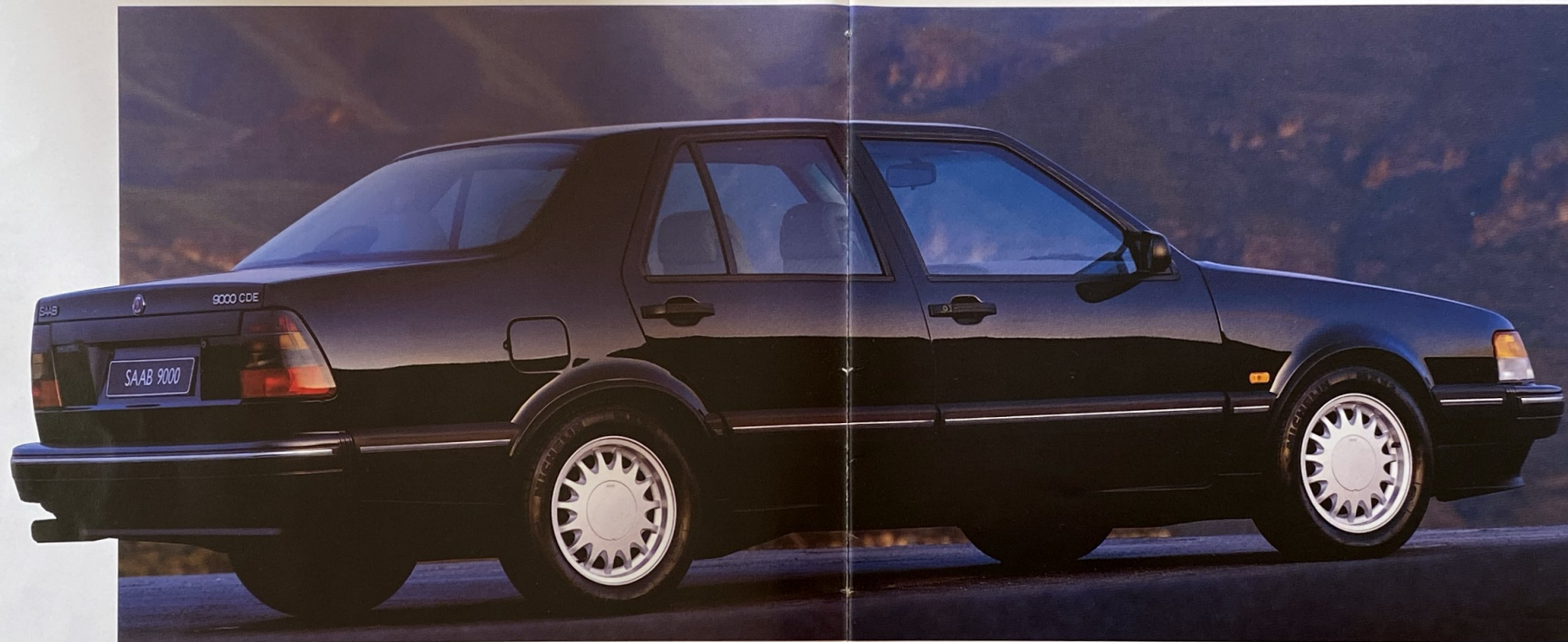
To help keep the interior cool, heat-absorbing glass on all 9000's screens out 50% of the sun's radiated heat. This also allows for more efficient use of the climate control system.



Both the 9000 CS and CSE can comfortably accommodate five adults along with ample space for their luggage. This helps explain why the U.S. Environmental Protection Agency designated these automobiles as "Large" cars. And that's hardly a small consideration when you're looking for a sports sedan.



Luxury without lethargy.
The Saab 9000 CDE.



Most luxury sedans are missing one essential amenity: exceptional handling. Don't count the 9000 CDE among the missing. With its tactile feel for the road, the Saab chassis provides the per-

fect link between driver and the surface below.

Handling is also enhanced by MacPherson struts, rack-and-pinion steering, front and rear stabilizer bars and the use

of a lightweight beam-type rear axle.

For superior traction, Saab's front-wheel-drive system balances the majority of the car's weight over the driven wheels. This is another reason that the percent-

ages are in our favor when you're looking for a luxury car that performs.



Front-wheel drive, rally-bred suspension and anti-lock braking all contribute to Saab's superb handling.



A luxury interior you'll enjoy for a wealth of reasons.



Saab's unique electrostatic ventilation system keeps cabin air almost completely free of both dust and pollen.

The interior of the 9000 CDE is as well-appointed as those of sedans costing thousands more.



And those reasons are: an Automatic Climate Control System that's CFC-free and traps so many particles that it's nearly pollen-free; electrically operated win-

dows and mirrors; heated front seats and sideview mirrors; honest seating for five adults and ample space in the trunk to carry their luggage; a map light that

swivels to help show you the way; and enough storage space to carry everyone's personal belongings.

Creating luxury with practicality is a

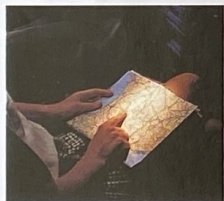
necessary combination to those who design the interior of the Saab 9000 CDE.



Reading lamps provide a direct light to rear passengers; not a distraction to the driver.



Any resemblance to what you see here
and a jet cockpit is purely intentional.

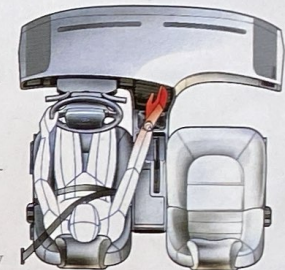


A spotlight that swivels
into position makes it easier
to map out your trips.

Originally, Saab was exclusively an
aircraft manufacturer. Today, those origins
are on display within the cockpit-like
environment of the 1994 9000's.

That's why you'll find logically placed
controls, readable instruments,
and a seat that holds
the driver in a relaxed
and ready posture.

And that's a com-
manding position to
be in for those who fly
jets or pilot Saabs.

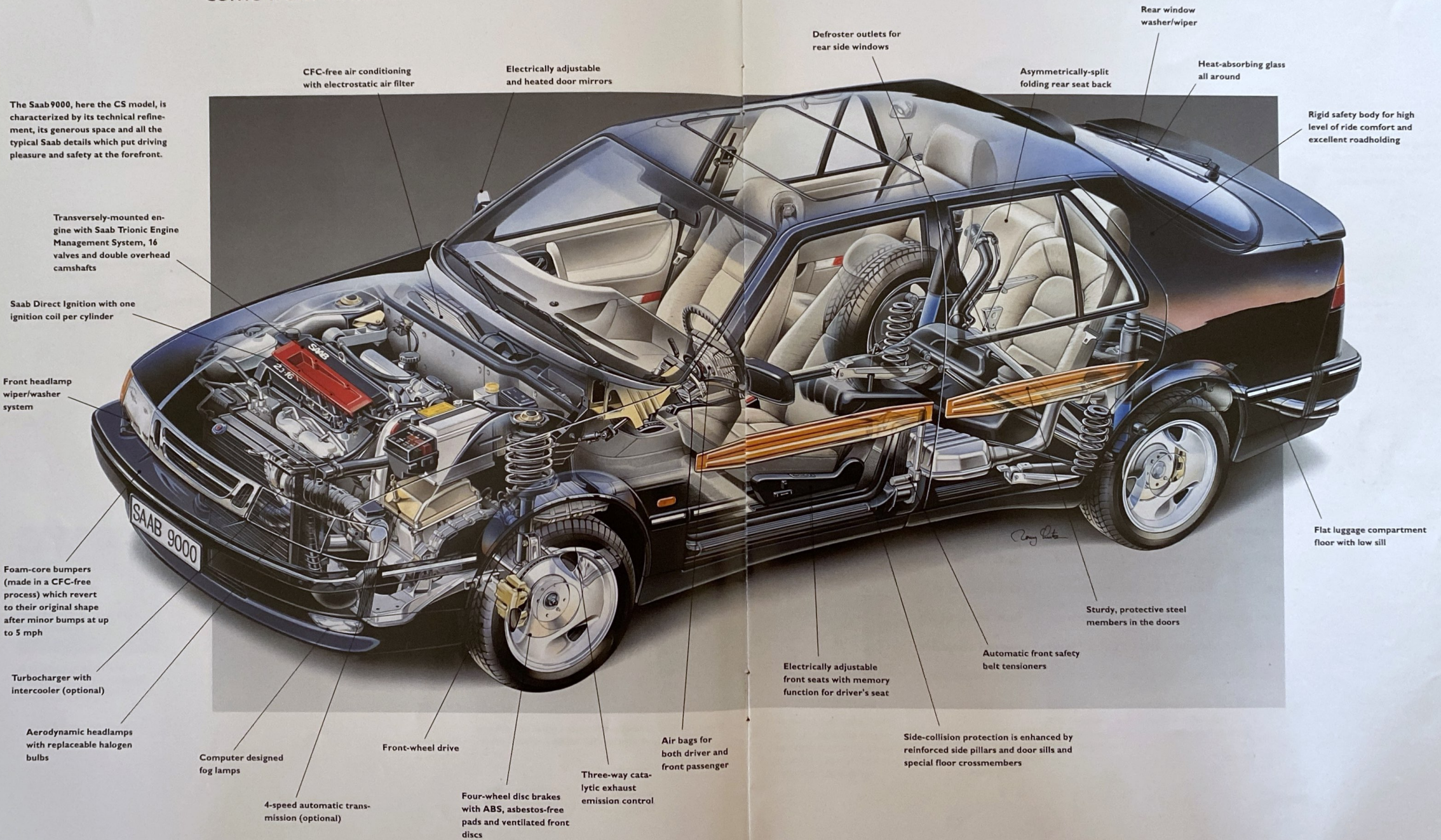


Since the 9000 is designed from the point of a driver's
hip, all controls fall within a natural reach.



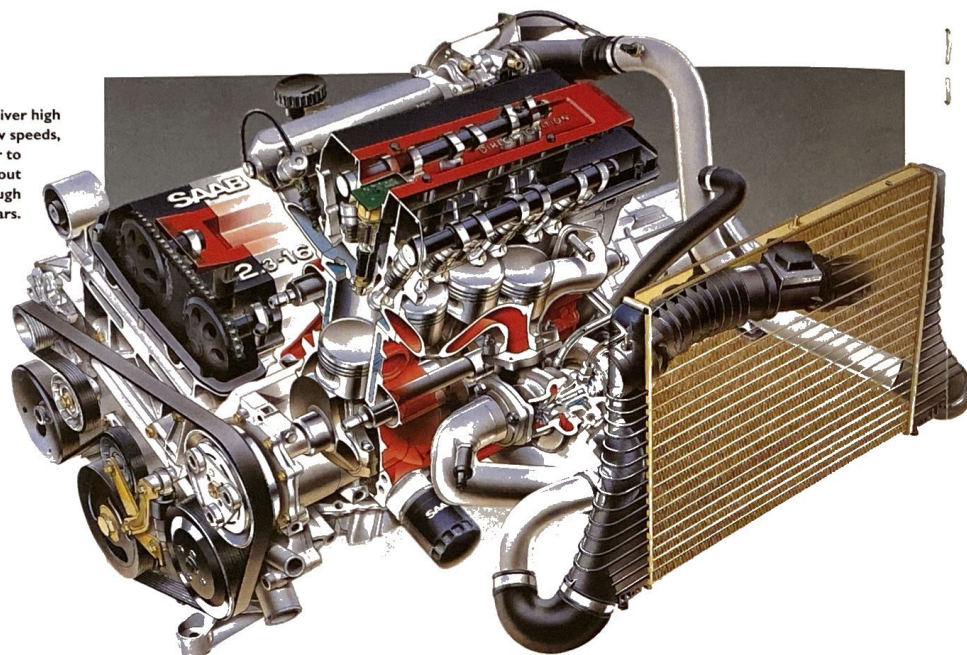
Many of the reasons to own a Saab come from within.

The Saab 9000, here the CS model, is characterized by its technical refinement, its generous space and all the typical Saab details which put driving pleasure and safety at the forefront.



Saab engines offer an abundance of power without an abundance of waste.

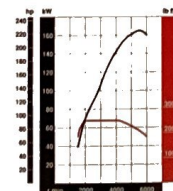
Saab engines deliver high torque at low speeds, giving you the power to pass vehicles without having to shift through the lower gears.



The easy way to produce a lot of power in an engine is to burn a lot of fuel. Saab engineers never take the easy way out. The 2.3-liter, 16-valve engine provides a prime example of that determination. Lightweight, compact and extremely efficient, this power plant delivers the smoothness and power associated with

engines of much larger stature.

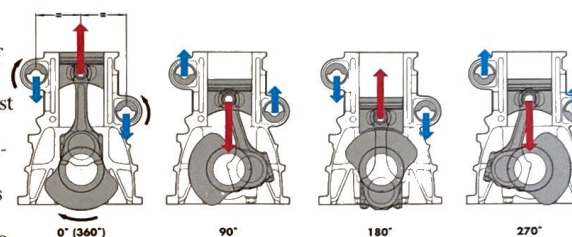
To accomplish this engineering feat, Saab begins with a modest-size block and a cylinder head made of aluminum alloy. The combustion chambers have four



The 2.3-liter turbocharged engine develops very high torque (red curve in diagram) at critical speeds – 238 foot-pounds at 1,800 rpm.

valves instead of two. This arrangement allows the spark plug to be centrally positioned, thereby improving combustion and performance.

In the turbocharged version of this engine, exhaust gases drive a compressor that forces more air into the



The 2.3-liter naturally-aspirated and turbocharged engines have dual counter-rotating balance shafts to greatly reduce engine vibration.

cylinders to produce more on-demand power. An intercooler cools the incoming air, allowing a denser air/fuel mixture.

Combining the advantages of both larger and smaller engines, the 2.3-liter engine provides Saab owners with the best of both worlds.



The improved synchromesh on the new 5-speed manual gearbox makes gear changes easier and smoother.

The environment that exists outside a Saab is as important as the one that exists inside.



The prestigious German medical journal, *STATUS*, recently recognized the Saab 9000 as the most environmentally friendly car in its class.

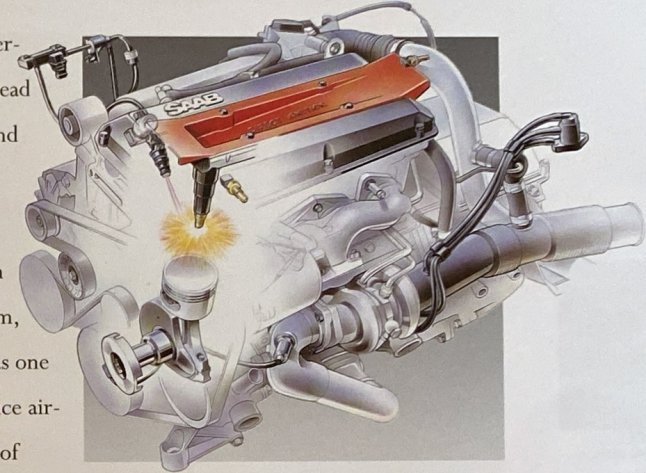


Saab's environmental engineering has consistently been years ahead of legislative requirements around the world.

For example, Saab was an industry leader in the elimination of asbestos from its braking system, clutch discs and gaskets. Saab was one of the first carmakers to introduce air-conditioning that's entirely free of chlorofluorocarbons. Saab's development of turbocharging was driven by a desire to create an engine that delivers on-demand power with reduced fuel consumption and emissions. And over the years, Saab engineers have continued to design cars so that today, many of the materials used to build Saabs are recyclable.

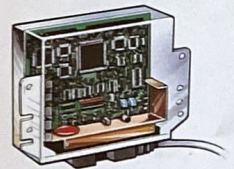
More recently, Saab created the Trionic Engine Management System. Installed on all Saab 9000's, this system controls ignition and fuel injection (plus boost

The Saab Trionic Engine Management System improves fuel efficiency while reducing emissions.



pressure on turbocharged models) not only to increase performance, but to greatly reduce emissions.

So no matter what color Saab you choose, you can be sure that the Saab you're choosing is green.

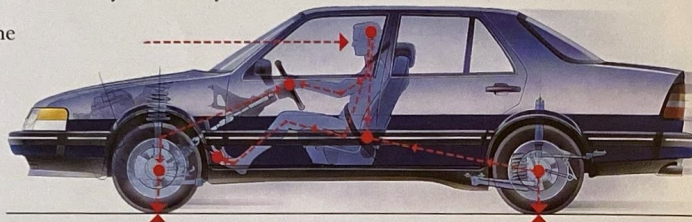


The brain behind the Trionic Engine Management System is a 32-bit microprocessor that's more powerful than most PCs.



How a Saab helps you avoid the unavoidable.

Steering clear of an accident requires more than a steering wheel. It requires an entire automobile engineered around the principles of "active safety", whereby the car – and the driver – must be equipped to avoid an accident.



To accomplish that, Saab engineered a chassis and suspension system that constantly feeds the driver information about the road. Supplementing that knowledge is the superior traction that comes from a design that places the majority of the car's weight above the front-wheel-drive system.

Equally clever is Saab's Anti-lock Braking System, capable of making instantaneous adjustments in the braking pressure applied to the wheels, helping to prevent skids and allowing the car

to be steered past obstacles even during panic stops.

And when those obstacles are four-

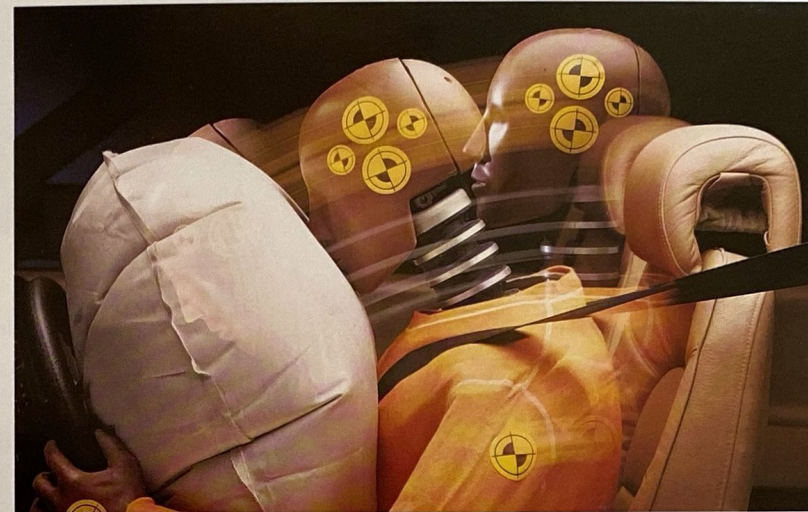
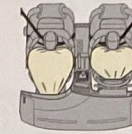
wheeled and moving, the 9000's are well equipped for evasive action. Saab's high-torque engines help you outrun trouble, and the precise steering combined with the sharp response of the chassis and suspension, help you outmaneuver it.

So with Saab, active safety systems improve both your response time and that of the car. When it comes to helping you avoid an accident, we can think of no response more appropriate.



Saab's ABS helps prevent skids on even the most slippery roads.

Even when you've done everything to avoid an accident, one can still happen. That's why Saabs are equipped with both driver- and passenger-side air bags.



Saab safety belts can't help you stay out of an accident. But to hold you in place should one occur, automatic front safety-belt tensioners remove any slack in the belts at the moment of impact.



Engineering a car that will sacrifice its own body to save yours.

Until accidents stop happening, we can think of no better place to have one

than in a Saab 9000.

In both the front and rear, crumple zones provide a vital buffer in a collision, absorbing the forces of impact as they fold inward.

To further protect

the passenger compartment, Saab engineered its safety cage to be a rigid system of reinforced steel pillars, bulkheads and beams.

Of course, all 9000's are equipped with dual air bags. And air bags are most effective when used as a supplement to an advanced safety-belt system like the one found in a Saab. Front outboard safety-

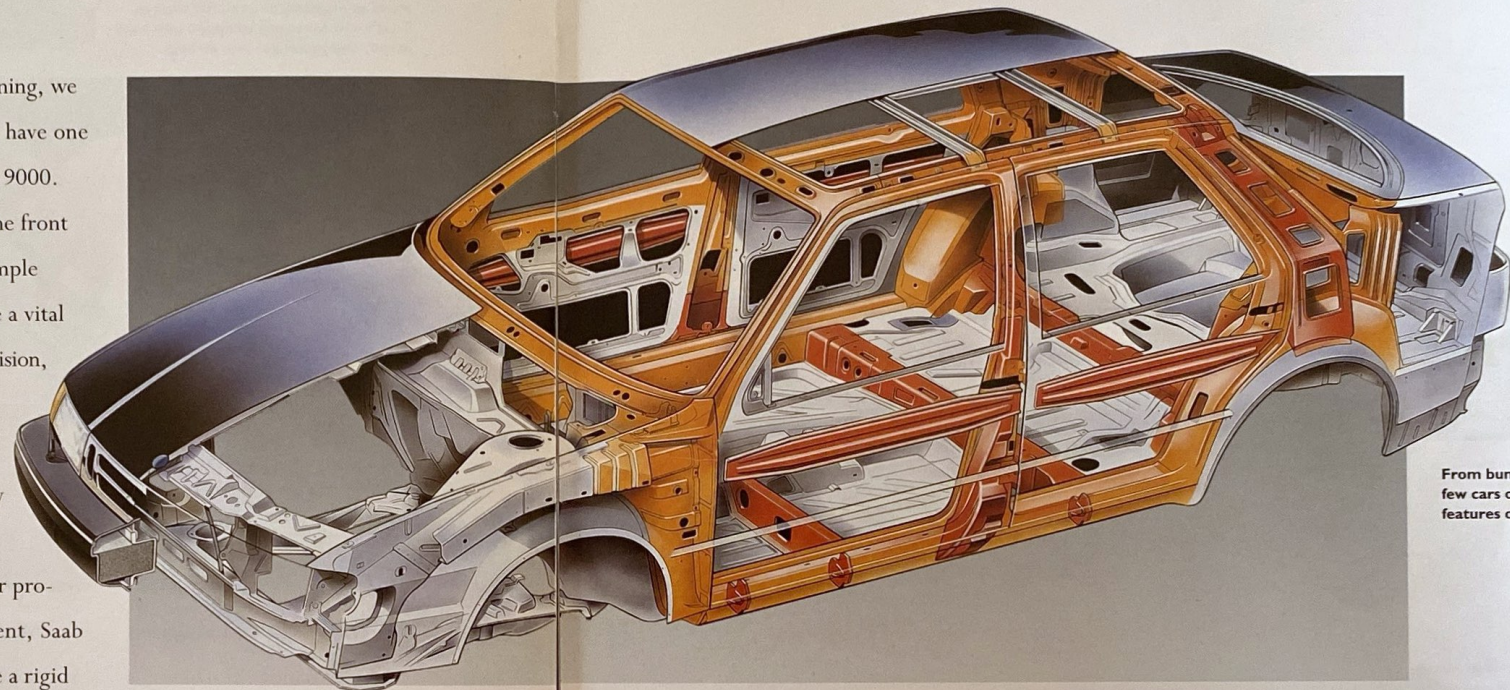
belts, for instance, are firmly anchored to the seats and to the steel pillars that are a strong part of the Saab safety cage.

This arrangement maximizes safety as well as passenger comfort.

And to hold you firmly in place should an accident occur, front safety-belt tensioners



Studies of actual accidents conducted by Sweden's largest insurance company have twice shown the Saab 9000 to be the safest car in Sweden for occupant protection.



From bumper to bumper, few cars offer the safety features of Saab.

automatically reel in belt slack at the moment of impact.

All of this explains why, year after year, independent studies of injury claims have ranked Saabs among the safest cars in the world.



Saabs are a great way of conveyance and convenience.

Saab engineers have delivered practical features to Saab owners for the 45 years they've been building Saabs.

1994 is no exception to that commitment. In fact, it greatly builds on it. The Saab 9000 CS and CSE, for instance, offer a rear-seat feature that proves its practicality

in not one, or two, but three separate ways. Combining a 60/40 rear-seat split with the added advantage of folding the entire seat down, the Saab 9000 CS and CSE are the perfect vehicles for carrying passengers with cargo, or just cargo alone. In the 9000 CDE, the versatility of Saab



The door mirrors, electrically adjustable and heated, are a model of flexibility.



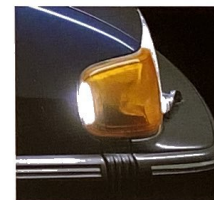
With the rear seat folded, the cargo space in the 9000 CS expands to 56.4 cubic feet.

continues to show itself in unexpected places, with a pass-through hatch hidden behind the foldable rear center armrest. Longer items, like rugs, feel as at home here as they do on the living room floor.

All 9000's offer a bumper-low sill for easy loading. Because what good would all this space be if you couldn't get into it.



Of course, power windows with "one touch" opening for the front windows, rear door power window lock out and central locking are standard on all Saab 9000's.



When backing up, you'll find Saab's side-guidance reversing lights very illuminating.



Extensive warranties and services are delivered with every new Saab.

LONG-TERM

WARRANTY PROTECTION

The strength and durability of Saabs are reflected in the 6-year/80,000-mile* limited warranty that accompanies all 1994 models. This warranty includes bumper-to-bumper coverage for 3 years or 40,000 miles*, excluding certain wear items. Tires, of course, are warranted separately by their manufacturer.

Major systems – the engine, transmission, electronic control units and safety components – are covered for 6 years or 80,000 miles*.

ROADSIDE ASSISTANCE

Along with the Saab warranty, every owner of a 1994 Saab is covered by Saab Roadside Assistance for 3 years or 40,000 miles*. This service provides around-the-clock emergency assistance anywhere in the United States. Just dial the toll-free number and help is on the way.

DEDICATED DELIVERY

The Saab Dedicated Delivery System* assures that you and your Saab get off to a good start. Once your new car is thoroughly cleaned, prepared and inspected, your dealer will ask you to set aside an hour for a guided tour.

It's time well spent, as Saab's exclusive features, warranties and maintenance schedules are explained in full detail. Your first scheduled maintenance is at 5,000 miles and is free of charge.

EUROPEAN DELIVERY

If you're planning a European vacation, picking up your new Saab on the other side of the Atlantic could be the perfect way to go. It's simple to arrange through your dealer and the savings can be substantial when you consider the cost of an expensive European car rental.

And when you're ready to return home, you can drop off your Saab at one



of 28 return shipment locations throughout Europe. Your car will be shipped home and Saab will pay for U.S. Customs duty, marine transportation, terminal charges and up to five days of port storage.

The Saab 9000's. The reasons to buy one go well beyond the car.



* Whichever comes first. See your Saab dealer for details.

Technical specifications Saab 9000, 1994.

Engine

Transversely mounted, 2.3-liter, four-cylinder, in-line engine. Cast iron engine block and light-alloy cylinder head of cross-flow type. Dual counter-rotating balance shafts equipped with eccentrically mounted balance weights. Dome-shaped combustion chambers with centrally placed spark plugs. Double overhead, chain-driven camshafts. Self-adjusting hydraulic (maintenance-free) valve lifters. Four valves per cylinder.

Engine management and emission control

Saab Trionic system, which monitors and controls fuel injection, ignition (Saab DI) and turbo boost pressure (turbocharged engines). Three-way catalytic converter and oxygen sensor.

Turbocharging

(Turbocharged engines only)
Turbocharger with water-cooled bearing housing. Integrated waste gate (boost pressure control valve). Saab intercooler.

Cooling system

Electric motor-driven, thermostatically controlled radiator fan. Engine oil cooler on the turbocharged engines.

Fuel tank capacity

17.4 gallons (66 liters).

Electrical system

Alternator: 1540 W, 115 A.
Battery: 12 V, 60 Ah (maintenance free).

Transmission

Front-wheel drive with fully synchronized, five-speed manual gearbox, or four-speed automatic transmission,

with split torque in 3rd and direct mechanical in top gear. Compact, transversely mounted gearbox integrated with the engine and differential.

Steering

Power-assisted rack-and-pinion steering. Impact-collapsible steering column.

Turning circle: 35.4 ft. curb to curb (10.9 m curb to curb).

Brakes

Anti-lock braking system (ABS). Power-assisted disc brakes all-around, ventilated in front. Self-adjusting, single piston system with floating brake caliper. Asbestos-free pads. Mechanical action of hand brake on rear wheel discs.

Suspension

Front: MacPherson struts, chassis stabilizer bar, twin-pipe gas shock absorbers of low-pressure type and integrated wheel bearings.

Rear: Lightweight beam-type axle with coil springs, gas shock absorbers, stabilizer bar, two trailing and two leading arms and Panhard rod.

Luggage compartment

CS models: Completely folding back seat or 40% or 60% foldable.

Removable parcel shelf.

Length with back seat in position, 39.7 in. (1,010 mm). Length with back seat folded down, 65.4 in. (1,660 mm). Capacity: EPA Cargo

Volume Index with the back seat raised, 23.5 cu.ft. (660 liters). Total Cargo Space with the back seat folded down, 56.4 cu.ft. (1,597 liters).

CDE model: Length 43.7 in. (1,110 mm). Capacity: EPA Luggage Capa-

city 17.8 cu.ft. (503 liters). Long articles can be placed through a pass-through hatch behind the rear center armrest.

Weights*

Weight distribution: 60% front, 40% rear.

Maximum permissible trailer weight: Trailer with brakes 2,000 lbs. (900 kg); trailer without brakes 1,000 lbs. (450 kg).

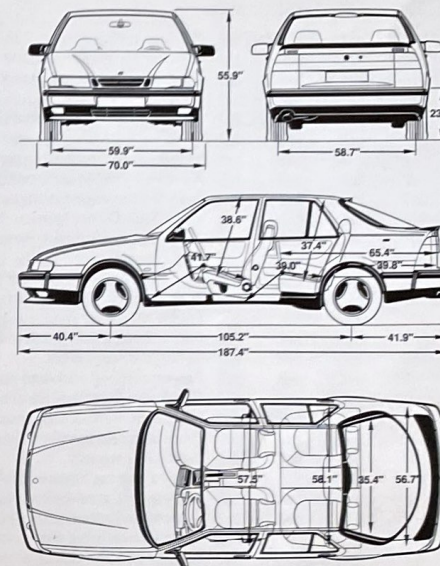
Maximum permissible load on the roof: 220 lbs. (100 kg).

Curb weight: 3,050–3,290 lbs. (1,386–1,495 kg).

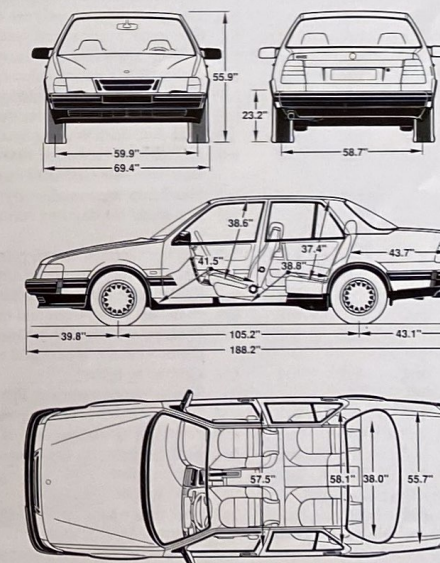
Gross vehicle weight rating (GVWR): 3,975–4,260 lbs. (1,807–1,936 kg).

* Base curb weight with standard equipment.

Saab 9000 CS



Saab 9000 CDE



	TURBOCHARGED ENGINE 2.3-LITER (AERO)	TURBOCHARGED ENGINE 2.3-LITER	NATURALLY ASPIRATED ENGINE 2.3-LITER
Displacement	139.6 cu.in. (2,290 cc)	139.6 cu.in. (2,290 cc)	139.6 cu.in. (2,290 cc)
Bore/stroke	3.54/3.54 in. (90/90 mm)	3.54/3.54 in. (90/90 mm)	3.54/3.54 in. (90/90 mm)
Horsepower rating	225 hp at 5,500 rpm; 200 hp at 5,000 rpm with automatic transmission	200 hp at 5,500 rpm	146 hp at 5,600 rpm
Peak torque	252 ft.lb. at 1,800 rpm; 217 ft.lb. at 1,800 rpm with automatic transmission	238 ft.lb. at 1,800 rpm; 217 ft.lb. at 1,800 rpm with automatic transmission	151 ft.lb. at 3,800 rpm
Max. boost pressure	1.08 bar; 0.81 bar with automatic transmission	1.00 bar; 0.81 bar with automatic transmission	
Compression ratio	9.2:1	9.2:1	10.5:1
Recommended octane rating, unleaded only	Min. 91 AON	Min. 87 AON	Min. 87 AON

Equipment Saab 9000, 1994

		9000 CDE	9000 Aero	9000 CSE	9000 CS
ENGINES	2.3-liter turbocharged, 225 hp		Std*		
	2.3-liter turbocharged, 200 hp	Std	Opt	Opt	Opt
	2.3-liter naturally aspirated, 146 hp			Std	Std
PERFORMANCE	Double overhead camshaft 2.3-liter engine	Std	Std	Std	Std
	16-valve, light-alloy cylinder head	Std	Std	Std	Std
	Water-cooled turbocharger	Std	Std	Opt	Opt
	Air-to-air charge-air intercooler	Std	Std	Opt	Opt
	Saab Trionic engine management system:	Std	Std	Std	Std
	Saab Direct Ignition (Saab DI)	Std	Std	Std	Std
	Electronic fuel injection	Std	Std	Std	Std
	Knock detection	Std	Std	Std	Std
	Charge-pressure control	Std	Std	Opt	Opt
	Saab Traction Control System (TCS)		Opt		
	Engine oil cooler	Std	Std	Opt	Opt
	Four-wheel, power-assisted disc brakes with ABS	Std	Std	Std	Std
	Ventilated front discs	Std	Std	Std	Std
	Power-assisted rack-and-pinion steering	Std	Std	Std	Std
	Gas-hydraulic shock absorbers	Std	Std	Std	Std
	Independent front suspension with MacPherson struts	Std	Std	Std	Std
	Front and rear stabilizer bars	Std	Std	Std	Std
	Light-alloy wheels	Std	Std	Std	Std
	Low rolling-resistance steel-belted radial tires	Std	Std	Std	Std
	High-speed, steel-belted radial tires	Std	Std	Opt	Opt
	5-speed/overdrive manual transmission	Opt	Std	Std	Std
	4-speed/overdrive automatic transmission with split torque and direct drive				
		Std	Opt	Opt	Opt
SAFETY	Saab Supplemental Restraint System (SRS)	Std	Std	Std	Std
	Driver's-side air bag	Std	Std	Std	Std
	Passenger's-side air bag	Std	Std	Std	Std
	Belt tensioner system for front seat occupants	Std	Std	Std	Std
	Padded knee bolsters for front seat occupants	Std	Std	Std	Std
	3-point safety belts at all outboard seating positions	Std	Std	Std	Std
	Rear center lap belt	Std	Std	Std	Std
	Welded unit-body construction	Std	Std	Std	Std
	Designed in front and rear crumple zones	Std	Std	Std	Std
	Side impact protection system	Std	Std	Std	Std
	Well-isolated fuel tank location	Std	Std	Std	Std
	Collapsible steering column	Std	Std	Std	Std
	Manually activated "childproof" rear door locks	Std	Std	Std	Std
	Lock-out switch for rear door power window switches	Std	Std	Std	Std
	Saab Anti-lock Braking System (ABS)	Std	Std	Std	Std
	Mechanically activated rear-wheel hand brake	Std	Std	Std	Std
	Rear window wiper and washer system		Std	Std	Std
	Headlamp wiper and washer system	Std	Std	Std	Std
	Pre-wired for daytime running lights	Std	Std	Std	Std
EXTERIOR	Electric tilt/slide tinted-glass sunroof with interior sunshade	Std	Std	Std	Std
	Aerodynamic headlamps with flush lenses	Std	Std	Std	Std
	Replaceable halogen headlamp bulbs	Std	Std	Std	Std
	"Self-restoring" front and rear bumpers	Std	Std	Std	Std
	Protective body side moldings	Std	Std	Std	Std
	Color-keyed bumpers and black window trim		Std	Std	Std
	Cornering lights	Std			
	Side guidance reversing lights	Std	Std	Std	Std
	Side-mounted direction indicator lights	Std	Std	Std	Std
	Front fog lights	Std	Std	Std	Std
	Rear fog light		Std	Std	Std
	Front spoiler	Std	Std	Std	Std
	Rear spoiler		Std	Opt	Opt
	Rear decor panel	Std			
	Neutral-density, dark-tinted taillight lenses	Std	Std	Std	Std
	Undercoating and anti-corrosion treatment	Std	Std	Std	Std

* Manual transmission only.

** Includes weather band.

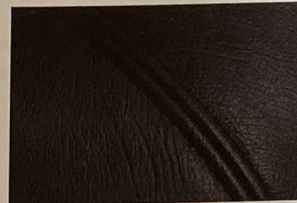
© Dolby and the double D symbol are registered trademarks of Dolby Laboratories Licensing Corporation.

		9000 CDE	9000 Aero	9000 CSE	9000 CS
COMFORT AND CONVENIENCE	Interior air-filtration system	Std	Std	Std	Std
	Air-conditioning (CFC free)	Std	Std	Std	Std
	Automatic Climate Control with manual overrides	Std	Std	Std	Std
	Electrically heated, reclining front bucket seats	Std	Std	Std	Std
	Temperature controls for both seat heaters	Std	Std	Std	Std
	Power, 8-way adjustable driver's seat with memory	Std	Std	Std	
	Power, 8-way adjustable front passenger seat	Std	Std	Std	
	Electronic speed control with "Cruise On" indicator light	Std	Std	Std	Std
	Central locking system with integral anti-theft alarm	Std	Std	Std	Std
	Lockable center storage console	Std	Std	Std	Std
	Power windows with "one touch" opening for front windows	Std	Std	Std	Std
	Electrically adjustable and heated sideview mirrors	Std	Std	Std	Std
	Electric rear window demister	Std	Std	Std	Std
	Rear side window demisters	Std	Std	Std	Std
	Windshield wiper/washer system with interval wipe feature	Std	Std	Std	Std
	Illuminated vanity mirrors in sun visors	Std	Std	Std	Std
	Interior courtesy light delay feature	Std	Std	Std	Std
	Overhead console with swiveling map light	Std	Std	Std	Std
	Dual rear seat reading lamps	Std	Std	Std	Std
	Adjustable front safety belt guide loops	Std	Std	Std	Std
	Head restraints at front and rear outboard seating positions	Std	Std	Std	Std
	Three-position fold-down back seat		Std	Std	Std
	Pique fabric upholstery				Std
	Leather seating surfaces	Std	Std	Std	
	Leather-wrapped steering wheel and shift boot cover*	Std	Std	Std	
	Walnut instrument panel	Std			
	Front and rear plush carpet floor mats	Std	Std	Std	Std
	Fold-down rear center armrest	Std	Std	Std	Std
	Remote trunk/hatch release button on driver's door	Std	Std	Std	Std
	Pass-through opening from trunk to rear seat	Std			
	Luggage compartment light	Std	Std	Std	Std
	Built-in/removable tool kit	Std	Std	Std	Std
	Tinted/heat-absorbent glass all-around	Std	Std	Std	Std
AUDIO SYSTEM	Removable AM/FM stereo/cassette	Std	Std	Std	Std
	Anti-theft lock-out code and warning light	Std	Std	Std	Std
	150-watt amplifier	Std	Std	Std	Std
	Front/rear fader control	Std	Std	Std	Std
	Electronic tuning, with 18 programmable AM/FM pre-sets	Std**	Std**	Std**	Std
	Seek and scan, up and down tuning	Std	Std	Std	Std
	Auto-reverse cassette with Dolby® noise reduction	Std	Std	Std	Std
	Full-logic cassette transport with key-off eject	Std	Std	Std	Std
	Eight acoustically engineered speakers	Std	Std	Std	Std
	Automatic electric antenna	Std	Std	Std	Std
	Removable Saab/Clarion compact disc player/7-band graphic equalizer/spectrum analyzer with CD changer controls	Std	Std	Std	
	Pre-wired for CD changer	Std	Std	Std	
INSTRUMENTATION	Analog speedometer with odometer and trip meter	Std	Std	Std	Std
	Analog tachometer	Std	Std	Std	Std
	Fuel and temperature gauges	Std	Std	Std	Std
	Turbo boost pressure gauge	Std	Std	Opt	Opt
	Saab Car Computer (includes digital clock)	Std	Std	Std	
	Quartz analog clock				Std
	Electronic display unit	Std	Std	Std	Std
	Shows voltage, outside temp., avg./inst. fuel econ., miles-to-empty	Std	Std	Std	Std
	Message prompts to check coolant and oil levels	Std	Std	Std	Std
	Pictogram for bulb failure, door or trunk open, low oil pressure	Std	Std	Std	Std
	"Shift-up" indicator (manual transmission)	Std	Std	Std	Std
	Warning lights for:				
	Supplemental Restraint System (SRS)	Std	Std	Std	Std
	Anti-lock Braking System (ABS)	Std	Std	Std	Std
	Low fuel, battery, brake fluid and washer fluid	Std	Std	Std	Std
	Indicator lamps for rear demister, hand brake and high beam	Std	Std	Std	Std

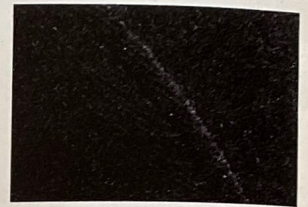
Interior and exterior colors.

Interior colors

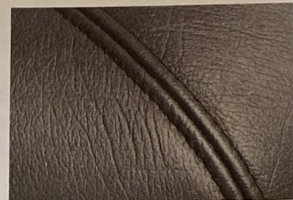
Leather



Velour



Charcoal



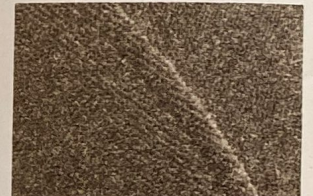
Charcoal



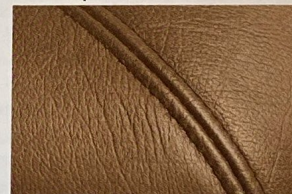
Light Grey



Light Grey

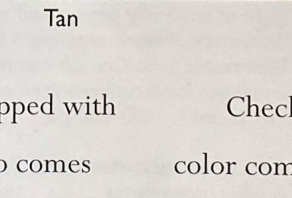


Taupe



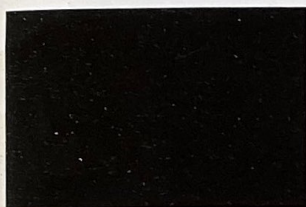
Taupe

Tan

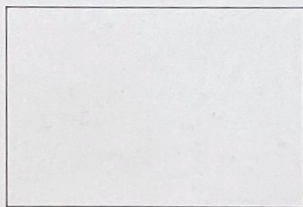


The 9000 CS comes equipped with velour seating. The 9000 Aero comes equipped with full leather seats. The 9000 CSE and CDE come equipped with leather seating surfaces.

Check with your Saab dealer on color combinations and availability in your area.



Black



Cirrus White



Imola Red*

Solid colors



Citrin Beige

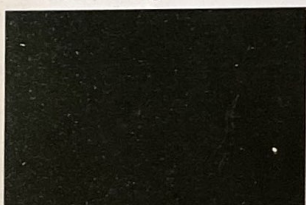


Platana Grey**



Ruby Red

Metallic colors



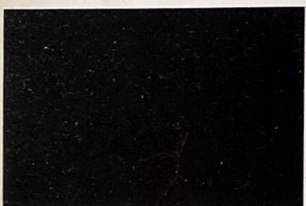
Scarabe Green



Eucalyptus Green*



Aubergine**



Le Mans Blue

* Available on 9000 Aero only.

** Not available in the U.S.



An important note regarding this brochure: We hope you find this brochure informative; we have tried to make it as accurate as possible. However, some of the information presented may have been changed or updated since this brochure was printed; photographs and illustrations may not portray the exact colors of actual paint or materials; and some equipment shown may not be available in the U.S. or is available at extra cost. We reserve the right to make changes in prices, colors, materials, equipment, specifications and models, including the discontinuation of models, at any time and without notice. For the most complete and up-to-date information, please check with your authorized Saab dealer. The Saab tradename and trademark and the Saab-Scania logo are registered trademarks of Saab Automobile AB used under license. 9000 and 9000 CD are registered trademarks of Saab Automobile AB. A trademark application is pending for 9000 CS.

Individual strength through combined technology

Saab Automobile AB was formed on January 1, 1990, when Saab-Scania AB entered into a 50/50 joint-venture with General Motors (Europe) AG. The alliance called for far-reaching technical cooperation between Saab Automobile AB and GM's Technical Development Centers.

One example of such synergy is the V6 engine-which supplements Saab's popular four-cylinder engine family-available in the all-new Saab 900. Saab's special expertise in four-valve technology, testing procedures and emission control systems played an important role in the development of this engine. Produced by GM Europe, this engine benefits from GM's sophisticated production capabilities. Such shared technologies and cooperative engineering endeavors allow Saab to better serve the needs of its customers.

Saab Cars USA, Inc.
4405-A Saab Drive
P.O. Box 9000
Norcross, GA 30091



SAAB

Saab Automobile AB
Trollhättan, Sweden

US Art. No. 261156 Printed in Sweden on chlorine-free paper. U.S. PN 02 16 838 © Copyright, Saab Automobile AB, 1993.

