

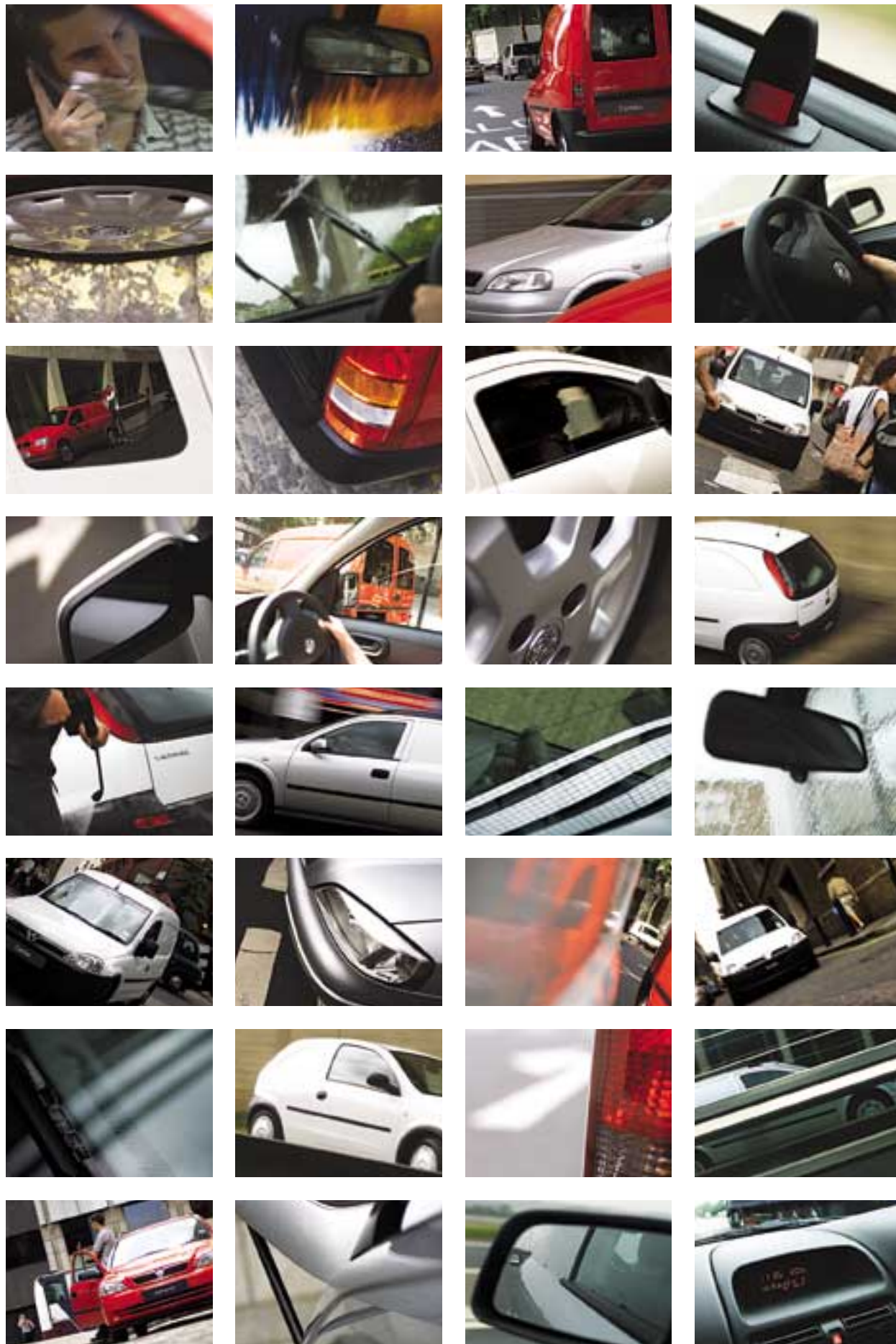


all in a
day's work...



Corsavan
Astravan
Combo





Delivering a top quality job is the key to success in any business and Vauxhall vans are designed to help you achieve that objective.

Our range of light, medium and heavy vans gives you the support and assurance you need to provide the high levels of service your customers demand. They reflect the pride you take in seeing a job well done.

And they're backed by a nationwide network of dealers to ensure delivering a good, professional job has never been easier.

It's this understanding of our customers' needs that has resulted in Vauxhall being recently awarded 'Best Van Range' in the 2002 *Commercial Fleet World* Honours.

Vauxhall's light van range of Corsavan, Astravan and Combo offer superb reliability and outstanding load-carrying capacity combined with the lowest possible running costs. They are the cost effective choice for your business.

Why not visit your local dealer and try them for yourself.

all in a day's work...



corsavan
page 4



astravan
page 16



combo
page 30

specification and technical data pages S.1 – S.20 | colours and trims page 44 | customer care page 46

Corsavan – small enough to tackle congested city streets, but with the flexibility to eat up the miles on the open road – it’s the smart choice for businesses on the move. Small it may be, but Corsavan offers a

generous level of standard equipment, space, comfort, security and safety in equal measure. And it’s certainly no lightweight when it comes to hard work, with a load capacity that will surprise you.



Max. volume
1.06m³



Max. load floor
length 1.24m



Max. payload
495kg



1E insurance
group



20,000 mile
service interval



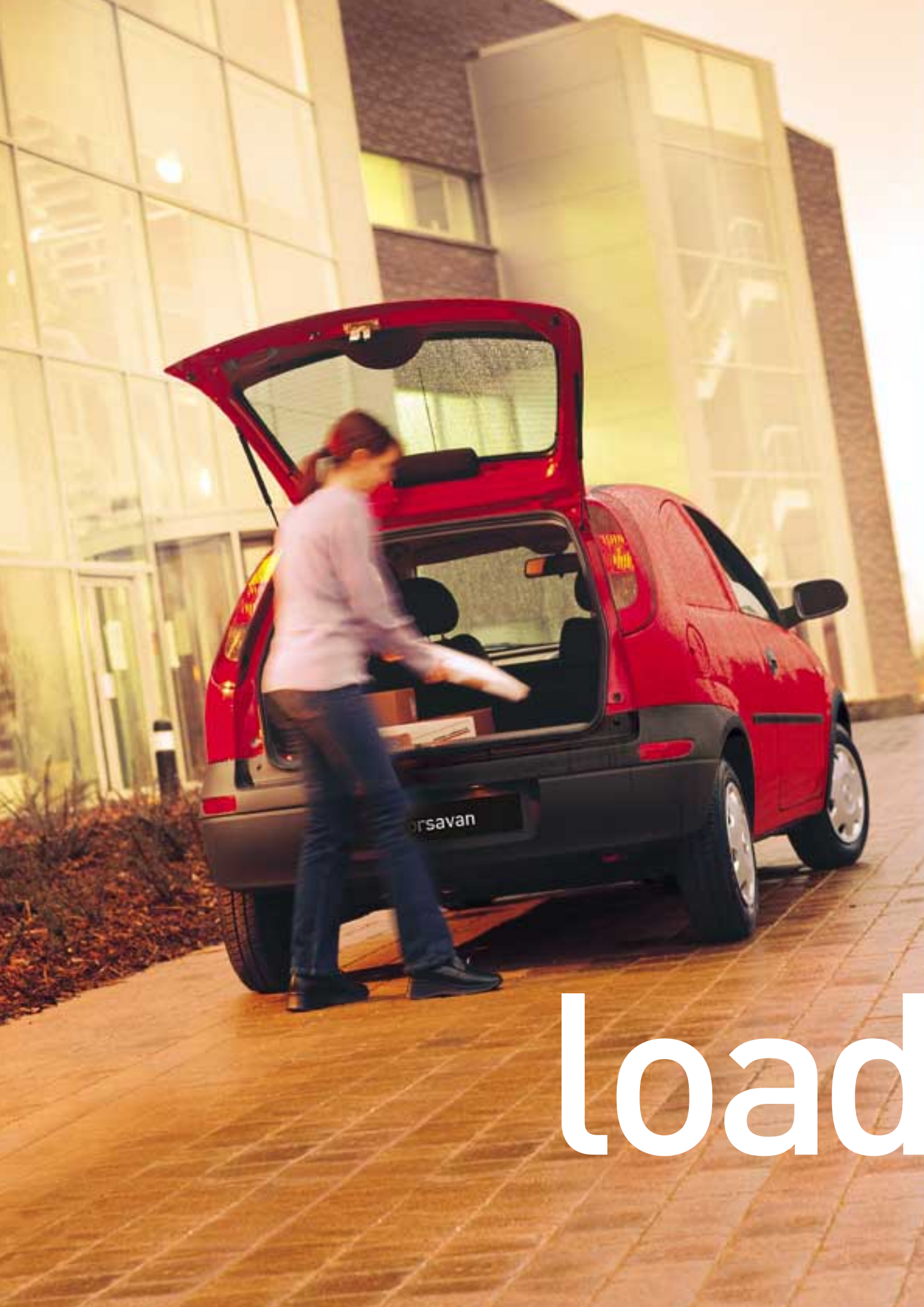
3-year/60,000 mile
warranty

corsavan

the small van that gives you more



COMMERCIAL MOTOR MAGAZINE said... *“Vauxhall has added yet another excellent vehicle to its line-up and shown that it takes the hatchback van market very seriously indeed.”*
Commercial Motor, August 2001



Corsavan's high-lift tailgate opens to reveal a practical 1.06 cubic metre loadspace with a total carrying capacity of up to 495kg. A sturdy, half-height steel bulkhead and sidewall half-height panelling help to protect against shifting loads and, if extra protection is required, a rubber floor mat (shown left) and an upper load restraint mesh (shown below) are available as options.



Loadspace dimensions

	mm	inches
Max. tailgate aperture height	627	24.7
Max. tailgate aperture width	1004	39.5
Maximum load area height	857	33.7
Maximum load area width	1277	50.3

Loadspace volume

VDA method	cu.m.	cu.ft.
Maximum loadspace volume	1.06	37.4

Loadspace



**Max. payload
495kg**

When it comes to low running costs, very few vans can match Corsavan's class-leading group 1E insurance rating – with one-year/20,000 mile service intervals and a three-year/60,000 mile warranty. Even fewer can match Corsavan's reputation for

low fuel consumption from its three highly economical engines – an emissions-conscious 1.2 litre ECOTEC petrol engine and a choice of two advanced 1.7 litre turbo diesels – making Corsavan a hugely effective and efficient working tool.



20,000 mile service interval



3-year/60,000 mile warranty

> the facts

- 1.2i 16v ECOTEC-4 (75PS/110Nm) petrol engine > 1.7Di 16v (65PS/130Nm) turbo diesel engine
- > 1.7DTi 16v (75PS/165Nm) intercooled turbo diesel engine > Five-speed manual gearbox
- > Electric speed-sensitive power-assisted steering > One-year/20,000 mile service intervals
- > One-year unlimited mileage manufacturer's warranty > Second and third year no-fee customer option warranty up to 60,000 miles > Group 1E insurance rating

efficient

COMMERCIAL
MOTOR MAGAZINE
said...

"We were stunned by its fuel economy: over 58mpg with a full load on board. That's around 20% better than the competition. Vauxhall seems determined to reduce your running costs to zero with this one."

Commercial Motor, August 2001 (Test model 1.7DTi 16v carrying a 420kg load)





Corsavan's spacious interior has been designed for maximum comfort and a high level of efficiency, with every switch and control within easy reach. You'll also find in-cab storage for paperwork, drinks and all those other essentials for a busy

working day out on the road. But, a busy day doesn't have to mean a stressful day; electric speed-sensitive power-assisted steering as standard ensures that Corsavan is a pleasure to drive, and manoeuvring and parking are a total breeze, too.



Power-assisted steering



Air-conditioning (optional)

relaxed

Vehicle features optional CDR 2005 stereo radio/CD player, with multi-function display panel, steering wheel mounted audio controls and air-conditioning.

WHAT VAN? *"You get a surprising amount of legroom for such a small van and we had no problems with head or shoulder room either."*
MAGAZINE *said...* What Van? November 2001

> the facts

- Stereo radio/cassette player > Cabin pollen filter and odour-reducing activated charcoal filter > Lidded glovebox > Drinks holder
- > Door pockets > Cigar lighter/accessory socket > Digital clock and outside temperature display > Electric speed-sensitive power-assisted steering > Orleans cloth seat trim > Air-conditioning (optional) > Stereo radio/compact disc player (optional)



Corsavan's class-leading insurance rating illustrates not only its low repair costs but also Vauxhall's serious commitment to the important issues of safety and security. Packed inside Corsavan's strong and rigid bodyshell you'll find a whole host of standard

safety features, including side-impact protection beams and a driver's airbag. Choose the optional Safety pack (see page 14) and you'll also benefit from an Anti-lock Braking System (ABS) and a passenger's airbag. And the security measures are

equally determined to ensure your Corsavan remains in safe hands – with an electronic engine deadlock immobiliser and remote control central deadlocking – both featured as standard. A remote control ultrasonic security alarm is also available as an option.

secure



> the facts

- Driver's airbag > Pyrotechnic body-lock seatbelt pretensioners > Pedal release system – helps prevent driver's legs and feet impacting with pedals in severe frontal impacts > Side-impact protection beams > High-level LED centre brake light > Half-height steel bulkhead
- > Load restraint lashing eyes > Electronic engine deadlock immobiliser > Remote control central deadlocking (doors, tailgate and fuel flap) > Remote control ultrasonic security alarm system (optional) > ABS (optional)



For enhanced versatility and security, a base carrier system, ladder rack and rear window grille are available as accessories.

As well as specifying individual options you can also equip Corsavan with four extra-cost option packs, each of which combine a number of options to provide increased value-for-money. The Function pack boosts comfort and versatility; the Electric pack provides extra convenience; the Safety pack increases both active and passive safety; while the Exterior pack enhances style.



Vehicle features optional Exterior pack and Electric pack.

option packs

> the facts

Electric pack

- > Electrically adjustable/heated door mirrors [1]
- > Body-colour door mirrors
- > Electrically operated windows

Safety pack

- > Anti-lock Braking System (ABS)
- > Passenger's airbag [2]

Exterior pack

- > 14-inch alloy wheels (steel spare) with lockable centre caps and 175/65 R 14 tyres
- > Front fog lights
- > Body-colour bumpers

Function pack

- > Driver's sunglasses holder [3]
- > Tilttable steering column [4]
- > Passenger's underseat storage tray
- > Map reading lights



accessories

Although Corsavan is a highly practical vehicle, Vauxhall accessories can help you to make the most of that potential by tailoring your van to meet your own requirements. A selection is listed here. For details

of the complete range of van accessories please ask your Vauxhall van dealer for a copy of the Vauxhall Van Range Accessories brochure. Or visit the Vauxhall website at www.vauxhall.co.uk/accessories

Safety

- > First-aid kit
- > Fire extinguisher
- > Warning triangle
- > Spare bulb kit

Security

- > Double Security Alarm (DSA) system
- > Locking wheel bolts - set of 4
- > Steering wheel security clamp

Interior - Cabin Area

- > Floor mats
- > Centre armrest

Interior - Load Area

- > Anti-slip mat
- > Cargo liner
- > Load-restraining floor net
- > Rear window grille

Exterior

- > Headlight protectors
- > Mudflaps
- > Door wind deflector

Load Carriers

- > Base carrier
- > Ladder rack
- > Load stop kit
- > Load carrier
- > Load-restraining strap

Towing

- > Detachable tow bar with 12N or 12N/12S electrics
- > Universal towing mirror

Audio and Communications

- > Stereo radio/cassette players
- > Stereo radio/CD players
- > Speakers
- > Audio storage
- > Satellite navigation systems

Styling by Irmscher

- > Interior styling
- > Exterior styling
- > Alloy wheels
- > Wheel accessories

Vehicle features: Gamma alloy wheels, rear spoiler, sports silencer with split oval design chrome-plated tailpipes, front and rear mudflaps, tow bar with 12N electrics, base carrier system with load stop kit and rear window grille all available as accessories. Vehicle also features optional Exterior pack and Electric pack.



Astravan is clear proof of Vauxhall's commitment to the very best in light commercial vehicle design. Great looking and great to drive, Astravan makes a positive statement about your business. But there's a great deal of substance behind those good

looks; Astravan is solid and dependable, with the load potential to handle just about any job you ask of it. And with a choice of three models – Envoy, LS or the high-performance styled Sportive – it's easy to see why Astravan makes business such a pleasure.



Max. volume
1.60m³



Max. load floor
length 1.70m



Max. payload
610kg



LPG Dualfuel
model



20,000 mile
service interval



3-year/60,000 mile
warranty

astravan

making business a pleasure





Astravan's cleverly designed load compartment provides 1.60 cubic metres of usable loadspace and up to 610kg of total carrying capacity. A standard half-height steel bulkhead, half-height sidewall panelling and load lashing eyes provide valuable protection against shifting loads.

Loadspace dimensions

	mm	inches
Max. tailgate aperture height	788	31.0
Max. tailgate aperture width	1112	43.8
Maximum load area height	886	34.9
Maximum load area width	1374	54.1
Width between wheel arches	1120	44.1
Maximum load floor length	1701	67.0
Loading height (unladen)	594	23.4

Loadspace volume*

VDA method	cu.m.	cu.ft.
Maximum loadspace volume	1.60	56.5

*Loadspace for Dualfuel models will vary if the spare wheel is carried in the load area.

Vehicle features upper load restraint mesh (standard on LS and Dualfuel models, optional on Envoy).

> the facts

- 1.60 cu.m. loadspace volume > Up to 610kg total carrying capacity > Low loading height (594 mm)
- > Half-height steel bulkhead > Sidewall half-height protection panelling > Illuminated load area
- > Load restraint lashing eyes > Upper load restraint mesh (standard on Dualfuel/LS – optional on Envoy) > Manually operated rear suspension levelling (optional on Envoy/LS) – for heavier loads

Loadspace  ce
Max. payload 610kg

Astravan works as hard for your bank balance as it does for your business. Power-assisted steering, extended service intervals and maximum use of low-maintenance and lightweight components, all add up to low running costs. And when it comes to power, Astravan comes with a choice of three extremely economical engines – a 1.6i petrol unit (also available as

a low emissions LPG Dualfuel variant) and two 16-valve turbo diesels – a 1.7DTi and a new 2.0DTi unit. Providing over 20% more power than the engine it replaces, this remarkably efficient 2.0DTi engine produces 100PS and, like the 1.7DTi (75PS), incorporates efficiency-enhancing direct injection and an advanced engine management system.



3-yr
3-year/60,000 mile
warranty



**LPG Dualfuel
model**

> the facts

1.6i (85PS/138Nm) petrol engine (LPG Dualfuel model available) > 1.7DTi 16v (75PS/165Nm) turbo diesel engine > 2.0DTi 16v ECOTEC-4 (100PS/230Nm) turbo diesel engine > Electro-hydraulic power-assisted steering – more economical than conventional systems > Low-rolling resistance tyres – for improved mpg > One-year/20,000 mile service intervals > One-year unlimited mileage manufacturer's warranty > Second and third year no-fee customer option warranty up to 60,000 miles

efficient

WHAT VAN? *"The Astravan is a premium van and the terrific*
MAGAZINE *16v 1.7DTi will be the mainstay."*
said... *What Van? February 2002*



Astravan provides an effective working environment with reassuring safety features and award-winning security – having received the *What Van?* magazine Gold Medal for 'Best Security' for two years running. The spacious interior provides generous head

and legroom, excellent all-round visibility and clear, uncluttered instrumentation. While a whole range of practical storage features – such as door pockets, drinks holders and a dual-level lidded glovebox – mean high levels of convenience out on the road.



Power-assisted steering



Driver's airbag

relaxed

> the facts

- Stereo radio/cassette player > Driver's airbag > Seatbelt pretensioners > Side-impact protection beams > Remote control central deadlocking > Electronic engine deadlock immobiliser
- > Cabin pollen filter > Door pockets > Drinks holders > Namur cloth seat trim (Envoy/LS)
- > Vinyl seat trim (optional on Envoy) > Sports seats with Texas cloth trim (standard on Sportive, optional on Envoy/LS) > ABS (standard on 2.0i DTi, optional on 1.6i and 1.7DTi models)



LS model features Namur cloth seat trim and optional automatic transmission.



Astravan's wide model choice allows you to match specification to real operating needs. The entry model Envoy offers a generous list of standard features at a highly competitive price, while LS builds on this with further comfort, style, safety and load-carrying features. Whichever you choose, you can have the same tough, three-engine

choice (1.6i petrol, 1.7DTi or 2.0DTi 16-valve turbo diesel), with the added option of LPG Dualfuel operation on the 1.6i engine and automatic transmission on 1.6i and 2.0DTi models.



envoy & ls

Envoy > the facts

CAR 200 stereo radio/cassette player with Traffic Programme > Rev counter > Multi-function display panel > Fold-forward passenger's seat back > Twin internally adjustable door mirrors with two-way folding facility > Body-colour front bumper > Body side-protection mouldings > Electric headlight beam levelling > High-level LED centre brake light > Wheel centre covers

LS > the facts > as Envoy plus:

CAR 300 RDS EON stereo radio/cassette player with Traffic Programme > Steering column adjustable for reach and rake > Automatic self-correcting RDS-time clock > Driver's seat height adjuster > Upper load restraint mesh > Roof rails > Flush wheel covers

If it's style you want, Astravan Sportive is the van for you. With 15-inch alloy wheels, front fog lights, roof rails and body-colour door mirrors, Sportive really looks the business, while inside you'll find air-conditioning, electrically operated windows,

sports seats and a stereo radio/CD player. And with a choice of two smoothly powerful 1.7 and 2.0 litre 16-valve turbo diesel engines, Sportive also performs and handles every bit as brilliantly as it looks – without ever losing its appetite for hard work.



Air-conditioning



Alloy wheels

sportive



- Sportive > **the facts** as LS plus:*
- CDR 500 RDS EON stereo radio/CD player with Traffic Programme
 - > Air-conditioning > Electrically operated windows > Sports seats in Texas cloth trim with lumbar adjustment > 15-inch alloy wheels with low profile tyres > Front fog lights > Body-colour door mirrors
 - > Two-coat metallic or pearlescent paint (no-cost option)
 - > Front lower spoiler and side sills (available as accessories)



*Sportive does not feature an upper load restraint mesh or steering column adjustment.



A selection of four option packs are available for Astravan, combining a number of complementary features to provide added style, comfort, convenience and safety.



Vehicle features optional Styling pack.

option packs

> the facts

Comfort pack (Envoy only)

- > Driver's seat height adjuster (1)
- > Steering column adjustable for reach and rake (2)

Safety pack (Envoy/LS only)

- > Anti-lock Braking System (ABS)
- > Passenger's airbag

Styling pack (Envoy/LS only)

- > 15-inch alloy wheels (steel spare) with locking bolts and 195/60 R 15 low profile tyres
- > Front fog lights
- > Body-colour door mirrors [3]

Winter pack (Envoy/LS only)

- > High-pressure headlight washers
- > Electrically adjustable/heated door mirrors



accessories

You can tailor your Astravan to meet your own business requirements more exactly by making use of Vauxhall's comprehensive range of accessories. For details please ask

your Vauxhall van dealer for a copy of the Vauxhall Van Range Accessories brochure. Or visit the Vauxhall website: www.vauxhall.co.uk/accessories

Safety

- > First-aid kit
- > Fire extinguisher
- > Warning triangle

Security

- > Double Security Alarm (DSA) system
- > Locking wheel bolts – set of 4
- > Steering wheel security clamp

Interior – Cabin Area

- > Floor mats
- > Glovebox organiser

Interior – Load Area

- > Anti-slip mat
- > Cargo liner
- > Load-restraining floor net
- > Rear window grille

Exterior

- > Headlight protectors
- > Mudflaps
- > Rear parking distance sensor
- > Door wind deflector

Load Carriers

- > Base carriers
- > Ladder rack
- > Load stop kit
- > Load carrier
- > Load-restraining strap

Towing

- > Fixed or flanged tow bar with 12N or 12N/12S electrics
- > Universal towing mirror

Audio and Communications

- > Stereo radio/cassette players
- > Stereo radio/CD players
- > Speakers
- > Audio storage
- > Satellite navigation systems

Styling by Irmscher

- > Interior styling
- > Exterior styling
- > Alloy wheels
- > Wheel accessories



Vehicle features: accessory flange tow bar with 12N/12S electrics, rear window grille and bott® sliding floor and sliding perforated panel with tiltable storage boxes and hook kit.

There are some things you have to depend on. That's where Combo comes in: awarded Best Small Van at the 2002 *Commercial Fleet World* Honours, Combo is designed for operators who demand big space in a practical monocab package. Combo offers an outstanding combination of

load capacity, access and payload, with a choice of petrol or diesel engines, and an LPG dualfuel variant. Add a three-year/60,000 mile warranty, 20,000 mile service intervals and it's clear that Combo is one business partner you can always rely on.



Max. volume
3.20m³



Max. load floor
length 1.78m



Max. payload
810kg



LPG Dualfuel
model



1E insurance
group



3-year/60,000 mile
warranty

combo

the perfect business partner



access

Combo is big on load access. With 1107mm between the wheel arches, the load area is wide enough to take a standard Euro pallet. The loading height is a very low 584mm and the roofline-height twin rear doors open out to an angle of 180 degrees for even easier loading. Optional nearside and offside sliding side-access doors are

particularly useful – at 620mm wide by 913mm high, even a washing machine can be loaded problem-free. And if it's extra length you need, the optional FlexCargo fold-flat passenger's seat and hinged, movable bulkhead allows long items – even eight-foot ladders – to be carried safely and securely inside the van.

Vehicle below features optional Trim pack.



> the facts

- Glazed rear doors > Unglazed rear doors (no-cost option) > Nearside sliding side-access door (optional) > Offside and nearside sliding side-access doors (optional) > FlexCargo fold-flat passenger's seat with or without hinged, movable bulkhead (optional) (1) > Long wheelbase (2716mm) > Max. load floor length 1787mm > Low loading height (584mm) > Half-height steel bulkhead and sidewall protection panelling > Load restraint lashing eyes > Upper load restraint mesh (standard on Dualfuel, optional on other models) > Load area rubber floor mat (optional)



TRANSPORT NEWS *"We found the low loading height, coupled to the wide opening rear doors and side-access doors, made life a lot easier."*
 said... *Transport News, May 2002*

Vehicle features unglazed rear doors (no-cost option) plus optional nearside sliding side-access door, load area rubber floor mat and two-coat metallic paint.



Combo is available with a choice of two nominal gross vehicle weights – 1700 and 2000 – offering a range of total carrying capacities from 595kg up to 810kg. All models boast outstanding load floor length and cargo volume – no less than 2.76 cubic metres, or a vast 3.20 cubic metres when the optional FlexCargo fold-flat passenger’s seat and hinged, movable bulkhead is specified.

Vehicle features optional upper load restraint mesh, Trim pack and two-coat metallic paint.

Loadspace dimensions

	mm	inches
Rear door aperture height	1139	44.8
Rear door aperture width	1238	48.7
Maximum load area height	1175	46.3
Maximum load area width	1348	53.1
Width between wheel arches	1107	43.6
Load floor length	1787	70.3

	mm	inches
Maximum load floor length with optional FlexCargo	2700	106.3
Loading height (unladen)	584	23.0
Sliding side-access door aperture height	913	35.9
Sliding side-access door aperture width	620	24.4

Loadspace volume*

SAE method	cu.m.	cu.ft.
Without optional FlexCargo	2.76	97.5
With optional FlexCargo	3.20	113.0

VDA method	cu.m.	cu.ft.
Without optional FlexCargo	2.39	84.4
With optional FlexCargo	2.88	101.7

*Loadspace for dualfuel models will vary if the spare wheel is carried in the load area.

Loadspace



**Max. payload
810kg**



Vauxhall vans are built to provide high levels of power and torque across a very broad rev range, ensuring peak performance – day in day out – whatever the working situation. And Combo is no exception, offering a choice of engines – a 1.6i petrol unit (with an LPG Dualfuel variant available), or

two 1.7 litre, 16-valve, direct-injection, turbo diesels – each backed by a tough five-speed gearbox. What’s more, it achieves this more efficiently than any other light van available, being recognised as having the lowest overall running costs in the UK by CAP Monitor (February 2002).



3-year/60,000 mile warranty



LPG Dualfuel model

efficient

> the facts

- 1.6i (87PS/138Nm) petrol engine (1) > 1.6i LPG/petrol Dualfuel model > 1.7Di 16v (65PS/130Nm) turbo diesel engine > 1.7DTi 16v (75PS/165Nm) turbo diesel engine (2) > Five-speed manual gearbox
- > 52-litre fuel tank > One-year unlimited mileage manufacturer’s warranty > Second and third year no-fee customer option warranty up to 60,000 miles > One-year/20,000 mile service intervals
- > Group 1E insurance rating (Dualfuel – group 2E)



TRANSPORT NEWS *“A new Combo 1.7Di will cost just 8.23p per mile over a three-year, 90,000 mile period. That gives Combo a 10% advantage over the average said... 9.19p per mile running cost for its sector.”*

Transport News, May 2002. Figures from CAP Monitor, February 2002.

Combo benefits from an all-in-one monocab design, helping to create a light and airy working area. There's also plenty of head and legroom, and excellent all-round visibility through the deep windscreen. The spacious interior also provides plenty of storage areas to help you keep on top of

your workload. And while standard equipment includes electric power-assisted steering, a tiltable steering column and a stereo radio/cassette player, there's also a wide choice of options – such as air-conditioning, CD player and satellite navigation – so that you can equip your Combo exactly the way you want it.



Power-assisted steering



Air-conditioning (optional)

relaxed



1

> the facts

- Electric power-assisted steering > Tilttable steering column (1)
- > Klimt cloth seat trim > Vinyl seat trim (optional) > Large overhead storage shelf (2) > Additional storage facilities (3)
- > Stereo radio/cassette player > Service-due indicator
- > Extra-large fold-flat door mirrors > Driver's seat height adjuster (optional) (4) > Satellite navigation system (optional)



2



3



4



Vehicle features optional air-conditioning.

COMMERCIAL MOTOR MAGAZINE *"Combo is a perfect example of well-thought-out design and execution."*
 said... *Commercial Motor, January 2002*



Combo takes a no-nonsense approach to security. Remote control central deadlocking and an electronic engine deadlock immobiliser are both fitted as standard. While unglazed rear doors (available at no extra cost) and an optional upper load

restraint mesh ensure that load area contents remain out of sight and well-protected at all times. When it comes to safety, Combo again takes its responsibilities seriously, with a driver's airbag as standard and a passenger's airbag

and an anti-lock braking system, available as part of the optional Safety pack (see page 42). Not surprising then, that Combo achieves an insurance rating of group 1E – the lowest insurance classification in its class. Even the Dualfuel model is only group 2E.

secure



> the facts

Driver's airbag (1) > **Pyrotechnic body-lock seatbelt pretensioners** > **Seatbelt force limiters** – reduce loading on the occupant's chest when force exerted by seatbelt exceeds a specified level > **Side-impact protection beams** > **Pedal release system** – helps prevent the driver's legs and feet impacting with pedals in severe frontal impacts > **Electronic engine deadlock immobiliser** > **Remote control central deadlocking (doors and fuel flap)** > **Unglazed rear doors (no-cost option)** > **Remote control ultrasonic security alarm system (optional) (2)** > **Upper load restraint mesh (optional*) (3)**

* Standard on Dualfuel models.



Vehicle features unglazed rear doors – optional at no extra cost, plus accessory base carrier and lockable ladder rack.

A range of option packs is available at extra cost to extend Combo's versatility still further. From added comfort and convenience through to important safety and security benefits, the packs offer the perfect way to specify the options you need at a very attractive price.

Vehicle features optional nearside sliding side-access door and Function pack A.



option packs

> the facts

Function pack A

- > Remote control ultrasonic security alarm system [1]
- > Map reading lights [1]
- > Heated rear windows
- > Rear window wash/wipers
- > Passenger's underseat storage tray

Safety pack

- > Anti-lock Braking System (ABS)
- > Passenger's airbag

Function pack B

- > Remote control ultrasonic security alarm system [1]
- > Map reading lights [1]
- > Unglazed rear doors and deletion of high-level LED brake lights
- > Passenger's underseat storage tray

Winter pack

- > Electrically heated seats [2]
- > Front fog lights

Trim pack

- > Cloth front door trim inserts
- > Load area headlining [3]
- > Load area storage net pockets [3]



accessories

Vauxhall offers a comprehensive range of accessories to allow you to tailor your Combo to meet the demands of your business. For details of the complete range of Combo accessories please ask

your Vauxhall van dealer for a copy of the Vauxhall Van Range Accessories brochure. Or visit the Vauxhall website at www.vauxhall.co.uk/accessories

Safety

- > First-aid kit
- > Fire extinguisher
- > Warning triangle

Security

- > Double Security Alarm (DSA) system
- > Locking wheel bolts – set of 4
- > Steering wheel security clamp

Interior – Cabin Area

- > Floor mats

Interior – Load Area

- > 12v auxiliary power socket for load area
- > Anti-slip mat
- > Cargo liner
- > Load-restraining floor net
- > Rear window grilles

Exterior

- > Headlight protectors
- > Mudflaps
- > Rear parking distance sensor
- > Door wind deflector

Load Carriers

- > Base carrier
- > Full length roof rack tray
- > Ladder rack
- > Load stop kit
- > Load carrier
- > Load restraining strap
- > Loading roller

Towing

- > Fixed or flange tow bar with 12N or 12N/12S electrics

Audio and Communications

- > Stereo radio/cassette players
- > Stereo radio/CD players
- > Speakers
- > Audio storage
- > Satellite navigation systems

Styling by Irmscher

- > Interior styling
- > Exterior styling
- > Alloy wheels
- > Wheel accessories



Vehicle features accessory base carrier, full length roof rack tray and loading roller.

Colour and trim availability

	Corsavan trim		Astravan trim			Combo trim	
Exterior colours	Orleans cloth	Envoy/LS Namur cloth	Envoy/LS Texas cloth*	Envoy Vinyl**	Sportive Texas cloth	Klimt cloth	Vinyl**
Solid							
Aruba Blue	Grey	—	—	—	—	Grey	Grey
Cargo Yellow (special order)	Grey	Charcoal	Anthracite	Black	—	Grey	Grey
Flame Red	Grey	Charcoal	Anthracite	Black	Anthracite	Grey	Grey
Glacier White	Grey	Charcoal	Anthracite	Black	Anthracite	Grey	Grey
Kings Blue	—	Charcoal	Anthracite	Black	—	—	—
Royal Blue	Grey	—	—	—	—	Grey	Grey
Black (two-coat)†	—	—	—	—	—	Grey	Grey
Two-coat metallic**							
Breeze Blue	—	—	—	—	—	Grey	Grey
Prestige Blue	—	Charcoal	Anthracite	Black	—	—	—
Star Silver	Grey	Charcoal	Anthracite	Black	Anthracite	Grey	Grey
Two-coat pearlescent**							
Black Sapphire	Grey	Charcoal	Anthracite	Black	Anthracite	—	—
Jade Green	—	Charcoal	Anthracite	Black	—	—	—
Krypton Green	—	Charcoal	Anthracite	Black	—	—	—
Nocturno Blue	—	Charcoal	Anthracite	Black	—	—	—
Rubens Red	—	Charcoal	Anthracite	Black	—	Grey	Grey

* = Texas cloth trimmed sports seats are optional at extra cost on Astravan Envoy/LS models.
 ** = Vinyl trim available at extra cost on Astravan Envoy and Combo models.
 † = Black two-coat paint is optional at extra cost.
 †† = Two-coat metallic or pearlescent paint is optional at extra cost on Astravan Envoy/LS, Corsavan and Combo models and optional at no-extra cost on Astravan Sportive models.



Solid



Two-coat metallic



Two-coat pearlescent



Due to the limitations of the printing process the colours reproduced may vary from the actual colour. Please use as a guide only.

colours & trims

Trust Vauxhall

to take care of the finer details



There are more important things to life than worrying about how to finance and service your van, where to go in the event of an accident and how we go about meeting the transport challenges of the future. So when you choose Vauxhall, you can rely on us to safeguard both you and the environment around you, leaving you free to concentrate on the more important business of enjoying your van!

Useful Contacts:

- Vauxhall Mobility 0800 731 5267
- Tax-Free Sales 0870 442 1580
- Vauxhall Rental 0870 442 1567
- Fleet Support 0870 010 0651
- Vauxhall Accident Support 0800 010 304
- Sureguard extended warranty 0870 752 7020
- Vauxhall Insurance 0870 024 0240
- Vauxhall MasterHire 01926 452 557

Customer Care Commitment

Providing drivers with the highest standard of aftersales support, Vauxhall offer a three-year Customer Care Commitment* package on vans:

- A one-year unlimited mileage manufacturer's warranty
- Second and third year no-fee customer option warranty up to 60,000 miles on Corsavan, Astravan

and Combo and 100,000 miles on Vivaro and Movano base vehicle from first registration

- Vauxhall Assistance for 12 months (36 months on Movano) from first registration

* *Warranty is only available on vehicles sourced from Vauxhall Motors Ltd. Terms and conditions apply - please see your Vauxhall van dealer for details.*

Anti-perforation warranty

Your new Vauxhall van also comes with a body panel anti-perforation warranty for a period of six years from the date of first registration.

Protecting the environment

At Vauxhall, we take a broader viewpoint than the design, manufacture and selling of vans. We are committed to looking after the environment throughout the life cycle of the vehicle.

Our products are increasingly winning environmental awards, both through the use of more recycled materials and by becoming cleaner and more efficient.

Vauxhall was also the first manufacturer to offer a range of Dualfuel LPG/petrol vehicles, supported by a full factory warranty.

Sureguard protection

Particularly suitable for drivers covering higher mileages, Sureguard provides additional cover against mechanical and electrical failures above and beyond Vauxhall's Customer Care Commitment.

- Extends the comprehensive Vauxhall Assistance for the full duration of your Sureguard cover
- Can be purchased when you buy your new vehicle, building the cost into the overall finance agreement

Speak to your dealer or call 0870 752 7020 for more information.

Fleet customer services

Our dedicated support service for fleet managers includes factory demonstrators, a 48hr test drive programme, and information on whole life costs, company car taxation and finance. For further information, please call 0870 010 0651.

Business Lease

Business Lease from Vauxhall Finance is a lease financing programme offering highly competitive terms on all Vauxhall vans up to 12 months old. It offers all the versatility of a purchase-based finance plan but makes the most efficient use of current tax and cash-flow benefits to VAT-registered business users.

Business Lease is also highly flexible, offering terms of between 12 and 48 months with a variable deposit (subject to a minimum of three months' rental) and a choice of payment profiles. Ask your dealer for full details; alternatively, for a written quotation on the Vauxhall van of your choice, please contact Vauxhall Finance, Wesley House, 19 Chapel Street, Luton LU1 2SY. Security may be required, subject to status. Applicants must be aged 18 or over.

Servicing and maintenance

The best way to maximise the performance and reliability of your Vauxhall van is to have all routine servicing and maintenance carried out at a Vauxhall van dealer. There are over 200 light van and 100 heavy van dealers nationwide.

Vauxhall Assistance

Vauxhall Assistance is operated by the AA and is provided for 12 months from date of first registration and covers everything from accidents, mechanical breakdown and flat tyres to illness while driving - even lost keys. With Vauxhall Assistance, help is literally just a free** phone call away, 24 hours a day, 365 days a year!

** *Mobile phone users will be charged at their standard tariff.*

Vauxhall MasterHire

Vauxhall MasterHire provides a one-stop-shop for competitive contract hire and fleet management solutions - for business users and private individuals. For further information, please call us on 01926 452 557, or visit our website at www.masterhire.co.uk

In the event of an accident...

Free to all Vauxhall drivers, Vauxhall Accident Support is designed to help keep you mobile following an accident, with prompt recovery to a Vauxhall Approved Accident Repair Centre for repairs to a high standard.

For further information, *Freefone* 0800 010 304



No-one covers your Vauxhall like we do

We know you take care of your Vauxhall. So who can you trust to insure it? Vauxhall, of course. Vauxhall's new insurance policy offers competitively priced cover for you and your Vauxhall. For cover to fit your Vauxhall, call our friendly operators for a competitive quote.

Call now 0870 024 0240
Or buy on-line at www.vauxhall.co.uk

INSURANCE your Vauxhall would choose



Lines open weekdays 8.00am-8.00pm, Saturdays 9.00am-5.00pm. Vauxhall Insurance is underwritten by UK Insurance Limited, The Wharf, Neville Street, Leeds LS1 4AZ, member of the General Insurance Standards Council. Terms and conditions apply. Calls may be monitored or recorded.




Clean up on a shiny new Vauxhall van





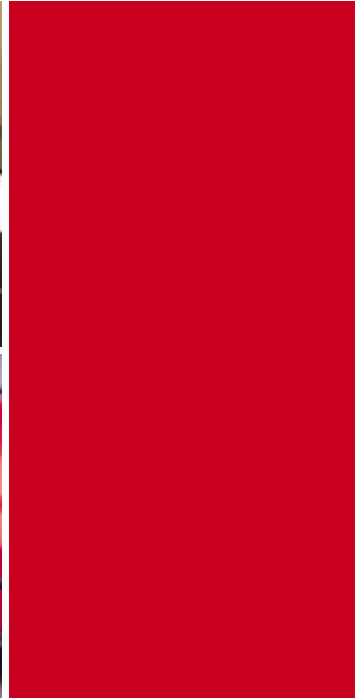
Get The GM Platinum Card and enjoy:

- 100 free Rebate Points when you first use your card - worth £100 off a new Vauxhall van
- 0% per annum on purchases and balance transfers for the first five months from account opening, **14.9% APR** (variable)
- 1/3 Rebate Points as shopping and hotel vouchers when you choose a Vauxhall as your company van.

Call **08457 462 777** quoting ref: L4N to apply for your GM Platinum Card. Or apply online at www.gmcard.co.uk/brochure

A NEW VAUXHALL
Have fun getting there

Within quotations of our credit terms available on request from: The GM Platinum Card, PO Box 9515, Birmingham B1 2DU. Credit is available to persons aged 18 years or over and is subject to the credit assessment of the cardholder. The GM Platinum Card is a credit card issued by GM Finance Services Ltd. Interest on transactions if the balance is paid in full by the due date, otherwise, interest payable from the date of transaction. Interest will be made on all Cash Advances and Balance Transfers from date of advance. Monthly minimum payment required is 2% of the outstanding balance, with a minimum of £5 of the balance if less. Other than the fixed rate for the introductory period as mentioned, all credit charges and APRs are variable. The APRs quoted are the rates for new customers. Payments will be applied first to the repayment of any introductory or promotional rate balance. Rebate Points are earned on purchases using the GM Platinum Card. Rebate Points are not earned on Cash Advances. You earn money off a Vauxhall by accumulating Rebate Points under the Rebate Points Programme. Vauxhall Motors Ltd is solely responsible for the operation of the Rebate Points Programme, which is subject to the Rebate Points Programme Rules. Rebate Points may be earned as a percentage of the purchase price of new Vauxhall vehicles and accessories. Rebate Points are not redeemable for cash. Rebate Points are redeemable as discounts on a new Vauxhall vehicle and must be redeemed within four years of your account opening. Rebate Points may not be redeemed by Mobility Connect Hire customers. The GM Card is a trading name and style of both HFC Bank plc and Vauxhall Motors Ltd. HFC Bank plc is a member of the Household International Group of Companies and is regulated by the Financial Services Authority. Registered Office: North Street, Winkfield, Windsor, Berkshire SL4 4TD. Registered in England number 1117305. Vauxhall Motors Ltd, Registered Office: Griffin House, Osborne Road, Luton, Bedfordshire LU1 3YF. Registered in England number 035767.



Every effort has been made to ensure that the contents of this publication were accurate and up-to-date at the time of going to press (September 2002).

Vauxhall vehicles are equipped with components manufactured by various General Motors operating units and outside suppliers. In line with Vauxhall's policy of continuous product improvement, the Company reserves the right to change specifications and make modifications to the vehicles described and illustrated at any time.

Any such modifications will be notified to Vauxhall dealers at the earliest opportunity; please consult your local dealer for the latest information.

The specifications detailed within this brochure are not necessarily applicable to alternative models such as Special Editions. Details of any such models will be contained in specific literature or found on the Vauxhall website.

The colours reproduced in this brochure may vary slightly from the actual paint colour or trim material due to the limitations of the printing process.

Please note that Vauxhall dealers are not the agents of Vauxhall Motors Limited and are not authorised to bind the Company by any specific or implied undertaking or representation.

It is advisable to ensure that your motor insurance policy provides adequate cover for additional fitted accessories.

As part of Vauxhall's policy of environmental care, this brochure is printed on paper manufactured using Elemental Chlorine Free pulps from specially farmed, sustainable timber resources.

All rights reserved. No part of this publication may be reproduced in any form or by any means, without the prior written permission of Vauxhall Motors Limited.

Published October 2002 (BMB)

Vauxhall Motors Limited, Luton LU1 3YT
www.vauxhall.co.uk

VM0203345