



Nissan Intelligent Mobility moves you one step ahead. In cars that feel like an extension of you, helping you see more and sense more, reacting with you, and sometimes even for you. Nissan Intelligent Mobility is about a better future — moving us to a world that’s safer, more sustainable, and exciting.

¹Feature availability is dependent on vehicle model, trim level, packaging and options. Compatible connected device may be required and feature availability may be dependent on device's capability. Refer to connected device's Owner's Manual for details. Late availability for some features. Driving is serious business and requires your full attention. Only use features and connected devices when safe and legal to do so. Some features, including automatic crash notification and SOS, are dependent upon the telematics device being in operative condition, its ability to connect to a wireless network, compatible wireless network availability, navigation map data and GPS satellite signal receptions, the absence of which can limit or prevent the ability to reach Customer Care or receive support. GPS mapping may not be detailed in all areas or reflect current road status. Never program GPS while driving. Only use Remote Engine Start and Remote Horn features in accordance with any laws, rules or ordinances in effect in your vehicle's location. Some services and features are provided by independent companies not within Nissan's control. **Should service provider terminate or restrict service or features, service or features may be suspended or terminated without notice or with no liability to Nissan or its partners or agents.** Services and features may require compatible cellular network provided by independent companies not within Nissan or its partners' or agents' control. Cellular network signal strength may vary and may not be available in all areas or at all times. Services and features may not function if cellular network is unavailable, restricted, or terminated. Nissan and its partners or agents are not responsible for associated costs or other third party changes that may be required for continued operation due to cellular network unavailability, restriction, or termination (including equipment replacements/upgrades, if available, or roaming charges on alternative networks). Technology is evolving, and changes by independent companies are not within Nissan's or its partners' or agents' control. Enrollment, owner consent, personal identification number (PIN), and subscription agreement may be required to receive full suite of features and services. Trial periods (if applicable) begin on the date of vehicle purchase or lease of a new Nissan. Trial periods may be subject to change at any time and may be subject to early termination without notice. Required subscriptions may be sold separately for each available feature or service after trial period ends, and may continue until you call service provider to cancel. Installation costs, one-time activation fee, other fees and taxes may apply. Fees and programming subject to change. Feature may be subject to age restrictions in some areas. Subscriptions governed by service provider's subscription agreement, terms and conditions and privacy statements available at service provider's website. Text rates or data usage may apply. The Nissan names, logos and slogans are trademarks owned by or licenced to Nissan Motor Co. Ltd. or its North American subsidiaries. Other trademarks and trade names are those of their respective owners. **For important safety information, system limitations, and additional operating and feature information, see Dealer or Owner's Manual.** ²Available feature. ³Remote Engine Start System to be used only in accordance with laws or rules in effect in your vehicle's location. ⁴Front passenger seats only. ⁵Outboard seats only. ⁶Do not ride in a moving vehicle when the seatback is reclined. For the most effective protection, the seat should be upright. See Owner's Manual for safety information. ⁷Leather appointments. ⁸Driving is serious business and requires your full attention. If you have to use the feature while driving, exercise extreme caution at all times so full attention may be given to vehicle operation. ⁹Driving is serious business and requires your full attention. If you have to use the connected device while driving, exercise extreme caution at all times so full attention may be given to vehicle operation. ¹⁰Use the text messaging feature after stopping your vehicle in a safe location. If you have to use the feature while driving, exercise extreme caution at all times so full attention may be given to vehicle operation. Compatible smartphone required. Text rates and/or data usage may apply. ¹¹Never program while driving. GPS mapping may not be detailed in all areas or reflect current road status. ¹²Availability of features vary by vehicle model year, model, trim level, packaging, and options. Please see Owner's Manual for important feature information. ¹³Information displayed is dependent on how vehicle is equipped. Driving is serious business and requires your full attention. If you have to use the feature while driving, exercise extreme caution at all times so full attention may be given to vehicle operation. ¹⁴Does not detect people or cargo. Always check rear seat before exiting. See Owner's Manual for safety information. ¹⁵Nissan advanced safety technologies can't prevent all collisions or warn in all situations. See Owner's Manual for important safety information. ¹⁶Intelligent Emergency Braking with Pedestrian Detection cannot prevent all collisions and may not provide warning or braking in all conditions. Driver should monitor traffic conditions and brake as needed to prevent collisions. See Owner's Manual for safety information. ¹⁷Rear Automatic Braking cannot prevent all collisions and may not provide warning or braking in all conditions. Driver should always turn and check surroundings before driving and brake as needed to prevent collisions. See Owner's Manual for safety information. ¹⁸Rear Cross Traffic Alert may not detect all vehicles. See Owner's Manual for safety information. ¹⁹Blind Spot Warning cannot prevent collisions and may not detect every object or warn in all situations. Driver should always turn and look before changing lanes. See Owner's Manual for safety information. ²⁰Lane Departure Warning and Intelligent Lane Intervention only operate when lane markings are detectable. See Owner's Manual for safety information. ²¹Intelligent Around View® Monitor cannot eliminate blind spots and may not detect every object. Driver should always turn and check surroundings before driving. See Owner's Manual for safety information. ²²Virtual composite 360° view. ²³Intelligent Forward Collision Warning cannot prevent collisions. See Owner's Manual for safety information. ²⁴Intelligent Cruise Control uses limited braking and is not a collision avoidance or warning system. Driver should monitor traffic conditions and brake as needed to prevent collisions. See Owner's Manual for safety information. ²⁵Intelligent All-Wheel Drive cannot prevent collisions or provide enhanced traction in all conditions. Always monitor traffic and weather conditions. ²⁶Horsepower and torque figures based on premium fuel only. ²⁷2023 Fuel Consumption Estimates L/100 km (MPG) — 12.0 (24) City / 8.5 (33) Highway / 10.4 (27) Combined. Actual mileage may vary with driving conditions. Use for comparison only. ²⁸Cargo shown for display purposes only. Cargo and load capacity limited by weight and distribution. Always secure cargo. Heavy loading of the vehicle with cargo, especially on the roof, will affect the handling and stability of the vehicle. ²⁹Extra cost option. ³⁰Please follow Towing Guidelines. Towing capability varies by configuration. See Nissan Towing Guide and Owner's Manual for additional information. ³¹Whichever occurs first. ³²Sonar System may not detect every object. Driver should always check surroundings before driving. See Owner's Manual for safety information. ³³Vehicle Dynamic Control cannot prevent collisions due to abrupt steering, carelessness, or dangerous driving techniques. It should remain on when driving, except when freeing the vehicle from mud or snow. See Owner's Manual for safety information. ³⁴Availability of specific features is dependent upon the phone's Bluetooth® support. Please refer to your phone Owner's Manual for details. Bluetooth® word mark and logos are owned by Bluetooth SIG, Inc., and any use of such marks by Nissan is under licence. ³⁵RearView Monitor may not detect every object and does not eliminate blind spots or warn of moving objects. See Owner's Manual for safety information. ³⁶XM® and SiriusXM® Satellite Radio is available in the 10 Canadian provinces and the 48 contiguous United States. Subscription sold separately after trial period. All subscriptions subject to customer agreement at siriusxm.ca/terms. All fees and programming subject to change. ©2022 Sirius XM Canada Inc. The Sirius®, XM®, and SiriusXM® names and all related marks and logos are trademarks of Sirius XM Radio Inc. All other trademarks are the property of their respective owners. ³⁷Tire Pressure Monitoring System is not a substitute for regular tire pressure checks. See Owner's Manual for safety information. ³⁸Vehicle must be on for the Easy-Fill Tire Alert to operate. ³⁹Airbags are only a supplemental restraint system. Always wear your seat belt. Rear-facing child restraints should not be placed in the front-passenger's seat. All children 12 and under should ride in the rear seat properly secured in child restraints, booster seats, or seat belts according to their size. Airbags will only inflate in certain accidents. See Owner's Manual for safety information. ⁴⁰Intelligent Driver Alertness cannot provide a warning in every situation. See Owner's Manual for safety information. ⁴¹Traffic Sign Recognition (TSR) may not detect and read all traffic signs in all conditions. Driver should monitor all traffic signs and obey all traffic laws. ⁴²Brake Assist cannot prevent all collisions and may not provide warning or braking in all conditions. Driver should monitor traffic conditions and brake as needed to prevent collisions. See Owner's Manual for safety information. ⁴³Up to 680 kg (1,500 lbs.) maximum towing for 2023 Murano. Towing varies by configuration. See Nissan Towing Guide and Owner's Manual for additional information. Cargo and load capacity limited by weight and distribution. Always secure cargo. Apple CarPlay®, Apple Music®, and Siri® are registered trademarks of Apple, Inc. Bluetooth® is a registered trademark of Bluetooth SIG, Inc. Bose® is a registered trademark of The Bose Corporation. Facebook® is a registered trademark of Facebook, Inc. Google, Android, Android Auto, and related marks are trademarks of Google LLC. To use Android Auto on your car display, you'll need an Android phone running Android 6 or higher, an active data plan, and the Android Auto app. HomeLink® is a registered trademark of Gentex Corporation. Instagram® is a registered trademark of Instagram, LLC. iPhone® is a registered trademark of Apple, Inc. All rights reserved. iPhone® or other external device not included. Travel Link® is a registered trademark of SiriusXM Radio Inc. Twitter® is a registered trademark of Twitter, Inc. YouTube® is a registered trademark of Google LLC. This brochure is intended for general descriptive and informational purposes only. It is subject to change and does not constitute an offer, representation or warranty (express or implied) by Nissan Canada Inc. Interested parties should confirm the accuracy of any information in this brochure as it relates to a vehicle directly with Nissan Canada Inc. before relying on it to make a purchase decision. Nissan Canada Inc. reserves the right to make changes, at any time, without prior notice, in prices, colours, materials, equipment, specifications, and models and to discontinue models or equipment. **Due to continuous product development and other pre- and post-production factors, actual vehicle, materials and specifications may vary from this brochure. Some vehicles shown with optional equipment.** See the actual vehicle for complete accuracy. Availability and delivery times for particular models or equipment may vary. For additional information on availability, options or accessories, see your Nissan dealer or contact Nissan Canada Inc. For more information on Nissan products and services visit nissan.ca. The Nissan names, logos, product names, feature names, and slogans are trademarks owned by or licenced to Nissan Motor Co. Ltd. and/or its North American subsidiaries. Printed in **November 2022**. Catalogue number: **99999-MUR23EN**. ©2022 Nissan Canada Inc. All rights reserved.

visit nissan.ca



MURANO®
2023



You deserve a crossover designed to excite

Good is fitting in. Great is standing out. And Murano® does just that. Going way beyond eye candy to deliver all-season power and instant connectivity.¹ This is a crossover that elevates the thrill like never before. This is Nissan Murano.



Enter your preferred setting

Stay cozy thanks to the Remote Engine Start System with Intelligent Climate Control that helps Murano® cool off on hot days or warm up and defrost on cold days — all before you even step inside.^{2,3} You'll appreciate a heated steering wheel and Zero Gravity climate-controlled front seats that can help reduce fatigue on longer drives.^{2,4} Rear passengers can recline and activate their own Quick Comfort® heating.^{2,5,6} It's a premium experience all around, topped off by adjustable mood lighting, touches of chrome, and dark wood-toned finishes.²



Nissan Murano® Platinum shown in Cashmere Semi-aniline Leather.⁷ U.S. instrumentation shown.



You're not just driving, you're hosting

Murano® offers a unique social space designed to let everyone connect in an airy, premium leather-appointed interior.² The wide centre console allows everyone to mingle without leaning or straining. At the wheel, you have enhanced visibility, thanks to a higher seating position and slimmer side pillars, which give way to larger windows. Meanwhile, above you, the expanded Dual Panel Panoramic Moonroof lets in natural light with an expansive view to the sky above.² An atmosphere this open makes it easy for everyone to enjoy the journey as much as the destination itself.

Nissan Murano® Platinum shown in Graphite Semi-aniline Leather.⁷ U.S. instrumentation shown.

What would you like to know?

Turn-by-turn directions, caller ID, driver assist features?^{11,12} Or maybe it's something else. Simple controls let you display what's important to you — right in front of you — on the 178 mm (7") Advanced Drive-Assist Display.¹³



U.S. instrumentation shown.¹⁴

Bose Premium Audio System The lights flash on, the first notes of the song begin to fill the air, and the crowd goes wild. This is the best concert ever, and you haven't even left the driveway. With 11 speakers, including dual subwoofers, strategically placed throughout the cabin, the Bose Premium Audio System provides the richness and detail of a live performance. Each speaker has been custom-tuned by Bose engineers to take advantage of the unique interior acoustics of Murano, so every instrument seems to hit you from a different angle. It's front-row sound so good, it might even be better than being there.²



Remote start and more from your phone

With NissanConnect® Services, you can remotely start your vehicle from nearly anywhere your smartphone works. Need to unlock your vehicle for a friend? Just tap the unlock button on your phone. You can even find your parked vehicle's location. Now that's cool.^{1,2,3}



Climate-controlled front seats

You like it cold, your front passenger likes it warm. Keep everyone happy with climate-controlled front seats that let each of you dial in comfort just as you like it.²



Seamless connectivity

Access the things you want to do on your phone, directly on Murano's 203 mm (8") touch-screen display. Just plug in a compatible smartphone and you'll stay connected.^{8,9}

Apple CarPlay® integration Equipped with Siri® voice control, Apple CarPlay® brings on board to your Murano® your contacts, favourite messaging apps, Apple Music® playlists, Apple Maps, and more. Simply plug in your compatible iPhone® and go.^{1,9,10,11}



Android Auto™ Talk to Google on Android Auto and get things done with your voice. Easily send messages, get directions, control media, and more. Just say, "Hey Google," or, in compatible cars, long-press the voice control button on your steering wheel to get started.^{1,9,10,11}

Rear USB connection ports Rear guests enjoy a USB-A port and a USB-C port for compatible devices, allowing them to stay charged and connected, without having to hand over their phones.





A more confident, exciting, and connected ride

Nissan Intelligent Mobility™ is forever changing how you move. You'll drive with greater awareness, and you can even get an assist when you need it. Everything gets easier, too, as you seamlessly sync your compatible smartphone to your Murano® and the world around you. This is the future of driving, and it's here for everyone right now.^{9,12}

Standard Nissan Safety Shield® 360

Imagine feeling confident in almost any situation. With a suite of six standard Safety Shield 360 technologies, the Nissan Murano helps look out for you all around. This is additional peace of mind you can enjoy with every Murano.¹⁵



INTELLIGENT EMERGENCY BRAKING WITH PEDESTRIAN DETECTION¹⁶



REAR AUTOMATIC BRAKING¹⁷



REAR CROSS TRAFFIC ALERT¹⁸



BLIND SPOT WARNING¹⁹



LANE DEPARTURE WARNING²⁰



HIGH BEAM ASSIST



Always looking out for you

Intelligent Around View® Monitor Keep your pride and rims intact. Intelligent Around View Monitor makes parking easy with a virtual composite 360° bird's-eye view of your Murano. You can select from split-screen close-ups of the front, rear, and curbside views for a better look. It also gives you an on-screen warning when it detects moving objects near your vehicle. We're looking at you, shopping cart.^{2,21,22}

Intelligent Forward Collision Warning What's up ahead? Murano knows. Intelligent Forward Collision Warning watches up to two cars ahead, and when it detects sudden deceleration in front of you, it gives you a warning to slow down.²³

Intelligent Cruise Control Go with the flow. Intelligent Cruise Control watches the flow of traffic to take the tedium out of your commute. The system helps maintain an adjustable speed and set distance between you and the car ahead.^{2,24}





Intelligent All-Wheel Drive

Take on more. The Intelligent All-Wheel Drive (AWD) is so responsive, it can quickly adapt to changing conditions. Snow, rain-covered pavement, or tight turns? The system automatically sends power to the wheels that need it most. Even in ideal conditions, Murano's AWD pays big dividends — our passionate engineers tuned the system for responsive, agile performance.^{12,25}

Intelligent All-Wheel Drive ²⁵	260 HP, ²⁶ 3.5-litre V6	Hill Start Assist
---	---------------------------------------	-------------------

Nissan Murano® Platinum AWD shown in Pearl White TriCoat.

Because you like your power polished

Power, courtesy of a 3.5L V6 engine Murano's 260-horsepower, 3.5-litre V6 engine keeps you ahead of the pack when you need to be.²⁶ And efficient fuel economy on the highway keeps it practical.²⁷ Of course, it doesn't hurt to have aerodynamics that give the Murano® a drag coefficient of 0.31 — comparable to sports cars.

Efficiency, brought to you by Xtronic CVT® Unlike conventional automatic transmissions, the virtually "gearless" Xtronic CVT (Continuously Variable Transmission) makes gear-hunting a thing of the past. Fully variable gear ratios mean it can hold the engine at the ideal rpm, giving you a wave of power when you need it and achieving quiet, efficient cruising when you don't.²⁷

Generous space within easy reach

With a cargo area that flexes in an instant, you've got generous space that lets you haul long and bulky items with ease. Inside, you can collapse the 60/40-split rear seats to increase your cargo volume to 1,897.2 litres (67 cu. ft.).²⁸



Motion Activated Liftgate

Hands full? Just kick under the rear bumper to open the available Motion Activated Liftgate, without reaching for a key or juggling whatever you're carrying.^{2,28}



CHOOSE YOUR COLOUR AND INTERIOR



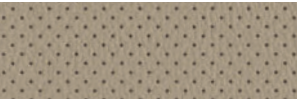
Graphite Cloth
S



Graphite Leatherette
SV



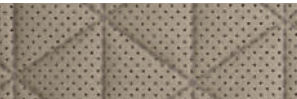
Graphite Leather⁷
SL | Midnight Edition



Cashmere Leather⁷
SL



Graphite Semi-aniline Leather⁷
Platinum

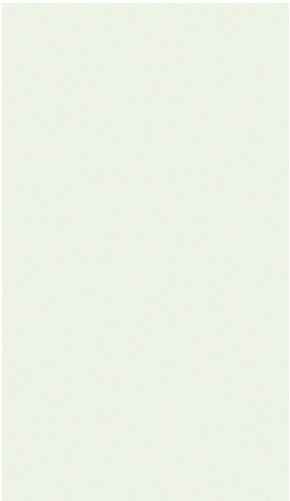


Cashmere Semi-aniline Leather⁷
Platinum

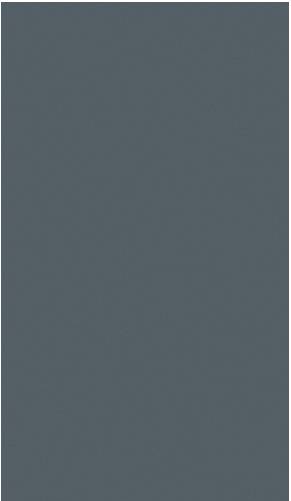


Mocha Semi-aniline Leather⁷
Platinum

Graphite Cloth	S	SV	SL	ME	PLT
Graphite Leatherette					
Cashmere Leather ⁷					
Graphite Leather ⁷					
Cashmere Semi-aniline Leather ⁷					
Graphite Semi-aniline Leather ⁷					
Mocha Semi-aniline Leather ⁷					



Pearl White TriCoat²⁹ QAB



Boulder Grey Pearl²⁹ KBY

S	SV	SL	ME	PLT



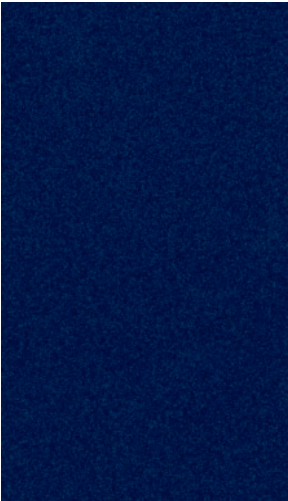
Gun Metallic²⁹ KAD

S	SV	SL	ME	PLT



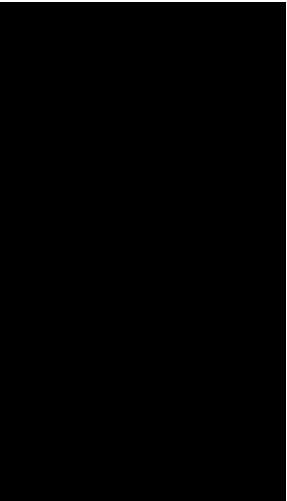
Scarlet Ember Tintcoat²⁹ NBL

S	SV	SL	ME	PLT



Deep Ocean Blue Metallic²⁹ RCJ

S	SV	SL	ME	PLT



Super Black KH3

S	SV	SL	ME	PLT

Standard

Nissan has taken care to ensure that the colour swatches presented here are the closest possible representations of actual vehicle colours. Swatches may vary slightly due to the printing process and whether viewed in daylight, fluorescent or incandescent light. Please see the actual colours at your dealer.

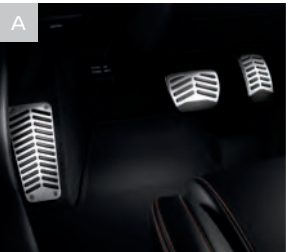
GENUINE NISSAN ACCESSORIES

Every Genuine Nissan Accessory is custom-fit, custom-designed, and durability-tested. Each one is backed by Nissan’s 3-year/60,000-km (whichever occurs first) limited warranty (if installed by dealer at the time of new vehicle purchase) and can be financed when installed by dealer at time of new vehicle purchase. Terms, conditions, and exclusions apply. See your Warranty Information Booklet for complete details.

- A. **Sport Pedals**
Step up your style.
- B. **All-Season Floor Mats (4-piece set)**
Take on rain, snow, or mud.
- C. **All-Season Cargo Area Protector**
Preserve and protect your cargo — and your Murano.^{*28}
- D. **Rear Underbody Trim**
Add a stylish touch and make your Murano your own.

Additional Accessories:

- Chrome Rear Bumper Protector
- Hatch Tent
- Tow Hitch Receiver Kit, Class I³⁰
- Carpeted Cargo Area Protector
- Removable Tote Cargo Organizer²⁸
- Remote Engine Start³
- Illuminated Kick Plates
- And More



See your Nissan dealer for details, or go to accessories.nissan.ca

BUYING AND OWNING

Finance Options Through Nissan Canada Finance, we offer many attractive lease and loan options that can be tailored to your individual needs. Please visit our website [Nissan.ca/finance](https://nissan.ca/finance) to explore all of the options available. We have also made it easy to pre-qualify online. With our flexible options, driving home a new Nissan has never been easier. Consult your local Nissan Dealership for complete details.

No-Nonsense Warranty Every 2023 Nissan is covered by a 3 year/60,000 km³¹ Comprehensive New Vehicle Warranty, a 5 year/100,000 km³¹ Powertrain Warranty, an 8 year/130,000 km³¹ Emission OBD Warranty on selected components, and a 5 year/unlimited km Corrosion Perforation Warranty. As a Nissan owner, you’ll also receive a 3 year Roadside Assistance program available to you 24 hours a day. Terms, conditions, and exclusions apply. See your Warranty Information Booklet for complete details.

Added Security Plan (ASP) For ultimate peace of mind, consider the Nissan Added Security Plan. It’s our commitment to be there for you, and to help you leave your worries behind. Different plans, available for both purchased and leased vehicles, let you tailor the coverage to your driving habits.

Security+Plus® Prepaid Maintenance Plan The smart choice when it comes to maintaining your new Nissan. Honoured at all participating Nissan Dealers in Canada and the U.S., your vehicle is cared for by factory-trained technicians using Genuine Nissan Parts. And best of all, there’s no worrying about price increases on parts or service in the future. A variety of plans are available. Ask your Dealer for details.

Nissan’s environmental action plan focuses on several key areas. In addition to increasing production of Zero Tailpipe Emission vehicles like the 100% electric LEAF®, we’re improving fuel efficiency across our lineup, and reducing the environmental impact of manufacturing through energy-efficient practices in our plants.



CHOOSE YOUR TRIM LEVEL

S	
<ul style="list-style-type: none">▪ 260 HP, 3.5-litre V6 engine²⁶▪ Xtronic CVT® (Continuously Variable Transmission)▪ Intelligent All-Wheel Drive (AWD)²⁵▪ Intelligent Forward Collision Warning²³▪ Intelligent Emergency Braking with Pedestrian Detection¹⁶▪ Lane Departure Warning²⁰▪ Intelligent Lane Intervention²⁰▪ Rear Automatic Braking¹⁷▪ High Beam Assist▪ Blind Spot Warning¹⁹▪ Rear Cross Traffic Alert¹⁸▪ Rear Sonar System³²▪ Vehicle Dynamic Control® (VDC®)³³ with Traction Control System (TCS)▪ 18" Machine-finished aluminum-alloy wheels▪ Automatic on/off headlights▪ LED headlights with LED signature Daytime Running Lights▪ LED taillights▪ Dual Zone Automatic Temperature Control▪ 6-way manual driver's seat▪ 4-way manual front-passenger's seat▪ Heated front seats▪ Nissan Intelligent Key® with Push Button Ignition▪ Heated outside mirrors	<ul style="list-style-type: none">▪ 60/40-split fold-down rear seatbacks▪ Advanced Drive-Assist Display with 178 mm (7") colour display¹³▪ Bluetooth® Hands Free Phone System with Text Messaging Assistant^{10,34}▪ NissanConnect® 203 mm (8") touch-screen display⁸▪ Voice Recognition¹¹▪ Apple CarPlay® integration¹▪ Android Auto™ compatibility¹▪ RearView Monitor³⁵▪ AM/FM/CD audio system with MP3/WMA CD playback capability▪ Two USB-A ports and two USB-C ports⁹▪ SiriusXM Radio with 3-month subscription included³⁶▪ Streaming Audio via Bluetooth® wireless technology³⁴▪ Tire Pressure Monitoring System (TPMS) with Easy-Fill Tire Alert^{37,38}▪ Rear seat belt reminder▪ Nissan Advanced Airbag System³⁹▪ Black roof rails²⁸▪ Rear Door Alert¹⁴▪ Intelligent Driver Alertness⁴⁰▪ Hill start assist



SV	INCLUDES S EQUIPMENT PLUS:
<ul style="list-style-type: none">▪ Intelligent Cruise Control²⁴▪ Intelligent Around View® Monitor²¹▪ Traffic Sign Recognition⁴¹▪ Dual Panel Panoramic Moonroof▪ Motion Activated Liftgate²⁸▪ Remote Engine Start System³ with Intelligent Climate Control▪ 10-way power driver's seat, including 2-way lumbar support	<ul style="list-style-type: none">▪ Leatherette seats▪ Leather-wrapped steering wheel and shift knob▪ Heated steering wheel▪ SiriusXM Traffic and Travel Link with 3-month trial access³⁶▪ Nissan Door to Door Navigation with Premium Traffic¹¹



SL	INCLUDES SV EQUIPMENT PLUS:
<ul style="list-style-type: none">▪ 20" Machine-finished aluminum-alloy wheels▪ Silver roof rails²⁸▪ LED fog lights▪ HomeLink® universal garage-door opener▪ Auto-dimming rearview mirror▪ Driver's seat and outside mirrors position memory	<ul style="list-style-type: none">▪ Leather-appointed seats▪ 4-way power front-passenger's seat▪ Front and Rear Sonar System³²▪ Adjustable ambient LED interior lighting▪ Bose Premium Audio System with 11 speakers, including dual subwoofers▪ Heated rear seats⁵



MIDNIGHT EDITION	INCLUDES SL EQUIPMENT PLUS:
<ul style="list-style-type: none">▪ 20" Black aluminum-alloy wheels▪ Black-painted outside mirrors▪ Black roof rails²⁸▪ Black V-Motion grille▪ Black front and rear lower bumper accents	<ul style="list-style-type: none">▪ Black side-body mouldings▪ Black exterior badges▪ Black Licence Plate Finisher▪ Black splash guards▪ Illuminated Kick Plates



PLATINUM	INCLUDES SL EQUIPMENT PLUS:
<ul style="list-style-type: none">▪ 20" Dark hyper silver aluminum-alloy wheels▪ Heated smooth leather-wrapped steering wheel▪ Semi-aniline leather-appointed seats with diamond-quilted inserts▪ Contrast micro-piping for seat, door, and console inserts	<ul style="list-style-type: none">▪ Climate-controlled front seats (heated and cooled)▪ Power-tilt and power-telescoping steering column with position memory▪ NissanConnect® Services powered by SiriusXM with trial access to 3-year Select and 6-month Premium Plus packages¹



Images may show additional available equipment.

SPECIFICATIONS

Engine	S	SV	SL	ME	PLT
3.5-litre DOHC 24-valve V6 engine	<div></div>	<div></div>	<div></div>	<div></div>	<div></div>
__Horsepower — 260 HP @ 6,000 rpm ²⁶	<div></div>	<div></div>	<div></div>	<div></div>	<div></div>
__Torque — 240 lb.-ft. @ 4,400 rpm ²⁶	<div></div>	<div></div>	<div></div>	<div></div>	<div></div>
Continuously Variable Valve Timing Control System (CVTCS) on intake valves	<div></div>	<div></div>	<div></div>	<div></div>	<div></div>
Variable induction system	<div></div>	<div></div>	<div></div>	<div></div>	<div></div>
Nissan Direct Ignition System	<div></div>	<div></div>	<div></div>	<div></div>	<div></div>
Double-tipped iridium spark plugs	<div></div>	<div></div>	<div></div>	<div></div>	<div></div>
Electronic drive-by-wire throttle	<div></div>	<div></div>	<div></div>	<div></div>	<div></div>

Drivetrain					
Intelligent All-Wheel Drive (AWD) ²⁵	<div></div>	<div></div>	<div></div>	<div></div>	<div></div>
Xtronic CVT® (Continuously Variable Transmission)	<div></div>	<div></div>	<div></div>	<div></div>	<div></div>

Brakes					
4-wheel vented disc brakes	<div></div>	<div></div>	<div></div>	<div></div>	<div></div>
4-wheel Anti-lock Braking System (ABS)	<div></div>	<div></div>	<div></div>	<div></div>	<div></div>
Electronic Brake force Distribution (EBD)	<div></div>	<div></div>	<div></div>	<div></div>	<div></div>
Brake Assist ⁴²	<div></div>	<div></div>	<div></div>	<div></div>	<div></div>

Suspension/Steering					
Independent strut front suspension	<div></div>	<div></div>	<div></div>	<div></div>	<div></div>
Multi-link rear independent suspension	<div></div>	<div></div>	<div></div>	<div></div>	<div></div>
Front and rear stabilizer bars	<div></div>	<div></div>	<div></div>	<div></div>	<div></div>
Vehicle-speed-sensitive power steering	<div></div>	<div></div>	<div></div>	<div></div>	<div></div>

Driver Assistance Technologies					
Cruise control	<div></div>	<div></div>	<div></div>	<div></div>	<div></div>
Intelligent Forward Collision Warning ²³	<div></div>	<div></div>	<div></div>	<div></div>	<div></div>
Intelligent Cruise Control ²⁴		<div></div>	<div></div>	<div></div>	<div></div>
Intelligent Emergency Braking with Pedestrian Detection ¹⁶	<div></div>	<div></div>	<div></div>	<div></div>	<div></div>
Rear Automatic Braking ¹⁷	<div></div>	<div></div>	<div></div>	<div></div>	<div></div>
Intelligent Lane Intervention ²⁰	<div></div>	<div></div>	<div></div>	<div></div>	<div></div>
Lane Departure Warning ²⁰	<div></div>	<div></div>	<div></div>	<div></div>	<div></div>
Haptic steering	<div></div>	<div></div>	<div></div>	<div></div>	<div></div>
Blind Spot Warning ¹⁹	<div></div>	<div></div>	<div></div>	<div></div>	<div></div>
High Beam Assist	<div></div>	<div></div>	<div></div>	<div></div>	<div></div>
Rear Cross Traffic Alert ¹⁸	<div></div>	<div></div>	<div></div>	<div></div>	<div></div>
RearView Monitor ³⁵	<div></div>	<div></div>	<div></div>	<div></div>	<div></div>
Intelligent Around View® Monitor ²¹	<div></div>	<div></div>	<div></div>	<div></div>	<div></div>
Rear Sonar System ³²		<div></div>	<div></div>	<div></div>	<div></div>
Front and Rear Sonar System ³²			<div></div>	<div></div>	<div></div>
Vehicle Dynamic Control® (VDC®) ³³ with Traction Control System (TCS)	<div></div>	<div></div>	<div></div>	<div></div>	<div></div>
Hill start assist	<div></div>	<div></div>	<div></div>	<div></div>	<div></div>
Traffic Sign Recognition ⁴¹	<div></div>	<div></div>	<div></div>	<div></div>	<div></div>
Intelligent Driver Alertness ⁴⁰	<div></div>	<div></div>	<div></div>	<div></div>	<div></div>

Wheels/Tires					
18" Machine-finished aluminum-alloy wheels	<div></div>	<div></div>			
20" Machine-finished aluminum-alloy wheels			<div></div>		
20" Black aluminum-alloy wheels				<div></div>	
20" Dark hyper silver aluminum-alloy wheels					<div></div>
P235/65R18 All-season tires	<div></div>	<div></div>			
P235/55R20 All-season tires			<div></div>	<div></div>	<div></div>

Exterior Features					
LED headlights with LED signature Daytime Running Lights	<div></div>	<div></div>	<div></div>	<div></div>	<div></div>
Automatic on/off headlights	<div></div>	<div></div>	<div></div>	<div></div>	<div></div>

Exterior Features (continued)	S	SV	SL	ME	PLT
LED fog lights			<div></div>	<div></div>	<div></div>
LED taillights	<div></div>	<div></div>	<div></div>	<div></div>	<div></div>
Black roof rails ²⁸				<div></div>	
Silver roof rails ²⁸			<div></div>		<div></div>
Dual Panel Panoramic Moonroof		<div></div>		<div></div>	<div></div>
Chrome V-Motion grille	<div></div>	<div></div>	<div></div>		<div></div>
Black V-Motion grille		<div></div>	<div></div>	<div></div>	
Chrome door handles	<div></div>	<div></div>		<div></div>	
Black splash guards				<div></div>	
Body-colour outside mirrors	<div></div>	<div></div>	<div></div>		<div></div>
Black-painted outside mirrors				<div></div>	
Power heated outside mirrors with LED turn signal indicators	<div></div>	<div></div>			
Power heated outside mirrors with LED turn signal indicators and reverse tilt-down feature			<div></div>	<div></div>	<div></div>
Motion Activated Liftgate ²⁸		<div></div>	<div></div>	<div></div>	<div></div>
Black front and rear lower bumper accents				<div></div>	
Black side-body mouldings				<div></div>	
Black exterior badges				<div></div>	
Black Licence Plate Finisher				<div></div>	
UV-reducing solar glass	<div></div>	<div></div>	<div></div>	<div></div>	<div></div>
Rear privacy glass	<div></div>	<div></div>	<div></div>	<div></div>	<div></div>

Comfort/Convenience					
Fine Vision electroluminescent gauges	<div></div>	<div></div>	<div></div>	<div></div>	<div></div>
Dual Zone Automatic Temperature Control with in-cabin microfilter	<div></div>	<div></div>	<div></div>	<div></div>	<div></div>
Rear passenger air conditioning vents	<div></div>	<div></div>			<div></div>
HomeLink® universal garage-door opener			<div></div>	<div></div>	<div></div>
Driver's seat and outside mirrors position memory			<div></div>	<div></div>	<div></div>
Steering-wheel position memory					<div></div>
Nissan Intelligent Key® with Push Button Ignition	<div></div>	<div></div>	<div></div>	<div></div>	<div></div>
Remote Engine Start System ³ with Intelligent Climate Control		<div></div>			<div></div>
Rear Door Alert ¹⁴	<div></div>	<div></div>			<div></div>
Power windows with front one-touch auto-up/down	<div></div>	<div></div>	<div></div>	<div></div>	<div></div>
Power door locks with auto-locking feature	<div></div>	<div></div>	<div></div>	<div></div>	<div></div>
Remote front windows down	<div></div>	<div></div>		<div></div>	<div></div>
Tilt and telescoping steering column		<div></div>	<div></div>		
Power-tilt and power-telescoping steering column					<div></div>
Variable intermittent windshield wipers	<div></div>	<div></div>	<div></div>	<div></div>	<div></div>
Intermittent rear window wiper	<div></div>	<div></div>	<div></div>	<div></div>	<div></div>
Auto-dimming rearview mirror					<div></div>
Dual illuminated visor vanity mirrors with sun visor extenders	<div></div>	<div></div>		<div></div>	<div></div>
Two 12-volt DC power outlets ⁹	<div></div>	<div></div>	<div></div>	<div></div>	<div></div>
Adjustable ambient LED interior lighting			<div></div>	<div></div>	
Dual-level centre console	<div></div>	<div></div>	<div></div>	<div></div>	<div></div>
Cargo area tie-down hooks ²⁸	<div></div>	<div></div>	<div></div>	<div></div>	<div></div>

Seating/Appointments					
6-way manual driver's seat	<div></div>				
10-way power driver's seat, including 2-way lumbar support		<div></div>	<div></div>	<div></div>	<div></div>
4-way manual front-passenger's seat	<div></div>	<div></div>			
4-way power front-passenger's seat			<div></div>	<div></div>	<div></div>
Heated front seats	<div></div>	<div></div>	<div></div>		
Climate-controlled front seats (heated and cooled)					<div></div>
Heated rear seats ⁵			<div></div>	<div></div>	<div></div>
60/40-split fold-down rear seatbacks with cargo area-accessible levers	<div></div>	<div></div>	<div></div>	<div></div>	<div></div>
Reclining rear seatbacks with centre armrest ⁶	<div></div>	<div></div>	<div></div>	<div></div>	<div></div>

Seating/Appointments (continued)	S	SV	SL	ME	PLT
Front seatback pockets	<div></div>	<div></div>	<div></div>	<div></div>	<div></div>
Cloth seat trim	<div></div>				
Leatherette seats		<div></div>			
Leather-appointed seats			<div></div>	<div></div>	
Semi-aniline leather-appointed seats					<div></div>
Contrast micro-piping for seat, door, and console inserts					<div></div>
Heated leather-wrapped steering wheel		<div></div>	<div></div>	<div></div>	
Heated smooth leather-wrapped steering wheel					<div></div>
Leather-wrapped shift knob		<div></div>	<div></div>	<div></div>	<div></div>

Infotainment					
Advanced Drive-Assist Display with 178 mm (7") colour display ¹³	<div></div>	<div></div>	<div></div>	<div></div>	<div></div>
NissanConnect® 203 mm (8") touch-screen display ⁸	<div></div>	<div></div>	<div></div>	<div></div>	<div></div>
Nissan Door to Door Navigation with Premium Traffic ¹¹		<div></div>	<div></div>	<div></div>	<div></div>
SiriusXM Traffic and Travel Link with 3-month trial access ³⁶		<div></div>	<div></div>	<div></div>	<div></div>
NissanConnect® Services powered by SiriusXM with trial access to 3-year Select and 6-month Premium Plus packages ¹					<div></div>
Voice Recognition ¹¹	<div></div>	<div></div>	<div></div>	<div></div>	<div></div>
Apple CarPlay® integration ¹	<div></div>	<div></div>	<div></div>	<div></div>	<div></div>
Android Auto™ compatibility ¹	<div></div>	<div></div>	<div></div>	<div></div>	<div></div>
Hands-free Text Messaging Assistant ¹⁰	<div></div>	<div></div>	<div></div>	<div></div>	<div></div>
Bluetooth® Hands Free Phone System ³⁴	<div></div>	<div></div>	<div></div>	<div></div>	<div></div>
AM/FM/CD display audio system with six speakers	<div></div>	<div></div>			
Bose Premium Audio System with 11 speakers, including dual subwoofers			<div></div>	<div></div>	<div></div>
MP3/WMA CD playback capability	<div></div>	<div></div>	<div></div>	<div></div>	<div></div>
Auxiliary audio input jack ⁹	<div></div>	<div></div>	<div></div>	<div></div>	<div></div>
Two USB-A ports and two USB-C ports ⁹	<div></div>	<div></div>	<div></div>	<div></div>	<div></div>
SiriusXM Radio with 3-month subscription included ³⁶	<div></div>	<div></div>	<div></div>	<div></div>	<div></div>
Streaming Audio via Bluetooth® ³⁴	<div></div>	<div></div>	<div></div>	<div></div>	<div></div>
Radio Data System (RDS)	<div></div>	<div></div>	<div></div>	<div></div>	<div></div>
Speed-sensitive volume	<div></div>	<div></div>	<div></div>	<div></div>	<div></div>
Illuminated steering wheel-mounted audio controls	<div></div>	<div></div>	<div></div>	<div></div>	<div></div>

Safety/Security					
Nissan Advanced Airbag System with supplemental front airbags with seat belt and occupant classification sensors ³⁹	<div></div>	<div></div>	<div></div>	<div></div>	<div></div>
Driver and front-passenger seat-mounted side-impact supplemental airbags ³⁹	<div></div>	<div></div>	<div></div>	<div></div>	<div></div>
Roof-mounted curtain supplemental airbags with rollover sensor for side-impact and rollover head protection for front and rear-seat outboard occupants ³⁹	<div></div>	<div></div>	<div></div>	<div></div>	<div></div>
Driver and front-passenger supplemental knee airbag ³⁹	<div></div>	<div></div>	<div></div>		<div></div>
Rear seat belt reminder	<div></div>	<div></div>	<div></div>	<div></div>	<div></div>
3-point ALR/ELR passenger seat belt system (ELR for driver)	<div></div>	<div></div>		<div></div>	<div></div>
Front seat belts with pretensioners and load limiters	<div></div>	<div></div>	<div></div>	<div></div>	<div></div>
Front-seat and three rear-seat head restraints	<div></div>	<div></div>	<div></div>	<div></div>	<div></div>
LATCH System (Lower Anchors and Tethers for CHildren)	<div></div>	<div></div>	<div></div>	<div></div>	<div></div>
Energy-absorbing steering column	<div></div>	<div></div>	<div></div>	<div></div>	<div></div>
High-strength steel side-door guard beams	<div></div>	<div></div>	<div></div>	<div></div>	<div></div>
Zone Body construction with front and rear crumple zones	<div></div>	<div></div>	<div></div>	<div></div>	<div></div>
Hood buckling creases	<div></div>	<div></div>	<div></div>	<div></div>	<div></div>
Tire Pressure Monitoring System (TPMS) with individual tire pressure display and Easy-Fill Tire Alert ^{37,38}	<div></div>	<div></div>	<div></div>	<div></div>	<div></div>
Vehicle Security System	<div></div>	<div></div>	<div></div>	<div></div>	<div></div>
Nissan Vehicle Immobilizer System	<div></div>	<div></div>	<div></div>	<div></div>	<div></div>

DIMENSIONS/CAPACITIES/WEIGHTS/FUEL

Exterior Dimensions — mm (inches)	
Wheelbase	2825 (111.2)
Overall length	4897.6 (192.8)
Overall width	1915.6 (75.4)
Overall height	1722 (67.8)
Track width (front and rear)	1640 (64.6)

Interior Dimensions — mm (inches)	
Interior (front/rear)	
Head room with moonroof	967.3 (38.1) / 959.3 (37.8)
Head room without moonroof	1013.8 (39.9) / 1010.8 (39.8)
Leg room	1028.1 (40.5) / 981.9 (38.7)
Shoulder room	1512.3 (59.5) / 1495 (58.9)

Cargo Dimensions — mm (inches)	
Length with rear seat up	940.9 (37.0)
Length with rear seat down	1888.6 (74.4)
Width	1092 (43.0)
Height with moonroof	808.2 (31.8)
Height without moonroof	855.7 (33.7)

Capacities	
Seating capacity	5
Interior passenger volume with moonroof — L (cu. ft.)	2911 (102.8)
Interior passenger volume without moonroof — L (cu. ft.)	3061.1 (108.1)
Cargo volume with rear seat up — L (cu. ft.) ²⁸	909 (32.1)
Cargo volume with rear seat down — L (cu. ft.) ²⁸	1897.2 (67.0)
Fuel tank — L (Imp. gal.)	72 (19)
Maximum towing capacity — kg (lbs.) ⁴³	680 (1500)

Curb Weights — kg (lbs.)	
--------------------------	--

Base total	S	SV	SL	ME	PLATINUM
AWD	1823 (4021)	1864 (4111)	1884 (4155)	1884 (4155)	1893 (4174)

2023 Fuel Economy Estimates – L/100 km (MPG) ²⁷	
City (AWD)	12.0 (24)
Highway (AWD)	8.5 (33)
Combined (AWD)	10.4 (27)
__Actual mileage may vary with driving conditions — use for comparison only.	

NISSAN MURANO®

Isn't it time you were passionate about the vehicle you drive?

Welcome to the 2023 Murano.*

Follow Nissan Canada on: