



*magnificent 1958 Meteor*



## *1958 Meteor—new in a bold new way!*

Glance to your right. See how the magnificent 1958 Meteor brings boldness to life in dozens of new, exciting ways.

Here is bold new body beauty with sculptured lines as clean and crisp as tomorrow.

Here's functional beauty that embraces a wealth of bold new features that help you steer easier, ride more smoothly, travel more comfortably.

You'll discover a new kind of Multi-Drive automatic transmission that tailors performance to the way you drive. You can ride on air through the magic of Meteor's all new air suspension. Or choose your power from four new Tempest V-8's and Canada's most modern Six.

Yes in the magnificent 1958 Meteor everything you touch, everything you marvel at is new in a bold new way.

This is Meteor through all models—It's magnificent!



### ★ *Rideau 500 Two-Door Victoria Hardtop*

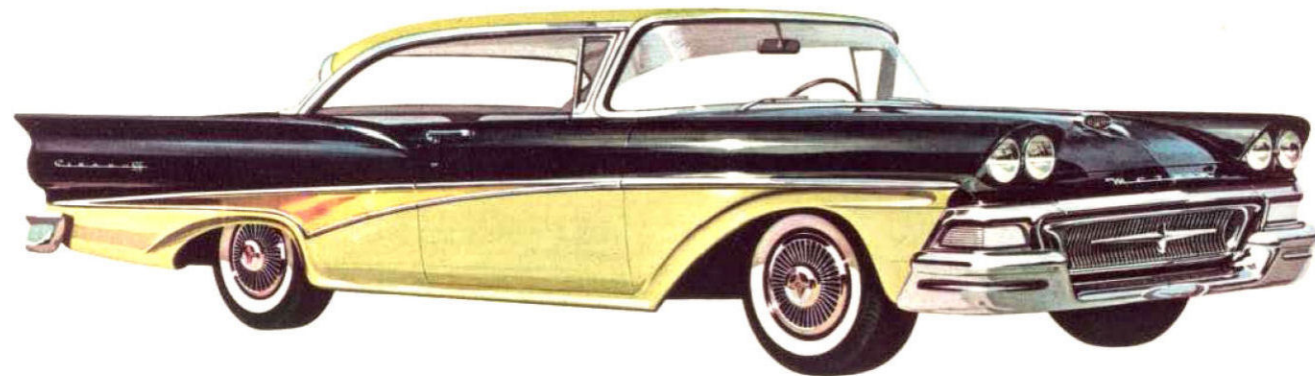
Meteor captures the look of tomorrow for your enjoyment today . . . with handsome *new* Quadri-Beam Headlamps for better, safer night driving . . . *new* Finger-Touch ball race steering . . . *new* optional air suspension and *new* Multi-Drive Merc-O-Matic transmission. Jonquil Yellow and Raven Black are two of the many *new* Meteor colours.

Front Cover Illustration

*Rideau 500*

*Four-Door Victoria Hardtop*

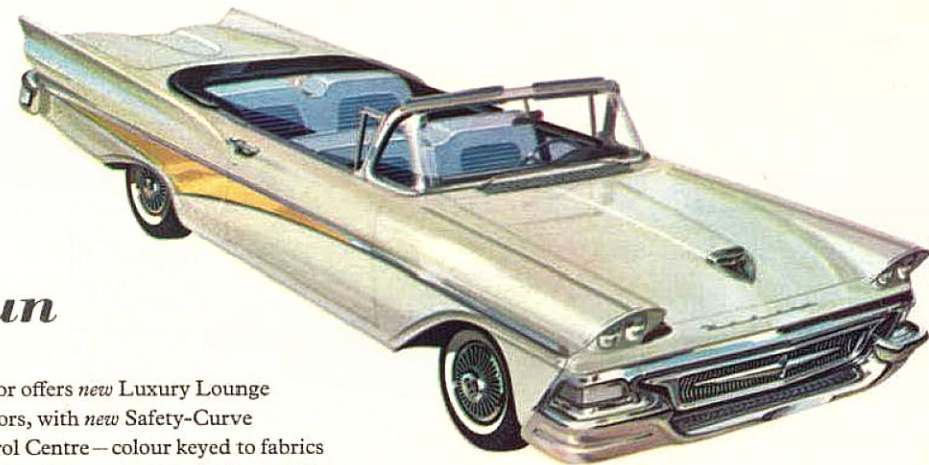
## *Rideau 500 series—in five magnificent models*





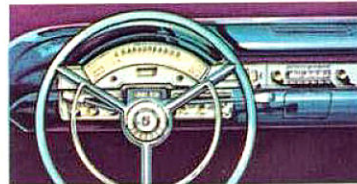
✦ **Meteor Rideau 500 Four-Door Sedan**  
Slim centre pillars on this Meteor are concealed by shimmering metal for a trim hardtop look. Riding is *new* and wonderful, thanks to a low outswept frame . . . and a "tight" *new* body — silent, solid, secure. Two *new* Tempest V-8's, three transmissions.

✦ **Rideau 500 Sunliner Convertible**  
Touch a button—up goes the top; snug and secure. When blue skies beckon—drop the top in seconds, quietly, neatly. Truly this Meteor is for sun-lovers . . . and performance lovers. It offers Meteor's exclusive Balanced Ride, *new* Finger-Touch ball race steering and bold *new* Tempest V-8's.



## 1...2...3 big, bold ways *tanake* motoring fun

✦ **Meteor Rideau 500 Two-Door Sedan**  
This Meteor is styled like a hardtop and has Luxury Lounge interiors to harmonize with exterior colours. Long 118" wheelbase and swept back front suspension give *new* Balanced Ride. New air-suspension also available.



Meteor offers *new* Luxury Lounge interiors, with *new* Safety-Curve Control Centre—colour keyed to fabrics and trim. Features include Safeguard Deep-Dish safety steering wheel, convenient ashtray and clock, and operating controls centred for easy reach and reading.

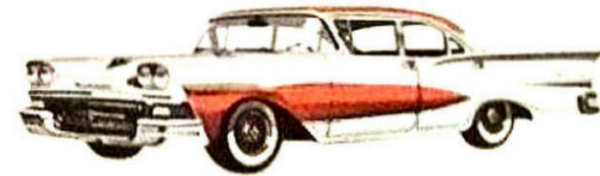
## 1958 Meteor Rideau series—in four magnificent new models



### ★ Rideau Four-Door Victoria Hardtop

From its bold new massive grille and Quadri-Beam Headlamps to its smart *new* Safety-Glow Dual Taillights, here is a car that looks big—yet is priced with the lowest. Big in beauty—big in comfort—big in value. Its long wheelbase covers nearly 10 feet of pavement.

This quartet of beauties makes real harmony. And for good reason. Meteor Rideaus are handsome examples of the bold beauty to be found throughout all Meteor models. New in hundreds of exciting ways—and every way helps make owning a Rideau a distinct pleasure. In company with the magnificent Rideau 500, Rideaus share such features as long 118" wheelbase, low 56-inch roofline and performance assets like new Multi-Drive Merc-O-Matic transmission, new Tempest V-8 or modern Six power, air suspension and, of course, the finger-tip ease of power assists. Value takes on new meaning when you move to the bold new Meteor for '58.



- ★ Rideau Four-Door Sedan  
Bold new hardtop styling with shifty Six or Tempest V-8 power
- ★ Rideau Two-Door Sedan  
Long 118" wheelbase, yet priced with the lowest
- ★ Rideau Three-Door Victoria Hardtop  
Best hardtop value in the low-price field

## Meteor station wagons love to play—willing to work!



Meet Canada's top two-way performers in everyday motoring. Pretty enough for a "dress-up" evening—rugged enough to pack a half-ton load with room left over for passengers. And like all Meteors, these bold new wagons give you the smooth riding qualities of Meteor Balanced Ride. Plus new Finger-Touch ball race steering, new Tempest V-8 or Six power, new optional Multi-Drive Merc-O-Matic transmission and new colours—20 in all.

★ *Country Sedan 4-door*—Six or nine passenger—in a choice of Tempest V-8 or Modern Six power.

★ *Niagara 300 Ranch Wagon*—Room for six plus half a ton of luggage. One of five fine wagons available.

★ *Niagara 2-door Ranch Wagon*  
Not illustrated—the all-new 4-door Niagara Ranch Wagon



**New Loading Ease**  
One handle—one pull, opens both lift and tail gates. Wide 48" opening.

**New Cargo Space**  
In two seat models, cushion of second seat folds forward to become forward part of rear deck. To get added cargo space in the rear of a 9-passenger model, third seat is removed, second seat stows away flush with floor.



## 1958 Meteor Niagara 300 series—in two bold new sedans



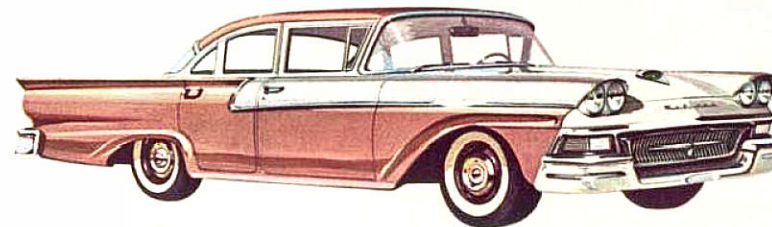
✦ **Niagara 300 Four-Door Sedan**  
New Quadri-Beam headlamps and Safety-Glow Dual Taillights add new distinction and boldness to this four-door beauty—V-8 or Six power.

✦ **Niagara 300 Two-Door Sedan**  
Room aplenty for six people—plus a big *new* trunk that swallows luggage like a warehouse. Seaspray Green and Emerald Metallic are two of many colours for 1958.

These two Niagara 300's offer you two Tempest V-8's or Canada's thriftiest Six. Niagara 300's match power with comfort through a *new* outswept chassis, strong *new* body, and long 116" wheelbase. Meteor's *new* Multi-Drive Merc-O-Matic transmission is offered with the Tempest "M" 332 V-8 Special.



## 1958 Meteor Niagara series—value leader of the low-price field



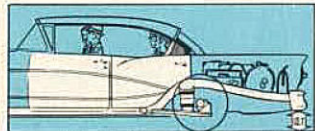
✦ **Niagara Four-Door Sedan**  
This smoothie gives nearly 17 feet of bold functional beauty.

✦ **Niagara Two-Door Sedan**  
Big in looks, big in performance—in two V-8's or thrifty Six.

In everything that counts, Meteor Niagaras rate with the finest. Save with a low price. Continue to save with extra mileage, thanks to Meteor's new fuel stretching short-stroke V-8 or Six cylinder engines. As in all Meteors you enjoy proven swept-back front suspension, *new* Finger-Touch ball race steering, *new* Quadri-Beam Headlamps, and bold *new* styling that's years ahead.



## Meteor's new Air-Suspension—like floating on air!



### Levels in seconds when you open door!

Load the luggage compartment to the hilt or pile in the passengers. But the instant you open a door, Air-Suspension's fast-leveling system automatically expands the air cylinders . . . returns the car to level in seconds.



### Sails through curves on an even keel!

The automatic balancing action of new Air-Suspension sweeps you through curves on an even keel. There's no swing, no sway. You never had it so level!

With Meteor's new four-wheel air-suspension, you literally float over bumps and rough roads on an even keel, regardless of load distribution. Molded nylon-rubber air-filled cushions, one located near each wheel, soak up road shock as only air can, and automatically maintain a constant distance between wheels and body to keep you *always* riding level (see pictures below). And automatic balancing of Meteor's new four-wheel air-suspension sweeps you through the sharpest turns with no swing, no sway (see left).

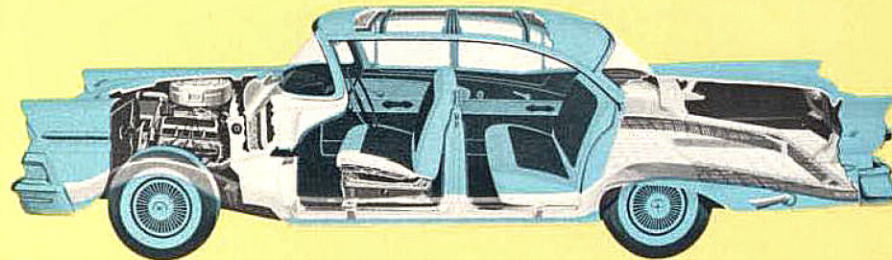


## Here's why Meteor rides smoother, is safer, more silent!

Five all-steel, channel-section cross braces run full width of roof.

Front hinged hood is spring-counterbalanced and welded into single unit for strength.

Dash Insulation is one inch thick—glass-fibre, asphalt impregnated felt, and finish board.



Special safety seat anchorage locks front seat directly to frame.

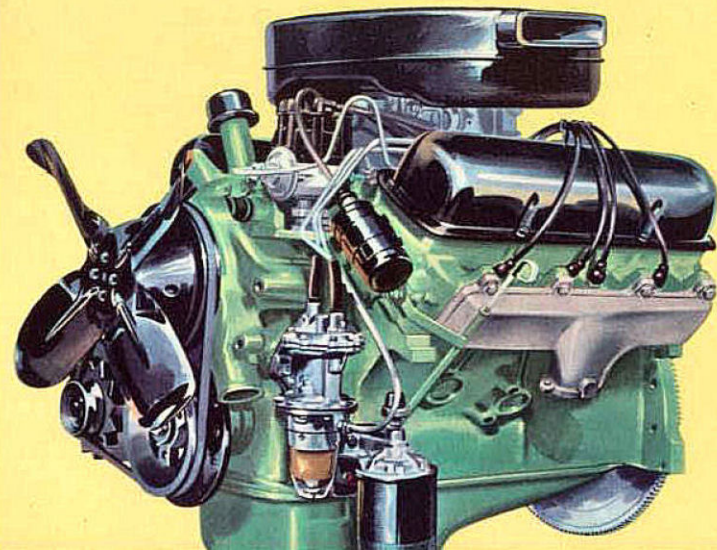
Double ribbed floor pan has five reinforcing cross-members welded to bottom surface.

Half-inch sound absorbing roof insulation—far more than others in Meteor's field.

Safety begins from the wheels up. And beneath Meteor's bold new beauty for '58 lies a brawny full cradle chassis, made stronger still by five husky cross-members. Massive side rails bow out to cradle passengers within the protection of the chassis. And this rugged foundation gives you a softer ride, because Meteor's famous 4-way

ball-joint front suspension and variable rate rear springs "dampen out" bumps and shock before they reach you, even on the roughest roads. Meteor's Finger-Touch ball race steering is new and wonderful, too. Twenty marble-smooth ball bearings roll away the work of parking, turning, steering. Provide precise reaction—easier handling.

## Bold new Tempest V-8's with Precision Fuel Induction



The most important V-8 engine improvement in 25 years! Meteor Tempest V-8's are totally new. The fuel and air mixture flows more freely, more precisely from the carburetor through a new direct intake manifold to deliver the most uniformly powerful charge possible to each combustion chamber. Result: a smoother, quieter engine . . . greater power with overdrive economy. Factory electronic balancing while engine is running dampens out vibrations for smoother performance. Meteor's Thrifty Six, like the V-8's, offers exclusive deep block, short-stroke design that gives greater strength, longer engine life.

### Choose from 5 Great Engines

ENGINES	HP.	COMP.	MODELS
Niagara M "272" V-8	190	8.6:1	Niagara
Tempest M "332" V-8	240	9.5:1	Niagara 300, Rideau, Station Wagons
Tempest M "332" V-8 Special	265	9.5:1	Rideau 500, Niagara*, Niagara 300*
Tempest M "361" V-8	303	10.5:1	Rideau*, Rideau 500*, Station Wagons*
Canada's Thriftiest Six	145	8.6:1	Niagara, Niagara 300, Rideau, Station Wagons

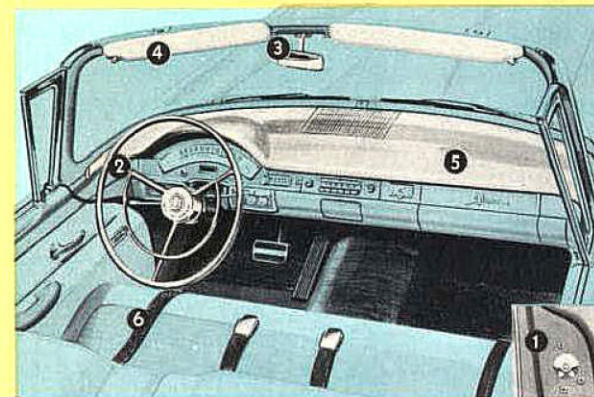
\*Optional

### 3 Terrific Transmissions

Conventional, famous Merc-O-Matic, and new personalized Multi-Drive Merc-O-Matic\*. (\*Optional with Tempest M-332 Special and M-361 V-8's only.)



## Power assists and safety go hand in hand in Meteor



Meteor for '58 brings you a bold new combination of power assists and safety for the ultimate in driving pleasure and convenience. You can have Meteor's Power Assists to help you steer easier, stop safely and raise and lower windows. You get Meteor's proven Safeguard features which include (1) New Safeguard Door Locks that resist springing open upon impact. (2) Safeguard Deep-Dish Steering Wheel absorbs impact—protects driver. (3) Safeguard Safety-Swivel Rearview Mirror swings back when struck. (4) New Vibration-free Safeguard Sun Visors, full-cushioned with super shock-absorbing material.\* (5) Safeguard Cushioned Instrument Panel and deeply recessed knobs.\* (6) Safeguard Seat Belts securely anchored for extra strength—convenience.\*

\*Worthwhile protection at very modest extra cost.

## All about the new Meteor

### ENGINES:

Specifications	Niagara M-272 V-8	Tempest M-332 V-8	Tempest M-332 Special	Tempest M-361 V-8	Thrifty Six
Displacement:	272 cu. in.	332 cu. in.	332 cu. in.	361 cu. in.	223 cu. in.
Compression Ratio:	8.6:1	9.5:1	9.5:1	10.5:1	8.6:1
Bore and Stroke	3.62" x 3.30"	4.00" x 3.30"	4.00" x 3.30"	4.05" x 3.50"	3.62" x 3.60"
Torque Rating	270 lb.-ft.	340 lb.-ft.	360 lb.-ft.	400 lb.-ft.	212 lb.-ft.
Carburetion	2-venturi	2-venturi	4-venturi	4-venturi	Single
Horsepower	190	240	265	303	145

### REAR AXLE RATIOS

Conv. Trans. Pass. Cars	3.56	3.56	3.56	3.56	3.70
Station Wagons	3.89	3.70	3.70	3.70	3.89
Merc-O-Matic Pass. Cars	3.10	2.91	2.91	2.91	3.10
Station Wagons	3.56	3.10	3.10	3.22	3.56
Multi-Drive Merc-O-Matic	N.A.	N.A.	2.69	2.69	N.A.

**Engine Features:** For greater economy and longer life, all Meteor engines have Short Stroke, low-friction design, with deep block construction; intake and exhaust valves are free-turning, overhead type; air cleaner has re-usable filter element; lubrication is full-pressure type; 12-volt electrical system has 55 amp-hr battery and 30 amp generator; new turboaction 18-mm spark plugs are designed to increase gas mileage; V-8 engines are electronically balanced while operating under own power, to provide optimum smoothness.

### TRANSMISSIONS

**Automatic Transmissions:** Merc-O-Matic—features smooth-acting torque converter combined with automatic gear train. Three

forward gears, one reverse. Water-cooled with V-8's, air-cooled with Six. **Multi-Drive**—a brand-new automatic transmission with all the advantages of Merc-O-Matic plus built-in overdrive economy and additional Drive selection which permits low- or intermediate-gear starts for full-power getaways and sure-footed acceleration. Available with Tempest M-332 Special and M-361 V-8's.

**Conventional Transmission:** Standard Gearshift and Clutch—semi-centrifugal clutch with suspended pedal. Gives the easiest manual shifting there is; gear ratios tailored to each engine for top performance and utmost economy.

### CHASSIS

**Suspension:** New 4-Way, Swept Back Ball-Joint Front Suspension has new, threaded, permanently lubricated bushings in upper control arm for softer, easier ride. Rear Springs provide a true variable-rate suspension with tension-type shackles and wind-up control rubber bumpers over springs. **Air Suspension**, optional with V-8's and automatic transmission on Rideaus, Rideau 500's and Wagons, provides the utmost in smooth, soft-riding characteristics regardless of load or road conditions. Engine-driven compressor furnishes air to reservoir tank which feeds to individual "pillow" at all four wheels. Automatic leveling valves regulate air pressure to maintain constant car height when road or load conditions change. **Frame:** Full-Cradle, Safeguard-Contoured frame; side rails flare out to permit passengers to sit within the protection of the frame; Ladder-design with five cross members gives added strength and rigidity. Silent-Grip body mounting system.

**Rear Axles:** Huskier, low-slung hypoid, semi-floating, with special Deep-Offset straddle-mounted pinion, permits lower car level without sacrifice of inside-room.

**Steering:** New Finger-Touch Ball-Race steering has recirculating ball-type steering gear for less friction, easier steering. 27 to 1 overall steering ratio. Approximately 40 ft. turning diameter.

**Brakes:** Hydraulic brakes have suspended pedal, dash mounted master cylinder, and are double-sealed self-energizing. Drum diameter is 11". Lining area is 180 sq. in. (wagons 191 sq. in.).

**Tires:** 4-ply black tubeless on safety-type rims standard on all models; 7.50 x 14 on all except 9 passenger wagons which have 8.00 x 14.

### BODY

**Exteriors and Interiors:** 20 sparkling new body colours are available. **Body:** Strong, silent, secure with five all-steel roof braces; louvered cowl-top ventilation inlet; new, safer, front-hinged hood; new 2-stage opening door hinges; five husky reinforcing cross-members welded to bottom of floor pan; cowl upper and side panels, front door pillars and dash panel integrated into one solid unit; full half-inch sound absorbing roof insulation; inch thick dash insulation.

**Lighting:** Quadri-Beam, horizontally-positioned headlamps provide greatly improved, safer lighting. Lamps are hermetically sealed and have a diameter of 5 3/4". 25% wattage increase in low beam . . . a 50% increase in the upper beam. You get the low or passing beam from outer headlights (inner lights are off). In high beam all four lights are lit . . . with inner lights providing highest intensity. Safety-Glow dual taillights—outboard units function as taillight, turn indicator and stoplight; inboard units as taillight.

**Dimensions:** 116" wheelbase for Niagara and Niagara 300 series; 201.6" overall length; front tread 59.0"; rear tread 56.4". Rideau and Rideau 500; 118" wheelbase; 207.7" overall length; front tread 59.0"; rear tread 56.4". Station Wagons: 116" wheelbase; 203.5" overall length; 59.0" front tread; 56.4" rear tread.

**Other Available Equipment:** Safeguard padding for instrument panel, and sun visors, safe-guard seat belts, Sure Stop low pedal power brakes, Master Guide power steering, power lift windows, Sun-Filter safety glass, Selectaire Conditioner, white sidewall tires, positive action windshield wiper unit, electric clock, full wheel covers, nylon tires at slight extra cost.

The specifications contained herein were in effect at the time this catalogue was approved for printing. Ford Motor Company of Canada, Limited, reserves the right to discontinue models at any time, or change specifications or design, without notice and without incurring obligation. Some of the items illustrated or referred to are optional at extra cost.



MERCURY - LINCOLN - METEOR DIVISION

FORD MOTOR COMPANY OF CANADA, LIMITED