

**Completely
new ...**

The



Magnette

MARK III

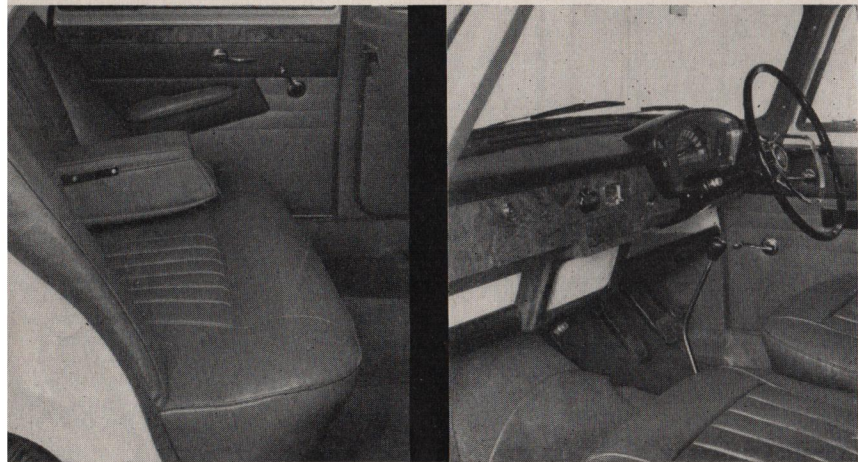
'59



... with a flawless sp



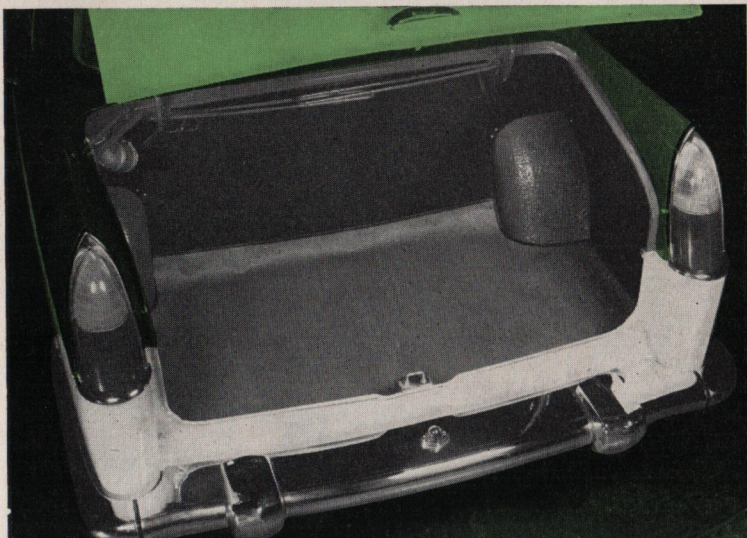
Good design, skilful planning, and fine craftsmanship are proclaimed by every detail of the interior styling and finish.



Front seats are of the fully adjusting bucket type. Rear seat has fold-back central arm-rest and door-pull side-rests.

The handsome fascia panel combines the warm texture of rich leather with the polished elegance of Indian walnut.

Luggage space is considerably increased, and every extra cubic foot is fully effective. The deep box-shaped boot is completely free from obstruction and extends to the full width of the body.



New from bumper to bumper, yet with all the familiar mag

of its successful sporting forebears, the M.G. Ma

(Mark III) is today's concept of safety-fast motoring. Long

and sleeker, it's the sports saloon with the spacio

and the Continental line. It's a lovelier car and a livelier ca

with dramatic advances in design have come further impro

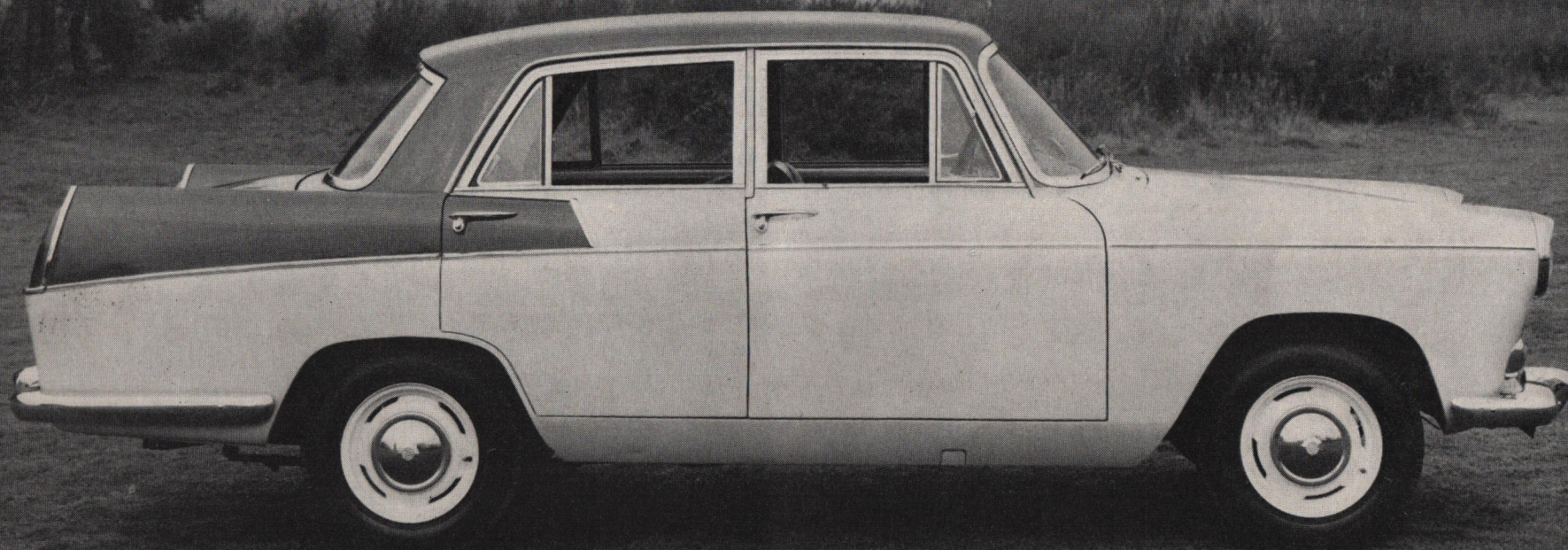
in all-round efficiency. Never before has such luxurious,

high-performance motoring been available at such mod

orting pedigree

Dimensions

Overall length	178 $\frac{1}{8}$ in. (452.15 cm.)
Overall height	59 $\frac{3}{4}$ in. (152.34 cm.)
Overall width	63 $\frac{1}{2}$ in. (160.14 cm.)
Turning circle (approx.)	37 ft. 6 in. (11.42 m.)
Track—front	48 $\frac{7}{8}$ in. (124.43 cm.)
Track—rear	49 $\frac{7}{8}$ in. (126.97 cm.)
Ground clearance (approx.)	6 in. (15.24 cm.)



tte

ir

or

ents

cost.



Safety First!

**THE M.G.
CAR COMPANY
LIMITED**

Proprietors: MORRIS MOTORS LIMITED

(Sales Division)

COWLEY, OXFORD

OVERSEAS BUSINESS:

**NUFFIELD EXPORTS
LIMITED**

Proprietors: MORRIS MOTORS LIMITED

**COWLEY, OXFORD
ENGLAND**

The issue of this folder does not constitute an offer, and the right is reserved to alter prices and/or specifications at any time without notice. Sales are conditional upon Terms of Business, Warranties, and Service arrangements issued by The M.G. Car Company Limited and/or Nuffield Exports Limited. For prices see separate list.



Preliminary specification

ENGINE: Four cylinders; bore 73.025 mm. (2.875 in.), stroke 88.9 mm. (3.5 in.), cubic capacity 1489 c.c. (90.88 cu. in.); compression ratio 8.3 : 1; overhead valves operated by push-rods from 3-bearing chain-driven camshaft; 3-bearing counterbalanced crankshaft; aluminium-alloy pistons; renewable-element external full-flow oil filter.

COOLING: By pressurized system assisted by impeller pump and fan; circulation thermostatically controlled.

IGNITION: Battery and coil; automatic advance and retard with centrifugal and vacuum control.

CARBURATION: Twin S.U. automatic semi-down draught carburettors fed from rear tank by rear-mounted S.U. electric fuel pump; oil bath air cleaner and silencer; fuel tank capacity 10 Imperial gallons (45.4 litres, 12 U.S. gallons); concealed fuel filler fitted with lock.

TRANSMISSION: Single-plate dry clutch with hydraulic actuation; 4-speed gearbox with synchromesh on second, third, and top gears, giving overall ratios of—first 15.64, second 9.52, third 5.91, top 4.3, and reverse 20.45 : 1; central floor gear change; Hardy-Spicer propeller shaft with needle-bearing universal joints; three-quarter-floating rear axle with hypoid final reduction gears—axle ratio 4.3 : 1.

BRAKES: Hydraulic fully compensated brakes; pendent-type foot pedal; 9 in. (22.9 cm.) diameter brake-drums front and rear; two-leading-shoe front brakes, leading and trailing shoes at rear; simple shoe adjustment which simultaneously adjusts the hand brake; hand brake operates on rear shoes from pull-up lever through simple compensating system.

BODY AND CHASSIS UNIT: The mono-construction 4-door saloon body incorporates the body shell, floor, bulkhead, frame member, and wing valances; large wrap-round bumpers front and rear with over-riders; deep well-sprung upholstery with foam-rubber seat cushions; leather upholstery with leathercloth on non-wearing parts; large luggage boot, 19 cu. ft. (.538 m.³) capacity, with counterbalanced lid; boot lid with lock.

SUSPENSION: Independent front suspension by coil springs and wishbones, hydraulic piston-type dampers with arms forming upper suspension link; rear suspension by semi-elliptic rubber-mounted springs and piston-type hydraulic dampers.

WHEELS AND TYRES: Ventilated disc-type wheels with 4-stud fixing; Dunlop 5.90—14 tubeless tyres; spare wheel stowed in special carrier below luggage boot.

STEERING: Cam and peg steering gearbox—ratio 15 : 1; 2-spoke 17 in. (43.2 cm.) safety steering-wheel with half horn ring; left-hand-drive not available on Home market.

ELECTRICAL EQUIPMENT: High-output dynamo with compensated voltage control; 12-volt 43-amp.-hr. battery (at 20-hr. rate); double

dipping headlamps with prefocused bulbs; foot dipping switch; separate sidelights; twin stop and tail lamps; rear reflectors; number-plate lamp; non-glare instrument lighting; dual-arm self-parking windshield wipers; twin windtone horns; flashing direction indicators with automatic cancelling control; roof lamps; ignition, headlamp main beam, and flashing signal warning lights, reversing light.

INSTRUMENTS: Speedometer with trip and total distance recorders; fuel gauge; oil gauge; engine temperature indicator; electric clock.

CONTROLS: Lighting switch; panel light switch; combined ignition and starter switch; windshield wiper switch; mixture control; flashing direction indicator control on steering column; windshield washer control; heater control.

VENTILATION: Winding windows and hinged ventilating panels to all doors; heating equipment with heat control and windshield demisting ducts.

GENERAL EQUIPMENT: Safety glass all round; large wrap-round windshield; windshield-washing equipment; driving mirror; pile carpets with underfelt; 4 ashtrays; 2 sun visors; door locks with fixed handles and push-button lock release; bucket-type front seats with individual adjustment; folding arm-rest in rear seat; arm-rests on rear doors; glovebox in fascia with locking lid; sponge-rubber protection rail above fascia; large parcel tray; provision for H.M.V. fitting radio.

OPTIONAL EXTRAS: H.M.V. radio; duotone body colours; rimblishers; heater, according to Export markets.

SINGLE BODY COLOURS

Black with crimson or beige upholstery and crimson carpet or with grey upholstery and blue carpet.

Mineral Blue with grey upholstery and blue carpet.

Iris Blue with grey upholstery and blue carpet.
Vale Green with beige upholstery and green carpet.

Island Green with beige upholstery and green carpet.

Cherry Red with crimson or beige upholstery and crimson carpet.

The road wheels are all finished in aluminium.

DUOTONE BODY COLOURS

Yukon Grey and Birch Grey with crimson upholstery and crimson carpet.

Mineral Blue and Birch Grey with grey upholstery and blue carpet.

Mineral Blue and Iris Blue with grey upholstery and blue carpet.

Vale Green and Birch Grey with grey upholstery and green carpet.

Vale Green and Island Green with beige upholstery and green carpet.

Cherry Red and Whitehall Beige with crimson upholstery and crimson carpet.

The road wheels are all finished in aluminium.





**Completely
new ...**

The



Magnette

MARK III

'59