

'62

# MONTEREY

THE BIG MERCURY



The best-looking buy for people who want, or need, a big car—with BIG-CAR style that matches the mood of the big-car family, Monterey's design reflects your good taste. BIG IN PERFORMANCE it satisfies your most demanding requirements wherever you drive. LUXURY so finely detailed you wonder how the price can be so modest. BIG-CAR RIDE so miracle smooth with Cushion-Link suspension it makes any road feel like velvet. COMFORT AND CONVENIENCE that anticipates your

pleasure, makes big-car driving sheer enjoyment. BIG IN SAVINGS with Mercury Monterey's popular-priced initial cost plus nine self-servicing features that reduce upkeep, and a choice of two thrifty V-8's or Super-Economy "6" for real gas savings. QUALITY BY DESIGN so thorough that every Mercury Monterey is dealer-warranted for one full year or 12,000 miles. You'll find Mercury Monterey for '62 your best BIG-CAR VALUE in a choice of 9 magnificent models—two superb series.

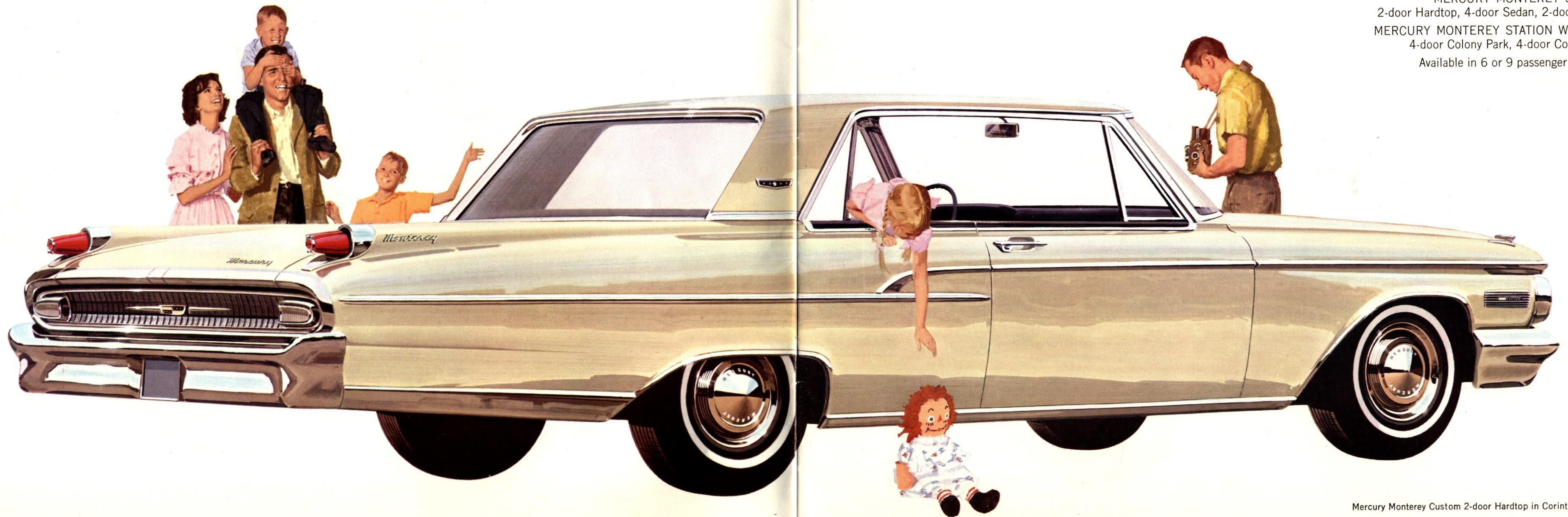
1962 MERCURY MONTEREY in a choice of 9 magnificent models . . . two superb series

MERCURY MONTEREY CUSTOM SERIES:  
Convertible, 2-door Hardtop, 4-door Hardtop, 4-door Sedan

MERCURY MONTEREY SERIES:  
2-door Hardtop, 4-door Sedan, 2-door Sedan

MERCURY MONTEREY STATION WAGONS:  
4-door Colony Park, 4-door Commuter.

Available in 6 or 9 passenger models.



Mercury Monterey Custom 2-door Hardtop in Corinthian White



MERCURY MONTEREY CUSTOM

## BIG-CAR STYLE

Custom Convertible. See those fleet, fun-to-look-at lines highlighted by brilliant touches of chrome and stainless steel. Wheel openings, taillights, front grille, rear deck and rocker panels are beautifully highlighted with crisply styled chrome. Go where you will, do what you wish, this quality car puts more fun into driving. With the top down, the world is your companion. When the weather closes in, then up with the top for sedan-snuggness. Either way, you travel in real style—with the go-power of a mighty V-8 at your command and the satin-smoothness of Mercury Monterey's exclusive Cushion-Link ride to cradle you in luxury.

Take a look at the big style leader of the popular-price field. It's the Mercury Monterey



Just press a button to lower the vinyl-coated top, revealing the supreme luxury of Mercury Monterey Custom Convertible's space-planned interior. Tasteful bright-metal accents and durable, crush-grain vinyl in a choice of four color combinations give a look and feel of fine-car richness. With top up, plastic rear window zippers open or closes with ease. Mercury Monterey interior shown in Red and White Vinyl.

Mercury Monterey Custom Convertible in Rangoon Red

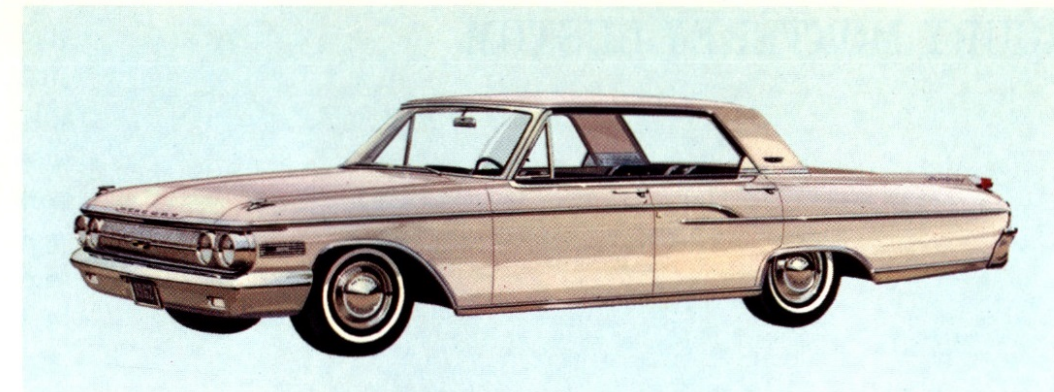
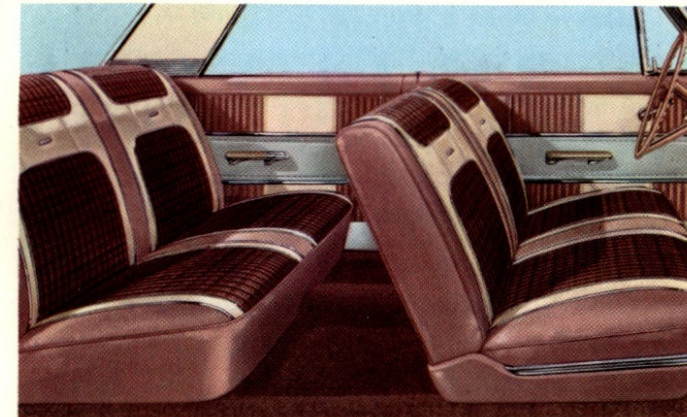


## MERCURY MONTEREY CUSTOM

# BIG IN PERFORMANCE

In 1962, Mercury Monterey offers top-of-the-line style and size, plus breathtaking performance. First off, there's a wide power-team range—you pick the performance level you like best. And for all the extra size and solid heft of the Mercury Monterey, it maneuvers and responds with traditional Mercury nimbleness. You'll like everything else about your Mercury Monterey, too: big-car ride with Cushion Link suspension, foam-padded front seats, the finest coachwork in Mercury history, nine self-servicing features that save time and money. Just take the wheel and you'll want to take Monterey home. Like every '62 Mercury Monterey, this Custom 2-door Hardtop means more value for the big-car man.

Mercury Monterey Custom interiors feature luxurious combinations of Corinthian cloth and vinyl. Interior shown in Medium Beige Corinthian Bodycloth and Light Beige vinyl.



**Mercury Monterey Custom 4-door Hardtop.** You'll love this Mercury Monterey Custom 4-door Hardtop because it combines the ideal in glamour with four-door family convenience. There's a host of standard extras: electric clock, door-operated courtesy lights, electric windshield wipers, back-up lights, Super-Economy V-8.



Mercury Monterey Custom 2-Door Hardtop in Fieldstone Tan

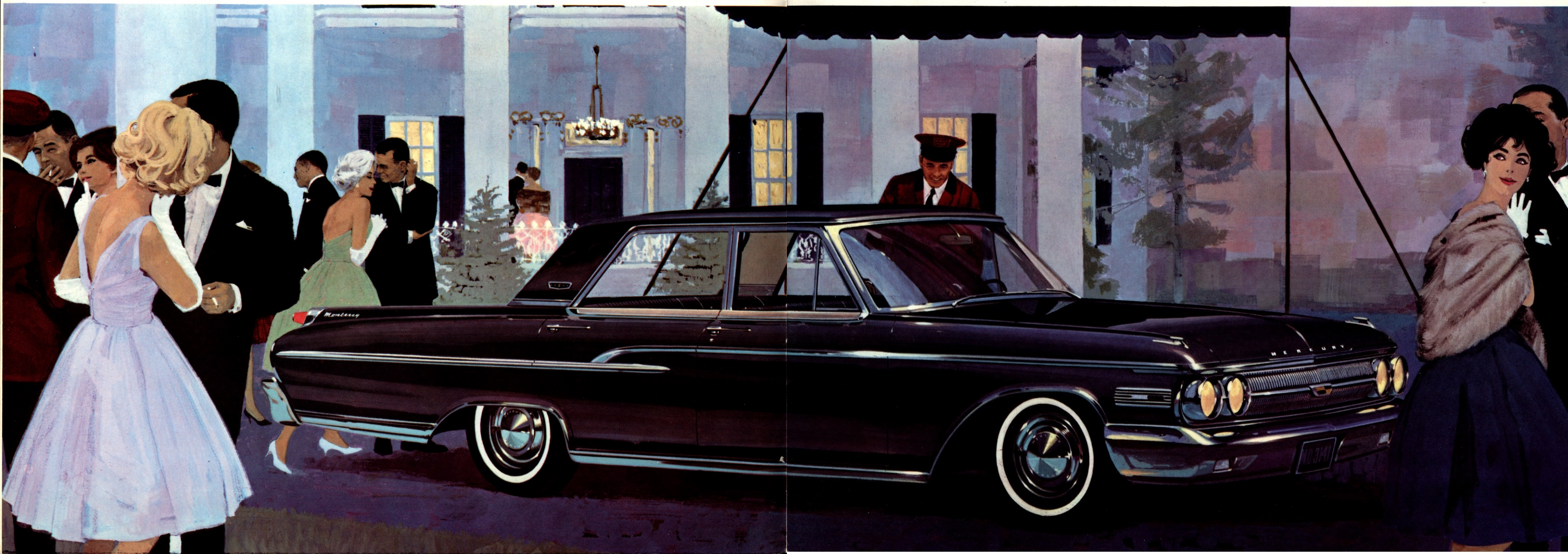


MERCURY MONTEREY CUSTOM

## LAVISH IN LUXURY

Whether you need a big car for your family or just personally prefer the "feel" and comfort of a full-size, handsome car, this Mercury Monterey Custom 4-door sedan is the car for you. High style and luxury surround you—from vinyl headlinings, superbly tailored upholstery and beautifully integrated instrument console to thick carpeting underfoot. This year Mercury Monterey Custom interiors feature luxurious combinations of Corinthian cloth and vinyl. There's a host of standard extras—electric clock, door-operated courtesy lights, electric windshield wipers, and back-up lights. This is the car that is sized and styled to meet the most discriminating of tastes. The 1962 Mercury Monterey Custom.

Mercury Monterey Custom 4-Door Sedan in Raven Black





**SMOOTH** is the ride of the new  
Mercury Monterey—  
deep-cushioned by a  
great combination of bump-smothering features!

Put a 1962 Mercury Monterey through its paces over the roughest road you can find. You'll experience a ride that's hard to believe. For this car virtually eliminates noise, bumps and jolts. It introduces you to quiet, velvet-soft riding comfort—an exciting new ride sensation—and the reasons are these:

CUSHION-LINK SUSPENSION is but one of many engineering miracles that make the Mercury Monterey ride so comfortable. Located strategically, as integral parts of both front and rear suspensions, Cushion Links actually permit the wheels to rebound under impact and smooth your way over rough going. LONG, 120-INCH WHEELBASE, extra heft and ideal weight distribution contribute to the cat-like stability and remarkable handling control, as well as to the superior ride. SWEPT-BACK BALL-JOINT FRONT SUSPENSION soaks up harshness and road shock by easing the front wheels over bumps rather than into them. REAR SPRINGS, 60 INCHES LONG, with 2½-inch wide leaves, further cushion the ride, add to passenger comfort. FULL-CUSHION SHOCK ABSORBERS ride better at all speeds on any kind of road, snub out vibrations before they ever reach you. Add the extra-generous layers of body insulation to all these features and you can understand why Mercury Monterey's ride is the envy of the industry.

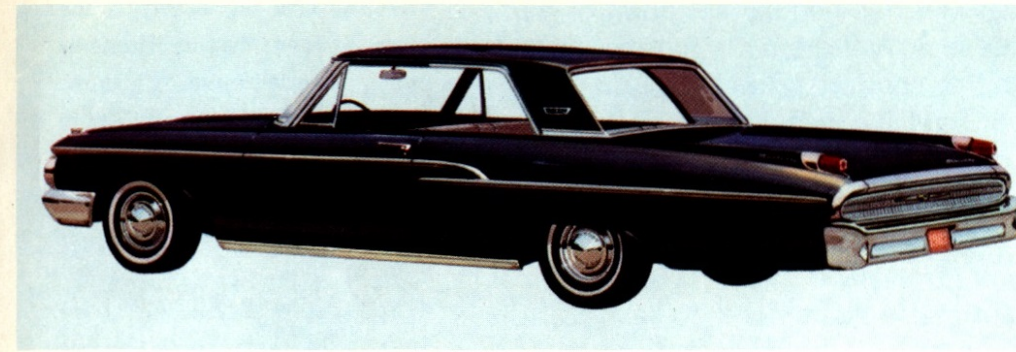




MERCURY  
MONTEREY

# BIG CAR COMFORT AND CONVENIENCE

Here's hardtop fashion at its most convenient—a wide-open invitation to driving fun that's hard to resist (even if you wanted to!). Full-time Mercury Monterey comfort helps make it that way. You'll find the promise of big interior space generously fulfilled with stretch out room to spare for half-a-dozen grown ups—and a mammoth trunk (30.7 cubic feet) for all their luggage. Wide, wide doors make it easy for the family to get in and enjoy the trip. In every way, in fact, this spacious hardtop is designed to compliment your needs and is easily available at a price that pampers a modest budget.



Mercury Monterey 2-Door Hardtop

If ever a car could be called smooth, and prove it, this one can. Just a glance tells you Mercury Monterey's smooth style is in a class by itself. A turn at the wheel will convince you of its thoroughbred performance, its smooth, precise handling. And ride. No car near the money can touch the quiet of its heavily-insulated passenger compartment, or the deep comfort assured by Cushion-Link suspension on a long-striding 120-inch wheelbase.



Mercury Monterey 2-Door Hardtop in Rangoon Red

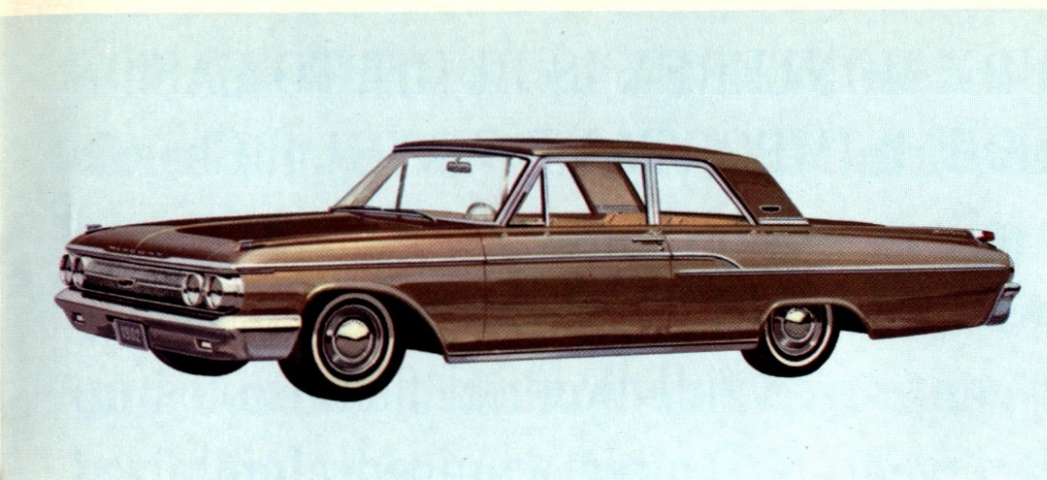


# MERCURY MONTEREY

## BIG IN SAVINGS

If you think big but like to keep your costs down, this '62 Mercury Monterey is your kind of car. There's nothing cut down or half-hearted in its big, masculine look. And there's a full measure of interior spaciousness and riding comfort, as well. Consider, too, the nine money-saving, self-servicing features found on every Mercury Monterey. Among them: brakes that stay in adjustment for the life of the linings; Super-Enamel finish that keeps new-looking without waxing; new oil filter that lets you go up to 6,000 miles between oil changes; factory-installed long-life coolant that's guaranteed to last 30,000 miles or two years, whichever comes first. And for all the extra size and money-saving graces of this Mercury Monterey, it can be yours for a surprisingly low price.

**Mercury Monterey 2-Door Sedan.** This big beauty is the lowest-priced Mercury Monterey of all. Nine self-servicing features save you time and money, add to the car's long life. The super-economy "6" squeezes bonus mileage from every tankful of regular gas. Driving is fun and dependable, thanks to strict quality standards. You'll find this car has all it takes (and then some) for you to go places in a big way.

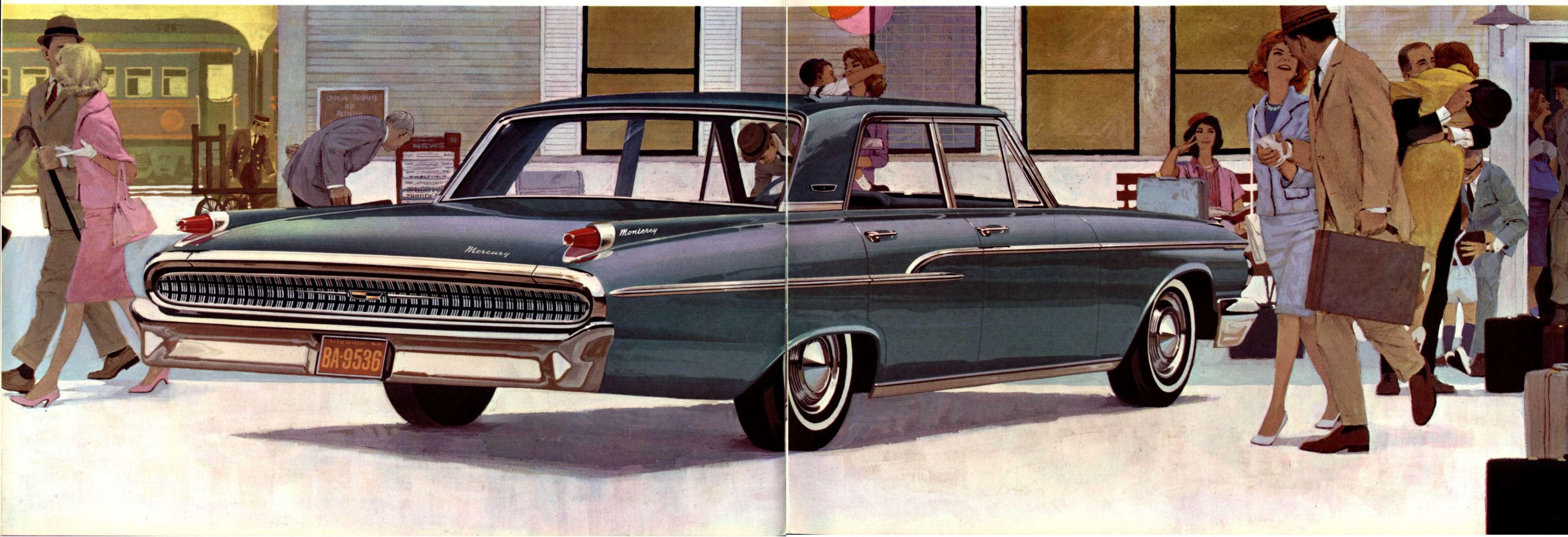


Mercury Monterey 2-Door Sedan

Mercury Monterey interior shown in Medium Blue Corinthian cloth and Medium Blue Metallic vinyl.



Mercury Monterey 4-Door Sedan

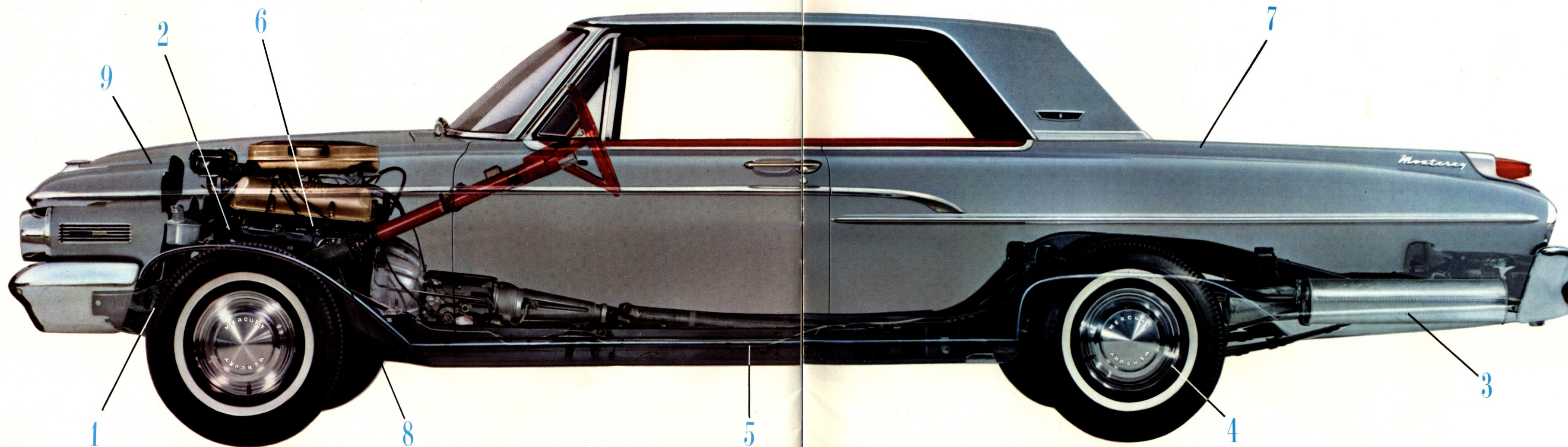




QUALITY BY DESIGN—'62 MERCURY MONTEREY IS BUILT TO LAST—BUILT TO SAVE YOU MONEY THESE 9 IMPORTANT WAYS! 1. Chassis is pre-lubricated for up to 30,000 miles—sealed joints keep out dirt and water, save time and money, give freshly-lubricated ride all the time. 2. Up to 6,000 miles between oil changes—improved full-flow oil filter saves up to 50% on engine oil and filter replacement. 3. Double wrapped aluminized muffler lasts up to three times as long as ordinary mufflers. 4. Brakes that adjust themselves—adjust mechanically equally and properly during the life of the linings. 5. Body protects itself against rust—zinc-coated body sheetmetal

and zinc-clad galvanized steel rocker panels resist corrosion two to three times longer. 6. Spark plugs last longer, save gas—self-cleaning action and bigger size (18-mm.) run cool, improve combustion and fuel economy. 7. Finish stays bright without waxing—baked-on Super-Enamel is so hard and durable ordinary washing keeps it lustrous. 8. Engine costs less to maintain, runs smoother—self-adjusting rocker arms in Super-Economy "6" compensate for valve train changes. 9. Coolant lasts two years or up to 30,000 miles—factory-installed, contains ethylene glycol concentrate and improved rust inhibitor.

All Mercury Monterey and Monterey Custom models are dealer warranted for 12,000 miles or one full year, whichever comes first.

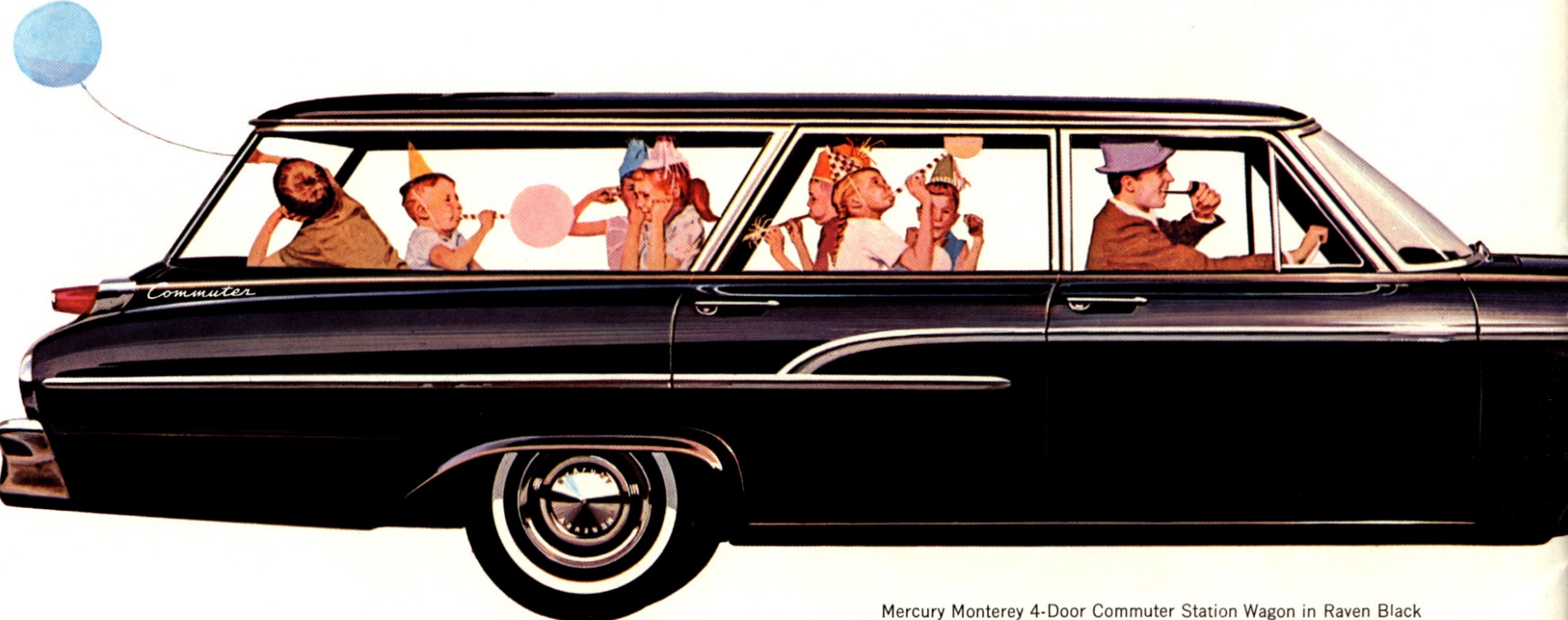




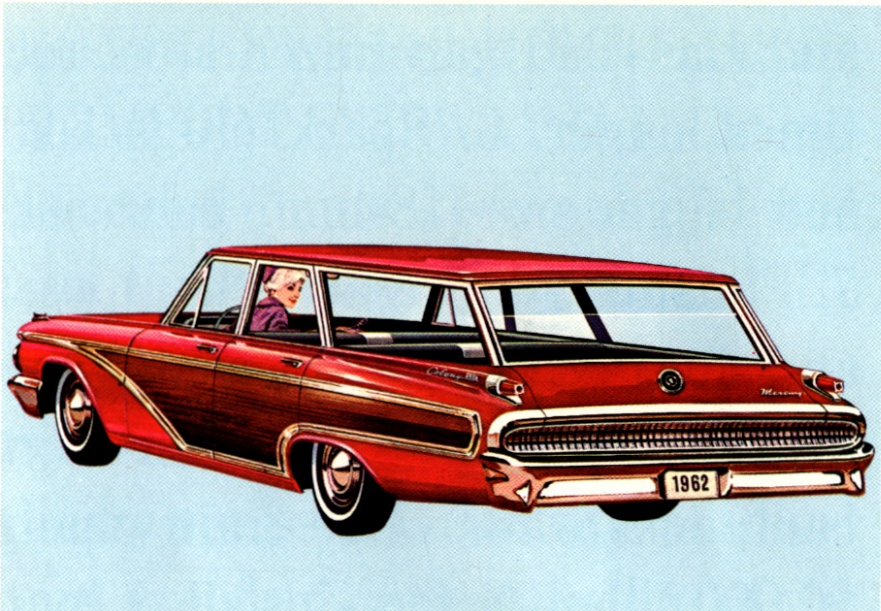
MERCURY MONTEREY STATION WAGONS

BIG AND BEAUTIFUL

... built to pamper passengers or haul huge loads in style! Mercury Monterey Colony Park and Commuter 4-Door Station Wagons. There's plenty you'll like about the new 1962 Mercury Monterey station wagons. Not the least is their low price. Each is distinctively styled, versatile enough to carry lots of passengers and loads of cargo, easy to handle on turnpike or parking lot. There's nothing quite like the smooth ride with Mercury's famous, exclusive Cushion-Link suspension. And if it's power you need,



Mercury Monterey 4-Door Commuter Station Wagon in Raven Black

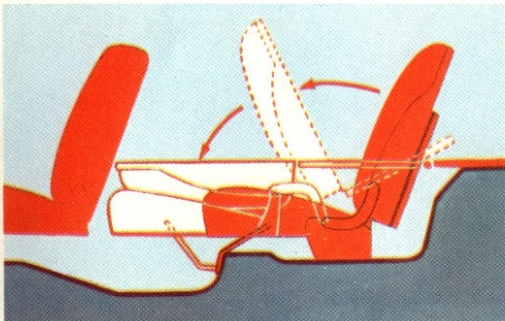


Mercury Monterey 4-Door Colony Park Station Wagon in Rangoon Red

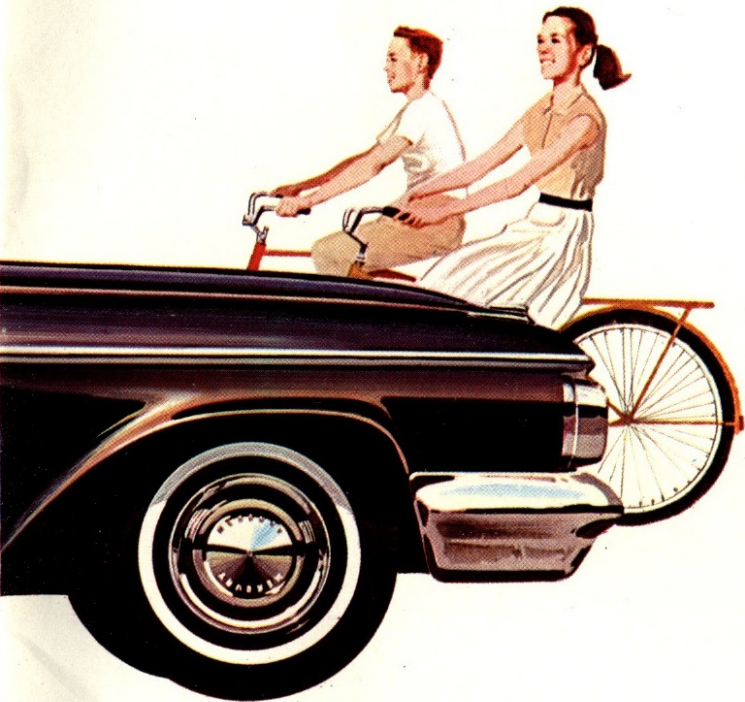
it's yours economically, in a choice of Super-Economy "6" or two efficient V-8 engines. Choose the Mercury Monterey Wagon that fits your needs with either 6- or 9-passenger seating capacity. The magnificent Colony Park (above) includes all-vinyl interior, Super-Economy V-8, carpeting, power-operated rear window and simulated-wood side panels at no extra cost. The ever popular Commuter (below) has Shadow-Weave body cloth, vinyl upholstery and a thrifty 6-cylinder engine.



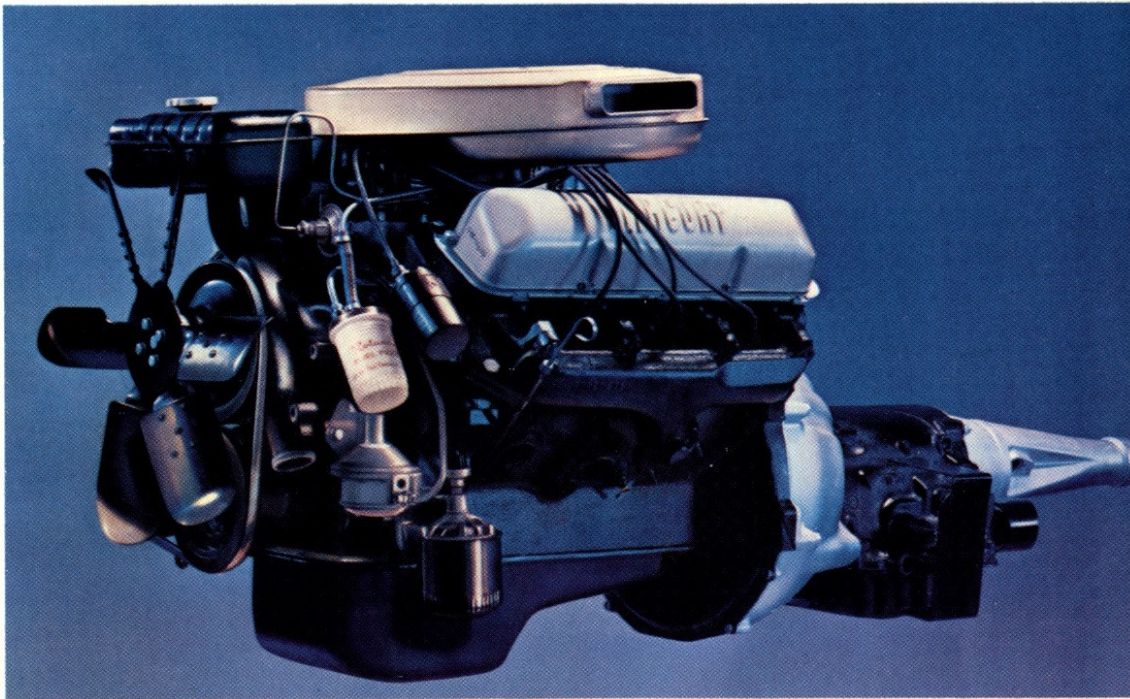
Cargo opening 3.9 inches wider simplifies loading and unloading of big 93.5 cubic-foot cargo capacity. With tailgate open, level deck is extended nearly two feet. Below-deck mounting of spare tire keeps it out of sight yet readily available.



New sedan-height 2nd seat raises or lowers with the assistance of torsion bar springs for easy one-hand operation. In 9-passenger models, forward-facing 3rd seat folds flat to complete nearly 100-inch long rear cargo deck. Third seat passengers enter easily through 3-inch wider rear doors.



Big performance with big savings—in a big range of Mercury Monterey power teams!



**ENGINES** In 1962, Mercury Monterey offers Three power plants—an extra-efficient "6" and two thoroughly-proven V-8's. Every engine is of advanced, short-stroke design for maximum fuel savings, minimum wear, high performance. Besides the Super-Economy "6" that gives top gas mileage, Mercury Monterey offers the economical Marauder "352" V-8\* that also goes on regular gas. Or if it's peak power you prefer, choose the mighty Marauder "390" V-8\* with 300 horsepower and 4-barrel carburetor.

TRANSMISSIONS

To transfer the thoroughbred power under Mercury Monterey's broad hood—smoothly and efficiently—requires a transmission both ruggedly-constructed and precision-engineered. And this great car has it . . . in a choice of three durable, quality-tested transmissions. There's an easy-shifting 3-speed transmission with a new inhibitor that makes for precise shifting into first or reverse, reduces wear on gears. Or choose Merc-O-Matic\*, least expensive automatic in the line-up. For the ultimate in quiet, effortless driving, specify Multi-Drive Merc-O-Matic\* with dual drive ranges.

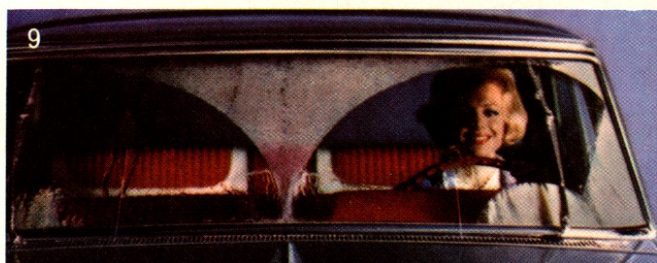
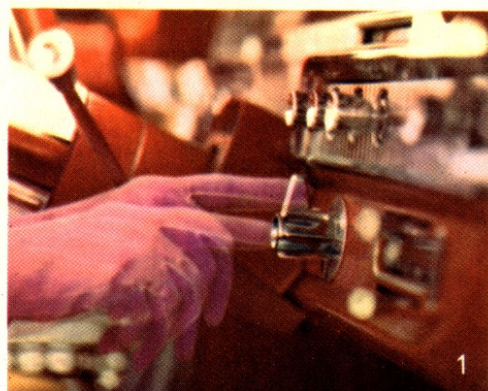
Pick the power team that fits your performance needs			
	STANDARD 3-SPEED	MERC-O-MATIC	MULTI-DRIVE MERC-O-MATIC
SUPER ECONOMY "6"	X	X	X
MARAUDER "352" V-8*	X	X	X
MARAUDER "390" V-8*			X

\*Optional at extra cost



# For added driving enjoyment, specify these Mercury Monterey options and accessories

1. Speed and cruise control 2. 4-way power seat 3. Power steering 4. Power-transfer rear axle 5. Transistorized, push-button radio 6. Heater and air conditioner 7. Power windows 8. Power brakes 9. Windshield washers



## SPECIFICATIONS

**Body Features**—High-strength rigidized construction: welded steel with full-width floor panel cross-braces. Full-length roof panel and reinforced double-panel door frames. Laminated safety plate glass windshield. Electric-powered windshield wipers with 15-inch wiper blades. 2-speed wipers.\* High-level air intake. 3-spoke safety steering wheel. Exterior finish. Baked Super-Enamel in choice of 15 solid colors and 19 two-tone combinations.\* Drop-belt area on Custom models painted in second color. Interiors—Monterey series: Pleated Shadow Weave cloth and crush-grain vinyl. Monterey Custom series:—closed cars—Corinthian cloth and vinyl upholstery. All-vinyl interiors standard on Monterey Custom convertible. Interiors—station wagon—Commuter—three Shadow Weave and vinyl combinations and one all vinyl. Colony Park—two Corinthian cloth and vinyl and four all-vinyl interiors. Floor covering: All models except Commuter station wagon feature new 20%-nylon, twisted loop-yarn carpet. Commuter station wagons—vinyl-coated carpet-texture rubber mat. Color-keyed steering wheel and column available on imported models only.

**Power Train**—Engines: In-line overhead valve 6-cylinder engine with 1-bbl. carburetor. Overhead valve V-8 engine in two sizes. 352-cu. in.

engine has 2-bbl. carburetor; 390-cu. in. engine has 4-bbl. carburetor. 12-volt electrical system. Full-flow oil filter. Full-pressure lubrication. Self-cleaning 18-mm. spark plugs. Pressurized cross-flow cooling system. Exhaust-heated intake fuel mixture. Hydraulic valve lifters on 352- and 390-cu. in. engines. Self-adjusting silent-lash rocker arms on Monterey "6". Solid-skirt pistons. Slipper-type pistons on 390-cu. in. engines. Capacities: oil (V-8's)—5 quarts with filter change, ("6")—4 quarts with filter change; fuel—sedans, 16.5 gallons—station wagon 17.5 gallons; coolant (V-8's)—16 quarts (17 with heater), ("6")—12.5 quarts (13.5 with heater). Multi-Drive Merc-O-Matic Transmission.\* Dual drive ranges with 6-position selector lever control. Merc-O-Matic.\* combination of fluid torque converter and 2-speed planetary gear train. 5-position selector lever. Standard transmission: Selective gear-type with 3 forward speeds, one reverse. Rear axles: 3.56 or 3.89 to 1 with standard transmission. 3.56 to 1 with Merc-O-Matic with 6 cyl., 3.00 or 3.56 to 1 with Merc-O-Matic and Multi-Drive with 8 cyl.

**Chassis Features**—Full-length ladder-type frame with bowed box-girder side rails. X-type reinforcement for convertible frame. Front suspension: Swept-back ball-joint design. Helical-coil springs. 3-phase hydraulic shock absorbers. Link-type front torsion-bar stabilizer. Cushion-Link suspension, front and rear. Steering: Symmetrical link-

age-type with recirculating ball-and-nut type steering gear. Over-all steering ratios—30 to 1 manual; 23 to 1 with power steering. Rear suspension: Sedans with 5-leaf springs. Station wagons with 6-leaf springs. Semi-elliptic leaf-type rear springs—60" long and 2½" wide. Diagonally mounted hydraulic shock absorbers. Hotchkiss drive. Self-adjusting brakes: self-energizing, hydraulic. 11-inch brake drums, labyrinth double-seal, with integral-cooling ribs. Brake width—2½" (f & r), (3" front for station wagons). Total brake lining area—212.5 sq. in. (234 sq. in. in station wagons). Tires: Tyrex cord tubeless—Sizes: 7.50 x 14, 8.00 x 14 standard on station wagons, optional on sedans.

\*Optional at extra cost

The specifications contained herein were in effect at the time this folder was approved for printing. Ford Motor Company of Canada, Limited, reserves the right to discontinue models at any time, or change specifications or design, without notice and without incurring obligation. Some items illustrated or referred to are standard on some models, optional at extra cost on others.

*Ford Motor Company of Canada Limited*