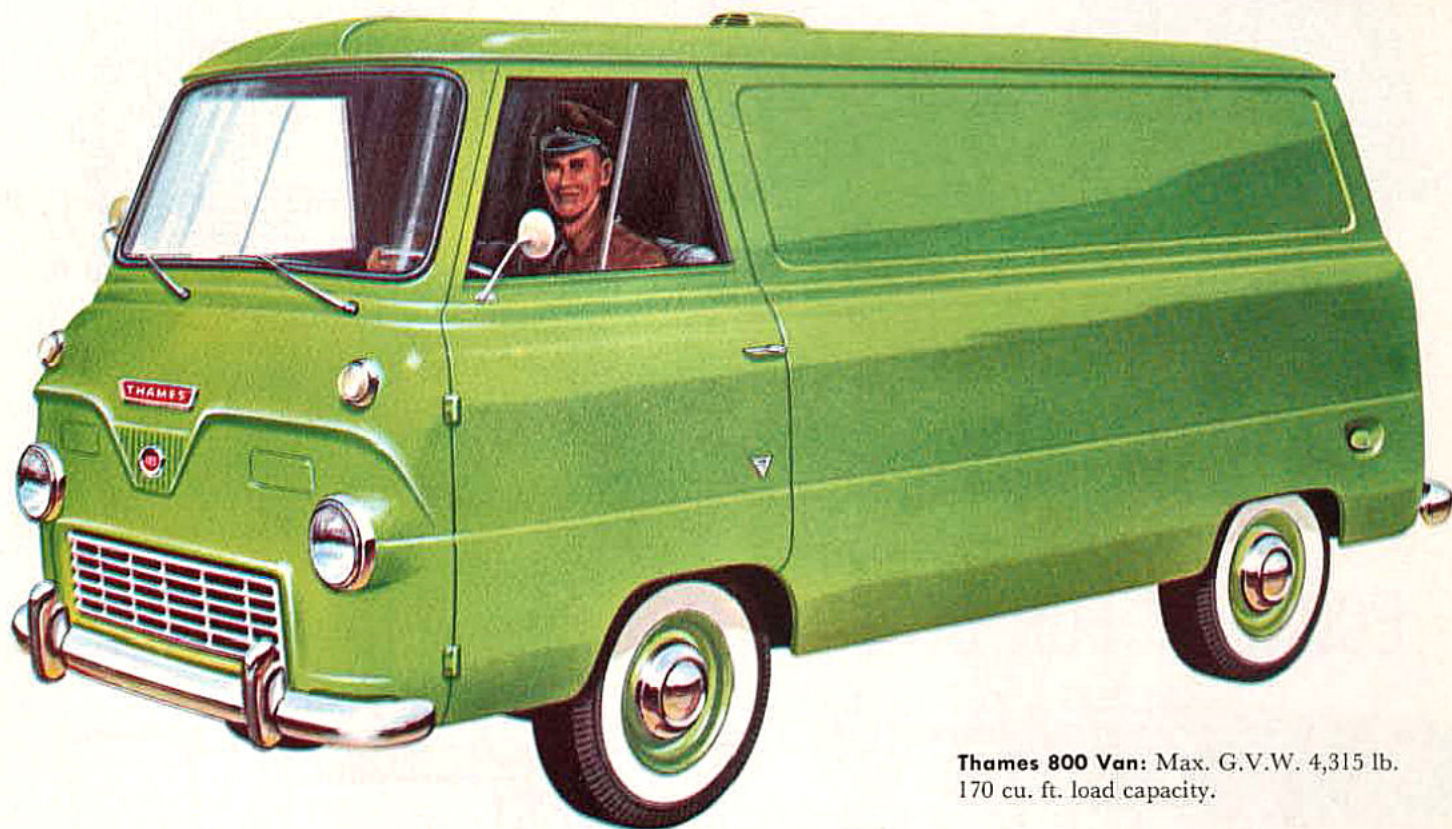


1962 THAMES SERIES

THAMES VAN • THAMES BUS • ECONOLINE PICKUP

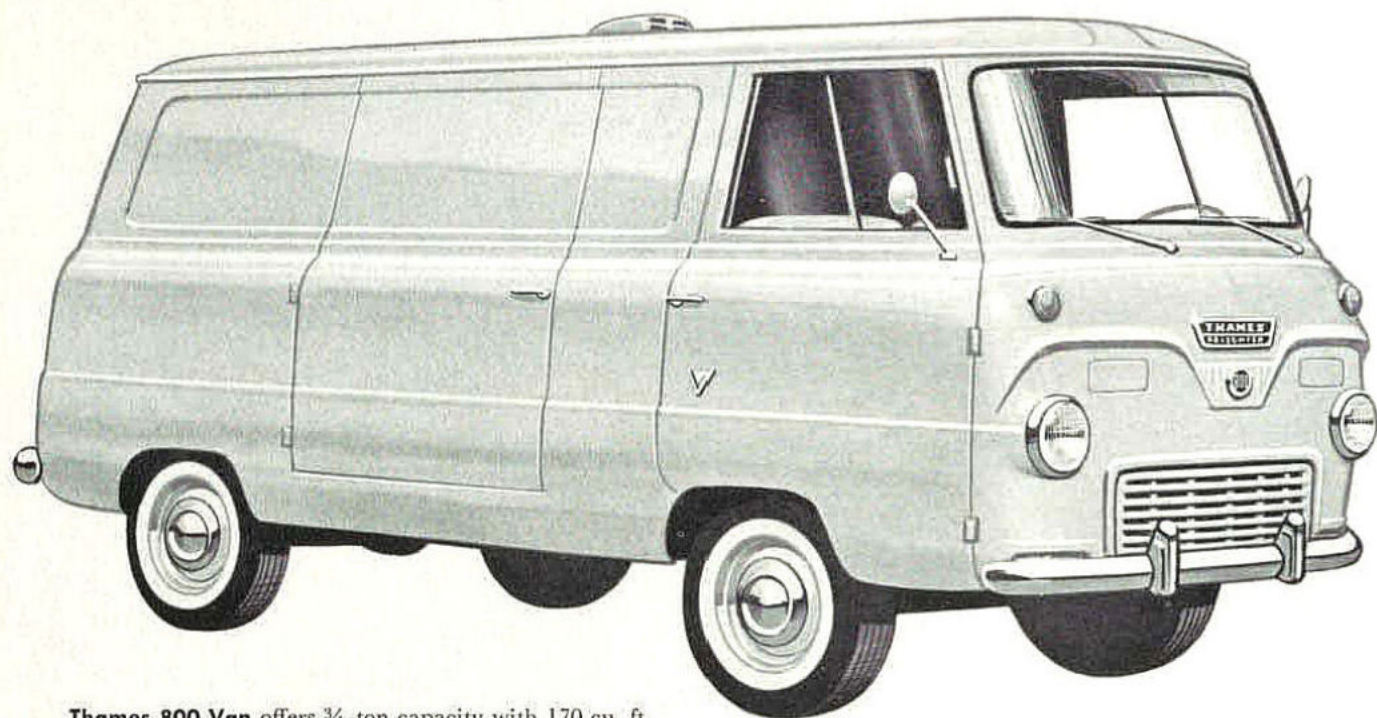
THAMES &
ECONOLINE
SERIES



Thames 800 Van: Max. G.V.W. 4,315 lb.
170 cu. ft. load capacity.



Thames 800 Estate Bus available in
8, 10 and 12 passenger models.



Thames 800 Van offers $\frac{3}{4}$ -ton capacity with 170 cu. ft. of loadspace. Wide rear doors for easy loading with level cargo floor. Curbside doors are optional.

ECONOMY FOR STOP-AND-GO DELIVERY SERVICE

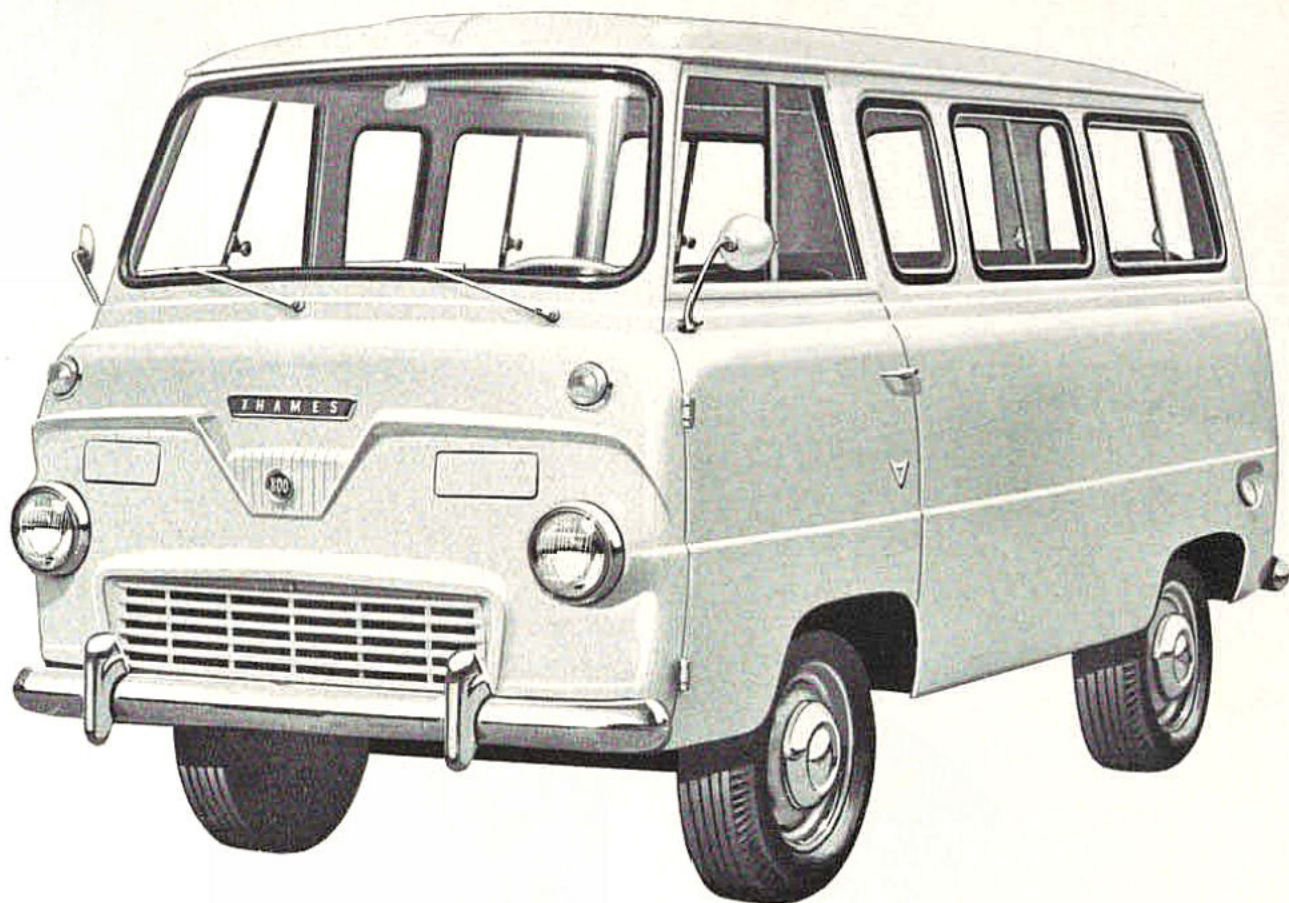


Specifications: Overall length is 159 in. on a wheelbase of 84 in. Overall width is $70\frac{1}{4}$ in. with door opening height $46\frac{1}{2}$ in. and width $47\frac{3}{4}$ in. Load length is 95 in.



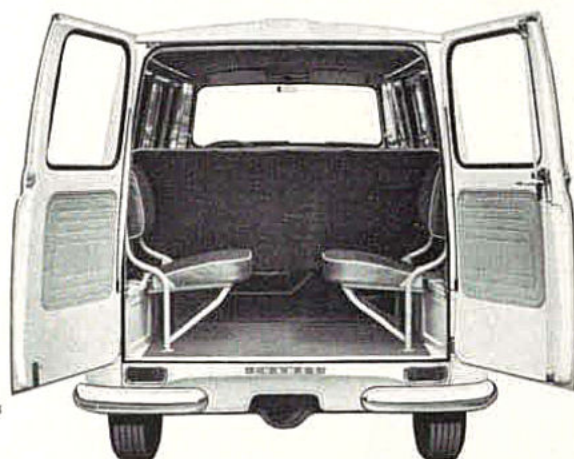
Front suspension is independent ball-joint type. Leaf spring mounted in rubber at rear. Shock absorbers standard front and rear.





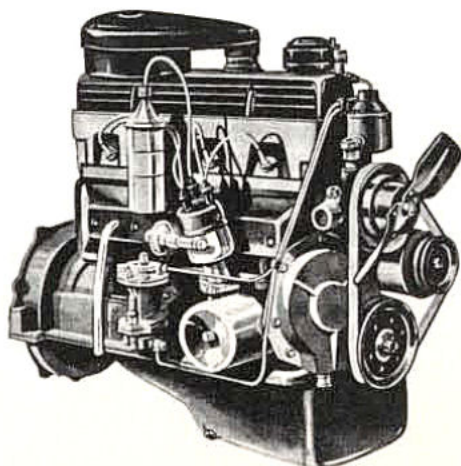
EASY TO HANDLE... EASY TO PARK

Thames 800 Estate Bus is available in 8, 10 and 12 passenger models and is as easy to handle as a family car. Model right is 12-passenger model. Side door has automatic folding step and rear door step is fixed. Steps are standard equipment. Parts and service everywhere in Canada.

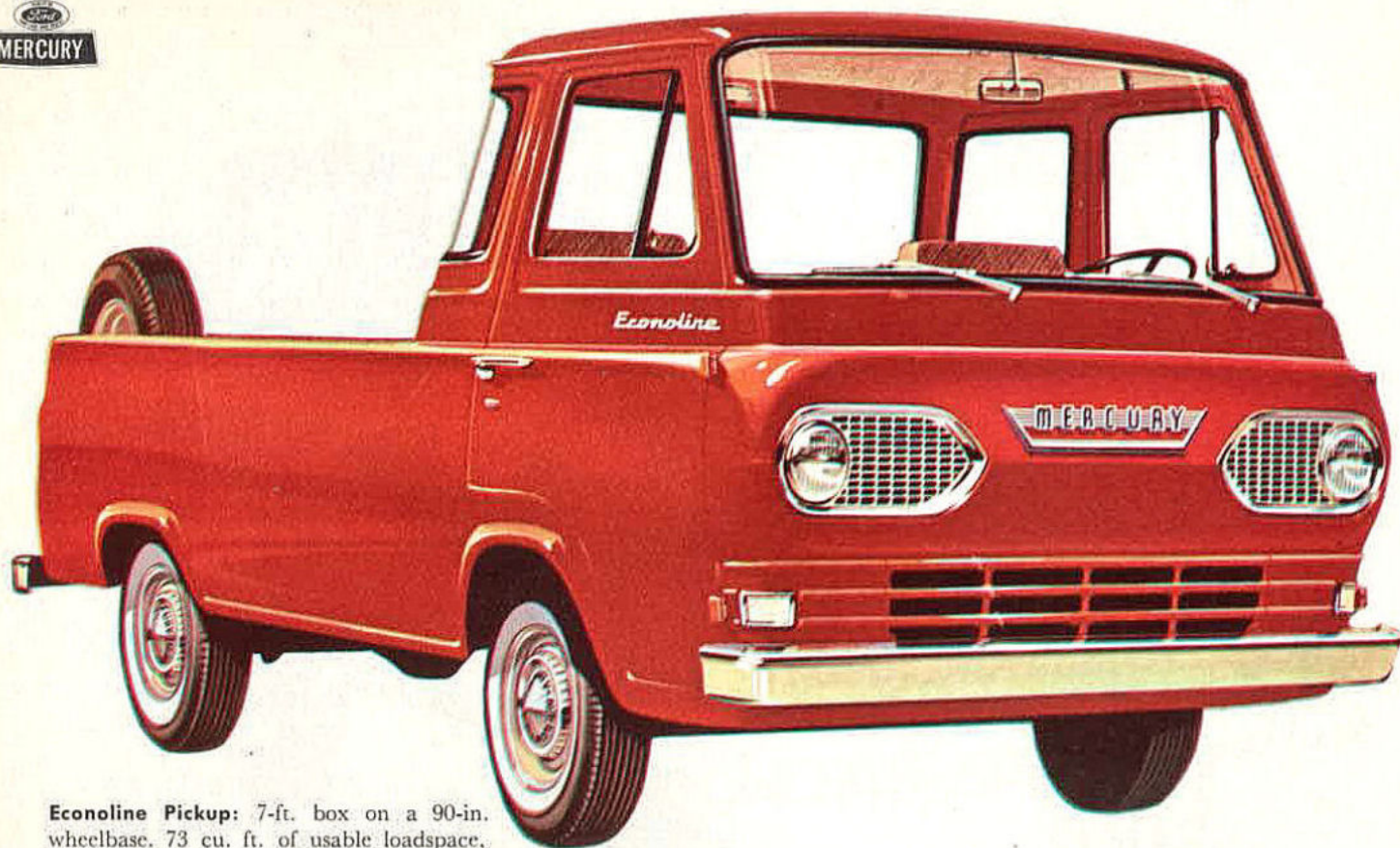


58-hp Thames 4

Brake Horsepower—58 @ 4400 rpm
Torque—91 lbs.-ft. @ 2000 rpm
Bore—3.25 in. Stroke—3.13 in.
Displacement—103.9 cu. in.

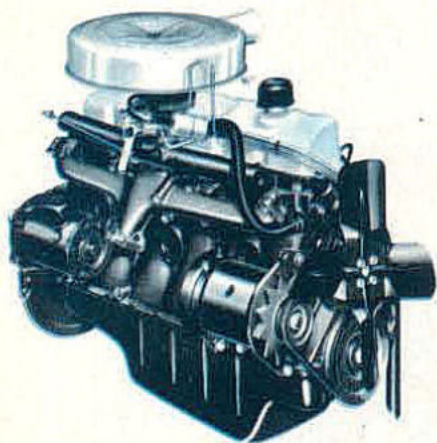


The Thames 800 engine is an economical four cylinder powerplant of "oversquare" design. There's high performance on regular fuel and there's less wear and tear on moving parts. Fuel, oil and air are all completely filter-cleaned for increased engine life.



Econoline Pickup: 7-ft. box on a 90-in. wheelbase. 73 cu. ft. of usable loadspace, 1650-lb. payload, 4,350-lb. max. G.V.W.

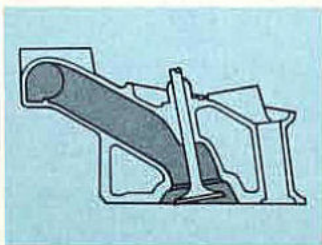
CAB-FORWARD...ENGINE FORWARD FOR MORE LOADSPACE



85-hp 144 Six

Brake Horsepower—85 @ 4200 rpm
Torque—134 lbs.-ft. @ 2000 rpm
Bore—3.50 in. Stroke—2.50 in.
Displacement—144 cu. in.
Optional 101-hp 170 SIX also available.

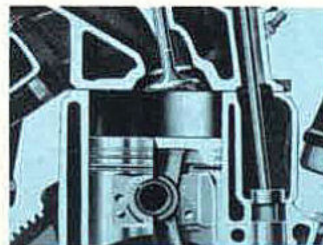
Econoline trucks are built to cut your truck operating costs and give you maximum value and economy on every count. The Econoline Pickup, compared with standard pickups in the "half-ton" class, has 1,050 lbs. less dead weight to carry around. Yet, you haul payload in the "half-ton" class. The engine is up front—so the cargo floor is all flat without annoying rear engine hump.



Integral head and intake manifold is lighter, has fewer parts and provides better fuel distribution and vaporization for exceptional performance and economy.



Single-venturi carburetor has a unique throat water heater to give ice-free operation. This eliminates the need for old-style, troublesome butterfly valve in exhaust manifold.



Wedge-type combustion chambers squeeze that last ounce of power out of every drop of gas. Short Stroke design cuts piston travel, reduces internal friction.

The specifications contained herein were in effect at the time this folder was approved for printing. Ford Motor Company of Canada, Limited, reserves the right to discontinue models at any time, or change specifications or design, without notice and without incurring obligation. Some of the items illustrated or referred to are optional at extra cost.

Ford Motor Company of Canada, Limited

