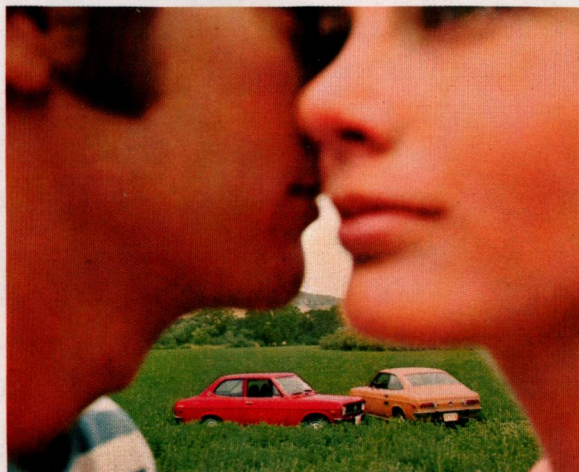


they're really something



**DATSUN 1200'S**



# The Li'l Something 2-Door Sedan

A good looking, highly functional piece of machinery. A car you feel good about owning, good about driving.

The inside is man-sized for Americans. More head, leg and knee room than you'd expect. All-vinyl bucket seats, ash trays front and back. A lot of little extras — all wrapped in a steel unibody for solid protection.

We simply took the ugly out of economy and put the performance in.

The Li'l Something's responsive high-

cam engine revs quiet and easy. Enjoy it at every green light, on every on-ramp.

Front disc brakes deliver the safest kind of stopping.

Do yourself a small favor. Drive the sporty Sedan with the practical trunk. It'll turn you on with big car features. And it'll turn you around in just 27 feet! Thirty miles per gallon economy. And a very small price.

Li'l Something. A step down in cost — a step up in value.





# The Something Special 2-Door Coupe

Wind tunnel tested to do an honest 94 MPH. And resist cross winds that bug most small cars.

Now it does its bit for Urban Renewal. For Ecology. For Mobile America.

Cross-town or cross-country, the Something Special is agile, handsome, tough. Zooms to 60 in just 14.8 seconds. Turns in a tight 27 feet.

The front buckets recline. Back seat folds down. You can load from two wide-

swinging doors. Or flip up the trunk lid and slide your matched set of clubs in from the rear.

Versatility? It's a Shopping Cart. An Overnighter. A Baby Buggy and a Carry-All. A Commuter. It's a Multi-Car—something special for just about everybody.

Shape up your budget, your driving fun. The Something Special costs just a little more than the Li'l Something. A lot less than you'd guess.



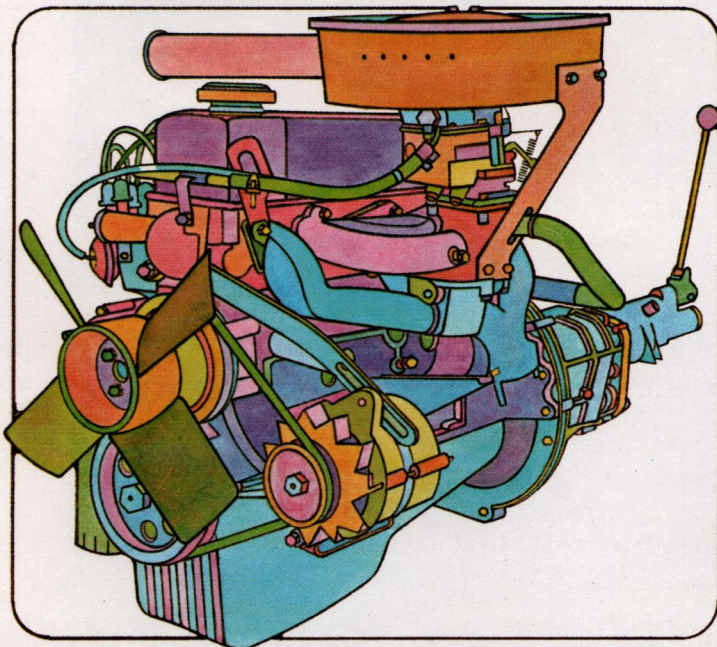


# The Datsun 1200's are really something!

## **All That Class—All That Economy**

How in the World Does Datsun Do It? With extra engineering. Artful styling. And long, long experience. Nearly 40 years designing and building nothing but rugged, potent, economical cars.

## **About 1 HP Per Cubic Inch**



The 1200's hyper-efficient high-cam engine gets its 69 horses from just 71.5 cubic inches. It's internally modified for maximum emission control

All-synchromesh, it "snicks" in gear quick and sure. Puts you in complete charge with a flick of the wrist.

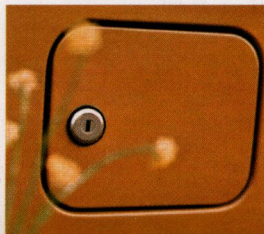
## **Datsun Dashes**



As in all Datsuns, the dashboard proves that functional can also be beautiful. Handsome instruments communicate fast (tach optional).

Safety engineered controls, including those for the heater/defroster, 2-speed wipers and washers, and optional radio, are an easy reach. Of course, there's a steering wheel lock on the safety collapsible steering column. A persistent buzzer warns you not to leave your keys in the car.

## **No Fueling Around**

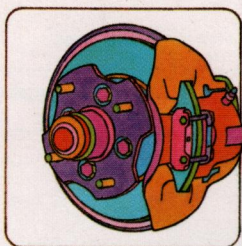


At up to 30 miles to the gallon you won't use your locking gas cap often. Without your knowledge, no one else is likely to either. It's



happy and responsive past 3,000 RPM. Strong on hills and freeway ramps. So easy on gas you can cruise up to 300 miles on ten gallons. The torque comes on at 3,600 RPM—traffic power! And just 23 pounds of car weight per horsepower means easy running, low maintenance, and great performance.

### Stop It!



Front disc brakes—up where 80-85% of the braking action is. From freeway speeds these mighty binders stop the Sedan and Coupe

straight and sure. Repeatedly without fade. And they're puddle-proof, immune to water and soggy brake pedal. Coupled with rear drums and tandem type master cylinder, they call the quickest halt with the greatest margin of safety.

### Sporty and Practical

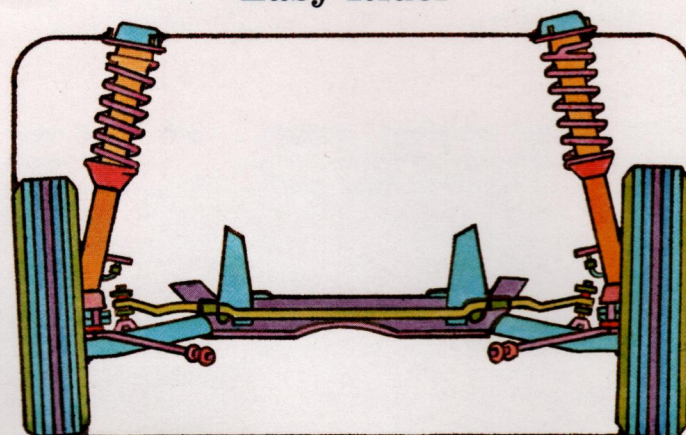


That's what the Li'l Something Sedan and Something Special Coupe are. Likewise their buttery-smooth 4-speed stick shift. Its

racing heritage shows in its short, precise throws. In its perfect matching with the engine's perky torque curve.

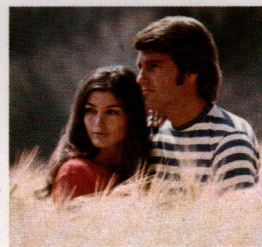
a luxury touch like whitewalls, such seat ash tray, bumper guards, and the Coupe's deep pile carpet. Another little something extra you get as standard equipment.

### Easy Rider



The 1200's suspension—independent strut type up front; semi-elliptic rear leaf springs. Ideal for multi-purpose machines this size and weight. Stable, sure-tracking for comfort and roadability.

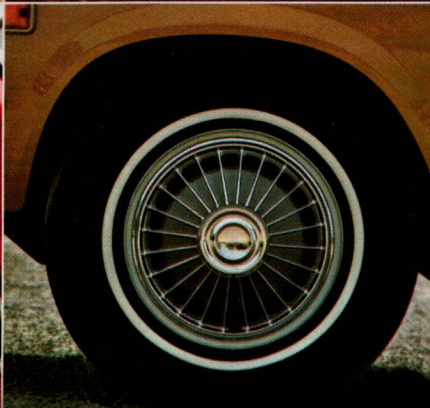
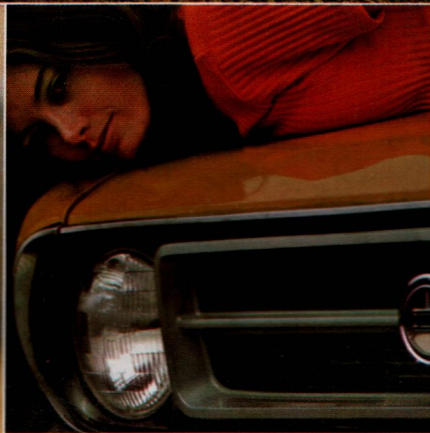
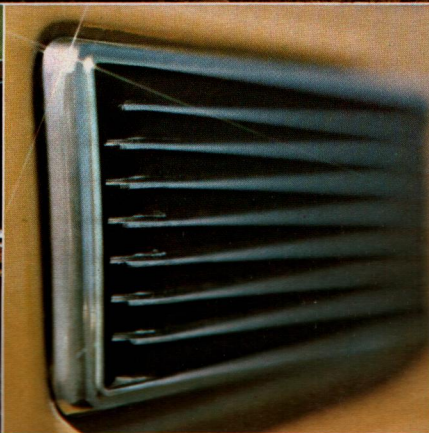
### Tender Loving Care



The 1200's—four years in development. Three million miles of testing. Datsun builds experienced cars. Over-achievers that set a new standard in the lowest priced field. Parts and service everywhere. Over 1000 dealers in the U.S. and Canada.

**DATSUN** 











## Datsun 1200 Specifications

	Something Special 2-Door Coupe	Li'l Something 2-Door Sedan
--	-----------------------------------	--------------------------------

### Dimensions

Wheel Base . . . .	90.6" . . . .	90.6"
Length . . . . .	152.0" . . . .	152.6"
Width . . . . .	59.6" . . . .	58.9"
Height . . . . .	53.1" . . . .	54.7"
Weight . . . . .	1609 lb. . . .	1587 lb.

### Performance

Max. Speed . . . . .	94 mph.	94 mph.
Min. Turning		

Diameter . . . . . 27 ft. . . . . 27 ft.

**Engine** . . . . High-Cam, Water-cooled,  
OHV, 5-Main-Bearing

Displacement . . . . . 71.5 cu. in.

Horsepower . . . . . 69 at 6000 RPM

No. Cylinders . . . . . 4

Compression ratio . . . . . 9.0 to 1

Bore & Stroke . . . . . 2.87 x 2.76

**Wheels & Tires** Steel disc wheels;  
tire size: 600-12 tubeless, whitewalls.

**Brakes** Hydraulic brakes with tandem type master cylinder. Front: disc brakes. Rear: Drum, leading and trailing type. Parking brake mechanically operated on rear wheels.

**Electrical System** 12 volts, 50AH battery, 33A alternator.

**Steering** Recirculating ball type. Gear ratio: 15 to 1.

**Clutch** Single dry disc with diaphragm type, hydraulic control.

**Transmission** All-synchromesh 4-speed, manual floor shift. Gear ratios: 1st 3.76, 2nd 2.17, 3rd 1.40, Top 1.00, Rev. 3.64.

**Fuel System** Two-barrel, down-draft type carburetor, mechanical type diaphragm fuel pump. Paper element type air cleaner with hot air system, fuel tank capacity 10.0 gal. (Coupe), 10.6 gal. (Sedan).

**Emission Control** Engine modification system (no air pump).

**Cooling System** Pressurized radiator, belt drive fan and centrifugal water pump with thermostat.

**Front Suspension** Independent strut type with coil springs, tension rods, telescopic shock absorbers with stabilizer.

**Rear Suspension & Axle** Semi-elliptic leaf springs with shock absorbers, semi-floating rear axle, hypoid type final gear. Gear ratio: 3.90:1.

**Instruments and Controls** Speedometer. Combined water temperature gauge, fuel gauge, oil pressure warning light. Ignition warning and parking brake warning lights. Turn signal lights. Wiper and washer switch. Choke knob, cigarette lighter. Light switch, turn signal and dimmer switch, 4-way flasher

switch. Ignition key with steering lock, heater control knobs, glove box.

**Body and Interior** All steel unibody construction. Tinted safety glass (Coupe). Safety glass (Sedan). Carpet on tunnel. Vinyl floor mat. Seat belts, reclining front bucket seats (Coupe), bucket seats (Sedan). Fold-down type rear seat (Coupe). Two speed anti-lift wipers with washers. Ash trays front/back. Sun visors, arm rests, coat hanger. Inside rear view mirror, outside door mirror. Heater/defroster. Dual horns. Locking gas cap.

**Optional Equipment (At Dealer)** 155 SR-12 radial tires, console box, rear assist strap, carpet, radio, radio with stereo, clock, tachometer, exhaust tube finisher, heel mat, roof rack, ski rack, fancy wheel covers (Sedan). Continuing advances in Datsun design and engineering technology require that specifications and prices be subject to change without notice.

**Drive a Datsun, then decide.**

