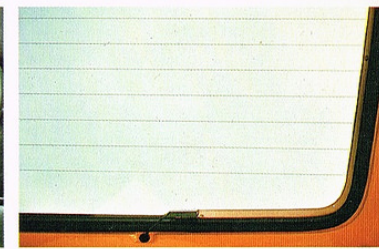
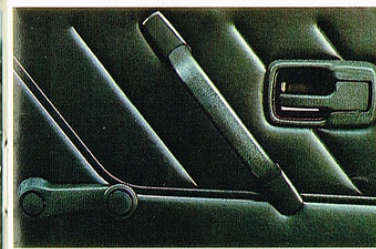
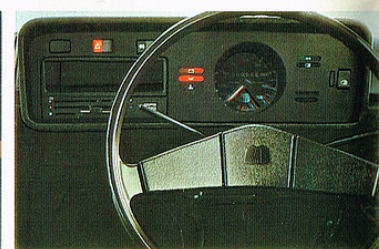
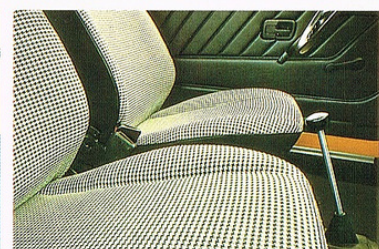


***GOLF***





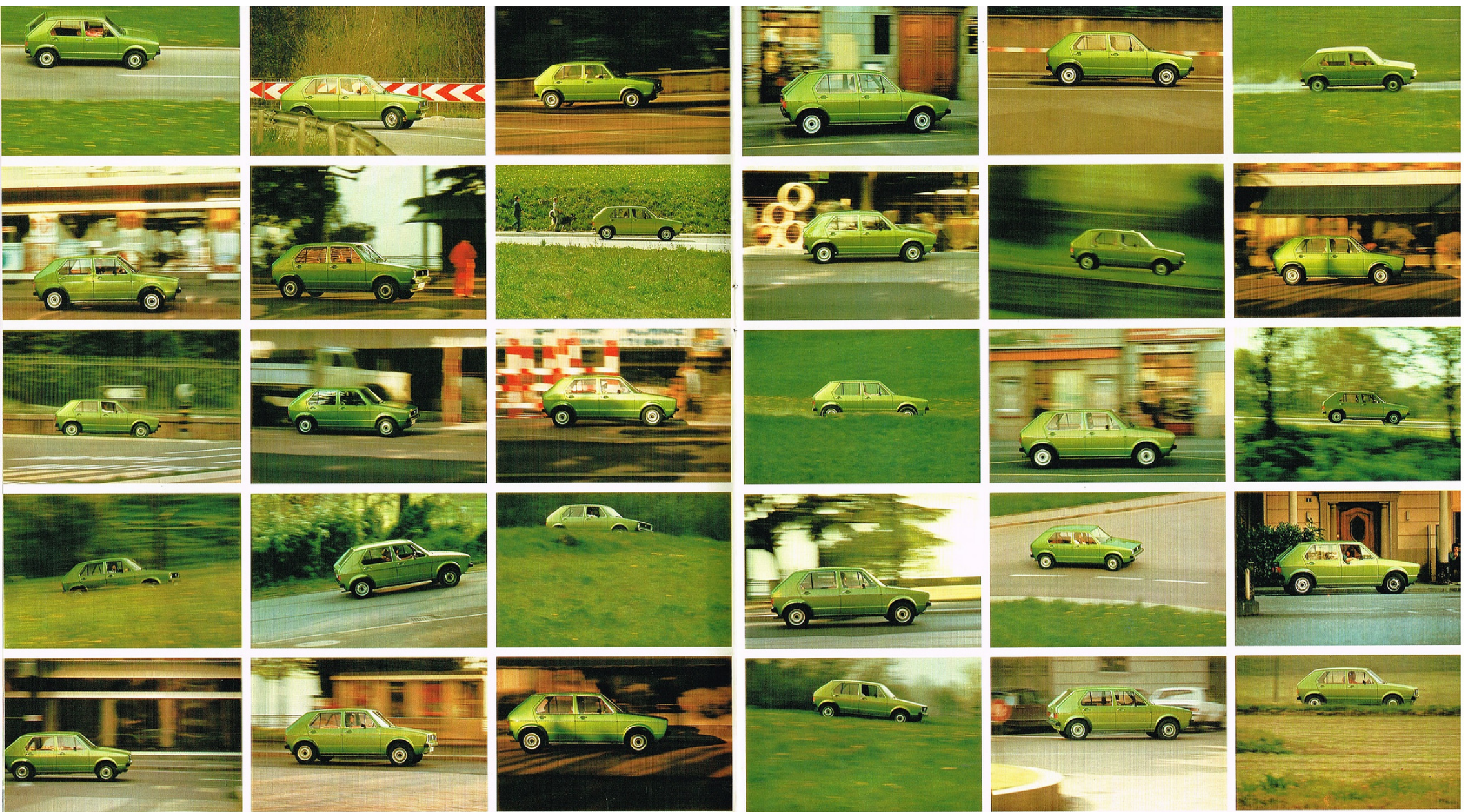
## The Golf. There's more inside than meets the eye.

The Golf brings family motoring down in size. To just 12'2" by 5'4". Inside it's a full four to five seater. But outside it's compact. Instead of an overhanging boot, the Golf has a neatly cut-off tail. And tailgate. And instead of a long bonnet, it has the space saving front of a transverse engine layout.

You can order the Golf with 3 or 5 doors. 1100 or 1600 engines. With either standard or luxurious L trim.

Above, the start of the range is illustrated. The 3 door 1100 Golf. On top of all the deep down qualities of a VW, it sports sculptured sports wheels with radial ply tyres, trendy checkered seating, a highly equipped dashboard, neat door pulls, a heated rear window, front and rear spoilers and reclining front seats.

So. Short as the Golf is, you go short of nothing.



## Golf trips are fast with an economical return.

Today's crowded city streets and busy highways demand more sensible cars. So does the rising cost of petrol. There's no more sensible car than the Golf. Outside it's small enough for city use (it turns in a circle of just 33.8ft). But inside it's big enough to take a family of five on a holiday's motoring.

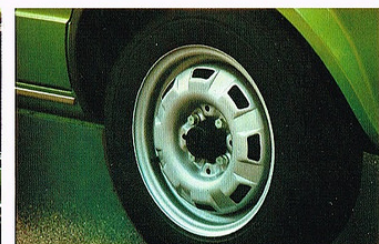
1100 and 1600 engines are the option. Both quick off the mark. With 0-50s of 10.5 and 8.0 seconds respectively. And both offer above average top speeds.

87mph in the 1100, 102mph in the 1600.

Because both engines are efficient in action, economy is a Golf strong point too.

The 1600 will travel 33 miles on a gallon (DIN). While the 1100 version gives a touring consumption of over 35 mpg (DIN).

The Golf economises on maintenance too. With 10,000 miles between major services.



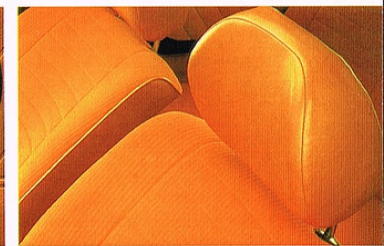
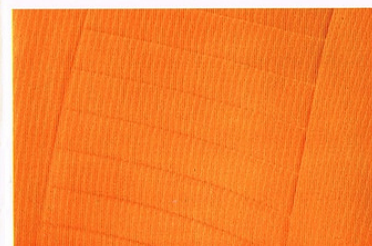
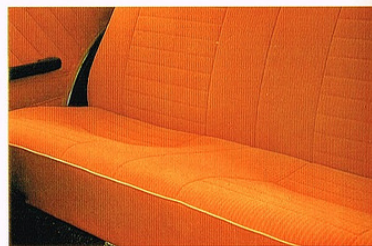
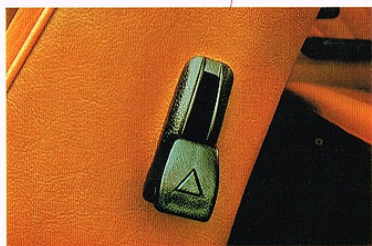
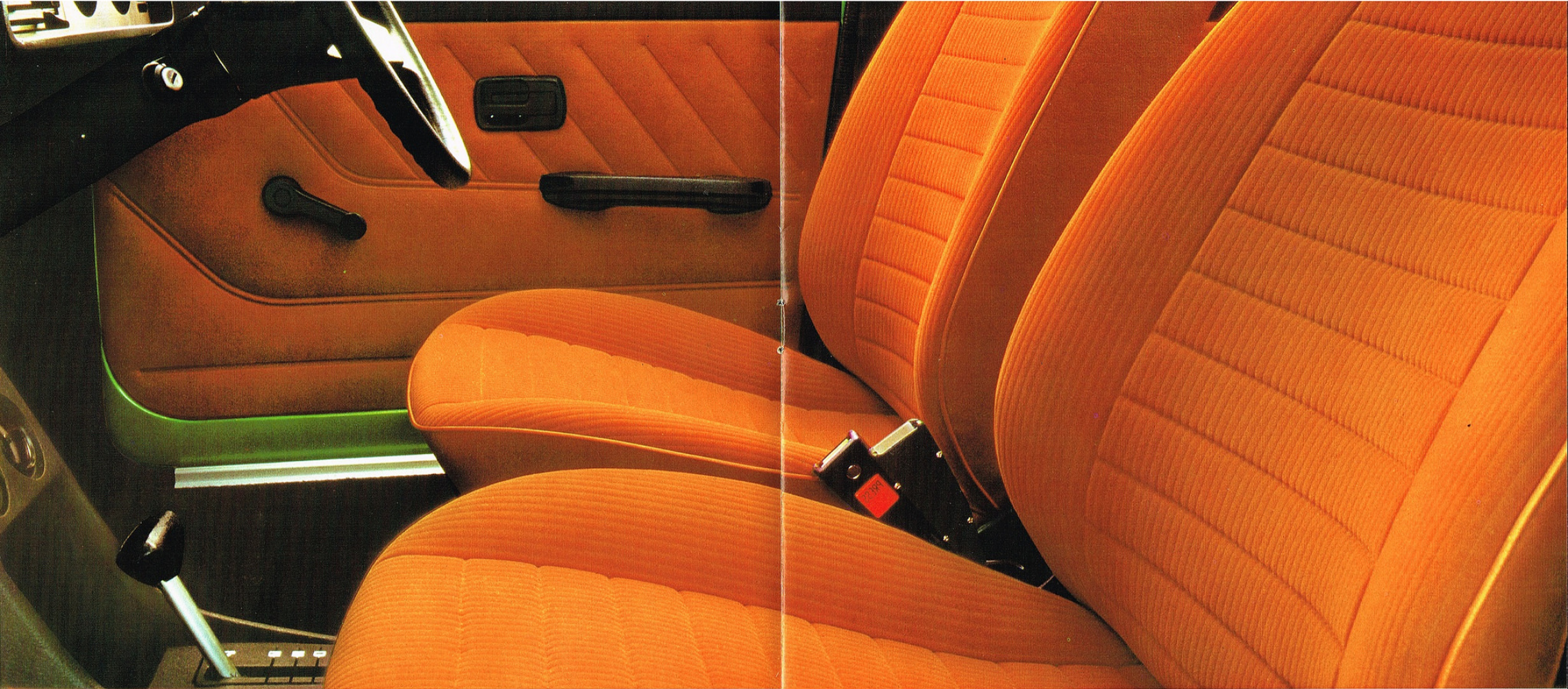
## Golf equipment is an extra attraction.

Illustrated above is the LS model, equipped with luxury trim and the larger 1600cc power unit. Although the standard model is fully equipped, the L and LS models offer a lot more.

From the outside, some of the extra items are obvious, like chrome instead of matt black trim and neat rubber strips set into chrome plated bumpers. Inside you'll find cord upholstery with wall to wall carpeting, a cigarette lighter, an electric

clock and a central instrument console. There's even a pneumatic retention mechanism for the opening rear tailgate. And to make your drive more sporty, we've added a rev. counter to the 1600cc LS models.

For the full story of the equipment included in the L package take a look at the specification pages at the back of this brochure. Whichever Golf you end up choosing, you can be sure you'll get a great deal.



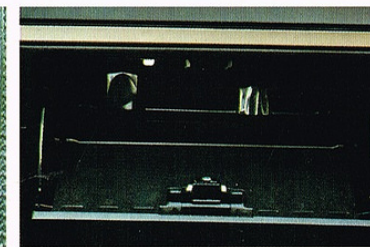
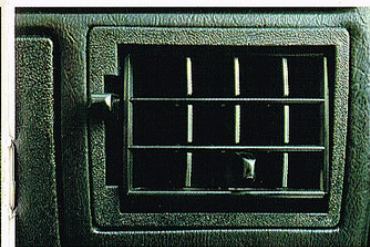
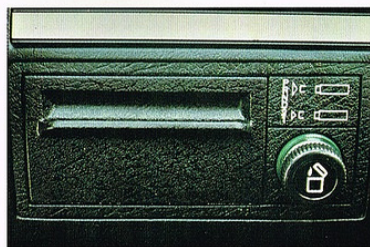
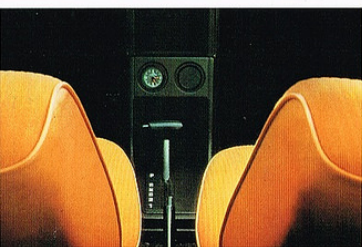
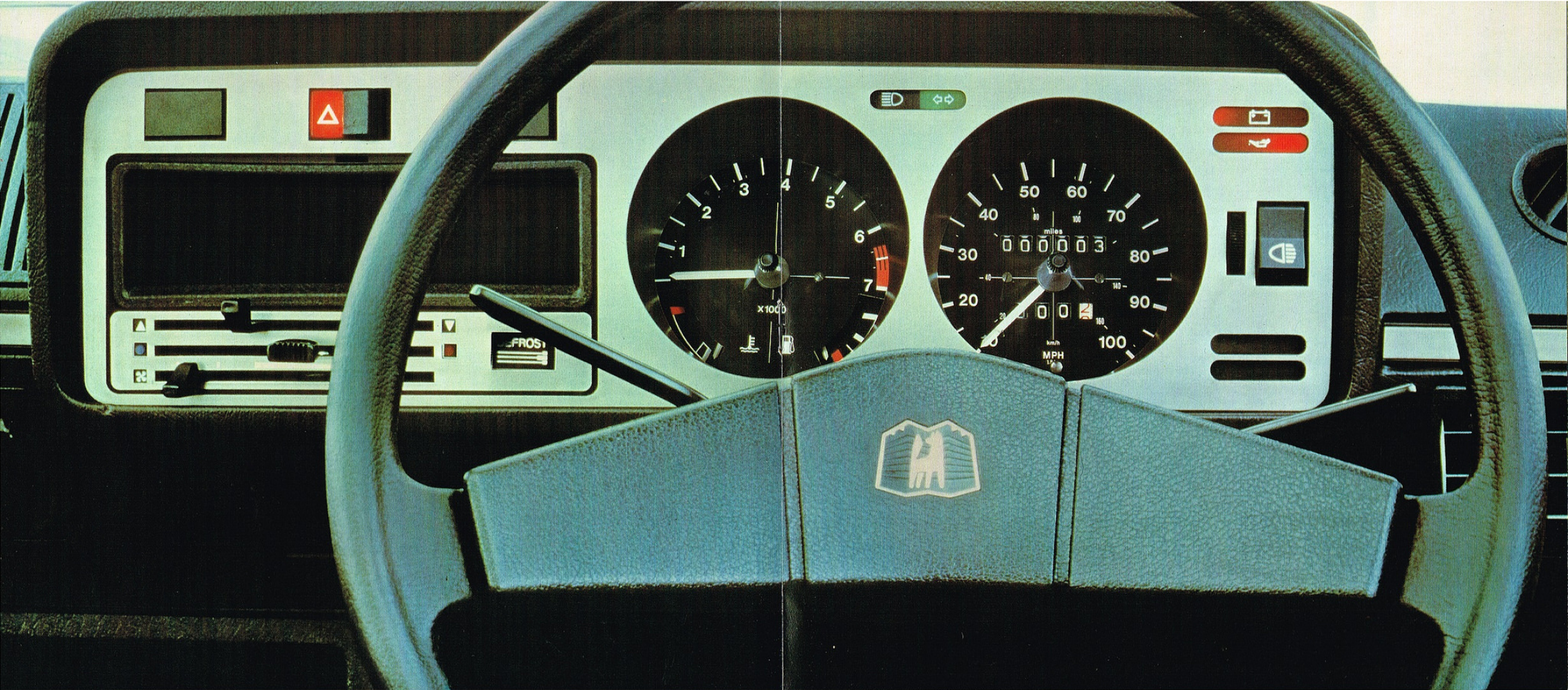
## The Golf lets you journey in space.

Inside, the Golf is such a spacious car that even motoring journalists sit up and take notice. Leg, shoulder and headroom is remarkable, both front and rear. The transverse engine layout means less room for components and more room for occupants. Here's how much:

The passenger compartment measures a full 6'7", from the driver's pedals to the rear passengers' backrest. Shoulder to shoulder, it's 4'4" wide. And there's over 3'0" of headroom. Back to front it's great

too, allowing rear seat passengers over 3'3" of room to stretch their legs as front seat passengers do. But it's not just the space inside the Golf that's a comfort.

We realise no two people are quite the same shape, so the front seats adjust and recline, for leg length and backrest angle. What's more, Golf seats are well upholstered and body contoured, to hold you through the tightest bends. And they are all trimmed in cloth, either Cognac or Black, to keep you cool in summer and warm in winter.



## The Golf improves your drive.

When you drive a Golf you've got your hands on a great car. The LS above is best equipped to illustrate the point. With a sporty cushioned wheel. A modern dashboard with a large rev. counter. And a central instrument console incorporating an electric clock. On every Golf model you have, at the flick of a steering

column stalk, two speed wipers, electric washers and headlamp flashers. For climatic conditions, there's an easily operated flow-through heating and ventilation system with many outlets, including special side defroster vents.

Technically, all Golfs have fine features that set them above other cars on the road. The handling of front wheel drive and wide track. The safety of a large glass area and "crumple zone construction." The unique stabilised steering and braking system which helps to keep you in line, if a tyre skids or bursts at speed. And

an advanced suspension system which stops bumps from being passed from wheel to wheel. In action, the Golf shows off all these hidden virtues to the best effect. Get your hands on a Golf and let it improve your drive.



## The Golf. An attractive saloon and a practical estate.

If you're sold on the Golf's economy and features but need an estate, take a look at that wide, up-swinging tailgate.

It lets you handle all but the biggest loads quickly and easily.

When you're four up you have space for over 12 cubic feet of luggage. That space lies below a neatly hinged luggage compartment cover, so that valuable

goods are kept out of sight.

This flips down when the back seat is folded to make nearly 25 cubic feet of space available for use.

If you need the capacity to carry even more, fit a driving mirror to the passenger door and load the 47.5 cubic feet to the roof.

Whether you have big dogs, a bulky hobby or a long holiday ahead, you'll find the Golf most accommodating.



## Owning a Volkswagen has always had its advantages.

### Volkswagen Quality

Only the best materials and top craftsmanship go into our cars. We employ thousands of inspectors to make sure of it.

Such care and attention ensures that each and every VW is reliable, economical, inexpensive to maintain and high on resale value.

### Volkswagen Warranty

The quality of our craftsmanship and materials gives us confidence enough to cover all our cars with a 12 months unlimited mileage warranty.

### Volkswagen Service

Our service is one of the most comprehensive and best in Europe.

Replacement and exchange parts are reasonably priced. And quickly obtained.

Repair times are short. And service intervals are long. (The Golf only needs a major service every 10,000 miles).

And most VW dealers offer the unique computer diagnosis system.

### Volkswagen Insurance

Your local VW dealer won't just supply your car. He can provide the insurance cover for it as well.

On reasonable terms and without much formality, from VW's own insurance service (VIS).

### Volkswagen Finance

To round it all off, finance can be arranged for you through Volkswagen Finance, part of the Auto Union Finance Company. Ask your Volkswagen dealer for details. And remember, both Finance and Insurance services are just as reliable as our cars.





## The Golf International.

The Golf is already displaying world-class form. Its hidden virtues are clearly being appreciated by people in many different nations, and its reputation for reliable, safe and economical motoring is rapidly growing. The Golf's attractive and crisp styling is appealing to drivers of all ages and from all walks of life. The design and performance of the Golf make it a pretty individual car. But its owners are making it more so.

They each devise their own form of Golf. By choosing the engine — either 1100 or 1600cc, the body style — 3 or 5 doors, equipment — standard or luxury trim, and exterior colour/interior upholstery combination to suit themselves. And by opting for factory fitted extras, such as automatic transmission, a sunroof, tinted glass, head restraints and alloy wheels. And by adding items like a radio or tape player, from the range of VW accessories at their local dealer.

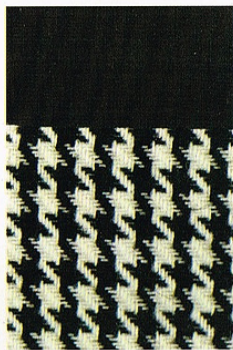
# Golf Colours—to suit every taste.

## Cloth upholstery for Golf



cognac

01



black-white

29

## Cloth upholstery for Golf L/Golf LS



cognac

17



lava black

84

This brochure is intended to show the general appearance of the VW Golf. Many of the illustrations show equipment which is not to U.K. specifications, or is available only on special order.

Please refer to the last pages of the brochure for exact details of the Golf.

Due to a continuous process of modification by the Manufacturer some changes in specification may occur after the publication of this brochure.

Kindly refer to the back page for up-to-date amendments to specifications and please confirm these with your authorised Volkswagen Dealer at the time of placing your order.

All the power output and fuel consumption figures shown in this brochure are to the DIN standard. A specification of the fuel consumption standard is given on page 19 of this brochure.

Colour and upholstery chart for the VW Golf

Colour and Upholstery Combinations	Exterior colours	Golf								Golf L/Golf LS																			
		rally yellow	marino yellow	phoenix red	senegal red	ocean blue	lofoten green	cliff green	atlas white	viper green metallic*	silver diamond metallic*	rally yellow	marino yellow	phoenix red	senegal red	ocean blue	lofoten green	cliff green	atlas white	viper green metallic*	silver diamond metallic*								
Cloth	cognac	—01																											
	black-white	—29	shaded																										
	cognac	—17																											
	lava black	—84																											

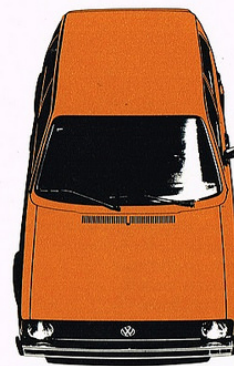
\* metallic paints at extra charge.

## Exterior colours



rally yellow

D7—



marino yellow

E6—



phoenix red

G5—



senegal red

G9—



ocean blue

J4—



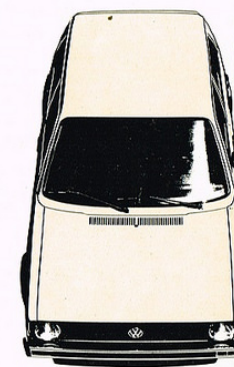
lofoten green

M2—



cliff green

N7—



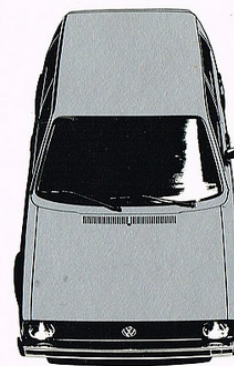
atlas white

R3—



viper green metallic

Y5—



silver diamond metallic

Z4—

\*Print processes do not allow exact reproduction of colours. This applies to the exterior colours as well as to the upholstery.

# Golf Models—to meet every need.

## Technical Specifications and Equipment.

### Engine:

Four cylinder in line with 1.1 or 1.6 litre capacity, transversely mounted in front. 1100cc unit inclined forward, 1600cc inclined backwards. Single overhead camshaft with toothed belt drive. Water cooling with thermostatically controlled fan. Downdraught carburettor with automatic choke.

	Golf/Golf L	Golf LS
Capacity:	1093cc	1588cc
Bore and Stroke:	69.5 x 72mm	79.5 x 80mm
Compression ratio:	8.0: 1	8.2: 1
Max. Output (DIN):	50bhp at 6000 rpm *37kw at 6000 rpm	75bhp at 5600 rpm 55kw at 5600 rpm
Max. Torque (DIN):	55.3 lbs.ft. at 3000 rpm *79Nm at 3000 rpm	82 lbs.ft. at 3200 rpm 119Nm at 3200 rpm
Battery:	12 volt 36 amp.hr. Charged by 35 amp alternator	12 volt 36 amp.hr. Charged by 35 amp alternator

\*New International Units for technical measurements:

Old Unit	New Unit	Ratio
Output bhp	kw (kilo watt)	1 bhp = 0.746kw
Torque lb.ft.	Nm (Newton meter)	1 lb.ft. = 1.36Nm

### Transmission:

Gearbox, differential and double jointed drive shafts all combined in a compact transversely-mounted front drive unit. Manual: Gearbox: All synchromesh four speed gearbox mounted transversely.

Clutch: Dry single plate clutch.  
Overall ratios: with 1100cc engine: 1st 3.45, 2nd 2.05, 3rd 1.35, 4th 0.96, Rev 3.38  
with 1600cc engine: 1st 3.45, 2nd 1.94, 3rd 1.37, 4th 0.97, Rev 3.17  
Final drive ratio: with 1100cc engine: 4.57  
with 1600cc engine: 3.9

Automatic: Three stage automatic gearbox with three driving ranges and reverse available as an optional extra on Golf LS Models.

### Suspension:

Front: Independent suspension with struts, lower wishbone and telescopic shock absorbers.  
Rear: Independent suspension with torsion beam trailing arm axle and telescopic shock absorbers.

### Steering:

Maintenance — free self adjusting rack and pinion steering. Incorporating negative roll radius.  
Turning circle: 33.8 ft.

### Brakes:

Diagonal dual circuit system on all models with brake servo assistance on the LS.  
Front brakes: 9.4 ins diameter discs. Rear brakes: 7.1 ins diameter drums.

### Tyres:

Radial ply: 145 SR — 13 on 4½J rims on Golf/Golf L  
Radial ply: 155 SR — 13 on 5J rims on Golf LS

### Performance:

	Golf/Golf L	Golf LS
Top speed:	87 mph	102 mph (98 mph)
Acceleration (secs)		
0 — 50 mph	10.5	8.0 (9.4)
0 — 60 mph	16.5	12.3 (13.7)
Fuel consumption (DIN)*	35.2mpg	33.2mpg (31.3mpg)
Under good conditions:		
At a steady 50 mph	51.3mpg	47.8mpg (44.1mpg)
60 mph	41.5mpg	40.2mpg (37.6mpg)

(Figures quoted in parentheses apply to automatic transmission available on LS models only)

\*DIN STANDARD — with half permissible load at ¾ max. speed plus 10% (but not above 70 mph)

### Weights: (lbs/kg)

	Golf/Golf L	Golf LS	Automatic
Kerb weight:			
2 door	1654/750	1720/780	1775/805
4 door	1709/775	1775/805	1830/830
Max. payload:			
2 door	992/450	992/450	980/445
4 door	937/425	937/425	925/420
Max. gross weight:	2646/1200	2712/1230	2755/1250
Permissible axle loads:			
Front:			
2 door	1345/610	1414/640	1455/660
4 door	1345/610	1414/640	1455/660
Rear:			
2 door	1322/600	1322/600	1322/600
4 door	1322/600	1322/600	1322/600

### Capacities:

	Golf/Golf L	Golf LS
Max. Towing capacities	(lbs/kg)	(lbs/kg)
Trailer braked:	1764/800	2205/1000
Trailer unbraked:	882/400	882/400
Fuel tank:	9.9 gallons/45 litres	
Engine oil:	5.5 pints on 1093cc, 6 pints on 1588cc.	
Manual gearbox:	2.2 pints	
Luggage capacity:		
With back rest up:	12.4 cu.ft.	
With back rest down:	24.7 cu.ft.	
With back rest down and luggage to the roof:	47.5 cu.ft.	

### Dimensions: (inches)

External:  
Length: 146, Width: 63.4, Height: 55.5, Wheelbase: 94.5, Track front/rear: 54.7/53.1, Minimum ground clearance at permissible total weight: 5.3  
Internal:  
Front seat depth/back height: 19.5/22.0, Headroom: front seat/roof: 37.4, rear seat/roof: 35.4, Rear seat width/back height: 46.0/18.0, Width at shoulder height front/back: 51.4/51.0, Rear seat legroom: 39.4

### Safety Features:

All steel body with "safety cell" passenger compartment. Impact absorbing front and rear crumple zones. Safety steering wheel. Collapsible steering column. Stabilised steering/braking system incorporating negative roll radius. Front disc brakes. Diagonal dual circuit braking system. Brake servo assistance on 1600cc models. Child safety locks on rear doors. Hazard warning lights. Breakaway safety rear view mirror. Padded instrument panel. Good all round visibility.

### Equipment:

The following information provides details on the equipment supplied as standard on the models shown. Please note however that this specification may be subject to change without prior notice. It is therefore recommended that you check with your VW Dealer at the time of ordering, regarding changes that have taken place.

	Golf	Golf L/Golf LS
Underbody protection	x	x
Opening tailgate	x	x
Driver's door mirror	x	x
Rear wheel arch stone guards	x	x
Heated rear window	x	x
Radial ply tyres	x	x
Cloth upholstery	x	x
Electric windscreen washers	x	x
Two speed wipers with flick wipe	x	x
Variable heating/ventilation system	x	x
Fresh air vents on fascia	x	x
Defroster duct below windscreen	x	x
Courtesy light	x	x
Headlamp flasher	x	x
Hazard warning lights	x	x
Oil/water/alternator warning lights	x	x
Two padded sun visors	x	x
Two coat hooks	x	x
Seat belt anchorage points	x	x
Glove box	x	x
Folding rear seat	x	x
Luggage compartment cover	x	x
Dashboard radio aperture	x	x
Dashboard speaker grille	x	x
Dashboard ashtray	x	x
Reclining front seats	x	x
Padded matt black fascia	x	
Brushed aluminium fascia		x
Pneumatic tailgate support		x
Polished metal exterior trim		x
Rubber waistline mouldings		x
Rubber inserts in chrome bumpers		x
Padded steering wheel		x
Lockable glove box		x
Central instrument console		x

	Golf	Golf L/Golf LS
Full carpeting		x
Two speed heater/ventilator blower		x
Passenger vanity mirror		x
Swivel driver's sun visor		x
Rear ashtray		x
Arm rests on all doors		x
Quartz electric clock		x
Temperature gauge		x
Panel rheostat		x
Illuminated heater controls		x
Illuminated switches		x
Trip mileage recorder		x
Cigarette lighter		x
Passenger grab handles		x
Rev. counter		x (LS only)
Tinted glass all round	o	o
Laminated windscreen	o	o
Integrated head restraints	o	o
Adjustable head restraints		o
Alloy sports wheels	o	o
Steel radial ply tyres		o
175/70 SR 13	o	o (LS only)
Automatic transmission		o (LS only)
Steel sliding sunroof	o	o
Rear window wash/wipe system	o	o

x Standard equipment  
o Factory installed optional equipment

### Dealer installed optional extras at extra charge:

Many items of equipment are available on the Golf range and a few are listed below.  
Fog and spot lamps, rear fog lamps, reversing lights, complete radio installation, mudflaps, tow bar, sports road wheels, roof rack, door storage trays, rear window wash/wipe system. Please consult your VW Dealer for full details on the price and availability of equipment and accessories.

**The Golf. Ask for a test drive.**

Printed in Germany. Specifications subject to change without notice 12/75.

583/119.002.25