

1980

The Jetta.





Model illustrated: Jetta GLI

Exciting and stylish — the new Jetta from Volkswagen.

This brochure is intended to show the general appearance of the new Volkswagen Jetta. Certain items of equipment shown in the illustrations are not standard on vehicles for the UK. Please note that for the 1980 model year rear seat belts will not be standard equipment. In addition, all models will be equipped with one rear foglamp. The pages dealing with the summary of specification give exact details of equipment at the time of publication. Please confirm specification with your authorised Volkswagen dealer at the time of placing your order.

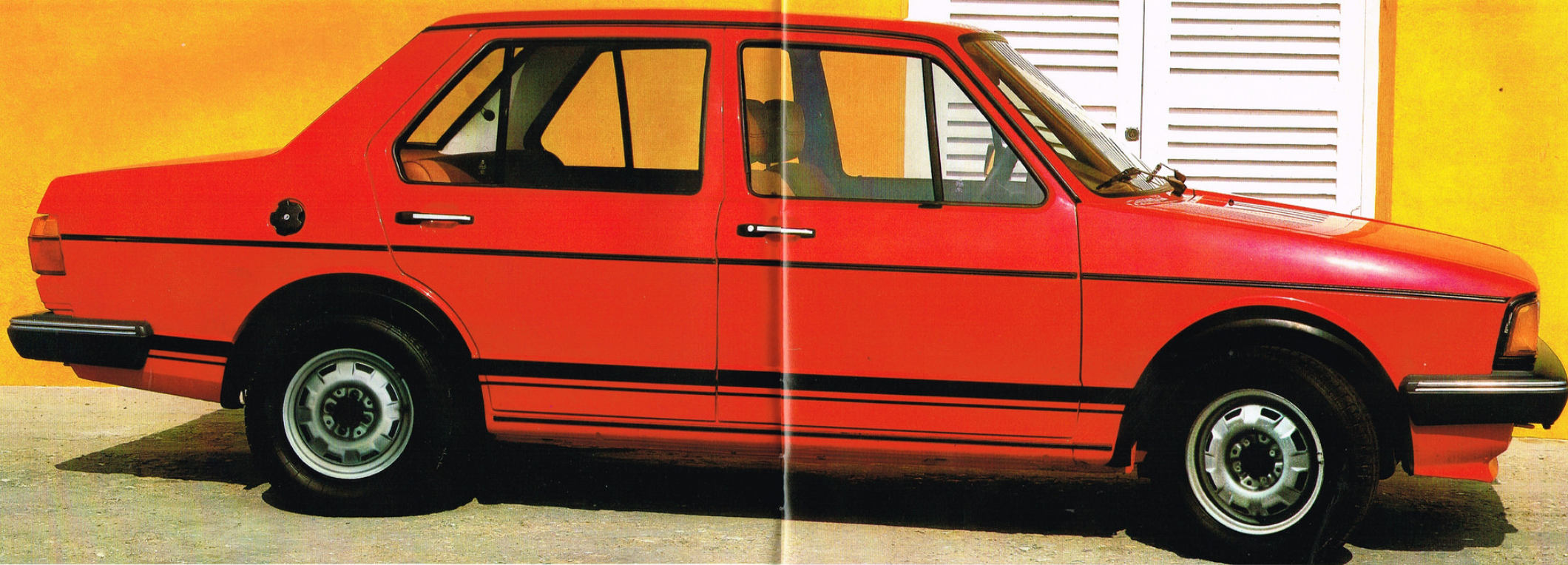
The Jetta is the latest arrival to the Volkswagen range. An attractive, spacious car with four wide-opening doors and an enormous boot that can accommodate over 22 cu.ft. of luggage. Enough for the whole family's holiday needs,

those of the sportsman or, indeed, whatever else you'll need to carry.

Above all — space. Space developed from a wealth of engineering experience that is already one of the hallmarks of the current range of Volkswagens.

The result is a sleek and dynamic car with attractive, aerodynamic lines that makes for quick, economical motoring and positive handling.

Jetta — the new car from Volkswagen.



Model illustrated: Jetta L

From spritely to quick — the Jetta comes with a choice of three well proven engines.

All Jetta engines are mounted transversely in the front. There's a nippy 1300 cc unit which develops 60 bhp and is impressively responsive and gives superbly lively performance. This engine powers the Jetta to 50 mph from standing in only nine seconds and has a top speed of 92 mph.

Or there's the powerful, 70 bhp 1500 cc engine with automatic transmission available as an optional extra. This flexible engine has a top speed of 96 mph in its manual form or 93 mph with automatic transmission. It reaches 50 mph in 8.5 and 9.8 seconds respectively.

Lastly, a Jetta that will always be first in the

field — the 1600 cc fuel injected version developing 110 bhp. Aided by a five speed sports gearbox this high performance Jetta accelerates from 0—50 mph in 6.4 seconds flat and has a top speed of 110 mph.

The 1300 cc and 1500 cc Jettas run on 2 star fuel and the fuel injected version on 4 star.

A choice of three powerful and economical engines, amongst the best proven in their class. And of course, all come standard with the reputation of Volkswagen reliability.



Model illustrated: Jetta LS

Luxury is the new Jetta.

The new Volkswagen Jetta has four wide opening doors, distinctive rectangular headlamps and decorative side stripes. Thick wrap-around plastic bumpers with attractive chrome trim, waistline impact strips and an integral front spoiler not only complete the Jetta's pleasing appearance but are functional as well.

The Jetta is available in two quality trims — the luxurious 'L' trim or, for even greater luxury,

the 'GL' trim.

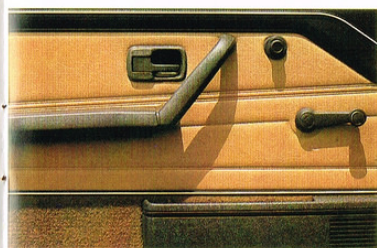
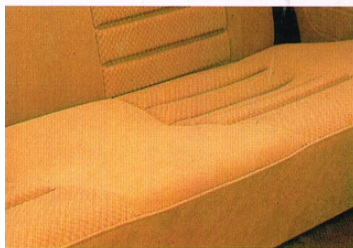
Standard features on the 'L' Jetta include a heated rear window, reversing lights, two speed wipers with intermittent wipe and automatic wash/wipe, a driver's door mirror and a rear foglamp. Halogen headlamps are also standard with the 1500 cc and 1600 cc engines. Inside, fully reclining front seats with adjustable head restraints, quality carpets and cloth upholstery,

a three speed heater blower, a clock and an attractive brushed aluminium fascia to the dashboard.

In addition, the 'GL' trim has bronze tinted glass, a driver's door mirror adjustable from inside the car, large decorative wheel trims and a choice of six attractive metallic colours as well as black. The carpet is of deep pile, extends up the doors and is colour matched to the uphol-

stery. A cigarette lighter, centre console, lockable glovebox, instrument illumination and a panel rheostat are only a few of the special features.

The Jetta GLi with the fuel injected engine, being our very special model deserves very special extras. It comes standard with alloy sports wheels, a rev counter and a laminated windscreen.



Model illustrated: Jetta GL

The new Jetta — a comfortable, accommodating car.

Inside, the new Jetta is comfortable and spacious. Four large doors allow easy access for all occupants and the transversely mounted, compact engine means that maximum interior space is available for the driver, passengers and luggage.

The Jetta's anatomically designed seats have

a special foam padding that absorbs the effects of bumpy roads thus, providing the ultimate in comfortable motoring.

Adjustable head restraints are fitted to the front seats and the backrests are adjustable to any body or any position. Right down to fully reclined.

Comfort that caters for the needs of all the family and leaves them feeling fresh and relaxed on arrival at their destination. And, a three speed fan keeps the atmosphere pleasant at all times — be it hot or cold outside.

Not only can the new Volkswagen Jetta accommodate all the family — it can house the

entire family's luggage as well. It has an enormous boot for a car of its size — 22.2 cu.ft. of available load space.

Even when loaded to the hilt the Jetta's beautiful balanced chassis, with front wheel drive and individual wheel suspension makes it extraordinarily manageable and fun to drive.

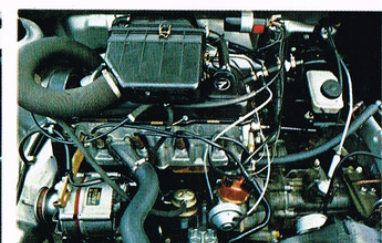
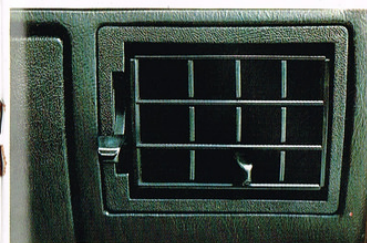
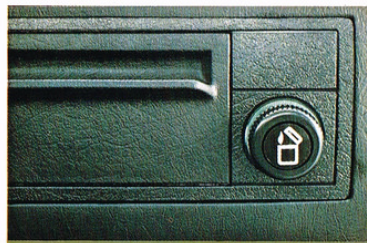
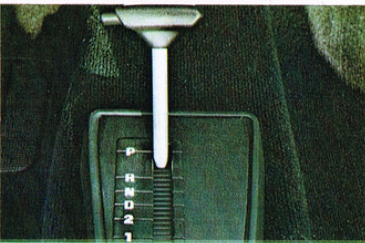
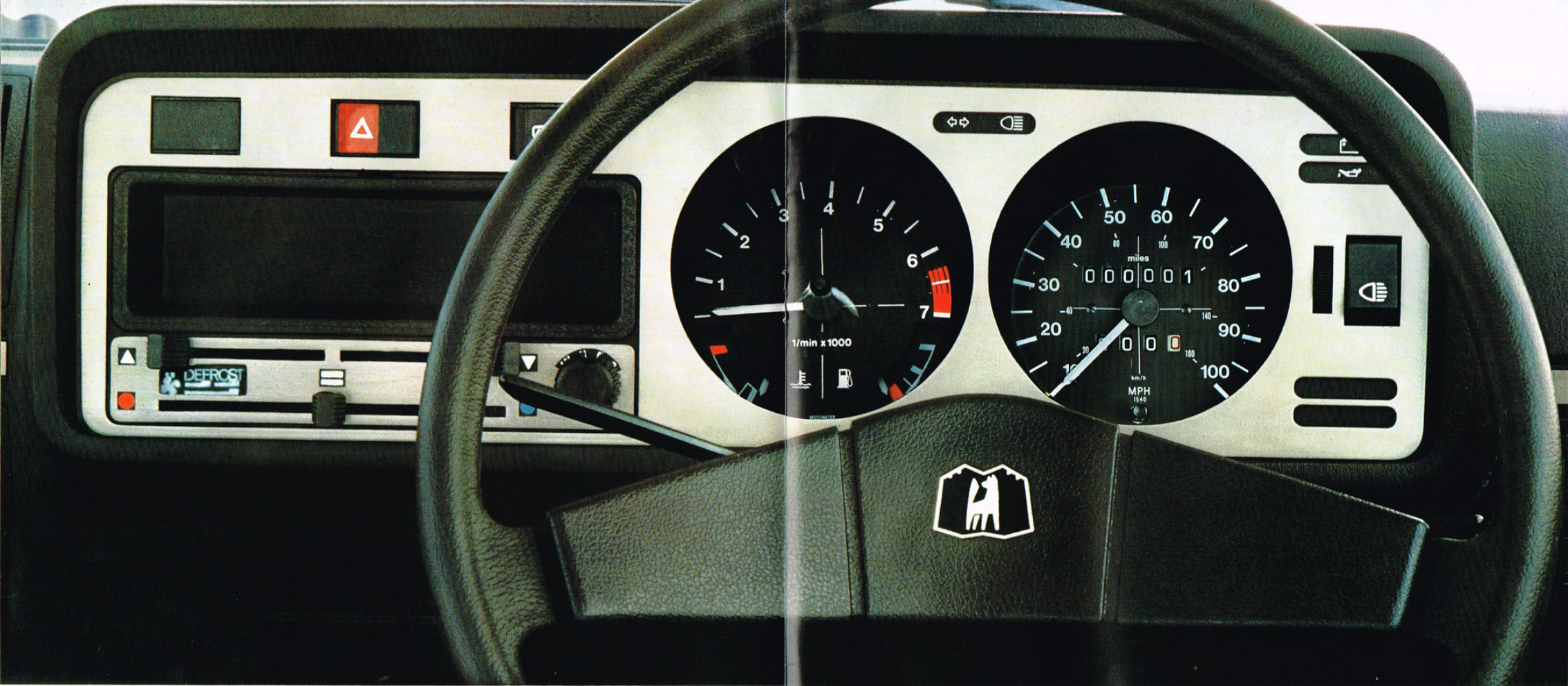


Illustration: Jetta GLI dashboard

Human engineering.

Human engineering is a discipline most car makers talk about but few pursue with the resourcefulness and dedication of Volkswagen.

Take "ergonomics" for example — the design practice of making a car fit you better. Volkswagen ergonomics make it possible for both tall and short people to drive the same Jetta and be

comfortable doing so.

Human engineering finds its way into the smallest detail. The smooth operation of the switches, the way instruments and warning lights are placed so you can observe them at a glance; and the ease of clutch, brake and gear change operation. When you take a new Jetta

for a test drive, there's a very good reason why everything feels so right. It's the result of our human engineering.

The finely adjustable heating and ventilation, with foot and face level vents and a three speed heater blower, keeps the interior temperature pleasant whatever the conditions outside. And

vents at the front and side of the dashboard demist the windscreen and side windows quickly and efficiently.

All these features help to make you the kind of driver that is relaxed but alert, and able to react quickly to unexpected driving situations.

The speedometer shown above registers speeds up to 100 miles per hour. However, actual Jetta GLI speedometer specification is to 120 miles per hour.



Model illustrated: Jetta L

Safety to a high standard.

When you're in the Jetta, be it as a driver or passenger, you can rest assured that you are travelling in a vehicle which has been designed to the highest safety standards.

Volkswagens are renowned for their modern technology and advanced safety features — and the Jetta, being our latest model, is of

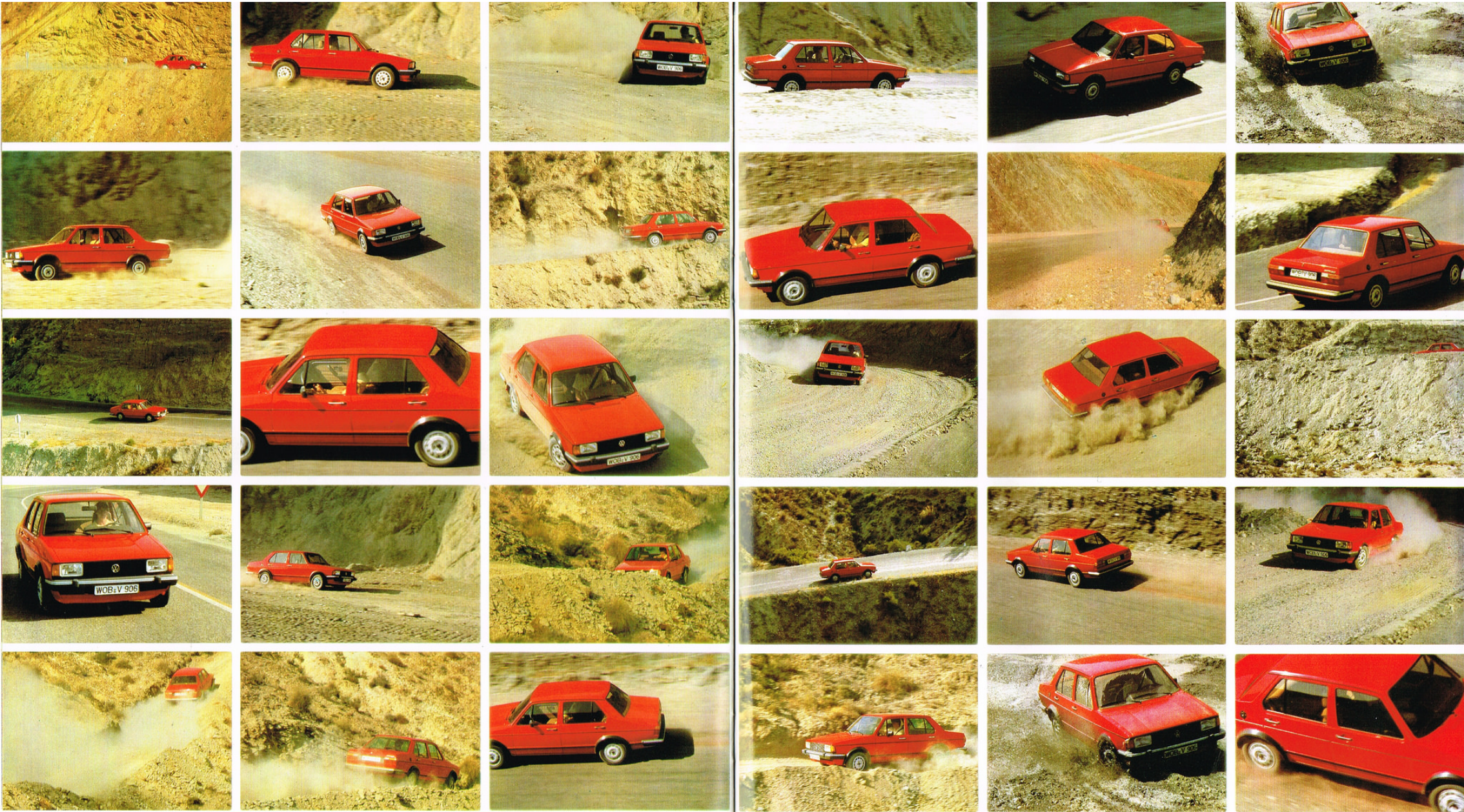
course, our most advanced.

The bodywork is based on a strong floor pan. The front and rear ends are designed to absorb impact energy and the passenger compartment is a steel safety cell which is also well protected at the sides by strengthened doors equipped with safety locks all round and child locks on the

rear doors. Dual circuit, diagonally linked brakes with servo assistance means that the Jetta stops quickly and safely under all circumstances — even if one brake circuit fails.

A further outstanding feature pioneered by Volkswagen is negative roll radius. This self-stabilising steering and braking system keeps

the Jetta on the straight and narrow even if a front tyre bursts or you hit rough ground. This combination of built-in safety features, a well balanced suspension and positive handling give the Jetta driver a feeling of confidence in all weather conditions.



From the Arctic Circle to a crowded town or an open, curvy road the Jetta is at home.

Before offering you the Jetta we tested it extensively under all driving conditions. From the Arctic Circle to the desert, the Jetta was put through its paces. All this with one aim in mind: to guarantee you a car whose performance, handling and reliability are outstanding. Its compact dimensions, small turning circle and

large glass areas for great all round visibility make it easy to manoeuvre in small spaces. Typical of the driving characteristics of the Jetta are the advantages of front wheel drive and the quality of the suspension giving directional stability in side winds and on uneven surfaces. Good acceleration and climbing ability

even on slippery and loose ground. Safe and problem-free behaviour in bends and firm road holding. And the top-of-the-range Jetta GLI has specially prepared suspension, anti-roll bars (heavy duty at the rear), internally ventilated front disc brakes and an oil cooler.

Jetta is the new Volkswagen — a dynamic, sporty car with an attractive appearance and sure-footed handling. A car that brings pleasure to the daily motoring routines. Test drive Jetta. Soon.



The Volkswagen service.

The advanced 1-year warranty with no limit on mileage.

A manufacturer who gives this kind of warranty must be absolutely convinced of the quality of his cars. However, with this warranty we believe we give you more than just proof of quality. We give you the assurance that you made the right choice. For economical, comfortable and safe motoring. The 1-year warranty

has worldwide validity.

The new 6-year body protection warranty.

Volkswagen were the first company to offer a 6-year warranty to cover bodywork corrosion. As with our 12 months, no mileage limit warranty, a manufacturer who gives this kind of warranty is quite sure of the longevity and quality of his product. Special rust-proofing of internal body sections and panels protects against inter-

nal corrosion. This treatment applied at the time of manufacture guards against through-rusting from the inside. Should this occur, rectification will be made free of charge. Naturally, during the Bodywork Warranty period the car must be cared for in compliance with the operating instructions and the bodywork must be checked every two years by an Authorised Dealer.

With this warranty you may be totally confi-

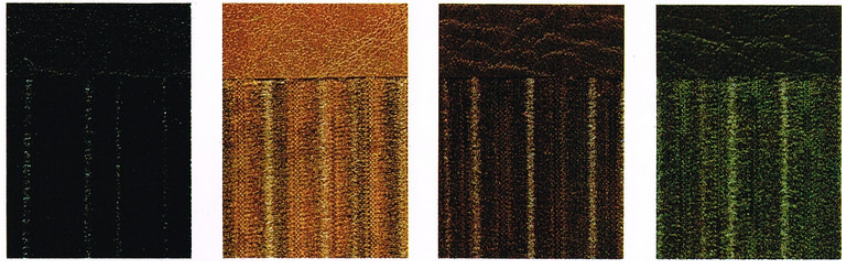
dent that the bodywork of your car is fully protected against any defect in manufacture.

Personal Export.

The Volkswagen service also includes the Personal Export facility which arranges for Overseas, Military and Diplomatic sales of Volkswagen vehicles. For information on this service the Personal Export Centre, 95 Baker St., London W1, should be contacted. (Tel. 01 4868411).

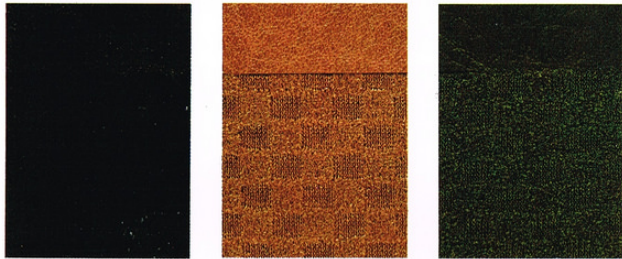
The Jetta. Upholstery and Colour Combinations.

Cloth upholstery for Jetta L (striped)



black - BQ gazelle - BS van dyck - BT ivy - BU

Cloth upholstery for Jetta GL/GLi (honeycomb)



black - CA gazelle - CB ivy - CD

Colour and upholstery combinations		Exterior colours												
Upholstery		lemon yellow	mexico beige	mars red	malaga red	florida blue	alpine white	azores metallic*	indiana red metallic*	inari silver metallic*	canyon metallic*	onyx metallic*	diamond silver metallic*	black
Jetta L														
Cloth black	- BQ													
gazelle	- BS													
van dyck	- BT													
ivy	- BU													
Jetta GL/GLi														
Cloth black	- CA													
gazelle**	- CB													
ivy	- CD													

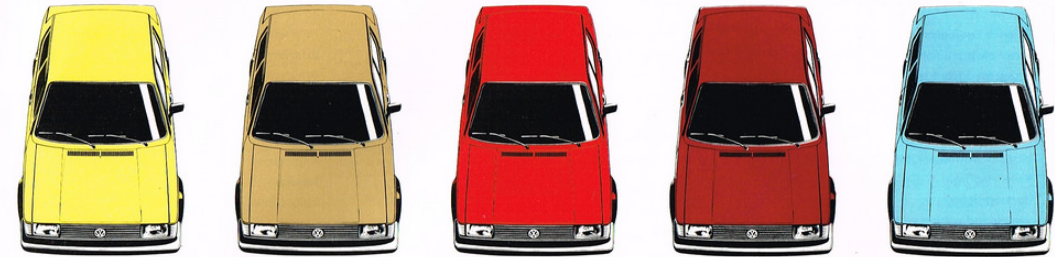
Please note:

* Metallic paints at extra charge (but standard on Jetta GL/GLi).

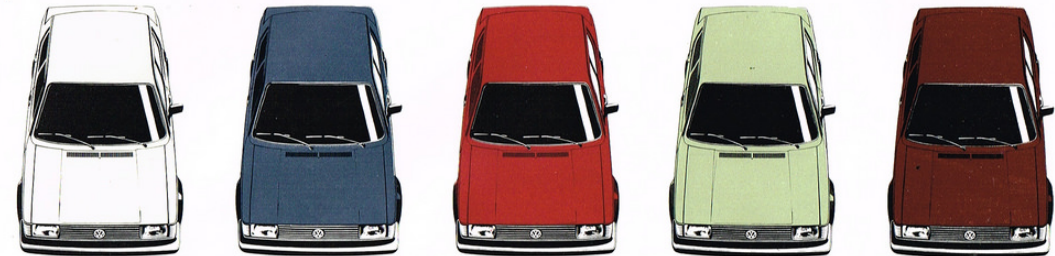
** Combined with brown dashboard.

Print processes do not allow exact reproduction of colours. This applies to the exterior colours as well as to the upholstery.

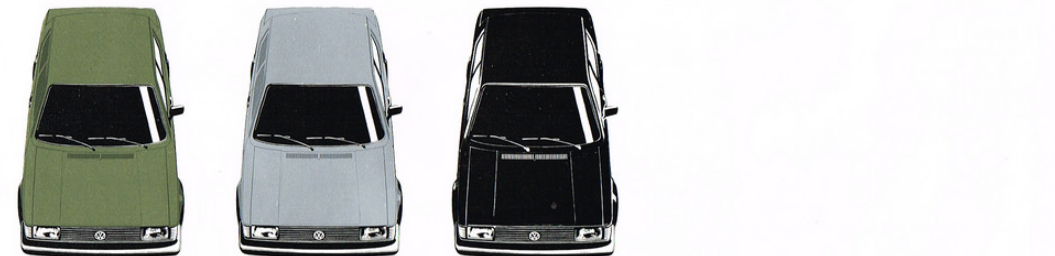
Exterior colours



lemon yellow B2 - mexico beige D9 - mars red G6 - malaga red H5 - florida blue J1 -



alpine white P1 - azores metallic W3 - indiana red metallic W9 - inari silver metallic Y4 - canyon metallic Y8 -



onyx metallic Z2 - diamond silver metallic Z4 - black 9000 -

The Jetta. Technical Specifications and Equipment.

Model	Engine	Power transmission and chassis	Performance	Dimensions and weights
Jetta	Transverse, four-cylinder, in-line front engine. Overhead camshaft with toothed belt drive. Water cooling with electrically driven, thermostatically controlled fan. 12 volt electrical system with alternator.	Front-wheel drive via single-plate dry clutch. Fully synchronized four-speed gearbox, differential and double jointed semi-axles. Springing, front and rear: coil springs with telescopic shock absorbers all combined in suspension struts. Suspension: suspension struts and lower wish bones (self-stabilizing steering-roll radius) in front; combined trailing arm torsion beam axle at rear. Steering: maintenance-free, self-adjusting rack and pinion steering, safety steering column. Brakes: diagonally divided, dual circuit brake system with disc brakes in front and drum brakes at rear. Tyres: steel radial ply.	a) = maximum speed manual/auto b) = acceleration at half payload manual/auto	Dimensions: a) Wheel base b) Track front/rear c) Maximum length/width/height d) Minimum ground clearance e) Turning circle Weights: a) Unladen weight b) Permissible total weight c) Payload d) Permissible axle loads front/rear e) Permissible trailer load with/without brakes* * UK legislation states that if a trailer weighing more than the kerb weight of the vehicle is being towed, a speed restriction of 40 mph will be placed on the vehicle. All Models: Luggage Compartment Capacity: Measured using spheres of 50 mm diameter: 22.2 cu.ft. (630 litres)
Jetta 1300 cc 60 bhp	Capacity: 1.3 litres (1272 cc) Bore and stroke: 75 x 72 mm Output: 60 bhp at 5600 rpm Compression ratio: 8.2:1 Maximum torque: 95 Nm at 3500 rpm Down-draught carburettor with manual choke. Alternator capacity: 35 amp max. Battery: 36 Ah.	Four-speed gearbox. Wheel rim size: 5J x 13. Tyre size: 155 SR 13. Brake servo. Stabilizer at rear.	a) 92 mph b) 0-50 mph in 9.0 secs 0-60 mph in 14.0 secs	Dimensions: a) 94.4 ins. (2398 mm) b) 54.7/53.4 (1390/1358 mm) c) 164.9/63.4/55.5 ins (4190/1610/1410 mm) d) 4.7 ins. (118 mm) e) approx. 33.8 ft (10.3 m) Weights: a) 1786 lbs (810 kg) b) 2734 lbs (1240 kg) c) 948 lbs (430 kg) d) 1345/1389 lbs (610/630 kg) e) 1764/ 882 lbs (800/400 kg)
Jetta 1500 cc 70 bhp	Capacity: 1.5 litres (1457 cc) Bore and stroke: 79.5 x 73.4 mm Output: 70 bhp at 5600 rpm Compression ratio: 8.2:1 Maximum torque: 110 Nm at 2500 rpm Down-draught carburettor with automatic choke Alternator capacity: 45 amp max. Battery: 36 Ah	Four-speed gearbox. Rim size: 5½J x 13. Tyre size: 175/70 SR 13. Brake servo. Stabilizer at rear. At extra charge: Three-speed automatic transmission.	a) 96/93 mph b) 0-50 mph in 8.5/ 9.8 secs. 0-60 mph in 13.0/15.0 secs.	Dimensions: a) 94.4 ins (2398 mm) b) 55.3/54.0 ins (1404/1372 mm) c) 164.9/64.2/55.5 ins (4190/1630/1410 mm) d) 4.7 ins. (118 mm) e) Approx. 33.8 ft (10.3 m) Weights: a) 1852 lbs (840 kg) b) 2822 lbs (1280 kg) c) 970 lbs (440 kg) d) 1477/1389 lbs (670/630 kg) e) 2205/ 882 lbs (1000/400 kg)
Jetta GLi 1600 cc 110 bhp	Capacity: 1.6 litres (1588 cc) Bore and stroke: 79.5 x 80 mm Output: 110 bhp at 6100 rpm Compression ratio: 9.5:1 Maximum torque: 140 Nm at 5000 rpm Alternator capacity: 45 amp max. Battery: 36 Ah Oil cooler	Differences over 1500 cc model: Five-speed gearbox. Tyre size: 175/70 HR 13. Larger brake servo. Ventilated disc brakes. Stabilizer in front and re-inforced stabilizer at rear. Automatic transmission not available.	a) 110 mph b) 0-50 mph in 6.4 secs. 0-60 mph in 9.5 secs.	Dimensions: a) 94.4 ins (2398 mm) b) 55.3/54.0 ins (1404/1372 mm) c) 164.9/64.2/54.9 ins (4190/1630/1395 mm) d) 4.7 ins (118 mm) e) approx. 33.8 ft (10.3 m) Weights: a) 1940 lbs (880 kg) b) 2822 lbs (1280 kg) c) 882 lbs (400 kg) d) 1499/1389 lbs (680/630 kg) e) 2646/ 882 lbs (1200/400 kg)

Jetta L 1300 & 1500 cc	Jetta GL 1300 & 1500 cc	Jetta GLi 1600 cc
<p>Exterior Equipment: Grey plastic bumpers with chrome strip Integrated front spoiler Waistline trim with black bump strip Double decorative stripes Heated rear window Hazard warning lights Reversing lights Parking lights Two speed wipers with brief wipe Electric windscreen washers Intermittent wipe with automatic wash/wipe Driver's door mirror Rear foglamp Lockable fuel cap PVC underbody protection Halogen headlamps (1500/1600 cc only)</p> <p>Interior Equipment: Courtesy light Child safety locks on rear doors Front/rear ashtrays Padded steering wheel Driver's swivelling sunvisor Passenger's sunvisor with vanity mirror Passenger grab handle Carpets Cloth upholstery Fully reclining front seats Adjustable head restraints 3 speed heater/blower Glove box Anti-dazzle rear view mirror Two assist straps Trip mileage recorder Clock Brushed aluminium fascia</p> <p>Factory fitted optional equipment: Laminated windscreen (standard 1600 cc only) Alloy sports wheels (standard 1600 cc only) Automatic transmission (1500 cc only) Sliding steel sunroof Headlamp washers Green tinted glass all round with laminated windscreen</p>	<p>In addition to "L" equipment: Exterior: Bronze tinted glass Interior adjustable driver's door mirror Large decorative wheel trims Black plastic strip between tail lights Metallic paint</p> <p>In addition to "L" equipment: Interior: Improved interior upholstery Door linings with carpet inlays Cigarette lighter Illuminated instrumentation Panel light rheostat Lockable glove box Central instrument console</p>	<p>In addition to "L" and "GL" equipment: Exterior: Windscreen wiper arm with wind-scoop on driver's side Laminated windscreen Alloy sports wheels</p> <p>In addition to "L" and "GL" equipment: Interior: Rev counter</p>

The Jetta. Ask for a test drive.