

---

# Nissan/Datsun



Sentra

Pulsar

Stanza

200 SX

280 ZX

Maxima

Trucks

---



An impressive fuel economy story from Nissan

In the recent Federal Transport Department's fuel efficiency tests for all 1983 model cars, Nissan/Datsun vehicles placed right up with the high-mileage performers. Of more than 500 models tested, the Sentra was 2nd and 5th (diesel and gas) in the miser race!...with Pulsar and Stanza in the top thirty.

Nissan/Datsun has the one...to suit your budget when you buy—and suit your pocketbook as you drive.

1983 Fuel economy ratings\*\*

Model	Eng./L.	Trans.	L/100 KM	MPG
Sentra (FFS)	1.5	5-Speed	4.9	57
Sentra	1.5	5-Speed	5.9	47
Sentra	1.6	5-Speed	6.1	46
Sentra	1.5	Automatic	6.7	42
Sentra	1.6	Automatic	7.2	39
Wagon	1.5	5-Speed	6.3	44
Wagon	1.6	5-Speed	6.1	46
Wagon	1.5	Automatic	6.9	40
Wagon	1.6	Automatic	7.3	38
Diesel	1.7	5-Speed	4.7	60
Diesel	1.7	Automatic	5.5	51
Pulsar NX	1.6	5-Speed	6.0	47
Pulsar NX	1.6	Automatic	7.3	38
Stanza	2.0	5-Speed	6.4	44
Stanza	2.0	Automatic	7.6	37
200SX	2.2	5-Speed	7.6	37
200SX	2.2	Automatic	8.6	32
280ZX	2.8	5-Speed	9.6	29
280ZX	2.8	Automatic	10.6	26
280ZX (2+2)	2.8	5-Speed	9.8	28
280ZX (2+2)	2.8	Automatic	10.6	26
Turbo	2.8	5-Speed	10.3	27
Turbo	2.8	Automatic	11.4	24
Turbo (2+2)	2.8	5-Speed	10.3	27
Turbo (2+2)	2.8	Automatic	11.5	24
Maxima (Gas)	2.4	Automatic	8.8	32
Maxima (Diesel)	2.8	Automatic	7.1	39
Maxima (Diesel)	2.8	5-Speed	6.8	41
Van Trucks				
2WD(+H/D)	2.2	4-Speed	9.4	30
2WD	2.2	5-Speed	8.1	34
2WD	2.2	Automatic	9.5	29
Cab and Chassis	2.2	4-Speed	13.4	21
4WD	2.2	4-Speed	9.8	28
4WD	2.2	5-Speed	9.6	29
2WD Diesel	2.2	5-Speed	6.6	42

\*\*Combined rating based on Transport Canada test procedures. Actual consumption may vary.

Sentra

Don't let Sentra's price tag fool you. The bottom line may say affordability, but the top line says luxury in every feature and detail.

Ease into the cloth-faced comfort of reclining bucket seats...a quiet cushioned carpeted world. A full array of controls and instruments.

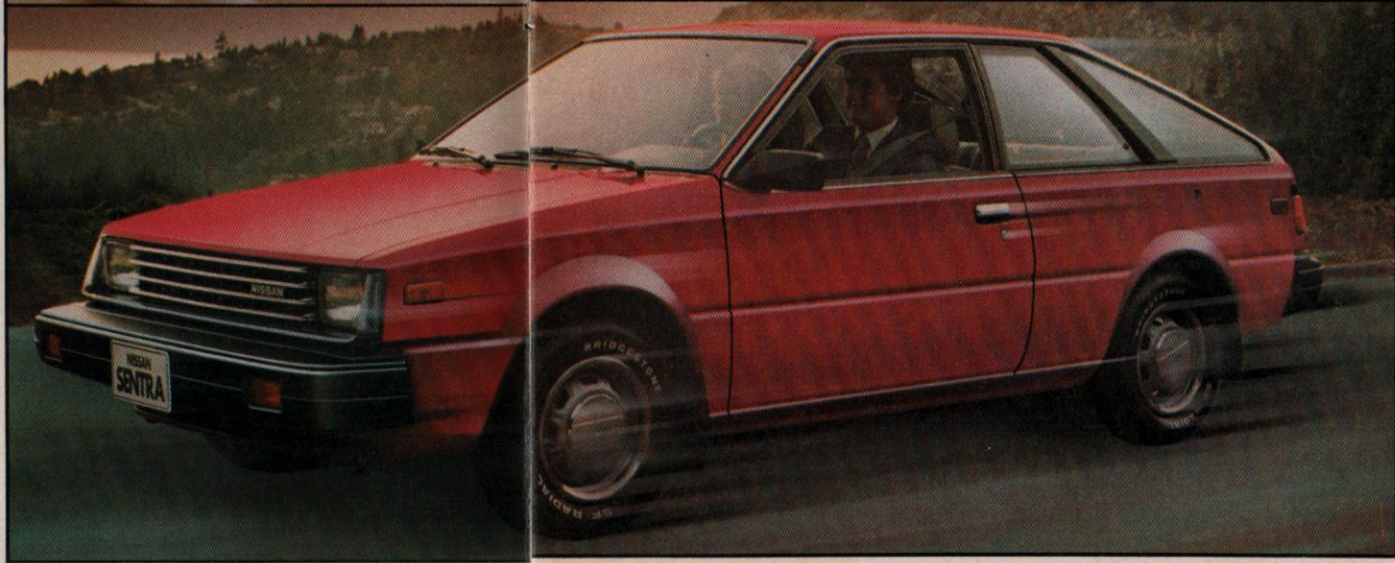
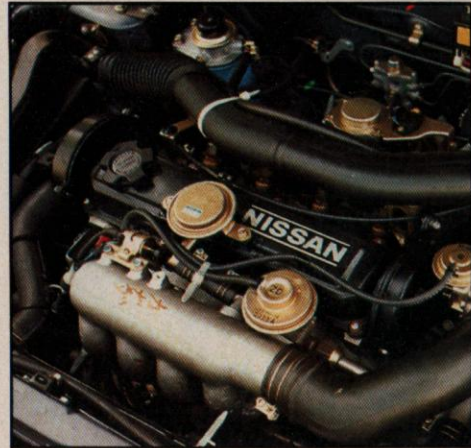
Front-wheel drive matched to crisp rack and pinion steering (power assisted on the XE Hatchback) delivers road hugging traction and pinpoint control. Four-wheel independent suspension on all models smoothes out washboard roads and hairpin bends. With power assisted front disc brakes and auto-adjusting rear drums, Sentra can stop on a dime.

2-door and 4-door Sedans, 3-door Hatchback and 5-door Wagon. Take your pick of trim levels. Decide the engine then match it up to a silky 5-speed manual with overdrive or 3-speed automatic.

Now you can add more muscle per mile with Nissan's brilliantly engineered new E16 series 1.6 litre overhead cam engine. It's optional on every model except the thrifty Sentra MPG. Its peppy pickup and passing power come standard. Or take the diesel route to a balanced budget by choosing Nissan's brand new 1.7 litre diesel power plant, exclusive to the popular Sentra 2-door Deluxe.

Nissan's advanced engineering technology has developed a diesel engine that marries pump-passing economy with surprising responsiveness. Backed by a heavy duty 80 amp/hr maintenance-free battery and 60 amp/hr alternator, it gives you amazing fuel economy at economical diesel fuel prices. And Nissan's diesel dependability cuts maintenance costs to the bone.

Sentra, a personal sporty car with genuine sports car performance; a practical and pacy family sedan; a kids-and-groceries wagon with power to spare; even a cost-cutting vehicle for your business rounds or your company fleet.



Sentra Specifications: Engine: 1.5 Litre (Gas), 4 Cyl O.H.C., (Optional: 1.6 Litre Gas, 1.7 Litre Diesel). Transmission: 5-speed (Optional 3-speed Automatic). Fuel Capacity: 50 Litres. Brakes: Power assisted front disc, rear drum. Suspension: Front: Independent strut with coil springs. Rear: Independent trailing arm with coil springs. Wheel Base (MM): 2400. Length (MM): 4250. Wagon 4375. Width (MM): 1620. Height (MM): 1385. XE 1355. Wagon 1360.

Features	XE Hatchback	5-Door Wagon	Deluxe	4-Door Deluxe	2-Door Deluxe	2-Door MPG	2-Door Deluxe (Diesel)	2-Door Standard
S Standard								
O Optional								
* In conjunction with automatic transmission								
Front wheel drive	S	S	S	S	S	S	S	S
Power assisted front disc rear drum brakes	S	S	S	S	S	S	S	S
4 Wheel independent suspension	S	S	S	S	S	S	S	S
Rack and pinion steering	S	S	S	S	S	S	S	S
Power assisted steering	S	O	O	O	O	O	O	O
Halogen head lamps	S	S	S	S	S	S	S	S
Tinted glass—all windows	S	S	S	S	S	S	S	S
Dual remote controlled outside mirrors	S	O	O	O	O	O	O	O
Sunroof	O	O						
2 Speed intermittent windshield wipers		S	S	S	S	S	S	S
Variable speed intermittent windshield wipers	S							
Side window defoggers	S	S	S	S	S	S	S	S
Electric rear window defroster	S	S	S	S	S	S	S	S
High output heater/defogger	S	S	S	S	S	S	S	S
Vinyl high back bucket seats (reclining)								S
Full face cloth bucket seats (reclining)	S	S	S	S	S	S	S	S
Split fold down rear seat	S	S						
Full door trim panels	S	S	S	S	S	S	S	S
Passenger walk-in device	S			S	S	S		
Cut-pile carpeting	S	S						
Loop carpeting			S	S	S	S		
AM/FM stereo radio	S	O	O	O	O	O	O	O
Warning chimes	S	S	S	S	S	S	S	S
Quartz clock	S							
Cigarette lighter	S	S	S	S	S	S	S	S
Remote fuel filler lid/truck/hatch opener	S	S	S	S	S	S	S	S
Trip odometer	S	S	S	S	S	S	S	S





# Pulsar NX

**Pulsar NX Specifications:** Engine: 1.6 Litre 4 cyl. O.H.C.(Gas). Transmission: 5-speed (Optional 3-speed automatic with lock up torque converter). Fuel Capacity: 50 Litres. Brakes: Power assisted front disc/rear drum. Suspension: Front: Independent struts with coil springs and stabilizer bar. Rear: Independent trailing arm with coil springs. Wheel Base (MM): 2415. Length (MM): 4125. Width (MM): 1620. Height (MM): 1355.

## Features:

- S** Standard  
**O** Optional

	2-door Sport Coupe
Electronic ignition	S
Independent front and rear suspension	S
Front stabilizer bar	S
Rack and pinion steering	S
Power steering	O
Power assisted front disc/rear drum brakes	S
Covered retractable halogen headlamps	S
Tilt steering column	S
Dual remote controlled outside mirrors	S
Variable speed intermittent windshield wipers	S
Remote hood/fuel filler lid (lockable) trunk hatch release	S
Side window defoggers	S
Electric rear window defroster	S
AM/FM 4-speaker stereo radio	S
Quartz clock	S
Tachometer	S
Temperature gauge	S
Brake fluid level warning light	S
Reclining low back front bucket seats with adjustable head rests	S
Automatic cargo/trunk light	S
One piece fold down rear seat	S

**N**issan crafted the Pulsar NX in the most fun-and-functional format on the road today: the 2-door, 5-seat Sports Coupe with front wheel drive.

Every sculptured inch tells you that Pulsar is meant to move. The sleek, slim wedge of its aerodynamic styling. Retractable halogen headlamps and integral front and rear spoilers.

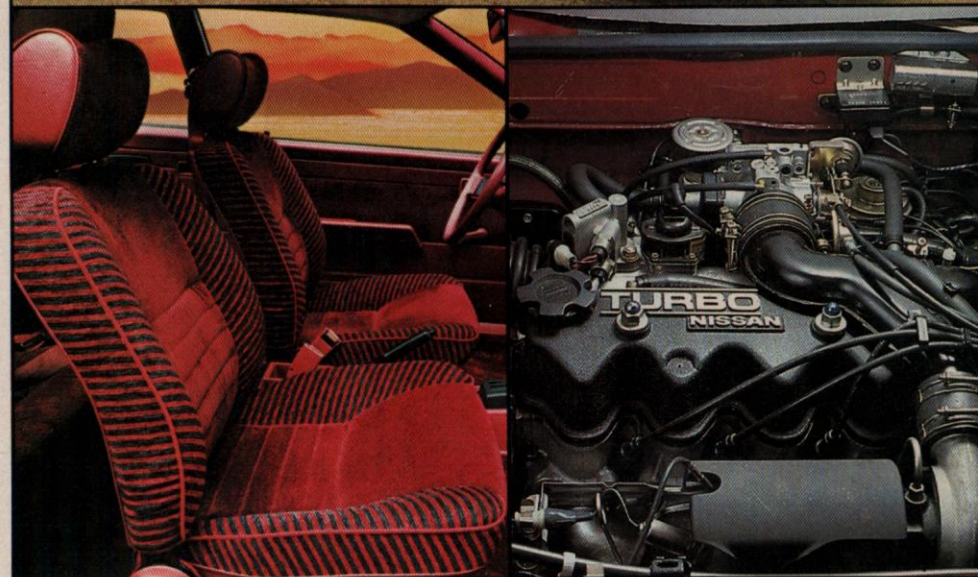
Under Pulsar's rakish hood is Nissan's muscular "E" Series 1.6 litre, 4 cylinder overhead cam engine. Turn on the power and she'll fly...on money-saving regular gas.

Independent front and rear suspension with front stabilizer bar make Pulsar an easy rider. And power assisted front disc brakes will stop your steel belted radials fast, firm.

You ride in the ease of low back front bucket sports seats with elegant cloth interior trim. Cut pile carpeting and extra sound suppression make this a private, personal world. But touch a button and you can fill that world with superb stereo sound from your AM/FM 4 speaker radio.

And it's all standard. So are the quartz clock, cigarette lighter, electric rear window defogger, and much more. All part of Nissan quality.

For the sports minded who like the feeling of power, an optional turbo charged version in mid 1983. Step on the accelerator and the turbo creates spine-tingling performance.





# Stanza

**Stanza Specifications:** Engine: 2.0 Litre (Gas), 4 Cyl. O.H.C. Transmission: 5-Speed. (Optional Automatic). Fuel Capacity: 54 Litres. Brakes: Power assisted front disc, rear drum. Suspension: Front: Independent strut with coil springs. Rear: Independent strut and parallel link. Wheel Base (MM): 2470. Length (MM): 5-Door H/B, 4-Door N/B 4405, 3-Door 4340. Width (MM): 1655. Height (MM): 5-Door H/B, 4-Door N/B 1390, 3-Door Sedan 1370.

## Features:

**S** Standard  
**O** Optional

\* In conjunction with optional automatic transmission power & tilt steering are included on 3 & 5-door deluxe models.

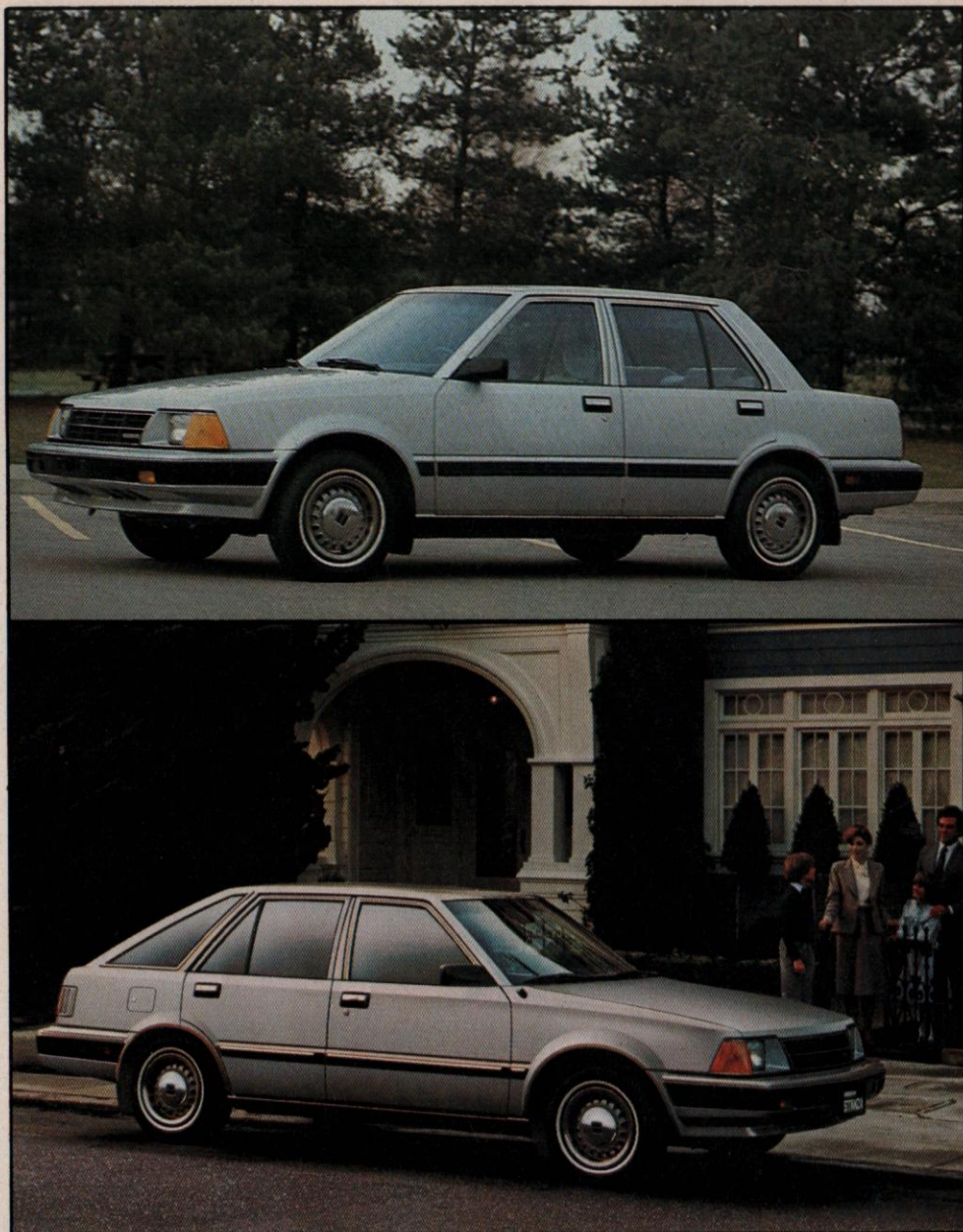
\*\* Remote side window opener only on 3-door H/B model

\*\*\* Automatic Transmission only

**N/B** Notchback

**H/B** Hatchback

	5-Door XE-H/B	3-Door XE-H/B	5-Door Deluxe-H/B	3-Door Deluxe-H/B	4-Door N/B Sedan
Front wheel drive	S	S	S	S	S
Power assisted ventilated front disc rear drum brakes	S	S	S	S	S
4-Wheel independent suspension	S	S	S	S	S
Power sunroof	O	O			O
Tilt steering column	S	S	O*	O*	S
Trim rings	S	S			S
Tachometer/voltmeter/oil pressure gauges	S	S			S
Power assisted steering	S	S	O*	O*	S
Remote fuel door/hatch and side window opener	S**	S			S
Dual remote controlled outside mirrors—tinted	S	S			S
Variable speed intermittent windshield wipers	S	S			S
Intermittent windshield wipers			S	S	
Quartz clock			S	S	
Quartz digital clock with date	S	S			S
Reclining front bucket seats	S	S	S	S	S
One piece fold-down rear seat			S	S	
Split fold-down seat backs	S	S			
8 Function warning system			S	S	
11 Function warning system	S	S			S
AM/FM multiplex sound system	S	S			
Adjustable driver's high/lumbar support	S	S			S
Electric rear window defroster	S	S	S	S	S
Rear window wiper/washer	S	S	S	S	
Air conditioning	O***				O
Vanity mirror—driver's					S
Vanity mirror—passenger	S	S	S	S	S
AM/FM/MPX radio/cassette audio system with Dolby noise reduction +metal tape selector with 4-way speakers system					S
Power windows					S
Power door locks					S



**P**repare yourself for a pleasant surprise...for Nissan Stanza.

Here's the room and rational appeal of a family wagon, the luxury of a prestige sedan, the swift power of a sports car. All in one.

Choose the 3-door or 5-door, the Deluxe or the sumptuous XE, and every inch will speak of quality.

Walk around your Stanza XE. Style and safety go hand in hand.

Nissan's transverse-mounted 2.0 litre 4-cylinder single overhead cam engine is a champion. It's light, compact and economical, but a touch of your toe releases a surge of power that makes Stanza a joy to drive.

Add the all-weather traction of front wheel drive, the road-smoothing ride of 4-wheel independent suspension, the instant

precision of rack and pinion steering (power assisted on the XE). Stanza—the car of the 80's.

Power assisted, ventilated front disc brakes and rear drums are safe, sure and standard. So in Nissan's crisp 5-speed overdrive transmission; or you can opt for the optional 3-speed automatic with lock-up torque converter.

Settle in. No matter how long you drive you'll do so in comfort. Every feature is designed and crafted for your comfort, convenience and safety. The steering wheel of your XE tilts, the power sunroof slides silently open, the split rear seat folds down to give you wagon-length room inside. Your Stanza XE comes equipped with a four speaker AM/FM multiplex audio system of exceptional fidelity. Check the price again.



Unbelievably, this is an affordable family car. And thrifty with a litre of gas.

And joining the Stanza family in mid-83 is the Nissan/Stanza, 4-door notchback, the sedan of the 80's. Power windows, AM/FM multiplex stereo system and beautiful velour styled seats are just some of the luxuries available. Trunk space is massive. Beauty, style and luxury make this new Nissan 4-door sedan a welcome complement to the Stanza fleet.



# 200SX

**200SX Specifications:** Engine: 2.2 Litre (Gas) 4 cyl. O.H.C. Transmission: 5-Speed (Optional Automatic). Fuel Capacity: 53 Litres. Brakes: 4-Wheel disc. Suspension: Front: Independent strut with coil springs and stabilizer bar. Rear: Rigid axle with coil springs, four bar link and stabilizer bar. Wheel Base (MM): 2400. Length (MM): 4475. Width (MM): 1680. Height (MM): 1310.

## Features:

**S** Standard  
**O** Optional  
 \* Included with Automatic Transmission

	SL Hardtop	SL Hatchback	Deluxe Hardtop
Electronic fuel injection	S	S	S
Power steering	S	S	O*
Electronic ignition	S	S	S
Front and rear stabilizer bars	S	S	S
Power assisted 4-wheel disc brakes	S	S	S
Reclining front bucket seats	S	S	S
3-Way sunroof	S	S	
Side window defoggers	S	S	S
Electric rear window defroster	S	S	S
Remote trunk/fuel filler door release	S	S	S
Remote hatch release		S	
Rear window wiper/washer		S	
Split fold down rear seat		S	
Power windows (front only on hatchback)	S	S	
Computer sensor system	S	S	
AM/FM MPX 6-speaker stereo radio	S	S	
Dual electric remote control mirrors-tinted	S	S	
Vocalized warning system	S	S	
Cruise control with resume feature	S	S	
Leather package	O	O	
Air conditioning	O	O	

From its panther-lean styling to its advanced electronic circuitry, this superbly engineered machine creates excitement for those who drive it, and envy from those who don't.

The 200SX combines grace with an almost ballistic power of performance. Datsun's dynamic NAPS Z-22E 2.2 litre OHC engine, with electronic fuel injection generates 102 hp of genuine power.

You accelerate quickly, moving through the standard 5-speed overdrive transmission with ease. Speed control now comes standard with manual shift in the 'SL' package.

A silky 3-speed automatic overdrive transmission is optional. It features lockup torque converter to give you extra fuel efficiency from an already economical power unit.

Go, and you go fast. Stop, and you stop fast, with power assisted disc brakes.

From the moment you switch on the electronic ignition of your 'SL', a sophisticated warning system takes over as your co-pilot, monitoring six vital functions and vocalizing its data. An exquisite AM/FM 6 speaker multiplex stereo system. It fills your 200SX with a brilliance of sound.

The driver's seat features both adjustable thigh and lumbar support. Passenger comfort is of the same high calibre. You can fold down the split rear seat on the 'SL' Hatchback and carry long loads home with you.

By any criterion—its rally record, engineering, innovation, performance, economy, luxury, level of safety—this is a car of exceptional merit.





# 280ZX

**280ZX Specifications:** Engine: 2.8 Litre (Gas) Fuel injected 6 cyl O.H.C. Transmission: 5-Speed. (Optional automatic) Fuel Capacity: 80 Litres. Brakes: Power assisted self adjusting 4-wheel disc. Suspension: Front: Independent strut type with coil springs transverse link and front stabilizer bar. Rear: Independent semi-trailing arms with coil springs and stabilizer bar. Wheel Base (MM): 2320, 2+2 2520. Length (MM): 4420, 2+2 4620. Width (MM): 1690. Height (MM): 1295, 2+2 1305.

## Features:

- S Standard  
O Optional  
\* Automatic Transmission

	Sport Coupe	GL Coupe	GL 2+2
Electronic ignition	S	S	S
Electronic fuel injection	S	S	S
Rack and pinion steering	S	S	S
Power assisted steering	S	S	S
Independent suspension (front and rear)	S	S	S
Halogen headlamps	S	S	S
Headlamp washers	S	S	S
Power assisted 4-wheel disc brakes	S	S	S
Alloy wheels	S	S	S
Dual power mirrors	S	S	S
Left hand manual mirror	S	S	S
Tinted glass—all around	S	S	S
Electric rear window defroster/side window defoggers	S	S	S
Rear window wiper/washer	S	S	S
Variable speed intermittent windshield wipers	S	S	S
High back reclining bucket seats	S	S	S
Low back reclining bucket seats	S	S	S
Driver's seat height adjuster and lumbar support	S	S	S
Passenger's seat height adjuster and lumbar support	S	S	S
Split fold-down rear seat	S	S	S
Cut-pile carpeting	S	S	S
Computer sensor system	S	S	S
4 Speaker AM/FM stereo radio	S	S	S
AM/FM digital stereo radio with cassette player Dolby metal tape selector and 4 speaker surround sound	S	S	S
Power antenna	S	S*	S*
Analogue quartz clock	S	S	S
Quartz digital clock with date & elapsed time feature	S	S	S
Dual fuel gauges/tachometer	S	S	S
Driver's visor/vanity mirror	S	S	S
Passenger's visor/vanity mirror	S	S	S
Moveable map light	S	S	S
Power windows	S	S	S
Automatic speed control with resume feature	S	S	S
Air conditioning with automatic temperature control	S	S	S
T-bar roof	O	S	S
Turbo package	O	O	O
Leather package (includes digital instrumentation)	O	O	O

Just standing still, the 280ZX can make your heart race. It's an ideal. The realization of a dream. It's the standard against which other sports cars are measured.

And it is power! The unmatched 2.8 litre O.H.C. 6 cylinder with electronic fuel injection and electronic ignition. We wanted the utmost precision in air/fuel mixing. Because we wanted the utmost in the application of power.

That's why this very same engine has won championships for both engineers and racing drivers the world over.



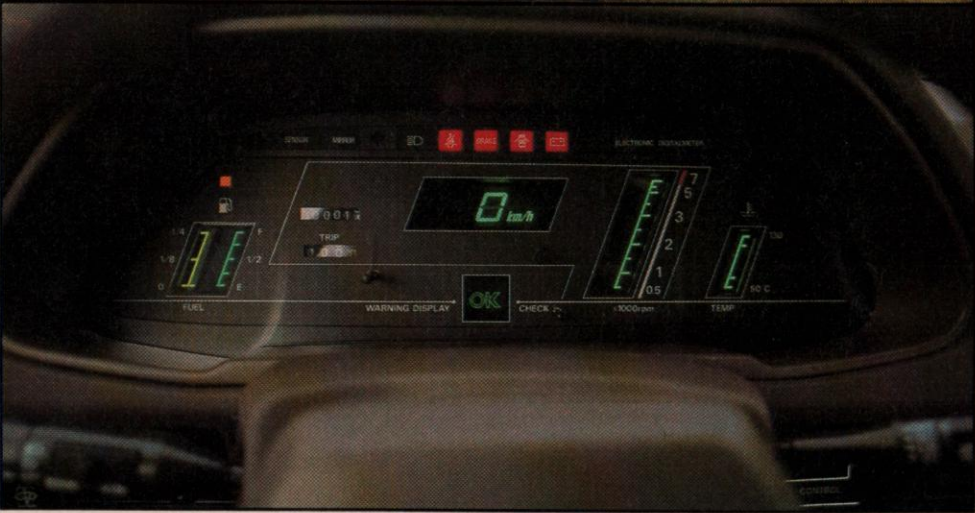


Yet as we developed all this power, we wanted you to be in control. We insisted on rack and pinion steering, 4-wheel independent suspension, 4-wheel disc brakes and a choice of automatic or manual 5-speed transmission. With overdrive of course. People who know tell us the Datsun 280ZX is a smooth powerful luxury automobile.

But for sheer luxury get behind the wheel of the GL package. Experience the sensitive response of power assisted steering. Automatic speed control, outside power mirrors, power windows, automatic power antenna, a master locking system, and an air conditioning unit with set-and-forget controls all add to your sense of ease.

Brake audible wear sensor, rear window defroster and tinted glass add to your feeling of luxury.

You'll appreciate the exquisite attention given to detail: side elastic map pockets and attractive T-bar roof. The AM/FM Digital Stereo Radio with a cassette and 4-speaker surround sound.



For sheer power, that special surge of snapping power, we're talking turbo...there's no other way to go.

The feeling is physical. Emotional. Mystical...as you watch your boost needle cross just a whisper right of the 0 line. You feel the rush of 36% more horsepower, 29% more torque. You feel your Datsun Turbo glide you through the whole range—50 to 100 km/h...in seconds.

Why so smooth? Datsun is why. The Datsun-designed turbocharger is powered by the exhaust gases that are normally wasted in ordinary cars. These collected gases turn a turbine, which in turn runs a compressor, which in turn, forces more air into the engine cylinders for a lot more power.

Which 280ZX is for you? When you get to that question the final decision will be easy. No other car in the world captivates the imagination like this one...this Datsun...This beautiful 280ZX.

# Maxima

This is a world class luxury car without the world class luxury price. It's a car with European-like styling, engineering and performance without European-like price tags or maintenance costs. And it makes luxury features standard equipment like sumptuous interiors and exquisite sound systems.

There's not an inch of unnecessary space or unfunctional weight anywhere in the automobile. Maxima gives you all the interior and trunk room of a much larger car while offering the economies of a smaller one.

For 1983, you can choose an infinitely adjustable sunroof, a two-tone paint scheme, and a genuine leather interior that is too sensuous to describe.

Underneath all the luxury you'll find superbly engineered flawless performance. Maxima's 2.4 litre 6-cylinder O.H.C. engine is. This powerplant comes equipped with L-jetronic fuel injection, transistorized electronic ignition, a three-way catalytic converter, and a maintenance-free heavy duty battery.

The 4-speed automatic transmission with overdrive is standard. It also features Datsun's famous and unique Lock-Up torque converter for fuel efficiency comparable to that of manual transmission.

But the most practical Maxima, is the diesel Maxima. A 2.8 litre 6 cylinder O.H.C. engineered for very un-diesel-like acceleration, smooth quiet operation, plenty of power for passing, and of course fantastic fuel efficiency. Maxima. All the luxury of an expensive touring car...for so little. Who could ask for more?



**Maxima Specifications:** Engine: 2.4 Litre 6 cyl. O.H.C. (Gas), 2.8 Litre 6 cyl. O.H.C. Diesel. Transmission: 4-Speed automatic (optional 5-speed diesel only). Fuel Capacity: 62 litres. Brakes: Power assisted 4-wheel disc. Suspension: Front: Independent struts with coil springs and stabilizer bar. Rear: Independent semi-trailing arms with coil springs and stabilizer bar. Wheel Base (MM): 2625. Length (MM): 4655. Width (MM): 1655. Height (MM): 1385.

Features:		Gas	Model
S Standard			
O Optional			
Electronic fuel injection	S		
Electronic ignition	S		
Rack and pinion steering	S	S	
Independent front and rear suspension	S	S	
Power assisted 4-wheel disc brakes	S	S	
Digital 8 speaker AM/FM stereo with Dolby noise reduction and metal tape selector	S	S	
Leather package	S		
Power windows	S	S	
Tilt steering column	S	S	
Power door locks	S	S	
Halogen headlamps	S	S	
Power sunroof	O	O	
Dual outside power mirrors—tinted	S	S	
Tinted glass all windows	S	S	
Remote fuel filler lid (locking)/hood/& trunk release	S	S	
Air conditioning	S	S	
Vocalized warning system	S	S	
Automatic power antenna	S	S	
Quartz digital clock with date and elapsed time feature	S	S	
Cruise control	S	S	
Fully adjustable reclining front bucket seats	S	S	
Velour pillow styled seats	S	S	
Adjustable driver's thigh and lumbar support	S	S	
Driver and passenger visor/vanity mirrors	S	S	
Cut-pile carpeting	S	S	
Tachometer/voltmeter/oil pressure gauges	S		
Multi-function monitor system	S	S	





Trucks

Datsun has done it again! The perfect packages in trucks for the times. Hard working when the job has to be done ...and hard playing when the times is for fun. All the choices, all the options, with power plants so impressive it'll make your wheels spin just trying to decide which one is best for you. So here's a quick rundown to help you get started.

2 x 2

**King Cab**...with an interior as comfortable as a living room. Cloth upholstery, rally wrapped steering wheel, reclining front bucket seats, Fold-Up rear jumpseats, and much much more. Outside, styled steel wheels, chrome trim rings, plus mirror and grille accents all are standard. The cargo box is illuminated for night work, and easily handles up to 500 kg (1100 lbs.) of cargo. A one-hand tailgate release and a tailgate inner liner make working the King Cab effortless. Under the hood you get Nissan's world famous 2.2 litre NAPS Z22S O.H.C. gas engine.

**Long Box** for when bigger is better. Even with a big load like a camper, a canopy, or 500 kg (1,100 lbs.) of cargo, you ride in comfort all the way. An independent front suspension, 4 or 5 speed transmission, or variable ratio recirculating ball steering.

Other features such as centre console, intermittent wipers, and full interior door trim makes the Datsun Deluxe Long Box long on looks and comfort as well as on size.

Datsun's **Regular Box** is off to the best start a hardworking truck can have, it can handle 500 kg. (1,100 lbs.) effortlessly.

The ride is smooth no matter what the terrain. Variable ratio steering, front disc brakes, and rear drums help add to the safety and stability of this Datsun truck.

The Datsun **Cab & Chassis** comes with a heavier suspension, larger tires and greater payload carrying capacity. Powered by the labour-loving Nissan NAPS Z22S engine and fitted with a camper, this Datsun still saves you gas money whether you're in downtown traffic or out on a superhighway, superhighway.

Naturally you can buy a Cab and Chassis and build on it. Your Nissan dealer will help you choose the right type of carrier for your needs, whether it be a flat-bed, van, camper or custom box. Here are two examples of the kind of commercial modifications your Nissan dealer can help you with.

**Multi Mini Van.** A light, durable all-aluminum 208 kg body that can easily carry up to 924 kg of cargo. Designed to be fuel efficient thru less wind resistance, this body comes complete with a 5-year rust/electrolysis warranty, 127 mm plywood floor, built-in wind deflector, interior light,

Features:	King Cab		Long Box Deluxe		Long Box		Regular Box		Heavy Duty/Cab & Chassis		King Cab Diesel		Long Box Diesel		Regular Box Diesel		4x4 King Cab		4x4 Long Box		4x4 Regular	
	S	O	S	O	S	O	S	O	S	O	S	O	S	O	S	O	S	O	S	O	S	O
Brake-load sensing valve	S		S		S		S		S		S		S		S		S		S		S	
Dual horns	S		S		S		S		S		S		S		S		S		S		S	
Variable ratio R/B steering	S		S		S		S		S		S		S		S		S		S		S	
Power steering	O										O						O		O		O	
Torsion bar suspension	S		S		S		S		S		S		S		S		S		S		S	
Telescopic shock absorbers	S		S		S		S		S		S		S		S		S		S		S	
Power assisted front disc/rear drum brakes	S		S		S		S		S		S		S		S		S		S		S	
Styled steel wheels	S		S		S		S		S		S		S		S				S		S	
White styled steel wheels																			S		S	
Chrome trim rings	S										S											
Sunroof	O										O						O					
Rear box illumination	S										S								S			
Bucket seats	S								CC		S								S			
Reclining seats	S										S								S			
Contoured front bench seat			S		S		S		HD		S		S		S				S		S	
Cloth door inserts and map pocket	S										S				S				S			
Tinted glass-all windows	S		S						S		S		S		S		S		S		S	
3-Speed heavy duty heater/defroster	S		S		S		S		S		S		S		S		S		S		S	
Side window defoggers	S		S		S		S		S		S		S		S		S		S		S	
Wrapped steering wheel	S										S				S							
Intermittent windshield wipers	S		S						S		S		S		S		S		S		S	
2-speed windshield wipers					S																	
Variable speed intermittent windshield wiper setting	S										S											
Cigarette lighter	S		S						S		S		S		S		S		S		S	
1100 lb. (500 kg) Payload capacity	S		S		S		S		*		S		S		S		S		S		S	
88.8" Cargo box			S		S				S		S		S		S				S			
Lockable glove compartment	S		S		S		S		S		S		S		S		S		S		S	
Floor carpeting	S		S						S		S		S		S		S		S		S	
Flip open rear side windows	S										S				S							
Electric rear window defroster	S										S				S							
Halogen head lamps	S		S						S		S		S		S		S		S		S	
Automatic adjustable rear brakes	S		S		S		S		S		S		S		S		S		S		S	
Dual range four-wheel drive																			S		S	
Fender flares																			S		S	
Skid plates																			S		S	
Oil and battery gauges																			S			
AM/FM stereo radio	O		O		O		O		O		O		O		O		O		O		O	
Sports steering wheel	O		O		O		O		O		O		O		O		O		O		O	
Rallye bar	O		O		O		O		O		O		O		O		O		O		O	
Brush guard	O		O		O		O		O		O		O		O		O		O		O	
Chrome bumper	O		O		O		O		O		O		O		O		O		O		O	
White tube bumper	O		O		O		O		O		O		O		O		O		O		O	
Stainless steel mirrors	O		O		O		O		O		O		O		O		O		O		O	
White spoke wheels	O		O		O		O		O		O		O		O		O		O		O	

single side door and double extra wide rear doors. Ideal for plumbing, electrical contractors, vending machine supplies, repair services, food delivery and the list goes on.

**Econovan.** Made of heavy duty aluminum extrusions and fibreglass reinforced plywood, this body comes complete with 127 mm plywood floor with steel reinforcements, roll up rear door, and a useable interior height of 161 cm.

**Diesel.** A dynamite deal! On power. On

economy. And on comfort, because Datsun has the features that make all the difference.

Datsun's superb four cylinder 2.2 litre (SD22) gives all the power you need in a choice of models. And economy! Whoever heard of a truck that gets combined city/highway of 43 MPG!

But that isn't all, Datsun was the first to bring comfort and convenience. An independent front torsion bar that smooths out the ride. A smooth five speed transmission. Action. Fun. Economy. Power.

**2WD Truck Specifications:** Engine: 2.2 Litre 4 cyl. O.H.C. (Gas). 2.2 Litre O.H.V. (Diesel). Transmission: 4-Speed: Long Box, Regular Box, Cab and Chassis. 5 Speed: King Cab, Long Box Deluxe, King Cab Diesel, Long Box Diesel, Regular Box Diesel. *Optional Automatic:* King Cab, Long Box Deluxe. *Fuel Capacity:* 50 Litres: Long Box, Cab and Chassis 64 Litres. *Brakes:* Front disc, rear drum. *Suspension:* Front: Independent double wish-bone. Torsion bar spring. Rear: Banjo Housing semi elliptical leaf spring. *Wheel Base (MM)* 2815. Regular Box 2575. *Length (MM):* 4750. Regular Box 4360. *Width (MM):* 1610. *Height (MM):* 1555. Long Box 1550.

**4WD Truck Specifications:** Engine: 2.2 Litre 4 cyl. O.H.C. (Gas). Transmission: 4-Speed: Regular Cab and Long Box. 5-Speed: King Cab. *Fuel Capacity:* 60 Litres: Regular Cab and Long Box. 75 Litres: Long Box. *Brakes:* Front disc, rear drum. *Suspension:* Front: Independent double wish-bone torsion bar spring. Rear: Banjo Housing semi elliptical leaf spring. *Front Hub:* Nissan two position, free wheel or locked. *Wheel Base (MM):* 2815. Regular Box: 2575. *Length (MM):* 4750. Regular Cab: 4360. *Width (MM):* 1685. *Height (MM):* 1705. Long Box: 1700.





Dependability. That's what you want in a hard working truck. That's why, before you say diesel, say Datsun.

## 4 x 4

The Datsun 4x4 whets your appetite for adventure! From marsh mud to loose shale to shallow streams or thick pulpy meadow, the rugged and tough Datsun 4x4 can get you in and out of more places than you ever thought possible.

One reason is the independent front suspension that seems to make driving in any situation simple, even on full power. And you have three power-to-drive modes to choose from. One for economy on the highway and two for every type of terrain you might get into.

Datsun offers you more in a 4x4 than you ever expected to get from such a rugged camp-by-the-side-of-the-stream vehicle. With a choice of Regular, Long Box, and King Cab, there's a Datsun 4x4 to meet your needs.

But if you're hunting for something special in a 4x4, have a good look at Datsun's new Hustler.

Hustler's got it inside.

Nothing this tough ever looked so good inside the cab. Sport steering wheel, AM/FM stereo, tinted glass all around, carpeting, are the icing on an already sizeable cake. But that's not all. Add side window defoggers for outstanding year round visibility.

Hustler's got it outside.

Hustler knows how to put its best bumper forward in style. White spoke wheels, original striping in complimentary colors, stainless steel mirrors, rally bar, grilleguards and brushguards. All standard on the 4x4.

\*Described in this brochure and shown on the vehicles are some of the many options and accessories offered by Datsun. They're available at extra cost and well worth it in driving comfort and convenience. Nissan Automobile Company (Canada) Ltd., reserves the right to make changes at any time, without notice, in colours, equipment, specifications, prices and models — and also to discontinue models. The right is also reserved to change any specifications, parts or equipment at any time without incurring any obligation to equip vehicles built prior to the date of such change with these items. Other vehicle literature may refer to these Datsuns by the chassis number.

**Warranty:** Nissan / Datsun vehicles are covered against defects in workmanship and materials during the first 20,000 kilometres or 12 months (whichever comes first) of the life of the car.

**Warranty:** upon expiration of the Vehicle Warranty, power train components are covered by a Powertrain Warranty up to a maximum of 40,000 kilometres or 24 months, whichever comes first. Complete details of these limited warranties are outlined in the "Warranty Information Booklet" supplied with every new Nissan / Datsun vehicle.

**Nissan Automobile Company (Canada) Ltd.**  
2233 Argentia Road, Mississauga, Ontario L5N 2X7

**Central & Atlantic Region:**  
177 Snidercroft Road, Concord, Ont. L4K 1B6

**Prairie Region:**  
5716 Burbank Crescent, Calgary, Alta. T2H 1Z6

**Pacific Region:**  
480 Audley Blvd., Annacis Industrial Estate, New Westminster, B.C. V3L 5A1

**Quebec Region:**  
8710 Pascal Gagnon Blvd., Montréal, P.Q. H1P 1Z2

