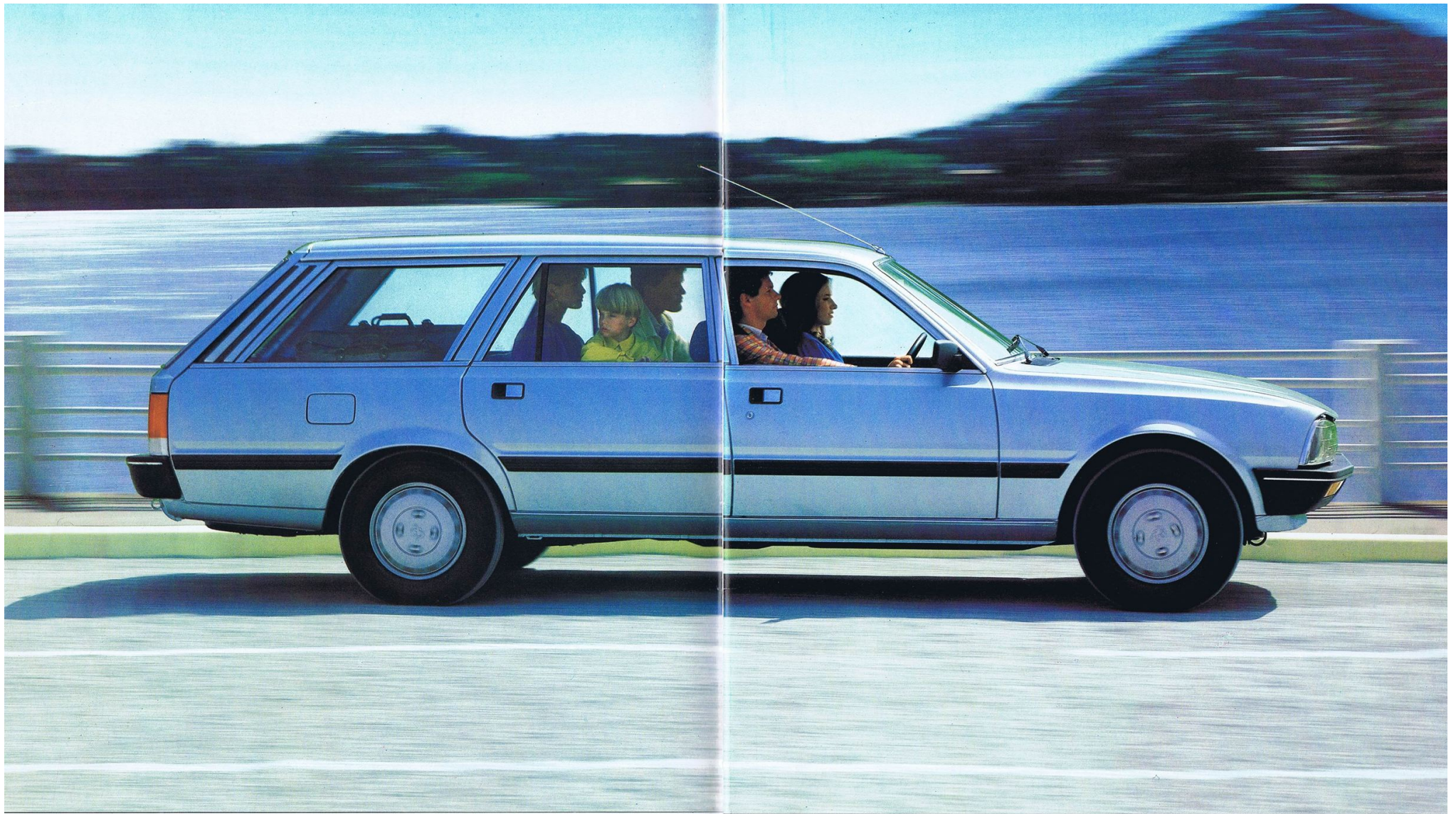


 **PEUGEOT 505** Estate/family







## 505 STYLE

Model illustrated: 505 GR Estate.

Welcome to the beautifully practical world of the Peugeot 505 Estate and Family. The Estate seats five while the Family will comfortably seat eight — and carry all their luggage.

But this is no stretched saloon. Peugeot design estates as estates with no compromises. Every inch is dedicated to increasing their comfort and load versatility. The long 114"

wheelbase, 6" more than the 505 Saloon, makes for a very smooth ride and ease of handling, even when fully loaded.

There are five models, petrol or diesel, Estate or Family. One is exactly right for you. A lively asset to your business. A very real enhancement of your lifestyle. Certainly the best Estate and Family value on the road today. There's even plenty

of room for the dog.

All models are fitted with a 5-speed gearbox, a new feature on the 1985 GL and all except the GL have power assisted steering as standard. The combination of front and rear coil spring suspension, irons out those irritating road irregularities.





## 505 PRACTICAL ESTATE

This is the real thing. The most adaptable large Estate on the European market. Plenty of room to carry five people in great comfort. Superb finish and the many luxury features fitted as standard put this handsome car right at the top of its class.

The huge counterbalanced rear door lifts and the rear seats fold down to open up a load platform over 91" long,

Models illustrated: 505 GR and GL Estate.

45.3" wide and a maximum height of 32.3". That adds up to 79 cu ft of usable loadspace.

With the low floor level and no awkward sill, you just load your luggage onto the floor and push it in. No Estate has ever made it easier for you to move people and luggage around in such quiet cushioned comfort. Trust Peugeot to find a better way to provide exactly what you want.







## 505 FAMILY EXPRESS

From the outside the Family looks deceptively like the Estate — but there's a lot more inside. A third row of forward facing seats means that eight people can all travel comfortably together.

But that's not all. The inside space can be used in many different ways. If you fold down the third row of seats you increase the load area. The second row seats are split and can

be folded down one third, two thirds or all the way. So you can vary the seating and the load capacity at will.

The 505 is the only Family to offer saloon car comfort for up to eight people combined with quick and easy estate conversion up to 67.8 cu ft of luggage space. With eight on board there is still over 21.0 cu ft for all their luggage.

The load compartment width and height are the same

as the 505 Estate models and although the third row of seats results in a reduced maximum floor length, there still remains an amazing 81.1".

It makes you wonder how you managed until now. Even fully loaded, Peugeot power makes light of every Family outing.



## ACTIVE AND PASSIVE SAFETY

Safety, both active and passive, is a key requirement in the original design of all Peugeot models.

### ACTIVE SAFETY

Active safety is best described as those elements in the vehicle design which help you avoid being involved in an accident, whereas passive safety is the protection you enjoy within the driving compartment.

The 505 Estates front suspension is independent with coil springs and double acting telescopic hydraulic shock absorbers with an anti-roll bar. Coil springs and telescopic shock absorbers are also used on the rear. The suspension has been finely tuned to guarantee excellent roadholding.

The braking system is equally sophisticated for maximum stopping power. It is a servo-assisted split circuit system with discs on the front and drums on the rear. A rear brake compensator valve on all models ensures automatic adjustment of pressure applied to rear brakes, thus preventing premature wheel locking. There is even a warning light on the fascia which lights up to indicate low brake fluid level or brake pad wear, as well as a separate handbrake warning light.

These engineering features contribute to your safety.

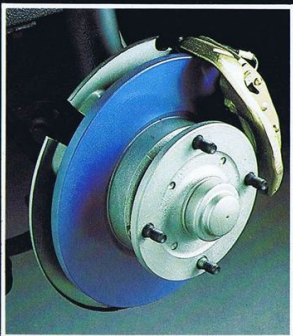
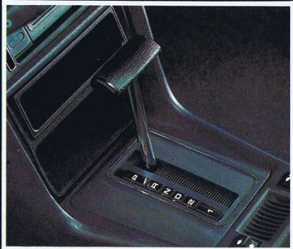
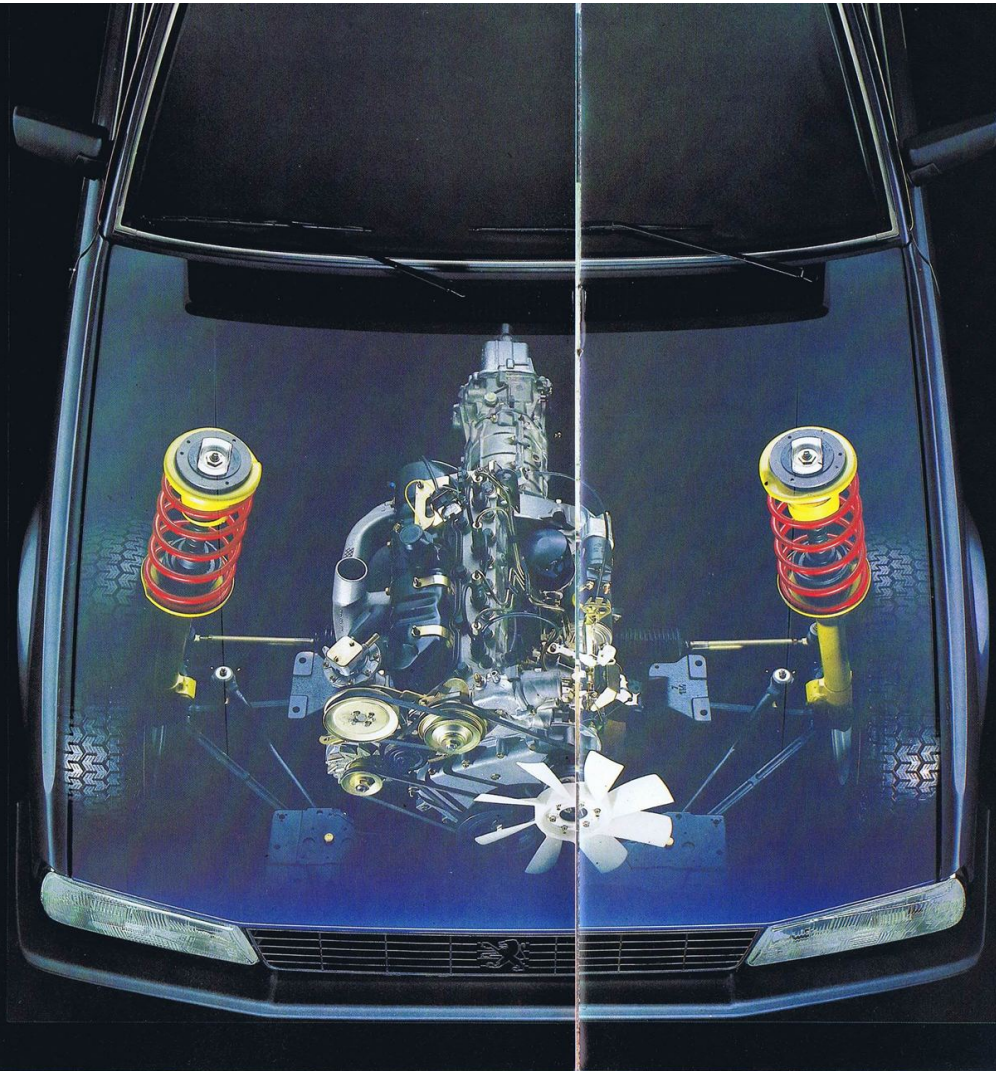
### PASSIVE SAFETY

Passive safety is that which minimises the consequences of an accident in which you may be involved. On the 505 Estates the front and rear ends of the body shell are designed to absorb impact through progressive deformation of the structure, with maximum protection of the passenger compartment.

Another aspect is the two spoke safety steering wheel which is mounted on a collapsible energy-absorbing steering column.

Finally interior appointments are designed in such a way as to eradicate all sharp edges on the fascia panel.

Safety is a key feature.



## ENGINEERING TECHNOLOGY

### ENGINES: PETROL OR DIESEL

Strength, durability, quiet running and modest demands on fuel are all features of Peugeot petrol and diesel engines. Both power units have four cylinders and a five bearing crankshaft with an aluminium alloy cylinder head.

The 1971 cc twin choke petrol engine in the GL, GR and Family models develops 96 bhp PS-DIN at 5200 rpm. Maximum

torque of 119 lb ft DIN at 3000 rpm makes a very responsive engine that can achieve up to a remarkable 40 mpg when linked with the 5-speed gearbox.

At a constant 75 mph up to 29.4 is the norm and in simulated urban driving up to 24.8, an excellent return for a large estate car that can carry eight people including the driver.

The 2498 cc diesel engine fitted to the GLD and Family Diesel models produces 76 bhp PS-DIN at 4500 rpm and 111 lb ft DIN torque at 2000 rpm. The real strength of this diesel power unit is in its excellent fuel economy, where at a constant speed of 56 mph over 44 mpg can be achieved. Reliability, absence of vibration, smooth and easy starting using special pre-heat

plugs, are all features of this remarkable Peugeot diesel.

Peugeot are undisputed leaders in the design and manufacture of diesel engines. With over 50 years experience behind them and over 2 million units produced it is not surprising that Peugeot diesels have consistently been used as original equipment in cars of other than Peugeot manufacture.



# 505 GL/GLD ESTATE

## 1971cc PETROL ENGINE 2498cc DIESEL ENGINE

In the 1985 GL Estate the 1971 cc twin choke petrol engine with 5-speed synchro gearbox develops 96 bhp PS-DIN. It can achieve a maximum speed of around 100 mph.

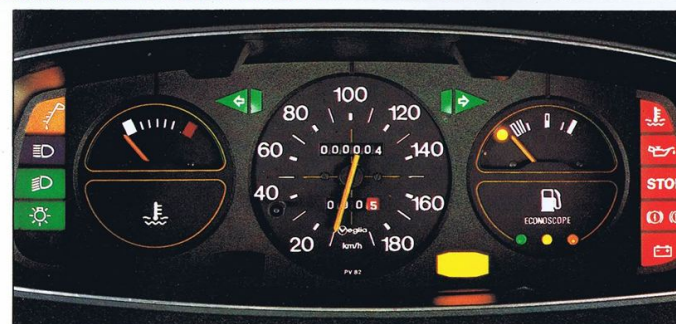
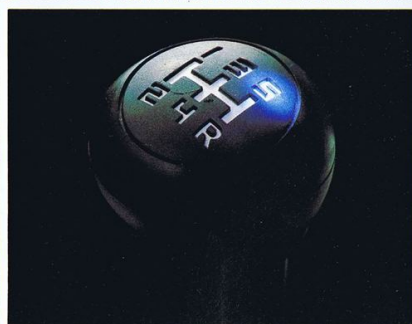
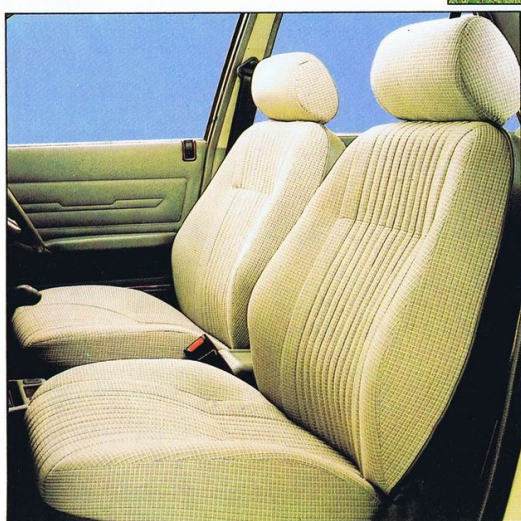
Using the econoscope, a continuous light display on the fascia, the careful driver can tell when he is using petrol most effectively. The GL can achieve up to 40 mpg at a constant 56 mph.

The GLD version has the 76 bhp PS-DIN 2498 cc diesel that develops 111 lb ft torque at 2000 rpm. It has a 5-speed synchro gearbox and power assisted steering. It is possible to achieve up to 44.8 mpg at a constant 56 mph.

Whether you choose petrol or diesel, there is nothing basic about the GL/GLD. It can comfortably seat five people and still carry up to 39 cu ft of load. The seats are cloth trimmed, front reclining. There is a cigar lighter, a glovebox and a push button radio with twin speakers. The fascia has comprehensive warning lights, instruments and a control for adjusting the headlamps according to the load being carried.

Safety features include laminated windscreen with 2-speed electric wash/wipe, dual circuit servo assisted braking, tailgate wash/wipe, heated rear window and rear fog lamps and reversing lamps.

The GL/GLD gives you a big powerful estate for your money.



**505 GL/GLD  
ESTATE**



# 505 GR ESTATE, FAMILY AND FAMILY DIESEL

## 1971cc PETROL ENGINE 2498cc DIESEL ENGINE

The GR has the same 96 bhp PS-DIN petrol engine as the GL but the whole car is equipped to a higher level of luxury and refinement.

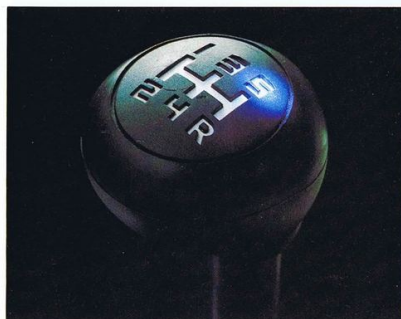
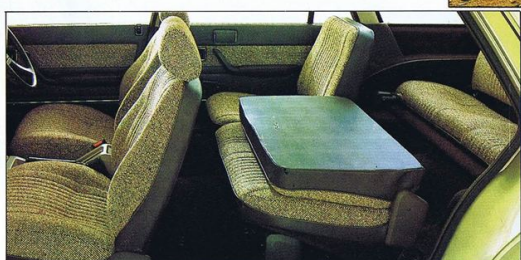
Tinted glass all round. Electric front windows. There are protective bodyside mouldings and full wheel covers. Halogen headlamps and central locking of doors and fuel filler flap. The seats are upholstered in tweed cloth and there's tufted carpet right through to the load area.

In addition to the econoscope the fascia includes a rev counter and a digital clock. There's a digital radio stereo cassette with four speakers.

Extra details include an illuminated ignition keyhole, courtesy lamps front and rear and a lamp in the glovebox. The front doors have bins for maps and both driver and passenger doors feature a remote control rear view mirror.

The luxuriously appointed Family takes on where the GR Estate leaves off. No other car can offer the large family such capacity and ready adaptability to their many needs.

Its three rows of tweed upholstered seats can seat up to eight people in quiet cushioned comfort and still leave room for 21.9 cu ft of luggage — or space for a large dog. To carry five people the third row of seats is folded down and the luggage room increases to 42 cu ft.



**505 GR ESTATE,  
FAMILY AND  
FAMILY DIESEL**



# 505 GR ESTATE, FAMILY AND FAMILY DIESEL

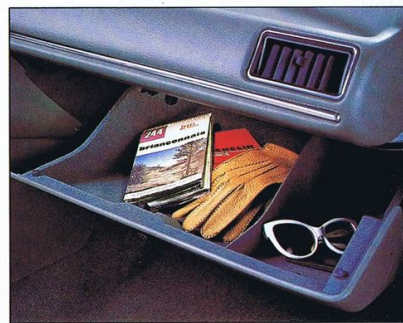
## 1971cc PETROL ENGINE 2498cc DIESEL ENGINE

The middle row of seats can be divided so that you can fold down one or two thirds to accommodate long loads or put a carrycot on the floor. The whole seat folds down to open access to the maximum load capacity.

The centre console ducts warm air to the centre row footwells. Peugeot suspension makes for a very smooth ride and the power assisted steering makes even the fully loaded Family easy to handle under all conditions. Lavishly equipped, the GR and Family models are a joy to drive. All three models are available with black or metallic paint as an option at extra cost. On the GR and Family petrol model a three speed automatic gearbox is also available at extra cost.

The Family petrol version has the 96 bhp PS-DIN engine and its instrumentation includes an econoscope. The 2498 cc 76 bhp PS-DIN diesel can achieve the remarkable economy of up to 44.8 mpg at a constant 56 mph.

Whichever version you choose, as executive transport or family express, nothing can touch the Peugeot 505 Estate or Family for comfort, reliability, safety and sheer value for money.



**505 GR ESTATE,  
FAMILY AND  
FAMILY DIESEL**



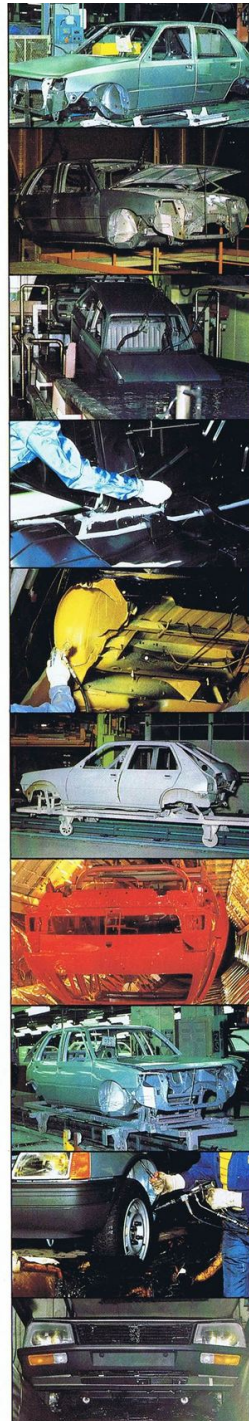
# 6 YEARS' ANTI-CORROSION WARRANTY

All Peugeot cars have the benefit of a six years' anti-corrosion warranty against perforation of all body and underbody panels and each unit is meticulously treated against permanent spread of corrosion by total immersion in a cathaphoretic bath—a process which makes the body shell particularly resistant to corrosion.

But Peugeot's answer to corrosion is not confined solely to this technology innovation of anti-corrosive cataphoresis. Used in addition are eight other processes which add up to 50 lbs of well established anti-corrosion coatings of proven resistance value, and these are applied before and after the cathaphoretic bath.

To benefit from this warranty involves only two checks of the car (taking about 2 hours depending on model, carried out at the expense of the customer at the end of the second and fourth years of service) at a Peugeot Talbot Dealer. This 6 year anti-corrosion warranty is transferable on change of ownership.

You thus have further proof, were it needed, that you may regard the purchase of your Peugeot as a good investment.



are thoroughly degreased to remove oil deposited during the press operation and to ensure full adhesion of the protective finishes. Corrosion resistant zinc or galvanised plated panels are used in vulnerable areas or areas that would be difficult to protect after assembly.

**2. PHOSPHATING:** This gives protection against impacts and flaking; it also improves the adhesion of the resin film in the cathodic bath. Some box sections are cleaned and phosphated before the body shell is assembled.

**3. CATHAPHORETIC BATH:** This deposits a corrosion-proofing epoxy film 15 to 20 microns thick on the whole body shell. Box sections are pierced to assure the protection of internal surfaces.

**4. JOINT SEALING:** Sealing between adjacent panels is assured by mastic sealing strips on the inside and outside.

**5. CRACKLE FINISH ANTI-CHIPPING COMPOUND (PVC):** Oven baked, this ensures protection to the parts of the body that are subject to abrasion from road chippings and stones (the coat is 1 to 2 mm thick).

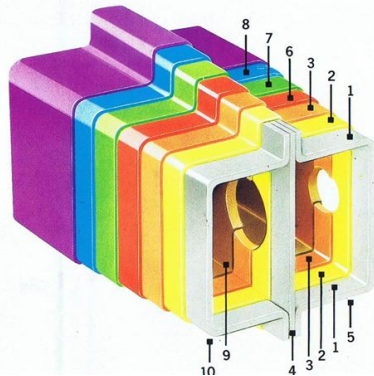
**6. PRIMER:** The paint undercoat includes rust-inhibiting pigments (zinc chromate) to further improve the anti-corrosion protection. This special, flexible primer also has anti-chipping properties.

**7. ACRYLIC LACQUER:** This thermosetting paint is baked at 130°C, the fast evaporation of the solvents giving a coat with high protective quality.

**8. CLEAR VARNISH:** Applied on top of metallic and black paints, this gives an increased brilliance and ensures protection of the colour pigment from the corrosive elements.

**9. WAX:** Pressure injected into the box sections, wax protects these inner surfaces and prevents water ingress between the panels.

**10. THICK WAX AND BITUMEN COMPOUND:** This is sprayed on to the underside of the body—including the wheel arches and suspension.



# UNIQUE TRIPLE COVER

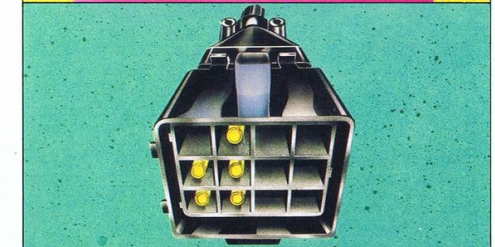
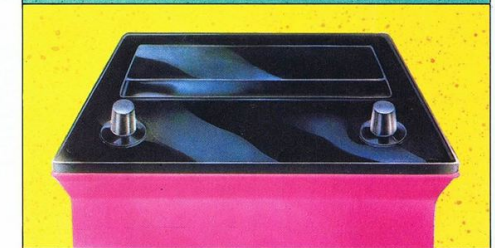
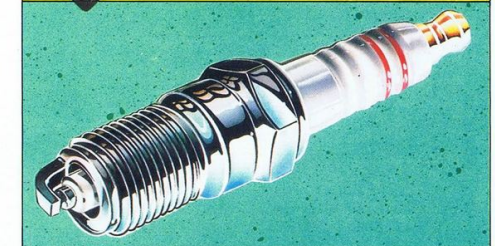
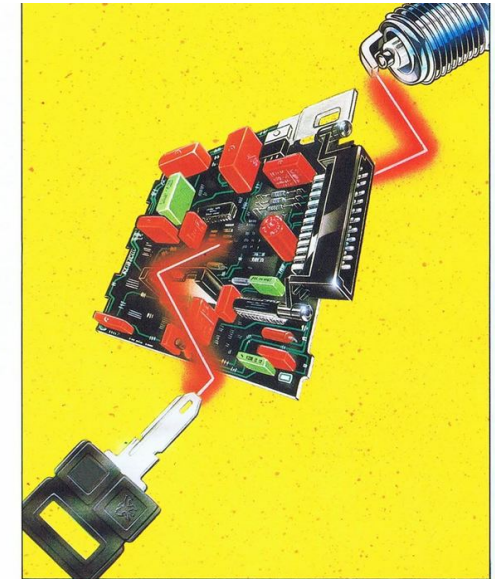
In addition to the 6 year anti-corrosion warranty all Peugeot cars described in this catalogue are covered by an unlimited mileage warranty during the first twelve months including both parts and labour, together with free breakdown recovery, should it ever be needed. In addition, for the same period there is the benefit of the unique Extra Care Policy, providing free replacement of certain wearing parts, like brake pads and clutches, if they require replacement as a result of normal wear. The Extra Care Policy does not cover cars used for Police and taxi work. Cars used for competitions are also excluded from the benefits of the warranty and Extra Care Policy.

Your Peugeot Talbot Dealer will be pleased to explain the terms and conditions of this unique triple cover.

As a Peugeot Owner you have the support of more than 500 Dealers in this country—and if you take your car abroad, some 5,000 in Europe—all with special expertise gained from factory training and aided by special tools and equipment to ensure efficient and effective attention.

Naturally, your Dealer's efforts start before you see your car. He carries out a careful check under our Road-Ready programme to make sure your new car is as it should be.

All Peugeot Talbot Dealers in the United Kingdom are bound by our Service Charter, designed to give you, the Customer, a fair deal in all circumstances. Their knowledge and skill are at your disposal—willingly and cheerfully.



# EXTENDED MAINTENANCE

Peugeot are constantly endeavouring to improve their product offering and reliability through their extended maintenance programme which includes

1. Electronic ignition which on petrol engine models eliminates the need for contact breaker points and provides instant starting in cold and wet weather conditions, as well as maintaining peak performance between major service intervals.
2. Copper cored spark plugs which maintain a higher and more consistent performance.
3. Low maintenance battery.
4. Diagnostic socket contributes significantly to speedy checking and adjustment of engine tune, detecting elements of the engine not working at full efficiency.
5. Low engine oil level warning light.
6. Water temperature warning light.
7. Brake wear warning light.



SPECIFICATIONS	GL	GLD	GR	FAMILY	FAMILY DIESEL
<b>ENGINE</b>					
Cubic Capacity	1971 cc	2498 cc	1971 cc	1971 cc	2498 cc
Numbers of Cylinders	Four. Five bearing crankshaft with aluminium alloy cylinder head.				
Bore/stroke (mm)	88 X 81	94 X 90	88 X 81	88 X 81	94 X 90
Maximum power BHP (PS-DIN)	96 at 5200 rpm	76 at 4500 rpm	96 at 5200 rpm	96 at 5200 rpm	76 at 4500 rpm
Maximum Torque MKG (lb ft) DIN	16.4 (119) at 3000 rpm	16.3 (111) at 2000 rpm	16.4 (119) at 3000 rpm	16.4 (119) at 3000 rpm	16.3 (111) at 2000 rpm
Compression Ratio	8.8:1	23:1	8.8:1	8.8:1	23:1
Electronic Ignition	●		●	●	
Diagnostic Socket	●	●	●	●	●
Battery	12V/45 Ah	12V/60 Ah	12V/45 Ah	12V/45 Ah	12V/60 Ah
Cooling	Water cooled, closed circuit with expansion bottle. Electrically operated cooling fan.				
<b>TRANSMISSION</b>					
Gearbox: Manual 5-speed	●	●	●	●	●
3-speed automatic			X	X	
<b>STEERING</b>					
Rack and pinion power assisted (not GL)	●	●	●	●	●
Turning Circle (between kerbs)	11.1m (36.4 ft.)		11.2m (36.75 ft.)		
<b>SUSPENSION</b>					
Front	Independent coil springs with anti-roll bar and double-acting hydraulic shock absorbers.				
Rear	Coil springs and double-acting hydraulic shock absorbers.	Coil springs with anti-roll bar and double-acting hydraulic shock absorbers.			
<b>BRAKES</b>					
	Split circuit with load compensator valve.				
Front: Disc	●	●	●	●	●
Rear: Drum	●	●	●	●	●
Servo assistance	●	●	●	●	●
<b>DIMENSIONS</b>					
Overall length	4.90m (192.8 in.)				
Overall width	1.73m (68.1 in.)				
Wheelbase	2.90m (114.2 in.)				
<b>WEIGHT</b> kg (lbs)					
Kerb weight	1270 (2800)	1355 (2987)	1270 (2800)	1310 (2880)	1415 (3120)
Max. towing weight (braked trailer)	1500 (3307)	1500 (3307)	1500 (3307)	1500 (3307)	1500 (3307)
<b>FUEL TANK CAPACITY</b>					
	70 litres (15.4 gallon)				
<b>LOAD AREA CAPACITY</b>					
Load floor length: seats up	1.38m (54.3 in.)		0.72m (28.3 in.)		
seats folded	2.32m (91.3 in.)		2.06m (81.1 in.)		
Load floor width	1.15m (45.3 in.)				
Load compartment height	0.82m (32.3 in.)				
Load floor area: seats up	1.68m <sup>2</sup> (18.1 sq. ft.)		0.92m <sup>2</sup> (9.9 sq. ft.)		
seats folded	3.03m <sup>2</sup> (32.6 sq. ft.)		2.65m <sup>2</sup> (28.5 sq. ft.)		
Load compartment capacity: seats up	1112 DM <sup>3</sup> (39.6 cu. ft.)		620 DM <sup>3</sup> (21.9 cu. ft.)		
seats folded	2240 DM <sup>3</sup> (79.0 cu. ft.)		1920 DM <sup>3</sup> (67.8 cu. ft.)		
<b>TYRES</b>					
	185/82 SR 14				
<b>INSTRUMENTS</b>					
Speedometer with odometer	●	●	●	●	●
Trip recorder	●	●	●	●	●
Fuel gauge	●	●	●	●	●
Water temperature gauge	●	●	●	●	●
Rev. counter			●	●	●
Econoscope	●		●	●	
<b>FASCIA WARNING LIGHTS</b>					
Handbrake	●	●	●	●	●
Low brake fluid level	●	●	●	●	●
Low oil pressure	●	●	●	●	●
Low oil level	●	●	●	●	●
Low fuel level	●	●	●	●	●
Battery charge	●	●	●	●	●
Water temperature	●	●	●	●	●
Break-down/stop (water/oil/brakes)	●	●	●	●	●
Brake pad wear	●	●	●	●	●
Pre-heater		●			●
Water in diesel fuel		●			●

SPECIFICATIONS	GL	GLD	GR	FAMILY	FAMILY DIESEL
<b>EXTERIOR</b>					
Driver's remote control door mirror			●	●	●
Passenger's remote control door mirror			●	●	●
Hazard warning flashers	●	●	●	●	●
Halogen headlamps	●	●	●	●	●
Load adjustable headlamps	●	●	●	●	●
Reversing lamps	●	●	●	●	●
Rear fog lamps	●	●	●	●	●
Laminated clear windscreen	●	●			
Tinted glass and laminated windscreen			●	●	●
2-speed windscreen wipers	●	●	●	●	●
Electric windscreen wash	●	●	●	●	●
Heated rear window	●	●	●	●	●
Intermittent windscreen wipe	●	●	●	●	●
Electric front windows			●	●	●
Tailgate wash/wipe	●	●	●	●	●
Central door locking and fuel filler flap			●	●	●
Hub caps	●	●			
Full wheel covers			●	●	●
Protective bodyside mouldings			●	●	●
Metallic paint			X	X	X
Black paint	X	X	X	X	X
<b>INTERIOR</b>					
Dipping rear view mirror	●	●	●	●	●
Sunvisors with passenger vanity mirror	●	●	●	●	●
Interior courtesy lamp	●	●			
Front and rear courtesy lamps			●	●	●
Panel light rheostat			●	●	●
4-speed heater/blower	●	●	●	●	●
Face level ventilation	●	●	●	●	●
Side window demist	●	●	●	●	●
Illuminated heater controls	●	●	●	●	●
Illuminated ignition keyhole			●	●	●
Cigar lighter	●	●	●	●	●
Centrè console	●	●	●	●	●
Glovebox with lid	●	●	●	●	●
Glovebox lock	●	●	●	●	●
Glovebox lamp			●	●	●
Push button radio	●	●			
Digital radio/stereo cassette with four speakers			●	●	●
Childproof rear door locks	●	●	●	●	●
Soft rim steering wheel	●	●	●	●	●
Elasticated pockets behind front seats			●	●	●
Reclining front seats	●	●	●	●	●
Fully upholstered front seat head restraints	●	●	●	●	●
Inertia reel front seat belts	●	●	●	●	●
Split fold down rear seat			●	●	●
Fold down third row seat			●	●	●
Zigzag cloth seat trim	●	●			
Tweed cloth seat trim			●	●	●
Cloth inserts on door trim pads			●	●	●
Carpet door kick pads			●	●	●
Interior floor carpet	●	●	●	●	●
Vinyl load area covering	●	●			
Carpet load area covering			●	●	●
Load area lamp	●	●	●	●	●
<b>FUEL CONSUMPTION</b>					
	GL	GLD	GR/FAMILY MANUAL	GR/FAMILY AUTO	FAMILY DIESEL
Constant speed driving 56 mph (90 kph)	40.4 (7.0)	44.8 (6.3)	40.4 (7.0)	35.3 (8.0)	44.8 (6.3)
Constant speed driving 75 mph (120 kph)	29.4 (9.6)	32.5 (8.7)	29.4 (9.6)	26.9 (10.5)	32.5 (8.7)
Simulated urban driving	24.8 (11.4)	30.4 (9.3)	24.8 (11.4)	25.7 (11.0)	30.4 (9.3)
These mpg figures are the results of approved tests as recorded by the Department of Transport in official fuel economy certificates. Figures in brackets are L/100km.					
<b>INSURANCE GROUP</b>					
As recommended by the Accident Offices Association	5	4	5	5	4

Standard equipment ● Options at extra cost X





# PEUGEOT

For details of Diplomatic & Export Sales contact Peugeot Talbot Exports, Devonshire House, 74-75 Piccadilly, London W1. Tel: 01-499 5533. It is our continual policy to improve our vehicles in every way and so whilst the details set out in this brochure were correct at the time of going to press, we are unable to guarantee that no changes in specification have subsequently taken place. We therefore reserve the right to alter the specification at any time without notice.

Issued by—Sales Promotion Dept., Peugeot Talbot, International House, Bickenhill Lane, Marston Green, Birmingham

October 1984