

THE 1991
FORD OF CANADA
CAR COLLECTION

THE 1991 FORD OF CANADA CAR COLLECTION

FORD & MERCURY	FORD	MERCURY	LINCOLN	NEW FOR 1992
FESTIVA	MUSTANG	TRACER	MARK VII	MERCURY GRAND MARQUIS
ESCORT	PROBE	TOPAZ	CONTINENTAL	FORD CROWN VICTORIA
AEROSTAR WAGON	TEMPO	SABLE	TOWN CAR	
EXPLORER	TAURUS	COUGAR		
	THUNDERBIRD			



Available at your Ford or Mercury/Lincoln dealer.

Ask your dealer: Following the publication of this catalogue, certain changes in standard equipment, options, prices or product delays may have occurred which would not be included in these pages. Ford Motor Company of Canada, Limited, reserves the right to make these changes without incurring obligations of any kind. Your dealer is your best source for up-to-date information.



Festiva LX shown in White. Some features shown may be optional.

FESTIVA There are three things you can expect from the 1991 Festiva. Fun, fun, and fun. Fun, because Festiva has 2,438 litres (86.1 cubic feet) of interior passenger space. Perfect for all your friends. Fun, because you'll save lots of

money with its economical 1.3L EFI 4-cylinder engine. Standard on both the L and LX models. And fun, because Festiva is available in six highly individual exterior striping packages offered at no extra cost. What fun!

1991 FORD & MERCURY

ESCORT The all-new 1991 Escort offers world-class performance and styling in a selection of models.

There's the LX 2-door and 4-door hatchback, the 4-door wagon, and then for the real sports fans, there's the GT.

The GT comes equipped with a sensational 16 valve 1.8L dual-overhead-cam 4-cylinder engine. This performer is capable of 0-100 km/h in a mere 8.3 seconds. That's best in class.

The other Escort models feature a 1.9L EFI 4-cylinder overhead-cam engine.

Naturally, all models have computer-controlled multi-port fuel-injection systems.

Were you expecting something else?



Escort LX 4-door hatchback, 2-door hatchback and 4-door wagon in Light Titanium Clearcoat Metallic, Escort GT in Bright Red. Some features shown may be optional.



**1991 FORD
&
MERCURY**

EXPLORER The 1991 Explorer is the ideal vehicle to escape the concrete jungle.

It's powered by a spirited 4.0L EFI V6, and it's available in 2-door or 4-door body-styles and in either 4x2 or "Touch Drive" 4x4. So, it's per-

fectly suited to any terrain it faces.

Including city streets.

And that's because Explorer is styled in a contemporary, aerodynamic fashion. You can see that in all the different models: the XL, Sport, XLT, and the more luxurious

Eddie Bauer model.

To complement Explorer's sleek exterior, you'll find an ergonomically designed, yet comfortable and spacious interior.

With this type of form, getting away from it all is easy.

Eddie Bauer Explorer 4-door in unique two-tone Twilight Blue Clearcoat Metallic and Light Sandalwood. Some features shown may be optional.

Aerostar Eddie Bauer Extended Wagon in two-tone Deep Emerald Green Clearcoat Metallic and Light Sandalwood Clearcoat Metallic. Some features shown may be optional.

AEROSTAR WAGON The 1991 Aerostar is the mini-van of choice.

And we're not just talking about its quality build and advanced design. We also mean its availability in a wide selection of models.

First, there's the regular

Aerostar, for regular families.

Then there's the extended-length Aerostar, for extended families.

Add to that a choice of either 2-wheel or electronic 4-wheel drive, and a choice of either a 3.0L or 4.0L EFI V6 engine.

On top of that, Aerostar features a range of seating capacities from five to seven persons.

And to cap it all, there's a choice of the XL, XLT or Eddie Bauer models.

No wonder they call the Aerostar the mini-van of preference.



**1991 FORD
&
MERCURY**



MUSTANG For 25 years one name has stood for power and performance at an affordable price. Mustang.

Today, this legend lives with all the muscle of yesterday together with contemporary technology.

It's available in three 2-door models—the sedan, hatchback and convertible—and three series.

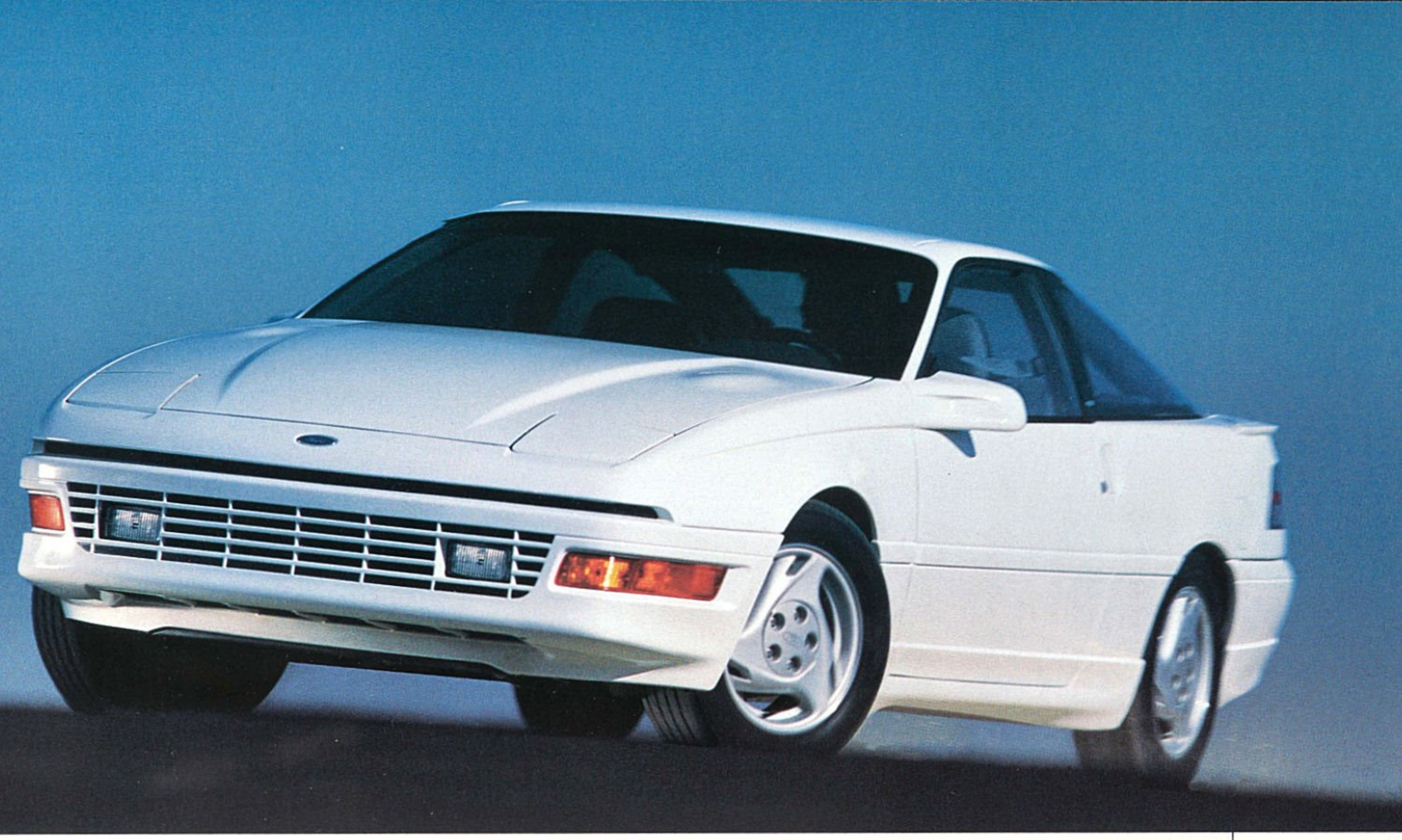
The LX is powered by a strong 2.3L 4-cylinder engine equipped with twin plugs per cylinder and multi-port electronic fuel-injection.

While the Cobra GT comes with an altogether different engine. A 5.0L V8 capable of thrusting out 225 horses.

The same engine is also available on the LX 5.0L. With this kind of power, this legend is definitely alive and kicking today.

The Mustang Cobra GT hatchback is shown above in Bright Red. Some features shown may be optional.

Probe GT in Oxford White. Some features shown may be optional.



PROBE In the 1991 Probe you have power and style successfully united under one roof.

And you also have a choice of engines, available in three different models.

The GL is equipped with a

sophisticated 2.2L EFI I2 valve 4-cylinder engine.

The LX offers you more power, with a 3.0L EFI V6.

And then comes the GT. The bullet. This car boasts a steamy 2.2L EFI 4-cylinder turbo-charged/

intercooled engine with plenty of the appropriate technology to boot.

For example, an Anti-lock Brake System.

With Probe's performance and style, there is definitely no ceiling on your enjoyment.

1991
FORD



TEMPO The 1991 Tempo has more going for it than any other mid-size car on the road.

For starters, it has an optional driver-side air bag (SRS), available on the GL and LX 4-door models. There's also plenty of choice,

with the L, GL, LX, Four-Wheel Drive, and the sporty GLS models. The L, GL and GLS are available in 2-door or 4-door body-styles.

Under the hoods of the L, GL and the LX is a nifty 2.3L EFI engine with a special High Swirl Combustion

(HSC) design. The Tempo GLS and Four-Wheel Drive models are powered by a 2.3L EFI High Specific Output (HSO) powerplant.

But the most important thing about the Tempo, is simply its outstanding value for money.

Tempo LX 4-door in Bright Regatta Blue Metallic. Some features shown may be optional.



Taurus LX in Titanium Frost Clearcoat Metallic. Some features shown may be optional.

TAURUS Let's put it this way. We had to build extra shelves to accommodate all Taurus' awards. It's been acclaimed internationally. And, it's also been on *Car & Driver's* Ten Best List not once, but five times. The 1991 Taurus is

¹Optional on other models.

available in several models.

First, there's the L and GL, wagon or sedan. They come with a strong 3.0L V6 engine. Moving up a series is the LX sedan with its 3.0L V6, and the LX Wagon with its 3.8L V6.¹

And then, to cap it all, comes the Taurus SHO sedan, with its 3.0L 24 valve DOHC V6.

Standard on all models, is a driver-side air bag (SRS).

Taurus. It's one of the most decorated cars on the road.

1991
FORD



1991 FORD

THUNDERBIRD One of the most famous cars in automotive history has never been mightier than it is today.

The 1991 T-Bird. Sleek. Fast. It's available in three models.

The Standard and luxurious LX.

They come with a potent 3.8L SEFI V6 engine. A 5.0L HO SEFI V8 is available as an option.

And then, for performance purists, there's the Super Coupe. This car comes with an almighty super-charged intercooled 3.8L EFI V6.

With a capacity of 210 horses, the Super Coupe definitely embodies the spirit of the '56 T-Bird, only with the technology of '91.

Thunderbird Super Coupe shown in Titanium Frost Clearcoat Metallic. Some features shown may be optional.



Tracer LTS featured in Black. Some features shown may be optional.

TRACER Welcome to a new dimension in cars.

The 1991 Tracer 4-door sedan. Big and luxurious on the inside, small on the outside.

It has room for five, yet it can squeeze into the tightest parking

spaces. Inside you can relax in ergonomically designed comfort, while on the outside, the sleek contoured lines cut through the air with ease.

Power is provided by a 1.9L EFI 4-cylinder engine on the Standard model. And by a sporty 1.8L EFI

4-cylinder 16 valve double-overhead-cam engine on the LTS.

Through its design and through its technology, Tracer has the capacity to impress you.

1991 MERCURY



**1991
MERCURY**

TOPAZ You get a lot more in a Topaz. More features, more technology and certainly more choice.

To begin with, you can choose between five models. The top-of-the-line LTS, the luxurious LS, the sporty XR5, and the more economical GS and L. On top of that,

Topaz also comes with two different engines, depending on the model.

Either a 2.3L EFI High Specific Output (HSO), or a 2.3L EFI High Swirl Combustion engine (HSC).

Plus, you have the option of four-wheel drive on all 4-door models except the L. An optional

driver-side air bag (SRS) is available on the GS, LS and LTS 4-door models.

But, perhaps the greatest choice of them all is the freedom to get all this and not spend a fortune. Topaz does, after all, offer great value.

Topaz LTS shown in Oxford White and Medium Titanium Clearcoat Metallic. Some features shown may be optional.



Sable LS Plus in Medium Titanium Clearcoat Metallic. Some features shown may be optional.

SABLE *Car & Driver* called Sable "One of the ten best inspired designs of all time."

And, it's not difficult to see why. One look at the sleek aerodynamic profile and you'll understand why this car has been turning so many heads.

Equally handsome is the well-appointed interior. Naturally, there's plenty of room to seat six. And naturally, Sable has the latest in safety features. A driver-side air bag (SRS) is standard on all models. The 1991 Sable is available in either the

GS or LS model, wagon or sedan.

Both models come with a standard 3.0L SEFI V6, or an optional 3.8L SEFI V6.

With either one, you'll be driving a car that's changed the way people think about automotive design.

**1991
MERCURY**



**1991
MERCURY**

COUGAR There's no need to get stuck with a dog when you can own a cat.

The 1991 Cougar. Agile, sleek, and extremely fast. This car is available in two models.

First, the LS, with its 3.8L SEFI

V6 or optional 5.0L HO SEFI V8. Either engine will give you plenty of assurance to prowl the roads with confidence.

And then the XR7. It's equipped for high-speed performance. Both on the inside, with its

sporty arrangement, and on the outside, with its sleek body-style and powerful engine. A 5.0L HO SEFI V8.

Both models handle the road with a sense of power and grace found only in a predator.

Cougar XR7 in Electric Red Clearcoat Metallic. Some features shown may be optional.



MARK VII The 1991 Mark VII represents an accomplishment of a rare kind. It successfully combines power with distinctive style. Power in the form of its formidable High Output 5.0L SEFI V8. And style, in the form of its highly contoured shape.

It's available in two luxurious models, the LSC and the Bill Blass.

Both feature a driver-side air bag (SRS). And both perform with uncommon finesse.

Above: Special Edition Lincoln Mark VII LSC in Monochromatic Midnight Black Clearcoat.



The Lincoln Card provides you with one of the most comprehensive owner protection programs provided by any luxury vehicle manufacturer in North America or abroad. A three year/80,000 kilometre (whichever comes first) program that covers all scheduled maintenance services as listed in the owner guide, replacement of items necessitated by wear and all repairs that may be necessary due to defects in materials. The Lincoln Card also includes towing and transportation assistance. Damage caused by accidents and abuse, or fluids required between scheduled maintenance intervals, tires, and vehicles in daily rental, are not included in the program. Under the program, the Lincoln Card is also transferable at no charge to those subsequent purchasers who own the vehicle within the program period. After the expiration of your Lincoln Card coverage, the Ford of Canada 6-year/100,000 km major component warranty will come into effect. See your Lincoln dealer for complete details of this limited warranty.

**1991
LINCOLN**



1991 LINCOLN

CONTINENTAL The 1991 Continental is everything a luxury car should be: glamorous, well-appointed, and technically sophisticated. And safe, this car has a driver-side air bag (SRS).

The Continental is an advanced

luxury car that includes an array of impressive innovations, including computer-controlled air suspension and a four-wheel disc Anti-lock Brake System. Needless to say, the interior is richly appointed and distinctively crafted to the highest standards.

Naturally, the Continental is front-wheel drive.

Both the Continental Standard and Signature Series feature a remarkably smooth 3.8L SEFI V6 engine with dual exhaust. This car is truly luxury on an impressive scale.

Lincoln Continental
Signature Series
in Midnight Black
Clearcoat.



For full details on the
Lincoln Card, see page 17.

Lincoln Town Car
Signature Series
in Twilight Blue
Clearcoat Metallic.



For full details on the
Lincoln Card, see page 17.

TOWN CAR Thankfully, luxury may still be obtained on a large scale.

The 1991 Town Car. It's unquestionably one of the roomiest cars on the road, with six-passenger comfort and a trunk of immense proportions.

In addition, Town Car provides

you with the luxury of an uncommonly quiet ride. Compliments of its superior 4.6L EFI V8 engine.

Technological sophistication is also there in abundance with features like a four-wheel disc Anti-lock Brake System, a driver-side air bag (SRS)

and optional traction assist.

The Town Car is available in the luxurious Standard Series, elegant Signature Series and richly appointed Cartier Series. The Town Car is definitely for those who like to be surrounded by luxury.

1991 LINCOLN

**NEW
FOR 1992**

CROWN VICTORIA Presenting the latest Crown Victoria. A luxury car redesigned with state-of-the-art technology.

Its exterior lines have changed, but still flow with the distinguished pedigree of Crown Victoria.

The interior has also been redesigned, but it still has the traditional benefits of a well-appointed and spacious car.

In keeping with tradition, Crown Victoria is equipped with rear-wheel drive. And it's been generously endowed with power. A 4.6L SOHC SEFI V8 engine is available on the S, Standard and LX models.

The 1992 Crown Victoria. It manages to combine the virtues of modern science together with the principles of traditional luxury.

Crown Victoria LX
in Titanium Frost
Clearcoat Metallic.
Some features shown
may be optional.



**NEW
FOR 1992**

GRAND MARQUIS We designed the all-new 1992 Grand Marquis with the intention of taking a grand car, and making it even more grand.

So, we didn't alter the traditional benefits of comfort and size. The interior is still richly appointed and it still has plenty of room for six.

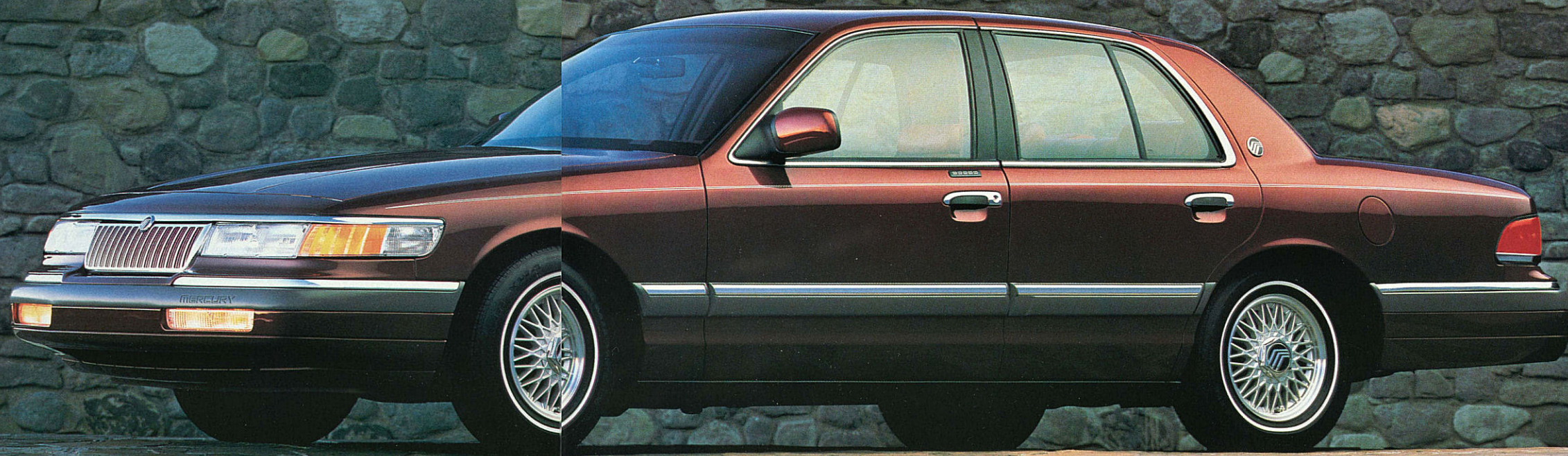
But we did streamline the exterior. Now it's more eye-pleasing than ever.

The renowned power of the Grand Marquis is still there. Only it's more sophisticated. It has an advanced 4.6L SOHC SEFI V8 engine.

The Grand Marquis is available in the GS and LS models. Both are rear-wheel drive.

And both offer luxury on a truly grand scale.

Grand Marquis LS in
Medium Cranberry
Clearcoat Metallic.
Some features shown
may be optional.





Quality is Job 1.