

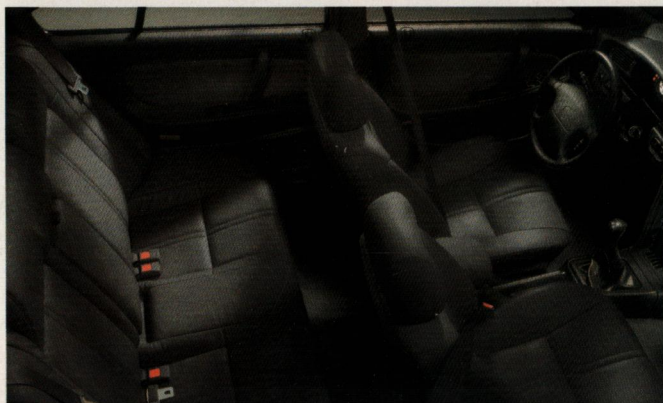
1 9 9 2 C A R S & T R U C K S



N I S S A N



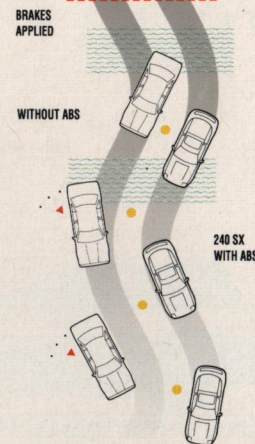
For over 50 years, Nissan has designed and engineered quality cars and trucks with you in mind. And no matter which one you choose, you'll find that it has been invested with the kind of technology and features that address your needs and fulfill your desires. Fresh, contemporary design. A responsive power-plant. A smooth-riding suspension system. And a roomy, well-appointed interior. These are just a few of the things that help make a Nissan a Nissan. From the awe-inspiring 300 ZX to the stylishly versatile Pathfinder, each of our 29 different models delivers the level of performance, handling, innovation and comfort that you require for today's driving. At Nissan, our goal has always been to produce the best product we possibly can. And so, from sports cars that are more exciting and responsive to sedans that feel more comfortable and luxurious, we're constantly working to ensure that owning and driving a Nissan is truly a satisfying experience.



**ADVANCED** engine technology at Nissan includes a variable valve timing system that enables the 300 ZX Turbo to deliver superb power and response at all engine speeds.

**SAFETY** is important. That's why Nissan Canada and your Nissan dealer urge you to be a smart driver and fasten your seatbelt/shoulder belt whenever you drive. Please ask all your passengers to buckle up too, especially children. Seatbelts do save lives.

**CONVENIENCE** and comfort are common threads that run throughout the Nissan product line. Maxima's roomy, driver-engineered interior exemplifies our desire to make driving seem like second nature.



**STABILITY** on the road is important to us and to you. Many of our vehicles offer an Anti-lock Braking System (ABS) to give you enhanced control under severe braking conditions.



**WINNERS** like Nissan Sentra – the only vehicle to capture the Canadian Automobile Association's "Vehicle Durability Award" two years in a row – confirm Nissan's commitment to quality products and service.

**> STYLING** at Nissan means creating vehicles that are as aerodynamically sound as they are aesthetically pleasing. (Stanza XE with Sport Wheel Package shown in Ebony.)



SE Sedan  
Brougham Sedan  
GXE Sedan



### MAXIMA

Performance and luxury come together beautifully in the Nissan Maxima. This year, the SE's new 190-hp 24-valve V6 gives you a more powerful reason to explore this exquisite sedan.

KEY FEATURES	4-Door Sedan		
	GXE	Brghm.	SE
3.0-litre SOHC V6 engine	●	●	
3.0-litre DOHC V6 engine			●
Variable induction dual plenum intake	●	●	● <sup>1</sup>
Nissan Valve Timing Control System			●
5-speed manual overdrive transmission			●
Electronically cont. 4-speed automatic overdrive transmission with lock-up	●	●	●
Stage II sport-tuned suspension	●	●	●
Viscous limited-slip front differential			●
Anti-lock Braking System (ABS)	●	●	●
Aluminum alloy wheels	●	●	●
Power sliding tinted glass sunroof	●	●	●
Reclining front bucket seats	●	●	●
Power multi-adjustable driver's seat	●	●	●
Leather seating surfaces		●	●
Automatic temperature control air cond.	●	●	●
Power windows and door locks	●	●	●
Digital Touch Keyless Entry System	●	●	

KEY SPECIFICATIONS	4-Door Sedan		
	GXE	Brougham	SE
Horsepower (SAE net)	160 hp @ 5200 rpm		190 hp @ 5600 rpm
Torque (SAE net)	182 ft-lbs @ 2800 rpm		190 ft-lbs @ 4000 rpm
Drive configuration	Front engine/front-wheel drive		

EXTERIOR DIMENSIONS (mm)	
Wheelbase	2650
Overall length	4765
Overall width	1760
Overall height	1400
Track width Front/Rear	1510/1490

CAPACITIES & WEIGHTS	
Cargo volume (L)	410
Fuel tank (L)	70
Curb weight (kg)	Man. N/A 1427
	Auto. 1400 1425 1451

TRANSPORT CANADA FUEL CONSUMPTION EST. (L/100 km)			
Manual	Hwy/City	N/A	8.5/11.5
Automatic	Hwy/City	8.4/12.3	8.5/12.3

1-5-speed manual.

SE Sedan  
XE Sedan



### STANZA

Dynamic performance and superb value distinguish this well-appointed 5-passenger family sedan. With a 138-hp engine and 400 litres of cargo space, it offers both responsive performance and versatility.

KEY FEATURES	4-Door Sedan	
	XE	SE
2.4-litre SOHC 12-valve 4-cylinder engine	●	●
Sequential multi-point electronic fuel injection	●	●
5-speed manual overdrive transmission	●	●
Electronically controlled 4-speed automatic overdrive transmission	●	●
Power-assisted rack-and-pinion steering	●	●
Viscous limited-slip front differential		●
4-wheel independent suspension	●	●
Power-assisted front vented disc/rear drum brakes	●	
Anti-lock Braking System (ABS) 4-wheel disc		●
Aluminum alloy wheels	▲	●
Dual power remote-controlled side mirrors	●	●
Power sliding tinted glass sunroof		●
Contoured reclining front bucket seats	●	●
6-way adjustable driver's seat	●	
60/40 split fold-down rear seats	●	
Air conditioning	●	●
Power windows and door locks	●	●
Cruise control	●	●

KEY SPECIFICATIONS	4-Door Sedan	
	XE	SE
Horsepower (SAE net)	138 hp @ 5600 rpm	
Torque (SAE net)	148 ft-lbs @ 4400 rpm	
Drive configuration	Front engine/front-wheel drive	

EXTERIOR DIMENSIONS (mm)	
Wheelbase	2550
Overall length	4570
Overall width	1697
Overall height	1375
Track width Front/Rear	1460/1440

CAPACITIES & WEIGHTS	
Cargo volume (L)	400
Fuel tank (L)	62
Curb weight (kg)	Man. 1243 1303
	Auto. 1273 1333

TRANSPORT CANADA FUEL CONSUMPTION EST. (L/100 km)			
Manual	Hwy/City	7.4/10.6	
Automatic	Hwy/City	7.9/11.4	

Nissan is preferred by some of the world's most demanding drivers — automotive critics. In fact, Nissan models won five places on *Road & Track's*, "Best in Category" list. Consumers have also recognized our reputation for reliability and customer satisfaction by awarding the Nissan Sentra the Canadian Automobile Association's "Vehicle Durability Award" for the last two years. Because we design vehicles to appeal to your common sense and your sense of adventure, it's no wonder that the Nissan lineup has captured more major awards than any other automotive manufacturer in the '90s.

● Standard Equipment.  
○ Optional Equipment.  
△ Dealer-installed Accessory.

N/A=Not applicable.  
Some optional equipment available only as part of group or combined option. See your Nissan dealer for details.



GXE Sedan  
XE Sedan  
DLX Sedan



#### SENTRA

Sentra Sedans offer a rare blend of sporty performance, remarkable efficiency and superb value. Sophisticated and stylish, they rival many European sedans costing thousands of dollars more.

KEY FEATURES	4-Door Sedan		
	DLX	XE	GXE
1.6-litre DOHC 16-valve 4-cyl. engine	●	●	●
Sequential multi-point fuel injection	●	●	●
5-speed manual overdrive transmission	●	●	●
4-speed automatic overdrive transmission w/lock-up		●	●
3-speed automatic transmission w/lock-up	●		
Power-asst. rack-and-pinion steering	●	●	●
Power front disc/rear drum brakes	●	●	●
Power-assisted 4-wheel disc brakes, Anti-lock Braking System (ABS)			●
4-wheel independent suspension	●	●	●
Aluminum alloy wheels			●
Dual power remote-cont. side mirrors		●	●
Reclining front bucket seats	●	●	●
Fold-down rear seat			●
Air conditioning	▲	▲	●
Power windows and door locks			●
Cruise control		●	●
Tilt steering column	●	●	●

KEY SPECIFICATIONS	4-Door Sedan		
	DLX	XE	GXE
Horsepower (SAE net)	110 hp @ 6000 rpm		
Torque (SAE net)	108 ft-lbs @ 4000 rpm		
Drive configuration	Front engine/front-wheel drive		

EXTERIOR DIMENSIONS (mm)	
Wheelbase	2430
Overall length	4326
Overall width	1666
Overall height	1369
Track width Front/Rear	1445/1430

CAPACITIES & WEIGHTS				
Cargo volume (L)	331			
Fuel tank (L)	50			
Curb weight (kg)	Man.	1038	1060	1070
	Auto.	1066	1088	1098

TRANSPORT CANADA FUEL CONSUMPTION EST. (L/100 km)				
Manual	Hwy/City	5.6/8.0	5.6/8.0	5.6/8.0
3-spd auto.	Hwy/City	6.6/8.5	N/A	N/A
4-spd auto.	Hwy/City	N/A	6.0/8.6	6.0/8.6

Sedan



#### SENTRA 'CLASSIC'

As Nissan's value leader, the Sentra 'Classic' combines spirited performance with a level of styling, comfort and convenience you might never expect for such an affordable price.

KEY FEATURES	4-Door Sedan
1.6-litre SOHC 4-cylinder engine	●
Single-point electronic fuel injection	●
5-speed manual overdrive transmission	●
3-speed automatic transmission w/lock-up	●
Power-assisted rack-and-pinion steering	●
Power-assisted front disc/rear drum brakes	●
4-wheel independent suspension	●
Flush-mounted halogen headlights	●
Dual outside mirrors	●
Reclining front bucket seats	●
Cloth seat trim	●
Full carpeting	●
Air conditioning	▲
Power-booster ventilation system	●
Tilt steering column	●
2-speed fixed intermittent windshield wipers/washers	●
Rear window defroster	●
Side window defoggers	●
Centre console	●

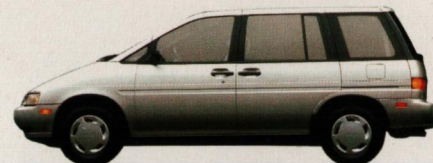
KEY SPECIFICATIONS	4-Door Sedan
Horsepower (SAE net)	70 hp @ 5000 rpm
Torque (SAE net)	94 ft-lbs @ 2800 rpm
Drive configuration	Front engine/front-wheel drive

EXTERIOR DIMENSIONS (mm)	
Wheelbase	2430
Overall length	4285
Overall width	1640
Overall height	1385
Track width Front/Rear	1430/1430

CAPACITIES & WEIGHTS				
Cargo volume (L)	340			
Fuel tank (L)	50			
Curb weight (kg)	Man.	1014		
	Auto.	1032		

TRANSPORT CANADA FUEL CONSUMPTION EST. (L/100 km)				
Manual	Hwy/City	6.1/8.3		
Automatic	Hwy/City	7.6/9.2		

All-Wheel Drive SE  
Front-Wheel Drive XE



#### AXXESS SPORTWAGON

A unique balance of contemporary form and function, the Axxess SportWagon makes entry and exit to its versatile interior easy and convenient with dual sliding rear side doors.

KEY FEATURES	FWD XE	AWD SE
2.4-litre SOHC 12-valve 4-cylinder engine	●	●
5-speed manual overdrive transmission	●	●
Electronically controlled 4-speed automatic overdrive transmission with lock-up	●	●
Viscous limited-slip differential		●
Euro-tuned suspension		●
Power-assisted rack-and-pinion steering	●	●
Aluminum alloy wheels		●
Dual sliding rear side doors	●	●
Power sliding tinted glass sunroof	●	●
Reclining front bucket seats	●	●
5+2 seating option	●	
Cloth seat trim	●	●
Power windows (front door)	●	●
Power door locks	●	●
Cruise control	●	●

KEY SPECIFICATIONS	Front-Wheel Drive XE	All-Wheel Drive SE
Horsepower (SAE net)	138 hp @ 5600 rpm	
Torque (SAE net)	148 ft-lbs @ 4400 rpm	
Drive configuration	Front engine/front-wheel drive	Front engine/all-wheel drive

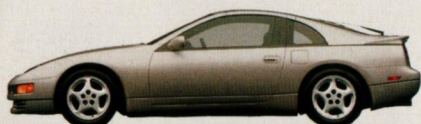
EXTERIOR DIMENSIONS (mm)		
Wheelbase	2611	2601
Overall length	4366	4366
Overall width	1690	1690
Overall height	1640	1640
Track width Front/Rear	1460/1430	

CAPACITIES & WEIGHTS			
Cargo volume – 5-passenger (L)			
Rear seats up/down	1005/1971		1005/1971
Cargo volume – 7-passenger option (L)			
Rear seats up/down	330/964		N/A
Fuel tank (L)	65		60
Curb weight (kg)	Man.	1305	1413
	Auto.	1335	1440

TRANSPORT CANADA FUEL CONSUMPTION EST. (L/100 km)				
Manual	Hwy/City	8.0/11.0		9.4/12.4
Automatic	Hwy/City	8.6/11.9		9.7/12.9



Turbo  
2+2  
2-Seater



## 300 ZX

The very pinnacle of sports car styling, comfort, performance and handling, the awe-inspiring Nissan 300 ZX continues to dazzle enthusiasts and critics alike, whether moving or standing still.

KEY FEATURES	2-Seater	2+2	Turbo
3.0-litre DOHC 24-valve V6 engine	●	●	
Twin-turbo 3.0-litre DOHC 24-valve engine w/twin air-to-air intercoolers			●
Nissan Valve Timing Control System	●	●	●
5-speed manual overdrive transmission	●	●	●
Electronically cont. 4-speed automatic overdrive transmission with lock-up	●	●	●
Super HICAS™ 4-wheel steering system			●
Viscous limited-slip rear differential	●	●	●
4-wheel independent multi-link susp.	●	●	●
Power 4-wheel vented disc brakes	●	●	●
Anti-lock Braking System (ABS)	●	●	●
T-bar roof	●	●	●
Reclining front bucket seats	●	●	●
Leather seating surfaces	●	●	●
Automatic temperature control air cond.	●	●	●
Power windows and door locks	●	●	●
Automatic Theft Deterrent System	●	●	●
KEY SPECIFICATIONS	2-Seater	2+2	Turbo
Horsepower (SAE net)	222 hp @ 6400 rpm		300 hp <sup>2</sup> @ 6400 rpm
Torque (SAE net)	198 ft-lbs @ 4800 rpm		283 ft-lbs @ 3600 rpm
Drive configuration	Front engine/rear-wheel drive		
EXTERIOR DIMENSIONS (mm)			
Wheelbase	2450	2570	2450
Overall length	4305	4520	4305
Overall width	1790	1800	1790
Overall height	1255	1270	1255
Track width Front/Rear	1495/1535	1495/1535	1495/1545
CAPACITIES & WEIGHTS			
Cargo volume (L)	671	325/617 <sup>3</sup>	671
Fuel tank (L)	71		
Curb weight (kg)	Man. 1430 Auto. 1473	1470 1516	1485 1591
TRANSPORT CANADA FUEL CONSUMPTION EST. (L/100 km)			
Manual Hwy/City	9.1/13.4		9.1/13.5
Automatic Hwy/City	9.2/12.7		9.3/13.4

2-280 hp with automatic transmission.  
3-Rear seat up/rear seat down.

Fastback LE  
Fastback SE  
Coupe LE



## 240 SX

Sleek good looks, spirited performance, agile handling and luxurious comfort – the Nissan 240 SX delivers everything you want in a sports car, together with outstanding value for the money.

KEY FEATURES	Fastback		Coupe
	SE	LE	LE
2.4-litre DOHC 16 valve 4-cylinder engine	●	●	●
5-speed manual overdrive transmission	●	●	●
Electronically cont. 4-speed automatic overdrive transmission with lock-up	●	●	●
Power-assisted rack-and-pinion steering	●	●	●
Independent multi-link rear suspension	●	●	●
Power-assisted 4-wheel disc brakes	●	●	●
Anti-lock Braking System (ABS)	●	●	●
Super HICAS™ 4-wheel steering system	●	●	
Viscous limited-slip rear differential	●	●	●
Sport suspension	●	●	
Aluminum alloy wheels	●	●	●
Retractable halogen headlights	●	●	●
Dual power remote-controlled side mirrors	●	●	●
Sunroof with sunshade	●	●	●
Reclining low-back front bucket seats	●	●	●
Fold-down rear seatbacks	●	●	●
Leather seating surfaces		●	●
Power windows and door locks	●	●	●
Cruise control	●	●	●
KEY SPECIFICATIONS	Fastback		Coupe
	SE	LE	LE
Horsepower (SAE net)	155 hp @ 5600 rpm		
Torque (SAE net)	160 ft-lbs @ 4400 rpm		
Drive configuration	Front engine/rear-wheel drive		
EXTERIOR DIMENSIONS (mm)			
Wheelbase	2475		
Overall length	4520		
Overall width	1690		
Overall height	1290		
Track width Front/Rear	1460/1460		
CAPACITIES & WEIGHTS			
Cargo volume (L)	402		243
Fuel tank (L)	60		
Curb weight (kg)	Man.	1217	1266
	Auto.	1237	1287
			1253
			1271
TRANSPORT CANADA FUEL CONSUMPTION EST. (L/100 km)			
Manual	Hwy/City	7.9/10.9	
Automatic	Hwy/City	8.2/11.4	

2000  
1600



## NX

The sporty Nissan NX has everything that makes a car fun and exciting to drive. Quick, responsive power. Nimble handling. Superb control. And a host of standard comforts and conveniences.

KEY FEATURES	1600	2000
1.6-litre DOHC 16-valve 4-cylinder engine	●	
2.0-litre DOHC 16-valve 4-cylinder engine		●
Sequential multi-point fuel injection	●	●
5-speed manual overdrive transmission	●	●
4-speed automatic overdrive transmission	●	●
Power-assisted rack-and-pinion steering	●	
Power-assisted 4-wheel disc brakes		●
Anti-lock Braking System (ABS)		●
4-wheel independent suspension	●	●
Viscous limited-slip front differential		●
Aluminum alloy wheels	●	●
T-bar roof w/removable glass panels	●	●
Dual power remote-controlled side mirrors	●	●
Reclining front bucket seats	●	●
Folding rear seats	●	●
Air conditioning	▲	▲
Power windows and door locks		●
Cruise control	●	●
KEY SPECIFICATIONS	1600	2000
Horsepower (SAE net)	110 hp @ 6000 rpm	140 hp @ 6400 rpm
Torque (SAE net)	108 ft-lbs @ 4000 rpm	130 ft-lbs @ 4800 rpm
Drive configuration	Front engine/front-wheel drive	
EXTERIOR DIMENSIONS (mm)		
Wheelbase	2430	
Overall length	4125	
Overall width	1679	
Overall height	1306	
Track width Front/Rear	1433/1420	
CAPACITIES & WEIGHTS		
Cargo volume (L)	464	
Fuel tank (L)	50	
Curb weight (kg)	Man. 1066 Auto. 1094	1116 1138
TRANSPORT CANADA FUEL CONSUMPTION EST. (L/100 km)		
Manual	Hwy/City 5.7/8.3	7.1/10.3
Automatic	Hwy/City 6.1/8.7	7.3/10.4



# S P O R T U T I L I T Y V E H I C L E S & T R U C K S

SE 4-Door  
XE 4-Door  
XE 2-Door



## PATHFINDER

Nissan Pathfinder combines the rugged versatility of a sport utility vehicle with sedan-like comfort and convenience, making it ideal for a day in the country or a night on the town.

SE-V6 King Cab  
XE King Cab  
Regular Bed



## HARDBODY 4x4

Equipped with a powerful engine, a rear-wheel Anti-lock Braking System (ABS) and rugged 4-wheel drive, the Nissan 4x4s let you go where others fear to tread, with complete confidence.

SE-V6 King Cab  
King Cab DLX  
Heavy Duty V6  
Regular Bed DLX



## HARDBODY 4x2

With a choice of potent powerplants, sturdy steel frames and rugged double-wall beds, Nissan 4x2 Hardbodies can climb steep grades, haul big payloads or tow hundreds of kilograms.

KEY FEATURES	XE 2-Door	XE 4-Door	SE 4-Door
3.0-litre SOHC V6 engine	•	•	•
5-speed manual overdrive transmission	•	•	•
4-speed automatic overdrive transmission	•	•	•
Power front disc/rear drum brakes	•	•	•
Power 4-wheel disc brakes			•
Rear Anti-lock Braking System (ABS)	•	•	•
Independent front suspension w/stab. bar	•	•	•
5-link coil-spring rear suspension	•	•	•
Limited-slip rear differential		•	•
On-demand 4-wheel drive	•	•	•
Auto-locking front hubs	•	•	•
Dual power remote-cont. side mirrors		•	•
Reclining front bucket seats	•	•	•
Multi-adjustable driver's seat			•
Split fold-down reclining rear seats	•	•	•
Leather seating surfaces			•
Power windows and door locks		•	•
Cruise control	•	•	•
Tilt steering column	•	•	•

KEY SPECIFICATIONS		XE 2-Door	XE 4-Door	SE 4-Door
Horsepower (SAE net)		153 hp @ 4800 rpm		
Torque (SAE net)		180 ft-lbs @ 4000 rpm		
Drive configuration		Front engine/part-time 4-wheel drive		
EXTERIOR DIMENSIONS (mm)				
Wheelbase		2650		
Overall length		4365		
Overall width		1690		
Overall height		1669		1679
Track width Front/Rear		1425/1410		1445/1430
CAPACITIES & WEIGHTS				
Cargo volume (L)	Rear seat up	890		
	Down	2271		
Fuel tank (L)		80		
Curb weight (kg)	Man.	1694	1725	1750
	Auto.	1715	1745	1768
TRANSPORT CANADA FUEL CONSUMPTION EST. (L/100 km)				
Manual	Hwy/City	11.7/15.6		
Automatic	Hwy/City	11.3/15.2		

KEY FEATURES	Reg. Bed	XE King Cab	SE-V6 King Cab
3.0-litre SOHC V6 engine			●
2.4-litre SOHC 4-cylinder engine	●	●	
5-speed manual overdrive transmission	●	●	●
4-speed automatic overdrive transmission			●
Power front disc/rear drum brakes	●	●	●
Rear-wheel Anti-lock Braking System (ABS)	●	●	●
Independent front suspension w/stab. bar	●	●	●
Auto-locking front hubs			●
Double-wall cargo box	●	●	●
Reclining front bucket seats		●	●
Rear jump seats		●	●
KEY SPECIFICATIONS	Regular Bed	XE King Cab	SE-V6 King Cab
Horsepower (SAE net)	134 hp @ 5200 rpm		153 hp @ 4800 rpm
Torque (SAE net)	154 ft-lbs @ 3600 rpm		180 ft-lbs @ 4000 rpm
Drive configuration	Front engine/part-time 4-wheel drive		

KEY FEATURES		Reg. Bed DLX	King Cab DLX	Heavy Duty V6	SE-V6 King Cab
3.0-litre SOHC V6 engine				●	●
2.4-litre SOHC 4-cylinder engine		●	●		
5-speed manual overdrive transmission		●	●	●	●
4-speed automatic overdrive transmission		●	●	●	●
Cloth seat trim		●	●	●	●
Air conditioning		▲	▲	▲	▲
Double-wall cargo box		●	●	●	●
KEY SPECIFICATIONS		Reg. Bed DLX	King Cab DLX	Heavy Duty V6	SE-V6 King Cab
Horsepower (SAE net)		134 hp @ 5200 rpm		153 hp @ 4800 rpm	
Torque (SAE net)		154 ft-lbs @ 3600 rpm		180 ft-lbs @ 4000 rpm	
Drive configuration		Front engine/rear-wheel drive			
EXTERIOR DIMENSIONS (mm)					
Wheelbase		2650	2950	2950	2950
Overall length		4435	4825	4825	4825
Overall width		1650	1650	1650	1650
Overall height		1575	1575	1575	1585
Track width	Front	1395	1395	1395	1395
	Rear	1385	1410	1410	1430
CAPACITIES & WEIGHTS					
Fuel tank (L)		60	60	80	60
Curb weight (kg)	Man.	1247	1290	1400	1447
	Auto.	1275	1318	1415	1463
Payload (kg)		635	635	907	635
GVWR (kg)		1996	1996	2359	2132
GAWR (kg)	Front	998	998	998	998
	Rear	1154	1154	1452	1179
Towing weight (kg)					
w/standard brakes		454	454	454	454
w/trailer brakes—man.		1588	1588	2268	1588
w/trailer brakes—auto.		907	1588	1588	1588
TRANSPORT CANADA FUEL CONSUMPTION EST. (L/100 km)					
Manual	Hwy/City	7.9/10.3		9.1/12.2	
Automatic	Hwy/City	8.3/11.4		9.2/13.1	









This brochure is printed on recycled paper. Nissan encourages you to recycle it in turn; let's work together to protect the environment.

Inspired performance. Responsive handling. And a sincere concern for your comfort and well-being. These form the basis for the Nissan Satisfaction Commitment, the most comprehensive full-line customer care program in Canada. No matter which of the 1992 Nissan models you choose, you'll find that it reflects our commitment to your personal satisfaction and safety as well as our dedication to your sense of quality and value. At Nissan, our goal is to create cars and trucks you'll be happy and proud to own. Today. Tomorrow. And on down the road.

**NATIONWIDE** dealer support strengthens and reinforces our commitment to customer satisfaction. There are nearly 200 Nissan dealers coast to coast. And each is equipped with some of the most advanced service technology available – from a freon-recovery system that helps preserve our environment to highly sophisticated "Consult" diagnostic equipment.

**OWNING** a new Nissan can be very simple. Nissan Canada Finance Inc. offers qualified customers competitive rates and terms. Or you might want to consider leasing a new car or truck.

**PROTECTION** for your investment centres on a new complete vehicle

warranty that covers you for 3 years/80,000 km.\* Plus a major component warranty that covers more than just the powertrain for 6 years/100,000 km.\* Your vehicle is also protected for six years against corrosion perforation (unlimited km). And so we'll all breathe easier, we warranty your emission control system for 6 years/100,000 km.\* In addition, every 1992 Nissan comes standard with the 3-year Roadside Assistance program that will allow us to help you, even if the emergency is as simple as locking your keys in the car. Just call 1-800-387-0122. All this coverage, with no deductible or transfer fee, makes ours the most comprehensive full-line customer care program in Canada.

**CUSTOMER** satisfaction is the reason that we established the Nissan Satisfaction Centre. By calling 1-800-387-0122, you'll reach Nissan representatives who will gladly assist you in any way they can. We value you as a customer. And so, from the day you enter a showroom to the day you trade in your vehicle on a new one, we'll do everything we can to make you glad you chose a Nissan.

\* Whichever comes first; see your Nissan dealer for details.

Specifications and equipment based on information available at time of printing and subject to change without notice. Some vehicles shown with optional equipment; see Features and Specifications charts. For more details on 1992 options, accessories and specifications in your area, contact your local Nissan dealer.

Nissan Canada has taken care to ensure that all information within this brochure is fully accurate at press time, but some equipment shown on models may not be available in Canada. Due to the limitations of the printing process, colours rendered in this book may not represent exact colours on models. Please consult your Nissan dealer, or write to Nissan Canada Inc., prior to purchase to avoid misunderstandings which could result from changes, deletions or modifications during the model year. Our address is: Nissan Canada Inc., National Headquarters, P.O. Box 1709, Station B, Mississauga, Ontario L4Y 4H6.

Printed in Canada in 1991  
Catalogue number 99999-01954EN

Dealer Identification



Built for the Human Race.