

TOYOTA

1993 CAMRY



T

he Toyota Camry: "...refined performance and a long list of standard features make it the best value of its hotly contested class." (*Motor Trend*, Nov. 1991.)

As evident in *Motor Trend's* evaluation, the Camry represents everything that is exemplary in an automobile. Contemporary beauty that quietly elicits attention. Power soundly drawn from the well of progressive technology. Responsiveness that quickly complies with demanding requests. Safety features that are synergistically blended. And an intimacy between driver and machine that can only be achieved through an environment dedicated to comfort and exceptionally quiet operation.

The 1993 Toyota Camry: everything comes together under one beautifully sculpted roof.





DELUXE SEDAN



LE SEDAN



SE SEDAN



XLE SEDAN



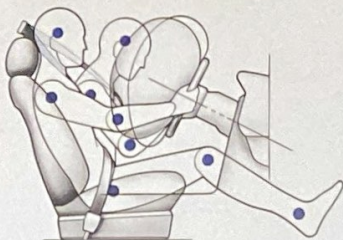
DELUXE WAGON



LE WAGON



XLE V6 Sedan shown in Almond Beige Pearl.



PRECAUTIONARY MEASURES. Every 1993 Camry comes standard with a driver-side air bag Supplemental Restraint System (SRS)* to help reduce driver injury in the event of a frontal impact.

S**AFETY FACTORS THAT ADD UP.** The 1993 Camry is replete with safety features. Take Camry's driver-side air bag Supplemental Restraint System (SRS)* for example. Together with the comfort-enhancing

"...Camry is replete with safety features..."

3-point seatbelt with an adjustable front shoulder belt anchor, it helps reduce the chance of driver injury in a frontal collision. Much attention has also been given to the matter of control. Large power-assisted ventilated front disc brakes are standard, and all models come with the option of an Anti-lock Brake System (ABS). The structure of a vehicle is also very important. Camry incorporates high-tensile-strength steel sheets fused together with structural adhesives and welding to maintain Camry's light weight without sacrificing rigidity and strength. These and many other safety features are present in the 1993 Camry. And together they work toward one goal: Toyota quality.

*The Camry features a driver-side air bag Supplemental Restraint System (SRS) which activates in a front-end collision of enough magnitude to inflate the bag. In a moderate collision, primary protection is provided by the 3-point lap and shoulder belt system, and the air bag may not inflate. So, safety belts should be worn at all times by all occupants.

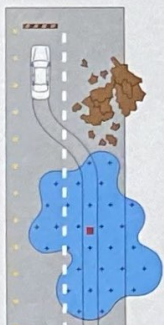


TEAM TOYOTA TALENT. The quality-minded men and women of Toyota Motor Manufacturing in Georgetown, Kentucky, build most American-bought Camrys and all Camry Wagons.



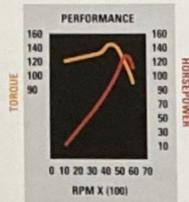
STEADFAST AND FIRM. Camry's solid unibody construction incorporates direct panel-to-panel bonding, unified side member panels and reinforced one-piece doors.

A MATTER OF CONTROL. An Anti-lock Brake System (ABS) is optional on all Camrys. ABS utilizes a computer with front and rear sensors to help avoid brake lockup and maintain steering control during sudden stops.

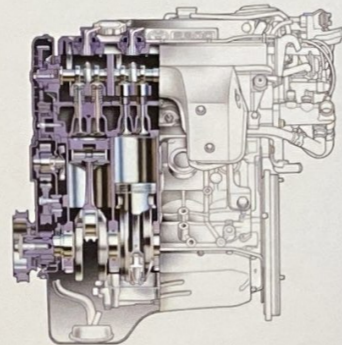


BRAKING BRAWN. A show of strength is provided by power-assisted ventilated front disc brakes. Their large capacity helps bring you to a swift stop.





OVER ACHIEVER. Camry's 4-cylinder engine competes with the big boys by efficiently extracting as much power as possible from its highly advanced design: 130 hp* at 5,400 rpm, and 145 lb.-ft. of torque at 4,400 rpm.

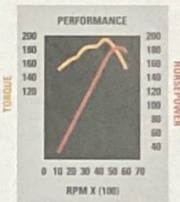


BEYOND WHAT'S EXPECTED. With twin camshafts, 16 valves and electronic fuel injection, Camry's standard inline 4-cylinder engine's power potential will surprise you. Another surprise is how quiet and steady it is thanks to dual balance shafts.

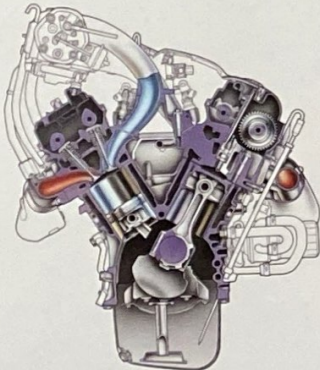
THE CRADLE OF POWER. A front subframe cradles Camry's powerplant. The subframe and hydraulic engine mounts work together to isolate harmonic noise and vibration away from the passenger cabin.

THE PROCESS OF REFINEMENT. It's almost poetic, the way in which Camry's 4-cylinder and V6 engines refine power. With the aid of advanced technology, each cylinder maintains timepiece-like precision in the cycle of combustion. Both take advantage of an efficient 4-valve-per-cylinder design and the exactness of overhead camshafts. The intake path on the V6 adjusts to meet varying performance needs, and an air-assist system, together with specially designed intake ports, provides optimum fuel/air mixture. To quell natural harmonic vibrations, the 4-cylinder engine uses dual balance shafts which act to keep the engine smooth. In the end, all the meticulous refinements found in both engines add up to performance truly refined.

"...maintains timepiece-like precision..."



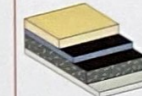
CLIMBING THE CHART. The Camry V6 engine's ascension to power is easily demonstrated here: 185 hp and 195 lb.-ft. of torque. For a graphic demonstration, get behind the wheel.



THERE'S POWER IN NUMBERS. Camry's V6 has four camshafts and 24 valves. All of which work in harmony with one goal: quiet, efficient power.

A QUIET PLACE. Strategically placed foam rubber blocks inside the roof panel and pillars of Camry further enhance its interior tranquility.

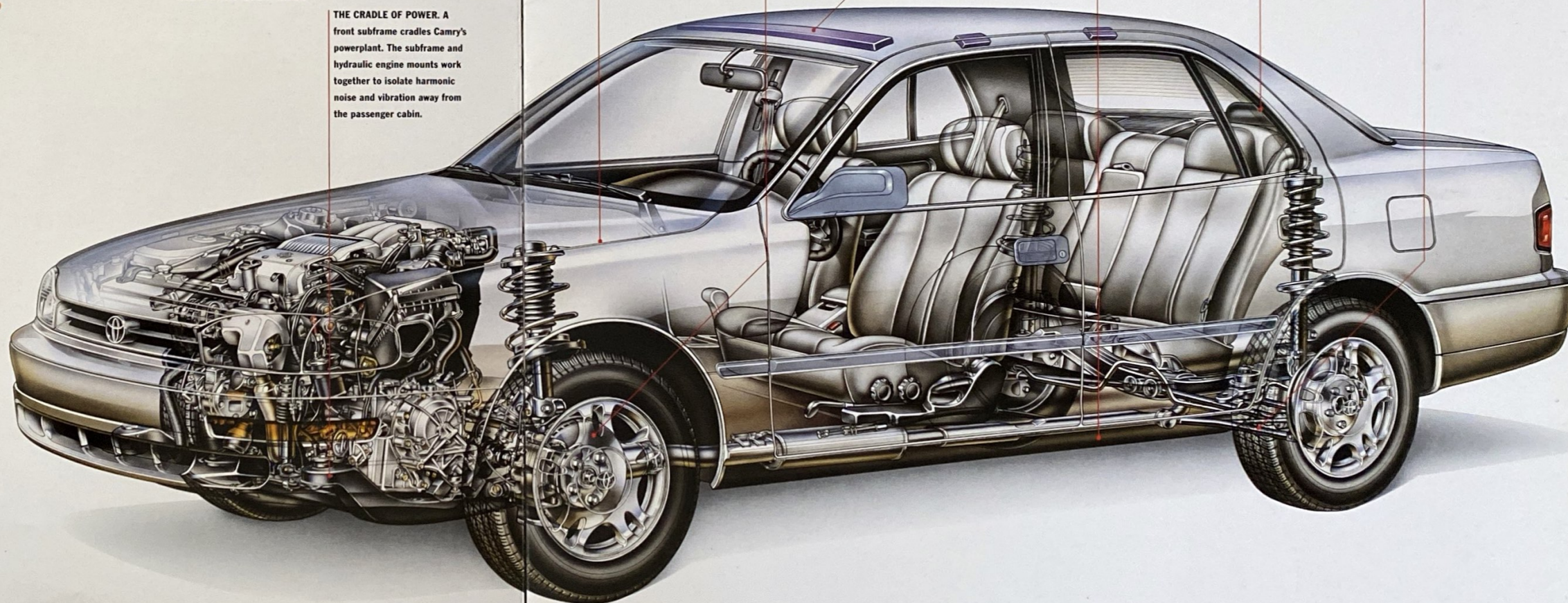
CAMRY'S LATEST COMPOSITION. Camry's effective sound-dampening material is composed of asphalt and steel. The "sandwich" designed sheets are then placed between the steel body and chassis panels to help minimize vibration and noise.



BRIDGING THE GLASS GAP. Flush glass surfaces improve Camry's aerodynamics, and seemingly seamless workmanship adds to its clean appearance.



TO GET YOU OVER THE ROUGH SPOTS. Camry's independent dual-link rear suspension is finely tuned with a trailing arm and dual transverse lower links that provide a smooth ride and help maintain control over rough surfaces. It's connected to a rear subframe to help reduce overall noise and vibration.





XLE V6 Sedan interior shown with optional Leather Trim Package in Gray.



HEIGHT COMPENSATION. Not everyone is the same height; so Camry comes equipped with adjustable front shoulder belt anchors that enhance driver and front passenger comfort.



TOYOTA MOTOR MANUFACTURING in Georgetown, Kentucky, is the home of over 3,500 Team Toyota members who demonstrate American "know-how" in producing Toyota Camrys.



ONE BETTER. You expect head, shoulder and leg room, but foot room? Why not make room for the feet? Unlike traditional floor-mounted seats, Camry's innovative side-mounted front seats do just that with foot room for rear-seat passengers.



CONFORMING COMPANION. Once you get acquainted, you'll spend a lot of time in the 6-way adjustable driver's seat (standard in the LE and SE Sedans, and LE Wagon). It offers head-rest vertical/tilt, slide, recline, and front/rear seat cushion height adjustments.

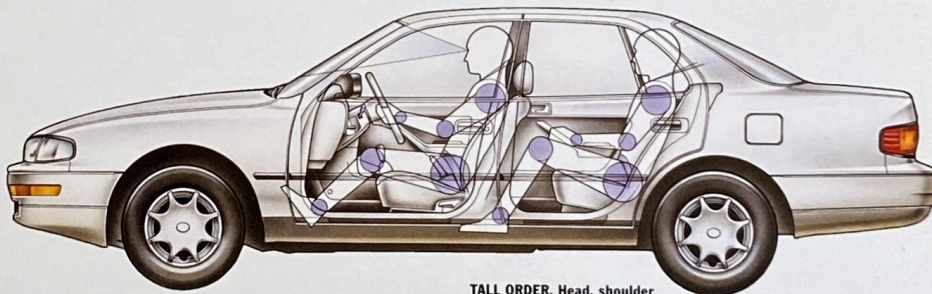
S**HERE OF INFLUENCE.** Buttons, switches, gauges, levers and pedals. They're more than just items of operation in the 1993 Camry. Designed to be aesthetically pleasing, logically placed and engineered to be compliant and completely functional, all of Camry's controls are a testament to the science of ergonomics. Buttons are contoured to the shape and articulation of a finger; stalk-mounted switches are located only a hand span away from the steering wheel; large legible analog gauges present information readily and swiftly; the shift lever fits the hand like a glove; and pedals are responsive and easily reached by adjusting the driver's comfortably supporting front bucket seat.

*...the interior ranks as sumptuously luxurious.**

As your eyes survey the dash, you'll notice that everything within the Camry is laid out in consideration of the driver's control and aesthetic sensibilities.

CREATING THE PROPER ATMOSPHERE. Inside the Toyota Camry you'll find true serenity, or as *Motor Trend* so elegantly stated: "...the interior ranks as sumptuously luxurious."* Within its interior expanse, supporting seats are upholstered in soft fabric. Your comfort level is also enhanced by all of the vibration- and noise-dampening innovations which led one editor to write; "The result is a level of quiet that people don't readily associate with a car in this price class."*

**Motor Trend, November 1991.*



TALL ORDER. Head, shoulder and leg room—there's even foot and elbow room. Camry's engineers considered the comfort of all five passengers when they designed the roomy cabin.



A CAPACITY FOR COURTESY.
The trunk area makes available 14.9 cu. ft. of cargo space with easy access by way of its low liftover height.



GREATER OPPORTUNITY. The fold-down 60/40 split rear seat lets you carry long items while still seating a rear passenger. It features a center armrest and dual headrests. There are even security locks that help keep your belongings safe in the trunk.



RHAPSODY IN YOU. The Deluxe Electronically-Tuned Radio (ETR) with 4 speakers is a heavenly sounding standard feature.

PLUSH SURROUNDINGS. The Deluxe Sedan features a center console box with a padded cover for carrying personal items and, to round out the spacious interior, seats and door panels are finished in soft, durable fabric.



BELL BRED AND WITH THE FEATURES TO PROVE IT. As the most affordable Camry, the Deluxe Sedan establishes its dedication to value with a wide variety of standard features that includes a tilt steering wheel with a

...Camry combines art and utility...?

driver-side air bag Supplemental Restraint System (SRS)*, auto-off headlamps and intermittent wipers. High levels of performance are also maintained with the 2.2-liter 4-cylinder twin-cam 16-valve EFI engine, combined with variable-assist power rack-and-pinion steering and the option of an Anti-lock Brake System (ABS). With all of its features, it's no wonder that *Car and Driver* stated: "...the Camry combines art and utility...with a look and feel of good breeding."**

*See page 4 for more information on Camry's driver-side air bag Supplemental Restraint System (SRS).

***Car and Driver*, November 1991.



Deluxe Sedan shown in Dark Emerald Pearl.



LE Sedan shown in Silver Metallic.

LE SEDAN



AUDIOPHILE ATTRACTION. Let the LE's standard Deluxe ETR/Cassette with 4 speakers escort you on your many journeys.



PUSH-BUTTON PAMPERING. For extremely convenient operation, the LE's standard Power Package includes dual color-keyed power outside mirrors and power windows with a driver-side one touch "auto-down" feature. Power door locks incorporate an "anti-lockout" feature, and a 2-turn unlock function.

THE LE SEDAN: A DOMAIN DOMINATED BY UNEXPECTED EXTRAS. The 1993 Toyota LE Sedan: standard amenities reign in this realm. Beside the steering wheel, equipped with a driver-side air bag Supplemental Restraint System (SRS)* is the soothing coolness of a standard air conditioning system. To make long trips seem shorter the LE comes standard with cruise control and a Deluxe ETR/Cassette with 4 speakers and a power antenna. While the LE Sedan has so many standard features, there are still a few things you might want to opt for like the available aluminum alloy wheels, power tilt/slide glass moonroof or Anti-lock Brake System (ABS).
"...amenities reign in this realm."

Restraint System (SRS)* is the soothing coolness of a standard air conditioning system. To make long trips seem shorter the LE comes standard with cruise control and a Deluxe ETR/Cassette with 4 speakers and a power antenna. While the LE Sedan has so many standard features, there are still a few things you might want to opt for like the available aluminum alloy wheels, power tilt/slide glass moonroof or Anti-lock Brake System (ABS).

*See page 4 for more information on Camry's driver-side air bag Supplemental Restraint System (SRS).



LUXURY CRUISE. Another standard luxury appointment is the LE's cruise control. It makes long distance voyages more enjoyable and less taxing.

RESERVATIONS FOR FIVE. Inside the sumptuous LE Sedan interior you'll find accommodations for five with all the trimmings. The LE's exclusive plush, full fabric interior surrounds you with fabric headliner and full cut-pile carpeting. Camry LE has all of this and supportive seating, extensive room and advanced ergonomics.



WINTRY WISHES. With the LE's standard air conditioning you can escape the heat and maintain a cool interior environment.





THE LEATHER TOUCH. The steering wheel, with a standard driver-side air bag (SRS),* hand brake and manual shift lever all have the touch of sporty, soft leather. (Leather-wrapped manual shift lever, and hand brake available on 5-speed manual overdrive transmission model only.)



THE SERIOUS LOOK. Large 15-inch sport alloy wheels teamed with 205/65VR15 speed-rated tires make an undeniable performance statement.



PURE ATHLETICISM. The 1993 SE Sedan: strength, agility and an undaunted competitive spirit. Born into a family of vehicles already inspiring driving passion, the SE Sedan takes performance to the next level. Its 185-hp 24-valve V6 engine is teamed up with a 5-speed manual overdrive transmission with a larger clutch to engage your immediate requests. Both the suspension and steering have been specially tuned.

“...the SE Sedan takes performance to the next level.”

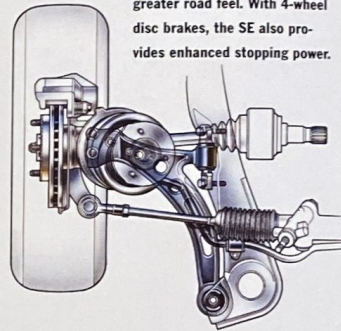
The independent MacPherson strut suspension uses stiffer bushings and body mounts for better road feel,

while the variable-assist power rack-and-pinion steering has a quicker ratio for enhanced response. With a wide range of standard performance-oriented refinements and the option of ABS, the SE Sedan is as serious as you can get in the sports sedan field.

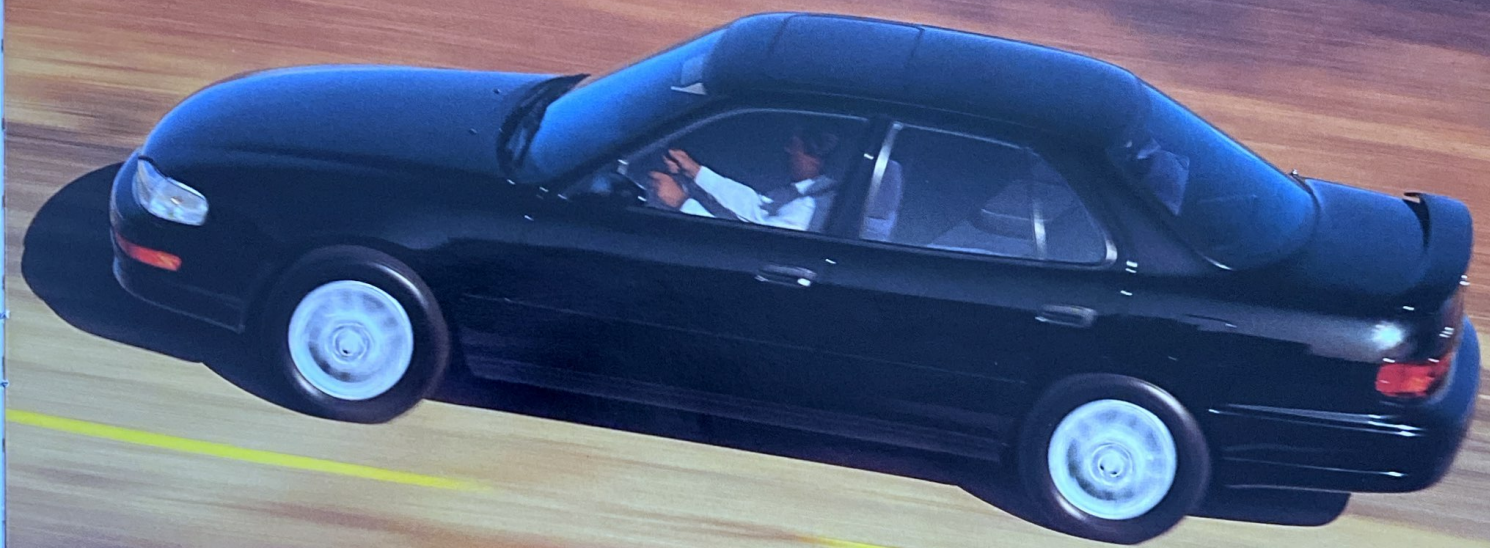
A PHYSIQUE TO PROVE IT. The SE Sedan wears its sport credentials in plain view with performance-promising additions like the standard sport alloy wheels and chrome-tipped tailpipes. A color-keyed rear spoiler and special blackout trim put the accent on performance and bodyside moldings help protect the exterior finish. Inside, personal attention has been given to the driver. A performance-type 6-way adjustable driver's sport seat helps keep you comfortable and alert. The SE Sedan also caters to passengers' comfort and entertainment with standard air conditioning and a Deluxe ETR/Cassette with 4 speakers. Inside and out, the SE Sedan is an athletic sports sedan with a healthy dose of standard equipment.

*See page 4 for more information on Camry's driver-side air bag Supplemental Restraint System (SRS).

INSTRUMENTAL TUNING. The SE's specially tuned sport suspension includes gas-filled shock absorbers, and stiffer bushings and body mounts for greater road feel. With 4-wheel disc brakes, the SE also provides enhanced stopping power.



LAND OF THE FREE. The spacious SE's interior liberates the sport motoring enthusiast's spirit with plenty of room.



SE Sedan shown in Black.



ATTENTION TO DETAIL. Like the car they build, the men and women of Toyota Motor Manufacturing are uncompromising. Because of people like them, the automotive standards in this country are being raised every day.



T

THE OBJECT OF DESIRE. Its sculpted presence reflects light evenly across its smooth, strong metallic skin. One look is all it would take to fall in love with the 1993 Toyota Camry XLE, but one look is not enough for this, the top-of-the-line Camry. Circle around its pleasing perimeter and take in its clean aerodynamic shape. Its alluring body continuity is maintained by color-keyed elements and an almost seamless sur-

“...XLE Sedan: it's the ultimate reward.”

face. From the front air dam and bright aerodynamic halogen headlamps with “auto-off” feature, to its wide panoramic front windshield with variable intermittent wipers, its profile demonstrates the pleasing marriage of form and function. On close inspection you'll notice an automatic illuminated entry/exit system. It lights the exterior key lock, interior light and ignition key ring for your convenience. Soon you've surveyed everything from the power tilt/slide glass moonroof to the standard aluminum alloy wheels—now you're ready to do more than just look.

The XLE Sedan is not only beautiful, but it's also smart. This is demonstrated by a standard driver-side air bag Supplemental Restraint System (SRS),* a choice of either a 4-cylinder or V6 engine, and the option of an Anti-lock Brake System (ABS). The Toyota Camry XLE Sedan: it's the ultimate reward.

*See page 4 for more information on Camry's driver-side air bag Supplemental Restraint System (SRS).



OPEN TO YOUR SUGGESTION. Make an overture with just a push of a button: the XLE's power tilt/slide glass moonroof with sliding sunshade is glad to be of service.



THE VIRTUE OF VANITY. The driver- and front-seat passenger illuminated visor vanity mirrors are two noteworthy examples. They help you look your best at all times, even at night.



AS IF YOU WERE THERE. The optional Premium ETR/Cassette with 6 speakers offers you an array of musical choices all with the high-fidelity sound of crystal-clear reproduction.



ATMOSPHERIC CONDITIONS. Environmental challenges are easily met with the XLE standard soft-touch heating and air conditioning controls.



ESCAPE THE EVERYDAY...EVERY DAY. The Camry XLE

Sedan provides the perfect escape from the noise and confusion of the everyday world. Settle in with the XLE's standard luxurious fabric interior, or enjoy the ultimate in rich elegance with the optional Leather Trim Package, which provides a glove-soft seating

"...find refuge in the XLE Sedan."

environment that is available exclusively on the XLE. So that the driver can fully enjoy the surroundings, the XLE's standard 7-way adjustable power driver's seat features slide, recline, front/rear cushion height and headrest adjustments as well as manual lumbar and side bolster supports. Other power features include power windows, door locks and dual color-keyed outside mirrors. Also within the driver's effortless reach are controls for the standard cruise control, variable intermittent windshield wipers and the XLE's unique soft-touch heating and air conditioning controls that help you maintain command of the interior climate. But what if you want a little of the outside to come in? The standard power tilt/slide glass moonroof with sliding sunshade and integrated maplight lets you enjoy the outside too. If you're looking for the perfect retreat, find refuge in the XLE Sedan.

INDIVIDUAL SEATING. There is no format here. You make your own seating arrangements with the 7-way adjustable power driver's seat. With the power controls, you're sure to find your optimum driving position.



XLE V6 Sedan interior shown with optional Leather Trim Package in Gray.

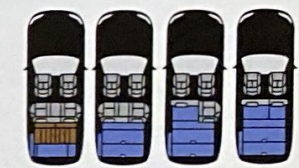


LE Wagon shown in Sunfire Red Pearl.



QUALITY ASSURANCE. Constant inspection procedures and a policy that allows any factory worker to stop the line if something doesn't meet Toyota's stringent quality expectations help ensure the quality of Camrys being built at the Georgetown, Kentucky, plant.

THE SPACIOUS UTILITARIAN THAT DOESN'T COMPROMISE **DISTINCTION.** The 1993 Camry Wagon is roomy, comfortable and practical without giving up the performance and superior styling that is inherent in the Camry Sedan lineup. It's available in both a Deluxe and LE model, and each has the same valuable features as its Sedan counterpart. You even get the choice of V6 performance in the LE Wagon. Interior amenities are complemented with the added convenience of over 40 cu. ft. of fully carpeted cargo room with the rear seat up; with it folded flat, the Wagon delivers a maximum of 74.8 cu. ft. of cargo-carrying capacity. There's even a retractable color-keyed rear



CHANGING TIMES. With a 60/40 split rear seat and an optional third rear seat, the Camry Wagon can be configured in a number of ways to meet the needs of passenger or cargo-carrying challenges.

"...roomy, comfortable and practical..."

cargo cover to help conceal your stored items. Passengers are also well taken care of inside. With the optional third rear seat the Camry Wagon accommodates seven comfortably. The 1993 Camry Wagon: all this utility and the graceful styling that make every Camry distinctive.



SECURITY BLANKET. Child-safety rear door locks are standard on Camry Wagons as they are on all Camrys. When locked, the inside door handles are inoperable so curious young adventurers stay put.

COMPLETELY VERSATILE. The optional third rear seat can be folded down for cargo or it can accommodate two rear-seat passengers. The rear seat even comes equipped with 3-point seatbelts.





CONTINUOUS PLAY TIME. The 6-Disc CD Changer* accessory literally gives you hours of listening pleasure with no fussing. It's mounted out of sight in the trunk and operated from the dash.



MAKE A PERSONAL STATEMENT. Although the Toyota Camry is replete with standard features, there are still a few items you might want to consider. There

"...a few items you might want to consider."



ENTERTAINMENT CENTER. Your home system should be as clear sounding as the optional Premium 3-in-1 ETR/Cassette/CD with 6 speakers.

are many individual options and accessories, and there are some optional Packages that are available to you, such as the Third Seat Package for the Camry Wagons or the Leather Trim Package for the XLE Sedans. With such a vast selection to choose from you're sure to find just the thing that will help you make your Camry your own.

Toyota vehicles are built with popular option combinations. Not all options are available separately. Your Toyota dealer can help you find the Camry that is right for you.

*Not available with the Premium Audio Systems.



SCREENING PROCESS. The molded front and rear mudguard accessories help shield your Camry and other vehicles from upturned road dirt and debris.

DECIDEDLY COOL. Select the Camry Deluxe and treat yourself to an optional air conditioning system. (Standard on LE, SE and XLE Sedans and LE Wagons.)



CRUISE SHIP. Select the optional stalk-mounted cruise control for your Camry Deluxe or SE for less fatiguing long distance travel. (Standard on LE and XLE models, and available with the Power Package on SE Sedans.)



TOP IT ALL OFF. The rear roof rack accessory for Camry Wagons lets you carry up to 100 lbs. of luggage on top so you can carry more passengers inside.



STAND BY ON ALERT. Toyota's Vehicle Security System (TVSS) stands in the way of would-be thieves. This accessory comes with a remote control that attaches to your key ring. A push of a button arms or disarms the optional system.

INTERIOR TRIM LEVELS



Deluxe Cloth Blue, Gray Oak or Taupe*



LE Cloth Blue, Gray Oak or Taupe*



SE Cloth Blue, Gray Oak or Taupe

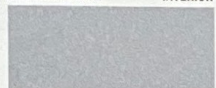


XLE Cloth Blue, Gray Oak or Taupe

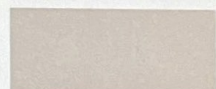
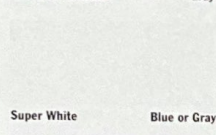


XLE Leather Trim Package** Blue, Oak or Gray

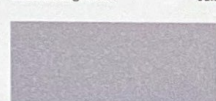
EXTERIOR FINISH



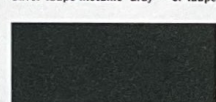
Silvermist Metallic



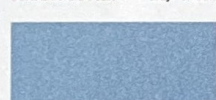
Almond Beige Pearl



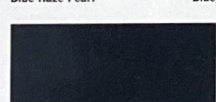
Silver Taupe Metallic Gray*** or Taupe†



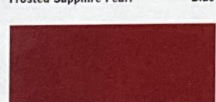
Dark Emerald Pearl



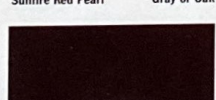
Blue Haze Pearl



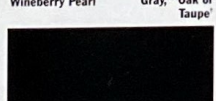
Frosted Sapphire Pearl



Sunfire Red Pearl

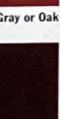
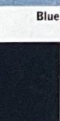
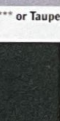


Wineberry Pearl



Black

INTERIOR



*Sedan only.

**Optional on XLE sedans, not available on Wagon models.

***Only available on XLE Sedans with Leather Trim Package and all Wagon models.

†Not available on XLE Sedans with Leather Trim Package and all Wagon models.

**Not available on XLE Sedans with Leather Trim Package.

***Wagon only.

MECHANICAL	DX Sdn.	LE Sdn.	SE Sdn.	XLE Sdn.	DX Wgn.	LE Wgn.
2.2-liter 4-cylinder twin-cam 16-valve electronically fuel-injected (EFI) engine	4-cyl. V6	4-cyl. V6	V6	4-cyl. V6	4-cyl. V6	4-cyl. V6
3.0-liter V6 four-cam 24-valve electronically fuel-injected (EFI) engine	S	S	—	S	S	—
Front-wheel drive	—	—	—	—	—	—
5-speed manual overdrive transmission	S	S	S	S	S	S
4-speed electronically controlled automatic overdrive transmission (ECT)	0	S	S	0	S	S
Variable-assist power rack-and-pinion steering	S	S	S	S	S	S
Power-assisted ventilated front disc/rear drum brakes	S	—	—	—	S	—
Power-assisted 4-wheel disc brakes	—	S	S	—	S	—
Anti-lock Brake System (ABS)	0 ¹	0	0	0 ¹	0 ¹	0
EXTERIOR						
Aerodynamic halogen headlamps with auto-off feature	S	S	S	S	S	S
Color-keyed bumpers	S	S	S	S	S	S
Dual black outside mirrors	S	S	—	S	—	—
Dual color-keyed power outside mirrors	—	—	S	S	—	—
Color-keyed bodyside moldings and door handles	S ¹	S ¹	S	S	S ¹	S
Tinted glass	S	S	S	S	S	S
Power tilt/slide moonroof with sliding sunshade and maplight	—	—	0	0	—	0
Color-keyed rear spoiler with center high-mount stoplamp	A	A	A	A	A	A
Full wheel covers	S	S	S	—	S	S
Aluminum alloy wheels	—	—	0	0	S	—
Front-end mask with storage bag	A	A	A	A	A	A
INTERIOR						
Reclining front bucket seats with adjustable headrests	S	S	—	—	S	—
6-way adjustable driver's seat	—	—	S	S ⁴	—	—
7-way adjustable power driver's seat	—	—	—	S	—	—
Fold-down 60/40 split rear seat with center armrest and security locks	S	S	S	S	S ⁵	S ⁵
Fabric seats and door trim with integrated armrests, dual door map pockets and cut-pile carpeting with driver-side footrest	S	S	S	S	S	S
Driver-side air bag Supplemental Restraint System (SRS)	S	S	S	S	S	S
3-point front seatbelts with adjustable shoulder belt anchors	S	S	S	S	S	S
3-point rear seatbelts in outboard positions	S	S	S	S	S	S
Child-protector rear door locks	S	S	S	S	S	S
Power windows and door locks	—	—	S	S	—	S
Power rear tailgate lock	—	—	—	—	S	S
4-spoke tilt steering wheel	S	S	S	S	S	S
Leather-wrapped steering wheel, shift knob and parking brake handle	—	—	S ⁷	0 ⁸	0 ⁹	—
Intermittent wipers	S	S	S	S	S ¹⁰	S ¹⁰
Dual rear wiper system	—	—	—	—	S	S
Cruise control	0	0	S	S	0	S
Interior dome lights and trunk/cargo area courtesy light	S	S	S	S	S	S
Automatic illuminated entry/exit fade-out systems	—	—	—	S	—	—
Dual cup holder and center console storage box	S	S	S	S	S	S
Rear window defogger and side window demisters	S	S	S	S	S	S
Air conditioning	0	0	S	S	0	S
Remote hood, trunk and fuel-filler door releases	S	S	S	S	S ¹¹	S ¹¹
Speedometer, tach., odometer, tripmeter, coolant temp. and fuel level gauges	S	S	S	S	S	S
Seatbelt, air bag, low fuel level, door ajar, battery, check engine, oil pressure, brake and taillamp bulb failure warning lights	S	S	S	S	S	S
Digital quartz clock	S	S	S	S	S	S
Color-coordinated rear cargo cover	—	—	—	—	S	S
Carpeted floor mats	A	A	A	A	A	A
Toyota Vehicle Security System with security light	A	A	A	A	A	A
AUDIO SYSTEMS						
Deluxe Electronically-Tuned Radio (ETR) with 4 speakers	S	S	—	—	S ¹²	—
Deluxe ETR/Cassette with 4 speakers and power antenna	0 ¹³	0 ¹³	S	S	S	0 ¹⁴
Premium ETR/Cassette w/Program. Equalization, 6 spkrs. & power antenna	—	—	0	0	0	0 ¹⁵
Premium 3-in-1 ETR/Cassette/CD w/Program. Equalization, 6 spkrs. & power antenna	—	—	—	0	0	—
Auto-reverse Cassette Deck with Dolby [®] (not available with Deluxe ETR with 4 speakers)	A	A	—	—	—	—
Compact Disc Deck (not available with Premium 3-in-1 ETR)	A	A	A	A	A	A
6-Disc CD Changer (not available with Premium 3-in-1 ETR)	A	A	A	A	—	—
PACKAGES						
Leather Trim Package—leather-trimmed seats and door trim, and leather-wrapped steering wheel and parking brake handle ¹⁶	—	—	—	—	0	0
Power Package—power windows, door locks, dual black outside mirrors (SE model) and cruise control	—	—	S	S	0	S
Third Seat Package—fold-down third rear seat, 3-point seatbelts, child-protector rear tailgate lock and temporary spare tire	—	—	—	—	0 ¹	0 ¹

TIME-TESTED COMMITMENT. For over fifty years Toyota has built vehicles that have achieved the highest recognition for quality, dependability and engineering excellence. These accomplishments are a result of Toyota's commitment to build vehicles that respond to your needs and inspire confidence. Today, for example, all passenger cars in Toyota's model lineup are equipped with a standard driver-side air bag.* Toyota's concern for safety is also illustrated by the Previa: the first and only passenger van with a driver-side air bag to meet all Federal Passenger Car Motor Vehicle Safety Standards.** Everything that goes into a new Toyota, from the initial design phase to the actual manufacturing process, does so with safety, comfort and driving enjoyment in mind. Because, ultimately, the most important thing that goes into any new Toyota is you.

CAMRY SAFETY FEATURES:

Driver-side air bag Supplemental Restraint System (SRS)¹

3-point front seatbelts with adjustable shoulder belt anchors

3-point rear seatbelts in outboard positions

Child-protector rear door locks

Optional Anti-lock Brake System (ABS)

4-wheel disc brakes (V6 or ABS-equipped models and Third Seat Package-equipped Wagons)

*See page 4 for more information on Camry's driver-side air bag Supplemental Restraint System (SRS).

**Meets all Passenger Car Federal Motor Vehicle Safety Standards except LE models equipped with optional privacy glass due to window tinting.

MECH./PERFORM.	DX Sdn.	LE Sdn.	SE Sdn.	XLE Sdn.	DX Wgn.	LE Wgn.
4-cyl. V6	4-cyl. V6	V6	4-cyl. V6	V6	4-cyl. V6	4-cyl. V6
Body/frame construction	Unitized body with front and rear anti-vibration sub-frames					
Steering type	Variable-assist power rack-and-pinion					
Turning circle diameter, curb to curb (ft.)	35.4	36.7	35.4	36.7	36.7	36.7
Brakes, power-assisted (front/rear)	Ventilated discs	Discs	Discs	Discs	Discs	Discs
Suspension (front/rear)	MacPherson struts, low-pressure gas-filled shock absorbers, stabilizer bar and anti-vibration sub-frame					
Engine type	4-cyl. twin-cam 16-valve w/EFI	V6 four-cam 24-valve w/EFI	4-cyl. twin-cam 16-valve w/EFI	V6 four-cam 24-valve w/EFI	4-cyl. twin-cam 16-valve w/EFI	V6 four-cam 24-valve w/EFI
Displacement	2.2 liters (2,164cc)	3.0 liters (2,959cc)	2.2 liters (2,164cc)	3.0 liters (2,959cc)	2.2 liters (2,164cc)	3.0 liters (2,959cc)
Horsepower (SAE net) (49 states) (California)	130 @ 5,400 rpm	185 @ 5,200 rpm	130 @ 5,400 rpm	185 @ 5,200 rpm	130 @ 5,400 rpm	185 @ 5,200 rpm
Torque (SAE net)	145 lb.-ft. @ 4,400 rpm	195 lb.-ft. @ 4,400 rpm	145 lb.-ft. @ 4,400 rpm	195 lb.-ft. @ 4,400 rpm	145 lb.-ft. @ 4,400 rpm	195 lb.-ft. @ 4,400 rpm
ELECTRICAL						
Alternator	12 volts, 70 amps. ¹⁷					
Ignition system	Electronic					
Battery	Maintenance-free, 80-amps./hr.					
EXTERIOR DIMENSIONS (in.)						
Wheelbase	103.1	103.1	103.1	103.1	103.1	103.1
Overall length	187.8	187.8	187.8	187.8	189.4	189.4
Overall width	69.7	69.7	69.7	69.7	69.7	69.7
Overall height	55.1	55.1	55.1	55.1	56.3	56.5
Tread width (front/rear)	61.0/59.0	61.0/59.0	61.0/59.0	61.0/59.0	61.0/59.0	61.0/59.0
INTERIOR DIMENSIONS (in.)						
Head room (front/rear)	38.4/37.1	38.4/37.1	38.4/37.1	38.4/37.1	37.0/36.1	37.0/36.1
Leg room (front/rear)	43.5/35.0	43.5/35.0	43.5/35.0	43.5/35.0	43.5/35.0	43.5/35.0
Shoulder room (front/rear)	56.8/56.1	56.8/56.1	56.8/56.1	56.8/56.1	56.8/56.1	56.8/56.1
Hip room (front/rear)	56.0/56.8	56.0/56.8	56.0/56.8	56.0/56.8	56.0/56.8	56.0/56.8
CURB WEIGHTS (lbs.)						
5-speed manual overdrive transmission	2,943	N/A	N/A	N/A	3,153	N/A
4-speed electronically controlled automatic overdrive transmission (ECT)	2,987	3,197	3,053	3,252	3,197	3,097
CAPACITIES						
Luggage capacity, rear seatbacks up (cu. ft.)	14.9	14.9	14.9	14.9	14.9	14.9
Cargo capacity, rear seatbacks down (cu. ft.)	N/A	N/A	N/A	N/A	N/A	N/A
Fuel tank (gals.)	18.5	18.5	18.5	18.5	18.5	18.5
TIRES						
Type	All Season steel-belted radial blackwalls ¹⁸					
Size	195/70HR14	205/65HR15	195/70HR14	205/65HR15	205/65VR15	195/70HR14
Spare	Full-size (except for Wagon with optional Third Seat Package)					
MILEAGE ESTIMATES¹⁹ EPA estimated MPG city/highway						
(5-speed manual overdrive)	22/30	N/A	N/A	N/A	18/24	N/A
(4-speed electronically controlled automatic overdrive [ECT])	21/28	18/24	21/28	18/24	18/24	21/28

S-Standard
 O-Factory Option
 A-Dealer-installed accessory
 —Not applicable
 N/A-Not applicable
 Dolby[®] is a registered trademark of Dolby Labs, Inc.

¹Includes rear disc brakes on 4-cylinder models.

²Part of Power Package and with black mirrors.

³Black door handles.

⁴With bolstered sport seat.

⁵Without security locks.

⁶Part of Power Package.

⁷Leather-wrapped shift knob and parking brake handle on manual transmission only.

⁸Part of Leather Trim Package, does not include the shift knob.

⁹Part of Leather Trim Package; does not include shift knob or parking brake handle.

¹⁰Variable intermittent wipers.

¹¹Without trunk release.

¹²With 6 speakers.

¹³Manual antenna on Deluxe models.

¹⁴With 6 speakers and manual antenna.

¹⁵With 8 speakers.

¹⁶On 4 cyl. models only.

¹⁷80 amps on V6 models.

¹⁸Speed-rated tires on SE Sedan.

¹⁹1993 EPA mileage estimates shown. See your Toyota dealer for details.

Some vehicles are shown with optional equipment. See Data/Specs charts. For details on 1993 vehicle specifications and standard and optional features in your area, contact your Toyota dealer. A vehicle with particular equipment may not be available at the dealership. Ask your Toyota dealer to help you try to locate a specifically equipped vehicle. Vehicle specifications and standard and optional features are based upon information available at the time of printing and are subject to change without notice. Specifications and standard and optional features are for mainland U.S.A. vehicles only and may differ in the state of Hawaii and in other regions.

LIMITED WARRANTY SUMMARY

Comprehensive coverage: 36-month or 36,000-mile.

Powertrain: 60-month or 60,000-mile.

Corrosion perforation: 60-month and unlimited miles.

T

oyota Touch is a philosophy in action. It's our effort to make all your experiences with Toyota the very best. From the time of your initial contact, during the sale and throughout your entire ownership period, our focus is your complete satisfaction.

If you ever have any questions, contact your dealer's Customer Relations Manager. For additional information, call our Customer Assistance Center at 1-800-331-4331 (weekdays 9 a.m. to 9 p.m. EST).

WARRANTY INFORMATION.

A 36-month/36,000-mile basic new vehicle limited warranty applies to all components other than normal wear and maintenance items. Additional 60-month limited warranties cover your powertrain (for 60,000 miles) and corrosion perforation (for unlimited miles). See your Toyota dealer for complete details. In addition, there may be times when we will establish a special policy adjustment which will further defray repair costs.

Buckle Up!
Do it for those who love you.

"I love what you do for me."

 TOYOTA