

F O R D 1 9 9 4

AEROSTAR



1994 AEROSTAR

Ford Aerostar Wagon is a most versatile mini-van, a popular, proven vehicle designed to meet the multiple transportation needs of today's family.

An especially important consideration is safety. Aerostar includes a standard driver's side air bag to supplement the safety belts, rear anti-lock brakes for more controlled stops, and optional integrated child safety seats.

Another consideration is user friendliness. Aerostar's instruments and controls are designed and located for driving comfort and convenience.

And then there's Aerostar performance: V-6 power coupled with rear-wheel drive delivers Class III towing capability (when properly equipped). The 4-corner coil spring suspension with nitrogen gas-pressurized shock absorbers delivers a smooth ride as well as capable handling.

With Aerostar, you have a wide range of choices. Seating for 5 or 7 passengers, regular- or extended-length models, 2-wheel drive or the extra traction of the optional electronic 4-wheel-drive system.



Right: The luxurious Aerostar Eddie Bauer 7-passenger interior with quad captain's chairs and 3-passenger seat/bed.

Below: A driver's side air bag to supplement the safety belts is standard equipment.

Some equipment shown on these pages may be optional.



Above: The extended-length Aerostar Eddie Bauer in Electric Red Clearcoat Metallic and unique Mocha Frost Metallic lower accent treatment.

Left: The optional floor console includes cup holders and storage bins.

Below: The versatile rear seat/bed option (standard in Eddie Bauer) is the kind of feature you would find in a luxurious van conversion.



Aerostar offers optional integrated child safety seats.

AEROSTAR EDDIE BAUER

The Eddie Bauer is indeed a very special Aerostar. Forged aluminum wheels, a unique two-tone paint treatment, Privacy™ glass, and a roof luggage rack grace the exterior.

Inside, dual front captain's chairs (with power lumbar supports) with 2- and 3-passenger seat/beds add up to comfortable seating for 7. The front and rear AC/heating system has a separate fan control for the 2nd row passengers. The stereo system includes a cassette player with premium sound components and a graphic equalizer.

Electronic automatic transmission, speed control and tilt steering wheel, electronic instrument cluster, trip computer, autolamp system, auto-dim mirror, power windows and locks and electric remote mirrors are also standard. And you get a special luggage set sent to you from Eddie Bauer.

AEROSTAR XL, XL PLUS AND XLT

AEROSTAR WAGON XL

Aerostar XL has 3.0 liters of V-6 power and seating for five. And it has the features you would expect in a well-equipped mini-van: power steering, electronic AM/FM stereo radio with digital clock, tinted glass, rear window wiper/washer, full wrapover door trim, interval windshield wipers. And there's more, including air conditioning and under-seat storage bin, in the Preferred Equipment Package.

AEROSTAR WAGON XL PLUS

The Aerostar XL Plus has everything you get in the standard XL — plus standard seating for seven: front captain's chairs; 2- and 3-passenger rear bench seats. An under-seat storage bin, too.

And the XL Plus Preferred Equipment Package adds even more. It includes the convenience group (Privacy™ glass, speed control and tilt wheel, the distinctive deluxe tape stripe) as well as the cool comfort of air conditioning. All things considered, the XL Plus model just might be Ford Aerostar value at its very best.

AEROSTAR WAGON XLT

Aerostar XLT is distinguished by its own lower two-tone paint treatment and premium wheel trim. Inside its roomy 7-passenger interior you'll find deluxe appointments and comfort features including dual front reclining captain's chairs with 2- or 3-passenger bench seats or optional 2- and 3-passenger combination seat beds. There are convenience features such as deluxe door/quarter trim panels, air conditioning, speed control/tilt steering wheel, automatic transmission, and the illuminated entry system.

Choose the XLT Preferred Equipment Package and get power windows/door locks, electric remote-control mirrors, Privacy™ glass, rear defroster, and the electronic AM/FM stereo sound system with cassette player which includes six speakers, rear controls, and two sets of stereo headphones which will be mailed separately (you'll receive them approximately 4 to 6 weeks after delivery of your new vehicle).



Above: Aerostar XLT interior in Medium Grey. Standard 7-passenger seating features dual front captain's chairs (with power lumbar adjustment and map pockets) and 2- and 3-passenger rear bench seats.

Left: Aerostar XL Plus in Ruby Red Clearcoat Metallic.



Above: Extended-length Aerostar XLT in Bimini Blue Clearcoat Metallic.

Left: Aerostar XL Plus in Raven Black with the optional Sport Appearance Package, which includes silver metallic bumper/lower bodyside paint and other features (see the back cover for complete package contents).

Some equipment shown on these pages may be optional.

DESIGN & SAFETY

Because Aerostar is such an ideal family vehicle, its design and engineering technologies work to make driving efficient and comfortable. But far more important than this is safety, and built into Aerostar are features designed to help protect you and your family while you're on the road.

A driver's side air bag to supplement the safety belts, for example, is standard. Used in conjunction with the seat belts, it's one of the most effective protection devices in existence today.

The rear anti-lock brake system, also standard, is computer controlled. And along with the added stopping control the rear anti-lock brakes can provide, you may choose the extra traction of Aerostar's state-of-the-art electronic 4-wheel drive (4WD) option.

Aerostar 4WD is engineered to help you maintain control

in all kinds of weather. And the system operates "full time," without your having to touch a single switch.

Normally, the system assigns 1/3 of the engine power to the front driving wheels and 2/3 to the rear driving wheels. But when wheel slippage is detected, the computer briefly "locks" the drive shaft of the slipping wheel to the drive shaft (front or rear) with *non-slipping* wheels.

The transfer case differential lock is then released and the computer "checks" to see if slippage still exists. If so, the shafts are relocked. This cycle is repeated until normal 4-wheel traction is achieved.

Some other notable features you'll find standard in Aerostar are a front and rear energy-absorbing structure, energy-absorbing steering column and steering wheel, and a rear window wiper/washer.

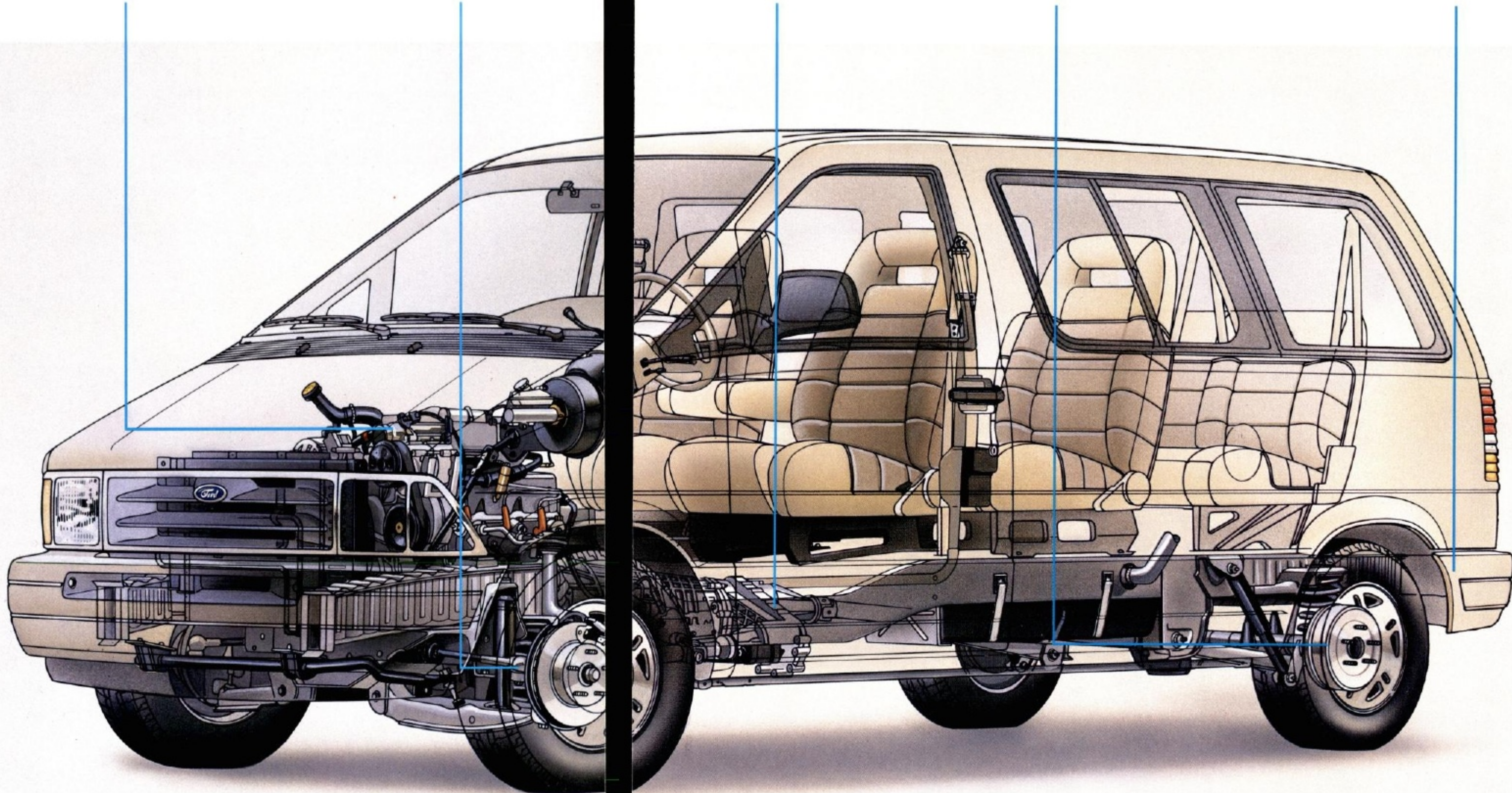
The 3.0-liter V-6 is standard. The 4.0-liter V-6 is included with Eddie Bauer extended-length models and all 4WD models; optional with extended-length 2WD models. Both engines feature multi-port electronic fuel injection controlled by computer.

The 4-corner coil spring suspension is equipped with nitrogen gas-pressurized shock absorbers for a ride that is smooth, yet firm enough for rough going. Plus a front stabilizer bar and variable-rate rear coil springs which enhance handling.

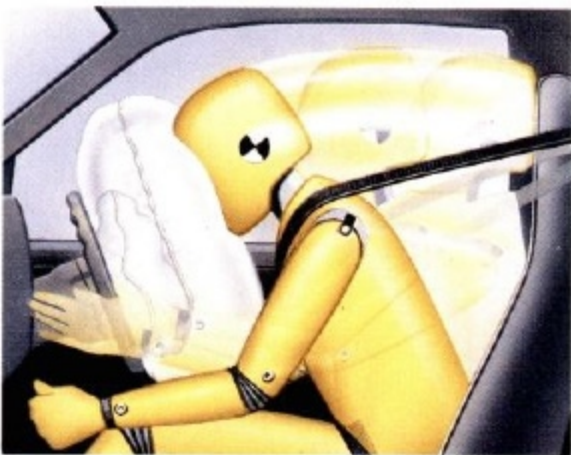
A 5-speed manual overdrive transmission is standard. The optional 4-speed automatic features an electronic torque converter clutch; its brake shift interlock feature is designed to prevent shifting into gear unless your foot is on the brake pedal.

The anti-lock rear brake system is designed to inhibit braking-induced rear wheel lockup under most operating conditions. When it detects rear-wheel lockup, the system modulates rear brake pressure, providing more controlled rear braking.

A properly equipped regular-length 2WD Aerostar Wagon is rated to tow up to 4,800 lbs. (reduced by passenger and cargo weight in the towing vehicle). With the 4WD Aerostar, driving control in towing applications is enhanced under most conditions.



Integrated child safety seats are available with either the 2-passenger bench seat or the 2-passenger combination seat/bed. Each seat has a 5-point restraint system and is designed to carry a child at least one year of age, 20 to 60 pounds, and less than 40 inches tall. And the cloth liner can be removed, so the seats are not only easy to use but easy to clean.



Aerostar standard equipment includes a driver air bag to supplement the safety belts. Outboard occupants, front and rear, have 3-point lap and shoulder restraints.



(a) Aerostar stereo systems provide rear radio controls and headphone jacks. The headphones, included with the optional electronic AM/FM stereo radio/cassette tape player, are shipped separately after delivery.

(b) Left to right: forged aluminum wheels; premium wheel covers; styled wheel covers; full-face wheel covers.

(c) Optional speed control.

(d) Power windows, door locks and dual electric mirrors comprise the Power Convenience Group.



COLOR AVAILABILITY

	XL/XL Plus	XLT	Eddie Bauer
Mocha Frost Clearcoat Metallic	■	■	
Medium Mocha Clearcoat Metallic	■		■
Ruby Red	■	■	
Electric Red Clearcoat Metallic	■	■	■
Medium Platinum Clearcoat	■	■	
Deep Emerald Green Clearcoat Metallic	■	■	
Twilight Blue Clearcoat Metallic	■	■	■
Bimini Blue Clearcoat Metallic	■	■	
Cayman Green Clearcoat Metallic	■	■	■
Raven Black	■	■	■
Silver Clearcoat Metallic	■	■	
Oxford White	■	■	■

Note: Interior trim colors are Crystal Blue, Ruby Red (XL only), Medium Grey and Mocha. Sport appearance package exterior color choices are Cayman Green Clearcoat Metallic, Electric Red Clearcoat Metallic, Bimini Blue Clearcoat Metallic, Silver Clearcoat Metallic and Raven Black. See your dealer for exterior/interior compatibility as well as two-tone combinations.



Standard rear anti-lock brakes are computer-controlled for better braking performance under adverse conditions. The easily visible high-mount stop lamp alerts traffic whenever your brakes are applied.

Some equipment shown on these pages may be optional.

AEROSTAR PREFERRED EQUIPMENT PACKAGES

P = Package feature (content is subject to change)
S = Standard O = Optional

Appearance/Convenience/Safety

XL Plus convenience group:

Privacy™ glass	O	P	P	P
Speed control and tilt steering wheel	O	P	S	S
Deluxe paint stripe (1)	-	P	-	-

XLT convenience group:

Electric rear window defroster	O	O	P	S
Power convenience group (2)	O	O	P	S
Electronic AM/FM stereo radio with cassette tape and clock (3)	O	O	P	S

Air conditioning	P	P	S	-
------------------	---	---	---	---

Front and rear auxiliary air conditioner/heater	O	O	O	S
---	---	---	---	---

Under-seat storage bin	P	S	S	S
------------------------	---	---	---	---

Integrated child safety seats	O	O	O	O
-------------------------------	---	---	---	---

Floor console with cup holders and storage bins (1)	O	O	O	P
---	---	---	---	---

Light group (4)	O	O	S	S
-----------------	---	---	---	---

Electronics group (5)	-	-	O	S
-----------------------	---	---	---	---

Exterior appearance group (6)	O	O	O	-
-------------------------------	---	---	---	---

Sport appearance package (7)	O	O	O	-
------------------------------	---	---	---	---

Swing-lock outside mirrors	O	O	-	-
----------------------------	---	---	---	---

Body-side protection molding	O	O	O	O
------------------------------	---	---	---	---

Luggage rack	O	O	O	S
--------------	---	---	---	---

Forged aluminum wheels	-	O	O	S
------------------------	---	---	---	---

Seating Capacity

Five: dual bucket seats; 3-passenger rear bench seat	S	-	-	-
--	---	---	---	---

Five: dual captain's chairs; 3-passenger rear bench seat	O	-	-	-
--	---	---	---	---

Seven: dual captain's chairs (power lumbar and map pockets in XLT); 2- and 3-passenger bench seats	O	S	S	-
--	---	---	---	---

Seven: dual captain's chairs (power lumbar and map pockets in XLT and Eddie Bauer); 2- and 3-passenger seat/beds	-	O	O	S
--	---	---	---	---

Seven: quad captain's chairs; 3-passenger bench seat	-	-	O	-
--	---	---	---	---

Seven: quad captain's chairs; 3-passenger seat/bed (premium cloth or leather with Eddie Bauer)	-	-	O	O
--	---	---	---	---

Performance

Electronic 4-wheel drive (4WD)	O	O	O	O
--------------------------------	---	---	---	---

3.0L V-6/5-speed manual overdrive	S	S	-	-
-----------------------------------	---	---	---	---

3.0L V-6/automatic overdrive (available on 2WD models only)	O	O	S	S
---	---	---	---	---

4.0L V-6/H-D automatic overdrive (standard with 4WD models and Eddie Bauer extended-length wagon; optional with extended-length 2WD models only)	O	O	O	S
--	---	---	---	---

Limited-slip rear axle	O	O	O	O
------------------------	---	---	---	---

Engine block heater	O	O	O	O
---------------------	---	---	---	---

Trailer towing package (8)	O	O	O	O
----------------------------	---	---	---	---

P215/70R14SL WSW all-season	O	O	O	O
-----------------------------	---	---	---	---

P215/75R14SL BSW all-season (9)	O	O	O	O
---------------------------------	---	---	---	---

(1) May be deleted for credit without loss of discount. (2) Power windows and door locks and dual remote-control electric mirrors. (3) Rear radio controls, headphone jacks, and six speakers. The headphones are mailed separately, about four to six weeks after delivery of vehicle. (4) Glove box, under instrument panel, under-hood and illuminated entry system. (5) Autolamp system, automatic dim mirror, and the electronic instrument cluster (speedometer, tachometer, warning center, trip computer and system scanner). Also includes the super sound system: electronic AM/FM stereo radio with cassette tape and clock; premium sound; graphic equalizer. (6) Styled wheel covers, outside swing-lock mirrors, Privacy™ glass and deluxe two-tone paint. (7) Body-side and liftgate sport striping, body color headlamp frames and grille, high-gloss silver integral running boards, and high-gloss silver metallic paint on bumper and lower body-side. Available only with 2-wheel-drive models. (8) Class I wiring harness, heavy-duty turn signal flasher and limited-slip axle. (9) Not available with 4WD or regular-length 2WD models. Required and available only with 7-passenger extended-length 2WD models. (10) Courtesy lamp switches (all doors) and cargo lamp. (11) Extended model has one additional bin in the right-hand panel and two bins in the floor.

MAJOR STANDARD FEATURES

Exterior

Color-coordinated front and rear bumpers

Tinted glass

Aero foldaway mirrors (RH convex)

Flush windshield, body-side and liftgate window surround moldings

Underbody space saver spare tire carrier (except with regular-length 4WD)

Front spoiler

Wheel trim: full face wheel covers (XL, XL Plus); premium wheel covers (XLT); forged aluminum wheels (Eddie Bauer)

Sliding glass in the side door and opposite windows

Interior

Driver air bag to supplement the safety belts

Color-keyed integral lap/shoulder belts for all outboard occupants; rear center lap belt

Full-length color-keyed carpeting

Full wrapover door trim

Carpet-covered engine cover

Inside fuel filler door release

Interval front wipers and rear window washer/wiper

Full-length color-keyed cloth headliner

4-gauge mechanical instrumentation (XL, XL Plus, XLT)

Electronic instrumentation (Eddie Bauer)

Front dome and stepwell lights

Convenience group (10)

Rear vinyl-covered quarter trim panels

Electronic AM/FM stereo radio with digital clock, rear radio controls, headphone jacks and six speakers (XL, XL Plus, XLT); super sound system (Eddie Bauer)

3 rear body-side storage bins (2 on Eddie Bauer with auxiliary A/C and heater) (11)

Separate air conditioning/heater fan control for rear 2nd row passengers (Eddie Bauer)

Cloth-covered sun visors with sunglass strap and visor mirror (illuminated mirror with XLT and Eddie Bauer)

Special Eddie Bauer luggage set (Eddie Bauer only)

Functional

Multi-port electronic fuel injection with EEC-IV computer

5-speed manual overdrive transmission

Power steering

Power brakes with rear anti-lock system

Four-corner coil spring suspension system with gas-pressurized shock absorbers

P215/70R14 BSW all-season tires

21-gallon fuel tank



Printed on recycled paper
10% post-consumer waste

OPTIONS AVAILABILITY

Options shown or described in this catalog are available at extra cost and may be offered only in combination with other options or subject to additional requirements or limitations.

PRODUCT CHANGES

Following publication of the catalog, certain changes in standard equipment, options, prices and the like, or product delays, may have occurred which would not be included in these pages. Your Ford Dealer is your best source for up-to-date information. Ford Division reserves the right to change product specifications at any time without incurring obligations.



BUMPER-TO-BUMPER COVERAGE

The 36-month/36,000-mile bumper-to-bumper coverage of Ford's new vehicle limited warranty covers the complete vehicle (except tires, battery, service adjustments and other items covered under separate provisions) against defects in factory-supplied materials or workmanship. For complete information, see your Ford Dealer.



Optional Ford Extended Service Plans can cover major components on new Ford cars and light trucks for longer than the basic warranty. Your dealer has full details.

FORD CITIBANK CREDIT CARD

Using your Ford Citibank Visa® or MasterCard® could earn you hundreds, even thousands of dollars from Ford toward the purchase or lease of a new Ford, Lincoln or Mercury product. To apply or get more information, call 1-800-374-7777. Or visit a Ford or Lincoln-Mercury dealer, or a branch office of Citibank.



Ford Credit is a full service company that makes a wide variety of financing and leasing programs available to qualified buyers through the Ford Dealer of your choice. Through Ford Credit's financing or Red Carpet leasing, arrangements suited to your special needs can be made quickly and conveniently right at the dealership. Ask your Ford Dealer for the facts on any of Ford Credit's financing or leasing plans.

ROADSIDE ASSISTANCE PROGRAM

Every new Ford includes the assurance of an emergency Roadside Assistance Program provided by Ford Auto Club, Inc. during the 3-year/36,000-mile bumper-to-bumper warranty period. Help is a toll-free phone call away 24 hours a day, anywhere in the continental United States should you need any towing assistance, fuel delivery, tire change, a jump start or even help when you're locked out of your vehicle. Ask your Ford Dealer for complete details on the Ford Roadside Assistance Program and a copy of the limited warranty.