

F O R D 1 9 9 4

# CROWN VICTORIA

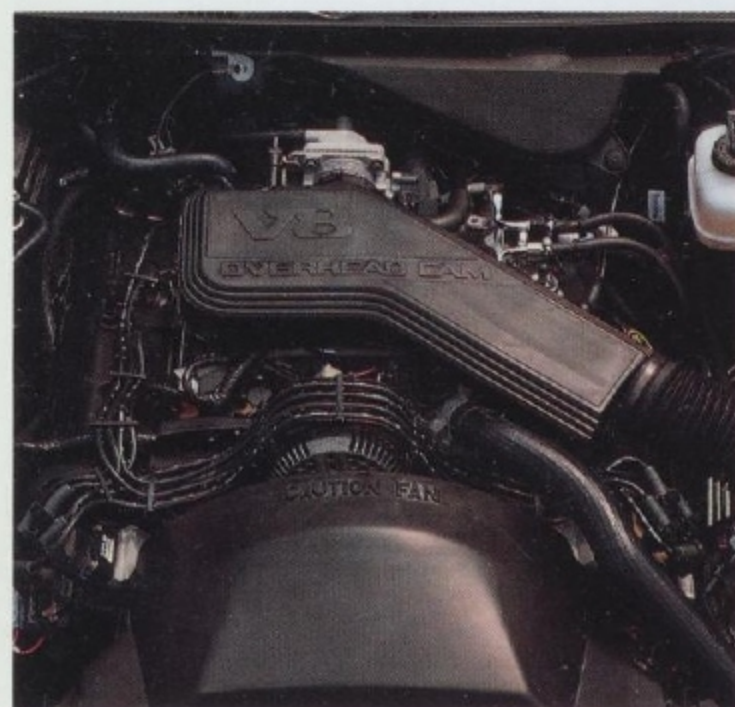
## INTERCEPTOR POLICE PACKAGE







The 4.6L overhead cam V-8, the most advanced engine in its class, features sequential fuel injection (SEFI) and one of the world's most sophisticated and powerful engine control computers – the EEC-IV.



There's nothing small about the Ford Crown Victoria Police Interceptor. This is a full-size road car. Big on performance and handling. Big on comfort and convenience.

You can expect even more in '94. To begin with, a Dual Air Bag Supplemental Restraint System (driver and right-front passenger) is standard – helping to provide protection in certain moderate to severe frontal collisions.

So are bucket seats, designed to provide maximum available space for auxiliary police equipment.

Some things haven't changed.

Crown Victoria is powered by a computer-controlled 4.6L overhead cam V-8 engine with state-of-the-art sequential fuel injection. This advanced engine is teamed with an electronically controlled 4-speed automatic overdrive transmission to deliver a responsive performance.

The computer controlled "speed sensitive" steering system provides more power assist

at low speeds and progressively reduces power assist for improved road feel at higher cruising speeds.

Severe duty 4-wheel disc brakes provide Crown Victoria Interceptor with impressive stopping power.

Optional 4-wheel anti-lock braking features Electronic Traction Assist for improved acceleration and stability on slippery roads and to improve the vehicle's ability to climb grades in ice and snow.

Uniquely tuned suspension provides firm and precise handling. The front end is designed for directional control and reduced tire wear. Front and rear stabilizer bars help minimize body roll in sharp lane-changing maneuvers or when cornering. Nitrogen gas-pressurized shocks are tuned for optimum ride comfort and road stability.

The 1994 Crown Victoria Interceptor is a lot like the men and women who drive it – it's at the head of its class.

New for '94, bucket seats are standard. Refer to options page or ordering guide for complete seat and trim selection.

See your Ford Fleet Representative for information on the proper placement of interior auxiliary police equipment.

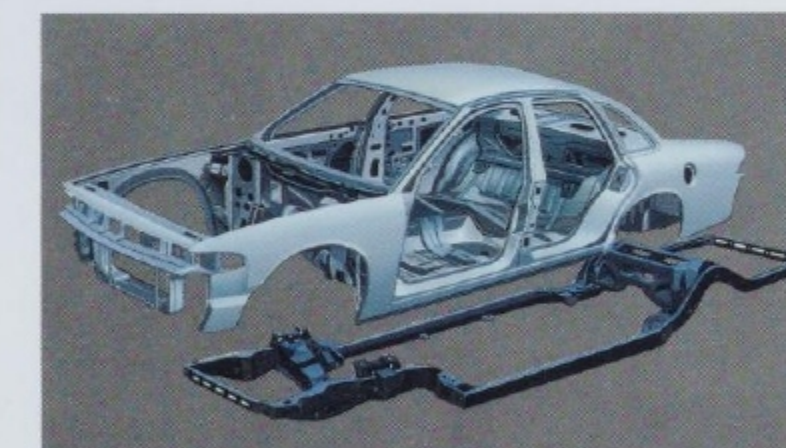
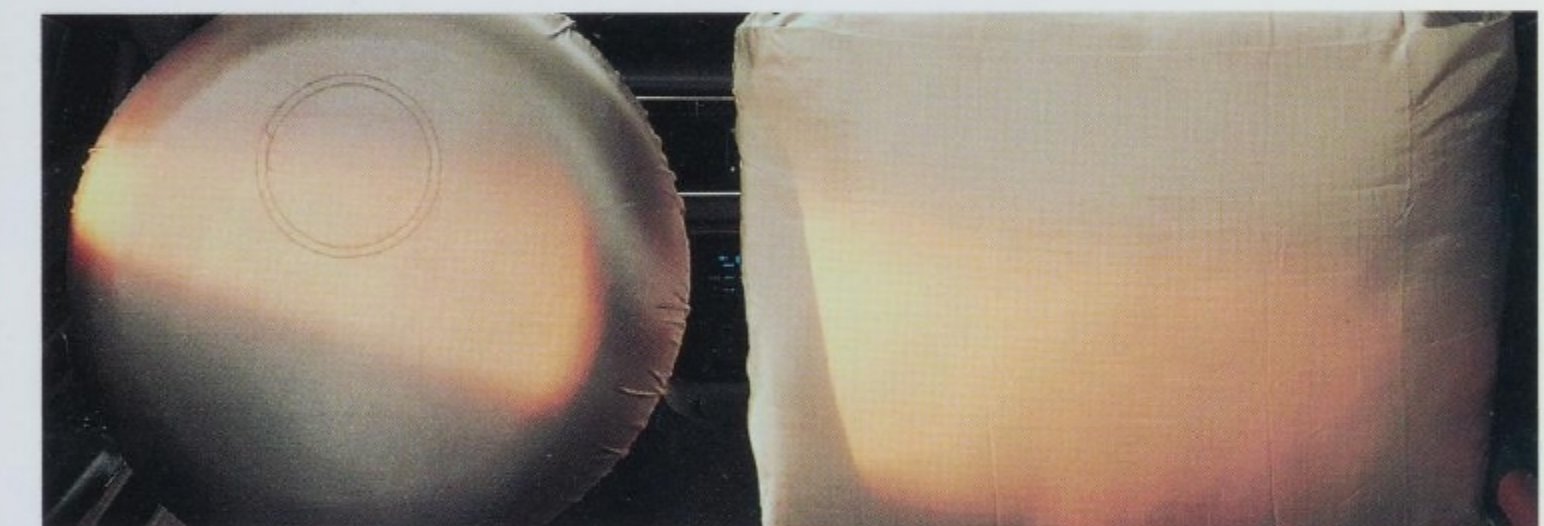


Body-on-frame construction provides a comfortable, quiet ride; and a stainless steel exhaust system contributes to strength and durability.

With over 20 cubic feet of space, Crown Victoria's deep-well trunk is the largest in its class. The Interceptor has heavy duty rubber trunk covering with carpeted spare tire cover.



## THE SAFE DEPLOYMENT OF POWER



The standard Dual Air Bag Supplemental Restraint System (driver and right-front passenger) in conjunction with the conventional safety belts, provides added protection for the head and chest in certain moderate to severe frontal collisions – roughly equivalent to striking a parked car of comparable size at 28 mph and inflates in less than 1/10 of a second.





# POLICE INTERCEPTOR FEATURES AND OPTIONS

The 1994 Crown Victoria Police Interceptor has reinforced and calibrated components for severe duty application. Here are the major Standard Equipment, Police Interceptor Upgrades, and Optional Features.

Major Standard Equipment	
Performance and Durability	
Ignition system, distributorless	
Power steering, speed-sensitive, variable assist	
Voltage regulator, electronic	
Wheel covers, full deluxe	
Comfort and Convenience	
Air conditioning, manual with positive shutoff	
Carpeting, color-keyed floor	
Clock, electronic digital	
Cupholders, dual, ashtray-mounted	
Fuel filler cap, tethered	
Gauge cluster, (voltmeter, oil, water, fuel); and trip odometer	
Glove box, illuminated	
Map pockets	
Radio – electronic AM/FM stereo	
Tilt steering column, stalk controls for washer/wiper, hi/lo beams, turn signal, and flash-to-pass	
Windows, power	
Windshield wipers, interval, dual-jet washers	
Safety	
Dual Air Bag Supplemental Restraint System, driver and right-front passenger*	
Headlamps, automatic with on/off delay	
Mirrors, day/night inside rear view and dual power remote control side	
Seat belts, 3-point active outside, front and rear, lap center rear	

Police Interceptor Upgrades	
Enforcement Modifications	
Accessory feed wires: one ignition feed (3 connectors, 30 amp fuse) one direct feed (3 connectors, 40 amp fuse)	
Bodyside molding delete, front door (molding shipped in trunk)	
Electronic speedometer, certified calibration in 2 mph increments, 0 to 140 mph	
Removable headliner, with two added roof reinforcements	
Performance and Durability	
Alternator, 130 amp	
Axle ratio, rear 3.27:1	
Battery, heavy-duty, 84/amp-hr (850 CCA) with heat shield	
Brakes, 4-wheel disc, police level, with metal front dust shields	
Cooling package, police level, with 8-blade plastic fan	
Drive shaft and U-joints, heavy-duty	
Engine, 4.6L with police pursuit calibration	
Engine oil cooler	
Exhaust system, stainless steel, dual	
Frame and body mounts, heavy-duty	
Power steering oil cooler, front-mounted	
Suspension, police, heavy-duty front and rear springs shock absorbers and stabilizer bars	
Tires, P225/70HR15 100H BSW, all-season speed rated with conventional spare	
Transmission, AOD-E with police calibration	
Transmission oil cooler, external, front-mounted	
Underhood insulation deleted	
Wheels, heavy-duty steel, 15" x 6.5"	
Comfort and Convenience	
Door lock release, remote on left door trim panel	
Map, dual-beam map	
Light, engine compartment	
Lock system, single key (all vehicles different)	
Seats, vinyl bucket – manual reclining with anti-stab plate driver/passenger – excludes rear armrest*	

Optional Features	
Law Enforcement Modifications	
Auxiliary fuse panel: fuses not supplied. three ignition leads (3 connectors, 20 amp fuse) three direct leads (3 connectors, 20 amp fuse)	
Hub caps	DSO/PLN
Noise Suppression Package (RFI) police radio	DSO/PWJ
Power lock, driver operated, rear doors inoperative	DSO/PR8
Power windows, driver operated only	DSO/PLM
Radio antenna cable routed to luggage compartment without hole in roof	DSO/*
Roof reinforcement for roof-mounted signal equipment, extra bow with center plate to header	DSO/PRS
Speakers, front left-hand and right-hand for police radio – located in front doors with lead coiled below center instrument panel	DSO/DRC
Spotlight (left/or dual) pillar-mounted with 6" clear halogen bulb	DSO/**
Spotlamp Prep (left/or dual) mandatory for dealer/customer installed spotlamp	DSO/**
Warning lights: Package tray	DSO/PLT
Underside decklid	DSO/PLU
Wiring packages: for auxiliary police equipment Front	DSO/PW7
Roof	DSO/**
Performance and Durability	
Differential, limited slip (Traction Lok); n/a with ABS	RPO/45D
Floor mats: Front, color-keyed carpet	RPO/12H
Rear, color-keyed carpet	RPO/12Q
Front and rear heavy-duty black rubber (replaces carpet)	RPO/127
Hose clamps, aircraft-type, radiator and heater	DSO/PCF
Hoses, silicone with aircraft-type clamps	DSO/PCD
Tires, P225/70R15 100H BSW, all-season, General brand	DSO/PTE
Comfort and Convenience	
Police Group 1 Rear window defroster, power lock group (optional in PEP 120P, included in PEP 122P)	RPO/68B
Heater, engine block immersion	RPO/41H
Light switches, inoperative door and courtesy	DSO/PLA
Lock system, single key/all vehicles alike	DSO/**
Map light, header-mounted (32 C.P.)	DSO/**
Radio: Electronic AM/FM stereo cassette	RPO/58H
Radio – delete	DSO/PR1
Seats: Cloth front buckets/cloth rear	RPO/6
Cloth front buckets/vinyl rear	RPO/M
Cloth front /vinyl rear split bench – heavy duty	RPO/3
Cloth split bench front/rear – non heavy duty, reclining	RPO/K
Cloth split bench, heavy duty	RPO/N
Vinyl split bench, heavy duty	RPO/E
6-Way power driver (n/a with cloth/vinyl HD split bench)	RPO/21A
Safety	
Anti-lock braking system, with Electronic Traction Assist	RPO/553

\* New for 1994.  
\*\* See Dealer or DSO Ordering Guide.  
DSO = Dealer Special Order.  
RPO = Regular Production Option.

## BUMPER-TO-BUMPER COVERAGE

The 36-month/36,000-mile bumper-to-bumper coverage of Ford's New Vehicle Limited Warranty covers the complete vehicle (except tires, battery, service adjustments and other items covered under separate provisions) against defects in factory-supplied materials or workmanship. For complete information, see your Ford dealer.



Optional Ford Extended Service Plans can cover major components on new Ford cars and light trucks for longer than the vehicle's basic warranty. Your Ford dealer has full details.

## MUNICIPAL LEASE/ PURCHASE FINANCING

Municipal Lease/Purchase Financing is available to state and local governments.

For details, call Ford Municipal Leasing, toll-free, at 1-800-241-4199.

## SPECIFY GENUINE FORD COLLISION REPAIR PARTS

Genuine Ford sheet metal and plastic replacement collision parts, such as hood, doors, fenders and bumper components, are the right choice – and for all the right reasons.

Genuine Ford parts are equal to original parts in fit, finish and structural integrity. Ford parts are the same as those used on new vehicles which are certified to meet Federal Motor Vehicle Safety Standards. And all Ford sheet metal parts are covered by the exclusive Ford Lifelong Sheet Metal Guarantee.

Ask your dealer to see a copy of this limited warranty. Don't settle for imitations. Ask your insurer to authorize genuine Ford collision parts.

## OPTIONS AVAILABILITY

Options shown or described in this catalog are available at extra cost and may be offered only in combination with other options or subject to additional ordering requirements or limitations.

## PRODUCT CHANGES

Following publication of the catalog, certain changes in standard equipment, options, prices and the like, or product delays, may have occurred which would not be included in these pages. Your Ford dealer is your best source for up-to-date information.

Ford Division reserves the right to change product specifications at any time without incurring obligations.



# 1994 CROWN VICTORIA POLICE PACKAGE SPECIFICATIONS AND DIMENSIONS

General	English	Metric
Wheelbase	114.4"	290.6 cm
Overall length	212.4"	539.5 cm
Overall height	56.8"	144.3 cm
Overall width	77.8"	197.6 cm
Tread:		
Front	62.8"	159.5 cm
Rear	63.3"	160.8 cm
Base model curb weight	3,776 lbs.	1713 kg
Fuel tank capacity	20 gals.	76 litres
Front Seat		
Head room	39.4"	100.1 cm
Shoulder room	60.6"	153.9 cm
Hip room	59.1"	150.1 cm
Leg room, maximum	42.5"	108.0 cm
Rear Seat		
Head room	38.0"	97 cm
Shoulder room	60.2"	152.9 cm
Hip room	59.0"	149.9 cm
Leg room, minimum	39.7"	100.8 cm
Luggage Compartment		
Luggage capacity	20.6 cu. ft.	583.3 litres
Liftover height	27.2"	69.1 cm
EPA passenger volume index	111.3 cu. ft.	3151.6 litres
Aerodynamics		
Coefficient of drag	.34	.34
Brakes		
Dual hydraulic, power four-wheel disc system		
Front disc diameter	11.1"	28.2 cm
Rear disc diameter	11.4"	29.0 cm
Total brake-swept area	421.9 sq. inches	2721.9 cm <sup>2</sup>
Electrical		
Heavy-duty alternator, 130 amp		
Heavy-duty battery, maintenance-free 84 amp-hr.		

## Engine: 4.6L V-8 SOHC

Displacement: 281 cubic inches; 4604.7 cm<sup>3</sup>  
 Sequential multi-port electronic fuel injection  
 EEC-IV electronic engine controls  
 Nominal compression ratio: 9.0:1  
 Cast-in-block accessory mounting brackets  
 Hydraulic timing chain tensioner  
 Interchangeable aluminum cylinder heads  
 Roller cam followers

## Horsepower and Torque Ratings

Horsepower: 210 net @ 4600 rpm  
 Torque: 270 lbs.-ft. net @ 3400 rpm

## Transmission: AOD-E

4-speed automatic  
 Electronic shift control  
 4th gear overdrive  
 4th gear lockout (in overdrive selector position)  
 Low-gear lockout - computerized logic prevents over-revving of the engine in low gear

## EPA Fuel Economy Ratings

City/highway 17/25 mpg; 27/40 L/100 km

## Chassis

Body-on-frame perimeter construction  
 Police suspension: independent SLA coil spring design with ball joints and front stabilizer bar, 1:1 ratio  
 Coil springs  
 Gas-pressurized hydraulic front shock absorbers, double-acting, vertical mount  
 Gas-pressurized hydraulic rear shock absorbers, double-acting, angle mount  
 Speed-sensitive steering, variable assist, parallelogram, front steer with center link  
 Ball and nut recirculating gears  
 Overall gear ratio: 16.4:1  
 Four-bar link rear suspension with stabilizer bar

## Wheels and Tires

Heavy-duty wheels and rims, 15" x 6.5"; 38.1 cm x 16.51 cm  
 P225/70HR x 15 All-season BSW tires with conventional spare

