

F O R D 1 9 9 4

VANS





Top: Econoline Regular Van in Silver Clearcoat Metallic.

Center: Econoline Super Van in Crystal Blue Clearcoat Metallic.

Left: An ergonomically designed instrument panel in Econoline and Club Wagon, which includes a multi-stalk control system on the steering column, makes operation easy.

Some equipment shown is optional.

The right van for the job at hand has made Ford #1 in America in cargo van sales, full-size and compact combined. That's one of the reasons why there are more Ford trucks on the road today than any other division.

Since 1960, when the first full-size Ford Econoline came off the assembly line, we have been building a solid reputation for delivering work-tough and quality-built cargo vans designed and engineered with a vigorous, ongoing commitment to rugged and

**Ford Trucks.
The Best Never Rest.™**

reliable performance. We know, as well as you do, just how much your business success depends on these qualities.

The commitment to continuous improvement that has made Ford America's most popular truck line is

stronger than ever. So you can look to us to continue being at the forefront, with vans designed and engineered with performance, dependability, efficiency — and your comfort and safety — always in mind.

1994 FORD ECONOLINE VAN AND CLUB WAGON

Today's full-size Ford Econoline vans have an impressive list of safety features, which includes a driver air bag (on select models) designed to supplement your safety belts. Rear anti-lock brakes are standard and a full 4-wheel anti-lock system is optional (standard on Club Wagon, RV Vans, RV Conversions/Cutaways).

Econolines have rugged body-on-frame construction and the "out-front" design that provides easy access to the engine compartment

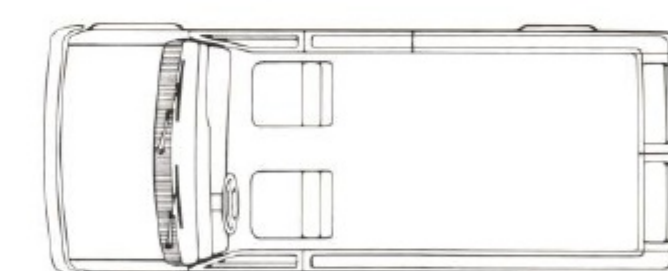
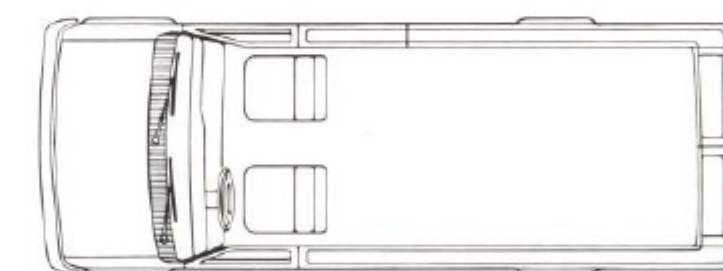
for routine scheduled maintenance.

There's a wide range of gasoline-powered I-6 and V-8 engines with computer-controlled, "multi-port" electronic fuel injection. High-torque diesel power as well, available in the heavier-duty models.

1994 FORD AEROSTAR VAN

Aerostar is versatile, comfortable, spacious, and tough — pretty much everything you could ask for in a compact cargo van. Its list of standard safety features includes a driver air bag to supplement your safety belts.

And with Aerostar's choice of regular- or extended-length bodystyle, multi-port electronically fuel-injected 3.0-liter or 4.0-liter V-6 power, and 2-wheel drive or 4-wheel drive, you'll find it easy to find the right Aerostar Van to fit your specific requirements.

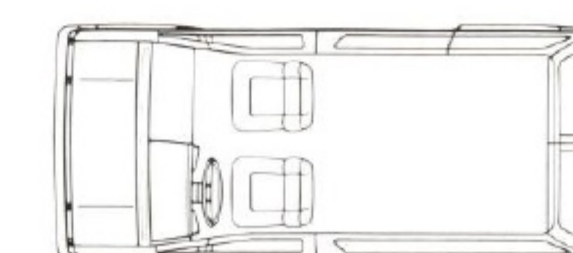
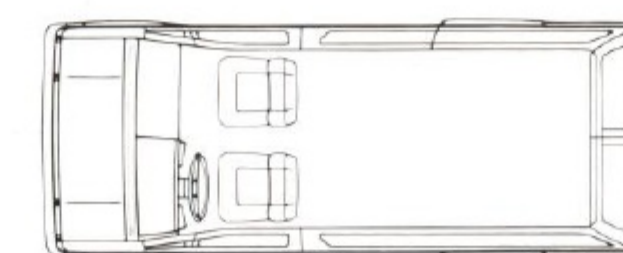


THE RIGHT VEHICLE FOR YOUR JOB

ECONOLINE VAN:

□ 138" Wheelbase Super Van

□ 138" Wheelbase Regular Van



AEROSTAR VAN:

□ 118.9" Wheelbase Extended-length

□ 118.9" Wheelbase Regular-length

CONTENTS

Econoline Van	4-7
Econoline Specifications and Dimensions	8-9
Club Wagon	10-11
Aerostar Van	12-13
Econoline Cutaway Chassis	14-15
Econoline and F-Super Duty Stripped Chassis	16-17
Econoline and Aerostar Trailer Towing	18

When we designed today's Econoline Van, we made changes to make it better, not just different.

□ Econoline was designed to be the highest-quality full-size cargo van we have ever built. Precise fit and finish and an absence of exposed coach and lap joints contribute to a better appearance.

□ Advanced aerodynamics enhances styling and reduces wind resistance. A low .39 coefficient of drag contributes to Econoline's functional efficiency.

□ Econoline safety features include a driver air bag (all models except the

E-350) to supplement your safety belt and a computer-controlled rear anti-lock brake system (4-wheel anti-lock brakes are optional). There's also an energy-absorbing front end structure, a self-adjusting parking brake, a large window area for visibility, a high-mount rear stop lamp, front- and side-door intrusion beams and a brake/shift interlock system.

□ The interior is designed to help make the day-to-day operation of your Econoline Van more convenient. The controls, some at your fingertips on the steering column, are easy to

operate. The instruments are designed for legibility and are positioned to be read easily. Backlit dials and lighted pointers enhance night visibility.

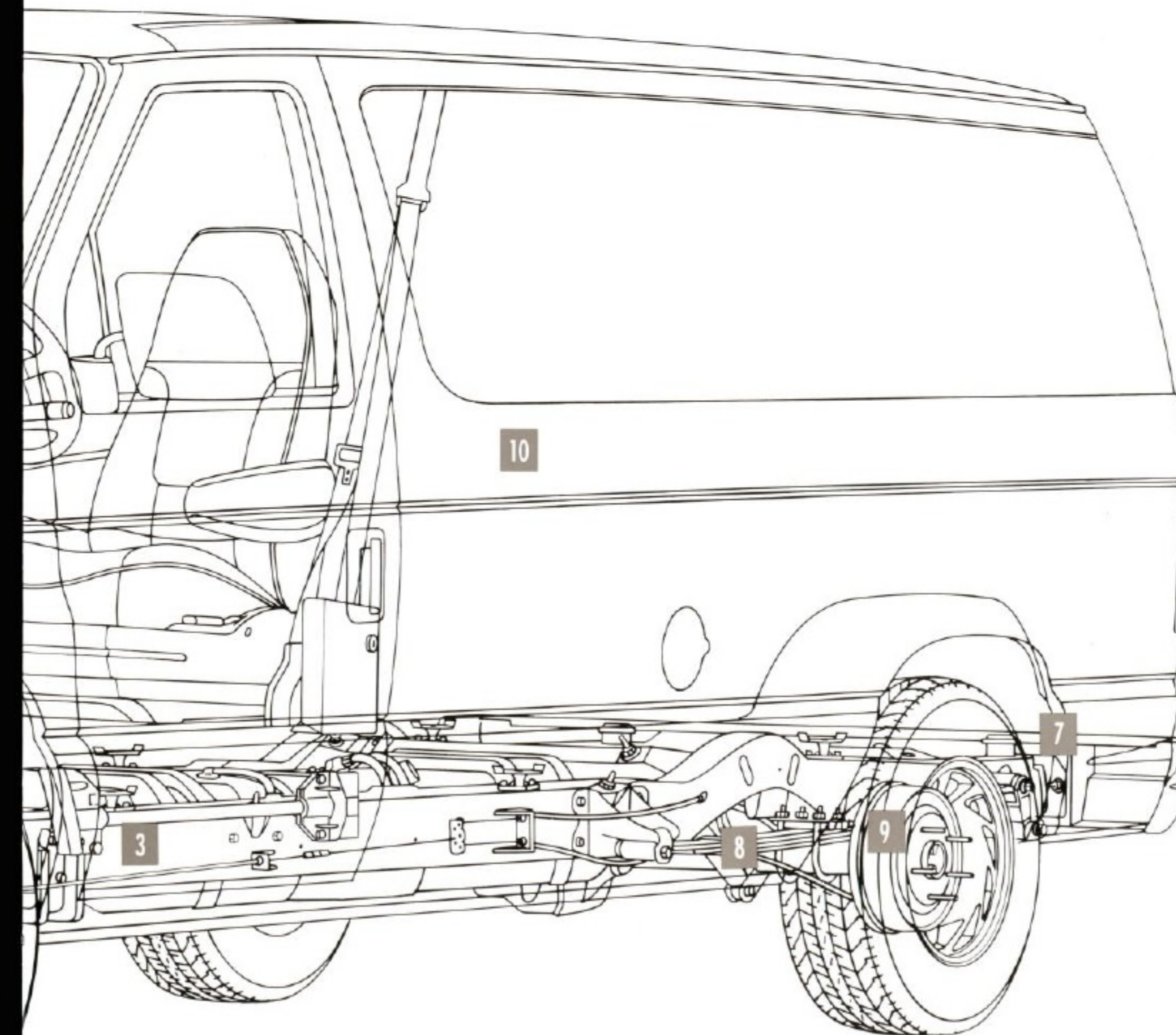
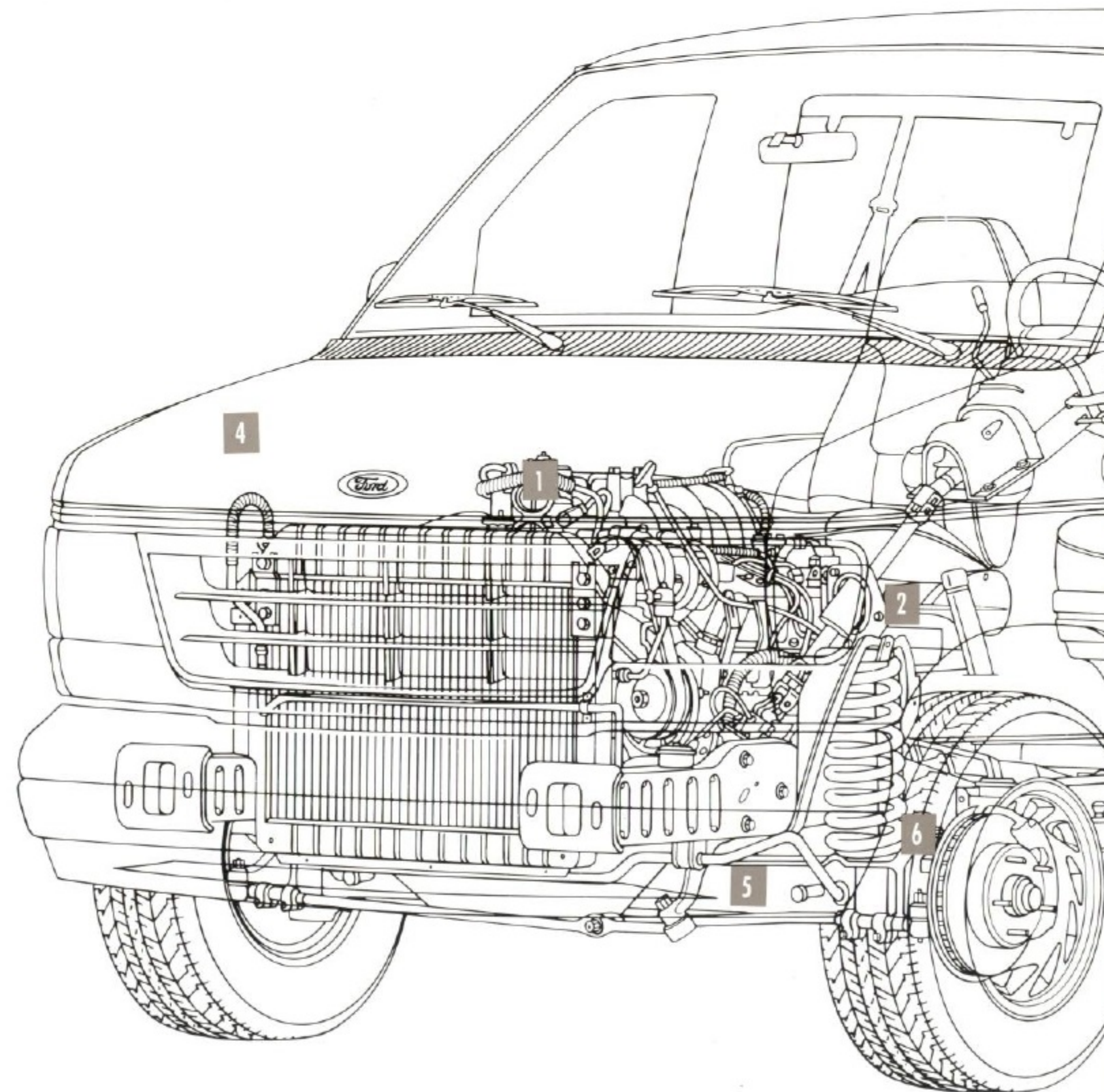
□ High-back bucket seats are also part of an interior that's designed to make job time more comfortable.

□ Two side door designs are available: (1) The 60/40 side doors provide flexibility for loading and easy access to the cargo area; (2) The optional sliding side door can make working in tight spaces easier. A handy rear step bumper in medium titanium is optional for the standard model. Chrome is

available for all trim levels (see your dealer for availability).

□ Double-wall bodyside sheet metal construction helps prevent damage from shifting cargo. It's in the Ford tradition of *Built Ford Tough!*

□ Econoline is designed for excellent "conversion-ready" capability. The heater and air conditioning taps are among the features designed to easily accommodate aftermarket installations. The design of the roof rail reinforcements and double-wall bodyside sheet metal construction are also great conversion-oriented features.



1 Every Econoline gas-powered engine is equipped with multi-port electronic fuel injection for precise fuel metering, easy starting, and excellent throttle response. It's governed by Ford's EEC-IV engine control computer.

2 Two optional electronic 4-speed automatic overdrive transmissions (E40D and 4R70W) are designed to provide improved shift timing, fuel economy (EPA ratings unavailable at press time), and performance over vacuum- or cable-controlled systems. The Transmission Control Switch is useful for 3rd gear engine braking on downgrades.

3 Among full-size vans, only Econoline has the advantages of body-on-frame construction. The parallel ladder-type frame has full-length, heavy-gauge side rails with up to six crossmembers for a minimum yield strength of 36,000 pounds per square inch (psi). And it permits the direct attachment of a weight distributing towing hitch.

4 "Out-front" design. One of several advantages of this Ford-exclusive feature is 27 key service items located under the hood and easily accessible for maintenance. When time is money, fast servicing can help reduce costs.

5 Twin-I-Beam independent front suspension is another feature you'll find only in a full-size van built by Ford. It's designed for ruggedness as well as ride smoothness and control. Each wheel has its own forged I-beam axle and separate big coil spring to handle rough road conditions independently. The coil springs are computer-selected to match the gross vehicle weight rating (GVWR) and the weight of options.

6 You can have the caster/camber of Econoline's Twin-I-Beam independent front suspension adjusted at your Ford Dealer to match the ride/handling characteristics more closely to the kinds of loads you'll be carrying.

7 There's more room for cargo because the spare is stored conveniently under the body.

8 Rear leaf springs and finely tuned shock absorber valving combine with the adjustable Twin-I-Beam front suspension and a responsive steering system to deliver excellent ride and handling.

9 The computer-controlled rear anti-lock braking system is included in Standard and XL Vans. It's designed to inhibit braking-induced rear-wheel lockup under most conditions. An electronic module activates solenoids to modulate rear brake pressure anytime rear wheel lockup is detected by the system. The result is more controlled braking. A 4-wheel anti-lock braking system is standard with RV Vans and optional with Standard and XL Vans.

10 Double-wall bodyside sheet metal construction is a big feature of today's Econoline Van. It's in the tradition of engineering trucks that are Built Ford Tough!

FORD ECONOLINE VAN. HARD WORKING AND HARD TO BEAT.

When it comes down to delivering all the important benefits you would look for in a hard-working full-size van, Econoline's capability is impressive.

Among the features that for many years has set the Econoline apart from other vans is the "out-front" design. It offers conveniences that can make your job easier.

The engine is located forward of the passenger compartment, providing more than 9 inches of clearance between the engine cover and the driver's seat for easy access to the cargo compartment.

Because of the forward location of the wheelhousings, entering or leaving by the front doors is convenient. And especially important, 27 key service items are under the hood, making routine scheduled maintenance easy.

Outstanding also is Econoline's wide range of performance choices.

You have four gas-powered engines to choose from, all equipped with multi-port electronic fuel injection for precise fuel metering, easy starting, and excellent throttle response.

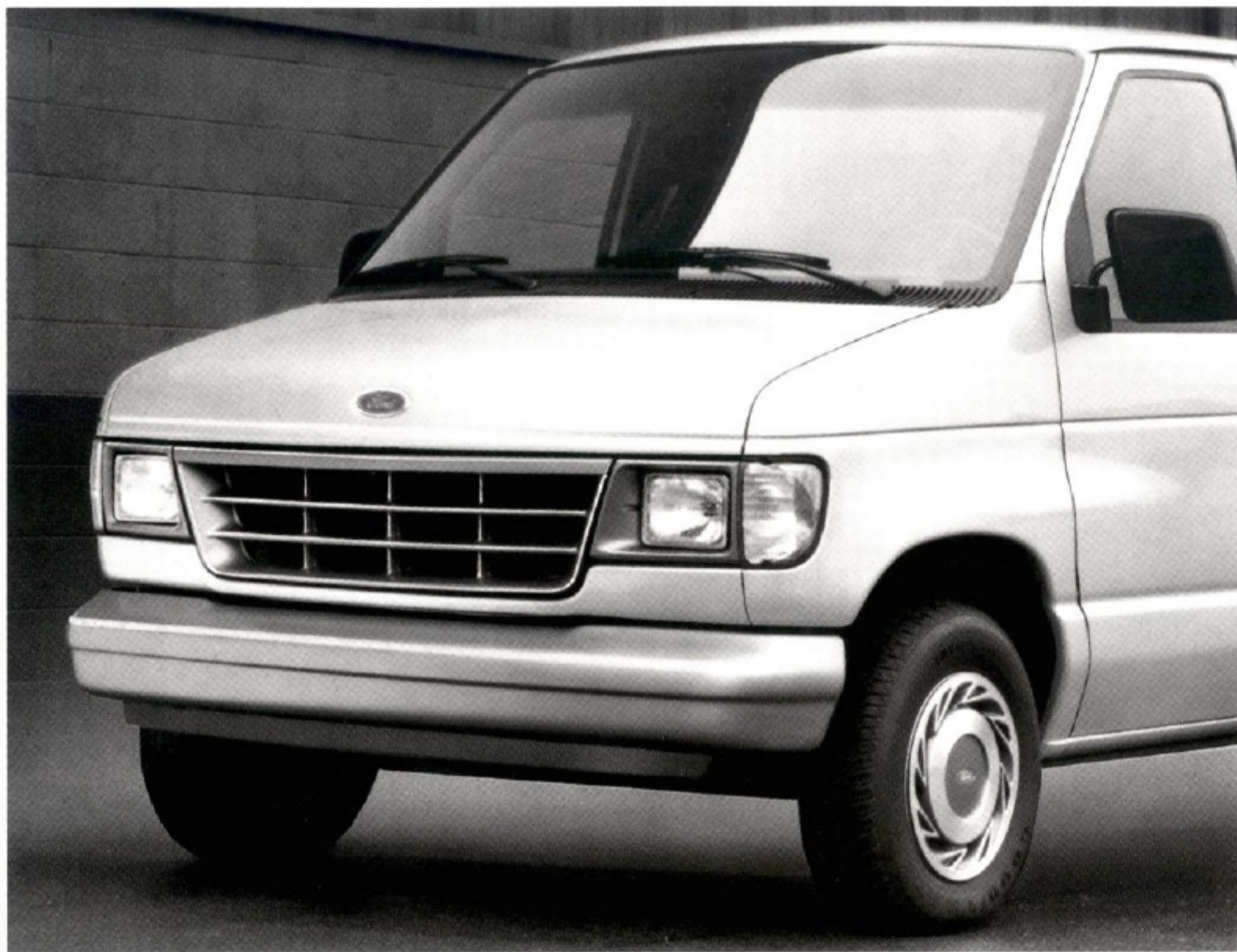
There's the standard 4.9-liter I-6, the biggest in-line Six available in a full-size van; the 5.0- and 5.8-liter mid-range V-8s; and 7.5-liter V-8, the biggest in a full-size van and offering a maximum towing capacity of 10,000 pounds.

The largest diesel in a full-size cargo van is also Econoline's: the muscular 7.3-liter V-8 diesel.

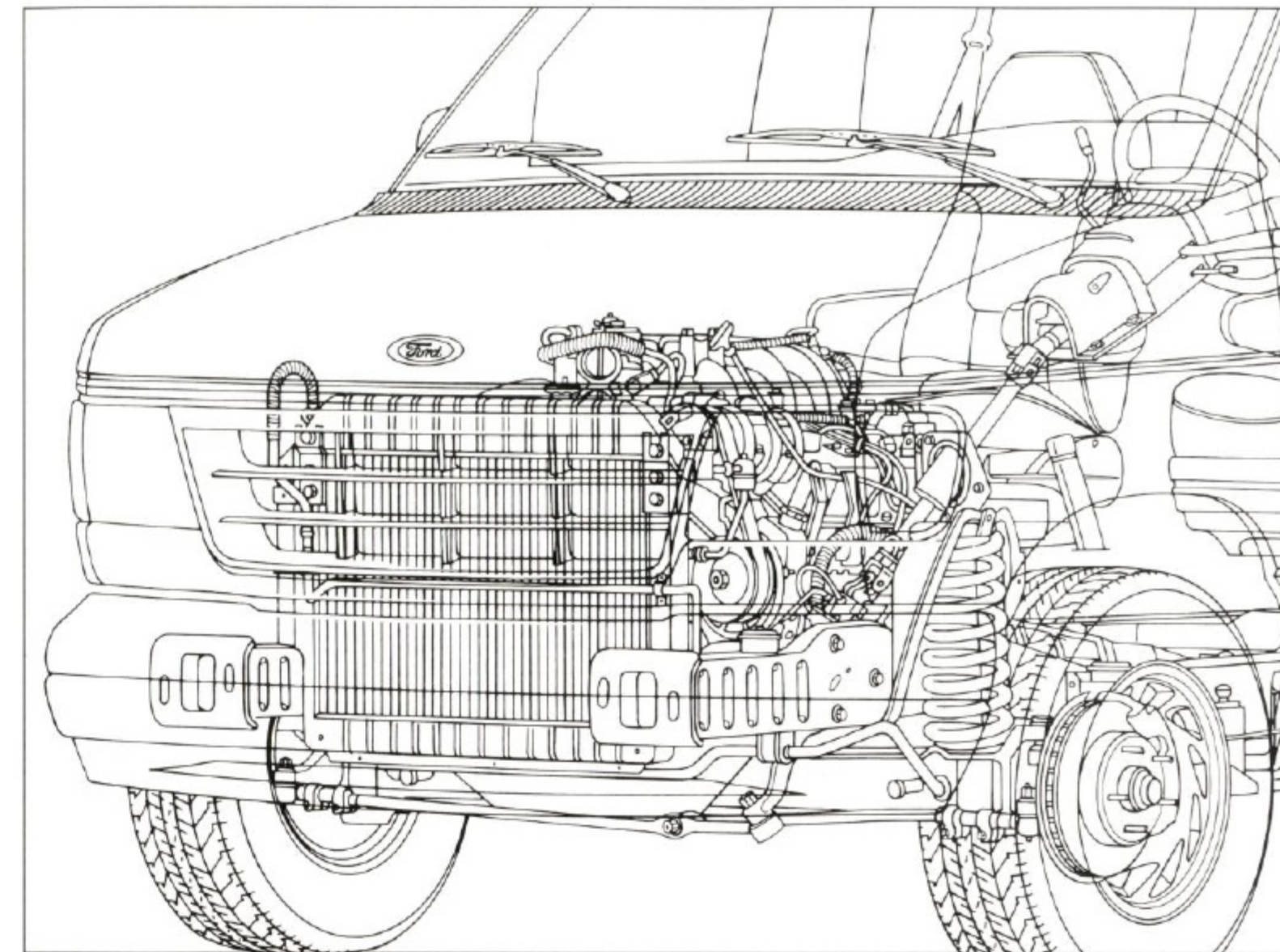
Econoline offers you a big 35-gallon single fuel tank with gas engines. The diesel engine has a 31-gallon tank.

With Econoline you have a wide range of payload ratings, too, from 1,370 lbs. (6,050-lb. GVWR) in the E-150 to 4,195 lbs. (9,400-lb. GVWR) in the E-350. And if you need more cargo volume than the Regular Van's 260.8 cu. ft., the Super Van has 20" more inside length and 299.8 cu. ft.

Performance. Convenience. Safety. Capability. All in all, it's hard to beat today's Ford Econoline full-size van.



Beneath Econoline's modern aero shape is a long tradition of engineering rugged and dependable trucks. And with today's Econoline you have an impressive list of safety features including a driver air bag to supplement your safety belt (in all models except E-350) and an energy-absorbing front end structure, to mention just a few.



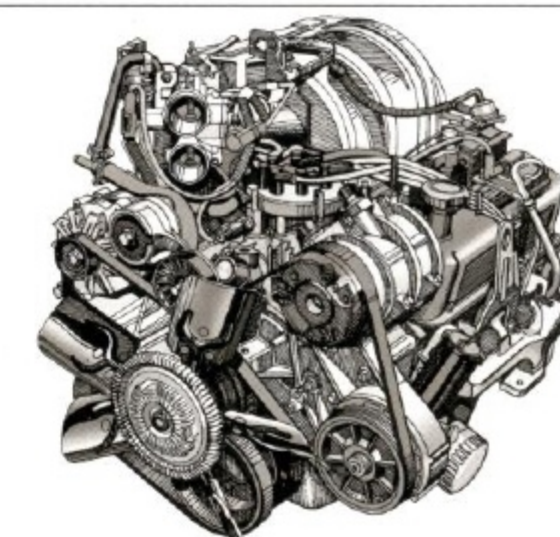
Above left: Commercial-use Econolines have a painted grille and painted steel bumpers, plus halogen headlamps. With the "out-front" design's forward location of the wheelhousings, entering and exiting by the front doors is convenient. Also, 27 key maintenance items are under the hood for easy servicing.

Below left: Over 9" of clearance between the engine cover and the driver's seat makes for easy access to the cargo area. This is yet another benefit of Econoline's exclusive "out-front" design.



Displacement (liters):	4.9
Type/cylinders:	Gasoline/I-6
Fuel injection:	Electronic multi-port
Horsepower:	150 @ 3,400 rpm*
Torque, lbs./ft.:	260 @ 2,000 rpm*

*145 hp @ 3,400 and 265 lbs./ft. torque @ 2,000 on models below 8,500 lbs. GVWR with 4-speed automatic E4OD.



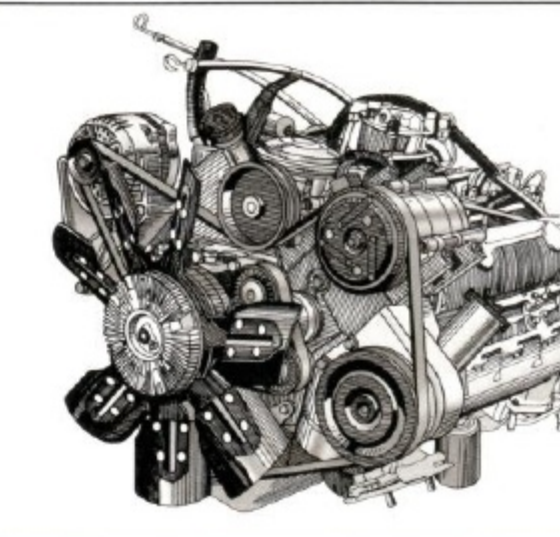
Displacement (liters):	5.0
Type/cylinders:	Gasoline/V-8
Fuel injection:	Electronic multi-port
Horsepower:	195 @ 4,000 rpm
Torque, lbs./ft.:	270 @ 3,000 rpm



Displacement (liters):	5.8
Type/cylinders:	Gasoline/V-8
Fuel injection:	Electronic multi-port
Horsepower:	210 @ 3,600 rpm
Torque, lbs./ft.:	325 @ 2,800 rpm



Displacement (liters):	7.5
Type/cylinders:	Gasoline/V-8
Fuel injection:	Electronic multi-port
Horsepower:	245 @ 4,000 rpm
Torque, lbs./ft.:	400 @ 2,200 rpm



Displacement (liters):	7.3
Type/cylinders:	Diesel/V-8
Fuel injection:	Mechanical
Horsepower:	185 @ 3,000 rpm*
Torque, lbs./ft.:	360 @ 1,400 rpm*

*Altitude ratings are less.

ECONOLINE SPECIFICATIONS/DIMENSIONS

ECONOLINE SPECIFICATIONS

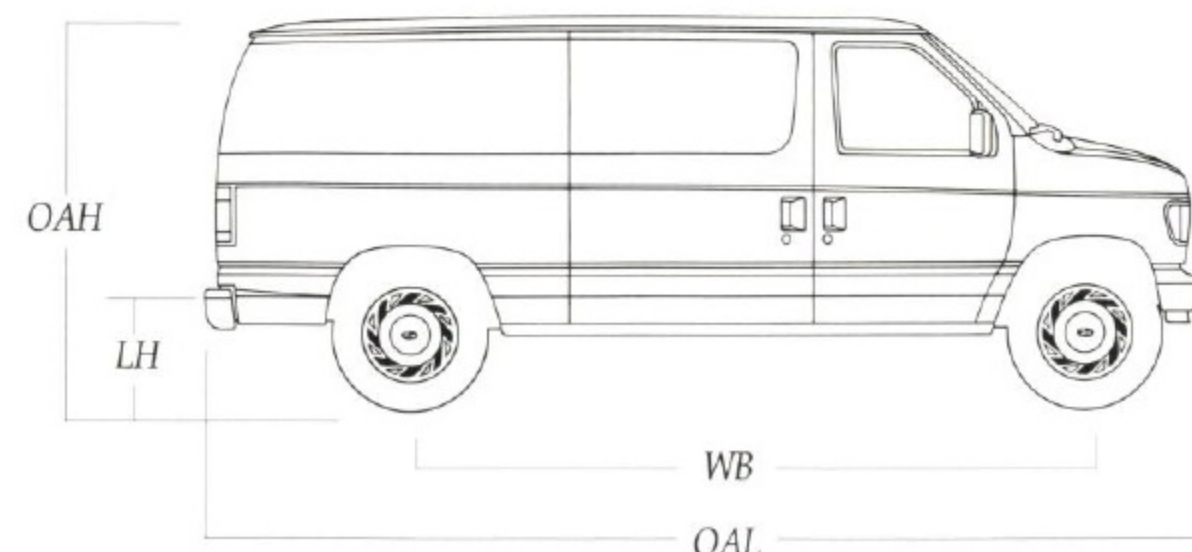
Equipment	E-150	E-250	E-250 HD (1)	E-350
Powerteams	Standard: 4.9L EFI I-6/3-Spd. Auto. Optional: 4.9L EFI I-6/4-Spd. Auto. E4OD 5.0L EFI V-8/4-Spd. Auto. 4R70W 5.8L EFI V-8/4-Spd. Auto. E4OD	4.9L EFI I-6/3-Spd. Auto. (1) 4.9L EFI I-6/4-Spd. Auto. E4OD (2) 5.8L EFI V-8/4-Spd. Auto. E4OD	4.9L EFI I-6/3-Spd. Auto. 4.9L EFI I-6/4-Spd. Auto. E4OD 5.8L EFI V-8/4-Spd. Auto. E4OD	4.9L EFI I-6/3-Spd. Auto. (1) 5.8L EFI V-8/4-Spd. Auto. E4OD (2) 7.5L EFI V-8/4-Spd. Auto. E4OD 7.3L Diesel V-8/4-Spd. Auto. E4OD
Fuel capacity (gal.)	Standard: 35.0	35.0	35.0	35.0 (3)
Electrical:				
Battery (amp-hr.)	Standard: 72 Optional: 84/60	72 84/60	72 84/60	72 (dual 84/63 with 7.3L Diesel) 84/60 (except 7.3L Diesel)
Alternator (amp.)	Standard: 95 Optional: 130	95 130	95 130	95 (130 with 7.3L Diesel) 130 (except 7.3L Diesel)
Steering	Standard: Power	Power	Power	Power
Brakes	Standard: Power/rear anti-lock Optional: 4-wheel anti-lock	Power/rear anti-lock 4-wheel anti-lock	Power/rear anti-lock 4-wheel anti-lock	Power/rear anti-lock 4-wheel anti-lock
Construction	Standard: Body-on-frame	Body-on-frame	Body-on-frame	Body-on-frame
Shock absorbers	Standard: Gas-pressurized Optional: Heavy-duty (4)	Gas-pressurized Heavy-duty (4)	Gas-pressurized Heavy-duty (4)	Gas-pressurized —
Springs (combined rating @ ground) Front coil/rear leaf	Standard: Computer-selected Single-stage 3,180 lbs.	Computer-selected Two-stage 4,265 lbs.	Computer-selected Two-stage 5,345 lbs.	Computer-selected Two-stage 6,195 lbs.
Tires (tubeless)	Standard: P225/75R15SL all-season Optional: Optional tires in sizes to match Payload/GVWR requirements. Use adequate tires for loads and type of service. Consult your Ford Dealer.	LT225/75R16D all-season	LT225/75R16E all-season	LT245/75R16E all-season

4R70W= Electronic Automatic Overdrive, E4OD=Electronic Automatic Overdrive. Note: All batteries are maintenance free except 60 amp-hr. auxiliary, available with gas engines. (1) Not available in California. (2) Standard powerteam in California only. (3) 31-gal. with V-8 diesel. (4) Available in optional handling package, heavy-duty service package and trailer towing package only.

ECONOLINE DIMENSIONS (STANDARD VANS)

Series	WB	OAL	LH Empty	OAH Empty	AH Loaded	Front TW	Rear TW
E-150	138"	211.8"	25.9"	80.7"	6.9"	70.0"	67.0"
E-250	138"	211.8"	29.2"	83.4"	7.6"	70.0"	66.5"
	138" SV	231.8"	29.6"	83.4"	7.6"	70.0"	66.5"
E-250 HD	138"	211.8"	29.4"	83.4"	7.6"	70.0"	66.5"
	138" SV	231.8"	29.4"	83.4"	7.6"	70.0"	66.5"
E-350	138"	211.8"	31.8"	84.1"	8.1"	70.0"	66.5"
	138" SV	231.8"	32.0"	84.1"	8.1"	70.0"	66.5"

SV = Super Van **HD** = Heavy-duty
WB = Wheelbase **OAL** = Overall length
LH = Load height **OAH** = Overall height
AH = Axle height **TW** = Tread width



Super Van has a 299.8-cu. ft. cargo capacity (with 60/40 side doors shown). It's available in the E-250 and E-350 models.



The optional sliding side door shown (not available with Super Van) is easy to open and close and is ideal when you're working in tight spaces. The rear cargo doors are designed to stay open and out of the way when you're loading or unloading.

PAYLOAD PACKAGE SELECTOR

Series	Wheelbase	Payload	GVWR*	Tires
E-150 Regular Van	138"	1,370 lbs.	6,050 lbs.	P225/75R15SL
	138"	1,980 lbs.	6,700 lbs.	P235/75R15XL**
	138"	2,030 lbs.	7,000 lbs. (1)	P235/75R15XL**
E-250 Regular Van	138"	2,130 lbs.	7,200 lbs.	LT225/75R16D
	138"	2,210 lbs.	7,500 lbs. (1)	LT225/75R16D
E-250 HD Regular Van	138"	3,455 lbs.	8,550 lbs. (2)	LT225/75R16E
E-250 Super Van	138"	2,060 lbs.	7,500 lbs. (1)	LT225/75R16D
	138"	2,000 lbs.	7,300 lbs.	LT225/75R16D
E-250 HD Super Van	138"	3,265 lbs.	8,550 lbs. (3)	LT225/75R16E
E-350 Regular Van	138"	4,195 lbs.	9,400 lbs. (4)	LT245/75R16E
E-350 Super Van	138"	3,925 lbs.	9,300 lbs. (5)	LT245/75R16E

*Maximum allowable weight of people, cargo, and equipment. **Required at extra cost. (1) RV only. (2) California uses 8,450 GVWR with 3,350 payload. (3) California uses 8,450 GVWR with 3,210 payload. (4) 9,500 GVWR with 4,090 payload with V-8 engine. (5) 9,400 GVWR with 3,825 payload with V-8 engine.

CARGO AREA DIMENSIONS

	Wheelbase	Max. Length*	Height	Width*	Cargo Volume
Regular Van (sliding door)	138"	120.7"	53.2"	75.0"	260.8 cu. ft.
Super Van (hinged door)	138"	140.7"	53.2"	75.0"	299.8 cu. ft.

*Measured at floor.

TODAY'S CLUB WAGON: THE BEST FORD PASSENGER VAN EVER.

Club Wagon, the largest vehicle we build for passenger travel, provides comfortable roominess for people and plenty of space for cargo. Plus smooth performance and riding comfort.

You will find a great deal to choose from in the complete line of Club Wagons. There are three models (Regular Wagon, HD Regular Wagon, and Super Wagon) offering a range of seating arrangements and power teams.

Start with the Regular Club Wagon model with standard 8-passenger seating. It was the first full-size passenger van equipped with a driver air bag to supplement your lap/shoulder belt.

Move up to the higher-capacity HD Regular Wagon with standard seating for twelve. With the HD Regular Wagon you also have the option of the 7.5-liter multi-port EFI gas V-8 or the 7.3-liter Diesel V-8 if you need additional power for an application like extra heavy-duty trailer towing.

Then comes the Super Wagon, a full-size van that lives up to its name. It provides all the comfort and performance of the HD Regular Wagon. Plus 20 more inches of inside length and standard seating for fifteen (or optional twelve). Super Wagon is ideal for van pooling or shuttle bus service.

From its contemporary aerodynamic shape to its ergonomic and spacious interior, today's Club Wagon is built to design standards that are the highest ever established for a Ford full-size van. And it comes equipped with many safety features as well.

So you have every reason to choose Ford Club Wagon to meet your needs in a full-size passenger van:

- Safety features including a driver air bag to supplement the safety belts (Regular Wagon model only), 3-point rear outboard safety belts, an energy-absorbing front end structure, and a rear high-mount stop lamp.

- A new standard computer-controlled 4-wheel anti-lock brake system.

- Aerodynamics for reduced wind resistance and enhanced quietness.

- Ergonomic instruments and controls, high-back reclining front seats (XL model), and captain's chairs with available 6-way power driver seat adjustment (XLT).

- Seating capacities from seven passengers in Regular Wagon to fifteen passengers in Super Wagon.

- Exclusive "out-front" design: The forward location of the wheelhousings for convenient front door entry and exit. The forward location of the engine housing providing comfortable leg

room and convenient access for the driver to the rear seating compartment. Convenient servicing as well, with 27 key service items within easy reach under the hood.

- "Quick-release" rear bench seats when you need more space for cargo. A rear step bumper is optional (see your dealer for availability).

- Versatile 60/40 side doors, standard; or easy-to-use sliding side door (not available with Super Wagon).

- The strength of body-on-frame construction, an exclusive Ford feature.

- Gas engines with multi-port EFI for precise fuel metering, easy starting, and excellent throttle response.

- A 35-gallon fuel tank with all gas engines; a 31-gallon tank is included with the V-8 Diesel.

- Twin-I-Beam independent front suspension with adjustable caster and camber for excellent ride and handling.

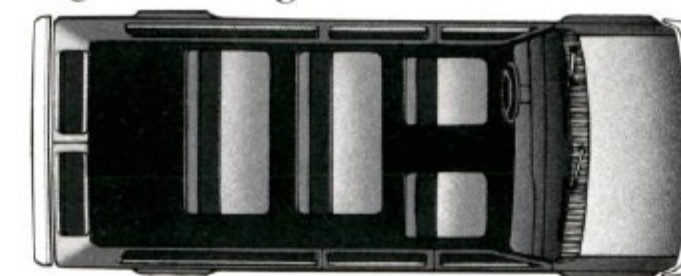
For more information, obtain a copy of the 1994 Ford Club Wagon catalog available at your nearest Ford Dealer.



At right: Super Club Wagon XLT. An ideal passenger vehicle for van pooling or shuttle bus service. Its standard 15-passenger seating arrangement includes dual front captain's chairs, three 3-passenger bench seats, and a 4-passenger bench seat. Power windows and locks, illuminated entry, AM/FM stereo radio with six speakers and sport wheel covers are also among the features that are included with the XLT trim level. There's also the well-equipped Super Club Wagon XL (above), which includes 15-passenger seating and such items as a full-length color-keyed cloth headliner, tinted glass and interval wipers.

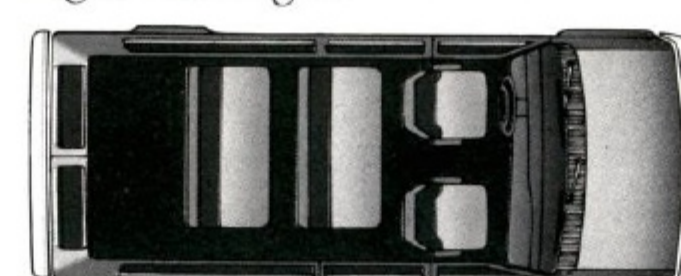
REGULAR WAGON SEATING

Eight Passengers



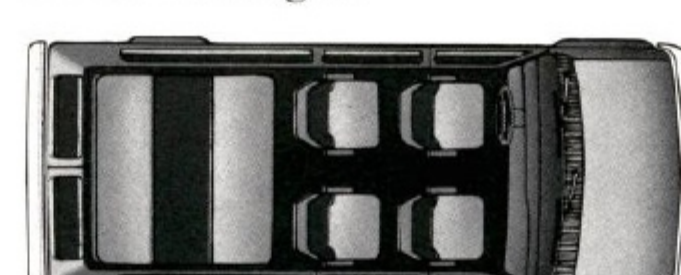
Bucket seats; two 3-passenger bench seats (std. in XL)

Eight Passengers



Captain's chairs; two 3-passenger bench seats (std. in XLT)

Seven Passengers



Quad captain's chairs; combination seat/bed (opt. in XLT)

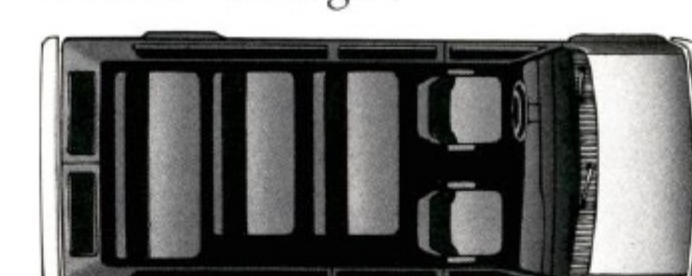
HD REGULAR WAGON SEATING

Twelve Passengers



Bucket seats; two 3-passenger bench seats; 4-passenger bench seat (std. in XL)

Twelve Passengers



Captain's chairs; two 3-passenger bench seats; 4-passenger bench seat (std. in XLT)

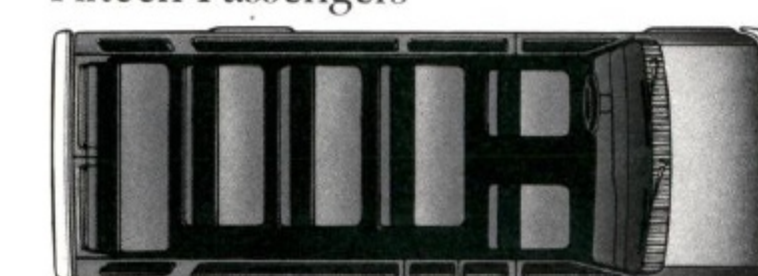
Seven Passengers



Quad captain's chairs; combination seat/bed (opt. in XLT)

SUPER WAGON SEATING

Fifteen Passengers



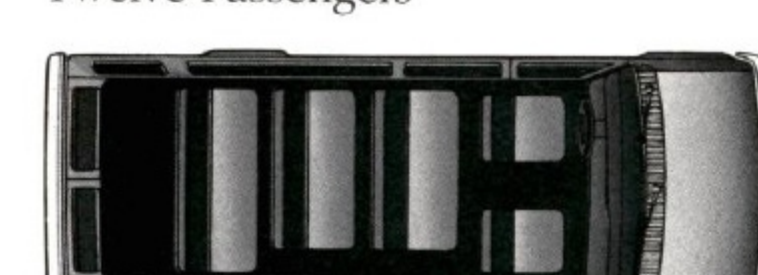
Bucket seats; three 3-passenger bench seats; 4-passenger bench seat (std. in XL)

Fifteen Passengers



Captain's chairs; three 3-passenger bench seats; 4-passenger bench seat (std. in XLT)

Twelve Passengers



Bucket seats; two 3-passenger bench seats; 4-passenger bench seat (opt. in XL)



1994 AEROSTAR. A MINIVAN WITH A BIG-JOB APPETITE.

Aerostar is a compact cargo van engineered to operate efficiently* and built tough to work hard.

Aerostar delivers plenty of V-6 power. And it maneuvers easily into and out of tight places, an advantage especially for city delivery applications.

The seating and instrumentation are designed to make the job of driving easier. Which can mean greater driver efficiency and productivity.

And Aerostar carries hefty payloads. In fact, the regular-length 2WD model's maximum 1,950-lb. rating is almost 600 lbs. more than payload package #1 for a full-size Econoline E-150.

What's more, Aerostar's fuel efficiency* and 21-gal. fuel tank can help you go a long time between fill-ups.

Aerostar Van is available in your choice of cargo or window van style. Both come in regular- or extended-length model and are available in 2-wheel drive or optional electronic 4-wheel drive (E-4WD).

The 4WD Aerostar, not an off-road vehicle in the strict "utility" sense, is engineered to help you maintain control, on a paved or unpaved road, in wet or dry weather. And the system operates "full time" without your having to touch a single switch. It's all done automatically.

When wheel slippage is detected, the computer locks the slipping wheel(s) to the other driveshaft (front or rear) with non-slipping wheels for a few seconds. This anti-slip action is repeated as often as necessary to provide normal 4WD traction.



Aerostar Van comes with standard dual rear doors (shown). An optional rear liftgate door is available. Cargo volume is 141.4 cu. ft. (regular-length model) or 172.5 cu. ft. (extended-length model).

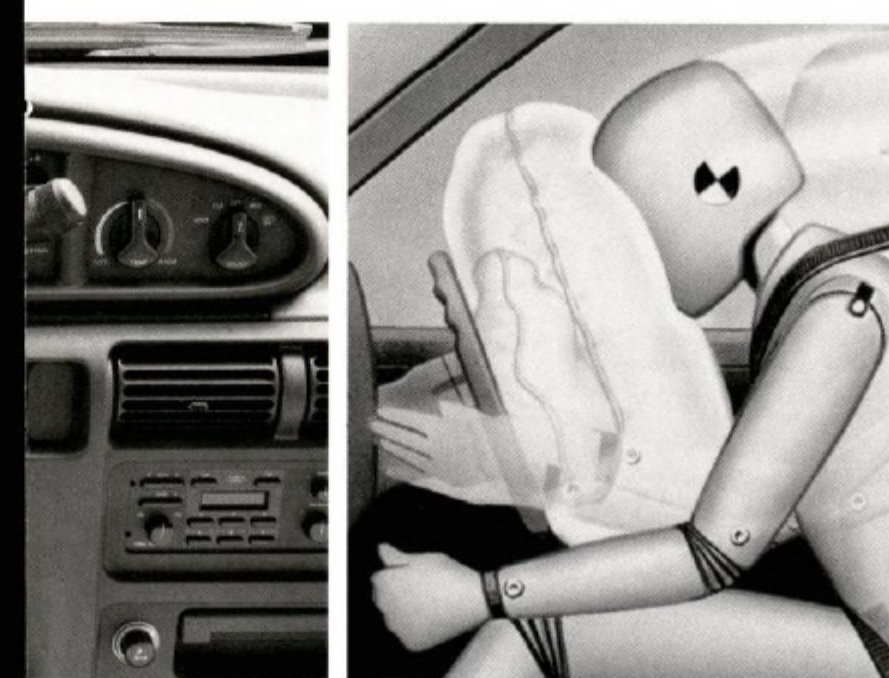


Other notable safety, convenience and performance features:

- ☐ A driver air bag to supplement the safety belts.
- ☐ Rear-wheel anti-lock brakes.
- ☐ Rear high-mount stop lamp.
- ☐ Standard 3.0-liter multi-port electronically fuel-injected (EFI) V-6.
- ☐ Optional 4.0-liter multi-port EFI V-6 for extended-length 2WD model (included with 4WD models).
- ☐ Standard 5-speed manual overdrive transmission.
- ☐ Optional 4-speed automatic overdrive transmission (standard with 4WD models); includes brake-shift interlock feature that's designed to prevent shifting out of "P" (Park) position if brake pedal is not depressed.
- ☐ Up to 4,900-pound towing capability when properly equipped (see page 18 for towing information).

*EPA economy ratings were unavailable at press time.

Aerostar Van comes in regular-length (shown above) or extended-length model, cargo van (shown) or window van body style, in 2-wheel drive or 4-wheel drive. It's powered by a 3.0L or 4.0L V-6 with manual overdrive or automatic overdrive transmission. Dual bucket seats (at right) are standard; dual captain's chairs are optional.



AEROSTAR SPECIFICATIONS/DIMENSIONS

AEROSTAR SPECIFICATIONS

Engines	3.0 liter V-6, multi-port electronic fuel injection standard; 4.0 liter V-6 optional with extended-length models and included with 4VWD
Horsepower (SAE net)	3.0-liter V-6: 135 @ 4,600 rpm 4.0-liter V-6: 155 @ 4,000 rpm
Torque, lbs./ft. (SAE net)	3.0-liter V-6: 160 @ 2,800 rpm 4.0-liter V-6: 230 @ 2,400 rpm
Transmissions	5-speed manual overdrive standard; 4-speed automatic overdrive optional with 3.0 liter V-6; Heavy-duty 4-speed automatic overdrive standard with 4.0 liter V-6
Clutch linkage	Hydraulic self-adjusting
Fuel tank	21 gallons
Battery	72 amp-hr., maintenance free
Alternator	95 amp
Steering	Power rack-and-pinion system, no-lube linkage
Front suspension	Independent "short/long arm" (SLA) design; springs computer-selected to match GVWR
Rear suspension	Semifloating coil-link design; variable-rate tapered coil springs
Shock absorbers	Twin-tube nitrogen gas pressurized
Tires	P215/70R14SL steel-belted radials, all-season tread design (WSW optional)
Wheels	5.5" J, 5-hole; 6.0" J, 5-hole for 2WD extended-length model (forged aluminum optional)

AEROSTAR DIMENSIONS

Exterior	Regular Length	Extended Length
Overall length	174.9"	190.3"
Overall width	71.7"	72.0"
Overall height (2WD/4WD)	72.9"/73.6"	74.0"/74.0"
Wheelbase	118.9"	118.9"
Front tread	61.5"	61.5"
Rear tread	60.0"	60.0"
Front Compartment		
Head room	39.5"	39.5"
Leg room	41.4"	41.4"
Rear Compartment		
Cargo length at floor	86.0"	101.3"
Cargo width at floor	65.5"	65.5"
Cargo width at wheelhouse	48.2"	48.2"
Maximum cargo height	48.1"	49.0"
Cargo floor to ground (2WD/4WD) empty	24.9"/26.0"	25.0"/26.3"
Cargo volume (cubic feet)	141.4	172.5

AEROSTAR PAYLOAD PACKAGE SELECTOR

Regular Length	Payload*	GVWR	Tires
2WD	1,600 lbs.	4,920 lbs.	—
2WD	1,950 lbs.	5,300 lbs.	P215/75R14SL**
4VWD	1,700 lbs.	5,340 lbs.	—
Extended Length			
2WD	1,600 lbs.	5,020 lbs.	—
2WD	1,870 lbs.	5,300 lbs.	P215/75R14SL**
4VWD	1,650 lbs.	5,340 lbs.	—

*Maximum allowable weight of people, cargo and equipment. **Required at extra cost.



Cutaways come with the finished front end and interior of the Econoline Van. You customize the rear portion. They're available for completion for commercial and recreational uses.

Only Econoline cutaways have rugged body-on-frame construction and adjustable Twin-I-Beam independent front suspension system.

Both Commercial and RV Cutaways come in either single rear-wheel model (for lighter-duty applications) or dual rear-wheel model.

The RV Cutaway is available in standard or XL trim levels or as a special RV package.



And there are the following packages available to help prepare your vehicle for specialized applications.

HEAVY-DUTY SERVICE PACKAGE

Available on E-350 Commercial and RV Cutaways, the package includes:

- ☐ Super engine cooling (standard with 7.3-liter and 7.5-liter engines, included with air conditioning).
- ☐ Dual electric horns.
- ☐ Heavy-duty alternator.

AMBULANCE PREP PACKAGE*

Available with the E-350 RV Cutaway, the Ambulance Prep Package includes:

- ☐ Auxiliary heater/air conditioning connector package.
- ☐ 4.10 limited-slip axle ratio.
- ☐ 165-amp. alternator.
- ☐ 4,600-lb front GAWR.
- ☐ Front air conditioning.
- ☐ Dual electric horns.
- ☐ Bright swing-out recreational mirrors.
- ☐ 7.3-liter diesel engine required.

SCHOOL BUS BODY BUILDER PREP PACKAGE*

Available with the E-350 Commercial Cutaway (138" wheelbase with 9,600- or 10,000-lb GVWR), the School Bus Body Builder Prep Package includes:

- ☐ Dual electric horns.
- ☐ Banded front door main glass (tinted/laminated).
- ☐ Right-hand seat not included.

**Incomplete vehicle package — requires further manufacture and certification by a final-stage manufacturer. Ford vehicles are suitable for completion as ambulances only if equipped with the Ford Ambulance Preparation Package. In addition, Ford urges ambulance manufacturers to follow the recommendations of the Ford Incomplete Vehicle Manual and the Ford Truck Body Builders Layout Book (and pertinent supplements). Using a Ford vehicle without the Ford Ambulance Preparation Package to produce an ambulance voids the Ford Warranty.*

Above: The Econoline E-350 Commercial Cutaway features dual rear wheels and a payload capacity up to 5,935 lbs. (10,700-lb. GVWR).

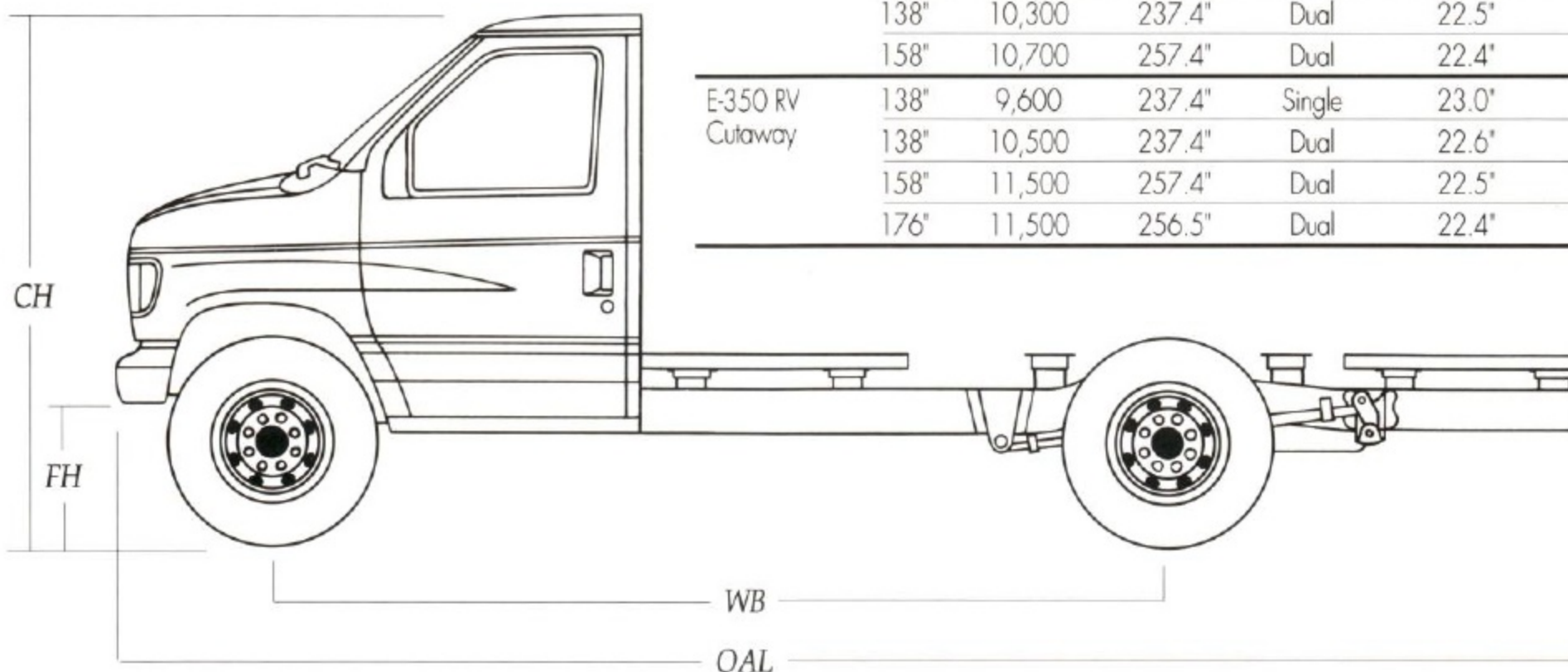
ECONOLINE CUTAWAY SPECIFICATIONS

Series	Commercial E-350 SRW/DRW		RV E-350 SRW/DRW	
	138 (1)	138/158 (2)	138	138/158/176
Wheelbases (in.)				
GVWRs (lb.)	9,600 SRW/10,000 DRW	10,300/10,700 DRW	9,600 SRW	10,500/11,500/11,500 DRW
Payloads (lb.)	4,355/4,815	5,570/5,935	4,415	5,605/6,560/6,550
Axles (lb.)	Front:	4,600	4,600	4,600
	Rear:	7,800	7,800	7,800/8,000/8,000
Springs—Minimum	Front:	3,800/3,900	3,900	3,550/4,050/4,050
	Rear:	7,810	7,810	7,810/7,810/7,810
(comb. rating @ ground)				
Steering	Power	Power	Power	Power
Brakes	Standard:	Power/rear anti-lock	Power/rear anti-lock	Power/rear anti-lock
	Optional:	4-wheel anti-lock	4-wheel anti-lock	4-wheel anti-lock
Electrical:				
Batteries (amp-hr.)	Standard:	84/63 Dual	84/63 Dual	72 (84/63 Dual with diesel)
	Optional:	—	—	84/60 Dual with gas engines
Alternators (amp.)	Standard:	130	130	95 (130 with diesel)
	Optional:	—	—	130 with gas engines
Engines	Standard:	7.3L V-8 Diesel	7.3L V-8 Diesel	5.8L EFI V-8 (7.5L with 176" wb)
	Optional:	—	—	7.3L V-8 Diesel
		7.5L EFI V-8		7.5L EFI V-8
Transmissions	Standard:	Electronic 4-spd. automatic OD	Electronic 4-spd. automatic OD	Electronic 4-spd. automatic OD
	Optional:	3-spd. automatic (3)	—	3-spd. automatic (3)
Fuel tanks (gal.)	Standard:	35.0	35.0	35.0
	Optional:	—	—	55.0 with 158" and 176" wb
Tires	Standard:	LT245/75R16E (SRW) LT225/75R16D (DRW)	LT245/75R16E	LT225/75R16D
	Optional:	Optional tire sizes available to match Payload/GVWR requirements. Use adequate tires for loads and type of service. Consult your Ford Dealer.		
Wheels (number)	Four 8-hole disc 16"x7"K (SRW)	Six 8-hole disc 16"x6"K	Four 8-hole disc 16"x7"K	Six 8-hole disc 16"x6"K
Type/rim size	Six 8-hole disc 16"x6"K (DRW)			

SRW = Single Rear Wheels. DRW = Dual Rear Wheels. Note: Load rating represents maximum allowable weight of people, cargo and body equipment, and is reduced by weight of optional equipment. (1) Includes School Bus Body Builder Prep Package. 9,600-lb. GVWR may also be completed as a truck. Refer to the Ford Incomplete Vehicle Manual for compliance representations. (2) 10,300- and 10,700-lb GVWRs are not available with School Bus Body Builder Prep Package. (3) Available on 158" wheelbase models with 7.3L V-8 diesel only.

ECONOLINE CUTAWAY DIMENSIONS

Series	WB	GVWR	OAL	Rear Wheels	FH Empty	FH Loaded	CH Empty	CH Loaded
E-350 Comm. Cutaway	138"	9,600	237.4"	Single	23.0"	20.7"	80.5"	78.0"
	138"	10,000	237.4"	Dual	21.8"	20.2"	80.0"	77.5"
	138"	10,300	237.4"	Dual	22.5"	20.2"	83.0"	79.5"
	158"	10,700	257.4"	Dual	22.4"	20.2"	83.0"	79.5"
E-350 RV Cutaway	138"	9,600	237.4"	Single	23.0"	20.7"	82.3"	80.0"
	138"	10,500	237.4"	Dual	22.6"	20.2"	81.8"	79.5"
	158"	11,500	257.4"	Dual	22.5"	20.2"	82.5"	79.5"
	176"	11,500	256.5"	Dual	22.4"	20.2"	82.8"	79.5"



WB = Wheelbase
GVWR = Gross Vehicle
Weight Rating
OAL = Overall length
FH = Frame height
CH = Cab height

FORD ECONOLINE AND F-SUPER DUTY STRIPPED CHASSIS

ECONOLINE

The Econoline Stripped Chassis — for commercial or RV application — comes without the body, driver's compartment and front end sheet metal, allowing you to add an aftermarket body of your choice.

The Commercial Stripped Chassis is offered in single or dual rear wheels; the RV Stripped Chassis in dual rear wheels.

The Commercial Stripped Chassis is powered by the standard 4.9L EFI I-6. The 5.8L V-8 is optional.

The RV Stripped Chassis is driven by the big 7.5L V-8.

F-SUPER DUTY

The F-Super Duty Stripped Chassis is available for commercial and Class A motorhome applications.

The 16,000-lb. GVWR Commercial Stripped Chassis is offered in two wheelbases: 158" and 178". It's powered by a standard 7.3L Diesel. 4-wheel disc brakes make it ideal for multi-stop delivery applications.

The 17,000-lb. GVWR Motorhome Stripped Chassis comes in 178", 190", 208" and 228" wheelbases. It's powered by a 7.5L V-8 with the E4OD transmission.

ECONOLINE STRIPPED CHASSIS SPECIFICATIONS

Series	Commercial E-350 SRW/DRW	RV E-350 DRW
GVWR range (lb.)	9,400/10,000	11,500
Payload Range (lb.)	5,610/6,065	7,145/7,185
Axles (lb.)	Front: 4,600 Rear: 6,340 (SRW), 7,800 (DRW)	4,600 8,000
Springs (combined rating @ ground)	Front: 3,550 Rear: 7,810	4,200 7,810
Steering	Power	Power
Brakes	Power w/rear antilock	Power w/4-wheel antilock
Battery (amp-hr.)	72	72
Alternator (amp.)	95	130
Engines	Standard: 4.9L EFI I-6* Optional: 5.8L EFI V-8	7.5L EFI V-8
Transmissions	Standard: 3-speed automatic Optional: 4-speed automatic E4OD	4-speed automatic E4OD
Fuel tank (gal.)	35.0	55.0
Tires	LT245/75R16E (SRW) LT225/75R16D (DRW)	LT225/75R16D
Wheels (number)	Four 8-hole disc 16"x7"K (SRW)	Seven 8-hole disc 16"x6"K
Type/rim size	Six 8-hole disc 16"x6"K (DRW)	

Note: Load rating represents maximum allowable weight of people, cargo and body equipment, and is reduced by weight of optional equipment. *Not available in California.

ECONOLINE DIMENSIONS

E-350	WB	OAL	Rear Wheels	FH Loaded
Commercial/RV	138"	235.5"	Single	22.0"
Stripped	138"	235.5"	Dual	22.4"
Chassis	158"	255.5"	Single	20.9"
	158"	255.5"	Dual	20.5"
	176"	255.5"	Dual	21.9"
	158"	250.4"	Dual	21.9"
	176"	250.4"	Dual	21.9"

*RV Stripped Chassis. WB=Wheelbase. OAL=Overall Length. FH=Frame Height at rear axle.

F-SERIES DIMENSIONS

F-Super Duty 4x2	WB	OAL	RAF Length	FH (Empty/Loaded)	AH (Loaded)	TW (Front/Rear)
Commercial	158"	263.3"	70.0"	32.2/26.6"	7.61"	71.7/71.7"
Stripped Chassis	178"	283.3"	70.0"	32.2/26.6"	7.61"	71.7/71.7"
Motorhome	178"	320.3"	105.8"	35.0/28.0"	7.61"	71.7/71.7"
Stripped Chassis	190"	332.3"	105.8"	35.0/28.0"	7.61"	71.7/71.7"
	208"	350.3"	105.8"	35.0/28.0"	7.61"	71.7/71.7"
	228"	370.3"	105.8"	35.0/28.0"	7.61"	71.7/71.7"

WB=Wheelbase. OAL=Overall Length. RAF=Rear Axle Frame. FH=Frame Height at rear axle. AH=Axle Height. TW=Tread Width.



The bread truck shown here is an example of what you can build when you start with a quality Ford Stripped Chassis.

F-SERIES STRIPPED CHASSIS SPECIFICATIONS

Series	Commercial Stripped 4x2 DRW	Motorhome Stripped 4x2 DRW
Wheelbase (in.)	158/178	178/190/208/228
GVWR (lb.)	16,000	17,000
Payload (lb.)	10,300/10,235	11,170/11,050/11,025/10,945
Axles (lb.)	Front: 6,000 monobeam Rear: 11,000	6,000 monobeam 11,000
Springs (combined rating @ ground)	Front: 6,000 Rear: 11,000	6,000 11,000
Steering and Brakes	Power	Power
Battery (amp-hr.)	Dual 84 (maintenance-free)	72 (maintenance-free)
Alternator (amp.)	130	130
Engine	7.3L V-8 Diesel	7.5L EFI V-8
Transmission	Standard: HD 5-spd. manual OD Optional: 4-spd. automatic E4OD	4-spd. automatic E4OD
Fuel tank (gal.)	40 single	75 single
Tires (all season)	Six LT235/85R16E	Six LT235/85R16E
Wheels (type/rim size)	Seven 10-hole disc, 16"x6"K	Seven 10-hole disc, 16"x6"K

The F-Super Duty Commercial Stripped Chassis is detailed here. Rugged engineering features include:

- 1 The frame side rails are straight. And the top of the frame is smooth and rivet-free for convenient body installation.
- 2 The rugged monobeam front axle is of forged steel construction.
- 3 #2 and #3 crossmembers bolt in and out for transmission and engine servicing.
- 4 Crossmembers are single-piece stampings, not riveted assemblies.
- 5 Tapered leaf springs are extra long and wide for toughness and comfort. Rated capacity is 6,000 lbs.
- 6 Brake lines, fuel lines and wiring are mounted between the frame rails for protection.
- 7 Rear leaf springs are 64 inches long for ride comfort. Rated capacity is 11,000 lbs.
- 8 Spring mounting brackets are cast steel, not stamped steel. The rear spring front mounting bracket has a bolted, double crossmember for strength.
- 9 Heavy-duty shock absorbers are nitrogen gas-pressurized for ride comfort and control.
- 10 Large-diameter front and rear stabilizer bars contribute to ride control.
- 11 16-inch metric radial tires contribute to fuel efficiency by reducing rolling resistance.



ECONOLINE AND AEROSTAR TRAILER TOWING

You'll find here the basic information for towing with Econoline and Aerostar Vans. For more information, see the 1994 Recreation Vehicle and Towing Guide.

TRAILER CLASSES AND HITCHES

Class I Light Duty: □ 2,000-lb. gross trailer weight (trailer and cargo) □ Load-carrying (non-equalizing) hitch (step bumper* or frame-mounted or contour bumper clamp-type hitch [Econoline]; body-mounted hitch [Aerostar]).

Class II Medium Duty: □ 2,001 to 3,500-lb. gross trailer weight □ Load-equalizing hitch required (step bumper* or frame-mounted with Econoline; body-mounted with Aerostar).

Class III Heavy-Duty: □ 3,501 to 5,000-lb. gross trailer weight □ Load-equalizing hitch required (step bumper* or frame-mounted with Econoline; body-mounted with Aerostar).

Class IV Extra Heavy-Duty: □ 5,001 to 10,000-lb. gross trailer weight □ Load-equalizing hitch required (frame-mounted with Econoline).

REQUIRED EQUIPMENT

For Aerostar towing over 2,000 lbs.: None. See powertrain requirements below.

For Econoline E-150/250/250HD Standard or XL Van towing 2,000 to 3,500 lbs. (with 4.9-liter, 5.0-liter and 5.8-liter engines): HD Service Package or air conditioning or Towing Package.

For Econoline E-150/250/250HD Standard or XL Van towing over 3,500 lbs.: Air conditioning with Handling Package or Heavy-Duty Service Package or Towing Package.

For Regular XL Club Wagon towing 2,000 to 3,500 lbs. (with 4.9-liter, 5.0-liter and 5.8-liter engines): Air conditioning or Towing Package.

TRAILER TOWING PACKAGES

Aerostar: □ Class I wiring harness □ HD turn signal flasher □ Limited-slip axle/ratio upgrade.

Econoline Class I: □ Super engine cooling □ Trailer wiring harness □ Handling package: front stabilizer bar; HD shock absorbers (standard on Econoline E-350, HD Regular and Super Club Wagon) □ Dual electric horns (standard on Club Wagon).

Econoline Class II, III, IV: □ Class I Towing Package features □ Electric brake controller tap-in capability □ Pollak-type trailer plugs (bumper mounted) □ Relay system for back-up/B+/running lights □ HD alternator.

*See your dealer for availability.

ECONOLINE/WAGON MAXIMUM TRAILER WEIGHTS — AUTOMATIC TRANSMISSION

Engine	Axle Ratio	GCWR Max.	Regular Van			Super Van			Club Wagon		
			E-150	E-250	E-350	E-250	E-250	E-350	Regular	HD Regular	Super Wagon
4.9L EFI I6	2.73	(1)	(1)	—	—	—	—	—	—	—	—
	3.08	9,000	3,800	—	—	—	—	—	3,600	—	—
	3.31	9,500	4,300	—	—	—	—	—	4,100	—	—
	3.54	10,000	—	4,700	4,700	—	4,600	4,600	—	—	—
	3.55	10,000	4,800	—	—	—	—	—	4,600	—	—
	3.73	10,500	—	5,200	5,100	5,100	5,000	5,000	4,900	4,700	4,400
5.0L EFI V8	3.31	11,500	6,200	—	—	—	—	—	6,100	—	—
5.8L EFI V8	3.55	12,000	6,600	—	—	—	—	—	6,400	—	—
	3.54	11,500	—	—	—	5,900	—	5,700	—	5,400	5,100
	3.73	13,000	—	7,500	7,500	—	7,400	7,300	—	—	—
	4.09	13,000	—	—	—	7,400	—	7,200	—	6,900	6,600
7.3L V8	3.54	12,000	—	—	—	6,000	—	5,800	—	5,500	5,200
Diesel	4.09	14,000	—	—	—	8,000	—	7,800	—	7,500	7,200
	3.54	15,000	—	—	—	9,200	—	9,100	—	8,800	8,500
7.5L EFI V8	4.09	18,500	—	—	—	10,000	—	10,000	—	10,000	10,000

(1) Not available for trailer towing. Note: Engine/axle ratio combinations may not be available in all areas. See your dealer for availability information. All maximum trailer weights shown must be reduced by passenger and cargo weight in the towing vehicle. Maximum trailer weights shown. The combined weight of the towing vehicle (including hitch, passengers and cargo) and the loaded trailer must not exceed the Gross Combined Weight Rating (GCWR).

AEROSTAR MAXIMUM TRAILER WEIGHTS — AUTOMATIC TRANSMISSION

Engine	Axle Ratio	GCWR Max.	Regular-Length Aerostar				Extended-Length Aerostar			
			Van		Wagon		Van		Wagon	
			2WD	4WD	2WD	4WD	2WD	4WD	2WD	4WD
3.0L EFI V6	3.45	7,000	3,400	—	—	—	3,300	—	—	—
	3.73	7,500	3,900	—	3,800	—	3,800	—	3,700	—
	4.10	8,500	4,900	—	4,800	—	4,800	—	4,700	—
4.0L EFI V6	3.27	7,500	—	—	—	—	3,800	—	3,600	—
	3.55	8,500	—	—	—	—	4,800	—	4,600	—
	3.73	8,500	—	4,700	—	4,500	—	4,600	—	4,400

AEROSTAR MAXIMUM TRAILER WEIGHTS — MANUAL TRANSMISSION

Engine	Axle Ratio	GCWR Max.	Van	Wagon
3.0L EFI V6	3.45	5,000	1,500	—
	3.73	6,000	2,500	2,300

Note: Engine/axle ratio combinations may not be available in all areas. See your dealer for availability information. All maximum trailer weights shown must be reduced by passenger and cargo weight in the towing vehicle. Maximum trailer weights shown. The combined weight of the towing vehicle (including hitch, passengers and cargo) and the loaded trailer must not exceed the Gross Combined Weight Rating (GCWR).



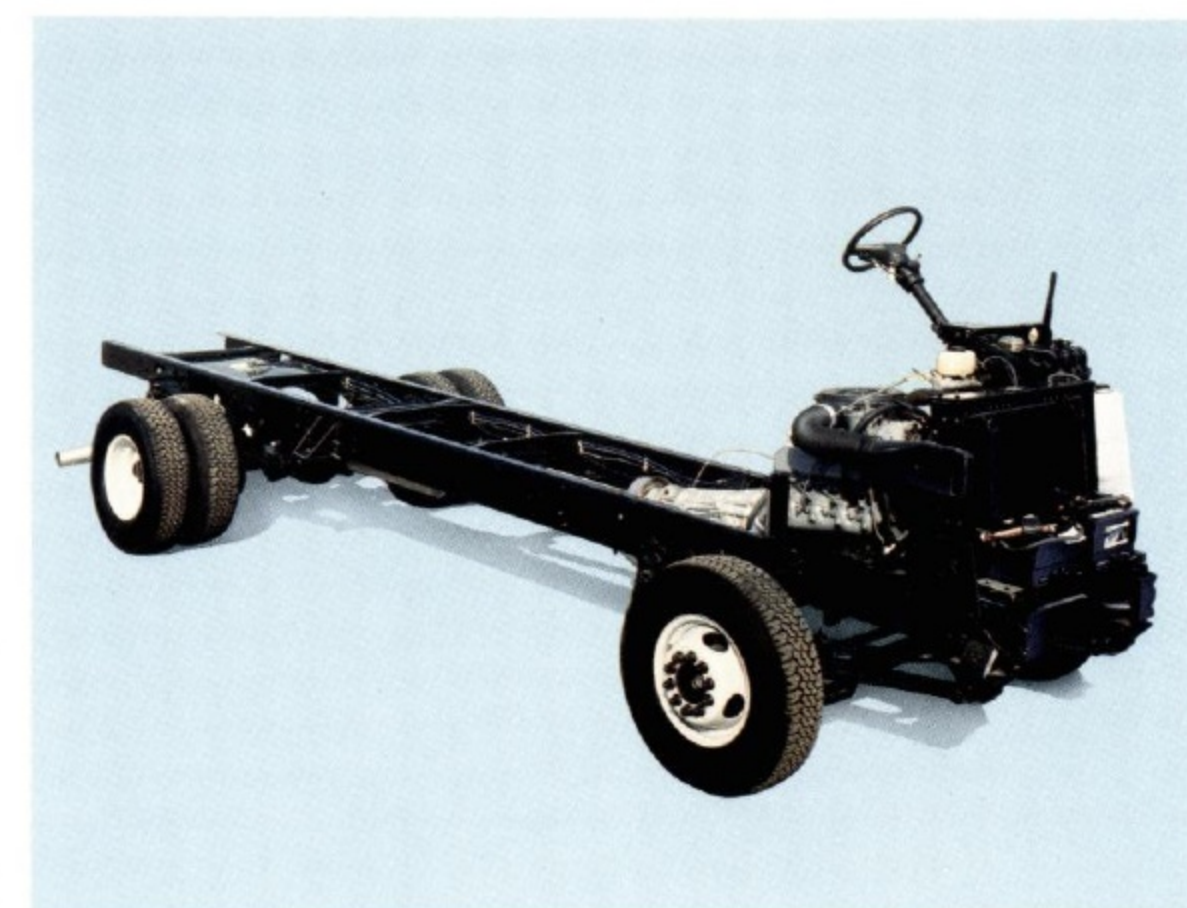
The Super Club Wagon XLT in Electric Red Clearcoat Metallic. Some equipment shown is optional.



The Super Club Wagon with its standard seating for 15 passengers (XLT shown here) is ideal for van pooling or shuttle bus service. A 12-passenger seating arrangement is available with XL trim. Some equipment shown is optional.



The Econoline Cutaway Chassis provides the frame and cab compartment to which you have a custom cargo or RV body added. See pages 14-15 for cutaway chassis information.



E- and F-Series Stripped Chassis come without the body, driver's compartment and front-end sheet metal. You add a commercial or RV body. Specifications are provided on pages 16-17.

BUMPER-TO-BUMPER COVERAGE

The 36-month/36,000-mile bumper-to-bumper coverage of Ford's new vehicle limited warranty covers the complete vehicle (except tires, battery, service adjustments and other items covered under separate provisions) against defects in factory-supplied materials or workmanship. For complete information, see your Ford Dealer.

ROADSIDE ASSISTANCE PROGRAM

Every new Ford includes the assurance of an emergency Roadside Assistance Program provided by Ford Auto Club, Inc. during the 3-year/36,000-mile bumper-to-bumper warranty period. Help is a toll-free phone call away 24 hours a day, anywhere in the continental United States should you need any towing assistance, fuel delivery, tire change, a jump start, or even help when you're locked out of your truck. Ask your dealer for complete details on the Ford Roadside Assistance Program and a copy of this limited warranty.

FORD CITIBANK CREDIT CARD

Using your Ford Citibank Visa® or MasterCard® could earn you hundreds, even thousands of dollars from Ford toward the purchase or lease of a new Ford, Lincoln or Mercury product. To apply or get more information, call

1-800-374-7777. Or visit a Ford or Lincoln-Mercury dealer, or a branch office of Citibank.



Ford Credit is a full service company that makes a wide variety of financing and leasing programs available to qualified buyers through the Ford Dealer of your choice. Through Ford Credit's financing or Red Carpet leasing, arrangements suited to your special needs can be made quickly and conveniently right at the dealership. Ask your Ford Dealer for the facts on any of Ford Credit's financing or lease plans.



Optional Ford Extended Service Plans can cover major components on new Ford cars and light trucks for longer than the vehicle's basic warranty. Your Ford Dealer has full details.

FEDERAL REGULATIONS

Federal regulations such as those issued by the National Highway Traffic Safety Administration, the Environmental Protection Agency or the Federal Highway Administration, or issued pursuant to the Occupational Safety and Health Organization (OSHA) and/or state and local laws and regulations, may require additional equipment for the particular use you intend for the vehicle. It is the buyer's responsibility to determine the

applicability of such laws and regulations to the buyer's intended use for the vehicle and to arrange for the installation of required equipment. Your dealer has information about the availability of many items of equipment which can be ordered for the vehicle.

IMPORTANT INFORMATION

Many of the items shown on vehicles in this publication are available through retail organizations and establishments not connected with Ford Motor Company. Availability, price, quality and durability of these items rest solely with the respective manufacturers and their sales organizations; Ford assumes no responsibility for their use.

PRODUCT CHANGES

Following publication of this catalog, certain changes in standard equipment, options, prices and the like, or product delays, may have occurred which would not be included in these pages. Your Ford Dealer is your best source for up-to-date information. Ford Division reserves the right to change product specifications at any time without incurring obligations.

OPTIONS AVAILABILITY

Options shown or described are available at extra cost and may be offered only in combination with other options or subject to additional ordering requirements or limitations.



Printed on recycled paper
10% post-consumer waste

