

1995 FORD

AEROSTAR



1995 AEROSTAR

Aerostar Wagon is a most versatile minivan, a popular, proven vehicle that's priced right and designed to meet the multiple transportation needs of today's family.

CAPABILITY

A 3.0L V-6 is standard with 2WD Aerostars. The muscular 4.0L V-6 is available with extended-length models (included with E4WD). This V-6 power coupled with rear-wheel drive delivers Class III towing capability (when properly equipped). It also helps Aerostar handle substantial cargo.

4-WHEEL DRIVE

Technology provides additional performance. The extra traction of an electronic "full-time" 4-wheel-drive system (E4WD) is available with the extended-length model's Preferred Equipment Package.

SAFETY

Aerostar includes a standard driver's side air bag to supplement the safety belts, new side door intrusion beams, a rear-wheel anti-lock braking system for more controlled stops, and optional integrated child safety seats.

CHOICE

With Aerostar, you have a choice between regular- or extended-length models. Pick the one that best suits your particular requirements.



Above: Aerostar XLT in Deep Emerald Green Clearcoat Metallic. A properly equipped extended-length 2WD Aerostar Wagon (not shown) is rated to tow up to 4,400 lbs. (reduced by passenger and cargo weight in the towing vehicle).

Left: Aerostar's optional floor console includes convenient cup holders for the 2nd-row passengers as well as handy storage bins.



AEROSTAR WAGON XLT

Inside Aerostar Wagon's roomy 7-passenger interior you'll find deluxe appointments and comfort features including dual front reclining captain's chairs with 2- and 3-passenger bench seats. Or choose optional quad captain's chairs with the 3-passenger combination seat/bed

(extended wagon). Standard convenience features include air conditioning and an automatic transmission.

Preferred Equipment Packages contain items like speed control and tilt wheel, power windows/door locks, electric remote mirrors, privacy glass, rear defroster and an AM/FM stereo sound system/cassette.



Above: The Aerostar XLT interior in Medium Grey. Standard 7-passenger seating features dual front captain's chairs and 2- and 3-passenger rear bench seats.

Left: Aerostar's instrument panel features ergonomically designed instruments and controls. The shifter for the standard automatic overdrive transmission is conveniently positioned on the steering column.

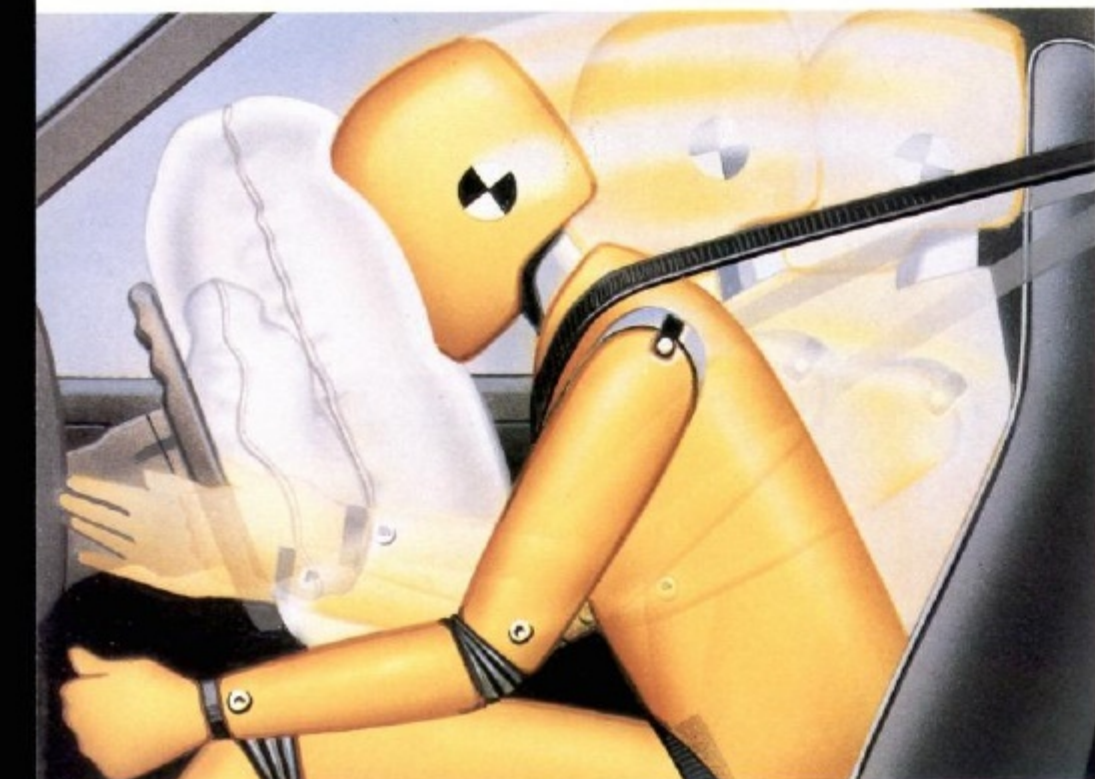
Some equipment shown on these pages is optional.

CAPABILITY & SAFETY

Because Aerostar is such an ideal family vehicle, its design and engineering technologies work to make driving efficient and comfortable. But far more important than this is safety, and built into Aerostar are features designed to help protect you and your family while you're on the road.

A driver's side air bag to supplement the safety belts, for example, is standard. Used with the safety belts, it's one of the most effective protection devices in existence. Aerostar also incorporates side door intrusion beams.

The rear-wheel anti-lock brake



Above: Aerostar standard equipment includes a driver's side air bag to supplement the safety belts. Outboard occupants, front and rear, have 3-point lap and shoulder restraints.

Right: The "full time" E4WD system, optional with extended-length Aerostar, is engineered to help you maintain control in all kinds of weather.



system, also standard, is computer controlled. And along with the added stopping control the rear-wheel anti-lock brakes can provide, you may choose the extra traction of Aerostar's state-of-the-art electronic 4-wheel drive.

AEROSTAR E4WD

Available in the extended-length Preferred Equipment Package 403A, E4WD is engineered to help you maintain control in all kinds of weather. And the system operates "full time," without you having to touch a single switch.

Normally, the system assigns 1/3 of the engine power to the front driving wheels and 2/3 to the rear driving wheels. But when wheel slippage is detected, the computer briefly "locks" the drive shaft of the slipping wheel to the drive shaft (front or rear) with non-slipping wheels.

The transfer case differential lock is then released and the computer "checks" to see if the slippage still exists. If it does, the drive shafts are relocked. This cycle is repeated until normal 4-wheel traction is again achieved.



Above: Extended-length Aerostar XLT in Brilliant Blue Clearcoat Metallic.

Far left: Standard rear-wheel anti-lock brakes are computer controlled for better braking performance under adverse conditions.

Left: Optional integrated child safety seats are available with the 2-passenger bench seat.

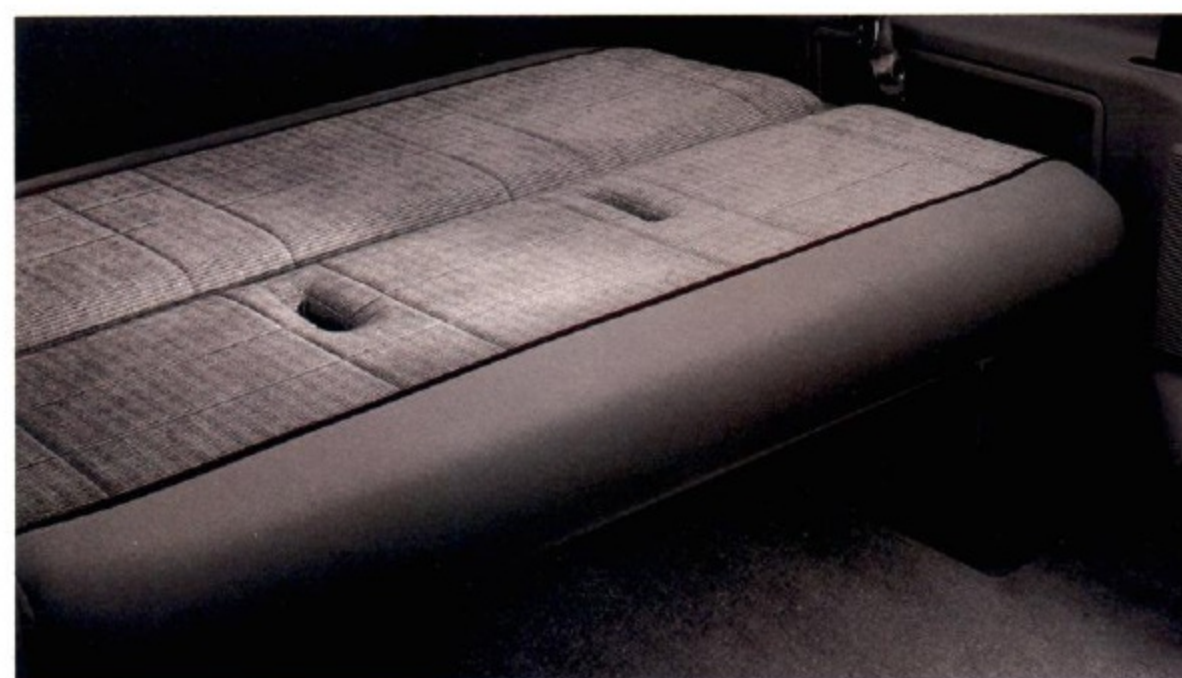
Some equipment shown on these pages is optional.

AEROSTAR FEATURES

A storage bin is conveniently located under the front passenger seat. It's standard with both regular- and extended-length models.



Convenient rear controls for sound systems and the optional high-capacity air conditioner are provided.



The versatile rear seat/bed, optional with the extended-length Aerostar, is the kind of feature you would find in a luxury van conversion.



Medium Willow Green
Clearcoat Metallic



Deep Emerald Green
Clearcoat Metallic



Light Willow Green
Clearcoat Metallic



Mocha Frost
Clearcoat Metallic



Black Clearcoat



Oxford White Clearcoat



Iris Frost
Clearcoat Metallic



Electric Red
Clearcoat Metallic



Brilliant Blue
Clearcoat Metallic



Dark Blue
Clearcoat Metallic

PAINT AND TRIM COMPATIBILITY

Exterior Paint Colors

	Interior Trim Colors		
	Crystal Blue	Medium Grey	Mocha
Medium Willow Green Clearcoat Metallic		■	■
Mocha Frost Clearcoat Metallic			■
Iris Frost Clearcoat Metallic		■	■
Electric Red Clearcoat Metallic		■	■
Brilliant Blue Clearcoat Metallic	■	■	
Dark Blue Clearcoat Metallic	■	■	■
Deep Emerald Green Clearcoat Metallic		■	■
Light Willow Green Clearcoat Metallic			■
Black Clearcoat		■	■
Oxford White Clearcoat	■	■	■

Note: See your dealer for available deluxe two-tone paint combinations on extended-length wagons.

MAJOR STANDARD FEATURES

Exterior

- Color-coordinated front and rear bumpers
- Tinted glass
- Aero foldaway mirrors (RH convex)
- Lower two-tone paint (extended-length wagons only)
- Flush windshield, bodyside and liftgate window surround moldings
- Interval front wipers and rear window washer/wiper
- Underbody space saver spare tire carrier
- Sliding glass in the side door and opposite windows
- Front spoiler
- Full face wheel covers

Interior

- 7-passenger seating with reclining dual captain's chairs, 2-passenger and 3-passenger benches
- Power lumbar supports and seat-back map pockets (extended-length wagons only)
- Right-hand under-seat stowage bin
- Front air conditioning
- Driver's side air bag to supplement the safety belts
- Color-keyed integral lap/shoulder belts for all outboard occupants; rear center lap belt
- Speed control/tilt steering wheel (extended-length wagons only)
- Full-length color-keyed carpeting
- Full wrapover door trim
- Carpet-covered engine cover
- Inside fuel filler door release
- Full-length color-keyed cloth headliner
- 4-gauge mechanical instrumentation
- Front dome and stepwell lights
- Convenience group: includes courtesy lamp switches (all doors) and cargo lamp
- Rear vinyl-covered quarter trim panels
- Electronic AM/FM stereo radio with digital clock
- 3 rear bodyside storage bins (extended-length model has one additional bin in the right-hand panel and two bins in the floor)
- Cloth-covered sun visors with illuminated visor mirrors

Functional

- 3.0L V-6 engine/automatic overdrive transmission (2WD wagons)
- 4.0L V-6 engine/automatic overdrive transmission (E4WD wagons)
- Multi-port electronic fuel injection with EEC-IV computer
- Power steering
- Power brakes with rear anti-lock system
- Four-corner coil spring suspension system with gas-pressurized shock absorbers
- P215/70R14 BSW all-season tires
- P215/75R14 BSW all-season tires (required and available only with extended-length 2WD wagons)
- 21-gallon fuel tank

PREFERRED EQUIPMENT PACKAGES AND OPTIONS

	XLT Regular Length 402A	XLT Extended Length 403A
APPEARANCE/CONVENIENCE/SAFETY		
Front air conditioning	S	S
Privacy glass (includes tinted windshield and front door glass)	O	P
Speed control and tilt steering wheel	O	S
Convenience group:		
Electric rear window defroster	O	P
Power convenience group ⁽¹⁾	O	P
Electronic AM/FM stereo radio with cassette tape and clock ⁽²⁾	O	P
Front and rear auxiliary air conditioner/heater	O	O
Integrated child safety seats	O	O
Floor console with cup holders and storage bins	O	O
Light group ⁽³⁾	O	O
Exterior appearance group ⁽⁴⁾	-	O
"A" pillar mirrors (included in exterior appearance group)	O	-
Bodyside protection molding	O	O
Luggage rack	O	O
Forged aluminum wheels	O	O
SEATING		
Seven-passenger seating with quad captain's chairs; 3-passenger seat/bed	-	O
PERFORMANCE		
3.0L V-6/automatic overdrive (available on 2WD models only)	S	S
4.0L V-6/HD automatic overdrive (may be deleted without loss of package discount on 2WD wagons; included and required with E4WD wagons)	-	P
Electronic 4-wheel drive (E4WD)	-	O
Limited-slip rear axle	O	O
Engine block heater	O	O
Trailer towing package ⁽⁵⁾	O	O

P = Package feature (content is subject to change) S = Standard O = Optional

(1) Power windows and door locks and dual remote-control electric mirrors. (2) Rear radio controls, headphone jacks and six speakers. (3) Glove box, under instrument panel, under-hood lamps and illuminated entry system. (4) Styled wheel covers, "A" pillar mirrors, privacy glass and deluxe two-tone paint. (5) Class I wiring harness, heavy-duty turn signal flasher and limited-slip axle with axle ratio upgrade.

PRODUCT CHANGES

Following publication of the catalog, certain changes in standard equipment, options, prices and the like, or product delays, may have occurred which would not be included in these pages. Your Ford Dealer is your best source for up-to-date information. Ford Division reserves the right to change product specifications at any time without incurring obligations.

OPTIONS AVAILABILITY

Options shown or described are available at extra cost and may be offered only in combination with other options or subject to additional ordering requirements or limitations.

THE OWNERSHIP EXPERIENCE

We've gone to great lengths to make the experience of driving a Ford Aerostar Wagon enjoyable. The experience of owning an Aerostar, too.

We stand behind your vehicle with our 3-year/36,000-mile bumper-to-bumper limited warranty. And we look after your security with our no-cost Roadside Assistance Program. Expect nothing less from a customer-driven company.

ROADSIDE ASSISTANCE PROGRAM

Every new Ford includes the assurance of an emergency no-cost Roadside Assistance Program provided by Ford Auto Club, Inc. during the 3-year/36,000-mile bumper-to-bumper warranty period.

Help is just a toll-free phone call away, 24 hours a day, anywhere in the 50 United States, should you need any towing assistance, fuel delivery, tire change, a jump start, or even help when you're locked out of your car. Ask your Ford Dealer for complete details on the Ford Roadside Assistance Program and also for a copy of the limited warranty.

BUMPER-TO-BUMPER COVERAGE

The 36-month/36,000-mile bumper-to-bumper coverage of Ford's new vehicle limited warranty covers the complete vehicle (except tires, battery, service adjustments and other items covered under separate provisions) against defects in factory-supplied materials or workmanship. For complete information, see your dealer.



Ford Credit is a full service company that makes a wide variety of financing and leasing programs available to qualified buyers through the Ford Dealer of your choice. Through Ford Credit's financing or Red Carpet leasing, arrangements suited to your special needs can be made quickly and conveniently right at the dealership. Ask your Ford Dealer for the facts on any of Ford Credit's financing or lease plans.

FORD CITIBANK CREDIT CARD

Using your Ford Citibank Visa® or MasterCard® could

earn you hundreds, even thousands of dollars from Ford toward the purchase or lease of a new Ford, Lincoln or Mercury product. To apply or get more information, call 1-800-374-7777. Or visit a Ford or Lincoln-Mercury Dealer, or a branch office of Citibank.



Optional Ford Extended Service Plans can cover major components on new Ford cars and light trucks for longer than the vehicle's basic warranty. Your dealer has full details.

DEALER-INSTALLED ACCESSORIES

The enjoyment of owning a new vehicle begins before you take delivery, when you're selecting colors and features.

Along with the items listed on pages 6-7, there are Ford-brand accessories available at your dealer.

They meet or exceed our strict specifications, and they are custom designed and manufactured to complement the style and quality of your Ford-built vehicle.



Printed on recycled paper
10% post-consumer waste

