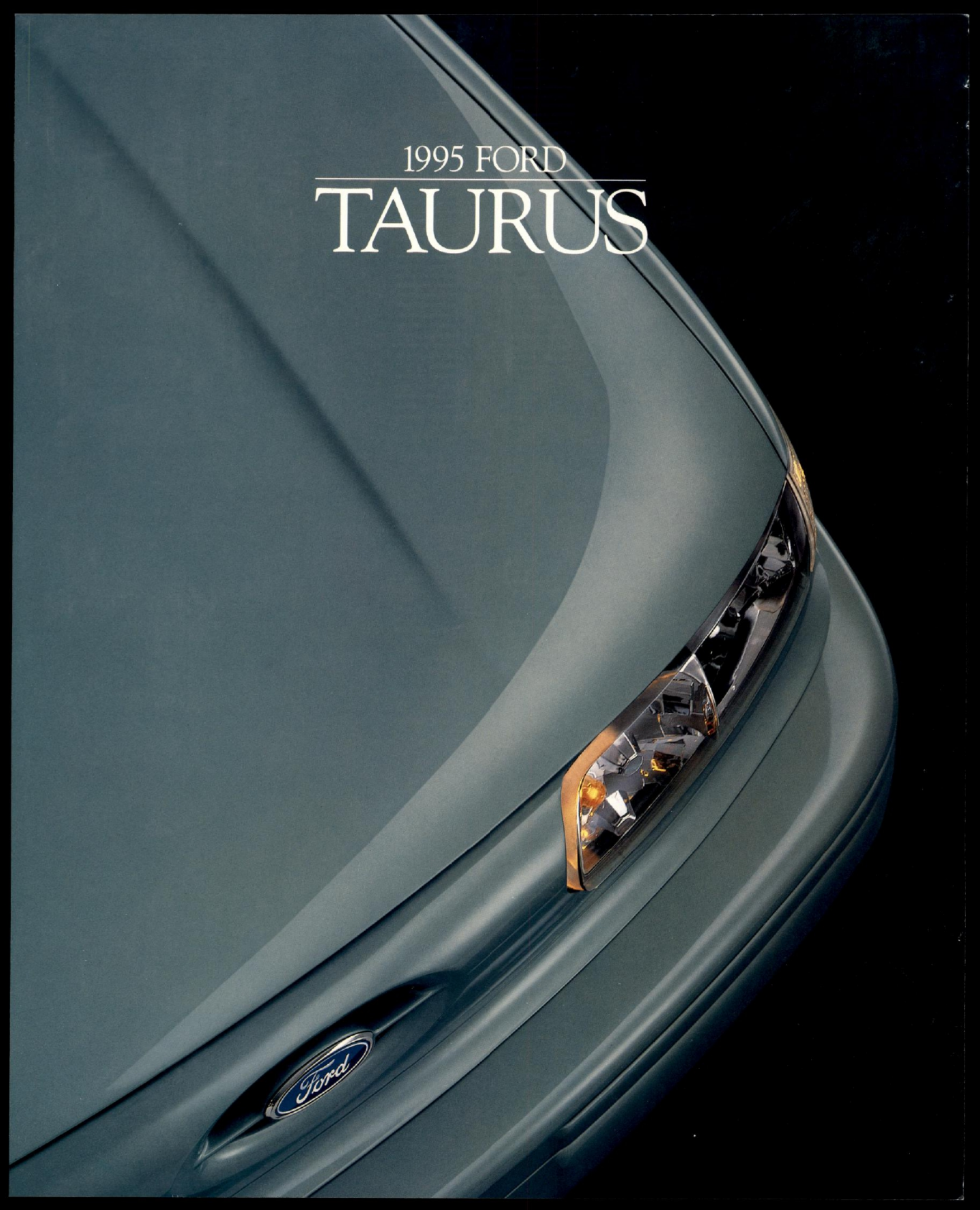


1995 FORD  

---

TAURUS





# TAURUS

Ford Taurus is a product of our philosophy of continuous improvement. Even a car of world-class stature like the Taurus must always be improved, to provide an ever more rewarding experience for the driver and more riding comfort for all passengers.

## AMERICA'S PREMIER MID-SIZE CAR

As Taurus' award-winning, world-class design has evolved since its introduction, a steady stream of improvements has come in response to the ever growing needs of our customers. And they have responded by making the Taurus America's best-selling car for the past two years.

## BETTER THAN EVER FOR 1995

This year, as in every other, the only thing that has remained constant is that Taurus continues to change for the better.

The standard powerteam delivers smoother and quieter performance. The suspension system is improved as well, providing greater ride comfort and better handling control.

The front shoulder belt attachments are lower for enhanced comfort—one of many small details that contribute to customer satisfaction.

Also, now standard are solar tinted windshield glass (and rear window on the sedan) designed to help reduce heat buildup, a rear window defroster, and the comfort of air conditioning.

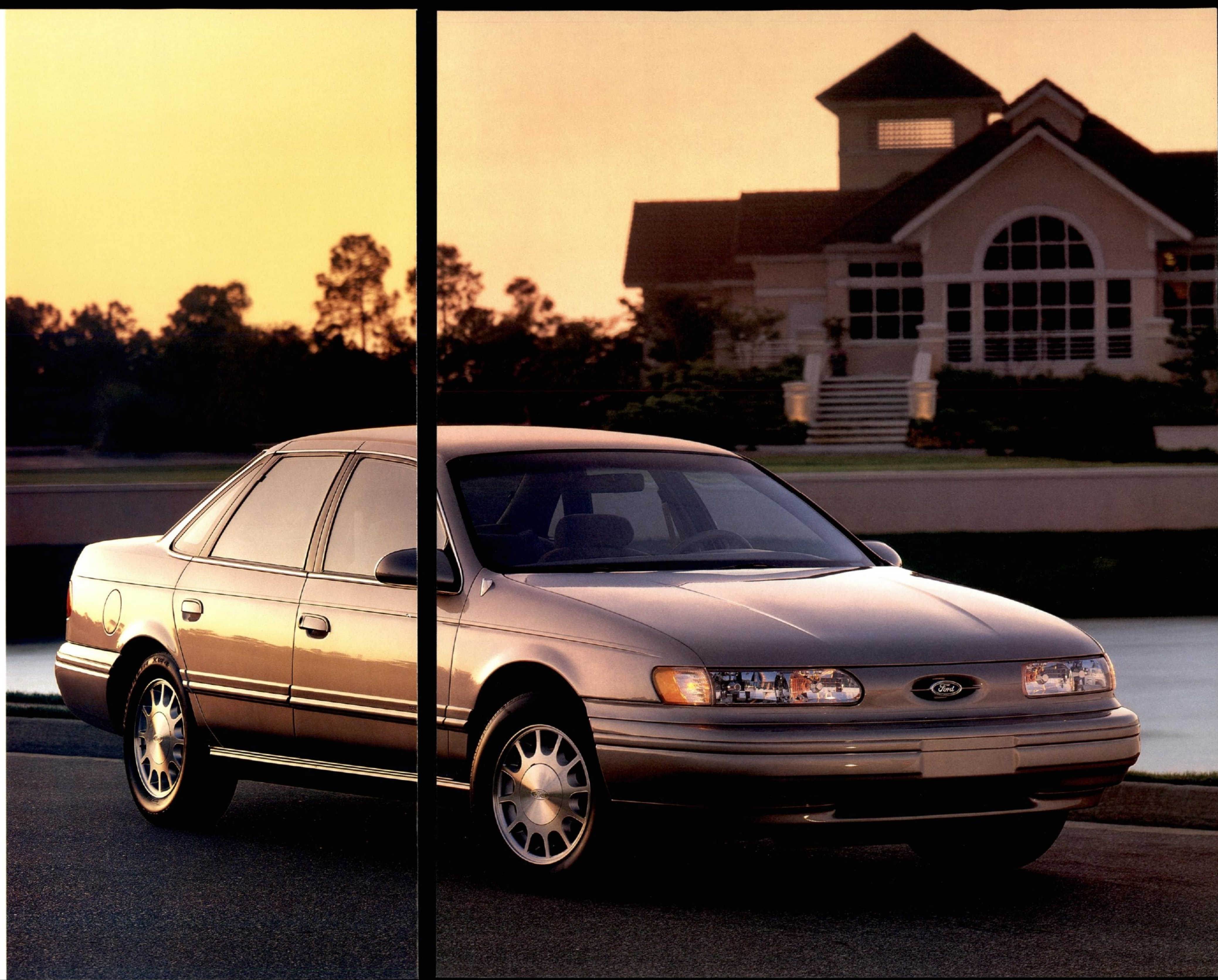
## A TAURUS TO MATCH YOUR STYLE

Choose a five- or six-passenger Taurus sedan. Or a spacious and versatile Taurus wagon.

Joining the line-up of family-size GL, personal-luxury LX and high-performance SHO models is the new Special Edition (SE) sports sedan.

Every Taurus is V-6-powered, rides beautifully, and handles confidently. And in the impressive list of occupant safety features are dual air bags. But always be sure to buckle up.

**SE** *The new SE sports sedan in Champagne Clearcoat Metallic. Some equipment shown may be optional.*





# NEW TAURUS SE

Introducing the Ford Taurus Special Edition (SE) 4-door sports sedan.\*

It's everything that has made Taurus the premier mid-size car in America: Style. Comfort. World-class design.

Plus something else besides: Sports styling flair—the perfect complement to the Taurus' excellent overall performance.

## A FRESH NEW EXPRESSION OF A WORLD-CLASS DESIGN

Halogen headlamps with clear lenses blend smoothly into the aero hood line. The P205/65R15 black sidewall all-season steel radial tires are mounted on bright machined cast aluminum wheels. An available rear decklid spoiler enhances not only the SE's styling flair but Taurus' air-flow design as well.

Inside you'll find reclining sport bucket seats with floor console, power-adjustable side and back bolsters for both seats, and 6-way power for the driver (forward/back, tilt up/down and tilt forward/back).

These sport seats are body-contoured and are designed to help hold you in position, even when you're cornering. They're handsomely trimmed in cloth and leather. Full leather seating surfaces are available.

Along with SE's sport seating you also have, of course, the ergonomically designed instrumentation and controls that make every trip behind the



*Taurus SE in Vibrant White Clearcoat. Some equipment shown may be optional.*

wheel of a Ford Taurus a rewarding driving experience. Plus the roominess, comfort and space-efficiency of Taurus' world-class interior design.

## POWER AND HANDLING TO MATCH THE TAURUS SE STYLE

The standard 140-horsepower (SAE net) 3.0-liter V-6 for 1995 delivers smoother and quieter performance than before.

And it's teamed with a fully electronic 4-speed automatic transaxle that's been improved to provide a smoother, more seamless shifting feel.

For even higher-torque performance, there's the optional 3.8-liter V-6.

Taurus' EEC-IV computer-controlled engines feature the precise fuel metering of a state-of-the-art sequential electronic fuel-injection system (SEFI).

The 4-wheel independent suspension with anti-roll bars is also improved, delivering greater control while you're accelerating, cornering or braking—as well as providing higher ride comfort over all kinds of road conditions.

The new SE. It has plenty of style and performance. And best of all, it's a Taurus.



*A rear decklid spoiler is available to enhance Taurus SE's youthful styling flair as well as its aerodynamic efficiency.*

*\*See your Ford Dealer for availability.*



**SE** *Taurus SE interior with cloth and leather sport bucket seats in Mocha. Some equipment shown may be optional.*



# TAURUS LX



The spacious and well-appointed Taurus LX Wagon in Deep Emerald Green Clearcoat Metallic. LX Wagon is powered by a standard 3.8-liter SEFI V-6. Some equipment shown may be optional.



Taurus LX. Here's your personal touring sedan. Richly appointed. Well equipped. And engineered to move you smoothly and confidently with its sequential port fuel-injected V-6 power and sophisticated 4-wheel independent suspension.

LX sedan features reclining front bucket seats with power lumbar supports as well as 6-way power seat adjustment for the driver. The spacious LX wagon has a cloth reclining split bench front seat.

LX comes with a fine list of amenities including: Power window/door locks. Luxury console (sedan). Remote fuel filler door and decklid/liftgate releases. Automatic parking brake release. The full array of courtesy lights, too, plus automatic on/off headlamps. And, for added security, the illuminated entry system.

# LX

*Taurus LX Sedan in Electric Red Clearcoat Metallic. Bright machined cast aluminum wheels and bodyside cladding are standard. Some equipment shown may be optional.*



# TAURUS COMFORT

There are many reasons why Taurus is America's premier car in its class. Its style. Its smooth performance. Its ride quality and agile handling. Its roomy interior and passenger comfort. And, perhaps best of all, its rewarding driving experience.

## A GREAT DRIVING CAR. A FINE PASSENGER CAR

Looking at the Taurus' ergonomic layout, you can see it's smoothly designed—and well integrated with a "flow-through" theme blending the instrument and the door panels.

It's when you get into the fine details, however, that you really begin noticing how much effort has gone into making Taurus such a pleasure to drive.

Convenience is evident in the driver-oriented instrumentation. The controls, easily identifiable by touch, are easy to reach and require little effort to operate. The instruments are logically

*Taurus' ergonomic instrument panel below in Opal Grey. Some equipment shown may be optional.*



*At left: The well-appointed Taurus LX interior with front bucket seats in Opal Grey. Some equipment shown, such as the leather seating surfaces, is optional.*



*Above, from top: Available power windows and door locks have tactile controls that are easy to find and operate so that you won't have to take your eyes from the road.*

Taurus SE, LX and SHO come with a luxury console that includes a flip-up padded armrest, storage bin and depression for beverage container.

Remote-control fuel filler, liftgate (sedan) and decklid (wagon) releases are standard in LX and SHO; available in GL and SE.

arranged and are located and colored to make them easy to read at a glance. Note, too, such details as the wide and flat door armrests for comfortable support. And conveniences such as the dual electric remote mirrors.

When it comes to comfort, especially for family travel, Taurus is hard to beat. There's 5- or 6-passenger seating, depending on the front seat arrangement. Deluxe features such as air conditioning are standard. And the 4-wheel independent suspension system delivers outstanding ride quality.

Taurus offers 5-passenger seating with the front bucket seats (shown above) or family-size 6-passenger seating with the split bench front seat (illustrated at right in optional leather seating surfaces). Both provide dual reclining front seat backs.





# TAURUS GL



*The family-size, 6-passenger Taurus GL Sedan in Indigo Blue Clearcoat Metallic. Some equipment shown may be optional.*



Over the years, the popular Taurus GL sedan and wagon have brought world-class travel accommodations to families all across America. And no wonder. Taurus GL has everything you could ask for. Style. Roominess. Comfort. Performance.

The sedan has a large 18.0-cu.-ft. deep-well trunk, due in part to rear shocks located out-board of the rear frame rails.

The spacious, versatile wagon provides seating for eight\* and cargo space from 38.2 to 81.1 cu. ft. (with the 60/40 split rear seat backs up or down, respectively). The rear suspension is specially designed to allow for a lower and wider load floor.

Choose the 3.0-liter V-6 or the available 3.8-liter V-6. Dual air bags are standard.† So are 6-passenger seating, AM/FM stereo, electric mirrors, interval wipers and much more. For the best in Taurus value, select the GL Preferred Equipment Package 204A.

## GL

*The roomy and versatile Taurus GL Wagon in Champagne Clearcoat Metallic. Some equipment shown may be optional.*

\*Eight passengers with optional rear facing third seat.

†Always wear your safety belts.



# SAFETY & SECURITY

There's only one thing more important than your physical comfort. And that's the peace of mind that comes with the knowledge that your car is well engineered for your safety.

## ENGINEERED TO HELP YOU AVOID AN ACCIDENT

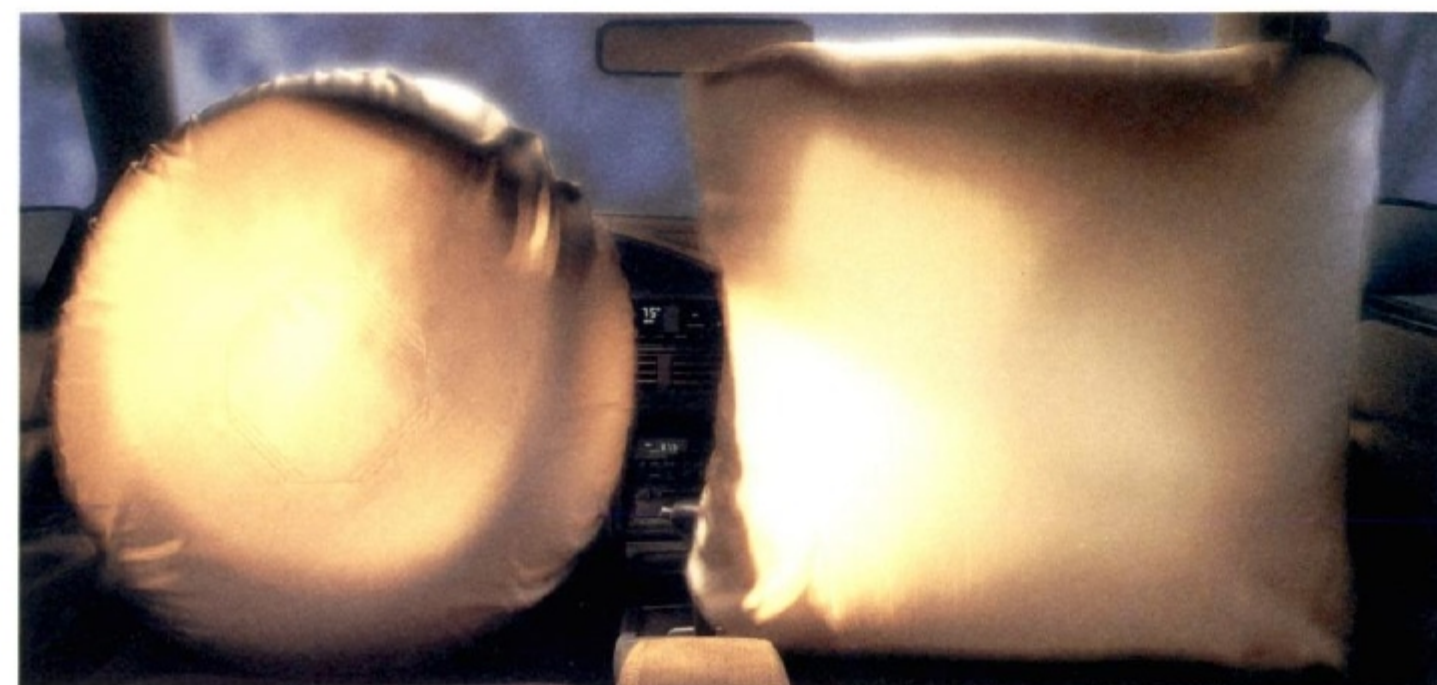
It's one thing to drive carefully. But it's another to be able to get out of the way of a potential accident when the time comes.

And when it does, Taurus' steering, suspension and braking systems are there to back up your best defensive driving instincts—and your skills.

Considering how roomy and comfortable Taurus is, it's easy to overlook how superbly this car handles, both the sedan and the wagon.

While handling is important to the experience of driving enjoyment, it is of crucial importance to "operating safety"—or accident avoidance.

Taurus' sophisticated suspension system provides 4-wheel independent control over rough roads. And components such as nitrogen gas-pressurized hydraulic struts help provide consistent ride smoothness and handling balance.



What's more, Taurus sedan and wagon models have a stabilizer bar not only up front but also at the rear. Contributing as well to Taurus' surprisingly agile handling is a low-lift aerodynamic shape that uses the wind to increase downforce on the vehicle body for greater stability.

Taurus also features precise power rack-and-pinion steering. Plus power front disc/rear drum brakes, to which you can add the Anti-lock Brake System (ABS), optional on GL, SE and LX and standard on SHO.

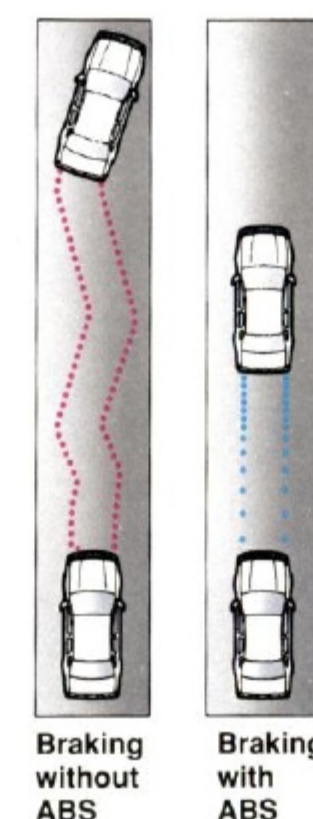
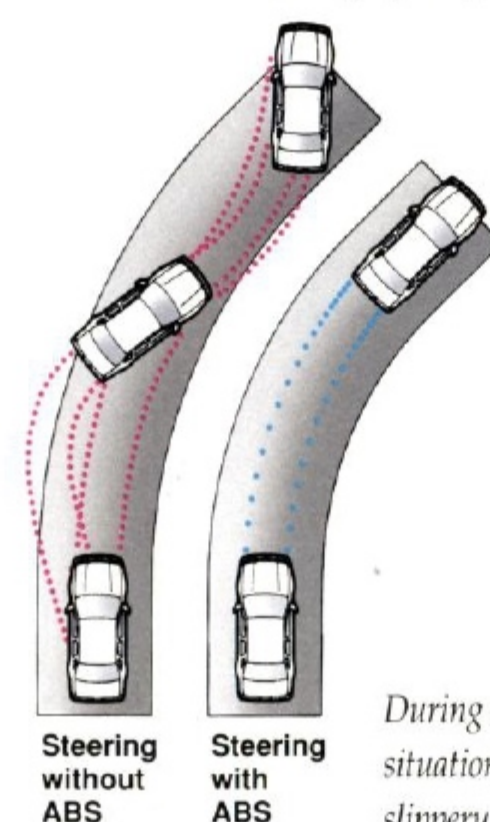
In a hard braking situation or on a slippery surface, while you're firmly holding the brake pedal, ABS applies and releases the brakes at a rate far exceeding that of human capability, providing straighter stops and greater steering control.

## SAFETY FEATURES LIKE DUAL AIR BAGS TO PROTECT YOU IN AN ACCIDENT

If an accident should occur, "occupant safety" features are there to help provide the measure of protection you need.

The unitized body has specially designed crush zones engineered to absorb impact forces. And there are numerous features throughout the interior, the most notable of which are the dual air bags that come standard for the driver and right front passenger. But effective as the air bags are, they're not substitutes for the safety belts. So always be sure to buckle up.

Air bags are standard for the driver and right front passenger.



During a hard braking situation or on a slippery surface, while you're firmly holding the brake pedal, the Anti-lock Brake System applies and releases the brakes up to 10 times per second—a rate much faster than is humanly possible. The results are straighter stops and greater steering control.

For added security, a remote keyless entry system is available. Two transmitters are included. See page 18 for availability by model.





# TAURUS SHO

In a SHO, the ultimate Taurus, you're traveling easily in the company of the world's finest performance sport sedans.

## WORLD-CLASS POWER

SHO delivers a real world-class performance, with its 24-valve, dual-overhead-cam V-6 equipped with a sequential electronic fuel-injection system.

Displacing 3.0 liters (with the manual transaxle) or 3.2 liters (with the automatic transaxle), the SHO (Super High Output) V-6 engine is remarkably

power-efficient, and it has one of the highest ratios of power to displacement among normally aspirated engines.

The 24 valves (four per cylinder: two for intake and two for exhaust, actuated by dual overhead camshafts) promote high-flow/velocity breathing and rapid-burn combustion. And their lightweight design and low-tension springs enable the engine to run effortlessly at high rpm.

SHO features a dual plenum chamber design: Six long small-diameter runners are turned for low-rpm breathing. At higher rpm, where more air is needed, secondary valves open to allow in additional air through six short large-diameter runners.

SHO's racing-inspired air induction system, 24 valves and dual overhead cams deliver exceptional performance over the full range of driving conditions.

## WORLD-CLASS HANDLING, BRAKING

You'll find quite impressive also the 4-wheel independent suspension system that's equipped with special components to enhance handling capability.

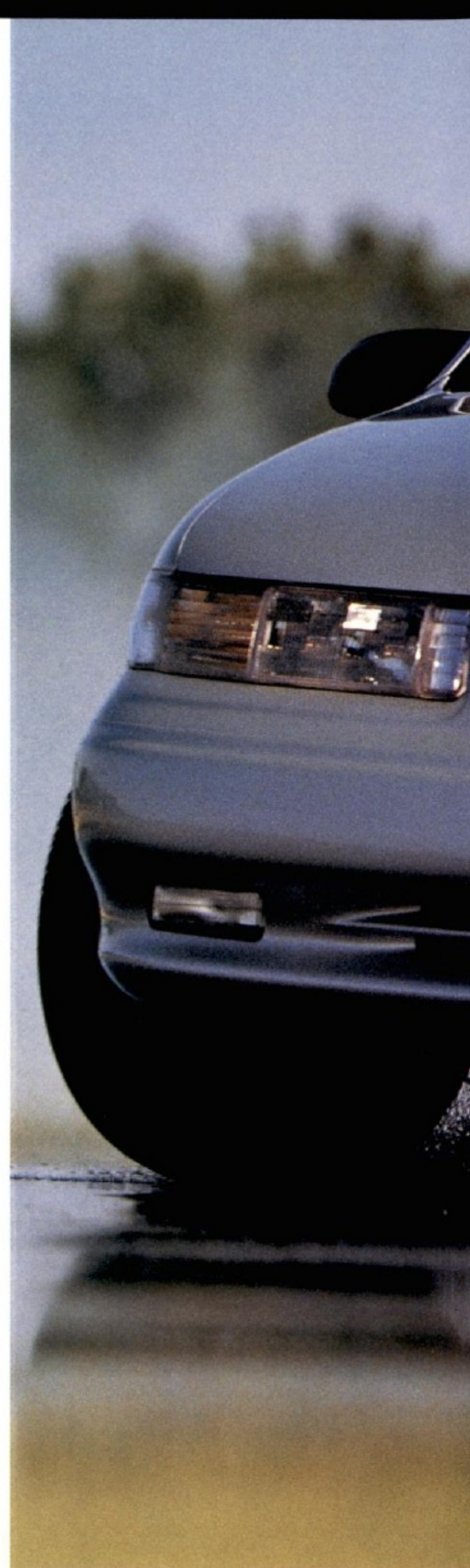
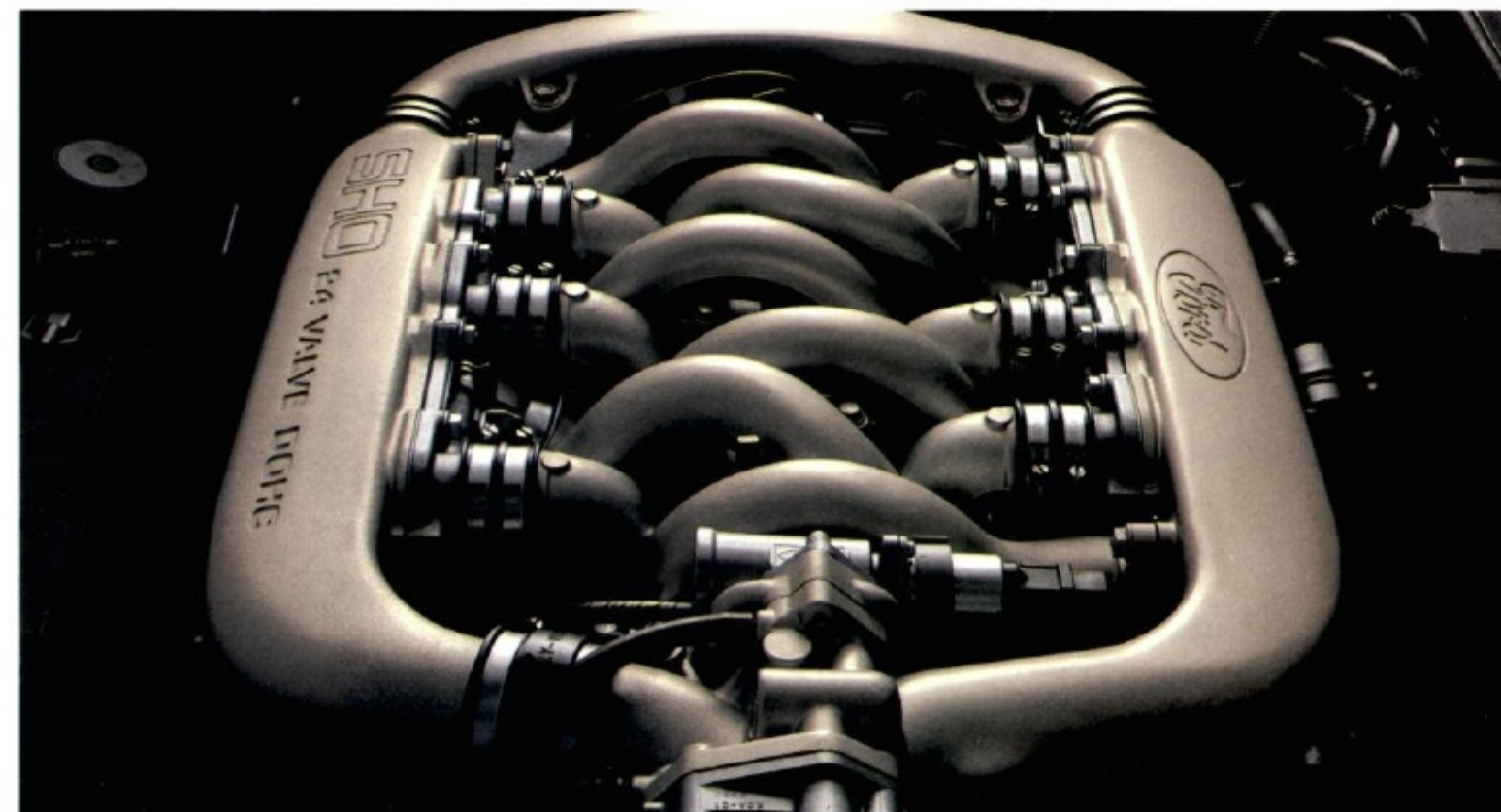
And SHO rides on unidirectional cast aluminum wheels that are matched to 16" ZR-rated high performance radials.

What's more, the Taurus SHO features 4-wheel power-assisted disc brakes with a computer-controlled Anti-lock Brake System to complement its world-class power and handling.

*The superbly equipped and appointed Taurus SHO interior with sport bucket seats in Opal Grey. Some equipment shown may be optional.*



*An optional electronic 4-speed automatic overdrive transaxle is offered on Taurus SHO with a higher-displacement 3.2-liter V-6 to maximize performance. Standard engine is a 3.0-liter 24-valve V-6 with 5-speed manual overdrive transaxle.*



## DESIGNED FOR THE DRIVER WHO LOVES TO DRIVE

Even before you're seated you can sense that SHO is a car meant for those who take driving enjoyment seriously.

The sport bucket seats are body-contoured to help hold you in position, even when you're cornering. The reclining seat backs have 4-way head restraints, power-adjustable side

and back bolsters. The driver has 6-way power adjustment. There's a console with flip-up padded armrest and storage bin.

In the instrument cluster are an 8,000-rpm tachometer and diagnostic alert lights for door ajar, low washer fluid, low oil, low brake fluid, headlamp or taillamp out.

Standard features also include: Speed control. Leather-wrapped wheel. Power windows and door locks. Electronic temperature control air conditioning. High-level Audio System. And much more.

# SHO

*The Taurus SHO sport touring sedan in Silver Frost Clearcoat Metallic. Some equipment shown may be optional.*



# THE OWNERSHIP EXPERIENCE



We've gone to great lengths to make the experience of driving a new Ford Taurus enjoyable. The experience of ownership, too.

We stand behind your car with our 36-month/36,000-mile bumper-to-bumper limited warranty. And we look after your security with our no-cost Roadside Assistance Program. You can expect nothing less from a "customer-driven" company.

## ROADSIDE ASSISTANCE PROGRAM

Every new Ford includes the assurance of an emergency no-cost Roadside Assistance Program provided by Ford Auto Club, Inc. during

the 3-year/36,000-mile bumper-to-bumper warranty period. Help is just a toll-free phone call away, 24 hours a day, anywhere in the 50 United States, should you need any towing assistance, fuel delivery, tire change, a jump start, or even help when you're locked out of your car. Ask your Ford Dealer for complete details on the Ford Roadside Assistance Program and also for a copy of the limited warranty.

## BUMPER-TO-BUMPER COVERAGE

The 3-year/36,000-mile bumper-to-bumper coverage of Ford's new vehicle limited warranty covers

the complete vehicle (except tires, battery, service adjustments and other items covered under separate provisions) against defects in factory-supplied materials or workmanship. For complete information, see your Ford Dealer.



Ford Credit is a full service company that makes a wide variety of financing and leasing programs available to qualified buyers through the Ford Dealer of your choice. Through Ford Credit's financing or Red Carpet leasing, arrangements suited to your special



needs can be made quickly and conveniently right at the dealership. Ask your Ford Dealer for the facts on any of Ford Credit's financing or lease plans.

## FORD CITIBANK CREDIT CARD

Using your Ford Citibank Visa® or MasterCard® could earn you hundreds, even thousands of dollars from Ford toward the purchase or lease of a new Ford, Lincoln or Mercury product. To apply or get more information, call 1-800-374-7777. Or visit a Ford or Lincoln-Mercury Dealer, or a branch office of Citibank.



Optional Ford Extended Service Plans can cover major components on new Ford products for longer than the basic warranty. Your dealer has full details.

## DEALER-INSTALLED ACCESSORIES

The enjoyment of owning a new car begins when you're selecting colors and features. Along with the items on pages 18-19, there are Ford-brand accessories available at your dealer. They meet or exceed our strict specifications; are designed to complement the style and quality of your Ford-built vehicle.

*Ford Taurus, like all Ford cars, comes with a 3-year/36,000-mile bumper-to-bumper limited warranty plus the no-cost Roadside Assistance Program. See your Ford Dealer for complete information on these and many other ownership service programs.*



# FEATURES & OPTIONS

## EXTERIOR FEATURES

	GL	SE	LX	SHO
Aero-design halogen headlamps	S	S	S	S
Aero-design halogen headlamps with crystalin lenses	-	P	S	-
Fog lamps and cornering lamps	-	-	-	S
Dual electric remote-control mirrors	S	S	S	S
Tinted glass — complete	S	S	S	S
Solar tinted windshield glass (and rear window on sedan)	S	S	S	S
Decklid spoiler	-	O	-	S
Bright door and quarter window surround moldings	S	S	S	-
Black-out sport treatment	-	-	-	S
Urethane coating on lower doors and rocker panels; bodyside protection moldings	S	S	-	-
Color-keyed bodyside cladding (unique on SHO)	-	-	S	S
Rocker panel moldings	S	S	S	S
Clearcoat paint	S	S	S	S
Paint stripe (included in GL/Equipment Group)	P	O	S	-

## SAFETY AND SECURITY

Driver and right front passenger air bags	S	S	S	S
Manual lap/shoulder belts for front and rear outboard passengers; lap belts for center occupants	S	S	S	S
Anti-lock Braking System (ABS)	O	O	O	S
Remote keyless entry system	O	O	P	O
Variable-timed interval windshield wipers	S	S	S	S
Child-proof rear door locks	S	S	S	S
Illuminated entry system*	-	-	S	S
High-mount rear brake lamp	S	S	S	S

## COMFORT AND CONVENIENCE

Electronic 4-speed automatic overdrive transaxle	S	S	S	O
Air conditioning, manual	S	S	S	-
Air conditioning, electronic temperature control	-	-	O	S
Power door locks and side windows	O	P	S	S
6-way power driver seat	P	P	S	S
6-way power driver and passenger seats	-	-	O	O
Floor console with flip-open padded armrest, storage bin and depression for beverage container	-	P	S	S
Automatic parking brake release	-	-	S	-
Automatic on/off/delay headlamps	-	-	S	S
Temperature and fuel gauges, low brake fluid alert light, trip odometer	S	S	S	S
Tachometer; indicator lights for door ajar, low brake fluid, low washer fluid, low oil level, and lamp out	-	-	S	S
Light Group (1)	P	O	S	S
GL Equipment Group (2)	P	O	-	-
Wagon Group (3)	O	-	P	-
LX Convenience Group (4)	-	-	O	-
Luxury Convenience Group (5)	-	-	-	O
Speed control	P	O	P	S
Cellular telephone with storage armrest	O	-	O	-
Rear window defroster	S	S	S	S

	GL	SE	LX	SHO
Remote decklid/liftgate/fuel filler door releases	P	O	S	S
Leather-wrapped steering wheel	-	-	P	S
Floor mats, front/rear	P	P	P	S
14-oz. carpeting with sound deadener (18-oz. in SHO)	S	S	S	S
Roof luggage rack (wagon)	S	-	S	-
Lockable under-floor storage compartment (wagon)	S	-	S	-
Rear facing third seat (wagon)	O	-	O	-
Rear seat fold-down armrest (sedan)	S	S	S	S
Rear seat heat ducts	S	S	S	S
Cargo tie-down net	-	-	S	S
Dual illuminated visor mirrors	-	-	S	S
Secondary visors for front/side coverage	-	-	S	S

## SEATING

Reclining cloth split bench seat (GL sedan/wagon)	S	-	-	-
Reclining cloth bucket seats/console (GL sedan/wagon)	O	-	-	-
Reclining cloth split bench seat (LX sedan) (6)	-	-	O	-
Reclining cloth split bench seat (LX wagon) (6)	-	-	S	-
Reclining cloth bucket seats/console (LX sedan) (6)	-	-	S	-
Reclining cloth bucket seats/console (LX wagon) (6)	-	-	O	-
Reclining cloth and leather sport bucket seats/console (6)	-	P	-	S
Leather seating surfaces—sport bucket seats/console (6)	-	O	-	O
Leather seating surfaces—bucket seats/console (6)	O	-	O	-
Leather seating surfaces—split bench seat (6)	-	-	O	-
60/40 split fold-down rear seat backs (wagon)	S	-	S	-

## SOUND SYSTEMS

Electronic AM/FM stereo radio	S	S	S	-
Electronic AM/FM stereo radio with cassette player	P	P	P	-
High Level Audio System	-	-	O	S
High Level Audio System with compact disc player	-	-	O	O
Ford JBL Audio System (7)	-	-	O	O
Power radio antenna	-	-	-	S

## WHEELS AND TIRES

Wheel covers with P205/65R15 BSW tires	S	-	-	-
Deluxe wheel covers with P205/65R15 BSW tires	P	-	-	-
Bright machined cast aluminum wheels with P205/65R15 BSW tires	-	P	S	-
Sparkle cast aluminum wheels with P205/65R15 BSW touring tires	O	-	-	-
Sparkle unidirectional cast aluminum wheels with P215/60ZR16 BSW high-performance tires	-	-	-	S

(1) Engine compartment light, dual courtesy lights under instrument panel, headlamps-on reminder chime, and dual beam reading and dome lights. (2) Variable power-assist speed-sensitive steering, paint stripe, dual visor mirrors, and driver-side secondary visor. (3) Rear window wiper/washer and cargo area cover. (4) Power moonroof and 6-way power driver and passenger seats. (5) Ford JBL Audio System, power moonroof, 6-way power driver and passenger seats, and remote keyless entry system. (6) Includes power-adjustable lumbar supports. (7) Requires High Level Audio System.

S = Standard O = Optional P = Preferred Equipment Package feature



Champagne Clearcoat Metallic (E, M)



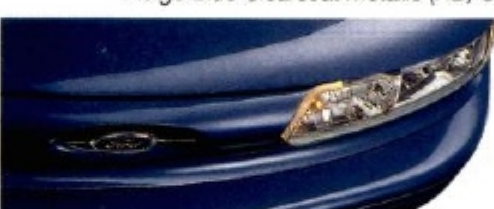
Electric Red Clearcoat Metallic (OG, M)



Light Evergreen Frost Clearcoat Metallic (E, OG, M)



Indigo Blue Clearcoat Metallic (RB, OG)



Moonlight Blue Clearcoat Metallic (RB, OG, M)



Deep Emerald Green Clearcoat Metallic (E, OG, M)



Midnight Green Clearcoat Metallic (E, OG, M)



Silver Frost Clearcoat Metallic (RB, E, OG)



Vibrant White Clearcoat (RB, E, OG, M)



Crimson Clearcoat—SHO only (OG, M)

Interior colors: Royal Blue (RB), Evergreen (E), Opal Grey (OG), Mocha (M)

Note: See your Ford Dealer about availability of colors for Taurus SE with optional decklid spoiler and for Taurus SHO.

## PREFERRED EQUIPMENT PACKAGES

	GL 203A	SE 204A	LX 205A	SHO 208A	SHO 211A
GROUP 1	S	S	S	S	S
Air conditioning, manual (electronic in SHO)					
Rear window defroster					
GROUP 2		●		●	S
Remote decklid/liftgate/fuel filler door releases (std. in LX)					
Power door locks and side windows (std. in LX)					
Light Group (std. in LX)					
Speed control					
Electronic AM/FM stereo radio/cassette (High Level Audio System in SHO)					
GROUP 2A			●		
Power door locks and side windows					
Electronic AM/FM stereo radio/cassette					
GROUP 3		●	●	S	
6-way power driver's seat (std. in SHO)					
Deluxe wheel covers (bright cast aluminum wheels std. on SE and LX)					
GROUP 3A			●		
Cloth and leather sport bucket seats					
Console/floor shift					
Bright machined cast aluminum wheels					
Crystalin headlamp lenses					
GROUP 4				●	
Leather-wrapped steering wheel (std. in SHO)					
Power antenna (std. in SHO)					
Remote keyless entry system (includes two transmitters)					
GROUP 5 (Wagon)				●	
Rear window wiper/washer					
Cargo area cover					
Floor mats, front and rear		●	●	●	S
GL/Equipment Group		●			
Load floor extension (wagon)				●	

● = Contained in Preferred Equipment Package S = Standard

## POWERTEAMS (GL, SE, LX)

Type	12-valve, single overhead valve V-6
Displacement	Std. 3.0-liter Opt. 3.8-liter (std. in LX wagon)
Horsepower (SAE net)	140 @ 4,800 rpm (3.0L); 140 @ 3,800 rpm (3.8L)
Torque (SAE net lb.-ft.)	165 @ 3,250 rpm (3.0L); 215 @ 2,200 rpm (3.8L)
Fuel system	Sequential electronic fuel injection
Transaxle	Electronic 4-speed automatic overdrive

## POWERTEAM, SHO

Type	24-valve, dual overhead cam V-6
Displacement	3.0-liter (182 cu. in.); 3.2L (195 cu. in.) with opt. automatic transaxle
Horsepower (SAE net)	220 @ 6,200 rpm (3.0L); 220 @ 6,000 rpm (3.2L)
Torque (SAE net lb.-ft.)	200 @ 4,800 rpm (3.0L); 215 @ 4,800 rpm (3.2L)
Fuel system	Sequential electronic fuel injection
Transaxles	Std. 5-speed manual overdrive Opt. electronic 4-speed automatic overdrive

## BODY/CHASSIS

Body type	Unitized
Front suspension	Independent strut-type with gas-pressurized hydraulic struts and stabilizer bar (special handling components on SHO)
Rear suspension (sedan)	Independent strut-type with gas-pressurized hydraulic struts and stabilizer bar (special handling components on SHO)
Rear suspension (wagon)	Independent "short/long arm" [SLA] type with gas-pressurized hydraulic shocks and stabilizer bar
Steering	Power rack-and-pinion (GL and SE) Speed-sensitive variable power (LX, SHO, and GL with package 204A)
Brakes	Std. power front disc/rear drum (GL, SE and LX) Opt. 4-wheel power disc with anti-lock system (std. in SHO)
Tires	P205/65R15 BSW (GL, SE and LX) P215/60ZR16 BSW Speed-Rated (SHO with manual transaxle) P215/60R16 94V BSW Touring (SHO with automatic transaxle)
Fuel capacity	16 gallons (extended-range 18.4-gal. tank with SHO)

## DIMENSIONS

	4-Door	Wagon
Wheelbase	106.0"	106.0"
Length	192.0"	193.1"
Height	54.1"	55.5"
Width	71.2"	71.2"
Front tread	61.6"	61.6"
Rear tread	60.5"	59.9"
Front head room	38.3"	38.6"
Rear head room	37.6"	38.1"
Front leg room	41.7"	41.7"
Rear leg room	37.7"	36.9"
Trunk/cargo volume (cu. ft.)	18.0	81.1*
Passenger capacity	6	6

\*Rear seat backs down; 38.2 cu. ft. rear seat backs up.

## PRODUCT CHANGES

Following publication of this catalog, certain changes in standard equipment, options, prices and the like, or product delays, may have occurred that would not be included. Your Ford Dealer is your best source for up-to-date information. Ford Division reserves the right to change product specifications at any time without incurring obligations.

## OPTIONS AVAILABILITY

Options shown or described are available at extra cost and may be offered only in combination with other options or subject to additional ordering requirements or limitations.

Right: The optional compact disc player provides superb clarity and includes a convenient random play feature.

Far right: The optional cellular telephone (available with split bench seat) features auto radio volume muting, 30-number memory storage, "hands-free" operation and convenient in-armrest, foldaway storage.

Wheel trim, left to right: wheel cover (GL); deluxe wheel cover (GL with Preferred Equipment Package 204A); optional sparkle cast aluminum wheel (GL); machined cast aluminum wheel (SE and LX); and unidirectional sparkle cast aluminum wheel (SHO).







Printed on recycled paper  
10% post-consumer waste



160-Ann. Litho in U.S.A. 8/94