

1996



Econoline RV Cutaway Chassis



*Class C motor home
chassis leader*

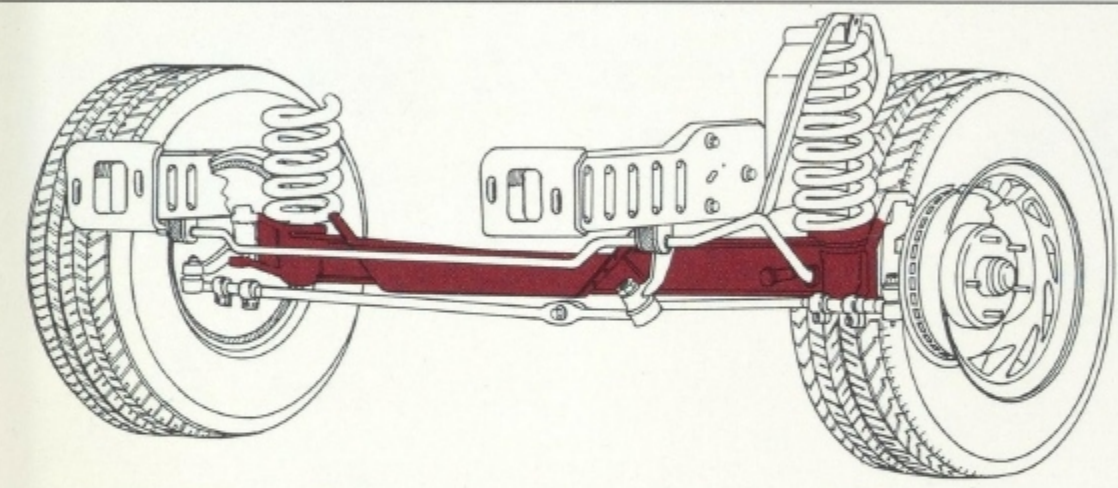
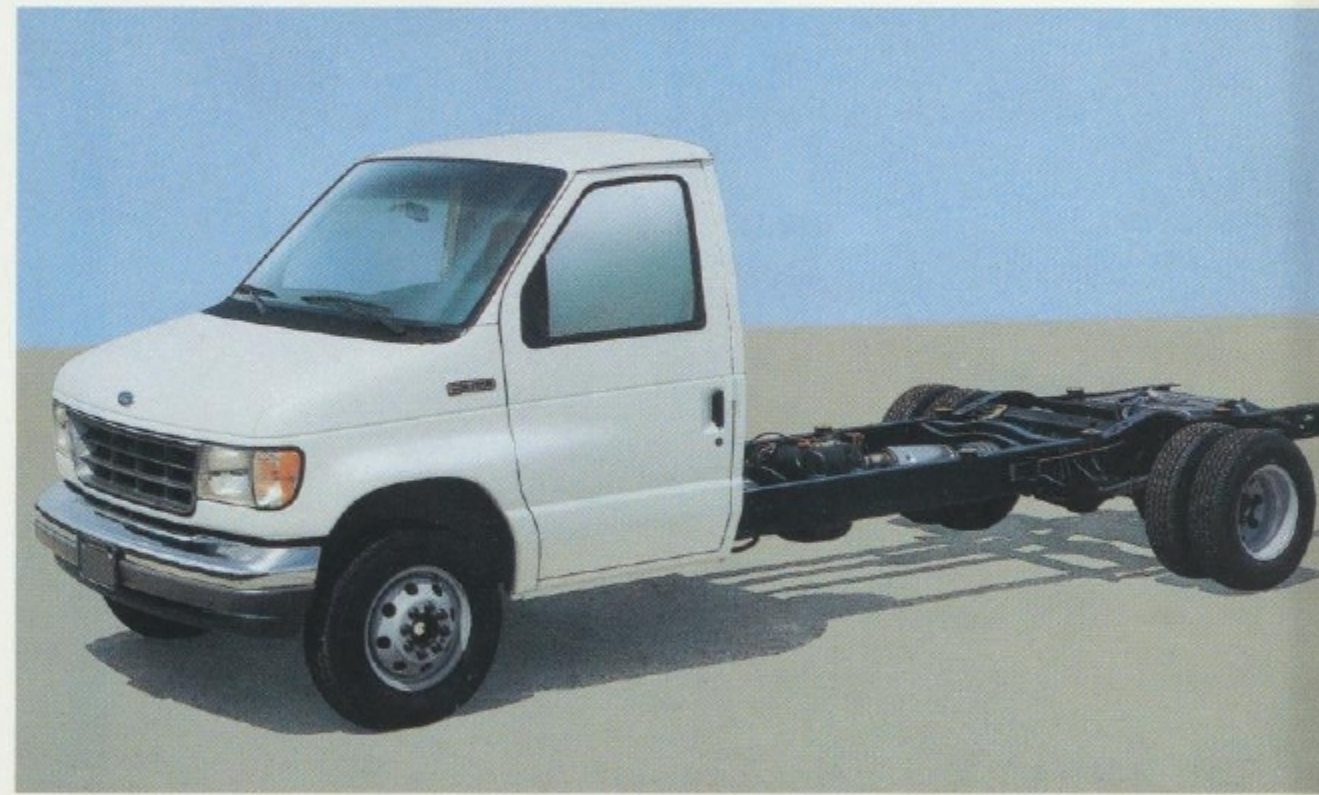
FORD — THE CLASS C MOTOR HOME CHASSIS LEADER*

The Ford Econoline RV Cutaway Chassis continues to be the overwhelming choice of Class C Motor Home Buyers.

Chassis Design Features

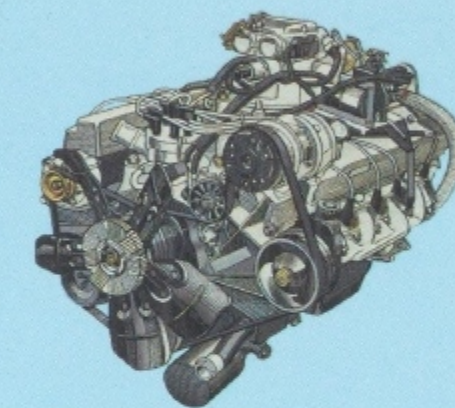
These key features of the Ford Econoline RV Cutaway Chassis make it the Class C Leader:

- Up to 11,500 lbs. GVWR and 20,000 lbs. GCWR.
- Wheelbases up to 176".
- Modern, Aerodynamic Styling.
- Out-Front Engine Design.
- Largest Gas and Diesel Engines in Class C Chassis.
- Optional 55-Gallon Fuel Capacity (158"/176" WB).
- Electronically Controlled, 4-Speed, Automatic Overdrive Transmission.
- Full-Frame Chassis.
- Twin-I-Beam Front Suspension.
- Driver Oriented Instrument Panel.
- Rear-Wheel Anti-Lock Brakes. (4-Wheel Anti-Lock – Opt.)



Twin-I-Beam Front Suspension System

- Provides Excellent Ride and Handling Characteristics.
- Features Adjustable Caster/Camber.
- Two, Independent Steel I-Beam Axles.
- Sturdy, Computer-Selected Coil Springs.
- Large Diameter, Gas-Pressurized Shock Absorbers.



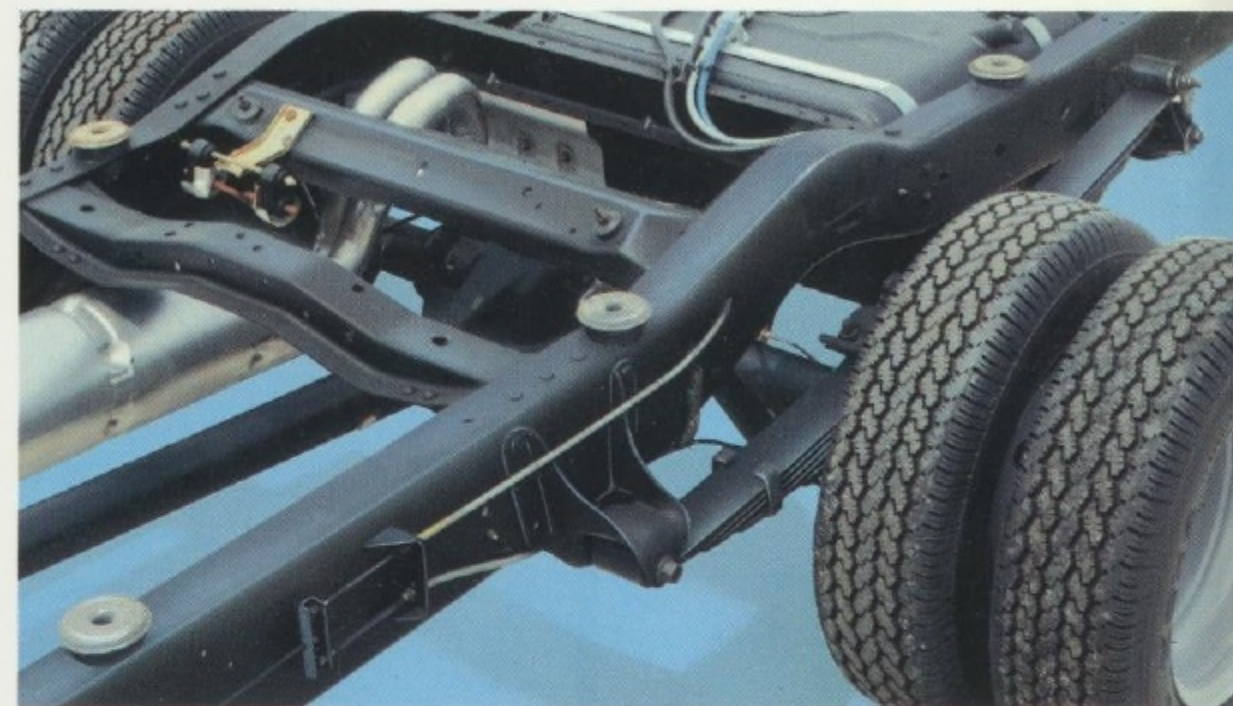
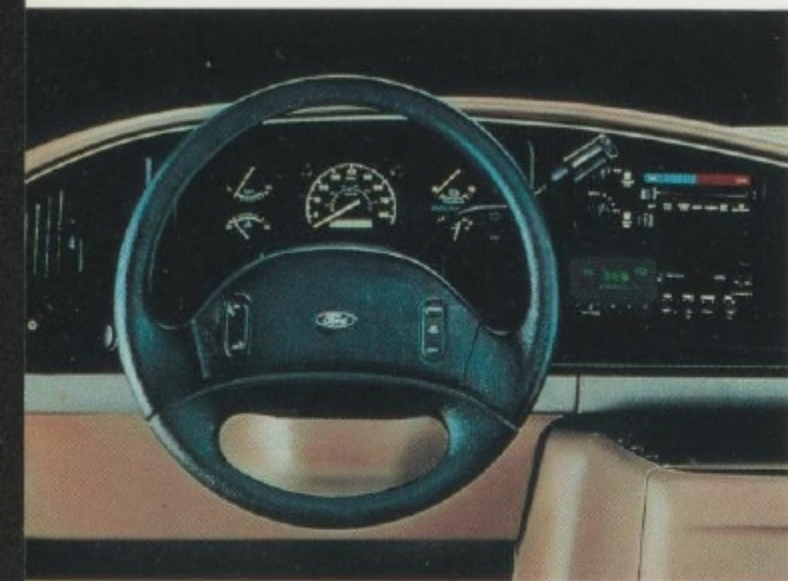
7.5L GASOLINE ENGINE



7.3L V-8 DIRECT INJECTION
TURBO DIESEL ENGINE

Powertrain Features

- Largest Gasoline and Diesel Engines Available In Class C Chassis:
 - 7.5 Liter (460 CID) EFI Gas V-8.
 - 7.3 Liter (444 CID) Direct Injection Turbo Diesel V-8
- Includes E4OD Electronically Controlled, 4-Speed Automatic Overdrive Transmission.
- 7.5L EFI Gas V-8 Provides 18,500 lbs. Maximum Gross Combined Weight Rating (GCWR).
 - Results in Maximum Trailer Towing Capacity of 7,000 lbs.
- 7.3L Direct Injection Turbo Diesel V-8 Provides 20,000 lbs. Maximum Gross Combined Weight Rating (GCWR).
 - Results in Maximum Trailer Towing Capacity of 8,500 lbs.



Driver-Friendly Interior

- Instrument Panel Design/Location Makes Everything Easy For Drivers To See and Reach.
- Driver and Passenger Seating Positions Provide "Command-of-the-Road" Viewing.
- Convenient Front Entry and Exit.
- Engine Positioned Well Forward In Chassis Results in Comfortable Leg Room and Convenient Access to the Rear.

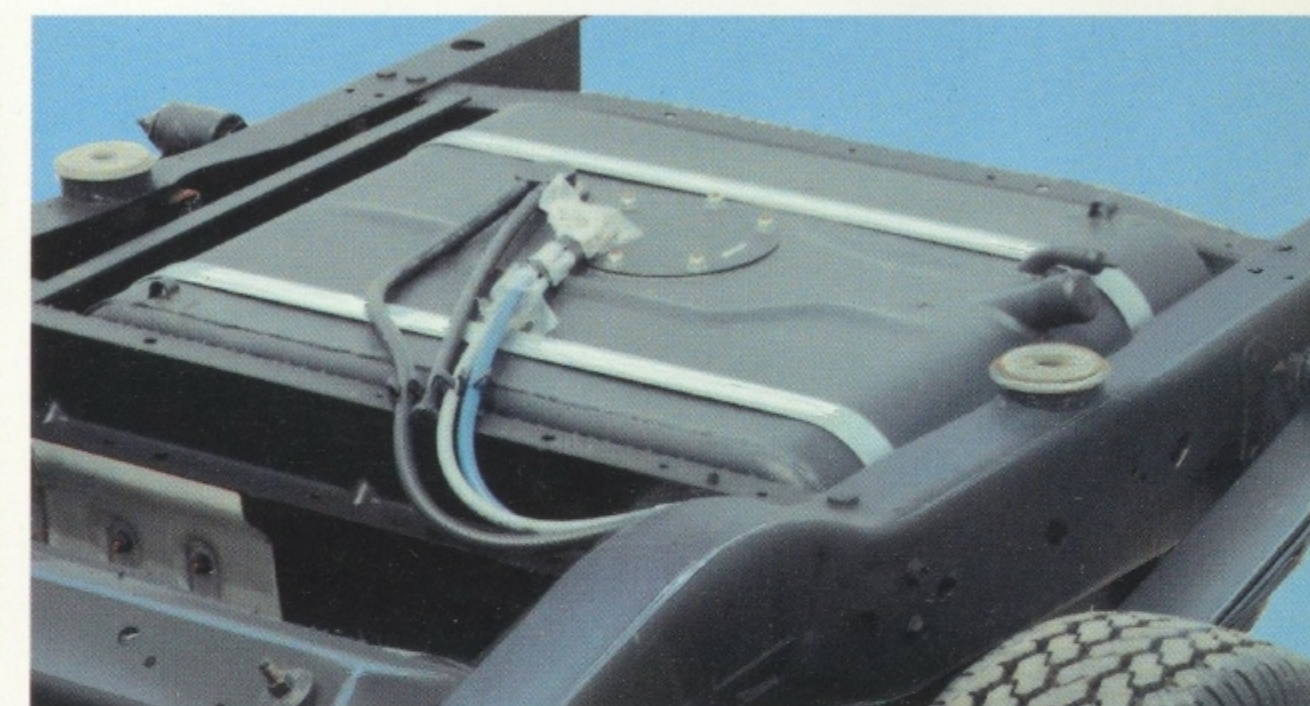
Full-Frame Chassis

- Rugged Design and Construction.
- Tough, Ladder-Type Truck Frame.
- Deep, Full-Length Steel Side Rails.
- Welded Crossmembers.
- Shock-Absorbing Body Mounts.



Out-Front Engine Design

- Provides Excellent Access to Engine Compartment.
- Oil Dip Stick, Oil Fill, Windshield Washer and Coolant Fill Reservoir are Easy to Reach.
- Facilitates Service Checks and Maintenance.
- Results In More Convenient Front Entry and Exit, Comfortable Leg Room and Convenient Access to the Rear.



55 Gallon Fuel Tank

- Optional 55-Gallon Fuel Tank Provides Extended Cruising Range and Fewer Stops Between Fill-Ups.
- Aft-Of-Axle Location Frees-Up Room for Side Storage Compartments.
- Mounted Inside Frame Rails.

* Based on Class C registrations for the 1995 calendar year.

Backed by a 3-year/36,000 mile warranty with no deductible

Ford's limited warranty covers all 1996 light trucks and all Ford components for 3 years or 36,000 miles, whichever comes first. And there is no deductible. See your dealer for details and ask for a copy of the warranty.

ALL FORD-POWERED MOTOR HOMES ARE BACKED BY SPECIAL SERVICE SUPPORT

To help assist with worry-free travel, Ford provides the following chassis and powertrain support for all Ford-based motor homes:

- More than 1,200 Ford Dealers across the country with factory-authorized technicians to serve your motor home chassis service needs.
- Nationwide Ford Parts and Service locations for quick parts availability.
- **Roadside Assistance**

This 24 Hour, seven-day-a-week hotline is a standard feature on all Ford Motor Home Chassis. Simply by calling 1-800-241-FORD (3673) motor home customers have access to:

- Flat Tire Repair.
- Jump Start For A Dead Battery.
- Fuel, If They Run Out.
- Locksmith Service, If Locked Out.
- Towing.

■ Ford Motor Home Owners Service Locator Hotline

(1-800-444-3311) provides 24-hour, 7-day-a-week assistance in contacting a dealership, arranging a service appointment and providing a dealership contact person name. Can also assist in locating towing service, if needed.

■ Customer Assistance

- The Ford U.S. Customer Assistance Center is available to motor home owners requiring technical support.
- Open 9 a.m. to 5 p.m. (EST), Monday through Friday.
- TOLL-FREE: 1-800-392-FORD (3673).

6/100 CORROSION PROTECTION

Sheet metal manufactured and installed by Ford is protected against rust-through for 6 years or 100,000 miles, whichever comes first.

Chassis Specifications

FORD E-350 RV CUTAWAY MODELS

WHEELBASE (in.)	138	158	176
GVW RATINGS (lbs.)	10,500	11,500	11,500
AXLE, FRONT (lbs.)	Twin-I-Beam 4,600		
AXLE, REAR (lbs.)	7,800 Full-floating	8,000 Full-Floating	
AXLE RATIO	4.10 (Std.) / 4.10LS (Opt.)		
BRAKES, SERVICE	Power, Self-Adjusting, Dual Piston, Cylindrical Pin, Slider Caliper Disc – Front Drum – Rear Anti-Lock		
ELECTRICAL–ALTERNATOR	95 Amp – 1425 Watt (Std.) 130 Amp – 1950 Watt (Opt. w/ Gas Engines; Std. w/ Diesel)		
–BATTERY (12 Volt)	72 Amp-Hr. – 650 CCA (Std. w/ Gas Engines) HD 84 Amp-Hr. & Auxiliary 60 Amp-Hr. – 1250 CCA (Opt. w/ Gas Engines) Dual 84 Amp-Hr. & 63 Amp-Hr. – 1450 CCA (Std. w/Diesel)		
ENGINE	5.8L (351 CID) Gas V-8 EFI (Std.) 7.5L (460 CID) Gas V-8 EFI (Opt.) 7.3L (444 CID) V-8 Direct Injection Turbo Diesel (Opt.)*		
FRAME	Single Channel 36,000 PSI 5.73 in. ³ Section Modulus		
FUEL TANK	35.0 Gallon Aft-of-Axle (Std.) / 55.0 Gallon Aft-of-Axle (Opt.)†		
SHOCK ABSORBERS	1-3/8" Gas-Filled, Front and Rear		
SPRINGS, FRONT COIL TYPE (lbs.)	3,400 (Std.)	3,900 (Std.)	
SPRINGS, REAR (lbs.)	Multi-Leaf/Single Stage 7,810 (Std.)		
STABILIZER BAR, FRONT	1" Diameter		
STEERING	Power		
TIRES	(6) LT225/75Rx16D (Std.) (6) LT225/75Rx16E (Opt.)		
WHEELS	(6) 16.0 x 6K; Dual Rear Wheels		
TRANSMISSION	4-Speed Automatic Overdrive E40D In-Tank Oil Cooler (Std.); Auxiliary Trans. Oil Cooler (Std.)		

* 7.3L V-8 Direct Injection Turbo Diesel with Limited Warranty of 5-years or 100,000 miles, whichever occurs first.

† Opt. on 158"/176" WB only.



Information for this publication was correct at the time at which the material was being prepared for printing. Specifications and availability shown are subject to change without notice and Ford Motor Company assumes no liability for such changes.