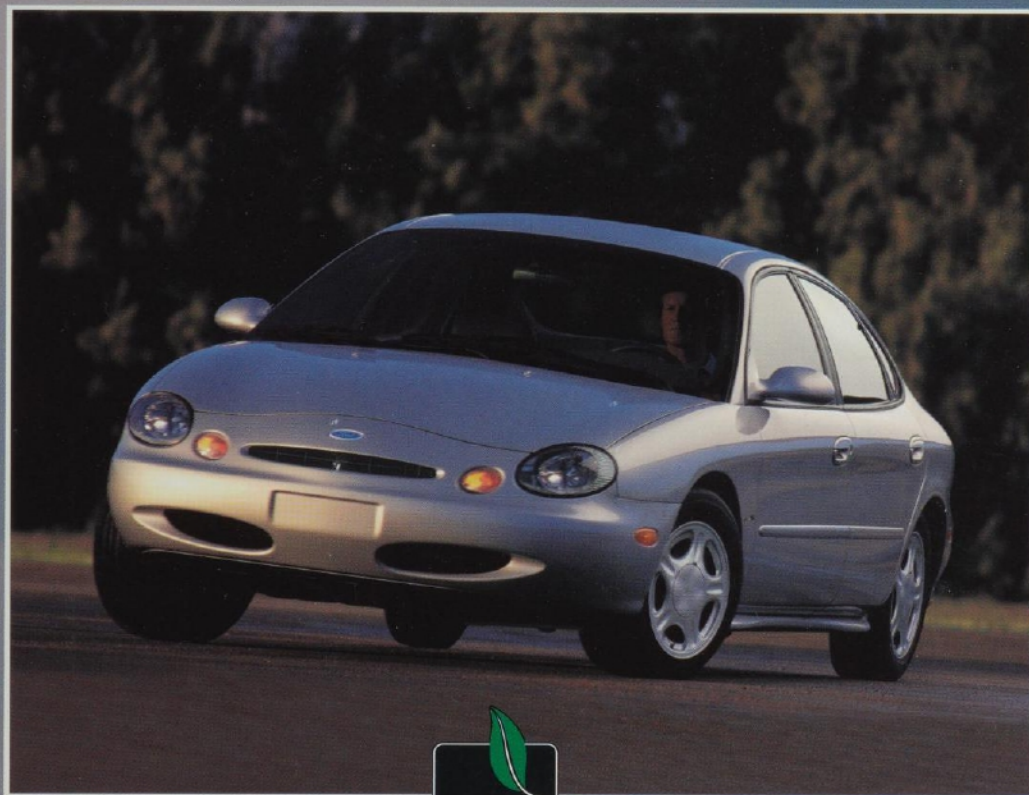




# TAURUS



Flexible Fuel Vehicle





# THE FLEXIBLE-FUEL TAURUS



## THE TAURUS FFV

The Taurus FFV (Flexible-Fuel Vehicle) is a prime example of Ford's strides in environmental quality and world leadership in the development of alternative-fuel vehicles. It's an advanced flexible-fuel vehicle that produces hydrocarbon emission levels well below those mandated by the present federal

*Below: Taurus Flexible-Fuel Vehicle shown in Moonlight Blue Clearcoat Metallic.*

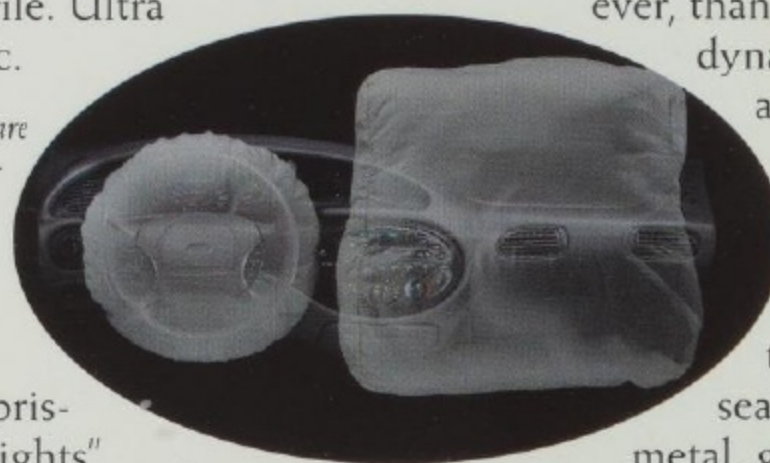
standards. This quality vehicle also meets the tough California Transitional Low Emissions Vehicle Standards. The Taurus FFV operates on methanol (M85), unleaded gasoline alone, or any combination of the two (an ethanol [E85] Taurus is also available). A special fuel sensor monitors the fuel mixture and sends information to the onboard computer, which adjusts the flow of the fuel and the spark timing to

help optimize performance. It's all automatic and hassle free for the driver.

## TAURUS DESIGN

An acknowledged industry design leader since its introduction, Taurus is one of the most successful nameplates ever. But because the Ford philosophy is continuous improvement, the new Taurus has changed from top to bottom, end to end, setting a new design standard for years to come. The all-new Taurus is engineered to be safe. Quiet. Responsive and aerodynamic. Agile. Ultra ergonomic.

*Dual air bags are standard equipment. Please remember to always wear safety belts.*



With "surprises and delights" and industry firsts that you won't find on automobiles cost-

ing thousands more, like a patented 3-way flip-up center console and an integrated control panel.

Geometrically, the shape suggests a symphony of ovals. Aerodynamically, it represents advanced thinking, and has the sleek appearance to match. Ergonomically, it's user friendly and pleasant to the touch. Functionally, it sets new, higher standards for mid-size sedans and wagons.

## INTERIOR QUIET

This is the quietest Taurus ever, thanks to its aerodynamic shape and significant sound insulation measures, including triple door seals. Sheet metal, glass and trim panels are designed to fit more precisely to minimize wind

noise. And engine noise has been greatly reduced.

## SAFETY

A new level of safety has been achieved by means of a safety cell structural design. As part of it, special "crumple zones" are designed to help absorb the impact in the event of a collision. In addition, dual air bags are provided as standard equip-



ment (remember, always wear your safety belts).

A new level of performance has also been achieved. The advanced Quadralink rear and MacPherson front suspensions combine for improved ride, handling and control. The more rigid chassis promotes a smooth ride with tighter handling capability.



The stopping power of front disc brakes is standard. A 4-wheel-disc, anti-lock braking system is available.

And a speed-sensitive steering system delivers the appropriate amount of power assist depending on whether the car is traveling at high or low speeds.



*Above: Harmony of design extends to Taurus instrumentation. The integrated control panel, an industry first, combines climate and audio controls into one user-friendly unit.*

*(A) The patented 3-way flip-up center console is an example of ergonomic design at its best.*

*(B) The optional voice-activated cellular phone helps keep you in touch with hands-free convenience.*

*(C) Standard heated side mirrors help clear ice or snow for a better view of what's behind.*

*Below: The Taurus interior is cloth upholstered and shown here in Saddle. Some equipment shown on these pages may be optional.*







356 Ann. Litho in U.S.A. 2/96



Printed on recycled paper  
10% post-consumer waste

