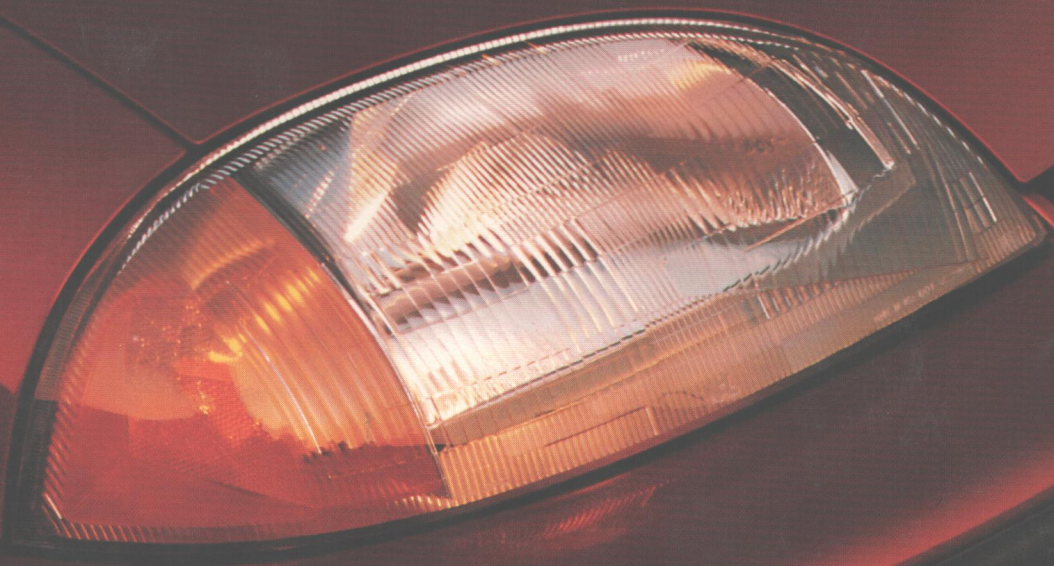


1996 GEO Metro



1996 GEO Metro.

A very smart car.

Many people are attracted to Geo Metro for very smart, practical reasons. There is the safety package that includes dual air bags and a safety cage construction that helps maintain the integrity of the passenger compartment during an impact. There is the extremely frugal fuel economy - Metro Coupe consumes an estimated 5.4 L/100 km (52 mpg) in the city and 4.3 L/100 km (66 mpg) on the highway*. And of course there is the highly affordable price tag. There are even two different shapes - Coupe and Sedan, to suit your needs. But perhaps the most basic reason for choosing a Metro is best expressed by its exuberant personality. It's based on the idea that affordable transportation doesn't have to be a yawn. That just might be the smartest reason for driving a Metro.

*Estimates based on Transport Canada approved testing methods, equipped with the 1.0L engine.



GEO Metro Coupe

It's two cars in one.

Geo Metro Coupe has a split personality. It is a sporty, nimble coupe that's perfect for scooting around town, across town, or across the country. It's even dressed up with sporty body-coloured bumpers. At the same time, it's one of the most fuel efficient cars on the road with ratings of 5.4 L/100 km (52 mpg) city and 4.3 L/100 km (66 mpg) highway*.

With the rear seat up, Metro Coupe offers plenty of head and leg room for four passengers. Fold up the rear seat and you've got a flashy hatchback with tons of room for whatever nifty stuff you like to haul around with you.

You can even spice things up with the optional 1.3L 4-cylinder engine.

No matter which way you look at Metro Coupe, its accessible price can't help but make you look good.

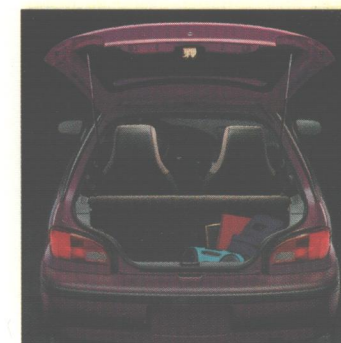
*Estimates based on Transport Canada approved testing methods, equipped with the 1.0L engine.

Geo Metro Coupe, shown in Woodland Green Metallic.

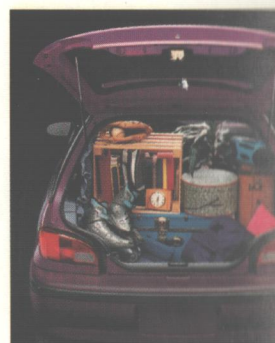


Metro Coupe's wide-opening rear hatch is easy to load or unload.

With the rear seat up, Metro Coupe seats four passengers and carries lots of good stuff with 238 L (8.4 cu. ft.) of cargo.



Folding the rear seat down gives you 636 L (22.5 cu. ft.) of cargo space. Bumper-level loading adds convenience.



GEO Metro Sedan

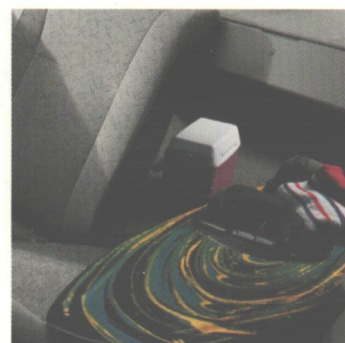
Adding two doors takes away none of its personality.

Just because you like the convenience of four doors doesn't mean you have to accept a car destined for Dullsville. Geo Metro Sedan is designed for people who want something more out of a car than room for four passengers and ample trunk space. Even before you get inside Metro Sedan, that's pretty clear. Its styling is anything but boring. In fact, aero-style composite headlamps and body-coloured bumpers give it a bolder appearance than most cars in its class.

When you're behind the wheel, you'll realize that it's not only the styling that has flair. The standard 1.3L 4-cylinder engine gives you all you need for passing and manoeuvring. And the advanced 4-wheel independent suspension provides a smooth and stable ride.

Sure, Metro Sedan gives you those sensible features like standard dual air bags and optional anti-lock brakes. But this car goes further – with built-in flair that appeals to your senses, not just your common sense.

*Geo Metro LSi Sedan,
shown in Silver Sage Metallic.*



Convenient split-folding rear seatbacks are standard on the LSi Sedan. Other Metro models feature a full-folding rear seatback.



In-door storage bins are standard on all models. Great for storing things like maps and sunglasses.



A standard slide-out cupholder holds two beverage cans and is conveniently located on the centre console.

GEO Metro Interior

Lots of room. Plenty of vroom.

The first thing you'll notice inside Metro is the room - a surprising amount of room that easily seats four big guys. In the Sedan, wide-opening rear doors make Metro as easy to get in and out of as it is to travel in. In the Coupe, the passenger front seat has a slide-forward feature that provides easy access to the rear seat. Other convenient features include a standard centre console with a built-in storage compartment and dual cupholders, as well as storage bins in the front doors. There is even the nifty touch of a headlamps-on reminder tone.

Metro is designed with the belief that an economical car doesn't have to look and feel economical when you're behind the wheel. Grab hold of Metro's 4-spoke steering wheel. All other controls are just as responsive to the touch.

When you drive a Metro, you'll immediately realize that its personality isn't left at the curb. If a little vroom is as important to you as room, Metro is the car for you.



Geo Metro's interior features a centre console for convenient storage. A standard cupholder adds to the convenience.



All cloth seats are treated with Scotchgard® Fabric Protector for soil resistance and easy cleanup.



Metro's instrument panel features easy-to-read analogue gauges and rotary dial climate controls.

Met
interior fea
front bu
integral h

GEO Metro Engineering

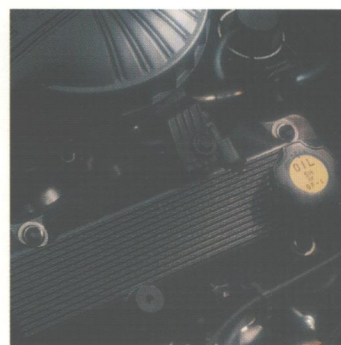
Metro's Advanced Technology and Safety. We've got you surrounded.

We know that nothing is more important to you than safety. That's why Metro goes beyond dual air bags and optional anti-lock brakes (ABS). Safety is built right into every Metro, with safety cage construction that helps maintain the integrity of the passenger compartment. Side-guard door beams and energy-absorbing front and rear body structures complete the safety envelope. Child-safety rear door locks on Sedans, when engaged, prevent rear doors from being opened from the inside.

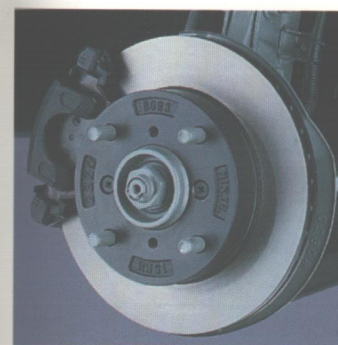
Metro is also built to last, with durability features such as a stainless-steel muffler and pipe that are designed to last longer than conventional components. The extensive use of galvanized steel helps protect against body rust-through. In fact, Metro is guaranteed against outer-body rust-through for six years or 100,000 km.



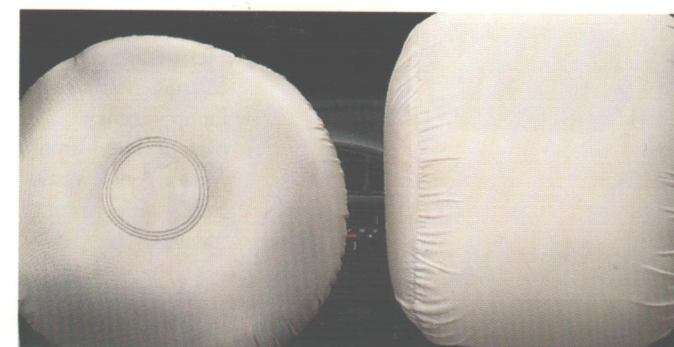
A rigid steel safety cage surrounds Metro's entire passenger compartment. Cross-car beams in the instrument panel, floor and rear compartment help absorb the energy of a side impact.



The 70-hp 1.3L 4-cylinder engine is standard on Metro Sedans and optional on Metro Coupes. A 1.0L 3-cylinder engine is standard on Metro Coupes.



An optional 4-wheel anti-lock braking system (ABS) reduces wheel lockup during severe braking. It is designed to help you maintain steering control, even on most slippery surfaces.



Standard driver and front passenger air bags can help protect occupants in the event of a moderate to severe front collision. Air bags complement the protection provided by the safety belts. Please remember always wear safety belts every time you get into a vehicle equipped with air bags.



Metro LSi Coupe, base Coupe not shown.



Metro LSi Sedan, base Sedan not shown.

ENGINES

Type (Coupe)	1.0L L3 with TBI
Horsepower	55 @ 5700 rpm
Torque	58 @ 3300 rpm
Type (Coupe, Sedan)	1.3L L4 with TBI
Horsepower	70 @ 5500 rpm
Torque	74 @ 3000 rpm

TOWING

Trailer towing is not recommended with Metro.

DIMENSIONS, MM (IN.)	COUPE	SEDAN
Wheelbase	2365 (93.1)	2365 (93.1)
Length	3795 (149.4)	4165 (164.0)
Width	1590 (62.6)	1590 (62.6)
Height	1390 (54.7)	1407 (55.4)
Front tread	1385 (54.5)	1385 (54.5)
Rear tread	1360 (53.5)	1360 (53.5)

INTERIOR, MM (IN.) FRONT/REAR		
Head room	993/915 (39.1/36.0)	999/948 (39.3/37.3)
Leg room	1079/819 (42.5/32.2)	1079/819 (42.5/32.2)
Shoulder room	1242/1242 (48.9/48.9)	1245/1227 (49.0/48.3)
Hip room	1199/1115 (47.2/43.9)	1205/1090 (47.4/42.9)

CAPACITIES/WEIGHT

Luggage, rear seat up, L (cu. ft.)	238 (8.4)	292 (10.3)
Luggage, rear seat down, L (cu. ft.)	636 (22.5)	NA
Fuel tank, L (gal.)	40 (8.8)	40 (8.8)
Curb weight (estimated), kg (lb.)	831 (1832)	890 (1962)

GEO Metro Specifications

STANDARD AND OPTIONAL EQUIPMENT

	3 Door Coupe	LSi 3 Door Coupe	4 Door Sedan	LSi 4 Door Sedan
SAFETY AND SECURITY				
Air bags – driver and front passenger	S	S	S	S
Brake/transmission shift interlock feature (automatic transmission only)	S	S	S	S
Door locks – rear door, child-security	–	–	S	S
Headlamps – Daytime Running Lamps with instrument panel indicator	S	S	S	S

MECHANICAL

Battery – Delco Freedom II	S	S	S	S
Brakes – power, front disc/rear drum	S	S	S	S
Drive – front-wheel	S	S	S	S
Engine – 1.0 litre L3 with TBI	S	S	–	–
Engine – 1.3 litre L4 with TBI	O	O	S	S
Exhaust system – stainless steel*	S	S	S	S
Steering – manual, rack-and-pinion	S	S	S	S
Suspension – 4-wheel independent	S	S	S	S
Transmission – 5-speed manual with overdrive	S	S	S	S

*Muffler and tailpipe only.

EXTERIOR

Bumpers – painted body-colour				
with graphite gray rub strips	S	S	S	S
Glass – tinted	S	S	S	S
Headlamps – composite halogen (flash-to-pass)	S	S	S	S
Mirrors – dual, left remote, right manual	S	S	S	–
Mirrors – dual, left and right remote	O	O	O	S
Mouldings – bodyside, graphite gray	O	S	S	S
Tires – P155/80R13 all-season blackwall	S	S	S	S
Wheels – 13" x 4.5" steel with full wheel covers, 3-spoke	S	–	S	–
Wheels – 13" x 4.5" steel with full wheel covers, 7-spoke	–	S	–	S

INTERIOR

Console – front floor with storage tray	S	S	S	S
Defogger – electric rear-window	S	S	S	S
Fabric – Scotchgard™ Protector	S	S	S	S
Hatch/trunk release – remote	O	O	S	S
Head restraints – front seat, integral	S	S	S	S
Instrumentation – analogue cluster (includes speedometer, coolant temperature and fuel gauges)	S	S	S	S
Instrumentation – trip odometer	O	S	S	S
Lamp – trunk	–	–	–	S
Map pockets – front door	S	S	S	S
Mirror – visor vanity, passenger	–	S	S	S
Seat – front passenger "easy-entry" feature	S	S	–	–

INTERIOR (CONTINUED)

	3 Door Coupe	LSi 3 Door Coupe	4 Door Sedan	LSi 4 Door Sedan
Seats – cloth high-back reclining bucket seats	S	–	S	–
Seats – custom cloth high-back reclining bucket seats	–	S	–	S
Seats – full-folding rear seatback	S	S	S	–
Seats – split-folding rear seatbacks with pass-through	–	–	–	S
Windshield wipers – 2-speed with fixed delay	–	S	S	S

PREFERRED EQUIPMENT

GROUP PACKAGES	3 Door Coupes 1SB/1SD
Floor mats – front and rear	■
Hatch release – remote	■
Mirrors – dual, left and right remote (LSi only)	■
Security cover – cargo	■
Wiper/washer – rear window	■

ADDITIONAL

INDIVIDUAL OPTIONS	Coupe	Sedan
Air conditioning – manual (with CFC-free refrigerant)	O	O
Brakes – anti-lock braking system (ABS), 4-wheel	O	O
Door locks – power	–	O
Engine – 1.3 litre L4 with TBI	O	S
Floor mats – front and rear, carpeted	O	O
Instrumentation – tachometer	O*	O
Mirrors – dual, left and right remote (base Coupe and Sedan)	O	O
Mouldings – bodyside, graphite gray (base Coupe)	O	S
Radio – Delco AM/FM stereo, seek up/down, clock and 4-speaker sound system	O	O
Radio – Delco AM/FM stereo, seek up/down, program scan, auto-reverse cassette tape player, clock and 4-speaker sound system	O	O
Radio – Delco AM/FM stereo, seek up/down, program scan, auto-reverse cassette tape and compact disc players, clock with 4-speaker sound system	O	O
Steering – power, rack-and-pinion	–	O
Transmission – 3-speed automatic	O†	O

* Includes trip odometer on Hatchback Coupe.

† Requires 1.3L L4 engine.

Exterior Colours

16 – White



18 – Silver Sage Metallic



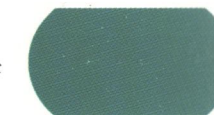
19 – Black Licorice



32 – Scuba Blue Metallic



38 – Slate Green Metallic



43 – Woodland Green Metallic



74 – Wildfire Red



75 – Brilliant Red Metallic



84 – Super Grape Metallic





GEO and You

When you buy a new Geo, you get more than a great vehicle. You also begin a special relationship with General Motors of Canada as a Geo customer. Your satisfaction is extremely important to us, and we're committed to ensuring that you enjoy all the value we build into these fine vehicles. The programs described on this page are all part of that commitment.



Every new GM car and truck is backed by the GM TOTAL™ Warranty (3 years/60,000 km, whichever comes first) which covers complete vehicle repairs, including parts and labour, to correct any defects in material or workmanship occurring during the warranty period. The GM TOTAL™ Warranty requires no deductible. Tires are included. Warranty features include towing, no-cost warranty transfer, and 6-year/160,000 km (whichever comes first) corrosion protection coverage and 8-year/130,000 km (whichever comes first) coverage on catalytic converters and powertrain control modules (PCM). Regular maintenance is not included. See your dealer for terms of this limited warranty.



When you drive away in your new 1996 GM car or truck, the security and convenience of round-the-clock Roadside Assistance is available via a toll-free number useable anywhere in Canada or the United States. During the warranty period, whenever a problem may occur, your Roadside Service Advisor is just a phone call away. Whether it's lock-out assistance, a jump start, a flat tire change, fuel delivery or towing assistance, simply call 1-800-268-6800 and we'll be there to get you on the road again without charge.



Your GM dealer will offer courtesy transportation while your 1996 GM vehicle is serviced at your GM dealership for repairs covered under the 3 year/60,000-km GM TOTAL™ Warranty. See your GM dealer for full details. (Includes public transportation or shuttle service for same-day repairs and loaner or rental service for overnight repairs.)



GMAC Financing. General Motors Acceptance Corporation (GMAC for short) is a General Motors division that was created specifically to help GM customers like yourself to finance their new vehicles. You can arrange GMAC financing right in your GM dealer's showroom, and the terms of your arrangement can be tailored to fit your particular needs. It's a convenient, flexible alternative to a conventional bank loan.



GM SMARTLEASE is simply an alternative to traditional financing. SMARTLEASE lets qualified customers pay for the portion of the vehicle that is used, rather than paying for the entire vehicle as you would with traditional financing. Consider these SMARTLEASE benefits: Low up-front costs, affordable monthly payments, drive more vehicle for your money, drive a new car more often, limited maintenance and repair expense, no resale risks or trade-in hassles and a guaranteed option-to-purchase price when your lease ends. Most important, there are no surprises with SMARTLEASE. Leasing doesn't have to be a mystery. See your dealer about the benefits of SMARTLEASE. Or call 1-800-32-SMART.



Turn your dream into a reality.

With the GM Visa® Card, your dream of owning a new GM car or truck can quickly become a reality. Every time you make a purchase using the GM Visa Card, you earn 5% of that purchase which you can apply to the purchase price or lease down payment on your next new GM car or truck. Earn

up to \$3500 without having to do anything other than charge your usual purchases to your GM Card.

Plus, when you make a purchase with your GM Visa Card at any one of the GM Card Partners, you earn an additional 5%. And there's no limit to how much you can earn with the Partners.

What's more, it's the only Visa card in Canada with no annual fee. To receive an application or for full terms and conditions, please see your local GM Dealer, TD Branch or call: 1-800-461-3279.

Up to \$500 per Cardholder Year or maximum of \$3500 over 7 years. Subject to GM Card Program Rules.

* TD and GM are licensed users of Marks.



If you or your passenger(s) have a physical disability which prevents you from driving or riding in a factory-equipped vehicle, find out about the GM Mobility Program for Persons with Disabilities. You may be eligible for reimbursement of up to \$1000 (GST included) for adaptive equipment you may require for your 1996 GM vehicle. Your GM dealer can also set up complete GMAC financing for you. Beyond that, your GM dealer can provide you with lists of qualified driver assessment centres and mobility equipment installers. Call this toll-free number for more information: 1-800-GM-DRIVE (TDD users, 1-800-263-3830).



Get \$750 off. If you're a recent graduate from a recognized college or university, you may qualify for an additional \$750 off on the purchase or lease down payment of the GM vehicle of your choice. Anyone graduating from a university degree program, a 2-year college program or a 3-year CEGEP D.E.C. (Technique) program between May 1, 1993 and December 31, 1996 can take part. To get credit for your degree, see your GM dealer for full details.



GMPP coverage provides you with "Peace of Mind" protection from repair costs (parts and labour), as well as many associated expenses that may occur to your vehicle beyond the GM TOTAL™ Warranty period. Whether you're purchasing or leasing your GM vehicle, there's a GMPP coverage level and plan term to suit your budget and driving needs. Be sure to ask your GM dealer about the many benefits you receive through your purchase of the General Motors Protection Plan only Extended Service Plan backed by the resources and commitment of General Motors.



The expert choice.

Warranty coverage for dealer-installed GM Accessories.



Buying a new vehicle is one of the most important decisions you can make. Naturally, you want to get the best possible value from your purchase. That's why regular maintenance is essential. Not only does it help your vehicle run better, it also enhances your resale or trade-in value. So you end up getting the most fuel economy and a greater return on your investment.

Fitting routine maintenance into your busy schedule can be difficult. Now, GM Goodwrench Service Plus makes it easier, providing complete one-stop shopping for your routine maintenance needs. Everything from lube, oil and filter to exhaust, shocks and struts to tire rotation. All at one convenient location, with GM trained technicians who really know your GM vehicle and how to do the job right upfront, competitive prices.

Wherever you see the GM Goodwrench Service Plus sign, it's your guarantee of best quality work at a competitive price. We invite you to discover GM Goodwrench Service Plus - Expert Service and Honest Prices. GM Goodwrench Service Plus is available at authorized participating GM dealers.



It's good to know, when you travel long distances, that there are hundreds of GM dealers in Canada, each one ready to provide you with professional service and genuine GM products. You can phone the GM Customer Communication Centre toll-free at 1-800-263-3777 (English) or 1-800-263-7854 (French) (TDD users, 1-800-263-3830) to talk with trained experts regarding any General Motors product service problem you may have. The centre is open Monday through Friday, 7:30 a.m. to 11:30 p.m., EST.

A Word About This Brochure

We have tried to make this brochure as comprehensive and factual as possible. We reserve the right, however, to make changes at any time, without notice, in prices, colours, materials, equipment, specifications, models and availability. Since some information may have been updated since the time of printing, please check with your Chevrolet/Geo dealer for complete details.

A Word About Engines

Geos are equipped with engines produced by different operating units of GM, its subsidiaries or suppliers to GM worldwide.

A Word About Assembly

Geos are assembled by different operating units of General Motors, its subsidiaries or suppliers to GM worldwide. Geos incorporate thousands of components produced by different operating units of GM, its subsidiaries or suppliers to GM worldwide. We sometimes find it necessary to produce Geos with different or differently sourced components than originally scheduled. All such components have been approved for use in Geos and will provide the same performance associated with the Geo name. Since some options may be unavailable when your vehicle is assembled, we suggest that you verify that your vehicle includes the equipment you ordered, or if there are changes, that are acceptable to you.

A Word About Corrosion Protection

Geos are designed and built to resist corrosion. All body sheet metal components are warranted against rust-through corrosion for 6 years/160,000 kilometres. Application of additional rust-inhibiting materials is not required under the corrosion coverage and none is recommended.

Note: Instruments shown throughout this brochure are metric in Canada.

Vehicles in Canada are equipped with Daytime Running Lamps.

General Motors, GM, the GM emblem, Geo, the Geo grille emblem, Metro and the TOTAL Warranty are trademarks of the General Motors Corporation and/or General Motors of Canada Limited. GMAC and SMART are trademarks of the General Motors Acceptance Corporation. Scotchgard is a trademark of the 3M Corporation. Printed in Canada, August 1995. © General Motors of Canada Limited.



120-6-A-005E