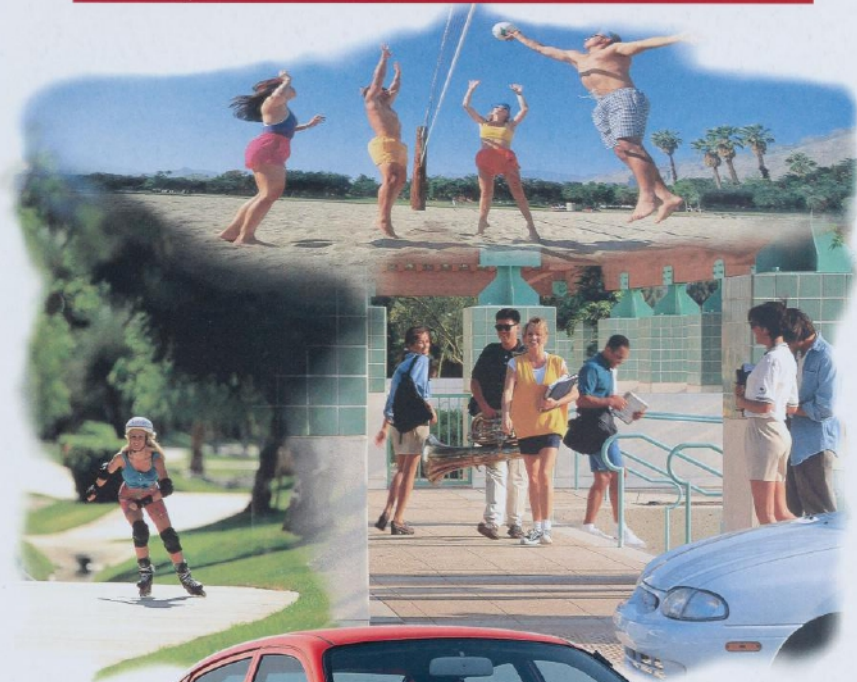




1 9 9 7

ASPIRE



Terrific fuel economy



Inexpensive to own and operate



Standard dual air bags



Left: Aspire 3-Door in Crystal White. Below: Aspire 5-Door in Bright Sapphire Clearcoat.



THE SMALL CAR THAT FITS SO MANY LIVES



34 mpg
in the city
42 mpg &
highway*

Aspire fits nicely into many lifestyles and most any budget. First car, second car, third car — it offers compelling proof that comfort and versatility can be affordable. Available in 3-Door and 5-Door bodystyles, the surprisingly

roomy Aspire gets great gas mileage, features standard dual air bags (always wear safety belts) and offers an optional anti-lock braking system.

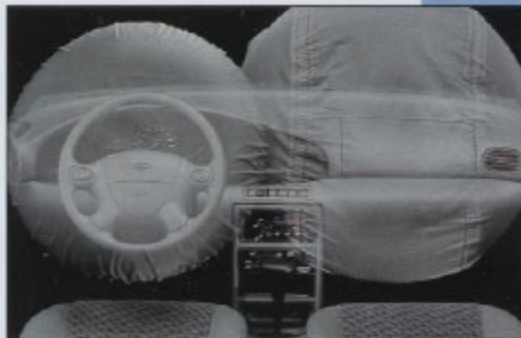
*EPA estimates with manual transaxle.

Available anti-lock brakes



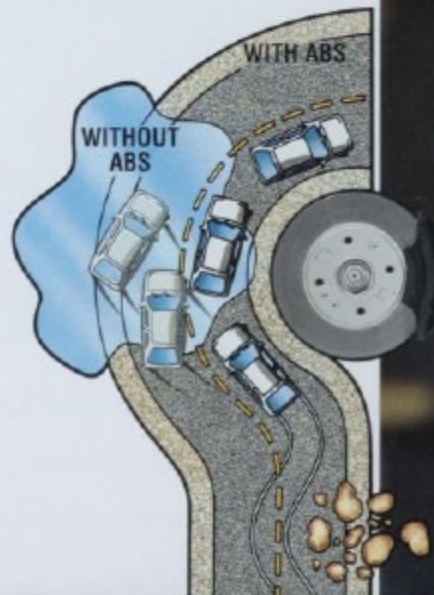
Surprisingly roomy interior

Fun to drive



Aspire was the first in its class to provide standard driver and front passenger air bags to supplement the safety belts.

Aspire was the first in its class to offer optional 4-wheel anti-lock brakes. They provide greater steering control while braking under most driving conditions, even on wet or slippery surfaces.



DESIGNED FOR COMFORT AND SAFETY



Aspire's ergonomically efficient interior is shown here with the optional Interior Decor and Convenience Group. It includes versatile split seat backs which can be configured as shown below.



One seat can be folded forward to allow for oversized cargo and a passenger...



...or both of the seats can be folded down to make space when cargo takes precedence.



Even with the rear seat(s) up, there's 17.0 cu. ft. of space in back (14.9 in the 3-door).



For a subcompact car,
the fun-to-drive Aspire
is big on standard
equipment.

Specifications

ENGINE	
Type	In-line 4-cylinder
Valves	8
Displacement	1.3L (80.7 cu. in.)
Horsepower (SAE net)	63 @ 5,000 rpm
Torque (SAE net lb.-ft.)	74 @ 3,000 rpm
Fuel system	Multiple-port electronic fuel injection
TRANSAXLE	
Type	5-speed manual overdrive; 3-speed automatic transaxle optional
CHASSIS	
Body type	Unitized
Front suspension	Independent MacPherson strut-type with strut-mounted coil springs, track control arm and stabilizer bar
Rear suspension	Torsion-beam-type with strut-mounted coil springs
Steering	Manual rack-and-pinion, 22:1 ratio
Brakes	Power front disc/rear drum; anti-lock system optional
Tires	P165/70R13 BSW all-season
Fuel capacity	10 gallons



Warranty

Like all Ford cars, Aspire's 3-year,
36,000-mile bumper-to-bumper
warranty includes the benefit of
complimentary 24-hour emergency
roadside assistance (see right).

S = Standard O = Optional

EXTERIOR FEATURES

Body-color front and rear bumpers and rub strips integrated with grille	S
Aerodynamic halogen headlamps	S
Dual foldaway remote-control outside mirrors	S
Color-keyed bodyside protection moldings	S
Monochromatic styling theme	S
13" styled steel wheels with full argent wheel covers	S
Blackout treatment on windshield wipers, windshield and rear window moldings and door handles	S

SAFETY

Air bag supplemental restraint system for the driver and front passenger; manual 3-point front and rear seat lap/shoulder belts	S
Dynamic side impact protection	S
Anti-lock braking system	O

COMFORT AND CONVENIENCE

Color-keyed molded door trim with integral armrests	S
Side window demisters	S
Fuel and water temperature gauges and trip odometer	S
Two-speed windshield wipers	S
Inside hood release	S
Day/night inside rearview mirror	S
Glove box	S
Color-keyed, full-length console with dual cup holders and open storage area	S
Courtesy lamps	S
Dual rear coat hooks	S
Color-keyed carpeting on floor and in luggage compartment	S
Color-keyed luggage compartment with molded side trim	S
Soft-feel shift knob	S
Cigarette lighter	S
Front ashtray	S
Air conditioning (a CFC-free system); includes tinted glass	O

Interior Decor and Convenience Group (includes interval windshield wipers, package tray cover and cargo light, premium cloth and vinyl seats, split/fold rear seats, front door map pockets, cloth door trim inserts, remote hatch release and driver's visor vanity mirror with cover)	O
---	---

SEATING

Front cloth and vinyl high-back reclining bucket seats	S
Full-fold bench-type rear seat	S

FUNCTIONAL

Maintenance-free battery	S
5-speed manual overdrive transaxle	S
Automatic transaxle	O
Power steering (5-door with automatic transaxle only)	O
Rear window defroster	O

SOUND SYSTEMS

Radio preparation package (includes antenna cable and wiring for 4 speakers)	S
Electronic AM/FM stereo radio with clock	O
Electronic AM/FM stereo radio with cassette player, clock, removable security bezel	O

Aspire Colors



Beige
Clearcoat
Metallic



Hot Red



Red
Clearcoat
Metallic



Bright
Sapphire
Clearcoat



Lapis Blue
Clearcoat
Metallic



Pacific Green
Clearcoat
Metallic



Crystal
White

Interior Trim Color Medium Dark Graphite

Exterior Paint Colors

Beige Clearcoat Metallic	•
Hot Red	•
Red Clearcoat Metallic	•
Bright Sapphire Clearcoat	•
Lapis Blue Clearcoat Metallic	•
Pacific Green Clearcoat Metallic	•
Crystal White	•

Dimensions

	3-DOOR	5-DOOR
Wheelbase	90.7"	93.9"
Length	152.8"	155.9"
Height	55.6"	55.6"
Width	65.7"	65.7"
Front tread	55.9"	55.9"
Rear tread	55.1"	55.1"
Front head room	37.8"	38.2"
Rear head room	35.5"	36.4"
Front leg room	41.6"	41.6"
Rear leg room	33.6"	34.2"
Front shoulder room	50.3"	50.4"
Rear shoulder room	49.3"	50.0"
Trunk or cargo volume (cu. ft.)*	14.9	17.0
Passenger capacity	4	4

*With rear seat up.

Ownership Experience



ROADSIDE ASSISTANCE PROGRAM

Every new Ford includes the assurance of a 24-hour
emergency Roadside Assistance Program provided during
the 3-year/36,000-mile bumper-to-bumper warranty. Ask
your dealer for complete details on this program which
includes such services as fuel delivery, tire change, jump
start, or even help when you're locked out of your car.



Ford Credit offers a wide variety of financing
and leasing programs to qualified buyers
which can be arranged right at the
dealership. Ask your Ford Dealer for all the facts.



Optional Ford Extended Service
Plans go beyond the basic
3-year/36,000-mile warranty.

Ask your dealer for complete details on the optional
plans and for a copy of the limited warranty.



Using your Ford Citibank VISA® or
MasterCard® could earn you hundreds,
even thousands of dollars from Ford
toward the purchase or lease of a new
Ford, Lincoln or Mercury product. To apply or get more
information, call 1-800-374-7777. Or visit a Ford or
Lincoln-Mercury Dealer, or a branch of Citibank.

DEALER-INSTALLED ACCESSORIES

Your Ford Dealer offers a variety of quality Ford-brand
accessories that meet or exceed our strict specifications.

PRODUCT CHANGES AND OPTIONS AVAILABILITY

Following publication of the catalog, certain changes in
standard equipment, options, prices and the like, or
product delays, may have occurred which would not be
included in these pages. Your Ford Dealer is your best
source for up-to-date information.

Ford Division reserves the right to change product
specifications at any time without incurring obligations.

Options shown or described are available at extra cost and
may be offered only in combination with other options or
subject to additional ordering requirements or limitations.

For more information, visit our Web site at
<http://www.ford.com>



BUILDING A COMPLETE LINE-UP OF QUALITY CARS AND TRUCKS



Aspire



Explorer



Escort



Windstar



Probe



Aerostar



Mustang



Club Wagon



Contour



Econoline



Thunderbird



Taurus



F-Series



Crown Victoria



Expedition



Ranger

