



1 9 9 8 M E R C U R Y V I L L A G E R



1 9 9 8 M E R C U R Y V I L L A G E R

1 9 9 8 M E R C U R Y V I L L A G E R



*Imagine yourself in a Mercury*



1 9 9 8 M E R C U R Y V I L L A G E R







■ If it wasn't for the spacious interior  
and sliding seat, you'd think  
you were in a car.

There are many reasons why Villager matches your lifestyle so well. Since it's a Mercury, it has the distinctive styling that sets it apart from other minivans. It also has an interior that's adaptable and flexible, with the kind of creature comforts that really come in handy. And Villager is just the right size for all your needs. It can easily accommodate you when you go golfing, haul garden supplies, take friends out to dinner or head out of town for the weekend.



Talk about versatile. Villager offers an interior that can be arranged and rearranged to accommodate just about anything you need to haul. To make it easy to load bulky items, the rear seat slides on recessed rails and locks into five different positions. You can also remove the second-row seats and slide the rear seat all the way forward for maximum cargo space. This puts you in control, because now you don't have to borrow a truck to transport big loads.

Optional leather seating surfaces.

## It's nearly as flexible as you are.



The instrument panel (1) is designed to put the controls you need right at your fingertips.

Available power front door windows (2) include one-touch-down driver's window and can be operated 15 minutes after the ignition is turned off, or until the front doors are opened.

Plenty of cup holders (3) are provided for your convenience.

Available rear audio controls (4) allow rear passengers to adjust the volume and change stations, while override control remains with the driver.

The available rear liftgate window (5) can be opened to access small packages, or open the entire liftgate for larger loads.

You'll find plenty of usable storage space aboard your Villager. Included is a third-row storage box (6) with cover.

An extra storage area (7) is available under the front passenger seat.

A second 12-volt outlet (8) is included on LS and is available on GS models. Power outside mirrors (not shown) also come standard on LS. Illuminated visor/vanity mirrors (9) are available.

Villager features a third-row seat that slides on recessed rails (10), allowing you to transport your loads flat on the floor and makes loading easier, without damaging your packages.







If you're looking for comfort, you'll feel right at home here. For starters, its low step-in height makes it easy to get in and out. Inside, you're literally surrounded by convenient features to make your travels most enjoyable. You'll find the four captain's chairs fit you just right. For even more comfort, a 6-way power driver's seat and 4-way power passenger seat are available. So whether you're on a quick trip to the store or heading across the country, you'll arrive ready to go.



26 Capt. Chairs (2nd Row) are removed, can Bench be used in a forward position? YES  
Can Bench be removed easily? NO

■ There may be more important things to do. But, who cares?







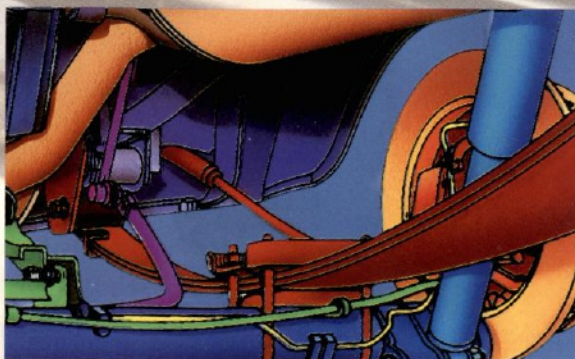
■ Getting there is half the fun.





■ Especially when you've got  
the right stuff

You'll be pleasantly surprised by how much Villager rides and handles like a car. Its surefooted front-wheel drive is augmented by a powerful 3.0-liter V-6 engine, four-speed electronically controlled automatic transaxle and power rack-and-pinion steering. A specially engineered suspension is another major factor in its superb ride. Up front are MacPherson struts along with a stabilizer bar which helps provide control when cornering. The rear suspension includes leaf springs with three bushings for improved ride and handling. However, unlike in a car, you sit above traffic with a commanding view of the road.



■ Getting there is half the fun.







■ There's nothing like having  
an afternoon to yourself.





■ And nothing quite like the Villager Nautica.

The Mercury Villager Nautica edition has a style all its own. It comes equipped with the kind of features you expect on a luxury vehicle. Plus it sports some that are exclusive to Nautica. These include four captain's chairs with leather seating surfaces and embroidered Nautica logo, deluxe aluminum wheels and an attractive Nautica garment bag. (Please allow six weeks for delivery.)



For ventilation, rear quarter windows conveniently flip out or close with the touch of a button. Second-row windows can be opened manually.



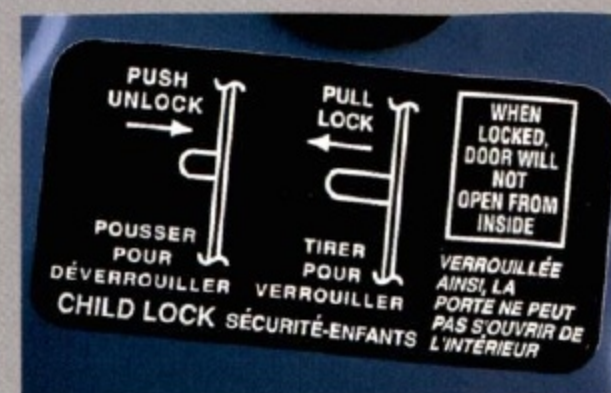
■ There's nothing like having an afternoon to yourself.



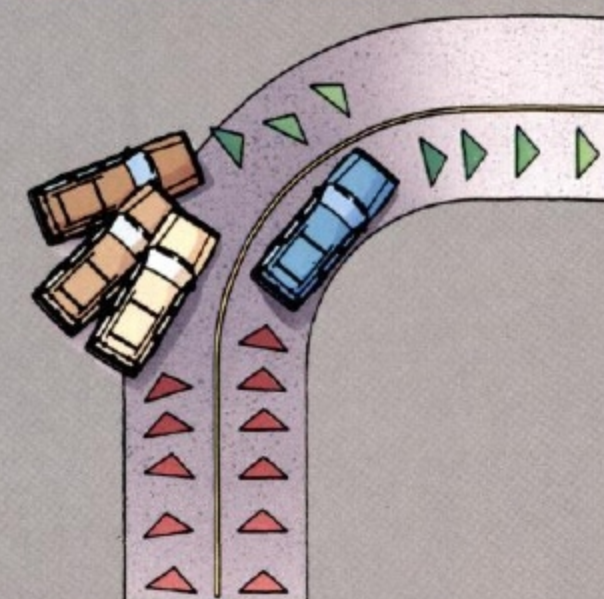


## ■ We're looking after your safety.

When activated, the childproof lock prevents children from opening the sliding door from inside, yet it can still be opened from the outside if unlocked. This feature provides you with extra peace of mind.



Available four-wheel Anti-lock Brake System (ABS) contributes to greater steering control during hard braking on most slick surfaces.

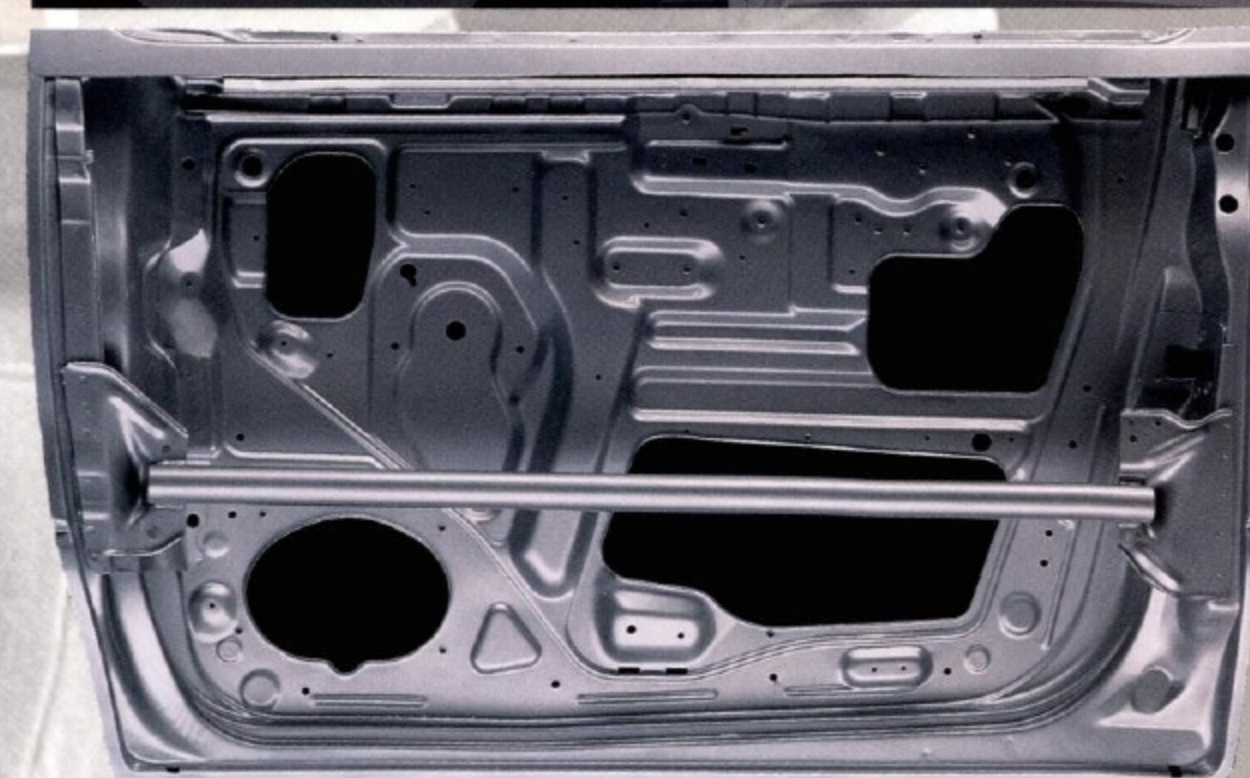


Depowered, Second Generation airbags are designed to further enhance protection for the driver and passenger. Always wear your safety belt and secure children in the rear seat.



Integrated rear child safety seats are available with cloth seating and can accommodate children over one year old and weighing 20-60 lbs. They're a convenient alternative to lugging bulky child safety seats from one vehicle to another. Please be sure children are properly fastened in child safety seats as required by local law.

Heavy-gauge steel side intrusion beams are mounted inside each door for additional protection.



## ■ While leaving your options open.



Power moonroof adds extra pleasure to your driving experience. It opens fully or rear tips up for fresh air ventilation.



The Super Sound System includes an AM/FM stereo/cassette with four 2-way speakers and a sub-woofer, a six-disc CD changer and 114 watts of power.

A six-disc CD changer is available as a factory- or dealer-installed option.



To make your Villager even more luxurious, captain's chairs with leather seating surfaces are available. They're easy to clean, too.

Convenient controls for the six-way power driver's seat include adjustments for lumbar support and seat height.



Side window deflectors help keep the rain and wind out of your vehicle. Dealer-installed.



A soft luggage cover can be used with factory luggage rack or roof rack to provide a convenient place to carry luggage, and it features zippers on the rear and side panels for easy access. Dealer-installed.

A cargo net secures things like groceries and sports equipment, and keeps the cargo area neat and organized.

For your safety, a Remote Keyless Entry system lets you lock and unlock all doors and liftgate, or just the driver's door, from a distance. It also features a panic alarm.



A handy ski rack can accommodate up to six pairs of skis. It's designed for quick securing or removal of skis. Dealer-installed.

**SPECIAL EDITION PACKAGE.** This new package includes a rear spoiler, bodyside tape stripes, special badging and front floor mats with embroidered "Special Edition" logo. See your dealer for ordering details.





Take care of all the details  
and everything else just seems to  
fall into place.

## Mileage? 17/26 The Technical Stuff

ENGINE		SUSPENSION	
Type	SOHC V-6	Front—MacPherson nitrogen gas-pressurized struts with front stabilizer bar	
Displacement	3.0 liters	Rear—Hotchkiss leaf suspension with nitrogen gas-pressurized shocks	
Horsepower (SAE net)	151 @ 4800 rpm	Optional—Handling suspension includes rear stabilizer bar and revised front and rear spring rates, with P215/70R15 BSW performance tires	
Torque (SAE net)	174 @ 4400 rpm		
Fuel delivery	Sequential multi-point electronic fuel injection		
Optimum towing capacity	3,500 lbs.		
Engine control	Electronic		
TRANSAXLE		DIMENSIONS (IN INCHES)	
Electronic 4-speed automatic overdrive w/overdrive lockout		Wheelbase	112.2
		Length	190.2
		Headroom, front/middle/rear	39.4/39.7/37.3
		Legroom, front/middle/rear	39.9/34.8/36.7
		Shoulder room, front/middle/rear	62.1/63.9/63.3
		Hiproom, front/middle/rear	56.8/59.0/49.6
		Cargo volume, behind 3rd seat	14.1 cu. ft.
		Cargo volume, maximum	126 cu. ft.
		Height	67.6
		Width	73.8
		Track, front/rear	63.4/63.4
CAPACITIES		STEERING	
Fuel	20.0 gal.	Power assisted rack-and-pinion steering with 17.5:1 ratio.	
Oil capacity	4.2 qts. w/filter	Curb-to-curb turning diameter	39.9 ft.
Seating capacity	7 passengers		
Curb weight	4,003 lbs.		
BRAKES			
Front disc/rear drum 4-wheel hydraulic actuated with diagonal split			

FUNCTIONAL FEATURES	GS	LS	NAUTICA
Second Generation depowered dual airbags (Supplemental Restraint System)	STD	STD	STD
Front-wheel drive	STD	STD	STD
Brake/shift interlock	STD	STD	STD
Battery saver	STD	STD	STD
Childproof lock on sliding side door	STD	STD	STD
Flip-out 2nd- and 3rd-row bodyside windows	STD	STD	STD
Front side window defoggers	STD	STD	STD
Front interval windshield wipers and rear window wiper/washer	STD	STD	STD
Front 3-point lap/shoulder safety belts with adjustable D-rings	STD	STD	STD
Rear 3-point lap/shoulder safety belts for outboard passengers (outboard with child seat safety locking feature)	STD	STD	STD
4-wheel anti-lock brakes	OPT	STD	STD
Electric rear window defroster	OPT	STD	STD
Fingertip speed control	OPT	STD	STD
Trailer Tow Package (includes full-size spare)	OPT	OPT	OPT

EXTERIOR FEATURES	GS	LS	NAUTICA
Complex reflector headlamps with front cornering and side marker lamps	STD	STD	STD
5-mph impact bumpers front/rear	STD	STD	STD
Urethane lower bodyside protection	STD	STD	STD
Solar tint glass	STD	STD	STD
Two-tone paint with color-keyed molding	OPT	STD	STD
Privacy glass™	OPT	STD	STD
Luggage rack	OPT	STD	STD
Dual power outside mirrors	✓ OPT	STD	STD
Flip-open liftgate window	OPT	OPT	OPT
Remote Keyless Entry system with 2 key fobs	✓ OPT	OPT	OPT
Power moonroof		OPT	OPT

GOLD SPORT PACKAGE with gold trim badging, deluxe aluminum wheels with gold accents, gold bodyside molding insert (LS only), body-color grille and outside mirrors (heated), and select color choices

OPT OPT

WHEELS AND TIRES	GS	LS	NAUTICA
P205/75R15 BSW all-season radials	STD	STD	STD
Temporary spare tire mounted under body	STD	STD	STD
Wheel covers	STD	STD	
Deluxe aluminum wheels with Grey painted pockets			STD
Deluxe aluminum wheels	OPT	OPT	
Deluxe aluminum wheels with Gold painted pockets	OPT	OPT	
Aluminum wheels	OPT		

INTERIOR COMFORT AND CONVENIENCE FEATURES	GS	LS	NAUTICA
Front and rear floor mats	STD	STD	STD
Glove box with lamp	STD	STD	STD
Entry assist handles	STD	STD	STD
Slide-out coin holder	STD	STD	STD
Dual overhead visor mirrors	STD	STD	STD
Sliding door step lamp with time delay	STD	STD	STD
Tilt steering column	STD	STD	STD
Third-row storage box with cover	STD	STD	STD
Rear power point plug (12 volt)	OPT	STD	STD
Autolamp on/off delay system		STD	STD
Nautica garment bag			STD

Light Group and power remote rear quarter windows: Includes overhead dual map lights, liftgate lamp, front door step lamp and under-dash lamps with time delay	OPT	STD	STD
Power front door windows	✓ OPT	STD	STD
Power door locks with sliding side door "memory"	OPT	STD	STD
CFC-free air conditioner—front	✓ OPT	STD	STD
CFC-free air conditioner and heater—rear	OPT	OPT	OPT
Anti-theft System	OPT	OPT	OPT
Integrated child safety seats (cloth bench seating only)	OPT	OPT	OPT
Cargo net	OPT	OPT	OPT
Electronic automatic temperature control		OPT	OPT
Leather-wrapped steering wheel with audio controls		OPT	OPT

SEATING FEATURES	GS	LS	NAUTICA
Cloth reclining front captain's chairs with adjustable head restraints, inboard armrests and 2 cup holders mounted inboard	STD	STD	
Unique 7-passenger Graphite leather seating surfaces with Nautica Spinnaker logo and Light Graphite inserts			STD
7-passenger seating—includes 2 additional quick-release quad captain's chairs with rear seatbacks that fold down as tray tables, and 3-passenger rear bench seat (movable in floor tracks) and two outboard head restraints	OPT	OPT	STD
Front passenger under-seat storage area	OPT	STD	STD
2-passenger middle bench seat	OPT	STD	
Leather seating surfaces		OPT	STD
4-way power passenger seat		OPT	OPT
6-way power driver's seat with power lumbar	✓ OPT	OPT	OPT

INSTRUMENTATION	GS	LS	NAUTICA
Backlit instrument cluster with tachometer, trip odometer, electronic warning chimes, temperature gauge and headlamp-on reminder chime	STD	STD	STD
Electronic instrument cluster including trip computer with outside temperature		OPT	OPT



AUDIO SYSTEMS	GS	LS	NAUTICA
AM/FM stereo/cassette with 4 speakers	STD	STD	STD
AM/FM stereo/cassette/Premium Sound System/CD changer compatibility and rear-seat controls	OPT	•	•
Premium Sound System with AM/FM stereo/cassette/6-disc CD changer	OPT	OPT	OPT
Super Sound System with AM/FM stereo/cassette/6-disc CD changer		OPT	OPT
Steering wheel audio controls		•	•
6-disc CD changer	DLR	DLR	DLR

PREFERRED EQUIPMENT PACKAGES	GS 691A	LS 692A	NAUTICA 697A
CFC-free air conditioner—front	•	•	STD
Electric rear window defroster	•	•	STD
Fingertip speed control	•	•	STD
Dual power outside mirrors	•	•	STD
Power front windows and door locks	•	•	STD
7-passenger seating	•	•	STD
Quad captain's chairs	•	•	STD
Luggage rack	•	•	STD
Front passenger under-seat storage area	•	•	STD
Privacy glass™	•	•	STD
4-wheel anti-lock brakes	•	•	STD
Aluminum wheels	•	•	STD
6-way power driver's seat with power lumbar	•	•	•
CFC-free air conditioner and heater—rear	•	•	•
Flip-open liftgate window	•	•	•
Remote Keyless Entry system with 2 key fobs	•	•	•
AM/FM stereo/cassette/Premium Sound System/CD changer compatibility and rear audio controls		•	•
Leather-wrapped steering wheel with audio controls		•	•
Dual power heated mirrors		•	•
4-way power passenger seat		•	•
Dual illuminated vanity mirrors		•	•
Electronic automatic temperature control		•	•
Electronic instrument cluster including trip computer and outside temperature		•	•
Leather-trimmed quad captain's chairs		•	•
Nautica Appearance Package			STD
Handling and Suspension Package			STD

STD = Standard; OPT = Optional Feature; DLR = Dealer-Installed Option; • = Included in Package

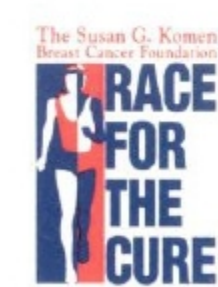
Option Availability: Options shown or described in this brochure are available at extra cost and may be offered only in combination with other options or subject to additional ordering requirements or limitations. Callaway is a registered trademark of Callaway Golf Company.

### PRODUCT CHANGES

Following publication of this brochure, certain changes in standard equipment, options, prices and the like, or product delays may have occurred which would not be included in these pages. Your Mercury dealer is your best source for up-to-date information. Lincoln-Mercury Division reserves the right to change product specifications at any time without incurring obligations.



Ford Credit offers a wide variety of financing and leasing programs to qualified buyers that can be arranged right at the dealership. Ask your dealer for the facts on these programs, or call Ford Credit Customer Service at 1-800-727-7000.



Foundation. Call 1-800-653-5355.

For more information on Mercury vehicles via the Internet enter <http://www.mercuryvehicles.com>



## GS two-tones



## LS two-tones



## Nautica two-tones



## Or for those who prefer single colors...

GS  
 Silver Clearcoat Metallic  
 Cabernet Red Clearcoat Metallic  
 Light Saddle Clearcoat Metallic  
 Toreador Red Clearcoat Metallic  
 Medium Wedgewood Blue Clearcoat Metallic  
 Light Blue Clearcoat Metallic  
 Deep Forest Green Clearcoat Metallic  
 Medium Seafoam Clearcoat Metallic  
 Midnight Grey Clearcoat Metallic  
 Oxford White

LS  
 Cabernet Red Clearcoat Metallic  
 Light Saddle Clearcoat Metallic  
 Oxford White

GOLD SPORT PACKAGE  
 Black Clearcoat  
 Cabernet Red Clearcoat Metallic  
 Oxford White  
 Deep Forest Green Clearcoat Metallic

## Interior Colors

Saddle  
 Graphite  
 Willow Green

## The Mercury Commitment<sup>SM</sup>

Imagine a full line of cars featuring sophisticated styling and quality craftsmanship. Imagine an automaker who's concerned about every aspect of the care you receive from your dealer. Imagine a comprehensive program dedicated to your total satisfaction. It's called the Mercury Commitment and it's one of the extra comforts of owning a Mercury.

### ROADSIDE ASSISTANCE.

Throughout the three-year/36,000-mile warranty period, you get 24-hour, seven-day-a-week coverage for towing, fuel delivery, jump-starts, tire changing and lock-out assistance. For roadside assistance, call 1-800-241-3673.

### MERCURY VEHICLE WARRANTY.

As part of the Mercury Commitment, you receive the Mercury Bumper to Bumper limited warranty, covering your automobile for three years or 36,000 miles with no deductible. You also receive a corrosion protection limited warranty providing coverage for five years with unlimited mileage and no deductible. Ask your Mercury dealer for complete details and a copy of the limited warranties.

### SPECIAL DELIVERY PROCESS.

Prior to delivery, your dealer's service department thoroughly prepares your

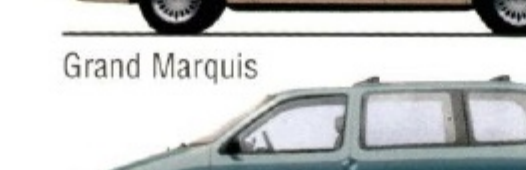
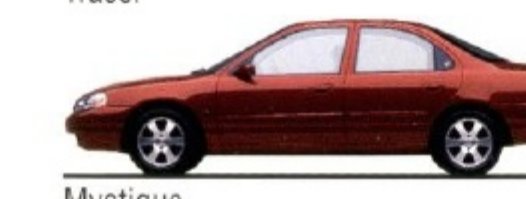
vehicle. At delivery, the dealership sales staff provides a customer delivery meeting, service department tour, checklist review and other services.

### MERCURY CUSTOMER ASSISTANCE CENTER.

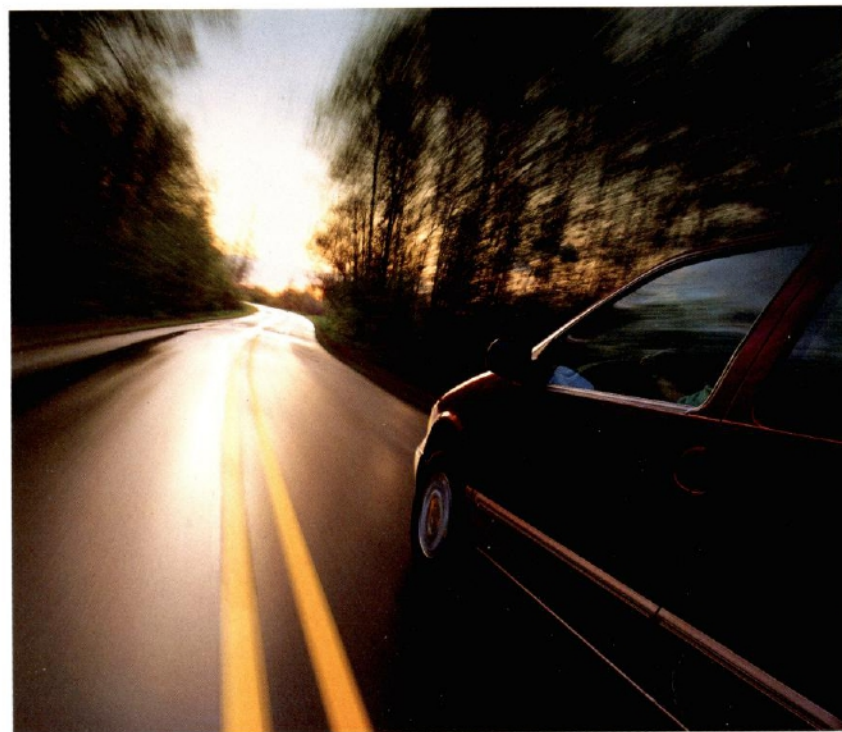
If you have questions about your Mercury vehicle or the Mercury Commitment, you're invited to contact your selling dealer. Or if you wish, feel free to call our Customer Assistance Center at 1-800-392-3673.

### OWNER IDENTIFICATION CARD.


You'll receive a Mercury Commitment ID card for your wallet. You'll want to keep it handy because it includes the Mercury Commitment hotline numbers for customer service and roadside assistance.







Imagine yourself in a Mercury

Mercury 

LITHO IN USA (650,000) 7-97 P-7635  
*Buckle up—together we can save lives.*