



The Golf

*2003 Model Year*

Volkswagen Information Service. Telephone 0800 333 666

Internet: [www.volkswagen.co.uk](http://www.volkswagen.co.uk)

© Volkswagen Group United Kingdom Limited 2002.

Issue: 1 June 2002. Printed in UK.

PVW006GO

*GTI forever.*

**1977 onwards.**



Model shown is GTI.

6 *Philosophy*

8 *Interior Design*

12 *Safety*

18 *Engines*

24 *Quality*

30 *The Golf E and S*

32 *The Golf SE*

34 *The Golf GTI and GT TDI PD*

38 *The Golf GTI 150 bhp*

42 *The Golf V5*

46 *The Golf V6 4MOTION*

50 *Optional Equipment*

56 *Accessories*

64 *Colours and Upholstery*

72 *Technical Specification*

80 *Standard Equipment*

82 *Glossary and Dimensions*

84 *Volkswagen Service*

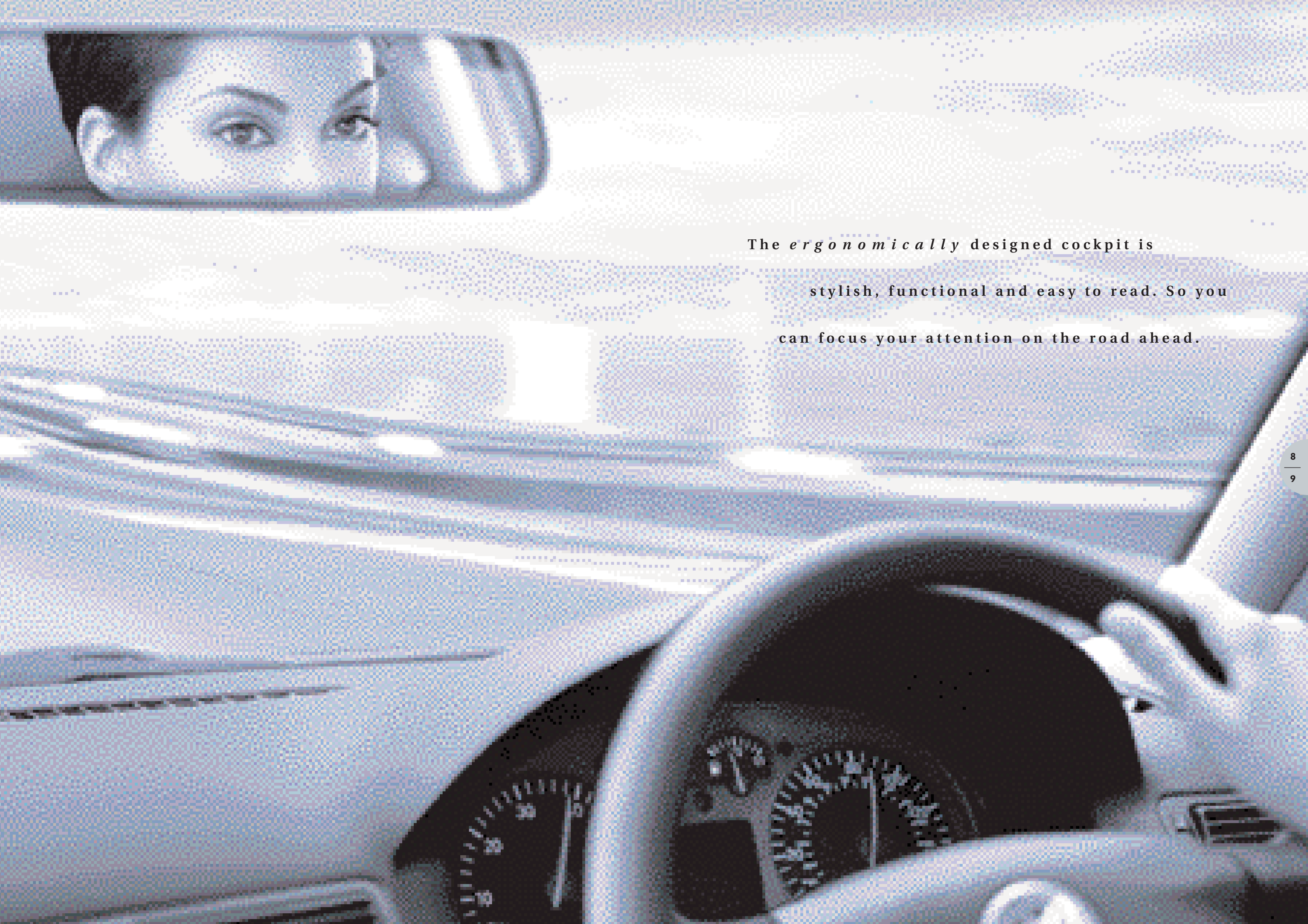


Model shown is GTI 1.8T with optional  
Winter pack including headlight washer system.

*For over two decades the Golf has epitomised Volkswagen's philosophy – to build cars that are the perfect synthesis of reliability, style, safety and performance. The result is a car that offers a value-for-money specification matched by few vehicles in its class. It's, therefore, no surprise to learn that the Golf is Europe's number one best-selling car. And the latest Golf is even better. Yet, reassuringly, such extensive improvements have been achieved whilst retaining the Golf's classic external silhouette.*



Model shown is S fitted with optional 15" 'Avus II' alloy wheels.



The *ergonomically* designed cockpit is

stylish, functional and easy to read. So you  
can focus your attention on the road ahead.



The true colours of the Golf. Distinctive, stylish and ergonomic, combined with unsurpassed attention to detail.

Interior shown is V6 4MOTION with optional leather sports seats and navigation/radio system.



Whichever model you choose from the Golf range, you'll appreciate the firm and supportive seats.



The distinctive dashboard of the Golf has a unique visual impact.

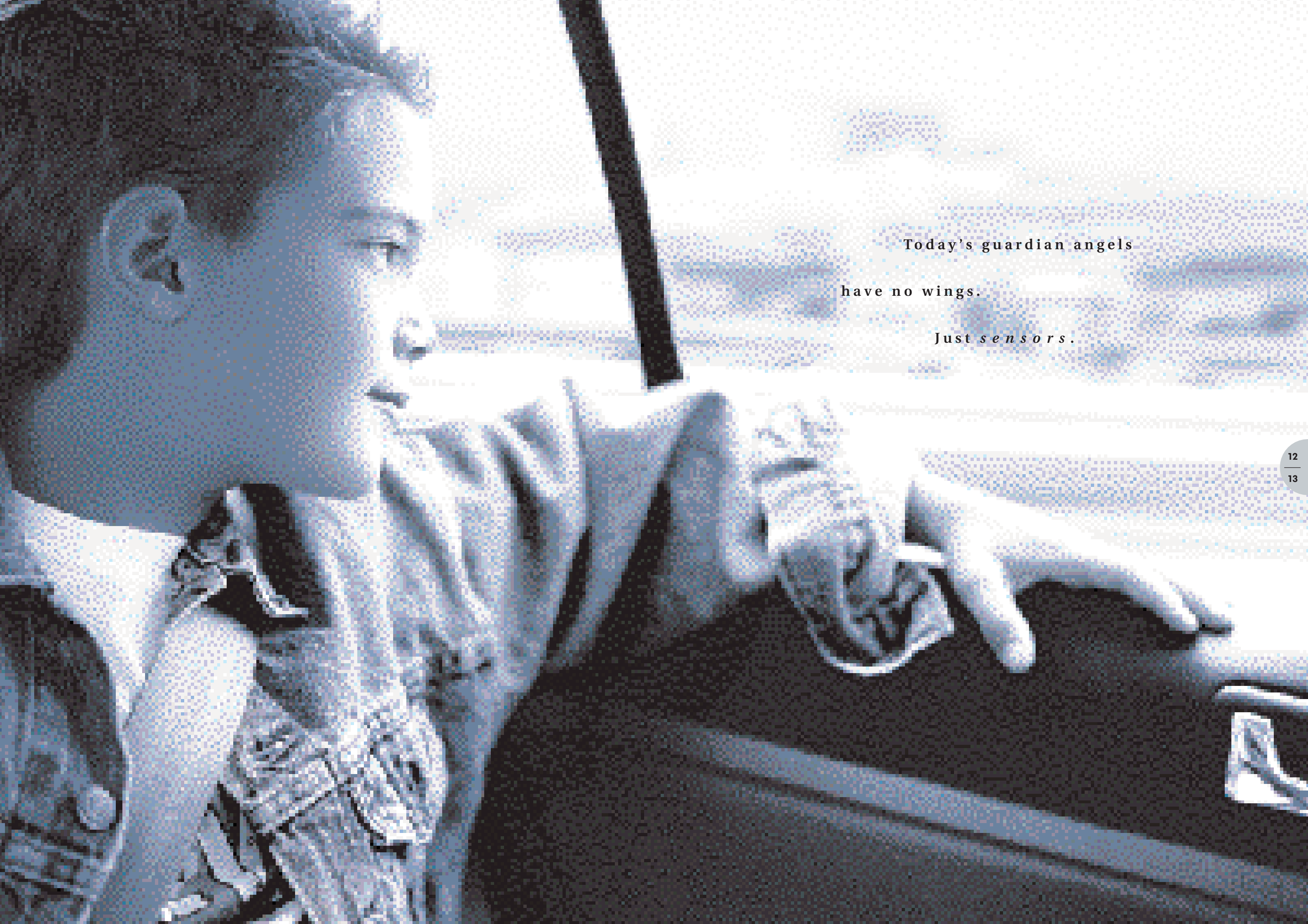


For 3 door models, 'easy entry' sliding seats make access to the rear a simple task. This feature is standard on SE models and above.

*The interior of the Golf exudes quality. From the moment you grip the steering wheel, you'll notice its stylish and functional virtues. The chunky feel of the steering wheel, the perfect position of the indicators and the ideal location of every switch and control. All designed to make driving the Golf a gratifying experience.*

*But if one feature personifies the attention to detail in the Golf, it must surely be the distinctive blue illumination and red needles of the instrument panel. This unique combination underlines the optical superiority of the Golf. The ergonomic detail continues: the steering wheel can be adjusted for both height and reach, as can the driver's seat. The result is a near perfect driving*

*position that can be tailored to your individual stature. There are also features for your convenience; for example, the useful storage compartments in the doors, two cup holders in the front (on SE models and above), two reading lights and, on the S models and above, electrically heated and adjustable exterior door mirrors. Which just goes to show how small detail can have a big impact.*



Today's guardian angels  
have no wings.  
Just *sensors*.





With power steering and improved chassis, the Golf delivers superb roadholding. Model shown is E fitted with an optional third rear head restraint.



The Electronic Stabilisation Programme – ESP – helps to prevent losing control in unstable driving conditions.

Volkswagen's Electronic Stabilisation Programme is an active safety feature which can help to prevent an accident by registering and helping to correct oversteer, understeer and loss of stability in the vehicle.

The car's driving condition and the driver's actions are constantly monitored thanks to a variety of sensors placed throughout the car. The sensors monitor factors such as steering angle, wheel angle, yaw rate

(spinning) and lateral acceleration (side to side movement). According to the situation, ESP reacts by braking the appropriate wheels and automatically adjusting the engine's output. Included in the ESP package are Electronic Differential Lock (EDL) and Anti-Slip Regulation (ASR).

However, this additional safety feature is no excuse to drive recklessly because, despite its proven quality, ESP cannot dispense with the laws of physics.



The door-fitted 'puddle' lights illuminate the path when exiting your Golf at night-time and are standard on SE models and above.

Regardless of your driving experience, you can never account for other road users or unforeseeable driving situations. So with the Golf it's comforting to know you have the benefit of advanced technology such as Electronic Brake-pressure Distribution (EBD) and Anti-lock Braking System (ABS). EBD constantly monitors the rate at which each wheel is slowing and redistributes the braking effort accordingly between the front and rear axles. The result of this process is much greater stability, even under severe braking.

The ABS is activated under extreme braking, particularly on slippery road surfaces. This electronically controlled system



ABS is standard on all models to provide the highest level of active safety.

helps to prevent the wheels from 'locking', thereby enabling the car to remain steerable in hazardous conditions. Widely regarded as one of the major safety innovations of recent years, ABS is standard on all Golfs.

At Volkswagen our commitment to driver and passenger safety goes much further. We want you to avoid potentially dangerous situations in the first place, so we've developed a host of active safety features. For example, you can have the option of rain sensitive windscreen wipers which operate automatically. Or how about an automatic dimming rear-view mirror that detects the amount of dazzle from the car behind?



Front seat side airbags are standard across the range. They provide added protection in the event of a side impact.

There are also plenty of standard safety features right across the Golf range. The newly developed twin halogen headlights are not merely a stylish addition, but greatly improve road illumination. Plus, a high level brake light that provides a clearer message to following traffic. In addition, there are front seat belt tensioners and full size driver and front passenger and front seat side airbags as standard across the range.





*When Volkswagen's engineers started to develop the Golf, safety aspects were of paramount importance.*



**Rigorous crash testing simulates a front offset impact. Even at this speed, the survival zone remains largely intact.**

*How would the car react in various crash scenarios? In order to discover this information, high-tech computers were utilised*



**Standard across the range, full size driver and front passenger airbags help to minimise injuries to the head and upper body.**

*to simulate collisions from probable angles. Only when the high criteria of the computer tests were achieved, did this*



**In addition to the standard front seat side airbags, energy absorbing materials in the side panels further reduce the risk of injury.**

*information pass to the building of the chassis. With regard to frontal impact, the reason for the Golf's immense resistance lies within the crumple zone. Following impact, this will absorb energy to help protect the inner survival zone, helping to minimise occupant injuries, particularly around the front footwells.*

*The second most common accident involves side impact. With the Golf, a number of features are designed to minimise damage from such accidents. These include*

*a reinforced chassis, energy absorbing protection padding, side impact bars and inner door supports for greater strength.*

*When a car is involved in an accident, often the most vulnerable occupants are children. So at Volkswagen we have pioneered the installation of an innovative child safety system called Isofix. This unique system is the first of its kind in the world and fixes a child seat directly to the chassis for greater restraint. The simplicity belies its effectiveness*

*and removes the need for the time consuming threading of seat belts through normal child seats.*

*Consider these safety measures along with the standard fitment of driver, passenger and front seat side airbags, as well as front seat belt tensioners, and you'll start to appreciate the extremely safe feeling associated with driving a Golf.*

*But as Volkswagen is one of the leading car manufacturers with regard to the safety features in every model's design, you deserve nothing less.*

An aerial photograph of a winding asphalt road that curves through a vast, snow-covered landscape. The terrain consists of rolling hills and valleys, all blanketed in a thick layer of white snow. The road is dark and stands out against the white surroundings. The sky is a pale, overcast blue. The overall mood is one of isolation and winter solitude.

The next petrol station is nowhere in sight.\*

What a *s h a m e!*

\* Please see pages 72, 73, 76 and 77 for fuel consumption figures.

What do you look for in an engine? Good performance, easy maintenance and fuel efficiency? Then look no further than one of the four diesel engines available for the Golf. The range starts with a 1.9 litre SDI 68 bhp available for the Golf E. Three further diesels, all 1.9 litre capacity, have the advantage of Volkswagen's innovative 'Pumpe Düse' technology. This high pressure fuel injection system is extremely

The top-of-the-range 150 bhp engine is one of the most powerful diesels ever launched by Volkswagen and delivers truly outstanding performance. The GTI 1.9 PD is capable of 0 - 62 mph in just 8.6 seconds and a top speed of 134 mph, where the law permits, yet is still capable of returning 52.3 mpg on the Combined fuel cycle\*.



The 1.9 litre GT TDI PD develops 130 bhp.



But this exceptional performance...



...comes with penny-pinching fuel economy.



No expense spared – except yours.



Welcome to the TDI PD.

efficient and not only boosts torque, it returns exceptional fuel economy\*.

The TDI PD 100 bhp for the S and SE is available with a 5 speed manual transmission, and achieves 64.2 mpg on the Extra-urban cycle\*, SE models benefit from the option of a 5 speed automatic tiptronic transmission. The

next engine in the TDI PD range is the

130 bhp for the GT TDI PD; this unit provides increased performance, achieving a maximum torque of 310 Nm at 1,900 rpm.

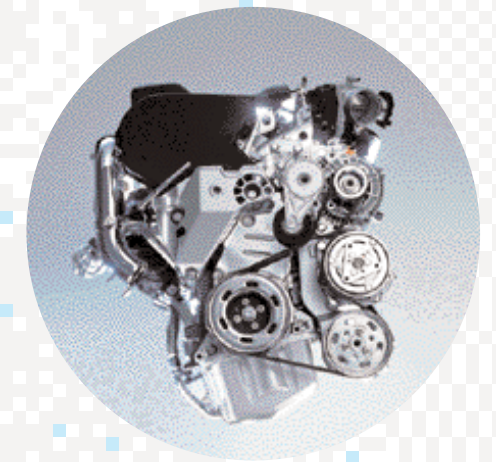
\* Please see pages 72, 73, 76 and 77 for fuel consumption figures according to EU Directive 99/94.





*The heart of every car is the engine. It's such an individual preference that Volkswagen believes you should have a wide selection of engines from which to choose.*

**The 2.3 litre 20 valve V5 engine develops an impressive 170 bhp.**



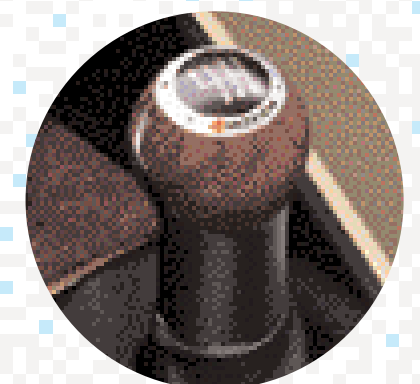
**The 1.8 litre Turbo develops 150 bhp and has an equally impressive torque curve. It delivers its maximum torque of 210 Nm from as low as 1,750 rpm right up to 4,600 rpm.**

***The petrol engines:***

- 1.4 litre, 16V 75 bhp*
- 1.6 litre, 8V 102 bhp (Automatic only)*
- 1.6 litre, 16V 105 bhp (Manual only)*
- 2.0 litre, 8V 115 bhp*
- 1.8 litre, 20V Turbo 150 bhp*
- 2.3 litre, V5 20V 170 bhp*
- 2.8 litre, V6 4MOTION 204 bhp*

***The diesel engines:***

- 1.9 litre, SDI 68 bhp*
- 1.9 litre, TDI PD 100 bhp*
- 1.9 litre, TDI PD 130 bhp*
- 1.9 litre, TDI PD 150 bhp*



**The V6 4MOTION features an 'intelligent' four wheel drive system.**

On a cold, wet and windy day,

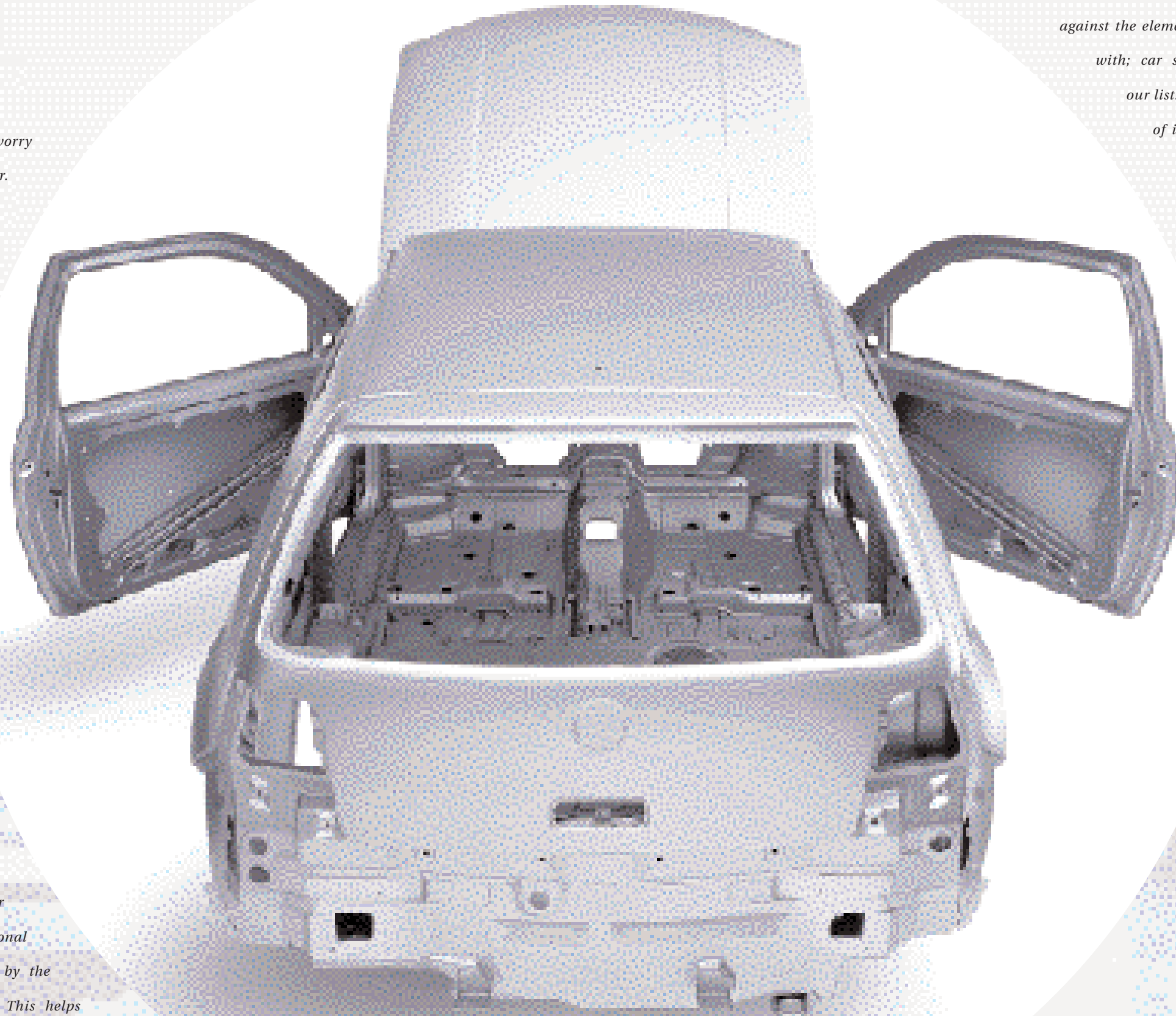
you'll be glad you *chose* the Golf.



*With the Golf you needn't worry about the effects of wet weather. Because standard across the range is a fully galvanised body that provides the highest protection against corrosion. We're so confident about its effectiveness, we'll provide an outstanding 12-year warranty to prove it.*

**Fully galvanised for lasting protection.**

*Unfortunately it's not just corrosion that can damage a car's bodywork over time. Everyday usage creates signs of ageing, with loosening joints developing irritating squeaks and rattles. But the Golf, with its high torsional rigidity, is designed for lasting strength which can help prevent the onset of audible ageing. Further evidence of the Golf's exceptional build quality can be seen by the close fit of the panels. This helps reduce drag, further adding to the Golf's refinement and interior comfort.*



*At Volkswagen it's not just protection against the elements we are concerned with; car security is also high on our list. That's why you'll find a host of innovative features to deter even the most persistent thief. For example, the ingenious security clutch mechanism that prevents the steering lock being forced. Should anyone try to force the lock, it freely rotates after a predetermined torque has been exceeded. However, this will not prevent use by the owner once the ignition key has been inserted.*

*The door locks also have rotating barrels. Should an incorrect key be inserted, the lock barrel will simply 'free-wheel'. This clever deterrent is supported by a built-in immobiliser that changes its internal 'secret' code every time the ignition is activated.*

Deciding on the Golf is the *easy* part.

Which model is the harder decision.



Model shown is S.





Interior shown is Golf S with 'Airport' cloth upholstery and optional Reflex Silver Metallic paint.

## The Golf E and Golf S.

*Volkswagen is synonymous with value for money and the Golf is no exception. Even the entry model E and its stablemate S are packed with features you'd normally associate with a higher class of car.*

*As you'd expect from Volkswagen, safety is a priority. Standard equipment includes ESP, driver and front passenger and front seat side airbags, front seat belt tensioners, central locking, two rear head restraints and a raised third brake light.*

*Externally, you'll no doubt admire its removable roof aerial, stylish twin halogen headlights and integrated front indicators.*

*And the well-equipped interior will leave you equally impressed. For example, the height-adjustable driver's seat, height and reach adjustable steering wheel and power steering all combine to make driving the Golf an extremely comfortable experience. For your convenience*

*there is a third sun visor situated above the rear-view mirror and a 'Beta' radio/cassette.*

*But the Golf is also incredibly practical. With split folding rear seats, the boot space can be increased to a spacious 1,184 litres to accommodate even bulky items.*

*With the S model you benefit from electric windows, electrically heated and adjustable door mirrors and manual air conditioning.*

*To power the Golf E you can select an economical\* 1.4 litre 75 bhp petrol engine or a 1.9 litre SDI 68 bhp diesel unit. The S model offers you the choice of a second petrol engine, the 1.6 litre 105 bhp manual or 102 bhp automatic, and the 1.9 litre TDI PD 100 bhp engine instead of the 1.9 litre SDI 68 bhp diesel unit.*

*\* Please see pages 72, 73, 76 and 77 for fuel consumption figures.*



Manual air conditioning provides year round comfort. Standard on S and SE and optional on E models.



For comfort and safety, two rear head restraints are standard.



The interior shown  
is Golf SE automatic.

## The Golf SE.

*The SE model is equipped with an even more luxurious specification, further adding to the Golf's reputation as a mid range hatchback with an 'executive' feel. Take, for example, a remote control alarm system, manual air conditioning, electric front and rear windows, a single CD player, a 'Gamma' radio/cassette with RDS and 8 speakers, rear seat centre armrest with built-in compartment box, front cup holders, a multifunction computer, and a multifunction steering wheel including cruise control, all fitted as standard equipment.*



*For added security, the central locking also incorporates anti-hijack locks. This feature allows all doors to be locked by one button conveniently located on the driver's door.*

*The SE is available with a 1.6 litre, 105 bhp petrol engine operated by a smooth 5 speed gearbox. It can reach a top speed of 119 mph, where the law permits,*

*and accelerates from 0 - 62 mph in just 10.8 seconds. For more effortless driving appeal, this engine can be linked to a 4 speed automatic transmission with a slightly reduced output of 102 bhp.*

*Alternatively, there's the option of a 'turbocharged' 1.9 litre TDI PD diesel engine producing 100 bhp, available with either a manual or 5 speed automatic tiptronic gearbox.*



**A front-loading single CD player is standard on SE models.**



**For greater all round vision, the electrically-adjustable door mirrors are also heated and fitted with blue tinted glass. Standard on S models and above.**

To meet your *highest* expectations.

Consider the Golf GTI and GT TDI PD.



Model shown is GTI fitted with an optional Winter pack.



**The Golf GTI.**

**Standard: 'Gamma' radio/cassette, front-loading single CD player and electric windows (front only operation on 3 door models; front and rear on 5 door models).**



**Electronic climate control is a luxurious feature allowing a desired temperature to be consistently maintained.**



**The powerful twin halogen headlights include integrated fog lights.**



**A front-loading single CD player is standard on GTI models.**

**The Golf GTI and GT TDI PD.**

*When first launched, the legendary Golf GTI established a new breed of car. Two decades of technical innovations have seen the Golf GTI go from strength to strength. The arrival of this Golf GTI is testimony to Volkswagen's engineering achievements and reconfirms its class-leading status.*

*The GTI is a statement of quality and exclusivity. From the height-adjustable sports seats, with firm lateral support and front seat centre armrest, to the use of the finest materials such as the leather rimmed three-spoke steering wheel, sports gear shift and handbrake lever. The standard equipment level*

*continues with front and rear carpet mats, remote central locking and alarm, electronic climate control, electric windows, electrically-adjustable and heated door mirrors, stylish 15 inch 'Avus II' alloy wheels and, on 5 door models, a rear seat centre armrest with compartment box.*

*Whichever engine you choose, the performance is sure to impress. The 2.0 litre 115 bhp engine is capable of 0 - 62 mph in just 10.5 seconds. If a GTI class diesel is more your style, there's the 'Pumpe Düse' 1.9 litre GT TDI PD 130 bhp.*



A born *leader*.

The Golf GTI 150 bhp.



Model shown is GTI 1.8T.



The sporty, but classic, interior. Standard equipment includes 'Gamma' radio/cassette, electronic climate control, front-loading single CD player and electric windows (front and rear operation on 5 door models).



## The Golf GTI 150 bhp.

*The GTI 1.8T and GTI 1.9 PD offer the perfect combination of style, performance and comfort. Their distinctive interiors are elegantly finished with black wood inserts to the centre console, ashtray lid, gear knob and inside door handles. And are complemented by a leather rimmed sports steering wheel and handbrake grip. The front sports seats include lumbar adjustment for maximum comfort.*

Interior shown is 1.8T with optional dash-mounted 6 CD autochanger.

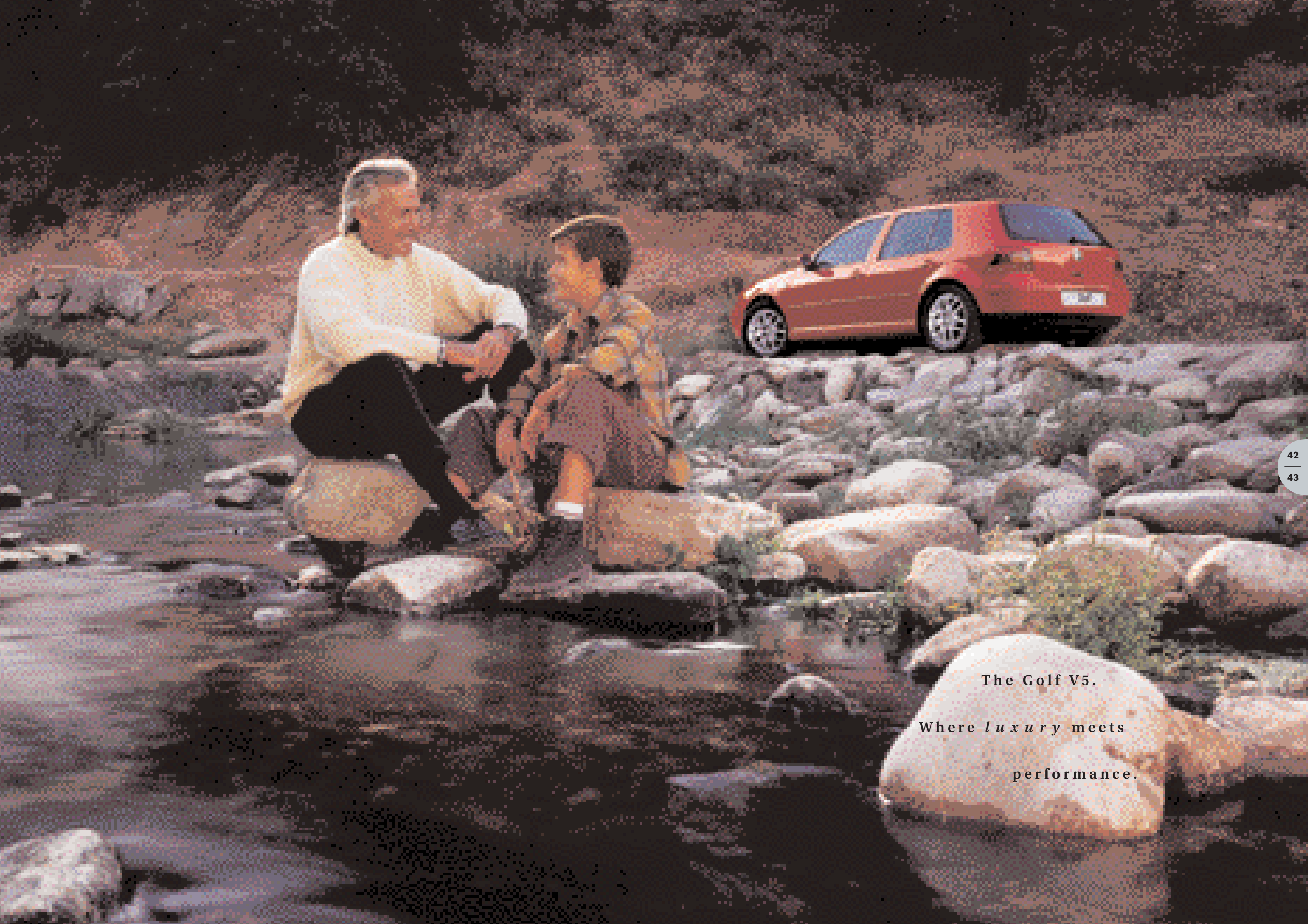
*External aesthetics are enhanced with 16 inch 'Montreal II' alloy wheels and 205/55 low profile tyres and colour co-ordinated bumper strips.*

*The heart of the GTI is its engine – either a 1.8 litre, 20V turbocharged petrol unit or one of the most powerful diesels produced by Volkswagen – the 1.9 litre TDI PD developing 150 bhp. The two units share a top speed of*

*134 mph, where the law permits, and a 0 - 62 mph acceleration time of just 8.5 seconds in the 1.8T and 8.6 seconds for the 1.9 litre TDI PD.*

*To accommodate such impressive performance, lowered suspension and ESP (including EDL and ASR) are standard.\* These two features play a significant role in the GTI's adept handling and superb roadholding.*

*\* See Glossary on pages 82 and 83 for explanation of technical terms.*



The Golf V5.

Where *luxury* meets  
performance.





Interior shown is V5 with optional cruise control, navigation/radio system and leather upholstery with heated front 'Recaro' seats.



The dash-mounted CD autochanger provides hours of uninterrupted listening pleasure.



'Montreal II' 16" alloy wheels with 205/55 tyres are standard on the V5.



A rain sensor regulates the speed of the wipers depending on the weather.

## The Golf V5.

The Golf V5 is available in 3 or 5 door and is the epitome of performance with understated luxury. Externally you'll be captivated by its 16 inch 'Montreal II' alloy wheels, darkened rear lenses and front fog lights.

Examine the interior and you'll be attracted by its electronic climate control, sports seats, 6 CD dash-mounted autochanger, rain sensitive windscreen wipers, automatic dimming rear-view mirror and 3 rear head restraints.

But nothing can quite prepare you for the open road

when you can unleash the sheer pleasure of its super smooth improved V5 engine. The V5 now benefits from 4 valves per cylinder, boosting power to 170 bhp and achieving 0 - 62 mph in 8.2 seconds. The V5 is also available with a 5 speed automatic tiptronic transmission.

Stimulate your senses.

The V6 4MOTION.





Interior shown is V6 4MOTION with optional navigation/radio system and leather upholstery.

## The Golf

### V6 4MOTION.



The 4 valves per cylinder V6 engine.



The V6 4MOTION features an 'intelligent' four wheel drive system.



Electronic climate control is a welcome feature on the V6 4MOTION. The navigation/radio system is optional at extra cost.

*When a car is powered by a V6 engine and employs four wheel drive, you can expect outstanding performance and roadholding. The Golf V6 4MOTION is such a car and it will satisfy your highest expectations.*

*The new V6 benefits from 4 valves per cylinder, boosting power to a massive 204 bhp. Such capability is applied with the utmost safety thanks to the intelligent four wheel drive and Electronic Stabilisation Programme (ESP) that creates exceptional traction and stability.*

*Its specification is equally distinctive and builds on the extensive equipment of the V5. Notable features include 16 inch 'Brands Hatch' alloy wheels, a 6 speed gearbox, chrome twin exhaust tailpipe and a 4MOTION gear knob.*

Optional equipment.

*Refreshingly different.*





### Navigation/radio systems

The combined satellite navigation and radio unit offers route guidance via the display of road maps, route information, spoken instructions and visual arrow symbols in the centre of the instrument panel. Radio functions and control of the optional boot-mounted 6 CD autochanger are also provided. The navigation CD reader is mounted in the top of the unit. Please note that the unit will only accept the navigation CDs and NOT audio CDs.

Alternatively, you can choose the monochrome navigation system, radio and CD player in one unit. Route guidance is supplied via arrow symbols in both the unit and a display in the centre of the instrument panel, together with audible recommendations. The CD slot can be used for music CDs when the navigation system is not in use. In addition, this system will also operate the optional boot-mounted 6 CD

autochanger. The monochrome navigation system is available as a factory-fitted option at extra cost on GTI models and above.

Please note the separate front-loading single CD player, dash-mounted 6 CD autochanger, DSP or navigation/radio system are not available in conjunction with each other. Please note that a navigation system with 5" colour screen including DSP is available as a separate option on GTI 1.8T and GTI 1.9 PD models only.



The combined satellite navigation and radio unit is available as a factory-fitted option at extra cost on all models except E, S and SE.



Navigation, radio and CD player in one unit with monochrome screen.

### In-car entertainment

Should you wish to upgrade the standard radio/cassette player, there are a number of factory-fitted options available. Both the 'Beta' and 'Gamma' units can be linked to a dash-mounted 6 CD autochanger, to provide uninterrupted listening pleasure, even on the longest journeys.

Alternatively, you can select a single, front-loading CD player for a modest premium on S models.



Standard on V5 and V6 4MOTION, the dash-mounted 6 CD autochanger is available as a factory-fitted option on all other models.



On S models you can choose as an option the front-loading single CD player.



The combined 'Delta' radio and single CD player is optional on SE models and above.

### Integrated child seats

By simply folding back and raising the normal seat, a child can use the normal three-point seat belts. It provides effective protection and is positioned in seconds.

The integrated child seat is suitable for children classified by ECE-R' 44/03 standard in Group 1 (9-18 kg), Group 2 (15-25 kg) and Group 3 (22-36 kg).

We recommend, however, that the child seat only be used for children as of the age of 2 years.

Please note that children in Group 1 require a special restraining table which has been approved for use with the integrated child seat and which

is available from your Volkswagen retailer (see page 61). This option is not available with leather upholstery with 'Recaro' seats.

'Economic Commission of Europe - Regulation.



Preparing your car to carry children needn't be a lengthy operation.





**Climatronic is a luxurious addition allowing a desired temperature to be consistently maintained. Available for S and SE models.**



**A glass electric sunroof provides a refreshing atmosphere.**



**The sumptuous part leather interior comes complete with heated front seats, lumbar support and rear head restraints.**



**A multifunction steering wheel is a convenient addition.**



**Cruise control provides a more relaxed drive on longer journeys.**



**The retractable headlight washer system provides a highly effective method of removing dirt for improved night-time visibility.**

**Climatronic**

*With optional climatronic you have the benefit of an electronically monitored interior temperature. Simply key in your preference and climatronic will maintain the temperature at your chosen level.*

**Electric sunroof**

*This sunroof is easy to operate thanks to automatic pre-selection. Just turn the dial and let the sunroof open to your desired setting.*

*For added safety, an anti-trapping device immediately stops the roof if it meets resistance.*

**Leather upholstery**

*For an exclusive feel, you can't beat natural leather. It not only creates a classic and elegant ambience, it's highly practical too. It provides great comfort, is extremely hard-wearing and is easy to clean and maintain. This option is available on SE models and above.*

**Multifunction steering wheel**

*The multifunction steering wheel with cruise control allows you to operate the cruise control and radio controls without taking your hands off the wheel. For a comfortable grip, it is trimmed in leather. Standard on SE and optional on GTI models and above.*

**Cruise control**

*Ideal for long motorway journeys, cruise control allows a speed to be programmed that will be automatically maintained. Activating the brake or clutch will deactivate the cruise control, but the last stored speed will be held in the memory, allowing you to resume cruising speed at the touch of a button. Standard on SE and optional on GTI models and above.*

**The Winter pack**

*During the coldest months the optional Winter pack provides a touch more comfort as well as additional safety. It includes heated front seats with five preset temperature settings, powerful headlight washer jets, heated windscreen washer jets and a warning light to indicate when the screenwash is running low.*

**Wheels**

*Alternative designs are available to create a distinctive and individual finish to your Golf.*

*All wheels are designed and constructed to the highest standards and are fitted with anti-theft wheel bolts.*



**The elegant 'Avus II' 15" alloy wheels are available for the E, S and SE models. They are fitted with 195/65 R15 tyres and anti-theft wheel bolts.**



**'Santa Monica' 17" alloy wheels with 225/45 R17 tyres come complete with sports suspension. Available for the SE, all GTI, V5 and V6 4MOTION models.**

**Parking sensor**

*This ingenious system makes parking in the smallest spaces so much easier. Sensors in the rear bumper operate by ultrasound and emit a bleep. As objects get closer, the sound signal becomes more frequent. Available on S models and above.*

**Curtain airbags**

*Airbags are a proven safety feature and every Golf is fitted with four as standard. This option provides two additional curtain airbags that are situated in the roof lining. They cover the side window areas to help protect the head during side impact or a rollover.*



**Curtain airbags help protect the head from injury during a side impact.**



*Accessories* for your Golf.



Model shown is the Golf 1.6 SE fitted with:

15" 5 Star Raceline alloy wheels.

Part No. 1J9 071 496 666

Rear roof spoiler Part No. 1J0 071 640 A

Front skirt\* Part No. 1J0 071 609 9AX

Side skirts Part No. 1J5 071 685 9AX

Rear skirt† Part No. 1J0 071 610 9AX

\* Not suitable for GTI 1.9 PD.

† Not suitable for V6 4MOTION or vehicles with parking sensor.

14" and 16" 5 Star Raceline alloy wheels are also available.

14" Part No. 1J6 071 494 666

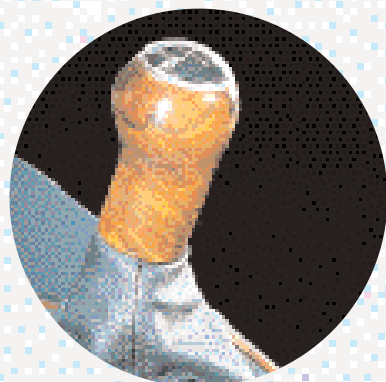
16" Part No. 1J6 071 491 666



Whether for aesthetic appeal or greater practicality, the Volkswagen accessories range could have the answer for those who desire something extra.

All items are specifically designed for Volkswagen models to ensure a harmonious fit.

If you seek maximum performance from your Volkswagen, the sports range is sure to appeal.



Wooden gear knob.†  
1.4/1.6 litre Part No. 1J0 064 225 A  
1.8+ litre Part No. 1J0 064 225 B  
† Not suitable for 6 speed gearbox.



Aluminium-look gear knob.†  
1.4/1.6 litre Part No. 1J0 064 226 A  
1.8+ litre Part No. 1J0 064 226 B

Take, for example, the rear roof spoiler and body kits that are wind tunnel tested to achieve maximum aerodynamic efficiency, or lowered suspension for extra rigidity whilst cornering at speed.

The range includes wooden or aluminium-look gear knobs to further personalise your Golf. All products in the range are manufactured to the highest quality assurance standards insisted on by Volkswagen.

As a distinctive addition, you can choose from a range of alloy wheels, each one precision engineered to lightweight specifications. Our anti-theft wheel bolts (Part No. ZGB 1J0 071 591) will keep them securely in place.



Evolo 7J x 17.  
Part No. 1J6 071 492 666



12 Star 6J x 14.  
Part No. 1J0 071 495 666



Toccata 7J x 17.  
Part No. 1J0 071 492 666



Rave 6½J x 16.  
Part No. 1C0 071 491 666

### Serious hi-fi

Volkswagen offers an audio range for the Golf that includes a higher specification radio/cassette player for E and S models. You can also choose upgraded speakers to enhance acoustics (Front Part No. 1J0 051 608, Rear (3 door) Part No. 1J6 051 606, Rear (5 door) Part No. 1J4 051 606) and CD players and autochangers for uninterrupted listening pleasure.

With increasingly sophisticated electronics, it's worth remembering that, when fitted by your Volkswagen retailer, you are assured of compatibility with vehicle systems and quality of installation.



Boot-mounted 6 CD autochanger. (For use with 'Beta' and 'Gamma' radio/cassette units)  
Part No. 1J6 057 111



**Heavy duty loadliner with anti-slip mat.**  
Part No. 863 VAG 821  
Not suitable for V6 4MOTION.

**Flexible loadliner.**  
Part No. 1J0 061 160  
Not suitable for V6 4MOTION.



**Thatcham Category 2-1 upgrade remote alarm system for E and S models.**  
Part No. 1J2 054 620



**Dog restraint (not V6 4MOTION).**  
Part No. 861 VAG 599  
**Dog restraint (V6 4MOTION).**  
Part No. ZGB 1J2 017 223 E

**Luggage restraint/net partition (not shown) secures to the vehicle body to prevent luggage sliding forward and causing possible injury to passengers.**  
Part No. 1J0 017 221



**Bobsy G1 ISOFIX DUO child seat with 2 positive fixing points to the vehicle chassis. Suitable for children of approximately 8 months to 4 years or a weight of 9-18 kg.**  
Part No. 00V 019 909



#### Protection and car care

As a Volkswagen owner, we appreciate that you'll want to maintain your car in first-class condition.

So to help restrict dirt and damage, you'll find a wide selection of products that offer

the highest level of protection. Consider the headlight protectors that prevent stones damaging the headlights and the contoured mudflaps designed for individual models to ensure the optimum position with ease of fitment.

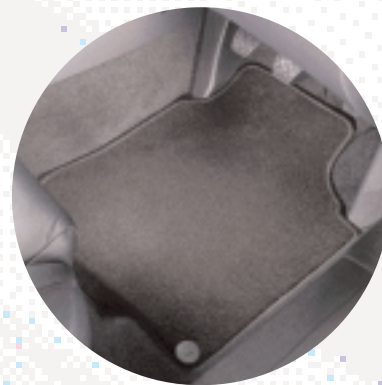
In addition, the carpet mats, rubber mats and loadliners are a fast and effective way to remove unwanted mud and stones from your car's interior and, in the process, prevent wear and tear to the original carpets.



**Headlight protectors.**  
Part No. 998 VAG 436 A



**Mudflaps.**  
Front Part No. 1J0 075 111 A  
Rear Part No. 1J0 075 101 A



**Carpet mat sets.**  
Standard – Part No. Depends upon colour.  
Luxury – Part No. Depends upon colour.  
**Protective rubber mats (not shown).**  
Front Part No. 1J2 061 501 A 041  
Rear Part No. 1J0 061 511 041

#### Safe and secure

Volkswagen is at the industry forefront when it comes to safety and security. We are amongst the first manufacturers to fit the Isofix child safety system that holds the ISOFIX DUO child safety seat, through 2 position fixing points, to the vehicle's chassis. This not only ensures greater rigidity, but reduces the time to fit a child seat because there's no need for threading seat belts.

You can also specify your Golf with the option of a factory-fitted integrated child seat. The Bobsy INTEGRAL extends the use of this child safety system to younger children with a weight of 13-18 kg. For greater flexibility, it can be used in either the left or right hand position.

For additional safety when travelling, there is a net partition available to restrict the movement of items during transit and a dog restraint to help keep your pets under control. Security is also high on the priority list, with maximum protection offered through advanced alarm systems.



**Bobsy INTEGRAL.**  
(Used in conjunction with the integrated child seat). Suitable for children of approximately 2 to 4 years or a weight of 13-18 kg.  
Part No. 000 019 919 B

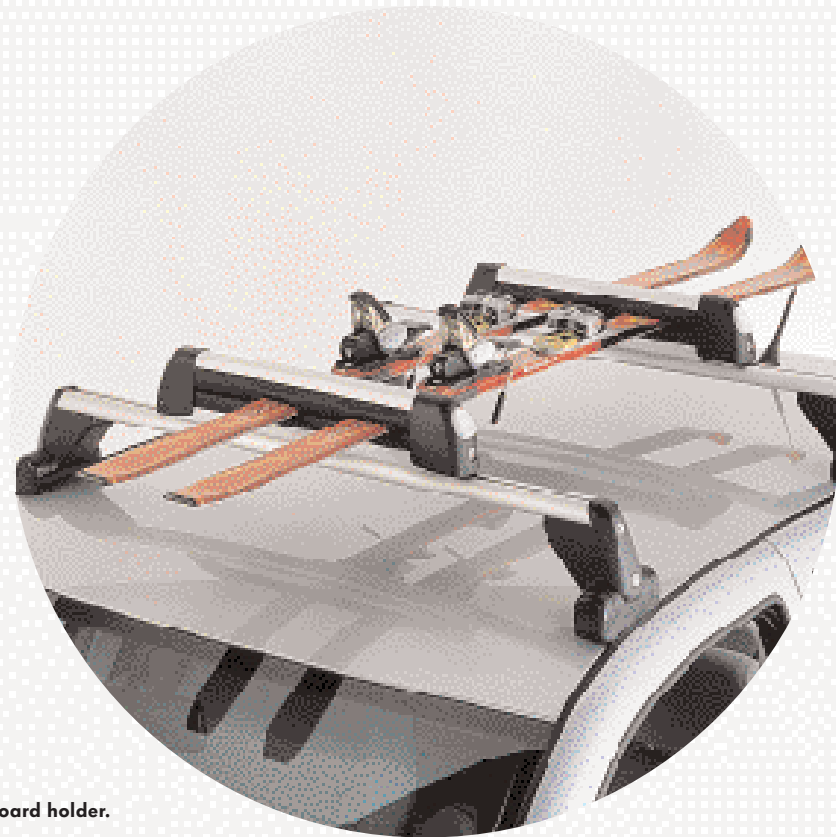


Seat shown is Bobsy G3 booster seat with removable back (not shown). Suitable for children of approximately 4 to 12 years or for a weight of 17-36 kg.  
Base Part No. 000 019 904 B  
Sleep support Part No. 000 019 905 B





**Locking roof bars.**  
**3 door Part No. 1J0 071 126 A**  
**5 door Part No. 1J5 071 126 A**



**Ski/Snowboard holder.**  
**Maximum 4 pairs skis/2 snowboards.**  
**Part No. 3B0 071 129**

**Practical travel solutions**

For day-to-day needs or short-term travel requirements, the extensive range of touring accessories is designed to solve your problems. The roof systems are typical of Volkswagen's attention to detail and have been wind tunnel tested to ensure handling and safety remain unaffected, whilst the quick release catches make fitment and removal a fast and simple process.

A unique feature of the roof bars is the method of attachment to the car itself. Underneath the standard rubber trim guttering are pre-fitted sockets into which the roof bars fix. This removes the need for any additional fixing holes or, indeed, the risk of scratching the paintwork from any external mountings.



**Semi-automatic towbar**  
**(excludes electrics).**  
**Part No. 1J0 092 145**  
**Not suitable for V6 4MOTION.**



**Luggage rack.**  
**Part No. 191 071 130 F**



**The hydraulic bicycle lift allows bikes to be lifted easily to the vehicle roof and helps to avoid accidental damage to the bodywork.**  
**Part No. 4D0 071 128 D**



**Davos ski and luggage box.**  
**Part No. 000 071 300 A**  
**Roof box – 350 litres.**  
**Part No. 00H 071 350 S**

There are several attachments for the roof bars including luggage boxes, surfboard holder and ski/snowboard holder. Should you be carrying bikes, there is a lockable bicycle holder (Part No. 6Q0 071 128) and the hydraulic bicycle lift. This useful asset effortlessly positions bikes in place and helps prevent any accidental damage to the bodywork.





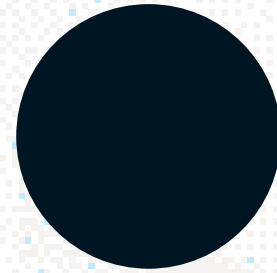
With numerous specification, trim and

colour combinations,

you can afford to be *choosy*.

## Exterior paintwork.

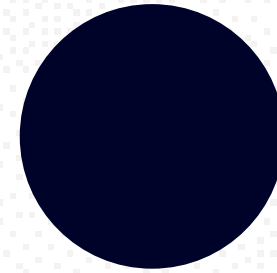
### Non-Metallic paint



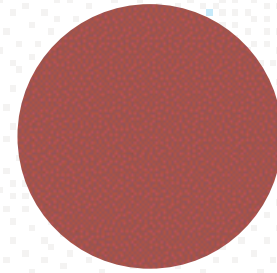
Black (A1)



Candy White (B4)

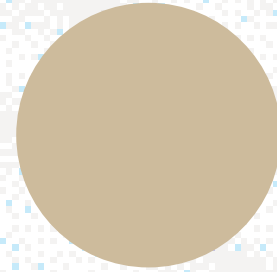


Ink Blue (D3)

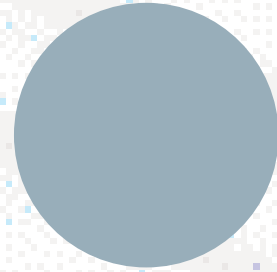


Tornado Red (G2)

### Metallic paint\*

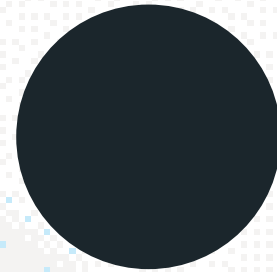


Desert Beige (1W)<sup>1</sup>

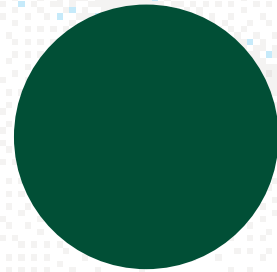


Reflex Silver (8E)

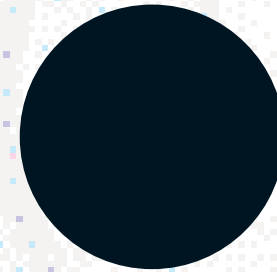
### Pearl Effect paint\*



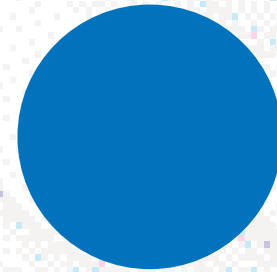
Grey Anthracite (F8)



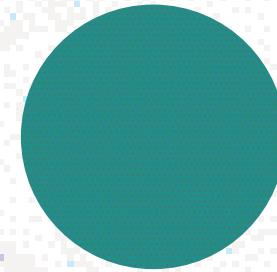
Bright Green (T3)



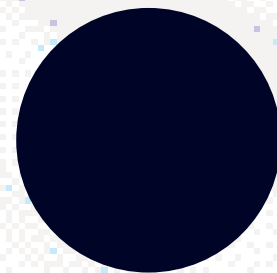
Diamond Black (Z4)



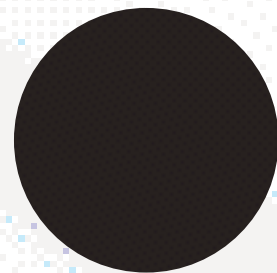
Jazz Blue (1D)



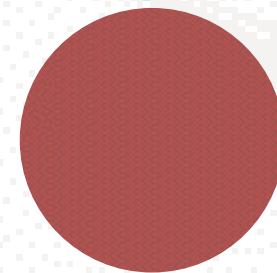
Green Collection (6F)<sup>1</sup>



Indigo Blue (7D)



Oceanic Green (8Z)



Berry Red (9W)<sup>1</sup>

Please note: The print process does not allow for exact reproduction of the paint colours.

For further details, please contact your Volkswagen retailer.

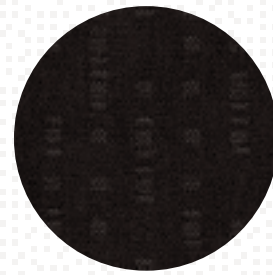
\* Metallic and Pearl Effect paint are optional at extra cost.

<sup>1</sup> Desert Beige 1W, Green Collection 6F and Berry Red 9W are not available on V6 4MOTION models.

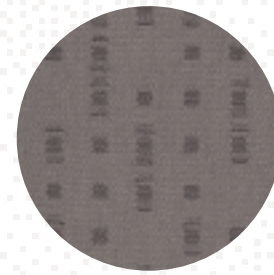


# A choice of upholstery.

E, S  
'Airport' cloth



Black (AH)

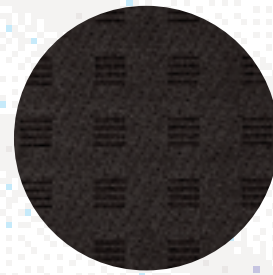


Grey (AJ)

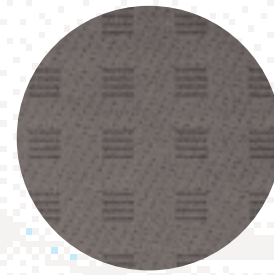


Beige (AM)

SE  
'Motion' velour



Black (CM)

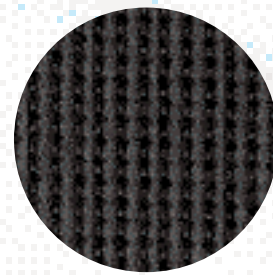


Grey (CR)

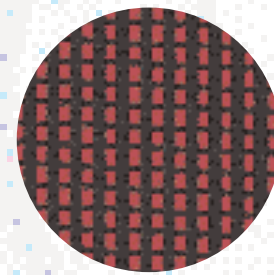


Beige (CZ)

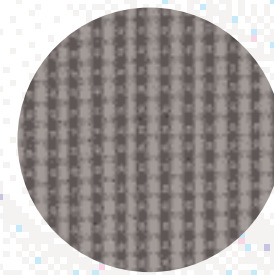
All GTI<sup>1</sup>, V5, V6 4MOTION  
Sports seats in interwoven velour



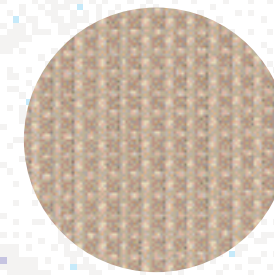
Black/Anthracite (RD)



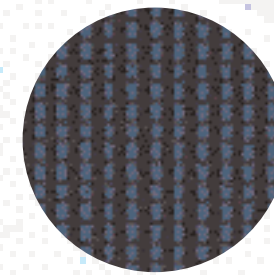
Black/Red (RE)



Grey (RF)<sup>1</sup>

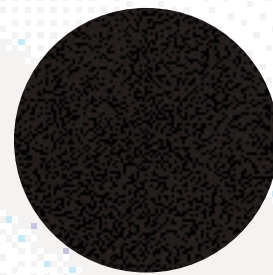


Beige (RG)<sup>1</sup>



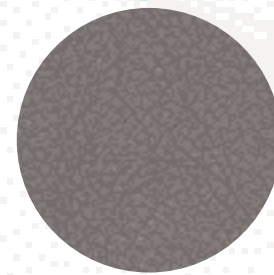
Black/Blue (RJ)

SE<sup>†</sup>, All GTI, V5, V6 4MOTION  
Sports seats  
Part leather



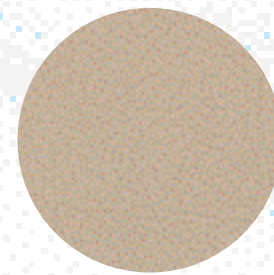
Black (VA)<sup>†</sup>

Black (VV)



Flannel Grey (VE)<sup>†</sup>

Flannel Grey (VR)



Beige (VH)<sup>†</sup>

Beige (VW)

All GTI, V5, V6 4MOTION  
'Recaro' sports seats  
Part leather

Please note: The print process does not allow for exact reproduction of the upholstery colours. For further details, please contact your Volkswagen retailer.

<sup>1</sup> Grey RF and Beige RG are not available on GTI 150 bhp models.

# Colour combinations.

Seat upholstery		Carpets	Dashboard	Black A1	Candy White B4	Ink Blue D3	Tornado Red G2	Desert Beige Metallic 1W <sup>1</sup>	Reflex Silver Metallic 8E*	Grey Anthracite Pearl Effect F8*	Bright Green Pearl Effect T3*	Diamond Black Pearl Effect Z4*	Jazz Blue Pearl Effect 1D*	Green Collection Pearl Effect 6F <sup>1</sup>	Indigo Blue Pearl Effect 7D*	Oceanic Green Pearl Effect 8Z*	Berry Red Pearl Effect 9W <sup>1</sup>	
<b>E, S – ‘Airport’ cloth</b>																		
Black	AH	Black	Black	●	●	●	●	●	●	●	●	●	●	●	●	●	●	●
Grey	AJ	Grey	Black/Grey	●	●	●	●	●	●	●	●	●	●	●	●	●	●	●
Beige	AM	Beige	Black/Beige	●	●	●	-	●	-	●	●	●	●	●	●	●	●	●
<b>SE – ‘Motion’ velour</b>																		
Black	CM	Black	Black	●	●	●	●	●	●	●	●	●	●	●	●	●	●	●
Grey	CR	Grey	Black/Grey	●	●	●	●	●	●	●	●	●	●	●	●	●	●	●
Beige	CZ	Beige	Black/Beige	●	●	●	-	●	-	●	●	●	●	●	●	●	●	●
<b>Sports seats in interwoven velour</b>																		
<b>All GTI<sup>2</sup>, V5, V6 4MOTION</b>																		
Black/Anthracite	RD	Black	Black	●	●	●	●	●	●	●	●	●	●	●	●	●	●	●
Black/Red	RE	Black	Black	●	●	-	●	-	●	-	●	-	-	-	-	-	-	●
Grey	RF <sup>2</sup>	Grey	Black/Grey	●	●	●	●	●	●	●	●	●	●	●	●	●	●	●
Beige	RG <sup>2</sup>	Beige	Black/Beige	●	●	●	-	●	-	●	●	●	●	●	●	●	●	●
Black/Blue	RJ	Black	Black	●	●	●	-	-	●	●	-	●	●	-	●	-	-	-
<b>Sports seats in part leather</b>																		
<b>SE<sup>3</sup>, All GTI<sup>4</sup>, V5<sup>4</sup>, V6 4MOTION<sup>4</sup></b>																		
Black	VA <sup>3</sup> /VV <sup>4</sup>	Black	Black	○	○	○	○	○	○	○	○	○	○	○	○	○	○	○
Flannel Grey	VE <sup>3</sup> /VR <sup>4</sup>	Grey	Black/Grey	○	○	○	○	-	○	○	○	○	-	○	○	○	○	○
Beige	VH <sup>3</sup> /VW <sup>4</sup>	Beige	Black/Beige	○	○	○	-	○	-	○	○	○	○	○	○	○	○	○
<b>‘Recaro’ sports seats in part leather</b>																		
<b>All GTI, V5, V6 4MOTION</b>																		
Flannel Grey	VR	Black	Black	○	○	○	○	-	○	○	○	○	○	○	○	○	○	○
Black	VV	Black	Black	○	○	○	○	○	○	○	○	○	○	○	○	○	○	○
Beige	VW	Beige	Black/Beige	○	○	○	-	○	-	○	○	○	○	○	○	○	○	○

● Standard ○ Optional at extra cost - Not available  
 \* Metallic and Pearl Effect paint are optional at extra cost.

<sup>1</sup> Desert Beige 1W, Green Collection 6F and Berry Red 9W are not available on V6 4MOTION models.  
<sup>2</sup> Grey RF and Beige RG are not available on GTI 150 bhp models.  
<sup>3</sup> SE leather upholstery codes are VA, VE and VH.  
<sup>4</sup> All GTI, V5 and V6 4MOTION leather upholstery codes are VV, VR and VW.

## Technical specification.

	<b>E, S</b> 1.4 litre 75 bhp	<b>S, SE</b> 1.6 litre 102 bhp (Automatic only)	<b>S, SE</b> 1.6 litre 105 bhp	<b>GTI</b> 2.0 litre 115 bhp	<b>GTI 1.8T</b> 1.8 litre 20V 150 bhp	<b>V5</b> 2.3 litre 20V 170 bhp	<b>V6 4MOTION</b> 2.8 litre 204 bhp			
<b>Engine:</b>	<i>Front in-line transversely mounted. Hydraulic maintenance-free tappets. Heavy duty cooling system suitable for towing. Electrically driven, thermostatically controlled cooling fan. Light alloy cross flow cylinder head with belt driven double overhead camshaft (single overhead camshaft on 1.6 litre 102 bhp auto)</i>			<i>Front in-line transversely mounted. Hydraulic maintenance-free tappets. Heavy duty cooling system suitable for towing. Electrically driven, thermostatically controlled cooling fan. Light alloy cross flow cylinder head with belt driven double overhead camshaft (single overhead camshaft on 2.0 litre 115 bhp)</i>					<i>(5/6 cylinder 15° 'V' on V5 and V6 engines)</i>	
Number of valves	4 per cylinder	2 per cylinder	4 per cylinder	2 per cylinder	5 per cylinder	4 per cylinder	4 per cylinder			
Cubic capacity, ltrs/cc	1.4/1390	1.6/1595	1.6/1598	2.0/1984	1.8/1781	2.3/2324	2.8/2792			
Bore/stroke, mm	76.5/75.6	81.0/77.4	76.5/86.9	82.5/92.8	81.0/86.4	81.0/90.2	81.0/90.3			
Max. output, bhp/kw at rpm	75/55 5000	102/75 5600	105/77 5700	115/85 5400	150/110 5700	170/125 6200	204/150 6200			
Max. torque, lbs.ft/Nm at rpm	93/126 3300	109/148 3800	109/148 4500	127/172 3200	155/210 1750-4600	162/220 3200	199/270 3200			
Compression ratio	10.5 : 1	10.3 : 1	11.5 : 1	10.3 : 1	9.3 : 1	10.8 : 1	10.5 : 1			
Induction	Electronic multipoint injection, single cylinder injection	Electronic multipoint injection, variable inlet manifold	Electronic multipoint injection, single cylinder injection	Electronic multipoint injection, single cylinder injection	Electronic multipoint injection, single cylinder injection	Electronic multipoint injection, variable inlet manifold	Electronic multipoint injection, variable inlet manifold			
Exhaust emission control	Catalytic converter lambda control	Catalytic converter lambda control	Catalytic converter lambda control	Catalytic converter lambda control	Catalytic converter lambda control	Catalytic converter lambda control	Catalytic converter lambda control			
Fuel grade, minimum	Premium 95 RON unleaded	Premium 95 RON unleaded	Premium 95 RON unleaded	Premium 95 RON unleaded	Premium 95 RON unleaded	Premium 95 RON unleaded	Premium 95 RON unleaded			
Battery, A (Ah)	220 (44)	280 (60)	220 (44)	220 (44)	220 (44)	280 (60)	280 (60)			
Alternator, amps	70	70	70	70	70	70	70			
<b>Transmission:</b>	Front wheel drive 5 speed manual	Front wheel drive 4 speed auto	Front wheel drive 5 speed manual	Front wheel drive 5 speed manual	Front wheel drive 5 speed manual	Front wheel drive 5 speed manual	5 speed auto tiptronic	Four wheel drive 6 speed manual		
<b>Performance (with half payload):</b>										
Top speed, mph (km/h) (where law permits)	106 (171)	115 (185)	119 (192)	121 (195)	134 (216)	139 (224)	137 (220)	146 (235)		
Acceleration, secs 0 - 62 mph	14.0	12.7	10.8	10.5	8.5	8.2	8.9	7.1		
ABI insurance group	4	5, 6	6	10	14	15	15	17		
<b>Environmental information:</b>										
Official fuel consumption according to EU Directive 99/94, mpg/ltr per 100 km										
Urban	31.0/9.1	24.1/11.7	29.7/9.5	25.0/11.3	26.2/10.8	22.6/12.5	20.3/13.9	17.9/15.8		
Extra-urban	51.4/5.5	44.1/6.4	49.6/5.7	45.6/6.2	44.8/6.3	42.2/6.7	38.2/7.4	34.0/8.3		
Combined	41.5/6.8	33.6/8.4	39.8/7.1	34.9/8.1	35.3/8.0	32.1/8.8	28.8/9.8	25.4/11.1		
Fuel tank capacity, galls/ltrs	12.1/55	12.1/55	12.1/55	12.1/55	12.1/55	12.1/55	12.1/55	13.8/63		
Official CO <sub>2</sub> emission, g/km*	163	201	170	194	192	211	235	266		
Noise, dB	73	69	71	72	71	72	73	74		

\* Please see page 85 for further information on CO<sub>2</sub> emissions.

Specifications subject to change without notice. Information correct as at 1 June 2002. Please note: All data subject to manufacturer's tolerances.

## Technical specification.

	<b>E, S</b> 1.4 litre 75 bhp	<b>S, SE</b> 1.6 litre 102 bhp (Automatic only)	<b>S, SE</b> 1.6 litre 105 bhp	<b>GTI</b> 2.0 litre 115 bhp	<b>GTI 1.8T</b> 1.8 litre 20V 150 bhp	<b>V5</b> 2.3 litre 20V 170 bhp	<b>V6 4MOTION</b> 2.8 litre 204 bhp		
<b>Running gear:</b>									
Front axle	McPherson suspension struts and coil springs. Anti-roll bar. Track stabilising steering geometry			McPherson suspension struts and coil springs. Anti-roll bar. Track stabilising steering geometry					
Rear axle	Torsion beam trailing arm with track-correcting bearings and anti-roll bar			Torsion beam trailing arm with track-correcting bearings and anti-roll bar (double wishbones with trailing arms – V6 only)					
Steering	Power-assisted, maintenance-free rack and pinion. Collapsible steering column			Power-assisted, maintenance-free rack and pinion. Collapsible steering column					
Brakes system	ABS with EBD. Diagonally split circuits. Servo assisted			ABS with EBD. Diagonally split circuits. Servo assisted					
Front	Ventilated discs	Ventilated discs	Ventilated discs	Ventilated discs	Ventilated discs	Ventilated discs	Ventilated discs	Ventilated discs	
Rear	Discs	Discs	Discs	Discs	Discs	Ventilated discs	Ventilated discs	Ventilated discs	
Turning circle, ft/m	35.8/10.9	35.8/10.9	35.8/10.9	35.8/10.9	35.8/10.9	35.8/10.9	35.8/10.9	35.8/10.9	
<b>Wheels and tyres:</b>									
Wheel size	6J x 14	6J x 14	6J x 14	6J x 15	6½J x 16	6½J x 16	6½J x 16	6½J x 16	
Wheel type	Steel	Steel	Steel	Alloy 'Avus II'	Alloy 'Montreal II'	Alloy 'Montreal II'	Alloy 'Montreal II'	Alloy 'Brands Hatch'	
Tyre size	175/80 R14T	175/80 R14H	175/80 R14H	195/65 R15V	205/55 R16W	205/55 R16W	205/55 R16W	205/55 R16W	
Spare wheel	Full size steel	Full size steel	Full size steel	Full size steel	Full size steel	Full size steel	Full size steel	Space-saver steel	
<b>Weights, lbs/kgs:</b>									
	5 speed manual	4 speed auto	5 speed manual	5 speed manual	5 speed manual	5 speed manual	5 speed auto tiptronic	6 speed manual	
Unladen weight <sup>†</sup> incl. driver	2792/1266	2924/1326	2889/1310	2919/1324	2928/1328	3008/1364	3127/1418	3356/1522	
Gross vehicle weight	3682/1670	3815/1730	3771/1710	3815/1730	3815/1730	3903/1770	4013/1820	4256/1930	
Payload <sup>†</sup>	891/404	891/404	882/400	895/406	886/402	895/406	886/402	900/408	
Axle load limit: Front	1896/860	2029/920	1985/900	2029/920	2029/920	2117/960	2227/1010	2227/1010	
Rear	1940/880	1940/880	1940/880	1940/880	1940/880	1940/880	1940/880	2183/990	
<b>Trailer load limits, lbs/kgs:</b>									
Braked 12% incline	2205/1000	2646/1200	2646/1200	3087/1400	2867/1300	3308/1500	3308/1500	3308/1500	
Unbraked	1279/580	1323/600	1323/600	1323/600	1323/600	1433/650	1433/650	1544/700	
Towbar load	165/75	165/75	165/75	165/75	165/75	165/75	165/75	165/75	
Max. roof load	165/75	165/75	165/75	165/75	165/75	165/75	165/75	165/75	
<b>Max. luggage capacity, cu.ft (litres):</b>									
	VDA measuring method using 200 x 100 x 50 mm blocks			VDA measuring method using 200 x 100 x 50 mm blocks					
With rear seat upright	11.7 (330)	11.7 (330)	11.7 (330)	11.7 (330)	11.7 (330)	11.7 (330)	11.7 (330)	8.7 (245)	
With rear seat folded	41.8 (1184)	41.8 (1184)	41.8 (1184)	41.8 (1184)	41.8 (1184)	41.8 (1184)	41.8 (1184)	38.7 (1099)	

<sup>†</sup> Figures are calculated in accordance with manufacturer's criteria.

Specifications subject to change without notice. Information correct as at 1 June 2002. Please note: All data subject to manufacturer's tolerances.



## Technical specification.

	<b>E</b> 1.9 litre SDI 68 bhp	<b>S, SE</b> 1.9 litre TDI PD 100 bhp	<b>GT TDI PD</b> 1.9 litre TDI PD 130 bhp	<b>GTI 1.9 PD</b> 1.9 litre TDI PD 150 bhp
<b>Engine:</b>				
	<i>Front in-line transversely mounted. Hydraulic maintenance-free tappets. Heavy duty cooling system suitable for towing. Electrically driven, thermostatically controlled cooling fan. Alloy cylinder head with belt driven single overhead camshaft</i>	<i>Front in-line transversely mounted. Hydraulic maintenance-free tappets. Heavy duty cooling system suitable for towing. Electrically driven, thermostatically controlled cooling fan. Alloy cylinder head with belt driven single overhead camshaft</i>	<i>Front in-line transversely mounted. Hydraulic maintenance-free tappets. Heavy duty cooling system suitable for towing. Electrically driven, thermostatically controlled cooling fan. Alloy cylinder head with belt driven single overhead camshaft</i>	<i>Front in-line transversely mounted. Hydraulic maintenance-free tappets. Heavy duty cooling system suitable for towing. Electrically driven, thermostatically controlled cooling fan. Alloy cylinder head with belt driven single overhead camshaft</i>
Number of valves	2 per cylinder	2 per cylinder	2 per cylinder	2 per cylinder
Cubic capacity, ltrs/cc	1.9/1896	1.9/1896	1.9/1896	1.9/1896
Bore/stroke, mm	79.5/95.5	79.5/95.5	79.5/95.5	79.5/95.5
Max. output, bhp/kw	68/50	100/74	130/96	150/110
at rpm	4200	4000	4000	4000
Max. torque, lbs.ft/Nm	98/133	177/240	228/310	236/320
at rpm	2200-2600	1800	1900	1900
Compression ratio	19.5 : 1	19.0 : 1	19.0 : 1	18.5 : 1
Induction	Direct injection – distributor pump, naturally aspirated	Direct injection – with unit injectors, turbocharged with intercooler	Direct injection – with unit injectors, turbocharged with intercooler	Direct injection – with unit injectors, turbocharged with intercooler
Exhaust emission control	Catalytic converter	Catalytic converter	Catalytic converter	Catalytic converter
Fuel grade, minimum	Diesel	Diesel	Diesel	Diesel
Battery, A (Ah)	340 (70)	340 (70)      380 (80)	340 (70)	340 (70)
Alternator, amps	120	120      70	120	120
<b>Transmission:</b>				
	<i>Front wheel drive 5 speed manual</i>	<i>Front wheel drive 5 speed manual      5 speed auto tiptronic<sup>1</sup></i>	<i>Front wheel drive 6 speed manual</i>	<i>Front wheel drive 6 speed manual</i>
<b>Performance (with half payload):</b>				
Top speed, mph (km/h)	99 (160)	117 (188)      114 (184)	127 (205)	134 (216)
(where law permits)				
Acceleration, secs 0 - 62 mph	17.2	11.3      12.7	9.6	8.6
ABI insurance group	4	8      8	10	14
<b>Environmental information:</b>				
Official fuel consumption according to EU Directive 99/94, mpg/ltr per 100 km				
Urban	39.8/7.1	41.5/6.8      32.5/8.7	39.8/7.1	39.2/7.2
Extra-urban	64.2/4.4	64.2/4.4      54.3/5.2	62.8/4.5	64.2/4.4
Combined	53.3/5.3	53.3/5.3      43.5/6.5	52.3/5.4	52.3/5.4
Fuel tank capacity, galls/ltrs	12.1/55	12.1/55      12.1/55	12.1/55	12.1/55
Official CO <sub>2</sub> emission, g/km*	143	143      176	146	146
Noise, dB	73	74      69	72	74

<sup>1</sup> 5 speed auto tiptronic is not available on S models.

\* Please see page 85 for further information on CO<sub>2</sub> emissions.

Specifications subject to change without notice. Information correct as at 1 June 2002. Please note: All data subject to manufacturer's tolerances.

## Technical specification.

	<b>E</b> 1.9 litre SDI 68 bhp	<b>S, SE</b> 1.9 litre TDI PD 100 bhp	<b>GT TDI PD</b> 1.9 litre TDI PD 130 bhp	<b>GTI 1.9 PD</b> 1.9 litre TDI PD 150 bhp
<b>Running gear:</b>				
Front axle	McPherson suspension struts and coil springs. Anti-roll bar. Track stabilising steering geometry	McPherson suspension struts and coil springs. Anti-roll bar. Track stabilising steering geometry	McPherson suspension struts and coil springs. Anti-roll bar. Track stabilising steering geometry	McPherson suspension struts and coil springs. Anti-roll bar. Track stabilising steering geometry
Rear axle	Torsion beam trailing arm with track-correcting bearings and anti-roll bar	Torsion beam trailing arm with track-correcting bearings and anti-roll bar	Torsion beam trailing arm with track-correcting bearings and anti-roll bar	Torsion beam trailing arm with track-correcting bearings and anti-roll bar
Steering	Power-assisted, maintenance-free rack and pinion. Collapsible steering column	Power-assisted, maintenance-free rack and pinion. Collapsible steering column	Power-assisted, maintenance-free rack and pinion. Collapsible steering column	Power-assisted, maintenance-free rack and pinion. Collapsible steering column
Brakes system	ABS with EBD. Diagonally split circuits. Servo assisted	ABS with EBD. Diagonally split circuits. Servo assisted	ABS with EBD. Diagonally split circuits. Servo assisted	ABS with EBD. Diagonally split circuits. Servo assisted
Front	Ventilated discs	Ventilated discs	Ventilated discs	Ventilated discs
Rear	Discs	Discs	Discs	Discs
Turning circle, ft/m	35.8/10.9	35.8/10.9	35.8/10.9	35.8/10.9
<b>Wheels and tyres:</b>				
Wheel size	6J x 14	6J x 15	6J x 15	6½J x 16
Wheel type	Steel	Steel	Alloy 'Avus II'	Alloy 'Montreal II'
Tyre size	175/80 R14T	195/65 R15T	195/65 R15V	205/55 R16W
Spare wheel	Full size steel	Full size steel	Full size steel	Full size steel
<b>Weights, lbs/kgs:</b>				
	5 speed manual	5 speed manual	5 speed auto tiptronic <sup>1</sup>	6 speed manual
Unladen weight <sup>†</sup> incl. driver	2884/1308	2999/1360	3105/1408	2721/1234
Gross vehicle weight	3771/1710	3881/1760	3991/1810	3925/1780
Payload <sup>†</sup>	886/402	882/400	886/402	TBA
Axle load limit: Front	2007/910	2117/960	2205/1000	2139/970
Rear	1940/880	1940/880	1940/880	1940/880
<b>Trailer load limits, lbs/kgs:</b>				
Braked 12% incline	1874/850	2867/1300		3087/1400
Unbraked	1323/600	1323/600		1323/600
Towbar load	165/75	165/75		165/75
Max. roof load	165/75	165/75		165/75
<b>Max. luggage capacity, cu.ft (litres):</b>				
	VDA measuring method using 200 x 100 x 50 mm blocks			
With rear seat upright	11.7 (330)	11.7 (330)		11.7 (330)
With rear seat folded	41.8 (1184)	41.8 (1184)		41.8 (1184)

<sup>1</sup> 5 speed auto tiptronic is not available on S models.

<sup>†</sup> Figures are calculated in accordance with manufacturer's criteria.

Specifications subject to change without notice. Information correct as at 1 June 2002. Please note: All data subject to manufacturer's tolerances.

## Standard equipment.

### Safety and Security:

		E, E SDI	S, S TDI PD	SE, SE TDI PD	GTI, GT TDI PD	GTI 150 bhp	V5, V6 4MOTION
ABS:	Anti-lock brakes with EBD	●	●	●	●	●	●
Airbags:	Driver's, front passenger's and front seat side impact airbags	●	●	●	●	●	●
Alarm:	Remote control, with interior protection	-	-	●	●	●	●
Body:	Fully galvanised with 12-year anti-corrosion warranty	●	●	●	●	●	●
	Door side impact protection	●	●	●	●	●	●
	Rigid safety cell with front and rear crumple zones	●	●	●	●	●	●
Central locking:	With security protection	●	●	●	●	●	●
Electronic engine immobiliser, coded transponder		●	●	●	●	●	●
ESP:	Electronic Stabilisation Programme – includes EDL (Electronic Differential Lock) and ASR (Traction Control)	●	●	●	●	●	●
Head restraints:	Front and rear outer, adjustable	●	●	●	●	●	●
	Three rear	○	○	○	○	●	●
High level third brake light		●	●	●	●	●	●
Isofix child seat preparation for rear seat, outer positions		●	●	●	●	●	●
Seat belts:	Front height-adjustable seat belts with tensioners	●	●	●	●	●	●
	Rear outer three-point seat belts with tensioners	●	●	●	●	●	●
	Rear centre lap belt	●	●	●	●	-	-
	Rear centre three-point seat belt	○	○	○	○	●	●

### Functional Equipment:

		E, E SDI	S, S TDI PD	SE, SE TDI PD	GTI, GT TDI PD	GTI 150 bhp	V5, V6 4MOTION
Door mirrors:	Internally adjustable with wide angle vision	●	-	-	-	-	-
	on driver's side painted in body colour	●	-	-	-	-	-
	Electrically heated and adjustable with wide angle vision	-	●	●	●	●	●
	on driver's side, painted in body colour with blue tinted glass	-	●	●	●	●	●
Dust and pollen filter		●	●	●	●	●	●
Computer:	Multifunction, single and total journey memories.	-	-	●	●	●	●
	Information given on: Driving time, average fuel consumption, instantaneous fuel consumption, distance driven, average speed and external temperature (with electronic climate control, the external temperature is also shown in the air conditioning display)	-	-	●	●	●	●
Front fog lights:	Integrated within the headlights	○	○	○	●	●	●
Headlights:	Electric height adjustment	●	●	●	●	●	●
Heated rear window		●	●	●	●	●	●
In-car entertainment:	'Beta' radio/cassette, 4 front speakers, detachable roof aerial	●	●	-	-	-	-
	'Gamma' radio/cassette, 8 speakers, detachable roof aerial	-	-	●	●	●	●
	Front-loading single CD player	-	○	●	●	●	-
	CD autochanger, 6 disc, dash-mounted	○	○	○	○	○	●
Multifunction steering wheel including cruise control		-	-	●	○	○	○
Power-assisted steering		●	●	●	●	●	●
Rain sensor and automatic dimming interior rear-view mirror		○	○	○	○	○	●
Sports lowered chassis, 10 mm front/15 mm rear		-	-	-	○	●	○ <sup>1</sup>
Steering column: Height and reach adjustable		●	●	●	●	●	●
Sunroof:	Glass electric slide and tilt with pre-select switch	○	○	○	○	○	○
Tinted rear light and side indicator lights		-	-	-	●	●	●
Warning buzzer for lights if left on		●	●	●	●	●	●
Windows:	Electric front with roll back safety system (3 door)	-	●	-	●	●	●
	Electric front and rear with roll back safety system (5 door)	-	●	●	●	●	●
Wipers:	Front 2 speed with wash/wipe and intermittent wipe with 4 position delay	●	●	●	●	●	●
	Rear screen wiper with automatic wash/wipe	●	●	●	●	●	●

### Interior Equipment and Styling:

		E, E SDI	S, S TDI PD	SE, SE TDI PD	GTI, GT TDI PD	GTI 150 bhp	V5, V6 4MOTION
Anti-dazzle rear-view mirror		●	●	●	●	●	●
Carpet mats:	Front and rear	-	-	-	●	●	●
Cup holder:	Front x 2	-	-	●	●	●	●
	Rear x 2 in the centre console	-	-	-	●	●	●
Fuel filler flap:	With remote locking	●	●	●	●	●	●
Gear knob, leather/wood		-	-	-	-	●	● <sup>2</sup>
Heating:	Air blending and ventilation system with four speed fan	●	●	●	●	●	●
	Air conditioning, manual	○	●	●	-	-	-
	Air conditioning, electronic climate control	-	○	○	●	●	●
Instruments:	Speedo and rev counter, electronic odometer, trip and service interval display, digital clock, fuel and temperature gauge	●	●	●	●	●	●
Instrument lighting, blue adjustable panel illumination		●	●	●	●	●	●
Interior lighting: Reading lights x 2		●	●	●	●	●	●
Load sill protection		●	●	●	●	●	●
Seating:	Front driver's with height adjustment	●	●	-	-	-	-
	Front driver's and passenger height adjustment	-	-	●	●	●	●
	Easy entry (3 door only)	-	-	●	●	●	●
	1/3 to 2/3 split folding rear seats	●	●	●	●	●	●
	Front sports seats with height adjustment	-	-	-	●	-	●
	Front sports seats with height and lumbar adjustment	-	-	-	-	●	-
	Front seat centre armrest	-	-	●	●	○	●
	Rear seat centre armrest (5 door only)	-	-	●	●	●	●
Steering wheel:	Three-spoke leather rim	-	-	-	●	●	●
Storage:	Illuminated glove compartment with lockable lid on passenger side	●	●	●	●	●	●
Upholstery:	'Airport' cloth	●	●	-	-	-	-
	'Motion' velour	-	-	●	-	-	-
	Interwoven velour	-	-	-	●	●	●
Vanity mirrors:	Illuminated on driver's and passenger's side	●	●	●	●	●	●
Wood inserts for centre console, front ashtray lid and inside door handles		-	-	-	-	●	● <sup>2</sup>

### Exterior Equipment and Styling:

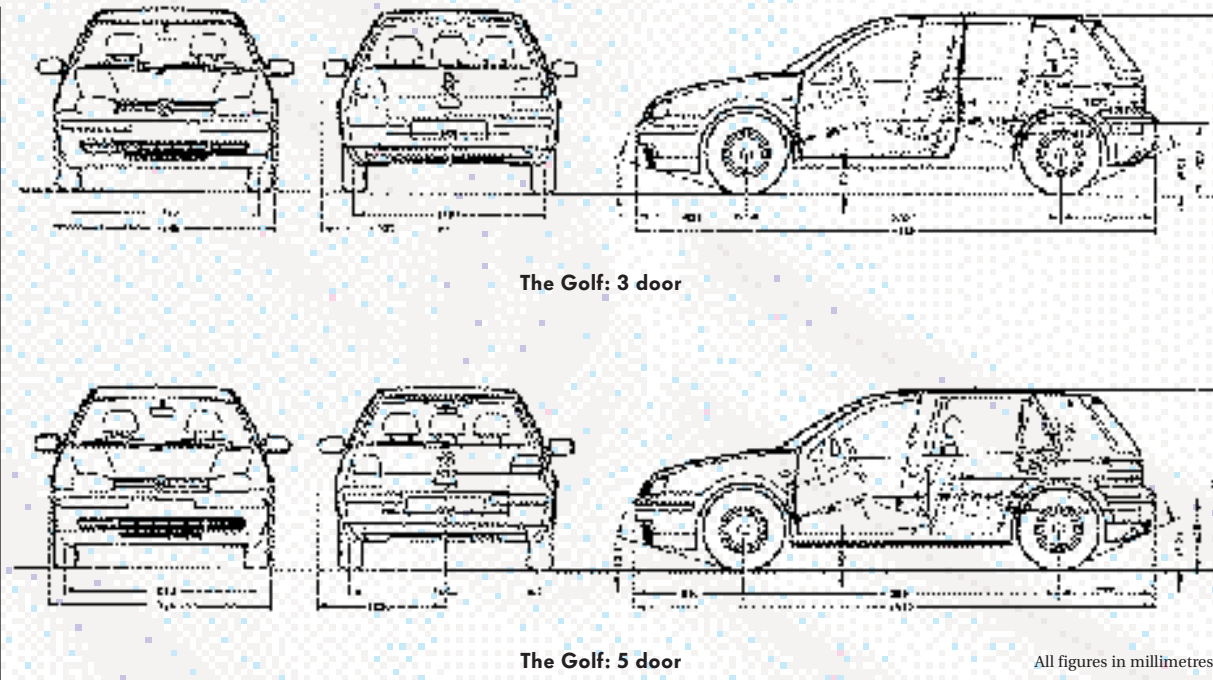
		E, E SDI	S, S TDI PD	SE, SE TDI PD	GTI, GT TDI PD	GTI 150 bhp	V5, V6 4MOTION
Bumpers:	Painted in body colour with black bump strip	●	●	●	-	-	-
	Painted in body colour with body-coloured bump strip	-	-	-	●	●	●
Green tinted glass		●	●	●	●	●	●
Wheels:	6J x 14 steel including spare with full size wheel trims with 175/80 R14 tyres	●	●	●	-	-	-
	6J x 15 steel including spare with full size wheel trims with 195/65 R15 tyres	-	● <sup>3</sup>	● <sup>3</sup>	-	-	-
	Four 6J x 15 'Avus II' alloys inc. spare steel wheel and anti-theft wheel bolts with 195/65 R15 tyres	○	○	○	●	-	-
	Four 6½J x 16 'Montreal II' alloys inc. spare steel wheel and anti-theft wheel bolts with 205/55 R16 tyres	-	-	-	-	●	● <sup>4</sup>
	Four 6½J x 16 'Brands Hatch' alloys inc. temp. space-saver spare steel wheel and anti-theft wheel bolts with 205/55 R16 tyres	-	-	-	-	-	● <sup>2</sup>

● Standard ○ Optional - Not available

<sup>1</sup> Not available for V6 4MOTION <sup>2</sup> V6 4MOTION only <sup>3</sup> TDI PD models only <sup>4</sup> V5 only



## Exterior dimensions.



Specifications subject to change without notice. Information correct as at 1 June 2002. Please note: All data subject to manufacturer's tolerances.

## Glossary.

### ABS (Anti-lock Braking System)

The ABS system prevents the wheels from locking during heavy or emergency braking, enabling the vehicle to remain steerable. When braking, wheel speed sensors measure the road wheel speed and, should one or more wheels start to lock, the system reduces brake pressure to that wheel.

### ASR (Anti-Slip Regulation)

ASR is a switchable traction control system that prevents the driven wheels from spinning under acceleration by reducing engine torque. It is active at all speeds.

### EDL (Electronic Differential Lock)

EDL improves driving and steering characteristics when accelerating on road surfaces where each wheel has a different degree of traction. The system operates automatically and is combined with the ABS system. Using the ABS wheel sensors, EDL monitors the speed of the individual driving wheels. When a difference in driving wheel speed is detected (i.e. when one wheel starts to spin due to differences in road surfaces, e.g. due to water or ice), the system brakes the spinning

## Glossary (continued).

wheel, transferring engine power to the wheel with the best traction.

EDL is active in both forward and reverse.

### Electronic Engine Immobiliser

Each car has a unique 'code transponder' fitted within the ignition key. When an attempt is made to start the engine, the engine management system interrogates the transponder and if the incorrect code is received (i.e. the wrong key is used), the engine will not run.

### EON (Enhanced information concerning Other Networks)

Ensures that all traffic announcements within a traffic programme area are put through.

### ESP (Electronic Stabilisation Programme)

ESP is designed to stabilise the dynamic handling response of the vehicle by counteracting any tendency towards oversteer or understeer. The ESP constantly compares the actual movement of the vehicle with predetermined values and, according to the situation, ESP reacts by braking the outer front or inner rear wheel (according to direction of slip) and automatically adjusting the engine's output.

### RDS (Radio Data System)

The radio receiver uses additional data sent by the station to display the name of the station you are listening to and, given poor reception, it will retune the selected station to an alternative frequency if available. The system can also provide local traffic reports, interrupting the current station, CD or cassette if required.

### 4MOTION with 'Haldex' Coupling

4MOTION is a new four wheel system which includes the 'Haldex' coupling mounted in the rear axle. This 'Haldex' coupling contains an electronically and hydraulically controlled multiplate clutch that allows the engine power to be transferred to the wheels with the best traction. The coupling constantly regulates distribution of the drive between the front and rear axles and, because the system is electronically controlled, it gives the optimum traction for most driving situations. The advantages of the 4MOTION system are as follows:-

Front wheel drive characteristics, very quick response, no drive train 'wind-up' when parking, compatible with different tyre sizes (e.g. space-saver temporary spare wheel). Allows car to be towed with the axle raised off the ground.



## Volkswagen service

for your *peace* of mind.

### The Volkswagen Warranty.

#### 3-year Warranty.

All Volkswagen Golfs now come with a 3-year/60,000 miles warranty, which protects your car against the failure of most mechanical and electrical components due to manufacturing defects. This comprises a 2-year manufacturer's warranty with unlimited mileage plus a further 1-year/60,000 miles (whichever is soonest) Retailer Warranty. Should the mileage exceed 60,000 miles within the first two years, the manufacturer's 2-year warranty will still be valid. If an additional warranty for subsequent years or higher mileage is desired, it may be purchased from any authorised Volkswagen retailer; however, this additional warranty must be purchased before the mileage reaches 59,999. Cover is subject to the car being serviced and maintained at an authorised Volkswagen retailer according to the manufacturer's recommendations. Full details of the 3-year warranty are available from your Volkswagen retailer. This 3-year warranty is only available on vehicles purchased in the UK through an authorised Volkswagen retailer.

#### 3-year Paint Warranty.

The paintwork of the Golf is covered against manufacturing defects for a period of 3 years. Naturally, the Golf must be cared for in compliance with the operating instructions which will be found in your vehicle handbook. Please consult your Volkswagen retailer for full warranty details.

#### 12-year Body Protection Warranty.

The internal body sections and panels of the Golfs are covered against rusting through from the inside for a period of 12 years. Naturally, the Golf must be cared for in compliance with the operating instructions. Please consult your Volkswagen retailer for full warranty details.

#### Service Intervals for Petrol and Diesel Engines.

Volkswagen has always been dedicated to protecting the environment. That's why many Volkswagen Golfs now come with a choice of service schedules – Extended and Variable Service regimes.

Your vehicle will be set to operate on Extended Service, which means an oil service is required at 10,000 miles or 12 months (whichever is sooner) with a main service required at 20,000 miles or 24 months (whichever is sooner).

Some engines can also be set to run on the Variable Service regime. Please contact your Volkswagen retailer for further information.

#### Approved Accessories.

A comprehensive range of accessories from alloy wheels to carpet mats is available to complement the factory-fitted option list. Volkswagen Approved accessories purchased from and fitted by your Volkswagen retailer at the point of vehicle sale will also benefit from the 3-year vehicle warranty.

#### Volkswagen Insurance.

Competitive insurance premiums are available to Volkswagen owners through Volkswagen Insurance Service (Great Britain) Limited. Volkswagen Insurance guarantee that all repair work is undertaken by an authorised Volkswagen retailer using only genuine parts, thus ensuring that the manufacturer's warranties remain in force. For a quotation, telephone Linkline: 0845 600 8006.

#### Extended Warranty.

You may purchase additional protection from your retailer or contact 0870 9000 115.

#### Volkswagen Finance.

Volkswagen Finance offers a dedicated service to meet the needs of both the business user and the private motorist. We can help you choose the right type of finance and will tailor the package to meet your specific requirements. Please consult your Volkswagen retailer for details.

#### Volkswagen Assistance.

Every new car is registered for Volkswagen Assistance for 1 year. This provides vehicle recovery in the unlikely event of a breakdown (subject to conditions). Volkswagen Assistance can also be purchased for subsequent years. For full details, please contact your Volkswagen retailer.

#### Tax Free Sales.

For full details, please contact your Volkswagen retailer.

#### CO<sub>2</sub> Emission.

The weight of a vehicle will influence the level of CO<sub>2</sub> emission it produces; as a result, vehicles with higher levels of specification and factory-fitted options may emit higher levels of CO<sub>2</sub>.

The CO<sub>2</sub> figure quoted for each vehicle is the maximum possible. The unladen weight of the vehicle is calculated by range at the time of manufacture and the maximum possible CO<sub>2</sub> emission for that weight range is applied according to the Council Directive 80/1268EEC as amended by Commission Directive 1999/100/EC on the approximation of the laws of the member states relating to the carbon dioxide emissions and the fuel consumption of motor vehicles.

#### Please Note:

Some illustrations in this brochure do not necessarily reflect UK specifications and may not be available. Consequently, controls and some items of equipment are positioned differently for the UK.

The specifications contained in this brochure are for information purposes only and are subject to change. If you require any specific feature, you must consult your Volkswagen retailer who is regularly updated with any change in specification. Please check model availability and full specification details with your Volkswagen retailer prior to ordering.

All vehicles fitted with accessories in this brochure have been registered.

The TDI® is a registered trademark of VOLKSWAGEN AG.

#### Note:

We would like to advise you that telephone calls to Volkswagen Customer Care may be monitored and recorded as part of our training and quality assurance processes. All our monitoring and recording processes meet Ofcom regulations.



*To experience*

*the Golf for yourself -*

*contact your local Volkswagen retailer.*



Model shown is GTI.