

Volkswagen Information Service. Telephone 0800 333 666

Internet: www.volkswagen.co.uk

© Volkswagen Group United Kingdom Limited 2002.

Issue: 18 July 2002. Printed in UK.

PVW010PA



The Passat Estate

2003 Model Year

PASSAT



19T

Passat

The *beautifully*
crafted Passat.



Model shown is the Passat Estate SE.



The Passat Estate.

6 *Philosophy*

10 *Interior Design*

14 *Luggage Area*

22 *Safety*

28 *Engines*

34 *Quality*

40 *The Passat Estate S*

42 *The Passat Estate SE*

44 *The Passat Estate Sport*

46 *The Passat Estate 'V' range*

48 *Optional Equipment*

56 *Accessories*

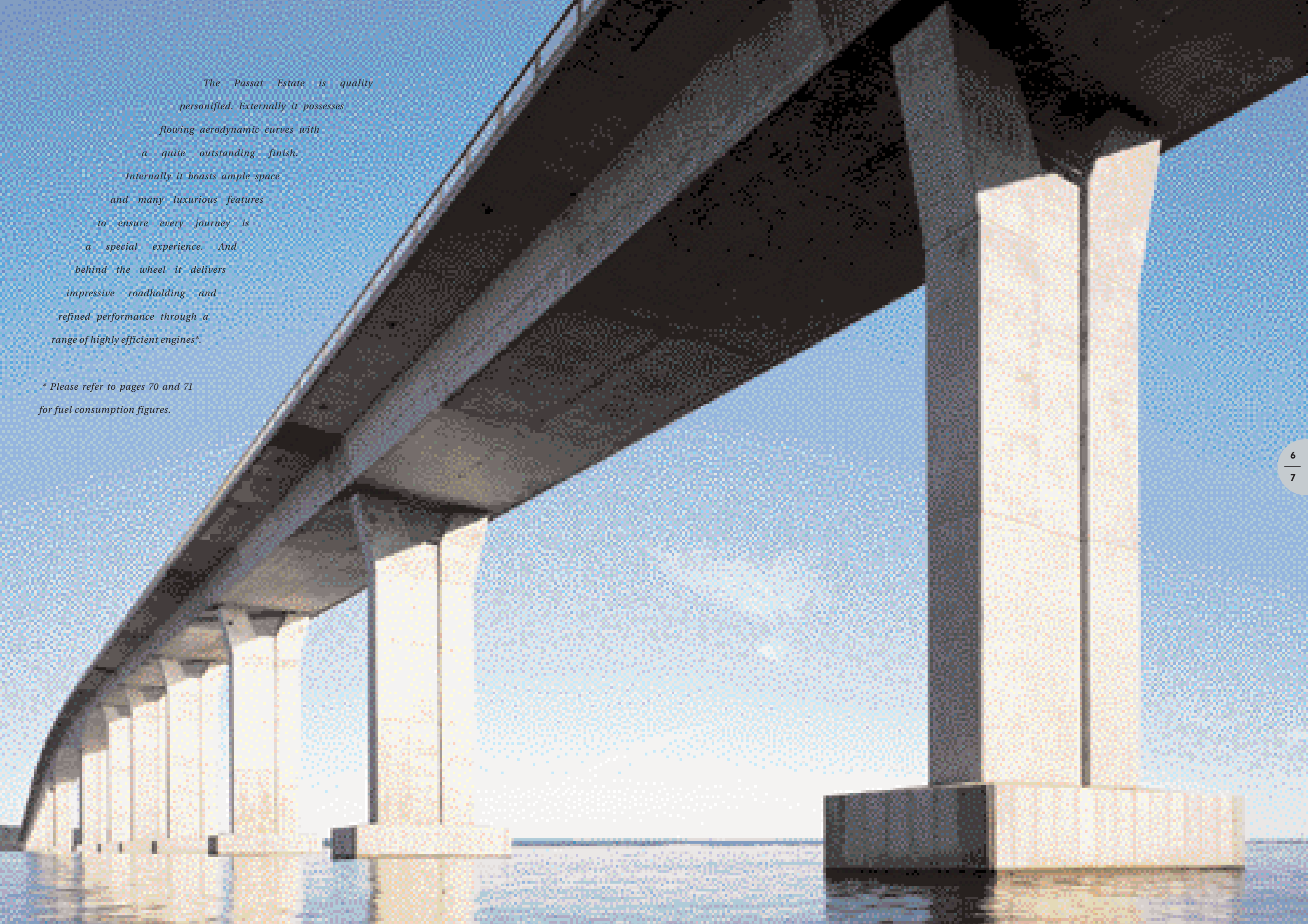
62 *Colours and Upholstery*

70 *Technical Specification*

74 *Standard Equipment*

76 *Glossary and Dimensions*

78 *Volkswagen Service*



The Passat Estate is quality personified. Externally it possesses flowing aerodynamic curves with a quite outstanding finish. Internally it boasts ample space and many luxurious features to ensure every journey is a special experience. And behind the wheel it delivers impressive roadholding and refined performance through a range of highly efficient engines.*

** Please refer to pages 70 and 71 for fuel consumption figures.*



Model shown is the Passat Estate V5.



The perfect design

through *evolution*.



Why is it that some cars make you instantly feel at home? As if it has been designed especially for you? The answer is quite simple – superb ergonomics. And the Passat Estate is a fine example.

The first things you'll notice are the shape and firmness of the seats. Their contoured and moulded design provides greater support to the spine for comfort, even on the longest journeys.

Once in the driver's seat, you'll realise the second important contribution of ergonomic design – positioning. All the instruments are clearly visible to provide fast information and, likewise, all the switches are where you intuitively expect them, close at hand.

Ergonomic design is complemented by aesthetic beauty. Here you'll observe the illumination

of the instrument dials where blue lighting is complemented by red needles. The final visual touches to the Passat Estate emphasise its high quality. Such as chrome-plated instrument surrounds, stylish and durable seat fabrics and, on the 'V' range, Alcantara/leather upholstery with aluminium or wood trim.

Interior shown is V6 4MOTION with optional wooden steering wheel and gear knob, and navigation/radio system.



Ample space and contoured seats provide great comfort for rear seat passengers.



By adjusting the height of the driver's seat and length of the steering column, you can achieve the ideal driving position.



For SE models and above, lumbar support in the front seats is standard.

Space is a wonderful feeling.





Model shown is the Passat Estate SE.



Extremely practical: The folding rear seat backrest and seat base split 1/3 to 2/3 to accommodate both passengers and luggage.



Spacious: With the rear seats folded, you can carry loads up to 1.8 metres in length.



Added security: The standard luggage cover protects your possessions from unwanted attention.

There are many reasons for choosing a Passat Estate, but one of its most impressive attributes is its internal space and versatility.

With the rear seats positioned upright, the Passat Estate provides a generous 495 litres of luggage capacity. But fold down the rear seats and you can open up an enormous 1,600 litres* of capacity.*

It's not just about space, it's how it can be utilised. Here the Passat Estate benefits from 1/3:2/3 split folding rear seats so that you can carry rear seat passengers in addition to cumbersome luggage.

When the rear seats are folded down, the rear head restraints can be stored in holes situated at the back of the rear seat base.

** On 4MOTION models the luggage capacity is 450 litres with the rear seats upright and 1,545 litres with them folded down.*



Chrome-plated roof rails highlight the exceptional specification of the 'V' range.

The Passat Estate impresses in many ways, but it's the attention to detail that sets it apart from the competition.

For example, a number of features combine to make loading and unloading as simple as

possible. Like a low rear loading edge, the high opening rear tailgate and the flat loading area complete with loading rails. To help protect your Passat Estate from any damage, there are protective coverings to the most vulnerable areas.

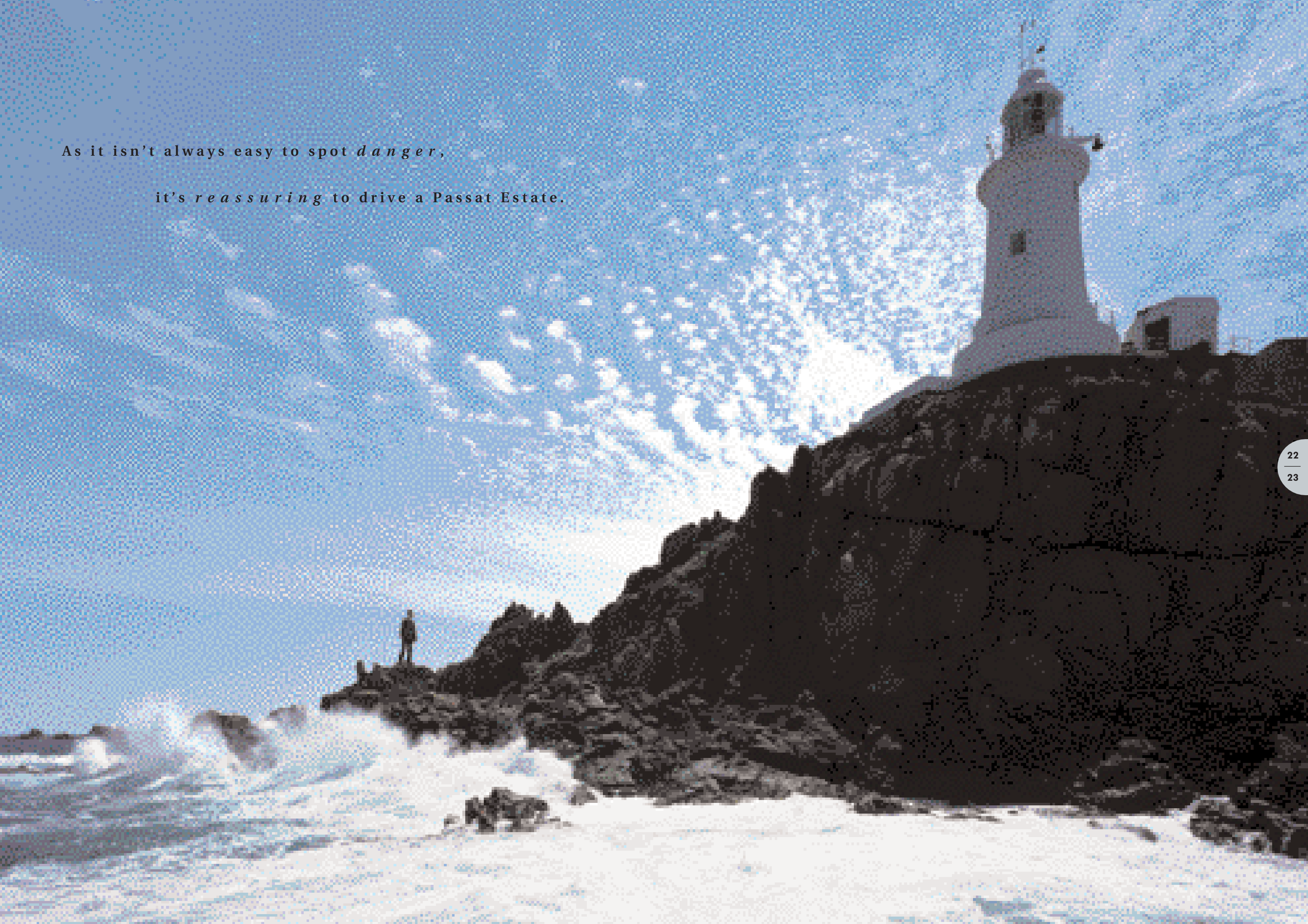
Security is also of prime importance, so the Passat Estate is fitted with a removable retracting luggage cover as standard.

Externally, the dynamic lines of the Passat Estate are emphasised by the standard fitment of roof rails. These are finished in black on the S, SE and Sport models and chrome-plated on the 'V' range. By adding a

variety of attachments, available from your Volkswagen retailer, you can carry anything from bikes to surfboards.

The Passat Estate is more than just a car, it's part of your lifestyle.

As it isn't always easy to spot *d a n g e r*,
it's *r e a s s u r i n g* to drive a Passat Estate.





For someone who is on the road daily, the one thing that counts above all, besides comfort and performance, is safety. On the Passat Estate, a wealth of notable safety features combine to provide protection.

To start with, there's a four-link front axle, an integrated rear axle and additional stabilisers front and rear. The result is not just a smooth and comfortable drive, but also precise steering in and out of curves. With disc brakes all round, an Anti-lock Braking System (ABS) including Brake Assist System (BAS) and Electronic Brake-pressure Distribution (EBD), we've made sure that your Passat Estate remains steerable when braking in most hazardous conditions.

Across the Passat Estate model range, an Electronic Stabilisation Programme (ESP) is standard. This intelligent system compares the actual vehicle movement with predetermined values. If the system recognises a major variation, it reacts by applying the brakes to individual wheels and automatically adjusting the engine's power output helping to correct oversteer, understeer and loss of stability of the vehicle.

The ESP package includes Electronic Differential Lock (EDL) and Anti-Slip Regulation (ASR).

However, this additional safety feature is no excuse to drive recklessly because, despite its proven quality, ESP cannot dispense with the laws of physics.



The Electronic Stabilisation Programme – ESP – helps to prevent losing control in unstable driving conditions.

Driving a car is a great responsibility – not just to the environment and other road users, but to yourself and your passengers. Thankfully, the Passat Estate provides valuable assistance.

In the unfortunate event of an accident, the bodywork is constructed with crumple zones that are designed to absorb impact energy. These crumple zones help to protect the inner survival cell and reduce occupant injury.

The second most common accident involves side impact. The Passat Estate is, therefore, equipped with reinforced chassis columns, energy absorbing protection padding and side impact bars fitted in every door.

In addition to these safety features, you and your passengers are protected by six airbags. Standard on every Passat Estate are two front and two side airbags to protect the driver and front seat passenger. Two additional curtain airbags are fitted to cushion both front and rear seat occupants. These airbags are situated overhead and cover the front and rear side windows to provide added protection around the head.

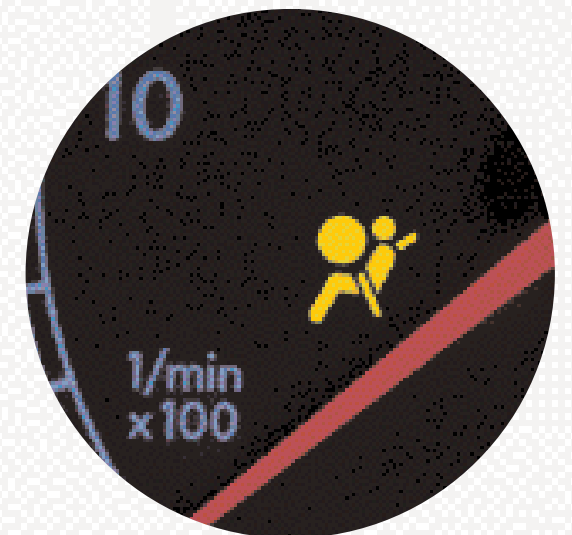
For added comfort and safety, the front seat belts are height-adjustable. And the front and the three rear seat belts are three-point belts, fitted with pre-tensioners.



Two curtain airbags are fitted to provide added protection for both front and rear occupants.



ABS sensors constantly monitor all wheel movements.



The airbag safety system reacts in milliseconds.

It's not just about generating power,

it's about *efficient* utilisation.



Model shown is the Passat Estate Sport.



The engine of today needs to be highly accomplished to provide a blend of smooth acceleration, relaxed motorway cruising, quietness of operation and low fuel consumption. All these virtues have been taken into account when developing the range of petrol engines available for the Passat Estate.*

You can choose from four petrol engines to suit your performance and budget requirements, starting with a 2.0 litre 130 bhp or a 1.8 litre 20V Turbo 150 bhp available for the Passat S, SE and Sport models.

The Passat V5 is equipped with a powerful five cylinder 2.3 litre engine. Thanks to four valve per cylinder technology, it produces an inspiring 170 bhp to deliver impressive all-round performance.



The smooth and powerful V6 with 2.8 litre capacity.

At the top of the petrol range sits the outstanding V6 with a mighty 193 bhp output. The manual version of this 2.8 litre engine not only accelerates the Passat Estate from 0 - 62 mph in 8.0 seconds, it cruises effortlessly and can reach 144 mph where the law permits. Equally impressive is the torque of the V6 - 280 Nm at just 3,200 rpm. This means plenty of pulling power, even at low engine revs.

The 2.8 litre V6 is also equipped with 4MOTION - a permanent four wheel drive system. This system allows the infinitely variable distribution of the drive, providing optimum traction for most driving situations.

All petrol engines are fitted with a 5 speed manual gearbox and, with the exception of the 2.0 litre 130 bhp, the option of a 5 speed automatic tiptronic.

** Please refer to pages 70 and 71 for fuel consumption figures.*



Few areas of automobile technology have advanced as much as Volkswagen's diesel engines in the last few years. The Volkswagen range is a perfect example of how a modern diesel can provide good performance, smooth running and exceptional fuel economy.*

One of the reasons for Volkswagen's fine range of diesels is the introduction of the 'Pumpe Düse' pump injection system. It injects the fuel at extremely high pressure, up to 2,020 bar, direct into the combustion chamber. In this way the energy can be generated more efficiently, boosting performance and lowering fuel consumption.

Turbocharging has also been a key development in the increasing popularity of diesels, providing better performance and added torque, even at lower engine revolutions.

With the Passat Estate you have a choice of three TDI engines. The S and SE models have two 1.9 litre diesels available,

generating 100 bhp and 130 bhp. The 1.9 litre TDI PD 130 bhp is also available in the Passat Estate Sport, but with the added advantage of a 6 speed manual gearbox and increased torque.

The flagship Passat Estate TDI is powered by a lively 2.5 litre V6 diesel that generates 150 bhp. Linked to a 6 speed manual gearbox, it is capable of 0 - 62 mph in 9.8 seconds and a top speed of 133 mph, where the law permits. Its fuel consumption is equally impressive as it can return 39.2 mpg over the Combined fuel cycle.*

Should you prefer an automatic transmission, you can choose a 4 speed version for the TDI PD 100 bhp or a 5 speed tiptronic for the TDI PD 130 bhp and V6 TDI.

** Please see pages 70 and 71 for fuel consumption figures.*

Technology you can *rely* on.





Clear headlights help
create a stylish finish.

The underlying philosophy of the Passat Estate is quality. And this is clearly evident by its design, build and roadholding. It also ensures that your Passat Estate will continue to provide you with comfort and performance for many years to come.

Such quality is partly achieved through the design and construction methods employed. For example, large parts of the body are manufactured in one piece for extra strength. And where parts are added, they are attached using computer controlled laser welding wherever possible.

Consider the addition of cross and length supports and it's

easy to understand how the Passat Estate achieves its immense rigidity. Such strength has many benefits – it feels taut through corners, it has greater longevity and it helps protect the occupants in the event of an accident.

To help prevent corrosion, the Passat Estate is fully galvanised. It's part of the reason why every Passat Estate is covered by a 12-year body protection warranty for added peace of mind.

The precise fit of the panels accentuates the exceptional quality of the Passat Estate.

Fulfil your expectations.



Model shown is the Passat Estate SE with optional leather upholstery and Bi-Xenon headlights including headlight washers.



The Passat Estate S.

Take a seat behind the wheel of the Passat Estate and you'll soon appreciate its quality in depth. The steering wheel is adjustable for height and reach, which combines with the height-adjustable front seats to help

achieve an ideal driving position. Sitting comfortably? Then look around and savour the extensive equipment, all fitted as standard. Like electronic climate control, electrically heated and adjustable door mirrors, electric front and

rear windows, front head restraints, three rear head restraints with rear seat centre three-point seat belt, heat insulating tinted glass, a multifunction computer and

Interior shown is S.

a 'Gamma' radiocassette player with RDS, 8 speakers and a roof aerial. The list goes on with power steering, an alarm with interior protection, remote control central locking, an electronic engine

immobiliser, rear seat armrest, a remote interior fuel flap and boot opener, a split folding rear seat base and backrest, an Electronic Stabilisation Programme (ESP) and a curtain airbag system.



Roof-mounted airbags help protect the head from injury during a side impact.

Interior shown is SE.

The Passat Estate SE.

With the Passat Estate SE, you gain a few more features for your comfort and convenience. Such as a single CD player, lumbar support for the driver and front seat passenger and a driver's centre armrest with storage compartment.

The stylish interior of the SE is furnished with sumptuous 'Leon' velour upholstery available in either Black, Flannel Grey or Beige. Externally, the SE can be distinguished by 15 inch 'Wellington' alloy wheels and chrome side window surrounds.



The front centre armrest includes a convenient storage compartment.



'Wellington' 15" alloy wheels with 205/60 R15 tyres are standard on the SE.





The Passat Estate Sport.

Throughout the Passat Estate Sport, its exuberant character shows through. Its interior is trimmed with chic 'Primero' flock upholstery and includes supportive front sports seats complete with height adjustment and lumbar support.

There's a leather rimmed three-spoke steering wheel, plus an aluminium finish to the dash trim, ashtray lid and interior door handles.

Head out on the open road and you'll also notice a few other additions that add to the appeal

of the Passat Estate Sport.

Like sports suspension, 16 inch 'Road America' alloy wheels, rain sensitive windscreen wipers, an automatic dimming interior rear-view mirror and a 6 disc dash-mounted CD autochanger.

Interior shown is Sport with optional perforated leather sports seats and navigation/radio system.



A rain sensor regulates the speed of the wipers depending on the weather.



'Road America' 16" alloy wheels with 205/55 R16 tyres are standard on the Sport.



The dash-mounted 6 CD autochanger provides hours of uninterrupted listening pleasure.



The Passat Estate 'V' range.

The Passat Estate 'V' range epitomises Volkswagen's fine engineering with a choice of three performance orientated engines. There's the V6 TDI which develops a healthy 150 bhp to combine power with the exceptional fuel economy* associated with diesels.

Or you could choose one of two superb petrol engines – the V5 2.3 litre 170 bhp or the V6 4MOTION 2.8 litre 193 bhp. Whichever you choose, you won't be disappointed.

To complement these engines, the 'V' range provides the highest specification in the Passat Estate range. Externally, you can choose Metallic or Pearl Effect paint at no extra cost. With body-coloured bumper strips and side bump strips with chrome inserts and 16 inch 'Road America' alloy wheels also standard, the 'V' range is visually distinctive. Its exclusive appeal continues inside with Alcantara/leather seats, front and rear textile carpet mats, plus aluminium or wood trim across the dash, ashtray lid and interior door handles.

Interior shown is 'V' range with optional navigation/radio system.

The V6 4MOTION benefits from a permanent four wheel drive system that allows the engine power to be transferred to the wheels with the best traction.

* Please see pages 70 and 71 for fuel consumption figures.



The body-coloured bumper strips and side bump strips with chrome inserts give the 'V' range a distinctive look.



Heated front seats and windscreen washer jets provide greater comfort over the winter months.

With a *diverse* range of options, your Passat Estate
can be as *individual* as you are.





Standard on Sport and 'V' range, the dash-mounted 6 CD autochanger is available as a factory-fitted option on all other models.

CD autochanger

The 'Gamma' radio/cassette unit can be linked to a dash-mounted 6 CD autochanger, to provide uninterrupted listening pleasure, even on the longest journeys. This CD autochanger can hold 6 CDs for hours of music listening without the hassle of feeding in new CDs. Available for S and SE models.

Digital Sound Processor (DSP)

With DSP you will experience a new dimension to your music collection. Its pre-programmed settings allow you to recreate environments from a concert hall to an intimate jazz club. And with flexible settings, it can cater for your personal tastes – from Rock to Classical.



The Digital Sound Processor creates the ideal listening environment, whatever your choice of music.

Single CD player

You can now enjoy your favourite CD collection in crystal clear digital sound. This front-loading CD system sits neatly under the existing radio. Available for S models.



Clear and simple: The CD player.

Please note the separate front-loading single CD player, dash-mounted 6 CD autochanger, DSP or navigation/radio systems are not available in conjunction with each other.

Navigation systems

The combined satellite navigation and radio unit, with colour screen, offers route guidance via the display of road maps, route information, spoken instructions and visual arrow symbols in the centre of the instrument panel. Radio

functions and control of the 6 CD boot-mounted autochanger (if fitted) are also provided. The navigation CD reader is mounted in the top of the unit. Please note that the unit will only accept the navigation CDs and NOT audio CDs.



The navigation/radio system shows full colour maps to confirm your route.



Navigation, radio and CD player in one unit with monochrome screen.

Alternatively, you can choose the monochrome navigation system, radio and CD player in one unit. Route guidance is supplied via arrow symbols in both the unit and a display in the centre of the instrument panel, together with audible recommendations. The CD slot can be used for music CDs when the navigation system is not

in use. In addition, this system will also operate the optional 6 CD boot-mounted autochanger.

Please note the separate front-loading single CD player, dash-mounted 6 CD autochanger, DSP or navigation/radio systems are not available in conjunction with each other.

Winter pack

The coldest months are the most difficult to drive in, so the Winter pack provides some welcome relief. The heated front seats have five temperature settings and can be individually

controlled. The Winter pack also provides added safety with heated windscreen washer jets to help prevent them freezing. Available for S, SE and Sport models.



The comfort of heated seats forms part of the Winter pack.



Bi-Xenon headlights improve road illumination for added safety.

Bi-Xenon headlights

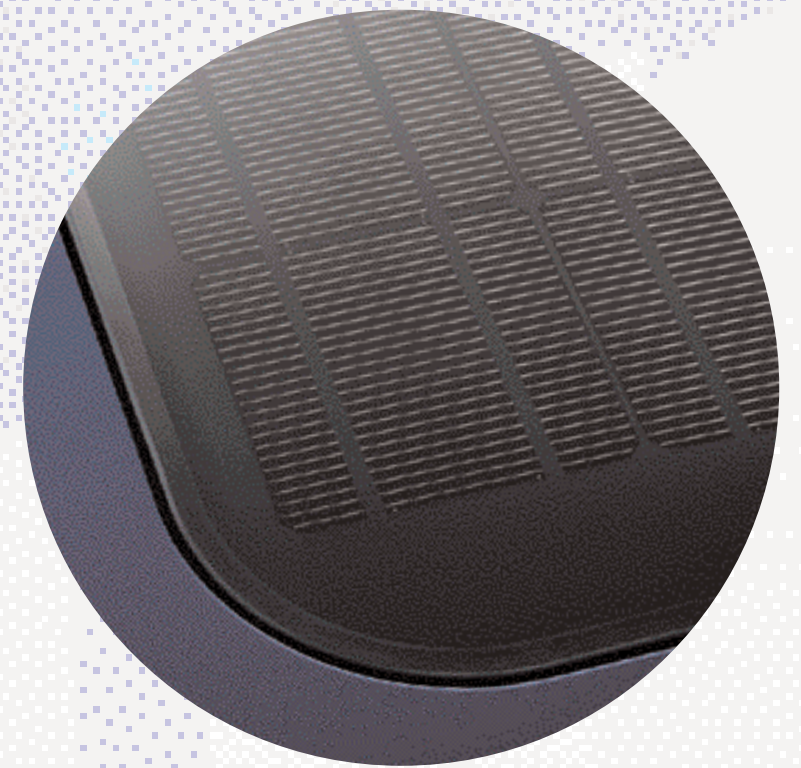
Bi-Xenon headlights use gas discharge technology to produce a much clearer and brighter light which illuminates the road ahead more evenly.

This option also includes a headlight cleaning device and a dynamic reflector control to reduce the dazzle for oncoming drivers.

Solar roof

Have you ever returned to your car during the summer and been faced with an almost unbearable interior heat? Well, why don't you consider this ingenious solar roof?

Whilst it operates as a normal electrically operated sliding sunroof, it also helps cool your car when it's left in direct sunlight. Solar cells power the interior fans so that your interior is cooled without running down your battery.



Solar energy can help cool your car when it's left in direct sunlight.

Wheels

Four alternative designs are available to create a distinctive and individual finish to your Passat Estate.

All wheels are designed and constructed to the highest standards and are fitted with anti-theft wheel bolts.



Dynamic 'Wellington' 15" alloy wheels with 205/60 R15 tyres. Available for S models.



Elegant 'Road America' 16" alloy wheels with 205/55 R16 tyres. Available for S and SE models.



Stylish 'Donington' 17" alloy wheels with 225/45 R17 tyres. Available for Sport and 'V' range models.



Sporty 'Phoenix' 17" alloy wheels with 225/45 ZR17Y tyres. Available for Sport and 'V' range models.



Preparing your car to carry children needn't be a lengthy operation.

Integrated child seats

By simply folding back and raising the normal seat, a child can use the normal three-point seat belts. It provides effective protection and is positioned in seconds.

The integrated child seat is suitable for children classified by ECE-R¹ 44/03 standard in Group 1 (9-18 kg), Group 2 (15-25 kg) and Group 3 (22-36 kg).

We recommend, however, that the child seat only be used for children as of the age of 2 years.

Please note that children in Group 1 require a special restraining table which has been approved for use with the integrated child seat and which is available from your Volkswagen retailer (see page 61).

¹Economic Commission of Europe – Regulation.



The elegant finish of the leather pack.

Steering wheels

A choice of steering wheels is available to add a touch of individuality and comfort to your driving. The leather pack is the affordable way to create a classic finish. It includes hand-stitched leather across the four-spoke steering wheel, handbrake lever grip, gear lever and gaiter. This option is available on S and SE models.



A wood/leather trimmed steering wheel and gear knob provide a traditional finish.

Alternatively, you can specify a three-spoke wood/leather steering wheel with a matching gear knob. Available for Sport and 'V' range models.

Weather pack

This pack includes two innovative features. Rain sensitive windscreen wipers receive feedback from a screen sensor and adjust the speed of the wipers accordingly. The automatic dimming interior rear-view mirror darkens if a following car's lights are too high.



A multifunction steering wheel is a stylish and practical addition with its conveniently located controls.

Multifunction steering wheel

The multifunction steering wheel with cruise control allows you to operate the cruise control and radio controls without taking your hands off the wheel. For a comfortable grip it is trimmed in leather.



The rain sensor automatically switches on the wipers when it rains. Available for S and SE models.



A glass electric sunroof provides a refreshing atmosphere.

Electric glass sunroof

This sunroof is easy to operate thanks to automatic pre-selection. Just turn the dial and let the sunroof open to your desired setting.

When the sunroof is open, a wind deflector automatically extends to reduce buffeting and a blind prevents dazzling from the sun.

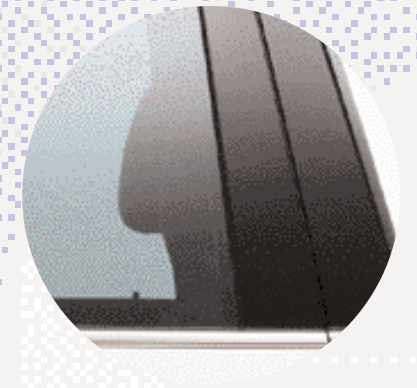
For added safety, an anti-trapping device immediately stops the roof if it meets resistance.



Cruise control provides a more relaxed drive on longer journeys.

Cruise control

Ideal for long motorway journeys, cruise control allows a speed to be programmed that will be automatically maintained. Activating the brake or clutch will deactivate the cruise control, but the last stored speed will be held in the memory, allowing you to resume cruising speed at the touch of a button.



Heat insulated tinted glass can be fitted in the rear side windows and rear windscreen.

Tinted screens

For greater privacy and protection from strong sun rays, the rear windscreen and side windows, from the B pillar backwards, can be fitted with a stronger tinted glass.

Accessories for
your Passat Estate.



Model shown is Sport fitted with Largo 17" alloy wheels (Part No. 3B0 071 492 A 666).



Duett 7J x 16.
Part No. 3B9 071 499 A 666

Sports accessories

Whether for aesthetic appeal or greater practicality, the Volkswagen accessories range could have the answer for those who desire something extra.

All items are specifically designed for Volkswagen models to ensure a harmonious fit.

As a distinctive addition, you can choose one of two designs of alloy wheels, each precision engineered to lightweight specifications.

Our anti-theft wheel bolts (Part No. ZGB 1J0 071 591) will keep them securely in place.

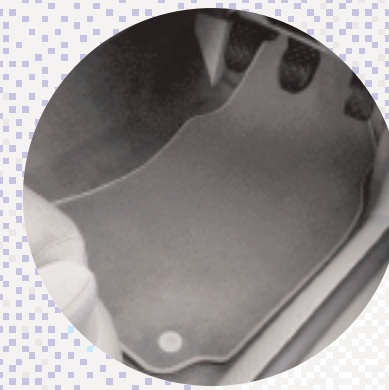
The sports range also includes a roof spoiler to further personalise your Passat Estate.



Rear tailgate spoiler.
Part No. 3B9 071 640 9AX



Headlight protectors.
Part No. ZGB 3B0 072 100 A



Carpet mat sets.
Part No. Depends on colour.



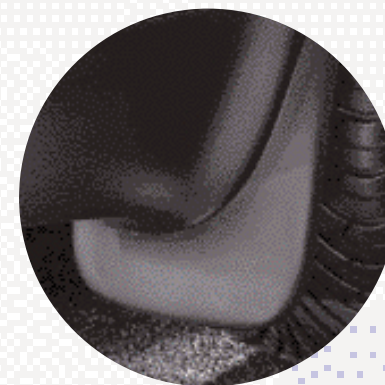
Rubber mat sets.
Front Part No. 3B2 061 501 A 041
Rear Part No. 3B0 061 511 A 041

Protection and car care

As a Volkswagen owner, we appreciate that you'll want to maintain your car in first-class condition.

So to help restrict dirt and damage, you'll find a wide selection of products that offer the highest level of protection. Consider the contoured mudflaps designed for individual models to ensure the optimum position with ease of fitment.

In addition, the carpet mats, rubber mats and loadliners are a fast and effective way to remove unwanted mud and stones from your car's interior and, in the process, prevent wear and tear to the original carpets.



Mudflaps.
Front Part No. 3B0 075 111 B
Rear Part No. 3B0 075 101 B



Heavy duty loadliner (not 4MOTION).
Part No. 863 VAG 819



Boot-mounted 6 CD autochanger.
Part No. 1J6 057 111

Audio

To complement the already high specification of the Passat Estate, the front and rear speakers can be upgraded and you can also add a boot-mounted autochanger suitable for up to 6 CDs to S and SE models.

Practical travel solutions

The roof bars are typical of Volkswagen's attention to detail and have been wind tunnel tested to ensure handling and safety remain unaffected whilst the quick release catches make fitment and removal a fast and simple process.

The roof bars fit quickly and easily onto the existing roof rails of the Passat Estate, and the range of accessories has been designed to fit securely to the roof bars.

There are several

attachments for the roof bars including bicycle carriers, luggage boxes, surfboard holder and ski/snowboard holder. Should you be carrying bikes, the hydraulic bicycle lift is a useful asset. It effortlessly positions bikes in place and helps prevent any accidental damage to the bodywork.



Rear bike rack (not in conjunction with rear tailgate spoiler).
Part No. 3B9 071 104 A



Windsurf/Surfboard holder.
4 plastic holders that adjust to the form of the surfboard.
Part No. 445 071 127

Child seats

Volkswagen is at the industry forefront when it comes to safety and security. We are amongst the first manufacturers to fit the Isofix child safety system that holds the ISOFIX DUO child safety seat, through 2 position fixing points, to the vehicle's chassis. This not only ensures greater rigidity, but reduces the time to fit a child seat because there's no need for threading seat belts.

You can also specify your Passat Estate with the option of a factory-fitted integrated child seat. The Bobsy INTEGRAL extends the use of this child safety system to younger children with a weight of 13-18 kg. For greater flexibility, it can be used in either the left or right hand position.

Please ask your retailer for information on other child seats available.



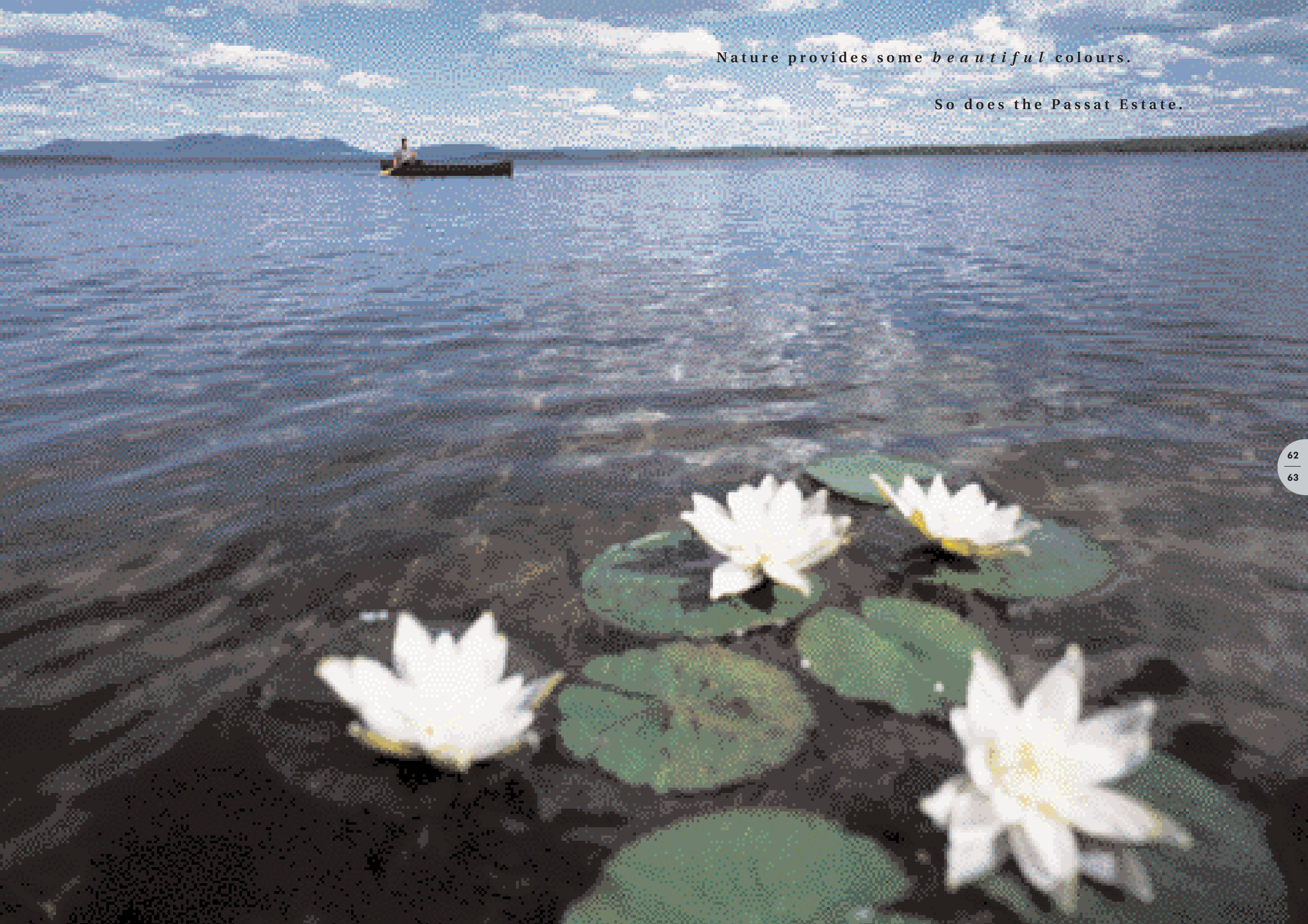
Bobsy INTEGRAL.
(Used in conjunction with the integrated child seat.) Suitable for children of approximately 2 to 4 years or a weight of 13-18 kg.
Part No. 000 019 918 B



Bobsy G1 ISOFIX DUO child seat with 2 positive fixing points to the vehicle chassis.
Suitable for children of approximately 8 months to 4 years or a weight of 9-18 kg.
Part No. 00V 019 909

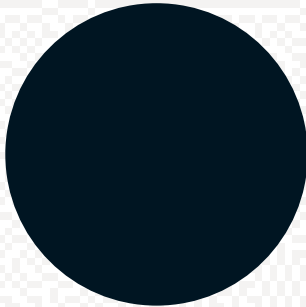
Nature provides some *beautiful* colours.

So does the Passat Estate.

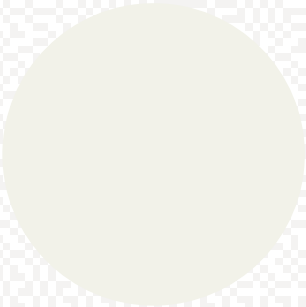


Exterior paintwork.

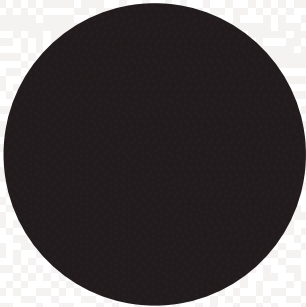
Non-Metallic paint



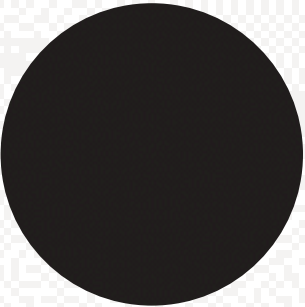
Black (A1)



Candy White (B4)

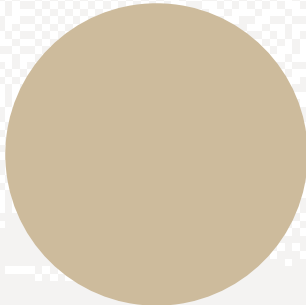


Maritime Blue (K1)

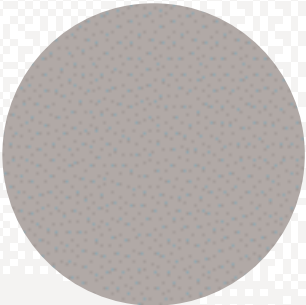


Racing Green (L7)

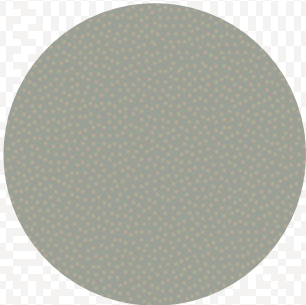
Metallic paint*



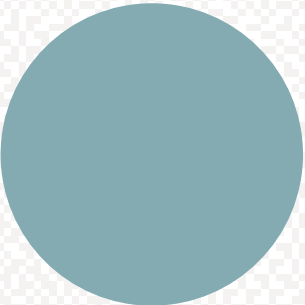
Desert Beige (1W)



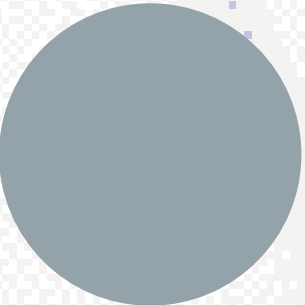
Urban Grey (2A)



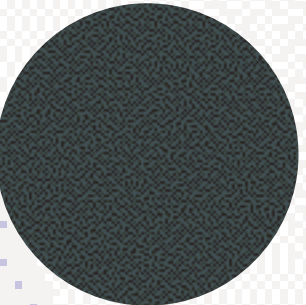
Fresco Green (3P)



Silver Blue (5A)

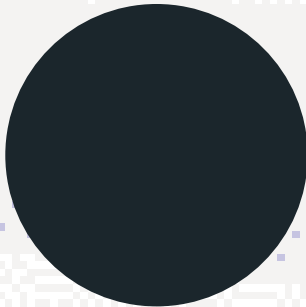


Reflex Silver (8E)

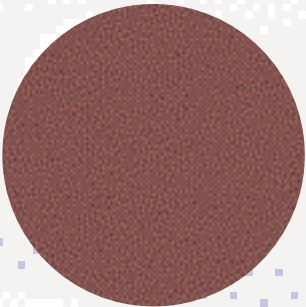


Pine Green (9Y)

Pearl Effect paint*



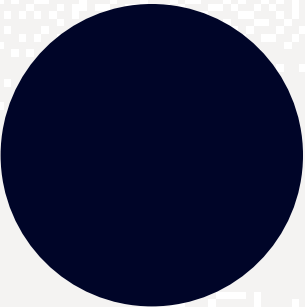
Grey Anthracite (F8)



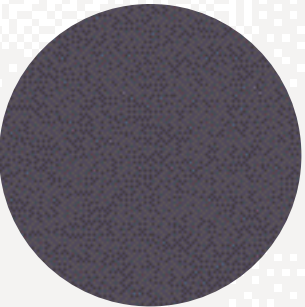
Colorado Red (Q7)



Diamond Black (Z4)



Indigo Blue (7D)

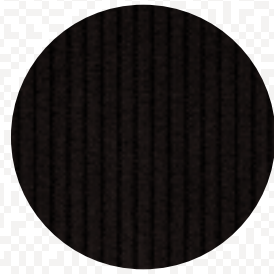


Inky Blue (8J)

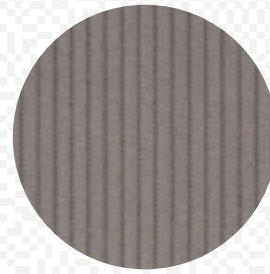
Please note: The print process does not allow for exact reproduction of the paint colours. For further details, please contact your Volkswagen retailer.
 * Metallic and Pearl Effect paint are optional at extra cost. Standard on 'V' range.

A choice of upholstery.

S
'Line' cloth

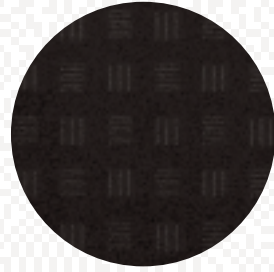


Black (FP)

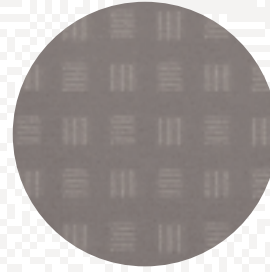


Flannel Grey (FQ)

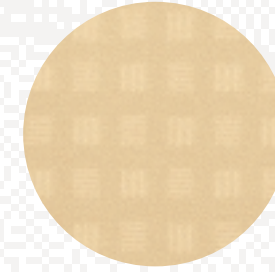
SE
'Leon' velour



Black (GA)



Flannel Grey (GB)

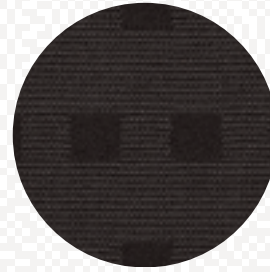


Beige (GC)

Sport
'Primero' flock sports seats

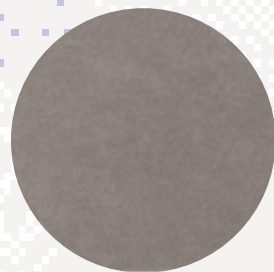


Flannel Grey (RN)



Black (RW)

V5, V6 4MOTION, V6 TDI
Alcantara/leather sports seats



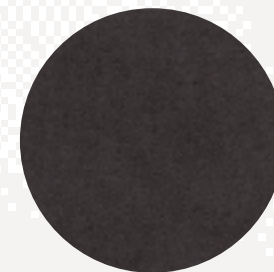
Flannel Grey/Flannel Grey (JC)



Beige/Beige (JD)



Black/Black (JJ)



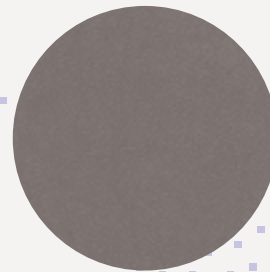
Blue/Black (JL)

Sport
Optional Alcantara/leather sports seats

SE, V5, V6 4MOTION, V6 TDI
Optional leather



Black (VA)

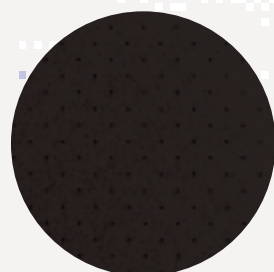


Flannel Grey (VB)

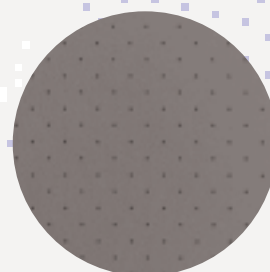


Beige (VD)

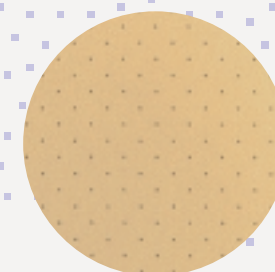
Sport, V5, V6 4MOTION, V6 TDI
Optional perforated leather sports seats



Black (ZA)



Flannel Grey (ZH)



Beige (ZJ)

Please note: The print process does not allow for exact reproduction of the upholstery colours. For further details, please contact your Volkswagen retailer.

Colour combinations.

Seat upholstery	Carpets	Dashboard	Paint														
			Black A1	Candy White B4	Maritime Blue K1	Racing Green L7	Desert Beige Metallic 1W*	Urban Grey Metallic 2A*	Fresco Green Metallic 3P*	Silver Blue Metallic 5A*	Reflex Silver Metallic 8E*	Pine Green Metallic 9Y*	Grey Anthracite Pearl Effect F8*	Colorado Red Pearl Effect Q7*	Diamond Black Pearl Effect Z4*	Indigo Blue Pearl Effect 7D*	Inky Blue Pearl Effect 8J*
S – ‘Line’ cloth																	
Black	FP	Black	Black/Black	●	●	●	●	●	●	●	●	●	●	●	●	●	●
Flannel Grey	FQ	Flannel Grey	Dark Platinum/Flannel Grey	●	●	●	●	●	●	●	●	●	●	●	●	●	●
SE – ‘Leon’ velour																	
Black	GA	Black	Black/Black	●	●	●	●	●	●	●	●	●	●	●	●	●	●
Flannel Grey	GB	Flannel Grey	Dark Platinum/Flannel Grey	●	●	●	●	●	●	●	●	●	●	●	●	●	●
Beige	GC	Beige	Dark Platinum/Beige	●	-	●	●	●	●	●	●	-	●	●	●	●	●
Sport – ‘Primero’ flock sports seats																	
Flannel Grey	RN	Flannel Grey	Dark Platinum/Flannel Grey	●	●	●	●	●	●	●	●	●	●	●	●	●	●
Black	RW	Black	Black/Black	●	●	●	●	●	●	●	●	●	●	●	●	●	●
V5, V6 4MOTION, V6 TDI – Alcantara/leather sports seats																	
Flannel Grey/Flannel Grey	JC	Flannel Grey	Dark Platinum/Flannel Grey	●	●	●	●	●	●	●	●	●	●	●	●	●	●
Beige/Beige	JD	Beige	Dark Platinum/Beige	●	-	●	●	●	●	●	●	-	●	●	●	●	●
Black/Black	JJ	Black	Black/Black	●	●	●	●	●	●	●	●	●	●	●	●	●	●
Blue/Black	JL	Black	Black/Black	●	-	●	-	-	-	-	●	●	-	-	-	●	●
SE, V5, V6 4MOTION, V6 TDI – Optional leather																	
Black	VA	Black	Black/Black	○	○	○	○	○	○	○	○	○	○	○	○	○	○
Flannel Grey	VB	Flannel Grey	Dark Platinum/Flannel Grey	○	○	○	○	○	○	○	○	○	○	○	○	○	○
Beige	VD	Beige	Dark Platinum/Beige	○	-	○	○	○	○	○	○	-	○	○	○	○	○
Sport – Optional Alcantara/leather sports seats																	
Flannel Grey/Flannel Grey	JC	Flannel Grey	Dark Platinum/Flannel Grey	○	○	○	○	○	○	○	○	○	○	○	○	○	○
Beige/Beige	JD	Beige	Dark Platinum/Beige	○	-	○	○	○	○	○	○	-	○	○	○	○	○
Black/Black	JJ	Black	Black/Black	○	○	○	○	○	○	○	○	○	○	○	○	○	○
Blue/Black	JL	Black	Black/Black	○	-	○	-	-	-	-	○	○	-	-	-	○	○
Sport, V5, V6 4MOTION, V6 TDI – Optional perforated leather sports seats																	
Black	ZA	Black	Black/Black	○	○	○	○	○	○	○	○	○	○	○	○	○	○
Flannel Grey	ZH	Flannel Grey	Dark Platinum/Flannel Grey	○	○	○	○	○	○	○	○	○	○	○	○	○	○
Beige	ZJ	Beige	Dark Platinum/Beige	○	-	○	○	○	○	○	○	-	○	○	○	○	○

● Standard ○ Optional at extra cost - Not available

Please note:

* Metallic and Pearl Effect paint are optional at extra cost. Standard on 'V' range.

Technical specification.

	S, SE, Sport 2.0 litre 130 bhp	S, SE, Sport 1.8 litre 20V Turbo 150 bhp		V5 2.3 litre 170 bhp		V6 4MOTION 2.8 litre 193 bhp		S, SE 1.9 TDI PD 100 bhp		S, SE, Sport¹ 1.9 TDI PD 130 bhp			V6 TDI 2.5 litre 150 bhp	
Engine:														
Installation	Front longitudinal mounted	Front longitudinal mounted		Front longitudinal mounted		Front longitudinal mounted		Front longitudinal mounted		Front longitudinal mounted			Front longitudinal mounted	
Type	4 cylinder in-line – petrol, cast iron cylinder block, alloy cylinder head with double overhead camshafts	4 cylinder in-line – petrol, cast iron cylinder block, alloy cylinder head with double overhead camshafts		5 cylinder 15° ‘V’ – petrol, cast iron cylinder block, alloy cylinder head with single overhead camshaft per bank		6 cylinder 90° ‘V’ – petrol, cast iron cylinder block, alloy cylinder head with double overhead camshafts per bank		4 cylinder in-line – diesel, cast iron cylinder block, alloy cylinder head with single overhead camshaft		4 cylinder in-line – diesel, cast iron cylinder block, alloy cylinder head with single overhead camshaft			6 cylinder 90° ‘V’ – diesel, cast iron cylinder block, alloy cylinder head with double overhead camshafts per bank	
Number of valves	5 per cylinder	5 per cylinder		4 per cylinder		5 per cylinder		2 per cylinder		2 per cylinder			4 per cylinder	
Cubic capacity, ltrs/cc	2.0/1984	1.8/1781		2.3/2324		2.8/2771		1.9/1896		1.9/1896			2.5/2496	
Bore/stroke, mm	82.5/92.8	81.0/86.4		81.0/90.2		82.5/86.4		79.5/95.5		79.5/95.5			78.3/86.4	
Max. output, bhp/kw at rpm	130/96 5700	150/110 5700		170/125 6200		193/142 6000		100/74 4000		130/96 4000			150/110 4000	
Max. torque, lbs.ft/Nm at rpm	144/195 3300	155/210 1750		162/220 3200		207/280 3200		184/250 1900		210/285 1750 228/310 1900 228/310 1900			228/310 1500	
Compression ratio	10.3 : 1	9.5 : 1		10.8 : 1		10.6 : 1		19.0 : 1		19.0 : 1			19.5 : 1	
Induction	Electronic multipoint injection system (cylinder single injection)	Electronic multipoint injection system (cylinder single injection)		Electronic multipoint injection system (cylinder single injection)		Electronic multipoint injection system (cylinder single injection)		Direct injection – turbocharged with intercooler		Direct injection – turbocharged with intercooler			Direct injection – distributor pump, turbocharged with intercooler	
Exhaust emission control	Catalytic converter, lambda control	Catalytic converter, lambda control		Catalytic converter, lambda control		Catalytic converter, lambda control		Unregulated catalyst		Unregulated catalyst			Unregulated catalyst	
Fuel grade, minimum	Premium 95 RON unleaded	Premium 95 RON unleaded		Premium 95 RON unleaded		Premium 95 RON unleaded		Diesel		Diesel			Diesel	
Battery, A (Ah)	280 (60)	220 (44)	280 (60)	280 (60)	340 (70)	340 (70)	340 (70)	380 (80)	380 (80)	380 (80)	380 (80)	380 (80)	420 (82)	420 (82)
Alternator, amps	90	90	90	90	120	90	90	120	70	120	120	70	90	90
Transmission:	Front wheel drive	Front wheel drive		Front wheel drive		Four wheel drive		Front wheel drive		Front wheel drive			Front wheel drive	
Gearbox	5 spd man	5 spd man	5 spd auto tiptronic	5 spd man	5 spd auto tiptronic	5 spd man	5 spd auto tiptronic	5 spd man	4 spd auto	5 spd man	6 spd man ¹	5 spd auto tiptronic	6 spd man	5 spd auto tiptronic
Performance:														
Top speed, mph (km/h) (where law permits)	126 (204)	133 (214)	129 (208)	137 (221)	135 (217)	144 (232)	141 (227)	114 (184)	111 (178)	125 (201)	125 (201)	122 (196)	133 (214)	129 (208)
Acceleration, secs 0 - 62 mph	10.3	9.4	10.8	9.4	11.1	8.0	10.1	12.8	14.8	10.2	10.2	11.9	9.8	10.9
ABI insurance group	TBA	14	14	16	16	17	17	12	12	12	12	12	15	15
Environmental information:														
Official fuel consumption according to EU Directive 99/94, mpg/ltr per 100 km														
Urban	24.1/11.7	23.9/11.8	20.6/13.7	21.6/13.1	18.5/15.3	18.2/15.5	16.9/16.7	38.7/7.3	29.1/9.7	36.2/7.8	36.7/7.7	27.7/10.2	27.7/10.2	23.9/11.8
Extra-urban	44.8/6.3	41.5/6.8	38.2/7.4	38.7/7.3	38.7/7.3	34.4/8.2	34.4/8.2	58.9/4.8	51.4/5.5	58.9/4.8	56.5/5.0	48.7/5.8	51.4/5.5	43.5/6.5
Combined	34.0/8.3	32.8/8.6	28.8/9.8	30.1/9.4	27.4/10.3	25.9/10.9	25.0/11.3	49.6/5.7	40.4/7.0	47.9/5.9	47.1/6.0	38.7/7.3	39.2/7.2	33.6/8.4
Fuel tank capacity, galls/ltrs	13.6/62	13.6/62	13.6/62	13.6/62	13.6/62	13.6/62	13.6/62	13.6/62	13.6/62	13.6/62	13.6/62	13.6/62	13.6/62	13.6/62
Official CO ₂ emission, g/km*	199	206	235	226	247	262	271	154	189	159	162	197	194	227
Noise, dB	74	72	71	71	71	72	73	72	72	72	74	70	72	74

¹ 6 speed manual gearbox only available on the Sport model.

* Please see page 79 for further information on CO₂ emissions.

Specifications subject to change without notice. Information correct as at 18 July 2002. Please note: All data subject to manufacturer's tolerances.

Technical specification.

	S, SE, Sport 2.0 litre 130 bhp	S, SE, Sport 1.8 litre 20V Turbo 150 bhp	V5 2.3 litre 170 bhp	V6 4MOTION 2.8 litre 193 bhp	S, SE 1.9 TDI PD 100 bhp	S, SE, Sport¹ 1.9 TDI PD 130 bhp	V6 TDI 2.5 litre 150 bhp							
Running gear:														
Front axle	Four link with combined spring and shock absorber units. Anti-roll bar. Track stabilising steering geometry	Four link with combined spring and shock absorber units. Anti-roll bar. Track stabilising steering geometry	Four link with combined spring and shock absorber units. Anti-roll bar. Track stabilising steering geometry	Four link with combined spring and shock absorber units. Anti-roll bar. Track stabilising steering geometry	Four link with combined spring and shock absorber units. Anti-roll bar. Track stabilising steering geometry	Four link with combined spring and shock absorber units. Anti-roll bar. Track stabilising steering geometry	Four link with combined spring and shock absorber units. Anti-roll bar. Track stabilising steering geometry							
Rear axle, 2 wheel drive	Torsion beam trailing arm with track-correcting bearings	Torsion beam trailing arm with track-correcting bearings	Torsion beam trailing arm with track-correcting bearings	-	Torsion beam trailing arm with track-correcting bearings	Torsion beam trailing arm with track-correcting bearings	Torsion beam trailing arm with track-correcting bearings							
Rear axle, 4 wheel drive	-	-	-	Double wishbone with anti-roll bar	-	-	-							
Steering	Power-assisted maintenance-free rack and pinion. Safety steering column			Power-assisted maintenance-free rack and pinion. Safety steering column		Power-assisted maintenance-free rack and pinion. Safety steering column								
Brakes system	ABS (Anti-lock Braking System). Diagonally split circuits. Servo assisted. EBD (Electronic Brake-pressure Distribution)			ABS (Anti-lock Braking System). Diagonally split circuits. Servo assisted. EBD (Electronic Brake-pressure Distribution)		ABS (Anti-lock Braking System). Diagonally split circuits. Servo assisted. EBD (Electronic Brake-pressure Distribution)								
Front	Ventilated discs	Ventilated discs	Ventilated discs	Ventilated discs	Ventilated discs	Ventilated discs	Ventilated discs							
Rear	Discs	Discs	Discs	Ventilated discs	Discs	Discs	Discs							
Turning circle, ft/m	37/11.4	37/11.4	37/11.4	37/11.4	37/11.4	37/11.4	37/11.4							
Wheels and tyres:														
Wheel size	6J x 15 ^{2,3}	6J x 15 ^{2,3}	7J x 16	7J x 16	6J x 15 ²	6J x 15 ^{2,3}	7J x 16							
Wheel type	Steel ^{2,3}	Steel ^{2,3}	Alloy 'Road America'	Alloy 'Road America'	Steel ²	Steel ^{2,3}	Alloy 'Road America'							
Tyre size	195/65 R15 ^{2,3}	195/65 R15 ^{2,3}	205/55 R16	205/55 R16	195/65 R15 ²	195/65 R15 ^{2,3}	205/55 R16							
Spare wheel	Full size steel	Full size steel	Full size steel	Full size steel	Full size steel	Full size steel	Full size steel							
Weights, lbs/kgs:														
	5 spd man	5 spd man	5 spd auto tiptronic	5 spd man	5 spd auto tiptronic	5 spd man	4 spd auto	5 spd man	6 spd man ¹	5 spd auto tiptronic	6 spd man	5 spd auto tiptronic		
Unladen weight [†]	3497/1586	3519/1596	3654/1657	3651/1656	3766/1708	3865/1753	4011/1819	3583/1625	3612/1638	3568/1618	3618/1641	3696/1676	3782/1715	3863/1752
Gross vehicle weight	4388/1990	4410/2000	4542/2060	4542/2060	4653/2110	4785/2170	4917/2230	4476/2030	4498/2040	4476/2030	4520/2050	4608/2090	4719/2140	4807/2180
Payload [†]	891/404	891/404	889/403	891/404	886/402	919/417	906/411	893/405	886/402	908/412	902/409	891/404	937/425	944/428
Axle load limit: Front	2227/1010	2249/1020	2381/1080	2381/1080	2492/1130	2403/1090	2536/1150	2337/1060	2359/1070	2315/1050	2359/1070	2448/1110	2514/1140	2602/1180
Rear	2315/1050	2315/1050	2315/1050	2315/1050	2315/1050	2536/1150	2536/1150	2293/1040	2293/1040	2293/1040	2315/1050	2315/1050	2315/1050	2315/1050
Trailer load limits, lbs/kgs:														
Braked 12% incline	3087/1400	2867/1300	3308/1500	3308/1500	3308/1500	3969/1800	3087/1400	3087/1400	3528/1600	3528/1600	3528/1600	3528/1600	3528/1600	3528/1600
Unbraked	1654/750	1433/650	1544/700	1544/700	TBA	1654/750	1433/650	1433/650	1433/650	1433/650	1433/650	1433/650	1654/750	1654/750
Towbar load limit	165/75	165/75	165/75	165/75	TBA	187/85	165/75	165/75	165/75	165/75	165/75	165/75	165/75	165/75
Max. roof load	221/100	221/100	221/100	221/100	TBA	221/100	221/100	221/100	221/100	221/100	221/100	221/100	221/100	221/100
Max. luggage capacity, cu.ft (litres):														
	VDA measuring method using 200 x 100 x 50 mm blocks			VDA measuring method using 200 x 100 x 50 mm blocks				VDA measuring method using 200 x 100 x 50 mm blocks						
With rear seat upright	17.5 (495)	17.5 (495)	17.5 (495)	17.5 (495)	17.5 (495)	15.9 (450)	17.5 (495)	17.5 (495)	17.5 (495)	17.5 (495)	17.5 (495)	17.5 (495)	17.5 (495)	17.5 (495)
With rear seat folded	56.5 (1600)	56.5 (1600)	56.5 (1600)	56.5 (1600)	56.5 (1600)	54.6 (1545)	56.5 (1600)	56.5 (1600)	56.5 (1600)	56.5 (1600)	56.5 (1600)	56.5 (1600)	56.5 (1600)	56.5 (1600)

¹ 6 speed manual gearbox only available on the Sport model.

² SE models have 7J x 15 'Wellington' alloy wheels with 205/60 R15 tyres and anti-theft wheel bolts.

³ Sport models have 7J x 16 'Road America' alloy wheels with 205/55 R16 tyres and anti-theft wheel bolts.

[†] Figures are calculated in accordance with manufacturer's criteria.

Specifications subject to change without notice. Information correct as at 18 July 2002. Please note: All data subject to manufacturer's tolerances.

Standard equipment.

Safety and Security:

	S	SE	Sport	'V' range
ABS: Anti-lock brakes – includes BAS (Brake Assist System)	●	●	●	●
Airbags: Driver and front passenger airbags	●	●	●	●
Front seat side impact airbags	●	●	●	●
Curtain airbag system	●	●	●	●
Alarm: With interior protection and remote central locking	●	●	●	●
Body: Fully galvanised with 12-year anti-corrosion warranty	●	●	●	●
Door side impact protection	●	●	●	●
Rigid safety cell with front and rear crumple zones	●	●	●	●
Electronic engine immobiliser, coded transponder	●	●	●	●
ESP: Electronic Stabilisation Programme – includes EDL (Electronic Differential Lock) and ASR (Traction Control)	●	●	●	●
Head restraints: Front adjustable	●	●	●	●
Three rear adjustable and removable	●	●	●	●
High level third brake light	●	●	●	●
Isofix child seat preparation for rear seat, outer positions ¹	●	●	●	●
Seat belts: Front three-point height-adjustable seat belts with tensioners	●	●	●	●
Three rear three-point seat belts	●	●	●	●
Warning triangle	●	●	●	●

Functional Equipment:

	S	SE	Sport	'V' range
Boot opener: Electrically operated via switch on driver's door	●	●	●	●
Computer: Multifunction, single and total journey memories. Information given on: Driving time, average fuel consumption, distance driven, range, average speed and external temperature	●	●	●	●
Door mirrors: Electrically heated and adjustable, painted in body colour	●	●	●	●
Front fog lights	○	○	○	○
Headlights: Electric height adjustment and warning buzzer for lights if left on	●	●	●	●
Combined headlight and fog light switch	●	●	●	●
Heated rear window	●	●	●	●
In-car entertainment: 'Gamma' radio/cassette	●	●	●	●
4 digit security code with flashing LED	●	●	●	●
4 x 20 watt output with FM/MW manual/seek tuning, RDS/EON	●	●	●	●
Logic tape deck with 'Dolby' and MSS Music Search System	●	●	●	●
GALA adjustable vehicle speed-responsive volume control	●	●	●	●
8 speakers, 4 front, 4 rear and detachable roof aerial	●	●	●	●
CD autochanger: 6 disc, dash-mounted	○	○	●	●
CD player: Single	○	●	–	–
Lowered sports suspension	○	○	●	○
Power-assisted steering	●	●	●	●
Steering wheel: Height and reach adjustable	●	●	●	●
Warning lights for open boot lid and doors	●	●	●	●
Weather pack: Automatic dimming rear-view mirror and rain sensor	○	○	●	●
Windows: Electric front and rear	●	●	●	●
Wipers: 2 speed with wash/wipe and intermittent wipe with 4 position delay	●	●	●	●
Rear window wash and intermittent wipe	●	●	●	●

● Standard ○ Optional – Not available

¹ Additional bracket required, available from your Volkswagen retailer.

² Aluminium inserts are not available with beige interior.

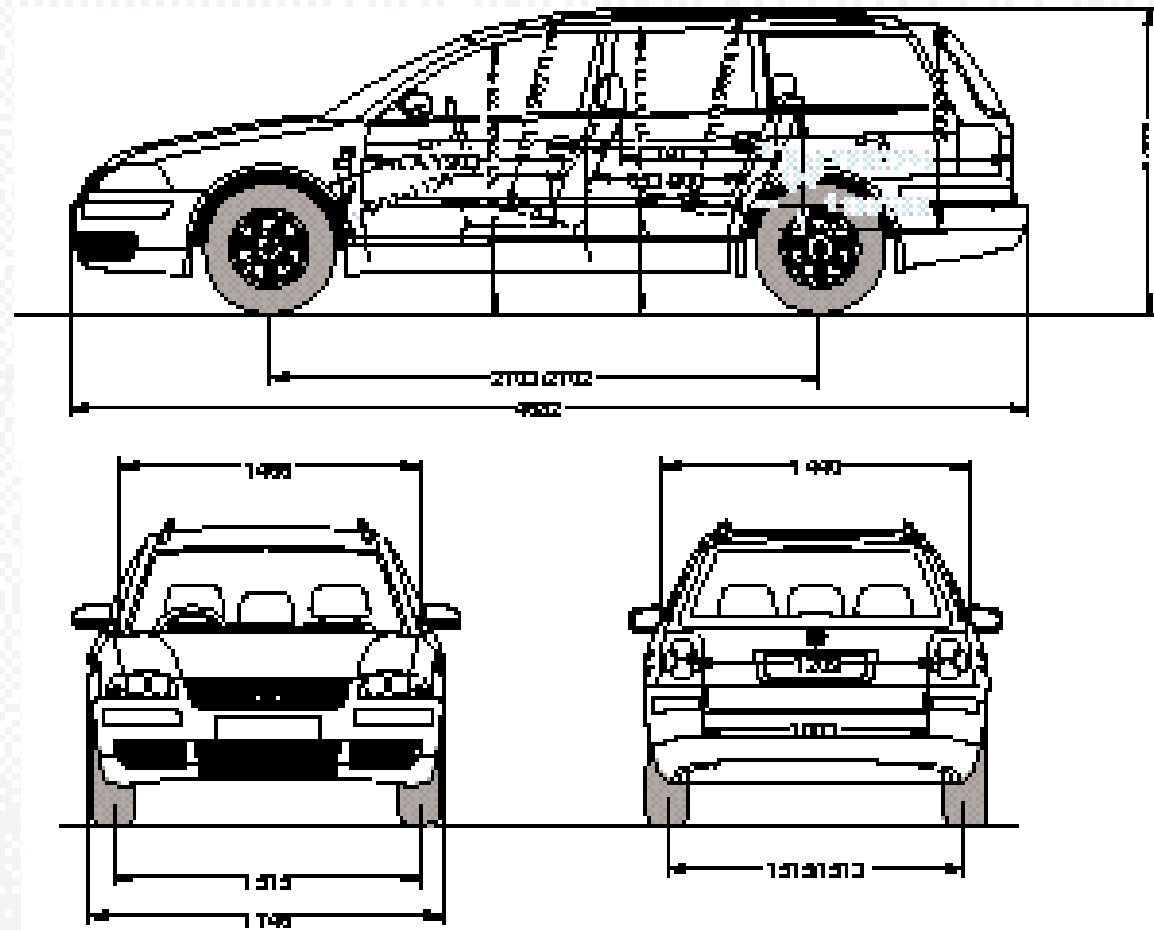
Interior Equipment and Styling:

	S	SE	Sport	'V' range
Aluminium inserts in centre console, ashtray lid and interior door handles	–	–	●	–
Aluminium ² or wood inserts in centre console, ashtray lid and interior door handles	–	–	–	●
Carpet mats, front and rear	○	○	○	●
Chrome-plated instrument surrounds	●	●	●	●
Cup holder: Front x 2	●	●	●	●
Driver, centre and passenger sun visors	●	●	●	●
Entry/warning lights in front doors	●	●	●	●
Fuel filler flap: Electrically operated via switch on driver's door	●	●	●	●
Heating: Air conditioning, electronic climate control	●	●	●	●
Instruments: Speedo and rev counter, electronic odometer and trip, service interval display, digital clock, fuel and temperature gauge, low fuel warning light, blue adjustable panel illumination	●	●	●	●
Interior lighting: With time delay, front and rear passenger reading lights	●	●	●	●
Load sill protection – stainless steel	●	●	●	●
Luggage compartment light and load restraining hooks	●	●	●	●
Luggage cover, removable	●	●	●	●
Puddle lights in front doors	●	●	●	●
Seating: Front, with height adjustment	●	●	●	●
Front, with lumbar adjustment	○	●	●	●
Front, sports seats	–	–	●	●
Front, centre adjustable armrest with storage compartment	–	●	●	●
Rear, backrest and base split 1/3 to 2/3 with individual fold facility	●	●	●	●
Rear seat centre armrest	●	●	●	●
Steering wheel: Four-spoke	●	●	–	–
Three-spoke, leather rimmed	–	–	●	●
Storage: Glovebox with air conditioning and illumination, lockable	●	●	●	●
Front seat backrest storage pockets	–	●	●	●
Front door pockets	●	●	●	●
Upholstery: 'Line' cloth	●	–	–	–
'Leon' velour	–	●	–	–
'Primero' flock	–	–	●	–
Alcantara/leather	–	–	○	●
Vanity mirrors, illuminated on driver's and passenger's side	●	●	●	●
12V socket in luggage compartment	●	●	●	●

Exterior Equipment and Styling:

	S	SE	Sport	'V' range
Body-coloured bumper strips and side bump strips with chrome inserts	–	–	–	●
Chrome trimmed radiator grille	●	●	●	●
Chrome trimmed side windows	–	●	●	●
Heat insulating tinted glass	●	●	●	●
Metallic or Pearl Effect paint	○	○	○	●
Roof rails, black	●	●	●	–
Roof rails, chrome	–	–	–	●
Wheels: 6J x 15 steel with full size wheel trims and 195/65 R15 tyres	●	–	–	–
7J x 15 'Wellington' alloy wheels with 205/60 R15 tyres and anti-theft wheel bolts	○	●	–	–
7J x 16 'Road America' alloy wheels with 205/55 R16 tyres and anti-theft wheel bolts	○	○	●	●
Full size steel spare wheel	●	●	●	●
Winter pack: Heated front seats and heated windscreen washer jets	○	○	○	●

Exterior dimensions.



Specifications subject to change without notice. Information correct as at 18 July 2002. Please note: All data subject to manufacturer's tolerances.

Glossary.

ABS (Anti-lock Braking System)

The ABS system prevents the wheels from locking during heavy or emergency braking, enabling the vehicle to remain steerable. When braking, wheel speed sensors measure the road wheel speed and, should one or more wheels start to lock, the system reduces brake pressure to that wheel.

ASR (Anti-Slip Regulation)

ASR is a switchable traction control system that prevents the driven wheels from spinning under acceleration by reducing engine torque. It is active at all speeds.

BAS (Brake Assist System)

In some emergency braking situations, a driver might not press the brake pedal as hard as it is possible to do so. Therefore BAS was developed to support the driver by applying additional pressure to the brakes in critical braking situations.

EBD (Electronic Brake-pressure Distribution)

Electronic, more sophisticated means of regulating the ratio of front/rear brake pressure. Works in conjunction with ABS.

EDL (Electronic Differential Lock)

EDL improves driving and steering characteristics when accelerating on road surfaces where each wheel has a different degree of traction. The system operates automatically and is combined with the ABS system. Using the ABS wheel sensors, EDL monitors the speed of the individual driving wheels.

When a difference in driving wheel speed is detected (i.e. when one wheel starts to spin due to differences in road surfaces, e.g. due to water or ice), the system brakes the spinning wheel, transferring engine power to the wheel with the best traction. EDL is active in forward and reverse.

Electronic Engine Immobiliser

Each car has a unique 'code transponder' fitted within the ignition key. When an attempt is made to start the engine, the engine management system interrogates the transponder and if the incorrect code is received (i.e. the wrong key is used), the engine will not run.

EON (Enhanced information concerning Other Networks)

Ensures that all traffic announcements within a traffic programme area are put through.

ESP (Electronic Stabilisation Programme)

ESP is designed to stabilise the dynamic handling response of the vehicle by counteracting any tendency towards oversteer or understeer. The ESP constantly compares the actual movement of the vehicle with predetermined values and, according to the situation, ESP reacts by braking the outer front or inner rear wheel (according to direction of slip) and automatically adjusting the engine's output.

PD - 'Pumpe Düse' (Pump Injectors)

Very high pressure (max. = 2,020 bar) injection system for new generation diesel engines. Significantly improves performance and economy due to better fuel atomisation.

RDS (Radio Data System)

The radio receiver uses additional data sent by the station to display the name of the station you are listening to and, given poor reception, it will retune the selected station to an alternative frequency if available. The system can also provide local traffic reports, interrupting the current station, CD or cassette if required.

4MOTION

Permanent four wheel drive, torsen (torque sensing) centre differential which allows infinitely variable distribution of the drive, providing optimum traction for most driving situations.

Volkswagen service

for your *peace* of mind.

The Volkswagen Warranty.

3-year Warranty.

All Volkswagen Passat Estates now come with a 3-year/60,000 miles warranty, which protects your car against the failure of most mechanical and electrical components due to manufacturing defects. This comprises a 2-year manufacturer's warranty with unlimited mileage plus a further 1-year/60,000 miles (whichever is soonest) Retailer Warranty. Should the mileage exceed 60,000 miles within the first two years, the manufacturer's 2-year warranty will still be valid. If an additional warranty for subsequent years or higher mileage is desired, it may be purchased from any authorised Volkswagen retailer; however, this additional warranty must be purchased before the mileage reaches 59,999. Cover is subject to the car being serviced and maintained at an authorised Volkswagen retailer according to the manufacturer's recommendations. Full details of the 3-year warranty are available from your Volkswagen retailer. This 3-year warranty is only available on vehicles purchased in the UK through an authorised Volkswagen retailer.

3-year Paint Warranty.

The paintwork of the Passat Estate is covered against manufacturing defects for a period of 3 years. Naturally, the Passat Estate must be cared for in compliance with the operating instructions which will be found in your vehicle handbook. Please consult your Volkswagen retailer for full warranty details.

12-year Body Protection Warranty.

The internal body sections and panels of the Passat Estates are covered against rusting through from the inside for a period of 12 years. Naturally, the Passat Estate must be cared for in compliance with the operating instructions. Please consult your Volkswagen retailer for full warranty details.

Service Intervals for Petrol and Diesel Engines.

Volkswagen has always been dedicated to protecting the environment. That's why many Volkswagen Passat Estates now come with a choice of service schedules – Extended and Variable Service regimes.

Your vehicle will be set to operate on Extended Service, which means an oil service is required at 10,000 miles or 12 months (whichever is sooner) with a main service required at 20,000 miles or 24 months (whichever is sooner).

Some engines can also be set to run on the Variable Service regime. Please contact your Volkswagen retailer for further information.

Approved Accessories.

A comprehensive range of accessories from alloy wheels to carpet mats is available to complement the factory-fitted option list. Volkswagen Approved accessories purchased from and fitted by your Volkswagen retailer at the point of vehicle sale will also benefit from the 3-year vehicle warranty.

Volkswagen Insurance.

Competitive insurance premiums are available to Volkswagen owners through Volkswagen Insurance Service (Great Britain) Limited. Volkswagen Insurance guarantee that all repair work is undertaken by an authorised Volkswagen retailer using only genuine parts, thus ensuring that the manufacturer's warranties remain in force. For a quotation, telephone Linkline on 0845 600 8006.

Extended Warranty.

You may purchase additional protection from your retailer or contact 0870 9000 115.

Volkswagen Finance.

Volkswagen Finance offers a dedicated service to meet the needs of both the business user and the private motorist. We can help you choose the right type of finance and will tailor the package to meet your specific requirements. Please consult your Volkswagen retailer for details.

Volkswagen Assistance.

Every new car is registered for Volkswagen Assistance for 1 year. This provides vehicle recovery in the unlikely event of a breakdown (subject to conditions). Volkswagen Assistance can also be purchased for subsequent years. For full details, please contact your Volkswagen retailer.

Tax Free Sales.

For full details, please contact your Volkswagen retailer.

CO₂ Emission.

The weight of a vehicle will influence the level of CO₂ emission it produces; as a result, vehicles with higher levels of specification and factory-fitted options may emit higher levels of CO₂.

The CO₂ figure quoted for each vehicle is the maximum possible. The unladen weight of the vehicle is calculated by range at the time of manufacture and the maximum possible CO₂ emission for that weight range is applied according to the Council Directive 80/1268EEC as amended by Commission Directive 1999/100/EC on the approximation of the laws of the member states relating to the carbon dioxide emissions and the fuel consumption of motor vehicles.

Please Note:

Some illustrations in this brochure do not necessarily reflect UK specifications. Consequently, controls and some items of equipment are positioned differently for the UK.

The specifications contained in this brochure are for information purposes only and are subject to change. If you require any specific feature, you must consult your Volkswagen retailer who is regularly updated with any change in specification. Please check model availability and full specification details with your Volkswagen retailer prior to ordering.

All vehicles fitted with accessories in this brochure have been registered.

The TDI® is a registered trademark of VOLKSWAGEN AG.

Note:

We would like to advise you that telephone calls to Volkswagen Customer Care may be monitored and recorded as part of our training and quality assurance processes. All our monitoring and recording processes meet Ofcom regulations.

The Passat Estate.

Discover the difference.



Model shown is the Passat Estate SE.