



The Golf

2003 Model Year

Volkswagen Information Service. Telephone 0800 333 666

Internet: www.volkswagen.co.uk

© Volkswagen Group United Kingdom Limited 2003.

Issue: 1 February 2003. Printed in UK.

PVW006GO

W e l c o m e to
the **Golf.**



Model shown is GTI.

The Golf.

For over two decades the Golf has epitomised Volkswagen's philosophy – to build cars that are the perfect synthesis of reliability, style, safety and performance.

The result is a car that offers a value-for-money specification matched by few vehicles in its class. It's, therefore, no surprise to learn that the Golf is Europe's number one best-selling car.

And the latest Golf is even better. Yet, reassuringly, such extensive improvements have been achieved whilst retaining the Golf's classic external silhouette.

4 Philosophy

6 Safety

8 Engines

12 The Golf E and Match

14 The Golf SE

16 The Golf GTI and GT TDI PD

18 The Golf GTI 150 PS and 180 PS

20 The Golf V5

22 The Golf V6 4MOTION

24 Optional Equipment

30 Colours and Upholstery

34 Technical Specification

42 Standard Equipment

44 Volkswagen Service



Model shown is V6 4MOTION.



With power steering and improved chassis, the Golf delivers superb roadholding. Model shown is E fitted with an optional third rear head restraint.



The Electronic Stabilisation Programme – ESP – helps to prevent losing control in unstable driving conditions.

Volkswagen's Electronic Stabilisation Programme is an active safety feature which can help to prevent an accident by registering and helping to correct oversteer, understeer and loss of stability in the vehicle.

The car's driving condition and the driver's actions are constantly monitored thanks to a variety of sensors placed throughout the car. The sensors monitor factors such as steering angle, wheel angle, yaw rate

(spinning) and lateral acceleration (side to side movement). According to the situation, ESP reacts by braking the appropriate wheels and automatically adjusting the engine's output. Included in the ESP package are Electronic Differential Lock (EDL) and Anti-Slip Regulation (ASR).

However, this additional safety feature is no excuse to drive recklessly because, despite its proven quality, ESP cannot dispense with the laws of physics.



The door-fitted 'puddle' lights illuminate the path when exiting your Golf at night-time and are standard on SE models and above.



ABS is standard on all models to provide the highest level of active safety.



Front seat side airbags are standard across the range. They provide added protection in the event of a side impact.

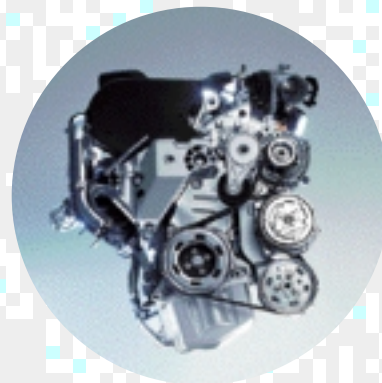
Regardless of your driving experience, you can never account for other road users or unforeseeable driving situations. So with the Golf it's comforting to know you have the benefit of advanced technology such as Electronic Brake-pressure Distribution (EBD) and Anti-lock Braking System (ABS). EBD constantly monitors the rate at which each wheel is slowing and redistributes the braking effort accordingly between the front and rear axles. The result of this process is much greater stability, even under severe braking.

The ABS is activated under extreme braking, particularly on slippery road surfaces. This electronically controlled system

helps to prevent the wheels from 'locking', thereby enabling the car to remain steerable in hazardous conditions. Widely regarded as one of the major safety innovations of recent years, ABS is standard on all Golfs.

At Volkswagen, our commitment to driver and passenger safety goes much further. We want you to avoid potentially dangerous situations in the first place, so we've developed a host of active safety features. For example, you can have the option of rain sensitive windscreen wipers which operate automatically. Or how about an automatic dimming rear-view mirror that detects the amount of dazzle from the car behind?

There are also plenty of standard safety features right across the Golf range. The newly developed twin halogen headlights are not merely a stylish addition, but greatly improve road illumination. Plus, a high level brake light that provides a clearer message to following traffic. In addition, there are front seat belt tensioners and full size driver and front passenger and front seat side airbags as standard across the range.



The 1.8 litre Turbo develops 150 PS* and has an equally impressive torque curve. It delivers its maximum torque of 210 Nm from as low as 1,750 rpm right up to 4,600 rpm.

The heart of every car is the engine. It's such an individual preference that Volkswagen believes you should have a wide selection of engines from which to choose.

Will it be one of the seven petrol engines? Such as the economical 1.4 litre 16V 75 PS or the 1.6 litre 105 PS* manual, also available as a 102 PS* automatic version?*

Perhaps the 2.0 litre 115 PS or the V5 2.3 litre 170 PS* are more to your liking? If it's performance you're seeking, consider two 1.8 litre Turbo units, developing 150 PS* and 180 PS* or the powerful 2.8 litre V6 4MOTION producing 204 PS* and capable of 146 mph (where the law permits).*

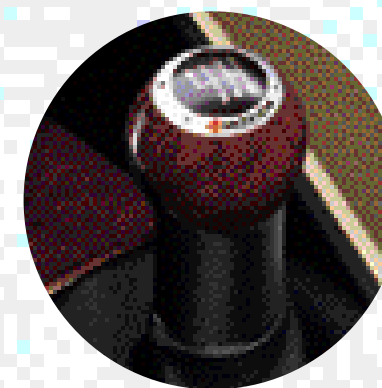
The 2.3 litre 20 valve V5 engine develops an impressive 170 PS*.

Or would a diesel be more appropriate? The range starts with a 1.9 litre SDI 68 PS available for the Golf E. Three further diesels, all 1.9 litre capacity, have the advantage of Volkswagen's innovative 'Pumpe Düse' technology.*

This high pressure fuel injection system is extremely efficient and not only boosts torque, it returns exceptional fuel economy. The TDI PD 100 PS* for the Match and SE is available with a five speed manual transmission, and achieves 64.2 mpg on the Extra-urban cycle*. SE models benefit from the option of a five speed automatic tiptronic transmission. The next engine in the TDI PD range is the 130 PS* for the GT TDI PD; this unit provides increased performance, achieving a maximum torque of 310 Nm at 1,900 rpm.*

The top-of-the-range 150 PS engine is one of the most powerful diesels ever launched by Volkswagen and delivers truly outstanding performance. The GTI 1.9 PD is capable of 0 - 62 mph in just 8.6 seconds and a top speed of 134 mph, where the law permits, yet is still capable of returning 52.3 mpg on the Combined fuel cycle*.*

** Please see pages 34, 35, 38 and 39 for PS explanation and fuel consumption figures.*



The V6 4MOTION features an 'intelligent' four wheel drive system.

Deciding on the Golf is the *easy* part.

Which model is the harder decision.



Model shown is Match.



Interior shown is Golf Match with 'Airport' cloth upholstery and optional Reflex Silver Metallic paint.

The Golf E and Golf Match.

Volkswagen is synonymous with value for money and the Golf is no exception. Even the entry model E is packed with features you'd normally associate with a higher class of car.

As you'd expect from Volkswagen, safety is a priority. Standard equipment includes ESP, driver and front passenger and front seat side airbags, front seat belt tensioners, central locking, two rear head restraints and a raised third brake light.

Externally, you'll no doubt admire its removable roof aerial, stylish twin halogen headlights and integrated front indicators.

And the well-equipped interior will leave you equally impressed. For example, the height-adjustable driver's seat, height and reach adjustable steering wheel and power steering all combine to make driving the Golf an extremely comfortable experience. For your convenience

there is a third sun visor situated above the rear-view mirror and a 'Beta' radio/cassette.

With the Match you benefit from 15 inch 'Avus II' alloy wheels, electric windows, electrically heated and adjustable door mirrors, manual air conditioning, a front-loading single CD player, multifunction computer and remote central locking.

To power the Golf E you can select an economical* 1.4 litre 75 PS petrol engine or a 1.9 litre SDI 68 PS diesel unit. The Match offers you the choice of a second petrol engine, the 1.6 litre 105 PS manual or 102 PS automatic, and the 1.9 litre TDI PD 100 PS engine instead of the 1.9 litre SDI 68 PS diesel unit.

* Please see pages 34, 35, 38 and 39 for PS explanation and fuel consumption figures.



Manual air conditioning provides year round comfort. Standard on Match and SE and optional on E models.



For comfort and safety, two rear head restraints are standard.



The interior shown is Golf SE automatic.

The Golf SE.

The SE model is equipped with an even more luxurious specification, further adding to the Golf's reputation as a mid range hatchback with an 'executive' feel. Take, for example, a remote control alarm system, manual air conditioning, electric front and rear windows, a single CD player, a 'Gamma' radio/cassette with RDS and eight speakers, rear seat centre armrest with built-in compartment box, front cup holders, a multifunction computer, and a multifunction steering wheel including cruise control, all fitted as standard equipment.



For added security, the central locking also incorporates anti-hijack locks. This feature allows all doors to be locked by one button conveniently located on the driver's door.

The SE is available with a 1.6 litre, 105 PS petrol engine operated by a smooth five speed gearbox. It can reach a top speed of 119 mph, where the law permits,

and accelerates from 0 - 62 mph in just 10.8 seconds. For more effortless driving appeal, this engine can be linked to a four speed automatic transmission with a slightly reduced output of 102 PS.

Alternatively, there's the option of a 'turbocharged' 1.9 litre TDI PD diesel engine producing 100 PS, available with either a manual or five speed automatic tiptronic gearbox.



A front-loading single CD player is standard on SE models.



For greater all round vision, the electrically-adjustable door mirrors are also heated and fitted with blue tinted glass. Standard on Match models and above.



The Golf GTI.

Standard: 'Gamma' radio/cassette, front-loading single CD player and electric windows (front only operation on three door models; front and rear on five door models).



Electronic climate control is a luxurious feature allowing a desired temperature to be consistently maintained.



The powerful twin halogen headlights include integrated fog lights.



A front-loading single CD player is standard on GTI models.

The Golf GTI and GT TDI PD.

When first launched, the legendary Golf GTI established a new breed of car. Two decades of technical innovations have seen the Golf GTI go from strength to strength. The arrival of this Golf GTI is testimony to Volkswagen's engineering achievements and reconfirms its class-leading status.

The GTI is a statement of quality and exclusivity. From the height-adjustable sports seats, with firm lateral support and front seat centre armrest, to the use of the finest materials such as the leather rimmed three-spoke steering wheel, sports gear shift and handbrake lever. The standard equipment level

continues with front and rear carpet mats, remote central locking and alarm, electronic climate control, electric windows, electrically-adjustable and heated door mirrors, stylish 15 inch 'Avus II' alloy wheels and, on five door models, a rear seat centre armrest with compartment box.

Whichever engine you choose, the performance is sure to impress. The 2.0 litre 115 PS engine is capable of 0 - 62 mph in just 10.5 seconds. If a GTI class diesel is more your style, there's the 'Pumpe Düse' 1.9 litre GT TDI PD 130 PS.



The sporty, but classic, interior. Standard equipment includes 'Gamma' radio/cassette, electronic climate control, front-loading single CD player and electric windows (front and rear operation on five door models).

The Golf GTI 150 PS

The GTI 1.8T and GTI 1.9 PD offer the perfect combination of style, performance and comfort. Their distinctive interiors are elegantly finished with black wood inserts to the centre console, ashtray lid, gear knob and inside door handles and are complemented by a leather rimmed sports steering wheel and handbrake grip. The front sports seats include lumbar adjustment for maximum comfort. External aesthetics are enhanced with 16 inch 'Montreal II' alloy

Interior shown is 1.8T with optional dash-mounted six CD autochanger.

wheels and 205/55 low profile tyres and colour co-ordinated bumper strips.

The heart of the GTI is its engine – choose from one of two 1.8 litre, 20V turbocharged petrol units developing 150 PS and 180 PS or one of the most powerful diesels produced by Volkswagen – the 1.9 litre TDI PD developing 150 PS. The GTI 1.8T 180 PS will reach 62 mph in 7.9 seconds and go on to 138 mph where the law permits. The 150 PS units are also impressive with a 0 - 62 mph time and a top speed of 8.5 seconds (8.6 seconds for the GTI 1.9 PD)

and 180 PS.

and 134 mph (where the law permits) respectively. In addition, the GTI 1.8T 180 PS and the GTI 1.9 PD both benefit from a six speed gearbox.

To accommodate such impressive performance, lowered suspension and ESP (including EDL and ASR) are standard.

These two features play a significant role in the GTI's adept handling and superb roadholding.



Interior shown is V5 with optional cruise control, navigation/radio system and leather upholstery with heated front 'Recaro' seats.



The dash-mounted CD autochanger provides hours of uninterrupted listening pleasure.



'Montreal II' 16" alloy wheels with 205/55 tyres are standard on the V5.



A rain sensor regulates the speed of the wipers depending on the weather.

The Golf V5.

The Golf V5 is available in three or five door and is the epitome of performance with understated luxury. Externally you'll be captivated by its 16 inch 'Montreal II' alloy wheels, darkened rear lenses and front fog lights.

Examine the interior and you'll be attracted by its electronic climate control, sports seats, six CD dash-mounted autochanger, rain sensitive windscreen wipers, automatic dimming rear-view mirror and three rear head restraints.

But nothing can quite prepare you for the open road

when you can unleash the sheer pleasure of its super smooth improved V5 engine. The V5 now benefits from four valves per cylinder, boosting power to 170 PS and achieving 0 - 62 mph in 8.2 seconds. The V5 is also available with a five speed automatic tiptronic transmission.



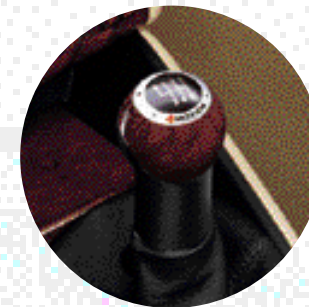
Interior shown is V6 4MOTION with optional navigation/radio system and leather upholstery.

The Golf

V6 4MOTION.



The four valves per cylinder V6 engine.



The V6 4MOTION features an 'intelligent' four wheel drive system.



Electronic climate control is a welcome feature on the V6 4MOTION. The navigation/radio system is optional at extra cost.

When a car is powered by a V6 engine and employs four wheel drive, you can expect outstanding performance and roadholding. The Golf V6 4MOTION is such a car and it should satisfy your highest expectations.

The new V6 benefits from four valves per cylinder, boosting power to a massive 204 PS. Such capability is applied with the utmost safety thanks to the intelligent four wheel drive and Electronic Stabilisation Programme (ESP) that creates exceptional traction and stability.

Its specification is equally distinctive and builds on the extensive equipment of the V5. Notable features include 16 inch 'Brands Hatch' alloy wheels, a six speed gearbox, chrome twin exhaust tailpipe and a 4MOTION gear knob.

Optional equipment.

Refreshingly different.



24
25

Factory-fitted options: Sunroof and Winter pack including headlight washer system available on all models. BBS 'RS2' alloy wheels available on GTI 1.8T 150 PS and GTI 1.9 PD.

Navigation/radio systems

The combined satellite navigation and radio unit offers route guidance via the display of road maps, route information, spoken instructions and visual arrow symbols in the centre of the instrument panel. Radio functions and control of the optional boot-mounted six CD autochanger are also provided. The navigation CD reader is mounted in the top of the unit. Please note that the unit will only accept the navigation CDs and NOT audio CDs.

Alternatively, you can choose the monochrome navigation system, radio and CD player in one unit. Route guidance is supplied via arrow symbols in both the unit and a display in the centre of the instrument panel, together with audible recommendations. The CD slot can be used for music CDs when the navigation system is not in use. In addition, this system will also operate the optional boot-mounted six CD

autochanger. The monochrome navigation system is available as a factory-fitted option at extra cost on GTI models and above.

Please note the separate front-loading single CD player, dash-mounted six CD autochanger, Digital Sound Processor (DSP) or navigation/radio system are not available in conjunction with each other. Please note that a navigation system with five inch colour screen including DSP is available as a separate option on GTI 1.8T and GTI 1.9 PD models only.



The combined satellite navigation and radio unit is available as a factory-fitted option at extra cost on all models except E, Match and SE.



Navigation, radio and CD player in one unit with monochrome screen.



The dash-mounted six CD autochanger can be added to either the 'Beta' or 'Gamma' units. Standard on V5, V6 4MOTION and optional on all other models.



The 'Delta' unit incorporating DSP, radio and single CD player is available as an option on SE models and above.

In-car hi-fi

The sound systems in the Golf have been tailored specifically for Volkswagen. High specification units have been chosen to deliver the best sound possible.

The 'Delta' system allows you to combine the benefits of digital room simulations available on DSP with a single CD player in one unit. Please note that with this option a boot-mounted six CD autochanger replaces the dash-mounted six CD autochanger on models where fitted as standard.

The Digital Sound Processor

The optional Digital Sound Processor (DSP) can transform the 'Gamma' hi-fi system. The system features an external four channel 70 watt amplifier and eight high performance speakers. DSP is fitted in line with the radio unit and processes all signals from the radio, cassette or CD.

The loudspeakers in a car are set at different distances from the listener. DSP smoothes out the subsequent imbalance, giving the impression of being 'in the heart of the music'.

In addition, DSP offers five digital room simulations. Whether it be clearly audible spoken words, reproduction of modern pop music, classical music in a concert hall, rock music at an open air festival or jazz in a club, all can be selected by the push of a button. Available on SE models and above.



Please note that DSP is only available in conjunction with the 'Gamma' radio/cassette, but not with dash-mounted six CD autochanger, front-loading single CD player, 'Delta' radio or navigation systems.

Integrated child seats

By simply folding back and raising the normal seat, a child can use the normal three-point seat belts. It provides effective protection and is positioned in seconds.

The integrated child seat is suitable for children classified by ECE-R¹ 44/03 standard in Group One (nine to 18 kg), Group Two (15-25 kg) and Group Three (22-36 kg).

We recommend, however, that the child seat only be used for children as of the age of two years.

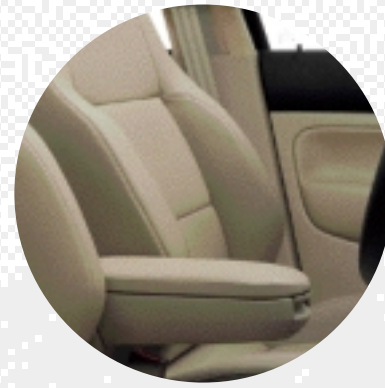
Please note that children in Group One require a special



Preparing your car to carry children needn't be a lengthy operation.

restraining table which has been approved for use with the integrated child seat and which is available from your Volkswagen retailer. This option is not available with leather upholstery with 'Recaro' seats.

¹Economic Commission of Europe – Regulation.



The sumptuous part leather interior comes complete with heated front seats, lumbar support and rear head restraints.

Leather upholstery

For an exclusive feel, you can't beat natural leather. It not only creates a classic and elegant ambience, it's highly practical too. It provides great comfort, is extremely hard-wearing and is easy to clean and maintain. This option is available on SE models and above.



A multifunction steering wheel is a convenient addition.

Multifunction steering wheel

The multifunction steering wheel with cruise control allows you to operate the cruise control and radio controls without taking your hands off the wheel. For a comfortable grip, it is trimmed in leather. Standard on SE and optional on GTI models and above.



Cruise control provides a more relaxed drive on longer journeys.

Cruise control

Ideal for long motorway journeys, cruise control allows a speed to be programmed that will be automatically maintained. Activating the brake or clutch will deactivate the cruise control, but the last stored speed will be held in the memory, allowing you to resume cruising speed at the touch of a button. Standard on SE and optional on GTI models and above.



The retractable headlight washer system provides a highly effective method of removing dirt for improved night-time visibility.

The Winter pack

During the coldest months the optional Winter pack provides a touch more comfort as well as additional safety. It includes heated front seats with five preset temperature settings, powerful headlight washer jets, heated windscreen washer jets and a warning light to indicate when the screenwash is running low.

Wheels

Alternative designs are available to create a distinctive and individual finish to your Golf.

All wheels are designed and constructed to the highest standards and are fitted with anti-theft wheel bolts.



The elegant 'Avus II' 15" alloy wheels are available for the E and SE models. They are fitted with 195/65 R15 tyres and anti-theft wheel bolts.



'Santa Monica' 17" alloy wheels with 225/45 R17 tyres come complete with sports suspension. Available for the SE, all GTI, V5 and V6 4MOTION models.

Parking sensor

This ingenious system makes parking in the smallest spaces so much easier. Sensors in the rear bumper operate by ultrasound and emit a bleep. As objects get closer, the sound signal becomes more frequent. Available on Match models and above.

Curtain airbags

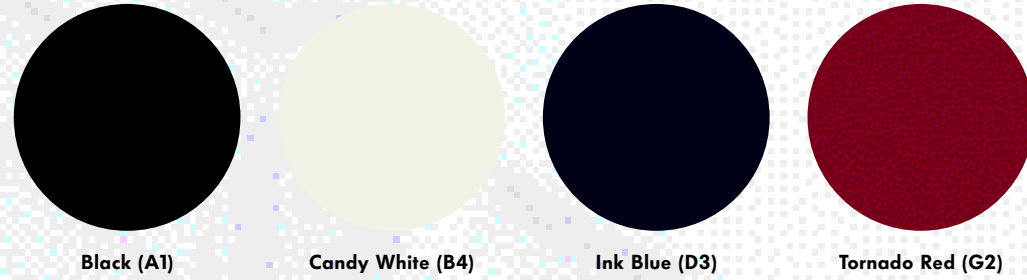
Airbags are a proven safety feature and every Golf is fitted with four as standard. This option provides two additional curtain airbags that are situated in the roof lining. They cover the side window areas to help protect the head during side impact or a rollover.



Curtain airbags help protect the head from injury during a side impact.

Exterior paintwork.

Non-Metallic paint



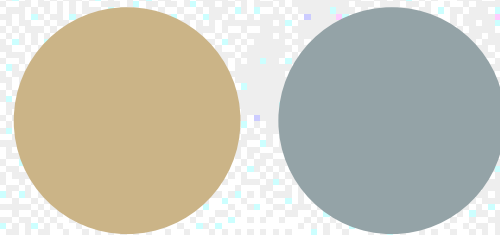
Black (A1)

Candy White (B4)

Ink Blue (D3)

Tornado Red (G2)

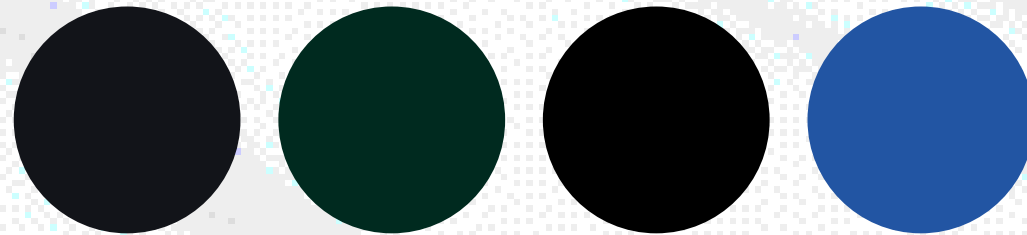
Metallic paint*



Desert Beige (1W)¹

Reflex Silver (8E)

Pearl Effect paint*

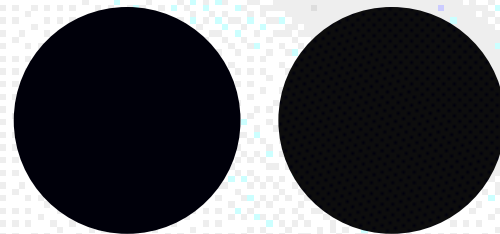


Grey Anthracite (F8)

Bright Green (T3)

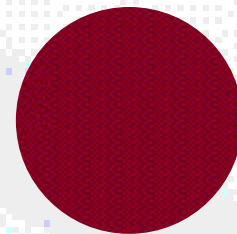
Diamond Black (Z4)

Jazz Blue (1D)



Indigo Blue (7D)

Oceanic Green (8Z)



Berry Red (9W)¹

Please note: The print process does not allow for exact reproduction of the paint and upholstery colours. For further details, please contact your Volkswagen retailer.

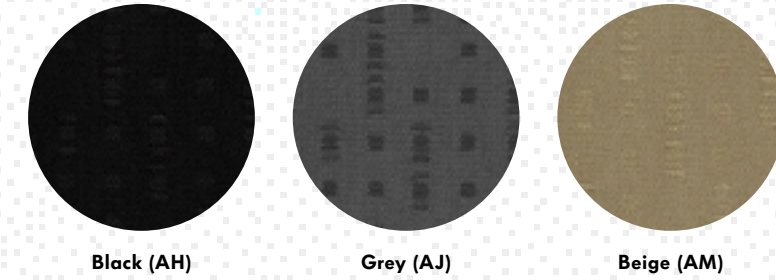
* Metallic and Pearl Effect paint are optional at extra cost.

¹ Desert Beige 1W and Berry Red 9W are not available on V6 4MOTION models.

² Grey RF and Beige RG are not available on GTI 150 PS and 180 PS models.

A choice of upholstery.

E, Match 'Airport' cloth

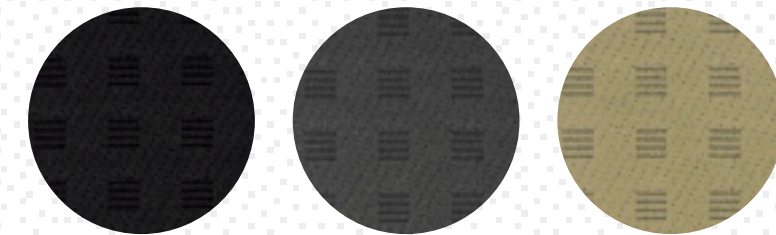


Black (AH)

Grey (AJ)

Beige (AM)

SE 'Motion' velour

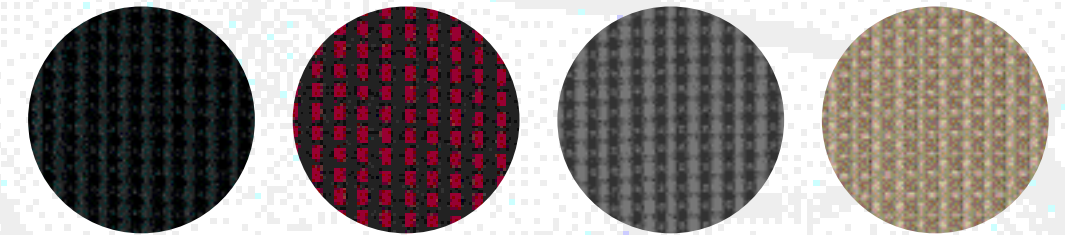


Black (CM)

Grey (CR)

Beige (CZ)

All GTI², V5, V6 4MOTION Sports seats in interwoven velour

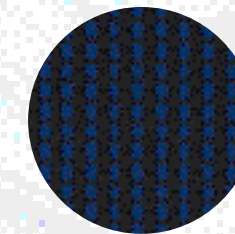


Black/Anthracite (RD)

Black/Red (RE)

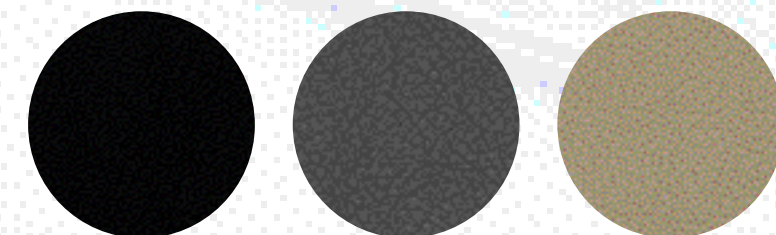
Grey (RF)²

Beige (RG)²



Black/Blue (RJ)

SE[†], All GTI, V5, V6 4MOTION Sports seats Part leather



Black (VA)[†]

Flannel Grey (VE)[†]

Beige (VH)[†]

Black (VV)

Flannel Grey (VR)

Beige (VW)

All GTI, V5, V6 4MOTION 'Recaro' sports seats Part leather

Colour combinations.

Seat upholstery		Carpets	Dashboard	Paints													
				Black A1	Candy White B4	Ink Blue D3	Tomado Red G2	Desert Beige Metallic 1W ¹	Reflex Silver Metallic 8E*	Grey Anthracite Pearl Effect F8*	Bright Green Pearl Effect T3*	Diamond Black Pearl Effect Z4*	Jazz Blue Pearl Effect ID*	Indigo Blue Pearl Effect 7D*	Oceanic Green Pearl Effect 8Z*	Berry Red Pearl Effect 9W ¹	
E, Match – ‘Airport’ cloth																	
Black	AH	Black	Black	●	●	●	●	●	●	●	●	●	●	●	●		
Grey	AJ	Grey	Black/Grey	●	●	●	●	●	●	●	●	●	●	●	●		
Beige	AM	Beige	Black/Beige	●	●	●	-	●	-	●	●	●	●	●	●		
SE – ‘Motion’ velour																	
Black	CM	Black	Black	●	●	●	●	●	●	●	●	●	●	●	●		
Grey	CR	Grey	Black/Grey	●	●	●	●	●	●	●	●	●	●	●	●		
Beige	CZ	Beige	Black/Beige	●	●	●	-	●	-	●	●	●	●	●	●		
Sports seats in interwoven velour																	
All GTI², V5, V6 4MOTION																	
Black/Anthracite	RD	Black	Black	●	●	●	●	●	●	●	●	●	●	●	●		
Black/Red	RE	Black	Black	●	●	-	●	-	●	●	-	●	-	-	●		
Grey	RF ²	Grey	Black/Grey	●	●	●	●	●	●	●	●	●	●	●	●		
Beige	RG ²	Beige	Black/Beige	●	●	●	-	●	-	●	●	●	●	●	●		
Black/Blue	RJ	Black	Black	●	●	●	-	-	●	●	-	●	●	-	-		
Sports seats in part leather																	
SE³, All GTI¹, V5⁴, V6 4MOTION⁴																	
Black	VA ³ /VV ⁴	Black	Black	○	○	○	○	○	○	○	○	○	○	○	○		
Flannel Grey	VE ³ /VR ⁴	Grey	Black/Grey	○	○	○	○	-	○	○	○	○	-	○	○		
Beige	VH ³ /VW ⁴	Beige	Black/Beige	○	○	○	-	○	-	○	○	○	○	○	○		
‘Recaro’ sports seats in part leather																	
All GTI, V5, V6 4MOTION																	
Flannel Grey	VR	Grey	Black/Grey	○	○	○	○	-	○	○	○	○	○	○	○		
Black	VV	Black	Black	○	○	○	○	○	○	○	○	○	○	○	○		
Beige	VW	Beige	Black/Beige	○	○	○	-	○	-	○	○	○	○	○	○		

● Standard ○ Optional at extra cost - Not available

* Metallic and Pearl Effect paint are optional at extra cost.

¹ Desert Beige 1W and Berry Red 9W are not available on V6 4MOTION models.

² Grey RF and Beige RG are not available on GTI 150 PS and 180 PS models.

³ SE leather upholstery codes are VA, VE and VH.

⁴ All GTI, V5 and V6 4MOTION leather upholstery codes are VV, VR and VW.

Technical specification.

	E, Match 1.4 litre 75 PS	Match, SE 1.6 litre 102 PS (Automatic only)	Match, SE 1.6 litre 105 PS	GTI 2.0 litre 115 PS	GTI 1.8T 1.8 litre 20V 150 PS	GTI 1.8T 1.8 litre 20V 180 PS	V5 2.3 litre 20V 170 PS	V6 4MOTION 2.8 litre 204 PS	
Engine:	<i>Front in-line transversely mounted. Hydraulic maintenance-free tappets. Heavy duty cooling system suitable for towing. Electrically driven, thermostatically controlled cooling fan. Light alloy cross flow cylinder head with belt driven double overhead camshaft (single overhead camshaft on 1.6 litre 102 PS auto and 2.0 litre 115 PS)</i>				<i>Front in-line transversely mounted. Hydraulic maintenance-free tappets. Heavy duty cooling system suitable for towing. Electrically driven, thermostatically controlled cooling fan. Light alloy cross flow cylinder head with belt driven double overhead camshaft (Five/Six cylinder 15° 'V' on V5 and V6 engines)</i>				
<i>Number of valves</i>	<i>Four per cylinder</i>	<i>Two per cylinder</i>	<i>Four per cylinder</i>	<i>Two per cylinder</i>	<i>Five per cylinder</i>	<i>Five per cylinder</i>	<i>Four per cylinder</i>	<i>Four per cylinder</i>	
<i>Cubic capacity, ltrs/cc</i>	<i>1.4/1390</i>	<i>1.6/1595</i>	<i>1.6/1598</i>	<i>2.0/1984</i>	<i>1.8/1781</i>	<i>1.8/1781</i>	<i>2.3/2324</i>	<i>2.8/2792</i>	
<i>Bore/stroke, mm</i>	<i>76.5/75.6</i>	<i>81.0/77.4</i>	<i>76.5/86.9</i>	<i>82.5/92.8</i>	<i>81.0/86.4</i>	<i>81.0/86.4</i>	<i>81.0/90.2</i>	<i>81.0/90.3</i>	
<i>Max. output, PS*/kW</i>	<i>75/55</i>	<i>102/75</i>	<i>105/77</i>	<i>115/85</i>	<i>150/110</i>	<i>180/132</i>	<i>170/125</i>	<i>204/150</i>	
<i>at rpm</i>	<i>5000</i>	<i>5600</i>	<i>5700</i>	<i>5400</i>	<i>5700</i>	<i>5500</i>	<i>6200</i>	<i>6200</i>	
<i>Max. torque, lbs.ft/Nm</i>	<i>93/126</i>	<i>109/148</i>	<i>109/148</i>	<i>127/172</i>	<i>155/210</i>	<i>173/235</i>	<i>162/220</i>	<i>199/270</i>	
<i>at rpm</i>	<i>3300</i>	<i>3800</i>	<i>4500</i>	<i>3200</i>	<i>1750-4600</i>	<i>1950</i>	<i>3200</i>	<i>3200</i>	
<i>Compression ratio</i>	<i>10.5 : 1</i>	<i>10.3 : 1</i>	<i>11.5 : 1</i>	<i>10.3 : 1</i>	<i>9.3 : 1</i>	<i>9.5 : 1</i>	<i>10.8 : 1</i>	<i>10.5 : 1</i>	
<i>Induction</i>	<i>Electronic multipoint injection, single cylinder injection</i>	<i>Electronic multipoint injection, variable inlet manifold</i>	<i>Electronic multipoint injection, single cylinder injection</i>	<i>Electronic multipoint injection, single cylinder injection</i>	<i>Electronic multipoint injection, single cylinder injection</i>	<i>Electronic multipoint injection, single cylinder injection</i>	<i>Electronic multipoint injection, variable inlet manifold</i>	<i>Electronic multipoint injection, variable inlet manifold</i>	
<i>Exhaust emission control</i>	<i>Catalytic converter lambda control</i>	<i>Catalytic converter lambda control</i>	<i>Catalytic converter lambda control</i>	<i>Catalytic converter lambda control</i>	<i>Catalytic converter lambda control</i>	<i>Catalytic converter lambda control</i>	<i>Catalytic converter lambda control</i>	<i>Catalytic converter lambda control</i>	
<i>Fuel grade, minimum</i>	<i>Premium 95 RON unleaded</i>	<i>Premium 95 RON unleaded</i>	<i>Premium 95 RON unleaded</i>	<i>Premium 95 RON unleaded</i>	<i>Premium 95 RON unleaded</i>	<i>Premium 95 RON unleaded</i>	<i>Premium 95 RON unleaded</i>	<i>Premium 95 RON unleaded</i>	
<i>Battery, A (Ah)</i>	<i>220 (44)</i>	<i>280 (60)</i>	<i>220 (44)</i>	<i>220 (44)</i>	<i>220 (44)</i>	<i>280 (60)</i>	<i>280 (60)</i>	<i>280 (60)</i>	
<i>Alternator, amps</i>	<i>70</i>	<i>70</i>	<i>70</i>	<i>70</i>	<i>70</i>	<i>70</i>	<i>70</i>	<i>70</i>	
Transmission:	<i>Front wheel drive</i>	<i>Front wheel drive</i>	<i>Front wheel drive</i>	<i>Front wheel drive</i>	<i>Front wheel drive</i>	<i>Front wheel drive</i>	<i>Front wheel drive</i>	<i>Four wheel drive</i>	
<i>Gearbox</i>	<i>Five speed manual</i>	<i>Four speed auto</i>	<i>Five speed manual</i>	<i>Five speed manual</i>	<i>Five speed manual</i>	<i>Six speed manual</i>	<i>Five speed manual</i>	<i>Five speed auto tiptronic</i>	<i>Six speed manual</i>
Performance (with half payload):									
<i>Top speed, mph (km/h)</i>									
<i>(where the law permits)</i>	<i>106 (171)</i>	<i>115 (185)</i>	<i>119 (192)</i>	<i>121 (195)</i>	<i>134 (216)</i>	<i>138 (222)</i>	<i>139 (224)</i>	<i>137 (220)</i>	<i>146 (235)</i>
<i>Acceleration, secs 0 - 62 mph</i>	<i>14.0</i>	<i>12.7</i>	<i>10.8</i>	<i>10.5</i>	<i>8.5</i>	<i>7.9</i>	<i>8.2</i>	<i>8.9</i>	<i>7.1</i>
<i>ABI insurance group</i>	<i>4</i>	<i>5, 6</i>	<i>5, 6</i>	<i>10</i>	<i>14</i>	<i>16E</i>	<i>15</i>	<i>15</i>	<i>17</i>
Environmental information:									
<i>Official fuel consumption according to EU Directive 99/94, mpg/ltr per 100 km</i>									
<i>Urban</i>	<i>31.0/9.1</i>	<i>24.1/11.7</i>	<i>29.7/9.5</i>	<i>25.0/11.3</i>	<i>26.2/10.8</i>	<i>24.1/11.7</i>	<i>22.6/12.5</i>	<i>20.3/13.9</i>	<i>17.9/15.8</i>
<i>Extra-urban</i>	<i>51.4/5.5</i>	<i>44.1/6.4</i>	<i>49.6/5.7</i>	<i>45.6/6.2</i>	<i>44.8/6.3</i>	<i>43.5/6.5</i>	<i>42.2/6.7</i>	<i>38.2/7.4</i>	<i>34.0/8.3</i>
<i>Combined</i>	<i>41.5/6.8</i>	<i>33.6/8.4</i>	<i>39.8/7.1</i>	<i>34.9/8.1</i>	<i>35.3/8.0</i>	<i>33.6/8.4</i>	<i>32.1/8.8</i>	<i>28.8/9.8</i>	<i>25.4/11.1</i>
<i>Fuel tank capacity, galls/ltrs</i>	<i>12.1/55</i>	<i>12.1/55</i>	<i>12.1/55</i>	<i>12.1/55</i>	<i>12.1/55</i>	<i>12.1/55</i>	<i>12.1/55</i>	<i>12.1/55</i>	<i>13.8/63</i>
<i>Official CO₂ emission, g/km¹</i>	<i>163</i>	<i>201</i>	<i>170</i>	<i>194</i>	<i>192</i>	<i>202</i>	<i>211</i>	<i>235</i>	<i>266</i>
<i>Noise, dB</i>	<i>73</i>	<i>69</i>	<i>71</i>	<i>72</i>	<i>71</i>	<i>TBA</i>	<i>72</i>	<i>73</i>	<i>74</i>

* Please note: The maximum power output figures are quoted in PS (or Pferdestärke, which is the metric equivalent of horsepower). To convert from metric to imperial horsepower, divide the PS figure by 1.0139.

¹ Please see page 47 for further information on CO₂ emissions.

Specifications subject to change without notice. Information correct as at 1 February 2003. Please note: All data subject to manufacturer's tolerances.

Technical specification.

	E, Match 1.4 litre 75 PS	Match, SE 1.6 litre 102 PS (Automatic only)	Match, SE 1.6 litre 105 PS	GTI 2.0 litre 115 PS	GTI 1.8T 1.8 litre 20V 150 PS	GTI 1.8T 1.8 litre 20V 180 PS	V5 2.3 litre 20V 170 PS	V6 4MOTION 2.8 litre 204 PS	
Running gear:									
Front axle	McPherson suspension struts and coil springs. Anti-roll bar. Track stabilising steering geometry				McPherson suspension struts and coil springs. Anti-roll bar. Track stabilising steering geometry				
Rear axle	Torsion beam trailing arm with track-correcting bearings and anti-roll bar				Torsion beam trailing arm with track-correcting bearings and anti-roll bar (double wishbones with trailing arms – V6 only)				
Steering	Power-assisted, maintenance-free rack and pinion. Collapsible steering column				Power-assisted, maintenance-free rack and pinion. Collapsible steering column				
Brakes system	ABS with EBD. Diagonally split circuits. Servo assisted				ABS with EBD. Diagonally split circuits. Servo assisted				
Front	Ventilated discs	Ventilated discs	Ventilated discs	Ventilated discs	Ventilated discs	Ventilated discs	Ventilated discs	Ventilated discs	
Rear	Discs	Discs	Discs	Discs	Discs	Discs	Ventilated discs	Ventilated discs	
Turning circle, ft/m	35.8/10.9	35.8/10.9	35.8/10.9	35.8/10.9	35.8/10.9	35.8/10.9	35.8/10.9	35.8/10.9	

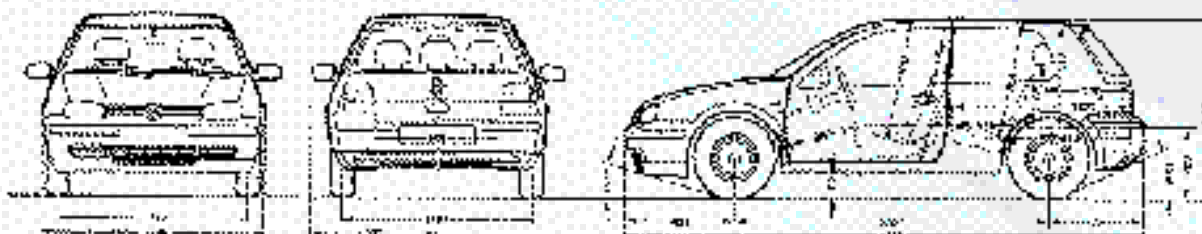
Wheels and tyres:								
Wheel size	6J x 14 ¹	6J x 14 ¹	6J x 14 ¹	6J x 15	6½J x 16	6½J x 16	6½J x 16	6½J x 16
Wheel type	Steel ¹	Steel ¹	Steel ¹	Alloy 'Avus II'	Alloy 'Montreal II'	Alloy 'Montreal II'	Alloy 'Montreal II'	Alloy 'Brands Hatch'
Tyre size	175/80 R14T ¹	175/80 R14H ¹	175/80 R14H ¹	195/65 R15V	205/55 R16W	205/55 R16W	205/55 R16W	205/55 R16W
Spare wheel	Full size steel	Full size steel	Full size steel	Full size steel	Full size steel	Full size steel	Full size steel	Space-saver steel

Weights, lbs/kgs:									
	Five speed manual	Four speed auto	Five speed manual	Five speed manual	Five speed manual	Six speed manual	Five speed manual	Five speed auto tiptronic	Six speed manual
Unladen weight [†] incl. driver	2792/1266	2924/1326	2889/1310	2919/1324	2928/1328	2842/1289	3008/1364	3127/1418	3356/1522
Gross vehicle weight	3682/1670	3815/1730	3771/1710	3815/1730	3815/1730	3859/1750	3903/1770	4013/1820	4256/1930
Payload [†]	891/404	891/404	882/400	895/406	886/402	1017/461	895/406	886/402	900/408
Axle load limit: Front	1896/860	2029/920	1984/900	2029/920	2029/920	2073/940	2117/960	2227/1010	2227/1010
Rear	1940/880	1940/880	1940/880	1940/880	1940/880	1852/840	1940/880	1940/880	2183/990

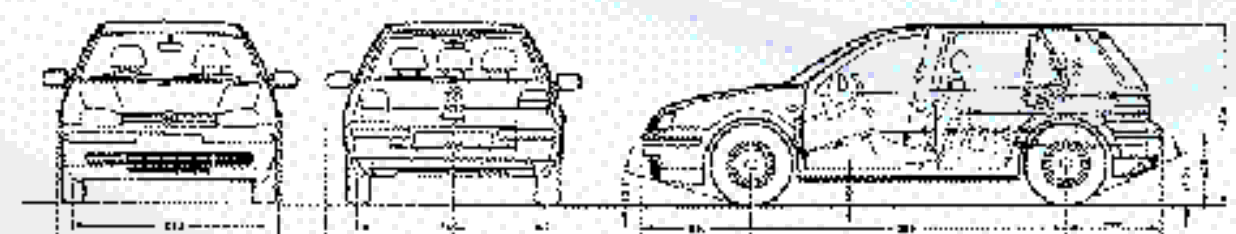
Trailer load limits, lbs/kgs:									
Braked 12% incline	2205/1000	2646/1200	2646/1200	3087/1400	2866/1300	2866/1300	3307/1500	3307/1500	3307/1500
Unbraked	1279/580	1323/600	1323/600	1323/600	1323/600	1323/600	1433/650	1433/650	1543/700
Towbar load	165/75	165/75	165/75	165/75	165/75	165/75	165/75	165/75	165/75
Max. roof load	165/75	165/75	165/75	165/75	165/75	165/75	165/75	165/75	165/75

Max. luggage capacity, cu.ft (litres):	VDA measuring method using 200 x 100 x 50 mm blocks				VDA measuring method using 200 x 100 x 50 mm blocks			
With rear seat upright	11.7 (330)	11.7 (330)	11.7 (330)	11.7 (330)	11.7 (330)	11.7 (330)	11.7 (330)	8.7 (245)
With rear seat folded	41.8 (1184)	41.8 (1184)	41.8 (1184)	41.8 (1184)	41.8 (1184)	41.8 (1184)	41.8 (1184)	38.7 (1099)

Exterior dimensions:



The Golf: Three door



The Golf: Five door

All figures in millimetres.

¹ Match models have 6J x 15 'Avus II' alloy wheels with 195/65 R15 tyres and anti-theft wheel bolts.

[†] Figures are calculated in accordance with manufacturer's criteria.

Technical specification.

	E 1.9 litre SDI 68 PS	Match, SE 1.9 litre TDI PD 100 PS	GT TDI PD 1.9 litre TDI PD 130 PS	GTI 1.9 PD 1.9 litre TDI PD 150 PS
Engine:				
	<i>Front in-line transversely mounted.</i>	<i>Front in-line transversely mounted.</i>	<i>Front in-line transversely mounted.</i>	<i>Front in-line transversely mounted.</i>
	<i>Hydraulic maintenance-free tappets.</i>	<i>Hydraulic maintenance-free tappets.</i>	<i>Hydraulic maintenance-free tappets.</i>	<i>Hydraulic maintenance-free tappets.</i>
	<i>Heavy duty cooling system suitable for towing. Electrically driven, thermostatically controlled cooling fan.</i>	<i>Heavy duty cooling system suitable for towing. Electrically driven, thermostatically controlled cooling fan.</i>	<i>Heavy duty cooling system suitable for towing. Electrically driven, thermostatically controlled cooling fan.</i>	<i>Heavy duty cooling system suitable for towing. Electrically driven, thermostatically controlled cooling fan.</i>
	<i>Alloy cylinder head with belt driven single overhead camshaft</i>	<i>Alloy cylinder head with belt driven single overhead camshaft</i>	<i>Alloy cylinder head with belt driven single overhead camshaft</i>	<i>Alloy cylinder head with belt driven single overhead camshaft</i>
<i>Number of valves</i>	<i>Two per cylinder</i>	<i>Two per cylinder</i>	<i>Two per cylinder</i>	<i>Two per cylinder</i>
<i>Cubic capacity, ltrs/cc</i>	<i>1.9/1896</i>	<i>1.9/1896</i>	<i>1.9/1896</i>	<i>1.9/1896</i>
<i>Bore/stroke, mm</i>	<i>79.5/95.5</i>	<i>79.5/95.5</i>	<i>79.5/95.5</i>	<i>79.5/95.5</i>
<i>Max. output, PS*/kW</i>	<i>68/50</i>	<i>100/74</i>	<i>130/96</i>	<i>150/110</i>
<i>at rpm</i>	<i>4200</i>	<i>4000</i>	<i>4000</i>	<i>4000</i>
<i>Max. torque, lbs.ft/Nm</i>	<i>98/133</i>	<i>177/240</i>	<i>228/310</i>	<i>236/320</i>
<i>at rpm</i>	<i>2200-2600</i>	<i>1800</i>	<i>1900</i>	<i>1900</i>
<i>Compression ratio</i>	<i>19.5 : 1</i>	<i>19.0 : 1</i>	<i>19.0 : 1</i>	<i>18.5 : 1</i>
<i>Induction</i>	<i>Direct injection – distributor pump, naturally aspirated</i>	<i>Direct injection – with unit injectors, turbocharged with intercooler</i>	<i>Direct injection – with unit injectors, turbocharged with intercooler</i>	<i>Direct injection – with unit injectors, turbocharged with intercooler</i>
<i>Exhaust emission control</i>	<i>Catalytic converter</i>	<i>Catalytic converter</i>	<i>Catalytic converter</i>	<i>Catalytic converter</i>
<i>Fuel grade, minimum</i>	<i>Diesel</i>	<i>Diesel</i>	<i>Diesel</i>	<i>Diesel</i>
<i>Battery, A (Ah)</i>	<i>340 (70)</i>	<i>340 (70)</i>	<i>340 (70)</i>	<i>340 (70)</i>
<i>Alternator, amps</i>	<i>120</i>	<i>120</i>	<i>120</i>	<i>120</i>
Transmission:	<i>Front wheel drive</i>	<i>Front wheel drive</i>	<i>Front wheel drive</i>	<i>Front wheel drive</i>
<i>Gearbox</i>	<i>Five speed manual</i>	<i>Five speed manual</i>	<i>Five speed auto tiptronic¹</i>	<i>Six speed manual</i>
Performance (with half payload):				
<i>Top speed, mph (km/h)</i>				
<i>(where the law permits)</i>	<i>99 (160)</i>	<i>117 (188)</i>	<i>114 (184)</i>	<i>127 (205)</i>
<i>Acceleration, secs 0 - 62 mph</i>	<i>17.2</i>	<i>11.3</i>	<i>12.7</i>	<i>9.6</i>
<i>ABI insurance group</i>	<i>4</i>	<i>6, 8</i>	<i>6, 8</i>	<i>14</i>
Environmental information:				
<i>Official fuel consumption according to EU Directive 99/94, mpg/ltr per 100 km</i>				
<i>Urban</i>	<i>39.8/7.1</i>	<i>41.5/6.8</i>	<i>32.1/8.8</i>	<i>39.8/7.1</i>
<i>Extra-urban</i>	<i>64.2/4.4</i>	<i>64.2/4.4</i>	<i>53.3/5.3</i>	<i>62.8/4.5</i>
<i>Combined</i>	<i>53.3/5.3</i>	<i>53.3/5.3</i>	<i>42.8/6.6</i>	<i>52.3/5.4</i>
<i>Fuel tank capacity, galls/ltrs</i>	<i>12.1/55</i>	<i>12.1/55</i>	<i>12.1/55</i>	<i>12.1/55</i>
<i>Official CO₂ emission, g/km¹</i>	<i>143</i>	<i>143</i>	<i>178</i>	<i>146</i>
<i>Noise, dB</i>	<i>73</i>	<i>74</i>	<i>69</i>	<i>74</i>

¹ Five speed auto tiptronic is not available on Match models.

* Please note: The maximum power output figures are quoted in PS (or Pferdestärke, which is the metric equivalent of horsepower). To convert from metric to imperial horsepower, divide the PS figure by 1.0139.

¹ Please see page 47 for further information on CO₂ emissions.

Specifications subject to change without notice. Information correct as at 1 February 2003. Please note: All data subject to manufacturer's tolerances.

Technical specification.

	E 1.9 litre SDI 68 PS	Match, SE 1.9 litre TDI PD 100 PS	GT TDI PD 1.9 litre TDI PD 130 PS	GTI 1.9 PD 1.9 litre TDI PD 150 PS	
Running gear:					
Front axle	McPherson suspension struts and coil springs. Anti-roll bar. Track stabilising steering geometry	McPherson suspension struts and coil springs. Anti-roll bar. Track stabilising steering geometry	McPherson suspension struts and coil springs. Anti-roll bar. Track stabilising steering geometry	McPherson suspension struts and coil springs. Anti-roll bar. Track stabilising steering geometry	
Rear axle	Torsion beam trailing arm with track-correcting bearings and anti-roll bar	Torsion beam trailing arm with track-correcting bearings and anti-roll bar	Torsion beam trailing arm with track-correcting bearings and anti-roll bar	Torsion beam trailing arm with track-correcting bearings and anti-roll bar	
Steering	Power-assisted, maintenance-free rack and pinion. Collapsible steering column	Power-assisted, maintenance-free rack and pinion. Collapsible steering column	Power-assisted, maintenance-free rack and pinion. Collapsible steering column	Power-assisted, maintenance-free rack and pinion. Collapsible steering column	
Brakes system	ABS with EBD. Diagonally split circuits.	ABS with EBD. Diagonally split circuits.	ABS with EBD. Diagonally split circuits.	ABS with EBD. Diagonally split circuits.	
Front	Servo assisted Ventilated discs	Servo assisted Ventilated discs	Servo assisted Ventilated discs	Servo assisted Ventilated discs	
Rear	Discs	Discs	Discs	Discs	
Turning circle, ft/m	35.8/10.9	35.8/10.9	35.8/10.9	35.8/10.9	
Wheels and tyres:					
Wheel size	6J x 14	6J x 15 ¹	6J x 15	6½J x 16	
Wheel type	Steel	Steel ¹	Alloy 'Avus II'	Alloy 'Montreal II'	
Tyre size	175/80 R14T	195/65 R15T ¹	195/65 R15V	205/55 R16W	
Spare wheel	Full size steel	Full size steel	Full size steel	Full size steel	
Weights, lbs/kgs:					
	Five speed manual	Five speed manual	Five speed auto tiptronic ²	Six speed manual	Six speed manual
Unladen weight [†] incl. driver	2884/1308	2999/1360	3105/1408	2721/1234	3061/1388
Gross vehicle weight	3771/1710	3881/1760	3991/1810	3925/1780	3947/1790
Payload [†]	886/402	882/400	886/402	TBA	886/402
Axle load limit: Front	2007/910	2117/960	2205/1000	2139/970	2161/980
Rear	1940/880	1940/880	1940/880	1940/880	1940/880
Trailer load limits, lbs/kgs:					
Braked 12% incline	1874/850	2866/1300		3087/1400	3087/1400
Unbraked	1323/600	1323/600		1323/600	1323/600
Towbar load	165/75	165/75		165/75	165/75
Max. roof load	165/75	165/75		165/75	165/75
Max. luggage capacity, cu.ft (litres): VDA measuring method using 200 x 100 x 50 mm blocks					
With rear seat upright	11.7 (330)	11.7 (330)		11.7 (330)	11.7 (330)
With rear seat folded	41.8 (1184)	41.8 (1184)		41.8 (1184)	41.8 (1184)

¹ Match models have 6J x 15 'Avus II' alloy wheels with 195/65 R15 tyres and anti-theft wheel bolts.

² Five speed auto tiptronic is not available on Match models.

[†] Figures are calculated in accordance with manufacturer's criteria.

Specifications subject to change without notice. Information correct as at 1 February 2003. Please note: All data subject to manufacturer's tolerances.

Standard equipment.

Safety and Security:

	E	Match	SE	GTI, GT TDI PD	GTI 150/180 PS	V5, V6 4MOTION
ABS: Anti-lock brakes with EBD	●	●	●	●	●	●
Airbags: Driver's, front passenger's and front seat side impact airbags	●	●	●	●	●	●
Alarm: Remote control, with interior protection	-	●	●	●	●	●
Body: Fully galvanised with 12-year anti-corrosion warranty	●	●	●	●	●	●
Door side impact protection	●	●	●	●	●	●
Rigid safety cell with front and rear crumple zones	●	●	●	●	●	●
Central locking: With security protection	●	●	●	●	●	●
Electronic engine immobiliser, coded transponder	●	●	●	●	●	●
ESP: Electronic Stabilisation Programme – includes EDL (Electronic Differential Lock) and ASR (Traction Control)	●	●	●	●	●	●
Head restraints: Front and rear outer, adjustable	●	●	●	●	●	●
Three rear	○	○	○	○	●	●
High level third brake light	●	●	●	●	●	●
Isofix child seat preparation for rear seat, outer positions	●	●	●	●	●	●
Seat belts: Front height-adjustable seat belts with tensioners	●	●	●	●	●	●
Rear outer three-point seat belts with tensioners	●	●	●	●	●	●
Rear centre lap belt	●	●	●	●	-	-
Rear centre three-point seat belt	○	○	○	○	●	●

Functional Equipment:

Door mirrors: Internally adjustable with wide angle vision on driver's side painted in body colour	●	-	-	-	-	-
Electrically heated and adjustable with wide angle vision on driver's side, painted in body colour with blue tinted glass	-	●	●	●	●	●
Dust and pollen filter	●	●	●	●	●	●
Computer: Multifunction, single and total journey memories. Information given on: Driving time, average fuel consumption, instantaneous fuel consumption, distance driven, average speed and external temperature (with electronic climate control, the external temperature is also shown in the air conditioning display)	-	●	●	●	●	●
Front fog lights: Integrated within the headlights	○	○	○	●	●	●
Headlights: Electric height adjustment	●	●	●	●	●	●
Heated rear window	●	●	●	●	●	●
In-car entertainment: 'Beta' radio/cassette, four front speakers, detachable roof aerial	●	●	-	-	-	-
'Gamma' radio/cassette, eight speakers, detachable roof aerial	-	-	●	●	●	●
Front-loading single CD player	-	●	●	●	●	-
CD autochanger, six disc, dash-mounted	○	○	○	○	○	●
Multifunction steering wheel including cruise control	-	-	●	○	○	○
Power-assisted steering	●	●	●	●	●	●
Rain sensor and automatic dimming interior rear-view mirror	○	○	○	○	○	●
Sports lowered chassis, 10 mm front/15 mm rear	-	-	-	○	●	○ ¹
Steering column: Height and reach adjustable	●	●	●	●	●	●
Sunroof: Glass electric slide and tilt with pre-select switch	○	○	○	○	○	○
Tinted rear light and side indicator lights	-	-	-	●	●	●
Warning buzzer for lights if left on	●	●	●	●	●	●
Windows: Electric front with roll back safety system (three door)	-	●	-	●	●	●
Electric front and rear with roll back safety system (five door)	-	●	●	●	●	●
Wipers: Front two speed with wash/wipe and intermittent wipe with four position delay	●	●	●	●	●	●
Rear screen wiper with automatic wash/wipe	●	●	●	●	●	●

Interior Equipment and Styling:

	E	Match	SE	GTI, GT TDI PD	GTI 150/180 PS	V5, V6 4MOTION
Anti-dazzle rear-view mirror	●	●	●	●	●	●
Carpet mats: Front and rear	-	-	-	●	●	●
Cup holder: Front, two	-	-	●	●	●	●
Rear, two in the centre console	-	-	-	●	●	●
Fuel filler flap: With remote locking	●	●	●	●	●	●
Gear knob, leather/wood	-	-	-	-	●	● ²
Heating: Air blending and ventilation system with four speed fan	●	●	●	●	●	●
Air conditioning, manual	○	●	●	-	-	-
Air conditioning, electronic climate control	-	○	○	●	●	●
Instruments: Speedo and rev counter, electronic odometer, trip and service interval display, digital clock, fuel and temperature gauge	●	●	●	●	●	●
Instrument lighting, blue adjustable panel illumination	●	●	●	●	●	●
Interior lighting: Reading lights, two	●	●	●	●	●	●
Load sill protection	●	●	●	●	●	●
Seating: Front driver's with height adjustment	●	●	-	-	-	-
Front driver's and passenger height adjustment	-	-	●	●	●	●
Easy entry (three door only)	-	-	●	●	●	●
One third to two thirds split folding rear seats	●	●	●	●	●	●
Front sports seats with height adjustment	-	-	-	●	-	●
Front sports seats with height and lumbar adjustment	-	-	-	-	●	-
Front seat centre armrest	-	-	●	●	○	●
Rear seat centre armrest (five door only)	-	-	●	●	●	●
Steering wheel: Three-spoke leather rim	-	-	-	●	●	●
Storage: Illuminated glove compartment with lockable lid on passenger side	●	●	●	●	●	●
Upholstery: 'Airport' cloth	●	●	-	-	-	-
'Motion' velour	-	-	●	-	-	-
Interwoven velour	-	-	-	●	●	●
Vanity mirrors: Illuminated on driver's and passenger's side	●	●	●	●	●	●
Wood inserts for centre console, front ashtray lid and inside door handles	-	-	-	-	●	● ²

Exterior Equipment and Styling:

Bumpers: Painted in body colour with black bump strip	●	●	●	-	-	-
Painted in body colour with body-coloured bump strip	-	-	-	●	●	●
Green tinted glass	●	●	●	●	●	●
Wheels: 6J x 14 steel including spare with full size wheel trims with 175/80 R14 tyres	●	-	●	-	-	-
6J x 15 steel including spare with full size wheel trims with 195/65 R15 tyres	-	-	● ³	-	-	-
Four 6J x 15 'Avus II' alloys inc. spare steel wheel and anti-theft wheel bolts with 195/65 R15 tyres	○	●	○	●	-	-
Four 6½J x 16 'Montreal II' alloys inc. spare steel wheel and anti-theft wheel bolts with 205/55 R16 tyres	-	-	-	-	●	● ¹
Four 6½J x 16 'Brands Hatch' alloys inc. temp. space-saver spare steel wheel and anti-theft wheel bolts with 205/55 R16 tyres	-	-	-	-	-	● ²

● Standard ○ Optional - Not available

¹ V5 only ² V6 4MOTION only ³ TDI PD models only

Volkswagen service

for your *peace* of mind.

The Volkswagen Warranty.

Three-year Warranty.

All Volkswagen Golfs now come with a three-year/60,000 miles warranty, which protects your car against the failure of most mechanical and electrical components due to manufacturing defects. This comprises a two-year manufacturer's warranty with unlimited mileage plus a further one-year/60,000 miles (whichever is soonest) Retailer Warranty. Should the mileage exceed 60,000 miles within the first two years, the manufacturer's two-year warranty will still be valid. If an additional warranty for subsequent years or higher mileage is desired, it may be purchased from any authorised Volkswagen retailer; however, this additional warranty must be purchased before the mileage reaches 59,999. Cover is subject to the car being serviced and maintained at an authorised Volkswagen retailer according to the manufacturer's recommendations. Full details of the three-year warranty are available from your Volkswagen retailer. This three-year warranty is only available on vehicles purchased in the UK through an authorised Volkswagen retailer.

Three-year Paint Warranty.

The paintwork of the Golf is covered against manufacturing defects for a period of three years. Naturally, the Golf must be cared for in compliance with the operating instructions which will be found in your vehicle handbook. Please consult your Volkswagen retailer for full warranty details.

12-year Body Protection Warranty.

The internal body sections and panels of the Golfs are covered against rusting through from the inside for a period of 12 years. Naturally, the Golf must be cared for in compliance with the operating instructions. Please consult your Volkswagen retailer for full warranty details.

Service Intervals for Petrol and

Diesel Engines.

Volkswagen has always been dedicated to protecting the environment. That's why all Golfs now come with a Variable (LongLife) Service regime. As a result of more flexible service intervals the engine oil requirement can be significantly reduced over the vehicle's total life, which results in less waste oil to dispose of and reduces the burden on the environment.

With the Variable Service regime there is no predetermined time or mileage for a service. Technology fitted to the Golf will determine when a service is required, depending on your driving style, via the Service Interval Display in the instrument panel. This could be between 9,000* and 19,000* miles on petrol engines and even up to 30,000* on some diesel engines or between 12 and 24 months. Please ask your Volkswagen retailer for full details.

If you would like a more traditional service regime, the Golf can be adapted by your Volkswagen retailer, to an Extended (time/distance) Service regime. This can be done at the point of sale or at the time of a service. Please ask your Volkswagen retailer for full details.

* All mileages are approximate.

Approved Accessories.

A comprehensive range of accessories from alloy wheels to carpet mats is available to complement the factory-fitted option list. Volkswagen Approved accessories purchased from and fitted by your Volkswagen retailer at the point of vehicle sale will also benefit from the three-year vehicle warranty.

Volkswagen Insurance.

Competitive insurance premiums are available to Volkswagen owners through Volkswagen Insurance Service (Great Britain) Limited. Volkswagen Insurance guarantee that all repair work is undertaken by an authorised Volkswagen retailer using only genuine parts, thus ensuring that the manufacturer's warranties remain in force. For a quotation, telephone Linkline: 0845 600 8006.

Extended Warranty.

You may purchase additional protection from your retailer or contact 0870 9000 115.

Volkswagen Finance†.

Volkswagen Finance offers a dedicated service to meet the needs of both the business user and the private motorist. We can help you choose the right type of finance and will tailor the package to meet your specific requirements. Please consult your Volkswagen retailer for details.

† Volkswagen Finance is a trading name of Volkswagen Financial Services (UK) Limited.

Volkswagen Assistance.

Every new car is registered for Volkswagen Assistance for one year. This provides vehicle recovery in the unlikely event of a breakdown (subject to conditions). Volkswagen Assistance can also be purchased for subsequent years. For full details, please contact your Volkswagen retailer.

Tax Free Sales.

For full details, please contact your Volkswagen retailer.

CO₂ Emission.

The weight of a vehicle will influence the level of CO₂ emission it produces; as a result, vehicles with higher levels of specification and factory-fitted options may emit higher levels of CO₂.

The CO₂ figure quoted for each vehicle is the maximum possible. The unladen weight of the vehicle is calculated by range at the time of manufacture and the maximum possible CO₂ emission for that weight range is applied according to the Council Directive 80/1268EEC as amended by Commission Directive 1999/100/EC on the approximation of the laws of the member states relating to the carbon dioxide emissions and the fuel consumption of motor vehicles.

Please Note:

Some illustrations in this brochure do not necessarily reflect UK specifications and may not be available. In particular, controls and some items of equipment are positioned differently for the UK.

The specifications contained in this brochure are for information purposes only and are subject to change. If you require any specific feature, you must consult your Volkswagen retailer who is regularly updated with any change in specification. Please check model availability and full specification details with your Volkswagen retailer prior to ordering.

The TDI® is a registered trademark of VOLKSWAGEN AG.

Note:

We would like to advise you that telephone calls to Volkswagen Customer Care may be monitored and recorded as part of our training and quality assurance processes. All our monitoring and recording processes meet Ofcom regulations.

To experience

the Golf for yourself –

contact your local Volkswagen retailer.



Model shown is GTI.