



Aus Liebe zum Automobil

The new Eos





Be at one with the world around you.

Imagine driving open-top through the darkness on a summer evening with the stars above you. Feeling the exhilaration of speed as the wind sweeps over you. Seeing, hearing, smelling the world around you with a fresh intensity. Enjoying the seasons as never before. Being at one with the elements.

Drive the new Volkswagen Eos, and classic coupé combines with sporty cabriolet, giving you the best of both worlds. Never again will you have to choose between them. Never before has driving been such fun.

Model shown is Sport 2.0 T-FSI with optional 'Nappa' leather and metallic paint.

Seize the moment.

Stylish coupé one minute, open-top cabriolet the next – follow your heart and go from windproof luxury to windswept exhilaration at the touch of a button. What better way to experience the world around you in all its glory?

The new Eos. Sensational at sunrise, stunning at sunset – whatever the weather.



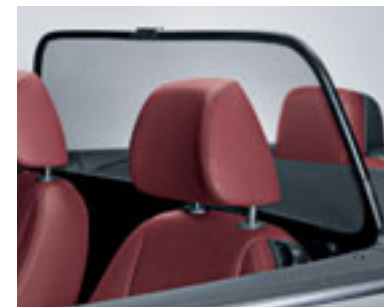
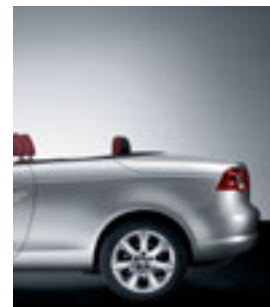
Model shown is Sport 2.0 T-FSI with optional 17" 'Westwood' alloy wheels and metallic paint.

Unique to the new Eos – the large **slide/tilt glass sunroof** is integrated within the fully automatic **CSC roof system** and can be opened separately at any time.

All models shown are Sport 3.2 V6 and feature optional 'Nappa' leather and metallic paint.

From coupé to cabriolet in 25 seconds.

Sunshine or rain, you're ready for both. Thanks to an innovative CSC (Coupé Sunroof Cabriolet) folding steel roof system, you can change from coupé to cabriolet at the touch of a button – enjoying open-top exhilaration or hardtop comfort as the mood takes you. And what's unique about this system is that even with the roof closed, you can open the electric slide/tilt sunroof and fill your lungs with fresh air.



The folding hardtop combines the characteristics of a coupé, sliding glass sunroof and convertible roof, thereby unifying three different car concepts to form a whole. The five-section folding **CSC roof system** can be lowered automatically in just 25 seconds, transforming the hardtop coupé into a sporty cabriolet. Parking sensors with acoustic warning signals and boot lid assistant, help prevent collisions with obstacles to the rear.

An optional **wind deflector** offers protection from air turbulence.

Switches for controlling the automatic **CSC roof system** and **slide/tilt glass sunroof** are located within the centre console.

The **electric slide/tilt glass sunroof** offers an additional source of plentiful fresh air.



Model shown is Sport 3.2 V6 with optional 'Nappa' leather, multifunction steering wheel, radio system RCD 500 and metallic paint.



Sporty yet elegant, the spacious interior of the new Eos exudes first-class build quality down to the smallest detail. Model shown is Sport 3.2 V6 with optional 'Nappa' leather, multifunction steering wheel, radio system RCD 500 and metallic paint. Please note that the multifunction steering wheel features a telephone control button which will not work on UK models.



Leather trim on the handbrake grip, gear knob and three-spoke sports steering wheel gives a high quality feel, blending perfectly with the interior's fine tailoring. Standard on all models except Eos 1.6 FSI. Model shown features optional 'Nappa' leather.



Electric front and rear windows feature a one-touch open and close facility. Additionally, all four windows can be operated with the touch of a single button.

Share the open-top experience with those in the back.

Who says rear passengers shouldn't have as much fun? In the new Eos, four generous seats accommodate four adults with ease, with plenty of legroom for those in the back. And thanks to 'easy entry' front seats that slide forwards automatically, it couldn't be easier for rear passengers to get in and out. Which means, wherever you're sitting, front or back, you can enjoy the unique experience of the new Eos in total style and comfort.



The high level **third brake light with LED technology** is harmoniously integrated into the boot lid.

Drive safely – without a care in the world.

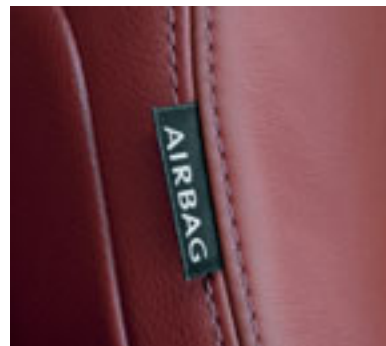
Not only does the new Eos promise fun, excitement and adventure, but also the highest levels of safety and protection. A comprehensive range of intelligent safety features, including an Electronic Stabilisation Programme (ESP) and an Anti-lock Braking System (ABS) with Hydraulic Brake Assist (HBA) and automatic hazard light activation under emergency braking helps control the car in critical situations as well as warning other road users of the situation ahead. In addition, the rigid bodyshell, active rollover bar system, whiplash-optimised (WOKS) front head restraints, driver's and front passenger's airbags with passenger's airbag deactivation switch and combined curtain and side impact airbags offer maximum protection.

We cannot dispense with the laws of physics, but we can do everything possible to ensure your safety – leaving you free to enjoy the ride, without a care in the world. What greater freedom could you ask for?



Active rollover bars behind the rear seats activate at the slightest hint of a roll or impact, providing exceptional protection for passengers.

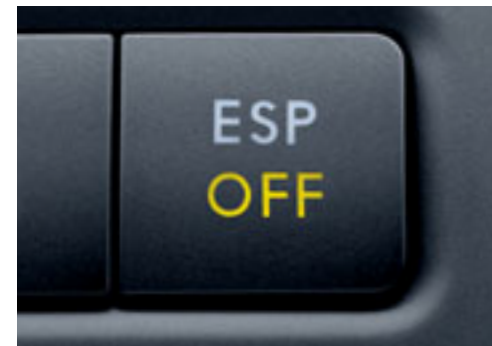
All models shown feature optional 'Nappa' leather and metallic paint.



The airbag system comprises **driver's and front passenger's airbags with passenger's airbag deactivation switch, and combined curtain and side impact airbags.**



An **Anti-lock Braking System (ABS)** helps prevent the wheels from locking when braking severely and is fitted as standard.

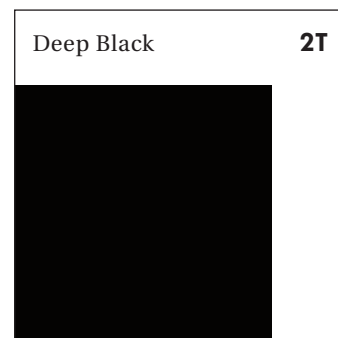
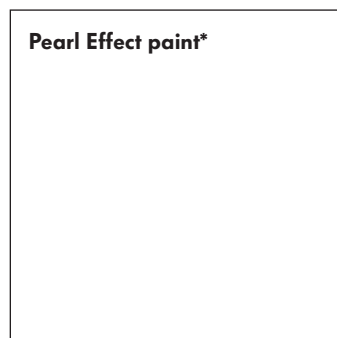
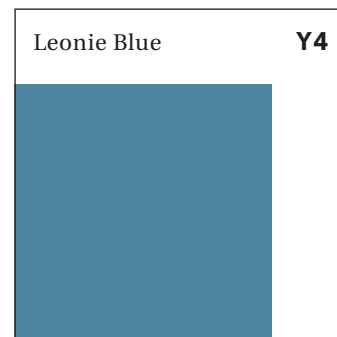
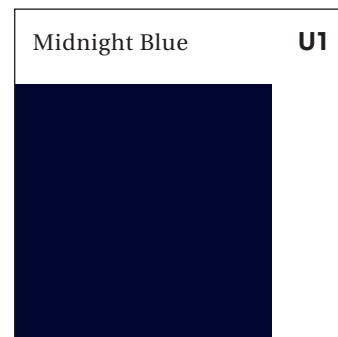
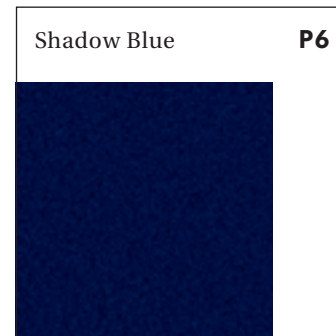
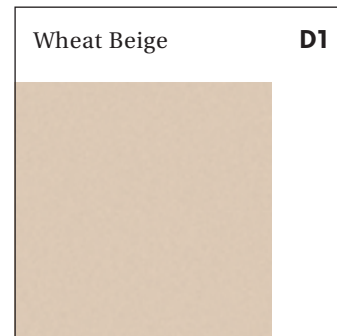
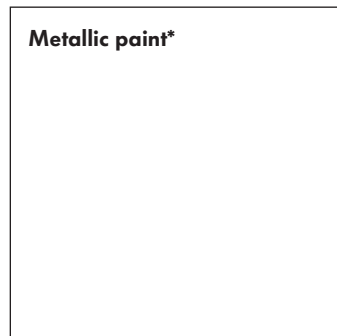
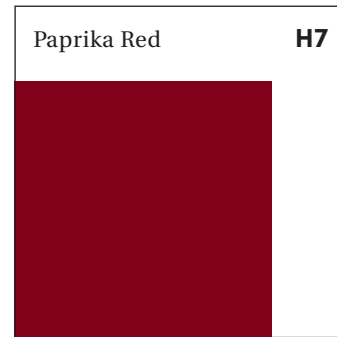
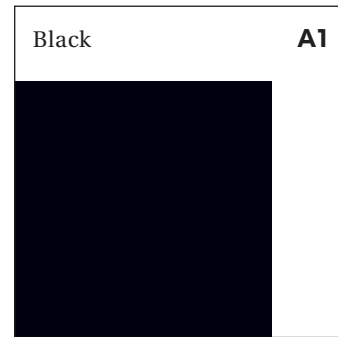
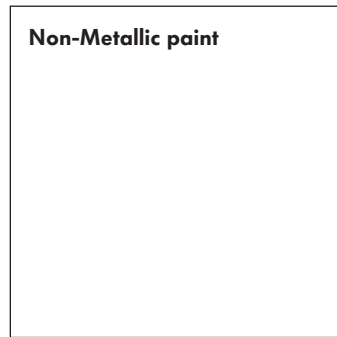


The **Electronic Stabilisation Programme (ESP)** reacts to critical driving situations within milliseconds, helping to maintain control by adjusting the engine's output and controlling the speed of individual wheels.



Front fog lights are neatly mounted in the body-coloured front bumper and help provide clearer vision in bad weather.

Paint.



Please note: Screen technology does not allow for exact reproduction of the paint colours. For further details, please contact your Volkswagen retailer.


* Metallic and pearl effect paint are optional at extra cost.

Upholstery.

'High Spirit' cloth

Standard – Eos, Sport

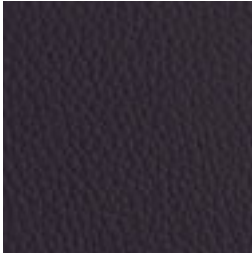
Titanium Black **CA**



'Vienna' leather* sports seats

Standard – Sport 3.2 V6
Optional – Eos, Sport

Titanium Black **TW**




Cornsilk Beige **TY**




'Nappa' leather* sports seats

Optional – Sport, Sport 3.2 V6

Deep Red **VK**



Titanium Black **ZE**



Cornsilk Beige **ZK**



Please note: Screen technology does not allow for exact reproduction of the upholstery colours. For further details, please contact your Volkswagen retailer.

* Leather upholstery is optional at extra cost. Some parts of leather seats will contain artificial leather.

Colour combinations.

	Upholstery	Carpet	Dashboard – top/bottom	Black A1	Paprika Red H7	Silver Essence metallic 5H*	Wheat Beige metallic D1*	Shadow Blue metallic P6*	Midnight Blue metallic U1*	Leonie Blue metallic Y4*	Deep Black pearl effect 2T*	Island Grey pearl effect C9*
‘High Spirit’ cloth Standard – Eos, Sport	Titanium Black (CA)	Titanium Black	Titanium Black/Titanium Black	●	●	●	●	●	●	●	●	●
‘Vienna’ leather sports seats† Standard – Sport 3.2 V6	Titanium Black (TW)	Titanium Black	Titanium Black/Titanium Black	●	●	●	●	●	●	●	●	●
	Cornsilk Beige (TY)	Dark Cornsilk	Titanium Black/Cornsilk Beige	●	●	●	●	●	●	●	●	●
‘Vienna’ leather sports seats*† Optional – Eos, Sport	Titanium Black (TW)	Titanium Black	Titanium Black/Titanium Black	○	○	○	○	○	○	○	○	○
	Cornsilk Beige (TY)	Dark Cornsilk	Titanium Black/Cornsilk Beige	○	○	○	○	○	○	○	○	○
‘Nappa’ leather sports seats*† Optional – Sport, Sport 3.2 V6	Deep Red (VK)	Titanium Black	Titanium Black/Titanium Black	○	–	○	○	–	–	–	○	○
	Titanium Black (ZE)	Titanium Black	Titanium Black/Titanium Black	○	○	○	○	○	○	○	○	○
	Cornsilk Beige (ZK)	Dark Cornsilk	Titanium Black/Cornsilk Beige	○	○	○	○	○	○	○	○	○

* Metallic and pearl effect paints and leather upholstery are optional at extra cost.
† Some parts of leather seats will contain artificial leather.

● Standard ○ Optional – Not available



Interior shown is Eos 2.0 FSI 150 PS with 'High Spirit' cloth upholstery with optional radio system RCD 500 and metallic paint.

An irresistible invitation.

This is a car that doesn't just look good, it feels good too – as you'll discover when you slip into the driving seat. Being a Volkswagen, the ergonomics and build quality speak for themselves – everything is exactly where you'd expect it to be, close at hand and immediately to view, creating a quality interior in which you'll feel immediately at home. A host of refinements include handy storage compartments in the doors, remote unlocking of the boot and fuel flap, a lockable glove compartment with cooling feature, and a lockable load-through provision on the back seat enabling you to transport longer items without affecting passengers. In short, this is a car as individual as it is irresistible.

Equally irresistible is the extensive range of options to further personalise your new Eos. Sumptuous leather upholstery or stylish alloy wheels can create an individual look, while the Winter pack and Luxury pack provide everything you need for comfort and driving enjoyment.



Optional 'Nappa' leather includes heated front sports seats that provide optimum lateral support on tight bends, ensuring maximum driving fun, while fully adjustable height and lumbar support ensures the best possible seating position.



Optional front seats with electric 12-way adjustment include lumbar support and electrically operated 'easy entry' sliding seats. Optional on all models except Eos 1.6 FSI.



The optional DVD navigation/radio system includes either a six CD autochanger, or iPod preparation or USB port in the front centre armrest. A 6½" colour screen displays a map of your route, and combined with audible instructions, it can guide you to your destination in any one of 24 European countries.



iPod preparation or USB port – by Individual, mounted in the front centre armrest allows you to link your iPod or MP3 player to the vehicle's audio system via either USB port or iPod preparation, depending on the device. Controls are then provided through the radio keypad or optional multifunction steering wheel.



Optional cruise control can maintain a constant speed from 20 mph upwards and automatically switches off when the brake or clutch is engaged.



The optional radio system RCD 500, including dash-mounted six CD autochanger, provides hours of listening pleasure.



The radio system RCD 500 'Dynaudio' Soundpack option provides exceptional sound quality, delivering a total output of 600 watts from ten speakers.

Please note: The DVD navigation/radio system and radio RCD 500 system cannot be specified in conjunction with each other.

Designed to inspire.

'Adelaide' 7J x 16 alloy wheels with 215/55 R16 tyres and anti-theft wheel bolts. Standard on Eos 1.6 FSI, 2.0 FSI and 2.0 TDI.



'Solitude' 7½J x 17 alloy wheels with 235/45 R17 tyres and anti-theft wheel bolts. Standard on Sport.



'Le Mans' 7½J x 17 alloy wheels with 235/45 R17 tyres and anti-theft wheel bolts. Optional on Eos 1.6 FSI, 2.0 FSI and 2.0 TDI.



'Westwood' 7½J x 17 alloy wheels with 235/45 R17 tyres and anti-theft wheel bolts. Standard on Sport 3.2 V6 and optional on Sport.



'Avignon' by Individual 7½J x 17 with titanium silver finish, 235/45 R17 tyres and anti-theft wheel bolts. Optional on Sport and Sport 3.2 V6.



'Chicago' by Individual 8J x 18 with 235/40 R18 tyres and anti-theft wheel bolts, including sports suspension (not lowered). Optional on Sport and Sport 3.2 V6.



Model shown is Eos 2.0 FSI 150 PS with optional 'Vienna' leather, Multipack 1 (Bi-Xenon headlights and Luxury pack) and metallic paint.

As spine-tingling as you like.

It's up to you to decide just how exhilarating you'd like your new Eos to be – with a choice of engines to meet the most demanding driver. For a start, three petrol engines deliver an impressive 115 PS, 150 PS or 200 PS, using innovative FSI direct injection technology to produce dynamic power combined with economical fuel consumption*. The 2.0 litre TDI diesel engine offers equal smoothness, pulling power and economy, generating a healthy 140 PS. These engines are all linked to a six speed manual gearbox for added performance. Additionally, the 2.0 litre T-FSI 200 PS and 2.0 litre TDI 140 PS are available with an automatic DSG gearbox.

If you're looking for a drive that's nothing short of exceptional, the powerful 3.2 litre V6 FSI petrol engine delivers a truly amazing 250 PS, 330 Nm of torque at 2,750 rpm, and uses a DSG double clutch transmission for spine-tingling acceleration.

Whichever engine you select, you can be sure that the pleasure will be all yours.

* See the Engines section for CO₂ emissions and fuel consumption figures.



The slick six speed manual gearbox transmits power through precisely defined short shift action.



The 2.0 litre turbocharged FSI engine delivers an amazing 200 PS.

Eos – 1.6 litre FSI 115 PS.

Technical specification.

		Manual	
Engine	Engine type	Four cylinder petrol	
	Cubic capacity, ltrs/cc	1.6/1598	
	Bore/stroke, mm	76.5/86.9	
	Max. output, PS ⁽⁰¹⁾ /kW at rpm	115/85 6000	
	Max. torque, lbs.ft/Nm at rpm	114/155 4000	
	Compression ratio	12.0 : 1	
	Gearbox	Six speed manual	
	Alternator, A	140	
	Battery, A (Ah)	280 (60)	
Weights, kgs	Unladen weight ⁽⁰²⁾	1578	
	Gross vehicle weight	1930	
	Payload ⁽⁰²⁾	352	
	Axle load limit: Front Rear	990 970	
Trailer load limits, kgs⁽⁰³⁾	Braked 12% incline	1500	
	Unbraked	750	
	Towbar load limit	75	
Performance	Top speed†, mph (km/h)	119 (192)	
	Acceleration, secs 0 - 62 mph	11.9	
	ABI insurance group	8	
Environmental information	Fuel grade, minimum	Unleaded, 95 RON ⁽⁰⁴⁾	
	Fuel tank capacity, galls/ltrs	12.1/55	
	Official fuel consumption, mpg/ltr per 100 km ⁽⁰⁶⁾		
	Urban	27.7/10.2	
	Extra-urban	44.8/6.3	
	Combined	36.7/7.7	
	Official CO ₂ emission, g/km ⁽⁰⁷⁾	181	
Emission class	EURO 4		
Noise, dB	TBA		

† Where the law permits.

Please note that only the 2.0 FSI 150 PS, 2.0 T-FSI 200 PS and 2.0 TDI 140 PS are currently available to order. The 1.6 FSI 115 PS will be available to order during April and the 3.2 V6 FSI and all DSG models will be available to order during summer 2006. Please consult your Volkswagen retailer for anticipated delivery times on your chosen model.

Notes.

- 01) The maximum power output figures are quoted in PS (or Pferdestärke, which is the metric equivalent of horsepower). To convert from metric to imperial horsepower, divide the PS figure by 1.0139.
- 02) Figures are calculated in accordance with manufacturer's criteria. Vehicle unladen weight ranges with 90% tank capacity without driver. The individual unladen weight depends on the specification of the vehicle, this then reduces the possible payload accordingly.
- 03) With increasing altitude the engine performance diminishes. From 1,000 m above sea level and for every 1,000 m thereafter 10% of the vehicle/trailer weight (trailer weight + gross vehicle weight) must be deducted.
- 04) Thanks to the knock control, unleaded four star (at least 95 RON) can be used instead of unleaded Super plus. In order to achieve maximum fuel consumption benefits on the FSI engine, Ultra Low Sulphur Petrol (ULSP) must be used.
- 05) The use of RME and FAME (bio diesel) is not possible.
- 06) Official fuel consumption according to EU Directive 99/94. The consumption calculation according to 1999/100/EC is based on the actual unladen weight of the vehicle. Additional specifications can lead to a higher weight class and hence to consumption figures of this higher weight class. The driving style, road and traffic conditions, environmental influences and vehicle condition can in practice lead to consumption figures, which may differ from those calculated with this standard.
- 07) The weight of a vehicle will influence the level of CO₂ emission it produces; as a result, vehicles with higher levels of specification and factory-fitted options may emit higher levels of CO₂. The CO₂ figure quoted for each vehicle is the maximum possible. The unladen weight of the vehicle is calculated by range at the time of manufacture and the maximum possible CO₂ emission for that weight range is applied according to the Council Directive 80/1268EEC as amended by Commission Directive 1999/100/EC on the approximation of the laws of the member states relating to the carbon dioxide emissions and the fuel consumption of motor vehicles.

Eos, Sport – 2.0 litre FSI 150 PS.

Technical specification.

		Manual	
Engine	Engine type	Four cylinder petrol	
	Cubic capacity, ltrs/cc	2.0/1984	
	Bore/stroke, mm	82.5/92.8	
	Max. output, PS ⁽⁰¹⁾ /kW at rpm	150/110 6000	
	Max. torque, lbs.ft/Nm at rpm	148/200 3500	
	Compression ratio	11.5 : 1	
	Gearbox	Six speed manual	
	Alternator, A	140	
	Battery, A (Ah)	280 (60)	
Weights, kgs	Unladen weight ⁽⁰²⁾	1590	
	Gross vehicle weight	1950	
	Payload ⁽⁰²⁾	360	
	Axle load limit: Front Rear	1020 960	
Trailer load limits, kgs ⁽⁰³⁾	Braked 12% incline	1500	
	Unbraked	750	
	Towbar load limit	75	
Performance	Top speed†, mph (km/h)	130 (210)	
	Acceleration, secs 0 - 62 mph	9.8	
	ABI insurance group	12	
Environmental information	Fuel grade, minimum	Unleaded, 95 RON ⁽⁰⁴⁾	
	Fuel tank capacity, galls/ltrs	12.1/55	
	Official fuel consumption, mpg/ltr per 100 km ⁽⁰⁶⁾		
	Urban	24.8/11.4	
	Extra-urban	43.5/6.5	
	Combined	34.0/8.3	
	Official CO ₂ emission, g/km ⁽⁰⁷⁾	199	
Emission class	EURO 4		
Noise, dB	72.0		

† Where the law permits.

Please note that only the 2.0 FSI 150 PS, 2.0 T-FSI 200 PS and 2.0 TDI 140 PS are currently available to order. The 1.6 FSI 115 PS will be available to order during April and the 3.2 V6 FSI and all DSG models will be available to order during summer 2006. Please consult your Volkswagen retailer for anticipated delivery times on your chosen model.

Notes.

- 01) The maximum power output figures are quoted in PS (or Pferdestärke, which is the metric equivalent of horsepower). To convert from metric to imperial horsepower, divide the PS figure by 1.0139.
- 02) Figures are calculated in accordance with manufacturer's criteria. Vehicle unladen weight ranges with 90% tank capacity without driver. The individual unladen weight depends on the specification of the vehicle, this then reduces the possible payload accordingly.
- 03) With increasing altitude the engine performance diminishes. From 1,000 m above sea level and for every 1,000 m thereafter 10% of the vehicle/trailer weight (trailer weight + gross vehicle weight) must be deducted.
- 04) Thanks to the knock control, unleaded four star (at least 95 RON) can be used instead of unleaded Super plus. In order to achieve maximum fuel consumption benefits on the FSI engine, Ultra Low Sulphur Petrol (ULSP) must be used.
- 05) The use of RME and FAME (bio diesel) is not possible.
- 06) Official fuel consumption according to EU Directive 99/94. The consumption calculation according to 1999/100/EC is based on the actual unladen weight of the vehicle. Additional specifications can lead to a higher weight class and hence to consumption figures of this higher weight class. The driving style, road and traffic conditions, environmental influences and vehicle condition can in practice lead to consumption figures, which may differ from those calculated with this standard.
- 07) The weight of a vehicle will influence the level of CO₂ emission it produces; as a result, vehicles with higher levels of specification and factory-fitted options may emit higher levels of CO₂. The CO₂ figure quoted for each vehicle is the maximum possible. The unladen weight of the vehicle is calculated by range at the time of manufacture and the maximum possible CO₂ emission for that weight range is applied according to the Council Directive 80/1268EEC as amended by Commission Directive 1999/100/EC on the approximation of the laws of the member states relating to the carbon dioxide emissions and the fuel consumption of motor vehicles.

Sport – 2.0 litre T-FSI 200 PS. Technical specification.

		Manual	Automatic
Engine	Engine type	Four cylinder petrol	Four cylinder petrol
	Cubic capacity, ltrs/cc	2.0/1984	2.0/1984
	Bore/stroke, mm	82.5/92.8	82.5/92.8
	Max. output, PS ⁽⁰¹⁾ /kW at rpm	200/147 5100-6000	200/147 5100-6000
	Max. torque, lbs.ft/Nm at rpm	207/280 1800-5000	207/280 1800-5000
	Compression ratio	10.3 : 1	10.3 : 1
	Gearbox	Six speed manual	Six speed auto DSG
	Alternator, A	140	TBA
	Battery, A (Ah)	280 (60)	TBA
Weights, kgs	Unladen weight ⁽⁰²⁾	1645	TBA
	Gross vehicle weight	2000	TBA
	Payload ⁽⁰²⁾	355	TBA
	Axle load limit: Front Rear	1070 960	TBA TBA
Trailer load limits, kgs⁽⁰³⁾	Braked 12% incline	1500	TBA
	Unbraked	750	750
	Towbar load limit	75	75
Performance	Top speed†, mph (km/h)	144 (232)	TBA
	Acceleration, secs 0 - 62 mph	7.8	TBA
	ABI insurance group	15	15
Environmental information	Fuel grade, minimum	Unleaded, 95 RON ⁽⁰⁴⁾	Unleaded, 95 RON ⁽⁰⁴⁾
	Fuel tank capacity, galls/ltrs	12.1/55	12.1/55
	Official fuel consumption, mpg/ltr per 100 km ⁽⁰⁶⁾		
	Urban	24.8/11.4	TBA
	Extra-urban	42.8/6.6	TBA
	Combined	33.6/8.4	TBA
	Official CO ₂ emission, g/km ⁽⁰⁷⁾	202	TBA
	Emission class	EURO 4	EURO 4
Noise, dB	72.0	TBA	

† Where the law permits.

Please note that only the 2.0 FSI 150 PS, 2.0 T-FSI 200 PS and 2.0 TDI 140 PS are currently available to order. The 1.6 FSI 115 PS will be available to order during April and the 3.2 V6 FSI and all DSG models will be available to order during summer 2006. Please consult your Volkswagen retailer for anticipated delivery times on your chosen model.

Notes.

- 01) The maximum power output figures are quoted in PS (or Pferdestärke, which is the metric equivalent of horsepower). To convert from metric to imperial horsepower, divide the PS figure by 1.0139.
- 02) Figures are calculated in accordance with manufacturer's criteria. Vehicle unladen weight ranges with 90% tank capacity without driver. The individual unladen weight depends on the specification of the vehicle, this then reduces the possible payload accordingly.
- 03) With increasing altitude the engine performance diminishes. From 1,000 m above sea level and for every 1,000 m thereafter 10% of the vehicle/trailer weight (trailer weight + gross vehicle weight) must be deducted.
- 04) Thanks to the knock control, unleaded four star (at least 95 RON) can be used instead of unleaded Super plus. In order to achieve maximum fuel consumption benefits on the FSI engine, Ultra Low Sulphur Petrol (ULSP) must be used.
- 05) The use of RME and FAME (bio diesel) is not possible.
- 06) Official fuel consumption according to EU Directive 99/94. The consumption calculation according to 1999/100/EC is based on the actual unladen weight of the vehicle. Additional specifications can lead to a higher weight class and hence to consumption figures of this higher weight class. The driving style, road and traffic conditions, environmental influences and vehicle condition can in practice lead to consumption figures, which may differ from those calculated with this standard.
- 07) The weight of a vehicle will influence the level of CO₂ emission it produces; as a result, vehicles with higher levels of specification and factory-fitted options may emit higher levels of CO₂. The CO₂ figure quoted for each vehicle is the maximum possible. The unladen weight of the vehicle is calculated by range at the time of manufacture and the maximum possible CO₂ emission for that weight range is applied according to the Council Directive 80/1268EEC as amended by Commission Directive 1999/100/EC on the approximation of the laws of the member states relating to the carbon dioxide emissions and the fuel consumption of motor vehicles.

Sport 3.2 V6 – 3.2 litre V6 FSI 250 PS.

Technical specification.

		Automatic	
Engine	Engine type	Six cylinder petrol	
	Cubic capacity, ltrs/cc	3.2/3189	
	Bore/stroke, mm	84.0/95.9	
	Max. output, PS ⁽⁰¹⁾ /kW at rpm	250/184 6250	
	Max. torque, lbs.ft/Nm at rpm	244/330 2750-3750	
	Compression ratio	10.9 : 1	
	Gearbox	Six speed auto DSG	
	Alternator, A	140	
	Battery, A (Ah)	380 (50)	
Weights, kgs	Unladen weight ⁽⁰²⁾	1713	
	Gross vehicle weight	2090	
	Payload ⁽⁰²⁾	377	
	Axle load limit: Front Rear	1110 1000	
Trailer load limits, kgs ⁽⁰³⁾	Braked 12% incline	1500	
	Unbraked	750	
	Towbar load limit	75	
Performance	Top speed†, mph (km/h)	154 (248)	
	Acceleration, secs 0 - 62 mph	7.3	
	ABI insurance group	17	
Environmental information	Fuel grade, minimum	Unleaded, 95 RON ⁽⁰⁴⁾	
	Fuel tank capacity, galls/ltrs	12.1/55	
	Official fuel consumption, mpg/ltr per 100 km ⁽⁰⁶⁾		
	Urban	TBA	
	Extra-urban	TBA	
	Combined	TBA	
	Official CO ₂ emission, g/km ⁽⁰⁷⁾	TBA	
Emission class	EURO 4		
Noise, dB	TBA		

† Where the law permits.

Please note that only the 2.0 FSI 150 PS, 2.0 T-FSI 200 PS and 2.0 TDI 140 PS are currently available to order. The 1.6 FSI 115 PS will be available to order during April and the 3.2 V6 FSI and all DSG models will be available to order during summer 2006. Please consult your Volkswagen retailer for anticipated delivery times on your chosen model.

Notes.

- 01) The maximum power output figures are quoted in PS (or Pferdestärke, which is the metric equivalent of horsepower). To convert from metric to imperial horsepower, divide the PS figure by 1.0139.
- 02) Figures are calculated in accordance with manufacturer's criteria. Vehicle unladen weight ranges with 90% tank capacity without driver. The individual unladen weight depends on the specification of the vehicle, this then reduces the possible payload accordingly.
- 03) With increasing altitude the engine performance diminishes. From 1,000 m above sea level and for every 1,000 m thereafter 10% of the vehicle/trailer weight (trailer weight + gross vehicle weight) must be deducted.
- 04) Thanks to the knock control, unleaded four star (at least 95 RON) can be used instead of unleaded Super plus. In order to achieve maximum fuel consumption benefits on the FSI engine, Ultra Low Sulphur Petrol (ULSP) must be used.
- 05) The use of RME and FAME (bio diesel) is not possible.
- 06) Official fuel consumption according to EU Directive 99/94. The consumption calculation according to 1999/100/EC is based on the actual unladen weight of the vehicle. Additional specifications can lead to a higher weight class and hence to consumption figures of this higher weight class. The driving style, road and traffic conditions, environmental influences and vehicle condition can in practice lead to consumption figures, which may differ from those calculated with this standard.
- 07) The weight of a vehicle will influence the level of CO₂ emission it produces; as a result, vehicles with higher levels of specification and factory-fitted options may emit higher levels of CO₂. The CO₂ figure quoted for each vehicle is the maximum possible. The unladen weight of the vehicle is calculated by range at the time of manufacture and the maximum possible CO₂ emission for that weight range is applied according to the Council Directive 80/1268EEC as amended by Commission Directive 1999/100/EC on the approximation of the laws of the member states relating to the carbon dioxide emissions and the fuel consumption of motor vehicles.

Eos, Sport – 2.0 litre TDI 140 PS.

Technical specification.

		Manual	Automatic
Engine	Engine type	Four cylinder diesel	Four cylinder diesel
	Cubic capacity, ltrs/cc	2.0/1968	2.0/1968
	Bore/stroke, mm	81.0/95.5	81.0/95.5
	Max. output, PS ⁽⁰¹⁾ /kW at rpm	140/103 4000	140/103 4000
	Max. torque, lbs.ft/Nm at rpm	236/320 1800-2500	236/320 1800-2500
	Compression ratio	18.0 : 1	18.0 : 1
	Gearbox	Six speed manual	Six speed auto DSG
	Alternator, A	140	TBA
	Battery, A (Ah)	330 (61)	TBA
Weights, kgs	Unladen weight ⁽⁰²⁾	1655	TBA
	Gross vehicle weight	2010	TBA
	Payload ⁽⁰²⁾	355	TBA
	Axle load limit: Front Rear	1070 970	TBA TBA
Trailer load limits, kgs ⁽⁰³⁾	Braked 12% incline	1300	TBA
	Unbraked	750	750
	Towbar load limit	75	75
Performance	Top speed†, mph (km/h)	126 (205)	TBA
	Acceleration, secs 0 - 62 mph	10.4	TBA
	ABI insurance group	11	11
Environmental information	Fuel grade, minimum	Diesel ⁽⁰⁵⁾	Diesel ⁽⁰⁵⁾
	Fuel tank capacity, galls/ltrs	12.1/55	12.1/55
	Official fuel consumption, mpg/ltr per 100 km ⁽⁰⁶⁾		
	Urban	35.3/8.0	TBA
	Extra-urban	56.5/5.0	TBA
	Combined	47.1/6.0	TBA
	Official CO ₂ emission, g/km ⁽⁰⁷⁾	158	TBA
	Emission class	EURO 4	EURO 4
Noise, dB	72.0	TBA	

† Where the law permits.

Please note that only the 2.0 FSI 150 PS, 2.0 T-FSI 200 PS and 2.0 TDI 140 PS are currently available to order. The 1.6 FSI 115 PS will be available to order during April and the 3.2 V6 FSI and all DSG models will be available to order during summer 2006. Please consult your Volkswagen retailer for anticipated delivery times on your chosen model.

Notes.

- 01) The maximum power output figures are quoted in PS (or Pferdestärke, which is the metric equivalent of horsepower). To convert from metric to imperial horsepower, divide the PS figure by 1.0139.
- 02) Figures are calculated in accordance with manufacturer's criteria. Vehicle unladen weight ranges with 90% tank capacity without driver. The individual unladen weight depends on the specification of the vehicle, this then reduces the possible payload accordingly.
- 03) With increasing altitude the engine performance diminishes. From 1,000 m above sea level and for every 1,000 m thereafter 10% of the vehicle/trailer weight (trailer weight + gross vehicle weight) must be deducted.
- 04) Thanks to the knock control, unleaded four star (at least 95 RON) can be used instead of unleaded Super plus. In order to achieve maximum fuel consumption benefits on the FSI engine, Ultra Low Sulphur Petrol (ULSP) must be used.
- 05) The use of RME and FAME (bio diesel) is not possible.
- 06) Official fuel consumption according to EU Directive 99/94. The consumption calculation according to 1999/100/EC is based on the actual unladen weight of the vehicle. Additional specifications can lead to a higher weight class and hence to consumption figures of this higher weight class. The driving style, road and traffic conditions, environmental influences and vehicle condition can in practice lead to consumption figures, which may differ from those calculated with this standard.
- 07) The weight of a vehicle will influence the level of CO₂ emission it produces; as a result, vehicles with higher levels of specification and factory-fitted options may emit higher levels of CO₂. The CO₂ figure quoted for each vehicle is the maximum possible. The unladen weight of the vehicle is calculated by range at the time of manufacture and the maximum possible CO₂ emission for that weight range is applied according to the Council Directive 80/1268EEC as amended by Commission Directive 1999/100/EC on the approximation of the laws of the member states relating to the carbon dioxide emissions and the fuel consumption of motor vehicles.

The technology.

Transmission

- Six speed manual: 1.6 litre FSI 115 PS, 2.0 litre FSI 150 PS, 2.0 litre T-FSI 200 PS, 2.0 litre TDI 140 PS
- Six speed automatic DSG: 2.0 litre T-FSI 200 PS, 3.2 litre V6 FSI 250 PS, 2.0 litre TDI 140 PS

Brakes

- Electronically controlled Anti-lock Braking System (ABS) with Electronic Brake-pressure Distribution (EBD)
- Hydraulic Brake Assist (HBA)

Steering

- TBA

Running gear

- Electronic Stabilisation Programme (ESP) including Electronic Differential Lock (EDL) and Traction Control (ASR)

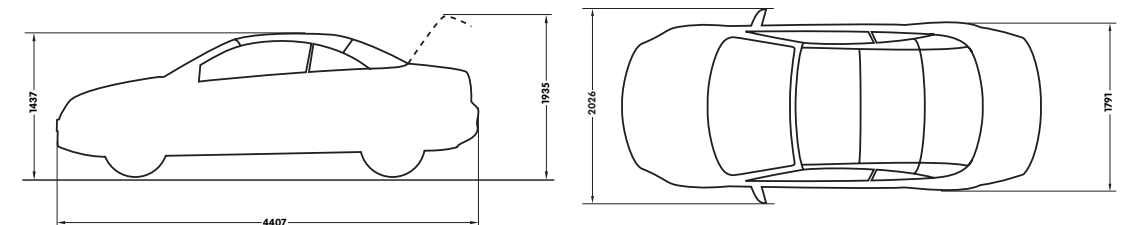
Engines

- Front transverse-installed engine
- 1.6 litre/115 PS ⁽⁰¹⁾ (85 kW) petrol engine: four cylinder in-line engine, aluminium cylinder head, four valves per cylinder with roller valve lever drive, electronic direct injection (FSI), programmed ignition with cylinder-selective anti-knock control, four single spark ignition coils, longlife spark plugs, exhaust gas recirculation, three-way front catalyst, NOx storage catalyst
- 2.0 litre/150 PS ⁽⁰¹⁾ (110 kW) petrol engine: four cylinder in-line engine, aluminium cylinder head, four valves per cylinder with roller valve lever drive, electronic direct injection (FSI), programmed ignition with cylinder-selective anti-knock control, four single spark ignition coils, longlife spark plugs, exhaust gas recirculation, three-way front catalyst, NOx storage catalyst
- 2.0 litre/200 PS ⁽⁰¹⁾ (147 kW) petrol engine: four cylinder in-line engine, aluminium cylinder head, four valves per cylinder with roller rocker finger valve drive, electronic direct injection (FSI), variable inlet valve timing, programmed ignition with cylinder-selective anti-knock control, four single spark ignition coils, longlife spark plugs, exhaust gas turbocharger, three-way close-coupled pre-catalyst and underbody catalyst, lambda control
- 3.2 litre/250 PS ⁽⁰¹⁾ (184 kW) petrol engine: six cylinder transverse engine in 'V' format, aluminium cylinder head, four valves per cylinder with roller rocker valve lever drive, electronic indirect injection, distributorless electronic ignition, three-way catalyst, lambda control
- 2.0 litre/140 PS ⁽⁰¹⁾ (103 kW) diesel engine: four cylinder in-line engine, four valves per cylinder, electronically controlled 'Pumpe Düse' high pressure injection system, oil cooler, intercooler, exhaust gas recirculation, oxidation catalyst, turbocharger with variable turbine geometry

Technical specification dimensions.

Maximum luggage capacity, litres VDA measuring method using 200 x 100 x 50 mm blocks	As coupé (3.2 V6 FSI)	380 (358)
	As cabriolet (3.2 V6 FSI)	205 (183)
Exterior dimensions	Length, mm	4407
	Width – including door mirrors, mm	2026
	Width – excluding door mirrors, mm	1791
	Width – opened front doors, mm	4153
	Height, mm	1437
	Height – opened bonnet/floor, mm	1769
	Height – opened tailgate/floor, mm	1935
	Wheelbase, mm	2578
	Turning circle, metres	10.9

01 The maximum power output figures are quoted in PS (or Pferdestärke, which is the metric equivalent of horsepower). To convert from metric to imperial horsepower, divide the PS figure by 1.0139.



Volkswagen service for your peace of mind.

The Volkswagen Warranty.

Three-year Warranty.

All Volkswagen new Eos' come with a three-year/60,000 miles warranty, which protects your car against the failure of most mechanical and electrical components due to manufacturing defects. This comprises a two-year manufacturer's warranty with unlimited mileage plus a further one-year/60,000 miles (whichever is soonest) Retailer Warranty. Should the mileage exceed 60,000 miles within the first two years, the manufacturer's two-year warranty will still be valid. If an additional warranty for subsequent years or higher mileage is desired, it may be purchased from an authorised Volkswagen retailer or repairer; however, this additional warranty must be purchased before the mileage reaches 60,000. Full details of the three-year warranty are available from your authorised Volkswagen retailer or repairer.

Three-year Paint Warranty.

The paintwork of the new Eos is covered against manufacturing defects for a period of three years. Naturally, the new Eos must be cared for in compliance with the operating instructions which will be found in your vehicle handbook. Please consult your authorised Volkswagen retailer or repairer for full warranty details.

12-year Body Protection Warranty.

The internal body sections and panels of the new Eos' are covered against rusting through from the inside for 12 years. Naturally, the new Eos must be cared for in compliance with the operating instructions. Please consult your authorised Volkswagen retailer or repairer for full warranty details.

Service Intervals.

Volkswagen are pleased to offer you a choice on how your new Eos is serviced. The appropriate selection is entirely dependent on how the car is likely to be driven and its general use. To help you identify which type of service would be most suitable, please refer to the following guide.

The Time and Distance Service is recommended for vehicles that will cover less than 10,000 miles in 12 months and if the vehicle is likely to be used in the following way:

- Predominantly urban driving, short journeys with frequent cold starts.
- Activities regularly producing high engine loading, e.g. frequent hill climbs, driving with vehicle fully loaded and towing.
- Uneconomical driving style using high rpms with heavy acceleration and heavy braking.

The service intervals for the Time and Distance Service are as follows:

- Oil change service
Every 10,000 miles/1 year (whichever is soonest).
- Interval service
Every 20,000 miles/2 years (whichever is soonest).
- Interval service inspection
Every 40,000 miles/4 years (whichever is soonest).

The LongLife Service is recommended for vehicles with a daily mileage of more than 25 miles where the vehicle is driven regularly mainly on longer distance journeys. The vehicle is driven mainly at a constant speed with minimum vehicle and engine loading, minimal towing and driven in an economical manner.

With the LongLife Service the vehicle can cover anywhere between 10,000* and a maximum of 20,000* miles or 24 months (whichever is soonest).

* Please note that mileages are approximate as the service indicator system uses kilometres as the distance measurement. Please consult your authorised Volkswagen retailer or repairer for advice and full details.

Approved Accessories.

A comprehensive range of accessories from alloy wheels to carpet mats is available to complement the factory-fitted option list. Volkswagen approved accessories purchased from and fitted by your authorised Volkswagen retailer at the point of vehicle sale will also benefit from the three-year vehicle warranty.

Volkswagen Insurance.

Competitive insurance premiums are available to Volkswagen owners through Volkswagen Insurance Service (Great Britain) Limited. Volkswagen Insurance guarantees that all repair work is undertaken by an authorised Volkswagen retailer or repairer. For a quotation, telephone Linkline on 0845 600 8006.

Extended Warranty.

You may purchase additional protection from your authorised Volkswagen retailer or repairer, or contact 0870 9000 115.

Volkswagen Finance†.

Volkswagen Finance specialises in providing funding solutions for Volkswagen drivers. Whether your Volkswagen is for private or business use, you can choose from a range of funding options.

- Solutions – a personal contract plan
- Hire purchase
- Lease purchase
- Finance lease
- Contract hire

With all Volkswagen Finance products you can choose a fixed-cost maintenance plan to help you budget for your servicing and maintenance costs.

No matter what finance product you choose, your local Volkswagen retailer will be able to provide you with a personalised quote that could meet your budget and vehicle needs.

Volkswagen Assistance.

Every new car is registered for Volkswagen Assistance for one year. This provides vehicle recovery in the unlikely event of a breakdown (subject to conditions). Volkswagen Assistance can also be purchased for subsequent years. For full details, please contact your authorised Volkswagen retailer.

Tax Free Sales.

For full details, please contact your authorised Volkswagen retailer.

CO₂ Emission.

The weight of a vehicle will influence the level of CO₂ emission it produces; as a result, vehicles with higher levels of specification and factory-fitted options may emit higher levels of CO₂.

The CO₂ figure quoted for each vehicle is the maximum possible. The unladen weight of the vehicle is calculated by range at the time of manufacture and the maximum possible CO₂ emission for that weight range is applied according to the Council Directive 80/1268EEC as amended by Commission Directive 1999/100/EC on the approximation of the laws of the member states relating to the carbon dioxide emissions and the fuel consumption of motor vehicles.

Please Note:

Some illustrations in this brochure do not necessarily reflect UK specifications and may not be available. In particular, controls and some items of equipment are positioned differently for the UK.

The specifications contained in this brochure are for information purposes only and are subject to change. If you require any specific feature, you must consult your authorised Volkswagen retailer who is regularly updated with any change in specification. Please check model availability and full specification details with your authorised Volkswagen retailer prior to ordering.

Note: We would like to advise you that telephone calls to Volkswagen Customer Care may be monitored and recorded as part of our training and quality assurance processes. All our monitoring and recording processes meet Ofcom regulations.

† Volkswagen Finance is a trading name of Volkswagen Financial Services (UK) Limited. An offer of finance depends on certain conditions. Available to people over 18 in the UK only.