



Volkswagen

The California

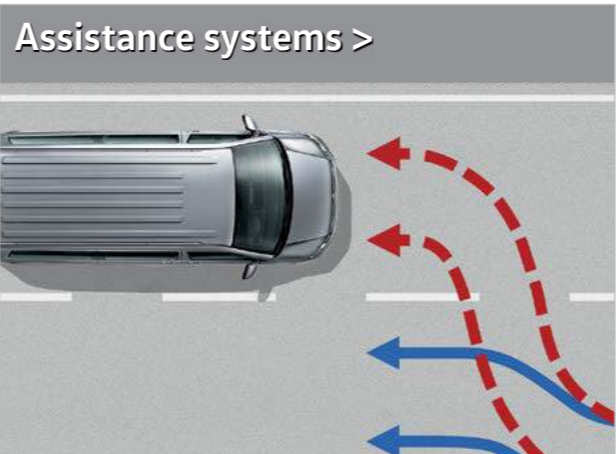
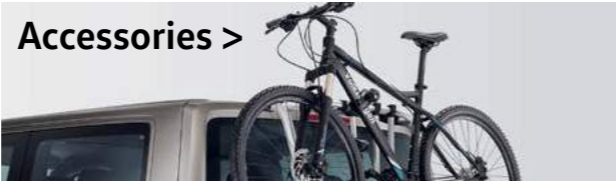
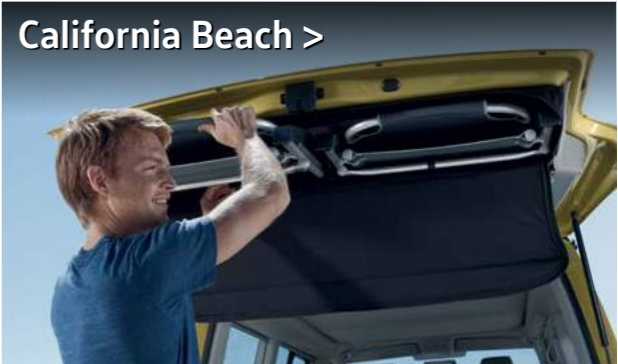


60 years in the making.

With the sixth generation Volkswagen California, there's no better way to add to the success story of a legend. What began some 60 years ago with the original Volkswagen camper van being seen as a rolling symbol of independence and freedom, has become a true home from home on four wheels. Available as 'Beach' or 'Ocean', the California embodies the same spirit and charm, yet combines this with quality engineering, comfort, performance and style. Add the latest driver assistance and safety systems and up-to-the-minute infotainment systems and you'll discover the allure to hit the open road is as strong as ever.



Contents.



Enjoy the view.

The California is designed to draw the eye from even the most breathtaking landscape. Wherever you travel, it demonstrates unquestionable style, poise and elegance. What's more, with a host of options such as LED headlights, LED tail lights, a range of stylish alloy wheels and a selection of attractive exterior paint colours, you'll find every journey a pleasure. Simply park-up and enjoy the view.



Optional LED headlights with low energy LED daytime running lights.



Optional low energy, high efficiency LED tail lights.



Infotainment systems.

With an interior that's almost too comfortable to leave, the California offers an ergonomic, highly-specified space with quality finishing and an exclusive atmosphere. What's more, we've taken things a step further by offering a range of stylish and innovative radio and infotainment systems, all designed to help the miles fly by.

Radio and navigation. Devices include the standard Composition Colour touch-screen DAB+ radio system and optional Composition Media DAB+ radio system, Discover Media navigation system and Discover Media navigation system plus.

Voice control.¹ Available as an option with voice enhancement, the voice control system allows you to operate the telephone, navigation and audio functions without taking your hands off the steering wheel.

App-Connect.² Available as an option with the Composition Media DAB+ radio system or Discover Media navigation system. App-Connect allows you to operate special apps. The screen of your smartphone can be shown on the radio system's display.

Connectivity. Available as an option with the Composition Media DAB+ radio system or Discover Media navigation system. External media devices, such as MP3 players, can be connected via an additional USB port. Furthermore, the standard mobile phone interface offers a Bluetooth® hands-free speaking system.

Volkswagen Media Control. Available as an option with App-Connect, your smartphone or tablet is turned into a remote control and is able to operate the audio system functions from the rear seats via a Wi-Fi connection.



Optional Composition Media DAB+ radio system.



Optional App-Connect and Discover Media navigation system.



USB interface within centre console.

1 The 'Voice' control button on the optional Composition Media DAB+ radio system or Discover Media navigation system is only enabled when ordered in conjunction with the optional Voice control system.
2 The 'App' control button on the optional Discover Media navigation system is only enabled when ordered in conjunction with the optional App-Connect system.

A true home from home.



Image shown may not necessarily reflect current UK specification.

After a long day exploring, there's nothing better than returning to your California to take things easy. Whether you simply want to sit back, relax and listen to your latest playlist via the California's up-to-the-minute infotainment systems, or prepare and enjoy a delicious meal, you'll find everything you need within easy reach.

At the front there's 180° swivelling driver and passenger seats with armrests, atmospheric lighting, numerous storage compartments and an ingenious pull-out folding table, enabling you to turn your California's interior into a comfortable lounge or dining area. If you want to dine outside using the optional roll-out awning, standard removable table or twin folding camping chairs that are conveniently stored in the tailgate, you'll discover there's no need to rush home. The living areas of both the Beach and Ocean double as a cosy bedroom with pull-down blinds, while the Ocean's electrically operated and the Beach's manually operated pop-up roofs create a generous upper berth. The Ocean's upper berth also features low energy LED lighting. Whether you're just out for the day or enjoying an extended break, the California is a true home from home.



The Ocean's self-supporting worktop with drop-down leg forms a flexible living area.



Generous 2.0m x 1.2m upper berth.



Numerous storage compartments throughout.

Safety systems.

Your safety is vital, so we ensure that a long list of safety and security features are built into every vehicle we produce. Since we first introduced structural safety features on commercial vehicles over 35 years ago, Volkswagen has maintained a policy of continuous safety development. Every Volkswagen model incorporates a range of both active and passive safety features, to help ensure the safety and security of both you, your passengers and your load.

With the vehicle's design contributing to safety, occupants are securely enclosed within a rigid safety cell with crumple zones to absorb crash energy, while the chassis and suspension are designed for excellent directional stability and handling. Features such as Anti-lock Braking System (ABS), Electronic Brakeforce Distribution (EBD), Electronic Stabilisation Programme (ESP), Front Assist with City Emergency Braking System, driver and passenger front and side airbags, electric seatbelt tensioners, Automatic Post-Collision Braking System and two ISOFIX child seat mountings in the rear passenger area are fitted as standard.

For additional security and protection, an electronic immobiliser and remote central locking with dead locking and internal locking button are standard, while optional features such as front and rear parking sensors, LED headlights, 4MOTION all-wheel drive, automatic rain-sensing wipers and front fog lights with integrated cornering lights (standard on Ocean) all offer additional peace-of-mind.



Electronic Stabilisation Programme (ESP).
Designed to prevent the vehicle from swerving in critical driving conditions by controlled and targeted intervention in the brake and engine management. This helps to maximise directional stability.



Anti-lock Braking System (ABS).
Designed to prevent wheels from locking up and assist manoeuvrability of the vehicle under heavy braking.



Traction Control System (TCS).
Aids smooth starts and acceleration by reducing wheel-spin. The system also incorporates the Electronic Differential Lock (EDL) and makes up part of the Electronic Stabilisation Programme (ESP).



Electronic Differential Lock (EDL).
Allows smooth starts on slippery or loose road surfaces. If one wheel starts to spin, EDL is designed to brake the wheel as necessary, directing power to the wheel with greater traction.



Airbags.
Driver and passenger front airbags are standard. They offer occupants improved protection in the event of head-on impacts.

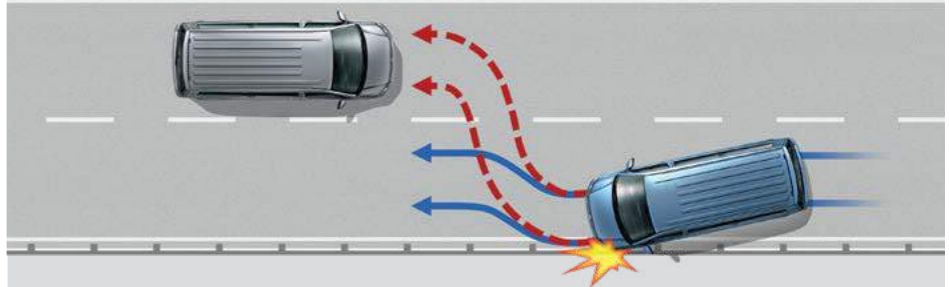


Seatbelt warning.
The seatbelt warning reminds the driver that their seatbelt is not fastened. Audio and visual signals are used to request that the seatbelt is fastened before driving.

Watch video >



Automatic Post-Collision Braking System.
Standard on all California models, it triggers braking after a collision, with the aim of preventing secondary collisions.



Driver assistance systems.







To help ensure every journey ends as stress-free as it begins, the California is equipped with a number of systems – all of which are activated in critical situations as a preventative measure. Add to this a variety of innovative driver assistance systems and you'll discover the California offers high levels of safety and peace-of-mind.



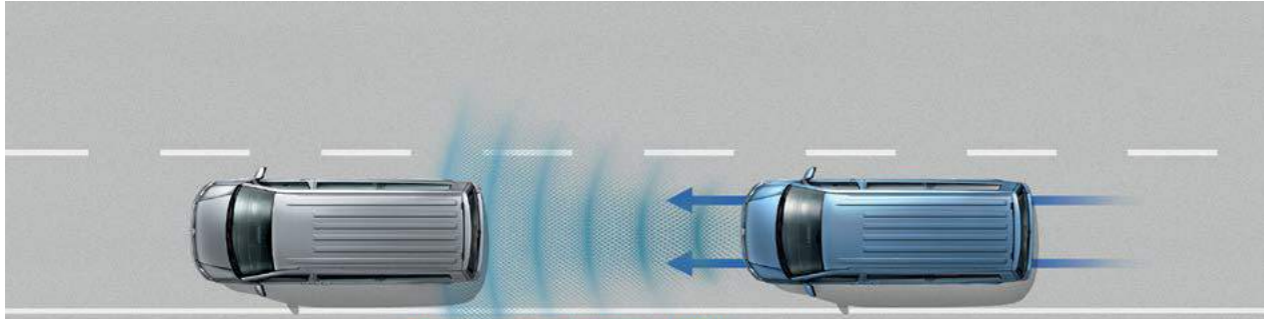
Optional parking sensor display.



Optional rear-view camera display.

| | | |
|--|---|---|
|  <p>Cruise control. Available as an option, cruise control maintains the selected speed.</p> |  <p>Brake Assist. Fitted as standard, the system registers the speed at which the brake pedal is pressed. During emergency braking, it helps ensure full brake pressure is applied more quickly.</p> |  <p>Hill Hold Assist. Fitted as standard, the convenient Hill Hold Assist helps to prevent your vehicle from rolling back when pulling away on an incline. The hold operates for approximately two seconds.</p> |
|  <p>Driver Alert System. Fitted as standard, the Driver Alert System registers deviation from normal steering patterns and uses visual and acoustic warnings to recommend that the driver takes a break.</p> |  <p>Daytime running lights. Fitted as standard, daytime running lights offer increased visibility. For extra driver convenience, the dipped beam headlights are automatically switched on when you start your vehicle.</p> |  <p>Tyre pressure monitoring. The standard tyre pressure monitoring display activates a warning signal to highlight significant changes in tyre pressure. This lets the driver know that the tyre pressure should be checked as soon as possible.</p> |

An intelligent driving experience. Assistance when you need it.



Front Assist with City Emergency Braking System.

Standard Front Assist area monitoring system with City Emergency Braking System detects critical distances, warns of hazardous situations and when necessary, triggers emergency braking.



Adaptive Cruise Control (ACC).

Available as an option, ACC uses a front radar to measure the distance (up to 120m) and speed relative to vehicles driving ahead. It automatically regulates the pre-set distance.



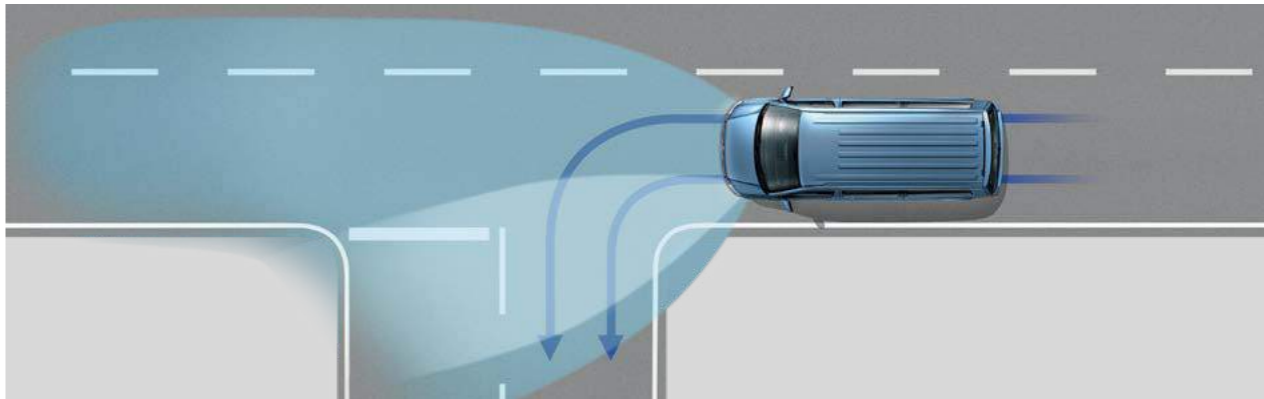
Lane Change Assist - Side Scan.

Available as an option, Side Scan displays a warning signal on the exterior mirror as soon as one of its sensors detects a vehicle in a blind spot during a lane change.



High Beam Assist.

Available as an option, High Beam Assist automatically dips the headlights and prevents dazzle for oncoming vehicles, or vehicles travelling ahead. At night time at speeds of above 37mph, the system automatically switches the headlights to high-beam.



Fog lights with integrated cornering lights.

Fitted as standard on Ocean and available as an option on Beach, these help to illuminate curves and bends in the road ahead. This aids the driver in spotting any obstacles where the vehicle is turning.

Diesel and petrol engines with the Euro 6 emissions standard.

The California offers a generation of diesel and petrol engines featuring the Euro 6 emissions standard. All Californias include efficiency technologies as standard – consisting of low rolling resistance tyres, regenerative braking and Start/Stop. Depending on your engine, you'll receive a 5 or 6-speed manual or 7-speed DSG gearbox as standard, while an optimised chassis contributes to a dynamic driving experience.



Dual clutch direct shift gearbox (DSG).

Our dual clutch direct shift gearbox (DSG) can be used as a fully automatic gearbox, or as a responsive quick-shift manual. The innovative dual clutch system facilitates an instant gear change, whilst helping to maintain swift and smooth progress.

Euro 6 is achieved by applying the following technologies.

Diesel Selective Catalytic Reduction (SCR).

The SCR system uses AdBlue® urea solution to convert nitrogen oxide into nitrogen and water. With this kind of emission control system for diesel engines, the filler neck for the AdBlue® tank is located below the filler cap for the fuel tank. The AdBlue® consumption figures depend on individual driving style, the system's operating temperature and the ambient temperature that the vehicle is operated in. The vehicle is fitted with a separate tank for AdBlue® which holds approximately 13 litres.

Diesel Exhaust Gas Recirculation (EGR).

Our diesel engines use exhaust gas recirculation as a technique to reduce nitrogen oxide (NOx) emissions. EGR works by recirculating a percentage of the engine's exhaust gas back to the engine cylinders.

Diesel Particulate Filter (DPF).

The DPF captures soot particles in the exhaust gas. Periodically, the soot particles are automatically burnt under high temperatures to regenerate the filter and maintain exhaust gas emissions.



TDI Diesel

2.0 litre TDI 150PS (110kW)¹

Combined cycle fuel consumption: 39.2-42.2mpg
CO₂ emissions: 188-175g/km
Maximum torque: 340Nm

2.0 litre TDI 204PS (150kW)¹

Combined cycle fuel consumption: 36.2-38.7mpg
CO₂ emissions: 205-190g/km
Maximum torque: 450Nm

TSI Petrol

2.0 litre TSI 150PS (110kW)¹

Combined cycle fuel consumption: 29.4-29.7mpg
CO₂ emissions: 218-216g/km
Maximum torque: 280Nm

2.0 litre TSI 204PS (150kW)¹

Combined cycle fuel consumption: 30.1mpg
CO₂ emissions: 216g/km
Maximum torque: 350Nm

¹ Standard EU test figures for comparative purposes and may not reflect real driving results. For full mpg and CO₂ data, please refer to the Technical information section.



4MOTION all-wheel drive.

The California offers a number of innovative features to help retain traction, optimum handling and aid steering response when encountering poor surface conditions.

4MOTION all-wheel drive.
The advantages of the Haldex clutch for 4MOTION all-wheel drive is an improvement to vehicle handling and dynamics.

4MOTION all-wheel drive with DSG.
The California is the only vehicle in its class that's available with 4MOTION all-wheel drive and a 7-speed, dual clutch direct shift gearbox (DSG). Available as an option with the 204PS engine, this combination enables smooth driving on rugged terrain, thanks to its fully automatic gear changes.

Hill Descent Control.
This useful option allows you to drive down steep slopes in a safe and controlled manner, thanks to the engine management's ability to govern the engine speed and apply the brakes if necessary. The vehicle's speed is maintained at a steady pace, without the driver needing to have additional input.

Mechanical differential lock.
The optional mechanical differential lock is available for the rear axle together with optional 4MOTION all-wheel drive. This helps to maintain traction when you encounter adverse conditions, such as rain, snow, mud or gravel.

California Beach.

Whether sat in the cab enjoying a commanding view on the way to your destination, or reclining in the living area after hitting the waves, the Beach adapts perfectly to everything life can throw at it – be it the school run, or a last-minute drive to the coast. Cleverly designed and well-equipped, the California Beach's standard interior seats four people and is upholstered in easy-to-clean 'Pilion' fabric. Thanks to its versatile floor-mounted rail system and a variety of seating options, including two additional seats on the second row and a three-seat bench at the rear, it's possible to carry up to seven including the driver, as well as luggage, camping or sports gear and still sleep four on an inviting 2.0m x 1.5m lower berth and 2.0m x 1.2m upper berth. With numerous storage compartments and a comprehensive list of standard and optional features and accessory 'Add Ons'¹, you'll find the California Beach as practical and adaptable as it is stylish.

¹ For a selection of accessory 'Add Ons' please contact your local Volkswagen Commercial Vehicles Van Centre.



Optional folding three-seat rear bench with individual head restraints, seatbelts and under-seat storage.



Standard camping chairs neatly stored in tailgate.



Lower berth with optional comfort mattress.



California Beach standard equipment.

Audio and communications.

Bluetooth® hands-free set.

Composition Colour DAB+ radio system with 5" touch-screen, single MP3 compatible CD drive, SD card slot, AUX-IN socket and six speakers.

USB interface.

Camping.

Awning rail – black with tent adapter.

Body-coloured pop-up aluminium roof, manually operated canvas sides in Alpine Grey, two zip-opening side windows, fly screens, slatted bed frame, 55mm foam mattress and child safety net.

Electric hook-up on near-side rear.

Fabric window blinds (black-out) in cab and living area.

Folding chairs – two, stored in tailgate.

Folding table – attaches to side sliding door.

Lower bed with sleeping mat – includes storage compartment.

Second battery – operating voltage 12V.

Two-person lower bed – converts using the two-seat rear folding bench (length 2,000mm, width 1,140mm, with bed cushion).

Two-person upper bed – converts using the pop-up roof with stowage compartment (length 2,000mm, width 1,200mm).

Exterior.

Additional dust seal outside.

Body-coloured door mirrors and handles.

Body-coloured front and rear bumpers.

Door mirrors – electrically heated and adjustable.

Driver exterior door mirror – aspherical.

Fixed side windows to near-side rear and off-side front and rear.

Galvanised steel body.

Grained black grille with chrome trim.

Halogen headlights.

Heat insulating glass with green tint in cab and living area.

LED tail lights.

Mounting rails on the roof in preparation for movable roof rack.

Passenger exterior door mirror – convex.

Rear fog light.

Sliding door – driver side, manually operated.

Sliding side window to near-side front of living area.

Steel spare wheel with original equipment tyre.

Tailgate with window and wash-wipe.

Tailgate with electric locking and release via remote key.

Interior – cab area.

Armrests for driver and front passenger seats.

Auxiliary heater, electric – not available on TSI engines.

Carpet floor covering.

Climatic semi-automatic air conditioning with manual rear heater control.

Cup holder in dashboard.

Digital clock.

Dimmable dashboard illumination.

Dipping breakaway rear-view mirror.

Door stowage – two compartments with bottle holder able to accommodate 1.5 litre drinks bottles.

Electric front windows.

Fresh air intake system with activated charcoal canister.

Grab handle on 'A' pillar, on driver and front passenger side.

Interior light.

Leather steering wheel, gearknob and gaiter.

Lockable glove compartment.

Multi-function display plus.

Power-assisted steering with height and reach adjustment.

Soft fold-away grab handles on roof frame.

Seat trim in Pillion fabric.

Smokers package – 12V socket with cigarette lighter and ashtray.

Storage net on lower dash passenger side.

Swivelling driver and passenger seats with lumbar support (not height adjustable).

Twin sun visors – with illuminated vanity mirror, sliding cover, storage pocket and airbag label.

Windscreen wiper intermittent control.

12V socket on dashboard.

Interior – living area.

Floor-mounted sliding rail system.

Headlining – moulded and trimmed in fabric.

Interior light concept.

Luggage compartment – under lower bed extension.

Load-lashing rings, for use with tough floor covering.

Plastic entrance step protection.

Plastic side mouldings.

Plastic tailgate sill protection.

Seat trim in Pillion fabric.

Step illumination with California logo for cab doors and side sliding door.

Storage box to left of two-seat rear bench.

Tough plastic floor covering in living area.

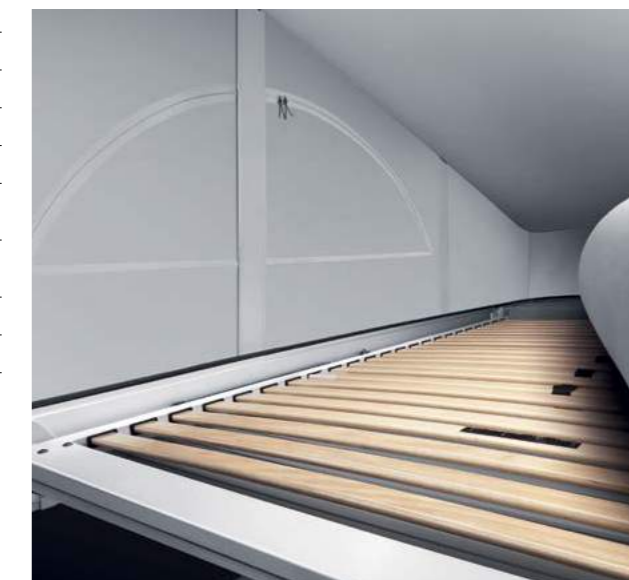
Two-seat rear folding bench – incorporates under-seat storage, ISOFIX child seat mountings and converts into a two-person bed.

12V and 230V UK socket.

230V supply with charging feature for vehicle batteries.



Climatic air conditioning for cab and living area.



Slatted bed frame with 55mm foam mattress.

California Beach standard equipment (continued).

Safety and security.

- Airbags – driver and front passenger side and front curtain with seatbelt tensioners and passenger deactivation.
- Anti-glare adjustable rear-view mirror.
- Anti-lock Braking System (ABS).
- Anti-theft alarm system and immobiliser – Thatcham Category 1 alarm system with passenger compartment control in cab, back-up horn and tow-away protection.
- Automatic Post-Collision Braking System.
- Brake Assist.
- Child lock on side sliding door.
- Daytime running lights.
- Driver Alert System.
- Electronic Brakeforce Distribution (EBD).
- Electronic Differential Lock (EDL).
- Electronic Stabilisation Programme (ESP).

- First aid kit and warning triangle.
- Front Assist with City Emergency Braking.
- Headlight range adjustment.
- Height-adjustable head restraints on all seats.
- Hill Hold Assist.
- ISOFIX and top tether child anchorage in second to fourth rows.
- Remote central locking system with 'Safelock', interior release and two remote folding keys.
- Service indicator – 25,000 miles or 2 years (variable).
- Traction Control System (TCS).
- Two-tone horn.
- Tyre pressure monitoring with warning light.
- Warning sound and light when driver seatbelt not fastened.
- 3-point seatbelts on all seats.

Wheels and tyres.

- 16" Clayton alloy wheels 6.5J x 16 with centre caps.
- 215/65 R16 optimised rolling resistance tyres.
- Full size spare wheel.
- Locking wheel bolts.
- Tool kit and jack.

Efficiency technology.

- Low rolling resistance tyres.
- Regenerative braking.
- Start/Stop.



Black-out window blinds in cab and living areas.



Sliding screen between cab and pop-up roof.



Two folding chairs stored within tailgate.



Folding camping table. Conveniently attaches to the inner of the side sliding door.



16" Clayton alloy wheels.

California Ocean.

Drawing on 60 years experience, the California Ocean moves the original 'camper van' concept onto another level. As you'd expect, the Ocean includes everything you'll need – including a stainless steel sink, two-burner stove, temperature controlled cool/warm box, on-board fresh and waste water tanks, gas storage compartment, electric hook-up, four-berth accommodation, masses of storage and the all important pop-up roof that's been a hallmark of Volkswagen campers down the ages. It's the attention-to-detail that sets the Ocean apart, from the hard-wearing and realistic dark wood-effect trim or stylish 'Valley' upholstery, to the innovative floor-mounted rail system, or the remote/timer controlled parking heater to the central control panel that operates most of the Ocean's features at the touch of a button. Whichever way you look at it, the California Ocean stands out as a vehicle that's been lovingly crafted for the next generation of camper fans.



Optional fold-out awning available with choice of black or silver finish. Suitable for both Ocean and Beach.



Rear cupboard and wardrobe with door and sliding shutter access. Features hanging rail and mirror.



The standard electronic control system conveniently operates a multitude of functions at the touch of a button.



California Ocean standard equipment in addition to Beach.

Audio and communications.

Composition Colour DAB+ radio system with 5" touch-screen, single MP3 compatible CD drive, SD card slot, AUX-IN socket and eight speakers.

Camping.

Body-coloured pop-up aluminium roof, electrically operated with grey canvas sides, two zip-opening side windows, one zip-opening front window, fly screens, slatted bed frame, 55mm foam mattress and child safety net.

Central electronic control system – operates and/or displays battery charge level, battery capacity, external temperature, fridge temperature settings, fresh and waste water levels, waking alarm, parking heater settings and activation of electric pop-up roof.

Cool/warm box – 42 litre capacity with removable basket.

Fresh water storage tank – 30 litre with lockable external filler cap on near-side rear and electric pump.

Gas storage compartment – takes 2.8kg gas cylinder and includes gas pressure regulator with shut-off valve.

Gas stove with two burners and pressure test point.

Kitchen unit – features textured dark wood-effect trim, attachment rail, height-adjustable frosted glass covers, 12V and 230V sockets, storage cupboard with two sliding doors, cutlery drawer and houses stainless steel sink, gas stove and towel bar.

Lower bed with sleeping mat.

Stainless steel sink with height-adjustable tap and removable fitted washing-up bowl.

Two 72Ah auxiliary batteries – maintenance free with cut-off relay for powering living area. Second battery – operating voltage 12V plus 230V AC inverter.

Waste water storage tank.

Exterior.

Automatic headlight activation with daytime running lights.

Double-glazed fixed side windows to near-side and off-side rear.

Door mirrors – electrically heated, adjustable and folding.

Front fog lights with cornering lights.

Halogen twin headlights with range adjustment.

Heated front washer nozzles with washer fluid level indicator.

Power latching side sliding door.

Power latching tailgate with double-glazed heated window, wash-wipe and LED spotlight.

Side indicators with chrome finish.

Sliding side windows with fly screens to near-side and off-side front of living area.

Interior – cab area.

Automatically dimming rear-view mirror and rain sensor.

Climatronic three-zone automatic air conditioning with auxiliary heater, air conditioned headliner and additional passenger control.

Decorative inserts on dashboard.

Dust and pollen filter.

Heated driver and front passenger seats.

Leather multi-function steering wheel.

Luxury cut pile floor mats.

Premium dashboard with wide centre console and bottle compartment.

Programmable parking heater (air) with radio remote control and auxiliary heater (coolant) – not available on TSI models.

Seat trim in Valley fabric.

Interior – living area.

Cupboard with textured dark wood-effect trim.

Drop-down rear compartment – features textured dark wood-effect trim and incorporates rear speakers.

Flexible halogen spotlight – multi-directional stem, targets light into the living area or pop-up roof.

Flexible worktop with drop-down leg.

Interior light concept 'Comfort', includes lighting in pop-up roof, tailgate and kitchen unit.

Lighting above side sliding door.

Seat trim in Valley fabric.

Wardrobe with door and sliding shutter access – features textured dark wood-effect trim.

Wheels and tyres.

17" Devonport alloy wheels 7J x 17 with centre caps.

235/55 R17 optimised rolling resistance tyres.

Full size spare wheel.

Locking wheel bolts.

Tool kit and jack.



Cool/warm box with 42 litre capacity and removable basket.



Rear cupboard with gas storage compartment for 2.8kg gas cylinder.

California Ocean standard equipment in addition to Beach (continued).



Standard lower berth allows easy access to storage compartments and wardrobe. An optional comfort bed-topper is also available.



Drop-down rear compartment incorporating rear speakers.



17" Devonport alloy wheels.



Climatronic three-zone automatic air conditioning and heated driver and front passenger seats.



Wardrobe with door and sliding shutter access. Features hanging rail and mirror.

Paint, upholstery & trim.

Formulated to withstand the rigours of everyday life, the California's paint and upholstery are designed to stand the test of time. As you'd expect from any Volkswagen, exterior paints offer a smooth and tough finish, while the interior upholstery is made from high-quality materials that are both attractive and robust.

Solid paint.



Candy White



Cherry Red



Grape Yellow^{1,2}

Metallic paint.²



Reflex Silver



Indium Grey



Mojave Beige



Chestnut Brown



Bamboo Garden Green

Pearl effect paint.²



Acapulco Blue



Starlight Blue



Oryx White



Deep Black

1 Available for Beach only.
2 Available at extra cost.

Please note: Not all paint and upholstery combinations can be ordered together and in some instances certain combinations may incur extra cost. Not all paint finishes may be available for every trimline. Please check details and availability with your Volkswagen Van Centre at the time of ordering. Screen representations do not allow exact reproduction of paint, upholstery and trim colours.

Paint, upholstery & trim (continued).

Two tone paint.¹



Indium Grey upper / Deep Black pearl lower



Candy White upper / Indium Grey lower



Candy White upper / Bamboo Garden lower



Candy White upper / Mojave Beige lower

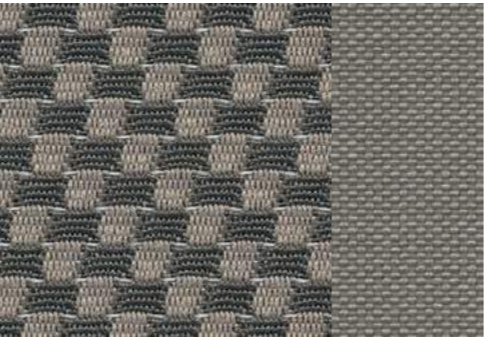


Candy White upper / Starlight Blue lower



Candy White upper / Cherry Red lower

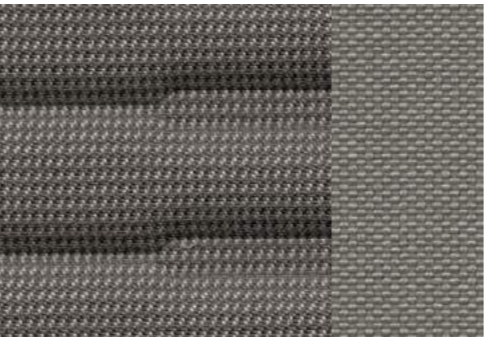
Seat upholstery.



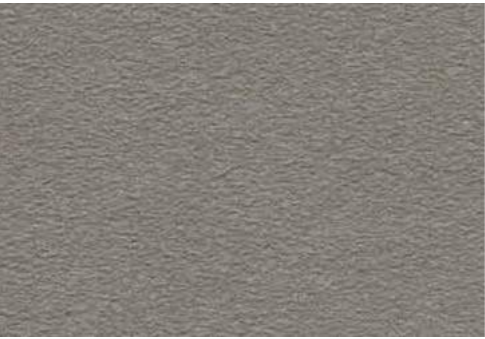
Pilon Moonrock Grey cloth **BE**



Kutamo² Titanium Black/Moonrock Grey cloth **BE**



Valley Moonrock Grey cloth **OC**



Alcantara^{®1} Moonrock Grey **BE OC**

Decorative insert and trim.



Metallic insert Anthracite **OC**



Brushed trim Dark Silver **OC**

Interior colour.



Titanium Black **BE**



Moonrock Grey **BE OC**



01 Interior colour
02 Decorative insert
03 Decorative trim

Standard Optional
BE | Beach OC | Ocean

1 Available at extra cost.
2 Only available in combination with 3-seat rear bench at extra cost.

Please note: Not all paint and upholstery combinations can be ordered together and in some instances certain combinations may incur extra cost. Not all paint finishes may be available for every trimline. Please check details and availability with your Volkswagen Van Centre at the time of ordering. Screen representations do not allow exact reproduction of paint, upholstery and trim colours.

Wheels.

01 16" Clayton 16 x 6.5J alloy wheels with 215/65 R16 tyres. Standard on Beach models.

02 17" Devonport 17 x 7J alloy wheels with 235/55 R17 tyres. Standard on Ocean and optional on Beach models.

03 17" Cascavel Anthracite with diamond-turned surface. 17 x 7J alloy wheels with 235/55 R17 or 215/60 R17 tyres. Optional on Beach and Ocean models.

04 17" Cascavel Black with diamond-turned surface. 17 x 7J alloy wheels with 235/55 R17 or 215/60 R17 tyres. Optional on Beach and Ocean models.

05 18" Toluca 18 x 8J alloy wheels with 255/45 R18 tyres. 204PS only. Optional on Ocean models.



Audio & communications.



01 Composition Colour DAB+ radio system.

Fitted as standard, the Composition Colour DAB+ radio system features a 5" TFT touch-screen colour display, USB port, Bluetooth®, SD card slot, AUX-IN interface, MP3 and WMA compatible CD drive, 4 x 20 watt output with six speakers¹ and a dual tuner with PhaseDiversity for optimum radio reception.

02 Composition Media DAB+ radio system.

The optional Composition Media DAB+ radio system features an increased touch-screen size of 6.33" with proximity sensor, USB port, Bluetooth®, SD card slot, AUX-IN interface, MP3 and WMA compatible CD drive, 4 x 20 watt output with six speakers¹ and a dual tuner with PhaseDiversity for optimum radio reception. App-Connect is available as an option for this system.

03 Discover Media satellite navigation system.

The optional Discover Media satellite navigation system builds on the strengths of the Composition Media DAB+ radio system by adding satellite navigation and a second integrated SD card slot compatible for map data. The system includes free updates for the pre-installed European maps through Volkswagen MapCare. App-Connect is available as an option for this system.

04 App-Connect.² Available as an option with the Composition Media DAB+ radio system or Discover Media navigation system. App-Connect allows you to operate special apps. The screen of your smartphone can be shown on the radio system's display.

¹ The California Ocean features eight speakers as standard.

² The 'App' control button on the optional Discover Media navigation system is only enabled when ordered in conjunction with the optional App-Connect system.


Mobile online services.


Optional App-Connect – Volkswagen apps.¹


Download special Volkswagen apps to your mobile or tablet, such as 'Shared Audio', 'Drive & Track', 'Call & Remind', 'My Guide' and 'Sound Journey' to make every journey more pleasant and interesting. The apps provide you with information about your driving behaviour, guide you to parking spaces in the vicinity, make detailed suggestions about exciting destinations – all taking into account the weather and traffic data.


Optional Car-Net Guide & Inform.²


Use Car-Net Guide & Inform to enhance your vehicle's optional Discover Media navigation system with online-based, up-to-date information services for greater convenience when travelling. For example, utilise real-time traffic information to avoid a sudden traffic jam, or refuel at the cheapest fuel station, or find a free parking space without the need for an infuriating search. Car-Net Guide & Inform helps you to reach your destination quickly and with the least amount of stress.


 **Online traffic information.**
Save time and avoid stress with real-time traffic information, enabling you to avoid traffic jams by dynamically adapting your route.


 **News.**
Subscribe to personalised news categories and use the news feeds to stay up-to-date.


 **Fuel stations.³**
View the fuel stations with the cheapest fuel prices in your immediate vicinity. Your vehicle's fuel type is automatically identified.


 **Online destination import.**
Conveniently plan your driving destinations from home using the customer portal and retrieve them using the navigation system.

 **Parking spaces.³**
Save time and view available parking options, along with prices and opening hours.

 **My special destinations.**
Use the customer portal to save your preferred destinations while at home and import these into your vehicle's navigation system.

 **Weather.**
Stay up-to-date with the latest weather information while on the move.

 **Vehicle status report.**
Retrieve the latest service information and error messages from your vehicle.

 **Online special destination search.**
Customised information about local services is sent directly to your touch-screen display.



- Car-Net registration in a few easy steps:**
1. Create your personal account on the Car-Net website.
 2. You will receive a registration code (PIN).
 3. Enter your vehicle identification number (VIN).
 4. Enter the PIN into your vehicle's navigation system.

¹ Available as an option, App-Connect is only available in conjunction with the Composition Media DAB+ radio system or the Discover Media satellite navigation system. App-Connect comprises MirrorLink™, CarPlay™ and Android Auto™. The availability of these technologies can vary depending on the country in question. Please note that App-Connect is not currently supported by all mobile telephones on the market. Volkswagen is working closely with major smartphone producers to promote broader compatibility for App-Connect.
² Available as an option, mobile online services (Car-Net) is only available in conjunction with the Discover Media satellite navigation system. You will also require a mobile device that is capable of acting as a mobile wireless hotspot. Car-Net services are only available with an existing mobile network contract or one to be agreed separately for this purpose between you and your mobile phone network provider and only within the respective mobile phone network coverage. Depending on your mobile phone tariff, receiving data from the internet may incur additional charges, particularly if you are using the phone abroad. Due to the amount of data needed when using Car-Net services, we strongly recommend signing-up to a data flat rate with your mobile phone provider. Use of Car-Net is governed in a separate agreement with Volkswagen AG online. After taking possession of the vehicle, you have 90 days in which to register the vehicle at www.volkswagen-commercial-vehicles-carnet.com. The availability of Car-Net services may vary depending on the country in question. These services are available for the duration of the contract term agreed and may be subject to changes in terms of content during the contract period. More detailed information on Car-Net is available at www.volkswagen-commercial-vehicles-carnet.com and from your Volkswagen Commercial Vehicles Van Centre. Contact your mobile network provider for information regarding your mobile network tariff.
³ Available at participating fuel stations and car parks.

Engine & gearbox data.

| Engine specifications. | 2.0TSI 150PS | 2.0TSI 204PS | 2.0TDI 150PS | 2.0TDI 204PS |
|--------------------------------------|--|--|--|--|
| Engine type | Petrol, transverse, water-cooled, in-line, variable turbine geometry turbocharger with intercooler | Petrol, transverse, water-cooled, in-line, variable turbine geometry turbocharger with intercooler | Diesel, transverse, water-cooled, in-line, variable turbine geometry turbocharger with intercooler | Diesel, transverse, water-cooled, in-line, bi-turbo with intercooler |
| Mixture preparation/injection method | Petrol, direct injection | Petrol, direct injection | Common-rail, direct injection | Common-rail, direct injection |
| EU exhaust emission standard | EURO 6 | EURO 6 | EURO 6 | EURO 6 |
| Number of cylinders | 4 | 4 | 4 | 4 |
| Cubic capacity | 1,984cc | 1,984cc | 1,968cc | 1,968cc |
| Output, PS at rpm | 150 at 3,750-6,000 | 204 at 4,200-6000 | 150 at 3,250-3,750 | 204 at 4,000 |
| Torque, max. Nm at rpm | 280 at 1,500-3,750 | 350 at 1,500-4,000 | 340 at 1,500-3,000 | 450 at 1,400-2,400 |
| Fuel tank capacity | 80 litre | 80 litre | 70 litre | 70 litre |
| AdBlue® capacity | - | - | 13 litre | 13 litre |
| Diesel Particulate Filter [DPF] | - | - | ● | ● |
| 5-speed manual gearbox | - | - | - | - |
| 6-speed manual gearbox | ● | - | ○ | - |
| 7-speed dual clutch gearbox [DSG] | - | ● | ● | ● |
| Front-wheel drive | ● | ● | ● | ● |
| 4MOTION all-wheel drive | - | - | ○ | ○ |
| Alternator | 180A | 180A | 180A | 180A |
| Battery - manual | 68Ah (380A) | - | 68Ah (380A) | - |
| Battery - DSG | - | 68Ah (380A) | 75Ah (420A) | 75Ah (420A) |

● Standard ○ Available - Not available

Fuel consumption, performance and emissions.

| Engine/transmission | Urban mpg (ltr/100km) ¹ | Extra-Urban mpg (ltr/100km) ¹ | Combined mpg (ltr/100km) ¹ | Acceleration, seconds 0 - 62mph | Top speed, mph, (where law permits) | CO ₂ emissions, g/km ¹ |
|-------------------------------------|------------------------------------|--|---------------------------------------|---------------------------------|-------------------------------------|--|
| California Beach. | | | | | | |
| 2.0TSI 150PS 6-speed manual | 22.6 (12.5) | 36.2 (7.8) | 29.7 (9.5) | 12.5 | 113 | 216 |
| 2.0TDI 150PS 7-speed DSG | 37.2 (7.6) | 45.6 (6.2) | 42.2 (6.7) | 14.5 | 109 | 175 |
| California Ocean. | | | | | | |
| 2.0TSI 150PS 6-speed manual | 22.4 (12.6) | 35.8 (7.9) | 29.4 (9.6) | 13.8 | 111 | 218 |
| 2.0TSI 204PS 7-speed DSG | 23.3 (12.1) | 35.8 (7.9) | 30.1 (9.4) | 10.5 | 123 | 216 |
| 2.0TDI 150PS 7-speed DSG | 36.7 (7.7) | 44.8 (6.3) | 41.5 (6.8) | 14.5 | 109 | 177 |
| 2.0TDI 150PS 4MOTION 6-speed manual | 32.5 (8.7) | 44.1 (6.4) | 39.2 (7.2) | 14.3 | 110 | 188 |
| 2.0TDI 204PS 7-speed DSG | 32.5 (8.7) | 44.1 (6.4) | 38.7 (7.3) | 11.0 | 121 | 190 |
| 2.0TDI 204PS 4MOTION 7-speed DSG | 29.7 (9.5) | 40.9 (6.9) | 36.2 (7.8) | 11.1 | 121 | 205 |

¹ Fuel consumption and CO₂ figures are obtained under standardised EU test conditions. This allows a direct comparison between different manufacturer models but may not represent the actual fuel consumption achieved in 'real world' driving conditions. In addition to the fuel efficiency of a vehicle, driving behaviour as well as other non-technical factors (such as environmental conditions, including weather and traffic) play a role in determining a vehicle's fuel consumption and CO₂ emissions. More information is available at www.dft.gov.uk/vca. Other factors including Gross Vehicle Weight, trimline, extra equipment, options and accessories (wheels, tyres, etc.) may change vehicle parameters such as the weight, rolling resistance of the tyres and the aerodynamics and thus influence the fuel consumption, CO₂ emissions and driving performance values. Comparisons may be unreliable.

Fuel consumption and CO₂ emissions data provided within the brochure are for the model year 2018 vehicle. We are currently changing over to model year 2019 vehicles, which are subject to new tests and rules. If you order a vehicle now, it is likely to have different official fuel consumption, CO₂ emissions data and specification to that shown in the brochure. For more information, please speak to your local Volkswagen Commercial Vehicles Van Centre.

Weights.

| Engine/transmission | Gross vehicle weight, kg | Axle load limit, front/rear, kg | Trailer weight braked 12%/unbraked, kg | Gross train weight, kg | Unladen weight ¹ , kg | Payload ² , kg |
|-------------------------------------|--------------------------|---------------------------------|--|------------------------|----------------------------------|---------------------------|
| California Beach. | | | | | | |
| 2.0TSI 150PS 6-speed manual | 3,000 | 1,610 / 1,550 | 2,500 / 750 | 5,200 | 2,351 | 649 |
| 2.0TDI 150PS 7-speed DSG | 3,000 | 1,610 / 1,550 | 2,500 / 750 | 5,300 | 2,380 | 620 |
| California Ocean. | | | | | | |
| 2.0TSI 150PS 6-speed manual | 3,080 | 1,610 / 1,575 | 2,500 / 750 | 5,200 | 2,518 | 562 |
| 2.0TSI 204PS 7-speed DSG | 3,080 | 1,610 / 1,575 | 2,500 / 750 | 5,300 | 2,537 | 543 |
| 2.0TDI 150PS 7-speed DSG | 3,080 | 1,610 / 1,575 | 2,500 / 750 | 5,300 | 2,546 | 534 |
| 2.0TDI 150PS 4MOTION 6-speed manual | 3,080 | 1,610 / 1,575 | 2,500 / 750 | 5,300 | 2,635 | 445 |
| 2.0TDI 204PS 7-speed DSG | 3,080 | 1,610 / 1,575 | 2,500 / 750 | 5,300 | 2,568 | 512 |
| 2.0TDI 204PS 4MOTION 7-speed DSG | 3,080 | 1,610 / 1,575 | 2,500 / 750 | 5,300 | 2,669 | 411 |

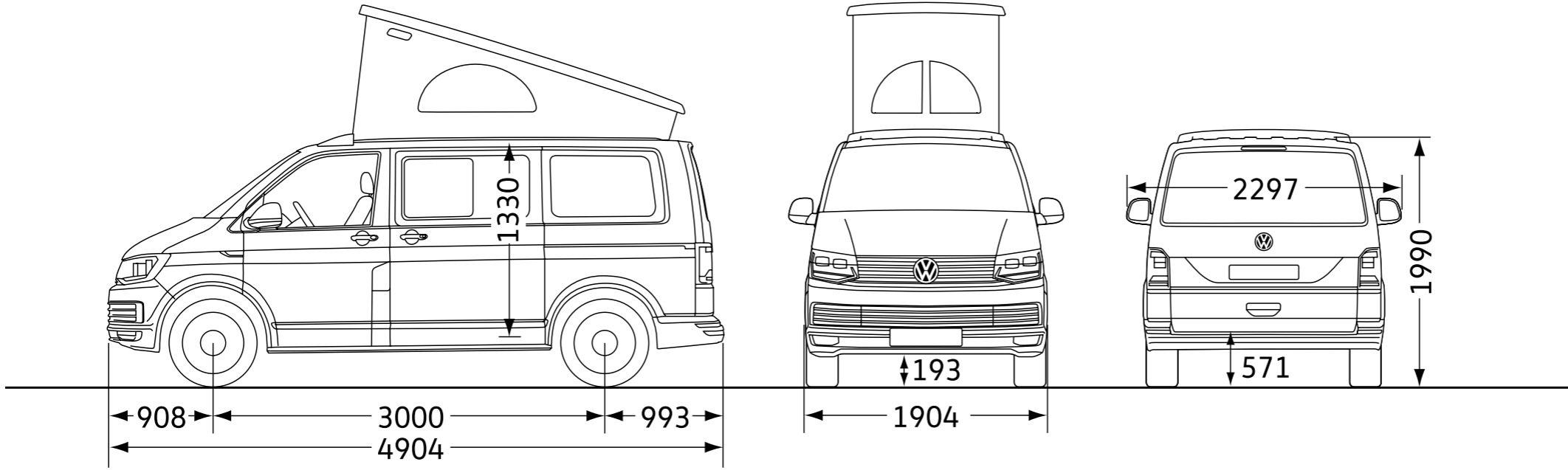
¹ Unladen weight includes approximately 90% fuel load and 75kg for driver.

² Payload = gross vehicle weight minus unladen weight. Quoted weights are for vehicles with standard specification. Unladen weight and payload may be influenced by trimline, factory options and Van Centre fitted accessories. Roof load limit: 50kg max with closed elevating roof. Trailer nose weight: 100kg.

Dimensions and floor plans.

California Beach and Ocean dimensions.

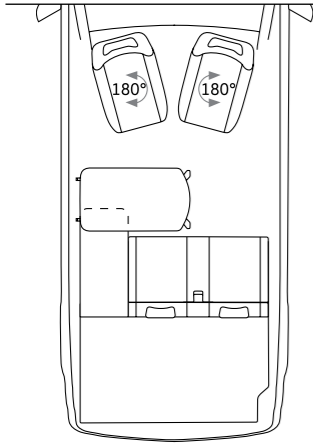
| | | Beach | Ocean |
|-------------------------------|--------|-------------------|-------------------|
| Wheelbase | | 3,000 | 3,000 |
| Living area | | 4.3m ² | 4.0m ² |
| Side door opening | width | 1,011 | 1,011 |
| | height | 1,247 | 1,247 |
| Tailgate opening | width | 1,438 | 1,438 |
| | height | 1,262 | 1,262 |
| Turning circle (wall to wall) | | 11.9m | 11.9m |



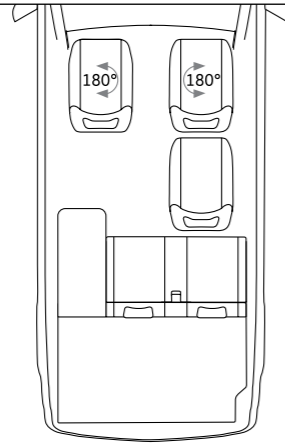
Please note: Vehicle drawings are not to scale. All dimensions in millimetres (mm), unless otherwise stated. The height measurements listed may vary by ± 50mm depending on model and equipment fitted.

Dimensions and floor plans (continued).

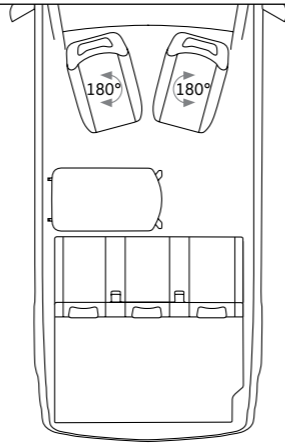
California Beach floor plans.



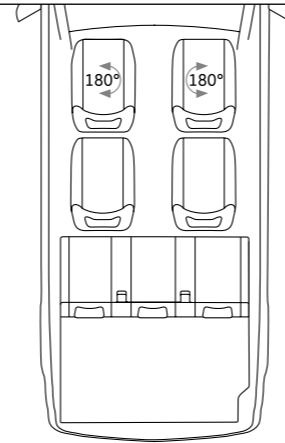
Standard two-seat rear bench with storage chest.



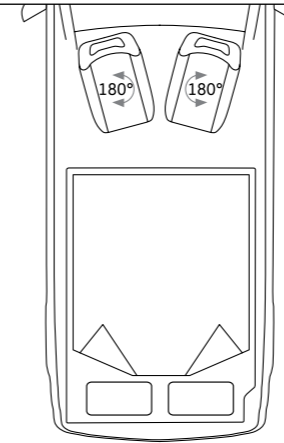
Standard layout with optional second row seat.



Three-seat rear bench (no-cost option).

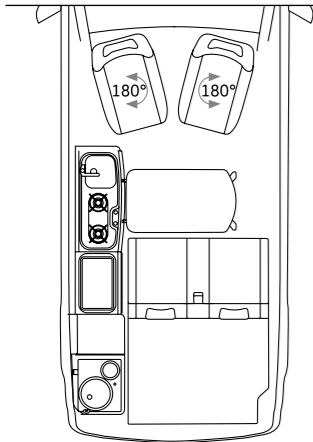


Three-seat rear bench with optional second row seats.

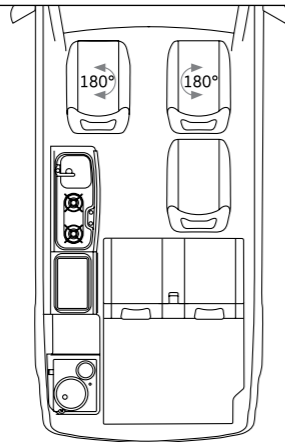


Standard lower bed (size: 2.0m x 1.5m).

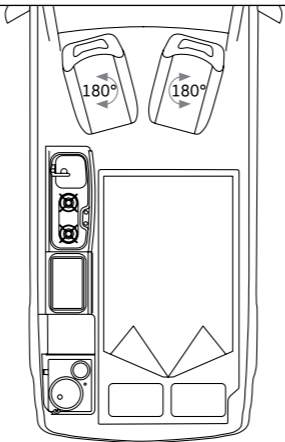
California Ocean floor plans.



Standard two-seat rear bench with full kitchen and storage.



Standard layout with optional second row seat.



Standard lower bed (size: 2.0m x 1.14m).

Please note: Vehicle drawings are not to scale. All dimensions in millimetres (mm), unless otherwise stated. The height measurements listed may vary by ± 50 mm depending on model and equipment fitted.

Add Ons

Accessories to help keep your vehicle 100% Volkswagen

Add more with Add Ons...

Add extra style, protection and practicality to your California, while still keeping it 100% Volkswagen.

Add Ons allow you to go beyond options and truly customise your vehicle. Whether you want added technology or need extra capacity with roof attachments or a tow bar, there's something in our Add Ons range for you.

Keep it 100% Volkswagen.

There are big advantages to purchasing approved accessories from us. Add Ons have all been designed with your Volkswagen in mind, so they're a perfect match for fit and style. They're built to be rugged, reliable and long-lasting.

Keep your Add Ons covered.

Most Add Ons include a two-year warranty, but the great news is that if you order and fit them when you purchase a new vehicle, we may be able to extend that to three years to match your vehicle's warranty.



Discover the full Add Ons range. Pick-up an Accessories brochure, pop into your nearest Van Centre, or call 0800 717 131.



Roof bars. (pictured with surfboard holder)
Fitting a pair of roof bars to your California helps increase your load carrying capacity by up to 50kg/110lbs. Roof bars provide the base for a wide range of carriers such as a surfboard holder, ski and snowboard holder, bicycle holder and our useful roof boxes – available in a choice of colours, shapes and sizes. Speak to your local Van Centre to discover the full range.



Towbar – detachable.
Compatible with 13-pin towing electrics, this detachable towbar is both stable and strong. When not in use it can be safely stored inside the vehicle.



Towbar – fixed.
Increase your load capability with this fixed towbar. Compatible with 13-pin towing electrics.



Front window wind deflectors.
These front window wind deflectors are not only stylish, but also help deflect wind noise – offering added comfort while on the move.

Rear bumper protector – carbon fibre.
Stylish and sporty, this real carbon fibre protector not only looks great, but prevents damage when loading and unloading. Also available in Black or Silver.

Carbon fibre mirror covers.
Genuine carbon fibre finished in a high gloss lacquer that gives a sporty look to your wing mirrors.

Angled side bars.
Stylish and subtle, these angled side bars protect the sills from damage and are designed to look great. Available in Black or polished stainless steel.



Bicycle holder for tailgate.

Quick and easy to fit, this sturdy and well-engineered bicycle holder transports up to four bikes safely and securely. Weight limit: 60kg.

Please note: holder not compatible with tailgate roof spoilers. Tailgate should not be lifted with bicycles in place.



18" Sportline alloy wheel.

Enhance your vehicle's appearance with these stylish two-tone Anthracite/Silver alloys. 8J x 18". Requires 235/50 R18 tyre. Also finished in two-tone Black/Silver, gloss Black, gloss Anthracite and gloss Silver.



Waterproof seat covers.

Protect your seats and headrests from moisture and dirt with these fitted, removable and machine washable waterproof seat covers.

Please note: not available for California Beach.



Ski and snowboard holder.

Transport your skis and snowboards securely and effectively with this dedicated carrier that can be locked for added security. Holds up to six pairs of skis or four snowboards. Used in conjunction with roof bars.



Surfboard holder.

Helps to ensure your surfboard reaches its destination safely. A surfboard plus two masts are held firmly and securely in place using protective rubber supports and robust retaining straps. Used in conjunction with roof bars.



Kayak holder.

Specially developed for transporting one-man kayaks weighing up to 25kg, the kayak holder restrains kayaks conveniently, safely and securely. Used in conjunction with roof bars.



Lowering springs.

Lower your vehicle by 30mm to create a purposeful and dynamic stance. Available for vehicles with a front axle weight of up to 1,550kg or 1,600kg.



Kenwood DVR-410 driver safety camera.

The premium Kenwood DVR-410 driver safety camera is hard-wired into your vehicle and provides a compact windscreen-mounted camera with GPS technology, SD card slot (including SD card), 1.5" screen, built-in microphone and four recording modes. The DVR-410 not only records the actions of other road users in glorious high definition, but also features a range of safety systems, including parking, forward collision, lane departure and departure delay settings.



Door sill guards.
Enhance the visual appeal of your vehicle with these perfectly contoured ABS mouldings. They offer additional protection and in the event of a scrape, can easily be replaced to restore your vehicle's good looks again.

Front or rear mudflaps.
Perfectly shaped to fit your vehicle, these durable, black, hard-wearing mudflaps offer protection against water spray and flying stones. Supplied in pairs for front or rear with fitting kit and instructions.



Front heavy-duty rubber mats.
These heavy-duty rubber mats feature deep channels to prevent liquids and dirt spilling onto the cab floor. Designed for a perfect fit, the mats are held firmly in place by making use of the attachment points provided on the floor.

Front carpet mats.
One or two-piece textile mat sets that perfectly fit the floor of your vehicle. Made from tightly woven velour with a practical non-slip backing, the mats are held firmly in place by making use of the attachment points provided on the floor.



Mens heritage polo shirt.
This stylish Dark Blue polo shirt made from cotton piqué, features Red and White stripes and an embroidered Arqueonautus logo on the chest. Available in a range of sizes from M to XXL.

Volkswagen embossed circular cufflinks.
Made from stainless steel, the face features an embossed VW logo, while the Black PVC-coated sides feature Volkswagen lettering.

Campervan money box.
A brightly designed money box in the shape of a classic T1. Features a stopper on the underside for retrieving your savings.

Mens chronograph watch.
This high-quality 43mm diameter watch features a diver's bezel, Black face, leather strap and is waterproof to 5 ATM. The face features independent displays for hours, minutes and seconds.

Ladies chronograph watch.
This stylish 35mm diameter watch features a diver's bezel, Black face, leather strap and is waterproof to 5 ATM.

T6 Umbrella.
Stay dry with style. This Dark Blue nylon umbrella features a carbon fibre stem and frame and a Grey underside illustrated with a Caravelle Generation Six graphic.

Campervan leather keyring.
Made from Dark Blue leather and featuring a T1 print mounted in metal to the front and an embossed VW logo on the reverse.

This is just a small selection of our Lifestyle range. To discover more, visit your local Volkswagen Van Centre.

Configure your Volkswagen van.

Load

Choose fewer models

Show all



Caddy Panel van



Caddy Kombi



Caddy Window van



Caddy Life



Transporter Single Cab



Transporter Double Cab



Transporter Panel van



Transporter Kombi



Transporter Window van



Transporter Shuttle



California



Caravelle



The NEW Crafter Single Cab



The NEW Crafter Double Cab



Amarok



The NEW Crafter Panel van



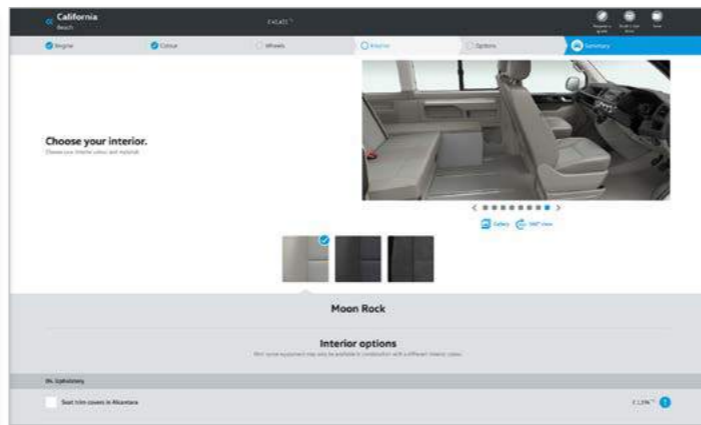
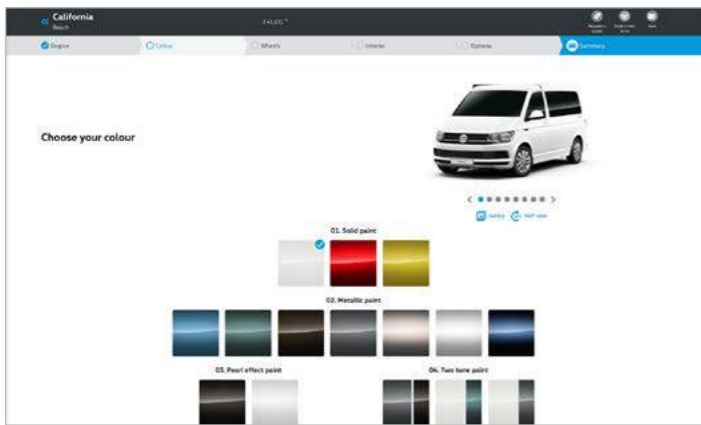
Book a test drive
Meet your new Volkswagen



Contact your local Van Centre
Talk to one of our experts



Load
Load a previous configuration



Build your own.

Create your perfect Volkswagen commercial vehicle with the 'build your own' configurator found on our web site by simply clicking on the button above.

Finance made simple.

As dedicated to finance as we are to your new California.

Learn more about our range of finance products to find a finance package that suits your budget.


Alternatively, 'Click on' the Offers & Finance button above to find out more about our latest offers to help your business thrive.

Cost of your vehicle

Deposit
As little as one monthly repayment

Monthly repayments
Spread across 18 to 49 months

Optional final payment
You have three choices at the end of your agreement



Own
Hire


Solutions Personal Contract Plan

Not sure if you want to own or hire? Make the decision later. Pay monthly payments for the length of your agreement. At the end you can decide to keep (once all payments have been made), upgrade or return the vehicle.

Cost of your vehicle

Deposit
As little as one monthly repayment

Repayments
Spread across 12 to 60 months



Own

Hire Purchase


Make all the regular monthly payments. At the end the vehicles is yours.

Cost of your vehicle

Deposit
As little as one monthly repayment

Rental repayments
Spread across 12 to 48 months

Final 'balloon' repayment



Own


Lease Purchase

Make lower monthly payments by deferring an amount until the end. Once paid the vehicle is yours.

Cost of your vehicle

Initial rental
As little as one rental repayment

Rental repayments
Spread across 12 to 60 months



Hire


Contract Hire

Pay fixed monthly rentals to hire the vehicle. Look after it so at the end you can return it hassle free.

Cost of your vehicle

Initial rental
As little as one rental repayment in advance

Rental repayments
Spread across 12 to 60 months



Hire

Finance Lease (full pay out)


Pay monthly rentals to hire the vehicle. At the end you have two options. Sell the vehicle and receive a percentage of the sale proceeds. Or retain the use of your vehicle by paying a reduced annual rental.

Cost of your vehicle

Initial rental
As little as one rental repayment in advance

Rental repayments
Spread across 12 to 48 months

Final 'balloon' repayment
You have two options at the end of your agreement

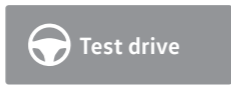


Hire

Finance Lease (balloon repayment)

Pay monthly rentals to hire the vehicle. At the end you have two options. Sell the vehicle to settle the outstanding amount and receive any excess sale proceeds. Or pay the 'balloon' payment and retain the use of your vehicle by paying a reduced annual rental.

Finance subject to status. Available to 18s and over in the UK only. Terms and Conditions apply. Volkswagen Commercial Vehicle Financial Services.



Service & warranties.

Finance and insurance.¹

When it comes to paying for your van, we've got options including Contract Hire and Finance Lease, or Hire Purchase. We can also offer you competitive insurance.

A choice of packages.²

Whether you prefer to lease your vehicles, with none of the concerns of ownership and the freedom to change models easily, or purchase outright to own the vehicle, we're here to help you consider your options.

You can go flexible, by choosing a payment plan that suits your finances, with options to reduce your monthly costs and your repayment period. Or choose a fixed monthly price that allows you to budget confidently for the longer term.

You can even include your road tax and servicing costs to arrive at one simple, all-inclusive payment. For more information, pick up a finance brochure, or ask at your Van Centre.

Volkswagen insurance.

Volkswagen Commercial Vehicles Insurance³ provides cost-effective and comprehensive motor insurance³, as well as gap insurance⁴, which helps replace your vehicle and protect you from any financial shortfall if it's written off.

Insurance benefits include:

- Complimentary 5-day drive away insurance cover.
- All repairs performed by approved repairers.
- Volkswagen Genuine Parts[®] used on all repairs.
- Courtesy vehicle provided during repair following an accident (subject to availability).
- Cover for breakage and damage to glass.
- In-vehicle personal belongings cover (up to £250).
- Vehicle recovery.
- 90-day European Union cover.

For more information about our motor insurance call: **0345 877 6355** (lines open 9am-6pm Monday-Friday) or visit: insurewithvvcv.co.uk

Servicing and support.

We're here to keep you moving, with our range of three award-winning⁵ servicing and maintenance options, as well as free Roadside Assistance. Some exclusions apply. For more detail, please visit www.volkswagen-vans.co.uk/aftersales.

Pay monthly.

This option is available for vehicles that are less than 12 months old and have covered less than 10,000 miles. It makes budgeting easier by splitting the cost of servicing into fixed monthly payments – whether you want Service only; Service and Maintenance; or Service, Maintenance and Tyres.

Pay upfront.⁶

If you can pay for more than one service upfront, we'll help by reducing your costs. Buy two upfront and you'll receive one interim and one full service at a discounted rate. Buy four and you'll receive two interim and two full services, with your next MOT also included.

Pay on demand.

If you're looking for freedom and flexibility with your servicing, it's good to know we're ready when you are. So with our third option, you can choose to pay for your services as and when you need them, with our National Service Pricing. Ask your Van Centre for an up-to-date pricing guide.

Roadside Assistance.

We understand the need to keep you mobile. That's why all new vans come with three-year, unlimited mileage roadside cover. Should the unexpected happen, one call gets you straight through to a team trained to help you through any breakdown or accident. Supporting you every day will be a team of vehicle technicians, fully-trained by Volkswagen and carrying the latest diagnostic equipment, specialist tools and parts.

Assistance benefits include:

- Assistance at home, by the roadside or place of work.
- Recovery to your preferred location.
- Onward travel, for you and your cargo.
- Cover 24 hours a day, 365 days a year.
- Free cover for three years (on new vehicles).
- Unlimited mileage.
- European cover.
- Option to extend cover beyond three years.

Warranties.

You can count on us long after you purchase your California, thanks to its comprehensive three-year, 100,000 mile warranty. While your California is under warranty, we'll fix any defect in manufacture or workmanship free of charge, even if you purchase and service the vehicle at different Van Centres. Some exclusions apply and the vehicle must be cared for using the guidance in your owner's manual. For more detail, please visit www.volkswagen-vans.co.uk/aftersales.

Extended warranty.

You can also extend your warranty beyond the three-year, 100,000 mile period, choosing either Comprehensive or Major Component cover, as a one-off or monthly payment. For more detail of cover levels, along with terms and conditions, please visit volkswagencvwarranty.co.uk where you'll also be able to obtain a quote and purchase an extended warranty.

Paint and body warranty.

Your California's exterior paintwork is covered against manufacturing defects for a period of three years, while its body sections and panels are covered against rusting through from the inside for 12 years. Some exclusions apply and the vehicle must be cared for using the guidance in your owner's manual.

The Van Centre network.

Our **dedicated Van Centre network** is at the core of everything we do and is always there to help. As a separate brand within the Volkswagen Group, it makes sense to make use of your nearest Van Centre – it's full of experts who understand your vehicle better than anyone else and can help you to get the most out of it.

Over **70 Van Centres** and **24 Authorised Repairers**, means you're only around 45 minutes on average from our door.

1 Volkswagen Commercial Vehicles Insurance and Volkswagen Commercial Vehicle Financial Services are trading names of Volkswagen Financial Services (UK) Limited, Brunswick Court, Yeomans Drive, Blakelands, Milton Keynes MK14 5LR, which is authorised and regulated by the Financial Conduct Authority (FCA). Registered in England and Wales No. 2835230. Volkswagen Financial Services (UK) Limited financial services register number is 311988.

2 An offer of finance depends on certain conditions. Finance subject to status. Available to 18s and over. Terms and conditions apply. Volkswagen Commercial Vehicle Financial Services.

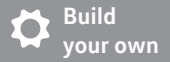
3 Volkswagen Commercial Vehicle Insurance is arranged by U K Insurance Business Solutions Limited and is underwritten by U K Insurance Limited. U K Insurance Business Solutions Limited is authorised and regulated by the Financial Conduct Authority and U K Insurance Limited is authorised by the Prudential Regulation Authority and regulated by the Financial Conduct Authority and the Prudential Regulation Authority. U K Insurance Business Solutions Limited. Registered office: Churchill Court, Westmoreland Road, Bromley, Kent BR1 1DP. Registered in England and Wales No. 05196274. Calls may be recorded.

4 Volkswagen Commercial Vehicle Insurance gap insurance is underwritten by MAPFRE Asistencia Compañía Internacional de Seguros y Reaseguros Sociedad Anonima authorised by Dirección General de Seguros y Fondos de Pensiones and subject to limited regulation by the Financial Conduct Authority and Prudential Regulation Authority, number 203041. Details about the extent of their regulation by the Financial Conduct Authority and Prudential Regulation Authority are available on request. MAPFRE Asistencia Compañía Internacional de Seguros y Reaseguros Sociedad Anonima is incorporated and registered in the Kingdom of Spain and registered as a foreign company in the United Kingdom with company number FC021974, acting through its UK branch with branch number BR008042 and whose principal office is at Alpha House, 5th Floor, 24A Lime Street, London EC3M 7HS. Volkswagen Commercial Vehicle Insurance gap insurance is administered by Abraxas Insurance Administration Services Limited, who is authorised and regulated by the Financial Conduct Authority with FCA number 308702 and who acts on behalf of the Insurer. Abraxas Insurance Administration Services Limited is registered in England and Wales with company number: 02928787 and whose registered office is at One Glass Wharf, Bristol BS2 0SX. Volkswagen Financial Services (UK) Limited is authorised and regulated by the Financial Conduct Authority (FCA). Authorisation details can be checked on the Financial Services register at www.fca.org.uk/firms/systems-reporting/register or call 0800 111 6768. Volkswagen Financial Services (UK) Limited is not part of the same corporate group as MAPFRE Asistencia Compañía Internacional de Seguros y Reaseguros Sociedad Anonima and Abraxas Insurance Administration Service Limited.

5 Business Vans Awards 2014 and 2015: Best Service Package for Van Owners.

6 Class 4 MOT only. This option is available to all new and used vehicles up to four years old or with less than 80,000 miles on the clock. Services must be used consecutively prior to vehicle reaching eight years old.

| | | | | | | | | | | | | | | | | |
|--------|-------------------------|-----------------------|--------------------|---------------------|-------------------------|------------------|------------------|--------------------------|--------|------------------------|------------------------|-----------------------|-------------|----------------|------------------|----------------------|
| Design | Interior & infotainment | Comfort & flexibility | Assistance systems | Engines & gearboxes | 4MOTION all-wheel drive | California Beach | California Ocean | Paint, upholstery & trim | Wheels | Audio & communications | Mobile online services | Technical information | Accessories | Build your own | Offers & finance | Service & warranties |
|--------|-------------------------|-----------------------|--------------------|---------------------|-------------------------|------------------|------------------|--------------------------|--------|------------------------|------------------------|-----------------------|-------------|----------------|------------------|----------------------|



Build
your own



Find a
Van Centre



Test drive



Offers &
Finance



Conversions



Comparator



The California

VWV18CALIF

This brochure supersedes all previous publications.

Issue: 14 September 2018

www.volkswagen-vans.co.uk

Please note: Screen technology does not allow exact reproduction of the paint and upholstery colours. Some of the vehicles shown are European specification and may be fitted with optional equipment or accessories that are available at extra cost, or do not reflect current specification. All data and specifications are in accordance with information available at the time of publication and are subject to change without notice. Vehicles not currently in UK stock and customer order vehicles may take a number of weeks for delivery. Certain combinations of vehicle specifications and factory-fitted options are not compatible and therefore all orders received are subject to confirmation. Models, factory fitted-options and paint and upholstery options are subject to availability. Please check details and availability with an authorised Volkswagen Van Centre at the time of ordering.