



PEUGEOT RIFTER & e-RIFTER

PRICES, EQUIPMENT AND TECHNICAL SPECIFICATIONS

Version 22 - From 6th January 2022

Model Year - 2022





Model shown is PEUGEOT Rifter GT with optional Sunset Copper paint

PEUGEOT Rifter models come with the following equipment as standard:

Body Style

- Standard (5 seats)
- Long (7 seats)

Safety and Security

- ABS (Anti-lock Braking System) with EBD (Electronic Braking Distribution) and EBA (Emergency Braking Assistance)
- Airbags: Adaptive driver and front passenger airbags (includes passenger airbag deactivation function)
- Airbags: Front and rear curtain airbags
- Automatic door locking when moving off
- Automatic hazard light activation upon heavy brake application
- Child locking functionality on rear doors
- Electronic code immobiliser
- ESP (Electronic Stability Program) with Hill Start Assist
- Safety Pack: Lane Keeping Assist, Speed limit recognition and recommendation and Active Safety Brake
- Front optimised safety headrests and rear retractable headrests (x3)
- Front three-point retractable seatbelts, with force limiters
- Front and rear disc brakes
- Gear Shift Indicator
- Headlights left on audible warning
- Isofix child seat fittings (x3) in the second row
- PEUGEOT Connect SOS & Assistance
- Puncture Repair Kit
- Seatbelt unfastened on the move audible and visual alert for front and rear seats
- Tyre pressure sensors

Interior Features

- Seating: 2 independent and removable sliding 3 row seat - Long versions only
- 2 heights parcel shelf - Standard versions only
- Retractable parcel shelf - Long versions only
- Upper glove compartment
- Full width front overhead storage shelf
- Driver and Passenger dashboard mounted cup holders

Comfort and Convenience

- Electric and heated door mirrors
- Electric power steering with reach- and rake-adjustable steering column
- Air Conditioning (Manual)
- Front interior light with reading spotlights (x2) and rear interior light with timer
- Front windscreen wiper with multi-speed setting
- Heated rear windscreen & wiper blade
- Multifunction trip computer
- Electric front windows
- PEUGEOT i-Cockpit®: compact steering wheel
- PEUGEOT i-Cockpit®: Head-up instrument panel
- Rear windscreen wiper triggered automatically in reverse gear
- Remote central locking (two remotes)
- Fixing rings (x4), in load area

In Car Entertainment

- Bluetooth® telephone facility
- DAB Radio (Digital Audio Broadcasting)
- USB socket
- 6-Speaker radio, MP3 compatible

Exterior Features

- Contrasting wheel arch trim
- Two sliding side doors

Exterior Lighting and Visibility

- Rear LED PEUGEOT signature 'Claw Effect' lights



Model shown is PEUGEOT Rifter GT with optional Sunset Copper paint



ALLURE Offering sharp design, versatility and practicality on every journey.
Available on Standard length only

ALLURE PREMIUM With added style and specification - enjoy the ultimate in understated luxury.

Allure specification +

Safety and Security

- Visibility Pack
- Safety Pack
- Safety Plus Pack
- PEUGEOT Connect SOS & Assistance

In Car Entertainment

- Bluetooth® telephone facility
- DAB Radio (Digital Audio Broadcasting)
- USB socket at the back
- Voice recognition (radio, navigation and telephony) linked to Mirror Screen® features

Comfort and Convenience

- Manual Air Conditioning
- Air-vents in 2nd row with USB socket
- Electric parking brake
- Parking sensors - rear

Exterior Features

- Black door mirrors
- Black front bumper with coloured inserts
- Radiator Grille: 3D stamped effect and chrome surround
- Body coloured front bumper
- Body colours door handles
- 16" Steel Wheel with 'Tongariro' wheel trim

Interior Features

- Picasso blue interior ambience
- Seating trim: 'Puma' cloth seat trim with blue over-stitch detail
- Seating: Height adjustable driver seat with adjustable lumbar support, under-seat storage and elbow rest
- Seating: Foldable passenger seat with under-seat storage and elbow rest
- Seating: Tray tables at the back of the front seats
- High console between front seats with storage compartment

Exterior Lighting and Visibility

- Front fog lights
- Halogen headlights
- LED daytime running lights built into the headlight unit

Comfort and Convenience

- Power folding door mirrors
- Dark tinted rear side and tailgate windows
- Electric rear windows
- Visio Park 1 (including rear parking sensors and 180° Colour Reversing camera)

In Car Entertainment

- PEUGEOT i-Cockpit®: 8.0" capacitive touchscreen
- 10" digital instrument cluster (**EV versions only**)
- 10" analogic LCD cluster (ICE versions only)

Exterior Features

- 16" 'Taranaki' Alloy Wheel
- Opening rear tailgate window

Interior Features

- Leather steering wheel
- Electrochromic rearview mirror





GT The best of all worlds, sports styling combined with outstanding levels of efficiency and specification.

Allure Premium specification +

Comfort and Convenience

- Automatic dual zone climate control
- Air-vents in 2nd row with fan strength command and USB Socket
- PEUGEOT Open & Go (keyless entry and push button start)

Exterior Features

- 17" 'Aoraki' Alloy Wheel
- Door sill protectors with gloss black inserts
- Radiator grille: 3D stamped effect and black surround
- 'GT' emblems (front wings and tailgate)
- Front and rear scuff plates
- Gloss Black roof bars (Aluminium on Long versions)

Interior Features

- 'Quente Brown' interior ambience
- Seating trim: 'Casual' cloth seat trim with overstitch detail
- Seating: 3 independent rear seat (2 row)



*Additional terms and conditions apply to connected services, including customer acceptance of location sharing prior to activation.

** available on Standard versions only

^Subject to subscription – after you have taken delivery of your vehicle, please subscribe on: <https://services-store.peugeot.co.uk/>

PEUGEOT i-Cockpit®

PEUGEOT i-Cockpit®:

Since launching in 2012, PEUGEOT i-Cockpit® has re-written the rule book for car interior architecture. The PEUGEOT i-Cockpit® philosophy centres around a driving environment that puts you in control, allowing a greater connection to the road. For PEUGEOT Rifter, the PEUGEOT i-Cockpit® helps to make driving more instinctive.

The PEUGEOT i-Cockpit®, comprises of the following key features:

Head-up instrument panel

Available as standard across the PEUGEOT Rifter range, the 3.5" raised instrument panel increases driver comfort and safety. As the panel is positioned higher, it is closer to the road and is more within the driver's field of vision. This can increase safety when compared to a conventional setup where the dials sit within the wheel, further from the road.

Sitting comfortably between the dials is an LCD screen complete with white graphics. Designed to relay key information to the driver the screen can display key data including, digital speed read out, satellite navigation directions and fuel economy data.

Compact multi-function steering wheel

Compact dimensions coupled with a re-designed shape enhance every journey in the PEUGEOT Rifter. Out on the road the compact dimensions increase the visibility of the car's instruments whilst in the corners it provides heightened responses and improved agility.

When it comes to round town or navigating car parks its compact size make light work of wheel winding to manoeuvre into a space. In terms of finish, all models have a steering wheel trimmed with Mistral full-grain leather and stitch detail.

8.0" capacitive colour touchscreen (Standard on Allure versions upwards)

With crystal clear graphics, the 8.0" capacitive touchscreen houses several key technological features on the PEUGEOT Rifter. Capacitive technology helps to give Smartphone levels of responsiveness. In keeping with the PEUGEOT i-Cockpit® theme, the touchscreen is angled towards the driver.

For greater accessibility the touchscreen includes access keys around the outside of the screen display, these enable direct access to the wealth of functionality available.

Features accessed via the touchscreen include:

- DAB Radio (Digital Audio Broadcasting)
- Mirror Screen®: (Apple CarPlay™ and Android Auto)
- 3D satellite navigation* (includes TomTom® Live updates)^ and PEUGEOT Connect and SOS*

*Depending on versions

^Additional terms and conditions apply to connected services, including customer acceptance of location sharing prior to activation.



Head-Up Instrument Panel



Compact Multifunction Steering Wheel



8.0" Capacitive Colour Touchscreen

New PEUGEOT e-Rifter

Live the Power of Choice

New PEUGEOT e-Rifter Front View



Technical

Usage

The new PEUGEOT e-Rifter offers 3 driving modes from the mode selector:

Eco (60 kW, 180 Nm): for optimising range

Normal (80 kW, 210 Nm): for everyday use

Power (100 kW, 260 Nm): for optimal performance

Two braking modes are available

Moderate

Emphasised (accessible from push "B", for "Brake" located on the gearbox control), for increased deceleration when the accelerator pedal is released

All versions of the new PEUGEOT e-Rifter are equipped with the Electric Parking Brake, freeing up floor space.

'e' Monogram Badging



Technology

Full Electric Vehicle

The PEUGEOT e-Rifter is available as a full electric vehicle. For even more versatility, both the Standard and Long lengths are available with the 50 kWh battery and allow a range of up to 172 miles (WLTP).

Charging Flexibility

The new PEUGEOT e-Rifter offers ultimate charging flexibility with two available on-board chargers and 2 modes available.

Two types of on-board chargers are available, a 7.4 kW single-phase charger as standard, or an 11 kW three-phase charger (available as an option).

Fast (AC) from a 7.4 kW wallbox full charge in 7.5 hours and from a 11 kW wallbox full charge in just 5 hours

Rapid (DC) 100kW public rapid charge terminals allow 0-80% charge in just 30 minutes.

Electric 50 kWh 136hp motor

The new PEUGEOT e-Rifter offers a lively and stimulating drive thanks to its full electric motor. You benefit from immediate reactivity with 260Nm of torque from 0mph. The silent engine offers a serene drive without vibration.

EMP2 Platform

Based on the **EMP2** (Efficient Modular Platform) multi-energy modular platform, the new PEUGEOT e-Rifter offers a full electric powertrain, with a maximum power of 100 kW and a maximum torque of 260 Nm.

Range

Up to 172 miles WLTP



New e-Rifter Charging Capability

The head up display evolves to share the necessary information the driver needs to correctly handle a full Electric vehicle:

A powermetre for displaying consumption (ECO, POW or CHARGE)

A consumption gauge for heating and air conditioning

A battery level gauge

A colour matrix to display energy flows, charge monitoring (current or delayed), on-board computer information and range

In the centre of the vehicle is the touchscreen from which you can access the "Electric" menu: "Flow" to view the live energy flow "Statistics" to display the consumption statistics "Charge" which allows you to programme a deferred charge

In addition, you can view the available charging points, the remaining range, or set the passenger compartment's heating preconditioning settings.

AVAS: Acoustic Vehicle Alerting System

Generates a sound when travelling at low speed, audit outside the vehicle for pedestrian safety (Standard on Electric versions).

EV Services

MyPEUGEOT App

Charge management: Control, plan, launch and check the vehicle's charge remotely

Climate preset: Remotely plan and control the heating or air conditioning in the interior of your car.

e-Coaching: Consumption logs and statistics

Charging Pass

PEUGEOT will provide access to certain UK public charging points through a free subscription for an introductory period.

Styling

The new PEUGEOT e-Rifter comes with distinctive and exclusive touch

A specific 'e' monogram badging as well as the name of the car at the rear.



New PEUGEOT e-Rifter Rear View

New e-Toggle selector



Electric Parking Brake



New 10" Digital Instrument Panel



Automatic Emergency Braking System (AEBS2)

Automatic Emergency Braking System (AEBS2)

An intelligent autonomous braking system designed to avoid a collision or limit its severity by reducing the vehicle's speed. The system is triggered if the driver does not react quickly enough, by activating the vehicle's brakes. A multifunction camera located at the top of the windscreen coupled with a bumper mounted radar are able to detect obstructions on the road. The system is able to detect vehicles that are moving in the same direction or are at a stop, together with pedestrians in the road.

Distance Alert System

Working in conjunction with the AEBS2 system, the distance alert function warns the driver if the vehicle risks a collision with the vehicle in front or a pedestrian in the road. Two levels of warning are available; the first 'Amber' warning provides a visual alert to the potential risk. In a more severe instance a 'Red' visual and audible alert indicate a collision is imminent and driver action is required, failure to act triggers the AEBS2 system.

Trailer Sway Mitigation System (TSM)

Trailer Sway Mitigation System

Optional tow bar includes Trailer Sway Mitigation System (TSM) .

TSM brings in an additional ESP® function which reduces the vibrations of the trailer or, if necessary, slows the vehicle. Vibrations are reduced via individual and alternated braking manoeuvres on the front wheels. In most cases, these manoeuvres are sufficient to completely eliminate the vibrations and thereby averting all danger. Should the vibrations be very strong, then the system reduces the engine torque and applies brakes on all four wheels to reduce the speed as quickly as possible.

TSM operates at speeds between 40 and 100 mph. TSM detects the trailer once the trailer's electric connector is hooked up to the towing vehicle.

Driver Attention Alert

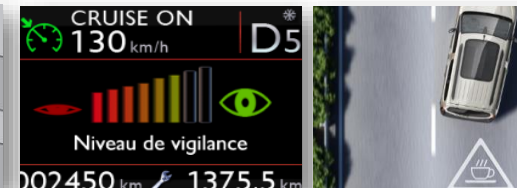
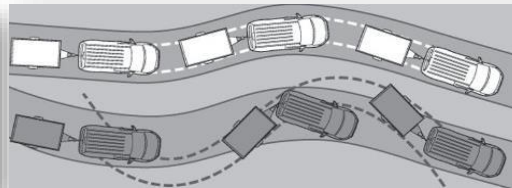
Driver Attention Alert 3 (DAA3)

It is important to take frequent breaks when travelling over long distances, to better guarantee your safety and the safety of those around you. PEUGEOT Rifter features a timed alert system that operates at speeds in excess of 40mph, after two hours of driving a message is displayed recommending that you take a break. In addition to a timed alert and controlled by a camera at the top of the windscreen designed to analyse the vehicles trajectory, DAA3 evaluates the vigilance of the driver at speeds of over 40mph. By identifying deviations relative to the road markings PEUGEOT Rifter is able to determine whether the vehicle's behaviour reflects a certain degree of driver drowsiness or inattention. If it is felt that the driver needs to take better care on the road a visual and audible alert will occur. If more than three instances occur, the driver will be advised to take a break.

Blind Spot Monitoring

Blind Spot Monitoring: (Standard on GT versions)

Now you can enjoy the feeling of having eyes in the back of your head. Using lateral ultrasound sensors to cover areas out of your field of vision, an LED illuminates in either side door mirror to alert to the presence of a car, lorry, motorbike or bicycle in your blind spot. The system works when overtaking a slower vehicle or when overtaken by a faster vehicle. This intelligent feature operates from speeds as low



Lane Keeping Technologies

Lane Keeping Technologies

PEUGEOT Rifter is always one step ahead. Featuring advanced lane keeping technology, the vehicle is able to identify lines on the road via a windscreen mounted camera. The technology operates in the following ways:

Lane Departure Warning a system that monitors continuous and discontinuous lines and warns the driver if a longitudinal lane marking on the ground is accidentally crossed. If steering deviation is detected, you are alerted by a flashing indicator on the digital instrument panel and an audible signal in the cabin.

Active Lane Keeping Assistance in addition to visually and audibly alerting the driver, PEUGEOT Rifter also features LKA. As soon as the system identifies a risk of accidentally crossing one of the marking lines detected on the ground, the steering is gradually corrected to keep the vehicle in lane, at speeds of over 40mph.



Image used for illustrative purposes only.

PEUGEOT Connect SOS & Assistance

PEUGEOT Connect SOS & Assistance (Standard)

A vehicle locating communication unit, this feature can be used manually (dedicated SOS button on the console) or automatically (if pyrotechnic devices are deployed). It locates the vehicle precisely and triggers the sending of the appropriate emergency services for a rapid response.

PEUGEOT are the pioneers of this technology, since launching in 2003. The system is subscription free with no additional charges and uses a GPS module and SIM card (built in to the system).



Adaptive Cruise Control (ACC Stop / ACC30)

Adaptive Cruise Control with Stop (ACC Stop)

Optional dependent on version. Controlled via a radar mounted at the front of the vehicle with a range of up to 150 metres, the ACC Stop system provides two key functions:

- Automatic maintenance of the vehicle's speed, at the value set by the driver.
- Automatic maintenance of a set distance between PEUGEOT Rifter and the vehicle in front, slowing the vehicle to a stop if required.

The system detects a vehicle driving in front in the same direction and can automatically adapt the vehicle's speed to that of the vehicle in front. This occurs using engine braking and the braking system (in which case the brake lights are lit) to maintain a constant distance.

If the vehicle in front has slowed to a stop, PEUGEOT Rifter will also be brought to a stop by the ACC Stop system, if after this no response is received from the driver, the electric parking brake is automatically applied.

Adaptive Cruise Control with Speed Reduction to 20mph (ACC 30)

Optional dependent on version. ACC30 works in the same way as ACC Stop to regulate speed and distance. ACC30 can slow PEUGEOT Rifter to a speed of 18mph, at which point driver input is required to prevent stalling.

*Not available on 1.5L BlueHDI 100



Image used for illustrative purposes only.

Speed Limit Recognition

Speed Limit Recognition and Recommendation

Linked to the safety and safety plus option packs. Using the windscreen mounted camera, PEUGEOT Rifter features speed limit sign recognition, leaving you in no doubt over the speed limit. Upon detecting a speed limit sign this information is read by the camera and displayed in colour on the head-up instrument panel.

In addition to been made aware of the speed the driver also has the option to adapt their speed to the speed limit on the particular road via the vehicles cruise control stalk. The vehicle will then adjust its speed accordingly.



Image used for illustrative purposes only.

PEUGEOT Smartbeam Assistance

PEUGEOT Smartbeam Assistance

Optional dependent on version

Linked to the safety plus option packs, PEUGEOT Smartbeam Assistance gives you one less thing to think about when driving at night. Controlled via a windscreen mounted camera, the system continuously analyses driving conditions, for instance the proximity of other vehicles.

PEUGEOT Smartbeam Assistance automatically switches headlights to full beam when conditions allow, allowing you to tap into the full potential of the halogen headlights.

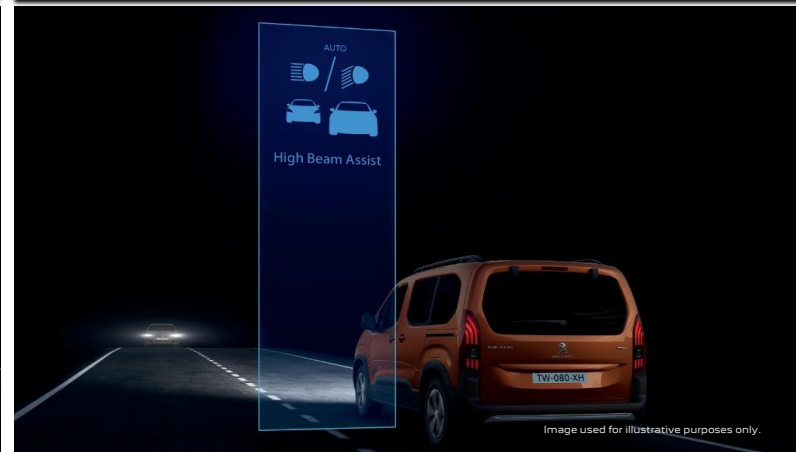


Image used for illustrative purposes only.



Connected 3D Navigation*

Satellite Navigation: (Optional)

Linked to the 8.0" capacitive colour touchscreen, the system includes European mapping, 3D city mapping and voice recognition. The system also includes a 3 year subscription^ to PEUGEOT Connect allowing a connection to online navigation services (in partnership with TomTom®). Key features of PEUGEOT Connect include:

- **TomTom® Traffic:** Real-time updates on traffic conditions (traffic jams, road works) and suggested alternative routes.
- **Local Weather:** Displays forecasted weather conditions along the route.
- **Fuel Stations:** Displays nearby fuel stations and pricing.
- **Local search:** Access address and contact detail information for a point of interest*

*Additional terms and conditions apply to connected services, including customer acceptance of location sharing prior to activation.
^Subject to subscription – after you have taken delivery of your vehicle, please subscribe on: <https://services-store.peugeot.co.uk/>

Mirror Screen®

Mirror Screen®: (Standard)

Allows the mirroring of a compatible smartphone screen to access the key functionality on the handset. Once paired functions are displayed on the 8.0" capacitive colour touchscreen. System features vary by provider/phone and can include navigation, text display, text reading, media functionality voice control. Mirror Screen® uses the following systems:

- **Apple CarPlay™**
- **Android Auto**

*For further information on Apple CarPlay™ and smartphone compatibility please visit: <https://www.apple.com/ios/carplay/>
*For information on Android Auto and smartphone compatibility please visit: <https://www.android.com/aut/>



VisioPark 1

180° Colour Reversing Camera: (Standard from Allure Premium)

A camera located on the rear of the vehicle is linked to the 8.0" capacitive colour touchscreen. Offering increased visibility when reversing, with a selection of views to choose from, you'll never look back:

Rear Grid View: a clear view of obstructions to the rear of the vehicle coupled with grid lines oriented to the positioning of the steering wheel, offering perspective for distances of one and two metres respectively from the rear bumper.

180° View: Divides the screen into three zones, offering a clear view of vehicles approaching from the side. Perfect for safely reversing out of parking spaces.

Overhead View: the camera records the surroundings during a manoeuvre to reconstitute an overhead rear view of the vehicle in its immediate environment, making it easier to manoeuvre between



Park Assist

Park Assist pack: Includes VisioPark1 (Optional dependent on version)

Park Assist: This system provides active assistance for parking by detecting a parking space and then operating the steering system to park in this space.

During a parking manoeuvre the vehicle operates the steering whilst the driver manages the pedals and gearbox control. During the entry and exit from a space the system provides visual and audible information to improve the safety of the manoeuvre. The system works with both parallel and bay parking.



PEUGEOT Open and Go (Keyless Entry)

PEUGEOT Open and Go (Standard on GT versions)

Using sensors mounted in the front door handles, PEUGEOT Rifter can be opened without removing the key from your pocket or bag, simply grab the handle and the vehicle will automatically unlock.

Once inside a simple press of the stop start button is all that is required.



'Magic Wash' System

'Magic Wash' System:

Mounted in the front windscreen wipers, PEUGEOT Rifter models benefit from our innovative windscreen wash system, designed to more effectively distribute water and reduce wastage. Using nozzles located above the wiper blades, fluid is distributed as the wiper sweeps the windscreen. This avoids the 'temporary blindness' of more conventional bonnet mounted systems between fluid release and wiper sweeping, improving visibility.



Advanced Grip Control®

Advanced Grip Control®: Optional on Petrol and Diesel versions, N/A on Electric versions

To allow you to take on a variety of weather and terrains, PEUGEOT Rifter can be specified with Advanced Grip Control®, a system designed to optimise traction in low-grip conditions. It adapts to the terrain by acting on the front wheels, in doing so this saves the weight normally associated with a more conventional four wheel drive system. Advanced Grip Control® offers the driver a choice of five driving modes, accessed via a rotary dial on the centre console. Designed to work in conjunction with all engines and transmissions, Advanced Grip Control® is optional across the PEUGEOT Rifter range. In addition the system also incorporates a new Hill Assist Descent Control (HADDC) for the first time, this optimises vehicle control on steep



ESP Off

Enables the disconnecting of the dynamic stability control (ESP) and traction aids (ASR/Grip Control), up to 31mph (50 km/h) to give the driver complete autonomy. These systems are automatically reconnected above this speed for safety.



Normal Mode

Calibrated system with a low, fixed level of wheel spin based on a compromise between the different types of grip generally encountered in normal day to day driving.



Snow Mode

The system adapts to the grip conditions encountered by each wheel when starting. When advancing, the system optimises wheel spin to guarantee the best acceleration based on the available traction. Recommended in cases of deep snow and steep inclines.



Mud Mode

This mode authorises a lot of wheel spin at start-up for the wheel with the least grip, this removes mud and re-establishes traction. Meanwhile, the wheel with the most grip is provided with the most torque possible.



Sand Mode

This mode allows a small amount of simultaneous wheel spin on the two drive wheels, enabling the vehicle to advance and reduce the risk of sinking.



Image used for illustrative purposes only.

Advanced Grip Control® Rotary Dial

Advanced Grip Control® Driving Modes

Hill Assist Descent Control (HADDC) (Optional, included with Advanced Grip Control®)

Designed to assist with the descent of steep slopes, Hill Assist Descent Control is incorporated as part of the Advanced Grip Control® system. When descending a slope with a gradient of more than 5% and with vehicle speed below 19mph the system will work to reduce the risk of slipping. During a descent the system maintains speed and brake control, allowing the driver to concentrate on the vehicles path of travel during the manoeuvre.

A clever feature incorporated within the Hill Assist Descent Control system is our unique 'Clutch Mode' security function. Selecting this function for very steep slopes regulates the vehicle speed to 2mph (3km/h), this allows the vehicle to creep down a steep slope in a completely controlled manner.



Image used for illustrative purposes only.



Hill Assist Descent Control (HADDC) System



8 - Speed Efficient Automatic Transmission (EAT8)

8 - Speed Efficient Automatic Transmission (EAT8)

Our latest gearbox innovation in partnership with Aisin, featuring 8 gears for optimum driving pleasure, EAT8 offers:

- Up to a 5% reduction in fuel consumption as a result of optimised gearing
- Hyper progressive and linear with seamless changes for conquering the open road
- Optimised safety, gearbox automatically reverts to park 'P' upon switching off vehicle ignition.
- Reduced weight, through carefully selected materials, EAT8 offers weight saving of 6kg vs. EAT6

EAT8 is also controlled via the stylish new electric impulse control, beautifully designed, the compact rotary selector perfectly complements the stylish design of the PEUGEOT i-Cockpit®.

EAT8 can also be controlled via the steering column mounted paddles.



e-Toggle Drive Selector

e-Toggle Drive Selector

Standard on Electric versions only

The new e-Toggle Drive Selector has a stylish, ergonomic design which complements the PEUGEOT i-Cockpit®. Lined to the Electric versions, operation is both intuitive and smooth.

Image of the e-Toggle Drive Selector for illustration purposes only.



BlueHDi Diesel Engine Technology

BlueHDi Diesel Engine Technology

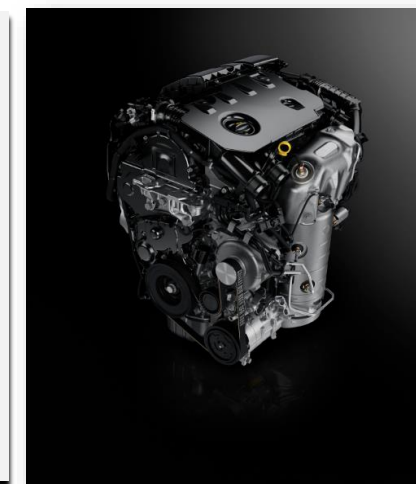
BlueHDi is the name given to PEUGEOT's latest generation of diesel engines. The result of a world-famous diesel heritage plus innovation and engineering excellence developed on the race track of Le Mans, BlueHDi complies with Euro 6 emission standards, to deliver exceptional fuel economy and CO₂ emissions alongside a driving experience rich in power and performance.

This expertise has produced the 1.5 BlueHDi 130 S65, offering the very latest in diesel engine technology to bring a host of innovations and benefits

- 1.5L BlueHDi 130 S65

The BlueHDi 130 offers a host of innovations and benefits:

- Stronger performance from a smaller engine
- Improvements in fuel consumption
- Improved practicality, with dedicated AdBlue® filler under the fuel cap.



Standard or Long version

Standard or Long

Built on PEUGEOT's modular EMP2 platform, the PEUGEOT Rifter provides the fundamentals of practical, versatile design and is able to excel in any situation.

Rifter comes with a 5-seat configuration as a Standard version (4.40m) and a 7-seat configuration as a Long version (4.75m).

Rifter comes with 3 individual folding rear seats** and the clever adaptability and modularity of this leisure activity vehicle. With the passenger seat folded* you can fit objects up to 3m long on the Long version.

With its clever adaptability, the PEUGEOT Rifter is never short of space and loads up quickly and efficiently.

*depending on versions, Standard length only.
**available on Standard versions only



Intelligent Storage Solution

Intelligent Storage Solutions

The Rifter's optimised architecture means that it boasts one of the most capacious offerings on the market.

According to version, the boot of the Rifter features a loading capacity of 775 litres under shelf, up to 4,000 litres under ceiling storage, and an additional enclosed space capable of storing up to 186 litres.

The PEUGEOT Rifter features numerous and ergonomic storage compartments accessible for all passengers, some of which are detailed below:

- Under-seat storage on the driver seat*,
- Upper glove compartment,
- High console between front seats with storage compartment*,
- Row 2 underfloor storage compartments**
- Zenith® Roof*

* optional depending on versions
** optional (linked to the Family Pack)



Zenith® Roof

Zenith® Roof: Optional on Standard length only

The wide, one-section panoramic glass roof, can be covered with an electric blind.

The floating, translucent arch, including storage compartments, floods the passenger compartment with light. The floating arch has a capacity of up to 14 litres and is edged with LED ambience lighting.

The Zenith Roof® has many accessible storage areas giving a total 92 litre capacity: in the roof storage compartment, in the arch and in the roof case which can be accessed from the rear seats and/or the boot.

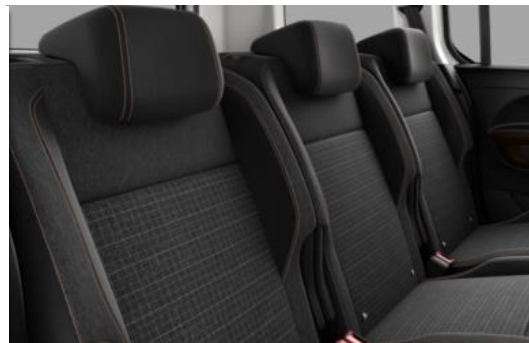


Fold Flat Rear Seats

Fold Flat Rear Seats: Standard on GT versions

Three individual seats* allow you to create a flat floor for easy loading. The flat floor can also be created with the 2/3-1/3 bench seat or individual seats.

* available on Standard versions only



Opening Rear Tailgate Window

Opening rear tailgate window: Standard on Allure Premium & GT versions

For increased modularity and ease of access, the opening rear tailgate window means you can gain entry to the roof case (on M versions) or your boot.

With the 2 height position parcel shelf you can load your groceries with no need to open the tailgate. The parcel shelf can support up to 25kg.



PEUGEOT Rifter Range: Price List

		ENGINE	FUEL	RDE2 COMPLIANT	HP	TITRE CODE (DIALOG DESCRIPTION)	CO ₂ g/km	BASIC MRRP	VAT (£)	TOTAL MRRP	OTR COSTS	ON THE ROAD MRRP	P11D VALUE (£)	2021/2022 BIK %
Standard (5 seats)	Allure	1.2L PureTech 110 S6S 6-speed manual Stock Only	Petrol	Yes	110	1PK9AFTNNKT0A040 (ALL STD PT110)	149	19,429.17	3,885.83	23,315	1,025	24,340	24,065	33
		1.5L BlueHDi 100 S6S 6-speed manual Stock Only	Diesel	Yes	102	1PK9AFTMNKT0A040 (ALL STD BHD1100)	137	19,750.00	3,950.00	23,700	1,025	24,725	24,450	31
	Allure Premium	1.2L PureTech 130 EAT8 S6S 8-speed Efficient Automatic Transmission Stock Only	Petrol	Yes	131	1PK9AFUNP1T0A040 (ALLP STD PT130A)	156	21,733.33	4,346.67	26,080	1,360	27,440	26,830	35
		1.5L BlueHDi 100 S6S 6-speed manual Stock Only	Diesel	Yes	102	1PK9AFUMNKT0A040 (ALLP STD BHD1100)	138	21,008.33	4,201.67	25,210	1,025	26,235	25,960	31
		Electric 50kWh 136^	Electric	Yes	136	1PK9AFUESFT0A040 (RIFT ALLPK ELECT)	0	26,754.17	5,350.83	32,105	805	32,910	32,855	1
	GT	1.2L PureTech 130 EAT8 S6S 8-speed Efficient Automatic Transmission Stock Only	Petrol	Yes	131	1PK9AFWNP1T0A040 (GT STD PT130A)	157	23,466.67	4,693.33	28,160	1,360	29,520	28,910	35
		1.5L BlueHDi 130 S6S 6-speed manual Stock Only	Diesel	Yes	131	1PK9AFWMKKT0A040 (GT STD BHD1130)	140	22,370.83	4,474.17	26,845	1,025	27,870	27,595	32
		Electric 50kWh 136^	Electric	Yes	136	1PK9AFWESFT0A040 (RIFT E-50KWH STD GT)	0	28,487.50	5,697.50	34,185	805	34,990	34,935	1

CO2 figures, P11D values, BIK% and MRRP pricing shown above are for a standard vehicle without any additional optional equipment. CO2 figures are used to calculate Vehicle Excise Duty (VED) for the first registration of the vehicle and BIK%. The addition of optional extras could increase the certified CO2 emission output. This in turn may affect the amount of VED payable upon registration, and, for company car drivers, the amount of Benefit in Kind (BIK) tax payable.

Plug In Car Grant (PICG) from the government is not available to vehicles priced in excess of £32,000 since 15th December 2021.

For further information on CO2 and pricing for vehicles with optional equipment, please visit www.peugeot.co.uk and configure your chosen vehicle with your preferred options.

Figures shown are for comparison purposes and should only be compared to the fuel consumption and CO2 values of other cars tested to the same technical standard.

The fuel consumption achieved, and CO2 produced, in real world conditions will depend upon a number of factors including, but not limited to: the accessories fitted (pre and post registration); variations in weather; driving styles and vehicle load. The WLTP (Worldwide Harmonised Light Vehicles Test Procedure) is used to measure fuel consumption and CO2 figures.**'On the Road' MRRP includes registration plates and delivery to retailer (including VAT), 12 months' Vehicle Excise Duty and new vehicle registration fee of £55. Excludes fuel and insurance.

All information and prices correct at time of publication, but are subject to change at any time without prior notice (which may occur as a result of matters including, but not limited to, any changes in legislation and/or any changes by the government).

PEUGEOT Rifter Range: Price List

		ENGINE	FUEL	RDE2 COMPLIANT	HP	TITRE CODE (DIALOG DESCRIPTION)	CO ₂ g/km	BASIC MRRP	VAT (£)	TOTAL MRRP	OTR COSTS	ON THE ROAD MRRP	P11D VALUE (£)	2021/2022 BIK %
Long (7 seats)	Allure Premium	1.2L PureTech 130 EAT8 S&S 8-speed Efficient Automatic Transmission Stock Only	Petrol	Yes	131	1PK9CFUNP1T0A040 (ALLP LONG PT130A)	160	23,400.00	4,680.00	28,080	1,360	29,440	28,830	36
		1.5L BlueHdI 100 S&S 6-speed manual Stock Only	Diesel	Yes	102	1PK9CFUMNKT0A040 (ALLP LONG BHD1100)	142	22,675.00	4,535.00	27,210	1,025	28,235	27,960	32
		Electric 50kWh 136^	Electric	Yes	136	1PK9CLUESFT0A040 (RIFT E-50KWH LG ALLP)	0	28,420.83	5,684.17	34,105	805	34,910	34,855	1
	GT	1.2L PureTech 130 EAT8 S&S 8-speed Efficient Automatic Transmission Stock Only	Petrol	Yes	131	1PK9CFWNP1T0A040 (GT LONG PT130A)	161	25,133.33	5,026.67	30,160	1,360	31,520	30,910	36
		1.5L BlueHdI 130 S&S 6-speed manual Stock Only	Diesel	Yes	131	1PK9CFWMKKT0A040 (GT LONG BHD1130)	144	24,037.50	4,807.50	28,845	1,025	29,870	29,595	32

CO2 figures, P11D values, BIK% and MRRP pricing shown above are for a standard vehicle without any additional optional equipment. CO2 figures are used to calculate Vehicle Excise Duty (VED) for the first registration of the vehicle and BIK%. The addition of optional extras could increase the certified CO2 emission output. This in turn may affect the amount of VED payable upon registration, and, for company car drivers, the amount of Benefit in Kind (BIK) tax payable.

Plug In Car Grant (PICG) from the government is not available to vehicles priced in excess of £32,000 since 15th December 2021.

For further information on CO2 and pricing for vehicles with optional equipment, please visit www.peugeot.co.uk and configure your chosen vehicle with your preferred options.

Figures shown are for comparison purposes and should only be compared to the fuel consumption and CO2 values of other cars tested to the same technical standard.

The fuel consumption achieved, and CO2 produced, in real world conditions will depend upon a number of factors including, but not limited to: the accessories fitted (pre and post registration); variations in weather; driving styles and vehicle load. The WLTP (Worldwide Harmonised Light Vehicles Test Procedure) is used to measure fuel consumption and CO2 figures.**'On the Road' MRRP includes registration plates and delivery to retailer (including VAT), 12 months' Vehicle Excise Duty and new vehicle registration fee of £55. Excludes fuel and insurance.

All information and prices correct at time of publication, but are subject to change at any time without prior notice (which may occur as a result of matters including, but not limited to, any changes in legislation and/or any changes by the government).

For further information visit our website at peugeot.co.uk or contact your local PEUGEOT Retailer.

PEUGEOT RIFTER: options

Standard	●						
Optional	○						
Not available	-						
	OPTION CODE	ALLURE	ALLURE PREMIUM	GT	Basic RRP £ Excluding VAT	VAT @ 20%	Total RRP £ Including VAT
PAINT							
Metallic paint	M0...	○	○	○	479.17	95.83	575.00
SAFETY AND SECURITY							
Advanced Grip Control® with Hill Assist Descent Control and all-season tyres onto 16" alloy wheels N/A on EV versions	UF02	○	○	○	166.67	33.33	200.00
Drive Assist Pack: Adaptive Cruise Control (ACC) with Stop function N/A on EV versions	ZV80	-	○	○	166.67	33.33	200.00
COMFORT AND CONVENIENCE							
Automatic dual zone climate control (brings fan strength command in row 2)	RE07	○	○	●	208.33	41.67	250.00
Visio Park 1 (including rear parking sensors and 180° Colour Reversing camera)	QK02	○	●	●	125.00	25.00	150.00
Park Assist pack: Visio Park 1 with Blind Spot Detection, Front Parking Sensors and Park Assist	N402	-	○	○	583.33	116.67	700.00
PEUGEOT Open and Go (keyless entry and push button start)	YD01	○	○	●	208.33	41.67	250.00
Rear restraining net	NM01	-	○	○	83.33	16.67	100.00
INTERIOR FEATURES							
Leather Steering Wheel with integrated controls	VH04 / VH49	○	●	●	83.33	16.67	100.00
Zenith® Roof - Cielo panoramic roof with electric interior blind, background lighting and storage, Rear storage roof case accessible from the 2nd row and the trunk Standard length versions only	OU01	-	○	○	625.00	125.00	750.00
Seating: 3 independent rear seat (2 row)	AL05	-	○	●	333.33	66.67	400.00
Family Pack: additional child rear view mirror, blinds on rear side windows and underfloor storage compartments in row 2 N/A on EV versions	XN01	-	○	○	83.33	16.67	100.00
IN CAR ENTERTAINMENT							
Connected 3D Navigation*: includes PEUGEOT Connect SOS and Assistance and SpeedCam / Danger Zones (3 year subscription)*^	WL2K	○	○	○	541.67	108.33	650.00
TomTom® Live services subscription – 3 years (linked to Connected 3D Navigation)*	N/A	○	○	○	0.00	0.00	0.00
TomTom® Live services subscription – 1 year extension (4 years total)*^	N/A	○	○	○	45.83	9.17	55.00
TomTom® Live services subscription – 3 year extension (6 years total)*^	N/A	○	○	○	104.17	20.83	125.00
SpeedCam / Danger Zones subscription – 1 year*^	N/A	○	○	○	57.50	11.50	69.00
SpeedCam / Danger Zones subscription – 3 years*^	N/A	○	○	○	115.83	23.17	139.00
220V socket	ES11	○	○	○	83.33	16.67	100.00
11kW Tri-phase On Board Charger Electric versions only	LZ04	-	○	○	250.00	50.00	300.00
EXTERIOR FEATURES							
Tow bar pre-conditioning Standard tow hook support with wires, box and brackets	AQ11	-	○	○	208.33	41.67	250.00

*Additional terms and conditions apply to connected services, including customer acceptance of location sharing prior to activation.

^Subject to subscription – after you have taken delivery of your vehicle, please subscribe on: <https://services-store.peugeot.co.uk/>

For further information visit our website at peugeot.co.uk or contact your local PEUGEOT Retailer.

PEUGEOT RIFTER: Equipment

Standard	●		
Optional	○		
	-		
		ALLURE	ALLURE PREMIUM
			GT

BODYSTYLE

Standard (5 seats)	●	●	●
Long (7 seats)	●	●	●

SAFETY AND SECURITY

ABS (Anti-lock Braking System) with EBD (Electronic Braking Distribution) and EBA (Emergency Braking Assistance)	●	●	●
Airbags: Adaptive driver and front passenger airbags (includes passenger airbag deactivation function)	●	●	●
Airbags: Front and rear curtain airbags	●	●	●
Automatic door locking when moving off	●	●	●
Automatic hazard light activation upon heavy brake application	●	●	●
Child locking functionality on rear doors	●	●	●
Electronic code immobiliser	●	●	●
ESP (Electronic Stability Program) with Hill start assist	●	●	●
Front optimised safety headrests and rear retractable headrests (x3), height-adjustable.	●	●	●
Front three-point retractable seatbelts, with force limiters	●	●	●
Front and rear disc brakes	●	●	●
Gear Shift Indicator (N/A on Electric versions)	●	●	●
Headlights left on audible warning	●	●	●
Isofix child seat fittings (x3) in the second row	●	●	●
PEUGEOT Connect SOS and Assistance	●	●	●
Safety Pack: Lane Keeping Assist, Speed Limit Recognition and Recommendation and Active Safety Brake	●	●	●
Safety Plus Pack : Safety Pack, Traffic sign recognition, Driver attention monitoring system, Low / High beam function	●	●	●
Visibility Pack: Automatic Front flat blade wiper with magic wash system and turn on headlamp (include steering wheel with integrated command)	●	●	●
Puncture Repair Kit	●	●	●
Tyre pressure sensors	●	●	●

COMFORT AND CONVENIENCE

Air conditioning (manual)	●	●	-
Automatic dual zone climate control	○	○	●
Air-vents in 2nd row with fan strength command and USB socket	●	●	●
Dark tinted opening rear side and tailgate windows	-	●	●
Electric and heated door mirrors	●	●	●
Electric parking brake	●	●	●
Electric power steering with reach- and rake-adjustable steering column	●	●	●
Front interior light with reading spotlights (x2) and rear interior light with timer	●	●	●
Front windscreen wiper with multi-speed setting	●	●	●

ELECTRIC VEHICLE SPECIFIC

Electric Charging Cable: Mode 3 Type 2 for Wallbox	-	●	●
7.4KW single-phase On Board Charger	-	●	●
AVAS: Acoustic Vehicle Alerting System. Generates a sound when travelling at low speed, audible outside the vehicle for pedestrian safety	-	●	●
Remote temperature pre-conditioning (requires e-Remote Control service subscription - free of charge)	-	●	●

	ALLURE	ALLURE PREMIUM	GT
--	--------	----------------	----

COMFORT AND CONVENIENCE

Tailgate with heated rear windscreen & wiper blade	●	●	●
Multifunction trip computer	●	●	●
Electric front windows	●	●	●
Electric rear windows	-	●	●
Parking sensors - rear	●	-	-
Visio Park 1: Rear parking sensors and 180° Colour Reversing camera	○	●	●
Visio Park 1 with Blind Spot Detection, Front Parking Sensors and Park Assist	-	○	○
PEUGEOT i-Cockpit®: compact steering wheel	●	●	●
PEUGEOT i-Cockpit®: Head-up instrument panel	●	●	●
Analogic instrument cluster (ICE versions only)	-	●	●
10" digital instrument cluster (EV versions only)	-	●	●
PEUGEOT Open and Go (keyless entry and push button start)	○	○	●
Power folding door mirrors	-	●	●
Door mirrors will be black	-	●	●
Rear windscreen wiper triggered automatically in reverse gear	●	●	●
Remote central locking (two remotes)	●	●	●
Fixing rings (x4) in load area	●	●	●
Rear restraining net	-	○	○

INTERIOR FEATURES

Seating trim: 'Puma' cloth seat trim with blue overstitch detail	●	●	-
Seating trim: 'Casual' cloth seat trim with overstitch detail	-	-	●
Picasso blue interior ambience	●	●	-
Quente Brown interior ambience	-	-	●
Electrochromic rearview mirror	-	●	●
Leather Steering Wheel with integrated controls	○	●	●
Seating: Height adjustable driver seat with adjustable lumbar support, under-seat storage and elbow rest	●	●	●
Seating: Foldable passenger seat with under-seat storage and elbow rest	●	●	●
Seating: Tray tables at the back of the front seats	●	●	●
Seating: 1/3 – 2/3 folding rear seat (2 row)	●	-	-
Seating: 3 independent rear seat (2 row)	-	○	●
Seating: 2 independent and removable sliding 3 row seat Standard on Long versions only	●	●	●
2 heights parcel shelf Standard versions only	●	●	●
Retractable parcel shelf Long versions only	●	●	●
Upper glove compartment	●	●	●
Driver and Passenger dashboard mounted cup holders	●	●	●
High console between front seats with storage compartment	●	●	●
Overhead storage	●	●	●

PEUGEOT RIFTER: Equipment

Standard	●
Optional	○
	-

ALLURE	ALLURE PREMIUM	GT
--------	----------------	----

IN CAR ENTERTAINMENT

	ALLURE	ALLURE PREMIUM	GT
Bluetooth® telephone facility	●	●	●
DAB Radio (Digital Audio Broadcasting)	●	●	●
8.0" capacitive colour touchscreen with Mirror Screen®: (Apple CarPlay™, Android Auto)	●	●	●
USB socket	●	●	●
USB socket at the back	●	●	●
Voice recognition (radio, navigation and telephony features)	●	●	●
6-Speaker radio, MP3 compatible	●	●	●
12V socket	●	●	●

EXTERIOR FEATURES

	ALLURE	ALLURE PREMIUM	GT
Black front bumper	●	●	-
Black front bumper with chrome strip grille	-	-	●
Contrasting wheel arch trim	●	●	●
Door sill protectors	●	●	-
Door sill protectors with gloss black inserts	-	-	●
Radiator grille: 3D stamped effect and chrome surround	●	●	-
Radiator grille: 3D stamped effect and black surround	-	-	●
Gloss black door mirrors	●	●	●
Body-colour exterior door handles	●	●	●
'GT' emblems (front wings and tailgate)	-	-	●
Front and rear scuff plates	●	●	-
Aluminium roof bars	●	●	-
Gloss Black roof bars	-	-	●
16" Steel Wheel with 'Tongariro' wheel trim	●	-	-
16" 'Taranaki' Alloy Wheel	-	●	-
17" 'Aoraki' Alloy Wheel	-	-	●
Two glazed sliding side doors	●	●	●

LIGHTING AND VISIBILITY

	ALLURE	ALLURE PREMIUM	GT
Halogen headlights	●	●	●
LED daytime running lights built into the headlight unit	●	●	●
Rear LED PEUGEOT signature 'Claw Effect' lights	●	●	●
Front fog lights	●	●	●
Visibility pack: automatic lights and automatic MagicWash® windscreen wipers	●	●	●
Visibility pack: electrochromic rear view mirror (auto dimming)	●	●	●

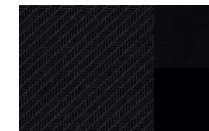
*Additional terms and conditions apply to connected services, including customer acceptance of location sharing prior to activation.

^Subject to subscription – after you have taken delivery of your vehicle, please subscribe on: <https://services-store.peugeot.co.uk/>



PEUGEOT Rifter: Trims and Wheels

		ALLURE	ALLURE PREMIUM	GT
Upholstery		'Puma' cloth seat trim with blue overstitch detail	'Puma' cloth seat trim with blue overstitch detail	'Casual' cloth seat trim with overstitch detail
Trim Code		OCFY	OCFY	ODFY
SOLID PAINT				
Bianca White	P0WP	●	●	●
METALLIC PAINT				
Nera Black	M09V	○	○	○
Cumulus Grey	M0F4	○	○	○
Nimbus Grey	M0VL	○	○	○
Pearl Sand	M0EU	○	○	○
Deep Blue	M0JG	○	○	○
Sunset Copper	M0LG	○	○	○



'Puma' cloth seat trim with blue overstitch detail



'Casual' cloth seat trim with overstitch detail



Bianca White



Nera Black



Cumulus Grey



Pearl Sand



Nimbus Grey



Sunset Copper



Deep Blue

PEUGEOT Rifter Range: Wheels

16" Steel Wheel with 'Tongariro' wheel trim	DZJN + EHKV	●	-	-
16" 'Taranaki' Alloy wheel	DZSB	-	●	-
17" 'Aoraki' Alloy wheel	DZSE	-	-	●



16" Steel Wheel with 'Tongariro' wheel trim



16" 'Taranaki' Alloy wheel



17" 'Aoraki' Alloy wheel

PEUGEOT Rifter Standard: Technical Specification

		Petrol		Diesel		
		1.2L PureTech 110 S6S 6-speed manual	1.2L PureTech 130 EAT8 S6S 8-speed Efficient Automatic Transmission	1.5L BlueHDi 100 S6S 6-speed manual	1.5L BlueHDi 130 S6S 6-speed manual	
DRIVETRAIN	Fuel type	Petrol	Petrol	Diesel	Diesel	
	Stop and Start functionality	•	•	•	•	
	Cubic capacity (cc)	1199	1199	1499	1499	
	Maximum power hp (Kw)	110 (81) @ 5500	131 (96) @ 5500	102 (75) @ 3750	131 (96) @ 3750	
	Maximum torque lb/ft (Nm)	151 (205) @ 1750	170 (230) @ 1750	184 (250) @ 1750	221 (300) @ 1750	
	6 speed manual	•	-	•	•	
	8 speed automatic	-	•	-	-	
BRAKES	Front and rear discs	•	•	•	•	
SUSPENSIONS AND TYRES	Front suspension	Pseudo MacPherson				
	Rear suspension	De-formable Crossmember				
	Size - 16" tyres	215/65 R16 95U - 6.50J16 ET47				
	Size - 17" tyres	215/60 R17 95U - 7.00J17 ET44				
FUEL	Capacity (litres)	60		51		
REGULATED EMISSIONS	Carbon monoxide (mg/km)	443.5	587.5	51.7	52.8	
	Total hydrocarbons (mg/km)	21.9	24	-	-	
	Nitrogen Oxides (mg/km)	51.8	35.2	51.1	49.2	
	Total Hydrocarbons + Nitrogen Oxides (mg/km)	-	-	54.2	53	
	Particulate Matter (mg/km)	1.42	0.89	0.38	0.48	
PERFORMANCE	Maximum speed (mph)	108	124	107	116	
	Acceleration 0-62 mph driver only (sec)	11.7	10.9	14.0	10.4	
FUEL CONSUMPTION INFORMATION	WLTP V. Low / V. High Fuel Consumption	Fuel Consumption: Low MPG (litres/100km).^	39.3 - 36.4 (7.2 - 7.8)	35.9 - 32.9 (7.9 - 8.6)	55.3 - 48.2 (5.1 - 5.9)	56.2 - 48.5 (5.0 - 5.8)
		Fuel Consumption: Medium MPG (litres/100km).^.	48.3 - 40.9 (5.8 - 6.9)	45.6 - 38.6 (6.2 - 7.3)	62.8 - 51.7 (4.5 - 5.5)	61.7 - 51.8 (4.6 - 5.5)
		Fuel Consumption: High MPG (litres/100km).^.	53.1 - 43.9 (5.3 - 6.4)	51.5 - 43.1 (5.5 - 6.6)	66.8 - 55.3 (4.2 - 5.1)	65.4 - 54.3 (4.3 - 5.2)
		Fuel Consumption: Extra-High MPG (litres/100km).^*	42.1 - 34.1 (6.7 - 8.3)	40.7 - 33.2 (6.9 - 8.5)	49.5 - 41.6 (5.7 - 6.8)	49.5 - 41.9 (5.7 - 6.7)
		Fuel Consumption: Combined MPG (litres/100km).^.*	45.8 - 38.4 (6.2 - 7.4)	43.7 - 36.8 (6.5 - 7.7)	57.4 - 48.0 (4.9 - 5.9)	57.0 - 48.0 (5.0 - 5.9)
		Carbon Dioxide (CO2) emissions Combined (g/km)	149 - 167	156 - 173	137 - 154	140 - 154
VEHICLE WEIGHT INFORMATION (KG)	Gross vehicle weight	2060	2090	2135	2130	
	Mass in service	1576	1610	1618	1618	
	Kerb weight	1398	1428	1430	1430	
	Gross train weight	3210	3290	3435	3630	
	Maximum braked trailer weight	1150	1200	1300	1500	
	Maximum tow ball weight	74	74	74	74	
INSURANCE CODES	Allure (Standard)	11E	-	11E	-	
	Allure Premium (Standard)	-	15E	11E	-	
	GT (Standard)	-	15E	-	15E	

The fuel consumption achieved, and CO2 produced, in real world conditions will depend upon a number of factors including, but not limited to: the accessories fitted (pre and post registration); variations in weather; driving styles and vehicle load. The WLTP (Worldwide Harmonised Light Vehicles Test Procedure) is used to measure fuel consumption and CO2 figures.

Figures shown are for comparison purposes and should only be compared to the fuel consumption and CO2 values of other cars tested to the same technical standard.

^ 'LOW': Low speed city driving, representative of city centre driving, maximum 35mph.

^^ 'MEDIUM': Medium speed town driving, representative of town or suburban driving, maximum 50mph.

^^^ 'HIGH': High speed rural driving, representative of A-road or dual carriageway driving, maximum 60mph.

^* 'EXTRA HIGH': Extra High speed motorway driving, representative of a typical European motorway, maximum 81mph.

^.* 'COMBINED': A mixed journey average of all elements

Figures quoted reflect a range of configurations (including non-UK market vehicles) and are subject to changes resulting from ongoing product development, range evolutions, testing and evaluations.

PEUGEOT Rifter Long: Technical Specification

		Petrol		Diesel		
		1.2L PureTech 110 S6S 6-speed manual	1.2L PureTech 130 EAT8 S6S 8-speed Efficient Automatic Transmission	1.5L BlueHDi 100 S6S 6-speed manual	1.5L BlueHDi 130 S6S 6-speed manual	
DRIVETRAIN	Fuel type	Petrol	Petrol	Diesel	Diesel	
	Stop and Start functionality	•	•	•	•	
	Cubic capacity (cc)	1199	1199	1499	1499	
	Maximum power hp (Kw)	110 (81) @ 5500	131 (96) @ 5500	102 (75) @ 3750	131 (96) @ 3750	
	Maximum torque lb/ft (Nm)	151 (205) @ 1750	170 (230) @ 1750	184 (250) @ 1750	221 (300) @ 1750	
	5 speed manual	-	-	-	-	
	6 speed manual	•	-	•	•	
	8 speed automatic	-	•	-	-	
BRAKES	Front and rear discs	•	•	•	•	
SUSPENSIONS AND TYRES	Front suspension	Pseudo MacPherson				
	Rear suspension	De-formable Crossmember				
	Size - 16" tyres	215/65 R16 95U - 6.50J16 ET47				
	Size - 17" tyres	215/60 R17 95U - 7.00J17 ET44				
FUEL	Capacity (litres)	60		51		
REGULATED EMISSIONS	Carbon monoxide (mg/km)	443.5	587.5	51.7	52.8	
	Total hydrocarbons (mg/km)	21.9	24	-	-	
	Nitrogen Oxides (mg/km)	51.8	35.2	51.1	49.2	
	Total Hydrocarbons + Nitrogen Oxides (mg/km)	-	-	54.2	53	
	Particulate Matter (mg/km)	1.42	0.89	0.38	0.48	
PERFORMANCE	Maximum speed (mph)	108	124	107	116	
	Acceleration 0-62 mph driver only (sec)	12.3	10.9	15.0	10.9	
FUEL CONSUMPTION INFORMATION	WLTP V. Low / V. High Fuel Consumption	Fuel Consumption: Low MPG (litres/100km).^	39.3 - 36.4 (7.2 - 7.8)	35.9 - 32.9 (7.9 - 8.6)	55.3 - 48.2 (5.1 - 5.9)	56.2 - 48.5 (5.0 - 5.8)
		Fuel Consumption: Medium MPG (litres/100km).^.	48.3 - 40.9 (5.8 - 6.9)	45.6 - 38.6 (6.2 - 7.3)	62.8 - 51.7 (4.5 - 5.5)	61.7 - 51.8 (4.6 - 5.5)
		Fuel Consumption: High MPG (litres/100km).^.	53.1 - 43.9 (5.3 - 6.4)	51.5 - 43.1 (5.5 - 6.6)	66.8 - 55.3 (4.2 - 5.1)	65.4 - 54.3 (4.3 - 5.2)
		Fuel Consumption: Extra-High MPG (litres/100km).^*	42.1 - 34.1 (6.7 - 8.3)	40.7 - 33.2 (6.9 - 8.5)	49.5 - 41.6 (5.7 - 6.8)	49.5 - 41.9 (5.7 - 6.7)
		Fuel Consumption: Combined MPG (litres/100km).^.*	45.8 - 38.4 (6.2 - 7.4)	43.7 - 36.8 (6.5 - 7.7)	57.4 - 48.0 (4.9 - 5.9)	57.0 - 48.0 (5.0 - 5.9)
		Carbon Dioxide (CO2) emissions Combined (g/km)	153 - 167	160 - 173	141 - 154	144 - 154
VEHICLE WEIGHT INFORMATION (KG)	Gross vehicle weight	2250	2280	2320	2320	
	Mass in service	1670	1694	1698	1698	
	Kerb weight	1515	1540	1540	1540	
	Gross train weight	3150	3230	3570	3570	
	Maximum braked trailer weight	900	950	1050	1250	
	Maximum tow ball weight	50	50	74	74	
INSURANCE CODES	Allure (Long)	11E	-	10E	-	
	Allure Premium (Long)	-	16E	11E	-	
	GT (Long)	-	16E	-	14E	

The fuel consumption achieved, and CO2 produced, in real world conditions will depend upon a number of factors including, but not limited to: the accessories fitted (pre and post registration); variations in weather; driving styles and vehicle load. The WLTP (Worldwide Harmonised Light Vehicles Test Procedure) is used to measure fuel consumption and CO2 figures.

Figures shown are for comparison purposes and should only be compared to the fuel consumption and CO2 values of other cars tested to the same technical standard.

^ 'LOW': Low speed city driving, representative of city centre driving, maximum 35mph.

^^ 'MEDIUM': Medium speed town driving, representative of town or suburban driving, maximum 50mph.

^^^ 'HIGH': High speed rural driving, representative of A-road or dual carriageway driving, maximum 60mph.

^^^* 'EXTRA HIGH': Extra High speed motorway driving, representative of a typical European motorway, maximum 81mph.

^^^*^ 'COMBINED': A mixed journey average of all elements

Figures quoted reflect a range of configurations (including non-UK market vehicles) and are subject to changes resulting from ongoing product development, range evolutions, testing and evaluations.

For further information visit our website at peugeot.co.uk or contact your local PEUGEOT Retailer.

		50kWh Electric Battery	
		Standard length Allure Premium / GT	Long length Allure Premium
DRIVETRAIN	Maximum power hp (Kw)	136 (100) @ 5500	
	Maximum torque Nm / rpm	260 / 3674	
	Battery Capacity (kWh) / Battery	50	
	Battery Warranty	8 years / 100,000 miles for 70% capacity	
	Electric Range WLTP (miles)	Up to 172	Up to 166
	Service Schedule	Initial operation 8,000 miles / 1 year, first scheduled service 16,000 miles / 2 years, then every 16,000 miles / 2 years thereafter	
	On Board Charger (kW)	7.4	
	BRAKES	Front and rear discs	●
SUSPENSIONS AND TYRES	Front suspension	Pseudo MacPherson	
	Rear suspension	Panhard bar rear train	
REGULATED EMISSIONS	Carbon monoxide (mg/km)	-	
	Total hydrocarbons (mg/km)	-	
	Nitrogen Oxides (mg/km)	-	
	Total Hydrocarbons + Nitrogen	-	
	Particulate Matter (mg/km)	-	
	Carbon Dioxide (CO2) emissions Combined (g/km)**	0	
PERFORMANCE	Maximum speed (mph)	83	
	Acceleration 0-62 mph driver only (sec)	11.2	
VEHICLE WEIGHT INFORMATION (KG)	Gross vehicle weight	2305	2455
	Kerb weight	1690	1809
	Gross train weight	3055	3205
	Maximum braked trailer weight	750	
INSURANCE CODES	Allure Premium	TBC	TBC
	GT	TBC	TBC

The fuel consumption or electric range achieved, and CO2 produced (where applicable), in real world conditions will depend upon a number of factors including, but not limited to: the accessories fitted (pre and post registration); the starting charge of the battery; variations in weather; driving styles and vehicle load. The WLTP (Worldwide Harmonised Light Vehicles Test Procedure) is used to measure fuel consumption, electric range and CO2 figures.

Figures shown are for comparison purposes and should only be compared to the fuel consumption, electric range and CO2 values of other cars tested to the same technical standard.

Figures quoted reflect a range of configurations (including non-UK market vehicles) and are subject to changes resulting from ongoing product development, range evolutions, testing and evaluations.

Electric figures shown are provisional and for comparison purposes and should only be compared to the fuel consumption and CO2 values of other cars tested to the same technical standard.

^ 'LOW': Low speed city driving, representative of city centre driving, maximum 35mph.

^^ 'MEDIUM': Medium speed town driving, representative of town or suburban driving, maximum 50mph.

^^^ 'HIGH': High speed rural driving, representative of A-road or dual carriageway driving, maximum 60mph.

^^ 'EXTRA HIGH': Extra High speed motorway driving, representative of a typical European motorway, maximum 81mph.

^^^ 'COMBINED': A mixed journey average of all elements

For further information visit our website at peugeot.co.uk or contact your local PEUGEOT Retailer.

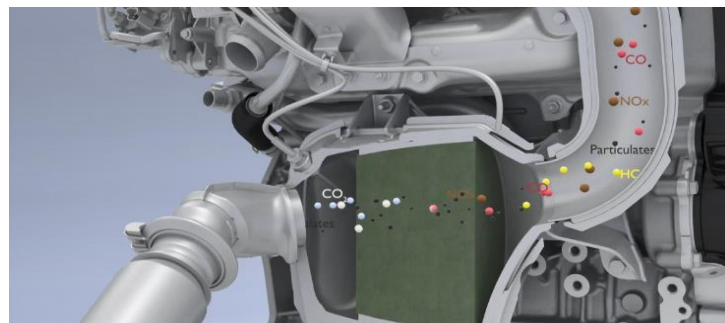
All PEUGEOT models equipped with BlueHDi engine technology are fitted with SCR technology (Selective Catalytic Reduction) and particulate filtration to treat exhaust gases.

How Does the Process Work?

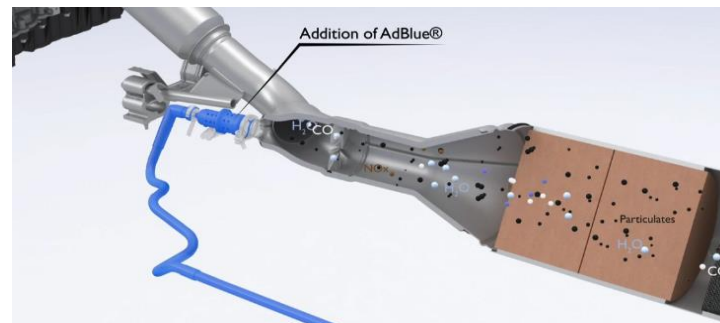
The process specifically targets the pollutants of diesel combustion, removing hydrocarbons and carbon monoxide, reducing nitrogen oxides by up to 90% and eliminating 99.9% of particulates.

This occurs during a three stage process:

- Stage One - the oxidation catalytic converter eliminates the hydrocarbons (HC) and the carbon monoxide (CO), transforming them into water (H₂O) and carbon dioxide (CO₂)



- Stage Two - the SCR (Selective Catalytic Reduction) transforms the nitrogen oxides (NOx) into water (H₂O) and nitrogen (N₂), which is the main constituent of air (78%), due to the addition of AdBlue® (mixture of urea and water)



- Stage Three - the Particulate Emission Filter eliminates 99.9% of the particulates by number, leaving just harmless water (H₂O) and nitrogen (N₂) gases to be emitted from the exhaust

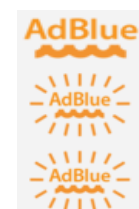


To allow treatment of nitrogen oxides (NOx) emissions, PEUGEOT passenger cars powered by BlueHDi engine technology are fitted with a separate AdBlue® tank to hold the solution. In most instances this tank is around 17 litres in size. AdBlue® like fuel and screenwash is treated as a consumable and must be kept regularly topped up. Various factors can affect consumption of AdBlue® including but not limited to driving style, weight carried in the vehicle and environmental factors.

PEUGEOT Model	AdBlue® Tank Size	Tank Location	Top Up Required
RIFTER	17 litres	Drivers side, under fuel filler cap	Around 3,500 miles / after 7 fuel fill-ups

Topping Up AdBlue®

To prevent your PEUGEOT running out of the AdBlue® additive the car is fitted with a low level detection facility, just as would be the case with fuel. A series of notifications are available but where the AdBlue® range exceeds 1,500 miles (2,400 km), no information range is automatically displayed.



- Remaining range between 1,500 and 500 miles (2,400 and 800 km): When switmilching on the ignition, the orange warning lamp (as shown on the left) comes on for about thirty seconds, accompanied by the display of a message ("Top up AdBlue: Starting prevented in x miles/km") indicating the remaining range expressed in miles or kilometres. The reserve level has been reached; it is recommended that you top up as soon as possible.
- Remaining range between 500 and 62 miles (800 and 100 km): When switching on the ignition, this warning lamp comes on, accompanied by an audible signal (1 beep) and the display of a message (e.g. "Top up AdBlue: Starting impossible in x miles") indicating the remaining range expressed in miles or kilometres. When driving, the audible signal and the message display are triggered every 62 miles (100 km) until the level is topped up. It is essential to top up as soon as possible and before the tank is completely empty; otherwise it will not be possible to restart the engine after the next stop
- Remaining range less than 62 miles (100 km): When driving, the audible signal and the message display are triggered every 6 miles (10 km) until the AdBlue tank is topped up. It is essential to top up as soon as possible and before the tank is completely empty; otherwise it will not be possible to restart the engine after the next stop.

Important Points

- If your vehicle's AdBlue® tank is completely empty – which is confirmed by the alert messages and the impossibility of starting the engine - you must add at least 5 litres of AdBlue® solution
- Never pour AdBlue® into the Diesel fuel tank
- If any AdBlue® is splashed, or if there are any spillages on the side of the body, rinse immediately with cold water or wipe with a damp cloth
- If the fluid has crystallised, clean it off using a sponge and hot water
- Keep AdBlue® out of the reach of children, in its original container
- Never store AdBlue® containers in your vehicle
- Use only AdBlue® fluid that meets the ISO 22241 standard
- Never transfer AdBlue® to another container: it would lose its purity
- Never dilute AdBlue® with water
- Important: in the event of a top-up after an AdBlue® breakdown, you must wait about five minutes before switching on the ignition, without opening the driver's door, unlocking the vehicle or bringing the electronic key into the passenger compartment.



EXTERNAL DIMENSIONS

Length Standard / Long (mm)	4,403 / ,4753
Width (mm)	2,107
Height Standard / Long (mm)	1,878 / 1,882
Wheelbase Standard / Long (mm)	2,785 / 2,975
Front - rear overhang Standard / Long (mm)	892 / 726 / 892 / 886
Front / rear track width (mm)	1,553 / 1,567
Approach / departure angles (degree)	17.5 / 25.7
Ground clearance (mm)	216
Sliding side door Max. opening width (mm)	737
Sliding side door opening height	1145

INTERNAL DIMENSIONS

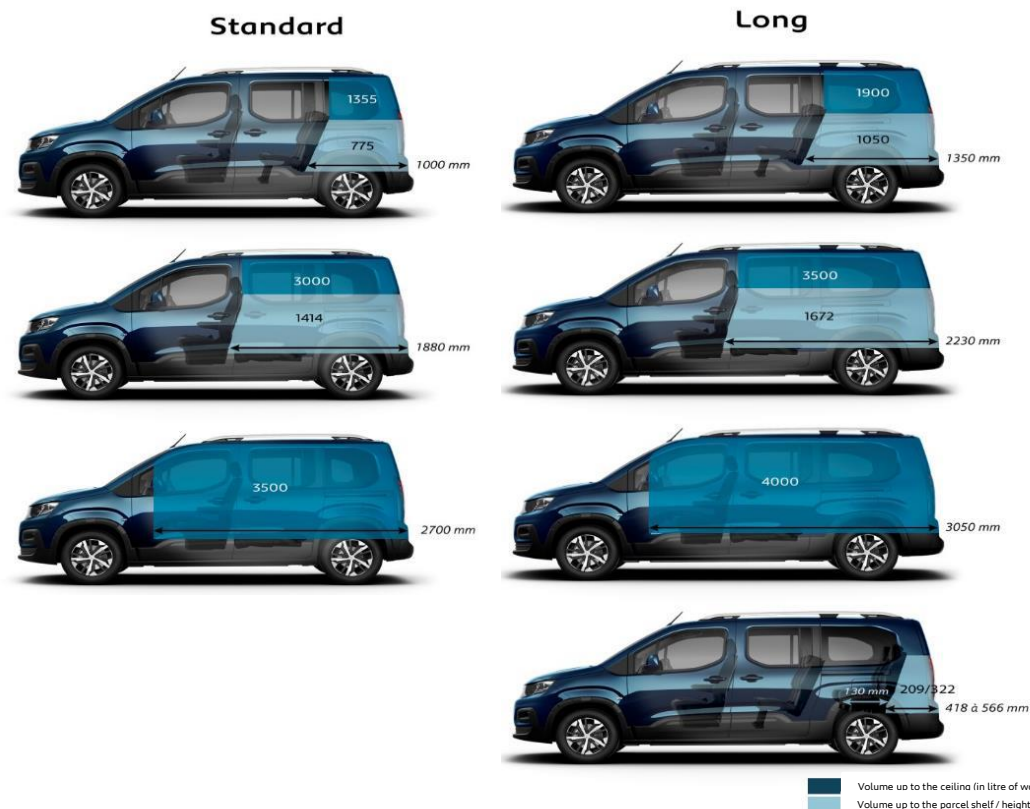
Number of seats Standard / Long	5 / 7
Front 2nd row elbow room (mm)	1,509
Front 2nd row shoulder room (mm)	1,465



(1) Standard
(2) Long

BOOT, STORAGE & FUEL TANK

Maximum loading length Standard / Long (mm)	2,700 / 3,050
Max. loading length behind row 1 (maximum forward position) Standard / Long (mm)	1,880 / 2,230
Max. loading length with passenger seat folded Standard / Long (mm)	2,700 / 3,050
Max. loading length behind row 2 Standard / Long (mm)	1,000 / 1,350
Max. loading length behind row 3 Standard / Long (mm)	236 / 418 to 566
Opening of boot, height / width (mm)	1,195 / 1,126
Boot volume under the parcel shelf Standard / Long with 3rd row removed	775 / 1,050
Boot volume up to the ceiling Standard / Long with 3rd row removed (litres)	1,355 / 1,900
Boot volume under the parcel shelf with 2nd row folded Standard / Long with 3rd row removed (litres)	1,414 / 1,672
Boot volume up to the ceiling with 2nd row folded Standard / Long with 3rd row removed (litres)	3,000 / 3,500
Boot volume up to the ceiling with 2nd row folded and passenger seat folded Standard / Long with 3rd row removed (litres)	3,500 / 4,000
Max. volume of storage areas in the passenger compartment Standard / L	186 [^] / 94
Fuel tank capacity Petrol / Diesel (litres)	60 / 51
AdBlue [®] tank (litres)	17

[^]with Zenith[®] roof


PEUGEOT Rifter: Service Contracts

PEUGEOT offer two levels of Service Contract:

PEUGEOT Service Plans

What's included:

- PEUGEOT Service Plans offer complete assurance that all your servicing costs will be completely covered for the duration of the plan
- We offer PEUGEOT Service Plans for up to five years with many mileage options
- One-off up front or monthly direct debit payment options available
- All packages are affordable and inflation proof, which means they will remain at a fixed cost for the duration of the plan.

Monthly price examples*:

	36 Months / 30,000 Miles	48 Months / 40,000 Miles	60 Months / 50,000 Miles
Rifter	£15.00 per month	£18.65 per month	£16.84 per month
e-Rifter	£6.70 per month	£8.64 per month	£8.53 per month

* Price examples based on an annual mileage of 10,000 per annum

A PEUGEOT Service Plan can be purchased up to 12 months after registration date. The prices quoted above are indicative, for a bespoke quote please contact your local PEUGEOT Retailer. If the plan is taken out after the date of registration an additional payment will be required to cover this starting period. Any normal wear and tear maintenance work such as replacement of tyres, brake pads, brake discs, clutches, shock absorbers, wipers, batteries, bulbs, silencer, exhausts and windscreens are excluded. Servicing must be carried out by a PEUGEOT Authorised Repairer in the UK. PEUGEOT Motor Company reserve the right to change, amend or withdraw this product at any time.

Extended Peugeot Assistance*

What's included: Extension of your PEUGEOT Assistance Cover

- Offers you the opportunity to extend PEUGEOT Assistance up to a further two years
- Cover includes:
 - PEUGEOT Assistance from Home
 - PEUGEOT Roadside Assistance
 - PEUGEOT Recovery
 - PEUGEOT Onward Travel
 - PEUGEOT European Cover

* Excludes non-vehicle induced faults

To find out about extending your PEUGEOT Assistance cover, call 0800 294 0294.



Manufacturers Recommended Retail Price On The Road

The On the Road MRRP featured includes the following from April 2021:

Tax band	CO2 (g/km)	First Year VED	First Year VED Diesel cars*	First Year VED Electric cars	Annual Tax	First Reg fee	Delivery Charge	VAT @ 20% on Delivery	Total OTR Costs Petrol	Total OTR Costs Diesel	Total OTR Costs Electric
A	0	£0.00	£0.00	£0.00	£0.00	£55.00	£625.00	£125.00	£805.00	£805.00	£805.00
B	1-50	£10.00	£25.00	£0.00	£155.00	£55.00	£625.00	£125.00	£815.00	£830.00	£805.00
C	51-75	£25.00	£115.00	£15.00	£155.00	£55.00	£625.00	£125.00	£830.00	£920.00	£820.00
D	76-90	£115.00	£140.00	£105.00	£155.00	£55.00	£625.00	£125.00	£920.00	£945.00	£910.00
E	91-100	£140.00	£160.00	£130.00	£155.00	£55.00	£625.00	£125.00	£945.00	£965.00	£935.00
F	101-110	£160.00	£180.00	£150.00	£155.00	£55.00	£625.00	£125.00	£965.00	£985.00	£955.00
G	111-130	£180.00	£220.00	£170.00	£155.00	£55.00	£625.00	£125.00	£985.00	£1,025.00	£975.00
H	131-150	£220.00	£555.00	£210.00	£155.00	£55.00	£625.00	£125.00	£1,025.00	£1,360.00	£1,015.00
I	151-170	£555.00	£895.00	£545.00	£155.00	£55.00	£625.00	£125.00	£1,360.00	£1,700.00	£1,350.00
J	171-190	£895.00	£1,345.00	£885.00	£155.00	£55.00	£625.00	£125.00	£1,700.00	£2,150.00	£1,690.00
K	191-225	£1,345.00	£1,910.00	£1,335.00	£155.00	£55.00	£625.00	£125.00	£2,150.00	£2,715.00	£2,140.00
L	226-255	£1,910.00	£2,245.00	£1,900.00	£155.00	£55.00	£625.00	£125.00	£2,715.00	£3,050.00	£2,705.00
M	Over 255	£2,245.00	£2,245.00	£2,235.00	£155.00	£55.00	£625.00	£125.00	£3,050.00	£3,050.00	£3,040.00

*Applies to diesel vehicles that do not meet the real driving emissions step 2 (RDE2) standard

VAT is calculated at 20%

VAT is not applicable to cars sold in the Channel Islands

Cars with a list price of over £40,000 when new pay an additional £325 per year on top of the £155 annual tax 'standard rate', for five years after the end of the first licence before returning to the rates listed above. This supplement does not apply to electric vehicles.

PEUGEOT 3 Years of Warranty

All vehicles first registered in the UK and purchased from a UK PEUGEOT Retailer benefit from a PEUGEOT 2 year unlimited mile age manufacturer's warranty and a free optional additional 1 year of warranty provided by the PEUGEOT Retailer Network in the UK.

The battery for the new PEUGEOT e-Rifter is guaranteed for 8 years or 100,000 miles for 70% of its charging capacity.

PEUGEOT Assistance

All new PEUGEOTs come with PEUGEOT Assistance, our breakdown assistance service.

PEUGEOT Assistance is available every minute of the day and night; 365 days of the year, for you and anyone else driving your PEUGEOT with your permission.

Full details are available at www.peugeot.co.uk

Terms and Conditions

All information and prices correct at time of publication, but are subject to change at any time without prior notice (which may occur as a result of matters including, but not limited to, any changes in legislation and/or any changes by the government).

It is our policy to continually improve our vehicles in every way. To avoid any misunderstandings you are advised to check with your PEUGEOT Retailer the prices, specification (including colour), equipment, accessories and equipment relating to any PEUGEOT vehicle and the exact cost and availability prior to ordering.

Where a feature is described as an option in this publication it should be assumed that it is at extra cost unless specifically stated otherwise.

Issued by Sales and Marketing, PEUGEOT Motor Company PLC, Pinley House, Sunbeam Way, Coventry CV3 1ND.

