


'67 Plymouth Belvedere



Satellite 2-Door Hardtop

Plymouth is out to win you over 





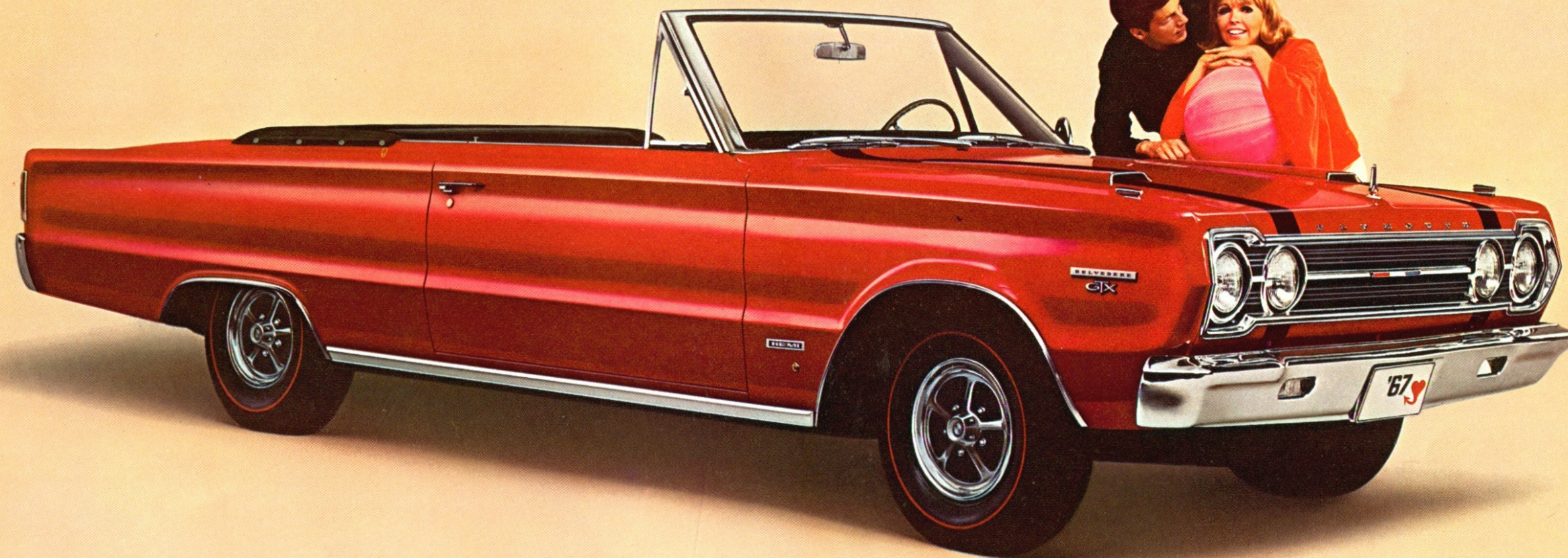
GTX 2-Door Hardtop

GTX

GTX: Plymouth's fastest way to win you over. Turn it on and it turns you on. Just like that. What lights the GTX flame? That deep-throated roar from under the hood gives you an inkling. It's the superhot, Super Commando 440 cu. in. V8. Biggest GT engine anywhere. It's standard. And formidable: 4-bbl. carb with extra-large throttle bores, dual snorkels, hot cam, over-size ports and valves, cast headers, etc., etc.

GTX interior, convertible and hardtop. Rich, supple all-vinyl that oozes luxury. And it's everywhere: on door panels, seats front and rear, and on padded dash. Mounted in the optional console is the manual gear selector for our 4-on-the-floor. How fast will it shift? How fast can you move your hand? Seat belts, front and rear, are standard on all Belvedere models. Seat belts for a centre passenger, optional.

Buckets, buckets, who's got the buckets? GTX! Drop in for comfort. Deeply. Serenely. Broad dual sport stripes for hood and trunk, optional. They serve as a handsome reminder to tread lightly on the lightning. The lightning—the already legendary Street Hemi with 426 cubes to go. 425 hp. A pair of carbs, each with 4 mammoth throttle bores. Chromed unsilenced air cleaner. This one comes with everything but a drag chute.



GTX Convertible

The fantastic Street Hemi is available at extra cost. GTX handling in the convertible and 2-door hardtop is as you'd suspect. Every curve gets a big, firm bear hug. Lean and sway? Virtually eliminated. Heavy-duty torsion bars and over-sized anti-sway bars afford outstanding control on any surface. We've even muscled-up our famous Torque-Flite 3-speed (not just 2) automatic. It's the standard equipment running mate for the

Super-Commando 440. If, however, you possess the gift of grab and prefer to shift for yourself; do so. You'll find our 1-2-3-4 manual punch right up your rally. Beauty marks, GTX style, include dual exhaust outlets, quick-fill gas cap, and special Red Streak tires. If it sounds like we're pulling out all the stops to win you over, you're getting the idea.

GTX STANDARD FEATURES: 440 cu. in. Super Commando V8 • Quick-fill gas cap • Heavy-duty 3-speed automatic transmission • Front bucket seats • Parking brake warning light • Heavy-duty torsion bars, springs, shocks and anti-sway bar • Red Streak tires • Heater and defroster • Armrests front and rear • Battery-saving alternator • Formed carpet covering passenger area • Electric convertible top lift • Instrument panel cigar lighter • High beam, oil

pressure and signal indicator lights • Dual head lamps • Bright exhaust outlets • Bright wheel lip moulding and sill moulding • Dome courtesy light (hardtop) • Map and courtesy light • Ash receiver front and back • Torque-Flite column mounted control • Three-spoke steering wheel • Hub caps • Stainless drip moulding • Exterior finish Acrylic Super Enamel • Plus a complete list of standard safety equipment features listed on back cover.



Satellite 2-Door Hardtop

SATELLITE

Satellite: If your present rig has you feeling powerless all of a sudden—surrender. Satellite could happen to anybody, from sports buff to breadwinner. Either way, Satellite fills the bill. Beautifully. Actively. Front row centre you find a lighted, lockable sports console. The chrome trim and courtesy lights make it a beautiful go-between for those cushy up-front bucket seats. Satellite, like '67 Belverdes, is longer, wider, roomier

than its chief competition. Great for a party of five. Or six, if you choose the fold-down armrest with centre seat. Now, sample Satellite spirit. It starts with the standard 273 cu. in. standard V8 and booms its way—all the way—to our 383 cu. in. 4-bbl. job,* with dual exhausts. While catching your breath, mull over these eye-catching Satellite features: wrap-around tail lights, fender-

*Optional at extra cost

mounted turn signals, upper body accent stripes (5 colour choices), and special satin-silver Aluma-Plate—the full length of the lower body. All standard. Satellite convertible or 2-door hardtop. Whichever one wins you over—you still end up the winner. Satellite convertible and hardtop interior. The most expensive-looking you've ever been able to easily afford. Saddle-grain all-vinyl with luxurious "tooled leather"

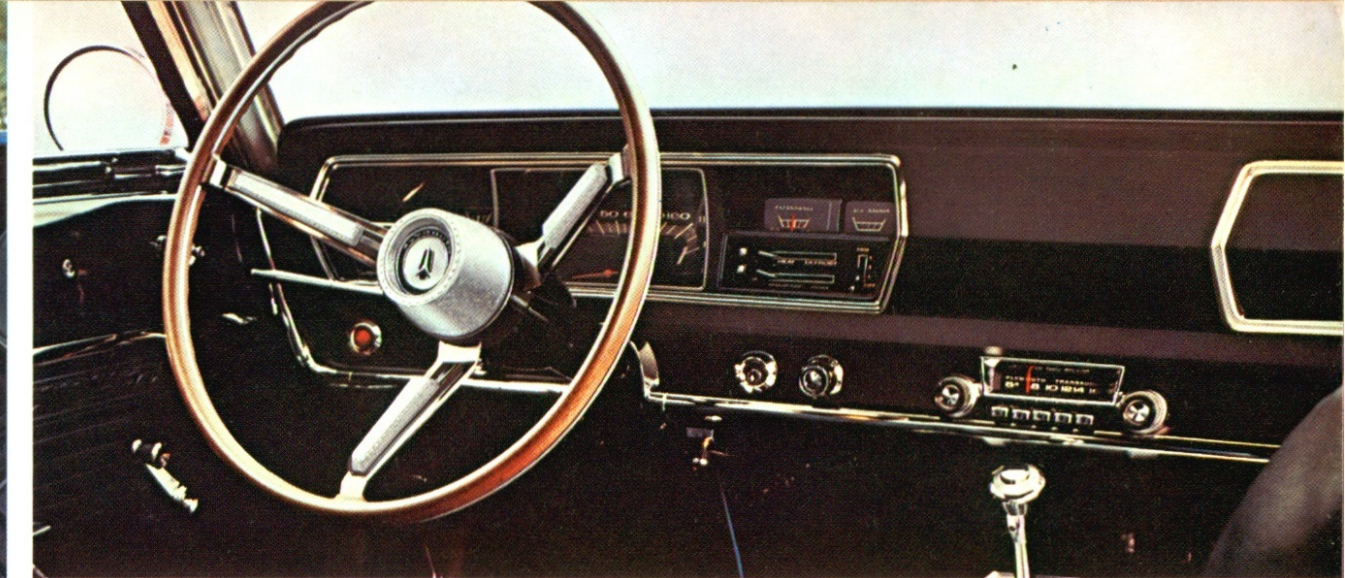
design on seats and door panels. Rear seats are specially padded to simulate buckets. Wall-to-wall carpeting. Unheard of! A choice between two lavish features. And you don't shell out one cent extra for that choice. Sporty centre console with side-mounted courtesy lamps and lockable storage compartment... OR... combination fold-down armrest and centre seat. Up—there's room for three. Down—

you've got buckets with armrests. Swift. Smooth. Silent. That's the gist of optional Torque-Flite, the most copied automatic transmission in the business, 3 speeds, instead of just 2. Console-mounted if you wish. Everything's padded but the price. Including those sleepy-time headrests. Optional on all bucket seat models. Vinyl-covered. A lot of dash. Easy-to-read non-glare instrumentation. Radio controls, ashtray

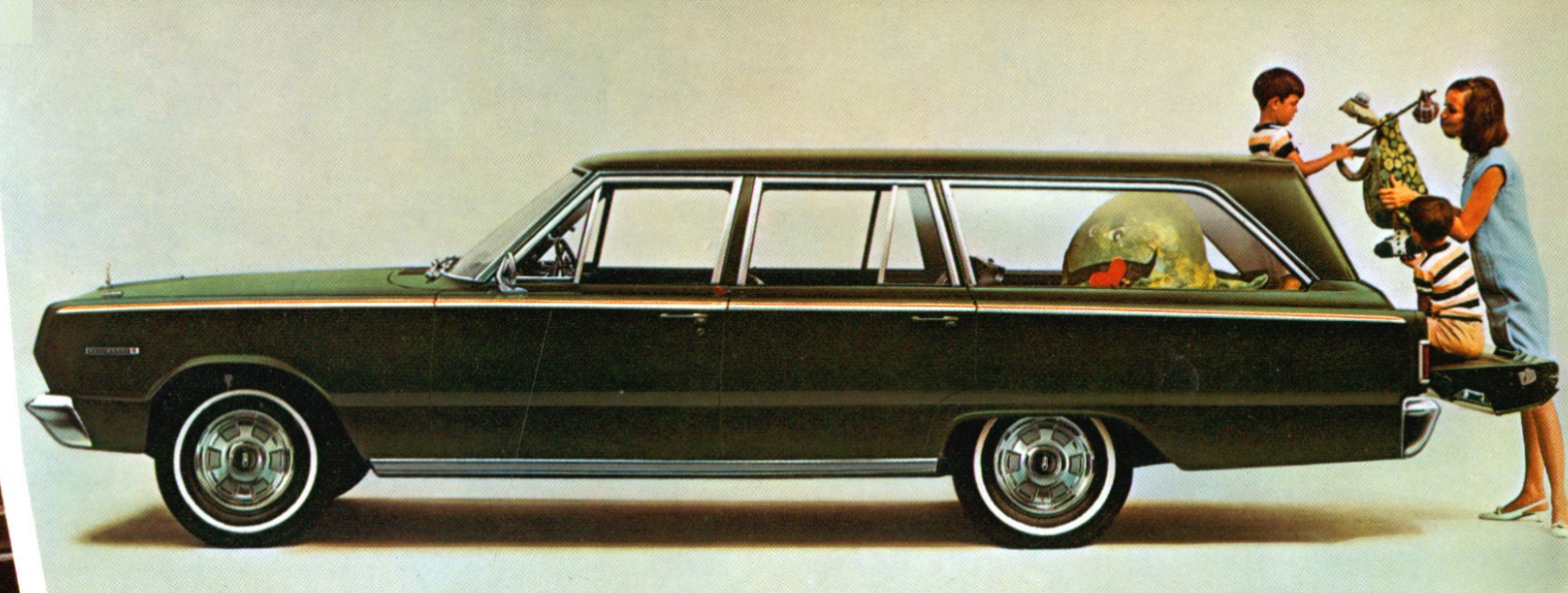
and lighter are within easy reach. Optional simulated wood steering wheel with unique horn bars on each spoke. Glove compartment sized to take on a lot more than a skimpy pair of gloves.

SATELLITE STANDARD FEATURES: 273 cu. in. V8 engine • 3-speed manual transmission • Front bucket seats • Deluxe wheel covers • Parking brake warning light • Fender-mounted turn signal indicators • Heater and defroster • Torsion-bar suspension

Armrests front and rear • Battery-saving alternator • Glove box light • Aluminum side moulding • Formed carpet covering passenger area • Electric convertible top lift • Instrument panel cigar lighter • High beam, oil pressure and signal indicator lights • Dual head lamps • 3-spoke steering wheel • Wheel opening lip moulding • Map and courtesy light • Ash receiver front and back • Upper body paint stripe • Stainless drip mouldings • Exterior finish Acrylic Super Enamel • Plus a complete list of standard safety equipment features listed on back cover.



Satellite Convertible



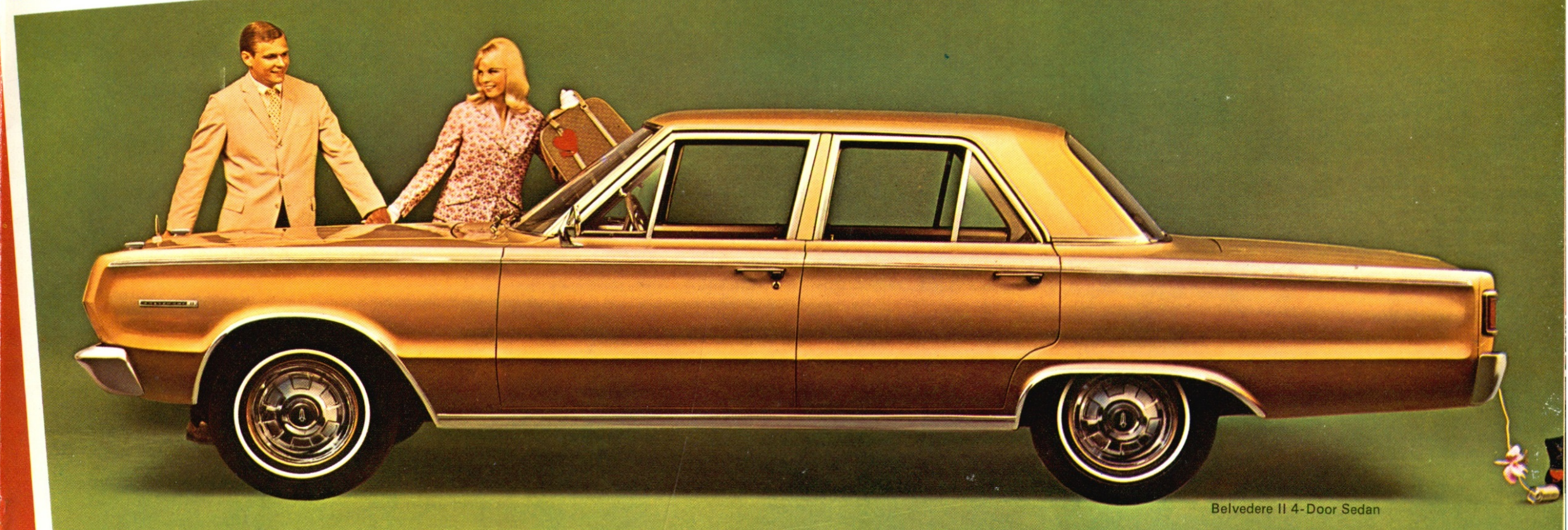
Belvedere II 3-Seat Wagon



Belvedere II 2-Door Hardtop



Belvedere II Convertible



Belvedere II 4-Door Sedan

BELVEDERE II

Belvedere II. If you're on the lookout for luxury, look out! This one will win you without a tussle. Want to wallow in luxury? The Belvedere II Convertibles and Hardtops can only be described as scrumptious. Wide bench-type seating in elegant cloth and vinyl combinations come with the hardtop—all-vinyl in the convertible. And if you can tell the difference between the supple all-vinyl upholstery and

genuine leather you're a positive authority on the subject. Convertibles feature a new air-tempered *glass* back light! It's more durable than plastic. Won't discolour with age. Resists scratching... beautifully. And if you're hardtopping it, here's a beautiful way to put something over on yourself—satin vinyl roof covering in black or white. Smooth! Interiors are just too plush for words. Luxurious carpets as far as the eye

can see. Exotic Jacquard fabric upholstery, combined with shimmering vinyl. Lavish. Safety door handles that operate just like seat belts come standard on all Belvederes. Hungry for power? Belvedere II dishes up a potent 225 cu. in. 'six' engine standard. Optional extras? From a deluxe wood steering wheel to the latest air conditioning, there's just no limit to how far you can go. Up to now we've been tantalizing you with

the glitter and go of hardtops and convertibles. Well, it could just be that you're a sedan fancier. Great. We've got a fancy one for you—Belvedere II. With bright wheel lip mouldings, full body length stainless mouldings, and wrap-around tail lights. All standard. Inside, deep loop carpeting from here to there. Foam-padded dash and sun visors. Sumptuous Jacquard-woven nylon body cloth. How can you top that? With a vinyl roof* in white

*Optional at extra cost

or black. On a sedan? On a Belvedere II sedan! Wagons? You betcha! We have our winning ways with those too. Meet the largest, most versatile wagon in its class. Belvedere II—3 seater or 2. 6-cylinder or V8. They haul like wagons, ride like sedans, look like a million, and have sporty, easy-care all-vinyl interiors like convertibles. How sophisticated can a wagon get! Electrically-powered tail-gate window is

standard on 3-seat models. Operates from the dash panel or with a key in the tail-gate lock. The 3-seater, with the second and third seats folded flat into the floor, gives you more than 10 feet of unobstructed cargo space!

BELVEDERE II STANDARD FEATURES: 225 cu. in. 6-cylinder engine • 3-speed manual transmission • Parking brake warning light • Heater and defroster • Torsion-bar suspension • Armrests front and rear • Battery-saving alternator • Full-length upper door

moulding • Door upper mouldings (4-door models) • Formed carpet covering passenger area • Electrical convertible top lift • Instrument panel cigar lighter • High beam, oil pressure and signal indicator lights • Bench type seats • Stainless drip mouldings • Dual head lamps • Wheel opening lip moulding • Dome courtesy lights (4-door sedans) • Map and courtesy light • Tail-gate power window lift (3-seat wagon) • Ash receiver front and back • Hub caps • Exterior finish Acrylic Super Enamel • Plus a complete list of standard safety equipment features listed on back cover.



Belvedere I 2-Seat Wagon



Belvedere I 2-Door Sedan

BELVEDERE I

Belvedere I. Our lowest-priced way to win you over. Honest! OK. We know it looks too good to be true. But that's Belvedere I for you. One more in a long line of plots to persuade you. Witness the exceptional exterior lines. Take them in carefully. Calculatingly. The only thing they leave to be desired is Belvedere I, itself. And the low price is just the beginning of this one's saving ways. Its standard 225 cu. in.

6-cylinder engine has pinned on more 'economy-run' blue ribbons than you can shake an eye-dropper at. (And it's sprightly to boot!) See that outside rear-view mirror? It's standard equipment. (Bet the one on your present car was an extra-cost option.) It's extra value items like this that make Belvedere a real pleasure to drive and more profitable for you at trade-in time. What'll we think of next to court and conquer you?

Just check out Belvedere I's lengthy standard equipment list. Did we forget your spare tire? No. In fact we gave it extra thought so you'd get extra space. It's conveniently located under the trunk mat instead of on it. Largest luggage area by far in its class. Low sill for easy in-and-outing. Belvedere I sedan interior. Cloth-and-vinyl. The fabric, 100% nylon, has a three dimensional (hi-low) motif. It looks expensive.



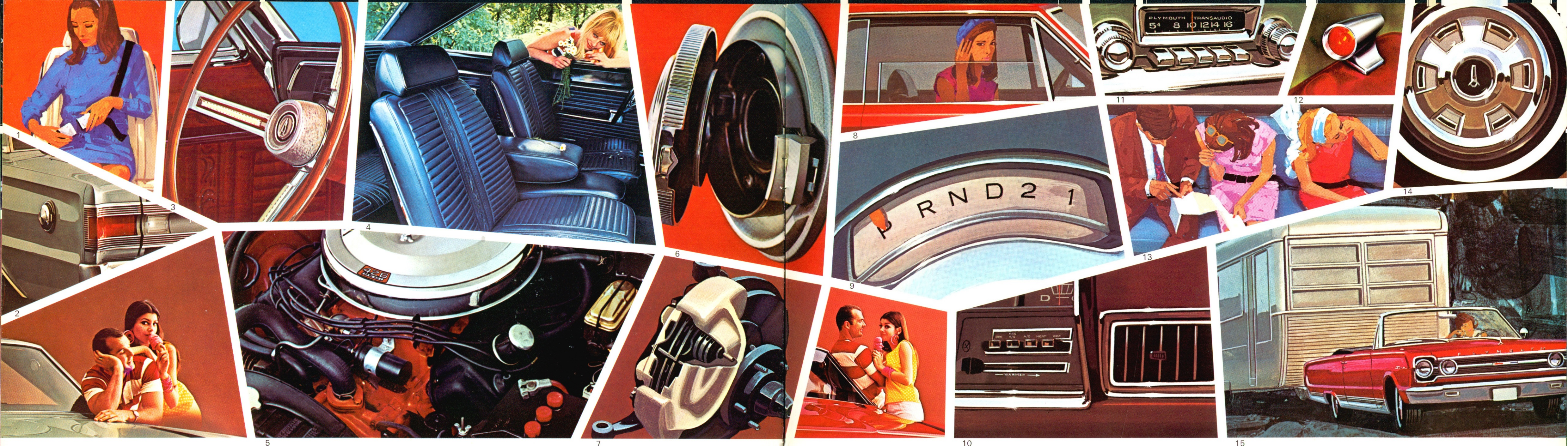
Belvedere I 4-Door Sedan

It feels expensive. But it's standard. Seat trim, dash, and door panels in scuff-resistant vinyl. If most of your carrying-on is on the light side, you're probably after a Belvedere I with our standard 225 cu. in. 6-cylinder engine. It's agile, economical. If your routine calls for more flashy action, you'll want to join forces with a bigger V8. We have three you can pick from. Inside, you have a great chance

to try your hand at interior decorating. There's a generous variety of tasteful trims. So pick your surroundings and name your body style. Belvedere I's a beautiful way to get carried away.

BELVEDERE I STANDARD FEATURES: 225 cu. in. 6-cylinder engine • 3-speed manual transmission • Parking brake warning light • Heater and defroster • Torsion-bar suspension • Armrests front and rear

Battery-saving alternator • Aluminum sill moulding • Dome light • Instrument panel cigar lighter • High beam, oil pressure and signal indicator lights • Bench-type seats • Colour-keyed rubber floor mat passenger area • Dual head lamps • Dome courtesy lights • Ash receiver front and back • Three-spoke steering wheel • Hub caps • Exterior finish Acrylic Super Enamel • Plus a complete list of standard safety equipment features listed on back cover.



Some winning touches of your own:

Belvedere extra-cost options and accessories

(plus a couple of standard features we'd like you to see again)

When you buy Belvedere, you brand it. With your kind of gear.

1. Sure, Belvedere's *shoulder harnesses* are fully tested safety equipment. Now, here's something you might not know. Shoulder harnesses help reduce fatigue on long runs, and increase road feel, too.
2. *Back-up lights*. Great for getting in and out of tight parking spots at night. Standard on all

Belvederes. They automatically light when the car's in reverse.

3. *Special steering wheel*. Looks great. Feels great. Just like wood on both counts. Yours for the asking on all Belvedere models.
4. Satellite and GTX models come with *bucket seats* in front. The padded *head-rests* come special. They adjust up and down just the way you want them.

5. If you really want to get out of town, here's the engine to do it for you—the *Hemi 426*. So special only GTX has it—as an option. Two 4-barrel carbs. Special camshaft. Dual exhausts. Unsilenced air cleaner. Things like that.

6. This is GTX's racing-type *fuel filler cap*. Flip open. Fill up. Pop shut. Standard on GTX only.

7. Real stoppers. Big caliper-type *disc brakes* up front. Big drums in back. Plenty of whoa. No excuses. Optional on all models.

8. You think *power windows* and *tinted glass* are woman stuff? Right. Now . . . what about the women that ride with you?

9. Driver's eye view of the automatic transmission *gear selector quadrant*. Lights up at night, too, just to be sure.

10. Remember that hot muggy day last summer when you swore you'd get *air conditioning* next year? Well?

11. You spend a lot of time in your car. And the *radio* keeps you company. Great company.

12. *Fender-mounted turn signal indicators* come standard on Satellite. But you can have them on any other Belvedere model too, if you wish.

13. Three people sit in the back seat. Three people get *lap safety belts*. It's as simple and safe as that.

14. Formal attire. This handsome, low-cost *wheel cover* is standard on Satellite. Optional everywhere else.

15. Maybe you're a trailer man. Belvedere's got a complete *trailer-towing package* with a heavy-duty axle, high-capacity cooling

system, anti-sway bar, heavy-duty shocks and everything else you need to make your trailer handle like a kiddy car.

safety features standard on every '67 Belvedere

- 2-speed electric windshield wipers
- Windshield washer
- Padded instrument panel and sun visors
- Front and rear seat belts, with retractors (front only)
- Dual-system hydraulic heavy duty brakes
- Hazard warning light system
- Impact-absorbing steering column
- Remote control outside-left rear view mirror, prismatic inside rear view mirror
- Safety-Rim wheels
- Back-up lights
- Safety-Designed door handles

THE BIG PLUS...5-YEAR—50,000-MILE POWER-TRAIN WARRANTY

Behind the handsome beauty of all the Belvedere models shown in these pages lies the solid engineering tradition that is exemplified in Plymouth's unique 5-year—50,000-mile power-train warranty. Quite simply, this warranty means what it says: should any major power-train component fail through defect in materials or workmanship within 5 years or 50,000 miles driving, it will be repaired or replaced free of charge. This includes both parts and labour. (Any Plymouth dealer will be glad to explain how easy it is to comply with the simple steps necessary to maintain this warranty.)

The Warranty covers all the main power-train components

including engine block, head and internal engine parts, intake manifold, water pump, transmission case and internal parts (excluding manual clutch), drive shaft, universal joints, torque converter, rear axle and differential and rear wheel bearings. It will be honoured by any Plymouth dealer (or any Chrysler dealer, for that matter) anywhere in Canada or the United States. This warranty tells you two important things about Plymouth dealers: how much confidence they have in the way Plymouth products are built... and how much concern they feel for those who buy a Plymouth. This warranty is the Big Plus you get on Chrysler-built cars. Ask your dealer about it.

specifications

Exterior Dimensions

	Sedans	Station Wagons	Hardtops
Wheelbase.....	116.0	117.0	116.0
Over-all length.....	200.5	208.8 (3-seat)	200.5
width.....	76.4	76.4	76.4
height.....	55.0	56.5 (3-seat)	54.1
Track front wheels.....	59.5	59.5	59.5
rear wheels.....	58.5	58.5	58.5

Interior Dimensions

	Sedans	Hardtops	Convertibles	Station Wagons
Headroom front.....	38.8	37.8	38.7	39.4
rear.....	37.8	37.1	37.2	39.3
Legroom front.....	42.0	42.0	42.0	42.0
rear.....	36.2	33.9	33.9	36.2
Seat height front.....	8.6	8.6	8.6	8.6
rear.....	11.0	9.9	9.9	11.0

Engines

	Standard Six	Standard V8	Standard GTX V8	Optional V8 Engines			
Displacement, cu. in.....	225	273	440	318	383	383	426 (Hemi)
Carburetors.....	1-1 barrel	1-2 barrel	1-4 barrel	1-2 barrel	1-2 barrel	1-4 barrel	1-4 barrel
Compression ratio.....	8.4	8.8	10.1	9.0*	9.2	10.0	10.3
Camshaft.....	Standard	Standard	Special	Standard	Standard	Standard	Special
Fuel recommended.....	Regular	Regular	Premium	Regular	Regular	Premium	Premium
Type air cleaner.....	silenced	silenced	2-snorkel	silenced	silenced	2-snorkel	unsilenced
Exhaust system.....	single	single	dual	single	single	dual	dual

Transmissions

	6 cyl.	8 cyl.	Optional—manual 4-speed.....
Type and low gear ratio			(with 383, 426, 440 cu. in. engines) — 2.66 to 1
Standard—manual 3-speed....	2.95 to 1	3.02 to 1	Automatic 3-speed.....2.45 to 1 2.45 to 1

*9.2:1 Convertibles

Rear Axle Ratio

Rear Axle Manual 3-speed, 225, 273 engines	3.23 to 1
318 engine.....	2.94 to 1
Ratio, Manual 4-speed, 383 cu. in. engine..	3.23 to 1
440 cu. in. engine.....	3.31 to 1
426 cu. in. Hemi.....	3.54 to 1

Automatic 3-speed, all six cyl. except wagon .2.93 to 1

6 cyl. wagons, and all models equipped with 273, 318, 2 bbl. 383 and 440 engines.....	2.94 to 1
4 bbl. 383 & 426.....	3.23 to 1

Chassis Specifications

Turning diameter—curb to curb—feet—except wagons.....	40.6
wagons.....	40.9
Suspension—type—front.....	Torsion Bars
Suspension—type—rear.....	Leaf Springs

MAJOR POWER-TRAIN COMPONENTS ON EVERY PLYMOUTH BELVEDERE ARE WARRANTED FOR 5 YEARS OR 50,000 MILES (WHICHEVER FIRST OCCURS). IN ADDITION TO THE NORMAL 12-MONTH OR 12,000-MILE (WHICHEVER FIRST OCCURS) VEHICLE WARRANTY. YOUR DEALER HAS FULL DETAILS.

NOTE: Chrysler Canada Ltd. reserves the right to change prices, specifications and standard equipment without notice, and without obligation to make changes on vehicles already produced. Vehicles pictured, in some cases, show optional equipment available at extra cost.

Brakes—Self Adjusting

	total lining area sq. in.	
	6 cyl.	8 cyl.
Drum Brakes, (except Wagons and GTX)	165.9	195.2
Wagons.....	195.2	195.2
GTX.....	—	234.1

Disc Brakes, all models.....131.6 131.6

Capacities (all liquids in Imperial measure)

	6 cyl.	8 cyl.
Fuel tank, gals.....	15.8	15.8
Engine crankcase, qts.....	3.25	3.25
Cooling system (with heater, qts).....	10.8	14.0

Electrical System

A 12-volt 37-ampere alternator. A 48-ampere hour battery and two-speed electric windshield wipers are standard on all models.

Wheels and Tires

	Tire Size	Rim Size
6 & 8 cyl. except wagons & GTX	7.35 x 14	5.0K
6 cyl. wagons (2-seat).....	7.75 x 14	5.5K
8 cyl. wagons, 6 cyl. (3-seat wagons).....	8.25 x 14	5.5K
GTX.....	7.75 x 14	5.5K

NOTES