

Pontiac Safari '74

Grand Safari · Catalina Safari · Laurentian Safari · Luxury LeMans Safari · LeMans Safari ·

Astre Safari Custom · Astre Safari





Pontiac Grand Safari

How grand can a Wide-Track wagon get?

This grand.

Thick, cut-pile carpeting—including the lower door panels and the cargo area.

A Custom Cushion steering wheel with the feel of sheer luxury.

An optional cloth upholstery in saddle tweed (that's it, to your right) or you can choose standard all-vinyl Morrokide that comes in four rich colors. Either way, the front seat has a fold-down centre armrest.

This is the grand manner. So of course you get such amenities as an electric clock, door pull straps, two front seat illuminated ashtrays, Deluxe wheel covers, body-color outside door handles—and the maxi-convenience of a disappearing tailgate.

Notice we haven't mentioned the standard 455 CID 4-barrel V8 or Turbo Hydraulic transmission or variable-ratio power steering or power front disc brakes.

This is Grand Safari!

And Grand Safari answers the question—how grand can a Wide-Track wagon get—as you would expect. Magnificently!



Above: Fully-carpeted cargo area offers 106.4 cubic feet capacity, not including hidden compartment under floor;

Left: Grand Safari station wagon with optional simulated woodgrain panelling;

Right: Grand Safari station wagon with optional protective side molding.



Cover; Left: Grand Safari; Right: LeMans Safari; Background: Astre Safari Custom.

Some of the equipment shown or mentioned is optional at extra cost.



Pontiac Catalina Safari

When is a wagon much more than a utility vehicle for hauling stuff to the cottage?

When it's a Pontiac Safari!

Catalina Safari fits nicely between ultra-luxury and Pontiac-style practicality.

It has the same kind of power train and comforting full-foam seats (including the forward-facing third seat if you order the 3-seat model) as a Laurentian Safari.

This one has a little more. Catalina puts on even more show than our lowest-priced big Safari (see next page). You get lamps for the glove box and cigarette lighter. Two ashtrays in the instrument panel. Perforated vinyl head-lining for extra silence. Dual horns for a bit more attention. And a hidden-in-the-windshield antenna.

And Catalina gives you the option of ordering exterior simulated woodgrain panelling that's translucent on the sides and reflectorized on the Glide-away tailgate.

Big Pontiac wagon features. The power steering is *variable ratio*, the automatic transmission is Turbo Hydra-matic, the power front brakes are discs and the power rear brakes have extra-large drums for more brake lining and extra cooling.

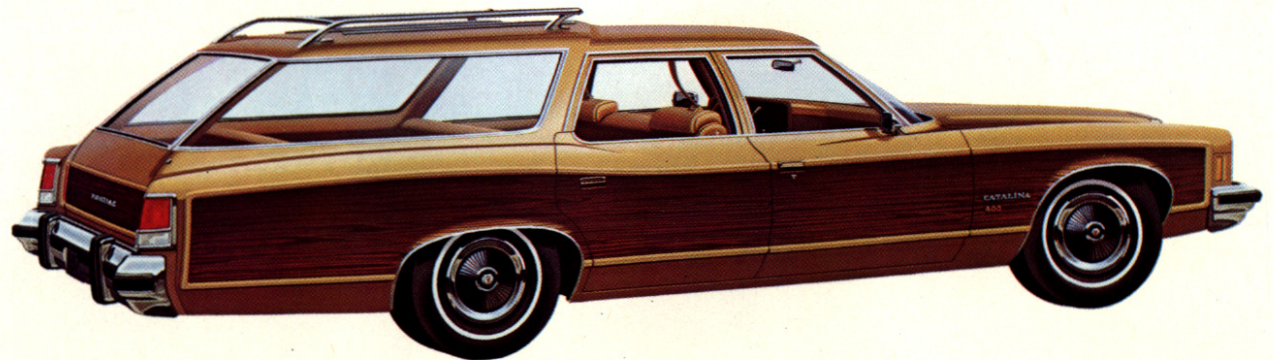
Like all Safaris, Catalina is more than a wagon. It's a Wide-Track Pontiac!



Above: Standard all-vinyl bench;
Left: Optional forward-facing third seat.



Right: Catalina Safari with optional simulated woodgrain panelling;
Left: Catalina Safari.



Some of the equipment shown or mentioned is optional at extra cost.



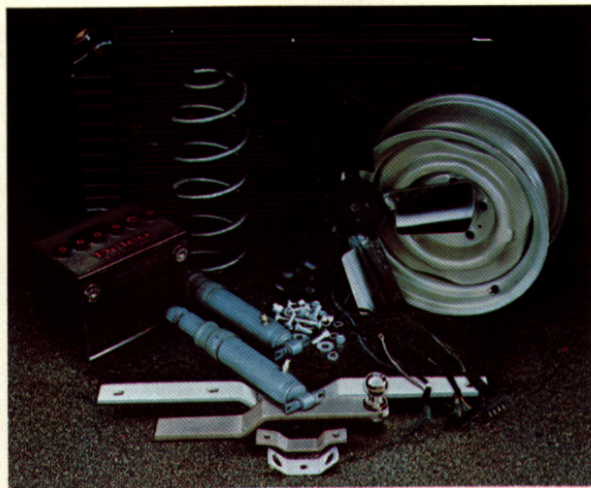
Pontiac Laurentian Safari

It's a big Pontiac. So naturally a '74 Laurentian Safari comes well equipped: a strong 400 CID 4-barrel V8, 3-speed Turbo Hydra-matic, improved variable-ratio power steering, power front disc brakes—Pontiac's above-standard "Standards" for a full-size Wide-Track wagon.

And that means it all comes on a longer (3" longer than our big cars) 127" wheelbase to take everything in its stride, smooth 'n' easy. And Laurentian Safari has big L78 x 15 belted tires, along with a specifically-tuned leaf-spring rear suspension for outstanding stability and handling under heavy loads. It even comes with *two* outside mirrors—which you can have remote-controlled by the driver at extra cost.

Backing up the story. How many times will you appreciate having a disappearing tailgate? Probably as many times as you load and unload your wagon. The power rear window (Standard!) slides up into the roof, the tailgate pushes down under the floor. Order the tailgate with power and you can control the whole operation from behind the wheel. Very neat.

New for '74 is the air/hydraulic rear bumper. Added protection with style. Also new are the reflective vertical moldings—



outboard, each side—to help alert other drivers behind you at night.

Something you don't need at the back is an air deflector. The natural flow of air over the roof and the curved shape of the rear helps keep the tailgate window cleaner.

Extra thoughts. Planning to haul a trailer? Talk to your salesman about the correct factory-installed trailer package.

While if you want all the roadability going, get full information on the available steel-belted radial ply tires. Together with the radial tuned suspension, they offer

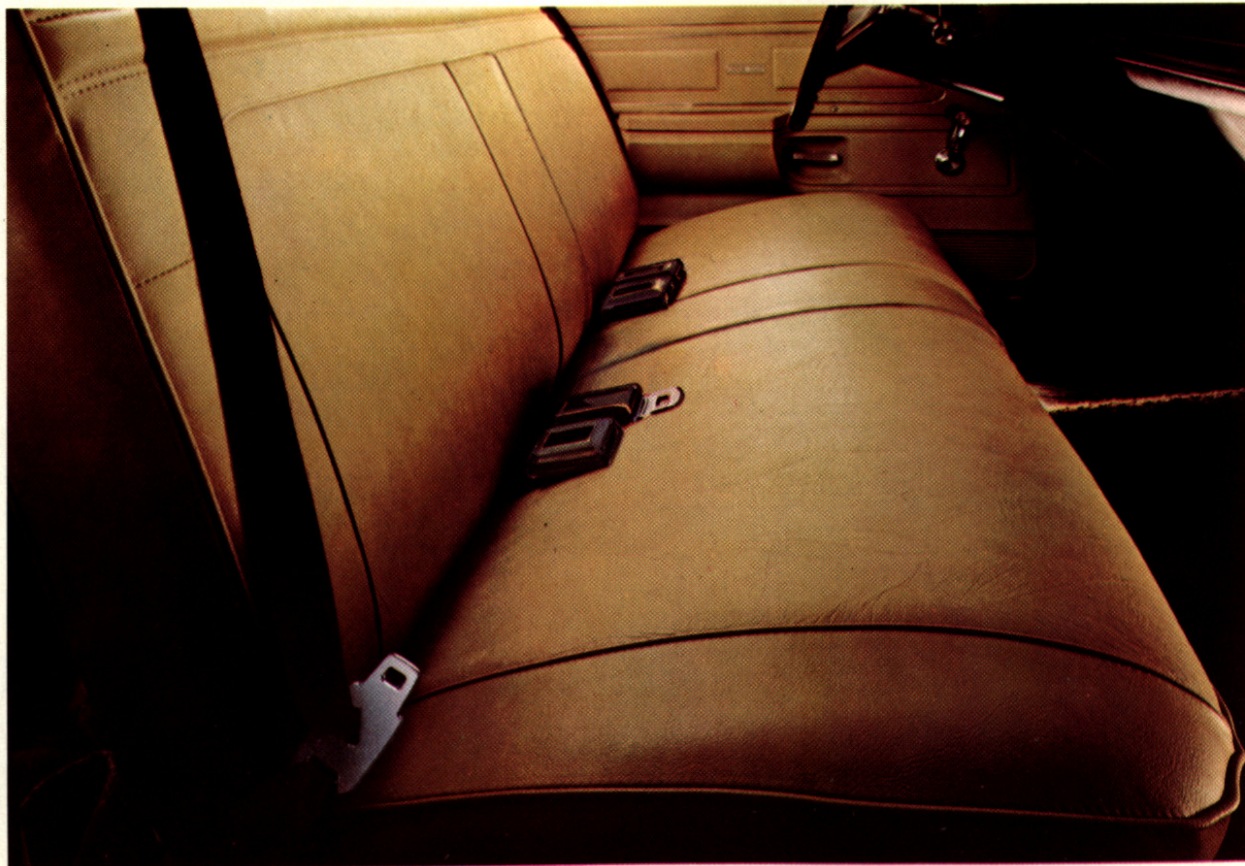
improved performance for your Pontiac station wagon.

Indeed, the Wide-Track people have a way with wagons. Call it the Safari way!

Far left: Laurentian Safari station wagon;

Below: Standard Laurentian interior showing full bench seat upholstery in vinyl Morrokide;

Below, left: Trailer-towing items. Ordering your Safari wagon with the proper equipment costs much less than trying to adapt it for trailering later on. Ask for the special Pontiac trailer-towing catalogue.





Pontiac LeMans Safari & Luxury LeMans Safari

Being sensible is in style. How often will you want more than 85-plus cubic feet of storage space? There's another 9 cubic feet under the load floor—more than the trunk room of some small cars. Order the rear-facing third seat and you lose a bit of that hidden bonus space for cargo, but you gain another full-foam seat for people.

Sensible. A powerful 350 CID 2-barrel V8, standard. A tailgate that lifts up out of the way for obstruction-free loading. Air/hydraulic bumpers, fore and aft, that act like shock absorbers on minor impact.

Fade- and water-resistant power front disc brakes with audible wear sensors for added security. And extra-large power rear drum brakes to help stop a heavily loaded wagon.

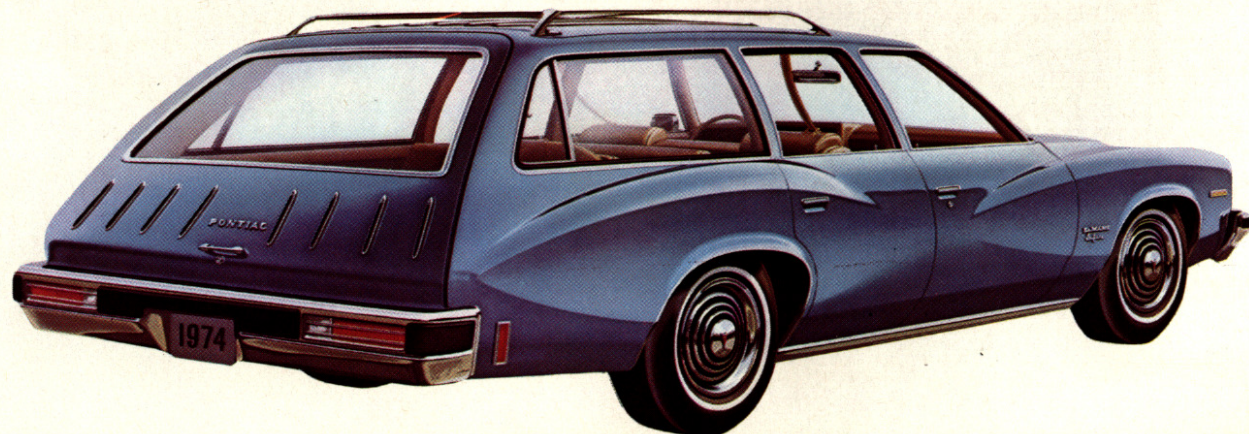
Your LeMans Safari is carefully tuned. Body and engine mounts and suspension bushings are individually selected. And the springs are specified by computer just for your wagon equipped the way you order it.



Owning a LeMans Safari is being sensible and enjoying it. The Wide-Track way.

Luxury LeMans Safari. It's all that a LeMans Safari is—and a little more.

The warm look of wood panelling outside. Additional woodgrain appliques inside.



A cushioned steering wheel. Extra sound-deadening insulation.

Page 12 lists some more reasons why a mid-size Pontiac wagon makes sense.

Mid-size Wide-Track. Whether you choose a LeMans or Luxury LeMans Safari, a rear-facing third seat is available. When you have a 3-seat model, you also get standard swing-out rear quarter vent windows and an electric liftgate release (the control is in the lockable glove box).

And with all this, you have a wagon that rides and handles like a Wide-Track—with computer-selected springs, 4-wheel coil-spring suspension and a perimeter frame to keep that ride smooth.

LeMans Safari. Luxury LeMans Safari. The Wide-Track way—mid-size.

Far left: Luxury LeMans Safari with standard simulated woodgrain panelling;

Left: Luxury LeMans standard interior in vinyl Morrokide showing Custom Cushion steering wheel;

Below: LeMans Safari showing rear vertical molding treatment;

Below, left: Liftgate is fully counter-balanced to hold its position where you put it.



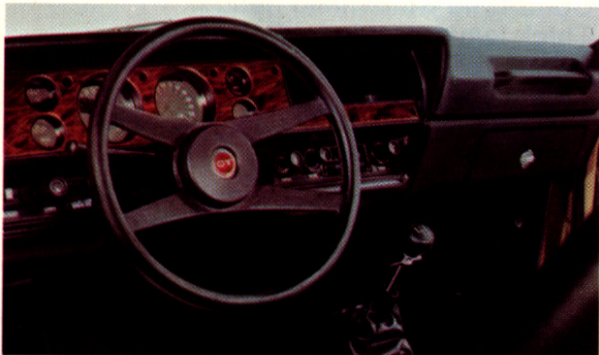
Pontiac Astre Safari

The practical little wagon. Here's beautiful proof that being practical can be fun.

Astre offers the gas savings of a four-cylinder engine, the zip of an overhead-cam, the 33-foot turning diameter of a little car and the almost six-foot-long load floor of a small Pontiac Safari.

So you might be attracted to Astre by its new styling or its low price but you'll learn to love it for its practicality.

There's surprising luxury, too. It has simulated Flame Chestnut interior trim and full-foam seats and cut-pile carpeting and



Instrument panel with GT option package.

much more—like bigger Safaris—but Astre has its own distinct qualities.

See overpage for a short listing of standard features of Astre and the even more luxurious Astre Safari Custom.

Built in Canada. That's one of the nice things about Astre Safari. Your salesman can fill you in on others—such as turning your little wagon into an exciting GT!

A GT station wagon? Right on! Pontiac pours it all on with the GT option. It's a package that gives you an even higher-powered, 2-barrel version of Astre's 140 CID overhead-cam engine.

It goes on. With a special, firmer suspension and fatter, wide-oval white-letter tires. For performance.

And styled-steel, GT wheels with trim rings and body-colored door handles and special exterior trim. For show.

Along with a small-diameter GT steering wheel, distinctive GT instrumentation and more. Because GT people want it *all*.

You can even order GT stripes! How's that for a little station wagon?

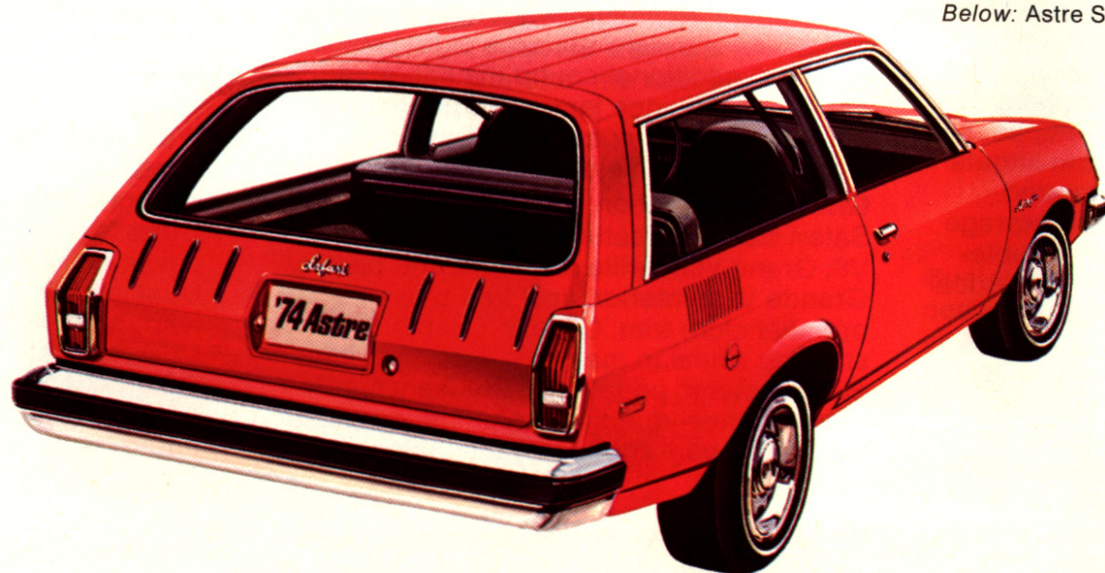


Ever think that economy could look like this? Wait 'til you see how it feels. And drives. Ask for a demo drive first thing. Pontiac Astre Safari. Right on!

Far left: Astre Safari Custom station wagon showing standard simulated woodgrain panelling;

Above: Liftgate offers easy access to fully-carpeted cargo area (50.2 cubic feet capacity with rear seat down);

Below: Astre Safari station wagon.



Standard features...a partial list

Astre Safari station wagon. Standard features include: 140 CID 4-cylinder overhead-cam engine with 3-speed manual floor-mounted transmission; new anodized-aluminum bumpers; front manual disc brakes with audible wear sensors; power ventilation system; full-foam seats with plaid cloth or knit vinyl upholstery; two-spoke steering wheel trimmed in soft vinyl on centre pad; electric windshield wipers; lift-up tailgate with vertical moldings; concealed storage area; cut-pile carpeting including cargo area; full-coil suspension with computer-selected springs; choice of 15 Magic-Mirror exterior colors.

Astre Safari Custom station wagon. All Astre Safari standard features plus: wood-grain bodyside panelling; Custom Interior; Custom Cushion steering wheel; adjustable driver's seat back; instrument panel assist handle; wheel trim decor.

LeMans Safari station wagons. Standard features include: 350 CID 2-bbl. V8 with 3-speed Turbo Hydra-matic transmission; new improved hydraulic bumper system with front bumper guards; lift-up tailgate with vertical moldings; power brakes with front discs/rear drums; full-foam seat construction with all-vinyl upholstery; rear-facing third seat in 3-seat model; tailgate ajar warning lamp; swing-out ventipanes in rear quarter windows and electric liftgate release in 3-seat model; vinyl-painted textured steel cargo floor; hidden storage compartment under cargo floor; double-panel roof with perforated inner acoustical panel; powered High/Low ventilation; simulated Flame Chestnut woodgrain on instrument panel and on doors; windshield-embedded antenna; semi-concealed windshield wipers; full-coil suspension with computer-selected springs; front and rear armrests; choice of 16 Magic-Mirror exterior colors.

Luxury LeMans Safari station wagon. All LeMans Safari standard features plus:

simulated woodgrain exterior panelling; Luxury LeMans grille and inner door panels; Custom Cushion steering wheel; Deluxe wheel covers; wheel opening moldings; added sound insulation; body-color outside door handles. Dual horns.

Laurentian Safari station wagons. Standard features include: 400 CID 4-bbl. V8 with 3-speed Turbo Hydra-matic transmission; improved variable-ratio power steering; power brakes with front discs/rear drums; new improved hydraulic bumper system; hidden storage compartment; disappearing glideaway tailgate with power-operated rear window that retracts into the roof; right-hand outside mirror; vertical moldings on rear end with reflex in outermost moldings; computer-selected springs with front coils and specific station wagon leaf spring rear construction; full-foam seats with all-vinyl trim; Deluxe steering wheel in matching interior color; cut-pile carpeting; powered High/Low ventilation system; hidden windshield wipers; simulated Flame Chestnut woodgrain panelling on instrument panel; choice of 16 Magic-Mirror exterior colors.

Catalina Safari station wagons. All Laurentian Safari standard features plus: two front ashtrays; additional sound insulation; additional convenience lamps; additional interior woodgrain; additional exterior moldings; windshield-embedded antenna.

Grand Safari station wagons. All Catalina Safari standard features plus: 455 CID 4-bbl. V8; Grand Ville grille and front end panels; Grande Ville interior vinyl trim plus new optional cloth trim; Custom Cushion steering wheel in matching interior color; electric clock; pedal trim; Deluxe wheel covers; wheel opening moldings; carpeted load floor; upgraded body insulation.

Note: all 1974 Pontiac station wagons are equipped with standard evaporative and exhaust emission controls.

Reassurance features

Occupant Protection

- Seat belts with pushbutton buckles for all passenger positions.
- Two front combination seat and shoulder belts for driver and right front passenger (with reminder light and buzzer and inertia reel).
- Two front seat head restraints.
- Energy-absorbing steering column.
- Passenger-guard door locks.
- Safety door latches and hinges.
- Folding seat back latches.
- Energy-absorbing padded instrument panel and front and intermediate seat back tops.
- Contoured windshield header.
- Thick laminate windshield.
- Padded sun visors.
- Safety armrests.
- Safety steering wheel.
- Side-Guard Beams.
- Contoured full roof inner panel.

Accident Prevention

- Side marker lights and reflectors (front side marker lights flash with directional signal).
- Parking lamps that illuminate with headlamps.
- Four-way hazard warning flasher.
- Backup lights.
- Lane change feature in direction signal control.
- Windshield defrosters, washer and dual speed wipers.
- Wide-view inside day/night* mirror (vinyl edged, shatter resistant glass and deflecting support). *Day/night feature optional on Astre.
- Outside rear view mirror (driver side and passenger side on full size wagons).
- Dual master-cylinder brake system with warning light.
- Starter Safety Switch.
- Dual-action safety latches on front-opening hoods.
- Improved bumper systems.

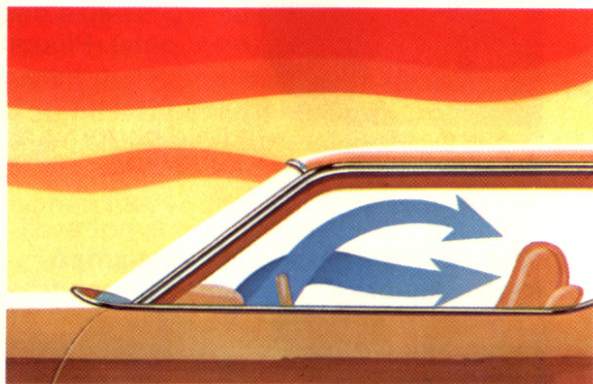
Anti-Theft

- Anti-theft ignition key warning buzzer.
- Anti-theft steering column lock.
- Inside hood latch release.

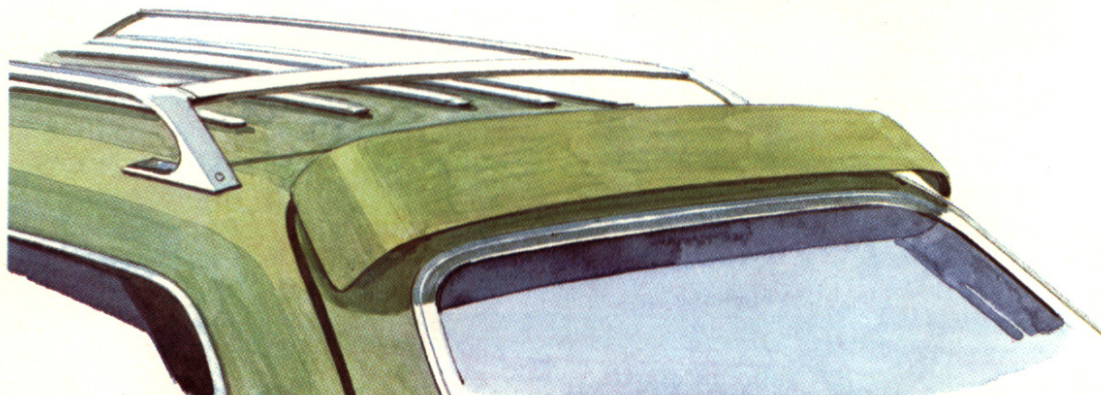
Options-Add your own personal touch

Express your individuality while adding even more to your pleasure, comfort and convenience. Enjoy your 1974 Pontiac Safari station wagon *your way*.

The equipment mentioned here are examples of the extra-cost items available to you. Unless otherwise noted, they may be ordered on all 1974 Safari wagons. Ask your salesman about other options not listed that may interest you.

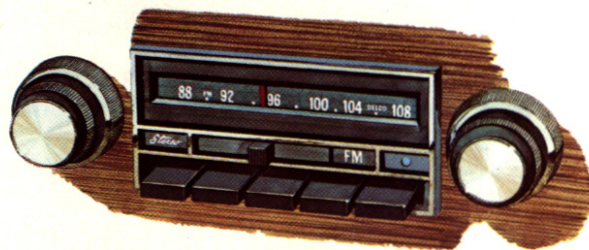


Air Conditioning. It works all year to keep you comfortable and free of humidity, dust and irritating pollen. Manual-control air conditioning is available on all wagons (power steering is recommended on a mid-size Safari). Automatic Temperature Control is also available on a full-size Safari.



Sound Systems. Astre offers an AM or AM/FM pushbutton radio and extra-cost rear speaker.

Mid-size and full-size wagons offer AM, AM/FM or AM/FM Stereo pushbutton radios—plus an integral AM or AM/FM radio with 8-track stereo tape player and multi-speaker system (3 on mid-size, 4 on full-size). Rear speakers come with the stereo systems and a rear speaker is available with the AM and AM/FM radios.

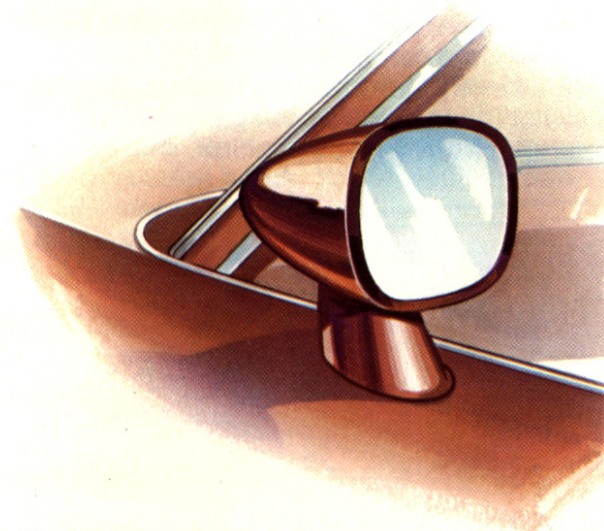


Roof Luggage Carrier. The bright chrome and stainless steel carrier installs permanently on all Pontiac station wagons. It stores a sizeable amount of luggage, allowing extra passenger space inside. Side rails for easy tie-down.

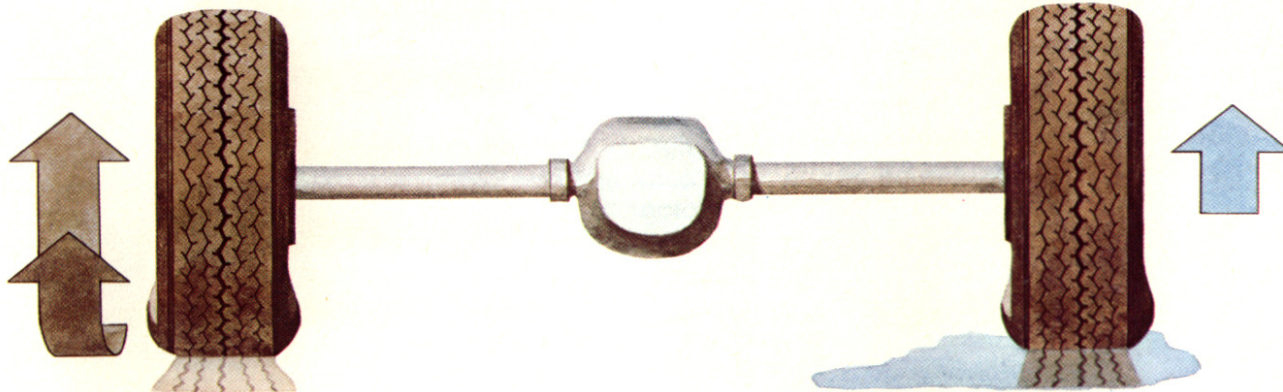
Rear Window Air Deflector. Astre and LeMans Safari only. Horizontal metal vane directs air stream onto the rear window to help keep it free of dust.



Protective Side Molding. Vinyl inserts in stainless steel help protect the sides of your wagon in parking lot situations. Not available with woodgrain panelling. Why not order door edge guards, too?

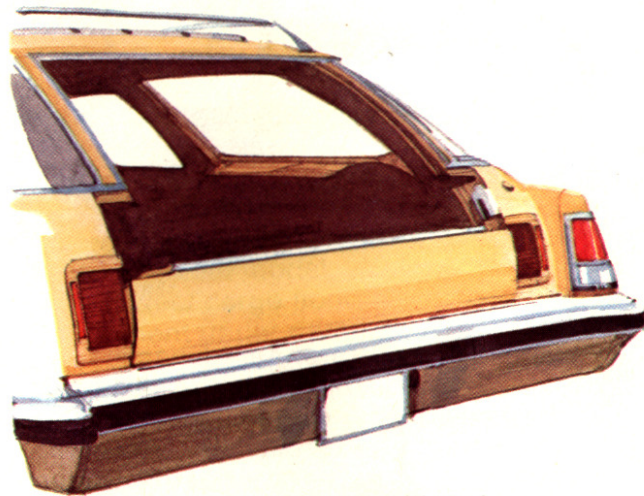


Custom Sport Mirrors. Aerodynamically-designed outside mirrors in the same color as the body of your wagon. Left-hand mirror is remote-controlled and you can have the right-hand mirror controlled from the driver's position. Right-hand mirror not available on Astre. (Left-hand included with Astre GT option.)

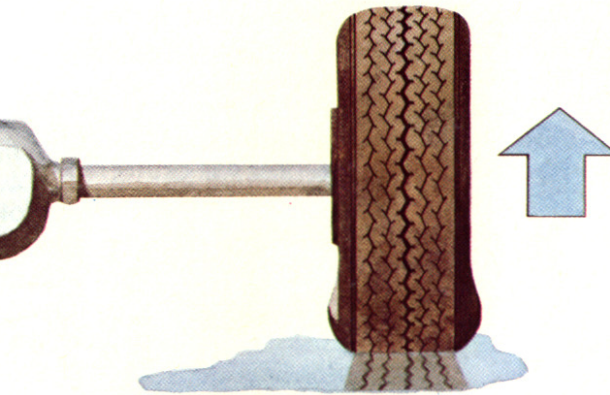


Safe-T-Track Rear Axle. A limited slip differential that transfers torque to the rear wheel that has the best traction. Helps give you sure handling when you hit a stretch of slippery road, mud or sand.

Power Tailgate. Full-size Safari wagons only. Tailgate can be lowered or raised with a key from outside, at the rear, or with a switch on the instrument panel. When operated from driver's position, shift lever

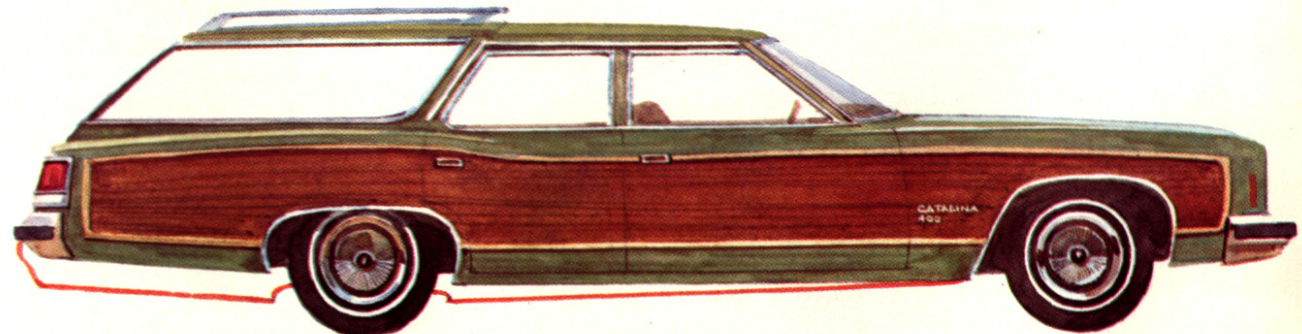
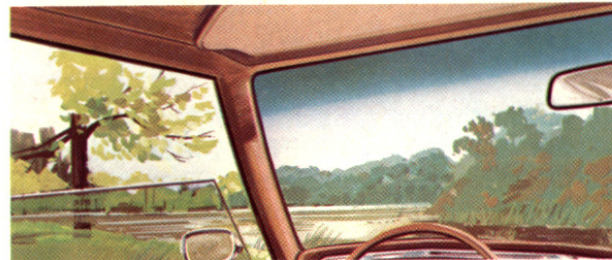


must be in "park" or "neutral" and ignition key in "on" or "accessory". Power-operated rear window is standard.



Liftgate Release. LeMans 2-seat Safari only (standard on 3-seat Safari). A handy time-saver. Shift lever and ignition key must be in positions as on full-size.

Tinted Glass. Soft-Ray tinted glass may be specified for all windows or just for the windshield. It helps reduce the effects of a hot sun. Tinted glass is recommended when you order air conditioning.



Radial Tires. Order radial tires on your LeMans Safari or full-size Safari and you get a ride and handling package with GM-specification whitewall steel-belted radial tires and a specially-tuned suspension including front and rear stabilizer bars (Full-size has front only), Pliacell shock absorbers, jounce restrictors and specific springs. For added performance along with the extra tread life and traction of radial ply tires.

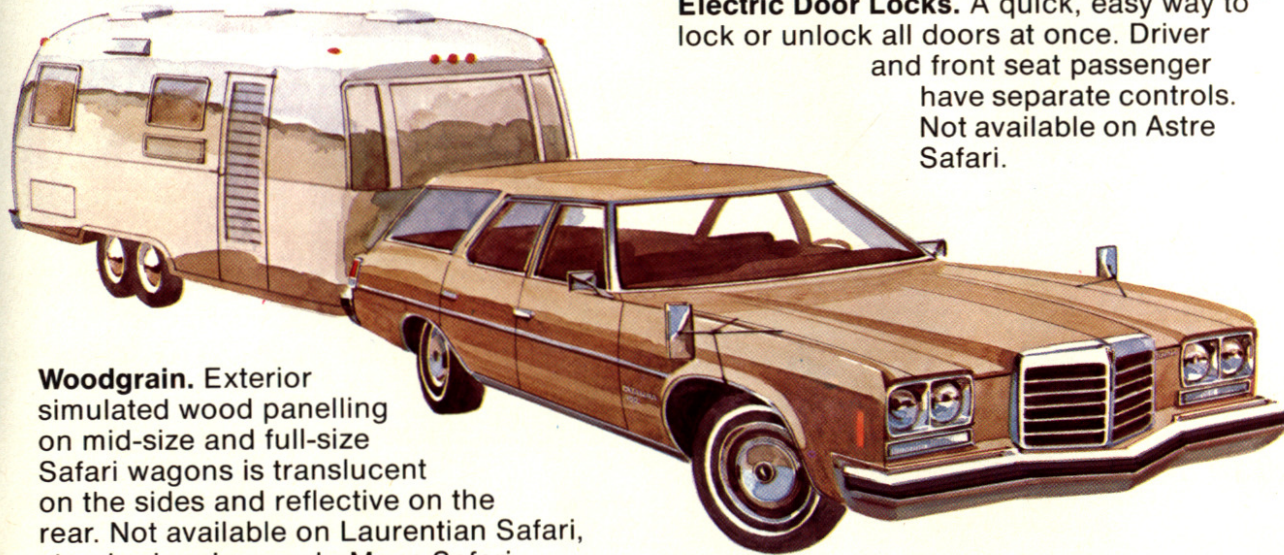
Radial-tuned suspension is not available on Astre Safari but white-stripe, steel-belted radial tires may be specified.

Automatic Cruise Control. Attain desired speed, touch the button on the end of the turn signal indicator and you'll hold that speed until you press the brake pedal (not available on Astre Safari).

Automatic Level Control. Automatically keeps your new Pontiac level under heavy loads. A vacuum-operated compressor expands air-bag shock absorbers to compensate for load weight and to help prevent bottoming out. Not available on Astre Safari.

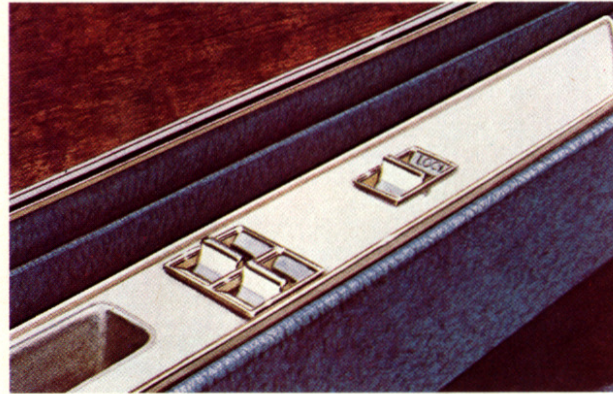
Trailer-towing. Pontiac offers a trailer-towing package designed specifically for the load weight of your trailer and the 1974 Safari wagon you'll be hauling it with. For heavy trailer-towing, only full-size Pontiacs are recommended. For medium-weight and light trailers, any full-size or mid-size Safari can be considered an exceptional hauler. Your dealer has a hitch accessory available for Astre Safari and he can recommend certain heavy-duty optional equipment if you plan to pull loads under 1,000 pounds.

Packages for full- and mid-size wagons can be built right in at the factory. For further information, consult Pontiac's special Trailer-towing Catalogue. Your salesman has your copy.



Woodgrain. Exterior simulated wood panelling on mid-size and full-size Safari wagons is translucent on the sides and reflective on the rear. Not available on Laurentian Safari, standard on Luxury LeMans Safari. Woodgrain siding is available on Astre Safari, standard on Safari Custom.

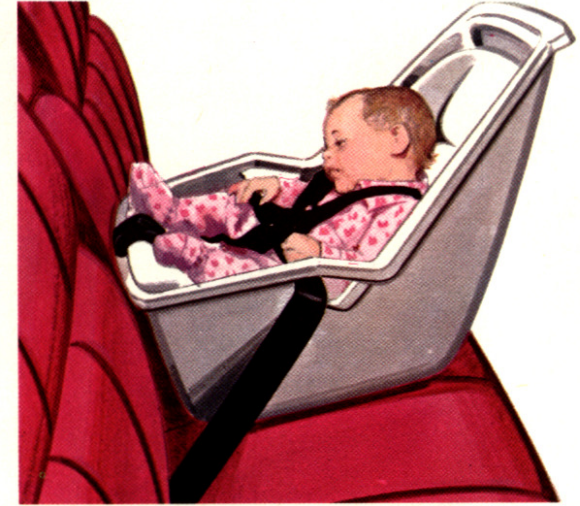
Rear Defroster. An electrically-heated system uses rows of thin wires embedded in the glass to help keep the rear window surface clear of ice, snow and fog. A forced-air blower system is also offered on full-size Safari wagons.



Power Windows. Open or close any window without leaving the driver's seat. The controls are at your fingertips—with individual controls for passengers. Not available on Astre.

Electric Door Locks. A quick, easy way to lock or unlock all doors at once. Driver and front seat passenger have separate controls. Not available on Astre Safari.

Love Seats. Buckle up your children, too. The Infant Love Seat and the Child Love Seat offer protection for the youngest travellers in your family and are built to GM specifications. The Infant Love Seat, for babies up to 20 pounds, is foam-padded and comfort-contoured, washable and includes built-in, easily-adjustable



restraining straps. Can be used outside the car as an infant carrier. The Child Love Seat has a built-in harness and raises children to window-viewing height. Both Love Seats have many features to help look after your smallest passengers. They are secured inside the car with conventional lap belts to hold the seat in case of sudden stops. Your salesman can tell you more about GM Love Seats.



Specifications

		ASTRE SAFARI	LUXURY LeMANS LeMANS SAFARI	LAURENTIAN SAFARI	CATALINA SAFARI	GRAND SAFARI
Body Styles		2-seat —	2-seat 3-seat	2-seat 3-seat	2-seat 3-seat	2-seat 3-seat
Engines	Standard Optional	140-1 Four 140-2 Four — —	350-2 V8 400-2 V8 400-4 V8 455-4 V8	400-4 V8 455-4 V8 — —	400-4 V8 455-4 V8 — —	455-4 V8 — — —
Transmission	Standard Optional	3-speed manual 4-speed manual Hydra-matic	Hydra-matic — —	Hydra-matic — —	Hydra-matic — —	Hydra-matic — —
Brakes—Power	Front Disc (dia.) Rear Drum (dia.)	10.0 in. 9.0 in.	11.0 in. 11.0 in.	11.7 in. 12.0 in.	11.7 in. 12.0 in.	11.7 in. 12.0 in.
Turning Diameter	Curb-to-Curb	33.0 ft.	41.6 ft.	43.6 ft.	43.6 ft.	43.6 ft.
Suspension		Full coil	Full coil	F-Coil R-Leaf	F-Coil R-Leaf	F-Coil R-Leaf
Frame		Unitized	Perimeter	Perimeter	Perimeter	Perimeter
Wheelbase		97.0 in.	116.0 in.	127.0 in.	127.0 in.	127.0 in.
Length		175.9 in.	216.0 in.	231.3 in.	231.3 in.	231.3 in.
Height		52.0 in.	55.0 in.	57.1 in.	57.5 in.	57.5 in.
Width		65.4 in.	77.9 in.	79.6 in.	79.6 in.	79.6 in.
Weight (2-seat)		2587 lbs.	4456 lbs.	5012 lbs.	5032 lbs.	5130 lbs.
Tread	Front Rear	55.2 in. 54.1 in.	61.5 in. 60.7 in.	64.1 in. 64.0 in.	64.1 in. 64.0 in.	64.1 in. 64.0 in.
Tires	Standard	A78-13	H78-14	L78-15	L78-15	L78-15
Wheel Size		13 x 5 in.	14 x 6 in.	15 x 6 in.	15 x 6 in.	15 x 6 in.
Road Clearance		4.6 in.	5.4 in.	5.6 in.	5.6 in.	5.6 in.
Headroom	Front Rear	38.4 in. 37.7 in.	38.8 in. 39.4 in.	39.6 in. 39.4 in.	39.6 in. 39.3 in.	39.6 in. 39.3 in.
Legroom	Front Rear	42.1 in. 32.8 in.	42.4 in. 36.8 in.	42.5 in. 37.9 in.	42.6 in. 39.4 in.	42.6 in. 39.4 in.
Shoulder Room	Front Rear	51.6 in. 49.5 in.	59.8 in. 58.9 in.	64.3 in. 63.5 in.	64.4 in. 63.5 in.	64.4 in. 63.5 in.
Hip Room	Front Rear	49.2 in. 42.5 in.	55.6 in. 56.6 in.	62.0 in. 62.2 in.	62.0 in. 62.2 in.	62.0 in. 62.2 in.
Fuel Tank Capacity		13.3 Imp. Gal.	18.3 Imp. Gal.	18.3 Imp. Gal.	18.3 Imp. Gal.	18.3 Imp. Gal.
Cargo Volume		50.2 cu. ft.	85.1 cu. ft.	106.4 cu. ft.	106.4 cu. ft.	106.4 cu. ft.

Engines

	140-1 four	140-2 four	350-2 V8	400-2 V8	400-4 V8	455-4 V8	
Displacement:	140	140	350	400	400	455	
H.P. @rpm (net)	Single Exhaust Dual Exhaust (LeMans only)	75@4400 N.A.	85@4400 N.A.	155@3600 N.A.	175@3600 190@4000	180@3800 ⁽¹⁾ 225@4000	215@3600 250@4000
Torque @rpm (net)	Single Exhaust Dual Exhaust (LeMans only)	115@2400 N.A.	122@2400 N.A.	275@2400 N.A.	315@2000 330@2400	290@2400 ⁽²⁾ 330@2800	355@2400 380@2800
Compression Ratio		8.0:1	8.0:1	7.6:1	8.0:1	8.5:1 ⁽³⁾	8.0:1
Carburetion		1 BBL.	2 BBL.	2 BBL.	2 BBL.	4 BBL.	4 BBL.
Fuel		Regular	Regular	Regular	Regular	Regular	Regular

LeMans models—⁽¹⁾200@4000; ⁽²⁾320@2400; ⁽³⁾8.0:1

The illustrations in this catalogue do not necessarily show standard colors, materials and equipment. General Motors of Canada Limited reserves the right to make changes at any time without notice, in prices, colors, materials, equipment, specifications and models, and also to discontinue models. This right may be exercised without incurring any responsibility with regard to cars previously sold.



GENERAL MOTORS OF CANADA LIMITED, OSHAWA, ONTARIO