

JEEP GRAND CHEROKEE

BUYER'S GUIDE
FEBRUARY 2019



Jeep[®]



Jeep GRAND CHEROKEE

MODEL HIGHLIGHTS*

LAREDO 4x2

Engine

3.6L V6 Petrol
213 kW 347 Nm

Transmission

8-Speed Automatic
Rear Wheel Drive

Maximum Towing Capacity ⁽¹⁰⁾

Braked Trailer
3.6L 4x2 - 1,600kg

Fuel Consumption ⁽¹⁾

Combined (L/100km)
3.6L 4x2 - 9.9

Features:

- 3.6L Pentastar V6 Engine
- 8-Speed Automatic Transmission
- 18-Inch Alloy Wheels
- Uconnect 7-Inch Touchscreen
- Apple Carplay
- Android Auto
- ParkView Reverse Parking Camera
- ParkSense Front & Rear Park Assist
- 7 Airbags & 5-Star ANCAP Rating ⁽²⁾
- Bi-Xenon Headlamps
- 7-Inch Instrument Cluster Display
- 8-Way Power, Heated Front Seats
- Keyless Entry & Vehicle Start Button
- Dual-Zone Automatic Climate Control
- Leather Wrapped Steering Wheel
- Acoustic Windshield & Front Door Glass

LAREDO 4x4

Engine

3.6L V6 Petrol
213 kW 347 Nm

3.0L V6 Turbo Diesel
184 kW 570 Nm

Transmission

8-Speed Automatic
4x4

Maximum Towing Capacity ⁽¹⁰⁾

Braked Trailer
3.6L 4x4 - 2,812kg
3.0L 4x4 - 3,500kg

Fuel Consumption ⁽¹⁾

Combined (L/100km)
3.6L 4x4 - 10.0
3.0L 4x4 - 7.5

Features

(in addition, or replacing Laredo 4x2):

- Available 3.0L CRD Engine
- Available 3,500kg Towing Capacity ⁽¹⁰⁾
- Jeep Quadra-Trac II 4x4 System
- Two Speed Transfer Case
- Jeep Selec-Terrain Control
- Hill Descent Control

LIMITED

Engine

3.6L V6 Petrol
213 kW 347 Nm

3.0L V6 Turbo Diesel
184 kW 570 Nm

Transmission

8-Speed Automatic
4x4

Maximum Towing Capacity ⁽¹⁰⁾

Braked Trailer
3.6L 4x4 - 2,812kg
3.0L 4x4 - 3,500kg

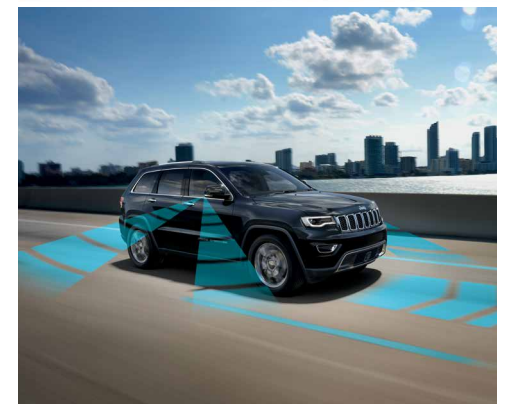
Fuel Consumption ⁽¹⁾

Combined (L/100km)
3.6L 4x4 - 10.0
3.0L 4x4 - 7.5

Features

(in addition, or replacing Laredo 4x4):

- 20-Inch Alloy Wheels
- Uconnect 8.4-Inch Touchscreen
- Satellite Navigation
- Capri Leather Seats
- 9-Speaker Alpine® Sound System
- Forward Collision Warning
- Lane Departure Warning
- Blind Spot Monitoring
- Rear Cross Path Detection
- Adaptive Cruise Control
- Parallel and Perpendicular Park Assist
- Advanced Brake Assist System
- Power Liftgate
- Deep Tinted Privacy Glass
- Heated Steering Wheel
- Radio, Driver Seat & Mirror Memory



Jeep GRAND CHEROKEE

MODEL HIGHLIGHTS*

TRAILHAWK

Engine

3.0L V6 Turbo Diesel
184 kW 570 Nm

Transmission

8-Speed Automatic
4x4

Maximum Towing Capacity ⁽¹⁰⁾

Braked Trailer
3.0L 4x4 - 3,500kg

Fuel Consumption ⁽¹⁾

Combined (L/100km)
3.0L 4x4 - 7.5

Features

(in addition, or replacing Limited):

- Jeep Quadra-Drive II 4x4 System
- Jeep Quadra-Lift Air Suspension
- Rear Electronic Limited Slip Differential
- Selec-Speed with Hill Ascent Control
- Four Underbody Skid Plates
- 18-Inch Off-Road Alloy Wheels
- All Terrain Tyres
- Nappa Leather Seats with Suede Inserts
- Ventilated Front Seats
- Unique Front & Rear Facia
- Black Anti-Glare Hood Decal

OVERLAND

Engine

3.0L V6 Turbo Diesel
184 kW 570 Nm

Transmission

8-Speed Automatic
4x4

Maximum Towing Capacity ⁽¹⁰⁾

Braked Trailer
3.0L 4x4 - 3,500kg

Fuel Consumption ⁽¹⁾

Combined (L/100km)
3.0L 4x4 - 7.5

Features

(in addition, or replacing Limited):

- Jeep Quadra-Drive II 4x4 System
- Jeep Quadra-Lift Air Suspension
- Rear Electronic Limited Slip Differential
- Dual-Pane Panoramic Sunroof
- Nappa Leather Seats
- Ventilated Front Seats
- Interior Metal Package (Aluminum Shifter, Steering Wheel, I/P Bezel)

SRT

Engine

6.4L V8 Petrol
344 kW 624 Nm

Transmission

8-Speed Automatic
4x4

Performance

0-100km/h in 4.9 seconds

Fuel Consumption ⁽¹⁾

Combined (L/100km)
6.4L 4x4 - 14.0

Features:

- 6.4L HEMI V8
- Brembo® High Performance Brake System
- Adaptive Damping Suspension
- Quadra-Trac Active on Demand 4x4 System
- Rear Electronic Limited Slip Differential
- SRT Performance Bonnet with Functional Vents
- SRT Flat-Bottomed Steering Wheel
- SRT Leather and Suede Seats
- Nappa Leather Door Trim
- SRT Performance Pages
- Launch Control
- Black Velour Floor Mats with SRT Logo
- Performance Instrument Cluster with 300kp/h Speedometer
- Piano Black Interior Accents

TRACKHAWK

Engine

6.2L V8 Petrol
522 kW 868 Nm

Transmission

8-Speed Automatic
4x4

Performance

0-100km/h in 3.7 seconds

Fuel Consumption ⁽¹⁾

Combined (L/100km)
6.2L 4x4 - 16.8

Features:

- The Most Powerful V8 SUV Ever
- 6.2L Hellcat Supercharged Hemi V8
- 3.7 Second 0-100km/h
- 11.6 Second Quarter Mile
- 289km/h Top Speed
- Largest Front Brakes Ever Fitted to a Jeep
- Yellow Brembo Brake Calipers
- Quad Exhaust Tips
- Unique Fascia for Optimized Airflow and Control



Jeep GRAND CHEROKEE

SPECIFICATIONS*

Comfort & Convenience		Code	Laredo 4x2	Laredo 4x4	Limited	Trailhawk	Overland	SRT	Trackhawk	Capability & Performance (Continued)		Code	Laredo 4x2	Laredo 4x4	Limited	Trailhawk	Overland	SRT	Trackhawk
Dual-Zone Climate Control	HAF	•	•	•	•	•	•	•	•	Launch Control	-	-	-	-	-	-	-	•	•
Push Button Start	GX4	•	•	•	•	•	•	•	•	SRT Performance Instrument Cluster	LA7	-	-	-	-	-	-	•	•
Remote Proximity Keyless Entry	GXD	•	•	•	•	•	•	•	•	Red Brembo® High Performance Brakes	-	-	-	-	-	-	-	•	-
Remote Central Locking	GXM	•	•	•	•	•	•	•	•	Yellow Brembo® High Performance Brakes	-	-	-	-	-	-	-	-	•
Power Windows	JP3	•	•	•	•	•	•	•	•	Active Damping Suspension	SMC	-	-	-	-	-	-	•	•
Power Folding Side Mirrors	LER	•	•	•	•	•	•	•	•	High Performance Suspension	SDX	-	-	-	-	-	-	•	-
Power Bootlid Release	JRC	-	-	•	•	•	•	•	•	Competition Suspension	SDK	-	-	-	-	-	-	-	•
Remote Start	XC5	-	-	•	•	•	•	•	•	Jeep Off Road Pages	JAZ	-	○	•	•	•	•	-	-
Heated Front Seats	JPM	•	•	•	•	•	•	•	•	Jeep Performance Pages	JAV	-	-	-	-	-	-	•	•
Heated Second Row Seats	JPZ	-	-	○	•	•	•	•	•	Safety, Security & Driver Assistance		Code	Laredo 4x2	Laredo 4x4	Limited	Trailhawk	Overland	SRT	Trackhawk
Heated Steering Wheel	NHS	-	-	•	•	•	•	•	•	Parkview™ Reverse Parking Camera	XAC	•	•	•	•	•	•	•	•
Ventilated Front Seats	CAJ	-	-	○	•	•	•	•	•	ParkSense® Front & Rear Parking Sensors	XH4	•	•	•	•	•	•	•	•
Auto Dimming Rear View Mirror - Interior	GNK	•	•	•	•	•	•	•	•	7 Airbags (2 Front, 2 Side Curtain, 2 Side Seat, 1 Driver Knee)	-	•	•	•	•	•	•	•	•
Auto Dimming Side Mirrors	LEU	-	-	•	•	•	•	•	•	Forward Collision Warning Plus	LSU	-	-	•	•	•	•	•	•
Automatic Headlamps	LMG	•	•	•	•	•	•	•	•	Lane Departure Warning Plus	LAS	-	-	•	•	•	•	•	•
Automatic High Beam Control	LMS	•	•	•	•	•	•	•	•	Blind Spot Monitoring	XAN	-	-	•	•	•	•	•	•
Rain Sensitive Windshield Wipers	JHC	•	•	•	•	•	•	•	•	Rear Cross Path Detection	-	-	-	•	•	•	•	•	•
Tilt & Telescopic Steering Wheel Adjust - Manual	SUD	•	•	-	-	-	-	-	-	Parallel & Perpendicular Park Assist	XH5	-	-	•	•	•	•	•	•
Tilt & Telescopic Steering Wheel Adjust - Power	SUB	-	-	•	•	•	•	•	•	Advanced Brake Assist	BGG	-	-	•	•	•	•	•	•
Radio/Driver Seat/Mirror Memory	LEW	-	-	•	•	•	•	•	•	Cruise Control - Adaptive	NH3	-	-	•	•	•	•	•	•
Rear Window Defroster	GFA	•	•	•	•	•	•	•	•	Cruise Control	NHM	•	•	•	•	•	•	•	•
Side Exterior Mirrors with Defrost	NHJ	•	•	•	•	•	•	•	•	Tyre Pressure Monitoring	XGM	•	•	•	•	•	•	•	•
Cargo Area Tie Down Loops	CKT	•	•	•	•	•	•	•	•	Active Head Restraints	CBD	•	•	•	•	•	•	•	•
Cargo Tonneau	CSC	•	•	•	•	•	•	•	•	Traction Control	-	•	•	•	•	•	•	•	•
Capability & Performance		Code	Laredo 4x2	Laredo 4x4	Limited	Trailhawk	Overland	SRT	Trackhawk	Ready Alert Braking	BHD	•	•	•	•	•	•	•	•
Quadra-Trac II 4x4 System	DKA	-	•	•	-	-	-	-	-	Rain Brake Support	BHC	•	•	•	•	•	•	•	•
Quadra-Drive II 4x4 System	AWB	-	○	-	•	•	-	-	-	Electronic Stability Control (ESC)	BNB	•	•	•	•	•	•	•	•
Quadra-Trac Active On Demand 4x4 System	DHB	-	-	-	-	-	•	•	•	Trailer Sway Control	BNT	•	•	•	•	•	•	•	•
Quadra-Lift Air Suspension	SER	-	○	-	•	•	-	-	-	Enhanced Accident Response System	LSE	•	•	•	•	•	•	•	•
Selec-Terrain® Traction Management System	XAB	-	•	•	•	•	•	-	-	Front Passenger Seat Belt Alert	LAX	•	•	•	•	•	•	•	•
Selec-Trac® System	XAF	-	-	-	-	-	•	•	•	ISOFIX	CGU	•	•	•	•	•	•	•	•
Two Speed Transfer Case	-	-	•	•	•	•	-	-	-	Child Seat Upper Tether Anchorages	CF4	•	•	•	•	•	•	•	•
Rear Electronic Limited Slip Differential	DSF	-	○	-	•	•	•	•	•	Security Alarm	LSB	•	•	•	•	-	-	-	-
Hill Hold Control	BNG	•	•	•	•	•	•	•	•	Premium Security Alarm	LSD	-	-	-	-	•	•	•	•
Hill Descent Control	BNH	-	•	•	-	•	-	-	-	Engine Immobiliser	GXX	•	•	•	•	•	•	•	•
Hill Ascent Control	BNK	-	○	-	•	○	-	-	-	Selectable Steering Modes	XX7	•	•	•	•	•	•	•	•
4 Underbody Skid Plates	ADL	-	○	-	•	○	-	-	-	Capless Power Locking Fuel Filler Door	XJM	•	•	•	•	•	•	•	•
Heavy Duty Engine Cooling	NMC	-	•	•	•	•	•	•	•										

Standard (•) Option (○) Not Offered (-)

Jeep GRAND CHEROKEE

SPECIFICATIONS*

Audio & Connectivity	Code	Laredo 4x2	Laredo 4x4	Limited	Trailhawk	Overland	SRT	Trackhawk
Uconnect® 7.0 (with AM/FM Radio, Bluetooth® Phone/Audio)	UJG							
7.0-inch Touchscreen Display	RFJ	•	•	-	-	-	-	-
Apple Carplay	RFP							
Android Auto	RF5							
Digital Radio (DAB+)	RS9							
Uconnect® 8.4 (with AM/FM Digital Radio, Bluetooth® Phone/Audio and Navigation)	UJQ							
8.4-inch Touchscreen Display	RFL							
Satellite Navigation	JLN	○	○	•	•	•	•	•
Apple Carplay	RFP							
Android Auto	RF5							
Digital Radio (DAB+)	RS9							
6 Speakers	RCG	•	•	-	-	-	-	-
9 Speaker Alpine Audio System Including Subwoofer	RC3	-	-	•	•	•	•	-
506 Watt Amplifier	RFD							
19 Speaker Harman Kardon Audio System 825W Amplifier	AJE	-	-	-	-	○	○	•
RDH								
Active Noise Cancelling	JLW	-	-	•	•	•	•	•
Rear DVD/Blu-Ray Entertainment Center	AEK	-	-	-	-	○	-	-
Media Hub (2 x USB / 1 x AUX)	RS6	•	•	•	•	•	•	•
Steering Wheel Mounted Audio Controls	RDZ	•	•	•	•	•	•	•
12V Power Outlet - Front	JKP	•	•	•	•	•	•	•
12V Power Outlet - Rear	JJM	•	•	•	•	•	•	•
Interior	Code	Laredo 4x2	Laredo 4x4	Limited	Trailhawk	Overland	SRT	Trackhawk
Steering Wheel - Leather Wrapped	SCV	•	•	•	•	-	-	-
Steering Wheel - Wood & Leather Wrapped	SCW	-	-	-	-	•	-	-
Steering Wheel - Leather Wrapped Flat Bottomed	SCC	-	-	-	-	-	•	•
Steering Wheel Mounted Paddle Shift	XBQ	•	•	•	•	•	•	•
Leather Wrapped Shift Knob	-	•	•	•	•	•	•	•
Leather Wrapped Instrument Panel & Center Armrest	XDA	-	-	-	-	•	•	•
Interior Metal Package (Aluminum Shifter, Steering Wheel, I/P Bezel)	AFY	-	-	○	-	•	•	•
Nappa Leather Door Trim	CTM	-	-	-	-	-	•	•
Power 8-Way Driver/Passenger Seats	-	•	•	•	•	•	•	•
Power 4-Way Driver/Passenger Lumbar	JRN	•	•	•	•	•	•	•
Rear Seat - 60/40 Split Folding	CFN	•	•	•	•	•	•	•
Illuminated Entry	LAC	•	•	•	•	•	•	•
Front & Rear Interior LED Lamps	LBR	•	•	•	•	•	•	•
Floor Mats - Carpeted	CLX	•	•	•	-	•	-	-

Interior (Continued)	Code	Laredo 4x2	Laredo 4x4	Limited	Trailhawk	Overland	SRT	Trackhawk
Floor Mats - All Weather	CWA	-	-	-	•	-	-	-
Floor Mats - Luxury Berber	CCG	-	-	-	-	-	•	•
Dual Remote USB Port (Rear of centre console, charge only)	RS4	-	-	•	•	•	•	•
Illuminated Cupholders	CWP	•	•	•	•	•	•	•
Exterior	Code	Laredo 4x2	Laredo 4x4	Limited	Trailhawk	Overland	SRT	Trackhawk
HID Headlights (Bi-Xenon)	LM2	•	•	•	•	•	-	-
HID Headlights (Adaptive, Bi-Xenon)	LMQ	-	-	-	-	-	•	•
LED Fog Lamps	-	•	•	•	•	•	•	-
LED Daytime Running Headlamps	LMZ	•	•	•	•	•	•	•
LED Tail Lamps	LAY	•	•	•	•	•	•	•
Roof Rails	-	•	•	•	•	•	-	-
Integrated Liftgate Rear Spoiler	MXR	•	•	•	•	•	•	•
Dual-Pane Panoramic Sunroof	GWJ	-	-	○	○	•	○	•
Deep Tint Sunscreen Glass #	GEG	-	-	•	•	•	•	•
Acoustic Windshield	GAK	•	•	•	•	•	•	•
Acoustic Front Door Glass	GAP	•	•	•	•	•	•	•
Acoustic Rear Windscreen Glass	GAH	-	-	-	-	-	•	•
Rear Window Wiper/Washer	JHB	•	•	•	•	•	•	•
Side Window Surrounds - Bright	MMP	•	•	•	-	•	-	-
Side Window Surrounds - Dark	MMR	-	-	-	•	-	•	•
Door Handles - Body Colour	MNK	•	•	-	•	-	•	•
Door Handles - Bright	MNC	-	-	•	-	•	-	-
Exterior Mirrors - Body Colour	LEP	•	•	•	-	•	•	•
Exterior Mirrors - Neutral Gray	-	-	-	-	•	-	-	-
Exterior Mirror Courtesy Lamps	LEC	-	-	•	-	•	•	•
Body Colour Grille - Bright Surround	MFN	•	•	•	-	•	-	-
Body Colour Grille - Neutral Gray Surround	MF6	-	-	-	•	-	-	-
Black Grille - SRT	MFK	-	-	-	-	-	•	•
Black Cladding	MRW	•	•	•	•	-	-	-
Body Colour Cladding	MRV	-	-	-	-	•	•	•
Body Colour Shark Fin Antenna	RHC	•	•	•	•	•	•	•
Trail Rated Badging	M1E	-	○	-	•	○	-	-
Black Hood Decal	MGV	-	-	-	•	-	-	-
Alloy Wheels 18-Inch	-	•	•	-	•	-	-	-
Alloy Wheels 20-Inch	-	-	-	•	-	•	•	•

(#) Deep Tint Sunscreen Glass applies to rear passenger and rear cargo windows only. Front passenger windows and windscreen are not tinted.

Standard (•) Option (○) Not Offered (-)

Jeep GRAND CHEROKEE

GROUPS & OPTIONS*

	Code	Comments	Laredo 4x2	Laredo 4x4	Limited	Trailhawk	Overland	SRT	Trackhawk
Off-Road Adventure Group	AWY								
Quadra-Drive II 4x4 System	AWB								
230mm Rear Axle	DR1								
Electronic Limited Slip Differential Rear Axle	DSF								
Quadra-Lift™ Air Suspension	SER	Only Available on Diesel Variants							
Trailer Tow Preparation Group ⁽¹⁰⁾	AHC								
Rear Load Levelling Suspension	SES								
220 Amp Alternator	BAJ								
Heavy Duty Engine Cooling	NMC	Quadra-Drive & Quadra-Lift standard on Overland	-	O	-	S	O	-	-
Skid Plate Group	ADL								
Fuel Tank Skid Plate Shield	XEE								
Transfer Case Skid Plate Shield	XEF	Trailer Tow Preparation Group ⁽¹⁰⁾ standard on 3.0L Diesel variants							
Front Suspension Skid Plate	XEU								
Underbody Skid Plate	XF3								
Selec-Speed Control	BNK								
18-Inch Alloy Wheels	WCT								
265/60R18 Tyres	TKH								
Trail Rated Badge	MT2								
Uconnect 8.4-Inch with Satellite Navigation	UJQ								
Satellite Navigation	JLN								
Instrument Cluster with Jeep Off-Road Pages	JAZ								
8.4-Inch Touchscreen Display	RFL	-	O	O	S	S	S	S	S
Android Auto	RF5								
Apple Carplay	RFP								
Digital Audio Broadcasting	RS9								
Integrated Voice Command with Bluetooth	XRB								
Interior Metal Package	AFY								
Instr. Panel Aludium Linear Bezel	JB2								
Alum Painted Steering Wheel Bezel	JEH	-	-	-	O	-	S	-	-
Aluminum Lithograph Shifter Bezel	JND								
Nappa Leather Trim Package	AHN								
Nappa Leather Seats with Perforated Inserts	*DL								
Heated Second Row Seats	JPZ	-	-	-	O	-	S	-	-
Ventilated Front Seats	CAJ								
Rear DVD Entertainment Center	AEK								
Blu-Ray Compatible Dual Screen Video	RF6	m/h RCA	-	-	-	-	O	-	-
Rear Seat Video System	XRV								
19 Speaker High Performance Audio	RCA								
		m/h AEK	-	-	-	-	O	-	-
Single Pane Power Sunroof	GWA								
		NAW: GWJ	O	O	-	-	-	-	-
Dual Pane Panoramic Sunroof	GWJ								
		NAW: GWA	-	-	O	O	S	-	-

Option (O) Standard (S) Not Available (-) Must Have (m/h) Not Available With (NAW)

Jeep GRAND CHEROKEE

GROUPS & OPTIONS*

	Code	Comments	Laredo 4x2	Laredo 4x4	Limited	Trailhawk	Overland	SRT	Trackhawk
SRT Premium Package Dual Pane Panoramic Sunroof 19-Speaker Harman Kardon Audio System 825W Amplifier	GWJ AJE RDH	-	-	-	-	-	-	O	S
SRT - Signature Leather Wrapped Interior Package Black Laguna Leather Seats Leather Wrapped Lower Panels Laguna Leather Door Trim	AJD LSX9 CCB CTX	SRT m/h: SRT Premium Package	-	-	-	-	-	O	-
Trackhawk - Signature Leather Wrapped Interior Package Laguna Leather Seats Leather Wrapped Lower Panels Laguna Leather Door Trim	AJD *W8 CCB CTX	-	-	-	-	-	-	-	O
20-Inch Light-Weight Forged Alloy Wheels	WP4	m/h: TWC	-	-	-	-	-	O	O
Pirelli P-Zero 3 Season Tyre	TWC	m/h: WP4	-	-	-	-	-	O	O

Option (O) Standard (S) Not Available (-) Must Have (m/h) Not Available With (NAW)

WHEELS*



WCT - 18-Inch Alloy Wheels
(Standard - Laredo)



WRA - 20-Inch Polished / Tech
Grey Alloy Wheels
(Standard - Limited & Overland)



WCV - 18-Inch Alloy Wheels
(Standard - Trailhawk)



WPJ - 20-Inch Forged Alloy
Wheels
(Standard - SRT)



WFY - 20-Inch Forged Polished
Face Alloy Wheels
(Standard - Trackhawk)



WP4 - 20-Inch Light-Weight
Forged Alloy Wheels
(Option - SRT & Trackhawk)

Jeep GRAND CHEROKEE

EXTERIOR COLOUR GUIDE*



PW7 - Bright White (Clear Coat)
Standard



PSC - Billet Silver (Metallic)
Option



PAU - Granite Crystal (Metallic)
Option



PRV - Velvet Red (Pearl)
Option



PXJ - Diamond Black Crystal (Pearl)
Option



PHR - Sangria (Metallic)
Option



PUW - Walnut Brown (Metallic)
Option



PBF - Slate Blue (Pearl)
Option



PFQ - Green Metallic
Option



PDN - Sting Grey (Metallic)
Option



PRM - Redline (Pearl)
Option



PBU - True Blue (Pearl)
Option



PWD - Ivory (Tri-Coat)
Option

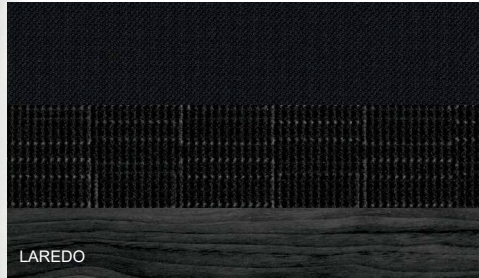


PSQ - Rhino (Clear Coat)
Option

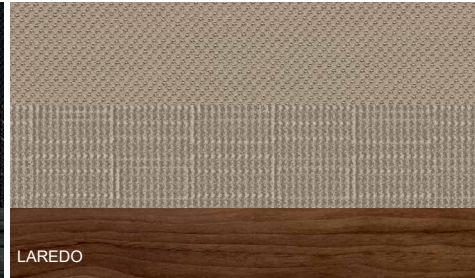
Jeep GRAND CHEROKEE

INTERIOR TRIM GUIDE*

LAREDO

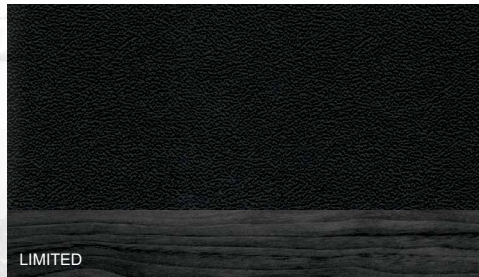


A5X9 - Black Cloth
(Standard - Laredo)



A5XL - Black & Light Frost Beige Cloth
(No Cost Option - Laredo)

LIMITED



CJX9 - Black Capri Leather
(Standard - Limited)



CJXL - Black & Light Frost Beige Capri Leather
(No Cost Option - Limited)

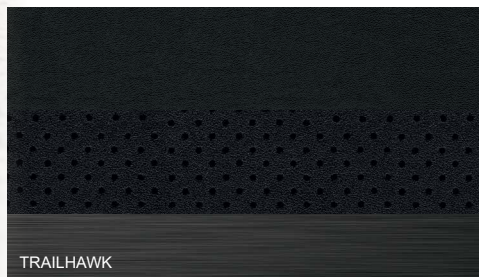


DLX9 - Black Nappa Leather
(Option - Limited)



DLXL - Black & Light Frost Beige Nappa Leather
(Option - Limited)

TRAILHAWK



THXC - Black Nappa Leather with Suede & Red
Accent Stitch
(Standard - Trailhawk)

Jeep GRAND CHEROKEE

INTERIOR TRIM GUIDE*

OVERLAND



GLX9 - Black Nappa Leather
(Standard - Overland)

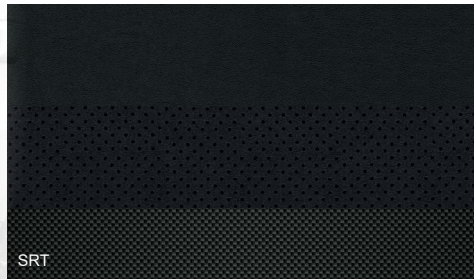


GLU5 - Brown Nappa Leather
(No Cost Option - Overland)

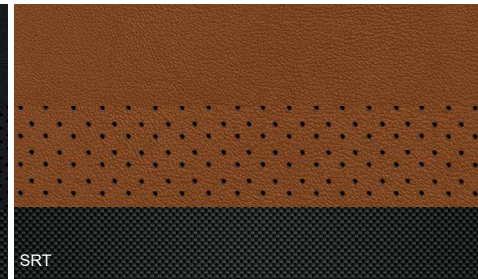


GLUL - Jeep Brown & Light Frost Beige Nappa
Leather
(No Cost Option - Overland)

SRT



DZX9 - Black Nappa Leather with Suede
(Standard - SRT)

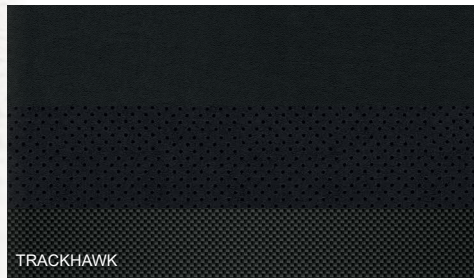


DZVX - Black & Sepia Nappa Leather with Suede
(No Cost Option - SRT)

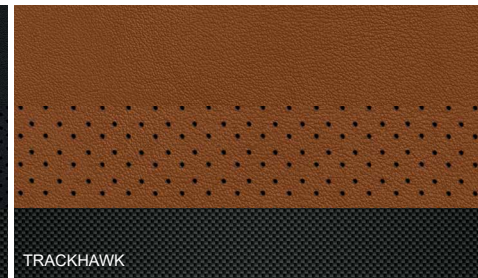


LSX9 - Black Laguna Leather
(Option - SRT)

TRACKHAWK



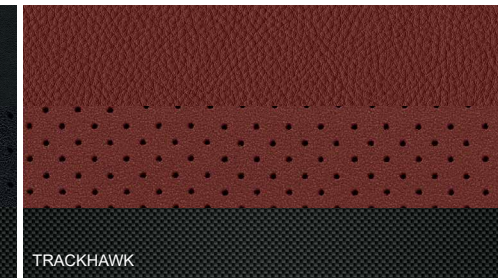
SLX9 - Black Nappa Leather & Suede
(Standard - Trackhawk)



SLXV - Black & Sepia Nappa Leather & Suede
(No Cost Option - Trackhawk)



W8X9 - Black Laguna Leather
(Option - Trackhawk)



W8X6 - Black & Dark Ruby Red Laguna Leather
(Option - Trackhawk)

Jeep GRAND CHEROKEE

COLOUR & TRIM MATRIX*

		Laredo 4x2		Laredo 4x4		Limited				Trailhawk	Overland			SRT			SRT Trackhawk			
Option Code		A5X9	A5XL	A5X9	A5XL	CJX9	CJXL	DLX9	DLXL	THXC	GLX9	GLU5	GLUL	DZX9	DZVX	LSX9	SLX9	SLVX	W8X9	W8X6
Seats	Material	Cloth		Cloth		Capri Leather		Nappa Leather		Nappa Leather with Suede	Nappa Leather			Nappa Leather with Suede		Laguna Leather	Nappa Leather		Laguna Leather	
	Colour	Black	Black & Light Frost Beige	Black	Black & Light Frost Beige	Black	Black & Light Frost Beige	Black	Black & Light Frost Beige	Black/Ruby Red	Black	Jeep Brown	Black & Light Frost Beige	Black	Black & Sepia	Black	Black	Black & Sepia	Black	Black & Dark Ruby Red
Dashboard Insert	Material	Walnut-Look Appliqué		Walnut-Look Appliqué		Black Rose		Black Rose		Brushed Piano Appliqué	High-Gloss Wood	Open-Pore Wood	Carbon Fibre			Carbon Fibre				
	Colour	Black	Brown	Black	Brown	Black	Brown	Black	Brown	Black	Black	Brown	Brown	Gloss Black		Matte Black	Black with Silver Thread			
Steering Wheel		Leather Wrapped		Leather Wrapped		Leather Wrapped		Leather Wrapped		Leather Wrapped	Wood & Leather Wrapped			Leather Wrapped Flat-Bottomed			Leather Wrapped Flat-Bottomed			
Headliner		Black	Light Frost Beige	Black	Light Frost Beige	Black	Light Frost Beige	Black	Light Frost Beige	Black	Black		Light Frost Beige	Black			Black			
Seat Belts		Black		Black		Black				Black	Black			Black			Red	Black	Red	
Exterior Colour																				
Bright White (PW7)		•	•	•	•	•	•	•	•	•	•	•	•	•	•	•	•	•	•	•
Billet Silver (PSC)		•	•	•	•	•	•	•	•	•	•	•	•	•	•	•	•	•	•	•
Granite Crystal (PAU)		•	-	•	-	•	•	•	•	•	•	•	•	•	•	•	•	•	•	•
Velvet Red (PRV)		•	•	•	•	•	•	•	•	•	•	•	•	•	•	•	•	•	•	•
Diamond Black Crystal (PXJ)		•	•	•	•	•	•	•	•	•	•	•	•	•	•	•	•	•	•	•
Sangria (PHR)		-	-	-	-	•	•	•	•	-	•	•	•	-	-	-	-	-	-	-
Walnut Brown (PUW)		-	-	-	-	•	•	•	•	-	•	•	•	-	-	-	-	-	-	-
Slate Blue (PBF)		-	-	-	-	•	•	•	•	•	•	•	•	•	•	•	-	-	-	-
Green Metallic (PFQ)		-	-	-	-	-	-	-	-	•	-	-	-	•	•	•	-	-	-	-
Sting Grey (PDN)		-	-	-	-	-	-	-	-	•	-	-	-	•	•	•	-	-	-	-
Redline (PRM)		-	-	-	-	-	-	-	-	•	-	-	-	•	•	•	•	•	•	•
True Blue (PBU)		-	-	-	-	-	-	-	-	-	-	-	-	-	-	-	•	•	•	•
Ivory (PWD)		-	-	-	-	-	-	-	-	-	•	•	•	•	•	•	•	•	•	•
Rhino (PSQ)		-	-	-	-	-	-	-	-	-	-	-	-	-	-	-	•	•	•	•

Available (•) Not Offered (-)

Jeep GRAND CHEROKEE

MOPAR® GENUINE ACCESSORIES*



MOLDED SPLASH GUARDS. Designed to help protect your Grand Cherokee's body panels by deflecting gravel, salt and other road debris. Guards feature the Jeep® Brand logo.



MOLDED RUNNING BOARDS. These premium running boards are constructed of heavy-gauge steel, aiding in safe, easy entry and exit from your vehicle. Boards feature a Black outer cover with chrome accents.



ILLUMINATED DOOR SILL GUARDS. Add a touch of stainless steel style to your vehicle while protecting its interior door sills from scratches. The Jeep® Brand logo illuminates when the door is opened. Designed to enhance Limited, Overland® and Summit® models.



BRIGHT PEDAL KIT. Stainless steel pedal covers add bold brightwork to your footwell. Rubber inserts on pedals provide positive traction. No drilling required.



CARGO BARRIER. Minimize distractions when you travel and keep your four-footed family member safely restricted to the rear cargo area of your Grand Cherokee. This adjustable, low-glare, black steel barrier is custom-fitted and ready to install.



REVERSIBLE CARGO MAT. This non-slip, custom-fit cargo mat features a rubberized side to prevent cargo from sliding and a soft fabric side to protect your vehicle's interior carpet. The mat is easy to remove for cleaning.



HITCH RECEIVER. Receiver features a two-inch opening and, when properly equipped with weight-distributing equipment, allows it to tow up to 2812kg (4x4 3.6L engine), 3500kg (4x4 3.0L engine) & 2949kg (6.4L engine)⁽¹⁰⁾. Please refer to Owner's Manual for safe use.



CHROME EXHAUST. Enhance the appearance of your vehicle's existing exhaust system with this easily installed accessory. The chrome tip adds a polished finish and touch of class.



CHROME FRONT AIR DEFLECTOR. Deflect road debris, dirt and insects away from your vehicle's hood and windshield with this easily installed accessory. The wraparound style creates an air stream to help direct debris up and away from the hood.



HITCH-MOUNT BIKE CARRIER. Hitch-mount carrier comes in two-bike and four-bike styles (both fit two-inch receivers). Each style folds down to allow your vehicle's liftgate to open without having to remove bikes. Carrier features carrying clamps and security cable.



REMOVABLE ROOF RACK KIT. For vehicles not equipped with a roof rack system, this complete Removable Roof Rack Kit allows you to transport your gear safely and easily, and is compatible with all Mopar® Sport and Cargo Carriers.



ROOF MOUNT KAYAK CARRIER. Integrated rubber pads and felt-lined saddles keep your kayak secure. Carrier includes transportation straps and mounts to the Sport Utility Bars or Removable Roof Rack Kit.

Jeep GRAND CHEROKEE

TECHNICAL INFORMATION*

	3.6L V6 4x2 Petrol	3.6L V6 4x4 Petrol	3.0L V6 Diesel	6.4L V8 Petrol	6.2L V8 Petrol
Body & Chassis					
Layout	Front Engine RWD	Front Engine 4x4			
Construction	Steel Unibody				
Assembly Plant	Jefferson North Assembly Plant - Detroit, Michigan USA				
Doors	5				
Seats	5				
Powertrain					
Description	3.6 Pentastar V6 Engine with Stop/Start (ESS)	3.0 EcoDiesel V6 Engine	6.4 HEMI® V8 Engine with Fuel Saver Technology	6.2L HEMI® V8 Engine	
Capacity	3,604	2,987	6,417	6,168	
Cylinders	6		8		
Configuration	V				
Aspiration (Natural / Forced)	Naturally Aspirated	Turbocharged	Naturally Aspirated	Supercharged	
Max. Power (kW @ rpm)	213 @ 6,400	184 @ 4,000	344 @ 6,250	522 @ 6,000	
Max. Torque (Nm @ rpm)	347 @ 4,000	570 @ 2,000	624 @ 4,100	868 @ 4,800	
Valves	24		16		
Compression	10.2:1	16.5:1	10.9:1	9.5:1	
Bore & Stroke (mm)	96.0 x 83.0		83.0 x 92.0	103.9 x 94.5	
Engine Stop/Start	Standard		-		
Fuel					
System	Sequential, Multi Port, Electronic Fuel Injection	Common Rail Diesel	Sequential, Multi Port, Electronic Fuel Injection, Fuel Saver Mode	Sequential, Multi Port, Electronic Fuel Injection	
Type	Unleaded Petrol	Diesel	Unleaded Petrol (98)		
Tank Capacity (L)	93				
Economy (Urban, L/100km) ⁽¹⁾	13.4	13.5	9.3	20.7	25.5
Economy (Highway, L/100km) ⁽¹⁾	7.7	8.0	6.5	10.1	11.7
Economy (Combined, L/100km) ⁽¹⁾	9.9	10.0	7.5	14.0	16.8
Emissions					
Emission Standard Met ⁽¹⁾	6		5	6	
Emissions (Combined, CO ₂ g/km) ⁽¹⁾	229	233	198	327	385
Performance					
Acceleration (seconds 0-100km/h)	8.1	8.3	8.2	4.9	3.7
Maximum Speed (km/h)	190		202	258	289

	3.6L V6 4x2 Petrol	3.6L V6 4x4 Petrol	3.0L V6 Diesel	6.4L V8 Petrol	6.2L V8 Petrol
Weights					
Max. Braked Towing Capacity (kg) ⁽¹⁰⁾⁽¹¹⁾	1,600	2,812	3,500	2,949	
Max. Unbraked Towing Capacity (kg) ⁽¹⁰⁾	750	750	750	750	
Max. Tongue Download (kg) ⁽⁶⁾	160	281	350	294	
Gross Vehicle Mass (kg)	2,949	2,949	2,949	2,949	2,993
Gross Combined Mass (kg) Incl. Braked Towing ⁽¹⁰⁾	4,389	5,480	6,099	5,603	5,647
Roof Rack Load Limit (kg)	68			-	
Transmission					
Type	8-Speed Automatic Transmission with Steering Wheel Mounted Paddle Shifters				
Ratio - 1st	4.71				
Ratio - 2nd	3.14				
Ratio - 3rd	2.11				
Ratio - 4th	1.67				
Ratio - 5th	1.29				
Ratio - 6th	1.00				
Ratio - 7th	0.84				
Ratio - 8th	0.67				
Reverse	3.30				
Brakes					
Front - Type	Ventilated Disk, Two-Piston Floating Caliper with ABS		Ventilated Disk, Fixed Six- Piston Caliper with ABS	Adds Over 6.4L Performance Rotor Directionally Slotted	
Front - Size (mm)	350 x 32		380 x 34	400 x 36	
Rear - Type	Ventilated Disc, Floating Single Piston Caliper with ABS		Ventilated Disk, Fixed Four- Piston Caliper with ABS	Adds Over 6.4L Performance Rotor Directionally Slotted	
Rear - Size (mm)	330 x 22		350 x 28		
Warranty & Service					
Warranty	5 Year / 100,000km ⁽⁸⁾				
Roadside Assistance	Lifetime when you service through Jeep ⁽⁹⁾				
Service Intervals	12,000km / 12 Months	20,000km / 12 Months	12,000km / 12 Months	-	

Jeep GRAND CHEROKEE

TECHNICAL INFORMATION*

Weights & Capacities	Laredo 4x2	Laredo 4x4	Limited	Trailhawk	Overland	SRT	SRT Trackhawk
Dimensions							
Length (mm)	4,828			4,846			
Width (mm)	1,943			1,954			
Height (mm)	1,802		1,792		1,749		
Wheelbase (mm)	2,915						
Front Track (mm)	1,628			1,640			
Rear Track (mm)	1,634			1,646			
Tare Vehicle Weight (kg)	1,998	2,084 (3.6L) / 2,267 (3.0D)	2,169 (3.6L) / 2,281 (3.0D)	2,340	2,327	2,289	2,399
Wheel & Tyre							
Wheel Type	Alloy Wheels					Forged Alloy Wheels	
Wheel Size (Inches)	18 x 8.0		20 x 8.0	18 x 8.0	20 x 8.0	20 x 10.0	
Tyre Size	265 / 60		265 / 50	265 / 60	265 / 50	295 / 45	
Spare Wheel	245 / 65 / R18 Steel					195 / 70 / R20 Steel Space Saver	
Steering							
Type	Electric, Rack-and-Pinion Power Steering (EPS)					SRT tuned EPS	
Turning Circle - Kerb to Kerb (m)	12.2					11.6	
Column Adjustment	Tilt & Telescopic						
Suspension							
Type	Coil			Air		Adaptive Damping Coil	
Front	Independent Double Wishbone, Coil-Over Shock Absorbers, Stabiliser Bar					Adds Bilstein Adaptive Damping Suspension, Hollow Stabiliser Bar, Aluminium Lower Control Arm, Knuckle, Clevis	
Rear	Multilink, Coil Sprung, Gas Damper, Aluminium Lower Control Arm, Independent Tension, Camber, Tow Links					Adds Bilstein Adaptive Damping Suspension, Hollow Stabiliser Bar	
4x4 Specifics							
4x4 System	-	Jeep Quadra-Trac II		Jeep Quadra-Drive II		Quadra-Trac Active On Demand	
Operating Mode	-	Full Time					
Transfer Case	-	2-Speed				1-Speed	
Electronic Limited Slip Differential (E-LSD)	-			Rear			
Running Clearance (mm)	218 ⁽⁵⁾		205		218		
Running Clearance (mm) - Air Suspension Pos#2	-		260		-		
Approach Angle (Degrees)	26		36 ⁽³⁾		18		
Breakover Angle (Degrees)	19		22 ⁽³⁾		18		
Departure Angle (Degrees)	24		27 ⁽³⁾		22		
Wading Depth (mm) ⁽⁷⁾	-	508 ⁽⁷⁾				-	



jeep.com.au

(*) Overseas models may be shown in imagery, Australian model and actual colours may vary. All product illustrations and specifications are based upon current information. FCA Australia Pty Ltd ABN 23 125 956 505 trading as FCA Australia reserves the right to make changes from time to time, without notice or obligation, in prices, specifications, technical information, accessories, colours, materials and to change or discontinue models. All vehicles, models, features, colours and/or accessories shown may not be available in Australia from time to time or at all. "Optional" may mean available as an option but only at an additional cost. For the details of the vehicles, models, features, colours and/or accessories currently available in Australia, please contact an authorised Jeep Dealer. (^) Terms & conditions apply. Please contact an authorised Jeep Dealer for full terms & conditions.

(1) Fuel consumption figures are according to Australian Design Rule (ADR) 81/02. Driving style, road and traffic conditions, fitment of accessories, environmental influences and vehicle condition can lead to consumption figures which may differ from those calculated with these standards. (2) Applies to V6 variants only. (3) Air suspension Position in Off-Road #2 & Air Dam Off. (4) Air suspension Position in Off-Road #2 & Air Dam in place. (5) Vehicles fitted with Air Suspension reduce ride height by 13mm. (6) Trailer tongue download subject to certain operating conditions. Please refer to Owner's Manual for full details. (7) This vehicle is capable of crossing through water at depths of 508mm at speeds no greater than 8km/h (5mph). Water ingestion can occur causing damage to your vehicle that may not be covered by the New Vehicle Warranty. (8) 5 years from the date of vehicle registration or 100,000km (whichever comes first). (9) After your warranty period expires, scheduled maintenance services must be conducted through a Jeep Authorised Dealership at manufacturer specified intervals to maintain Lifetime Roadside Assist. Free Roadside assist is not redeemable for cash. (10) Maximum braked towing capacity when equipped with a Weight Distribution Hitch (WDH) if you intend to tow a trailer with a mass of 2,268 kilograms or above and rear axle mass meets or exceeds 80% of the Gross Axle Weight Rating (GAWR). Consult your Jeep Dealer for further towing information. (11) Maximum towing capacity is based on Aggregate Trailer Mass (ATM)