

Ford Motor Company of Canada, Limited

1997~1998

# CAR & LIGHT TRUCK GUIDE



*Ford Motor Company of Canada, Limited*



# We Race. You Win with Ford Credit.

Ford Credit works closely with your Ford of Canada dealer to make financing your next vehicle faster, easier and simpler. As specialists in automotive financing, we can offer you more flexibility than conventional lending institutions, as well as extremely competitive rates.

If you appreciate convenience, affordability and real financing and leasing flexibility, choose Ford Credit. It's your best route to your next car.

For more information on Ford Credit financing and leasing options, see the booklet, "Your Best Route To An Affordable New Car!" attached to this catalogue.



<http://www.fordcredit.ca>

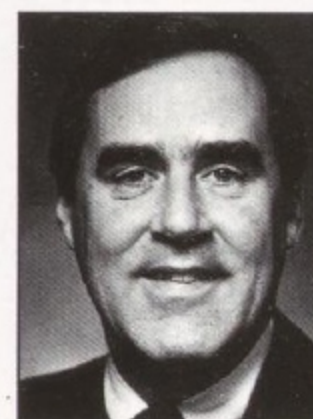


Ford Motor Company of Canada, Limited  
Ford du Canada Limitée

Mark W. Hutchins  
President and Chief Executive Officer

The Canadian Road  
P.O. Box 2000  
Oakville, Ontario  
L6J 5E4

January 1, 1997



Dear Canadian Driver,

At Ford of Canada, our commitment is to you, the Canadian consumer. All our advances in automotive design, technology, safety and quality serve a single purpose - to provide you with the best driving and ownership experience in the world.

To give you real choice, we've designed the wide array of remarkable vehicles you see in this book. We went further and added to those choices... with the features and options that ensure your vehicle provides outstanding value and perfectly suits your lifestyle.

As you go through this book you'll see ample evidence of the choice and innovation that Canadians can expect from Ford of Canada. It's part of a tradition of excellence Canadians have enjoyed for the past ninety-three years. You can also find out about many of the warranty and service programs we offer. To find out more about Ford and Mercury products and programs, we invite you to visit your local Ford of Canada Dealer. You'll find them as dedicated to your complete satisfaction as we are.

Our commitment to our customers is matched only by our commitment to this country. In the last five years alone, Ford of Canada has invested over 4 billion dollars in Canada. It's an investment that will ensure our products and services continue to satisfy you. And make the future we share even better.

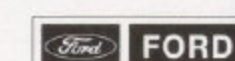
Sincerely,

*M. W. Hutchins*

## CONTENTS

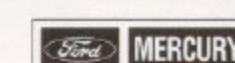
PAGE

The Ford of Canada Commitment .....	4
Driving Power .....	5
1998 Contour .....	6-7
1997 Crown Victoria .....	8
1997 Taurus .....	9
1997 Thunderbird .....	10
1997 Probe .....	11
1997 Mustang .....	12
1997 Aspire .....	13
1998 Escort ZX2 .....	14-15
1997 Escort .....	16-17
1998 Mystique .....	18-19
1997 Sable .....	20
1997 Cougar .....	21
1997 Grand Marquis .....	22
1997 Mark VIII .....	23
1997 Town Car .....	24
1997 Continental .....	25
1998 Windstar .....	26-27
1997 Aerostar .....	28
1997 Villager .....	29
1997 Expedition .....	30-31
1997 Explorer .....	32
1997 Ranger .....	33
1997 F-Series F-150/F-250 .....	34-35
1997 F-250 Heavy Duty/F-350/F-Super Duty .....	36
1997 Econoline .....	37
1997 Club Wagon .....	38
Additional Programs & Services .....	39



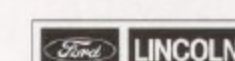
The following vehicles are available at your local Ford Dealer:

Aspire, Escort, Mustang, Probe, Contour, Taurus, Thunderbird, Crown Victoria, Windstar, Aerostar, Villager, Expedition, Explorer, Ranger, F-Series Pickups, Econoline, Club Wagon



The following vehicles are available at your local Mercury Dealer:

Aspire, Escort, Mystique, Sable, Cougar, Grand Marquis, Windstar, Aerostar, Villager, Expedition, Explorer, Ranger, F-Series Pickups, Econoline, Club Wagon



The following vehicles are available at your local Lincoln Dealer:

Mark VIII, Town Car, Continental

(Throughout this brochure, some equipment shown may be optional.)



## The Ford of Canada Commitment

From the very beginning Henry Ford was committed to building the most popular cars in the world. Today that commitment continues in Ford of Canada's quality vehicles, warranties and programs, which combine to offer our customers an outstanding driving and ownership experience.

### Committed to You, the Customer

#### 36-Month Warranty

The 36-month/60,000 km limited warranty covers the complete vehicle (except tires, and other items listed in the Warranty Guide) against defects in factory-supplied materials or workmanship. Ford of Canada's corrosion warranty covers against corrosion perforation on body sheet metal panels for 5 years/unlimited distance. Each vehicle is protected with the corrosion protection DuraGuard system. This system is built in at the factory to provide superior corrosion protection.

For complete warranty coverage information, see your Ford of Canada Dealer.

#### 24-Hour Roadside Assistance

You can count on Ford Quality now and down the road. That's because every new Ford of Canada car and light truck includes the assurance of an emergency no-cost Roadside Assistance Program during the 3-year/60,000 km warranty period.

Help is just a toll-free phone call away - 24 hours a day, anywhere in Canada or the continental United States - should you ever need trip planning, tow assistance, fuel delivery, a tire change, a jump start, emergency travel reimbursement or even help when you're locked out of your vehicle.

Ask your Ford of Canada Dealer for complete details regarding this outstanding Program.

#### Ford Quality Care

You can rely on Motorcraft Quality Replacement Parts to help ensure the long-term quality of your Ford of Canada vehicle. These parts meet the same high standards as those installed during production.

### Committed to the Environment

Ford of Canada is dedicated to sound environmental practices and is an industry leader in supporting a cleaner environment.

Only CFC-free air conditioning systems are used in all 1997 and 1998 Ford of Canada vehicles. In addition, Ford is dedicated to leading the way in research and advancements in the field of alternative fuels such as Methanol, Natural Gas, Propane and battery-powered vehicles.

This catalogue is printed on recycled paper containing 10% de-inked post-consumer materials and uses vegetable inks.

### Committed To Safety

While avoiding accidents all together is best, it's not always possible. That's why Ford Motor Company is dedicated to making our vehicles so safe. The wide range of safety features available on our vehicles includes:

- Dual Air Bags
- Side Door Intrusion Beams
- Front and Rear Crumple Zones
- "Safety Cell" Structure
- Anti-lock Braking System (ABS)
- Remote Keyless Entry System
- Child-Proof Rear Door Locks
- Integrated Child Safety Seats
- Daytime Running Lights
- Interval Wipers
- Adjustable shoulder belt "D" Rings
- Knee Bolsters
- Energy-absorbing Steering Column

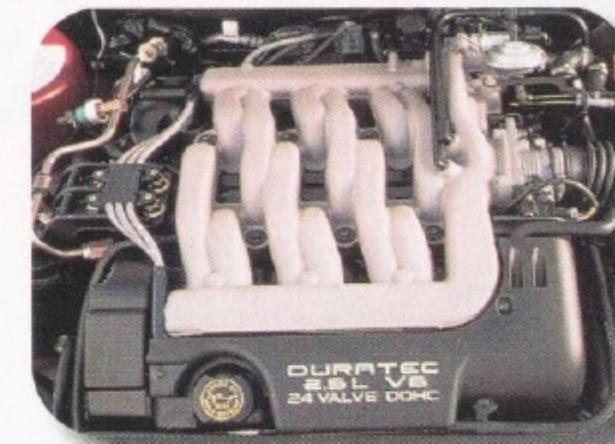
## Driving Power

Ford Motor Company's cars, trucks, minivans and commercial vehicles are designed and engineered to give you all the power you need. And then some. We have a wide selection of standard and available engines - some of which are shown below - to offer you considerable choice. Our engines include such high performers as a new 4.2L standard engine for the F-150; a trio of powerful, all-new Triton modular engines; Escort's upgraded 2.0L engine, the responsive Lincoln Mark VIII 4.6L InTech V8 engine and a new 5.0L powerplant for Explorer. You'll find that the Ford Motor Company not only offers you the vehicle you want... it offers you the power to get the most out of it.



#### The 2.0 L Split-Port Induction I-4

With 110 hp, Escort's 2.0L engine is fully 25% more potent than its predecessor. The new split-port induction system boosts power at engines speeds over 3,000 rpm by increasing the fuel/air mixture to the cylinders. Below 3,000 rpm, the fuel/air mixture is efficiently administered at normal levels for traditional 4-cylinder fuel economy.



#### The 2.5 L Duratec V6

The 24-valve 2.5L Duratec V6 system produces 170 horsepower and offers a superb blend of power and efficiency. It has an all-aluminum engine block, heads and piston design that are direct descendants of Ford's advanced racing technology. It is available on Contour and Mystique.



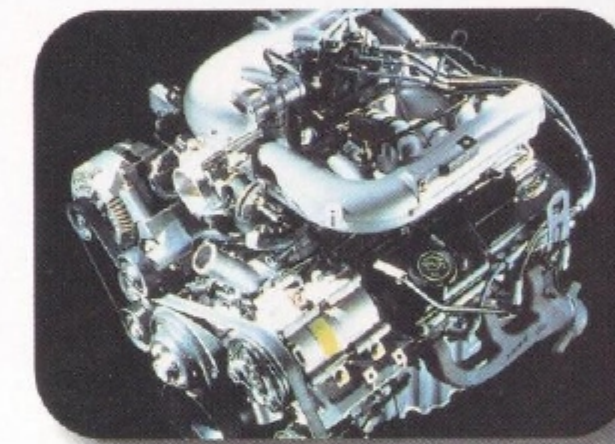
#### The 3.4 L SHO V8

The 3.4L Super High Output V8 provides 235 horsepower and features 4 valves per cylinder for free breathing and maximum power. This engine is the heart of the Taurus SHO model and provides sophisticated and responsive performance.



#### The 4.0 L SOHC V6

For 1997, Explorer offers two optional engines: a single overhead cam 4.0L V6 engine that produces 205 horsepower, adding over 40 horsepower to Explorer's 4.0L V6 base engine; and a powerful 5.0L V8 featuring All Wheel Drive. Customers choosing the optional 4.0L can order a new 5-speed automatic transmission for even smoother shifting and powertrain operation. The overall result is more power, performance and driveability.



#### The 4.2 L V6

With 205 hp at 4,400 rpm, the F-150's new 4.2L engine is the most powerful standard V6 engine in its class. Its split-port induction system, with two valves (intake/exhaust) and two intake ports per cylinder, helps the 4.2L V6 achieve a level of performance associated with 4-valve-per-cylinder engine designs.



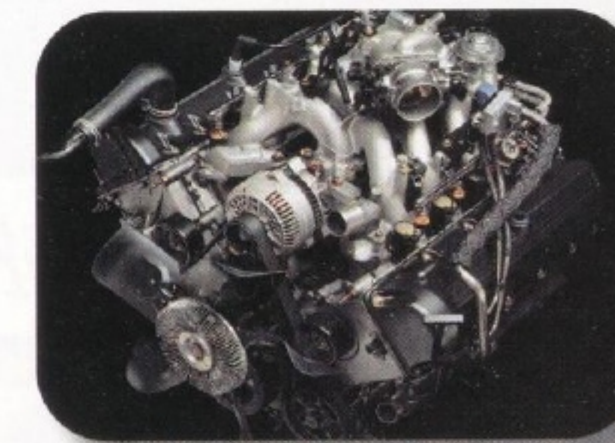
#### The 4.6 L DOHC InTech V8

A 32-valve, Four-Cam 280 horsepower InTech V8 is standard in the Lincoln Mark VIII. With its new centre entry intake manifold, it's destined to set the standard for quiet, responsive performance.



#### The 4.6 L SEFI Triton V8

A 1997 F-150 powered by the 4.6L Triton V8 has the highest available V8 payload in its class. This powerful new V8 delivers increased horsepower per litre of displacement over the previous-generation V8 it replaces. It's the only V8 available in a full-size truck featuring an advanced and durable chain-driven single overhead cam (SOHC) design. It has a fail-safe cooling system too. This engine is standard on the new Expedition sport utility vehicle and is available in Econoline and Club Wagon.



#### The 5.4 L SEFI Triton V8

The optional 5.4L SEFI Triton V8 is the F-150's most powerful engine. It's also available on Expedition, Econoline and Club Wagon. Whether towing a trailer or hauling cargo, this engine delivers plenty of low-end torque to get heavy loads underway powerfully and smoothly.



#### The 6.8 L Triton V10

An all-new 6.8L V10 Triton engine is available for the Econoline and Club Wagon. This engine is designed for heavy-duty applications.

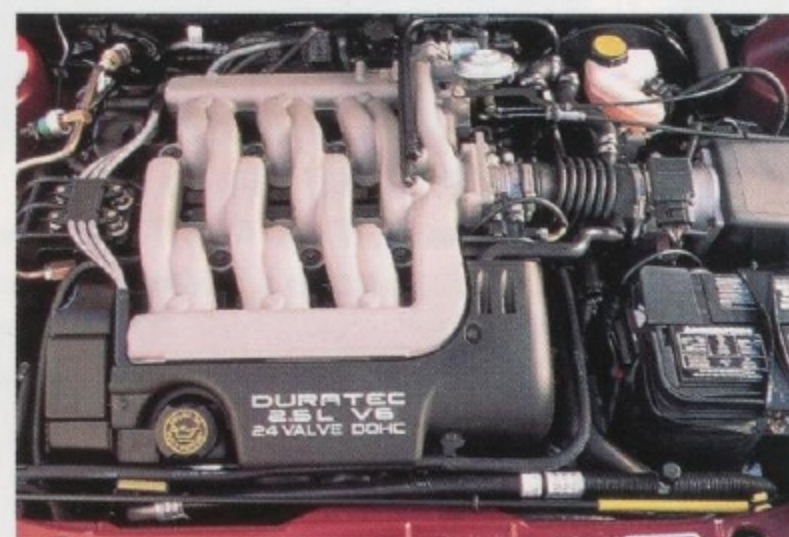
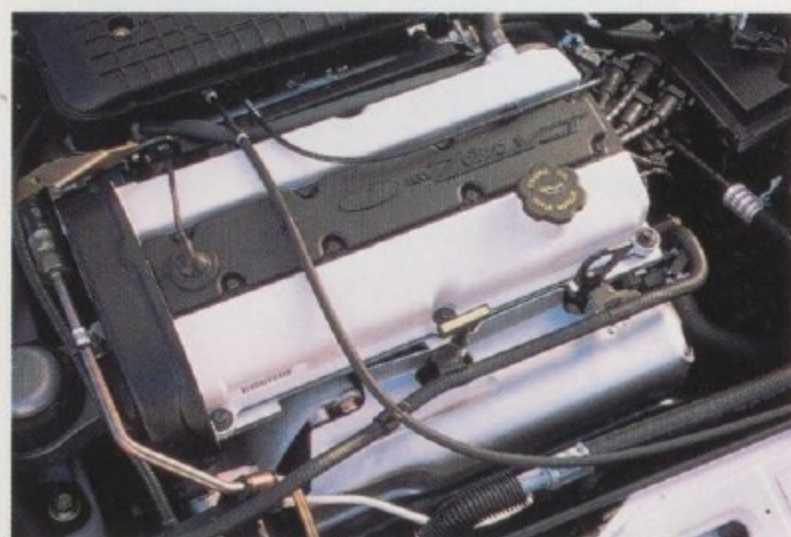
\*The trademark Power Stroke is used under license from C.M.R. Canada Ltd.





## '98 Contour

Value and a driving experience that will surprise you



### Dimensions

	mm (in.)
Wheelbase	2705 (106.5)
Length	4710 (183.9)
Height	1384 (54.5)
Width	1755 (69.1)
Seating Capacity	5

### Major Standard Features

- Enhanced 2.0 litre DOHC Zetec I-4 engine
- Dual airbags
- Illuminated switches and controls
- Independent MacPherson front suspension
- Tilt steering
- Centre console with two moulded cupholders and CD/cassette storage
- Childproof rear door locks

### Major Optional Features

- 2.5 litre DOHC Duratec V6 engine
- Anti-lock braking system
- Remote keyless entry system
- Sport Package includes leather-wrapped steering wheel and gear shift knob, fog lamps, 15" 8 spoke sport aluminum wheels and tires, tachometer, sport floor mats and sport badging
- Electronic AM/FM stereo with CD player and premium sound



### Preferred Equipment Packages

We've grouped several of Contour's most appealing options into Preferred Equipment Packages which yield price reductions over ordering these options individually. Additional packages are available. See your Dealer for details.

Model Package #	GL 330A	GL 331A	LX 335A	SE 340A
Electronic AM/FM stereo radio/cassette	•	•	•	•
Air conditioning	•	•	•	•
Carpeted front and rear floor mats	•	•	•	•
Power door locks	•	•	•	•
Power windows	•	•	•	•
Power mirrors	•	s	s	•
Speed control	•	•	•	•
Light group	•	•	•	•
2.5L Duratec V-6 engine with 5-speed manual transaxle	•	•	s	•
Anti-lock braking system	•	•	•	•
Power moonroof	•	•	•	•
6-way power driver's seat	•	•	•	•
15" aluminum 8-spoke wheels	•	•	•	•

s = Standard



Left Page:

Above - Contour features restyled front and rear ends  
Below left - The enhanced 2.0L DOHC Zetec I-4 engine is standard

Below right - The powerful 2.5L Duratec V6 engine utilizes advanced racing technology in the design of its cylinder block. Optional on Contour GL and LX, standard on SE

Right Page:

Above - Contour's refined instrument panel features a new, extra-efficient vent design

Middle - The colour-keyed rear wing spoiler is standard on Contour SE

Right - Contour's driver's seat now includes an integral armrest for added comfort. (shown in optional leather seating surfaces)





## '97 Crown Victoria

*Where Tradition and Classic Style Are Still Honoured*

### Preferred Equipment Packages

We've grouped several of Crown Victoria's most appealing options into Preferred Equipment Packages which yield price reductions over ordering these options individually. Additional packages are available. See your Dealer for details.

Model Package #	LX 210A	LX 211A
Power lock group	•	•
Speed control	•	•
Spare tire cover	•	•
Illuminated entry system	•	•
Electronic AM/FM stereo with cassette	•	•
Light/Decor group	•	•
Leather-wrapped steering wheel	•	•
Cast aluminum 12-spoke wheels	•	•
Cornering lamps	•	•
Electronic temperature control air conditioning	•	•
Anti-lock braking system with traction assist	•	•
High level audio system	•	•
Electronic instrumentation	•	•
Remote keyless entry system	•	•
Dual 6-way power driver and front passenger seats	•	•
Electronic auto dim mirror	•	•

### Dimensions

	mm	(in.)
Wheelbase	2905	(114.4)
Length	5384	(212.0)
Height	1443	(56.8)
Width	1976	(77.8)
Seating Capacity	6	

### Major Standard Features

- 4.6 litre V8 SEFI overhead cam engine
- 4-speed automatic overdrive transmission
- Speed sensitive variable assist power steering with tilt steering wheel
- Power 4-wheel disc brakes
- Dual air bags
- Air conditioning
- Power 6-way luxury cloth driver's seat with power lumbar support\*
- Electronic AM/FM stereo with electronic digital clock

### Major Optional Features

- Remote keyless entry system
- Electronic AM/FM stereo with cassette\*\*
- Anti-lock brakes with electronic traction assist\*\*
- Electronic temperature controlled air conditioning
- Power door locks\*\*
- Handling and Performance Package

\*Standard on LX model only  
\*\*Option included in a Preferred Equipment Package



Top - Crown Victoria LX in Medium Wedgewood Blue Clearcoat Metallic

Above - A spacious 583-litre (20.6 cu. ft.) deep well trunk

Left - For added security and convenience, Crown Victoria offers the optional remote keyless entry system

Some standard and optional features may only be available on specific models, or as part of a Preferred Equipment Package. See your Dealer for details.



## '97 Taurus

*Practical and Dramatic by Design*

**Sedan or Wagon  
Same Price  
Two Great Choices!**

### Major Standard Features

- 3.0 litre Vulcan V6 SEFI engine
- 3.0 litre 24-valve V6 DOHC Duratec engine†
- Dual air bags
- Power steering
- Power door locks with childproof rear door locks\*
- Air conditioning
- Electronic AM/FM stereo with cassette and 6 speakers\*
- 60/40 split rear seat back
- Electronic 4-speed automatic transaxle with overdrive

### Taurus SHO

The sophisticated 235 horsepower Taurus SHO model (not shown) is a perfect marriage of exhilarating V8 power and refined performance in a technologically advanced sport sedan

### Major Optional Features

- Anti-lock braking system \*\*
- Speed control\*\*
- Remote keyless entry system with perimeter anti-theft system\*\*\*
- Integrated child seat (Wagon only)
- Wagon group (includes cargo area cover, rear wiper/washer and cargo net)

†Standard and only available on LX

\*\*Power door locks are standard on LX and SHO models only

\*\*\*Option included in a Preferred Equipment Package

\*\*\*Option included in a Preferred Equipment Package available on LX and SHO only

Top - Taurus LX Wagon shown in Pacific Green Clearcoat Metallic

Below - All-new, user-friendly instrument panel

Bottom - Taurus GL Sedan in Black Satin Clearcoat



(Metric instrumentation is standard in Canada)



### Preferred Equipment Packages

We've grouped several of Taurus' most appealing options into Preferred Equipment Packages which yield price reductions over ordering these options individually. Additional packages are available. See your Dealer for details.

Model Package #	GL 161A	GL 165A	LX 180A	LX 185A
Electronic AM/FM stereo with cassette	•	•	S	S
Power door locks	•	•	S	S
Light group	•	•	S	S
Power driver seat	•	•	S	S
Aluminum wheels	•	•	S	S
Speed control	•	•	•	•
Anti-lock braking system	•	•	•	•
Power heated mirrors	•	•	•	•
Remote keyless entry system with perimeter anti-theft	•	•	•	•
Air conditioning with electronic temperature control	•	•	•	•
Ford MACH audio system	•	•	•	•
Chrome aluminum wheels	•	•	•	•

S = Standard

### Dimensions

	Sedan mm (in.)	Wagon mm (in.)
Wheelbase	2755 (108.5)	2755 (108.5)
Length	5016 (197.5)	5069 (199.6)
Height	1399 (55.1)	1463 (57.6)
Width	1854 (73.0)	1854 (73.0)
Seating Capacity	6*	6*

\*5 passengers in LX Sedan/Wagon and SHO (6 passengers optional on LX)

Some standard and optional features may only be available on specific models, or as part of a Preferred Equipment Package. See your Dealer for details.





## '97 Thunderbird

### The Legendary Personal Sport Coupe



#### Major Standard Features

- 3.8 litre V6 engine with multi port sequential EFI
- 4-speed electronic controlled transmission with overdrive
- Power 4-wheel disc brakes
- Power windows and door locks
- Dual air bags
- Air conditioning
- Electronic AM/FM stereo with cassette and 4 speakers

#### Major Optional Features

- Anti-lock braking system
- Traction Assist
- Remote keyless entry system
- 6-way power driver's seat\*
- Electronic AM/FM stereo with cassette and premium sound package
- 4.6 litre V8 engine\*
- Luxury group
- Anti Theft System

#### Preferred Equipment Packages

We've grouped several of Thunderbird's most appealing options into Preferred Equipment Packages which yield price reductions over ordering these options individually. Additional packages are available. See your Dealer for details.

Model Package #	LX 145A	LX 146A
Cast aluminum wheels with P215/70RX15 BSW tires	•	•
6-way power driver's seat	•	•
Illuminated entry system	•	•
Leather-wrapped steering wheel and shift knob	•	•
4.6 litre SEFI V-8, 4 speed automatic overdrive transmission with speed-sensitive steering	•	•
Anti-lock braking system	•	•
Decklid spoiler	•	•
Electronic AM/FM stereo/compact disc player with premium sound	•	•
Sport option	•	•

#### Dimensions

	mm	(in.)
Wheelbase	2870	(113.0)
Length	5088	(200.3)
Height	1334	(52.5)
Width	1846	(72.7)
Seating Capacity	5	

Top - Thunderbird LX in Vibrant White Clearcoat  
Left - The well-appointed Thunderbird interior shown with optional leather seating surfaces in Light Prairie Tan  
Below - Thunderbird LX in Pacific Green Clearcoat Metallic



Some standard and optional features may only be available on specific models, or as part of a Preferred Equipment Package. See your Dealer for details.



## '97 Probe

### Engineered for Style and Performance

#### Major Standard Features

- 2.0 litre 16-valve I-4 DOHC engine
- 2.5 litre 24-valve V6 DOHC engine\*
- 5-speed manual transmission
- Front and rear sport suspension
- Dual air bags
- Dual front bucket reclining seats with 50/50 fold down rear seat
- Electronic AM/FM stereo with 4 speakers and digital clock
- Fog lamps\*

#### Major Optional Features

- Air conditioning\*\*
- Anti-lock braking system
- Rear decklid spoiler
- Power windows and power door locks
- Remote keyless entry system with illuminated entry system
- Speed control with tilt steering column

\*Standard and only available on GT model

\*\*Option included in a Preferred Equipment Package

#### Preferred Equipment Packages

We've grouped several of Probe's most appealing options into Preferred Equipment Packages which yield price reductions over ordering these options individually. Additional packages are available. See your Dealer for details.

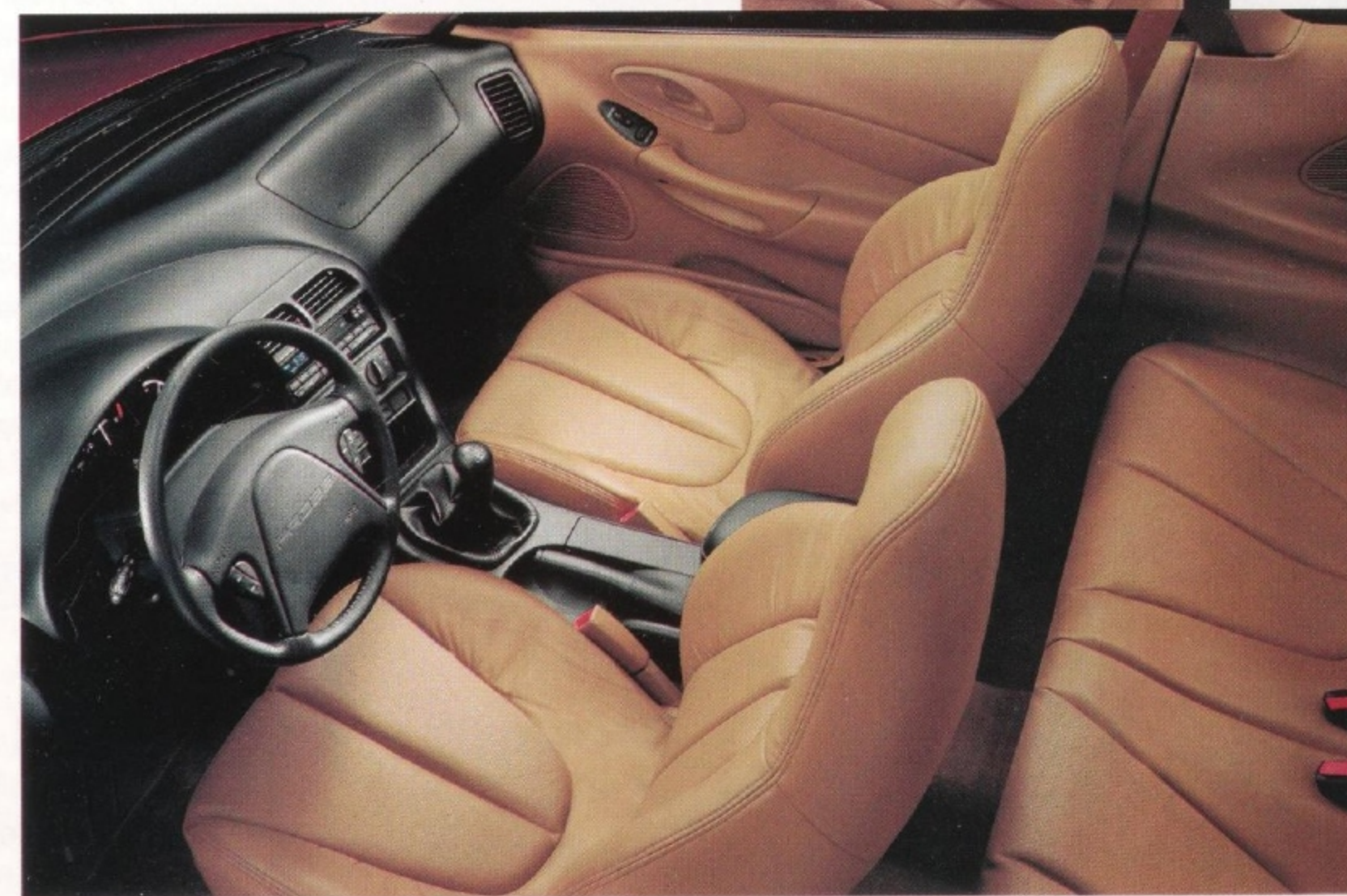
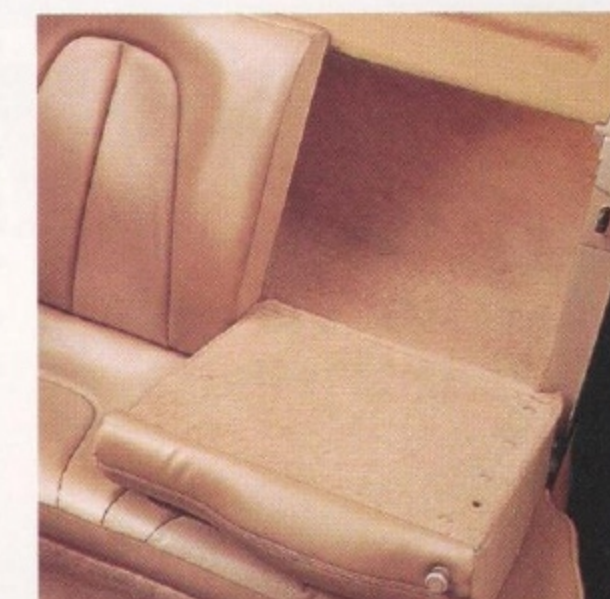
Model Package #	Probe 045A	GT 055A
Air conditioning	•	•
Electronic AM/FM stereo with cassette & clock	•	•

#### Dimensions

	mm	(in.)
Wheelbase	2611	(102.8)
Length	4539	(178.7)*
Height	1311	(51.6)
Width	1773	(69.8)
Seating Capacity	4	

\*4559 (179.5) on GT model

Top - Probe GT in Laser Red Tinted Clearcoat Metallic  
Right - 50/50 split rear seat backs can be lowered individually  
Below - Probe GT interior in saddle with optional leather seating



Some standard and optional features may only be available on specific models, or as part of a Preferred Equipment Package. See your Dealer for details.





## '97 Mustang

*There is Nothing Like a Mustang*

### Major Standard Features

- 3.8 litre V6 engine
- 4.6 litre SOHC V8 engine\*
- 5-speed manual transmission
- Dual air bags
- Passive anti-theft system
- Reclining bucket seats with split/fold rear seat
- Electronic AM/FM 24-watt stereo with 4 speakers
- Rear spoiler\*
- Dual electric remote control mirrors
- Solar-tinted glass

Top - Mustang Coupe in Rio Red Tinted Clearcoat  
Below - Mustang GT Convertible in Crystal White Clearcoat



### Major Optional Features

- Anti-lock braking system
- Air conditioning\*\*
- Remote keyless entry system with illuminated entry system
- Electronic AM/FM stereo with cassette\*\*
- 4-way power driver's seat
- Power windows and power door locks\*\*

\*Standard and only available on GT model

\*\*Option included in a Preferred Equipment Package

### Preferred Equipment Packages

We've grouped several of Mustang's most appealing options into Preferred Equipment Packages which yield price reductions over ordering these options individually. Additional packages are available. See your Dealer for details.

Model Package #	Mustang 075A	GT 080A
Air conditioning	•	•
Power side windows*	•	•
Power door locks*	•	•
Power decklid release*	•	•
Speed control	•	•
15" cast aluminum wheels	•	•
Electronic AM/FM stereo with cassette and premium sound	•	•
Dual illuminated visor mirrors*	•	•
Illuminated entry system with remote keyless entry	•	•
Power driver's seat	•	•
Anti-lock braking system	•	•
Fog lamps*	•	•
GT sport seats*	•	•
Leather-wrapped steering wheel*	•	•
Rear spoiler*	•	•

\*Standard on Convertible

### Dimensions

	mm	(in.)
Wheelbase	2573	(101.3)
Length	4610	(181.5)
Height†	1351	(53.2)
Width	1823	(71.8)
Seating Capacity	4	

†1356 mm (53.4) on GT model



## '97 Aspire

*Affordable Peace of Mind*

### Major Standard Features

- 1.3 litre SOHC engine
- 5-speed manual overdrive
- Dual air bags
- Power front disc and rear drum brakes
- Full length console with dual cupholders and storage compartment
- Front high-back reclining bucket seats
- Full fold rear bench seat

### Major Optional Features

- Anti-lock braking system
- Power steering
- Electronic AM/FM stereo with cassette and clock\*
- Automatic transmission
- Premium cloth and vinyl seats\*
- Remote rear hatch release\*

\*Option included in a Preferred Equipment Package

### Dimensions

	3-Door mm (in.)	5-Door mm (in.)
Wheelbase	2303 (90.7)	2385 (93.9)
Length	3881 (152.8)	3959 (155.9)
Height	1412 (55.6)	1412 (55.6)
Width	1668 (65.7)	1668 (65.7)
Seating Capacity	4	4

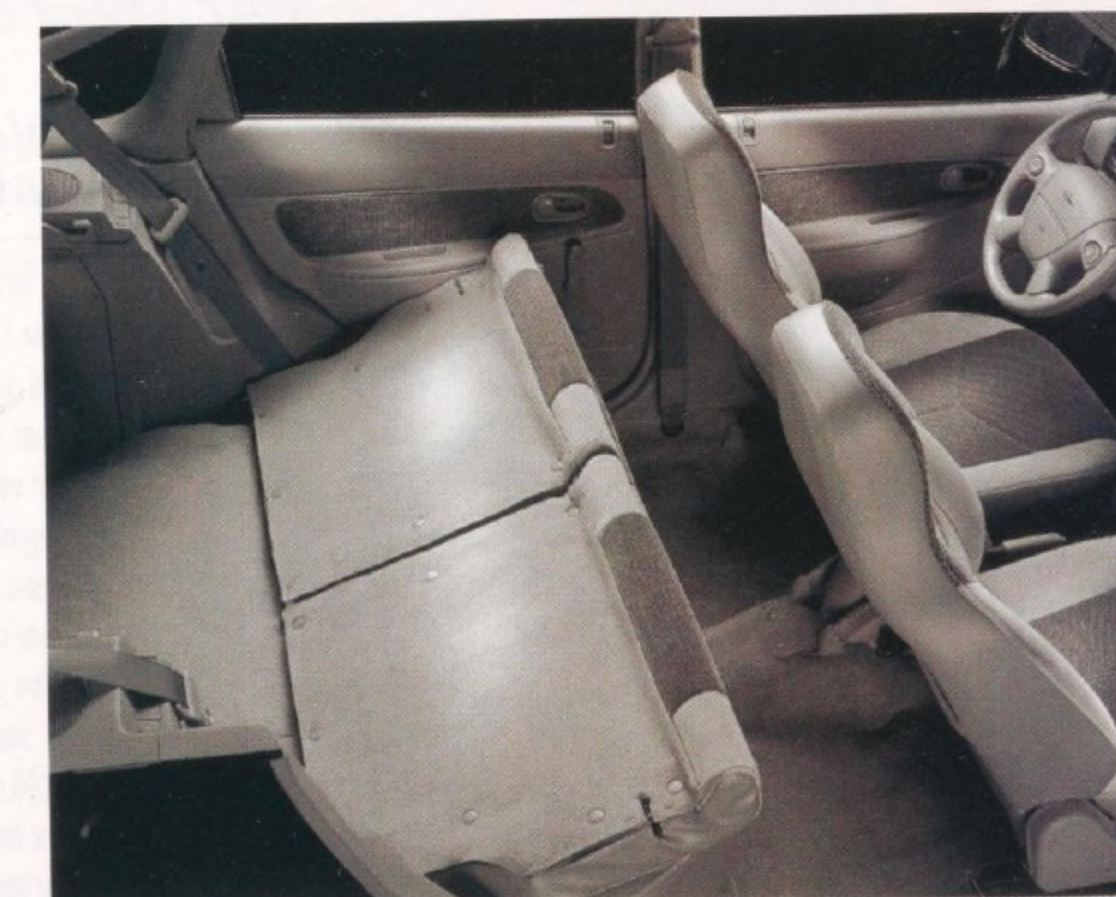
Top - Aspire in Hot Red  
Above right - Aspire 3-door in Crystal White  
Right - Split seat backs fold down individually



### Preferred Equipment Package

We've grouped several of Aspire's most appealing options into the Preferred Equipment Package shown below and we've priced it to yield price reductions over ordering these options individually. See your Dealer for details.

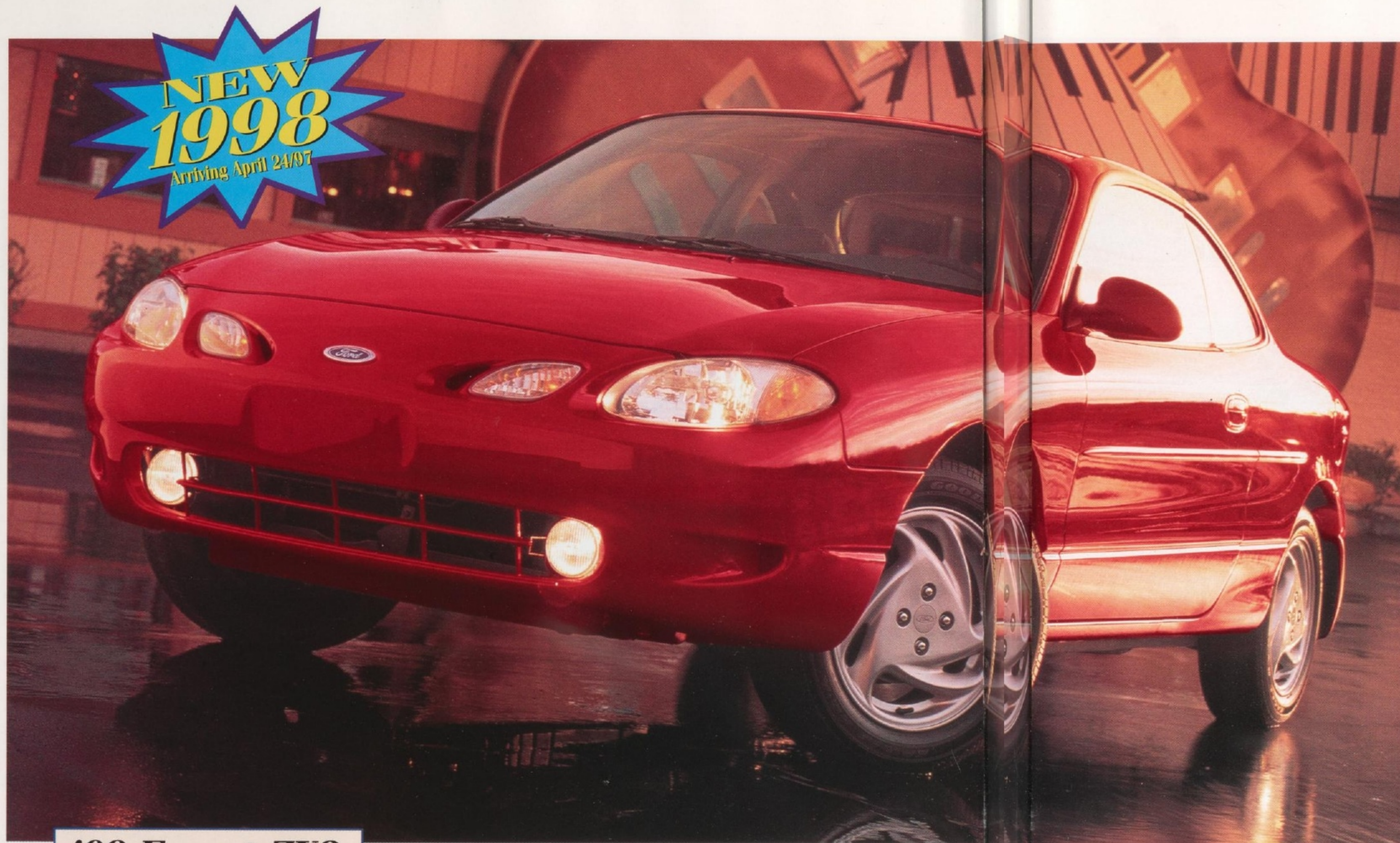
Package #	031A
Interval wipers	•
Package tray cover / cargo light	•
Premium cloth and vinyl seats	•
Split fold rear seats (50/50)	•
Front door map pockets	•
Door trim inserts	•
Remote hatch release	•
Electronic AM/FM stereo with clock & cassette	•
Visor vanity mirror with cover	•



Some standard and optional features may only be available on specific models, or as part of a Preferred Equipment Package. See your Dealer for details.

Some standard and optional features may only be available on specific models, or as part of a Preferred Equipment Package. See your Dealer for details.





## Dimensions

	mm (in.)
Wheelbase	2499 (98.4)
Length	4450 (175.2)
Height	1328 (52.3)
Width	1712 (67.4)
Seating Capacity	4



## Preferred Equipment Packages

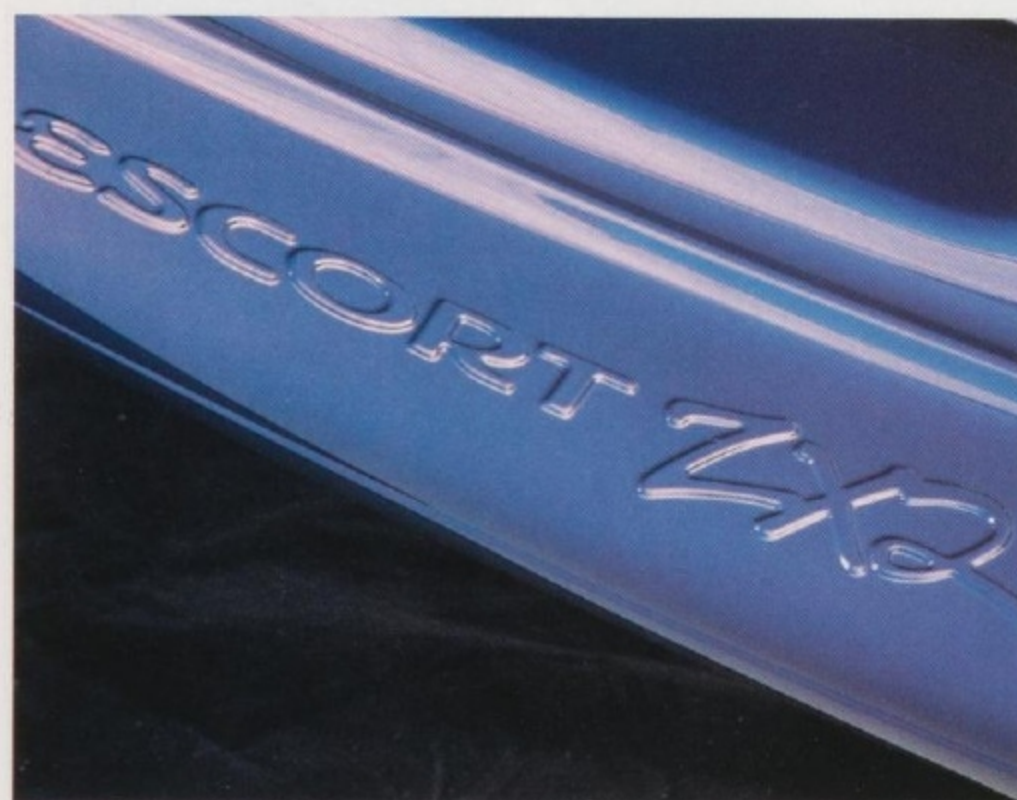
We've grouped several of Escort ZX2's most appealing options into Preferred Equipment Packages which yield price reductions over ordering these options individually. Additional packages are available. See your Dealer for details.

Package # 021A 022A

Group 1 ( includes air conditioning, driver's door remote entry system with panic alarm and two key fobs, dual power mirrors and front and rear floor mats ) • •

Group 2 ( includes power locks, power windows and all door remote entry system with perimeter anti-theft alarm, panic button and two key fobs ) •

## '98 Escort ZX2 *Spirited, Perfect and Fun to Drive*

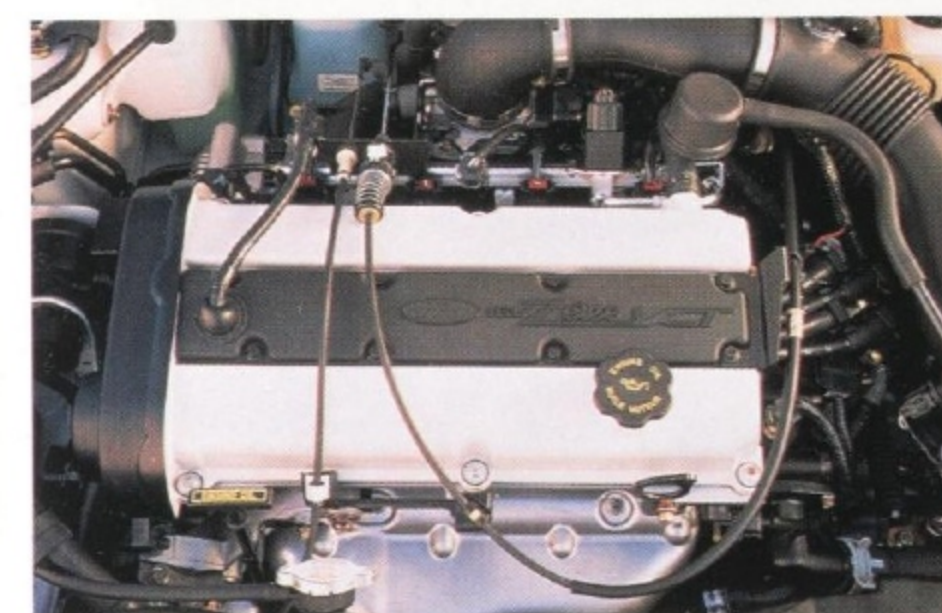


### Major Standard Features

- 2.0 litre, 130 horsepower, DOHC 16-valve Zetec I-4 engine
- Dual air bags
- Power rack-and-pinion steering
- Four wheel independent suspension
- Integrated Control Panel for audio and climate controls
- Driver's seat memory recline
- Centre console with 3 cupholders and rear storage
- 60/40 split-fold rear seat
- Solar tinted glass
- Rear seat heat ducts
- Variable interval windshield wipers

### Major Optional Features

- Anti-lock braking system
- Sport Package (spoiler, fog lamps & more)
- Power moonroof
- 6-disc CD changer with premium sound
- 14" aluminum 5-spoke wheels
- Integrated child seat
- Group 3 (includes speed control, tilt steering & Convenience Group)



Above left - Escort ZX2 with Sport Package

Far left - The ZX2's colour-keyed rear bumper

Above - The standard 2.0L DOHC 16-valve Zetec engine offers 130 horsepower while maintaining fuel efficiency

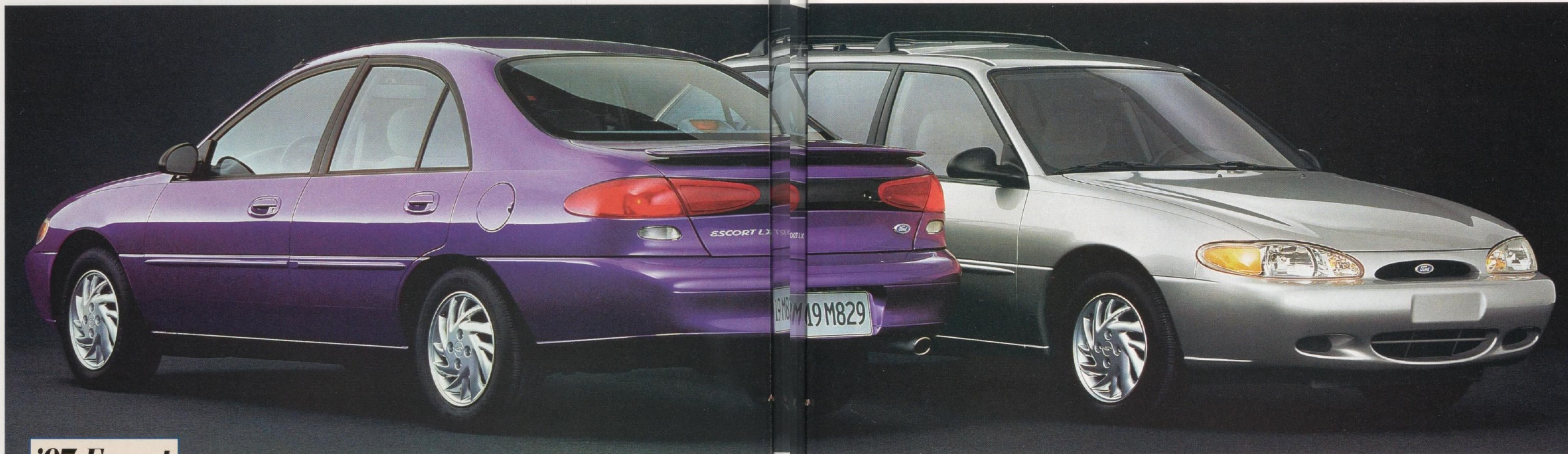
Above right - The optional Sport Package includes decklid badging, 15" aluminum sport wheels and more

Middle right - Bucket seats help you ride in style and comfort

Below right - The colour-keyed rear spoiler is part of the optional Sport Package







## '97 Escort

### Form, Function, and Fun

#### Major Standard Features

- 2.0 litre split-port induction engine with 5-speed manual transmission
- Dual air bags
- Power steering
- Power brakes
- Centre console with cupholders and rear bin cupholder
- Electronic AM/FM stereo with premium speakers
- Low back cloth and vinyl buckets with 60/40 rear split fold seat\*

\*LX only

#### Major Optional Features

- Anti-lock braking system
- Air conditioning
- 4-speed automatic transmission
- Electronic AM/FM stereo with cassette
- Power door locks with anti-theft system\*
- Speed control\*
- Wagon Group (includes luggage rack and rear window wiper/washer)

\*LX only

**LX Sedan or Wagon  
Same Price  
Two Great Choices!**



Above - Exclusive Integrated Control Panel  
Left - Escort LX Sedan in Pacific Green Clearcoat Metallic



**Escort Sedan Voted Best New Economy Car\***

**Escort Wagon Voted Best New Wagon\***



Automobile Journalists  
Association of Canada

#### Dimensions

	Sedan mm (in.)	Wagon mm (in.)
Wheelbase	2499 (98.4)	2499 (98.4)
Length	4437 (174.7)	4386 (172.7)
Height	1353 (53.3)	1369 (53.9)
Width	1701 (67.0)	1701 (67.0)
Seating Capacity	5	5



(Metric instrumentation is standard in Canada)

Top - Escort LX Sedan with Sport Appearance Package in Royal Plum Clearcoat Metallic and Escort LX Wagon in Silver Frost Clearcoat Metallic

Above right - Escort's new contemporary look with sleek exterior lines  
Above - All-new, user-friendly instrument panel

#### Preferred Equipment Packages

We've grouped several of Escort's most appealing options into Preferred Equipment Packages which yield price reductions over ordering these options individually. Additional packages and a GL model are available. See your Dealer for details.

Model Group #	LX 011A	LX 015B
Air conditioning	•	•
Dual power mirrors	•	•
Driver's door remote entry	•	•
Front and rear floor mats	•	•
Power door locks with anti-theft	•	•
Power windows	•	•

\*Some standard and optional features may only be available on specific models, or as part of a Preferred Equipment Package. See your Dealer for details.





## '98 Mystique

*Superior Driving Experience in a Distinctive Sedan*



### Major Standard Features

- Enhanced 2.0 litre DOHC Zetec I-4 engine
- Soft-touch driver-oriented instrument panel
- Power rack-and-pinion steering
- Independent MacPherson strut front suspension
- Dual air bags
- Centre console with two moulded cupholders and CD/cassette storage
- Dual remote control exterior mirrors
- Rear child-safety door locks

### Major Optional Features

- 2.5 litre DOHC Duratec V6 engine
- Power door locks and windows
- Electronic AM/FM cassette
- Speed control
- Integrated child seat (rear)
- Sport Package includes leather-wrapped steering wheel and gear shift knob, fog lamps, 15" polished mach alloy wheels and unique floor mats. Available on GS model only



### Preferred Equipment Packages

We've grouped several of Mystique's most appealing options into Preferred Equipment Packages which yield price reductions over ordering these options individually. Additional packages are available. See your Dealer for details.

Model	GS	GS	LS
Package #	320A	321A	325A
Air conditioning	•	•	•
AM/FM stereo cassette	•	•	s
Front and rear floor mats	•	•	•
Power door locks		•	•
Power windows		•	•
Light group		•	•
Speed control		•	•
2.5L Duratec V6 engine		•	s
Anti-lock braking system			•
Power moonroof			•

s = Standard



### Dimensions

	mm (in.)
Wheelbase	2705 (106.5)
Length	4704 (185.2)
Height	1384 (54.5)
Width	1755 (69.1)
Seating Capacity	5



Above far left - Mystique shown in Vibrant White Clearcoat features a dramatic new front end for 1998

Below far left - Mystique features a refined and comfortable interior

Top right - The powerful, efficient 2.5L Duratec V-6 system is standard on Mystique LS

Above - Mystique in Vibrant White Clearcoat





## '97 Sable

*A Sophisticated Driving Experience*

### Preferred Equipment Packages

We've grouped several of Sable's most appealing options into Preferred Equipment Packages which yield price reductions over ordering these options individually. Additional packages are available. See your Dealer for details.

Model Package #	GS 410A	GS 411A	LS 415A	LS 416A
Speed control	•	•	•	•
Light group	•	•	s	s
Power door locks	•	•	s	s
Power driver's seat	•	•	s	s
Aluminum wheels	•	•	s	s
Anti-lock braking system	•	•	•	•
Electronic AM/FM stereo with cassette	•	•	s	s
Power heated mirrors	•	•	•	•
Remote keyless entry system with perimeter anti-theft	•	•	•	•
Ford MACH audio system	•	•	•	•
Chrome aluminum wheels	•	•	•	•
Air conditioning with electronic temperature control	•	•	•	•

s = Standard

### Major Standard Features

- 3.0 litre Vulcan V6 SEFI engine
- 3.0 litre 24-valve V6 DOHC Duratec engine\*
- Electronic 4-speed automatic transaxle with overdrive
- Dual air bags
- Air conditioning
- Power windows
- Electronic AM/FM stereo with electronic digital clock
- Flip/fold centre console

Top - Sable GS Sedan shown in Moonlight Blue Clearcoat Metallic  
Below - Sable LS Wagon shown in Silver Frost Clearcoat Metallic  
Right - 3-way flip-fold console offers a middle seat, armrest, cupholders and cassette storage

### Major Optional Features

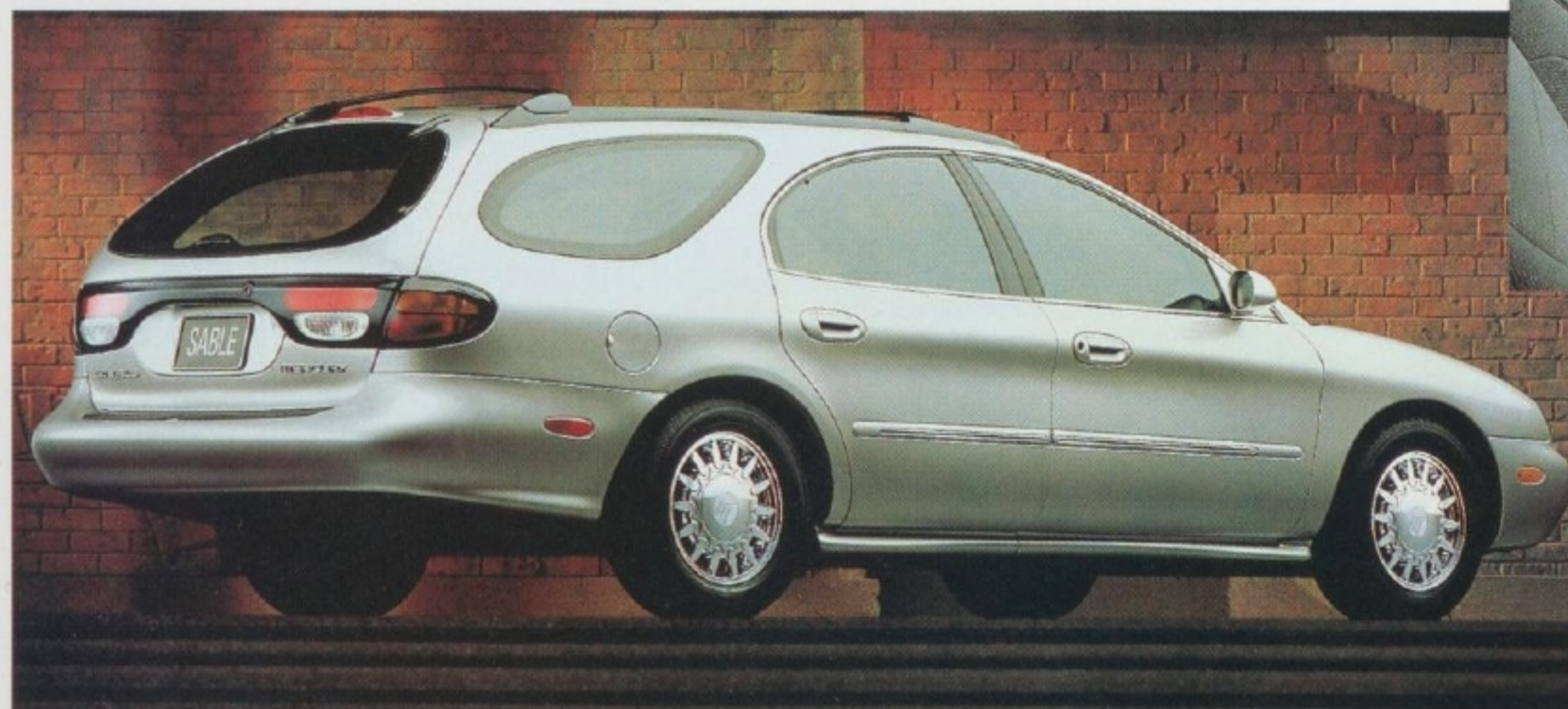
- Anti-lock braking system\*\*
  - Remote keyless entry system with perimeter anti-theft\*\*\*
  - Wagon Group (includes cargo area cover, rear wiper/washer and cargo tie-down net)
  - Rear facing third seat (Wagon only)
- \*Standard and only available on LS  
\*\*Option included in a Preferred Equipment Package  
\*\*\*Option included in a Preferred Equipment Package available on LS model only



### Dimensions

	Sedan mm (in.)	Wagon mm (in.)
Wheelbase	2755 (108.5)	2755 (108.5)
Length	5072 (199.7)	5057 (199.1)
Height	1407 (55.4)	1463 (57.6)
Width	1854 (73.0)	1854 (73.0)
Seating Capacity	6*	6*

\*5 passengers with LS Sedan/Wagon (6 passengers optional on LS)

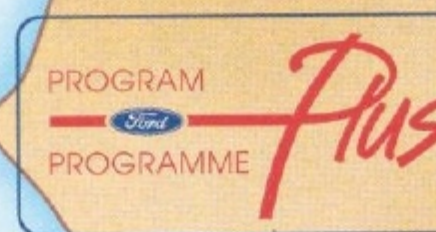


Ford Credit



F O R D C R E D I T C A N A D A

# YOUR BEST ROUTE TO AN AFFORDABLE NEW CAR!





# Ford Credit Canada



Choose Ford Credit and the financing of your next vehicle will be faster, easier and simpler. That's because Ford Credit works closely with your Ford of Canada Dealer to take care of your financing needs right on the spot.

As specialists in automotive financing, we offer more flexibility than conventional lending institutions. Your line of credit remains unchanged when you finance through us. And of course, our rates are extremely competitive.

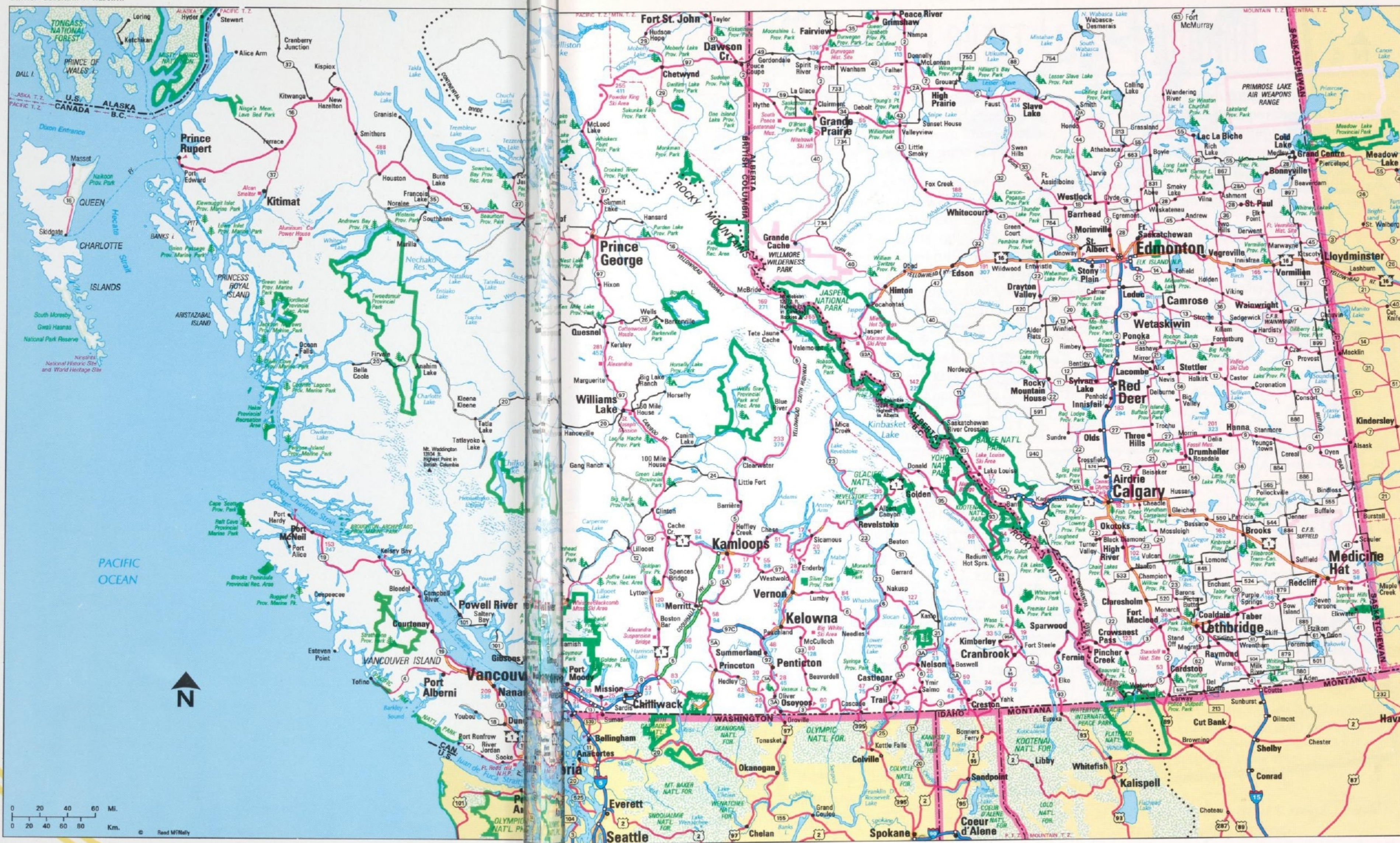
Ford Credit is one of the largest automotive financial services companies operating in Canada. There are eleven branches across the country to assist you in the purchase or lease of new and used vehicles from Canadian Ford and Lincoln-Mercury Dealers.

Our customers have rewarded us with the highest satisfaction ratings of any financial services company in the world. These ratings are the result of a consistent, customer-oriented focus throughout our thirty-five years of serving Canadians.

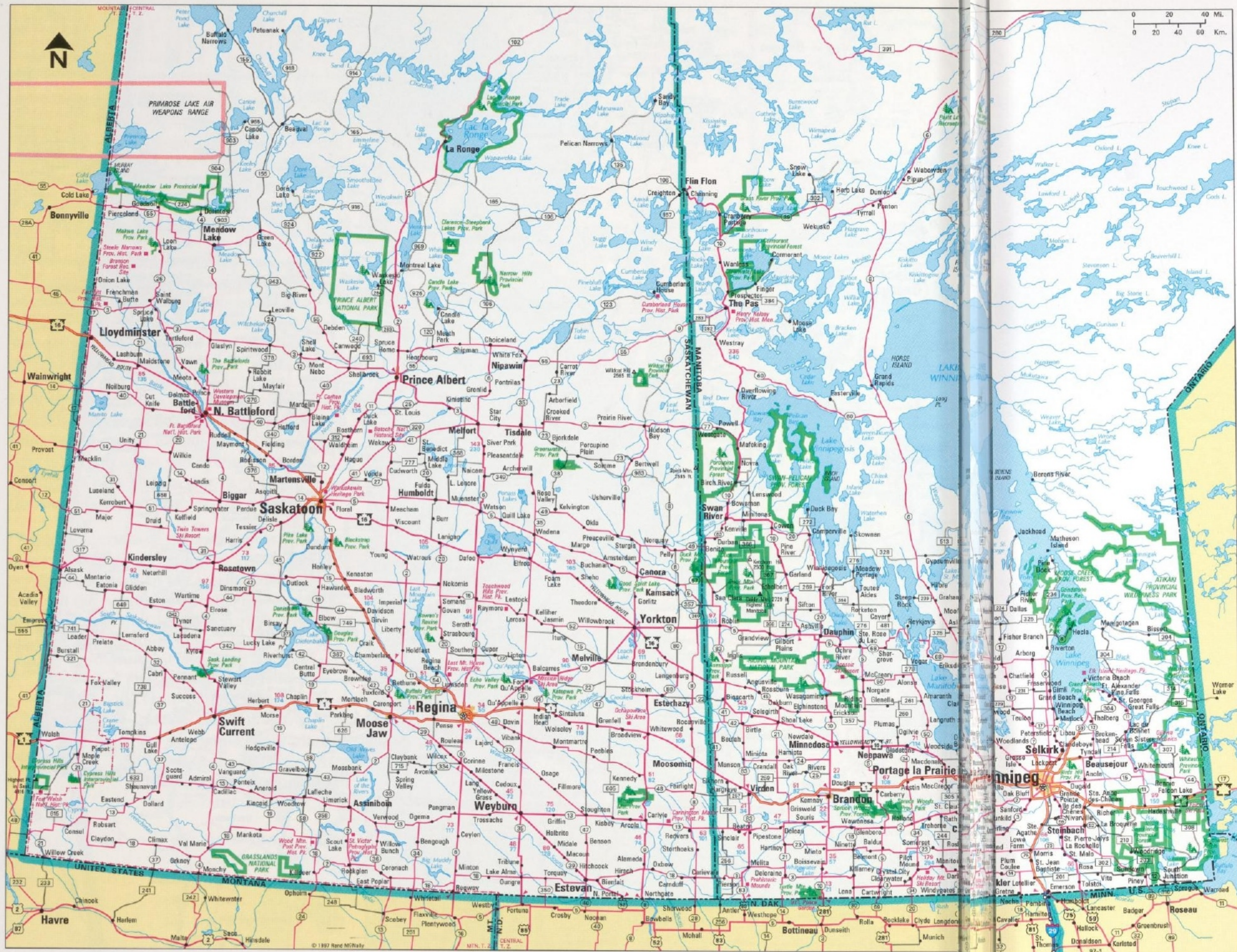
To maintain that focus, we continue to develop competitive and innovative financing purchase plans and full-disclosure, plain language lease plans that satisfy our customers.

Innovation, convenience, affordability and complete customer satisfaction - you could say we have it all mapped out.

BRITISH COLUMBIA / ALBERTA







# THE RED CARPET LEASE PROGRAM



Leasing is an idea whose time has come, and Ford Credit's Red Carpet Lease allows you to make the most of it.

That's because it offers you the best choice of new vehicle leasing options. You can count on an excellent combination of affordable payments, tailored leasing terms, a guaranteed future value and the opportunity to trade more often without any loss of trading value. Red Carpet Leases are available on the entire line of quality-built Ford, Mercury and Lincoln products.

The 24-month PLAN is a popular Red Carpet Lease alternative. It gives you the flexibility of several options at the end of

the leasing term. You can purchase the vehicle and keep it, purchase it to trade or sell for a profit, or simply walk away from any market losses. Best of all, you can drive a new vehicle more often - every two years - and experience true, low cost driving. Talk about a risk-free driving experience!

All of the benefits of The PLAN are extremely affordable because your payments are based on about half the full price of the vehicle over two years instead of the full value stretched over a four or five year term. That not only frees you from the long term debt commitments associated with traditional purchase plans, it provides you with some very pleasant benefits. They include:

## Lower Monthly Payments

Because you pay only for a portion of the vehicle's total value, Red Carpet Lease payments are lower.

## Low Initial Cost

Although you can make a down payment, the first month's lease payment and a security deposit of approximately the same amount are usually the only up-front costs of a Red Carpet Lease.

## Shorter Terms

Since you only pay on about half of the vehicle's full price, payments over a short 24 months are affordably low. You free yourself from long-term debt commitments and avoid costly maintenance and repair costs associated with owning a vehicle over a long, conventional finance term.

## Tax Advantages

For business people, a Red Carpet Lease may have important tax advantages. Ask your accountant or financial consultant to outline the specific advantages that may apply to your situation.

## More Vehicle For Your Money

For the same monthly payment as a purchase, you can usually lease a better-equipped vehicle with the options and features you really want.

## Guaranteed Future Value

Since Ford Credit guarantees the future value of your new or used leased vehicle when you return it in good condition (based on kilometre and wear & tear guidelines), you avoid the risk of depreciation.

## Drive A New Vehicle More Often

A Red Carpet Lease allows you the opportunity to enjoy the excitement of driving a new (or used) car or truck every two years.

## Gap Protection

A Red Carpet Lease includes special Gap Protection to cover the difference (gap) between what your insurance company will pay and what is owing on your lease in the event your vehicle is stolen or destroyed in an accident.

*Given all these advantages, it's no wonder more and more people are choosing a Red Carpet Lease!*



# Low Kilometre Leasing



No two drivers are alike. Some drive many, many thousands of kilometres a year, while others drive much less. That's why every Red Carpet Lease can be tailored to suit individual driving patterns. While a plan has been available to the high-kilometre driver for some time, Ford Credit now has a plan for the low-kilometre driver as well.

Currently, the average Canadian drives about 24,200 kilometres a year. Based on this average, Red Carpet Lease customers are allowed 25,000 free kilometres each year over the term of the lease.

If an RCL customer requires more, Ford Credit allows additional kilometres to be purchased at the beginning of the lease. This helps prevent unpleasant surprises at the end of the lease term. The charge for additional kilometres is reasonable and is conveniently built right

into the monthly payment. Of course, any kilometres purchased and unused at the end of the lease term would be refunded to the customer by Ford Credit.

Ford Credit Canada recognized that many drivers needed far fewer than

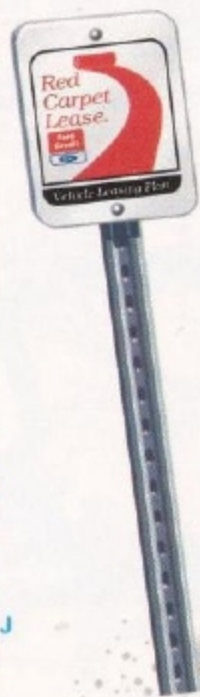
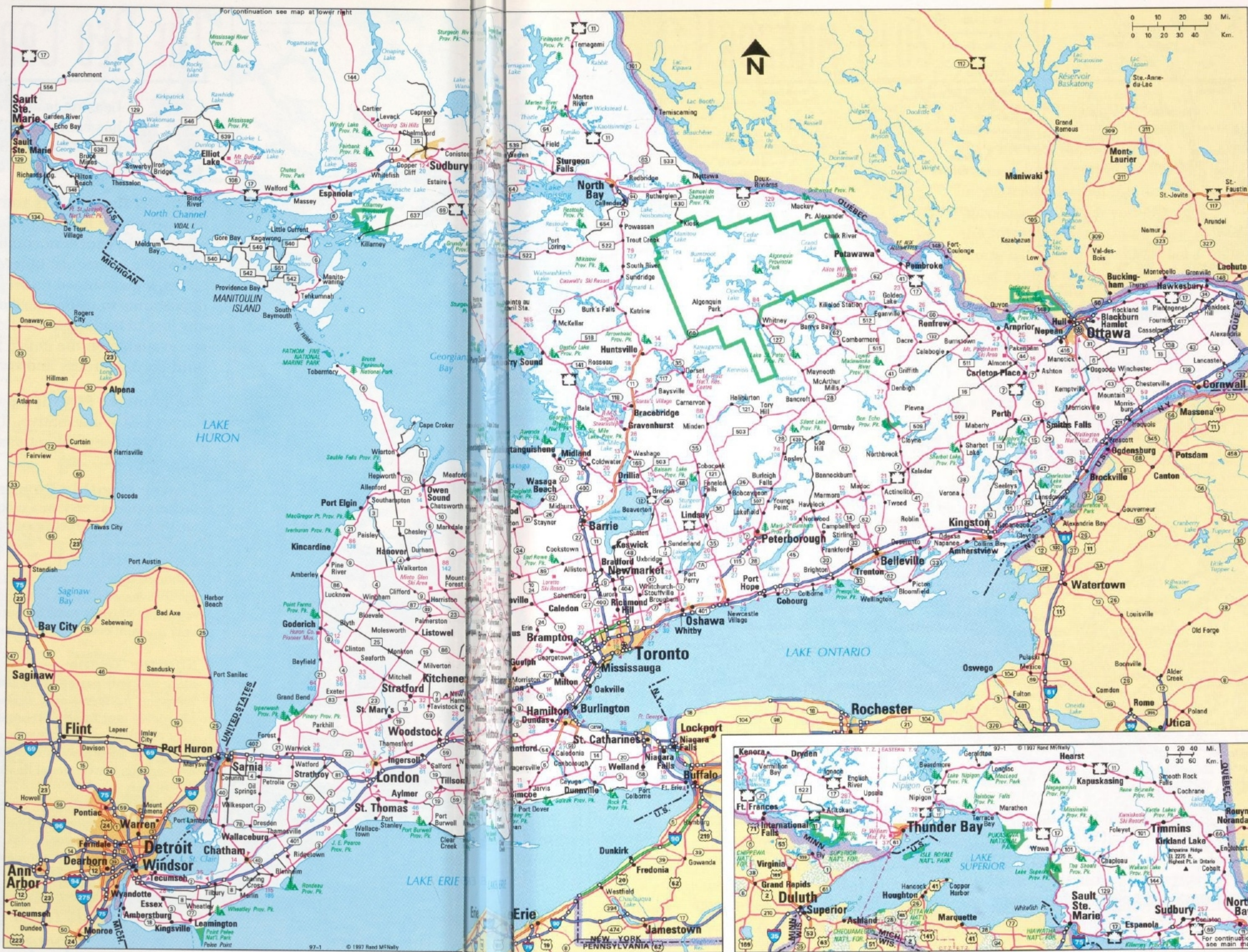
25,000 kilometres per year allotted on the standard lease plan. These low-kilometre drivers are best served by an option to choose up to 18,000 kilometres a year. This provides an even lower monthly payment on the 2-year

PLAN while still receiving all the benefits of Red Carpet Leasing outlined on the previous page.

Whether you're a high-kilometre driver or a low-kilometre driver, your Red Carpet Lease can be tailored to suit your particular driving pattern. Such flexibility is a key reason why Ford Credit leads the way in customer satisfaction.

*No two drivers are alike.  
That's why every Red Carpet Lease can be tailored to suit individual driving patterns.*

ONTARIO







# Program Plus



These days, more people than ever

are choosing to lease quality certified pre-owned vehicles.

Whenever pre-owned cars, trucks, minivans and sport utility vehicles have been well-maintained and have a relatively low number of kilometres, they are not only more affordable, but they are extremely valuable, due to their scarcity.

Thanks to the immense popularity of the Red Carpet Lease, Ford of Canada Dealers are being supplied with a steady stream of returning 2-year old vehicles from their PLAN customers. By any standard, these are valuable vehicles. They offer low kilometres and a quality, factory-scheduled maintenance record. In addition, they have usually been serviced by the very dealership that is offering them, so service records are usually available.

These vehicles are offered to the public through a special Red Carpet Lease program called Program Plus. Program Plus vehicles share many of the same great benefits of The PLAN.

With Program Plus you only pay on the portion of the vehicle's life that you use. This ensures low monthly lease payments compared to the finance purchase, in which you pay on the full value of the vehicle, along with all of the taxes that must be paid up front.

Often Program Plus assists customers in upgrading their leased vehicle to a newer or

*Program Plus offers used car value and flexibility that is second to none.*

better equipped used vehicle that sports the options and features you really want - all for the same monthly payment.

Ford's guaranteed future value is deducted from the price of this vehicle and allows you to select a short 24-month lease term. The short term enables you to avoid the high cost of repairs and maintenance that may increase with the age and kilometrage of the vehicle. You can trade your pre-owned vehicle every two years without any risk in trading value.

What's more, Program Plus guarantees the future value of your vehicle while offering all of the flexible lease-end options available on the Red Carpet Lease. When you return at the end of your 2-year lease term, you have three very flexible options to choose from that are based on that guaranteed future value.

1. You may return your leased vehicle and lease another new or pre-owned vehicle.
2. You may purchase your leased vehicle for the purchase option price (plus any applicable taxes).
3. You may simply return the vehicle once all your lease obligations have been fulfilled and simply "walk away".

More and more customers are looking at quality certified pre-owned cars. Program Plus offers flexibility and risk-free trading to buyers of pre-owned vehicles.





# FORD CREDIT HAS A PROGRAM FOR YOU



## GAP Protection

All Red Carpet Leases include special GAP

Protection at no extra cost to you. In the event your Red Carpet Lease vehicle is stolen or destroyed in an accident, Ford Credit will pay the difference (gap) between what your insurance company will pay and the net amount owing on your lease agreement.

Should your insurance pay more than the net amount, the surplus is refunded to you. This protection is not included in a finance-purchase arrangement.



## Plan Plus

This program has been especially designed for buyers who would like to purchase a new vehicle for cash, yet still receive the benefits of the Red Carpet Lease 2-Year PLAN.

Instead of paying cash on the entire price of the vehicle, buyers who choose Plan Plus pay cash on about half of the vehicle's price in one convenient, up-front lease payment.

Thus they enjoy the best of both worlds. They keep a substantial portion of the cash they would otherwise have

invested in the vehicle, yet enjoy such PLAN benefits as flexible lease-end options (choosing a new vehicle, purchasing the leased vehicle, walking away), guaranteed lease-end value, avoiding high maintenance costs, and no resale risk. In addition, Gap Protection and the possible tax advantages affiliated with leasing also apply.



## The Graduate Program

Ford and Ford Credit help put young people in the driver's seat with The Graduate Program. Ford Credit offers a special finance plan for recent graduates from an accredited college or university. If you have graduated within the last year and have proof of full-time employment within the next 120 days, you could qualify for this program.

In addition, graduates may qualify for additional incentives offered by Ford of Canada. These incentives are over and above most other consumer offers that are advertised at the time. Call 1-800-387-5535 for the free Graduate Program Information Kit or contact your local Ford or Mercury Dealer.

## THE PLAN

Additional Savings On Ford

### Optional Equipment

If you choose The PLAN and add optional equipment, you will still pay on just a portion of the cost of this equipment while enjoying the use of it over the full 2-year lease term.

## AUTO DEBIT

AutoDebit AutoDebit allows cus-

tomers the convenience of making payments by electronic transfer of funds from their chequing account to their Ford Credit account.



## Prior To Lease End

Your Dealer will contact you to schedule an appointment 120 days prior to the date your 24-month lease plan is to expire. A Red Carpet Lease renewal specialist will assist you in reviewing the many options available to you at that time. The 24-month lease PLAN is a continuous trading program designed to assist you in moving easily into a new vehicle. As a result, you can experience the best of both worlds: a lower cost of driving and the joy of driving a brand new vehicle.

ATLANTIC PROVINCES





# FORD CREDIT ACROSS CANADA

## 1. Vancouver

9600 Cameron St.,  
3rd Floor  
Burnaby, B.C.  
V3J 7N3  
(604) 420-0204

## 2. Calgary

7015 MacLeod Trail S.,  
Suite 500  
Calgary, Alberta  
T2H 2K6  
(403) 255-0171

## 3. Edmonton

10355 - 172 St.,  
Suite 500  
Centurion Plaza  
Edmonton, Alberta  
T5S 1K9  
(403) 485-0964

## 4. Winnipeg

1610 Ness Ave.,  
Suite 300  
Winnipeg, Manitoba  
R3J 3X3  
(204) 786-4861

## 5. London

1069 Wellington Rd. S.,  
Ste. 208  
London, Ontario  
N6E 2H6  
(519) 685-3150

## 6. Hamilton

21 King St. W.,  
Suite 900  
Hamilton, Ontario  
L8P 4W7  
(905) 522-9233

## 7. Toronto

3700 Steeles Ave. W.,  
Ste. 301  
Woodbridge, Ontario  
L4L 8K8  
(905) 850-3700

## 8. Ottawa

1410 Blair Place,  
Suite 400  
Gloucester, Ontario  
K1J 9B9  
(613) 749-9000

## 9. Montréal

6555 Boul. Metropolitain E.,  
Suite 101  
St-Leonard, Québec  
H1P 5J2  
(514) 327-6666

## 10. Québec

Place Iberville IV  
2954, boul. Laurier,  
Suite 160  
Ste-Foy, Québec  
G1V 4T2  
(418) 656-9125

## 11. Halifax

Sunnyside Mall,  
Suite 407  
1595 Bedford Highway  
Bedford, Nova Scotia  
B4A 3Y4  
(902) 835-2424



## '97 Cougar

*Value and a Driving Experience That Will Surprise You*

### Major Standard Features

- 3.8 litre V6 engine with multi port sequential EFI
- Dual air bags
- Power 4-wheel disc brakes
- Power windows
- Electronic AM/FM stereo cassette with 4 speakers
- Full-length floor console
- Air conditioning

### Major Optional Features

- 4.6 litre SOHC V8 EFI engine
- Anti-lock braking system
- Electronic traction assist (requires ABS)
- Fingertip speed control\*
- Remote keyless entry system with illuminated entry system
- Premium electronic AM/FM stereo with CD player
- Anti-theft alarm system

\*Option included in a Preferred Equipment Package

### Preferred Equipment Package

We've grouped several of Cougar's most appealing options into the Preferred Equipment Package shown below and we've priced it to yield price reductions over ordering these options individually. See your Dealer for details.

Model Package #	XR7 380A
Fingertip speed control	•
Cast aluminum wheels, 15" 21-spoke	•
P215/70R15 BSW tires	•
Power lock group	•
Leather-wrapped steering wheel and shift knob	•
6-way power driver's seat	•
Illuminated entry system	•

### Dimensions

	mm (in.)
Wheelbase	2870 (113.0)
Length	5077 (199.9)
Height	1333 (52.5)
Width	1846 (72.7)
Seating Capacity	5

Top - Cougar XR7 shown in Laser Red Tinted Clearcoat  
Below Left - Cougar's rear view seen in Alpine Green Clearcoat Metallic



### 30th Anniversary Edition

The new 30th Anniversary Edition Cougar XR7 resonates with the sport elegance that has made this coupe a North American original since its introduction. Driving enthusiasts everywhere will relish the unique design touches of this striking commemorative edition. From upgraded wheels and tires to custom-designed badging, this Cougar is special. It features:

- Distinctive Dark Toreador Red Clearcoat Metallic exterior finish
- Light Prairie Tan interior
- Special C-pillar 30th anniversary badge
- Custom seat trim with 30th anniversary logo
- Driver/passenger power seats
- Unique sport seats with driver/passenger power lumbar and seat back bolster adjustments
- Front floor mats with anniversary logo
- Unique stylish 16" lacy-spoke aluminum wheels
- Goodyear Eagle GT-4 16" Touring Tires
- 4-wheel disc brakes with larger diameter front rotors
- Sport-tuned suspension
- Electrochromic (auto-dimming) inside rearview mirror
- Special Commemorative Package (the following features the 30th Anniversary Edition logo: car umbrella, 2 ignition keys, key chain, Mini Maglite® car flashlight, Cross™ pen, Dash plate)

Some standard and optional features may only be available on specific models, or as part of a Preferred Equipment Package. See your Dealer for details.





## '97 Grand Marquis

*Amenities and Refinement You'll Enjoy Sharing With Others*



### Preferred Equipment Packages

We've grouped several of Grand Marquis's most appealing options into Preferred Equipment Packages which yield price reductions over ordering these options individually. Additional packages are available. See your Dealer for details.

Model Package #	GS 450A	LS 455A	LS 456
Power lock group	•	s	
Illuminated entry system	•	s	
Front cornering lamps		•	•
Luxury light group	•	•	•
Anti-lock brakes with Traction Assist	•	•	•
Bodyside paint stripe		•	•
Leather-wrapped steering wheel		•	•
12-spoke aluminum wheels		•	•
Remote keyless entry system		•	•

s = Standard

### Major Standard Features

- 4.6 litre SOHC V8 engine
- 4-speed electronic automatic overdrive with overdrive lockout
- Dual air bags
- Speed sensitive, variable-assist power steering with tilt steering wheel and speed control
- Power windows
- 6-way power driver's seat with driver's side power recliner
- Air conditioning
- Electronic AM/FM stereo with cassette and 4 speakers

Top - Grand Marquis LS in Toreador Red Clearcoat Metallic

Left - Interior in Light Graphite with available leather seating surfaces (LS only)

Bottom left - A 583-litre (20.6 cu. ft.) trunk is one of the largest in its class

### Major Optional Features

- Anti-lock brakes with traction assist\*
- Remote keyless entry system\*\*
- Electronic automatic temperature control\*\*\*
- Handling package (includes rear air suspension)
- Premium electronic AM/FM stereo with cassette\*\*\*

\*Option included in a Preferred Equipment Package

\*\*Optional on GS, included in a Preferred Equipment Package on LS

\*\*\*Available on LS model only

### Dimensions

	mm	(in.)
Wheelbase	2905	(114.4)
Length	5379	(211.8)
Height	1443	(56.8)
Width	1976	(77.8)
Seating Capacity	6	

Some standard and optional features may only be available on specific models, or as part of a Preferred Equipment Package. See your Dealer for details.



## '97 Mark VIII

*Driving Exhilaration to Stir Your Soul*

### The Lincoln Commitment

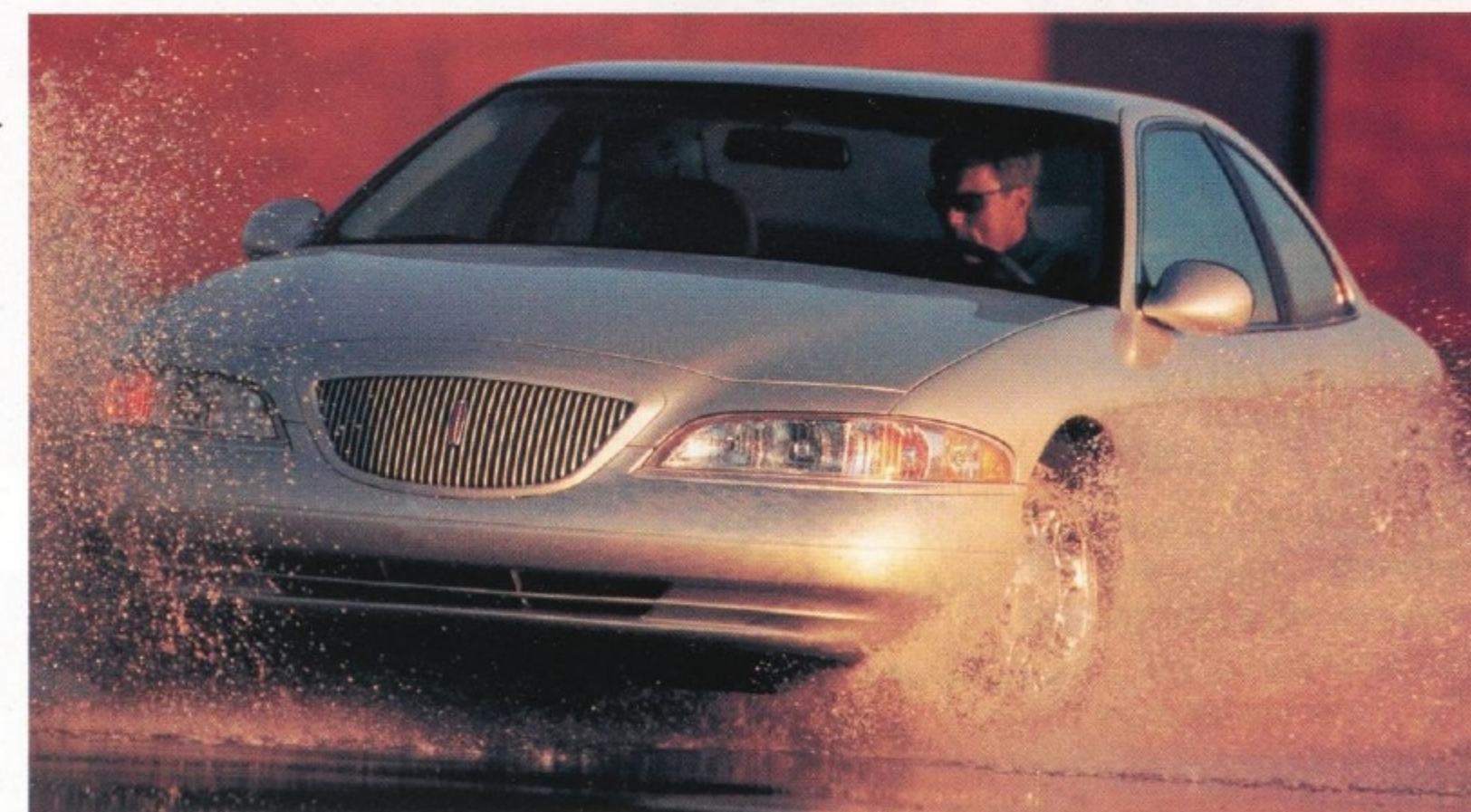
Over 76 years ago Lincoln's commitment to excellence defined what a luxury car should be. That commitment to excellence - to the art and science of building fine automobiles - is just as true today and is an integral part of every Lincoln we build. It begins with superbly designed and engineered vehicles. It continues with a remarkable array of warranties, services and programs. And it culminates in a driving and ownership experience that is second to none. See your Lincoln Dealer for the full range of benefits and services provided by The Lincoln Commitment which makes your Lincoln a pleasure to drive and to own.

### Major Standard Features

- 4.6 litre 32-valve, 280 horsepower, DOHC InTech V8 engine
- Speed-sensitive variable assist power steering
- Rear air spring suspension with load level control
- Anti-lock braking system with electronic traction control
- Dual air bags
- Air conditioning with electronic automatic temperature control
- Leather seats with 6-way power driver and passenger seats, power lumbar and 3-user driver memory
- JBL premium audio system with single-play CD radio

### Major Optional Features

- Heated seats
- Power moonroof
- Cellular telephone
- Trunk-mounted compact disc changer
- Chrome wheels



Above - Lincoln Mark VIII LSC shown in Silver Frost Clearcoat Metallic. The Mark VIII LSC raises driving excitement to the next level. Get ready to "Fly the Coupe". See Dealer for the complete details concerning the many exclusive LSC features

### Dimensions

	mm (in.)
Wheelbase	2870 (113.0)
Length	5265 (207.3)
Height	1361 (53.6)
Width	1900 (74.8)
Seating Capacity	5

Top - Mark VIII shown in Bright Toreador Red Tinted Clearcoat Metallic

Some standard and optional features may only be available on specific models, or as part of a Preferred Equipment Package. See your Dealer for details.





## '97 Town Car

*An Enduring and Uncompromised Classic*

### Major Standard Features

- 4.6 litre SOHC V8 engine
- Anti-theft alarm system
- Remote keyless entry system
- Dual air bags
- Anti-lock braking system
- JBL audio system with digital signal processing\*
- Air conditioning with automatic temperature control
- 6-way power driver and passenger seats with power reclining, memory seat and power lumbar support†

### Major Optional Features

- Electronic traction assist\*
- Leather seats
- Electrochromic automatic dimming rear view mirror and compass\*
- Trunk-mounted compact disc changer\*\*
- 8 window 16" chrome wheels
- Power moonroof†

\*Standard on Cartier model only

\*\*Available on Signature and Cartier models only

†Available on Signature model only

Top - Signature Series shown in Silver Frost Clearcoat Metallic

Above right - Town Car in Black Clearcoat

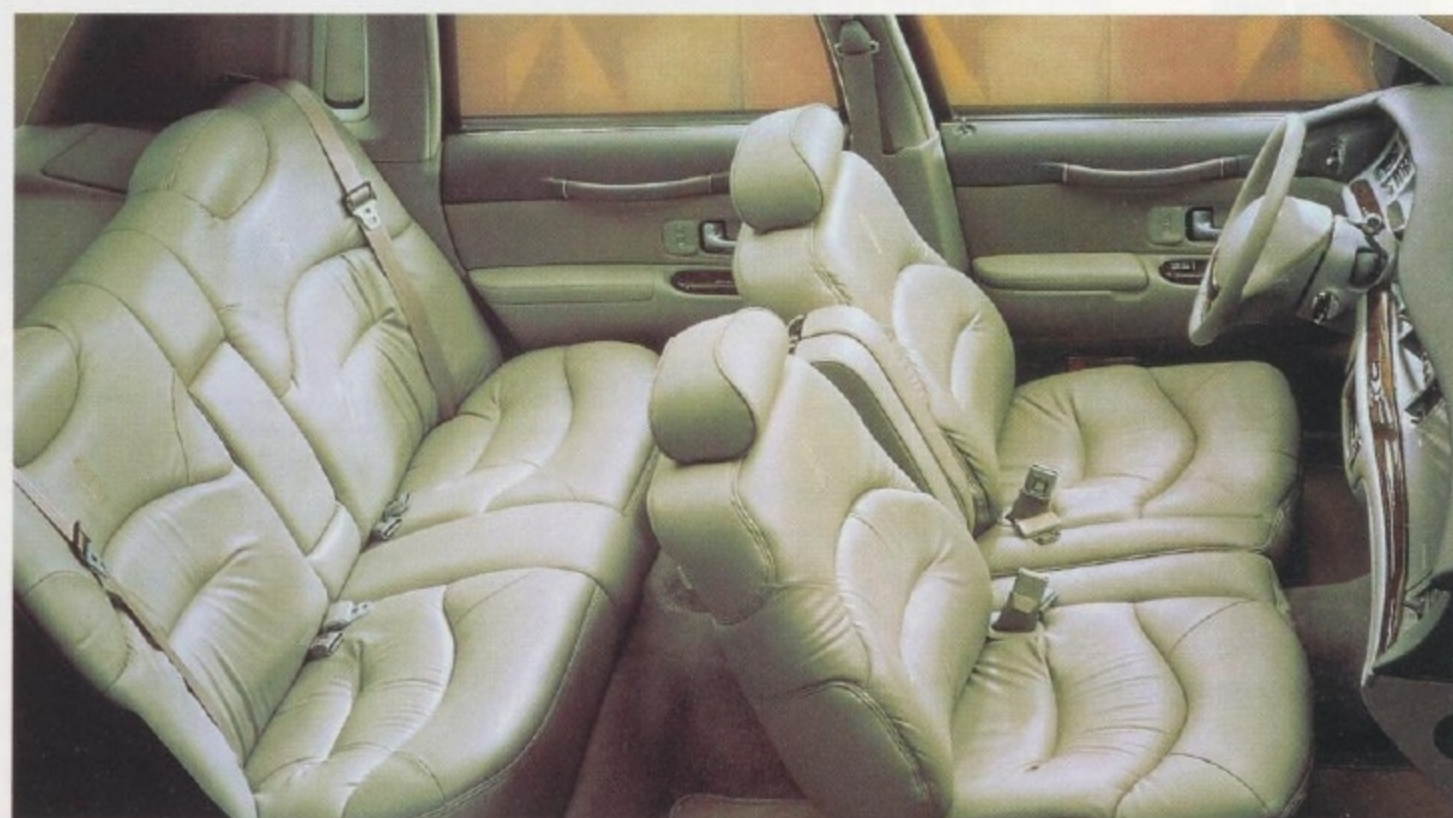
Right - Signature Series shown with available Light Graphite leather seating surfaces



Town Car is available in Executive, Signature and Cartier Series

### Dimensions

	mm (in.)
Wheelbase	2981 (117.4)
Length	5560 (218.9)
Height	1445 (56.9)
Width	1948 (76.7)
Seating Capacity	6



Some standard and optional features may only be available on specific models, or as part of a Preferred Equipment Package. See your Dealer for details.



## '97 Continental

*Advanced Technology in an Elegant Package*

### Major Standard Features

- 4.6 litre 32-valve DOHC InTech V8 engine
- Dual air bags
- Anti-lock braking system with all-speed electronic traction control
- Rear air suspension with automatic load leveling
- Memory profile system
- Leather seats with 6-way power driver and passenger seats
- Air conditioning with automatic climate control
- High level audio system with AM/FM stereo and cassette



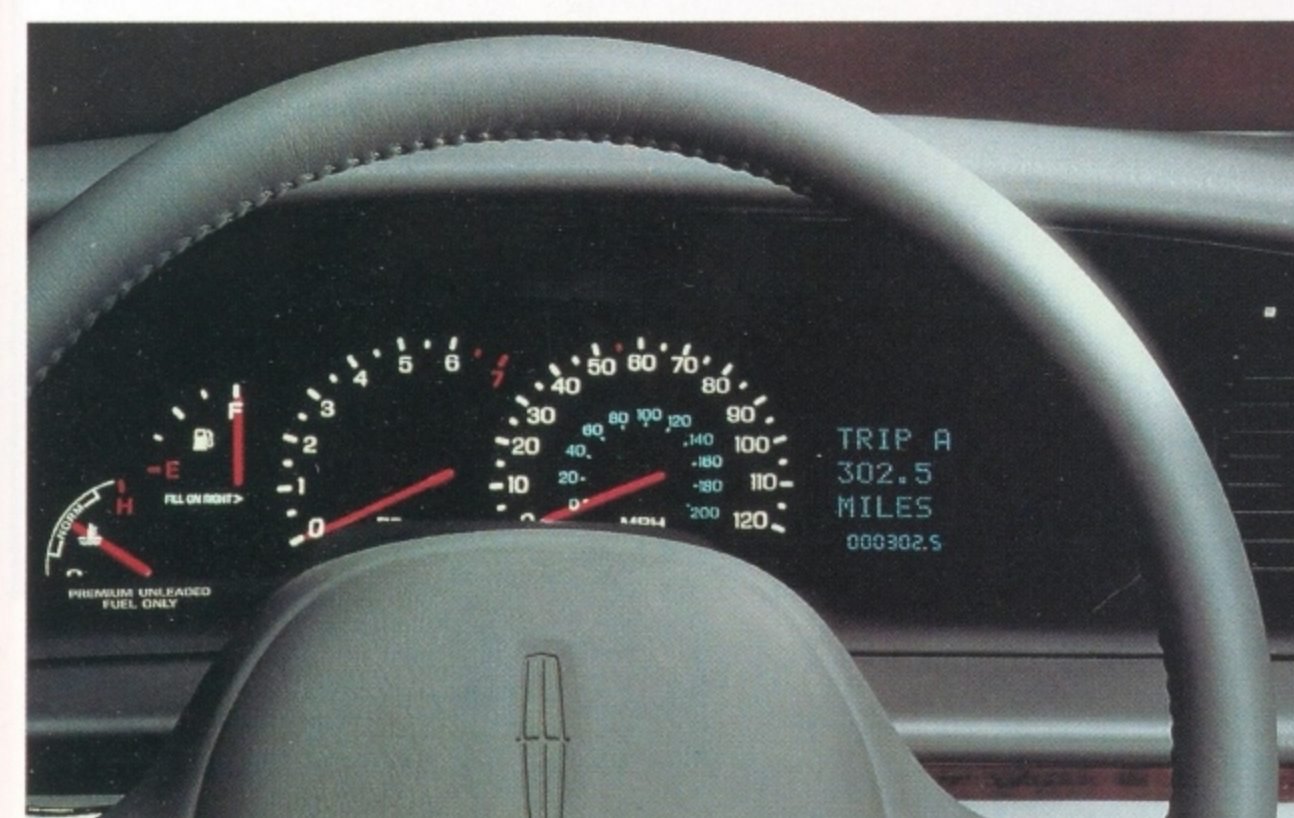
### Dimensions

	mm (in.)
Wheelbase	2768 (109.0)
Length	5420 (206.3)
Height	1422 (56.0)
Width	1869 (73.6)
Seating Capacity	5

Top - Continental shown in Ivory Pearlescent Clearcoat Metallic

Above - Continental shown in Black Clearcoat

Below - State-of-the-art Message Centre



(Metric instrumentation is standard in Canada)

### Major Optional Features

- Heated seats
- Mirrors, electrochromic auto dimming outside
- Wheels, chrome double window
- JBL audio system
- Power moonroof
- Compact disc changer

#### Luxury Group I

- Mirrors, electrochromic auto dimming outside
- JBL audio system
- Wheels, chrome double window

#### Luxury Group II

- Mirrors, electrochromic auto dimming outside
- Power moonroof
- Heated seats
- JBL audio system
- Programmable garage door opener
- Compact disc changer
- Wheels, chrome double window

Some standard and optional features may only be available on specific models, or as part of a Preferred Equipment Package. See your Dealer for details.





## '98 Windstar

*Designed for the Safety of You and Yours*

### Dimensions

	mm (in.)
Wheelbase	3066 (120.7)
Length	5110 (201.2)
Height	1727 (68.0)
Width	1915 (75.4)
Seating Capacity	7

Above - Ford Windstar Limited in Deep Forest Green Clearcoat Metallic

Right - Windstar Limited features low-back quad captain's chairs plus 3-passenger bench seat with adjustable seat track. Leather seating surfaces are standard on Limited. Some equipment shown may be optional

Above Right - Windstar's new Family Entry System features an extended driver's door and a tip/slide driver's seat

Far Right - Windstar's versatility provides a variety of seating and cargo-carrying combinations



**NEW  
1998**  
Arriving Feb. 13/97

THE  
MINIVAN  
Centre  
AEROSTAR WINDSTAR VILLAGE

### Major Standard Features

- 3.0-litre V6 engine
- 4-wheel anti-lock braking system
- Dual air bags
- Cloth reclining bucket front seats with reclining and/or removable 2nd and 3rd row seats†
- Extended driver's side door
- Tip/slide driver's seat\*
- Electronic AM/FM stereo with 4 speakers and digital clock
- Child-proof sliding door lock
- Air conditioning\*

### Major Optional Features

- All-speed electronic traction control\*\*
- Speed control with tilt steering wheel\*
- 3.8 litre V6 engine\*
- Floor console
- Electronic AM/FM stereo with clock and cassette\*\*\*
- Luggage rack\*\*\*\*

\*Standard on LX and Limited models only

\*\*Not available on 3.0 L model

\*\*\*Standard on LX model

\*\*\*\*Option included in a Preferred Equipment Package. Not available on 3.0 L model

†Reclining feature not available in 3.0 L model



### Preferred Equipment Packages

We've grouped several of Windstar's most appealing options into Preferred Equipment Packages which yield price reductions over ordering these options individually. Additional packages are available. See your Dealer for details.

Model Package #	3.0L 350A	GL 357A	LX 360A	Limited 361A
Air conditioning	•	•	S	S
Power convenience group (includes power windows, locks and mirrors)	•	•	S	S
Tip/slide driver's seat		•	S	S
Electronic AM/FM Stereo/Clock/Cassette		•	S	
Light group		•	S	S
Luggage rack		•	•	•
Bodyside moulding		•	S	S
Tilt steering wheel with speed control		•	S	S
3.8L SPI V6 engine with automatic overdrive		•	S	S
Privacy glass		•	•	•
Remote entry			•	S
Front and rear floor mats			•	•
Two tone paint			•	
Auxiliary rear air conditioning and heating			•	S



### Five Stars For Windstar.

Windstar is the only minivan to earn five stars - the highest possible U.S. Government front-end crash test rating - for both the driver and front passenger.††



†† U.S. National Highway Traffic Safety Administration data used in comparing vehicles within 226 kg (500 lbs.). Always wear your safety belt and seat children in the rear seat.





## '97 Aerostar

### Hard Working Value

#### Major Standard Features

- 3.0 L V6 engine with automatic overdrive transmission (4.0 L V6 with extended models)
- Power brakes with rear wheel anti-lock braking system
- Driver's side air bag
- Dual front reclining captain's chairs with passenger side underseat storage bin
- Two rear passenger bench seats with folding seatbacks
- Air conditioning
- Electronic AM/FM stereo with digital clock

Top - Aerostar XLT shown in Light Prairie Tan Clearcoat Metallic

Right - Standard 7-passenger seating in Medium Grey

Below right - Aerostar XLT with a Sport Appearance Package

#### Preferred Equipment Packages

We've grouped several of Aerostar's most appealing options into Preferred Equipment Packages which yield price reductions over ordering these options individually. Additional packages are available. See your Dealer for details.

Model Package #	XLT Regular Length 636A	XLT Extended Length 641A
7-passenger seating with dual captain's seats (includes manual lumbar support and map pockets)	•	•
Privacy glass	•	•
Speed control with tilt steering wheel	•	•
Convenience group (electronic AM/FM stereo cassette with clock, plus power convenience group which includes power windows and door locks and dual remote-control electric mirrors)	•	•
Luggage rack	•	•



#### Major Optional Features

- High capacity air conditioning with auxiliary heater
- Floor console with cupholders and storage bin
- Trailer towing package
- Sport Appearance Package
- Premium electronic AM/FM stereo with clock and CD player

#### Dimensions

	Regular Length mm (in.)	Extended Length mm (in.)
Wheelbase	3020 (118.9)	3020 (118.9)
Length	4442 (174.9)	4833 (190.3)
Height	1836 (72.3)	1844 (72.6)
Width	1821 (71.7)	1821 (71.7)
Seating Capacity	7	7



## '97 Villager

### Advanced Driving Dynamics in a Most Refined Minivan

#### Preferred Equipment Packages

We've grouped several of Villager's most appealing options into Preferred Equipment Packages which yield price reductions over ordering these options individually. Additional packages are available. See your dealer for details.

Model Package #	GS 975A	LS 965A
Anti-lock braking system	•	s
Aluminum wheels	•	
Deluxe aluminum wheels		•
Dual power mirrors	•	s
Tilt steering wheel with speed control	•	s
Leather-wrapped steering wheel with speed control		•
Power windows / locks	•	s
Remote keyless entry system	•	•
8-way power driver's seat	•	•
Flip-open liftgate window	•	•
Privacy glass	•	s
Luggage rack	•	s
Under seat storage	•	s
Auxiliary rear heating and air conditioning	•	
Electronic automatic temperature control - includes rear heating and air conditioning	•	
Premium sound system with cassette	•	
Dual illuminated vanity mirrors	•	
Quad captain's chairs	•	
4-way power passenger seat	•	
Heated dual power mirrors	•	
Autolamp on/off delay	•	
Electronic instrument cluster	•	

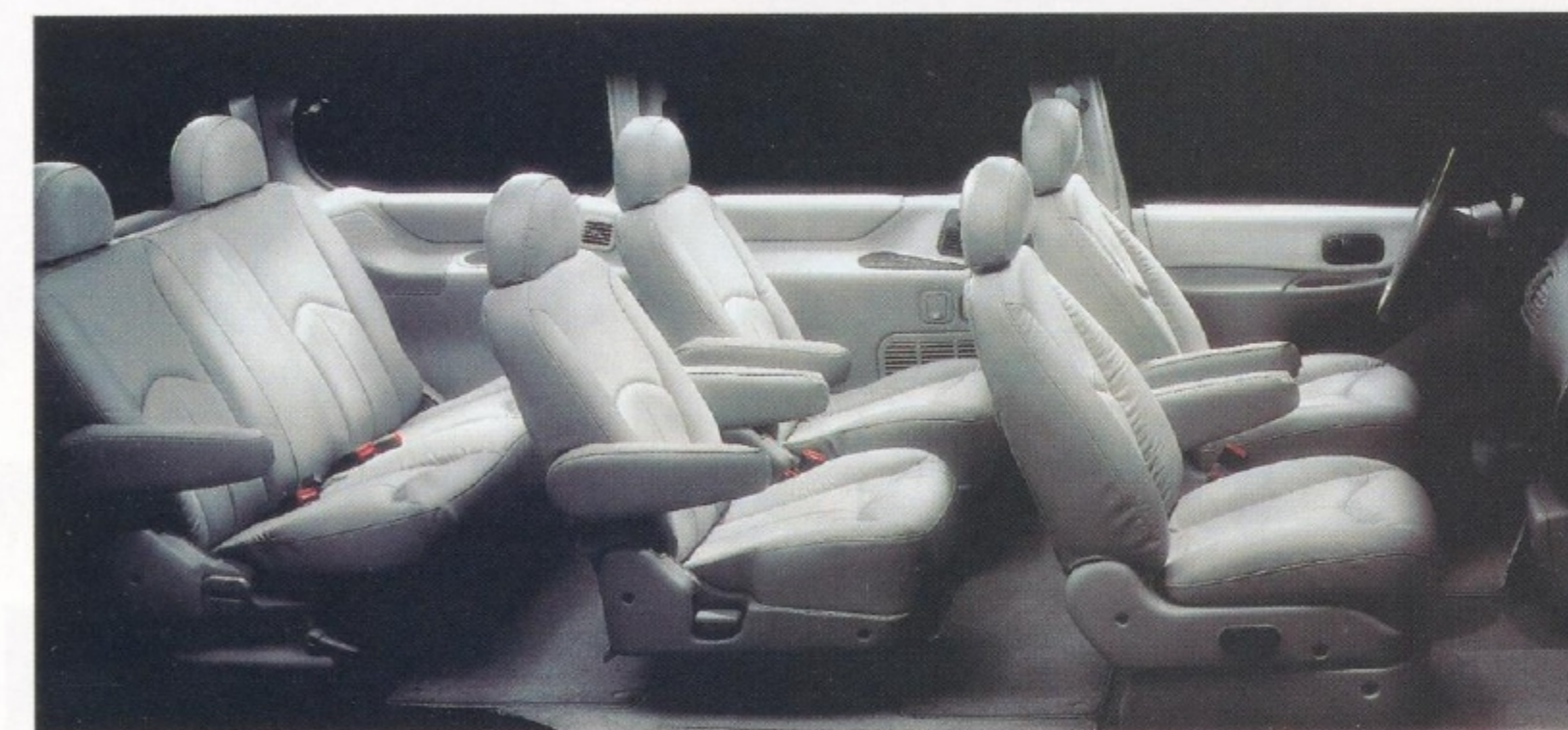
s = Standard

#### Dimensions

	mm (in.)
Wheelbase	2849 (112.2)
Length	4831 (190.2)
Height	1673 (65.9)
Width	1874 (73.8)
Seating Capacity	7

Above - Villager LS shown in Medium Wedgewood Blue Clearcoat Metallic over Silver Clearcoat Metallic

Below - LS interior shown with optional Graphite leather seating surfaces and optional Quad Captain's Chairs



#### Major Standard Features

- 3.0 litre overhead cam V6 engine
- Dual air bags
- Anti-lock braking system\*
- Cloth reclining front bucket seats with movable 3-passenger rear bench and 2-passenger quick release rear bench
- Air conditioning\*
- Electronic AM/FM stereo with cassette and 4 speakers

#### Major Optional Features

- Integrated child safety seats\*\*
- Flip open liftgate window\*\*\*
- Premium sound with cassette and CD changer
- Anti-theft system
- Trailer tow prep package

\*Standard on LS and Nautica models only

\*\*Not available on Nautica model

\*\*\*Option included in a Preferred Equipment Package





## '97 Expedition

*The New Benchmark Among Full Size Utilities*



Top - Expedition can get you and your cargo anywhere with its available Trailer Tow Group and 4X4 system

Left - Among Expedition's handy features are: Liftgate with flip-up glass, rear window intermittent wiper/washer and maximum trailer tow rating of 3629kg / 8000 lbs. (4X2 when equipped with 5.4L engine)

Right - Seat five, seven, eight or nine people with the third row seat option. The second row seat tips forward for easy access to the third row.

Far right - Practical and handsome, Expedition features solar tinted glass, dual fold away power mirrors, optional 17" cast aluminum wheels, and optional luggage rack

**Voted Best New Sport Utility** **AJAC** Automobile Journalists Association of Canada



### Dimensions

	mm (in.)
Wheelbase	3025 (119.1)
Length	5197 (204.6)
Height	1943 (76.5)**
Width	2004 (78.6)

Seating Capacity up to 9\*\*\*

\*\*4x4 with 16" tires

\*\*\*XLT with front split bench optional third row



### Major Standard Features

- 4.6 litre Triton overhead cam V8 engine with electronic 4-speed automatic transmission
- 4-wheel power disc brakes with anti-lock braking system
- Speed sensitive variable assist power steering
- Dual air bags
- Remote keyless entry system with illuminated entry
- Passive anti-theft system
- Leather captain's chair front seats with 6-way power driver's seat\*
- 2nd row 60/40 split cloth bench seat with centre armrest and cupholders
- Premium AM/FM stereo with cassette and 4 speakers
- Air conditioning

### Major Optional Features

- 5.4 litre Triton V8 engine
- Third row seat
- Limited slip rear axle
- Class III trailer towing group
- Illuminated running boards
- Speed control\*
- Load leveling suspension
- 17" cast aluminum wheels (4X4 only)

\*Standard on Eddie Bauer model only

### Preferred Equipment Packages

We've grouped several of Expedition's most appealing options into Preferred Equipment Packages which yield price reductions over ordering these options individually. Additional packages are available. See your dealer for details.

Model Package #	XLT 566A	Eddie Bauer 571A
Captain's chairs, cloth w/floor console	•	
Captain's chairs, leather w/floor console		\$
6-way power driver's seat	•	\$
Privacy glass	•	\$
Dual illuminated visor mirrors	•	\$
Luggage rack	•	\$
Illuminated running boards	•	
Speed control	•	\$
Cast aluminum wheels 17" (4X4 only)		•
Forged aluminum wheels	•	\$
5.4L SEFI V-8 engine		•
Ford MACH audio system / cassette / 7 premium speakers		•
P265/70R17 OWL all-terrain tires (4X4 only)		•
Power signal mirrors		•
\$ = Standard		

Some standard and optional features may only be available on specific models, or as part of a Preferred Equipment Package. See your Dealer for details.





## '97 Explorer *More Power to You*



### Preferred Equipment Packages

We've grouped several of Explorer's most appealing options into Preferred Equipment Packages which yield price reductions over ordering these options individually. Additional packages are available. See your Dealer for details.

Model Package #	4-Door XLT 691B	4-Door Eddie Bauer 696A
Premium AM/FM stereo with clock and cassette	•	s
Luggage rack	•	s
Power 6-way cloth sport bucket seats with power lumbar support	•	•
Power 6-way leather sport bucket seats with power lumbar	•	•
Luxury group: high-series floor console, front overhead console (includes rear reading lamps, electronic compass and outside temperature readout), electronics group (includes 2 keyless remote transmitters, keypad, anti-theft and autolock/relock feature), fog lamps	•	•
Floor mats and cargo cover group	•	s
Premium group (includes electronic automatic temperature control, message centre and JBL audio system: cassette, subwoofer, amplifier, digital signal processor and power antenna)	•	•
4.0 litre SOHC V-6 engine with 5-speed automatic transmission	•	s

s = Standard

### Major Standard Features - 4-door Eddie Bauer

- 4.0 litre SOHC V6 engine with 5-speed automatic transmission
- 4-wheel power disc brakes with anti-lock braking system
- Power steering
- Power equipment group
- Dual air bags
- Air conditioning
- Premium electronic AM/FM cassette stereo with digital clock
- Leather sport bucket seats with 6-way power driver's seat and power lumbar support

### Major Optional Features - 4-door Eddie Bauer

- 5.0 litre V8 engine with automatic transmission
- Running Boards
- Integrated rear child seat
- 4.10 limited slip/trailer towing package

### Dimensions

	2-Door 4x4* mm (in.)	4-Door 4x4* mm (in.)
Wheelbase	2583 (101.7)	2832 (111.5)
Length	4536 (178.6)	4788 (188.5)
Height	1714 (67.5)	1717 (67.6)
Width	1783 (70.2)	1783 (70.2)
Seating Capacity	4	5 or 6**

\*Explorer is also available in 4x2 models

\*\* 6 passenger with XL and XLT optional split front bench seat

Top - Explorer Eddie Bauer shown in Medium Willow Green Clearcoat Metallic over Light Prairie Tan Clearcoat Metallic

Above - Explorer Eddie Bauer interior with optional Willow Green leather seating

Some standard and optional features may only be available on specific models, or as part of a Preferred Equipment Package. See your Dealer for details.



## '97 Ranger *The Foremost Authority on Fun Tough*

### Dimensions

	Regular Cab mm (in.)	SuperCab mm (in.)
Wheelbase	2893 (113.9)	3185 (125.4)
Box Length (at floor)	2128 (83.8)	1823 (71.8)
Height (at cargo floor)	678 (26.7)†	685 (27.0)†
Width	1763 (69.4)	1763 (69.4)
Seating Capacity	3	5

† On 4x2 models only. See your Dealer for 4x4 dimensions

### Availability

4x2 and 4x4; Regular Cab short wheelbase (6' box), Regular Cab long wheelbase (7' box) and SuperCab (6' box); Styleside and Flareside box; in S, XL, XLT, STX and Splash models.

### Major Standard Features - XLT Regular Cab and SuperCab Models 4x4

- 2.3 litre SEFI I-4 engine with 5-speed overdrive manual transmission
- 3.0 litre SEFI V6 engine with 5-speed overdrive manual transmission (on SuperCab 4x4 models)
- Power brakes with rear anti-lock braking system
- Power steering
- Driver's side air bag
- Electronic AM/FM stereo with digital clock
- Rear jump seat (SuperCab only)
- Mud flaps (except Splash 4x2)
- 60/40 split cloth front bench seat

Top - Ranger XLT Regular Cab 4x4 in Silver Clearcoat Metallic

Below - Ranger Splash Regular Cab 4x2 in Canary Yellow Clearcoat



Some standard and optional features may only be available on specific models, or as part of a Preferred Equipment Package. See your Dealer for details.

### Major Optional Features\*\*

- 3.0 litre SEFI V6 engine with 4-speed automatic overdrive transmission
- 4.0 litre SEFI V6 engine with 5-speed automatic overdrive transmission
- Sport cloth front bucket seats with floor console
- 4-wheel anti-lock braking system
- Air conditioning
- Passenger side air bag
- Power window and door lock group
- Remote keyless entry system with anti-theft system
- Electronic AM/FM/Stereo/Clock with CD player

### Preferred Equipment Packages

We've grouped several of Ranger's most appealing options into Preferred Equipment Packages which yield price reductions over ordering these options individually. Additional packages are available. See your Dealer for details.

Model Package #	Regular Cab XL 431A	Regular Cab XLT 465A
Electronic AM/FM stereo with clock and cassette	•	•
Electronic AM/FM stereo with clock	•	•
Power mirrors	•	•
XLT group	•	•
Electronic AM/FM stereo with clock	•	•
Deep dish cast aluminum wheels*	•	•
Sport cast aluminum wheels***	•	•
Air conditioning	•	•
Power steering**	•	s
Leather wrapped tilt steering wheel with speed control	•	•
60/40 cloth split bench seats	•	s

s = Standard \*XLT 4x2 only \*\*Manual steering on XL 4x2 \*\*\*4x4 only





## '97 F-Series F-150/F-250

**Voted Best New Pick-Up**  Automobile Journalists Association of Canada

### Strength After Strength After Strength



#### Major Standard Features - F-150 & F-250 XLT Regular Cab and SuperCab Models

- 4.2 litre EFI V6 engine with 5-speed overdrive manual transmission
- 4.6 litre EFI Triton V8 engine (Standard on F-250 and all F-150 SuperCab 4x4)
- Power front disc/rear drum brakes with rear wheel anti-lock braking system
- 5 all-season radial tires on argent style wheels with chrome hubs
- Power steering
- Dual air bags
- Power door locks, windows and mirrors
- Front cloth reclining split bench seat with manual driver lumbar support
- Electronic AM/FM stereo with 4 speakers
- Dual cupholders mounted in the instrument panel
- Rear passenger side entry door and rear split bench seat (SuperCab only)

#### Major Optional Features - F-150 & F-250\*\*

- 4.6 litre EFI Triton V8 engine (Standard on F-250/F-150 SuperCab 4x4)
- 5.4 litre EFI Triton V8 engine
- 4-speed automatic overdrive transmission
- 4-wheel anti-lock braking system (Standard on Lariat)
- Captain's chairs with console
- Speed Control with Tilt Steering Wheel
- Air conditioning
- Class III trailer towing group
- LT245/75R16D Tires
- Rear storage bin (Regular Cab only)
- Remote keyless entry system with anti-theft system
- Electronic AM/FM stereo with cassette and clock\*\*
- 6-Disc CD Changer with Premium AM/FM Stereo Cassette
- Heavy Duty Service Package
- Load Leveling Suspension (F-250 Only)

\*\* Options may not be available on all models and some are included in a Preferred Equipment Package

† MMVA reporting



**Selected Truck Of The Year**  Motor Trend Magazine

#### Dimensions

	F-150 Regular Cab Long Wheelbase mm (in.)	F-150 SuperCab Short Wheelbase mm (in.)
Wheelbase - 4x2	3518 (138.5)	3518 (138.5)
Wheelbase - 4x4	3526 (138.8)	3526 (138.8)
Length - 4x2	5608 (220.8)	5608 (220.8)
Length - 4x4	5646 (222.3)	5646 (222.3)
Height - 4x2	1831 (72.1)	1844 (72.6)
Height - 4x4	1905 (75.0)	1913 (75.3)
Width - 4x2	1991 (78.4)	1991 (78.4)
Width - 4x4	2019 (79.5)	2019 (79.5)
Seating Capacity	3	6

Short wheelbase Regular Cabs and Long wheelbase SuperCabs may differ. See Dealer for details.



#### Preferred Equipment Packages

We've grouped several of F-150's and F-250's most appealing options into Preferred Equipment Packages which yield price reductions over ordering these options individually. Additional packages are available. See your Dealer for details.

Selected F-150 PEPs	F-150 XL Model Package # 805A	F-150 XLT 810A	F-150 Lariat 815A
Argent styled steel wheels	•	s	
Wrought polished aluminum wheels	•		
Chrome rear step bumper	•	s	s
Air conditioning	•	•	•
Electronic AM/FM stereo with cassette and clock	•	•	•
Tilt steering wheel with speed control		•	•
Power driver's seat with autolamp			•
Lower two-tone paint			•

s = Standard

Selected F-250 PEPs	F-250 XL Model Package # 846A	F-250 XLT 850A	F-250 Lariat 855A
Chrome rear step bumper	•	s	s
Air conditioning	•	•	•
Electronic AM/FM stereo with clock and cassette	•	•	•
Tilt steering wheel with speed control	•	•	
Power driver's seat with autolamp		•	
Lower two-tone paint		•	

s = Standard

#### Availability

**F-150** 4x2 and 4x4; Regular Cab and SuperCab; Regular Wheelbase (6-1/2' box) and Long Wheelbase (8' box); Styleside and Flareside box; in Standard, XL, XLT and Lariat models.

**F-250** 4x2 and 4x4; Regular Cab (8' box) and SuperCab (6-1/2' box) with a Styleside box; in Standard, XL, XLT and Lariat models

Top Left - F-250 XLT SuperCab in Black Clearcoat. A third door is standard on all SuperCab models.

Above - F-150 Flareside is as stylish as it is tough

Left - F-150 XLT SuperCab 4x4 in Black Clearcoat

Far Left - 40/60 rear split bench seat folded down provides a flat steel load floor

Some standard and optional features may only be available on specific models, or as part of a Preferred Equipment Package. See your Dealer for details.





## '97 F-250 Heavy Duty/F-350/F-Super Duty

### The Trucks to Tackle Any Job

#### Major Standard Features

- Power steering
- Engine block heater
- Powerpoint
- Tinted glass
- Interval wipers
- F-250HD & F-350
  - 5.8 litre V8
  - Power brakes with rear wheel anti-lock brake system
- F-Super Duty
  - 7.5 litre V8
  - 4-wheel disc brakes

#### Major Optional Features

- 7.3 litre V8 "Power Stroke"™ Turbo Diesel
- Air conditioning
- Super engine cooling
- Electronic AM/FM stereo with cassette and clock
- Bright low-mount swingaway mirrors

† The trademark Power Stroke is used under license from C.M.R. Canada Ltd.

Above top: F-350 Crew Cab pickup with dual rear wheels  
Above bottom: F-250 Heavy Duty SuperCab 4x4 pickup

#### Dimensions

	Regular Cab Styleside Pickup mm (in.)	SuperCab Styleside Pickup mm (in.)	Crew Cab Styleside Pickup mm (in.)	Chassis Cab Regular Cab mm (in.)
Wheelbase - SRW/DRW	3378 (133)	3526/3937 (138.8/155)	3866/4277 (152.2/168.4)	3475/4084/4684 (136.8/160.8/184.8)
Length - SRW/DRW	5418 (213.3)	5565/5977 (219.1/235.3)	5906/6317 (232.5/248.7)	5532/6142/6751 (217.8/241.8/265.8)
Height - 4x2*	1854 (73)	1877 (73.9)	1864 (73.4)	1867 (73.5)
Height - 4x4*	1946 (76.6)	1953 (76.9)	1936 (76.2)	1981 (78)
Maximum Width - SRW	2007 (79)	2007 (79)	2007 (79)	2200/2286/2362 (87.4/90/93)
Maximum Width - DRW	(95.4)	(95.4)	(95.4)	(Rear axle width)
Seating Capacity	3	6	6	3

\*Regular wheelbase only. Cab heights may differ from 250HD to F350. See your Dealer for details.

#### Preferred Equipment Packages

We've grouped several F-250 HD, F-350 and F-Super Duty's most appealing options into Preferred Equipment Packages which yield price reductions over ordering these options individually. See your Dealer for details.



## '97 Econoline

For Business or Pleasure, Econoline is the Established Leader

#### Major Standard Features - E150 Standard

- 4.2 litre EFI V6 engine with 4-speed automatic overdrive transmission
- Power brakes with rear wheel anti-lock braking system
- Driver side and passenger side (under 8500 GVWR only) air bags
- Solar tinted glass
- Power steering

#### Major Optional Features - E150 Standard

- 5.4 litre EFI V8 engine with electronic 4-speed automatic transmission
- Deluxe console
- Sliding side cargo door
- Trailer towing package
- Windows all around
- Heavy Duty service package



Top - Econoline Super Van in Portofino Blue Clearcoat Metallic with hinged side cargo door

Above - Econoline Van with sliding side cargo door

Below - Econoline's ergonomically designed instrument panel with deluxe console

#### Dimensions

	Regular Van* mm (in.)	Super Van* mm (in.)
Wheelbase	3505 (138.0)	3505 (138.0)
Length	5379 (211.8)	5887 (231.8)
Height	2049 (80.7)**	2118 (83.4)**
Width	2014 (79.3)	2014 (79.3)
Seating Capacity	2	2

\*E150 models

\*\*Dimensions vary on E250 and E350 models. See Dealer for details.



Some standard and optional features may only be available on specific models, or as part of a Preferred Equipment Package. See your Dealer for details.





## '97 Club Wagon

*The Best Selling Full Size Passenger Van in North America for 8 Straight Years\**

### Major Standard Features - XLT Regular

- 4.2 litre EFI V6 engine with 4 speed automatic overdrive transmission
- 4-wheel anti-lock braking system
- Dual air bags
- Power door locks and windows
- Air conditioning
- Dual cloth captain's chairs with two 3-passenger rear bench seats
- Electronic AM/FM stereo with digital clock and 6 speakers

### Major Optional Features - XLT Regular

- 5.4 litre V8 engine with 4-speed automatic transmission
- Power driver's seat
- Sliding side cargo door
- Remote keyless entry system
- Speed control with tilt steering wheel\*
- Power sail-mounted side mirrors\*
- Trailer towing package

\* Option included in a Preferred Equipment Package

Top - For 1997 Club Wagon sports a new grille and front bumper

Left - Club Wagon shown in Medium Wedgewood Blue Clearcoat Metallic with Silver Clearcoat Metallic accent.

Below - The newly-designed instrumentation panel

### Dimensions

	Regular Club Wagon mm (in.)	Super Club Wagon mm (in.)
Wheelbase	3505 (138.0)	3505 (138.0)
Length	5382 (211.9)	5890 (231.9)
Height	2054 (80.9)	2136 (84.1)
Width	2014 (79.3)	2014 (79.3)
Seating Capacity	8/12	15

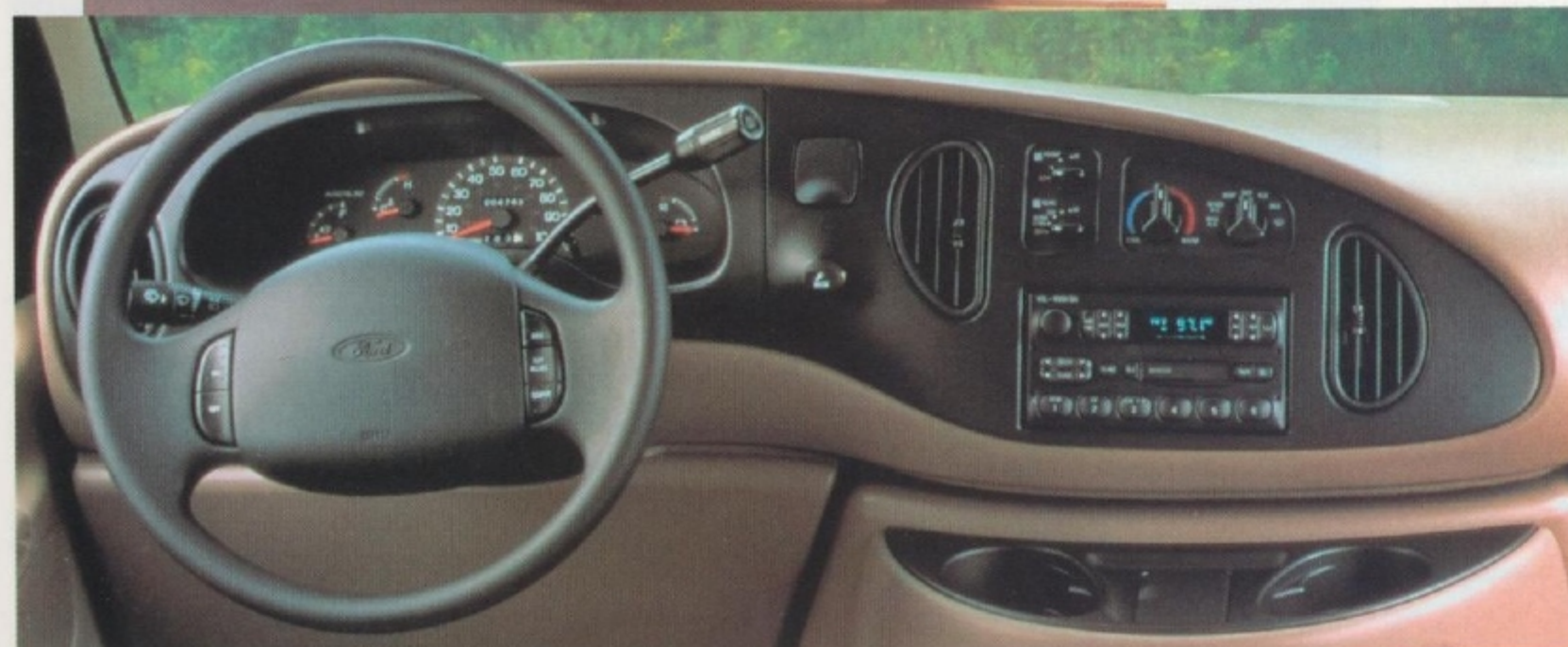
### Preferred Equipment Packages

We've grouped several of Club Wagon's most appealing options into Preferred Equipment Packages which yield price reductions over ordering these options individually. Additional packages are available. See your Dealer for details.

Model	XL Plus	XLT
Package #	701A	705A

Air conditioning	•	s
Deluxe upgrade package	•	
Wheel covers	•	s
Deluxe engine cover console	•	
Privacy glass	•	
Power sail-mounted mirrors	•	
Electronic AM/FM stereo with cassette and 6 speakers	•	
Tilt steering wheel and speed control	•	

s = Standard  
\*MMVA reporting



## Additional Programs and Services

Hit the road and rediscover Canada with Ford!

CALL 1-888-237-4111 for your free vacation guide



Ford Credit is a full service company that makes a wide variety of financing and leasing programs available to every qualified buyer. Offices are located across Canada. Ask your Ford of Canada Dealer for details.

### THE PLAN

Drive New Every Two!

The 24-month PLAN is our popular vehicle leasing alternative.

The PLAN gives you the flexibility to enjoy a new vehicle every two years, and then gives you the option of keeping it, trading it or walking away at the end of the lease term.

Find out more about The PLAN at your nearest Ford of Canada Dealer.



### CIBC Ford VISA Cards

Your Key To Saving. Use CIBC Ford VISA and save up to \$700 each year, to a total of \$3,500, or use CIBC Ford Gold VISA and save up to \$1,400 each year, to a total of \$7,000, towards the purchase or lease of any new Ford of Canada vehicle.

You'll earn a 5% rebate from everyday purchases and an additional 5% when using your CIBC Ford VISA or CIBC Ford Gold VISA Cards for purchases from CIBC Ford Partners. For full details, call 1-800-465-CIBC (2422) or visit your local Ford of Canada dealership or CIBC branch office.

### \$750 - Graduate Program

**\$750 CASH BACK.** Recent graduates (graduating between May 1, 1994 and December 31, 1997) from a **recognized** post-secondary program may qualify for Canada's most established Graduate Rebate Program. They can get \$750 cash back, **over and above** most other consumer retail offers advertised at the time of purchase or lease. Get all the details from your local Ford or Mercury Dealer, or in your **Graduate Program Information Kit**. It's free! Just call our toll-free hotline at **1-800-387-5535**.



Ford Motor Company of Canada, Limited

### For More Information

#### Customer Information Hotline 1-800-561-FORD

Should you require any additional general or program information or individual vehicle brochures, call our toll-free Customer Information Hotline for prompt, courteous assistance.

### Internet Access

Ford of Canada can now be found on the Internet. You can access the site directly at .....

...www.ford.ca

The site features several pages, including:

- **Auto Row** - a virtual showroom for every Ford, Mercury and Lincoln vehicle line
- **The Dealer Locator** - you can locate Dealers either by Dealer name or by your postal code
- **The Environment** - learn the details of Ford of Canada's commitment to the preservation of the environment with items such as 'tips on how to drive green' and automatic recycling

### Ask Your Dealer

Following the publication of this catalogue, certain changes in standard equipment, options, prices or product delays may have occurred which would not be included in these pages. Ford Motor Company of Canada, Limited, reserves the right to make these changes without incurring obligations of any kind. Your Dealer is your best source of up-to-date information.





**ANYONE WHO SAYS IT'S A SMALL WORLD  
HASN'T DONE MUCH DRIVING IN CANADA.**

Anyone will tell you it's the roads that connect this country. And the roads that connect the people.

Since 1904, Ford of Canada has put cars and trucks on those roads. And in that time, our commitment to developing new technologies has resulted

in world-class automobiles, built right here at home. In fact, in the last two years we've introduced

10 new vehicles. And since 1992, we've invested more than 4 billion dollars in this country—more than any other automobile manufacturer.

So no matter where you're headed you can count on this:

after 92 years, Ford and Canada are still on the same roads, heading in the right direction.



*Ford Motor Company of Canada, Limited*

**1-800-561-FORD**