

*the nineteen hundred and ninety eight*  
**ESCORT**



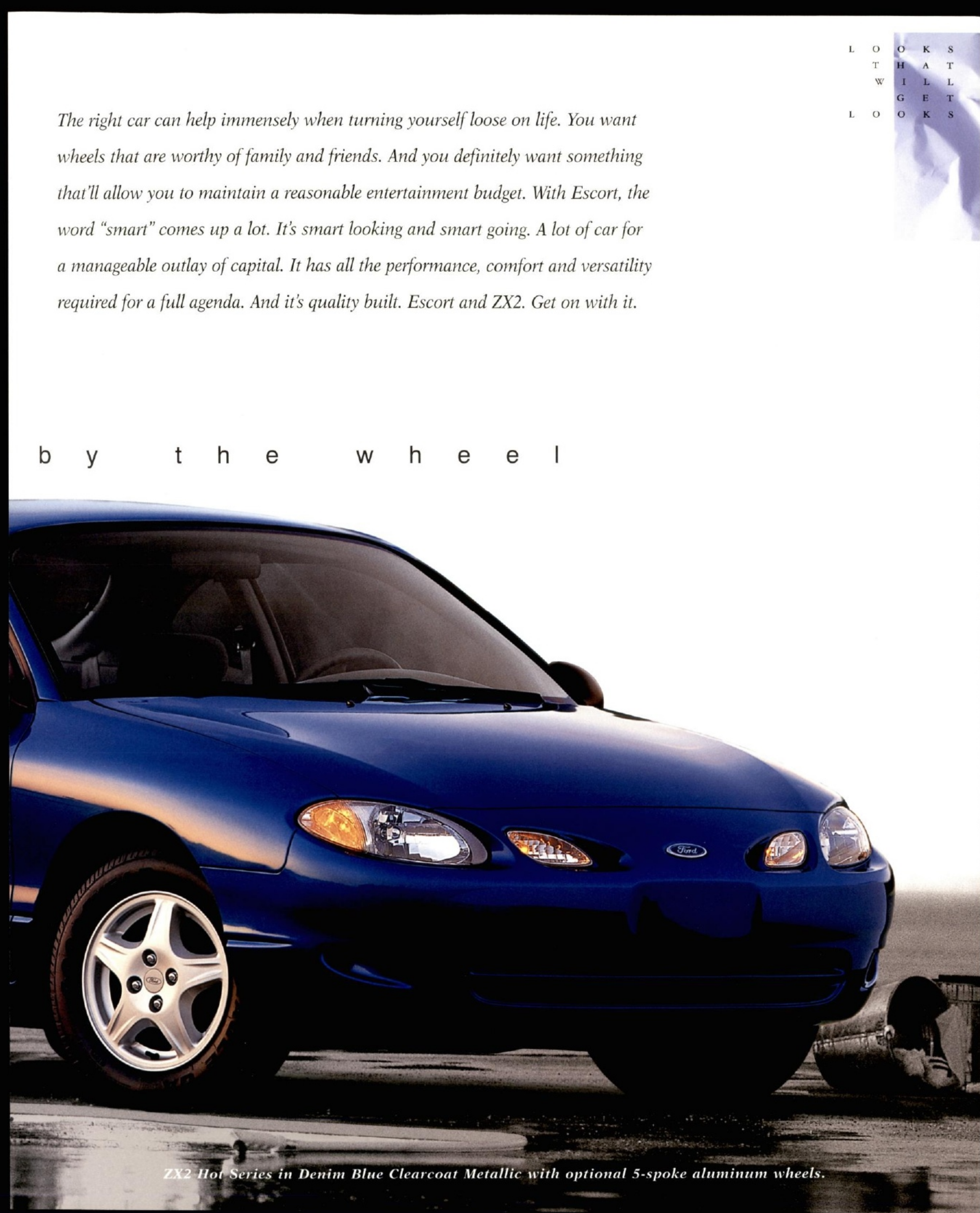


L O O K S  
T H A T  
W I L L  
G E T  
L O O K S

*The right car can help immensely when turning yourself loose on life. You want wheels that are worthy of family and friends. And you definitely want something that'll allow you to maintain a reasonable entertainment budget. With Escort, the word "smart" comes up a lot. It's smart looking and smart going. A lot of car for a manageable outlay of capital. It has all the performance, comfort and versatility required for a full agenda. And it's quality built. Escort and ZX2. Get on with it.*

g r a b l i f e

b y t h e w h e e l



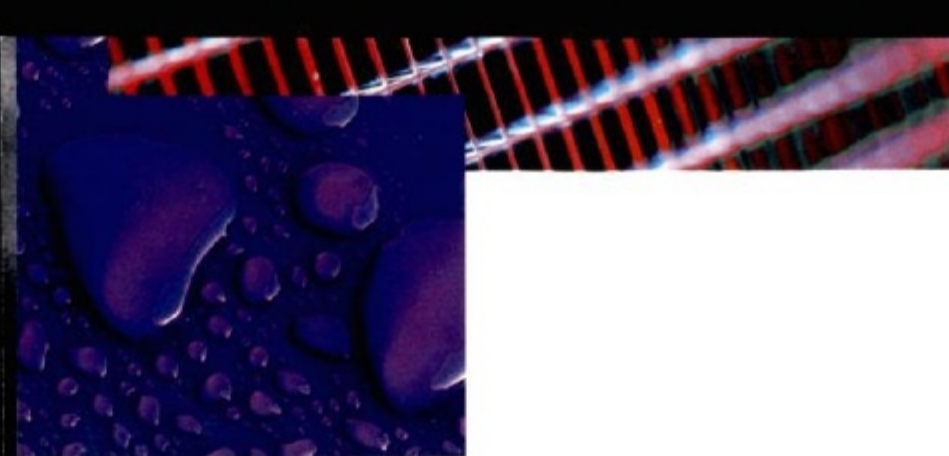
*ZX2 Hot Series in Denim Blue Clearcoat Metallic with optional 5-spoke aluminum wheels.*





a n d a t t i t u d e

ZX2 Hot Series in Bright Red Clearcoat with the optional Sport Group.  
Top left: ZX2 Hot Series in Pacific Green Clearcoat Metallic with the optional Appearance Group.



With its 130-horsepower Zetec engine, ZX2 is one fun-to-drive automobile. It takes a confident, charismatic stand against all of life's routines, rigors and ruts. Day in, night out, ZX2 delivers the definitive answer to an important age-old question: Is this any way to have fun?



c o m e s i n b o t a n d c o o l s e r i e s

G E T T I N G T H I N G S R O L L I N G



s p o r t

a g r e a t l o o k

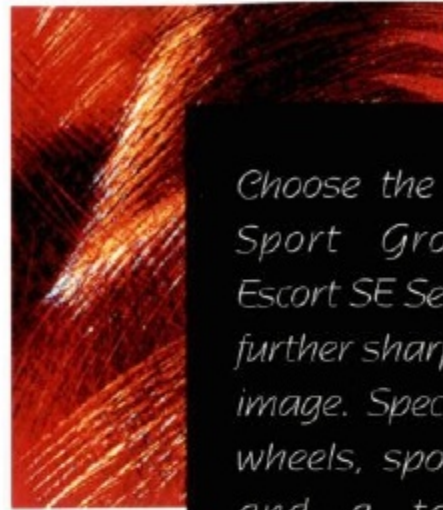


# S E S p o r t Sedan

f o r a s p o r t y f e a s t  
t h e e y e s



A S P O R T I N G P R O P O S I T I O N



Choose the optional Sport Group for Escort SE Sedan and further sharpen your image. Special sport wheels, sport seats and a tastefully styled rear spoiler are some of the appearance items it includes. The look is a reflection of your enthusiasm for the enjoyment of driving.



*Escort SE in Silver Frost Clearcoat Metallic with the optional Sport Group.*



Escort LX in Pacific Green Clearcoat Metallic.

a n i n t e l l i g e n t c h o i c e

e s c o r t L X

F U L L Y E X P E C T T H E U N E X P E C T E D



Escort LX Sedan. For features, style and fun, it's more than you might expect in a car its size. For example, even though it's small, Escort is big on entertainment, with a standard stereo system that includes premium speakers. It's big on value, too, making items like a remote keyless entry system and air conditioning available without your having to actually win the lottery to get them.

C O N V E N I E N C E A N D I N N O V A T I O N

S e d a n

g r a b l i f e b y t h e w h e e l





R O O M  
F O R A L L  
O F Y O U R  
T H I N G S

Way back when, wagons came about to provide their owners a little more utility than sedans could with more room to tote things and more ways to get those things inside. This is still what wagons do, but along the way they've gotten a lot more comfortable and much better looking. Escort is a perfect example of the contemporary wagon. Besides sharing the performance, convenience and comfort of the sedan, it offers a full 63.4 cubic feet of cargo area with the rear seat backs folded down. It's versatile: The split-fold feature of the rear seat lets you fold both seat backs down to carry cargo, or just one when you have both passengers and cargo to deal with. Escort Wagon. Mission cheerfully accomplished.

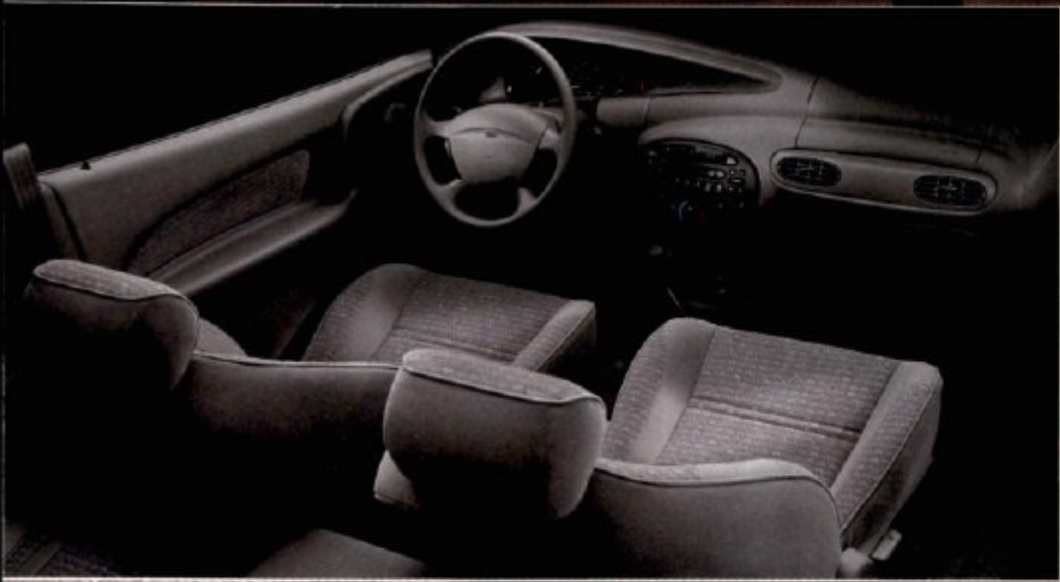


y o u r l i f e

# Wagon

Escort SE Wagon in Black Satin Clearcoat Metallic with the optional Wagon Group.





The Escort interior, shown here with LX trim in Medium Graphite, is designed for comfort as well as comfortably equipped. ZX2 features a driver's seat that remembers how far back to recline. It's shown above with the optional Sport Group.

The integrated control panel (right), standard in all models, is unique in this class of car. It clusters all of the climate and sound system functions into one stylish, convenient location.



c o m f o r t                      a n d                      v e r s a t i l i t y



Left: The convenient 60/40 split/fold rear seat, a standard feature in Escort and ZX2, provides exceptional passenger/cargo versatility.

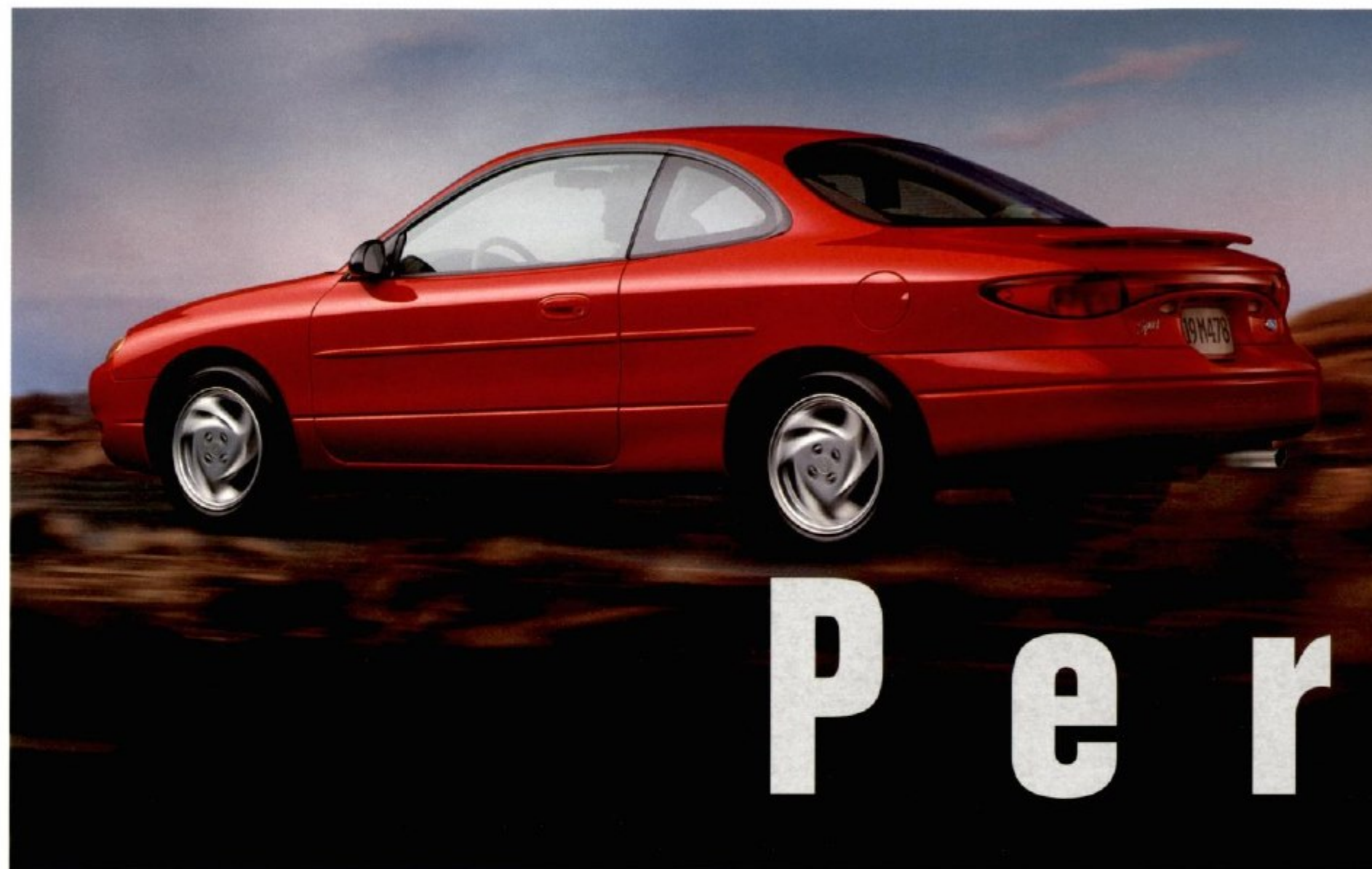


Below left: An auxiliary console, available as a Ford Dealer installed accessory, features a padded armrest and extra storage space for all kinds of articles.

Some equipment shown optional.







Per

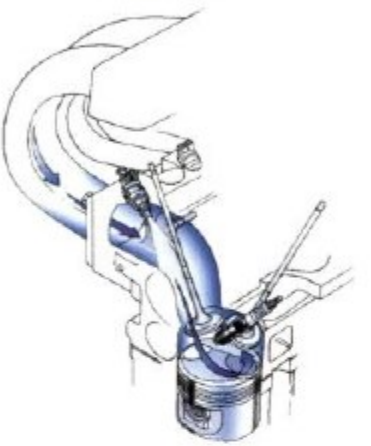
*ZX2 Hot Series in Bright Red Clearcoat with the optional Sport Group.*

1 0 0, 0 0 0 m i l e s  
b e t w e e n t u n e u p s

*\*Under normal driving conditions  
with routine fluid and filter changes.*



*Left: ZX2 16-valve Zetec engine.  
Below: Sedan/Wagon 2.0L engine.*



w h e n i t c o m e s t o d r i v i n g e n j o y m e n t ,  
f o r m a n c e  
I S T H E N A M E O F T H E G A M E

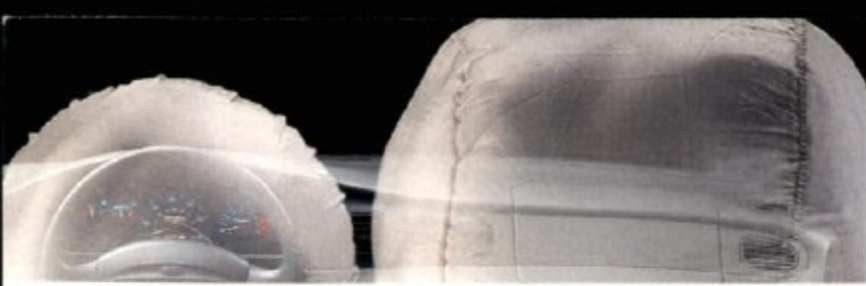
ZX2 generates 130 hp with its 16-valve Zetec engine and quick-opening throttle. The split-port induction system for the standard Escort Sedan and Wagon 2.0L engine boosts it at engine speeds over 3,000 rpm to achieve 110 horses.

Below the 3,000-rpm mark, you get maximized fuel economy (see your Ford Dealer for 1998 EPA mileage estimates).

*The rigid one-piece bodyside contributes to a smooth ride. The power rack-and-pinion steering creates ease of maneuverability. Stabilizer bars are standard. And the advanced-design quadralink independent rear suspension system provides excellent control during acceleration, cornering and braking.*







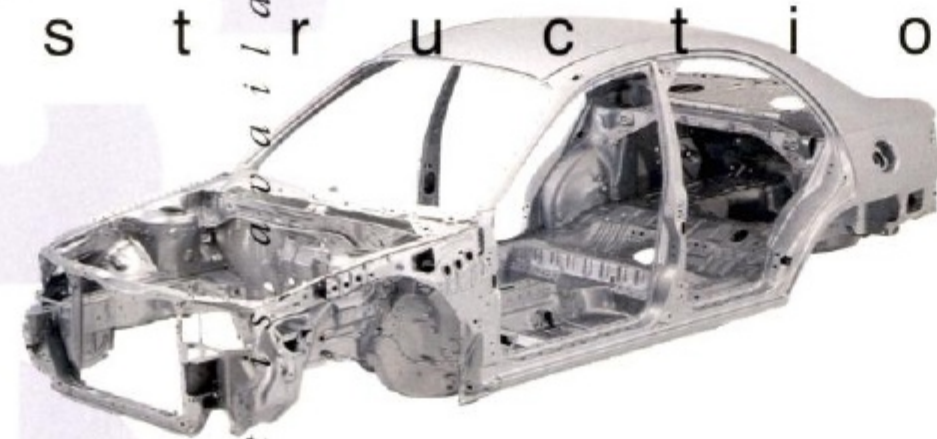
On the road, the more secure you feel, the more you can enjoy the excursion. In Escort, Second Generation depowered air bags, which are designed to further enhance protection for the driver and passenger, are standard (always wear your safety belt and secure children in the rear seat). Safety cell construction includes protective side door intrusion beams. Available anti-lock brakes provide greater steering control while braking under most adverse conditions, even on wet or slippery surfaces. Escort offers available driver's door remote keyless entry, which locks and unlocks the driver's door and trunk/liftgate from a distance. Extra convenience. Extra security, too.

standard childproof rear door locks



A S A F E T R I P H A S

s a f e t y c e l l c o n s t r u c t i o n



available on wagon  
integrated child safety seat



B E E N P L A N N E D F O R .



Escort LX in Silver Frost Clearcoat Metallic.



You can have your new Escort just about any way you want it.  
Choose between LX, which is the standard Escort series, and SE.  
Or choose the sporty ZX2 coupe in "Hot" or "Cool" versions.  
You may add individual options if you wish.

## features and options

In addition to individual options, you may also add  
an option group to Escort SE or ZX2 "Hot."  
See your dealer for complete ordering information.

### SE COMFORT GROUP (SEDAN & WAGON)

- Speed control
- Tilt steering wheel
- Dual map lights
- Dual visor mirrors

### SE SPORT GROUP (SEDAN)

- Rear spoiler
- Tachometer
- Bright exhaust tip
- Special sport seats with rear head restraints
- 14" aluminum wheels
- Unique sport badging

### SE APPEARANCE GROUP (SEDAN & WAGON)

- Bright exhaust tip (not available on wagon)
- Chrome wheel covers with bolt-on appearance
- Leather-wrapped steering wheel

### SE POWER GROUP (SEDAN & WAGON)

- Power windows
- Power locks
- All-door remote entry with anti-theft

### WAGON GROUP

- Luggage rack
- Cargo area cover
- Rear window wiper/washer

### HOT COMFORT GROUP (ZX2)

- Speed control
- Tilt steering wheel
- Dual map lights
- Dual visor mirrors

### HOT SPORT GROUP (ZX2)

- Rear spoiler
- Fog lamps
- Bright exhaust tip
- Special sport seats with rear head restraints
- 15" aluminum wheels
- Unique sport badging

### HOT APPEARANCE GROUP (ZX2)

- Bright exhaust tip
- Chrome wheel covers with bolt-on appearance
- Leather-wrapped steering wheel

### HOT POWER GROUP (ZX2)

- Power windows
- Power locks
- All-door remote entry with anti-theft

	Escort LX	Escort SE	Wagon	ZX2 COOL	ZX2 HOT
EXTERIOR FEATURES					
Aerodynamic fixed-aim headlamps	S	S	S	S	S
Color-keyed bumpers	S	S	S	S	S
Black bodyside protection moldings	S	—	—	S	—
Color-keyed bodyside protection moldings	—	S	S	—	S
Water management windshield molding	S	S	—	S	S
Dual outside manual mirrors	S	—	—	S	—
Dual outside power mirrors	—	S	S	—	S
Lower bodyside and underbody PVC coating	S	S	S	S	S
Rear reflex applique	S	S	—	S	S
Bright exhaust tip	—	G	—	—	G
Rear spoiler	—	G	—	—	G
Fog lamps	—	—	—	—	G
Sport badging	—	G	—	—	G
14" bolt-on wheel covers	S	S	S	S	S
Chrome 14" bolt-on wheel covers	—	G	G	—	G
14" aluminum wheels	—	O	O	—	O
15" aluminum wheels	—	—	—	—	G

### COMFORT/CONVENIENCE FEATURES

Power steering	S	S	S	S	S
CFC-free air conditioning system	O	S	S	O	S
Integrated control panel for climate and sound system	S	S	S	S	S
Tachometer	—	G	—	S	S
Power sliding moonroof	—	—	—	—	O
Soft-feel vinyl door trim with cloth inserts, armrest, front integral map pocket and speaker grille	S	S	S	S	S
Center console with cassette storage, forward cup holders, rear bin/cup holder	S	S	S	S	S
Glove box	S	S	S	S	S
Digital clock	S	S	S	S	S
Passenger-side visor mirror	S	S	S	S	S
Headlamps-on warning chime	S	S	S	S	S
Full 12-ounce carpeting	S	S	S	S	S
Low-liftover trunk/cargo area	S	S	S	S	S
Full trunk trim	S	S	—	S	S
Luxury cargo area trim	—	—	S	—	—
Solar tinted glass	S	S	S	S	S
Side window demisters	S	S	S	S	S
Flow-through 4-speed heater/defroster with rear ducts	S	S	S	S	S
2-speed wipers with variable interval	S	S	S	S	S
Temperature gauge	S	S	S	S	S
Trip odometer	S	S	S	S	S
Low fuel warning light	S	S	S	S	S
Battery saver	S	S	S	S	S
Inside hood release	S	S	S	S	S
Smoker's package	O	O	O	O	O
Driver's door remote entry system w/panic alarm	O	S	S	O	S
All-door remote entry with anti-theft system and power door locks	—	G	G	—	G
Front and rear floor mats	O	O	O	O	O

	Escort LX	Escort SE	Wagon	ZX2 COOL	ZX2 HOT
COMFORT/CONVENIENCE FEATURES (CON'T)					
Automatic transaxle	O	O	O	O	O
Leather-wrapped steering wheel	—	G	G	—	G
Luggage rack	—	—	G	—	—
Cargo area cover	—	—	G	—	—
Rear window wiper/washer	—	—	G	—	—
Dual map lights/dual visor mirrors	—	G	G	—	G
Power windows	—	G	G	—	G
Power locks	—	G	G	—	G
Speed control	—	G	G	—	G
Tilt steering wheel	—	G	G	—	G

### SAFETY FEATURES

Second Generation depowered dual front air bags, driver and passenger, manual 3-point front lap/shoulder belt system with height-adjustable D-ring, lap/shoulder outboard rear safety belts, center rear seat lap belt	S	S	S	S	S
Anti-lock braking system (ABS)	O	O	O	O	O
Integrated child safety seat with full-fold rear seat	—	—	O	—	—
Child safety rear door locks	S	S	S	—	—
Rear window defroster	O	S	S	O	S

### SEATING

Low-back cloth bucket seats with split/fold (60/40) rear seat	S	S	S	S	S
Driver's seat memory recline	—	—	—	S	S
Unique sport seats w/integrated rear head restraints	—	G	—	—	G

### OPTION GROUPS

SE Comfort Group	—	O	O	—	—
SE Sport Group	—	O	—	—	—
SE Appearance Group	—	O	O	—	—
SE Power Group	—	O	O	—	—
Wagon Group	—	—	O	—	—
Hot Comfort Group	—	—	—	—	O
Hot Sport Group	—	—	—	—	O
Hot Appearance Group	—	—	—	—	O
Hot Power Group	—	—	—	—	O

### AUDIO SYSTEMS

Four premium speakers (two standard and two premium with wagon)	S	S	S	S	S
AM/FM stereo	S	S	S	S	S
AM/FM stereo/cassette	O	O	O	O	O
AM/FM stereo/cassette/Premium Sound system with CD changer controls	—	O	—	—	O
AM/FM stereo/cassette/Premium Sound system with 6-disc CD changer	—	O	—	—	O
6-disc CD changer (dealer installed)	O	O	O	O	O

S = Standard O = Optional G = Option Group Only — = Not Available

# Specifications





Dual outside mirrors, electrically powered, are standard with SE and with ZX2 Hot.



The convenience of a tilt wheel is available with the Comfort Option Group.



Your driving enjoyment goes clear through the roof with the optional ZX2 power moonroof.



This handy bike rack system is available from your Ford Dealer in both frame and fork mounts. Ski rack systems are also available. Both are specifically designed for Ford vehicles.



SE sedan and ZX2 Hot offer an optional AM/FM stereo/cassette/Premium Sound system with a 6-disc CD changer.

DIMENSIONS	SEDAN	WAGON	ZX2
Wheelbase	98.4"	98.4"	98.4"
Length	174.7"	172.7"	175.2"
Height	53.3"	53.9"	52.3"
Width	67.0"	67.0"	67.4"
Front tread	56.5"	56.5"	56.5"
Rear tread	56.5"	56.5"	56.5"
Front head room	39.1"	38.7"	38.0"
Rear head room	36.8"	39.1"	35.1"
Front leg room	42.5"	42.5"	42.5"
Rear leg room	34.0"	34.0"	33.4"
Front shoulder room	51.6"	51.6"	50.8"
Rear shoulder room	52.1"	52.1"	48.7"
Trunk or cargo volume (cu. ft.)	12.8	63.4*	11.8
Passenger capacity	5	5	4

\*With rear seat back(s) folded down.

CHASSIS	
Body type	Unitized
Suspension, front	Independent system with gas-pressurized MacPherson struts; stabilizer bar; isolated engine subframe
Suspension, rear	Independent quadralink system; stabilizer bar
Steering	Power rack-and-pinion; 17.0:1 overall ratio
Brakes	4-wheel hydraulic, power front disc/rear drum (anti-lock system optional)
Tires	P185/65R14 BSW
Fuel capacity	12.8 gallons

ENGINE - SEDAN AND WAGON	
Type	2.0L overhead-cam in-line 4-cyl. with on-board diagnostics
Valves	8
Horsepower (SAE net)	110 @ 5,000 rpm
Torque (SAE net lb.-ft.)	125 @ 3,750 rpm
Engine control	EEC-V computer
Induction system	Split-port sequential electronic fuel injection
Spark plugs	Platinum tipped
Scheduled tune-up interval	100,000 miles*

\*Under normal driving conditions with routine fluid and filter changes.

ENGINE - ZX2	
Type	2.0L Zetec dual-overhead-cam, in-line 4-cyl. with on-board diagnostics
Valve system	16 valves with variable camshaft timing (VCT)
Horsepower (SAE net)	130 @ 5,750 rpm
Torque (SAE net lb.-ft.)	127 @ 4,250 rpm
Engine control	EEC-V computer
Induction system	Sequential electronic fuel injection with fast-opening throttle
Spark plugs	Platinum tipped
Scheduled tune-up interval	100,000 miles*

\*Under normal driving conditions with routine fluid and filter changes.

TRANSAXLE	
Type	5-speed manual overdrive 4-speed automatic overdrive available

ESCORT SEDAN and WAGON

#### Exterior Paint Colors

Escort Sedan and Wagon  
Mocha Frost Clearcoat Metallic  
Bright Red Clearcoat  
Toreador Red Clearcoat Metallic  
Atlantic Blue Clearcoat Metallic  
Aquamarine Frost Clearcoat Metallic  
Pacific Green Clearcoat Metallic  
Silver Frost Clearcoat Metallic  
Pewter Grey Clearcoat Metallic  
Black Satin Clearcoat Metallic  
Vibrant White Clearcoat

#### Interior Trim Colors

Medium Graphite	Willow Green	Medium Prairie Tan

E s c o r t



Full luxury wheel cover with "bolt-on" appearance (standard)

Optional chrome-plated wheel cover with "bolt-on" appearance (included with Appearance Group)

Optional spoke swirl aluminum wheel (included with Sport Group)

c o l o r s & w h e e l s

Z X 2



Full sport wheel cover with "bolt-on" appearance (standard)

Optional chrome-plated wheel cover with "bolt-on" appearance (included with Appearance Group)

Optional 5-spoke aluminum wheel (available on Hot Series)

Optional 15" aluminum sport wheel (included with Sport Group)

ROADSIDE ASSISTANCE PROGRAM  
Every new Ford includes the assurance of a 24-hour emergency Roadside Assistance Program provided during the 3-year/36,000-mile bumper-to-bumper warranty. Ask your Ford Dealer for complete details on this program and for a copy of the limited warranty.

PRODUCT CHANGES  
Following publication of the catalog, certain changes in standard equipment or options, or product delays, may have occurred which would not be included in these pages. Ford reserves the right to change product specifications at any time without incurring obligations.



ZX2

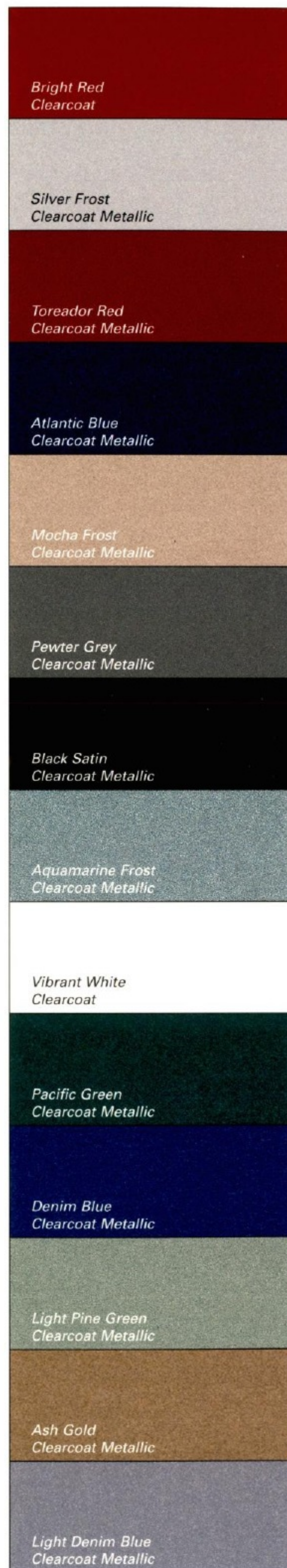
#### Exterior Paint Colors

ZX2  
Ash Gold Clearcoat Metallic  
Light Pine Green Clearcoat Metallic  
Bright Red Clearcoat  
Toreador Red Clearcoat Metallic  
Light Denim Blue Clearcoat Metallic  
Denim Blue Clearcoat Metallic  
Pacific Green Clearcoat Metallic  
Silver Frost Clearcoat Metallic  
Black Satin Clearcoat Metallic  
Vibrant White Clearcoat

#### Interior Trim Colors

Medium Graphite*	Slate Blue	Medium Prairie Tan

\*Cool Series available in Medium Graphite interior only.







# 1998 ESCORT

