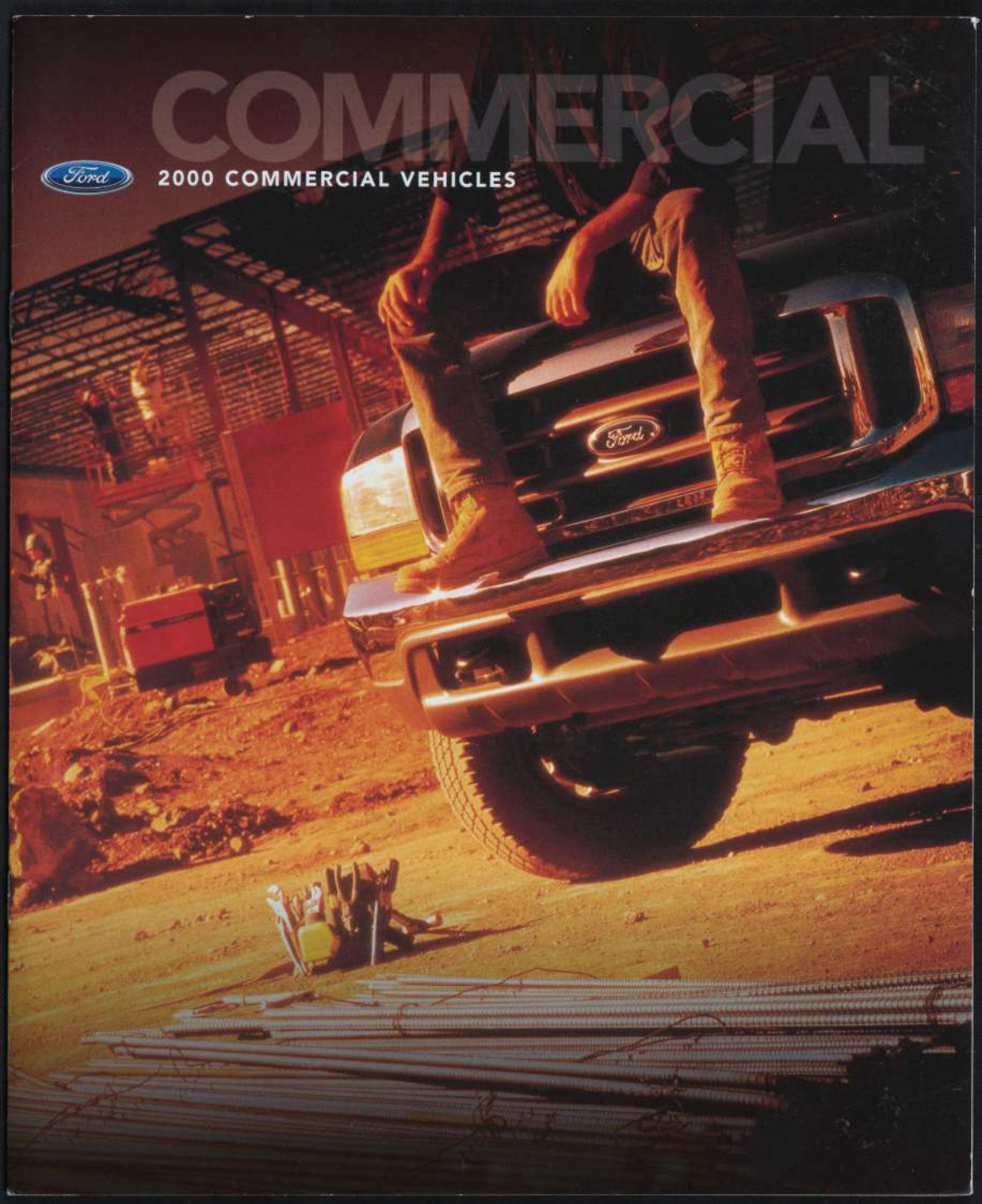


COMMERCIAL



2000 COMMERCIAL VEHICLES



A couple of years ago, F-Series marked its 50th anniversary. And although half a century is a good long time, Ford trucks actually go back even further.

In 1917, in the midst of the phenomenal run of the Model T, Henry Ford began producing affordable, quality trucks and tractors. He was convinced they could benefit farmers and businessmen every bit as much as his cars were benefiting motorists.

Fast forward to 2000. Ford work vehicles have hauled the dirt, pulled the stumps, pushed the snow, carried the cargo and delivered the goods to the doorstep of a new millennium.

Over the decades, we've learned *bolt by bolt* how to build trucks and vans that get the work done. And today, we offer the most versatile and complete line of trucks in the marketplace.



The right truck for the job



F-150 pickups are available as Flareside or Styleside in either Regular Cab or SuperCab bodystyles. GVWRs range from 5,600 lbs. to 7,700 lbs. 4x2 or 4x4.



Super Duty F-250 and F-350 pickups are available in Regular Cab, SuperCab and Crew Cab configurations. GVWRs start at 8,800 lbs. and go up to 11,200 lbs. 4x2 or 4x4.



Super Duty F-250 and F-350 Chassis Cabs offer Regular Cab, SuperCab and Crew Cab configurations as well. GVWRs go up to 12,500 lbs. 4x2 or 4x4.



Super Duty F-450 and F-550 Chassis Cabs span a GVWR range from 15,000 lbs. to 19,000 lbs. Regular Cab and Crew Cab styles are available. 4x2 or 4x4.



Regular Cab, SuperCab and Crew Cab choices extend to the big Super Duty F-650 and F-750. F-650 has a GVWR of 26,000 lbs. F-750 is available with GVWRs of 30,000 and 33,000 lbs.



E-Series Wagon, in E-150, E-350 Super Duty and E-350 Super Duty Extended versions, features versatile seating with solid engineering and performance. Maximum towing is 10,000 lbs.



E-Series Van, in E-150, E-250, E-350 Super Duty series and E-350 Super Duty Extended versions, is available with a 9,500-lb. maximum GVWR. And there are up to 309 cubic feet of cargo area (Extended Van).



E-Series Cutaways provide the basis for all kinds of commercial and recreational vehicle bodies, including over 89% of all ambulances and Class C motor homes sold.



Excursion's design, based on the Super Duty F-Series platform, accounts for its toughness and big-sized performance. A great all-purpose work vehicle.



Windstar Van is a practical, capable performer with standard four-wheel anti-lock brakes and a maximum cargo volume of 145.0 cubic feet behind the front seats.

F-150

Load it up. Ford F-150 thrives on the tough stuff. This XLT SuperCab model is shown in Oxford White Clearcoat.

F-Series meets the needs of demanding truckers, plain and simple. F-Series has been the best-selling truck in America for 22 years, with more

In 1959, the first F-Series 4x4 was introduced. It forever changed the way America looks at trucks.

repeat buyers than any other full-size pickup* —and it's the world's best seller. Ruggedness, quality, style and reputation are some of the reasons.

No one builds a better full-size pickup than Ford F-Series.**

But it really boils down to one thing: F-150 is the best pickup truck to have when the work gets tough. A Regular Cab 4x2 with the Triton™ 5.4L V8 engine tows trailers up to 8,500 lbs., which no competitor under 7,000 lbs. GVWR can match.† And with the most four-door SuperCabs, the F-Series line-up offers convenience no competitor can match.

*Based on a 1998 Ford New Vehicle Customer Survey. **Based on an average of consumer-reported problems at 3 months of ownership in a survey of Ford F-Series models under 8,500 lbs. GVWR and competitive models. †Properly equipped.



F-150 is big on cargo. When equipped with the 7700 Payload Group, a Regular Cab 4x2 can haul up to a hefty 3,220 pounds.



The F-150 Lariat SuperCab interior with leather-trimmed 40/60 front split bench in Medium Graphite.



From the F-150 pickup all the way up to the big Super Duty F-750, F-Series trucks are built for the tough jobs.

SUPER DUTY F-250/350 PICKUPS & CHASSIS CABS



Super Duty F-250 Regular Cab XLT.

Super Duty F-Series trucks begin with the F-250, the logical first step into the over-8,500-pound-GVWR world.

Right across the line, Super Duty trucks have best-in-class roominess.

The Super Duty F-350 offers 12 pickup configurations to tailor the truck to the task. (Narrow-frame chassis cabs are also available in the F-350 series; pickup box delete is available with both series.) Both also

Super Duty offers the largest diesel engine in its class and 500 lbs.-ft. of torque.

offer three cab styles to better fit people/cargo requirements: Regular

Cab, SuperCab or Crew Cab. And there's plenty of tough capability throughout. Super Duty F-350 Regular Chassis Cab 4x2s with dual rear wheels can handle payloads as high as 6,620 pounds. Super Duty is the answer to, "What gives me the most choice?"

Pretty much wherever you look, you'll find jobs being handled by Super Duty F-Series. This F-350 Regular Chassis Cab dual-rear-wheel XLT is shown with an aftermarket service/utility body in Oxford White Clearcoat.



An electronic "shift-on-the-fly" system is available with 4x4s.



Lariat SuperCab interior with optional leather-trimmed front captain's chairs/console in Medium Parchment.



Available telescoping trailer tow mirrors (standard on chassis cabs) extend from the body for a better view. (Late availability.)

SUPER DUTY F-450/550 CHASSIS CABS

Shown in familiar surroundings are the Super Duty F-450 with dump body and the Super Duty F-550 with stake/platform body.



Super Duty F-450 Crew Cab XL.

Dual-rear-wheel Super Duty F-450/550 models cover the 15,000- to 19,000-pound GVWR range, where there's a lot of demanding duty. The Super Duty chassis combines

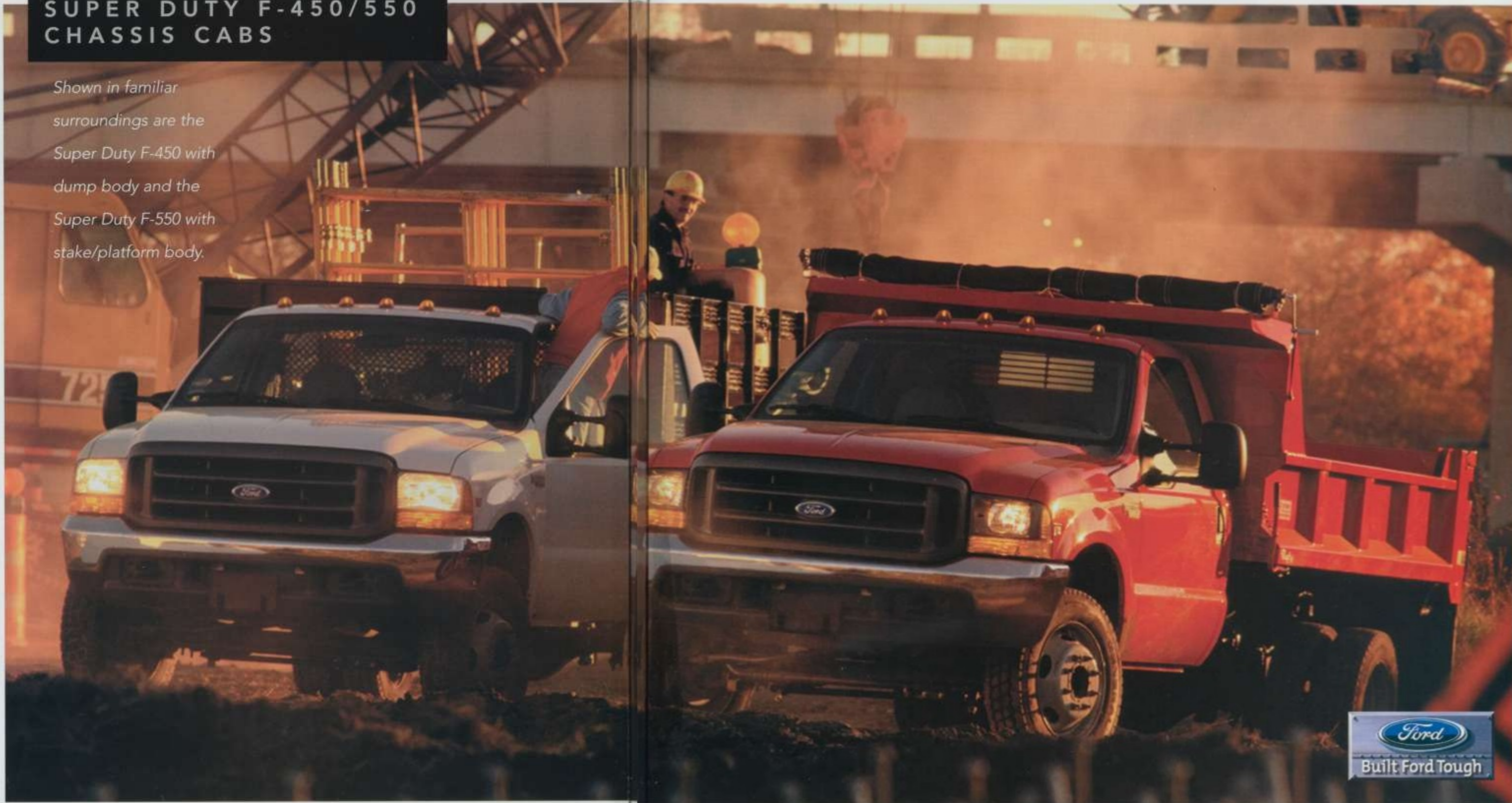
Over 500,000 Super Duty F-Series were produced in the 1999 model year.

innovative features with tough, proven construction to create the perfect platform for heavy-duty use. Body mounts and cab brackets are welded (instead of riveted) for strength.

Special two-piece frame rails accept a new front section as a replacement module for easier servicing. And F-350/450/550 narrow frame chassis cabs were designed with easy upfitting in mind.



The chassis cab through-the-frame-rail fuel filler neck makes upfitting easier.



Replaceable front module makes the frame easier to service.

Wide front and rear tracks provide stability.



Chassis Cabs' straight frame rails easily accommodate aftermarket bodies.

Power four-wheel disc brakes are standard.

Super Duty F-450 Crew Chassis Cab.

SUPER DUTY F-650/750

Construction. Sand, gravel or topsoil. Lawn and garden. Retail delivery. Regardless of the job you have to do, Super Duty F-Series will make it easier. F-750 is shown here in Bright Red with a dump body.

Three cab configurations, three tough diesels, three GVWRs and a rugged straight frame design are the task-

Introduced in 1999, the Super Duty F-650/750 extend F-Series' capability to a maximum of 33,000 pounds GVWR.

oriented attributes of the big Super Duty F-650/750 series.

They make it easy to match the truck to the job. With a roomy, comfortable cab and the

Super Duty F-650/750 offer the only four-door SuperCab in Class 6 and 7 (conventional cabs).

kind of ride and handling performance that will pleasantly surprise Class 6 and 7 operators,

these workhorses can really help shorten long days. And Super Duty F-650/750 trucks with Power Stroke® engines can be sold and serviced at any Ford Dealer with "Power Stroke" certification, more than 4,000 nationwide.



Super Duty F-650/750 XLT Crew Cab interior in Medium Graphite.



Super Duty F-650/750 Regular Cab with van body.



Super Duty F-650/750 SuperCab with stake body.



Super Duty F-650/750 Crew Cab with van body.

E-SERIES

E-Series has been part of working America for nearly 40 years. From the E-150 Van to the E-450 Super Duty Cutaway Chassis, it's the tough, versatile van of choice.



Versatile Ford Econoline has been a commercial pillar for decades.

Econoline E-Series has been the best-selling full-size van in America since 1979. That's because it gets the job done. When you're into your 12th hour on an 8-hour shift, there's nothing like an E-Series

More than five million Econoline wagons and vans have been built since 1970.

Super Duty Van or Cutaway. Construction work, heavy delivery – Super Duty gets you through with power and room to spare. All commercial vans can be equipped with the Racks and Bins System or the EconoCargo System, which offers protection for the inside and help in organizing cargo. And with its ability to handle both cargo and up to 5 people, the new Crew Van adds yet more versatility to the jack-of-all-trades E-Series line.



The new Crew Van seats five passengers and features a bulkhead partition to separate crew and cargo sections. (Late availability.)



The Racks and Bins System is installed in 22% of E-Series commercial-use van models.



EconoCargo makes efficient use of work/cargo space.

E-SERIES



Wherever there are people who need to get where they're going dependably and in comfort, Ford E-Series provides a variety of commercial transportation solutions. Econoline Wagon, available with seating configurations that accommodate from seven to fifteen passengers, makes an ideal shuttle bus for airports, hotels, churches – you name it. For heavy-duty applications, E-Series Super Duty

Cutaway Chassis provides a tough foundation for transporter buses, ambulances and a wide variety of shuttling needs. Known for a Econoline has been the best-selling full-size van for 20 years. smooth ride, all E-Series models feature four-wheel anti-lock brakes, which help provide straighter stopping capability and greater steering control while braking under most conditions, even on wet or slippery surfaces.



The E-450 Super Duty Cutaway, outfitted for ambulance use, is a mainstay in the emergency response field.



Econoline Wagon can seat up to 15 (12-passenger configuration shown).



E-Series Super Duty Cutaway Chassis makes an excellent transporter bus.

COMMERCIAL LENDING

Making quality vehicles is one of the ways we help companies get the job done, but there are more. Through our financing arm, Ford Credit, we make your business our business with solid, successful programs.

Leasing programs like CommercialLeaseSM and CommercialLeasePlusSM are responses to your need for flexible vehicle financing. They offer competitive rates, a variety of package options and simplified billing.

Along more traditional financing lines, our commercial purchase plans offer attractive rates, negotiable terms and options like the seasonal purchase plan, which lets you schedule payments to match your cash flow. Ford Credit's staff of highly trained commercial lending professionals will be happy to show you all the financial options open to you.

Contact us at the locations shown below, or at 1-800-706-0997. You may also visit us at our website, www.fordcredit.com. Or simply consult your local Ford Dealer for Ford Credit Commercial Lending Services info.



Commercial Lending Services' locations: Atlanta (1-800-777-3392);
Charlotte (1-800-529-1617); Chicago (1-800-777-3407);
Dallas (1-800-777-3429); Detroit (1-800-777-3971);
Orange, CA (1-800-272-3451); Philadelphia (1-800-777-3023);
San Francisco (1-800-777-3493).

ENGINES

From the spunky 4.2L V6 right up through the big diesels, Ford work vehicles really put the muscle on tough tasks. Rugged 4.6L V8, 5.4L V8 and 6.8L



5.4L and 6.8L Triton engines have forged steel cranks.

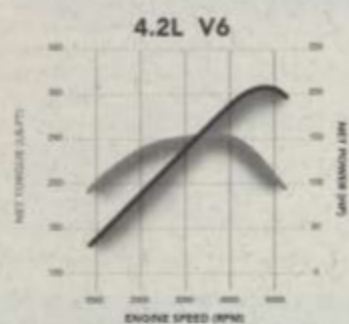
V10 SOHC Triton™ gasoline engines apply their power where you need it most, delivering 90% of their torque at or below 2,000 rpm. The maintenance-free, silent chain drive design eliminates push rods and allows flexibility for improved hp and torque.



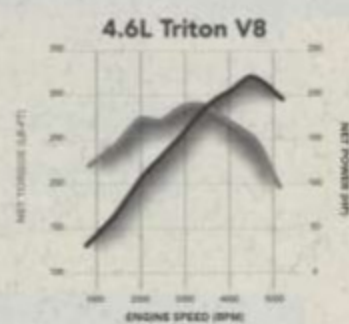
Each Triton engine features exclusive single overhead-cam design.

But the heart of the Ford engine lineup is the diesels. The available 7.3L Power Stroke®* is the largest diesel in its class (Super Duty F-250/550 only) and has 500 lbs.-ft. of torque. Also available in the F-650 and F-750 series are the Cummins® 5.9L ISB and the Caterpillar® 3126B diesels. Their wide range of power ratings makes it easier to choose the right level of performance for the job.

*Also available with F-650/750.



4.2L V6 (standard with F-150 and E-Series).



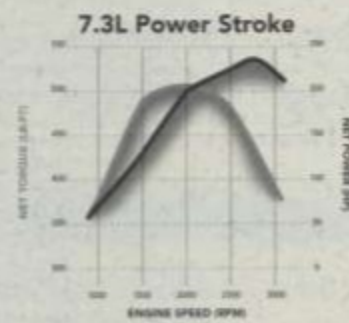
4.6L Triton V8 (available with F-150 and E-Series).



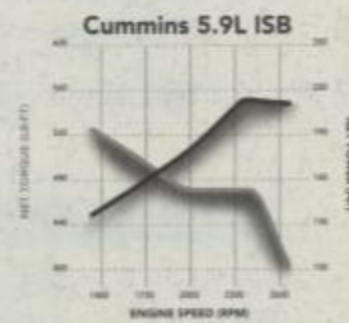
5.4L Triton V8 (available with F-150, Super Duty F-Series, E-Series, and Excursion; natural gas or propane versions also available).



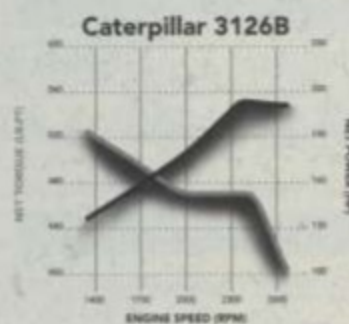
6.8L Triton V10 (available with Super Duty F-Series, E-Series, and Excursion).



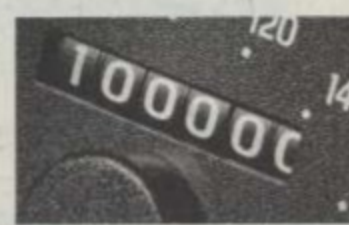
7.3L Power Stroke V8 turbo diesel (available with Super Duty F-Series, E-Series, and Excursion).



Cummins 5.9L ISB diesel (standard with Super Duty F-650/750 with 30,000-lb. GVWR).



Caterpillar 3126B diesel (standard with Super Duty F-750 with 33,000-lb. GVWR).



Every Ford gasoline engine can go 100,000 miles without a first scheduled tune-up* and has a fail-safe cooling system to help protect it.

*Under normal driving conditions with routine fluid and filter changes.

PICKUP AND CHASSIS CAB CONFIGURATIONS

F-150	REGULAR CAB		SUPERCAB							
	STYLESIDE	FLARESIDE	STYLESIDE	FLARESIDE						
SRW										
4X2										
4X4										
SUPER DUTY										
F-250	PICKUP			PICKUP BOX DELETE*						
	REGULAR CAB	SUPER CAB	CREW CAB	REGULAR CAB	SUPER CAB	CREW CAB				
SRW										
4X2										
4X4										
*Available with 8-foot pickup box models.										
F-350	PICKUP			PICKUP BOX DELETE*/CHASSIS CAB						
	REGULAR CAB	SUPER CAB	CREW CAB	REGULAR CAB	SUPER CAB	CREW CAB				
SRW										
4X2										
4X4										
DRW										
4X2										
4X4										
*A pickup box delete option is available with F-350 DRW models equipped with 8-ft. box.										
F-450	CHASSIS CAB		F-550		CHASSIS CAB					
	REGULAR CAB	CREW CAB	REGULAR CAB	CREW CAB	REGULAR CAB	CREW CAB				
DRW										
4X2										
4X4										
F-650	CHASSIS CAB			F-750			CHASSIS CAB			
	REGULAR CAB	SUPER CAB	CREW CAB	REGULAR CAB	SUPER CAB	CREW CAB	REGULAR CAB	SUPER CAB	CREW CAB	
DRW										
4X2										
E-SERIES	STRIPPED CHASSIS				E-SERIES			CUTAWAY		
	E-250 SRW	E-350 SRW	E-350 DRW	E-450 DRW	E-350 SRW	E-350 DRW	E-450 DRW	E-350 SRW	E-350 DRW	E-450 DRW

SRW = Single Rear Wheel DRW = Dual Rear Wheel

F-150 Color and Trim

Exterior Paint Colors*	Dark Denim Blue	Medium Graphite	Medium Parchment	Dark Graphite
Oxford White Clearcoat	•	•	•	•
Silver Clearcoat Metallic	•	•	•	•
Deep Wedgewood Blue Clearcoat Metallic	•	•	•	•
Harvest Gold Clearcoat Metallic	•	•	•	•
Bright Red Clearcoat	•	•	•	•
Chestnut Clearcoat Metallic	•	•	•	•
Toreador Red Clearcoat Metallic	•	•	•	•
Island Blue Clearcoat Metallic	•	•	•	•
Amazon Green Clearcoat Metallic	•	•	•	•
Black Clearcoat	•	•	•	•

*See your dealer for available color and trim combinations.

F-150 Features and Options

Exterior Features	Work Series	XL	XLT	Lariat
Front bumper				
Argent painted	S	-	-	-
Chrome	-	S	S	S
Rear step bumper				
Argent painted	S	-	-	-
Chrome	-	S	S	S
Mirrors				
Black, manual	S	S	-	-
Chrome, power (4x2)	-	-	S	-
Color-keyed, power (4x4)	-	-	S	-
Color-keyed, power signal	-	-	-	S
Moldings				
Color-keyed bodyside (Styleside only)	-	-	S	S
Black wheel openings (4x4)	S	-	-	-
Argent wheel openings (4x4)	-	S	-	-
Color-keyed wheel openings (XLT 4x4; Lariat 4x2/4x4)	-	-	S	S
Wheels (F-150)				
Argent painted (5) with argent hub (4)	S	-	-	-
Argent styled (5) with chrome hub (4)	-	S	-	-
Polished aluminum with chrome hub (4)	-	-	O	S
Cast aluminum with chrome hub (4)	-	-	-	O
Chromed steel with chrome hub (4)	-	-	-	S
Wheels 7700 Payload Group				
Argent painted styled (5) with argent hub (4)	S	-	-	-
Argent painted styled (5) with chrome hub (4)	-	S	-	-
Chrome styled steel with chrome hub (4)	-	-	O	S
Two-tone paint, lower	-	-	O	O
Four doors (SuperCab)	S	S	S	S
Rear quarter windows with flip-out Privacy Glass (SuperCab)	-	-	S	S
Sliding rear window	O	O	O	O
Pickup box features: protective bed rail and tailgate top moldings; horizontal pockets and vertical slots in side panels for special loading; tie-down hooks	S	S	S	S
Removable tailgate with black handle	S	S	S	S
Lockable tailgate	-	O	S	S
Front tow hooks (4x4)	O	O	S	S
Fog lamps (4x4)	-	O	S	S
Cab steps	-	O	O	O
Trailer tow wiring, 4-pin connector	S	S	S	S
Snapless tonneau cover	O	O	O	O
Interior Features				
Door trim				
Integral armrest	S	S	S	S
Map pocket	-	S	S	S
Vinyl upper, curb light	-	-	S	S
Floor trim				
Black vinyl	S	S	-	-
Black vinyl mat (carpet delete)	-	-	O	-
Color-keyed carpet	-	O	S	S
Floor mats, carpeted, color-keyed	-	O	S	S
Grab handles front, A-pillar, driver and passenger sides	S	S	S	S
Air conditioning	O	O	S	S
Speed control/tilt steering wheel	-	O	S	S
6-way power driver's seat/autolamp system	-	-	O	S
Rear storage bin (Regular Cab)	-	-	S	-
Interval wipers (speed-dependent on XLT and Lariat)	S	S	S	S
Powerpoint auxiliary outlet	S	S	S	S
Height-adjustable front shoulder belts	S	S	S	S
Instrument panel cupholder	S	S	S	S
Power windows ("one-touch-down" driver's side) and power door locks	-	-	S	S
Console, overhead, compass, outside air temperature indicator, storage for sunglasses and garage door opener	-	O	S	S

F-150 Features and Options Cont.

Instrumentation	Work Series	XL	XLT	Lariat
Fuel, voltmeter, temperature, oil pressure, speedometer	S	S	S	S
Tachometer	-	-	S	S
Seating Arrangements				
Vinyl bench seat	S	O	-	-
Cloth bench seat	O	S	-	-
40/60 cloth split bench seat with recliners; center armrest with cupholder, storage compartment and driver's manual lumbar adjustment	-	O	S	-
40/60 leather-trimmed split bench seat with recliners; center armrest with cupholder, storage compartment and driver's manual lumbar adjustment	-	-	-	S
Captain's chairs with console and driver's manual lumbar adjustment (cloth XLT, leather-trimmed Lariat)	-	-	O	O
Rear 40/60 flip-up split bench seat (SuperCab)	S	S	S	S
Audio Systems				
AM/FM stereo	S	S	-	-
AM/FM stereo/cassette	-	O	S	-
Premium AM/FM stereo/single CD player/Premium Sound	-	O	O	S
Premium AM/FM stereo/cassette/6-disc CD changer	-	-	O	O
Safety and Security Features				
SecuriLock™ Passive Anti-Theft System	S	S	S	S
Second Generation driver and right front passenger airbags*	S	S	S	S
Rear anti-lock braking system	S	S	-	-
4-wheel anti-lock braking system	O	O	S	S
Remote Keyless Entry System	-	-	O	S
*Always wear your safety belt and deactivate the passenger airbag when using a rear-facing child safety seat in Regular Cab and SuperCab models.				
Performance Features				
Electric "shift-on-the-fly" 4x4	-	-	O	O
3.55 limited slip rear axle	O	O	O	O
3.73 limited slip rear axle*	O	O	O	O
Engine block heater (800-watt and includes heavy-duty battery)	O	O	O	O
Skid plates (transfer case and fuel tank) (4x4)	O	O	O	O
Optional bi-fuel tank configuration (propane or natural gas only)	O	O	O	O
*Only available with 7700 Payload Group.				
Equipment Groups				
4x4 Off-Road Equipment Group: P265/70R17SL OWL all-terrain tires* with 17" cast aluminum wheels (4); skid plates (fuel tank, transfer case and frame front crossmember); HD shock absorbers; 3.55 rear axle ratio; 4x4 Off-Road decal	-	-	O	O
Sport Group	-	O	O	-
Convenience Group: speed control, tilt steering wheel, tailgate lock, overhead console (with compass/outside temperature)	-	O	S	S
Payload Group #2 (V6): maximum GVWR increase to 6,000 with Regular Cab 4x2, 3.55 axle ratio, P255/70R16SL BSW A/S tires, styled steel wheels (4) with Work Series, heavy-duty shock absorbers	O	O	O	-
Payload Group #3 (V8): maximum GVWR increase to 6,600 with Regular Cab 4x2, 4.6L V8 (requires automatic transmission), 3.55 axle ratio, P255/70R16SL BSW A/S tires, styled steel wheels (4) with Work Series, heavy-duty shock absorbers	O	O	O	-
Class III Trailer Towing Group: 7-pin wiring harness connector, frame-mounted hitch receiver, Heavy-Duty Electrical/Cooling Group (required when towing over 4000 lbs.); heavy-duty shock absorbers	O	O	O	O
HD Electrical/Cooling Group: 72 amp-hr. battery; super engine cooling; auxiliary automatic transmission oil cooler (required when towing over 4,000 lbs.)	O	O	O	O
7700 Payload Group (V8): upgrades Styleside 139" wb Regular Cab and SuperCab GVWR to 7700 for increased payloads and towing, includes front GAWR on all 4x4 of 4150 to accommodate snow plow, includes larger front brakes, 4-wheel ABS, higher capacity 7-lug wheels and LT245 tires (4) (A/S 4x2, A/T 4x4), heavy-duty frame, heavy-duty shock absorbers, Heavy-Duty Electrical/Cooling Group, 5.4L V8 engine, automatic transmission	O	O	O	O
*P265 tires are included. Optional LT265 tires are recommended for demanding off-road usage.				
S = Standard O = Optional				

F-150 Styleside Payload Package Selector

	Payload Package	Payload (lbs.)*	GVWR (lbs.)	Avail. Engine(s)	Tires (min.)	
Regular Cab 4x2 120" wb; 6 1/2' box	#1	1,675	5,600	4.2L	P235/70R16SL BSW A/S	
	#1	2,045	6,050	4.6L	P235/70R16SL BSW A/S	
	#1	1,865	6,050	5.4L	P235/70R16SL BSW A/S	
	#2	2,020	6,000	4.2L	P255/70R16SL BSW A/S	
	139" wb; 8' box	#1	1,555	5,600	4.2L	P235/70R16SL BSW A/S
		#1	1,930	6,050	4.6L	P235/70R16SL BSW A/S
#1		1,745	6,050	5.4L	P235/70R16SL BSW A/S	
#2		1,885	6,000	4.2L	P255/70R16SL BSW A/S	
#3		2,365	6,600	4.6L	P255/70R16SL BSW A/S	
#3		3,220	7,700	5.4L	LT245/75R16D OWL A/T**	
Regular Cab 4x4 120" wb; 6 1/2' box	#1	1,700	6,000	4.2L	P235/70R16SL BSW A/S	
	#1	1,870	6,250	4.6L	P235/70R16SL BSW A/S	
	#1	1,735	6,300	5.4L	P235/70R16SL BSW A/S	
	139" wb; 8' box	#1	1,605	6,000	4.2L	P235/70R16SL BSW A/S
		#1	1,775	6,250	4.6L	P235/70R16SL BSW A/S
		#1	1,640	6,300	5.4L	P235/70R16SL BSW A/S
#1		2,880	7,700	5.4L	LT245/75R16D OWL A/T**	
SuperCab 4x2 139" wb; 6 1/2' box		#1	1,795	6,000	4.2L	P235/70R16SL BSW A/S
		#1	1,765	6,050	4.6L	P235/70R16SL BSW A/S
	#1	1,830	6,300	5.4L	P235/70R16SL BSW A/S	
	#1	3,070	7,700	5.4L	LT245/75R16D OWL A/T**	
	157" wb; 8' box	#1	1,615	6,000	4.2L	P235/70R16SL BSW A/S
		#1	1,590	6,050	4.6L	P235/70R16SL BSW A/S
#1		1,855	6,300	5.4L	P235/70R16SL BSW A/S	
SuperCab 4x4 139" wb; 6 1/2' box		#1	1,635	6,250	4.6L	P235/70R16SL BSW A/S
		#1	1,700	6,500	5.4L	P235/70R16SL BSW A/S
		#1	2,725	7,700	5.4L	LT245/75R16D OWL A/T**
	157" wb; 8' box	#1	1,505	6,250	4.6L	P235/70R16SL BSW A/S
		#1	1,525	6,500	5.4L	P235/70R16SL BSW A/S

*Maximum allowable weight of people, cargo and body equipment, and is reduced by the weight of optional equipment. Note: There are weight definitions at the end of the specifications section.

**7700 Payload Group (V8).

F-150 Flareside Payload Package Selector

	Payload Package	Payload (lbs.)*	GVWR (lbs.)	Avail. Engine(s)	Tires (min.)	
Regular Cab 4x2 120" wb; 6 1/2' box	#1	1,650	5,600	4.2L	P235/70R16SL BSW A/S	
	#1	2,020	6,050	4.6L	P235/70R16SL BSW A/S	
	#1	1,850	6,050	5.4L	P235/70R16SL BSW A/S	
	#2	1,995	6,000	4.2L	P255/70R16SL BSW A/S	
	Regular Cab 4x4 120" wb; 6 1/2' box	#1	1,675	6,000	4.2L	P235/70R16SL BSW
		#1	1,845	6,250	4.6L	P235/70R16SL BSW
#1		1,720	6,300	5.4L	P235/70R16SL BSW	
SuperCab 4x2 139" wb; 6 1/2' box		#1	1,770	6,000	4.2L	P235/70R16SL BSW
		#1	1,740	6,050	4.6L	P235/70R16SL BSW
		#1	1,820	6,300	5.4L	P235/70R16SL BSW
	SuperCab 4x4 139" wb; 6 1/2' box	#1	1,610	6,250	4.6L	P235/70R16SL BSW
		#1	1,685	6,500	5.4L	P235/70R16SL BSW

*Maximum allowable weight of people, cargo and body equipment, and is reduced by the weight of optional equipment. Note: There are weight definitions at the end of the specifications section.

F-150 Maximum Trailer Weights (Lbs.)

Automatic	Axle Ratio	GCWR Max.	Regular Cab 4x2	Regular Cab 4x4	SuperCab 4x2	SuperCab 4x4
4.2-liter SEFI V6	3.31	9,000	4,800	-	-	-
	3.55	10,000	5,800	5,400	5,500	-
	3.73	11,000	6,800	6,900	6,600	-
4.6-liter SEFI V8	3.08	10,000	2,000	-	2,000	-
	3.31	10,500	6,200	5,800	5,900	5,600
	3.55	11,500 ⁽¹⁾	7,200	6,800	6,900	6,600
5.4-liter SEFI V8 2V	3.31	12,000	7,500	7,200	7,300	6,900
	3.55	13,000 ⁽¹⁾	8,500	8,200	8,300	7,900
	3.73	12,500 ⁽²⁾	-	7,700	-	7,400
5.4-liter NGV	3.31	13,500	8,800	8,400	8,700	8,300
	3.73	11,000	5,900	-	-	-

F-150 Maximum Trailer Weights (Lbs.) Cont.

Automatic	Axle Ratio	GCWR Max.	Regular Cab 4x2	Regular Cab 4x4	SuperCab 4x2	SuperCab 4x4
4.2-liter SEFI V6	3.08	6,500	2,000	-	2,000	-
	3.31	7,200	-	2,600	-	-
	3.55	7,800	3,600	3,200	3,300	-
4.6-liter SEFI V8	3.08	6,500	2,000	-	1,900	-
	3.31	7,200	2,900	2,500	2,600	2,300
	3.55	7,800	3,500	3,100	3,200	2,900

Note: Maximum trailer weights shown. The combined weight of the towing vehicle (including hitch, passengers and cargo) and the loaded trailer must not exceed the Gross Combination Weight Rating (GCWR).

(1) With 18" tires or 4x2 P275 17" tires. (2) With 4x4 P265 or LT265 17" tires.

F-150 4x2 Features

	Regular Cab	SuperCab
Front suspension	Twin-forged independent short/long arm (SLA) with forged upper and stamped steel control arms	Twin-forged independent short/long arm (SLA) with forged upper and stamped steel lower control arms
Shock absorbers	Gas-pressurized	Gas-pressurized
Stabilizer bar	Front	Front
Steering	Power	Power
Brakes: Work Series, XL	Power with rear anti-lock; 4-wheel anti-lock optional	Power with rear anti-lock; 4-wheel, anti-lock optional
XLT, Lariat	Power with 4-wheel anti-lock	Power with 4-wheel anti-lock
Alternator	115 amp (V6), 110 amp (V8)	115 amp (V6), 110 amp (V8)
Maintenance-free battery with battery-saver	58 amp-hr. (540 CCA) standard	58 amp-hr. (540 CCA) standard
Fuel tank	72 amp-hr. (650 CCA) optional	72 amp-hr. (650 CCA) optional
	25.0 gals. 6 1/2' box	25.0 gals. 6 1/2' box
	30.0 gals. 8' box	30.0 gals. 8' box
Wheels (5)	7.0J 5-hole standard	7.0J 5-hole standard
	7.0J 7-hole optional	7.0J 7-hole optional

F-150 4x4 Features

	Regular Cab	SuperCab
Front suspension	Twin-forged independent short/long arm (SLA) with forged upper and cast-iron lower control arms; solid steel torsion bars	Twin-forged independent short/long arm (SLA) with forged upper and cast-iron lower control arms; solid steel torsion bars
Shock absorbers	Gas-pressurized	Gas-pressurized
Stabilizer bar	Front	Front
Steering	Power	Power
Brakes: Work Series, XL	Power with rear anti-lock; 4-wheel, anti-lock optional	Power with rear anti-lock; 4-wheel, anti-lock optional
XLT, Lariat 4x4 system	Power with 4-wheel anti-lock	Power with 4-wheel anti-lock
Transfer case	Center disconnect, manual shift-on-the-fly; electric shift-on-the-fly system optional	Center disconnect, manual shift-on

F-150 Powertrain Availability by Model

	Regular Cab 4x2			Regular Cab 4x4		
	Work Series	XL	XLT	Work Series	XL	XLT
4.2L V6/5-speed manual OD	S	S	S	S	S	S
4.2L V6/4-speed automatic OD	0	0	0	0	0	0
4.6L V8/5-speed manual OD	0	0	0	0	0	0
4.6L V8/4-speed automatic OD	0	0	0	0	0	0
5.4L V8/4-speed automatic OD	0	0	0	0	0	0
5.4L V8 bi-fuel prep engine/4-speed automatic OD*	0	0	0	0	0	0
5.4L V8 dedicated natural-gas engine/4-speed automatic OD*	0**	0**	-	-	-	-

	SuperCab 4x2				SuperCab 4x4			
	Work Series	XL	XLT	Lariat	Work Series	XL	XLT	Lariat
4.2L V6/5-speed manual OD	S	S	S	-	-	-	-	-
4.2L V6/4-speed automatic OD	0	0	0	-	-	-	-	-
4.6L V8/5-speed manual OD	0	0	0	-	S	S	S	-
4.6L V8/4-speed automatic OD	0	0	0	E	0	0	0	E
5.4L V8/4-speed automatic OD	0	0	0	0	0	0	0	0
5.4L V8 bi-fuel prep engine/4-speed automatic OD*	0**	0**	0**	0**	0**	0**	0**	0**

*Later availability. **Available with 7700 Payload Group. E = Equipment at no charge.

F-150 Tire Availability by Model

	F-150 4x2				F-150 4x4			
	Work Series	XL	XLT	Lariat	Work Series	XL	XLT	Lariat
P235/70R16SL BSW all-season	S	S	S	-	S	S	S	-
P235/70R16SL OWL all-season	-	0	0	-	-	0	0	-
P255/70R16SL BSW all-season (1)	0	0	0	-	-	-	-	-
P255/70R16SL OWL all-terrain	-	-	-	-	0	0	0	-
P255/70R16SL OWL all-season (2)	-	0	0	-	-	0	-	-
P265/70R17SL OWL all-terrain (3)	-	-	-	-	-	-	0	S
P275/60R17SL OWL all-season (4)	-	-	0	S	-	-	-	-
LT245/75R16D BSW all-season (5)	0	0	0	0	-	-	-	-
LT245/75R16D OWL all-terrain (6)	-	-	-	-	0	0	0	0
LT265/70R17C OWL all-terrain (7)	-	-	-	-	-	-	0	0

Spare wheels are steel; full-size spare tire appearance may differ.

(1) Included with optional Payload Group #2 and #3 only. (2) Included with 4x4 Hi-Top Group. (3) Included with optional Hi-XLT Sport Group and optional 4x4 Off-Road Equipment Group. (4) Included with optional 4x2 XLT Sport Group. (5) Included on 4x2 with 7700 Payload Group only. (6) Included on 4x4 with 7700 Payload Group. (7) Available as an option with 4x4 Off-Road Equipment Group only.

Notes

Super Duty F-250/550 Color and Trim

Exterior Paint Colors*	Dark Denim Blue	Medium Parchment	Medium Graphite
Harvest Gold Clearcoat Metallic		*	
Bright Amber Clearcoat Metallic		*	
Red Clearcoat		*	*
Woodland Green Clearcoat Metallic		*	
Dark Toreador Red Clearcoat Metallic		*	*
Deep Wedgewood Blue Clearcoat Metallic	*	*	*
Island Blue Clearcoat Metallic		*	*
Silver Clearcoat Metallic	*	*	*
Black Clearcoat		*	*
Oxford White Clearcoat	*	*	*

*See your dealer for available color and trim combinations.

Super Duty F-Series Pickup Features and Options*

Exterior Features	XL	XLT	Lariat
Front bumper			
Argent painted	S	-	-
Chrome with lower valance	-	S	S
Rear bumper			
Argent rear step	S	-	-
Chrome rear step	0	S	S
Cab steps argent	0	0	S
Mirrors			
Black, manual foldaway	S	S	-
Black, power foldaway	-	0	S
Mirrors (late availability)			
Manual telescopic trailer tow	0	0	-
Power telescopic trailer tow	-	0	0
Moldings			
Black bodyside with chrome accent	-	S	S
Argent top-edge tailgate	S	S	S
Argent box rail moldings	S	S	S
Wheels (4)			
Steel wheels, black center ornaments	S	-	-
Full wheel cover	0	-	-
Deluxe aluminum wheels	0	S	-
Premium aluminum wheels	-	-	S
Spare tire and steel wheel (under frame carrier and lock)	S	S	S
Sealed-beam halogen headlamps	S	-	-
Aero halogen headlamps	-	S	S
Solar tinted glass	S	S	S
Two-tone paint, lower accent	-	0	0
XL Decor Group: chrome front bumper with lower valance; aero halogen headlamps; steel wheels with full wheel covers; locking tailgate	0	-	-
Four doors (SuperCab/Crew Cab)	S	S	S
Quarter/rear windows with flip-out glass (SuperCab)	S	S	S
Privacy Glass	-	0	0
Sliding rear window	0	0	0
Pickup box: partitionable and stackable with four tie-down hooks	S	S	S
Removable tailgate	S	S	S
Lockable tailgate	0	S	S
Front tow hooks	S	S	S
Trailer tow wiring, 4-pin connector	S	S	S
High-mount stop lamp	S	S	S
Cargo box light	S	S	S
Underhood service light	-	S	S

Interior Features

Door trim			
Molded, color-keyed with grab handle, reflector	S	S	S
Hard armrest	S	-	-
Deluxe trim with upper vinyl applique (XLT), upper and lower map pocket, soft armrest	-	S	S
Woodgrain applique and carpet insert on lower map pocket	-	-	S
Floor trim			
Full black vinyl mat	S	-	-
Full color-keyed carpet	-	S	S
Floor mats color-keyed, carpeted (includes rear mats with Crew Cab)	-	-	S
Air conditioning	0	S	S
Speed control/tilt steering wheel	0	S	S
6-way power driver's seat	-	0	S
Gauges: tachometer, voltmeter, coolant temperature, oil pressure, fuel, trip odometer	S	S	S
Powerpoint auxiliary outlet	S	S	S
Overhead console: trip computer (compass, distance-to-empty, outside temperature), general storage bin	-	-	S
Height-adjustable front shoulder belts	S	S	S

Super Duty F-Series Features and Options Cont.*

Interior Features Cont.	XL	XLT	Lariat
Dual instrument panel cupholders	S	S	S
Front passenger-side assist handle	S	S	S
Grab handles over rear doors (Crew Cab only)	-	S	S
Power windows ("one-touch-down" driver's side) and power door locks	-	S	S
Back panel storage provisions: portable hanging bin, storage tray (Lariat 2 trays) and utility hooks (Regular Cab only)	-	S	S
Steering wheel			
Black vinyl	S	S	-
Color-keyed leather	-	-	S
Sun visors			
Vinyl	S	-	-
Cloth with LH strap, RH mirror	-	S	-
Cloth with LH strap, LH and RH mirrors, LH and RH secondary blade	-	-	S
Color-keyed scuff plates	S	S	S

Seating Arrangements

Heavy-duty vinyl full bench seat	S	-	-
Heavy-duty cloth or knitted vinyl full bench seat	0	-	-
Heavy-duty vinyl, knitted vinyl or cloth bucket seats	0	-	-
40/20/40 cloth split bench seat with driver's lumbar support and recliners, center armrest, storage compartment	-	S	-
Luxury captain's chairs with console and driver's lumbar support (cloth XLT, leather-trimmed Lariat)	-	0	0
Leather trimmed 40/20/40 split bench seat	-	-	S
Rear seat, SuperCab (with fold-up 40/60 seat cushion)	S	S	S
Rear seat, Crew Cab (flight bench with XLT, Lariat)	S	S	S

Audio Systems

AM/FM stereo	S	-	-
AM/FM stereo/cassette	0	S	S
Premium AM/FM stereo/cassette/single CD player	0	0	0

Safety and Security Features

Second Generation airbags**	S	S	S
4-wheel disc brakes	S	S	S
Rear anti-lock braking system	S	S	-
4-wheel anti-lock braking system	0	0	S
Remote Keyless Entry System	-	0	S

**Always wear your safety belt and deactivate the passenger airbag when using a rear-facing child safety seat in Regular Cab and SuperCab models.

Performance Features

5.4L V8/5-speed manual OD	S	S	S
5.4L V8/electronic 4-speed auto OD (required in California)	0	0	0
6.8L V10/5-speed manual OD	0	0	0
6.8L V10/electronic 4-speed auto OD	0	0	0
7.3L DI turbo diesel/6-speed manual OD	0	0	0
7.3L DI turbo diesel/electronic 4-speed auto OD	0	0	0
Electric shift-on-the-fly 4x4	0	0	0
Limited slip rear axle	0	0	0
Engine block heater (standard with diesel engine)	0	0	0
Dual alternators (with diesel engine)	0	0	0
Roof clearance lights	0	0	0
License plate bracket	0	0	0
Transmission power take-off provision (available with 6.8L and 7.3L engines with automatic transmission; standard with manual transmission)	0	0	0
Class N trailer hitch receiver	0	0	0

Equipment Groups

Trailer Towing Package: 7-wire harness; front stabilizer bar (4x2); trailer brake wiring/feed kit; heavy-duty 115 amp. alternator (gasoline engines)	0	0	0
4x4 Off-Road Package: transfer case and fuel tank skid plates; "Off-Road 4x4" decal; steering damper	0	0	0
4x4 Snow Plow Package: highest front GAWR/springs; auxiliary rear springs; heavy-duty 115 amp. alternator (gasoline engines); steering damper	0	0	0
Camper Package: front stabilizer bar (4x2); rear stabilizer bar; auxiliary rear springs; heavy-duty 115 amp. alternator (gasoline engines); slide-in camper certification	0	0	0
Heavy-Service Suspension Package: front stabilizer bar (4x2); heavy-service front springs; auxiliary rear springs; steering damper	0	0	0
Max. Front GAWR Package: highest front GAWR/springs; front stabilizer bar (4x2); auxiliary rear springs; steering damper	0	0	0

Super Duty F-Series Pickup Features and Options Cont.*

Tires	Pickup	Chassis Cab
F-250 LT235/85R16E all-season	S	-
F-350 LT215/85R16E all-season (4x2 DRW)	S	S
F-350 LT235/85R16E all-season (4x4 DRW)	S	S
F-350 LT265/75R16E all-season (SRW)	S	S
F-450 225/70R19.5F all-season	-	S
F-550 225/70R19.5F all-season	-	S

S = Standard O = Optional *Features and options shown are for F-350 SRW pickup configurations. Other models (e.g., Chassis Cab) may vary. See your dealer for details.

Super Duty F-Series Powertrain Specifications

Engine	5.4L Triton™ V8	6.8L Triton V10	7.3 Power Stroke® V8 Diesel
Type	SOHC	SOHC	OHV
Fuel injection	Sequential electronic	Sequential electronic	High-pressure, 2-stage injector (HEUI)
Engine control system	EEC-V	EEC-V	EEC-V
Induction system	Specially tuned	Specially tuned	Turbocharger, intercooler
Battery	12 volt; 750 cca/78 amp	12 volt; 750 cca/78 amp	Dual 12 volt; 750 cca/78 amp
Alternator	95 amp (115 amp opt.)	95 amp (115 amp opt.)	110 amp (dual 110 amp opt.)
Cooling system	Pressurized series flow	Pressurized series flow	Pressurized series flow
Cylinders	Eight	Ten	Eight
Cylinder head material	Aluminum	Aluminum	Cast iron
Block material	Cast iron	Cast iron	Cast iron
Valve operation	Hydraulic roller	Hydraulic roller	Push rod/rocker arms
Camshaft drive	Silent chain	Silent chain	Gear
Bore	3.55"	3.55"	4.11"
Stroke	4.16"	4.16"	4.18"
Compression ratio	9.0:1	9.0:1	17.5:1
Horsepower (SAE net)	260 @ 4,500	310 @ 4,250	235 @ 2,600
Torque (SAE net)	350 @ 2,500	425 @ 3,250	500 @ 1,800
Recommended fuel	Unleaded	Unleaded	Diesel

Super Duty F-250/550 Transmission Specifications

Type	M5HD 5-Speed Manual	M6HD 6-Speed Manual	4R100 4-Speed Automatic
Gear ratios (1):			
Low	-	5.79	-
1st	5.72	3.31	2.71
2nd	2.94	2.10	1.54
3rd	1.61	1.31	1.00
4th	1.00	1.00	0.71
5th	0.76	0.72	-
Reverse	5.24	5.23	2.18

Super Duty F-250/550 Interior Dimensions

	Regular Cab	SuperCab	Crew Cab
Head room - front	41.3	41.4	41.4
Leg room - front	40.7	40.7	40.7
Shoulder room - front	68.0	68.0	68.0
Hip room - front	67.4	67.4	67.4
Total front volume (cu. ft.)	66.1	66.3	66.3
Head room - rear	-	38.5	41.0
Leg room - rear	-	32.4	41.3
Shoulder room - rear	-	68.0	68.0
Hip room - rear	-	67.3	67.3
Rear volume (cu. ft.)	-	49.1	66.6
Total volume (cu. ft.)	66.1	115.4	132.9

Super Duty F-250/550 Technical Features

Suspension - Front	
Type	Twin I-beam (F-250/350, 4x2); solid front axle monobeam (F-450/550 4x2, all 4x4)
Axle (rating @ ground)	4,800 lbs. (F-250/350 4x2) 6,000 lbs. (F-450/550 4x2) 5,200 lbs. (F-250/350 4x4) 6,000 lbs. (F-450/550 4x4)
Springs	Coil (F-250/350, 4x2); leaf (F-450/550 4x2, all 4x4)
Shock absorbers	1 1/2" gas-type
Stabilizer bar	Standard F-250/350 4x4, F-350 4x2 Chassis Cab, F-450/550; optional in packages on F-250/350 4x2 pickup

Super Duty F-250/550 Technical Features Cont.

Suspension - Rear	
Type	Solid axle
Axle (rating @ ground)	6,084 lbs. (F-250) 6,830 lbs. (F-350 SRW) 9,750 lbs. (F-350 DRW) 11,000 lbs. (F-450) 13,500 lbs. (F-550)
Springs	Leaf
Shock absorbers	1 1/2" gas-type
Stabilizer bar	Standard on F-350 4x4 DRW Pickup, F-350 Chassis Cab, F-450/550; optional in packages on F-250/350 where not standard

Steering

Type	Halterberger linkage (4x2), cross-tie linkage (4x4)
Assist	Power
Overall ratio	19.8:1 F-250/350 4x2; 20.3:1 F-450/550 4x2, all 4x4
Turning circle curb-to-curb (ft.)	48.25 w/4x2 137 wb; 70.82 w/4x4 201 wb (range)

Brakes - Front

Type	4-wheel disc (standard); 4-wheel ABS (standard on all models 10,000 lbs. GVWR and over, and Lariat models under 10,000 lbs. GVWR); rear ABS standard on other models
Rotor diameter	13.03" (F-250/350); 14.53" (F-450/550)
Lining area (sq. in.)	12.40 (F-250/350); 13.90 (F-450/550)

Brakes - Rear

Type	4-wheel disc (standard); 4-wheel ABS (standard on all models 10,000 lbs. GVWR and over, and Lariat models under 10,000 lbs. GVWR); rear ABS standard on other models
Rotor diameter	12.83" (F-250/350); 15.55" (F-450/550)
Lining area (sq. in.)	8.68 (F-250/350); 13.90 (F-450/550)

Wheels

Type	Steel (standard); aluminum on F-250/350 (optional)
Size	16" (F-250/350); 19.5" (F-450/550)
No. of studs	8
Bolt circle diameter	170mm, 6.7" (F-250/350); 225mm, 8.85" (F-450/550)

(All dimensions in inches unless otherwise specified.)

Fuel Capacity

Location/capacity	Midship 29 gal. (standard F-250/350 short wheelbase pickup) 38 gal. (standard F-250/350 long wheelbase pickup) Aft-of-rear axle 40 gal. (standard chassis cab) Midship 19 gal. (optional chassis cab in place of 40 gal. tank) RH outboard of frame saddle 23 gal. tank Optional 164.8, 200.8 wheelbase chassis cab with 7.3L diesel, requires 19 gal. midship tank (late availability)
-------------------	--

Powertrains

Model	Engine*	4x4 Transfer Case	5-Speed Manual	6-Speed Manual	4-Speed Automatic
F-250/350**	5.4L SEFI V8	2-speed man.	S	-	0
F-250/350**	6.8L SEFI V10	2-speed man.	0	-	0
F-250/350	7.3L Diesel	2-speed man.	-	0	0
F-450	6.8L SEFI V10	2-speed man.	S	-	0
F-450	7.3L Diesel	2-speed man.	-	0	0
F-550	6.8L SEFI V10	2-speed man.	-	-	S
F-550	7.3L Diesel	2-speed man.	-	0	0

*6.8L V10 bi-fuel prep engine/4-speed automatic will be available on certain dual-rear-wheel chassis cab models (late availability). See your dealer for information.

**6.8L engine standard with F-350 DRW Crew Cab pickup and DRW chassis cabs. See your dealer for powertrain availability in California.

Super Duty F-Series Pickup/Weights and Dimensions

Regular Cab	F-250 SRW	F-350 SRW	F-350 DRW
Wheelbase (in.)	137	137	137
Max. GVWR (lbs.) 4x2/4x4	8,800	9,900	11,200
Max. payload (lbs.) 4x2/4x4	3,725/3,195	4,705/4,305	5,785/5,290
Overall length (in.)	226.6	226.6	226.6
Max. width (in.)	79.9	79.9	95.5
Axle clearance (in.) 4x2/4x4	8.3	8.1	7.0/7.8
Box length (ft.) volume (cu. ft.)	8/77.7	8/77.7	8/77.7
Box delete option/cab-to-axle (in.)	Yes/56.2	-	Yes/56.2

Super Duty F-Series Pickup/Weights and Dimensions Cont.

SuperCab	F-250 SRW	F-250 SRW	F-350 SRW	F-350 SRW	F-350 DRW
Wheelbase (in.)	141.8	158	141.8	158	158
Max. GVWR (lbs.) 4x2/4x4	8,800	8,800	9,900	9,900	11,200
Max. payload (lbs.) 4x2	3,560	3,345	4,640	4,425	5,500
4x4	3,135	2,900	4,245	4,015	5,080
Overall length (in.)	231.4	247.6	231.4	247.6	247.6
Max. width (in.)	79.9	79.9	79.9	79.9	95.5
Axle clearance (in.) 4x2/4x4	8.3	8.3	8.1	8.1	7.0/7.8
Box length (ft.) volume (cu. ft.)	6.75/64.7	8/77.7	6.75/64.7	8/77.7	8/77.7
Box delete option/cab-to-axle (in.)	-	Yes/56.2	-	-	Yes/56.2

Crew Cab	F-250 SRW	F-250 SRW	F-350 SRW	F-350 SRW	F-350 DRW	F-350 DRW
Wheelbase (in.)	156.2	172.4	156.2	172.4	156.2	172.4
Max. GVWR (lbs.) 4x2/4x4	8,800	8,800	9,900	9,900	11,200	11,200
Max. payload (lbs.) 4x2	3,215	3,045	4,295	4,125	5,210	4,990
4x4	2,780	2,645	3,890	3,755	4,810	4,485
Overall length (in.)	245.8	262.0	245.8	262.0	245.8	262.0
Max. width (in.)	79.9	79.9	79.9	79.9	95.5	95.5
Axle clearance (in.) 4x2/4x4	8.3	8.3	8.1	8.1	7.0/7.8	7.0/7.8
Box length (ft.) volume (cu. ft.)	6.75/64.7	8/77.7	6.75/64.7	8/77.7	6.75/64.7	8/77.7
Box delete option/cab-to-axle (in.)	-	Yes/56.2	-	-	-	Yes/56.2

Note: There are weight definitions at the end of the specifications section.

Super Duty F-Series Chassis Cab/Weights and Dimensions

Regular Cab	F-350 SRW	F-350 DRW	F-350 DRW	F-450 DRW	F-450 DRW	F-550 DRW	F-550 DRW	F-550 DRW
Wheelbase (in.)	140.8	140.8	164.8	140.8	164.8	200.8	140.8	164.8
Cab-to-axle (in.)	60	60	84	60	84	120	60	84
Max. GVWR (lbs.)								
4x2	9,900	12,500*	12,500*	15,000	15,000	15,000	17,500	17,500
4x4	9,900	12,500*	12,500*	15,000	15,000	15,000	17,500	17,500
Max. payload (lbs.)								
4x2	5,050	6,620	6,500	8,915	8,810	8,500	11,280	11,180
4x4	4,615	6,150	6,030	8,605	8,495	8,160	10,955	10,840
Overall length (in.)	225.7	225.7	249.7	225.7	249.7	285.7	225.7	249.7
Top of cab to ground (empty)								
4x2	75.7	74.7	74.7	80.6	80.5	80.2	81.7	81.4
4x4	79.8	80.0	80.0	80.7	80.5	80.0	81.7	81.2
Top of frame to ground (empty)								
4x2	26.5	26.5	26.1	27.4	27.4	27.3	27.4	27.2
4x4	28.2	28.3	28.0	27.5	27.5	27.4	27.4	27.4
Axle clearance (in.)								
4x2	8.1	7.0	7.0	8.0	8.0	8.0	8.0	8.0
4x4	8.1	7.8	7.8	8.0	8.0	8.0	8.0	8.0
Tire width data								
Front tread (in.)								
4x2	68.7	68.7	68.7	68.4	68.4	68.4	68.4	68.4
4x4	68.4	68.4	68.4	68.4	68.4	68.4	68.4	68.4
Rear tread 4x2/4x4 (in.)	68.1	-	-	-	-	-	-	-
Outside width (in.)								
4x2	79.0	90.7	90.7	93.6	93.6	93.6	93.6	93.6
4x4	79.0	91.7	91.7	93.6	93.6	93.6	93.6	93.6

SuperCab	F-350 SRW	F-350 DRW
Wheelbase (in.)	161.8	161.8
Cab-to-axle (in.)	60	60
Max. GVWR (lbs.) 4x2/4x4	9,900	12,500*
Max. payload (lbs.) 4x2/4x4	4,760/4,325	6,300/5,895
Overall length (in.)	246.7	246.7
Top of cab to ground (empty)		
4x2	75.9	75.4
4x4	79.9	79.5
Top of frame to ground (empty)		
4x2	26.2	26.2
4x4	28.0	28.1
Axle clearance (in.) 4x2/4x4	8.1	7.0/7.8
Tire width data		
Front tread 4x2/4x4 (in.)	68.7/68.4	68.7/68.4
Rear tread 4x2/4x4 (in.)	68.1	-
Outside width 4x2/4x4 (in.)	79.0	90.7/91.7

Super Duty F-Series Chassis Cab/Weights and Dimensions Cont.

Crew Cab	F-350 SRW	F-350 DRW	F-450 DRW	F-550 DRW
Wheelbase (in.)	176.2	176.2	176.2	176.2
Cab-to-axle (in.)	60	60	60	60
Max. GVWR (lbs.) 4x2/4x4	9,900	12,500*	15,000	17,500
Max. payload (lbs.) 4x2/4x4	4,495/4,050	6,055/5,600	8,345/8,025	10,700/10,375
Overall length (in.)	261.1	261.1	261.1	261.1
Top of cab to ground (empty)				
4x2	75.9	75.8	80.8	81.4
4x4	79.8	80.2	80.9	81.3
Top of frame to ground (empty)				
4x2	26.0	25.9	27.3	27.3
4x4	27.7	27.8	27.4	27.3
Axle clearance (in.) 4x2/4x4	8.1	7.0/7.8	8.0	8.0
Tire width data				
Front tread 4x2/4x4 (in.)	68.7/68.4	68.7/68.4	68.4	68.4
Rear tread 4x2/4x4 (in.)	68.1	-	-	-
Outside width 4x2/4x4 (in.)	79.0	90.7/91.7	93.6	93.6</

**Super Duty F-250/350 Pickup
Maximum Loaded Trailer Weight (Lbs.) Cont.***

Manual Transmission		F-250		F-350		F-350	
Crew Cab Pickup	GCWR	4x2	4x4**	4x2 SRW	4x2 DRW	4x4 SRW**	4x4 DRW**
Engine	Axle Ratio						
5.4L	3.73	13,500	7,500	7,100	7,500	7,100	7,100
V8	4.10	15,000	9,000	8,600	8,900	8,600	8,600
6.8L	3.73	16,500	10,300	10,000	10,300	10,000	9,800
V10	4.30	20,000	13,800	13,500	13,800	13,500	13,100
7.3L V8 Diesel	3.73	20,000	13,300	12,900	13,300	13,000	12,800
	4.10	20,000	-	-	13,000	-	12,600

* Fifth-wheel trailer weights shown. For conventional towing, trailer weights should not exceed 10,000 pounds.

**If you plan to fifth-wheel tow with a 4x4 model, be sure to consider the following maximum ride (tailgate) heights: F-250: 36-37 inches; F-350 SRW: 58-59 inches; F-350 DRW: 57-58 inches.

**Super Duty F-350/450/550 Chassis Cab
Maximum Loaded Trailer Weight (Lbs.)***

Automatic Transmission		F-350		F-450		F-550	
Regular Chassis Cab	GCWR	4x2 SRW	4x4 SRW	4x2 DRW	4x4 DRW	4x2 DRW	4x4 DRW
Engine	Axle Ratio						
5.4L	3.73	13,500	7,400	6,900	6,500	6,900	6,500
V8	4.10	15,000	8,900	8,400	8,000	8,400	8,000
6.8L	3.73	17,000	10,700	10,300	9,800	10,200	9,800
V10	4.30	20,000	-	-	13,200	12,800	12,800
7.3L V8 Diesel	3.73	20,000	13,300	12,900	12,800	12,400	12,400
	4.10	20,000	-	-	12,800	12,400	12,400

Automatic Transmission		F-450		F-550	
Regular Chassis Cab	GCWR	4x2 DRW	4x4 DRW	4x2 DRW	4x4 DRW
Engine	Axle Ratio				
6.8L	4.88	24,000	16,400	16,600	16,300
V10	5.38	26,000	18,700	18,400	18,300
7.3L V8 Diesel	4.88	26,000	18,200	17,900	17,800

Automatic Transmission		F-350		F-350		F-350	
Super Chassis Cab	GCWR	4x2 SRW	4x4 SRW	4x2 DRW	4x4 DRW	4x2 DRW	4x4 DRW
Engine	Axle Ratio						
5.4L	3.73	13,500	7,100	6,700	-	-	-
V8	4.10	15,000	8,600	8,200	-	-	-
6.8L	3.73	17,000	10,400	10,000	10,000	9,700	9,700
V10	4.30	20,000	-	-	13,000	12,700	12,700
7.3L V8 Diesel	3.73	20,000	13,000	12,600	12,600	12,200	12,200
	4.10	20,000	-	-	12,600	12,200	12,200

Automatic Transmission		F-450		F-550	
Super Chassis Cab	GCWR	4x2 DRW	4x4 DRW	4x2 DRW	4x4 DRW
Engine	Axle Ratio				
6.8L	4.88	24,000	16,100	15,800	15,700
V10	5.38	26,000	18,100	17,800	17,700
7.3L V8 Diesel	4.88	26,000	17,600	17,300	17,200

Automatic Transmission		F-450		F-550	
Super Chassis Cab	GCWR	4x2 DRW	4x4 DRW	4x2 DRW	4x4 DRW
Engine	Axle Ratio				
6.8L	4.88	24,000	16,100	15,800	15,700
V10	5.38	26,000	18,100	17,800	17,700
7.3L V8 Diesel	4.88	26,000	17,600	17,300	17,200

Manual Transmission		F-350		F-350		F-350	
Regular Chassis Cab	GCWR	4x2 SRW	4x4 SRW	4x2 DRW	4x4 DRW	4x2 DRW	4x4 DRW
Engine	Axle Ratio						
5.4L	3.73	13,500	7,400	7,000	7,000	6,600	6,600
V8	4.10	15,000	8,900	8,500	8,500	8,100	8,100
6.8L	3.73	16,500	10,200	9,900	9,800	9,400	9,400
V10	4.30	20,000	-	-	13,300	12,900	12,900
7.3L V8 Diesel	3.73	20,000	13,200	12,800	12,800	12,300	12,300
	4.10	20,000	-	-	12,800	12,300	12,300

**Super Duty F-350/450/550 Chassis Cab
Maximum Loaded Trailer Weight (Lbs.) Cont.***

Manual Transmission		F-450		F-550	
Regular Chassis Cab	GCWR	4x2 DRW	4x4 DRW	4x2 DRW	4x4 DRW
Engine	Axle Ratio				
6.8L	4.88	22,000	14,700	14,400	-
V10	5.38	22,000	14,700	14,400	-
7.3L V8 Diesel	4.88	26,000	18,200	17,900	17,800

Automatic Transmission		F-350		F-350		F-350	
Super Chassis Cab	GCWR	4x2 SRW	4x4 SRW	4x2 DRW	4x4 DRW	4x2 DRW	4x4 DRW
Engine	Axle Ratio						
5.4L	3.73	13,500	7,100	6,700	-	-	-
V8	4.10	15,000	8,600	8,200	-	-	-
6.8L	3.73	16,500	10,000	9,600	9,600	9,200	9,200
V10	4.30	20,000	-	-	13,100	12,700	12,700
7.3L V8 Diesel	3.73	20,000	12,900	12,500	12,600	12,200	12,200
	4.10	20,000	-	-	12,600	12,200	12,200

Automatic Transmission		F-450		F-550	
Crew Chassis Cab	GCWR	4x2 SRW	4x4 SRW	4x2 DRW	4x4 DRW
Engine	Axle Ratio				
5.4L	3.73	13,500	6,800	6,400	-
V8	4.10	15,000	8,300	7,900	-
6.8L	3.73	16,500	9,700	9,300	8,900
V10	4.30	20,000	-	-	12,800
7.3L V8 Diesel	3.73	20,000	12,700	12,200	12,300
	4.10	20,000	-	-	12,300

Automatic Transmission		F-450		F-550	
Crew Chassis Cab	GCWR	4x2 DRW	4x4 DRW	4x2 DRW	4x4 DRW
Engine	Axle Ratio				
6.8L	4.88	22,000	14,200	13,800	-
V10	5.38	22,000	14,200	13,800	-
7.3L V8 Diesel	4.88	26,000	17,600	17,300	17,500

* Fifth-wheel trailer weights shown. For conventional towing, trailer weights should not exceed 10,000 pounds.

Super Duty F-650/750 Color and Trim

Exterior Paint Colors	Medium Graphite
School Bus Yellow	*
Bright Red	*
Dark Torsador Red	*
Jewel Green Metallic	*
Chesapeake Blue Metallic	*
Bright Silver Metallic	*
Oxford White	*

Super Duty F-650/750 Features and Options

Exterior Features	XL	XLT
Front bumper		
Steel full width, painted platinum	\$	-
Steel full width, chrome	-	\$
Mirrors		
Stainless dual western with auxiliary convex	\$	\$
Wheels		
22.5x7.5 10-hole ISO steel disc (6) (26/30,000 GVWR)	\$	\$
22.5x8.25 10-hole ISO steel disc (6) (33,000 GVWR)	\$	\$
Wheel seals, front mineral oil	0	0
Wheel seals, front synthetic lube	0	0
Two doors (Regular Cab)	\$	\$
Four doors (Super and Crew Cab)	\$	\$
Tinted glass	\$	\$
Grab handles (pillar-mounted on Regular/Crew Cab)	\$	\$
Argent grille	\$	\$
Black door handles	\$	\$
Sealed beam halogen dual beam headlights	\$	\$
Tilt type and fender assembly hood	\$	\$
Roof clearance lights (5)	\$	\$
Tow hooks	0	\$

Interior Features	XL	XLT
Door Trim		
Color-keyed molded with grab handle and reflector	\$	-
Hard armrest	\$	-
Soft armrest	-	\$
Upper vinyl insert and map pocket with carpet	-	\$
Floor Trim		
Black vinyl with diesel engine insulation package	\$	\$
Gauges		
Tachometer, trip odometer, voltmeter, oil pressure, coolant temperature, fuel gauge and indicator lights	\$	\$
Air conditioning	0	\$
Power steering	\$	\$
Assist handles (passenger A-pillar mounted)	\$	\$
Assist handles over rear doors (Crew Cab only)	-	\$
Back panel storage: hanging bin, storage tray and utility hooks (Regular Cab only)	-	\$
Dome lamp, LH/RH door-activated V-P switch, operated with delay	\$	\$
Sun visor, vinyl with LH strap	\$	\$
Auxiliary powerpoint	\$	\$
Color-keyed, all-position safety belts	\$	\$
Adjustable safety belt front seat D-rings (Super/Crew Cabs only)	\$	\$
Color-keyed instrument panel with glove box, 4 air registers with positive shut-off, ashtray and lighter	\$	\$
Power door locks and windows	-	\$
Power door locks and windows delete	-	0

Seating Arrangements	XL	XLT
Front mid-back driver's seat with 2-person passenger vinyl seat with vinyl seats, fixed seat backs	\$	-
knit vinyl seats, fixed seat backs (Super/Crew Cab)	0	-
knit vinyl seats, folding seat backs (Regular Cab)	0	-
cloth seats, fixed seat backs (Super/Crew Cab)	0	-
cloth seats, folding seat backs (Regular Cab)	0	-
Front hi-back driver's seat with 2-person passenger vinyl seat with knit vinyl seats, fixed seat backs (Super/Crew Cab)	-	\$
knit vinyl seats, folding seat backs (Regular Cab)	-	\$
cloth seats, fixed seat backs (Super/Crew Cab)	-	0
cloth seats, folding seat backs (Regular Cab)	-	0
Rear seat delete (SuperCab)	\$	-
Rear bench seat with a convert-to-load floor flip-up feature (SuperCab)	-	\$
Rear bench with forward fold (Crew Cab)	\$	\$

Super Duty F-650/750 Features and Options Cont.

Audio Systems	XL	XLT
AM/FM stereo with digital clock and 2 speakers	\$	-
AM/FM stereo cassette with cassette clock and 4 speakers	0	\$
AM/FM stereo with cassette/single CD player/dock	0	0

Safety and Security Features	XL	XLT
Four-wheel anti-lock braking system	\$	\$

Performance Features	XL	XLT
65/110-amp. alternator	\$	\$
Front axle		
9,000 (26/30,000 GVWR)	\$	\$
12,000 (33,000 GVWR)	\$	\$

Rear axle	XL	XLT
17,500 RS-17-145 (26,000 GVWR with hydraulic brakes)	\$	\$
17,500 RS-17-144 (with air brakes)	0	0
21,000 RS-21-145 (30/33,000 GVWR)	\$	\$
23,000 RS-23-160 (33,000 GVWR)	0	0

Battery (2)	XL	XLT
625 CCA 93 AH	\$	\$
900 CCA 96 AH	0	0

Brakes	XL	XLT
Hydraulic split system disc/disc anti-lock, 4-channel (26/30,000 GVWR)	\$	\$
Air, Rockwell can type drum/drum anti-lock, 4-channel (33,000 GVWR)	\$	\$
Air dryer - Bendix AD-IP	0	0
Full air package	0	0
Moisture ejectors	0	0

Clutch	XL	XLT
14", 1-plate, self-adjusting	\$	\$
Exhaust - horizontal muffler and pipe, RH	\$	\$

Frame	XL	XLT
18 S/M-SOK PSI (26/30,000 GVWR)	\$	\$
15.9 S/M-110K PSI (33,000 GVWR)	\$	\$

Fuel tank	XL	XLT
50 gallon steel step RH	\$	\$
Dual 50 gallon	0	0
Fuel heater	0	0
Fuel water separator-heater	0	0

Shock absorbers	XL	XLT
Front double acting telescopic	\$	\$
Rear double acting telescopic	0	0

Front springs	XL	XLT
8,500 multi-leaf (26,000 GVWR)	\$	\$
9,000 multi-leaf (30,000 GVWR)	\$	\$
12,000 multi-leaf (33,000 GVWR)	\$	\$

Rear springs	XL	XLT
17,500 multi-leaf (26,000 GVWR)	\$	\$
21,000 multi-leaf (30/33,000 GVWR)	\$	\$
19,000 multi-leaf (26,000 GVWR)	0	0
23,000 multi-leaf (33,000 GVWR)	0	0
Auxiliary four-leaf	0	0

Starter	XL	XLT
28 MT with Cummins; 37 MY with Caterpillar and Power Stroke	\$	\$
41 MT with Caterpillar	0	0
Power steering	\$	\$

Tires (6)	XL	XLT
-----------	----	-----

E-Series Color and Trim

Exterior Paint Colors	Medium Graphite	Medium Parchment
E-Series Wagon		
Harvest Gold Clearcoat Metallic	**	*
Chestnut Clearcoat Metallic		**
Toreador Red Clearcoat Metallic	*	*
Deep Wedgewood Blue Clearcoat Metallic	*	*
Light Blue Clearcoat Metallic	*	*
Woodland Green Clearcoat Metallic	*	*
Deep Emerald Green Clearcoat Metallic	*	*
Silver Clearcoat Metallic	*	*
Black Clearcoat	*	*
Oxford White Clearcoat	*	*
Chateau'		
Toreador Red Clearcoat Metallic	*	*
Deep Wedgewood Blue Clearcoat Metallic	*	*
Deep Emerald Green Clearcoat Metallic	*	*
Black Clearcoat	*	*
Oxford White Clearcoat	*	*

*XL only. **XLT only. *Includes Silver Clearcoat Metallic lower rocker treatment.
NOTE: See your dealer for available color and trim combinations.

E-Series Wagon Features and Options

Seats	E-150		E-350 Super Duty		E-350 Super Duty Extended	
	XL	XLT	XL	XLT	XL	XLT
8 passengers: two front bucket seats; two 3-passenger rear bench seats	S	-	0	-	-	-
8 passengers: two front captain's chairs; two 3-passenger rear bench seats	-	S	-	0	-	-
12 passengers: two front bucket seats; two 3-passenger rear bench seats; one 4-passenger bench seat	-	-	S	-	0	-
12 passengers: two front captain's chairs; two 3-passenger rear bench seats; one 4-passenger bench seat	-	-	-	S	-	0
15 passengers: two front bucket seats; three 3-passenger rear bench seats; one 4-passenger bench seat	-	-	-	-	S	-
15 passengers: two front captain's chairs; three 3-passenger rear bench seats; one 4-passenger bench seat	-	-	-	-	-	S

Appearance/Comfort/Convenience

Air conditioning (front only)	S	S	S	S	S	S
High-capacity air conditioning (front and rear)	0	S	0	S	P	P
Power driver's seat	-	0	-	0	-	0
Deluxe engine cover console	0	S	0	S	0	S
Power windows and door locks	0	S	0	S	0	S
Speed control and tilt steering wheel	0	P	0	P	0	S
Sliding side cargo door	0	0	0	0	0	0
Bright swing-out recreational mirrors	0	0	0	0	0	0
Power sail-mount mirrors	-	S	-	S	-	S
Privacy Glass	0	0	0	0	0	0
Chateau Appearance Package ¹	-	0	-	0	-	-
Chrome rear step bumper	0*	0	0*	0	0*	0
Light charcoal rear step bumper	0	-	0	-	0	-
Interior Upgrade Package ²	0	-	0	-	0	-
Exterior Upgrade Package ³	0	-	0	-	0	-
Dual illuminated sun visors	-	0	-	0	-	0
Full-length running boards	0	0	0	0	0	0
Full-length vinyl floor mat	S	0	S	0	S	0

Safety/Security

Second Generation driver and passenger airbag supplemental restraint system	S	S	S	S	S	S
Power brakes with 4-wheel anti-lock system (4-wheel disc with E-350 Super Duty)	S	S	S	S	S	S
Remote Keyless Entry System/panic alarm	0	0	0	0	0	0

Audio Systems

AM/FM stereo, digital clock, four speakers	S	-	S	-	S	-
AM/FM stereo, digital clock, six speakers	-	S	-	S	-	S
AM/FM stereo/cassette, digital clock, four speakers (six speakers with XLT)	0	S	0	S	0	S

E-Series Wagon Features and Options Cont.

Audio Systems Cont.	E-150		E-350 Super Duty		E-350 Super Duty Extended	
	XL	XLT	XL	XLT	XL	XLT
Premium AM/FM stereo/cassette, digital clock, six speakers	-	0	-	0	-	0
Premium AM/FM stereo/cassette, digital clock, compact disc, six speakers (Dual Media)	-	0	-	0	-	0
Performance						
4.2L V6/4-speed automatic OD	S	S	-	-	-	-
4.6L Triton V8/4-speed automatic OD	0	0	-	-	-	-
5.4L Triton V8/4-speed automatic OD	0	0	-	-	-	-
5.4L Triton V8/electronic 4-speed automatic OD	-	-	S	S	S	S
5.4L Triton natural-gas V8/electronic 4-speed automatic OD	-	-	0	0	0	0
6.8L Triton V10/electronic 4-speed automatic OD	-	-	0	0	0	0
7.3L Power Stroke V8 turbo diesel/electronic 4-speed automatic OD	-	-	0	0	0	0
Dual system 110-amp alternators (7.3L turbo diesel engine only)	-	-	-	0	-	0
Heavy-duty auxiliary battery	-	0	-	0	-	0
Engine block heater	0	0	0	0	0	0
Class I Trailer Towing Package ⁽⁴⁾	0	0	0	0	0	0
Class II/III Trailer Towing Package ⁽⁵⁾	-	0	0	0	0	0

*May only be ordered with Exterior Upgrade Package in XL.
S = Standard 0 = Optional

(1) Requires XLT Package 705A or 713A and includes leather-wrapped steering wheel, 645 bright cast aluminum wheels (E-150), 644 16" full wheel covers (E-350 Super Duty only), lower accent two-tone paint, rear door badge, 7-passenger cloth dual captain's chairs with 3-passenger bench seat.
(2) Full-length XLT carpeting, XLT side/rear cargo door trim panels, cloth bucket seats (C2), dash absorber, illuminated entry, headlights-on audible alert, warning chime.
(3) Front and rear chrome bumpers, chrome grille, aerodynamic halogen headlights, full wheel covers with E-150; sport wheel covers with E-350 Super Duty. (4) 4-pin trailer wiring harness. (5) 7-pin trailer wiring harness, electric brake tap-in capability, relay system for back-up/running lights, frame-mounted hitch receiver.

E-Series Van Features and Options

Seats	E-150		E-250		E-350 Super Duty	
	Comm.	Rec.	Comm.	Rec.	Comm.	Rec.
Dual buckets	S	-	S	-	S	-
Dual captain's chairs	0	-	0	-	0	-
Dual captain's chairs without trim	-	0	-	0	-	0
Power driver's seat	-	0	-	0	-	0
Seats not included (manual pedestal)	-	S	-	S	-	S
Seats not included (power pedestal)	-	0	-	0	-	0

Appearance/Comfort/Convenience

Air conditioning	S	S	S	S	S	S
High-capacity air conditioning (front and rear)	0	-	0	-	0	-
Deluxe engine cover console	0	-	0	-	0	-
Power windows/door locks	-	P	-	P	-	P
Sliding side cargo door	0	0	0	0	0	0
Fixed rear cargo door glass	0	-	0	-	0	-
Fixed side/tilt rear cargo door glass	0	S	0	S	0	S
Swing-out 60% side cargo door glass/tilt rear cargo door glass	0	0	0	0	0	0
Privacy Glass	0	0	0	0	0	0
All-around windows	0	0	0	0	0	0
Chrome rear step bumper	0*	-	0*	-	0*	-
Light charcoal rear step bumper	0	-	0	-	0	-
Light and Convenience Group ¹	S	P	S	S	S	S
Bright swing-out recreational mirrors	0	-	0	-	0	-
Power sail-mount mirrors	-	S	-	S	-	S
Speed control/tilt steering wheel	0	P	0	P	0	S
Power Group (locks, windows, mirrors, Remote Keyless Entry System)	0	-	0	-	0	-
Interior Upgrade Package ²	0	-	0	-	0	-
Exterior Upgrade Package ³	0	-	0	-	0	-
Full-length floor mats	0	-	0	-	0	-

Safety and Security

Second Generation driver and passenger airbag supplemental restraint systems	S	S	S/O**	S	0	S
Power brakes with 4-wheel anti-lock system (4-wheel disc brakes with E-350 Super Duty)	S	S	S	S	S	S
Remote Keyless Entry System/panic alarm	0	S	0	S	0	S
Belt-Minder System	S	S	S	S	S	S

E-Series Van Features and Options Cont.

Audio Systems	E-150		E-250		E-350 Super Duty	
	Comm.	Rec.	Comm.	Rec.	Comm.	Rec.
AM/FM stereo, digital clock, two speakers	S	-	S	-	S	-
AM/FM stereo/cassette, digital clock, four speakers (6 with RV)	0	S	0	S	0	S
Premium AM/FM stereo/cassette, digital clock, six speakers	-	0	-	0	-	0
Premium AM/FM stereo/cassette, digital clock, CD, six speakers, dual media	-	0	-	0	-	0
Performance						
4.2L V6/4-speed automatic OD	S	S	S	S	-	-
4.6L Triton™ V8/4-speed automatic OD	0	0	-	-	-	-
5.4L Triton V8/4-speed automatic OD	0	0	0	0	-	-
5.4L Triton V8/electronic 4-speed automatic OD	-	-	-	-	S	S
5.4L Triton natural-gas V8/electronic 4-speed automatic OD	-	-	0	-	0	-
6.8L Triton V10/electronic 4-speed automatic OD	-	-	-	-	0	0
7.3L Power Stroke® V8 turbo diesel/electronic 4-speed automatic OD	-	-	-	-	0	0
Heavy-duty 115-amp alternator	S	S	S	S	S	S
Dual system 110 alternators (with 7.3L turbo diesel engine only)	-	-	-	-	0	0
Heavy-duty auxiliary battery	0	0	0	0	0	0
Engine block heater	0	0	0	0	0	0
Handling Package ⁴	S	S	S	S	S	S
Class I Trailer Towing Package ⁵	0	S	0	S	S	S
Class II/III Trailer Towing Package ⁶	0	0	0	0	0	0
Full function auxiliary idle control	-	-	-	-	0	-
9600# GVWR	-	-	-	0	-	-
Front GAWR-one up	0	0	0	0	0	0
Clean Fuel Fleet LEV option	0	0	0	0	0	0
Auxiliary Fuel Port	0	-	0	-	0	-

P = Preferred Equipment Package S = Standard 0 = Optional *May only be ordered with Exterior Upgrade Package.
**Optional on over-8500-lb. GVWR models.

(1) Courtesy light switches - all doors, warning chime, headlights on audible alert, illuminated entry. (2) Full-length carpet and cloth headliner, cloth front door trim panels, dual captain's chairs (E or EN), cloth sun visors, dash absorber, full "S" pillar trim, hardboard side/rear door trim panels. (3) Front and rear chrome bumpers, chrome grille, aerodynamic halogen headlights, full wheel covers. (4) Front stabilizer bar and heavy duty shock absorbers. (5) 4-pin trailer wiring harness (6) 7-pin trailer wiring harness (black style female connector) with bumper bracket, electric brake controller tap-in capability, relay system for back-up/running lights, trailer tow hitch receiver.

E-Series Van Equipment Groups

	Comm.	Rec.	Comm.	Rec.	Comm.	Rec.
	740A	743A	750A	753A	760A	763A
Crew Van Package: 2nd-row vinyl bench seat, metal bulkhead, low series rear partial headliner, full B-pillar trim panels, low series (hardboard) side door and back door trim panels, LH lower trim panel behind driver's seat, restraints with metal retractor cover for 2nd-row bench seat, pull handle on 40% side door and RH back door	0	-	0	-	0	-
Crew Van Interior Upgrade Package: 2nd-row cloth bench seat, full length carpeting, dual cloth captain's chairs, cloth sun visors	0	-	0	-	0	-
Ambulance Prep Package	-	-	-	-	0	-
Ambulance Prep Package not required	-	-	0	0	0	0
EconoCargo System: polyethylene panels covering walls and ceiling, includes bulkhead, two tracks and tie-down straps	0	-	0	-	0	-
Masterack racks and bins: fully installed steel shelving/drawers and cabinets, includes bulkhead with lockable door	0	-	0	-	0	-
Auxiliary Heater-A/C Connector Package	-	0	-	0	-	0
Auxiliary Heater-A/C Connector Package (w/ rear A/C controls)	-	0	-	0	-	0

RV Plus Package: OWL tires, aluminum wheels, (E14)16" sport wheel covers, (E24) leather-wrapped steering wheel, swing-out side/tilt rear door glass, auxiliary heater/AC Connector Package with rear controls, 4.6L engine (E14)/5.4L engine (E24) premium AM/FM cassette/radio, back door lock switch, trailer tow hitch receiver

NOTE: See E-series cutaway/stripped chassis section for detailed description of packages.

E-Series Cutaway Commercial/Stripped Chassis Features and Options

Seats	Cutaway		Stripped Chassis		
	E-350 Super Duty	E-450 Super Duty	E-250 Super Duty	E-350 Super Duty	E-450 Super Duty
Dual buckets	\$	\$	-	-	-
Dual cloth hi-back buckets	0	0	-	-	-
Dual captain's chairs	0	0	-	-	-
Dual captain's chairs without trim	0	0	-	-	-
6-way power driver's seat (Interior Upgrade Package)	0	0	-	-	-
Power Seat Prep Package	0	0	-	-	-
Seats not included - manual pedestal	0	0	-	-	-
Seats not included - no pedestal	-	-	\$	\$	\$
Appearance/Comfort/Convenience					
Front air conditioning	\$	\$	\$	\$	\$
Air conditioning delete	0	0	-	-	-
Modified vehicle wiring kit and system	\$	\$	\$	\$	\$
Deluxe engine console cover	0	0	\$	\$	\$
Dual electric horns	\$	\$	\$	\$	\$
Power locks/windows	0	0	-	-	-
Tilt wheel steering	-	-	\$	\$	\$
Dual alternator system	0	0	-	-	-
Auxiliary idle control	0	0	-	-	-
Heavy-duty/auxiliary battery	0	0	-	-	-
Heavy-duty alternator	\$	\$	\$	\$	\$
Black painted front bumper	0	0	\$	\$	\$
White painted front bumper	0	0	-	-	-
Right hand door (not included)	0	0	-	-	-
One-up front GAWR	0	-	0	0	-
55 gallon fuel tank	0	\$	-	0	\$
Engine block heater	0	0	0	0	0
Bright swing-out mirrors	0	0	-	-	-
Bright swing-out recreational mirrors	0	0	-	-	-
Black handset sail-mount mirrors	0	-	-	-	-
Alternate lateral frame spacers	0	0	-	-	-
Standard pattern frame spacers	0	0	-	-	-
Speed control/tilt steering wheel	0	0	-	-	-
Auxiliary fuel port	\$	\$	\$	\$	\$
Interval windshield wipers (control only, no wiper motor)	\$	\$	\$	\$	\$
Frame (isolator) pucks	0	0	-	-	-
Audio Systems					
Electronic AM/FM stereo/clock	\$	\$	-	-	-
Electronic AM/FM stereo/clock/cassette	0	0	-	-	-
Electronic AM/FM stereo/clock/cassette/CD	0	0	-	-	-
Premium electronic AM/FM stereo/clock/cassette	0	0	-	-	-
Radio Prep Package	0	0	-	-	-
Safety and Security					
Driver airbag	\$	\$	-	-	-
Passenger airbag	0	0	-	-	-
Belt-Minder system	\$	\$	\$	\$	\$
4-wheel ABS	\$	\$	\$	\$	\$
Performance Features					
4.2L EFI/4-speed automatic O/D	-	-	\$	-	-
5.4L EFI/Electronic 4-speed automatic O/D	\$	-	-	\$	\$
7.3L DI Turbo diesel/Electronic 4-speed Automatic O/D	0	0	-	-	-
6.8					

E-Series Cutaway Commercial/Stripped Chassis Equipment Packages Cont.

Equipment Packages	Cutaway		Stripped Chassis		
	E-350 Super Duty	E-450 Super Duty	E-250 Super Duty	E-350 Super Duty	E-450 Super Duty
Ambulance Prep Package: auxiliary heater/AC Connector Package, limited slip axle ratio dual alternator, 4600 front GAWR, bright swing-out recreational mirrors, driver and passenger airbags, engine block heater, 4 speakers, frame pucks, limited function idle control	0	0	-	-	-
Ambulance Prep Package not required	0	0	\$	\$	\$
Class I Trailer Towing Prep Package	-	0	-	-	-
Motorhome Prep Package: front chrome bumper and grille, aero halogen headlamps, Light and Convenience Group, driver and passenger airbags, RV Seat Prep Package, Heavy-duty Service Package, Class I Trailer Towing Prep Package, engine block heater, Radio Prep Package, speed control/bit steering wheel, 4600 GAWR, frame pucks	0	0	-	-	-
School Bus Body Builder Prep Package: 9600 GVWR (SRW), 10000 GVWR (DRW), banded front door main glass (tinted), high back driver's seat only. Deletes - RH seat, passenger airbag, scuff plate. Requires 7.3L Diesel	0	0	-	-	-
Shuttle Bus Prep Package: front chrome bumper and grille, aero halogen headlamps, Light and Convenience Group, driver and passenger airbags, Motorhome Seat Prep Package, Heavy-duty Service Package, engine block heater, radio delete, 4600 GAWR, frame pucks. Deletes - front hardboard headliner, front dome lamp	0	0	-	-	-
Auxiliary Heater/Air Conditioning Connector Package: front heater connector, front air conditioning connector	0	0	-	-	-
Auxiliary Heater/Air Conditioning Connector Package (with rear A/C control): front heater connector, front A/C connector, rear A/C control, in IP	0	0	-	-	-
Exterior Upgrade Package: front chrome bumper and grille, aero headlamps	0	0	-	-	-
Light and Convenience Group: power locks/windows, courtesy light switches on all doors, warning chime headlights-on audible alert, illuminated entry	0	0	-	-	-
Insulation Package: front acoustical headliner, cloth sun visors	0	0	-	-	-
Interior Upgrade Package: front cloth headliner, high series door trim panels, dual cloth captain's chairs, cloth sun visors, carpet, power locks/windows	0	0	-	-	-
Handling Package: front stabilizer bar, heavy-duty front and rear shock absorbers	\$	\$	\$	\$	\$

E-Series Wagon and Van Specifications

Equipment	Standard
Fuel capacity (gal.)	35.0
Electrical: Battery (amp-hr.)	Standard: 58 Optional: 78/75
Alternator (amp.)	Standard: 115 Optional: Dual 110*
Steering	Standard: Power
Power brakes	
E-150 Van/Wagon, E-250 Van, E-250 Extended Van (with optional 8600# GVWR)	Standard: 4-wheel anti-lock/disc/drum
E-350 Super Duty Van/Wagon, E-350 Super Duty Extended Van/Wagon	Standard: 4-wheel anti-lock/4-wheel disc
Construction	Body-on-frame
Shock absorbers	Standard: Heavy-duty gas-pressurized

*Available on E-350 Super Duty Van/Wagon or E-350 Super Duty Extended Van/Wagon.

E-Series Wagon and Van Specifications Cont.

Series	Front coil/Rear leaf springs (combined rating @ ground)
E-150 Van	Single-stage 3,830 lbs.
E-250 Van	Two-stage 4,265 lbs.*
E-250 Extended Van (with optional 8600# GVWR)	Two-stage 5,545 lbs.*
E-350 Super Duty Regular and Extended Vans	Two-stage 6,195 lbs.
E-150 Wagon	Two-stage 3,830 lbs.
E-350 Super Duty Wagon	Two-stage 5,545 lbs.
E-350 Super Duty Extended Wagon	Two-stage 6,195 lbs.

Note: Front coil springs are computer selected.
*Two-stage 5,345-lb. rear spring and LT225/75R16E all-season tires with 5.4L SEFI V8 engine.

Standard Tires - (Tubeless)

E-150 Van	P235/75R15XL all-season
E-250 Van	LT225/75R16E all-season
E-250 Extended Van (with optional 8600# GVWR)	LT245/75R16E all-season*
E-350 Super Duty Regular and Extended Vans	LT245/75R16E all-season
E-150 Wagon	P235/75R15XL all-season
E-350 Super Duty Wagon	LT225/75R16E all-season
E-350 Super Duty Extended Wagon	LT245/75R16E all-season

LT225/75R16E all-season tires with 5.4L SEFI V8 engine.
Optional tires are available in sizes to match Payload/GVWR requirements. Use adequate tires for loads and type of service. Consult your Ford Dealer.

E-Series Cutaway Specifications

Series	E-350 Super Duty	E-450 Super Duty
Wheelbases (in.)	138/158/176	158/176
GVWRs (lbs.) min./max.	9,600 SRW/11,500 DRW	14,050 DRW
Payloads (lbs.) min./max.	4,900 SRW/6,635 DRW	6,065/8,570
Axles (lbs.)	Front: 4,600 Rear: 7,800 SRW/8,350 DRW	4,600 9,450
Springs - minimum (lbs.) (comb. rating @ ground)	Front: 4,050/3,700 Rear: 7,810	4,600 9,450
Steering	Power	Power
Brakes	Standard: 4-wheel anti-lock/4-wheel disc	4-wheel anti-lock/4-wheel disc
Electrical: Battery (amp-hr.)	Standard: 58 Optional: 78/75	78 78/75
Alternator (amp.)	Standard: 115 Optional: Dual 110	115 Dual 110
Engines	Standard: 5.4L SEFI V8 Optional: 7.3L turbo diesel/6.8L SEFI V10 7.3L turbo diesel	6.8L SEFI V10
Transmissions	Electronic 4-spd. auto OD	Electronic 4-spd. auto OD
Fuel tanks (gal.)	Standard: 37.0	55.0
Tires	Standard: LT245/75R16E (SRW)/LT225/75R16E (DRW)	LT225/75R16E (DRW)

Optional tires to match Payload/GVWR requirements. Use adequate tires for loads and type of service. Consult your dealer.
Wheels (number, type/rim size) Four 8-hole disc 7.0K (SRW) Six 8-hole disc 6.0K (DRW)
Six 8-hole disc 6.0K (DRW)

Note: Load rating represents maximum allowable weight of people, cargo and body equipment and is reduced by weight of optional equipment.
Note: There are weight definitions at the end of the specifications section.

E-Series Commercial Stripped Chassis Specifications

	E-250 Super Duty	E-350 Super Duty	E-450 Super Duty
Wheelbases (in.)	124*	138/158/176	158/176
GVWRs (lbs.) min./max.	8,600	9,600 SRW/11,000 DRW	14,050
Payloads (lbs.) min./max.	5,130	5,535 SRW/11,000 DRW	9,485/9,490
Axles (lbs.)	Front: 4,600 Rear: 6,340	4,600 6,430 SRW/7,800 DRW	4,600 9,450
Springs min. (lbs.) (comb. rating @ ground)	Front: 3,700 Rear: 5,545	3,800 7,810	4,600 9,450
Steering	Power	Power	Power
Brakes	4-wheel anti-lock/4-wheel disc	4-wheel anti-lock/4-wheel disc	4-wheel anti-lock/4-wheel disc
Electrical: Battery (amp-hr.)	std. 58 opt. -	58 -	58 78
Alternator (amp.)	std. 115 opt. -	115 -	115 -
Engines	std. 4.2 SEFI V6 opt. -	5.4L SEFI V8 -	5.4L SEFI V8 6.8L SEFI V10
Transmission	4-spd. auto OD	Electronic 4-spd. auto OD	Electronic 4-spd. auto OD
Fuel tanks	37.0	37.0	55.0

E-Series Commercial Stripped Chassis Specifications Cont.

	E-250 Super Duty	E-350 Super Duty	E-450 Super Duty
Tires	LT225/75R16E (SRW)	LT245/75R16E (SRW)/LT225/75R16E	LT225/75R16E (DRW)
Optional tires are available in sizes to match Payload/GVWR requirements. Use adequate tires for loads and type of service. Consult your Ford Dealer.			
Wheels	Four 8-hole disc 7.0K (SRW)	Four 8-hole disc 7.0K (SRW) Six 8-hole disc 6.0K (DRW)	Six 8-hole disc 6.0K (DRW)

E-Series Van Trailer Towing Applications Maximum Trailer Weights (Lbs.)

Engines	Axle Ratios	GCWR Max.	E-150	E-250	E-250 Extended	E-350 Super Duty	E-350 Super Duty Extended
4.2L SEFI V6	3.55	10,000	5,100	-	-	-	-
	3.73	10,500	-	5,200	5,100	-	-
	4.09	11,000	-	5,700	5,600	-	-
4.6 SEFI V8	3.55	11,500	6,600	-	-	-	-
	3.73	12,000	6,900	-	-	6,500	6,300
5.4 SEFI V8	3.73	13,000	-	7,500	7,400	-	-
	4.10	13,000	-	-	-	7,500	7,300
6.8L SEFI V10	3.73	15,000	-	-	-	9,300	9,200
	4.10	18,500	-	-	-	10,000	10,000
7.3L V8	3.55	16,000	-	-	-	10,000	9,800
	4.10	20,000	-	-	-	10,000	10,000

Note: The combined weight of the towing vehicle (including hitch, passengers and cargo) and the loaded trailer must not exceed the Gross Combination Weight Rating (GCWR). See your Ford dealer for equipment requirements and frontal area restrictions.

E-Series Wagon Trailer Towing Applications Maximum Trailer Weights (Lbs.)

Engines	Axle Ratios	GCWR Max.	E-150	E-350 Super Duty	E-350 Super Duty Extended
4.2L SEFI V6	3.55	10,000	4,700	-	-
	3.73	10,500	-	-	-
	4.09	11,000	-	-	-
4.6 SEFI V8	3.55	11,500	6,100	-	-
	3.73	12,000	6,500	6,000	5,700
5.4 SEFI V8	3.73	13,000	-	-	-
	4.10	13,000	-	7,000	6,700
6.8L SEFI V10	3.73	15,000	-	8,900	8,600
	4.10	18,500	-	10,000	10,000
7.3L V8	3.55	16,000	-	9,500	9,200
	4.10	20,000	-	10,000	10,000

Note: The combined weight of the towing vehicle (including hitch, passengers and cargo) and the loaded trailer must not exceed the Gross Combination Weight Rating (GCWR). See your Ford dealer for equipment requirements and frontal area restrictions.

E-Series Van Payload Package Selector

Series	Wheelbase (in.)	Payload* (lbs.)	GVWR (lbs.)	Tires (min.)
E-150	138	2,055	6,700	P235/75R15XL
	138	2,205	7,000**	P235/75R15XL
	138	1,940	6,700†	P235/75R15XL
E-250	138	2,195	7,200	LT225/75R16D
	138	2,620	7,900**	LT225/75R16E
	138	3,505	8,600	LT245/75R16E
	138	3,390	8,600†	LT245/75R16E
E-250 Extended	138	2,165	7,300	LT225/75R16D
	138	2,090	7,500**	LT225/75R16E
	138	3,380	8,600	LT245/75R16E
	138	3,265	8,600†	LT245/75R16E
E-350 Super Duty	138	4,165	9,500	LT225/75R16E
	138	4,050	9,500†	LT245/75R16E
	138	3,920	9,400	LT225/75R16E
E-350 Super Duty Extended	138	3,655	9,250†	LT245/75R16E

*Maximum available weight of people, cargo and body equipment and is reduced by optional equipment weight.
**Available with Recreational Van only. †Available with Crew Van only. Late availability.

Notes

Windstar Van/Wagon Interior Trim

Exterior Paint Colors	Medium Parchment	Medium Graphite
Windstar Van/Wagon (cloth only)		
Silver Frost Clearcoat Metallic		*
Vibrant White Clearcoat	*	*
Toreador Red Clearcoat Metallic	*	*
Black Clearcoat	*	*

Windstar Wagon LX, SE 3.8L (cloth only on LX, cloth or leather on SE)

Silver Frost Clearcoat Metallic		*
Vibrant White Clearcoat	*	*
Harvest Gold Clearcoat Metallic	*	*
Spruce Green Clearcoat Metallic	*	*
Medium Steel Blue Clearcoat Metallic	*	*
Deep Emerald Green Clearcoat	*	*
Medium Royal Blue Clearcoat Metallic	*	*
Toreador Red Clearcoat Metallic	*	*
Cabernet Red Clearcoat Metallic	*	*
Chestnut Clearcoat Metallic	*	*
Black Clearcoat	*	*

Windstar Wagon SEL* 3.8L (leather only)

Silver Frost Clearcoat Metallic		*
Vibrant White Clearcoat	*	*
Harvest Gold Clearcoat Metallic	*	*
Spruce Green Clearcoat Metallic	*	*
Medium Steel Blue Clearcoat Metallic	*	*
Deep Emerald Green Clearcoat	*	*
Medium Royal Blue Clearcoat Metallic	*	*
Cabernet Red Clearcoat Metallic	*	*
Chestnut Clearcoat Metallic	*	*
Black Clearcoat	*	*

*See your dealer for two-tone color combinations.

Windstar Van/Wagon Features & Options

Exterior Features

	Van	Windstar	LX	SE	SEL
3-door	\$	\$	\$	-	-
Driver-side sliding door	-	0	0	\$	\$
Passenger-side power sliding door (requires full-size console, 4-door and Comfort Group on LX)	-	-	0	0	-
Driver-side/passenger-side power sliding doors	-	-	0	\$	\$
Privacy Glass	-	-	0	\$	\$
Roof rack	-	-	0	\$	\$
Electric remote mirrors	-	\$	\$	-	-
Electric remote heated mirrors (part of Family Security Package on LX)	-	-	0	\$	\$
Limo-style front doors and RH manual sliding doors	\$	-	-	-	-
Solar tinted glass	\$	\$	\$	\$	\$
Driver and passenger manual mirrors	\$	-	-	-	-

Interior Features

Reverse Sensing System (4-door only)	-	-	0	0	0
Floor console	-	-	0	0	0
Two cupholders in center stack of instrument panel with ashtray	\$	-	-	-	-
Floor mats	-	0	0	\$	\$
Rear cargo rubber floor mats	\$	-	-	-	-
Leather-wrapped steering wheel	-	-	-	\$	\$
Deluxe steering wheel with center blow horn	\$	\$	\$	-	-
Illuminated sun visors	-	-	-	\$	\$
Color-coordinated sun visor with covered vanity mirrors	\$	\$	\$	-	-
Powerpoints, two front row and one cargo area	-	\$	\$	\$	\$
Powerpoints, two front row	\$	-	-	-	-
Front heater/defroster	\$	\$	\$	\$	\$
Electric rear window defroster	0*	\$	\$	\$	\$
Manual air conditioning	0*	\$	\$	\$	\$
Front dome and rear cargo lights	\$	\$	\$	\$	\$
Manual roll down windows	\$	-	-	-	-
Black interior side panels not installed (covers base of window line to floor)	\$	-	-	-	-
Front passenger carpeting	\$	-	-	-	-
*"Sleeping Baby Mode" light setting (requires Remote Keyless Entry System on Windstar Wagon)	-	0	\$	\$	\$

Windstar Van/Wagon Features & Options Cont.

Equipment Groups

	Wagon				
	Van	Windstar	LX	SE	SEL
Power Convenience Group: power mirrors, door locks, and windows; illuminated switches (front doors); accessory delay; autolock	0	\$	\$	\$	\$
Comfort Group: auxiliary climate control system; Privacy Glass; roof rack; mini overhead console (4-door LX only)	-	-	0	\$	\$
Electronics Group: message center; electrochromic mirror; autolamp; trainable transmitter	-	-	-	0	\$
Light Visibility Group: 2nd-row reading lamps, 3rd-row reading lamps (SEL only), glove box lamp, front-row floor lamps, front map lamps and front door panel courtesy lamps (SE and SEL only), 8-pillar lamps (included with Remote Keyless Entry System on Windstar)	-	0	\$	\$	\$
Interior Convenience Group: center stack console cover; rear cargo net	-	-	-	\$	\$
Full overhead console (requires 4-door and Comfort Group on LX): conversation mirror; coin holder; sunglasses holder; garage door opener holder; reading lamp; dome lamp	-	-	0	\$	\$
Van Value Group (requires 3.8L engine): electric rear window defroster, manual air conditioning, Power Convenience Group	0	-	-	-	-

Seating

6-way power driver's seat (requires Comfort Group and 4-door on LX)	-	-	0	E	E
Leather-trim seats (includes power driver and passenger bucket seat with lumbar support)	-	-	-	0	\$
6-way power passenger seat (requires leather-trim seats)	-	-	-	0	\$
Enhanced Seating Group: 2nd/3rd-row adjustable seat tracks, seat recline, bench seat rollers; map pockets and grab handles on back of 1st-row seats, 2nd-row seat-mounted cupholders	-	0	\$	\$	\$
Front seats: dual high-back premium cloth buckets with integral head restraints, fore/aft manual adjustment, reclining adjustment, inboard armrests	\$	\$	\$	-	-
Front seats: dual low-back premium cloth buckets with adjustable head restraints, 6-way power driver's seat, map pockets and grab handles on seat backs and inboard armrests	-	-	-	\$	-
Rear seats: 2nd-row 2-passenger and 3rd-row 3-passenger bench seat both with forward folding seat backs and outboard head restraints	-	\$	\$	-	-
Rear seats: 2nd-row dual captain's chairs with recline and adjustable tracks, 3rd-row bench with recline, adjustable track and rollers (requires Comfort Group on LX)	-	-	0	\$	\$
Rear seats: 2nd- and 3rd-row leather-trim seats	-	-	-	0	\$
3rd- to 2nd-row seat flexibility	-	\$	\$	\$	\$
2nd-row bench seat indexing easy-entry feature	-	\$	\$	-	-

Audio/Video

AM/FM stereo	\$	\$	-	-	-
AM/FM stereo/cassette	0	0	\$	\$	-
Premium AM/FM stereo/cassette/single CD includes Personal Audio System and rear seat controls (requires overhead console on 4-door LX)	-	-	0	0	\$
CD changer prep	-	-	0	0	0
Vision Rear Seat Entertainment System with headphones (late availability)	-	-	-	0	0

Safety and Security Features

Second Generation driver and front passenger airbags	\$	\$	\$	\$	\$
Front-row side airbags	0	0	0	0	0
Universal child safety seat and leather strap anchors (UCSSS/SOFIX)	-	\$	\$	\$	\$
4-wheel anti-lock brake system	\$	\$	\$	\$	\$
SecurILock™ Passive Anti-Theft System	\$	\$	\$	\$	\$
Family Security Package: self-sealing tires (LX and SE, 15" wheels only); traction control; perimeter anti-theft, heated mirrors (standard on SE, SEL)	-	-	0	0	0
3-point lap/shoulder belts with 1st- and 2nd-row D-ring height adjusters	\$	\$	\$	\$	\$
Cornering lamps	-	-	-	\$	\$
Perimeter anti-theft (part of Family Security Package)	-	-	0	0	0
Childproof sliding door locks	\$	\$	\$	\$	\$
Remote Keyless Entry System (includes Light Visibility Group and "Sleeping Baby Mode" light setting on Windstar Wagon)	-	0	\$	\$	\$

Windstar Van/Wagon Features & Options

Performance Features

	Wagon				
	Van	Windstar	LX	SE	SEL
3.0-liter V6 engine with electronic 4-speed automatic overdrive transaxle, Low Emissions Vehicle	\$	\$	-	-	-
3.8-liter V6 engine with electronic 4-speed automatic overdrive transaxle, Low Emissions Vehicle	0	0	E	\$	\$
Speed control/tilt steering wheel	0	0	\$	\$	\$
Trailer Tow Package (Class I): in-vehicle wiring harness, throw-in jumper wiring harness, module	0	0	0	0	0
Trailer Tow Package (Class II): auxiliary transmission cooler, heavy-duty battery, trailer wiring harness and module, full-size spare tire, high-speed ambient temperature package module	-	-	0	0	0
Commercial Spring Package: P215/70R15SL tires, fixed 2,800 lbs. rear GAWR, fixed 2,809 lbs. front GAWR, GVWR of 5,600.	0	-	-	-	-
Engine block heater	0	0	0	0	0
Full-size spare tire	\$	-	-	\$	\$

\$ = Standard 0 = Optional E = Equipment at no charge

*Available on Power and Convenience Group only.

Windstar Van/Wagon Specifications & Dimensions in.

Cargo Van Specifications (in.)

	Windstar Van
Wheelbase	120.7
Overall length	200.9
Overall width	75.5
Turn diameter	40.3
Base curb weight (lbs.)	3,719
Payload (lbs.)	1,800
GVWR (lbs.)	5,520
Cargo length	93
Cargo width	65.2
Cargo height	46.0
Cargo volume (cu. ft.)	145

Windstar Van Compared to Windstar Wagon (in.)

	Van	Wagon
Width between wheelhouse	49.6	48.4
Rear opening height	40.3	40.2
Load floor height - empty	25.3	23.5
Vehicle height - empty	68.5	67.8
Liftgate with at belt	52.8	50.0
Maximum payload (lbs.)	1,800	1,200
Maximum towing (lbs)	2,000	3,500
Cargo volume (cu. ft.)	145	139.4*
Passenger capacity	2	7
Fuel capacity (U.S. gallons)	26	26

*With rear seats removed.

Power & Economy

	3.0L Engine	3.8L Engine
Horsepower	150	200
Torque	186	240

Fuel Economy mi/gal*

City	17	18**
Highway	23	23

*2000 EPA estimates. See your Ford Dealer for latest fuel economy information. **With rear seats removed. Note: These are weight definitions at the end of the specifications section.

Excursion Color and Trim

Exterior Paint Colors	Medium Graphite	Medium Parchment	Dark Denim
-----------------------	-----------------	------------------	------------

XLT (available in cloth and leather trim)

Arizona Beige Clearcoat Metallic	*	*	*
Chestnut Clearcoat Metallic	*	*	*
Toreador Red Clearcoat Metallic	*	*	*
Dark Green Satin Clearcoat Metallic	*	*	*
Deep Wedgewood Blue Clearcoat Metallic	*	*	*
Medium Steel Blue Clearcoat Metallic	*	*	*
Black Clearcoat	*	*	*
Silver Clearcoat Metallic	*	*	*
Oxford White Clearcoat	*	*	*

LIMITED (available in leather trim only)

Chestnut Clearcoat Metallic	*	*	*
Toreador Red Clearcoat Metallic	*	*	*
Dark Green Satin Clearcoat Metallic	*	*	*
Deep Wedgewood Blue Clearcoat Metallic	*	*	*
Estate Green Clearcoat Metallic	*	*	*
Black Clearcoat	*	*	*
Oxford White Clearcoat	*	*	*

Excursion Features and Options

Exterior Features

	XLT	Limited
Front bumper		
Chrome with Medium Platinum valance	\$	-
Chrome with Arizona Beige valance	-	\$
Rear step bumper		
Black step pad	\$	-
Arizona Beige step pad	-	\$
Moldings		
Color-keyed bodyside moldings	\$	-
Cladding with wheelip moldings in Arizona Beige	-	\$
Color-keyed door handles with cylinder lock	\$	\$
Privacy Glass	\$	\$
Gray insert grille with Ford Oval	\$	\$
Aero halogen headlamps	\$	\$
Keyless entry keypad	\$	\$
Black power mirrors, non-bright, low-gloss, heated	\$	\$
Telescoping power/heated trailer tow mirror	0	0
Power rear quarter windows	-*	\$
Rear Tri-Panel™ Doors, top half liftgate and two lower cargo doors, no center pillar	\$	\$
Roof rack	\$	\$
Reverse Sensing System	0	0
Running boards		
Non-illuminated running board (Black)	\$	-
Illuminated running board (Arizona Beige)	-	\$
Illuminated running board (Black)	-	-
Front tow hooks	\$	\$
Wheel trim		
Styled steel wheel with wheel cover	\$	-
Premium aluminum wheel	-	\$
Chromed styled aluminum wheel	0	-
Wipers		
Rear intermittent/washer/defroster	\$	\$
Front intermittent	\$	-
Front speed-dependent, intermittent	-	\$

Interior Features

Door trim		
Soft armrest, padded upper vinyl insert, dual map pockets, carpet on lower molded in speaker grille	\$	-
Soft armrest, padded upper vinyl insert, dual map pockets, carpet on lower molded in speaker grille with upper woodgrain insert	-	\$
Floor console: four cupholders, storage bin, rear radio controls, rear powerpoints and woodgrain trim	-	\$
Manual front and rear air conditioning	\$	\$
1st- and 2nd-row assist handles	\$	\$
Cargo net with tie downs	\$	\$
Color-keyed carpet with 1st- and 2nd-row mats	\$	\$
2nd-row and cargo area coat hooks	\$	\$
6 cupholders on XLT, 10 cupholders on Limited	\$	\$
Color-keyed instrument panel with side window demisters	\$	\$
Instrumentation: analog with voltmeter, oil pressure, water temperature, speedometer/odometer and tachometer	\$	\$
Lights: underhood, glove box, front dome/map, overhead rear cargo, front door courtesy lights and 2nd- and 3rd-row map lights	\$	\$

Excursion Features and Options Cont.

Interior Features Cont.	XLT	Limited
Overhead console		
Mid-vehicle console	\$	\$
with front auxiliary air conditioning control	\$	-
with trip computer and power rear quarter window controls	-*	\$
Power windows/locks (with childproof rear doors)	\$	\$
Powerpoints; 4 on XLT and 5 on Limited	\$	\$
Electrochromic rearview mirror	\$	\$
Rear window defroster	\$	\$
Color-keyed lap/shoulder safety belts and height-adjustable D-rings in 1st- and 2nd-row	\$	\$

Seating Arrangements

Heated seats	-	0
40/20/40 split bench cloth with driver's side manual lumbar	\$	-
Captain's chairs in leather trim with 6-way driver power	0	\$
Head restraints on outboard positions (1st/2nd row only)	\$	\$
2nd-row 60/40 split bench with center armrest cupholders (leather trimmed on Limited)	\$	\$
3rd-row removable cloth fold-flat bench (leather trimmed on Limited)	\$	\$

Audio

Premium AM/FM Dual Media 80 watt with amp, cassette and single CD	\$	\$
Rear seat audio controls	-*	\$
6-disc CD changer	0	0

Safety and Security Features

SecuriLock™ Passive Anti-Theft System	\$	\$
Second Generation driver and passenger airbags	\$	\$
4-wheel anti-lock brakes	\$	\$
Remote Keyless Entry System with two key fobs	\$	\$
Belt-Minder™ system	\$	\$

Performance Features

5.4 L V8/auto transmission (std. on 4x2, opt. on 4x4)	\$	\$
6.8L V10/auto transmission (std. on 4x4, opt. on 4x2)	0	0
7.3L V8 diesel/auto transmission	0	0
Limited slip axle	0	0
Transfer case skid plate	0	0
HD Trailer Towing Package, 7-pin wire harness, trailer brake wiring kit, trailer tow guide	\$	\$

Tires

LT265/75R16D BSW all-season (5)	\$	-
LT265/75R16D OWL all-season (5)	0	\$
LT265/75R16D OWL all-terrain (5)	0	0
Steel spare wheel with matching road tire	\$	\$

Equipment Groups

Comfort and Convenience Group: trip computer, illuminated running boards, power driver's seat, captain's chair with center console and rear radio controls, power rear quarter vent windows, paint stripe	0	\$
Special Service Group: argent steel wheels with black center, cloth full bench, front A/C, manual black mirrors, std. rearview mirror, vinyl flooring, Delete: auxiliary A/C, 3rd-row seat, bodyside molding, cargo net, floor mat, overhead console, roof rack crossmembers	0	-

*Available on XLT with Comfort and Convenience Group.

\$ = Standard 0 = Optional

Excursion Dimensions

Exterior (in.)	4x2	4x4
Overall length	226.7	226.7
Overall width	80.0	80.0
Overall height at curb	77.4	80.4
Wheelbase	137.1	137.1

Interior (in.)

Front Row		
Headroom	41.0	41.0
Shoulder room	68.3	68.3
Maximum legroom	42.3	42.3

Second Row

Headroom	41.1	41.1
Maximum shoulder room	67.0	67.0
Maximum legroom	40.5	40.5

Excursion Dimensions Cont.

Third Row	4x2	4x4
Headroom	38.6	38.6
Maximum shoulder room	64.9	64.9
Maximum legroom	39.0	39.0

Cargo Volumes (cu. ft.)*

Behind first row**	146.4	146.4
Behind second row†	100.7	100.7
Behind third row	48.0	48.0

*Determined using 1998 SAE J1100 Handbook. **With second row folded flat and third row removed. †With third row removed.

Excursion Engine Data

	5.4L SEFI V8*		6.8L SEFI V10**		7.3L V8 Turbo Diesel†	
	4x2	4x4	4x2	4x4	4x2	4x4
GVWR (lbs.)	8,600	8,900	8,600	8,900	8,900	9,200
Base curb weight (lbs.)	6,650	7,087	6,734	7,190	7,237	7,688
Maximum payload capacity (lbs.)	1,950	1,810	1,865	1,710	1,660	1,510
HP @ rpm (SAE net)	255@4,500		310@4,250		235@2,600	
Torque @ rpm (SAE net)	350@2,500		425@3,250		500@1,800	
Max. torque @ 1,500 rpm	296		377		425	

Excursion offers workhorse engines that can tow up to 10,000 pounds. Just in case you want to take your summer home for a ride.

*Standard on 4x2, optional on 4x4. **Standard on 4x4, optional on 4x2. †Optional on all models. Note: There are weight definitions at the end of the specifications section.

Excursion Maximum Trailer Towing Weights

	Axle Ratio	GCWR (lbs.)	4x2	4x4
5.4L SEFI V8	3.73	13,000	6,200	-
	4.10 LS	14,500	-	7,200
6.8L SEFI V10	3.73	17,000	10,000	9,600
	4.30 LS	18,000	10,000	10,000
7.3L V8 Turbo Diesel	3.73	18,000	10,000	10,000
	3.73 LS	18,000	10,000	10,000

The combined weight of the towing vehicle (including hitch, passengers and cargo) and the loaded trailer must not exceed the Gross Combination Weight Rating (GCWR). Standard Heavy-Duty Trailer Towing Package content: 7-pin trailer wiring harness and connector, trailer brake wiring kit and Class IV frame-mounted hitch receiver. In order to achieve maximum towing weights, refer to the Ford RV Trailer Towing Guide for specific trailer towing limits and corresponding required equipment. See your Ford Dealer for equipment requirements and frontal area restrictions.

Federal Regulations

Federal regulations such as those issued by the National Highway Traffic Safety Administration, the Environmental Protection Agency or the Federal Highway Administration, or issued pursuant to the Occupational Safety and Health Administration (OSHA) and/or state and local laws and regulations, may require additional equipment for the particular use you intend for the vehicle. It is the buyer's responsibility to determine the applicability of such laws and regulations to the buyer's intended use for the vehicle and to arrange for the installation of required equipment. Your dealer has information about the availability of many items of equipment which can be ordered for the vehicle.

About Aftermarket Products

Many items shown on vehicles in this publication are available through retail organizations and establishments not connected with Ford Motor Company. Availability, price, quality and durability of these items rest solely with the respective manufacturers and their sales organizations; Ford assumes no responsibility for their use.

Product Changes/Options Availability

Following publication of the catalog, certain changes in standard equipment, options, prices and the like, or product delays, may have occurred which would not be included in these pages. Your Ford Dealer is your best source for up-to-date information. Ford Division reserves the right to change product specifications at any time without incurring obligations. Options shown or described are available at extra cost and may be offered only in combination with other options or subject to additional ordering requirements or limitations.

Quality Care

The people who know your vehicle best. The parts designed for it. A service department that understands your needs and respects your time. That's what Quality Care is all about.

Roadside Assistance

Every new Ford includes the assurance of a 24-hour emergency Roadside Assistance Program provided during the duration of the vehicle's limited warranty period. Ask your Ford Dealer for complete details on this program which includes such services as fuel delivery, tire change, jump start, or even help when you're locked out of your vehicle.

New Vehicle Limited Warranty

Under the New Vehicle Limited Warranty, you receive bumper-to-bumper coverage for 3 years/36,000 miles (2 years/unlimited miles with Super Duty F-650/750 only) with no deductible. You also receive corrosion perforation coverage for 5 years (3 years with Super Duty F-650/750 only) with unlimited mileage and no deductible. Ask your Ford Dealer for a copy of the warranty.

Weight Definitions

Payload is the combined, maximum allowable weight of cargo and passengers that the truck is designed to carry. It is the Gross Vehicle Weight Rating minus the Base Curb Weight (the weight of the vehicle including a full tank of fuel and all standard equipment).

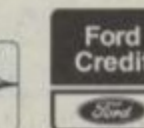
Gross Vehicle Weight Rating (GVWR) is the maximum allowable weight of the fully loaded vehicle (including passengers and cargo).

Gross Vehicle Axle Weight Rating (GAWR) is the maximum weight to be carried by a single axle (front or rear).

Gross Combined Weight Rating (GCWR) is the maximum allowable weight of the towing vehicle and the loaded trailer – including all cargo and passengers – that the vehicle can handle without risking damage.

fordforce
COMMUNITY ACTION TEAM

Bettering the communities in which we do business is the goal of the Ford Force. We're organized, mobilized and coming to a community near you. Join us.

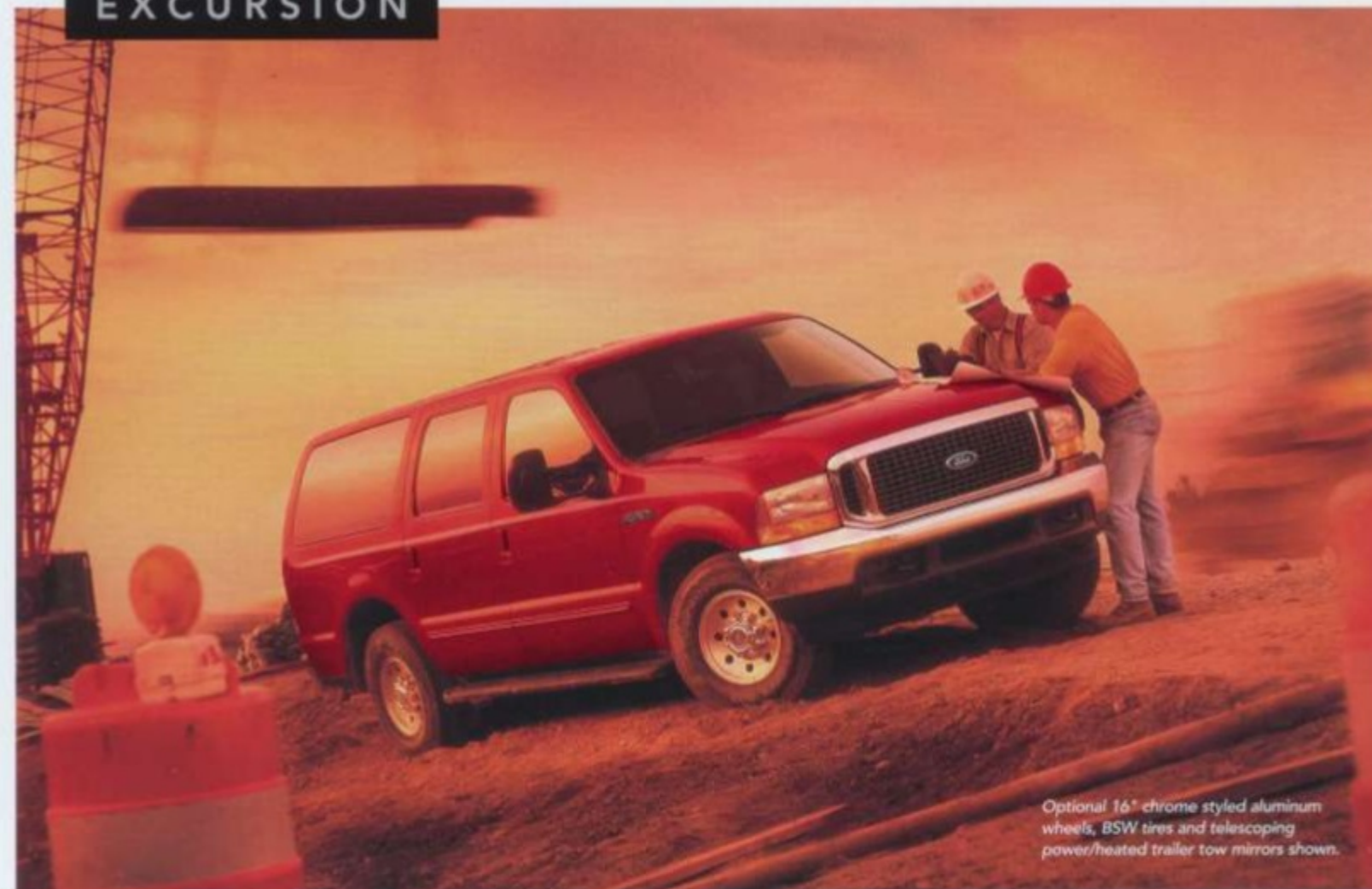


Visit our website at www.fordvehicles.com or www.fleet.ford.com



Note: Paint colors vary by vehicle line. Refer to specification sections for the availability of Clearcoat finish, Metallic paint and color/trim combinations.

EXCURSION



Optional 16" chrome styled aluminum wheels, BSW tires and telescoping power/heated trailer tow mirrors shown.

The new Ford Excursion is a tough multi-purpose work vehicle. With some of the most flexible seating available in an SUV, Excursion holds up to nine adults with enough room left over for lots of their gear. Remove the third-row bench seat and fold the second-row 60/40 bench seat flat for a cavernous cargo area. Rear Tri-Panel™ Doors have no pillar to block the view, and they swing open

nearly 180°, providing virtually unrestricted access. You can choose from a trio of

Excursion is built on the same tough chassis as Super Duty F-Series.

heavyweight engines (the 6.8L V10 and the 7.3L V8 can tow up to 10,000 pounds when properly equipped). And ordering the *Special Services Group* for Excursion helps prepare the vehicle for commercial duty applications.



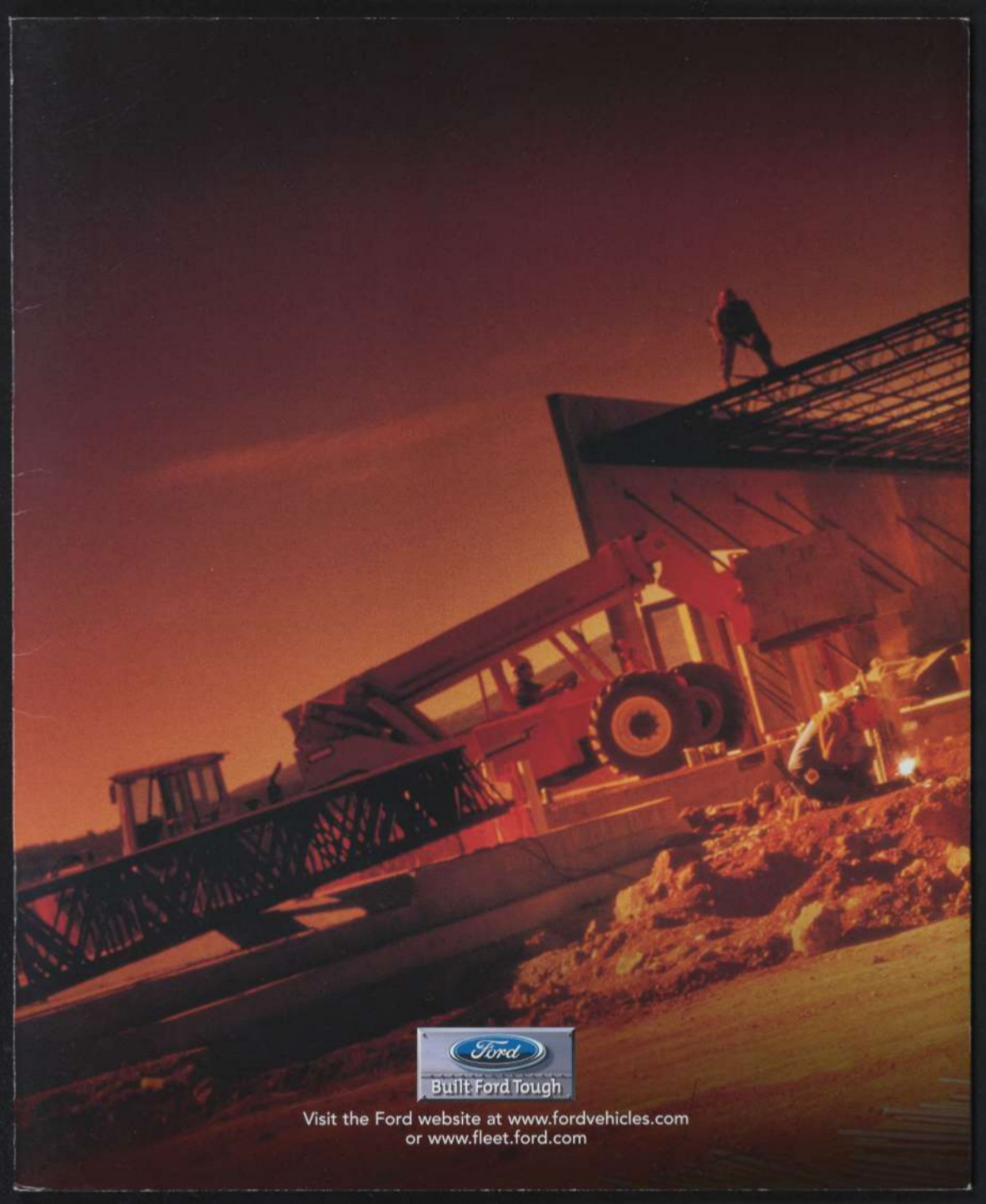
Excursion XLT with optional leather upholstery provides plenty of room for the crew. (Optional Comfort and Convenience Group shown.)



A Class IV trailer hitch is standard with Excursion.



Rear Tri-Panel Doors provide convenient access to the rear area.



Visit the Ford website at www.fordvehicles.com
or www.fleet.ford.com