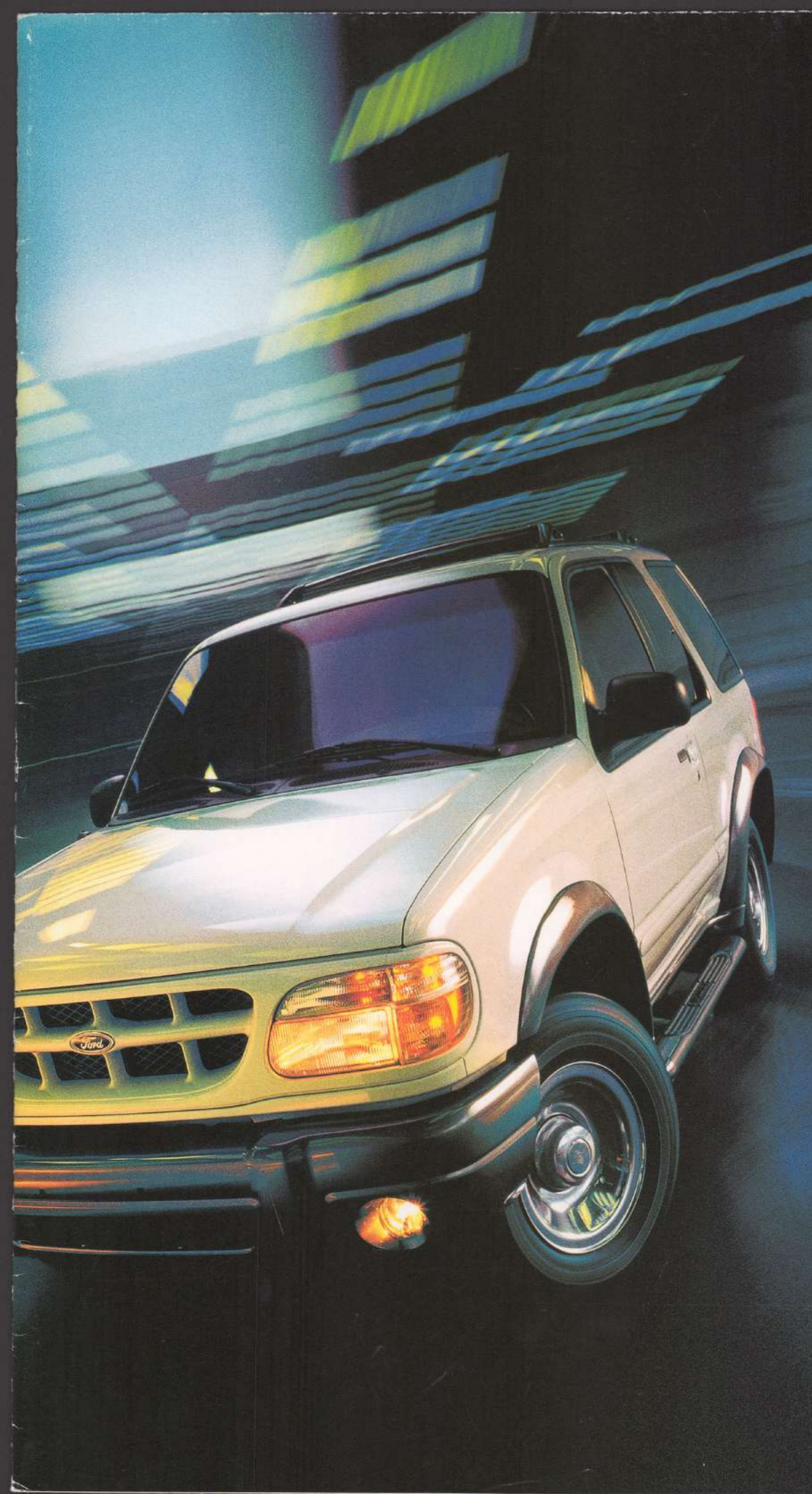


EXPLORER



2000 EXPLORER SPORT





Sporty looks are one thing. Sporty performance is another. As a gesture of conciliation, Explorer Sport offers both. The standard 4.0-liter overhead-valve V6 creates 160 horsepower at 4,200 rpm. Opt for the available 4.0-liter single-overhead-cam version and get a full 210 at 5,250 rpm. Either way, the idea of heading for the hills gets a lot less daunting. Deep-dish cast aluminum design wheels and all-terrain tires thrive on dirt trails or cobblestones, depending on the activity du jour.

EXPLORER Sport

- Power windows/locks/mirrors
- Air conditioning
- Electronic AM/FM stereo/clock/cassette
- 15" deep-dish cast aluminum wheels
- SecuriLock™ Passive Anti-Theft System

EXPLORER Sport (with optional Premium Sport Group)

- High-gloss platinum wheelcap moldings and front/rear bumpers
- Side step bars
- Fog lamps
- Outlined white letter, all-terrain tires
- Optional Comfort and Convenience Group



EXPLORER Sport



EXPLORER Sport
(with optional Premium Sport Group)



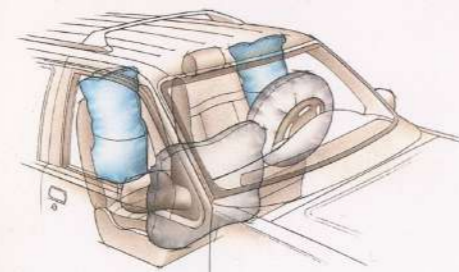
15" deep-dish
cast aluminum wheel
(standard)



15" chrome
steel wheel
(included with Premium
Sport Group [4x2])

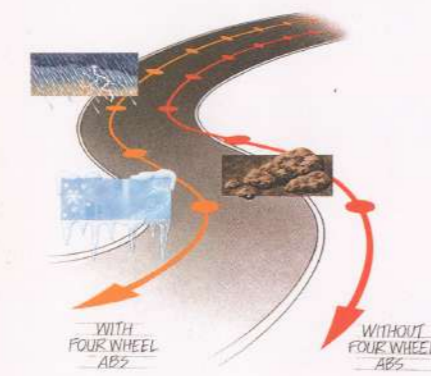


16" machined
aluminum wheel
(included with Premium
Sport Group [4x4])



Available front seat side-impact airbags* help increase your perimeter of protection and enhance your feeling of security on the road.**

*Always wear your safety belt and secure children in rear seat.
**Airbags inflated for illustrative purposes only.

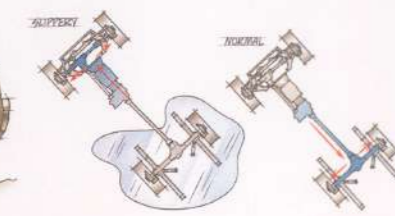


The standard anti-lock braking system helps you with steering control while you're braking under most conditions, even on wet or slippery surfaces.

When you take to the road in an Explorer, your belongings never take a back seat, figuratively speaking. The large cargo area is versatile and decidedly indiscriminant, transporting skiing gear or sizeable table lamps with equal enthusiasm. It's all about making your life just a little bit easier.



Explorer Sport 4x4 includes the convenience of Control-Trac, which can automatically vary the wheel torque depending on driving conditions. It can sense wheel slippage and transmit torque to the set of



wheels with better traction, either front or rear, to take advantage of their better grip. Control-Trac settings are controlled by the driver. For details on how this system operates, consult your Explorer Owner Guide.



Medium Prairie Tan
Leather Trim



Medium Graphite
Leather Trim



Dark Graphite
Cloth

Standard Equipment

Exterior Features

Grille painted body color insert with diamond mesh
Solar tinted glass
Privacy Glass in rear quarters, rear window
Flip-out rear quarter windows
Liftgate with flip-up glass
Luggage rack
Electric remote LH/RH mirrors
Color-keyed bodyside and wheelip moldings
High-mount stop lamp (rear)
Front wipers, speed-sensitive, dual, intermittent
Rear intermittent wiper/washer/defroster

Interior Features

Air conditioning, manual
Color-keyed carpeting
Illuminated entry
Instrument panel with four gauge cluster with warning lights, trip odometer and tachometer
Power lock/unlock liftgate button
Power Equipment Group with power windows/door locks, illuminated controls, "one-touch-down" feature for driver's window, electric mirrors, accessory delay and interior lock/unlock button in cargo area
Powerpoint (12 volt)

Engines

4.0L OHV/SEFI V6 5-speed manual O/D

Seating Arrangement

Cloth captain's chairs with floor console

Audio

AM/FM stereo/cassette

Safety/Security

Second Generation driver and front passenger airbag supplemental restraint system
Adjustable-height outboard front safety belts
Illuminated entry system
SecuriLock™ Passive Anti-Theft System
Side door intrusion beams
4-wheel disc anti-lock braking system (ABS)

Wheels/Tires

Deep-dish cast aluminum (4)
P235/75R15 OWL A/T (4)

Note: Spare wheel is steel, and spare tire is black sidewall (BSW).



Available fog lamps help improve visibility in bad weather while enhancing the sporty look.



Enjoy the outside inside with the available power moonroof. Open it completely with just the touch of a button or simply tilt it up.

Optional Equipment

Exterior Features

Wheelip moldings (included with optional Premium Sport Group)
Side step bars (included with optional Premium Sport Group)

Engines

4.0L OHV/SEFI V6 5-speed automatic O/D*
4.0L SOHC/SEFI V6 5-speed automatic O/D*
*Equipment at no charge.

Seating Arrangements

Cloth sport buckets with 6-way power driver's seat, manual driver/passenger lumbar support (with hi-series floor console)
Sport buckets with leather seating surfaces, 6-way power driver/passenger seat (with hi-series floor console), manual driver/passenger lumbar support

Audio

AM/FM stereo/single CD (24 watt) (included with Comfort Group)
Premium AM/FM stereo/cassette/single CD/Premium Sound (80 watts)
MACH® Audio System with stereo/cassette/single CD (290 watt, peak power, requires Comfort Group)
6-disc CD changer (requires Comfort Group)

Safety/Security

Front side airbags
Remote Keyless Entry System (with two key fobs) (included with Convenience Group only)

Option Groups

Convenience Group includes cargo cover, Remote Keyless Entry System, speed control/tilt leather-wrapped steering wheel and floor mats
Comfort Group includes cloth sport bucket seats with power driver seat, keypad/autolock, AM/FM stereo/cassette/single CD/radio, hi-series floor console, electrochromic mirror/autolamp, puddle lamps, illuminated LH/RH visor vanity mirrors and overhead console (requires Convenience Group)
Premium Sport Group includes platinum wheelip moldings, fog lamps, platinum front and rear bumpers, side step bars, 15" chrome steel (4x2) or 16" machined aluminum wheels (4x4), P235 OWL all-terrain tires (4x2), P255 OWL all-terrain tires (4x4), front tow hook (requires Convenience Group)

Product Changes and Options Availability

Following publication of the catalog, certain changes in standard equipment, options and the like, or product delays, may have occurred which would not be included in these pages. Your Ford Dealer is your best source for up-to-date information. Ford Division reserves the right to change product specifications at any time without incurring obligations.



This "flip glass" feature lets you open the entire liftgate or just the upper portion. It's the only "half measure" you'll find in Explorer.

Miscellaneous Options

Power moonroof
Trailer Tow Prep Package
Engine block heater
License plate bracket
Side step bars (included with Premium Sport Group)
Skid Plate Package (4x4 only)

Drivetrain

Specifications: 4x2 or 4x4

Engine type: 4.0-liter OHV V6; optional 4.0-liter SOHC V6
Induction system: Multi-port electronic fuel injection with EEC-V computer
Transmissions: Std. 5-speed manual OD; opt. 5-speed automatic OD (4.0L SOHC V6)
Battery: 72 AH; 650 CCA maintenance-free with battery saver
Alternator: 70/115 amps
Security: SecuriLock™ Passive Anti-Theft System
Frame: Ladder-type, single channel with six crossmembers
Front suspension: Independent SLA, torsion bar (computer-selected), gas-pressurized shock absorbers, stabilizer bar
Rear suspension: Semi-floating-type rear axle (limited-slip differential optional), 2-stage variable-rate leaf springs (computer-selected), gas-pressurized shock absorbers, stabilizer bar
Steering: Power-assisted rack-and-pinion, 17:1 ratio
Brakes: 4-wheel power disc with 4-wheel anti-lock system
Fuel tank: 17.5 gallons
Wheels (type/size): 5-hole disc/15"x7.0 (16" machined with Premium Sport Group [4x4], 15" chrome steel with Premium Sport Group [4x2], deep-dish cast aluminum standard with Sport)
Tires: P235/75R15SL OWL all-terrain (Sport, Premium Sport Group [4x2]); Premium Sport Group (4x4) includes P255/70R16 OWL all-terrain



The SecuriLock™ Passive Anti-Theft System cleverly "interrogates" the ignition key, preventing the engine from being started by potential thieves.



Whether you're cruising the boulevard or hitting the back roads, you don't want to leave your comfort back home. Explorer Sport seating, in cloth or available leather trim, is crafted from materials of exceptional quality and designed to help insulate you from rough road treatment.

Harvest Gold
Clearcoat Metallic



Toreador Red
Clearcoat Metallic



Medium Wedgwood Blue
Clearcoat Metallic



Deep Wedgwood Blue
Clearcoat Metallic



Tropic Green
Clearcoat Metallic



Black
Clearcoat



Oxford White
Clearcoat



Exterior Paint Colors

SPORT (available in leather or cloth)

Harvest Gold Clearcoat Metallic

Toreador Red Clearcoat Metallic

Medium Wedgwood Blue Clearcoat Metallic

Deep Wedgwood Blue Clearcoat Metallic

Tropic Green Clearcoat Metallic

Black Clearcoat

Oxford White Clearcoat

Interior Trim

Dark Graphite	Medium Graphite	Medium Prairie Tan
●		●
●	●	●
●	●	●
●	●	●
●	●	●
●	●	●

EXPLORER Dealer-Installed Accessories



Heavy-Duty Cargo Liner helps protect the rear area.



Bike Rack and removable roof rack accessories allow you to securely fasten the bike for easier and safer transport.



Ski Rack comes with a wide range of capacity (up to six pairs of skis or four snowboards). Padded clamp assemblies help guard against damage.



Aero Hood Deflector helps protect the hood from insects, dirt and other debris.



Class III Trailer Hitch. Designed for gross trailer load capacity of 5000 lbs., tongue weight rated at 500 lbs.



Rear Air Deflector is aerodynamically styled and helps keep the rear window free of dirt while adding a stylish touch.

"Tread Lightly!" is an educational program designed to increase the awareness of land-use regulations and responsibilities in our wilderness areas. Ford joins the U.S. Forest Service and the Bureau of Land Management in encouraging you to preserve our national forests and other public and private lands by "treading lightly."

treadlightly!



Roadside Assistance

Every new Ford includes the assurance of a 24-hour emergency Roadside Assistance Program provided during the 3-year/36,000-mile limited warranty period. Ask your Ford Dealer for complete details on this program which includes such services as fuel delivery, tire change, jump start, or even help when you're locked out of your vehicle.

New Vehicle Limited Warranty

Under the New Vehicle Limited Warranty, you receive bumper-to-bumper coverage for 3 years/36,000 miles with no deductible. You also receive corrosion perforation coverage for five years with unlimited mileage and no deductible. Ask your Ford Dealer for a copy of the warranty.

Quality Care

The people who know your vehicle best. The parts designed for it. A service department that understands your needs and respects your time. That's what Quality Care is all about.

fordforce
COMMUNITY ACTION TEAM

Bettering the communities in which we do business is the goal of the Ford Force. We're organized, mobilized and coming to a community near you. Join us.



Visit our website at www.fordvehicles.com