



2000 ZX2





The best accident avoidance tool is the driver. Active participation is the whole idea. ZX2 is built to keep drivers actively involved. For those split-second decisions that can make a difference. Maybe you didn't realize having all that fun was such a service.

ESCORT ZX2 Standard Equipment

- 130-horsepower 16-valve, 2.0-liter Zetec
- 15" aluminum wheels
- Rear spoiler
- AM/FM stereo cassette
- Rear window defroster
- Four-passenger seating
- 60/40 split/fold rear seating
- Dual visor mirrors
- Interior trunk release
- Tachometer
- Child safety seat upper tether anchors
- Power mirrors



ZX2 Series



14" chrome
P185/65R14 BSW
(optional)



15" aluminum (Swirl)
P185/60T15 BSW
(standard)



Style doesn't end with the exterior. Inside, there's plenty of room for expression. Not to mention your friends. Look what happens when you give convention the boot.

Convenience equipment like power locks and windows, tilt steering wheel, speed control and the Premium Sound system with trunk-mounted 6-CD changer is always an option.

The standard rear trunk lid release, located on driver's side lower front panel, allows you to open your trunk with the push of a button. There's also a 60/40 split/fold rear seat to turn your people hauler into a cargo hauler.



Optional 80-watt AM/FM stereo/cassette/Premium Sound with trunk-mounted 6-disc compact changer.



Exterior Features	ZX2
Power mirrors (black)	●
Rear spoiler	●
Rear window defroster	●

Interior Features	
Interval windshield wiper	●
Dual visor mirrors	●
Interior trunk release	●
Smoker's Package	●
Tachometer	●
Air conditioning	●
Floor mats, front and rear	●
Moonroof, power sliding	●
Center console (with 2 forward cupholders and storage area, and rear bin and cupholder)	●

Safety and Security Features	
Battery saver (turns off interior lights after 10 minutes)	●
Anti-lock braking system	●

Option Groups	
Comfort Group includes dual map lights, leather-wrapped steering wheel, speed control, tilt steering wheel	●
Power Group includes all-door Remote Keyless Entry System with anti-theft, power windows ("one-touch-down" feature on driver's window), power locks	●



The available all-door remote entry key fob with anti-theft system gives easy access while enhancing security.

Powertrains	ZX2
2.0L DOHC 16V Zetec 5-speed manual	●
2.0L DOHC 16V Zetec 4-speed automatic	●
California emissions system	●
Heater, engine block	●

Tires/Wheels	
P185/60Tx15 BSW tire	●
15" aluminum (swirl) wheel	●
P185/65Rx14 BSW tire	●
14" chrome 5-spoke wheel	●

Seats	
Cloth sport bucket	●
Unique leather-trimmed sport bucket	●
4-Passenger seating with center console	●
60/40 split/fold rear seat	●

Audio	
AM/FM stereo/cassette	●
AM/FM stereo/cassette/Premium Sound with 6-disc compact changer (80 watts, trunk-mounted CD changer)	●

standard ● optional ●

Product Changes and Options Availability
Following publication of the catalog, certain changes in standard equipment, options, prices and the like, or product delays, may have occurred which would not be included in these pages. Your Ford Dealer is your best source for up-to-date information. Ford Division reserves the right to change product specifications at any time without incurring obligations. Options shown or described are available at extra cost and may be offered only in combination with other options or subject to additional ordering requirements or limitations.



Medium Prairie Tan
Cloth Trim



Dark Charcoal
Leather Trim

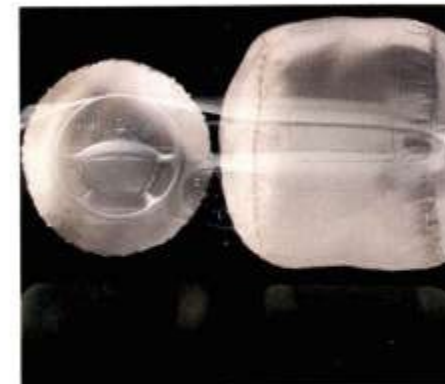


ZX2 owes its gutsy ride and handling to an independent rear Quadralink suspension system. Here's how it works. Each wheel can independently react to bumps in the road, moving both upward and rearward to absorb and reduce impact harshness. Add power rack-and-pinion steering to the mix and you're gonna have some fun on your hands.



The 130-horsepower, 16-valve, 2.0-liter Zetec is powerful and efficient. It can go 100,000 miles between tune-ups.*

*Under normal driving conditions with routine fluid/filter changes.

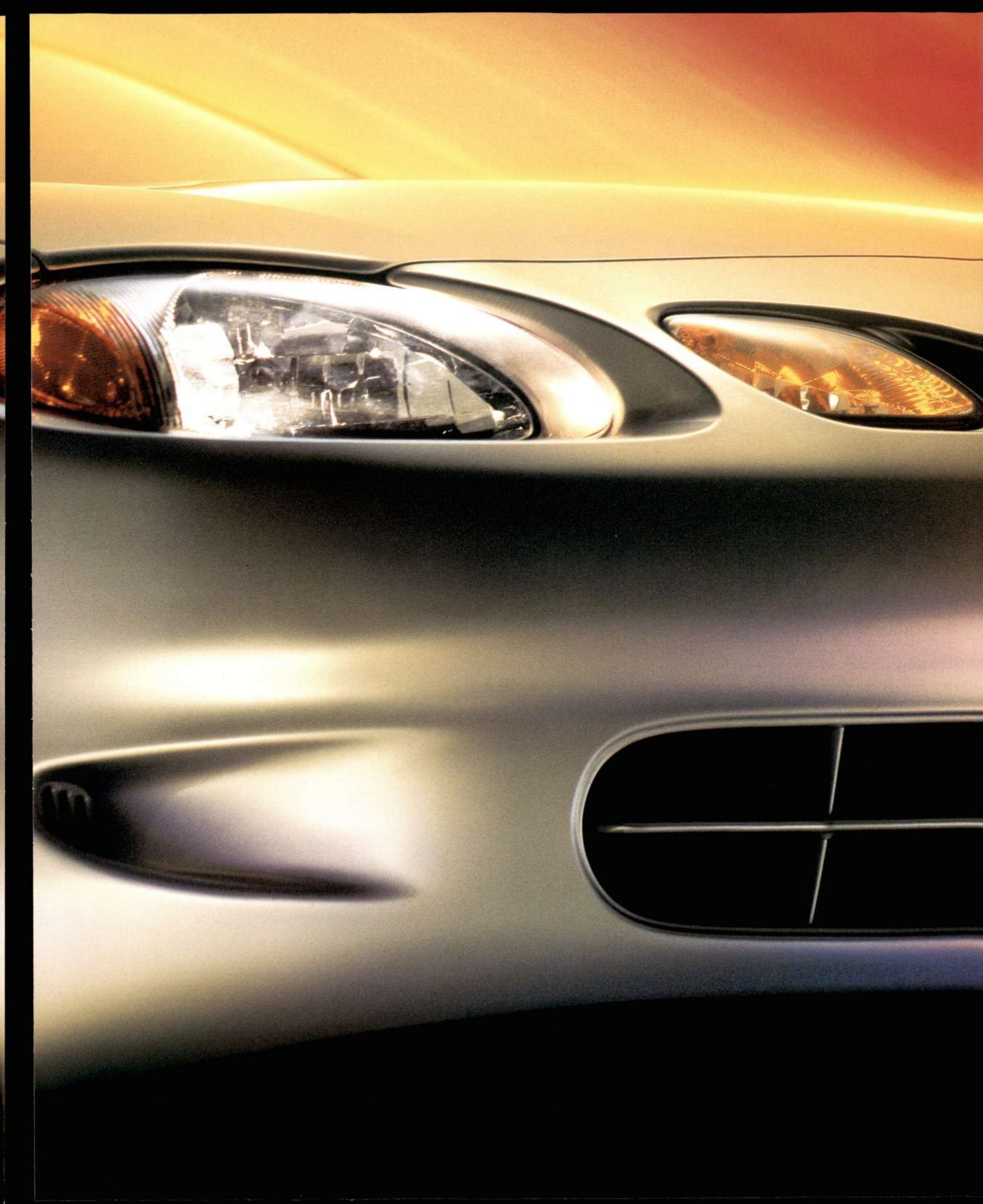


Standard Second Generation airbags for driver and passenger protection.*

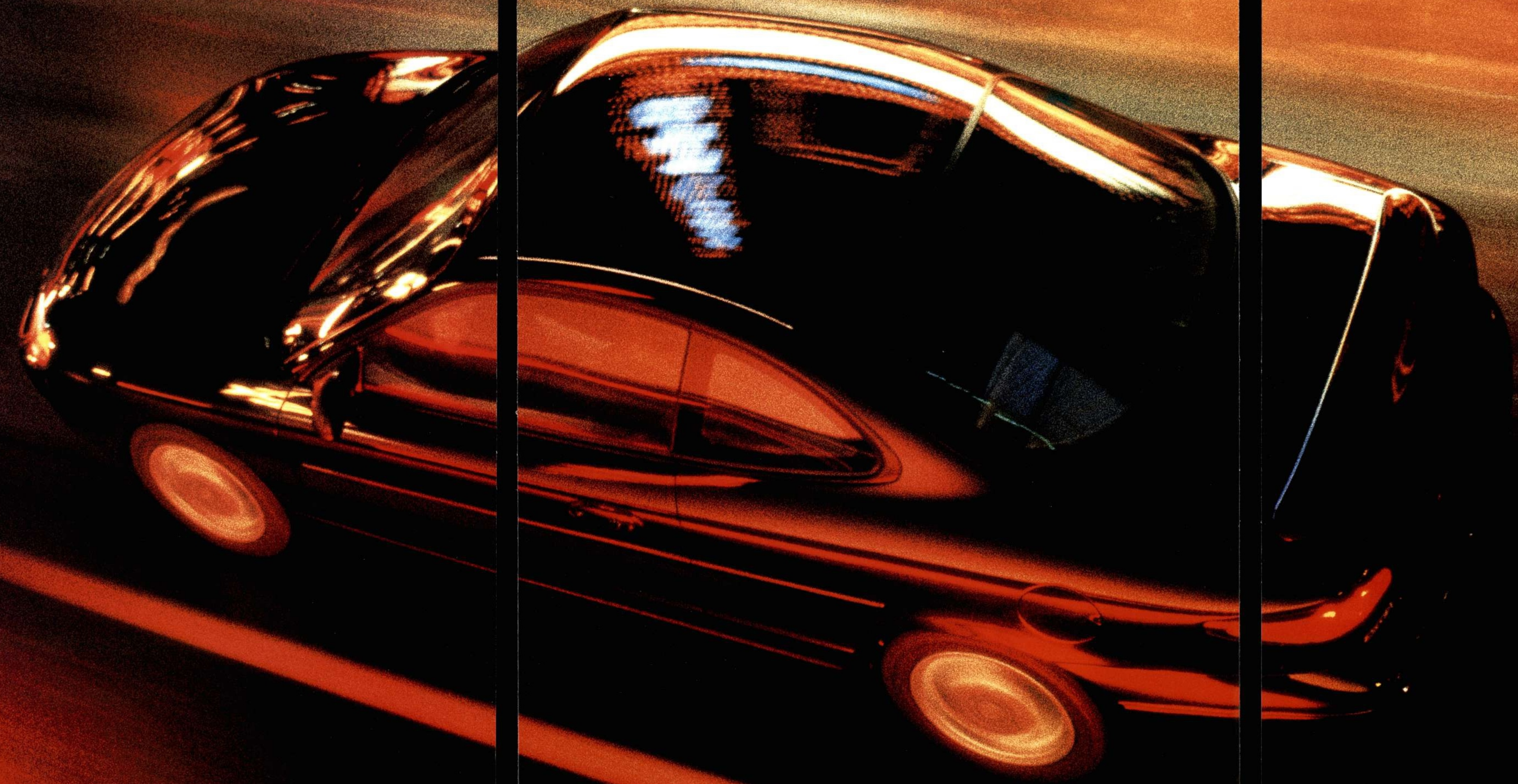
*Always wear your safety belt and secure children in the rear seat.

ZX2 isn't a white-knuckle experience. It's a little more easygoing than that. Instead of taking you to the edge, ZX2 plays within legal limits. The kind of fun that leaves you wanting more. Because last time we checked, you liked smiling more than screaming.





You've been known to talk the talk. To toss around an idea or two. In other words, wing it. ZX2 is such a car. As resourceful as the ladder climbers who drive it. And it doesn't hurt that this bundle of joy comes with a 130-horsepower Zetec engine. Or that it looks better than an open weekend. ZX2. It's all about asking, "Why not?"



Citrus Gold
Clearcoat Metallic



Autumn Orange
Clearcoat Metallic



Bright Red
Clearcoat



Toreador Red
Clearcoat Metallic



Bright Atlantic Blue
Clearcoat Metallic



Twilight Blue
Clearcoat Metallic



Tropic Green
Clearcoat Metallic



Silver Frost
Clearcoat Metallic



Black
Clearcoat



Oxford White
Clearcoat



Exterior Paint Colors

ZX2

- Citrus Gold** Clearcoat Metallic
- Autumn Orange** Clearcoat Metallic
- Bright Red** Clearcoat
- Toreador Red** Clearcoat Metallic
- Bright Atlantic Blue** Clearcoat Metallic
- Twilight Blue** Clearcoat Metallic
- Tropic Green** Clearcoat Metallic
- Silver Frost** Clearcoat Metallic
- Black** Clearcoat
- Oxford White** Clearcoat

Interior Trim

Medium
Prairie Tan

Dark Charcoal

●	●
●	●
●	●
●	●
●	●
●	●
●	●
●	●
●	●
●	●

Roadside Assistance

Every new Ford includes the assurance of a 24-hour emergency Roadside Assistance Program provided during the 3-year/36,000-mile limited warranty period. Ask your Ford Dealer for complete details on this program which includes such services as fuel delivery, tire change, jump start, or even help when you're locked out of your vehicle.

New Vehicle Limited Warranty

Under the New Vehicle Limited Warranty, you receive bumper-to-bumper coverage for 3 years/36,000 miles with no deductible. You also receive corrosion perforation coverage for five years with unlimited mileage and no deductible. Ask your Ford Dealer for a copy of the warranty.

Quality Care

The people who know your vehicle best. The parts designed for it. A service department that understands your needs and respects your time. That's what Quality Care is all about.



Bettering the communities in which we do business is the goal of the Ford Force. We're organized, mobilized and coming to a community near you. Join us.



Visit our website at www.fordvehicles.com