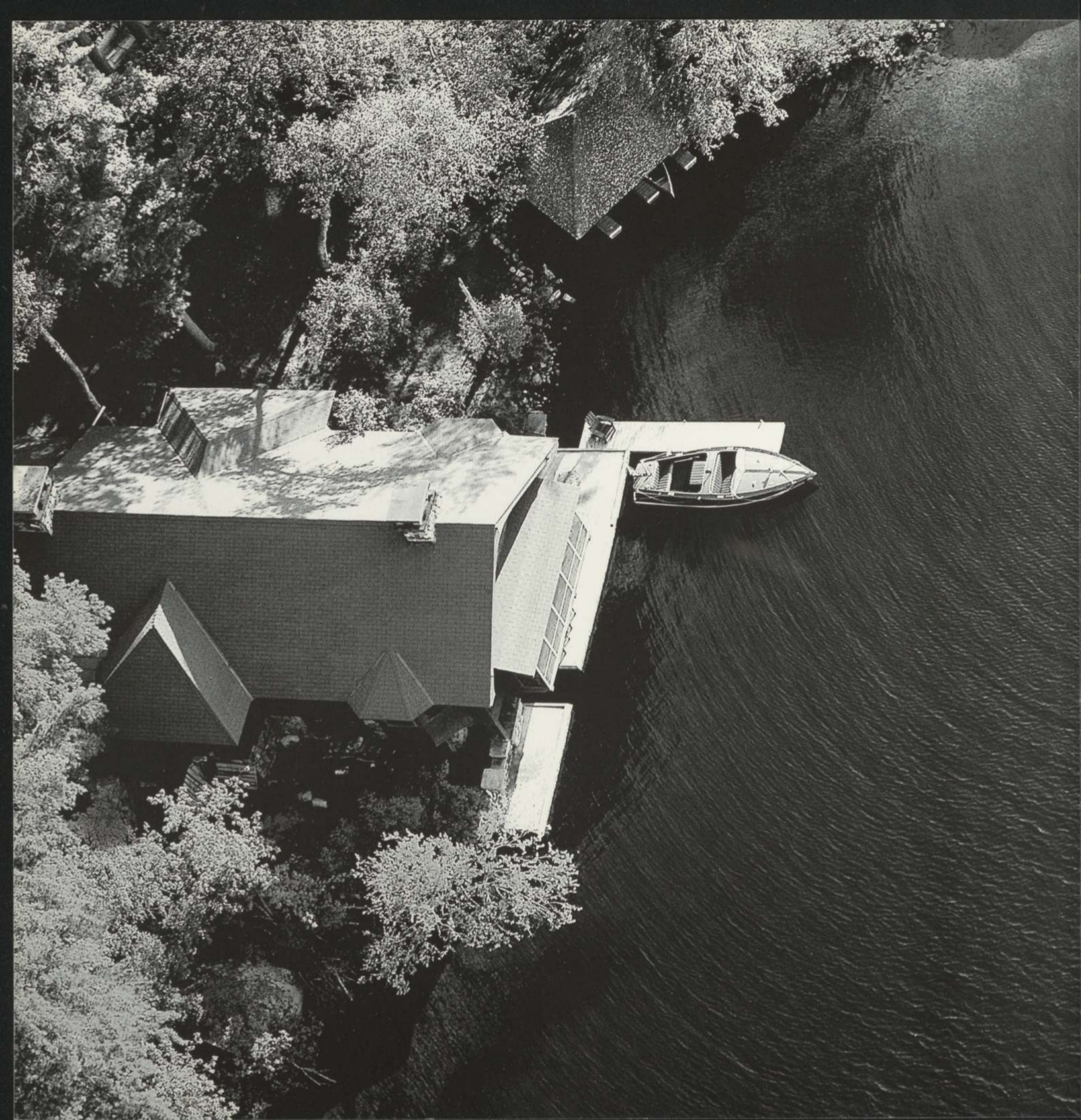


LS • CONTINENTAL • TOWN CAR • NAVIGATOR



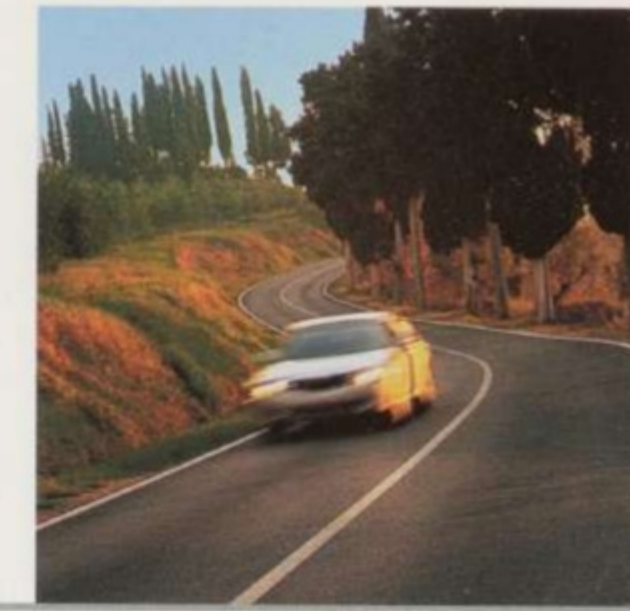
2 0 0 0

LINCOLN

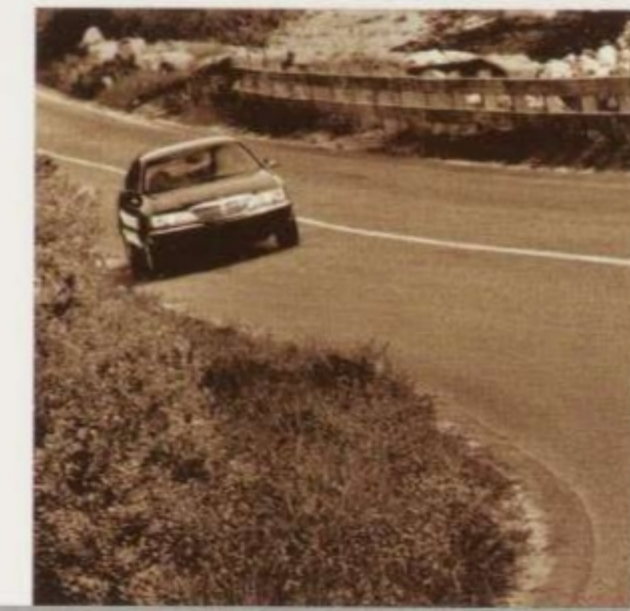


contents

LS
pages 1-20



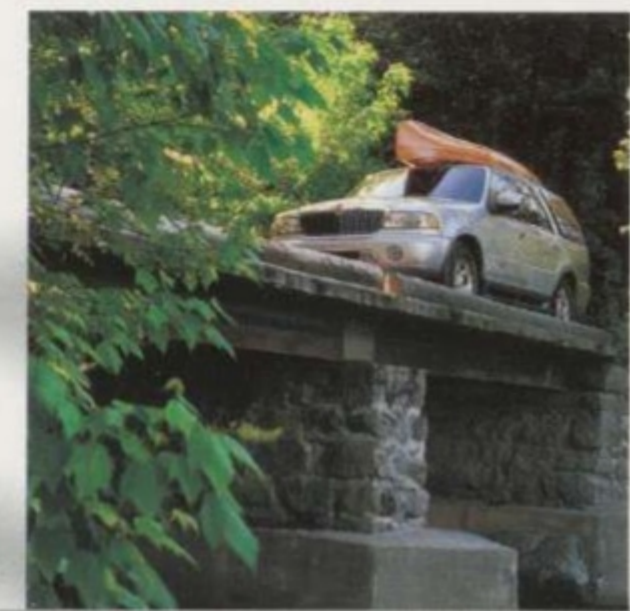
CONTINENTAL
pages 21-38

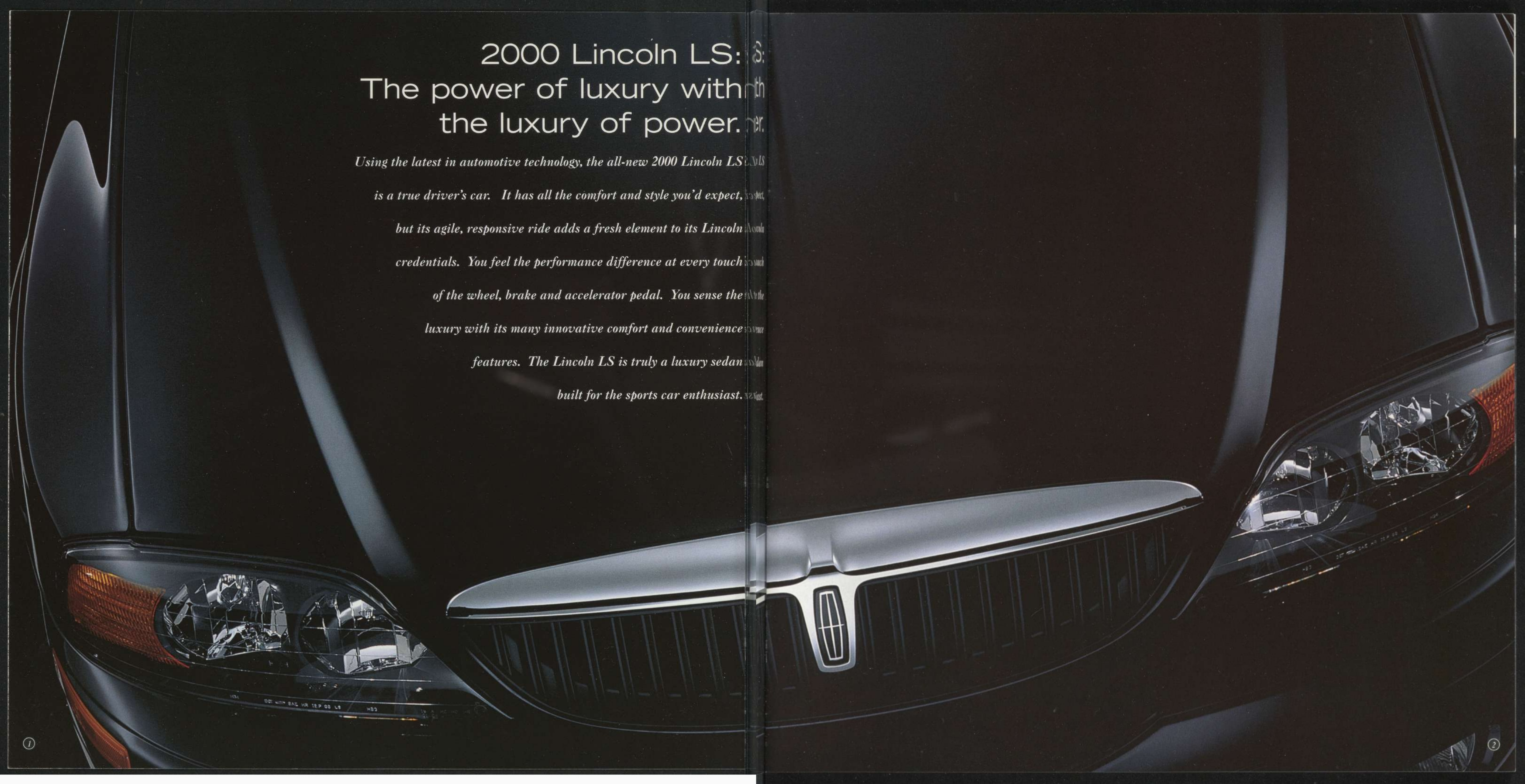


TOWN CAR
pages 39-56



NAVIGATOR
pages 57-74





2000 Lincoln LS:
The power of luxury with
the luxury of power.

Using the latest in automotive technology, the all-new 2000 Lincoln LS

is a true driver's car. It has all the comfort and style you'd expect,

but its agile, responsive ride adds a fresh element to its Lincoln

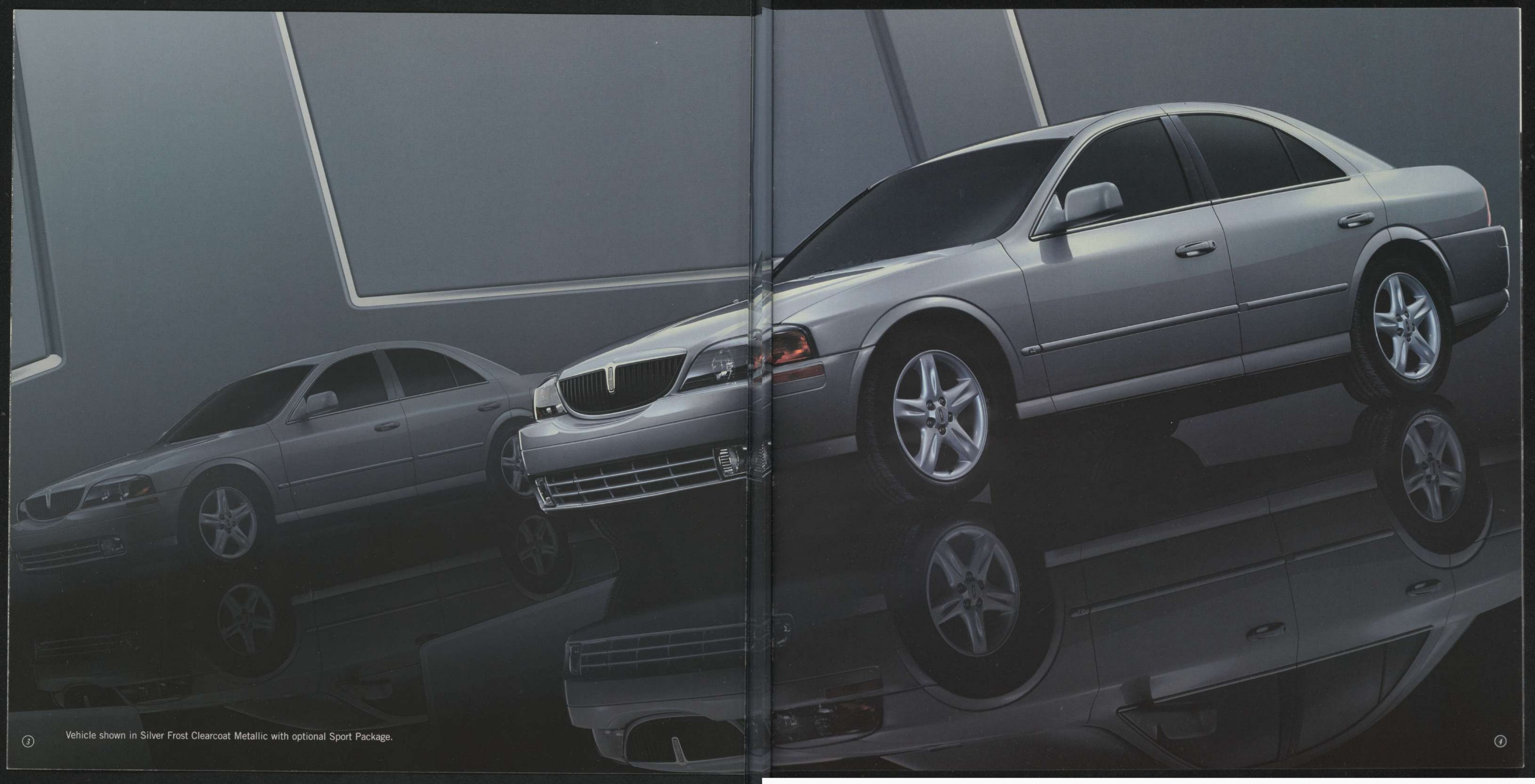
credentials. You feel the performance difference at every touch

of the wheel, brake and accelerator pedal. You sense the

luxury with its many innovative comfort and convenience

features. The Lincoln LS is truly a luxury sedan

built for the sports car enthusiast.



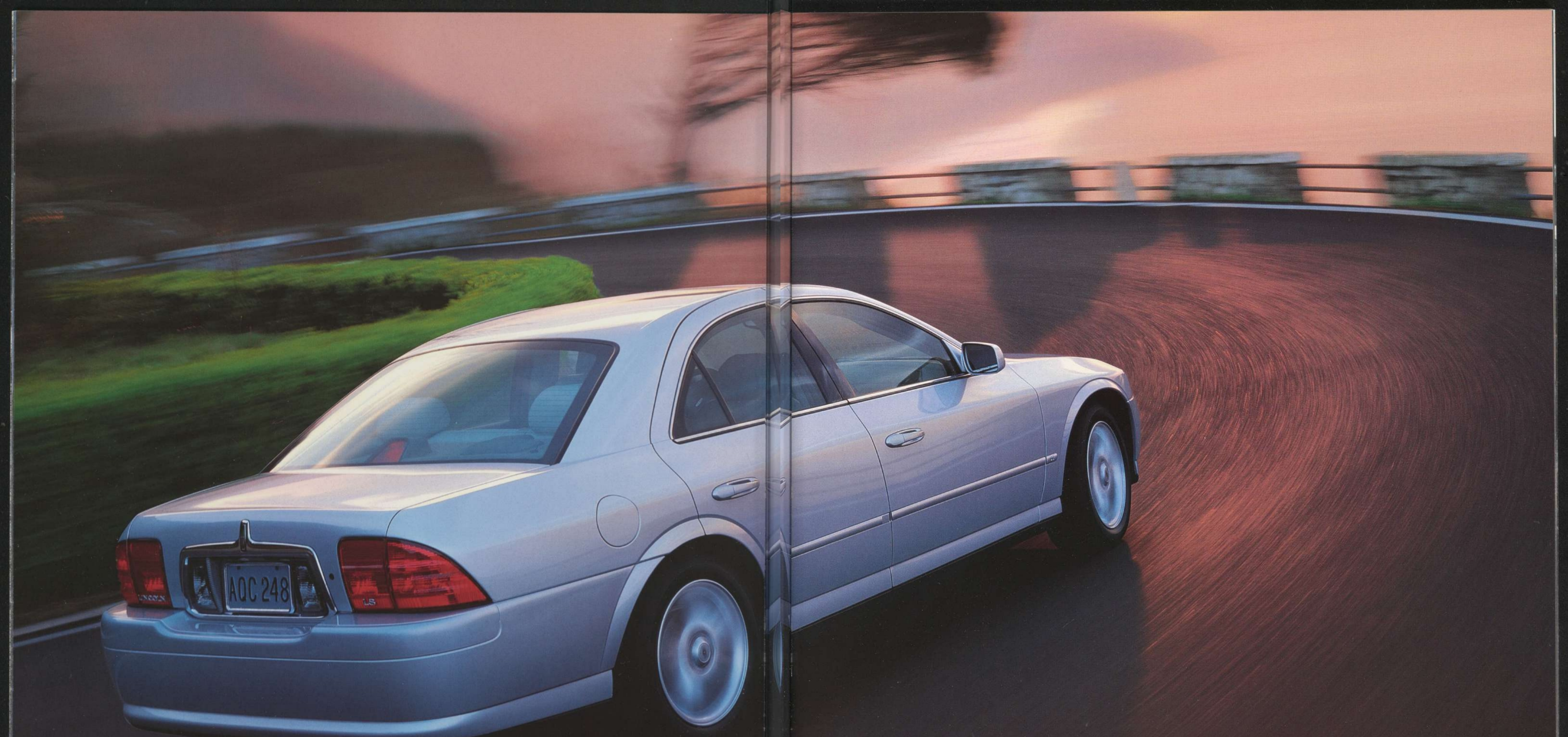
Vehicle shown in Silver Frost Clearcoat Metallic with optional Sport Package.



Vehicle shown in Silver Frost Clearcoat Metallic with optional Sport Package.



7 LS V6 shown in Black Clearcoat with optional Sport Package.



LS V8 shown in Silver Frost Clearcoat Metallic with optional Sport Package.





LS V6 interior shown with optional leather trim in Medium Parchment.
(Metric instrumentation is standard in Canada.)

1. The 5-speed manual transmission is available with the V6 engine for enhanced driver control. The result is optimum responsiveness and a more sporty feel to the driver.

2. Steering wheel mounted audio controls allow you to adjust the stereo volume, media source and volume mute.



3. An electronic power telescopic/tilt steering column allows you to smoothly adjust the position of the steering wheel for added comfort.

4. Parking lamps, low-beam headlamps and front fog lamps automatically light up with the Auto-lamp System, in response to the ambient light level. Then, when you switch off the ignition, the lamps stay on for a short period to help you make a safe exit. A battery saver feature ensures the lamps are automatically turned off.

1. An all-new SelectShift™ transmission is available with the Sport Package. Once the gear lever is in SelectShift™ mode, you can change up a gear by pushing the gear lever forward, and down a gear by pulling the gear lever back. You can easily revert to the automatic transmission whenever you choose.

2. You can always find your ideal seating position via the 8-way power driver's seat. The 2 position memory controls are conveniently located on the door armrest for easy adjustment (standard on LS V8, available on the LS V6 with the Convenience Package).



3. The Electronic Message Centre provides relevant driver information in the instrument cluster for fuel economy and vehicle system status and has the ability to display this information in several languages (standard on LS V8, available on the LS V6 with the Convenience Package).

4. Exterior mirrors are power and heated, and include memory settings for 2 drivers on the LS V8 (available on the LS V6 with the Convenience Package).

LINCOLN LS FEATURES

The Lincoln LS gives you advanced power and performance capabilities with innovative and luxurious interior amenities that makes this a truly unique sports sedan.

A high speed Powertrain Electronic Control Module (PTEC) integrates engine, transmission and other crucial powertrain functions to deliver smooth, controlled engine performance.

A new rear-wheel drive automatic transmission has been designed specially for the Lincoln LS. It is a close-ratio 5-speed with overdrive and it is computer-controlled for smoother and seamless gear changing.

The available AdvanceTrac™ Interactive Vehicle Dynamics Control constantly monitors speed, road conditions and driver steering input, controlling each wheel for maximum stability. Information from the yaw rate sensor, lateral acceleration sensor, steering wheel sensor, wheel speed sensors and master cylinder pressure sensors are used to correct discrepancies between the driver's input and the vehicle's motion. AdvanceTrac™ adjusts the brake forces at each wheel individually, preventing excessive yaw and wheelspin, especially around corners. AdvanceTrac™ is integrated with 4-wheel anti-lock braking (ABS) and all-speed traction control for smooth handling precision.

Electronic Brake Force Distribution (EBD) provides ABS-derived electronic proportioning of brake action. This allows compensation for different vehicle loads, promoting braking precision.

To increase handling agility, traction control operates at all speeds to enhance traction in all road conditions (not available on manual transmission models).

The Lincoln LS has undergone the most exacting torsional and bending testing in Lincoln's history. The result is a stiffened body structure and chassis which provides the optimum foundation for the suspension, while endowing the Lincoln LS with smooth Lincoln ride characteristics and responsive handling.

The patented SLA aluminum independent rear suspension has advanced anti-lift properties. This optimized suspension geometry and low unsprung weight means that the rear of the Lincoln LS stays close to the road under braking. As well as reducing tire wear, this boosts driver confidence, especially when braking.

LINCOLN LS FEATURES

Sensors near the interior rearview mirror detect moisture accumulation on the windshield and automatically activates slow or fast moisture wiper motion. These moisture sensitive wipers (standard on LS V8, available on LS V6 with the Convenience Package) work in virtually any weather because when they are in the rest position, they are heated to prevent a build-up of ice or snow.

The SmartLock™ anti-lockout system prevents the doors from locking when the key is in the ignition, to reduce the chance of locking keys in the car.

Auto locking ensures that doors can lock automatically when the shift lever is moved out of "P" or "R" (automatic) or when the parking brake is off (manual). This means you don't have to remember to lock the doors while driving.

The Alpine® Audiophile sound system (available on LS V8 only) produces 175 watts of amplification, with a 12-speaker array and sub woofer. An equalization selector optimizes sound quality for all or selected seats, while Digital Signal Processing can simulate a variety of listening conditions, from concert hall to jazz club.

Lincoln LS has a theatre seating design where rear seats are positioned higher than the front seats to improve the view for rear seat passengers.

The driver and front passenger have both front and side air bags to provide all-round cushioned protection.

The power windows and electronically controlled optional moonroof have global opening via the remote entry key fob or when you insert the driver's door key in the door lock for added convenience.

Memory seats, mirrors and steering column (standard on LS V8, part of the optional Convenience Package on LS V6) can be set for two different drivers for personalized comfort.

Drivetrain

ENGINE - LS V6	
TYPE	3.0L DOHC V6 24V all aluminum with PTEC (Powertrain Electronic Control) engine management system
DISPLACEMENT	3.0 litre
HORSEPOWER	210 @ 6500 rpm
TORQUE	205 lb-ft @4750 rpm
FUEL DELIVERY	Sequential electronic fuel injection
IGNITION	Coil-on-plug
EXHAUST SYSTEM	Dual

ENGINE - LS V8	
TYPE	3.9L DOHC V8 32V all aluminum with PTEC (Powertrain Electronic Control) engine management system
DISPLACEMENT	3.9 litre
HORSEPOWER	252 @ 6100 rpm
TORQUE	267 lb-ft @4300 rpm
FUEL DELIVERY	Sequential electronic fuel injection
IGNITION	Coil-on-plug
EXHAUST SYSTEM	Dual

TRANSMISSION		
TYPE	Automatic (standard on LS V6 and LS V8) Manual (optional on LS V6 only) SelectShift™ (part of optional Sport Package)	5-speed automatic with overdrive 5-speed manual with overdrive Automatic with driver-controlled "tap up/tap down" feature

Chassis

BODY	Unitized construction with front and rear subframes
SUSPENSION - Front	Upper and lower aluminum control arms, anti-dive and anti-lift tuning, dual taper coil springs, stabilizer bar
- Rear	Upper and lower aluminum control arms, anti-dive and anti-lift tuning, dual taper coil springs, stabilizer bar
- Optional	European sport tuned suspension (part of optional Sport Package)
SHOCK ABSORBERS	Front and rear gas-charged hydraulic twin tube, coil overs with integral rebound springs in front only
STEERING	Variable-assist, power, rack-and-pinion
TYPE	Turns, lock to lock, meters (ft.) .85 (2.8)
BRAKES	Power, 4-wheel ventilated discs with anti-lock braking system (ABS) and Electronic Brake Force Distribution (EBD)
WHEELS	16" 5-spoke brushed aluminum
TIRES	P215/60HR BSW all-season (LS V6) P215/60VR BSW all-season (LS V8)

Accommodations and Dimensions

HEAD ROOM, mm (in.) Front/Rear	1026 (40.4)/952 (37.5)
LEG ROOM, mm (in.) Front/Rear	1087 (42.8)/950 (37.4)
HIP ROOM, mm (in.) Front/Rear	1346 (53)/1382 (54.4)
SHOULDER ROOM, mm (in.) Front/Rear	1466 (57.7)/1448 (57)
OUTSIDE DIMENSIONS, mm (in.)	1425 (56.1) height; 2035 (80.1) width; 4925 (193.9) length
WHEELBASE, mm (in.)	2908 (114.5)
FUEL CAPACITY, litres (gals.)	68 (15)
LUGGAGE SPACE, litres (cu. ft.)	382 (13.5)
GROSS VEHICLE WEIGHT, kgs (lb.)	LS V6 manual 2050 (4519) LS V6 automatic 2078 (4581) LS V8 automatic 2119 (4672)

Safety and Security

- Driver and front passenger air bag Supplemental Restraint System
- 4-wheel anti-lock braking system (ABS)
- Front height adjustable safety belts, and rear inertia reel, lap and diagonal safety belts
- Perimeter anti-theft alarm system
- SmartLock™ anti-lockout system
- Rear window defroster
- Fuel cut-off - inertia switch
- Child safety rear door latches
- Illuminated entry system
- Battery saver feature
- Driver and front passenger side-impact air bags
- Traction Control (not available with manual transmission)
- Side door impact beams
- Securilock™ anti-theft system
- Power, heated exterior side mirrors
- Front and rear seat head restraints
- Electronic returnless fuel system
- Remote Keyless Entry system with panic button
- Brake/shift interlock
- Delayed accessory power

Interior Amenities

- Individual front bucket seats with 8-way power driver's seat and 6-way power passenger seat and manual lumbar adjustment
- 60/40 split fold down rear seat
- Front seat armrest in centre console
- Electronic telescopic steering column with tilt adjustment
- Dual front cup holders (single on manual transmission)
- Premium AM/FM stereo with cassette, 6-disc CD player, speed sensitive volume control and 4 speakers
- Driver and passenger illuminated visor mirrors
- Wood appearance appliques on door trim, instrument panel, shifter bezel and front and rear ash trays
- Real wood and leather wrapped steering wheel (non-sport)
- Analog instrument cluster
- Dash-mounted, illuminated shift indicator
- Rear seat "theater seating"
- CFC-free air conditioning with dual automatic temperature controls, particulate air filter, dual sunload sensors and rear seat ducts
- Fold down rear seat armrest with dual cup holders
- Power windows with express down driver's side
- Front centre console with storage
- Electronic digital clock
- Illuminated steering wheel switches, luggage compartment, instrument panel courtesy lights and rear dome light
- Illuminated and lockable glove box
- Remote decklid and fuel filler door releases
- Real wood shift knob (non-sport)
- Exterior temperature display
- Speed control with tap up/tap down feature
- Front seat back storage pockets

Exterior Features

- Chrome grille with moulded black vertical ribs
- Body-coloured door handles
- Fog lights
- Colour-keyed bumpers with chrome inserts
- Solar-tinted glass
- 5-spoke brushed aluminum wheels
- Headlights with automatic on/off delay

LS V8 Features

- All features listed, plus:
- Leather seating surfaces*
 - Moisture sensitive windshield wipers*
 - Electronic telescopic steering column with tilt adjustment and 2 setting memory function*
 - Heated front seats*
 - Electrochromic rear view mirror*
 - Universal garage door opener*
 - Electronic message centre*
 - Door side mirrors with 2 setting memory function*
 - Two-way adjustable rear seat head restraints

*Optional on LS V6.

Options

- Convenience Package (standard on LS V8): Electrochromic rear view mirror, universal garage door opener, moisture sensitive wipers, memory driver's seat, steering wheel and exterior mirrors, power driver and passenger lumbar
- Sport Package: 17" super silver aluminum 5-spoke wheels, P235/50VR BSW tires, full-size spare tire and matching aluminum wheel, European sport suspension tuning, SelectShift™ automatic transmission, body coloured bumper treatment, engine oil cooler
- 3.0L 24V V6 engine with 5-speed manual transmission (LS V6 only)
- 16" high polished aluminum 5-spoke wheels
- Portable, hands free, cellular telephone
- Audiophile System, includes AM/FM stereo cassette with 12 speakers and sub woofer (LS V8 only)
- AdvanceTrac™ stability enhancement system
- Power moonroof

Upholstery



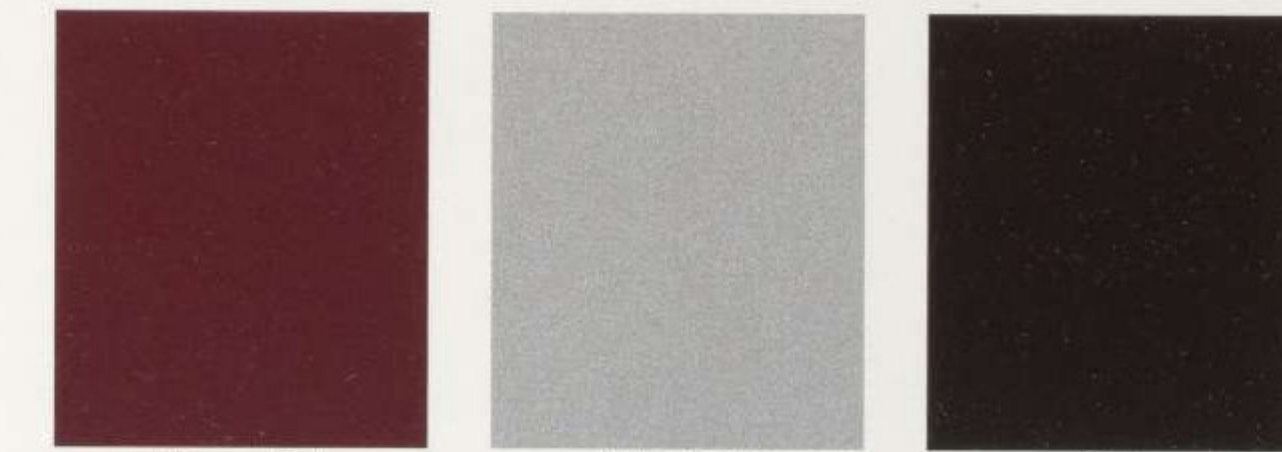
Deep Charcoal

Light Graphite

Medium Parchment

Truffle

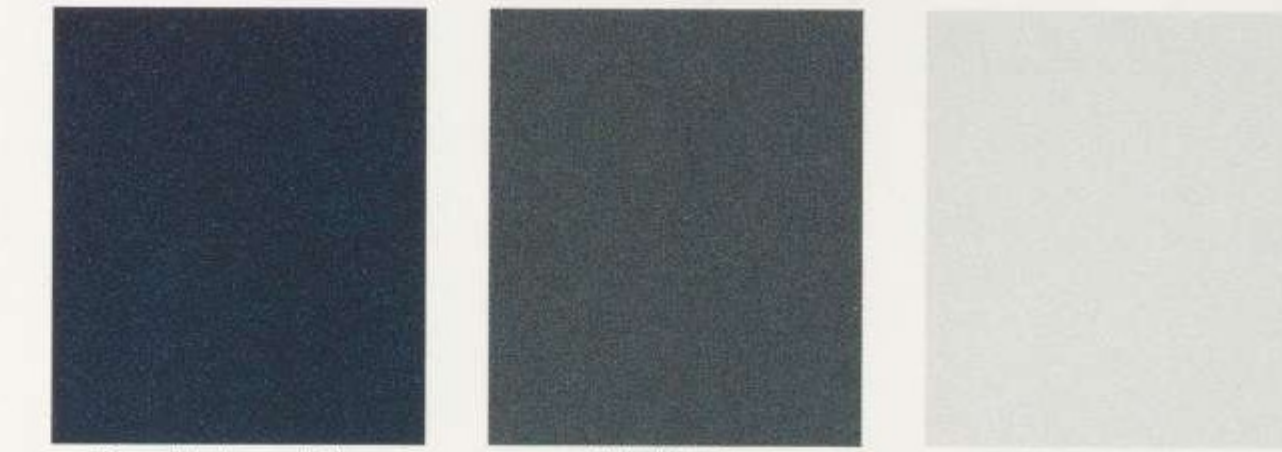
Paint



Autumn Red Clearcoat Metallic

Silver Frost Clearcoat Metallic

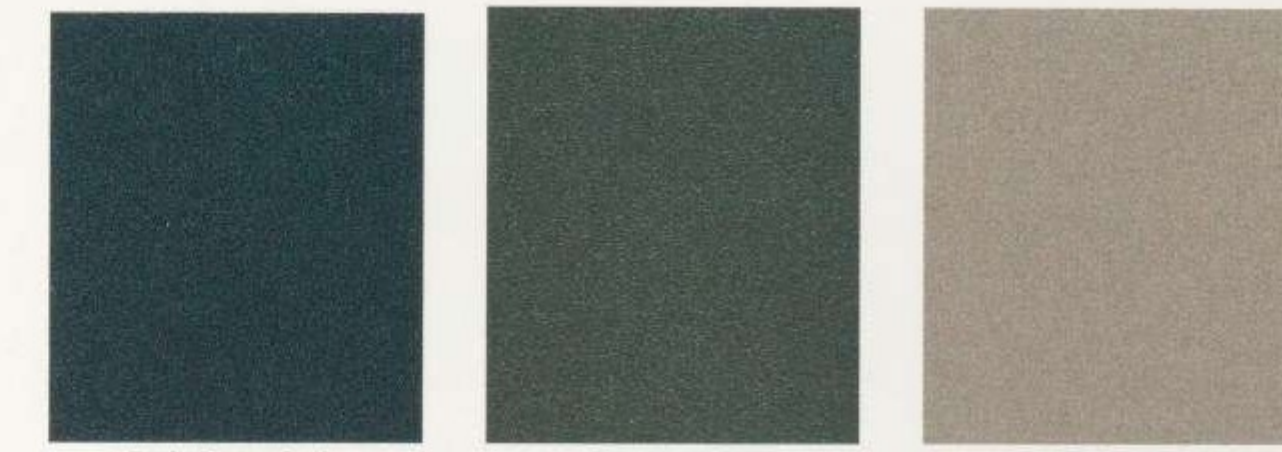
Black Clearcoat



Deep Wedgwood Blue Clearcoat Metallic

Midnight Grey Clearcoat Metallic

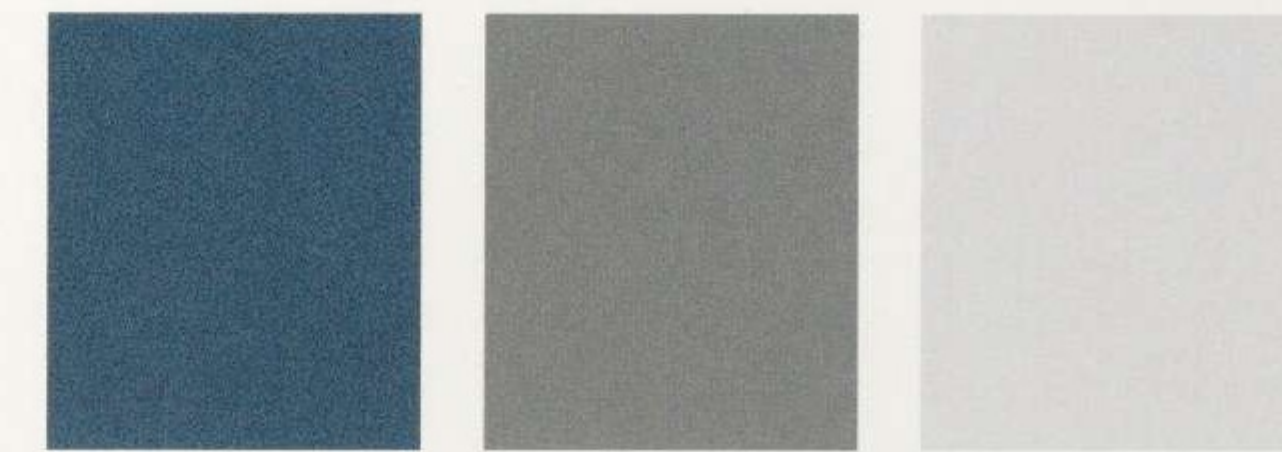
Vibrant White Clearcoat



Dark Green Satin Clearcoat Metallic

Estate Green Clearcoat Metallic

Ivory Parchment Clearcoat (Tri-Coat)**




Graphite Blue Clearcoat Metallic

Light Parchment Gold Clearcoat

White Pearlescent Clearcoat Metallic (Tri-coat)**

**Tri-coat body colours are an extra cost.



2000 Lincoln Continental:
All the design, comfort and
satisfaction one needs.

The 2000 Lincoln Continental is a luxury car that reveals a different side of itself at every turn. So many stylish details; so seductively appealing, such refined comfort. Its curves grab your attention. The front-wheel drive design holds the road. This automobile is part moving sculpture, part cozy club room. It is passion for the soul and euphoria for the mind.



FERRY SCHEDULES

WINTER
OCT. 15 TO MAY 30
DAY - 7:00 AM to 7:30 PM
EVEN - 9:00 PM to 10:00 PM
11:00 PM to 11:15 PM

SUMMER
MAY 30 TO OCT. 15
7:00 AM to MIDNIGHT

CHECK SCHEDULES WITH CAPT.

Lincoln Continental shown in Light Parchment Gold Clearcoat Metallic. Some equipment shown may be optional.



Lincoln Continental shown in Black Clearcoat. Some equipment shown may be optional.



Lincoln Continental shown in Vibrant White Clearcoat. Some equipment shown may be optional.



Lincoln Continental with Light Parchment interior. Some equipment shown may be optional.



Lincoln Continental with Light Parchment interior. Some equipment shown may be optional. Metric instrumentation is standard in Canada.



1. Entering your Continental involves higher security, thanks to the programmable keypad located on the driver's side door. Keyless entry is possible only with your personalized identification number.

2. The overhead console goes beyond mere map lights to offer storage for sunglasses and a tissue holder.



3. An available power moonroof welcomes in the sun, moon and the stars, or just a touch of breeze.

4. Opt for the Memory Profile System (part of the optional Driver Select System) and gain access to a whole host of special Continental luxury features, starting with programmable seat and mirror positions. Two drivers can personalize up to eleven preferred settings, all of which are instantly recalled by activating the keyless entry system.

1. Conveniently located in the passenger compartment, and readily accessible to both driver and front passenger, the available CD changer is controlled by the Alpine® Audio System. It provides full concert-hall sound of your favourite music programming for up to six uninterrupted performances.

2. Rich bird's-eye maple wood trim accents the dash and then wraps around to grace the front doors.



3. Elegant wheels set off Continental's good looks. Choices start with the standard ten-spoke brushed aluminum wheel. Options include an eight-spoke highly polished aluminum wheel and the elegant six-spoke chrome wheel design. All versions are sixteen-inch diameter for style and perfect proportions.

4. Each rear seat passenger gets a convenient cup holder located in the centre armrest for easier access.

LINCOLN CONTINENTAL FEATURES

In a luxury car already well-equipped with safety features, driver and front passenger side-impact air bags supplement Continental's existing air bag system, adding a whole extra level of safety.¹

Special SecuriTires on the Continental are part of the available Personal Security Package. The reinforced sidewalls supporting these tires enable the driver to maintain control after total tire pressure loss that typically occurs from a flat or blowout. More importantly, the system allows the driver to operate the Continental for up to 80 kilometers (50 miles) depending on load, speed and driving conditions.

Even in bad weather, the Continental's four-wheel disc anti-lock brakes contribute immeasurably to improved control during hard braking on a surprisingly wide variety of road surfaces.

Up front, Continental features an independent Macpherson strut suspension. This design is well known for its superior cornering and excellent handling characteristics overall. Yet the ride inside is still smooth and luxurious enough to satisfy the high standards Lincoln Continental has set for itself.

Contributing to a more comfortable and sophisticated ride, there's the Continental's short- and long-arm independent rear suspension system with stabilizer bar and air shocks. Automatic front-to-rear and side-to-side load leveling is another remarkable feature of this technologically adept suspension.

The available Memory Profile System (part of the optional Driver Select System) goes beyond the comfort and convenience of programmable seats and mirrors. For example, via your remote keyless entry keyfob, keyless entry keypad, or menu button on your message centre, you'll select everything from steering wheel effort to adjustable ride memory. Everything from instrument panel lighting levels and express-down driver's window to easy entry/exit driver's seat and automatic door locks. The Memory Profile System even provides Continental owners with a door lock horn chirp and exterior mirrors that tilt down when the vehicle is put into reverse.

¹Always wear your safety belt and secure children in the rear seat.

LINCOLN CONTINENTAL FEATURES

The available Driver Select System refers to a set of available driving conveniences that allows the driver an unprecedented level of control. Among them is selectable ride control, which allows a choice of firm, normal or plush settings depending on the road surface and the ride desired. Other Driver Select System amenities include a semi-active suspension, duplicate steering wheel audio and climate controls, driver's-side exterior auto-dimming electrochromic mirror and the Memory Profile System.

As a thoughtful plus on bad weather days, exterior mirrors can be heated to quickly melt away ice and snow for better clarity and safety. These specially designed mirrors will also tilt down automatically when the driver shifts into reverse, aiding curb visibility for better parking maneuverability.

A sophisticated 4.6L 32-valve DOHC InTech™ V8 engine delivers an impressively responsive, yet incredibly smooth 275 horsepower.

The Virtual Image Instrument cluster uses highly visible graphics projected onto a black surface, giving the images and data a unique, three-dimensional appearance. The end result is information that's easy to read under lighting conditions as diverse as bright sunlight or complete darkness.

All-Speed Traction Control helps maintain handling and steering on a variety of slippery surfaces by electronically and automatically modulating engine torque output and brake behavior.

The coil-on-plug electronic ignition provides more dependable spark sequences and a more effective combustion chamber detonation. It also totally eliminates the need for spark plug wires.

A remote Keyless Entry system comes standard, providing automatic lock activation and a "panic" button to set off the horn and marker lights in an emergency. Added security is further enhanced by the autolamp feature. This device keeps your headlamps lit for a preset period after you've switched the ignition off and left the car. As for getting into your Continental, the programmable keypad on the driver's side door will only unlock the car after your personalized identification number has been entered.

Drivetrain

ENGINE	
LAYOUT	Transverse mounted front engine, front-wheel drive
TYPE	DOHC 32-valve InTech™ V8 with aluminum block and cylinder heads
DISPLACEMENT	4.6 litre/281 cu in
BORE & STROKE	90.2 mm x 90.0 mm/3.55 in. x 3.54 in.
COMPRESSION RATIO	9.85:1
HORSEPOWER	275 @ 5750 rpm (SAE net)
TORQUE	275 lb-ft @ 4750 rpm (SAE net)
FUEL DELIVERY	Sequential multi-port electronic fuel injection
FUEL REQUIREMENT	91 octane premium (recommended)
IGNITION	Coil-on-plug integrated electronic fuel injection
EXHAUST SYSTEM	Dual, stainless steel, with chromed pipe ends
TRANSMISSION	
TYPE	4-speed electronic automatic overdrive transaxle with overdrive lockout (modulated lock-up converter in 3rd and 4th gears)
AXLE RATIO	3.56:1

Chassis

BODY	
Unitized construction with rubber isolated front subframe	
SUSPENSION	
Front	Independent MacPherson struts with road-calibrated steel coil springs, 19.0 mm stabilizer bar, tension struts and lower control arms
Rear	Short- and long-arm independent with air springs, 19.5 mm stabilizer bar, tension struts, upper control arms, lower control arms, cast spindle with forged stem and integrated ball joints
SHOCK ABSORBERS	
Twin tube, gas-pressurized, hydraulic passive (internal rebound springs front only)	
STEERING	
Type	Speed-sensitive, variable-assist power rack-and-pinion with three driver selections for steering effort: high, normal, low
Overall ratio	16.95:1 (on centre)
Turns, lock-to-lock	2.86
Turning circle, meters (ft.)	12.5 (41.1) diameter
WHEELBASE, mm (in)	
2990 (117.7)	
TRACK, mm (in)	
Front/Rear	1600/1562 (63.0/ 61.5)
BRAKES	
Front	Power-assisted disc, 294 cm ² (11.57-inch) diameter rotors, anti-lock
Rear	Power-assisted disc, 257 cm ² (10.1-inch) diameter rotors, anti-lock
WHEELS	
16-inch aluminum	
TIRES	
P225/60R16 97H black sidewall	

Accommodations and Dimensions

HEAD ROOM, mm (in)	988 (38.9) front; 965 (38.0) rear
LEG ROOM, mm (in)	1064 (41.9) front (max.); 965 (38.0) rear (min.)
HIP ROOM, mm (in)	1415 (55.7) front; 1435 (56.5) rear
SHOULDER ROOM, mm (in)	1450 (57.1) front; 1438 (56.6) rear
OUTSIDE DIMENSIONS, mm (in)	1422 (56.0) height; 1869 (73.6) width; 5296 (208.5) length
FUEL CAPACITY, litres (gal)	75.7 (20.0)
LUGGAGE SPACE, litres (cu ft)	535 (18.9)
CURB WEIGHT, kgs (lb)	1745 (3848)

Safety and Security

- Driver and front passenger air bag Supplemental Restraint System¹
- Driver and front passenger side-impact air bags¹
- 4-wheel disc Anti-lock Brake System (ABS)
- All-Speed Traction Control
- 3-point safety belts for front outboard and rear passengers including rear centre seat occupant¹
- Dual power-heated exterior mirrors with reverse tilt-down feature
- Remote Illuminated Keyless Entry system with panic button
- Electrochromic (auto-dimming) inside rearview mirror with compass
- SecuriLock™ passive anti-theft system
- Rear seat child safety door locks
- Front centre lap belt (6-passenger seating only)¹
- Front and rear crumple zones
- Heavy-gauge steel side door intrusion beams
- Home Safe transaxle
- Brake/shift interlock
- 2-way adjustable front seat head restraints
- Perimeter anti-theft alarm system
- Child safety seat tether anchor

Interior Amenities

- Memory driver's seat and mirrors
- Leather seating surfaces/leather-wrapped steering wheel
- 6-way power driver and front passenger recliners with memory driver seat and 2-way power lumbar adjustment
- Particulate air-filtration system
- CFC-free electronic automatic temperature control with sunload sensor
- Rear seat heat ducts
- Front and rear carpeted floor mats
- Rear window defroster
- Bird's-eye maple wood trim
- Power windows with driver-side express-down feature
- Power door locks with "SmartLock" feature
- Fingertip speed control (tap-up/tap-down feature)
- Tilt steering wheel
- Analog clock
- Virtual Image Instrument cluster with multi-function message centre
- Autolamp on/off delay lighting system
- Interior theater dimming lighting
- Solar-tinted glass
- High-level audio system with Premium AM/FM stereo/cassette
- Rear seat air-conditioning ducts (5-passenger seating only)
- 5-passenger seating with center console
- Rear seat centre folding armrest with cup holders
- Concealed radio antenna
- Delayed accessory power
- Overhead console with maplights, storage for sunglasses and tissue holder
- Battery saver
- Centre console power point (5 passenger)
- Easy entry/exit driver's seat

Exterior Features

- Quasi-dual exhaust with exposed bright tips
- 16-inch 10-spoke brushed aluminum wheels
- Flexible chrome grille/8-kph (5-mph) bumpers
- Bodyside protection moulding
- Extensive corrosion protection
- Single key entry/ignition
- Cornering lamps
- Keyless entry via owner coded keypad

¹Always wear your safety belt and secure children in the rear seat.
²Memory Profile System is standard with Driver Select System.

Options

- Luxury Appearance Package: chrome aluminum 6-spoke wheels, wood trim steering wheel, two-tone leather seating surfaces, unique front floor mats, chrome and argent grille
- Personal Security Package: SecuriTire™ System (zero-pressure tires, Pressure Alert tire sensing system), Programmable garage door opener
- Power moonroof
- 6-passenger seating with mini console
- Driver Select System: semi-active suspension, steering wheel audio/climate control, driver's side exterior auto-dimming mirror, Memory Profile System, selectable ride control
- 16-inch polished aluminum wheels
- Memory Profile System: steering effort, selectable ride control, driver's seat position, mirror position, autolamp delay setting, panel lighting setting, easy entry/exit driver's seat, express-down driver's window, auto door lock, door lock horn chirp, tilt-down exterior mirrors²
- Heated front seats with five temperature settings
- Integrated voice-activated portable/convertible cellular phone
- Alpine® Audio System with Digital Signal Processing and 8 speakers
- 6-disc CD changer
- 16-inch chrome 6-spoke aluminum wheels

Upholstery



Light Parchment

Medium Prairie Tan

Light Graphite

Deep Charcoal

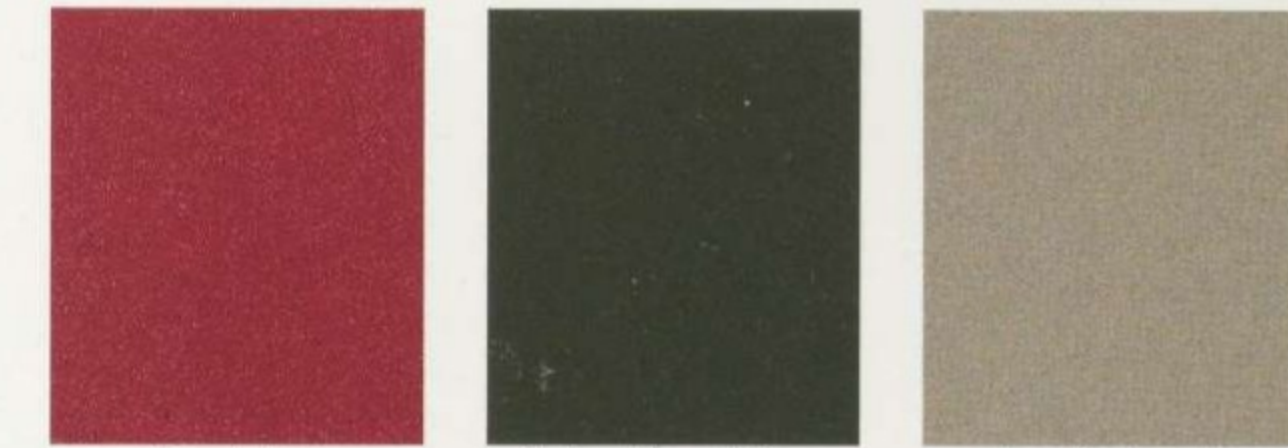
Paint



Medium Gold Clearcoat Metallic

Midnight Grey Clearcoat Metallic

Light Parchment Gold Clearcoat Metallic



Toreador Red Clearcoat Metallic

Medium Charcoal Green Clearcoat Metallic

Ivory Parchment Clearcoat (Tri-Coat)*



Graphite Blue Clearcoat Metallic

Deep Wedgewood Clearcoat Metallic

Silver Frost Clearcoat Metallic



Black Clearcoat

White Pearlescent Clearcoat Metallic (Tri-coat)*

Vibrant White Clearcoat

*Tri-coat body colours are an extra cost.

2000 Lincoln Town Car: True luxury, redefined for today.

The 2000 Lincoln Town Car's sense of style makes a powerful statement.

The V8 engine and abundance of luxurious appointments quietly confirms it.

*There is a heritage here. Sophistication and drama. It is the ultimate
in a full-sized luxury automobile.*



Lincoln Town Car Signature Series in Deep Wedgewood Blue Clearcoat Metallic. Some equipment shown may be optional.



Lincoln Town Car Executive Series in Graphite Blue Clearcoat Metallic. Some equipment shown may be optional.



Lincoln Town Car Cartier Series in Silver Frost Clearcoat Metallic.
Some equipment shown may be optional.



Lincoln Town Car Signature Series with Medium Parchment interior. Some equipment shown may be optional.



Lincoln Town Car Signature Series with Medium Parchment interior. Some equipment shown may be optional. Metric instrumentation is standard in Canada.

1. You will find the electronic fingertip speed control ergonomically located on Town Car's leather-wrapped steering wheel. Setting your speed can be done without ever taking your eyes off the road.

2. All Signature and Cartier Series Town Cars have driver-programmable memory seats and mirrors.

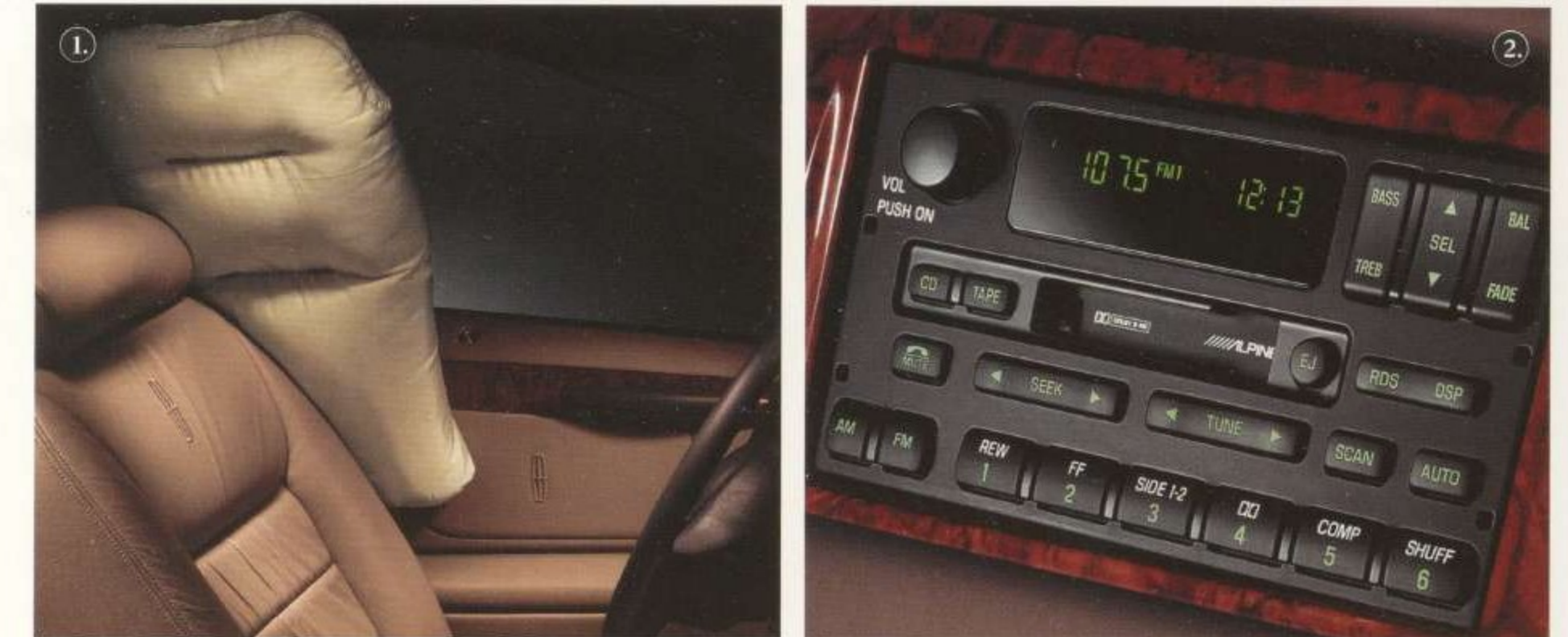


3. Automatic climate control and electronic message centre provide comfort and allow driver to monitor data such as outside temperature, average fuel economy, kilometers-to-empty and average trip speed. (Metric instrumentation is standard in Canada.)

4. Entering your Town Car involves higher security, thanks to the programmable keypad located on the driver's side door. Keyless entry is possible with your personalized identification number.

1. Side-impact air bags add another level of safety for Town Car owners and families. Standard on all models, these air bags help protect an occupant's head and chest in certain side collisions. Used with properly worn safety belts, they can provide driver and passengers with effective protection.

2. The 145-watt Alpine® Audio System (standard on Signature Series and Cartier Series) provides concert-hall sound through harmonically matched premium speakers. This system allows occupants to enjoy sound from any of fifteen preset radio stations or audiocassettes; CDs can be selected from the optional 6-disc console-mounted changer.



3. Elegant 16-inch wheels set off the Town Car's good looks. Each Series is fitted with a spoke design to match the vehicle's personality. Clockwise from top left: Snowflake aluminum (Signature); Gear Tooth aluminum (Executive); Chrome (Cartier) and Chrome-Tech aluminum (Signature Touring Sedan).

4. Each rear seat passenger gets a conveniently located cup holder in the centre armrest for easier access.

LINCOLN TOWN CAR FEATURES

All-Speed Traction Control helps improve Town Car's handling and steering on slippery surfaces by electronically and automatically modulating engine torque output and rear brake behaviour.

In the unlikely circumstance of a complete coolant loss, the fail-safe cooling system will still allow the Town Car to be driven for a short distance by invoking a reduced cylinder firing sequence.

No other North American luxury carmaker today goes to the trouble of building a full-length ladder-type frame.¹ This construction not only provides the Lincoln Town Car with added rigidity and stability, it offers greater passenger comfort as well — especially when the vehicle is fully loaded.

The SecuriLock™ passive anti-theft system uses a specially encoded key to help protect against theft. If a non-encoded key or ignition bypass is detected, the ignition automatically disables itself.

A technological breakthrough, the coil-on-plug electronic integrated ignition system with platinum-tipped spark plugs provides dependable spark sequences and eliminates the need for spark plug wires.

Even in bad weather, the Town Car's four-wheel disc anti-lock brakes contribute immeasurably to improved control during hard braking on a surprisingly wide variety of road surfaces.

A 71.9 litre (19 gallon) fuel tank provides nearly 725 convenient highway kilometers (450 miles) before refueling is necessary.

¹Excluding other products manufactured by Ford Motor Company.

LINCOLN TOWN CAR FEATURES

A wonderful match with the Town Car's powerful engine, a Watt's linkage rear suspension improves straight line tracking and handling, making the car a pleasure to drive, especially over long distances.

A remote Keyless Entry system comes standard, providing automatic lock activation and a "panic" button to set off the horn and marker lights in an emergency. Added security is also available in an autolamp feature. It keeps your headlamps lit for a preset period after you've switched the ignition off and left the car.

Cartier Series Town Cars come equipped with heated front seats. Seat temperature may be adjusted to any of five settings, an absolute must for those living in colder climate areas.

Heated exterior mirrors melt away bothersome ice and snow for better clarity and enhanced safety.

Standard on the Executive and Signature Series Town Cars, a 4.6L SOHC, single exhaust V8 provides 205 horsepower for effortless on-ramp acceleration and comfortable long distance cruising. For those choosing the Signature Touring Sedan Package and Cartier Series, Lincoln Town Cars come equipped with an even more potent 220 horsepower, dual exhaust engine.

An independent short- and long-arm front suspension enables each wheel to drive over road imperfections with minimal influence on other wheels. As a result, the ride is consistent and comfortable.

Drivetrain

ENGINE	
LAYOUT	Front engine, rear-wheel drive
TYPE	SOHC V8 with electronic engine control
DISPLACEMENT	4.6 litre/281 cu in
BORE & STROKE	90.2 mm x 90.0 mm/3.55 in. x 3.54 in.
COMPRESSION RATIO	9.0:1
HORSEPOWER	Executive and Signature Series 200 @ 4250 rpm (SAE net)
	Cartier Series and Signature Touring Sedan 215 @ 4500 rpm (SAE net)
TORQUE	Executive and Signature Series 275 lb-ft @ 3000 rpm (SAE net)
	Cartier Series and Signature Touring Sedan 285 lb-ft @ 3000 rpm (SAE net)
FUEL DELIVERY Sequential multi-port electronic fuel injection	
FUEL REQUIREMENT	87 octane unleaded (minimum)
IGNITION	Coil-on-plug integrated electronic ignition system
EXHAUST SYSTEM	Executive and Signature Series Single, stainless steel
	Cartier Series and Signature Touring Sedan Dual, stainless steel
TRANSMISSION	
TYPE	4-speed electronic automatic overdrive with overdrive lockout
AXLE RATIO	Executive, Signature and Cartier 3.08:1
	Signature Touring Sedan 3.55:1

Chassis

BODY	Body-on-frame
SUSPENSION	Front Independent short- and long-arm design with ball joints, stabilizer bar and coil springs
	Rear 4-bar Watt's linkage self-leveling air spring suspension and stabilizer bar
SHOCK ABSORBERS Gas-pressurized hydraulic	
STEERING	Type Power speed-sensitive, variable-assist
	Overall ratio 16.4:1 (on centre)
	Turns, lock-to-lock 3.4
	Turning circle, meters (ft.) 12.8 (42.0) diameter
WHEELBASE, mm (in)	2990 (117.7)
TRACK, mm (in)	Front/Rear 1610/1659 (63.4/65.3)
BRAKES	Front, mm (in) Power-assisted disc, 315 (12.4) diameter rotors, anti-lock
	Rear, mm (in) Power-assisted disc, 282 (11.1) diameter rotors, anti-lock
WHEELS 16-inch aluminum	
TIRES	Executive, Signature and Cartier P225/60SR16 black sidewall
	Signature Touring Sedan P235/60TR16 black sidewall

Accommodations and Dimensions

HEAD ROOM, mm (in)	996 (39.2) front; 952 (37.5) rear
OUTSIDE DIMENSIONS, mm (in)	1473 (58.0) height; 1986 (78.2) width; 5469 (215.3) length
LEG ROOM, mm (in)	1082 (42.6) front (max.); 1044 (41.1) rear (min.)
FUEL CAPACITY, litres (imp. gal)	71 (15.8)
HIP ROOM, mm (in)	1455 (57.3) front; 1473 (58.0) rear
LUGGAGE SPACE, litres (cu ft)	583 (20.6)
SHOULDER ROOM, mm (in)	1539 (60.6) front; 1532 (60.3) rear
CURB WEIGHT, kgs (lb)	1821-1887 (4015-4160)

Safety and Security

- Driver and front passenger air bag Supplemental Restraint System¹
- Driver and front passenger side-impact head/chest air bags¹
- 4-wheel disc Anti-lock Brake System (ABS)
- Remote Illuminated Keyless Entry system with panic button
- 3-point safety belts for front outboard and all rear passengers¹
- SmartLock™ anti-lockout system
- All-speed Electronic Traction Control
- SecuriLock™ passive anti-theft system
- Heavy-gauge steel side door intrusion beams
- Front and rear crumple zones
- Brake/shift interlock
- Dual power-heated exterior mirrors
- Rear door child safety locks
- Child safety seat tether anchor

Interior Amenities

- Dual illuminated visor vanity mirrors
- Autolamp on/off delay lighting system
- 40/20/40 front seat system with driver/passenger 8-way power seats, 2-way front head restraints
- CFC-free electronic automatic temperature control with sunload sensor
- Analog instrument cluster
- Rear seat heat and air conditioning ducts
- Fingertip speed control with tap-up/tap-down feature
- Power windows with driver-side express-down feature
- AM/FM stereo/cassette with Premium Sound
- Battery saver
- Tilt steering wheel
- Remote decklid and fuel-filler door release buttons on driver's door trim panel
- Leather-wrapped two-spoke steering wheel
- Leather seating surfaces
- Solar-tinted glass
- Power door locks
- Concealed radio antenna
- Ashtray-mounted cup holders
- Delayed accessory power
- Electronic message centre with Tripminder® and directional compass
- Front seatback map pockets
- Front and rear carpeted floor mats
- Courtesy lights and integral reflectors on front and rear doors
- Roof rail assist handles
- Automatic parking brake release
- Rear compartment reading lights
- Auxiliary 12-volt power outlet

Exterior Features

- Bodyside protection moulding
- Complex reflector headlamps with clear lenses
- Complex reflector taillamps
- Extensive corrosion protection
- Cornering lamps
- 8-kph (5-mph) bumpers front/rear
- Single key entry/ignition
- Dual power heated exterior mirrors

Options

- Electrochromic mirrors/compass group⁴
- Heated front seats with five temperature settings⁵
- 6-disc radio-controlled CD changer²
- Two-tone paint⁵
- Conventional spare tire with steel wheel
- Power moonroof²
- Premium Package: 6-disc CD changer, power moonroof²
- Integrated voice-activated portable/convertible cellular telephone²

Signature Series

In addition to Executive Series

- Easy entry/exit driver's seat
- Driver/passenger 8-way power seats with 2-way frontseat head restraints and dual power lumbar adjustment
- Memory mirrors/driver's seat for two drivers
- Universal garage door opener
- Electrochromic mirrors/compass group
- Leather-wrapped steering wheel with audio/temperature control buttons
- Snowflake aluminum wheels
- Alpine® Audio System with Digital Signal Processing and 9 speakers

Signature Touring Sedan Package

In addition to Signature Series

- P235/60TR16 radial tires
- 16-inch Chrome-Tech aluminum wheels
- 11.25-inch torque converter
- Revised springs, monotube shock absorbers, and 30 mm front and 18 mm rear stabilizer bars
- 3.55 axle ratio
- Unique badge
- Dual exhaust
- Perforated leather seating surfaces (inserts)
- Monotone lower bodyside cladding and facias
- Argent grille with chrome surround
- Black bird's-eye maple wood trim
- 6 exterior colours
- 3 interior trims

Cartier Series

In addition to Signature Series

- Wood- and leather-trimmed steering wheel with audio/temperature control buttons
- Heated front seats with five temperature settings
- Analog clock
- 16-inch Cartier chrome wheels
- Exclusive premium leather seat trim
- Dual exhaust system
- Gold package

Upholstery



Light Parchment



Medium Parchment



Light Graphite



Oxford White



Deep Slate Blue



Deep Charcoal

Paint



Autumn Red Clearcoat Metallic



Light Parchment Gold Clearcoat Metallic



Toreador Red Clearcoat Metallic



Ivory Parchment Clearcoat¹



Graphite Blue Clearcoat Metallic



Deep Wedgewood Blue Clearcoat Metallic



Medium Charcoal Green Clearcoat Metallic



Silver Frost Clearcoat Metallic



Midnight Grey Clearcoat Metallic



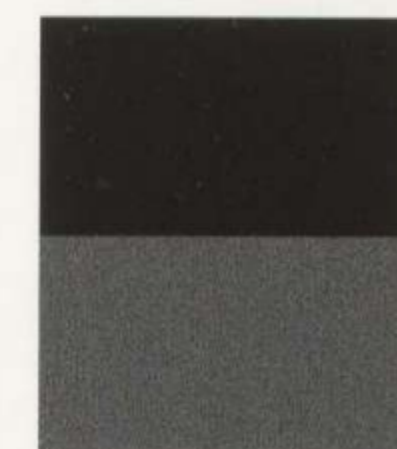
Black Clearcoat



White Pearlescent Clearcoat Metallic²



Vibrant White Clearcoat



Black Clearcoat/Medium Platinum Clearcoat Metallic



White Pearlescent Clearcoat Metallic/Light Parchment Gold Clearcoat Metallic



Vibrant White Clearcoat/Silver Frost Clearcoat Metallic

¹Always wear your safety belt and secure children in the rear seat. ²Available on Signature and Cartier Series. ³Available on Executive and Signature Series. ⁴Executive Series only ⁵Signature Series only.

¹Tri-coat paint available on Cartier Series. ²Extra cost tri-coat paint with Executive and Signature Series.



2000 Lincoln Navigator:
The rugged and refined way to travel.

The 2000 Lincoln Navigator is commanding and distinctive. An obvious leader.

Assertive, yet thoroughly civilized. It has the technologies that make the road smoother,

and the many amenities that make traveling more comfortable. It has a

flawless balance of power, control, confidence and luxury.

The Lincoln Navigator is the perfect escape.



Lincoln Navigator shown in Silver Clearcoat Metallic. Some equipment shown may be optional.



Lincoln Navigator shown in Black Clearcoat. Some equipment shown may be optional.



Lincoln Navigator shown in Black Clearcoat. Some equipment shown may be optional.





Some equipment shown may be optional. Metric instrumentation is standard in Canada.

1. Power flip rear quarter windows provide welcome additional ventilation for third row passengers. Another smart use of these windows would be as draft deflectors for front seat occupants. Controls are conveniently located in the overhead console, easily accessible to both driver and front passenger.

2. An available power moonroof welcomes in the sun, moon and the stars. Or just a touch of breeze if you like. Controls for the moonroof are conveniently located in the stylish, overhead mini console. The universal garage door opener remote control is incorporated into the sun visor and eliminates the need to fuss with old-fashioned, hand-held remotes.



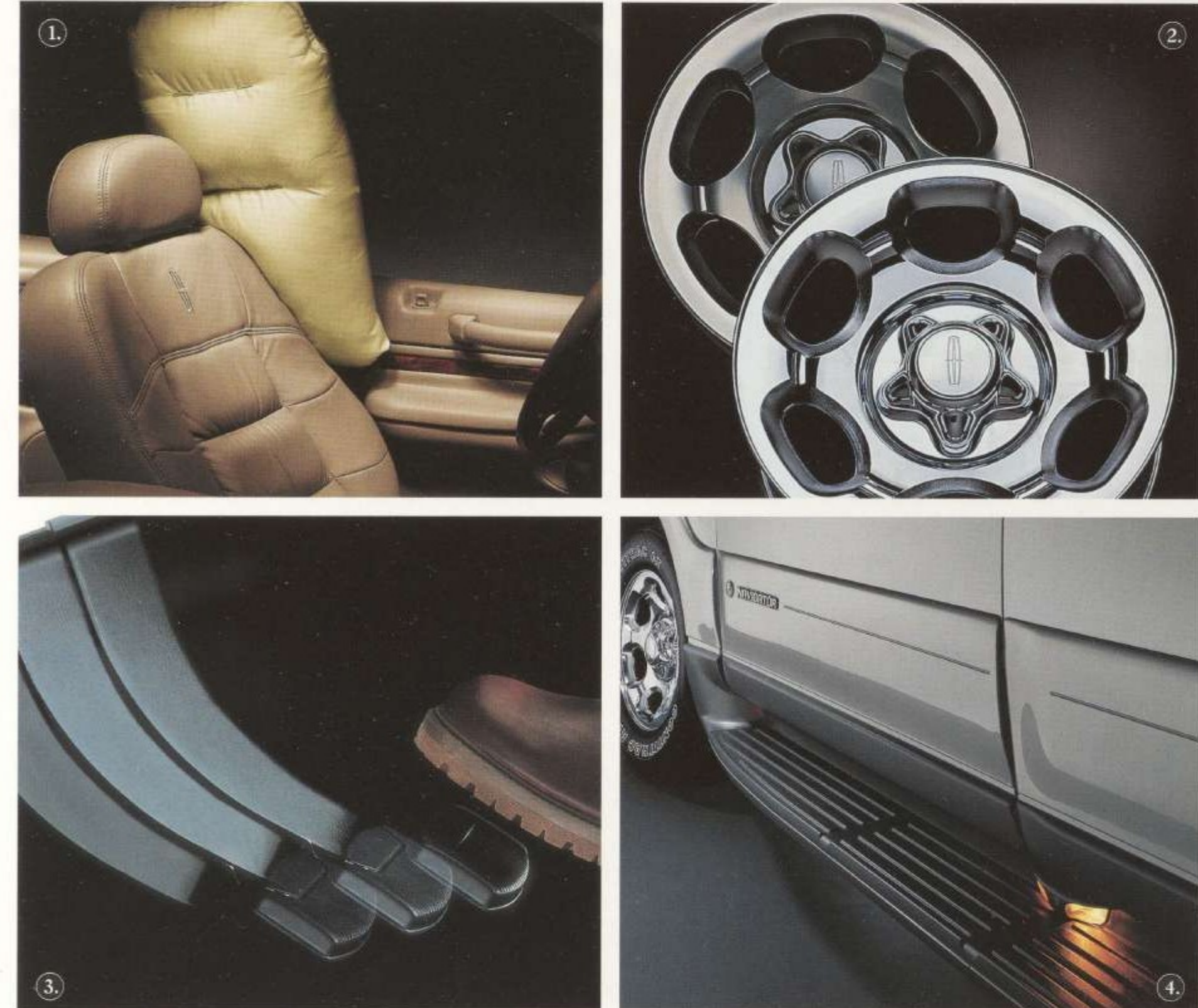
3. When backing up the Navigator, the driver benefits from the added security of Lincoln's reverse sensing system. Inside the cabin, a clearly audible warning signal increases in intensity as an object is approached, alerting the driver to use extra caution. The system may be disabled when backing up to recreational or boat trailers or in any controlled and high visibility circumstance.

4. Getting into your Navigator does not require a key. The user-programmable keypad on the driver's side door will unlock the car only after your personalized identification number has been entered. Never again will an inadvertently locked-in key have to cause delay, frustration or a service call.

1. Standard side-impact air bags add yet another level of safety and security for Navigator drivers and their families. When used with properly worn safety belts, they can help provide driver and front passenger with remarkably effective protection from injury in the event of a side collision.¹

¹Always wear your safety belt and secure children in the rear seat.

2. Seventeen-inch wheels contribute to Navigator's striking good looks. Left is the standard cast aluminum wheel; right is the available distinctive chrome cast aluminum wheel.



3. Power-adjustable brake and accelerator pedals allow drivers of varying heights and stature to assume the most comfortable driving position. Longitudinal pedal movement of 76 mm (three inches) allows the driver to occupy the most advantageous position relative to Navigator's front and side-impact air bags. Preferred pedal positions are retained in Navigator's memory system for instant recall.

4. Integrated illuminated running boards are standard. Extending from front to rear wheel on both sides of the vehicle, they lower the step-in height for easier entry and exit. Night use is facilitated by a centre dual light, aimed front and rear and activated by opening any door.

LINCOLN NAVIGATOR FEATURES

In the secondary and back seating areas, luxury extends beyond soft leather trim to climate control. Through a clever use of duct passages, temperate air reaches every passenger, courtesy of the Auxiliary Climate Control. For ease of adjustment, it is conveniently located at the rear of the centre console.

For added peace of mind, the SecuriLock™ passive anti-theft system uses an encoded key to help protect against theft. If a nonencoded key or ignition bypass is detected, the ignition disables itself.

In the unlikely event of complete coolant loss, the fail-safe cooling system switches from eight-cylinder operation to alternating banks of four cylinders. The disabled cylinders help to lower engine temperature. This allows the Navigator to be driven to a safe exit off the road or to a service depot.¹

¹Distance varies depending on speed, load and ambient temperature.

Exterior mirrors heat quickly to melt ice and snow, for enhanced clarity. They tilt down automatically when shifting into reverse, aiding curb visibility for better parking and maneuverability. Additionally, a prominent turn signal appears on the mirror's surface when the turn indicator is activated. This signal is visible to traffic behind as an additional reminder that a turn is being made.

Gracing the elegant wood- and leather-trimmed steering wheel are duplicate controls for cabin climate, audio as well as speed adjustments. Your hands can stay on the wheel and your eyes on the road.

The second-row bucket seats can be quickly folded down flat in four easy steps, following clear instruction diagrams. This increases Navigator's available cargo area to accommodate oversized items.

Navigator uses the Control-Trac™ 4WD system to select one of three different modes to accommodate varying on-road conditions. A rotary switch, within easy reach, facilitates on-the-fly selection. With the appropriate setting, Navigator can get through just about anything.

LINCOLN NAVIGATOR FEATURES

Standard equipment on Navigator's four-wheel disc anti-lock brakes contribute to improved control by reducing wheel lockup during hard braking on most surfaces.

Navigator's tiplfold third-row bench seat can be repositioned or removed, depending on the family's needs, easily and quickly accommodating extra passengers or extra cargo.

Colour-keyed bodyside cladding and wheel lip mouldings not only add a nice grace note to the Navigator's exterior, they also help protect it from road debris damage and parking lot "accidents."

Navigator's powerful and responsive 5.4L 32-valve DOHC InTech™ V8 engine delivers a very impressive 300 horsepower along with 355 lb-ft of torque.

Lincoln Navigator's four-wheel drive system allows you to shift on the fly simply by turning a switch on the instrument panel. The "Automatic" setting chooses between two- or four-wheel drive as road conditions dictate. 4WD "High" is ideal for traversing snow, ice, shallow mud and sand at normal speeds. 4WD "Low" works best at speeds below 56 kph (35 mph) where the terrain is rugged or steep.

Attentive design has improved even the humble windshield wiper. Because the Navigator's wipers are speed-sensitive, they automatically adjust their speed in relation to the vehicle's road speed. The result is enhanced visibility under adverse conditions without the need for constant adjustment.

Drivetrain

ENGINE	
LAYOUT	Front engine, 4-wheel drive
TYPE	DOHC 32-valve InTech™ V8 with electronic engine control system
CONSTRUCTION	Cast iron block with aluminum heads
DISPLACEMENT	5.4 litres/330 cu in
BORE & STROKE	90.2 mm x 105.8 mm/3.5 in. x 4.17 in.
COMPRESSION RATIO	9.5:1
HORSEPOWER	300 @ 5000 rpm (SAE net)
TORQUE	355 lb-ft @ 2750 rpm (SAE net)
AIR INDUCTION SYSTEM	Long runner intake with tuned plenum
FUEL DELIVERY	Sequential multi-port electronic fuel injection
FUEL REQUIREMENT	87 octane (minimum)
COOLING SYSTEM	Fail-safe cooling
TRANSMISSION AND TRANSFER CASE	
TYPE	4-speed electronic automatic overdrive with overdrive lockout
AXLE RATIO	3.73:1 (limited slip differential)
CONTROL-TRAC™ 4WD SYSTEM	Electronically controlled

Chassis

BODY	Body on fully boxed ladder frame construction
SUSPENSION	Front: Independent short- and long-arm suspension with stabilizer bar and torsion bar; Rear: Five-link load-leveling with stabilizer bar and air springs
SHOCK ABSORBERS	Front: Load-leveling air; Rear: Gas-pressurized
AIR SUSPENSION	Height-adjustable and four-corner load-leveling system
STEERING	Type: Variable power-assisted, recirculating ball, speed-sensitive
	Overall ratio: 16.5:1
	Turning circle, metres (ft.): 12.3 (40.5) diameter
WHEELBASE, mm (in)	3023 (119.0)
TRACK, mm (in)	Front: 1661 (65.4)
	Rear: 1664 (65.5)
BRAKES	Power-assisted four-wheel disc anti-lock
WHEELS	17-inch cast aluminum
TIRES	P255/75R x 17
CURB WEIGHT, kgs (lbs)	2595 (5722)
GROUND CLEARANCE, mm (in)	216 (8.5)

Towing

CLASS	Class III/IV with load-distributing hitch receiver
TRAILER WEIGHT, kgs (lbs)	3674 (8100) max.
TONGUE WEIGHT, kgs (lbs)	3674 (8100) max. (class IV)
STANDARD EQUIPMENT	7-pin trailer wiring harness; heavy-duty flashers; Class III hitch receiver (frame-mounted); auxiliary transmission oil cooler

Accommodations and Dimensions

HEAD ROOM, mm (in)	Front - 1011 (39.8)
	2nd Row - 1011 (39.8)
	3rd Row - 892 (35.1)
LEG ROOM, mm (in)	Front - 1087 (42.8)
	2nd Row - 1008 (39.7)
	3rd Row - 686 (27.0)
HIP ROOM, mm (in)	Front - 1554 (61.2)
	2nd Row - 1582 (62.3)
	3rd Row - 1516 (59.7)
SHOULDER ROOM, mm (in)	Front - 1621 (63.8)
	2nd Row - 1636 (64.4)
	3rd Row - 1694 (66.7)
OUTSIDE DIMENSIONS, mm (in)	Height - 1948 (76.7)
	Width - 2029 (79.9)
	Length - 5202 (204.8)
FUEL CAPACITY, litres (imp. gals)	113 (25)
CARGO VOLUME, litres (cu ft)	3112 (109.9) ¹

Safety and Security

- Driver and front passenger dual air bag
- Supplemental Restraint System (SRS)²
- Driver and front passenger side-impact air bags
- 4-wheel disc Anti-lock Brake System (ABS)
- 3-point safety belts for outboard passengers with adjustable shoulder D-rings for first and second rows
- LED centre high-mount stop lamp
- Inertia fuel pump shut-off switch
- Power adjustable pedals with memory
- Remote Keyless Entry with panic button, illuminated entry, and driver's door keypad
- Child safety locks on rear doors
- Child safety seat tether for second- and third-row seats
- Speed-sensitive intermittent front windshield wipers
- Side-impact door beams
- SecuriLock™ passive anti-theft system

Interior Amenities

- Quad bucket seating with leather seating surfaces
- Removable third-row bench seat with leather seating surfaces and easy install/remove roller system
- Dual power front low-back bucket seats with manual lumbar memory setting driver's seat, exterior mirrors and adjustable pedals
- Wood- and leather-wrapped steering wheel with tilt, speed control, and duplicate controls for climate and audio
- Electrochromic rearview mirror
- Power adjustable pedals with memory
- Battery saver
- Front and rear floor mats
- Automatic on/off headlamps
- Auxiliary climate control for rear occupants
- Skid plate package
- First-row floor console with storage, cup holders, rear audio and climate controls, rear power point
- Full overhead console including map lights, power quarter window switches, electronic display and storage
- Power windows and locks with illuminated controls and one-touch-down driver's window controls
- Premium ALPINE AM/FM stereo/cassette/radio/6 disc CD changer with remote controls on the steering wheel and second row
- Accessory delay
- CFC-free electronic automatic temperature control
- Remote Keyless Entry system
- Multi-function instrument cluster
- Heated driver and front passenger seats
- Reverse Sensing System

Exterior Features

- Wraparound complex reflector headlamps
- Complex reflector fog lamps
- Colour-keyed bodyside cladding and wheel lip mouldings
- Integrated illuminated running boards
- Solar-tinted glass with privacy glass on rear doors, quarter windows and back light
- Front fascia-integrated tow hooks
- Complex reflector taillamps
- Wraparound front and rear bumper fascias
- Power heated outside mirrors with memory and turn indicator
- 17-inch aluminum wheels
- Bright liftgate applique with complex reflector backup lights
- Bright accent luggage rack, beltline and door handles

Options

- Second-row 60/40 split bench seat with leather seating surfaces
- Hands-free portable cellular telephone
- Power moonroof
- 17-inch chromed wheels

Upholstery

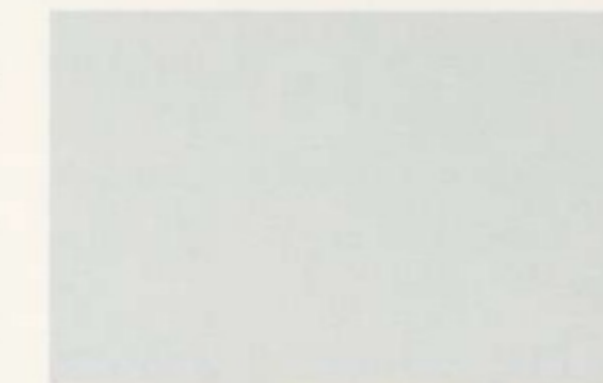


Medium Graphite



Medium Parchment

Paints



Oxford White Clearcoat



Medium Charcoal Blue Clearcoat Metallic



Dark Toreador Red Clearcoat Metallic



Black Clearcoat



Medium Charcoal Green Clearcoat Metallic



Light Parchment Gold Clearcoat Metallic



Silver Clearcoat Metallic

¹1790 (63.2) behind 2nd row with 3rd row seat removed; 555 (19.6) behind 3rd row. ²Always wear your safety belt and secure children in the rear seat.



The Lincoln Experience

Seventy-eight years ago, Lincoln's commitment to excellence defined what a luxury vehicle should be. That commitment to excellence – to the art and science of building fine automotive products – continues today.

It begins with superbly designed and engineered vehicles. It continues with The Lincoln Commitment, a remarkable array of warranties, services and programs. And it culminates in a driving and ownership experience that is second to none.



The Lincoln Commitment

The Lincoln Commitment is a comprehensive owner benefits package designed to provide drivers with services to support their every driving need. Services include:

No Charge Scheduled Maintenance

Provides scheduled maintenance at no additional cost to original retail owners and lessees of 1998 - 2000 Model Lincoln vehicles. Benefits include up to 16 scheduled maintenance services during the vehicle's original ownership period.

Lincoln Roadside Assistance

By calling 1-800-387-9333, Lincoln Roadside Assistance will provide 24-hour assistance for towing, jump-starting, lock-out service, gas delivery and tire change anywhere in Canada and U.S. for 4 yrs./80,000 kilometres.

Emergency Travel Expense Reimbursement

If your automobile is disabled more than 160 kilometres from home due to a collision or mechanical failure of any component covered under the New Vehicle Limited Warranty, The Lincoln Commitment will provide reimbursement up to \$1,000 to cover your emergency expenses incurred within three (3) days of the date of the disablement. Reimbursable expenses include local lodging, meals, car rental, and travel.*

** Your residence address as shown on our records prior to the disablement.*

Travel Planning Service

Lincoln Commitment can provide Lincoln drivers with comprehensive travel information, including a choice of the most direct, time-saving route to your destination or a more leisurely paced, scenic route.

Quest International

As a Lincoln Owner, customers will automatically receive a complimentary membership in Quest® International which entitles you to travel-related discounts.



The Lincoln Centre


Should you require any additional general information, please call The Lincoln Centre toll free at 1-800-387-9333 for prompt, courteous assistance or visit our web site at www.lincolnvehicles.com

Ask Your Lincoln Dealer

Following the publication of this catalogue, certain changes in standard equipment, options, prices or product delays may have occurred which would not be included in these pages.

Ford Motor Company of Canada, Limited, reserves the right to make these changes without incurring obligations of any kind. Your Lincoln Dealer is your best source for up-to-date information.



 Proud sponsor of the Canadian Breast Cancer Foundation





LINCOLN
American Luxury.