



LINCOLN

2000 LS



2000 *Lincoln LS*
Motor Trend Car of the Year

4. Heart, soul, spirit

Going to extremes **8.**

14. Cool, calm and collected

18. Wood, leather

20. Adrenaline

Inner strengths **24.**

28. Personal bests

Winning finish **36.**



A powerful new idea

is finally unleashed.

Here is something to

sharpen the senses

and move the soul.

There's an edge to it.

It is cutting. Leading.

It is the Lincoln LS.

American Luxury.

Bursting on the scene.





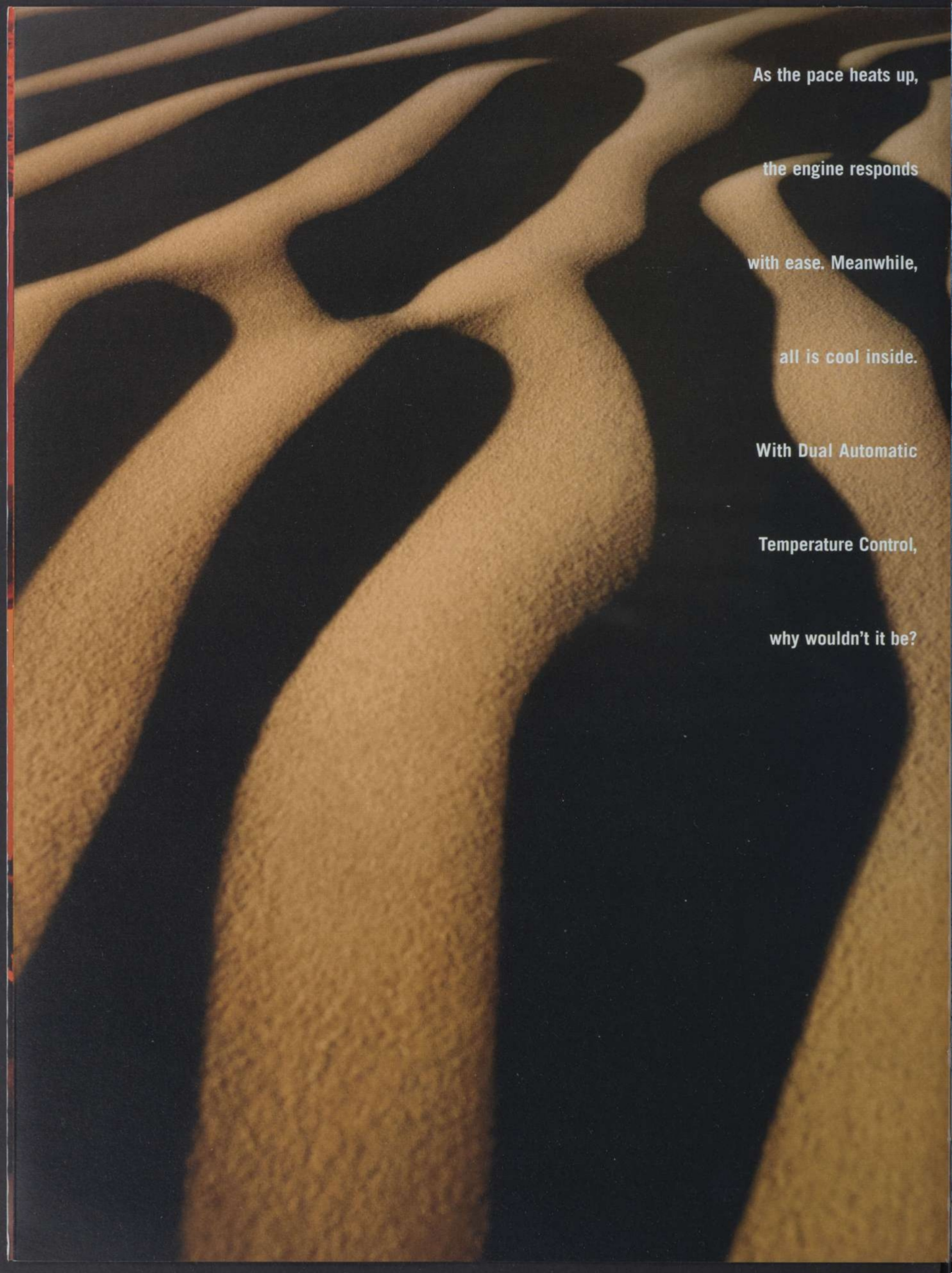
Lincoln LS in Silver Frost Clearcoat Metallic. Shown with available equipment.







Lincoln LS in Silver Frost Clearcoat Metallic. Shown with available equipment.

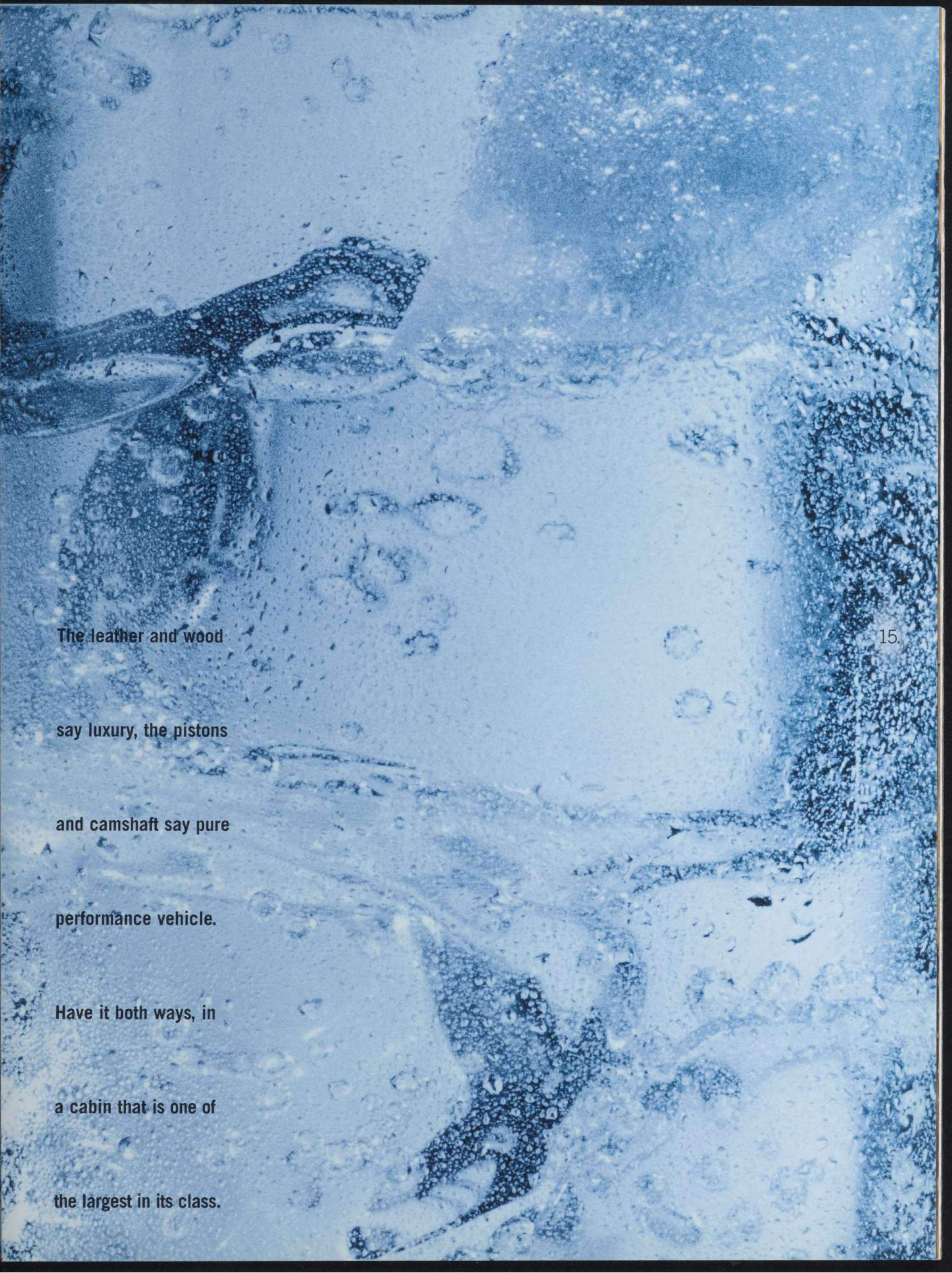


As the pace heats up,
the engine responds
with ease. Meanwhile,
all is cool inside.

With Dual Automatic

Temperature Control,

why wouldn't it be?



The leather and wood

say luxury, the pistons

and camshaft say pure

performance vehicle.

Have it both ways, in

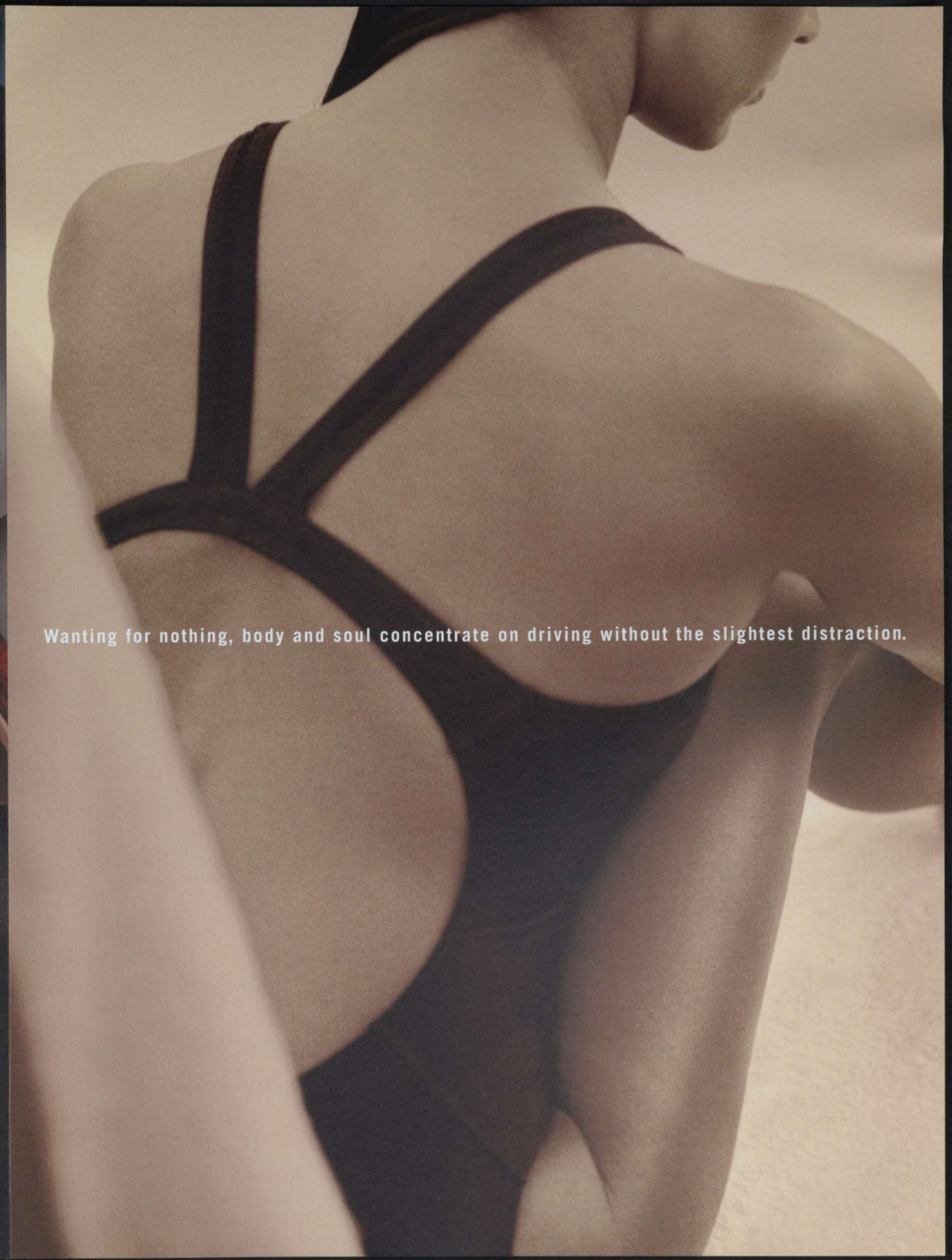
a cabin that is one of

the largest in its class.



All the resources you could possibly desire, each available at the precise moment you need it.

Lincoln LS with Medium Parchment interior. Shown with available equipment.



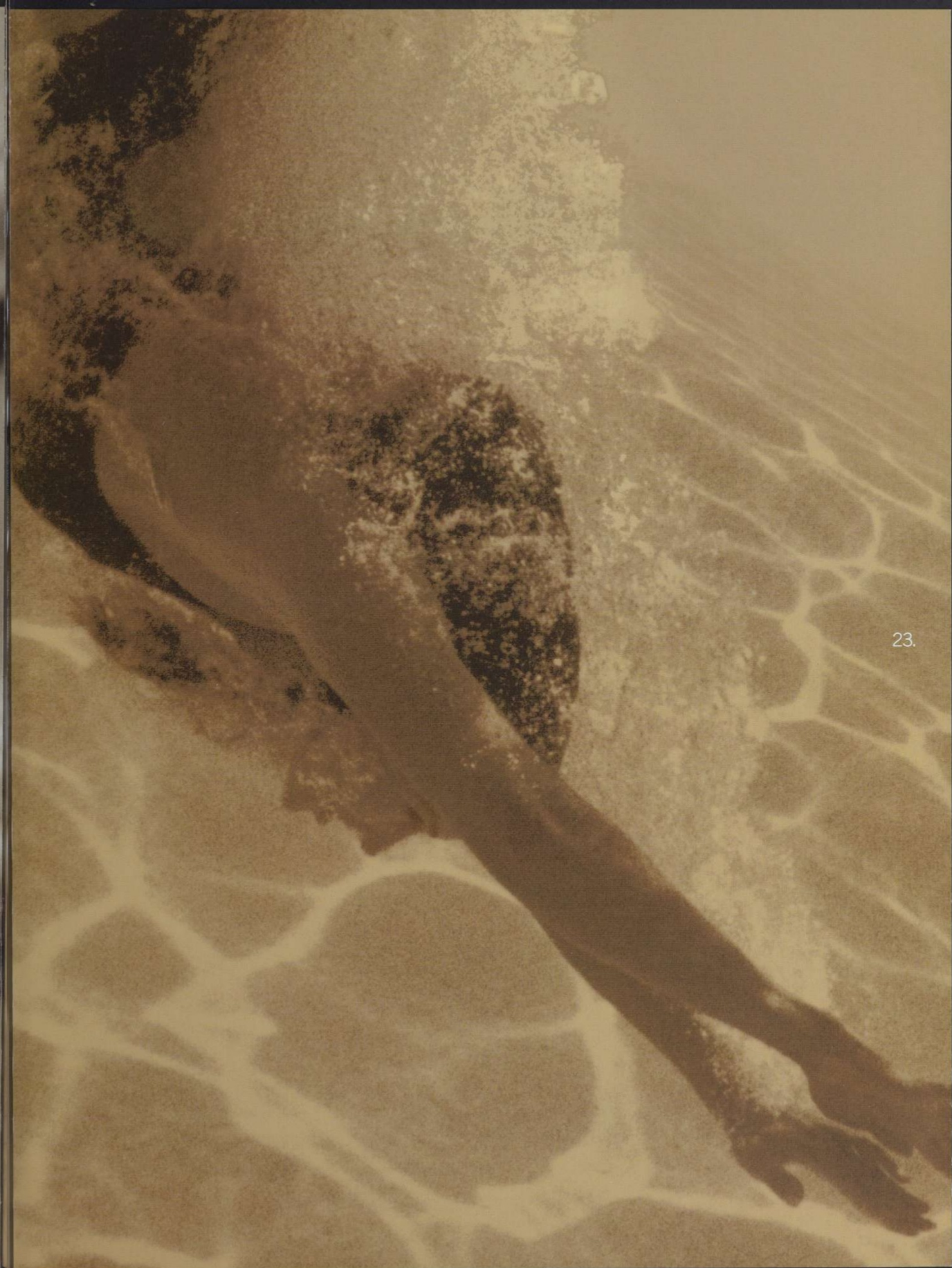
Wanting for nothing, body and soul concentrate on driving without the slightest distraction.



It asserts itself boldly. Competes globally. Moves decisively. Via 24-valve, 210 horsepower V6 or 32-valve, 252 horsepower V8. With design supervision by Lincoln's Global Technology team, the new powerplants are meticulously engineered. So is the new suspension by way of Formula 1 and CART racing programs.



Incurable enthusiasts will demand the crisp 5-speed manual transmission powered by the authoritative V6. Other drivers can choose an impressive automatic mated to either the V6 or V8 engine or our available SelectShift Automatic.[™] LS steering and braking are up to the same high standards as the engines and transmissions.





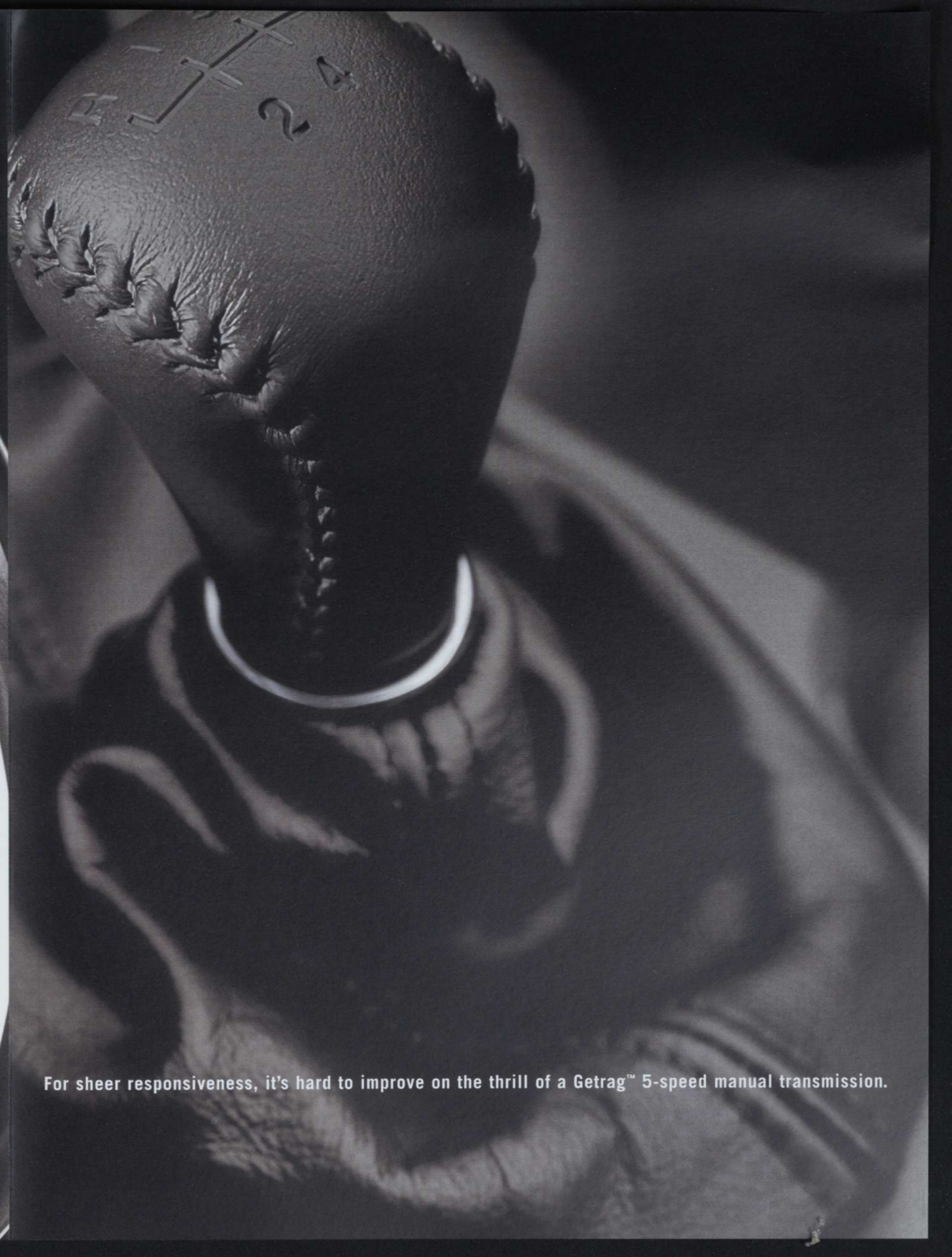
What better way to accentuate the sharp, crisp lines of a steel suit than with the perfect accessories?



Self-assured. Confident. Assertive, but not at all brash. Flawlessly synchronized with its owner's every desire.



Lincoln LS engines capable of maintaining autobahn speeds deserve brake rotors nearly a foot in diameter.



For sheer responsiveness, it's hard to improve on the thrill of a Getrag™ 5-speed manual transmission.

Rich, supple leather seating surfaces, standard on all Lincoln LS vehicles, reflect the high-quality craftsmanship and attention to detail so obvious everywhere else in the vehicle's construction.

An available power moonroof¹ welcomes in the sun, moon and the stars, or just a breeze. Global Open conveniently opens all side windows and moonroof simultaneously with either the exterior key cylinder or remote key fob, while Global Close may be implemented via the key cylinder.

¹Not available on V6 manual.



Another standard luxury is the way our engineers arranged the controls. Speed control, audio system and optional cellular microphone can all be accessed on the steering wheel for "eyes-on-the-road" convenience. What's more, the power-operated steering wheel itself tilts and telescopes.

Standard on V8 models, the Electronic Message Center allows the driver a quick, convenient way to obtain information on vital engine systems, maintenance requirements and fuel availability.

As part of Lincoln's standard safety package, side-impact head/chest airbags¹ provide added protection for both the driver and front passenger. Cleverly concealed in the front seatback side bolsters, the airbags' deployment is governed by sensors mounted on each side of the vehicle.

¹Always wear your safety belt and secure children in the rear seat.

Models equipped with the available Sport Package and SelectShift Automatic[™] allow the driver to switch from fully automatic to step-up and step-down shifts with a simple tap of the lever.



Dual Automatic Temperature Control allows driver and front passenger to enjoy different temperature settings. If one side is getting more sun, sensors respond and regulate the temperature accordingly.

Handsome 5-spoke 17-inch aluminum wheels are standard on the manual or available on automatics with the Sport Package; 16-inch bright machined aluminum wheels are standard on automatics; 16-inch highly polished aluminum wheels are elegant options to consider to dress up the Lincoln LS.

The near **50/50 weight distribution** in the Lincoln LS helps provide the vehicle's excellent front-to-rear balance, contributing to stability, agility, traction and, therefore, improved driver confidence.

Special optional¹ sensors detect moisture accumulation on the windshield and then automatically activate slow or fast wiper motion accordingly. These **moisture-sensing windshield wipers** will work in virtually any kind of weather thanks to the heated area where the wipers reside.

¹Standard on V8 models.

The optional **Remote Emergency Satellite Cellular Unit (RESCU™)** gives instant access to roadside emergency service and travel information via two overhead console buttons. Lincoln RESCU includes an onboard electronic module, a cellular telephone and a global positioning satellite antenna. RESCU requires cellular phone service and is available on Lincoln LS V8 models.

Available on Lincoln LS with automatic transmissions, the **AdvanceTrac™** Interactive Vehicle Dynamics control system monitors speed, road conditions, vehicle lean and steering, controlling each wheel for maximum stability. Directional sensor input lets AdvanceTrac adjust brake forces at each wheel, helping to prevent excessive yaw and wheel spin around corners.

All models come with a standard **Anti-Lock Braking System**. This system is enhanced by Electronic Brake Force Distribution (EBD), which provides ABS-derived electronic proportioning of brake action. This allows compensation for various vehicle loads, promoting far better braking precision.

An all-new **SelectShift Automatic™** transmission is included with the Sport Package on automatic models. Once the gear lever is in SelectShift mode, either change up a gear by pushing the lever forward or change down by pulling the lever back. You can easily revert back to the fully automatic mode at any time. The 5-speed Getrag™ manual transmission is available with the V6 engine.

While the front suspension is an independent short- and long-arm design with anti-dive properties, the **independent SLA** rear has anti-lift geometry. This optimized suspension and low unsprung weight means the Lincoln LS stays close to the road under braking for better driver confidence.

When you purchase a Lincoln LS model with the **autolamp** feature, the parking lamps and low-beam headlights will automatically turn on in response to low ambient light. Then, when the car's ignition is switched off, the lamps will stay on up to 3 minutes to help you exit safely.

For those who prefer premium sound from compact discs, Lincoln LS offers two options: **radio-controlled 6-disc changer** mounted in the glove compartment or an integrated audio system mounted in the dash¹ capable of accepting up to 6 CDs and featuring full random-play.

¹Late availability.

A **Remote Keyless Entry System** comes as standard equipment on every V6 and V8 Lincoln LS model, providing automatic lock activation and a "panic" button to set off horn and marker lights in an emergency. After you've exited, further security is provided by the autolamp feature.

The **coil-on plug electronic ignition** provides dependable spark sequences as well as much more effective combustion chamber detonation. It also eliminates the need for any spark plug wires.

A 3.0 liter, dual overhead cam **24-valve V6** provides an impressive 210 horsepower. The engine's block and cylinder head are cast with the patented Cosworth process, yielding a light-weight, durable and efficient powerplant that is designed to run 100,000 miles before a scheduled tune-up, under normal driving conditions and with regular fluid and filter changes.

A 3.9 liter, dual overhead cam **32-valve V8** gets more serious with 252 horsepower. This is also an aluminum block, Cosworth-casting process engine, lightweight and durable like the V6. And like the V6, it is fitted with a dual exhaust system and is designed to run 100,000 miles until the first scheduled tune-up, provided you make all the recommended fluid and filter changes.¹

¹Under normal driving conditions with regular fluid and filter changes.

All-Speed Traction Control¹ helps to maintain traction on a wide variety of slippery surfaces. It achieves this by electronically modulating engine torque and brake behavior to limit wheel spin, while ABS detects and prevents wheel lockup, helping the driver to maintain steerability.

¹Standard on automatics.

Dual **driver's seat memory** settings allow two different preset positions. For further comfort and convenience, both driver's seat and steering column move up and back slightly for easy entry and exit.

Drivetrain

ENGINE		
LAYOUT		Front engine, rear-wheel drive
TYPE	V6	DOHC 24-valve V6 with aluminum block and cylinder heads
	V8	DOHC 32-valve V8 with aluminum block and cylinder heads
DISPLACEMENT	V6	3.0 liter/181 cu in
	V8	3.9 liter/240 cu in
BORE & STROKE	V6	89.0 mm x 79.5 mm/3.5 in. x 3.13 in.
	V8	86.0 mm x 85.0 mm/3.39 in. x 3.35 in.
COMPRESSION RATIO	V6	10.5:1
	V8	10.55:1
HORSEPOWER	V6	210 @ 6500 rpm (SAE net)
	V8	252 @ 6100 rpm (SAE net)
TORQUE	V6	205 lb-ft @ 4750 rpm (SAE net)
	V8	267 lb-ft @ 4300 rpm (SAE net)
FUEL DELIVERY		Sequential multi-port electronic fuel injection
FUEL REQUIREMENT		91 octane (recommended)
EXHAUST SYSTEM		Full dual exhaust with separate catalytic converters, mufflers and resonators for each cylinder bank
TRANSMISSION		
TYPE		5-speed Getrag™ manual, 5-speed electronic automatic overdrive or SelectShift Automatic™ transmission

Chassis

BODY		Unitized construction with front and rear subframes
SUSPENSION	Front	Independent, aluminum short- and long-arm with coil springs, tubular stabilizer bar and anti-dive geometry
	Rear	Independent, aluminum short- and long-arm with coil springs, solid stabilizer bar and anti-lift geometry
SHOCK ABSORBERS	Front	Gas-charged hydraulic twin tube with integral rebound springs
	Rear	Gas-charged hydraulic twin tube
STEERING	Type	Speed-sensitive variable power-assisted rack-and-pinion
	Turns, lock-to-lock	3.0
	Turning circle, curb-to-curb	38.06 ft diameter
WHEELBASE		114.5 in.
TRACK	Front	60.5 in.
	Rear	60.8 in.
BRAKES	Front	Power anti-lock with vented discs (300 mm dia.) and dual-piston aluminum calipers
	Rear	Power anti-lock with vented discs (288 mm dia.) and single-piston aluminum calipers
WHEELS	V6 and V8 automatic	16-inch 5-spoke bright machined aluminum
	V6 manual	17-inch 5-spoke super silver aluminum
TIRES	V6	P215/60HR16 (automatic), P235/50VR17 (manual)
	V8	P215/60VR16
CURB WEIGHT	V6	3593 lb (automatic), 3598 lb (manual)
	V8	3692 lb

Accommodations and Dimensions

HEADROOM (in.)	38.6 front; 36.7 rear ¹	SHOULDER ROOM (in.)	57.7 front; 57.0 rear
HEADROOM (in.)	40.4 front; 37.5 rear	OUTSIDE DIMENSIONS (in.)	56.1 height; 73.2 width; 193.9 length
LEGROOM (in.)	42.8 front (max.); 37.4 rear (min.)	FUEL CAPACITY (gal)	18.0
HIPROOM (in.)	53.0 front; 54.4 rear	CARGO VOLUME (cu ft)	13.5 with 5-seat mode configuration

Safety and Security

- Driver and front passenger airbag Supplemental Restraint System²
- Driver and front passenger side-impact head/chest airbags²
- Brake/shift interlock
- Remote Keyless Entry with panic button, illuminated entry and Global Open for side windows and optional moonroof
- Emergency interior trunk lid release

¹With optional moonroof. ²Always wear your safety belt and secure children in the rear seat. ³N/A with manual transmission. ⁴N/A with V6 manual or V8 with Sport Package.

Safety and Security (continued)

- 4-wheel disc Anti-lock Brake System (ABS) with Electronic Brake Force Distribution (EBD)
- All-Speed Traction Control³
- 3-point safety belts for all five seating positions
- Anti-intrusion side door beams
- SecuriLock™ passive anti-theft system
- SmartLock™ anti-lockout system
- Child-safety rear door locks
- Child-safety rear seat tether anchors
- Dual power-heated exterior mirrors
- LED center high-mount stop lamp
- 2-speed windshield wipers with variable intermittent action and heated park position
- Perimeter alarm with LED indicator

Interior Amenities

- 8-way power driver and 6-way power passenger front seats
- 60/40 split fold-down rear bench seat
- Leather seating surfaces
- Exterior temperature display
- Wood and leather-wrapped steering wheel (N/A with Sport Package)
- Tilt and telescoping steering wheel with speed control and duplicate audio controls
- Dual Automatic Temperature Control with dual sunload sensors
- Premium AM/FM stereo/cassette with RDS, clock, speed-compensated volume control and 4 speakers
- Multi-function analog instrument cluster
- Automatic on/off delay headlamps
- Rear "Theatre Seating"
- Front and rear cupholders
- Power windows and locks with illuminated controls and express-down driver's window
- Accessory delay
- Electronic Message Center (standard on V8 model)
- Speed control with tap-up/tap-down features
- Front and rear carpeted floor mats
- Center console with storage

Exterior Features

- Wraparound complex reflector headlamps and taillamps
- Fog lamps
- Global Open/Close for windows and optional moonroof
- Wraparound front and rear bumper fascias
- Remote electric decklid release
- Dual exhaust
- 16-inch five-spoke bright machined aluminum wheels

Options

- Heated driver and front passenger seats
- Alpine® Audiophile Sound System with 12 premium speakers, 85-watt subwoofer and speed-compensating volume control⁴
- Premium 6-disc CD changer (mounted in glove compartment)
- 16-inch five-spoke highly polished aluminum wheels
- AdvanceTrac™ stability enhancement system³
- Power moonroof³
- Lincoln RESCU™ Emergency Messaging System (V8 only; requires cellular phone service)
- Hands-free portable cellular telephone with steering wheel-mounted microphone
- Integrated 6-disc CD/radio mounted in dash (late availability)

Sport Package

- Standard with V6 manual, optional with V6 and V8 automatics
- 17-inch five-spoke super silver aluminum wheels
 - P235/50VR17 tires
 - Sport suspension tuning
 - Conventional spare tire with matching aluminum wheel
 - SelectShift Automatic™ transmission³
 - Monochromatic body-colored front and rear bumpers
 - Engine oil cooler
 - Leather-wrapped tilt and telescoping steering wheel with speed control, duplicate audio controls and leather shift knob

Convenience Package

- Standard with V8 automatic, optional with V6 manual and automatic
- Electrochromic interior rearview mirror
 - HomeLink® Universal Garage Door Opener
 - Moisture-sensitive windshield wipers
 - Memory steering wheel and exterior mirrors
 - 8-way power driver seat with 2-driver memory recall
 - Power driver and front passenger lumbar adjustment



Motor Trend Car of the Year



FORD CREDIT

Ford Credit provides the convenience of one-stop shopping with a variety of simple-to-understand purchase or Red Carpet Lease programs available right at the dealership. For more information, ask your dealer for details, or visit us on the web at www.fordcredit.com



100% TOTAL RECOVERED FIBER
100% POST-CONSUMER FIBER

For additional information please visit our website: www.lincolnvehicles.com

Following publication of this brochure, certain changes in standard equipment, options, prices and the like, or product delays may have occurred which would not be included in these pages. Your Lincoln dealer is your best source for up-to-date information. Lincoln reserves the right to change product specifications at any time without incurring obligations. 2000 EPA mileage estimates were unavailable when this brochure was printed. Options shown or described in this brochure are available at extra cost and may be offered only in combination with other options or subject to additional ordering requirements or limitations. Information based on published specifications.

Its stance has poise,

balance. Its speed shows

grace, style. Still or

moving, it is a powerful

portrait of luxury

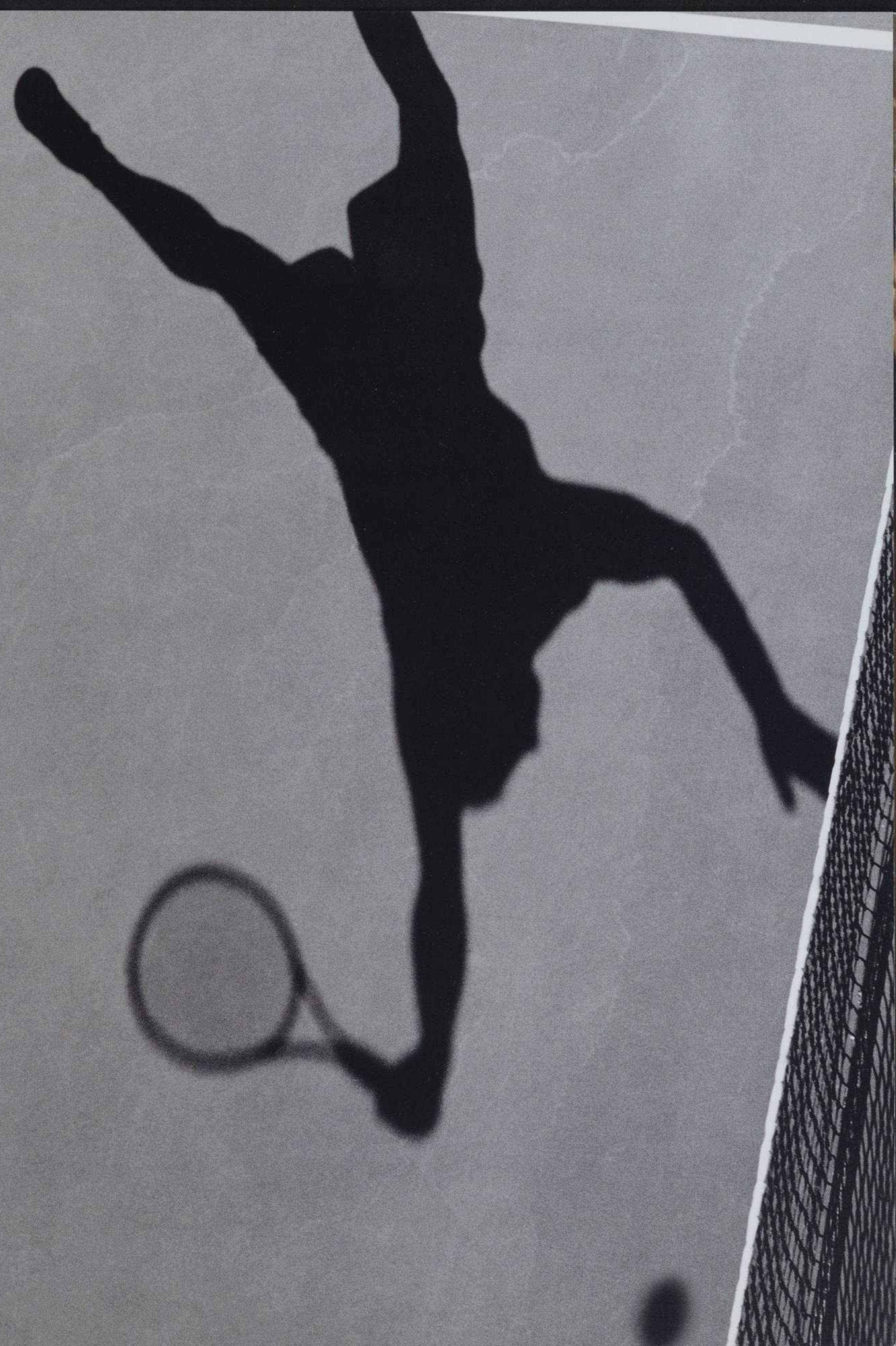
inseparable from

performance. Of style

inseparable from

function. Lincoln LS.

American Luxury.



Paint



Autumn Red Clearcoat Metallic



Deep Wedgewood Blue Clearcoat Metallic



Dark Green Satin Clearcoat Metallic



Graphite Blue Clearcoat Metallic



Silver Frost Clearcoat Metallic



Midnight Grey Clearcoat Metallic



Estate Green Clearcoat Metallic



Light Parchment Gold Clearcoat Metallic



Black Clearcoat



Vibrant White Clearcoat



Ivory Parchment Clearcoat*



White Pearlescent Clearcoat Metallic*

Upholstery



Light Graphite



Medium Parchment

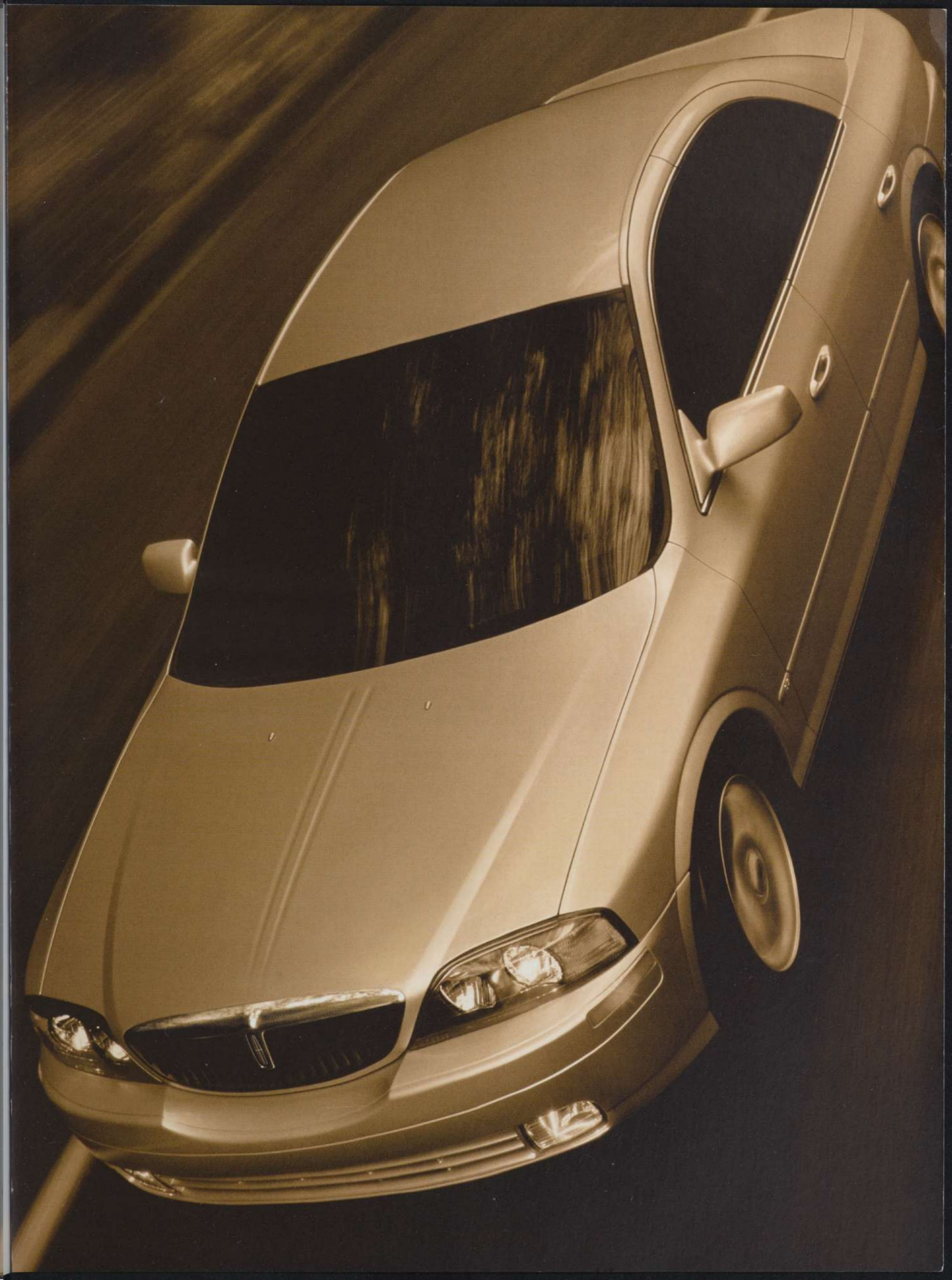


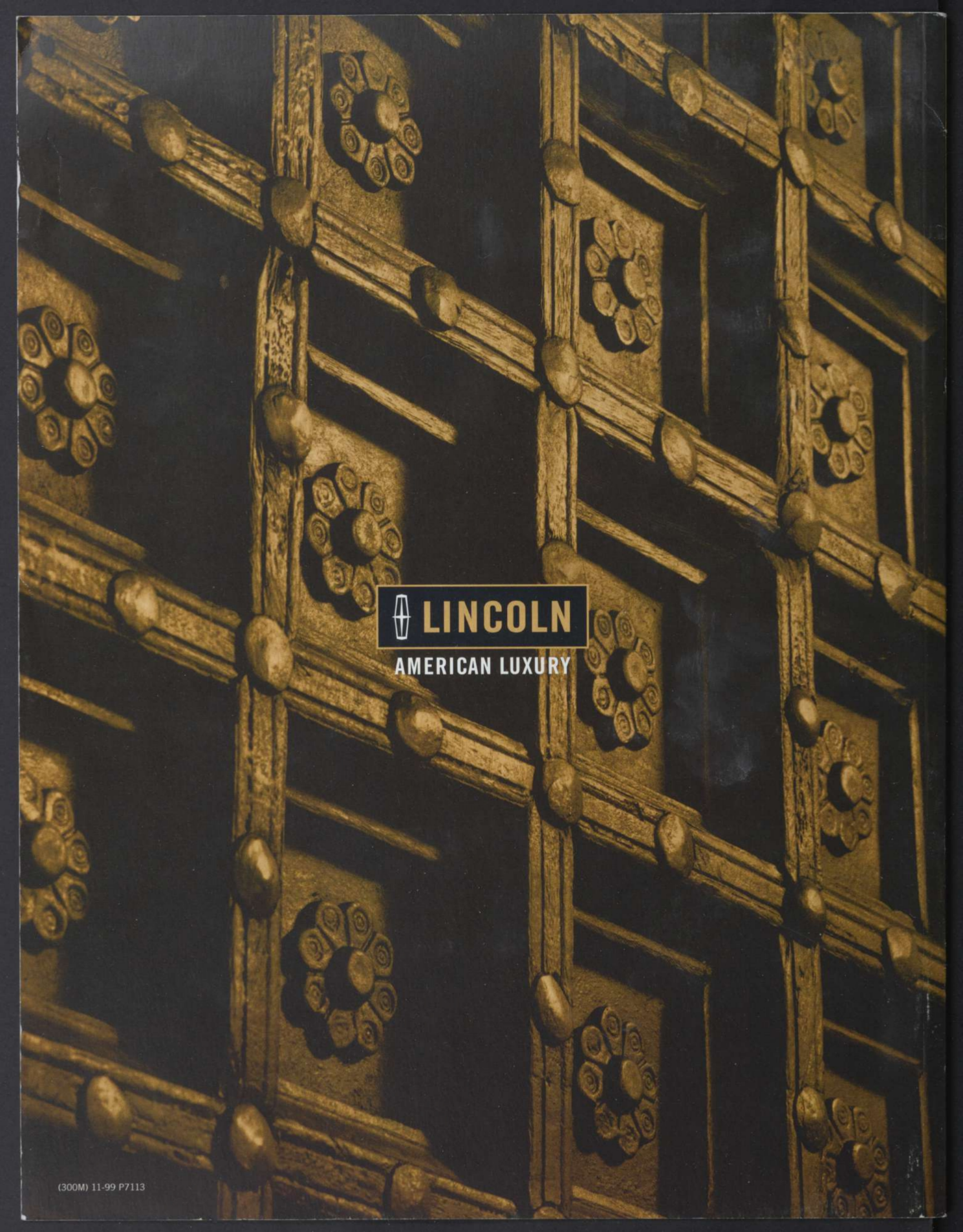
Truffle



Deep Charcoal

*Extra cost tri-coat paint.





 **LINCOLN**
AMERICAN LUXURY