

1982 DODGE **Omni**



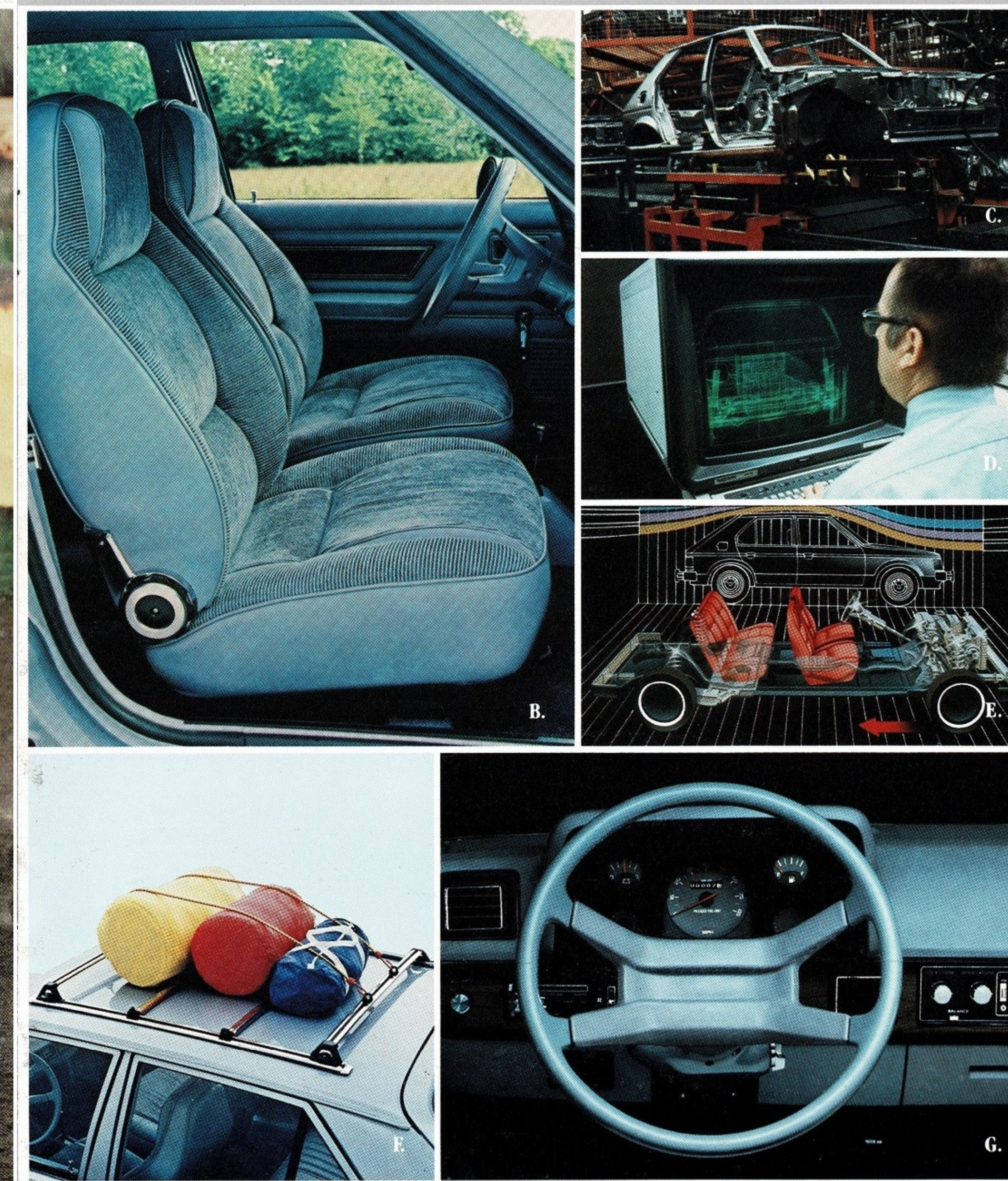
1982 OMNI...AMERICA'S DRIVING MACHINE.



A.

Some of the equipment shown or described throughout this catalog is available at extra cost.

AT CHRYSLER, QUALITY IS A SCIENCE.



B.

C.

D.

E.

F.

G.

When you talk about Omni, you're talking about one of America's...and Chrysler's... biggest success stories. Over 1,000,000 Chrysler Corporation front-wheel drive cars have been produced since Omni was introduced in 1978. Back then, it was the first fuel-efficient front-wheel drive car built in America. Today, it's a proven, value-packed product with good resale value... more going for it in '82 than ever before... including a special Miser model rated at ³⁵ EPA EST MPG, 52 estimated highway* (see page 4 of this catalog for details).

It's an unbeatable combination. Omni Custom and front-wheel drive... for excellent traction and directional stability. And smoother riding comfort, thanks to a refined front suspension featuring a new linkless-type sway bar.

Front-wheel drive for weight efficiency. Because the rear drive shaft and other heavy drive-train components are eliminated, Omni weighs less and delivers more performance than you might expect from a truly thrifty four-cylinder engine.

Front-wheel drive for space efficiency. With major driving components placed up front, interior roominess is increased. Five full-sized passengers fit into an Omni Custom with ease. And there's still room—10.5 cubic feet of concealed space when the rear seat is upright and the standard security shelf panel is in place—and more than 35 cubic feet of cargo space with the rear seat folded down!

Want to carry even more? Then order the handsome rooftop rack and load 'er up! Carry even skis or bikes with special adapter kits available from your dealer.

Inside, Omni Custom offers new standard cloth-and-vinyl upholstered Sport high-back

bucket seats featuring integral headrests and dual recliners. A four-spoke color-keyed sport steering wheel. A padded instrument panel with woodtone accents. Plus cargo area carpeting and improved sound insulation.

And don't forget these great new options. An illuminated passenger side vanity mirror. And an engine block heater for those cold areas.

All Omnis are built to exacting standards in one of this country's most modern assembly plants. Skilled highly trained workers—aided by computer-controlled automatic welders and a quality control program that's second to none in the industry—see to it that every Omni lives up to its promise as a computer-designed, aerodynamically superior car you'll be proud to own and drive for years to come.

A. Omni Custom shown with optional Two-Tone Paint Package in Daystar Blue Metallic and Navy Blue Metallic.

B. Omni Custom's standard corded cloth-and-vinyl Sport bucket seats. **C.** Modern assembly techniques ensure Omni's quality. **D.** Computers were used to design Omni and its engines. **E.** Refined aerodynamics and front-wheel drive... an unbeatable Omni combination. **F.** Omni's optional roof rack. **G.** Omni Custom's standard steering wheel and instrument panel.

About this catalog. We have tried to make this catalog as complete as possible. And we hope you find it useful. However, since the time of printing, some of the information you'll find here may have been updated. Your dealer has details, and you should ask him for current information before ordering.

*Use the EPA EST MPG numbers for comparison. Your mileage may differ depending upon speed, weather and trip length. Actual highway mileage will probably be lower than highway estimate.

OMNI MISER. AT **35*** EPA EST MPG, 52 ESTIMATED HIGHWAY—OH, HOW IT RUNS... AND RUNS...AND RUNS.

The Omni Miser. The highest mileage, lowest priced Omni model also happens to be one of the highest mileage, lowest priced subcompacts built in America.

Equipped with a specially calibrated 1.7-liter overhead cam four-cylinder engine and a four-speed manual transaxle with 2.69 overall top gear ratio, Omni Miser achieves the impressive mileage ratings you see above.

And, for a surprisingly low price, just look what your money will buy. All Omni Misers come fully equipped with Red, Blue, Cashmere or Black soft all-vinyl interiors... or choose the optional cloth-and-vinyl upholstery. Color-keyed deluxe seat belts, a locking glove box, cigarette lighter, dual horns, a day/night inside mirror, a driver's side remote mirror and an inside hood release are all standard. And that's just for openers. Because you also get glass-belted radial tires on steel road wheels, and your choice of 13 exterior colors.

There are plenty of options available, too, to transform your Omni Miser into a very special car. Everything from personalized sound systems to air conditioning are available at extra cost.

And, like all Omnis, Miser features solid Unibody construction. Galvanized steel is used in many major body panels. This year, the use of pre-coated steel in critical areas has increased. So you get even better corrosion protection than before.

So if all this sounds like a pretty good deal, it's really no small wonder—it's Omni Miser.

*Use the EPA EST MPG number for comparison. Your mileage may differ depending upon speed, weather and trip length. Actual highway mileage will probably be lower than highway estimate.

A. Omni Miser shown in Pearl White. B. Miser's standard all-vinyl bucket seat interior in Red. C. Miser's roomy cargo compartment.



OMNI E-TYPE. THE EXCEPTIONAL MOVER.

Designed for a special breed, the E-Type is reserved for enthusiasts seeking a sporty hatchback offering Omni dependability and Omni efficiency at an Omni price.

The E-Type is assuredly racy in appearance. With blacked-out accent trim. Black left and right remote control mirrors. Front and rear bumper rub strips. Unique body-side and mirror stripes. And optional 13-inch Rallye wheels.

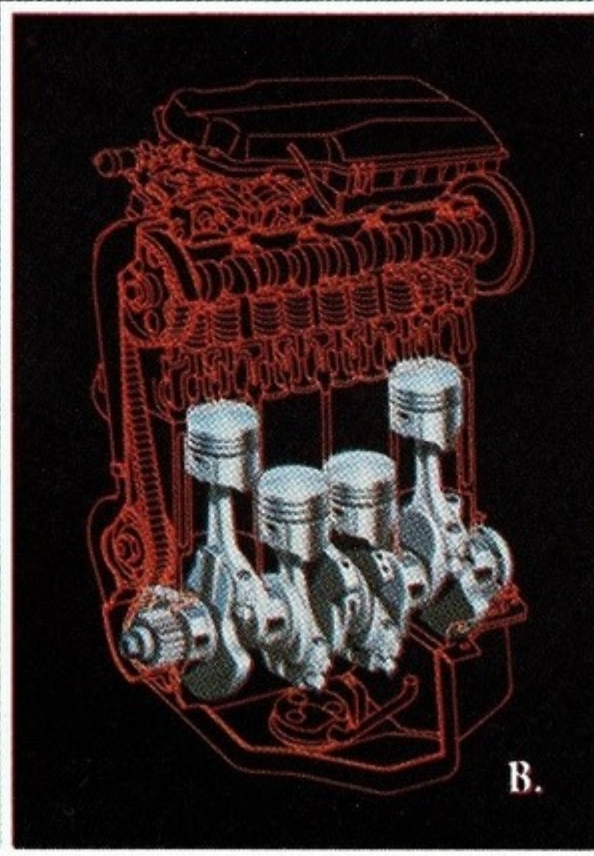
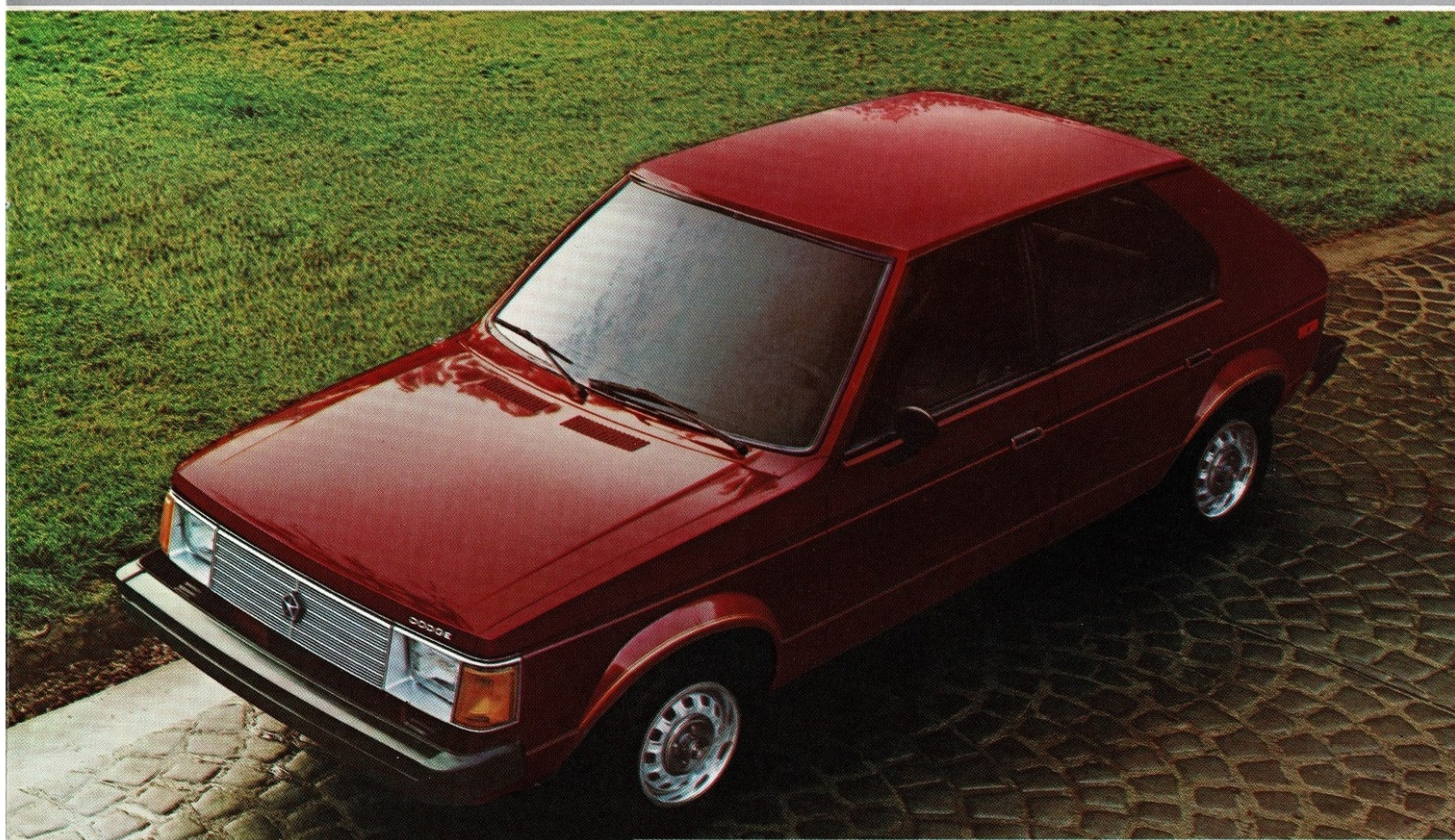
Fortunately, beauty is more than skin deep. Omni E-Type puts you in command in richly appointed cloth-and-vinyl upholstered high-back Sport bucket seats with dual seatback recliners (shown below in Black). Standard. There's a Rallye instrument cluster including a tachometer, clock and trip odometer. Standard. A shift lever console. Standard.

As with all Omnis, there is also an array of super options... to dress your E-Type in style. Including tinted glass. An electric rear window defroster. Automatic speed control. A Light Group which includes halogen headlamps. Power steering. And power brakes.

As good as it looks... as great as it feels... the Omni E-Type is dynamite on the road, especially with the 2.2-liter engine (optional 49 states, standard California) and 3.13 overall top gear ratio four-speed manual transaxle for increased performance. E-Type moves out briskly, even with its standard 1.7-liter engine providing the power.

Feel free to drive with confidence. You own the road in an Omni E-Type.

A. Omni E-Type shown in Morocco Red. B. E-Type's 2.2-liter overhead cam engine. C. E-Type's standard corded cloth-and-vinyl Sport bucket seats feature dual recliners.



OMNI OPTIONS

Pictured here are just a few of the many options available at extra cost on the 1982 Dodge Omni. One or more of them can only add to your driving pleasure and could mean extra value for you at resale time.

A. REAR WINDOW WIPER/WASHER AND/OR ELECTRIC DEFROSTER

Let it storm! Nothing will interfere with your rear view now! Together, these two options help remove mist and dirt as well as rain, snow, ice ... all the elements.

B. ROOF RACK

The option to TOP all options, this handy, sturdy multipurpose accessory increases your loading capacity. Accessory adaptors, available from your dealer, enable you to haul everything from skis to bicycles.

C. AUTOMATIC SPEED CONTROL/INTERMITTENT WIPERS

A perfect traveling or commuting companion, the automatic speed control will also help you save on gas. The deluxe windshield wiper system features an intermittent function for light rain and mist and is a required option with speed control. Controls for both of these options are conveniently located on the column-mounted multifunction control switch.

D. AIR CONDITIONING

In the heat of the day or night, you'll keep quietly cool with the flick of a switch and the push of a button. (Miser model requires 2.2-liter engine and automatic transmission options.)

E. AM/FM STEREO RADIO/CASSETTE TAPE PLAYER WITH DOLBY*

Whatever your listening pleasure, beautiful music happens when you, Omni and this sound system get together. The Dolby* noise reduction feature minimizes hiss on Dolby-encoded cassette cartridges and FM broadcasts.

*Dolby is a trademark of Dolby Laboratories.

F. ILLUMINATED VANITY MIRROR

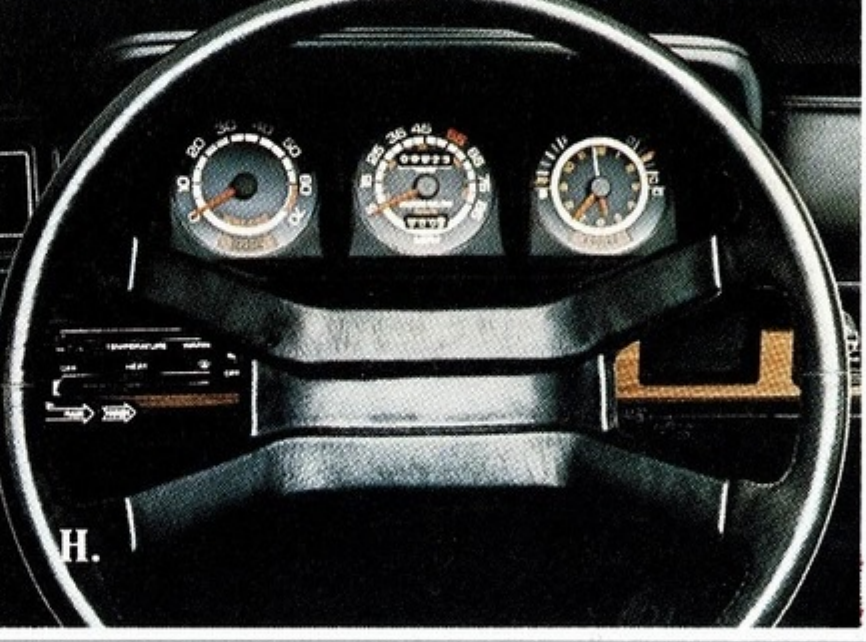
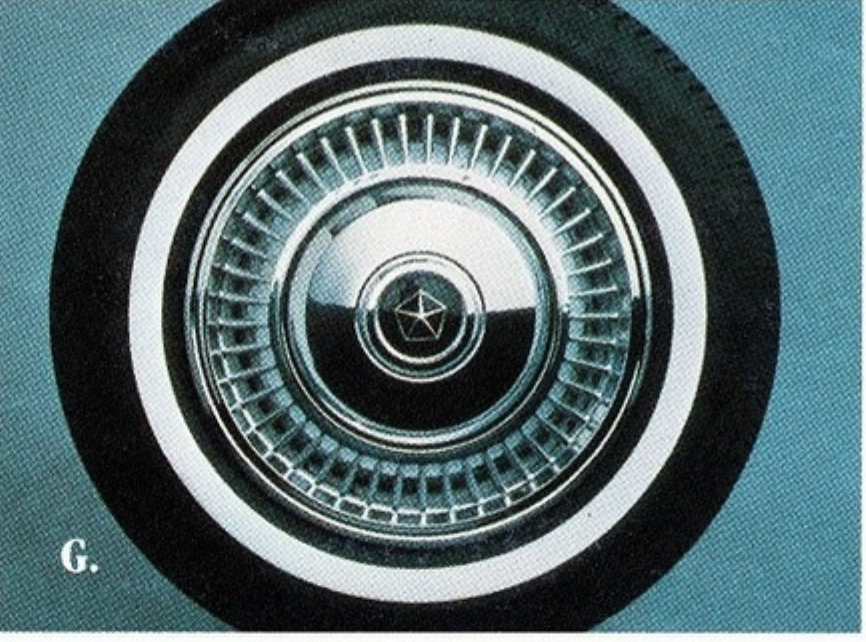
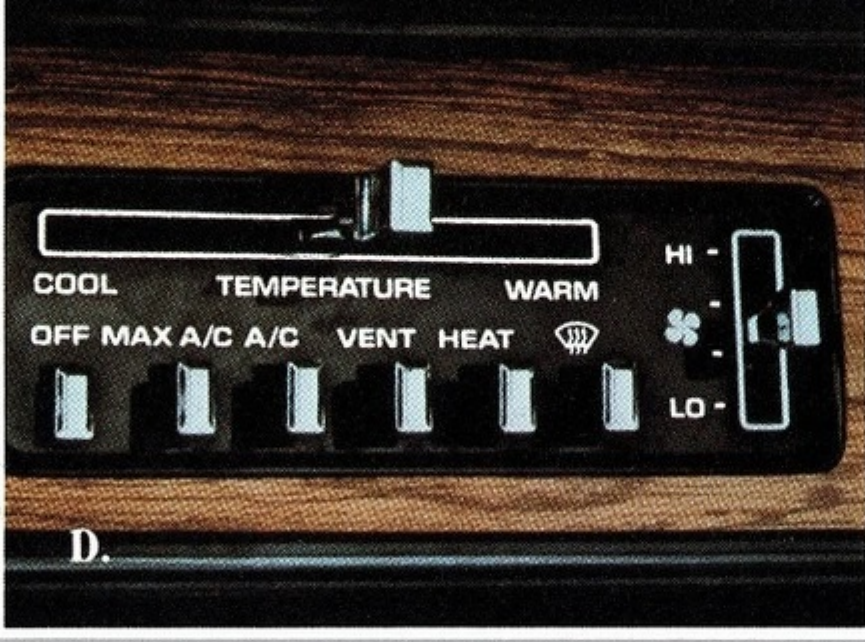
Let's face it: your front seat passenger will appreciate the convenience of freshening up anytime with this lighted mirror.

G. NEW RADIANT WHEEL COVERS

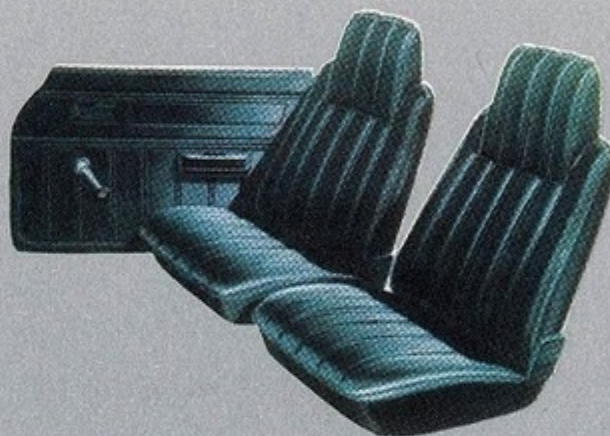
Add a touch of refinement with these new wheel covers that have a black and silver Pentastar center emblem (not available on Miser model).

H. RALLYE INSTRUMENT CLUSTER

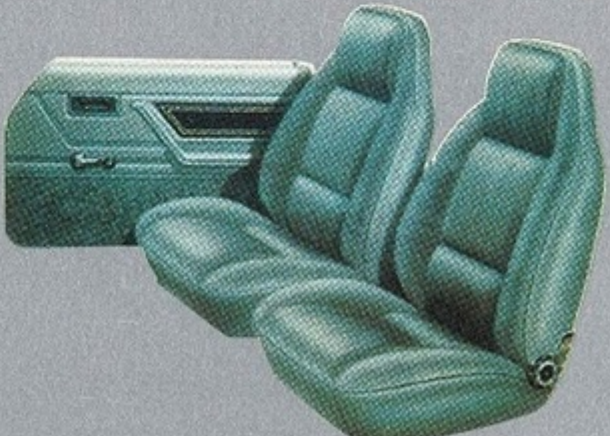
Easy to read and great looking, this instrument cluster adds real class to your Omni. It includes a tachometer, quartz clock with sweep second hand, and trip odometer in addition to Omni's standard speedometer, alternator and fuel gauges, and oil pressure and engine temperature warning light. (Standard on Omni E-Type, optional on Omni Custom, not available on Miser model.)



INTERIOR TRIM



- Standard on Omni Miser—All-vinyl high-back bucket seats with integral headrests. Fold-down rear seat. Offered in Red, Cashmere, Blue, Black.



- Standard on Omni Custom and E-Type—Cloth-and-vinyl Sport-type high-back bucket seats with integral headrests and dual seatback recliners. Fold-down rear seat. Offered in Red, Cashmere, Blue, Silver, Black.



- Optional on Omni Miser—Cloth-and-vinyl high-back bucket seats with integral headrests. Fold-down rear seat. Offered in Red, Cashmere, Blue.



- Optional on Omni Custom and E-Type—All-vinyl low-back bucket seats with adjustable headrests and dual seatback recliners. Fold-down rear seat. Offered in Red, Cashmere, Blue, Silver, Black.

STANDARD FEATURES

	Omni Miser	Omni Custom	Omni E-Type
Alternator—60-ampere	S	S	S
Ashtray—Instrument panel	S	S	S
Battery—310-ampere	S	S	S
Brakes—Manual: disc front, drum rear	S	S	S
Bumper Protective Rub Strips—Front and rear	NA	E	S
Bumpers—Front and rear: bright	S	S	S*
Carpet—Cargo compartment (includes sound insulation)	NA	S	S
Carpet—Cargo compartment mat	S	NA	NA
Carpet—Passenger compartments: color-keyed	S	S	S
Cigarette Lighter	S	S	S
Cleaner Air System	S	S	S
Clock—And trip odometer	E	E	S
Cluster—Rallye instrument: includes tachometer, clock and trip odometer	NA	E	S
Console—Shift lever	NA	E	S
Directional Signals—With lane-change feature	S	S	S
Door Handle Inserts—Exterior: black	NA	NA	S
Flashers—Hazard warning	S	S	S
Fuel Control System—Electronic	S	S	S
Headliner—Cloth-covered	S	S	S
Heater and Defroster	S	S	S
Hood Release—Inside	S	S	S
Hood Silencer Pad	S	S	S
Horns—Dual	S	S	S
Ignition and Voltage Regulator—Electronic	S	S	S
Instrument Panel—Padding	S	S	S
Instrument Panel—Woodgrain applique	NA	S	S
Instrumentation—Alternator gauge, engine temperature/oil pressure warning light, fuel gauge, speedometer (85 mph/140 kph)	S	S	S
Lights—Backup, dome light with front door switches, headlight and wiper switches, parking brake warning, selector lever quadrant (with auto. trans.), side marker lights and reflectors, two rectangular headlamps	S	S	S
Lock—Glove box	S	S	S
Mirror—Exterior, left and right remote: chrome	E	E	S*
Mirror—Exterior, left remote: chrome	S	S	NA
Mirror—Inside: day/night	S	S	S
Moldings—Belt: bright	NA	Et	S*
Moldings—Drip rail: bright	NA	S	S*
Moldings—Upper door frame: bright	NA	S	NA
Moldings—Windshield and rear window: bright	S	S	S*
Radio—AM	E	S	S
Seat Belts—Deluxe: color-keyed	S	S	S
Shelf Panel—Rear security: folding type	NA	S	S
Steering Gear—Rack-and-pinion	S	S	S
Steering Wheel—Sport, four-spoke: color-keyed	NA	S	S
Steering Wheel—Three-spoke: color-keyed	S	NA	NA
Stripes—Wheel opening, lower body side and mirror	NA	NA	S
Suspension—Front: Iso-Strut independent; rear: trailing arm, semi-independent	S	S	S
Tire—Spare: low-mileage	S	S	S
Tires—P175/75R13 glass-belted radial: black sidewall (four)	S	S	S
Transaxle—Four-speed manual, synchronized in all forward gears	S	S	S
Wheel Covers—Deluxe (four)	NA	S	S
Wheels—Road: 13-inch steel; bright lug nuts and center hub, painted argent color (four)	S	NA	NA
Windshield Washers—Electric	S	S	S
Windshield Wipers—Two-speed electric	S	S	S

S—Standard. NA—Not available. E—Extra cost. *Black. †Available only in Bright Exterior Accent Package.

Certain models, packages and options are subject to specific restrictions, requirements and late availability. Consult your dealer for current ordering information.

OPTIONAL PACKAGES

BRIGHT EXTERIOR ACCENT PACKAGE (available on Omni Custom only)
• Bright wheel openings* • Bright belt and sill moldings* • Dual body-side and liftgate tape stripes.

TWO-TONE PAINT PACKAGE (available on Omni Custom only)
• Two-tone paint* • Full-length body-side and liftgate moldings* • Dual accent stripes on body sides and rear • See Colors

LIGHT GROUP
• Map/courtesy light* • Glove box light* • Ash receiver light* • Luggage compartment light* • Halogen headlamps* • Ignition switch light with time delay* • Headlamps-on warning buzzer*
*Available in Package only.

OPTIONS

- Air Conditioning*—Manual (Miser requires 2.2-liter engine and automatic transaxle)
- Battery—430-amp (maintenance-free)
- Bumper Guards—Front and rear (requires bumper protective rub strips, front and rear) ††
- Bumper Protective Rub Strips—Front and/or rear ‡§
- Clock—Analog: with trip odometer§
- Cluster—Rallye instrument (includes tachometer, clock and trip odometer) ‡§
- Console—Shift lever ‡§
- Cooling—Engine: higher capacity (NA with air conditioner)**
- Defroster—Rear window: electrically heated tinted glass
- Emissions—California Control System and Testing (required on vehicles registered in California; NA otherwise)
- Emissions—High-altitude (with 2.2-liter engine only)
- Glass—Clear windshield (used with tinted glass if clear windshield is wanted)
- Glass—Tinted: all windows
- Heater—Engine block
- License Plate Bracket—Front: standard where front plate is required
- Luggage Rack—Roof

MIRRORS
• Inside—Vanity: illuminated right visor
• Outside—Remote right and left §

• Molding—Body-side: black vinyl†

POWER
• Brakes
• Steering—Miser requires 2.2-liter engine and auto. transaxle

RADIOS
• AM Monaural—Miser model only
• AM/FM Stereo—Electronic tuning ††
• AM/FM Stereo—Electronic tuning, with cassette player and Dolby ‡‡ system††
• AM/FM Stereo—Manual tuning
• AM/FM Stereo—Manual tuning, with cassette player and Dolby ‡‡ system
• AM/FM Stereo—Manual tuning, with eight-track tape player
• Radio Upgrade—Dual front speakers (NA with stereo radios)

SEATS
• High-Back Buckets—With integral headrests: cloth-and-vinyl (available Miser only)
• Low-Back Buckets—With adjustable headrests and dual recliners: all vinyl‡

• Speed Control—Automatic (requires deluxe windshield wipers)
• Stripes—Dual body-side and rear ††

TIRES
• P175/75R13—Glass-belted radial wide white sidewall
• P175/75R13—Steel-belted radial black sidewall ‡
• P175/75R13—Steel-belted radial wide white sidewall ‡
• Spare—Conventional (Miser requires 2.2-liter engine and auto. transaxle)

• Transaxle—Automatic (requires 2.2-liter engine option)
• Undercoating
• Vinyl Protection—Vinyl coating on lower body
• Wheel Covers—13-inch Radiant†
• Wheels—13-inch Rallye with trim rings (four) ‡

• Windshield Wipers—Deluxe with intermittent wipe feature
• Wiper/Washer—Rear window
*Vehicles without factory air conditioning have special recommended cooling equipment for later air conditioning installation. See your dealer for details.
†Not available on Miser model.
‡Standard on E-Type.
**Recommended to provide adequate engine cooling performance on vehicles to be equipped with a field-installed air conditioner. Also recommended for use in high temperature areas and for light-duty trailer towing.
††Late availability.
‡‡Dolby is a trademark of Dolby Laboratories.

5/50 PROTECTION PLANS.

Chrysler offers you two choices of 5/50 Protection Plans: the 5/50 Power Train Plan and the 5/50 Custom Plan. These optional service contracts provide you with protection against tomorrow's rising service and parts costs for specified major repairs starting after your vehicle's "basic" limited warranty expires and lasting for five years or 50,000 miles (whichever occurs first) from your vehicle's original in-service date. The plans have a \$25 deductible, and provide an allowance for alternate transportation and towing. Ask your dealer for complete details.

STANDARD SAFETY FEATURES

• Safety-Rim wheels • Combination lap-shoulder belts for the driver and right front passenger, and lap belts for all other passengers • Seat belt reminder system • Energy-absorbing steering wheel • Dual braking system with separate brake fluid reservoirs in the master cylinder • Brake fluid pressure loss warning light (also serves as indicator when parking brake is applied) • Hazard warning flasher system • Turn signals with lane-change features • Electronic ignition • Backup lights • Energy-absorbing sun visors • Front seat head restraints • Energy-absorbing front seatbacks • Inside and outside rearview mirrors • Side marker lights and reflectors • Seatback latches on folding seats • Fade-resistant front disc brakes • Electric windshield washers and wipers • Ignition and steering column lock • Anti-theft trunk lock • Headlamp and wiper circuit breakers with automatic reset • Key-left-in-ignition warning • Non-override door locks (except driver's door) • Resilient window crank knobs • Side door beams • Dual throttle return springs • Interlocking door latches • Recessed inside door release handles • Rotary glove box latch • Reinforced windshield header and roof • Glare-reduction measures for windshield wipers, instrument panel and steering wheel • Double ball-joint rearview mirror mount

DODGE FOR 1982

COLT. Front-wheel drive economy and fun. The five-passenger hatch-back import with the accent on value.



CHALLENGER. Sporty coupe styling, handling and performance in a surprisingly efficient import.



024. Miser for efficiency. Custom for class. Charger 2.2 for get up and go. There's a little of each in every 024 front-wheel drive hatchback.



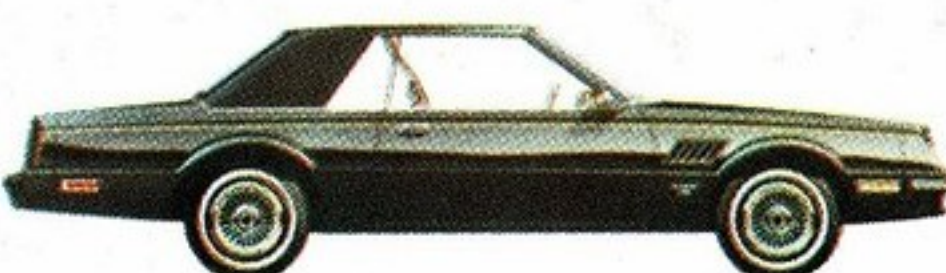
ARIES. Four doors or two? Wagon or sedan? The choice is yours with the efficient front-wheel drive, six-passenger family cars for the eighties.



DODGE 400. The sporty, personal, front-wheel drive two-door that leads the way in high technology for today and tomorrow.



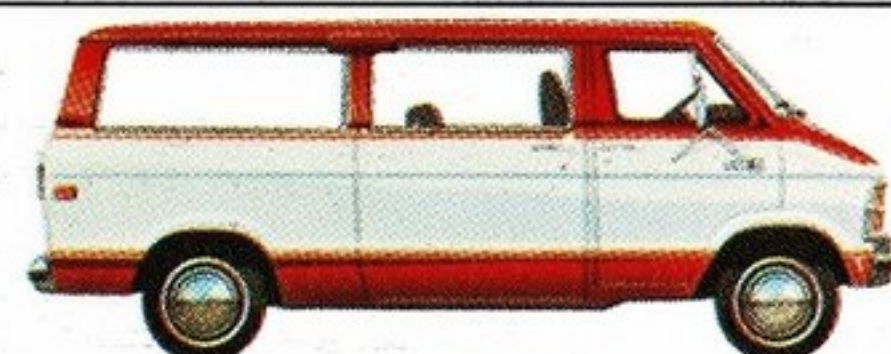
MIRADA. The great American road car is alive and well... and looking better than ever.



DIPLOMAT. Your passport to luxury in a six-passenger four-door with room, ride and comfort to spare.



DODGE WAGON. Get a load in this one! Seats from six to fifteen passengers depending on the model you choose.



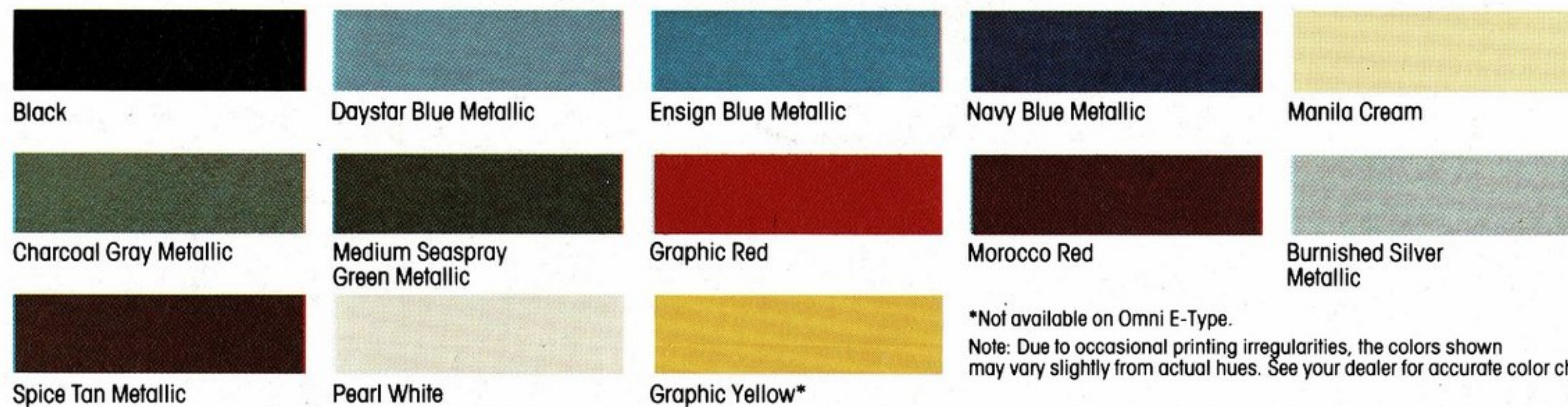
RAMCHARGER. The sport utility vehicle with style to spare. Two- and four-wheel drive models to choose from.



RAM 50. The little import pickup that's sporty on the inside, good-looking on the outside, and Ram Tough underneath.



EXTERIOR COLORS



Two-Tone Colors (available on Omni Custom only)



Corrosion Protection

Chrysler Corporation's corrosion protection is among the best in the industry. It includes the extensive use of galvanized sheet metal panels, one of the best known methods of corrosion protection, and pre-coated steel in critical areas, as well as the seven-step dip-and-spray process.

DIMENSIONS, WEIGHT AND CAPACITY

	Omni Miser	Omni Custom	Omni E-Type
Length, Overall:	162.6"	162.6"	163.2"
Width, Overall:		65.8"	
Height, Overall:		53.1"	
Wheelbase:		99.1"	
Turning Diameter:		34.3' left, 35.9' right	
Curb Weight (estimated):	2,118 lbs	2,172 lbs	2,234 lbs*
Track:		56.1" front, 55.6" rear	
Cargo Capacity:		10.5 cu ft (shelf panel height)	
—with rear seatback raised		35.8 cu-ft	
—with rear seatback down			
Passenger Capacity:		5	
Fuel Capacity:		13 gallons (49 liters)	

*With optional 2.2-liter engine.

ENGINE AND TRANSAXLE

	Omni Miser	Omni Custom	Omni E-Type
1.7-liter (104.7 CID)			
4-speed manual — 2.69:1 OTGR	Standard	NA	NA
4-speed manual — 3.37:1 OTGR	NA	Standard 49 states	Standard 49 states
2.2-liter (135 CID)*			
4-speed manual — 2.69:1 OTGR	NA	Standard California	NA
4-speed manual — 3.13:1 OTGR	NA	NA	Optional 49 states, Standard Calif.
3-speed automatic — 2.78:1 OTGR	Optional	Optional	Optional

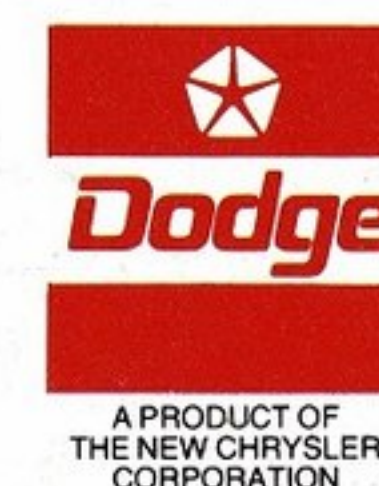
*Available with High-Altitude Emissions. Note: Emissions Control and Testing required in California.

NA—Not available.

All product illustrations and specifications are based on authorized information. Although descriptions are believed correct at publication approval, accuracy cannot be guaranteed. Some of the equipment shown on product illustrations is optional, at extra cost. Chrysler Corporation reserves the right to make changes from time to time, without notice or obligation, in prices, specifications, colors and materials, and to change or discontinue models. See your dealer for the latest information.

Buy or Lease a Dodge Omni

If you buy a new car every two years or so, or would like to, you're in an ideal situation to take advantage of leasing—for that's the typical length of a lease contract. If you use your car in business, leasing could cut down on your operating and administrative expenses as well as give you accurate records for tax purposes. The more you learn about leasing, the more likely you are to consider it seriously. Talk it over with us—your local member of the Chrysler Leasing System.



MOPAR parts are engineered by Chrysler Corporation for use in your new Dodge Omni. When replacement is necessary, be sure to specify MOPAR parts. Used by professional mechanics all over the world.