

GMC

TRUCK

C/K PICKUPS



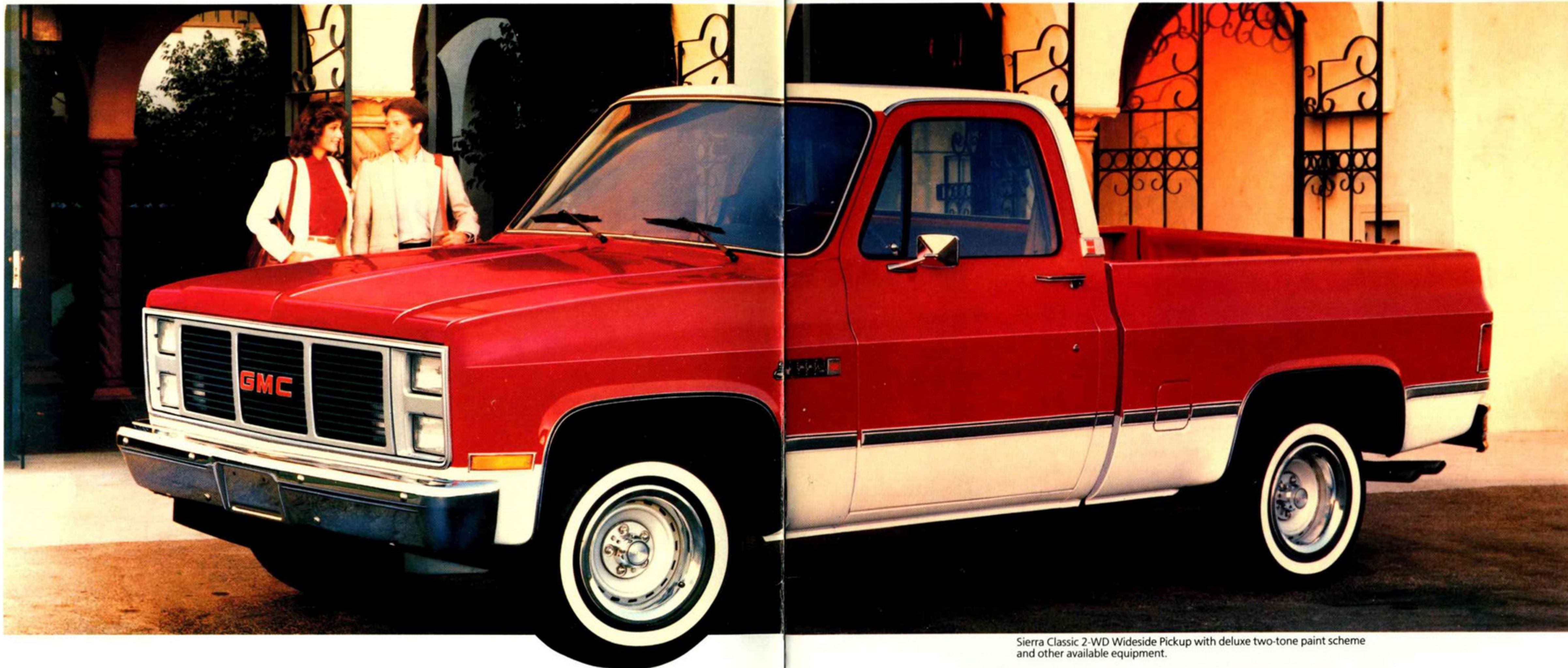
GMC TRUCK & COACH

MORGAN BROS OF EVERETT, INC.

3225 Cedar

Everett, WA 98201

252-3163



Sierra Classic 2-WD Wideside Pickup with deluxe two-tone paint scheme and other available equipment.

GMC Pickups are designed and assembled by an organization of people who take pride in building the kind of trucks you can drive with confidence and pleasure.

The 1986 line of full-size Pickups continues the GMC tradition of quality craftsmanship that assures full value for your investment. You'll find new solid colors and two-tone color combinations to give '86 Pickups a fresh, updated appearance. Nearly all gasoline engines for '86 feature improvements (see page 13 for details).

When you shop GMC's extensive line of full-size Pickups, you have ample opportunity to select the right-size truck with the appearance, power, and performance you're seeking. Look over the sampling of gasoline and diesel models in this brochure and ask your GMC Dealer for a demonstration drive of the GMC Pickup that fills your want list.

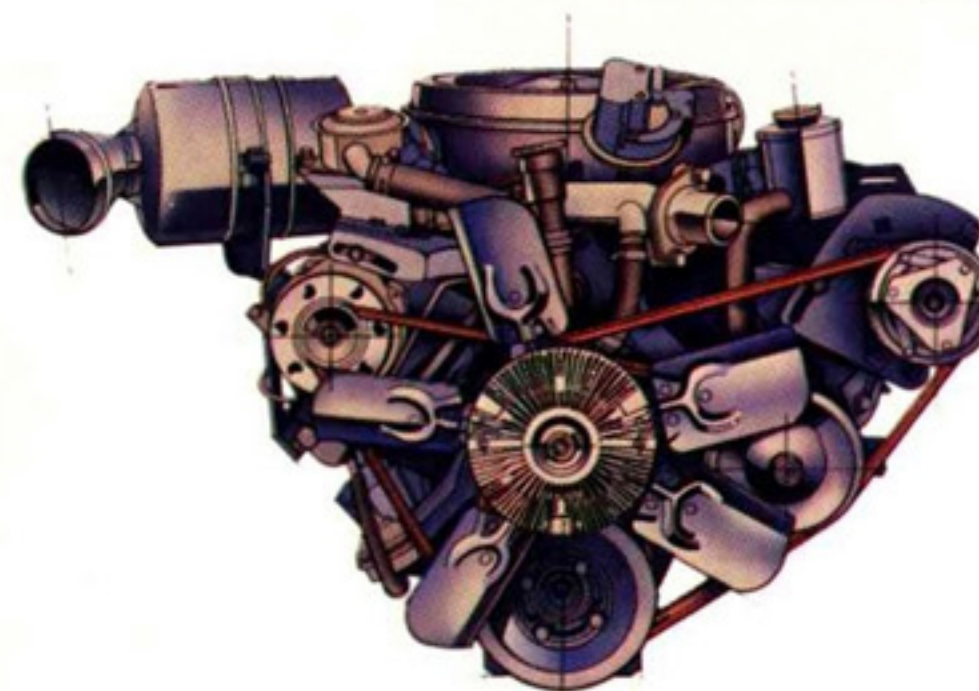
COMMITMENT PLUS

Commitment Plus is the most complete joint sales and service customer satisfaction program available on light-duty trucks today. It offers the following benefits:

- A thorough new-vehicle inspection
- one full tank of fuel
- complimentary 1000-mile inspection
- complimentary 3000-mile maintenance service including oil change and filter at no extra charge

GMC Truck and GMC Dealerships are truly committed to making GMC Light Duty Trucks easy to live with. Our customers' total satisfaction is indeed our goal!

Applies to retail sales only, but not to Cab & Chassis models nor any Series 3500 Pickup model described in this catalog.



A big truck tough 6.2 Liter V8 truck diesel provides an excellent balance of power and performance for all GMC diesel engine models.

GMC PICKUP AND CAB & CHASSIS MODEL AVAILABILITY

| ALL MODELS AVAILABLE WITH GASOLINE OR DIESEL POWER | PICKUPS | | | | | CAB & CHASSIS | | | |
|--|---------------------------|-------|-----------------------------|-------|--------------------------|------------------|-------|-----------------|-------|
| | WIDESIDE CONVENTIONAL CAB | | FENDERSIDE CONVENTIONAL CAB | | WIDESIDE BONUS/ CREW CAB | CONVENTIONAL CAB | | BONUS/ CREW CAB | |
| WHEELBASE, IN | 117.5 | 131.5 | 117.5 | 131.5 | 164.5 | 131.5 | 135.5 | 159.5 | 164.5 |
| BOX LENGTH, FT | 6-1/2 | 8 | 6-1/2 | 8 | 8 | — | — | — | — |
| C-1500 (2-WD) | X | X | X | | | | | | |
| C-2500 (2-WD) | | X | | X | X | X | | | |
| C-2500/C6P (2-WD) | | X | | X | | | | | |
| C-3500 (2-WD) | | X* | | X | X* | X | X* | X* | X* |
| C-3500/C7C (2-WD) | | | | | | | X+ | X+ | X+ |
| K-1500 (4-WD) | X | X | X | | | | | | |
| K-2500 (4-WD) | | X | | X | | | | | |
| K-2500/C6P (4-WD) | | X | | X | | | | | |
| K-3500 (4-WD) | | X* | | | X* | X | X* | X+ | X* |
| K-3500/C7E (4-WD) | | | | | | | X+ | X+ | X+ |

C6P=HD Chassis C7C=10,500-lb GVWR C7E=11,000-lb GVWR *Available with dual rear wheels +Dual rear wheels standard

GMC SIERRA CLASSIC TRUCK

Just what you deserve — the very best! Classic Beauty

There's more to pleasurable trucking than a smooth ride — and it's lavishly abundant in a GMC Sierra Classic Pickup. Body-pampering foam-cushioned bench seats are upholstered in custom pigskin-grained vinyl or textured velour cloth in Charcoal, Blue, Mahogany, Saddle Tan, or Burgundy, depending upon model.

Underfoot there's plush wall-to-wall deep-pile carpeting, overhead a cloth-covered insulated headliner. Vinyl door trim includes insert panels of elegant brushed pewter-tone, color-keyed cloth, and carpet.

Ultra Comfort and Convenience

Thoughtful touches added for your convenience include a vanity mirror on the right sunshade and a closing-assist strap and handy storage pocket on both front doors. Of course, Sierra Classic also has a dome lamp, cigarette lighter, lighted ashtray, and door switches for interior lights.

Extra-thick insulation is added to the floor. Cab back panel, cowl, hood, and body-to-fender areas also are insulated to help maintain cab climate and sound at agreeable levels — more ways Sierra Classic caters to your comfort. (See pages 10 through back cover for more details about GMC Pickups including Sierra Classic.)



Fun with a flare! — 4-WD Sierra Classic Wideside Pickup.



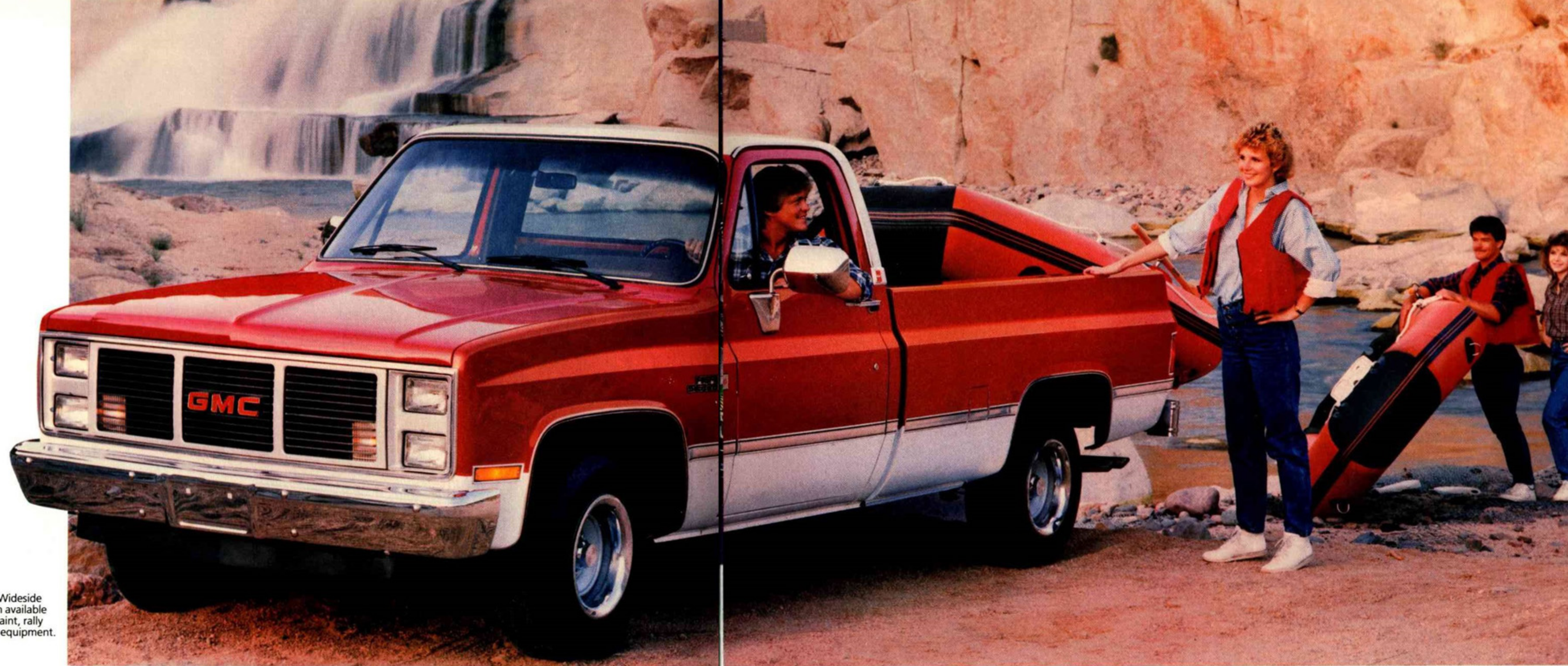
Sierra Classic instrument cluster has brushed pewter-tone trim and full gage instrumentation.



Sierra Classic interior with custom cloth bench seat



Sierra Classic 2-WD Wideside Pickup with rally wheels and other available equipment. Tires are supplied by various manufacturers.



2-WD High Sierra Wideside Pickup shown with available deluxe two-tone paint, rally wheels, and other equipment.



High Sierra interior with custom vinyl seat trim



4-WD High Sierra Wideside Pickup



High Sierra instrument cluster

GMC HIGH SIERRA TRUCK

Step Up To High Style With An Extra Dash of Posh

If you want even more posh than our beautiful standard interior, step up to High Sierra. At this level you'll find a full-length insulated headliner on Bonus/Crew Cab models; bright-trimmed black inserts on Regular Cab door trim panels; and bright trim on the instrument cluster. Floor covering is color-keyed rubber (black rubber for Bonus Cab rear floor).

Sit In The Lap of Luxury

In the 2-Door Cab High Sierra the full foam-bench seat is covered with your choice of durable fabrics; dual-tone woven cloth and vinyl or all-vinyl pigskin-grained trim. Colors are Charcoal, Blue, Mahogany, Saddle, or Burgundy.

Enjoy More Convenience, More Quiet

Front-door switches operate dome and map lights. There's an illuminated ashtray and a cigar lighter that will accept a small electrical appliance plug. Cowl panel and cab back panel receive sound-deadening insulation. (Find more details about GMC Pickups, including High Sierra, on pages 10 through back cover.)



4-WD Sierra 1500 Wideside Pickup

GMC SIERRA TRUCK

Standard Means Crafted Quality

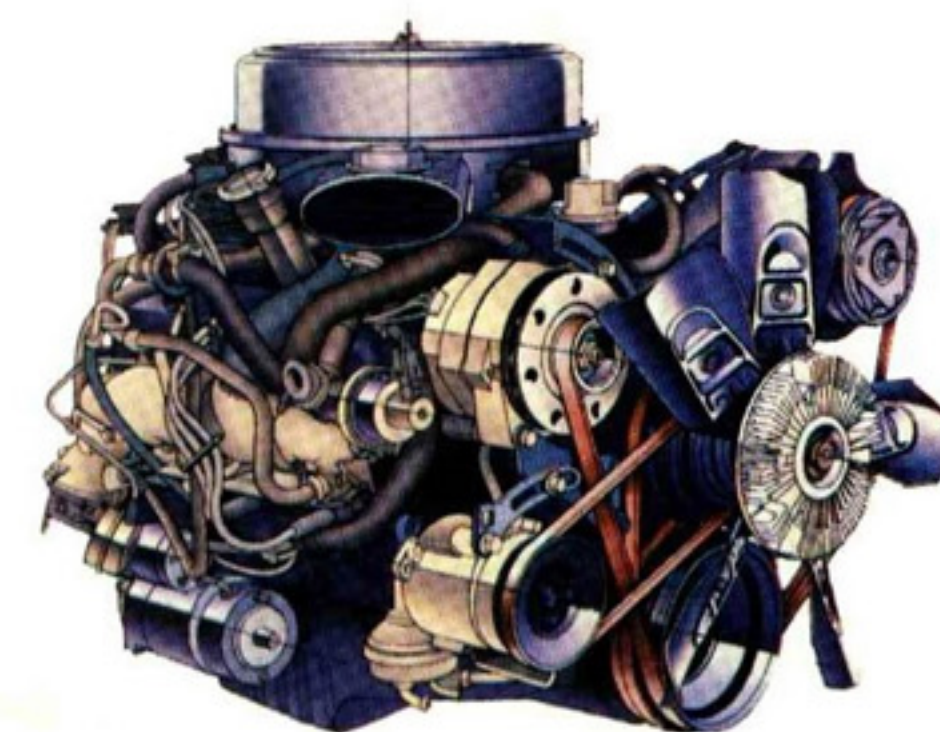
The transmission shift lever is mounted on the steering column on C-1500 Pickups with standard 3-speed manual or available automatic transmission, clearing ample stretch-out space for the center passenger's legs.

Controls for heater plus available air conditioning and radio are positioned for convenience.

Beauty and Brawn

GMC Sierra Pickups prove that tough can be beautiful. The aerodynamically styled cab is covered with high-gloss paint in your choice of ten brilliant solid colors, three of them brand new for '86 (see back cover). Sierra sparkles with bright trim starting at the chromed front bumper and bright front end moldings and continuing on to bright dual mirrors, bright hubcaps (except dual rear wheel models), and bright roof drip moldings. Best of all, there's no extra charge for this deluxe trim — it's standard!

(See pages 18, 19 for a detailed description of standard and available equipment. See pages 13 and 14 for special paint schemes and available dress-up items and trim packages to customize your GMC Pickup.)



5.0 Liter V8
gasoline engine



2-WD Sierra Fenderside Pickup.



Sierra interior with deluxe cloth seat trim.



Sierra instrument cluster. Instruments are easy to read and controls are positioned for driver convenience.

Comfort That Lasts

Sierra's full-width, 3-passenger bench seats are special. They're ergonomically contoured and cushioned with deep foam that won't "bottom out"; backs of Regular Cab seat and Crew Cab rear seat fold forward for access to generous behind-seat storage. Standard upholstery is durable grained vinyl in a choice of five colors (three colors for Bonus/Crew cab).

Sierra provides color-coordinated amenities not usually found in standard models: dual padded armrests; embossed plastic door trim panels; dual padded sunshades; and vinyl-over-foam instrument panel pad. Floor covering is embossed black rubber. Full-length sill plates offer door-opening protection and floor covering retention.

Strategically placed insulation teamed with deluxe heater/defogger and power flow-through ventilation help create a pleasant interior climate; outside-air-type air conditioning is available for year-round comfort.

GMC 4-WD PICKUPS

TRUCK

Head For The Heights

Ready for the Rough

When you leave the road behind, it's a great feeling to realize that the 4-WD Pickup you're depending on to get you back has the tough construction and dependable performance resulting from 83 years of GMC know-how. All GMC 4-WD models are built on a rugged carbon steel frame. Standard handling features include: power steering; power front disc, rear drum brakes; and a 4-speed manual transmission with floor-mounted shift.

40 Ways To Go 4-Wheeling In A GMC

There are 40 ways to go off-roading in a GMC 4-WD Full-Size Pickup (slightly less in California). Match diesel- or gasoline-engine Wideside, Fenderside, Regular Cab, Bonus Cab, Crew Cab, Cab & Chassis, short boxes, long boxes, 1/2-ton, 3/4-ton, 1-ton, single-or-dual rear wheels, in a big line up of power trains to match your needs. (See pages 2 and 12 for chart of available models.)

Off-Road Handling Package

For added off-road stability there's an available Front Quad Shock package for K-1500/2500 models. It consists of four 25-mm front shock absorbers, two 32-mm heavy-duty rear shocks, and a frame-mounted front-axle pinion nose bumper to help limit front-axle windup.

Trim To Suit Your Fancy

Sierra, High Sierra, and Sierra Classic trim levels let you choose trim and convenience items to suit your personality and driving preference. See pages 4-9 and 16-19 for details of standard and available equipment and trim for 4-WD.



Manual or Automatic Locking Front Hubs

When in the 4-WD mode, we believe you'll appreciate the dependability afforded by our standard, tough manual-locking front hubs ... especially when you intend to use your GMC 4-WD for heavy-duty applications such as snowplowing. And, in such cases, we also recommend equipping your K-1500/2500 vehicle with available heavy-duty front and rear shock absorbers.

If you use your K-1500 GMC for less strenuous activities, you may prefer the convenience of available automatic hublocks which permit no-stop shifting into 4-WD at speeds up to 25 MPH. Ask your GMC Dealer's advice about the best 4-WD system for your needs.

4-WD Sierra Classic Wideside Pickup shown with available equipment. Tires are supplied by various manufacturers.



Attack winter head-on with a GMC 4-WD. Shown with available aftermarket equipment.



BONUS & CREW CAB PICKUPS



2-WD Series C-3500 Sierra Classic Wideside Crew Cab with available dual rear wheels and 10,000-lb GVWR



Sierra Classic Crew Cab interior with custom cloth seat trim

Big-Job 4-Door Pickups

Carry a crew of six and their gear in a big GMC Crew Cab with full-width front and rear bench seats. Instead of a rear bench seat, Bonus Cab has 55.8 cu ft of lockable load space behind the front seat. Rear doors on both sides of Bonus and Crew Cabs simplify passenger entry or cargo loading. All models have an 8'-long Wideside cargo box on a 164.5" wheelbase.

Choice of Trim Levels

Sierra, High Sierra, and Sierra Classic trim levels offer most of the paint schemes and equipment available for 2-door models, including the Special Heavy Hauler trim for dual rear-wheel models. The color-coordinated interior comes in Blue, Burgundy, or Saddle Tan.

Special Chassis Equipment

Camper Special Chassis available equipment package includes a camper wiring harness and heavy-duty equipment depending upon model to permit your Bonus or Crew Cab Pickup to use a slide-on camper body.

Commercial Special Chassis available equipment package includes the same equipment as the Camper package with the exception of the camper wiring harness. Ask your GMC Dealer about details of these two packages.

See pages 13 through back cover for drivetrains, standard and available equipment, and technical data about GMC Bonus and Crew Cab models.

CAB & CHASSIS MODELS



Sierra Cab and Chassis with available dual rear wheels. Dump body and snowplow are available from aftermarket equipment suppliers.



Cab & Chassis with van body



Cab & Chassis with utility body



Cab & Chassis with wrecker equipment



Cab & Chassis with a food service body

Mount Your Custom Bodies Up to 13' Long

Rugged GMC Cab & Chassis gasoline or diesel models can handle a variety of special bodies to make your job easier. Regular Cab and Bonus & Crew Cab, 2-WD or 4-WD are adaptable to a wide range of box and body configurations from 7' to 13' long. See pages 13 through back cover for details. Ask for a Cab & Chassis Models catalog.

Vocational bodies are supplied to GMC Dealers by outside suppliers, independently of GMC, which is not responsible for the safety or design features, materials, or workmanship of any alteration by any such supplier.

MODEL AVAILABILITY

| MODEL | NOMINAL RATING AND TYPE | WHEELBASE (Inches) | OVERALL LENGTH (Inches) | MAXIMUM GVWR (Pounds) | MAXIMUM PAYLOAD (Pounds)† | |
|--------------------|-------------------------|--------------------|-------------------------|-----------------------|---------------------------|--------|
| | | | | | GAS | DIESEL |
| CONVENTIONAL CAB | TC20903 | 3/4 Ton, 2-WD | 131.5 | 206.3 | 8600 | 4762 |
| | TC30903 | | | | 9000 | 4965 |
| | TC30903 | | | | 9200 | 4199 |
| | TC31003 | 1 Ton, 2-WD | 135.5 | 215.8 | 10,000* | 5744 |
| | TC31003/C7C+ | | | | 10,500* | 6142 |
| CREW CAB/BONUS CAB | TC31403 | 1 Ton, 2-WD | 159.5 | 239.8 | 10,000* | 5680 |
| | TC31403/C7C+ | | | | 10,500* | 6078 |
| | TK31003 | 1 Ton, 4-WD | 135.5 | 215.6 | 10,000* | 5258 |
| | TK31003/C7E+ | | | | 11,000* | 6129 |
| | TK31403 | 1 Ton, 4-WD | 159.5 | 239.7 | 10,000* | 5175 |
| | TK31403/C7E+ | | | | 11,000* | 6040 |
| CREW CAB/BONUS CAB | TC30943 | 1 Ton, 2-WD | 164.5 | 239.3 | 10,000* | 5346 |
| | TC30943/C7C+ | | | | 10,500* | 5735 |
| | TC30943 | | | | 10,000* | 4806 |
| | TK30943 | 1 Ton, 4-WD | 164.5 | 239.3 | 10,000* | 4339 |
| | TK30943/C7E+ | | | | 11,000* | 5659 |

†Payload diminishes proportionately with optional equipment and body weight
*GVW with dual rear wheels

+Requires available large-size mirrors

@Crew Cab

GMC TRUCK HIGH-TECH TRUCK POWER

There's an impressive selection of gasoline or diesel powerplants for your GMC Full-Size Pickup. For 1986 GMC Light Duty Truck engines have improvements designed to give better performance than ever before, over a long period of time.

All gasoline engines except the 4.8L in-line six now are equipped with new generator drive belts that have increased drive friction due to their greater area of contact with pulleys. All V6 and V8 gasoline engines except the 7.4L V8 also have new crankshaft seals and oil pan gaskets.

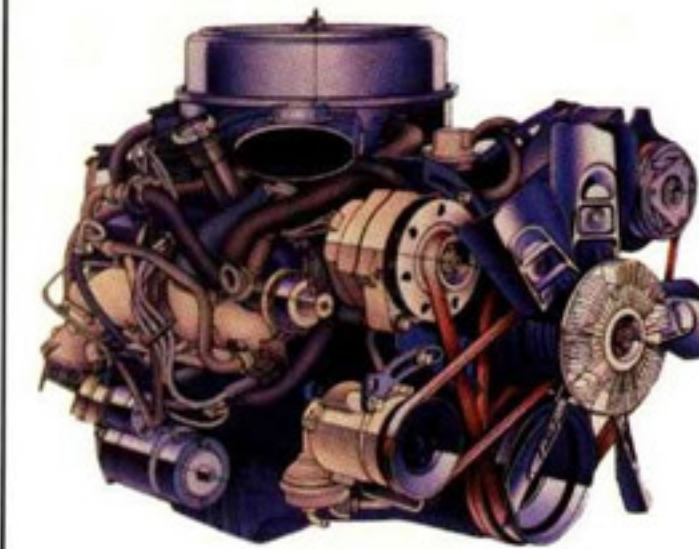


4.3 Liter (262 CID) Vortec V6 Engine

This high-compression, high-performance V6 has an electronic spark control system (ESC) which automatically helps control spark knock. This engine also offers a 4-barrel carburetor, a Vortec swirl port induction system for fuel/air mix, and central spark plug combustion chamber design for more complete burning of fuel. The 4.3 Liter V6 is the standard powerplant for gasoline engine C/K-1500 Pickups plus C-2500 Pickups under 8500-lb GVWR in all states except California.

4.8 Liter (292 CID) In-line Six Engine

The 4.8 L6 is standard on gasoline engine Pickup and Cab & Chassis models over 8500-lb GVWR (except in California) where added load-hauling ability is required. It's the same tough engine available for many GMC Medium Duty Trucks.



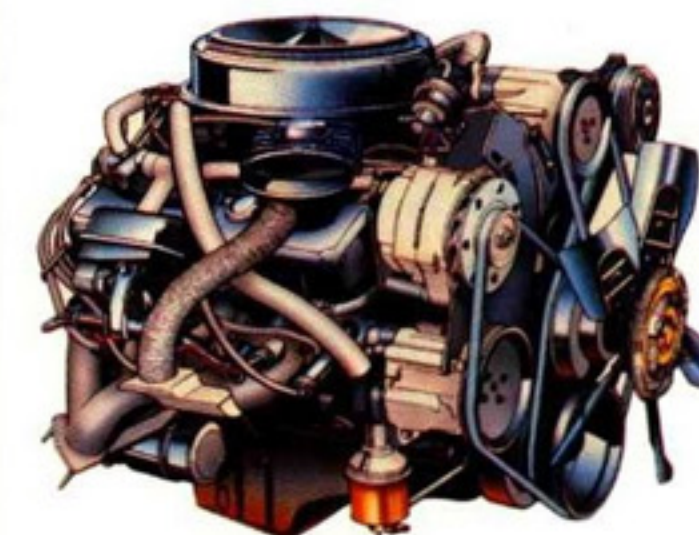
5.0 Liter (305 CID) V8 Engine With Electronic Spark Control (ESC)

Because its horsepower rating is similar to the larger 5.7 Liter V8, the 5.0 Liter V8 with ESC is a popular, economical choice available for gasoline engine GMC Pickups under 8500-lb GVWR (except in California). The ESC system automatically adjusts spark advance to control spark knock. A 5.0L V8 without ESC is available for California gasoline engine C-1500 Pickups.



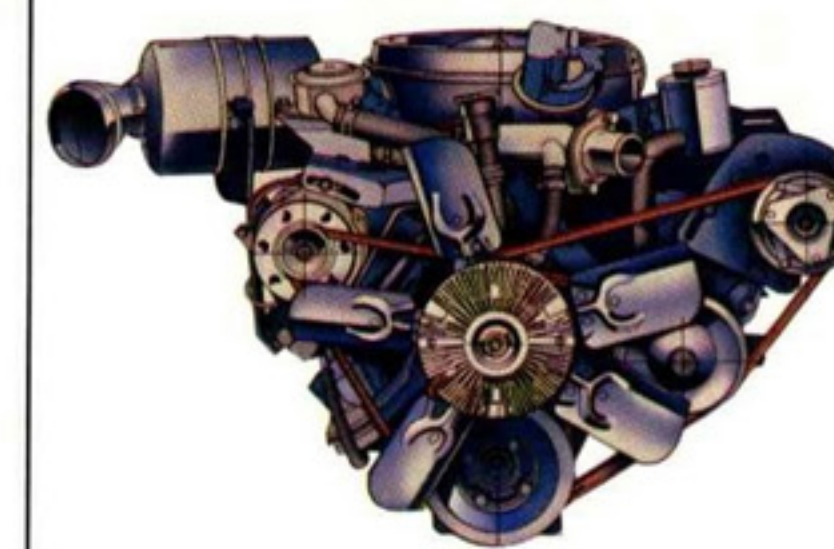
5.7 Liter (350 CID) V8 Engine

For all-around high performance, the 5.7 Liter V8 engine is available for most gasoline engine models in both light- and heavy-duty emission versions. The heavy-duty emission version of the 5.7 Liter V8 incorporates many of the quality features found in larger GM V8 gasoline engines.



7.4 Liter (454 CID) V8 Engine

A large-displacement powerplant with plenty of torque to handle big jobs. It's available for gasoline engine models with a 8500-lb-or-higher GVW rating. With available air conditioning an electric booster fan is included for optimum engine cooling.



6.2 Liter (379.4 CID) Engine

Standard for all diesel engine models, this naturally-aspirated, tough truck diesel combines heavy work capability with diesel engine advantages. A sophisticated fuel filtration system helps protect against water and dirt in the fuel. The system is contained in one integral unit in the engine compartment for ease of service. Water-in-fuel and fuel-filter-change sensors incorporate a sending unit to a warning light on the instrument panel.

A WORD ABOUT ENGINES

GMC Trucks are equipped with engines produced at facilities operated by GM car and truck groups, subsidiaries or affiliated companies worldwide.

ENGINES WITH LIGHT-DUTY CERTIFICATION FOR MODELS UNDER 8,500-LB GVW, 49 STATES

| DISPLACEMENT/TYPE | 4.3 LITER 4-BBL, V6 | 5.0 LITER 4-BBL, V8 WITH ESC | 5.7 LITER 4-BBL, V8 | 6.2 LITER V8 DIESEL |
|------------------------------|---------------------|------------------------------|---------------------|---------------------|
| ENGINE ORDERING CODE | LB1 | LE9* | LS9 | LH6 |
| BORE & STROKE (IN) | 4.00x3.48 | 3.74x3.48 | 4.0x3.48 | 3.98x3.82 |
| COMPRESSION RATIO | 9.3 to 1 | 9.2 to 1 | 8.2 to 1 | 21.3 to 1 |
| SAE NET HORSEPOWER @ RPM | 155@4000 | 160@4400 | 165@3800 | 130@3600 |
| SAE NET TORQUE (LB/FT) @ RPM | 230@2400 | 235@2000 | 275@1600 | 240@2000 |

ESC=Electronic Spark Control
* Produced by GM: Chevrolet-Pontiac-Canada Group

ENGINES WITH LIGHT-DUTY CERTIFICATION FOR MODELS UNDER 8,500-LB GVW FOR CALIFORNIA

| DISPLACEMENT/TYPE | 4.3 LITER 4-BBL, V6 | 5.0 LITER 4-BBL, V8 | 5.7 LITER 4-BBL, V8 |
|------------------------------|---------------------|---------------------|---------------------|
| ENGINE ORDERING CODE | LB1 | LF3 | LS9 |
| BORE & STROKE (IN) | 4.00x3.48 | 3.74x3.48 | 4.0x3.48 |
| COMPRESSION RATIO | 9.3 to 1 | 8.6 to 1 | 8.2 to 1 |
| SAE NET HORSEPOWER @ RPM | 155@4000 | 155@4000 | 165@3800 |
| SAE NET TORQUE (LB/FT) @ RPM | 230@2400 | 245@1600 | 275@1600 |

ENGINES WITH HEAVY-DUTY CERTIFICATION FOR MODELS ABOVE 8,500-LB GVW, 50 STATES

| DISPLACEMENT/TYPE | 4.8 LITER 1-BBL, L6† | 5.7 LITER 4-BBL, V8 | 7.4 LITER 4-BBL, V8 | 6.2 LITER V8 DIESEL |
|------------------------------|----------------------|---------------------|---------------------|---------------------|
| ENGINE ORDERING CODE | L25 | LT9 | LE8 | LL4 |
| BORE & STROKE (IN) | 3.9x4.1 | 4.0x3.48 | 4.25x4.0 | 3.98x3.82 |
| COMPRESSION RATIO | 7.8 to 1 | 8.3 to 1 | 7.9 to 1 | 21.3 to 1 |
| SAE NET HORSEPOWER @ RPM | 115@4000* | 185@4000+ | 240@3800 | 148@3600 |
| SAE NET TORQUE (LB/FT) @ RPM | 210@800* | 285@2400+ | 375@3200 | 246@2000 |

† Produced by GM de Mexico
* California: 115 @ 3600 RPMs; torque 215 @ 1600 RPMs
+ California: 155 @ 4000 RPMs; torque 240 @ 2800 RPMs
§ California: 230 @ 3800 RPMs; torque 360 @ 2800 RPMs

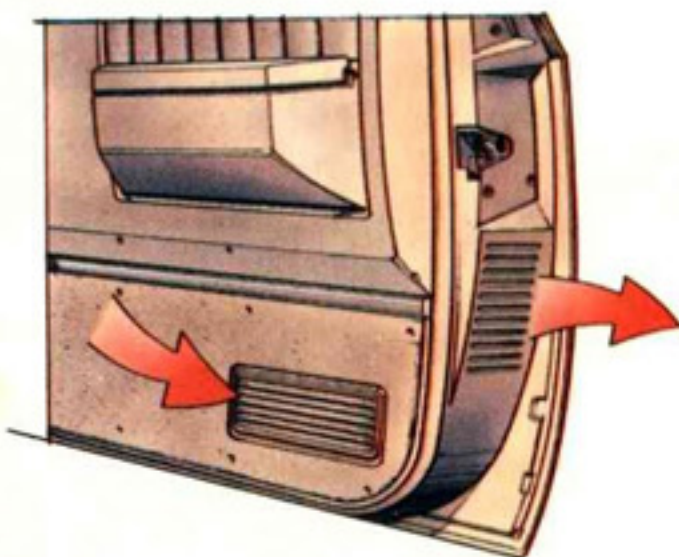
GMC

TRUCK

A TRUCKFUL OF VALUE

POWER FLOW-THROUGH VENTILATION

A standard comfort feature that draws outside air in through a large cowl-integrated plenum chamber when the heater fan is on, routes it through the cab, exiting through door-mounted vents. Provides outside air on demand.



Standard power flow-through ventilation

DOUBLE WALLS OF STEEL

Inner and outer steel panels in hood, doors, front fenders, and cab upper rear panel. Helps contribute to overall structural rigidity. Large panels are used in many areas including front-end sheet metal. Helps reduce seams where rust may start. Bathtub-type wheelhousings have attached shields to help reduce road splash into engine compartment. Protects engine and components.

ONE-PIECE DOOR FRAMES

One-piece door frame stampings, an integral part of the cab structure, provide precise fit, alignment, and sealing of doors. Reduces seams where water may penetrate to cause leaks and rust. Hinges are sturdy strap-type that stand up to repeated door slamming.

WIDESIDE CARGO BOX AND TAILGATE

Cargo box sidewalls and tailgate use double-wall construction for structural rigidity and to help protect outer panels from unsightly dents caused by shifting cargo. Tailgate latch is one-hand operated. Easy to operate. Gate opens flat to accommodate overhanging loads, or can be quickly removed entirely. Provides for versatility and ease of operation. Stake pockets have holes for cargo tie-down.

ALL SEASONS TIRES

All standard and optional steel-belted radial-ply 15" highway tires for C/K-1500 models feature an All Seasons tread for good year-round traction.

STURDY STEEL FRAME

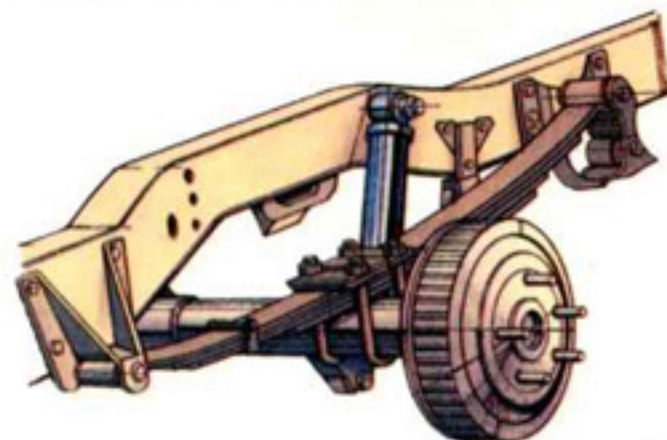
A rigid, ladder-type frame of steel side rails and crossmembers provides a strong foundation for cab and operating components. Helps prevent frame from laddering.

TOUGH GIRDER-BEAM 2-WD FRONT SUSPENSION

On 2-WD models control arms with computer-selected, matched coil springs move independently to soak up road shocks and provide a smooth ride. Provides a balanced ride system.

4-WD FRONT SUSPENSION

Tough off-road components include hypoid driving axle, leaf springs, heavy-duty shock absorbers on selected models. Heavy-duty stabilizer bar provides good control on- and off-road.



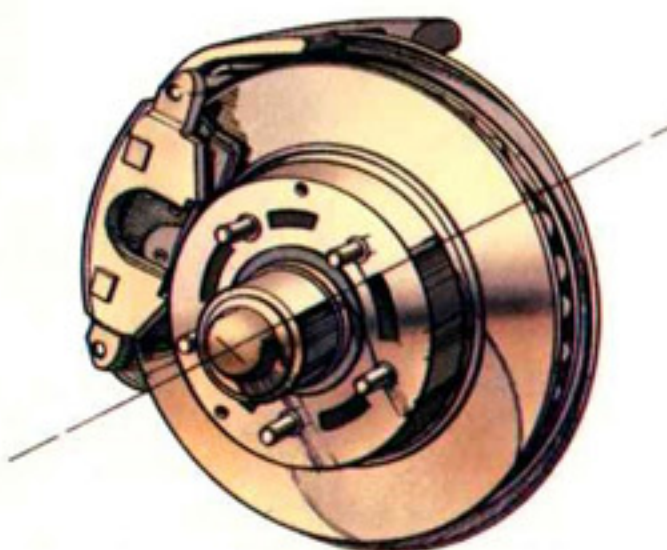
Rear suspension and shocks

SALISBURY-TYPE REAR AXLE

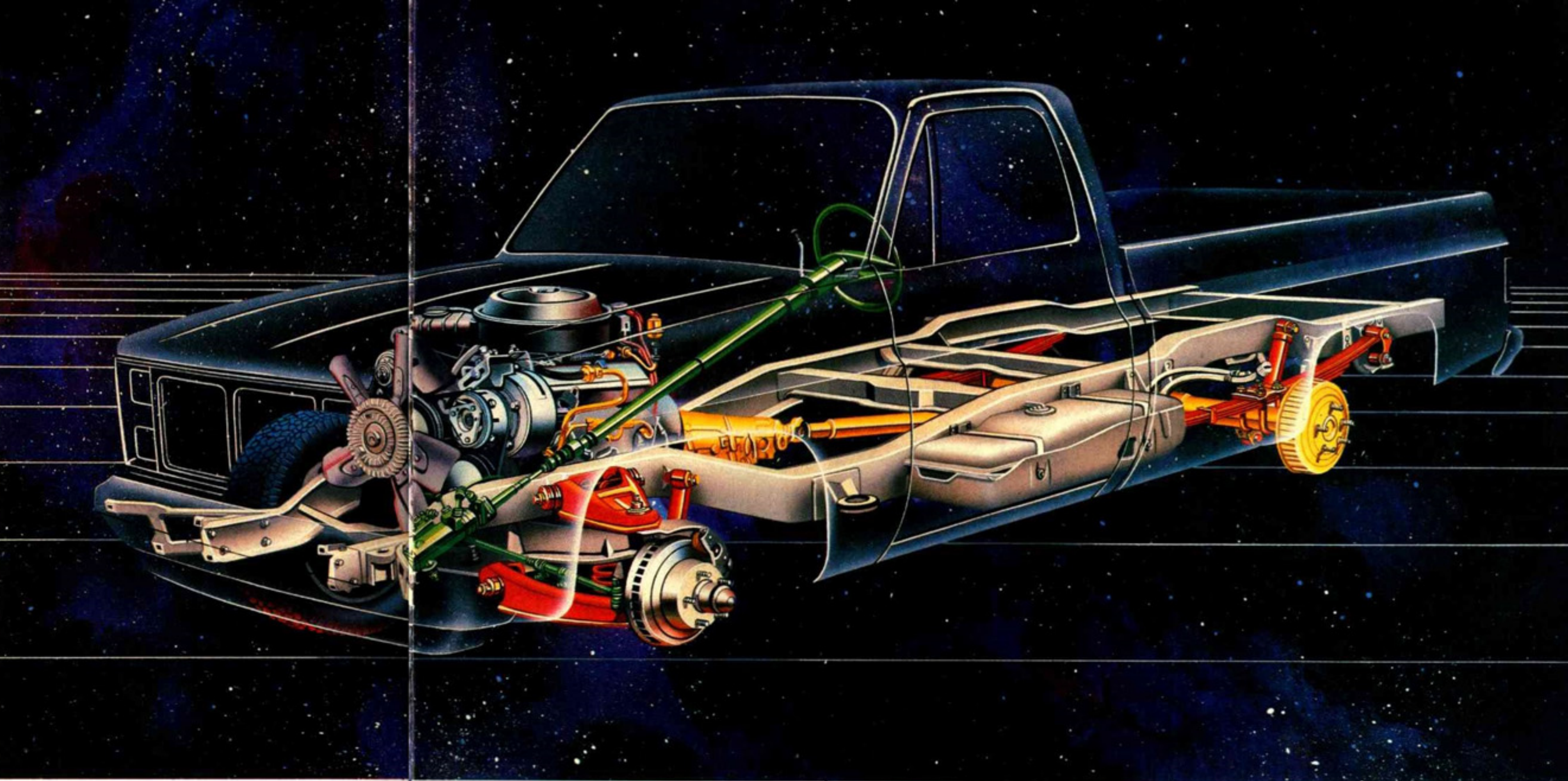
Semifloating or full-floating axles offer a wide range of ratios, some available with locking differential. Versatility of selection for your operation.

BRAKES COMPUTER-MATCHED TO VEHICLE GVWR

System includes self-adjusting, fin-cooled rear drum brakes and shielded front disc brakes with an audible lining-replacement warning. Power brakes are available for C-1500 models and standard for all other Pickups for easy operation.



Front disc brakes



MAINTENANCE-FREE BATTERIES

You'll never have to add water to the Delco Freedom II battery. Also the battery (two on diesel models) has a built-in charge indicator and corrosion-resistant terminals. Provides ease of maintenance.

HEIGHT-SENSING HEAVY-DUTY POWER BRAKES

Braking force is distributed proportionately to front and rear wheels by a sensing valve that responds to changes in vehicle trim height caused by variations in rear-axle load.

SHIELDED FUEL TANKS

Fuel tanks have a standard plastic shield to prevent stone damage. For 4-WD models there also is an available transfer case stone shield.



2-WD girder-beam independent front suspension

TWO-STAGE MULTILEAF REAR SUSPENSION

Multileaf springs contribute to a smooth ride. Vari-rate spring design provides progressively firmer support as load increases. Shock absorbers are counter-angled to help control power and brake hop.

HIGH-ENERGY IGNITION SYSTEM

Delivers up to 35,000 volts to each spark plug to help burn marginal fuel/air mixtures and contribute to fast coldweather starts. Standard on all gasoline engines.

WET-ARM WINDSHIELD WASHER/WIPER SYSTEM

Efficient and quiet-operating system features washer nozzles mounted on wiper arms for a precise spray of washer fluid. Improves windshield washing.



Generous behind-seat storage

BEHIND SEAT BACK STORAGE

All front seat backs, except Crew Cab and Bonus Cab, tilt forward for access to out-of-sight storage space. On Crew Cab models the rear seat tilts forward for out-of-sight storage. Seat back is finished in vinyl.

GMC PICKUPS FIGHT RUST

GMC has an ongoing anti-corrosion program that uses diverse measures to combat rust and keep your GMC Pickup looking good. The program utilizes special construction techniques; special

corrosion-resistant metals; paint treatment that includes zinc-rich primer, thick final primer coat, baked-on acrylic enamel finish coat; aluminum-wax preservative applied to selected lower inner body surfaces; special metals and coatings for selected nuts, bolts, and assemblies.

As part of the GM New Truck and Chassis Limited Warranty, perforation from corrosion is covered for three years ... Exhaust system components are not included. See your GMC Dealer for details of other limitations.



Protection Plan

GM Protection Plan ... An option that offers service protection beyond that provided by GM's New Truck and Chassis Limited Warranty. Available only in the USA and Canada during the 1986 model year. See your dealer for details.

GMC TRUCK

AVAILABLE ACCESSORIES



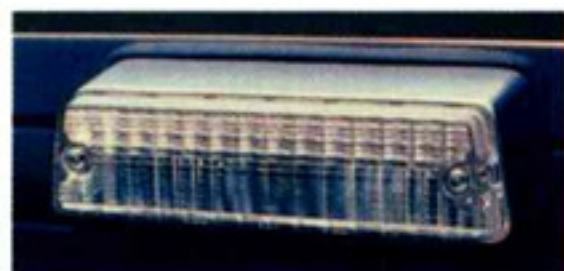
Below-eyeline
mirrors



Air conditioning



GM-Delco AM/FM stereo radio



Cargo area lamp



Chromed front bumper guards



Power windows
and/or power door locks



Electric clock
with solid-state
quartz mechanism



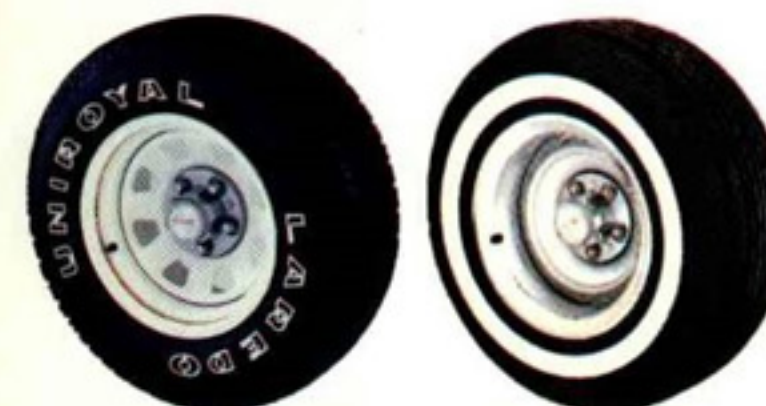
Comfortilt steering wheel



Sliding rear window



Sierra Classic 2-WD Pickup with deluxe two-tone paint scheme and other available equipment. Tires are supplied by various manufacturers.



Stylized wheels; tires supplied
by various manufacturers



Rally wheels



Cast aluminum wheels

POWERTRAINS

| ENGINE | ENGINE AVAILABILITY BY MODEL | TRANSMISSIONS | | | | | REAR AXLE RATIOS (STD TRANS/STD GVW) (1) | |
|---|------------------------------------|----------------|----------------|----------------------|----------------------|----------------|---|----------------|
| | | MANUAL | | AUTOMATIC | | | STD | AVAILABLE |
| | | 3-SPD (MM3) | 4-SPD (MM4) | 4-SPD OD (MM7) | 4-SPD OD (MX0) | 3-SPD (MX1) | | |
| 4.3 LITER V6 GAS (LB1) | S TC107-10903 (2) | S | A | A | A | A | 2.73 | 3.08 |
| | S TC107-10903 (3) | S | | A | A | | 2.73 | |
| | S TC20903 (2) (4) | | S | | A | | 3.42 | 3.73 |
| | S TK107-10903 | | A | S (2) | A | | 3.42 | 3.73 |
| 4.8 LITER I6 GAS (L25) | S TC20903 (5); TC20943 | | S | | | | 4.10 | 4.56 |
| | S TC309-310-31403 (SR) | | S | | | A (6) | 4.10 | 4.56 |
| | S TC/TK310-31403 (DR) | | S | | | | 4.56 | |
| | S TC30943 (SR) | | S | | | A (6) | 4.10 | 4.56 |
| | S TC30943 (DR) | | S | | | A (6) | 4.56 | |
| | S TK20903 (5) | | S | | | | 4.10 | |
| | S TK309-31003 (SR) | | S | | | A (6) | 4.56 | |
| 5.0 LITER V8 GAS WITH ESC (LE9) (2) | A TC107-10903S | A | A | A | A | | 2.73 | 3.08 |
| | A TC20903 (4) | | S | | A | | 3.23 | 3.42 |
| | A TK107-10903 | | A | S | A | | 3.42 | 3.73 |
| 5.0 LITER V8 GAS (LF3)(3) | A TC107-10903 | | | | A | | 2.73 | 3.08 |
| LD EMISSION 5.7 LITER V8 GAS (LS9) | A TC20903 (3) (4) | | | | A | | 3.23 | 3.42 |
| | A TK107-10903 (3) | | | | A | | 2.73 | 3.08 |
| | S TK20903 (2) (4) | | S | | A | | 3.23 | 3.42 |
| HD EMISSION 5.7 LITER V8 GAS (LT9) | A TC20903 (5) | | S | | | A | 3.42 | 3.73/4.10 |
| | A TC20943 | | S | | | A | 3.73 | 4.10/4.56 |
| | A TC309-310-31403 (SR) | | S | | | A | 3.73 | 4.10/4.56 |
| | A TC30903 (DR) | | S | | | A (7) | 4.10 | 4.56 |
| | A TC310-31403 (DR) | | S | | | A (7) | 3.73 | 4.10/4.56 |
| | A TC30943 (SR) | | S | | | A | 3.73 | 4.10/4.56 |
| | A TC30943 (DR) | | S | | | A (7) | 4.10 | 4.56 |
| | A TK20903 (5) | | S | | | A | 3.42 | 3.73/4.10 |
| | A TK309-31003 (SR) | | S | | | A | 3.73 | 4.10/4.56 |
| | A TK30903 (DR) | | S | | | A (7) | 4.10 | 4.56 |
| | A TK310-31403 (DR) | | S | | | A (7) | 3.73 | 4.10/4.56 |
| | A TK30943 (SR/DR) | | S | | | A | 3.73 | 4.10/4.56 |
| | A TC20903 (5); TC20943 | | S | | | A | 3.21 | 3.73/4.10/4.56 |
| | A TC309-310-31403 (SR) | | S | | | A | 3.21 | 3.73/4.10/4.56 |
| 7.4 LITER V8 GAS (LE8) | A TC30903-43 (DR) | | S | | | A (7) | 3.73 | 4.10/4.56 |
| | A TC310-31403 (DR) | | S | | | A (7) | 3.73 | 4.10/4.56 |
| | A TC30943 (SR) | | S | | | A | 3.21 | 3.73/4.10/4.56 |
| | A TK309-31003 (SR) | | S | | | A | 3.73 | 4.10/4.56 |
| | A TK309-310-31403 (DR) | | S | | | A (7) | 3.73 | 4.10/4.56 |
| | A TK30943 (SR/DR) | | S | | | A | 3.73 | 4.10/4.56 |
| | A TK30943 (SR/DR) | | S | | | A | 3.73 | 4.10/4.56 |
| LD EMISSION 6.2 LITER V8 DIESEL (LH6) | S TC107-10903 (2) | | A | S | A | | 2.73 | 3.08/3.42 |
| | S TC20903 (2) (4) | | S | | A | | 3.42 | 3.73 |
| | S TK107-10903 (2) | | S | | A | | 3.08 | 3.42 |
| | S TK20903 (2) (4) | | S | | A | | 3.73 | 4.10 |
| HD EMISSION 6.2 LITER V8 DIESEL (LL4) | S TC20903 (5) | | S | | | A | 3.73 | 4.10 |
| | S TC20943 | | S | | | A | 3.73 | 4.10 |
| | S TC309-310-31403 (SR) | | S | | | A | 4.10 | 4.56 |
| | S TC/TK30903 (DR) | | S | | | A (7) | 4.10 | 4.56 |
| | S TC/TK310-31403 (DR) | | S | | | A (7) | 4.10 | 4.56 |
| | S TC30943 (SR) | | S | | | A | 4.10 | 4.56 |
| | S TC30943 (DR) | | S | | | A (7) | 4.10 | 4.56 |
| | S TK20903 (5) | | S | | | A | 3.73 | 4.10/4.56 |
| | S TK20943 | | S | | | A | 3.73 | 4.10/4.56 |
| | S TK309-31003 (SR) | | S | | | A | 4.10 | 4.56 |
| | S TK30943 (SR) | | S | | | A | 4.10 | 4.56 |
| | S TK30943 (DR) | | S | | | A | 4.10 | 4.56 |

S - Standard
A - Available at extra cost
SR = Single rear wheels
DR = Dual rear wheels
ESC = Electronic spark control

1 - Consult your dealer for other axle
ratio applications, including
High Altitude Emissions (NA6).
2 - Except California
3 - California only

4 - Below 8500-lb GVWR
5 - Above 8500-lb GVWR
6 - Not recommended
7 - Requires V02 HD
transmission oil cooler

AVAILABLE APPEARANCE

EQUIPMENT includes: • High Sierra and Sierra Classic interior/exterior trim packages • Deluxe front appearance (includes dual headlamps) • Color-keyed rubber front floor mats for Sierra Classic • Black and bright body side moldings (Wideside) • Custom and deluxe molding packages (Wideside) • Chromed front bumper guards • Chromed rear bumper • Door edge guards • Rally wheels or styled wheels (C/K-1500) • Cast aluminum wheels (C/K-1500) • Bright wheel covers.

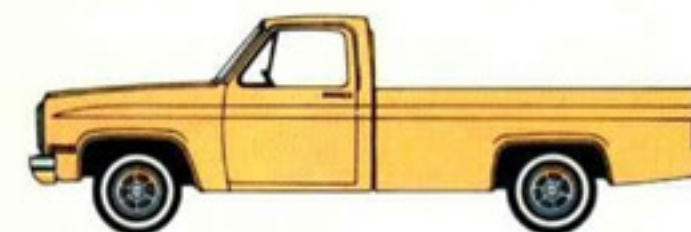
AVAILABLE COMFORT AND

CONVENIENCE EQUIPMENT includes: • Air conditioning • Delco radios include windshield antenna: AM, AM/FM, AM/FM stereo, AM/FM stereo with cassette • Electronic speed control • Intermittent windshield wipers • Cigarette lighter with ashtray illumination • Gage package: volt-meter, oil pressure and temperature gages • Electric clock • Power door locks • Power windows • Tinted glass, all windows • Dome lamp with door-operated switches • Mirrors: camper, West Coast, below-eyeline • Halogen hi-beam headlamps • Roof marker lamps.

AVAILABLE CHASSIS

EQUIPMENT includes: • Commercial special chassis equipment (C-3500) • High-altitude emission equipment • Air cleaner pre-cleaner • 66-amp Delcotron generator • HD and auxiliary Delco Freedom batteries • HD radiator • Engine oil cooler • HD radiator and transmission oil cooler • Locking differential rear axle • HD front/rear springs • Shock absorbers, HD front/rear • Front Quad Shocks (K-1500/2500) • Front stabilizer bars (2-WD models) • 4-WD transfer case shield • Camper Special equipment • Engine block heater • Dual rear wheels.

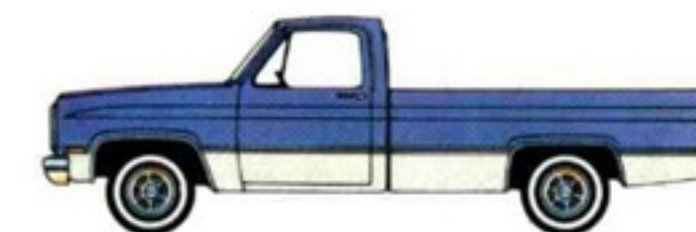
AVAILABLE PAINT SCHEMES



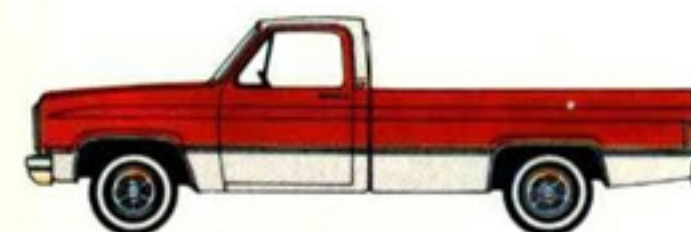
Standard solid-color paint. See colors on back cover. Ask about available Value Decor package.



Available ZY2 Conventional Two-Tone includes back panel beltline molding, except on Sierra Classic where standard



Available ZY3 Special Two-Tone for single-rear-wheel Wideside includes body side/rear moldings on Sierra models, wheel opening moldings on Sierra and High Sierra models, and bright trim for front side marker and taillamps on Sierra models.



Available ZY4 Deluxe Two-Tone combines paint placement and moldings of Conventional and Special Two-Tone schemes (single-rear-wheel Wideside models only)



Available ZY5 Exterior Decor package for single-rear-wheel Wideside. Includes moldings in Special Two-Tone scheme plus dual-tone body side/rear decal striping keyed to body color. Two-tone paint applies secondary color between striping and molding. Stand-up hood ornament included on gasoline models. On Sierra Classic, back panel applique and molding are deleted.



Available ZY9 Special Heavy Hauler Two-Tone paint and trim for dual-rear-wheel Wideside Pickups



STANDARD AND AVAILABLE EQUIPMENT

| TRIM LEVEL | | SIERRA (STD) | HIGH SIERRA (Z62) | SIERRA CLASSIC (YE9) | |
|---------------------------|---|---|-------------------------|----------------------------|-------|
| EXTERIOR APPEARANCE | | | | | |
| GRILLE/HEADLAMP BEZELS | Light/Dark Argent Painted Grille; Bezels for Single Headlamps | | S | S | — |
| | Light/Dark Argent Painted Grille; Bezels for Dual Headlamps | | A (1) | A (1) | S |
| IDENTIFICATION | Body Side Nameplate | Bonus Cab: "Bonus Cab" | S | S | S |
| | | Crew Cab: "3+3" | S | S | S |
| | Front Fender Nameplate | Plate with Trim Level and Series Designation | S | S | S |
| | | "6.2 Liter Diesel" Plate (diesel models) | S | S | S |
| | Grille Lettering | Integral GMC Letters | S | — | — |
| | | Bright Applied GMC Letters | A (1) | S | S |
| | Hood Ornament | Bright with "6.2 Liter Diesel" Let- tering (diesel models) | S | S | S |
| | | Bright with GMC Lettering (gas- oline models) | A (2) | A (2) | A (2) |
| | Tailgate Identi- fication | Bright Applied GMC Letters (Wideside only) | — | — | S |
| | | "Diesel 6.2L" Nameplate (Wide- side diesel models) | S | S | S |
| ORNAMENTATION | Body Side/ Rear Moldings (single rear wheel Wide- side) | Black Plastic with Bright Trim | A | S | — |
| | | Bright Plastic with Black Trim | A (3) | A | — |
| | | Custom Black Plastic with Bright Trim | A (3)(4) | A (4) | — |
| | | Deluxe Bright Plastic with Black Trim | A (3)(4) | A (4) | S (4) |
| | Bright Cab Back Panel Beltline Moldings | | — | — | S |
| | Bright Drip Moldings Over Side Doors | | S | S | S |
| | Bright Grille and Headlamp Bezel Outline Moldings | | S | S | S |
| | Bright Lamp Trim | Front Side Marker | — | S | S |
| | | Side Rear Clear- ance (dual rear wheel Wideside) | — | S | S |
| | | Tail (Wideside only) | — | S | S |
| | Bright Tailgate Applique (Wide- side only) | | — | — | S |
| | Bright Windshield & Rear Window Moldings | | — | S | S |
| WHEELS/WHEEL TRIM | Bright Metal Hubcaps (single rear wheel models) | | S | S | S |
| | Bright Metal Wheel Covers (C-3500 with dual rear wheels only) | | A | A | A |
| | Bright Metal Wheel Covers (C/K-1500 only) | | A | A | A |
| | Cast Aluminum Wheels (C/K-1500 only) | | A | A | A |
| | Silver Painted Rally Wheels (C/K-1500 only) | | A | A | A |
| | Special Bright Metal Wheel Covers (C/K-2500; C-3500 with single rear wheels only) | | A | A | A |
| | White Painted Conventional Wheels (includes spare on C/K-1500) | | S | S | S |
| | White Painted Styled Wheels (C/K-1500 only) | | A | A | A |

| TRIM LEVEL | | | SIERRA (STD) | HIGH SIERRA (Z62) | SIERRA CLASSIC (YE9) |
|--------------------------------|--|--|-----------------|-------------------------|----------------------------|
| INTERIOR APPEARANCE | | | | | |
| COWL TRIM PANELS | Full Color- Keyed Plastic | Gasoline Models | — | — | S |
| | | Diesel Models | S | S | S |
| DOOR TRIM PANELS | Cloth Insert in Armrest Area | | — | — | S |
| | Color-Keyed Plastic Main Body with Integral Armrests | | S | S | S |
| | Front Door Closing Assist Straps and Map Pockets | | — | — | S |
| | Lower Carpeted Area with Bright Trim | | — | — | S |
| | Rear Door Ashtrays (4-Door Cab) | | S | S | S |
| | Upper Inserts | Black Crackle- Finish with Silver Outline (2-Door Cab) | — | S | — |
| | | Pewter-Tone Brushed Metal Finish | — | — | S |
| FLOOR COVERING | Color-Keyed Carpeting (except Bonus Cab rear compartment) | | — | — | S |
| | Color-Keyed Rubber (except Bonus Cab rear compartment) | | — | S | — |
| | Embossed Black Rubber (5) | | S | — | — |
| HEADLINER & MOLDINGS | 2-Door Cab: Color-Keyed Perfo- rated Cloth on Molded Fiberglass with Matching Retainer Moldings including Windshield Pillars and Upper Rear Quarter Panels | | — | — | S |
| | 4-Door Cab: Full-Length, Neutral- Colored Perforated Cloth on Molded Fiberglass with Matching Retainer Moldings including Windshield Pillar and Center Door Pillar Moldings | | — | S | S |
| INSTRUMENT PANEL TRIM | Instrument Cluster Bezel | Black Crackle- Finish and Bright Trim | S | — | — |
| | | Pewter-Tone Brushed Metal Finish and Bright Trim | — | S | S |
| INSTRUMENT PANEL TRIM | Instrument Panel Pad Applique | Black Crackle- Finish with Specific Name- plate | S | S | — |
| | | Pewter-Tone Brushed Metal Finish with Specific Name- plate | — | — | S |
| STEERING WHEEL TRIM | Black Horn Button with Red GMC Lettering | | S | S | — |
| | Black Horn Button with Red GMC Lettering and Bright Trim | | — | — | S |
| COMFORT/CONVENIENCE/PROTECTION | | | | | |
| BUMPERS | Chromed Front | | S | S | S |
| | Chromed Rear | | A | A | A |
| | Chromed Rear Step-Type (Wideside only) | | A | A | A |
| | Silver Painted Rear Step-Type | | A | A | A |
| COAT HOOKS | One (2-Door Cab); Three (4-Door Cab) | | S | S | S |
| FLOOR MATS | Color-Keyed Rubber; Front Only | | — | — | A |
| GLASS | Clear Safety Glass All-Around | | S | S | S |
| | Sliding Rear Window to Replace Fixed Rear Window | | A | A | A |
| | Tinted Safety Glass All-Around (except optional sliding rear window) | | A | A | A |
| GUARDS | Bright Door Edge | | A | A | A |
| | Chromed Front Bumper | | A | A | A |
| HEATING/COOLING | Air Conditioning, Outside Air Type | | A | A | A |
| | Cold Climate Package (gasoline models) | | A | A | A |
| | Flow-Through Power Ventilation | | S | S | S |

| TRIM LEVEL | | SIERRA (STD) | HIGH SIERRA (Z62) | SIERRA CLASSIC (YE9) |
|--|---|---------------------------------------|-------------------------|----------------------------|
| COMFORT/CONVENIENCE/PROTECTION (contd) | | | | |
| HEATING/COOLING (contd) | Heater/Defogger, Heavy-Duty Outside Air Type (diesel models) | A | A | A |
| | Heater/Defogger, Outside Air Type | S | S | S |
| HORN | Single Electric (Low-Note) | S | S | S |
| | Additional Electric (High-Note) | — | S | S |
| INSTRUMENT CLUSTER | Gage-Type | A | A | S |
| | Quartz-Type Electric Clock (requires gage-type cluster) | A | A | A |
| | Warning Light Type | S | S | — |
| INSTRUMENT PANEL | Central Tip-Out Ashtray | S | S | S |
| | Cigarette Lighter with Ashtray Illumination | A | S | S |
| | Color-Keyed Energy-Absorbing Pad | S | S | S |
| | Right-Hand Stowage Compartment with Latch | S | S | S |
| INTERIOR LAMPS | Dome (includes door-operated switches for dome/map lights) | A | S | S |
| | Map (under instrument panel at center) | S | S | S |
| MIRRORS | Dual Bright Exterior, Conventional Type | S | S | S |
| | Dual Painted Exterior, Below- Eyeline Type | A | A | A |
| | Dual Painted Exterior, West Coast Type (C/K-3500 models) | A | A | A |
| | Dual Stainless Steel Exterior, Below-Eyeline Type | A | A | A |
| | Dual Stainless Steel Exterior; Camper Type | A | A | A |
| | Interior Rear View, Prismatic Type | S | S | S |
| | Interior Right-Hand Visor | — | — | S |
| | Available separately or together in Operating Convenience Package | A | A | A |
| RADIOS/ANTENNAS | AM, AM/FM, AM/FM Stereo, and AM/FM Stereo with Cassette Tape (regular and full-feature) | A | A | A |
| | Windshield Antenna (included with optional radios) | A | A | A |
| SEATS/SEAT BELTS | Folding Backrest with Inertia Latches | Front (2-Door Cab) Rear (Crew Cab) | S S | S S |
| | Full-Foam 3-Passenger Front Bench with Outboard Retractable Lap/Shoulder Belts and Manual Center Lap Belt | | S | S |
| | Full-Foam 3-Passenger Rear Bench with Outboard Retractable Lap Belts and Manual Center Lap Belt (Crew Cab) | | S | S |
| | | | | |
| SIDE RAILS | Chromed; Mounted Atop Pickup Box Side Panels (Wideside only) | A | A | A |
| SPARE WHEEL/TIRE CARRIER | Conventional Type, Frame- Mounted at rear | C/K-1500 C/K-2500/3500 | S (6) | S (6) |
| | Glide-Out Type, Frame-Mounted at Rear | | A | A |
| | Side-Mounted Type, Inside of Pickup Box at Left (Wideside only) | | A | A |
| STEERING WHEEL/ COLUMN | Black Energy-Absorbing Column with Anti-Theft Locking | S | S | S |
| | Two-Spoke Soft Black Plastic Wheel, Comfortilt Type | A | A | A |
| | Two-Spoke Soft Black Plastic Wheel, Conventional Type | S | S | S |
| SUNSHADES | Color-Keyed Padded LH/RH | S | S | S |
| WINDSHIELD WIPERS/ WASHERS | Electric; Two-Speed Wipers; Wet- Arm Washers | S | S | S |
| | Electric; Two-Speed Wipers with Intermittent Wiper Feature; Wet- Arm Washers | A | A | A |
| OTHER EQUIPMENT (See your GMC Dealer for details.) | | | | |

- S - Standard
A - Available
1 - Part of optional Deluxe Front Appearance package.
2 - Part of optional Special Heavy Hauler Two-Tone or Exterior Decor package for Wideside Pickups.
3 - Includes bright side marker and taillamp trim.
4 - Includes bright wheel-opening moldings.
5 - Color-keyed mat substituted for diesel engine models.
6 - Included with available spare tire.

IMPORTANT! A WORD ABOUT THIS CATALOG:

We have tried to make this catalog as comprehensive and factual as possible and we hope you find it helpful. However, since the time of printing, some of the information you'll find here may have been updated. Also, some of the equipment shown or described throughout this catalog is available as factory-installed options, as dealer accessories, and as specialized equipment from various independent suppliers at extra cost. Your dealer has details and, before ordering, you should ask him to bring you up to date.

The right is reserved to make changes at any time, without notice, in prices, colors, materials, equipment, specifications, and models. Check with your GMC Dealer for complete information.

A WORD ABOUT ASSEMBLY, COMPONENTS, AND OPTIONAL EQUIPMENT IN THESE GMC PRODUCTS:

The GMC Trucks described in this catalog are assembled at facilities operated by General Motors. These vehicles incorporate thousands of different components produced by car and truck groups and various component divisions of GM and by various suppliers worldwide to General Motors. From time to time during the manufacturing process, it may be necessary, in order to meet public demand for particular vehicles or equipment, or to meet federally mandated emissions, safety, and fuel economy requirements, or for other reasons, to produce GMC products with different components or differently sourced components than initially scheduled. All such components have been approved for use in GMC products and will provide the quality performance associated with the GMC name.

With respect to extra-cost optional equipment, make certain you specify the type of equipment you desire on your vehicle when ordering it from your dealer. Some options may be unavailable when your truck is built. Your dealer receives advice regarding the current availability of options. You may ask the dealer for this information. GM also requests the dealer to advise you if an option you ordered is unavailable. We suggest that you verify that your truck includes the optional equipment you ordered, or, if there are changes, that they are acceptable to you.

These vehicles also are available under the Chevrolet nameplate (Chevrolet Pickup Series C/K10-20-30 and Chassis-Cab Series C20-30 and K30).

A WORD ABOUT UPDATED SERVICE INFORMATION:

GMC Truck and Coach Operation regularly sends its dealers useful service bulletins about GMC Truck products. GMC Truck and Coach Operation monitors product performance in the field. We then prepare bulletins for servicing our products better. Now you can get these bulletins, too. Ask your dealer. To get ordering information, call toll free 1-800-551-4123.

TECHNICAL INFORMATION

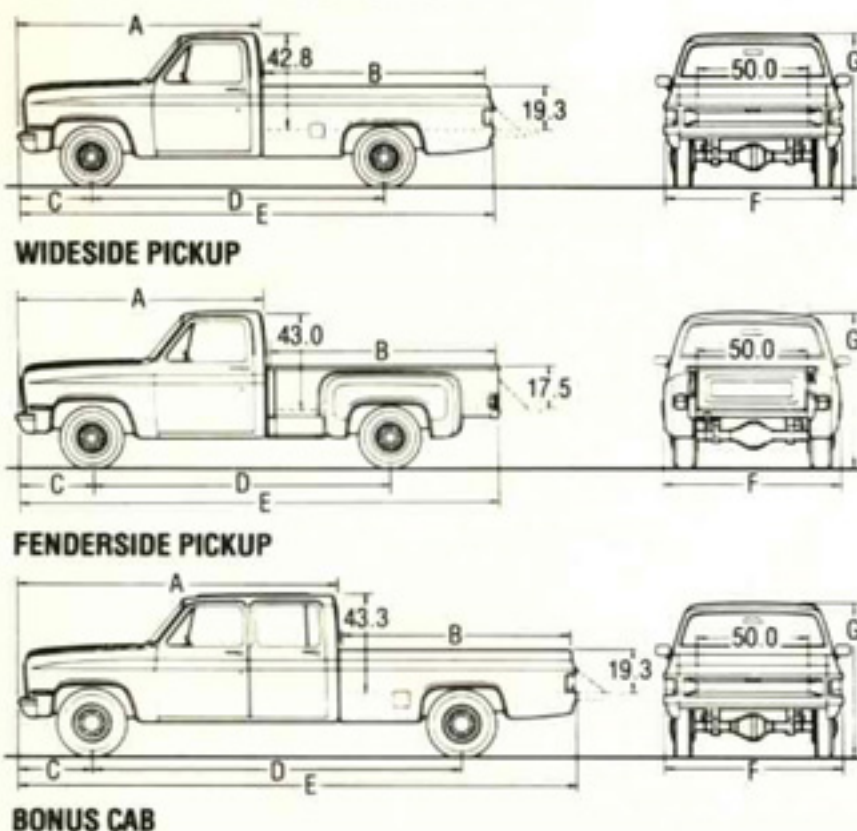
| PICKUP MODEL TYPE | | 2-WHEEL DRIVE | | | |
|------------------------------|-----------------|---------------------------------------|--------------|----------------|----------------|
| SERIES | | C-1500 | C-2500 | C-2500 | C-3500 |
| GVW RATING (lb) | Standard | 4900 (3) | 6400 | 8600 (1) | 9000 |
| | Maximum | 6100 | 7200 | — | 10,000 |
| ENGINES/TRANSMISSIONS | | (see Powertrains chart on Page 17) | | | |
| FRONT SUSPENSION | | independent, coil springs | | | |
| Capacity (lb) | | 2950 (3) | 3800 | 3800 | 3800 (4) |
| Spring capacity (lb) (5) | Standard | 1475 (3) | 1750 | 1900 | 1900 (4) |
| | Optional | (6) | 1900 | — | — |
| Shock absorber diameter (mm) | Standard | 25 | 25 | 32 | 32 |
| | Optional | 32 | 32 | — | — |
| Stabilizer bar diameter (in) | Standard | — | — | 1.06 | — |
| | Optional | 1.06 | 1.06/1.25 | 1.25 | 1.06/1.25 |
| REAR SUSPENSION | | salisbury axle, leaf springs | | | |
| Axle capacity (lb) | | 3750 | 5700 | 6000 (4) | 7500 |
| Spring capacity (lb) (5) | Standard | 1550 | 2000 | 3000 | 3500 |
| | Optional | 1750, 2000 | 2600, 3000 | — | 3750 |
| Shock absorber diameter (mm) | Standard | 25 | 25 | 32 | 32 |
| | Optional | 32 | 32 | — | — |
| BRAKES | | hydraulic, disc/drum | | | |
| Standard booster | Gasoline models | vac (8) | vac | vac | hyd |
| | Diesel models | — | — | — | — |
| Parking | | cable to rear wheels | | | |
| STEERING | | std: manual; opt: power | | | |
| TIRES | | various types/sizes | | | |
| Standard (radial ply) | | P195/75R15 (3) | LT215/85R16C | LT235/85R16D/E | LT235/85R16D/E |
| Optional | | consult your GMC Dealer for details | | | |
| FUEL TANK CAPACITY (gal) | | 16 (9), 20 | 20 | 20 | 20 |
| Standard single | Gas models | 16 | 16 | 20 | 20 |
| | Diesel models | 16 (9), 20 | 20 | 20 | 20 |
| BATTERY | | 12-volt, maintenance-free | | | |
| CCA rating | Gasoline models | std: 405 (500 with 4.3L V6); opt: 540 | | | |
| | Diesel models | std: dual 540 | | | |
| GENERATOR | | 12-volt, alternating current | | | |
| Amp rating | Gasoline models | std: 37; opt: 66 | | | |
| | Diesel models | std: 66 | | | |

| PICKUP MODEL TYPE | | 4-WHEEL DRIVE | | | |
|------------------------------|-----------------|---------------------------------------|--------------|----------------|----------------|
| SERIES | | K-1500 | K-2500 (2) | K-2500/C6P | K-3500 |
| GVW RATING (lb) | Standard | 6100 | 6600 | 8600 | 9200 |
| | Maximum | — | — | — | 10,000 |
| ENGINES/TRANSMISSIONS | | (see Powertrains chart on Page 17) | | | |
| FRONT SUSPENSION | | salisbury axle, leaf springs | | | |
| Capacity (lb) | | 3600 | 3800 | 3800 | 4500 |
| Spring capacity (lb) (5) | Standard | 1850 | 1850 | 1850 | 2250 |
| | Optional | 2250 (7) | 2250 | 2250 | — |
| Shock absorber diameter (mm) | Standard | 25 | 25 | 32 | 32 |
| | Optional | 32 | 32 | — | — |
| Stabilizer bar diameter (in) | Standard | 1.25 | 1.25 | 1.25 | 1.25 |
| | Optional | — | — | — | — |
| REAR SUSPENSION | | salisbury axle, leaf springs | | | |
| Axle capacity (lb) | | 3750 | 5700 | 6000 | 7500 |
| Spring capacity (lb) (5) | Standard | 1875 | 2000 | 3000 | 3500 |
| | Optional | — | — | — | 3750 |
| Shock absorber diameter (mm) | Standard | 25 | 25 | 32 | 32 |
| | Optional | 32 | 32 | — | — |
| BRAKES | | hydraulic, disc/drum | | | |
| Standard booster | Gasoline models | vac | vac | vac | hyd |
| | Diesel models | — | — | — | — |
| Parking | | cable to rear wheels | | | |
| STEERING | | std: power | | | |
| TIRES | | various types/sizes | | | |
| Standard (radial ply) | | P235/75R15 | LT215/85R16C | LT235/85R16D/E | LT235/85R16D/E |
| Optional | | consult your GMC Dealer for details | | | |
| FUEL TANK CAPACITY (gal) | | 16 (9), 20 | 20 | 20 | 20 |
| Standard single | Gas models | 16 | 16 | 20 | 20 |
| | Diesel models | 16 (9), 20 | 20 | 20 | 20 |
| BATTERY | | 12-volt, maintenance-free | | | |
| CCA rating | Gasoline models | std: 405 (500 with 4.3L V6); opt: 540 | | | |
| | Diesel models | std: dual 540 | | | |
| GENERATOR | | 12-volt, alternating current | | | |
| Amp rating | Gasoline models | std: 37 (66 for K-3500); opt: 66 | | | |
| | Diesel models | std: 66 | | | |

CCA = Cold Cranking Amps
 1- Requires C6P on 2-door cab models.
 2- Not available in California.
 3- Varies for diesel models.
 Consult your GMC Dealer.

4- Varies for 4-door cab models. Consult your GMC Dealer.
 5- At ground, each.
 6- 1625/1700 lbs; for gas models only.
 7- Recommended for snowplow usage only.
 8- Manual brakes at 4900-lb GVWR; vacuum power brakes available.
 9- 117.5" wheelbase models only.

PICKUP DIMENSIONS *



PICKUP DIMENSIONS *

| WIDESIDE | A | B | C | D | E | F | G |
|------------|-------|------|------|-------|-------|------|------|
| TC10703 | 109.3 | 78.2 | 33.8 | 117.5 | 193.5 | 79.6 | 69.2 |
| TC10903 | 109.3 | 98.1 | 33.8 | 131.5 | 212.2 | 79.6 | 69.2 |
| TC20903 | 109.3 | 98.1 | 33.8 | 131.5 | 212.2 | 79.6 | 72.2 |
| TC20943 | 142.3 | 98.1 | 33.8 | 164.5 | 246.4 | 79.6 | 73.6 |
| TC30903 | 109.3 | 98.1 | 33.8 | 131.5 | 212.2 | 79.6 | 73.6 |
| TC30943 | 142.3 | 98.1 | 33.8 | 164.5 | 246.4 | 79.6 | 73.7 |
| TK10703 | 109.3 | 78.2 | 33.8 | 117.5 | 193.8 | 79.6 | 73.4 |
| TK10903 | 109.3 | 98.1 | 33.8 | 131.5 | 213.7 | 79.6 | 73.4 |
| TK20903 | 109.3 | 98.1 | 33.8 | 131.5 | 213.7 | 79.6 | 74.2 |
| TK30903 | 109.3 | 98.1 | 33.8 | 131.5 | 212.2 | 79.6 | 76.4 |
| TK30943 | 142.3 | 98.1 | 33.8 | 164.5 | 246.4 | 79.6 | 76.3 |
| FENDERSIDE | A | B | C | D | E | F | G |
| TC10703 | 109.3 | 78.4 | 33.8 | 117.5 | 191.1 | 79.6 | 69.5 |
| TC20903 | 109.3 | 98.3 | 33.8 | 131.5 | 210.8 | 79.6 | 72.2 |
| TC30903 | 109.3 | 98.3 | 33.8 | 131.5 | 210.8 | 79.6 | 73.6 |
| TK10703 | 109.3 | 78.4 | 33.8 | 117.5 | 191.4 | 79.6 | 73.4 |
| TK20903 | 109.3 | 98.3 | 33.8 | 131.5 | 211.2 | 79.6 | 74.2 |

*Inches. Dimension E is without rear bumper.



NOTE: Due to printing irregularities, colors shown may vary from actual tones. Ask your dealer to show you accurate paint chips and fabric swatches. (M)-Metallic.



Let's Get it Together... Buckle Up
 Every new 1986 GMC Light Duty Truck delivered by a GMC Truck Dealer in the United States comes with a one-year, \$10,000 safety belt insurance certificate from MIC General Insurance Corporation at no additional charge. \$10,000 will be paid to the estate of any occupant who suffers fatal injuries as a result of an accident involving that vehicle while wearing a GM safety belt. Buckle up every time you drive.



GMAC

At your GMC Truck Dealer, financing or leasing your new GMC Truck is as easy as saying GMAC...the financial services people from General Motors.

