

1988 CHEVROLET
CARS AND TRUCKS

PLACE
POSTAGE
HERE



It's Chevrolet's best protection plan ever: A 6-year/60,000-mile warranty which demonstrates the confidence that Chevrolet has in the quality of its products. This limited warranty covers power-trains for 6 years/60,000 miles and includes 6-year/100,000-mile rust-through protection. See your Chevrolet dealer for the terms and conditions of this limited warranty. (Excludes Sprint and Spectrum models, which have separate warranties.)

**LET'S GET IT
TOGETHER...BUCKLE UP.**

LITHO IN U.S.A. DECEMBER 1987 4747

THE
Heartbeat
OF AMERICA

TODAY'S
CHEVROLET

THE BEAT GOES ON.

And the beat is strong. Brand-new Chevy offerings for '88 cover both car and truck categories. The Beretta Coupe, Corsica Sedan and Full-Size Pickup shown below are calculated to help ensure that more Americans buy Chevrolet than any other automotive nameplate.

Beretta is the new design for sporty driving: a 5-passenger performance coupe with contoured seating and full instrumentation, including tachometer. It's aero, alluring and most exciting (especially with the optional 2.8 Liter V6 with Multi-Port Fuel Injection).

Corsica is Chevy's answer to public demand for a new kind of sport sedan. It delivers ample room for five

(including a vacation-size trunk), crisp style and dollars-and-sense value, all within trim exterior dimensions which render Corsica the most aerodynamic Chevy sedan ever.

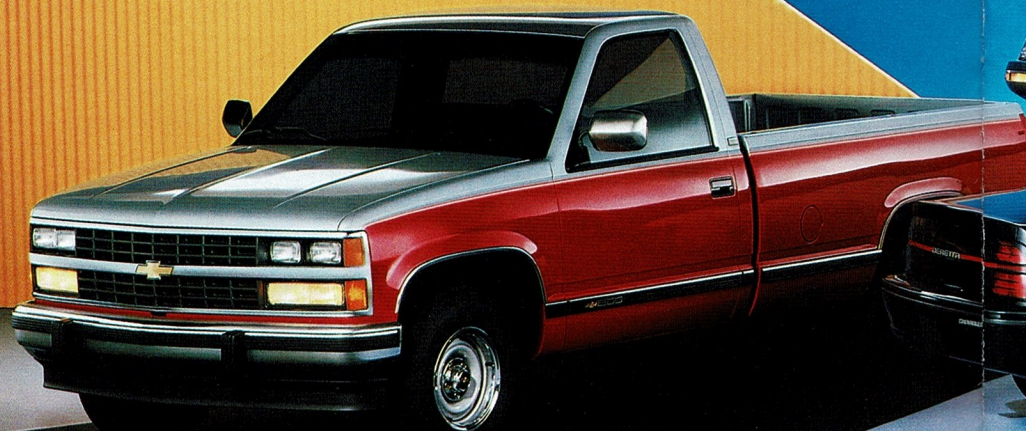
The totally redesigned Chevy Full-Size Pickup is measurably more than just a beautiful body (and interior). It's the hardest-working pickup that ever wore a Chevy bowtie. Standards include power steering, power brakes, rear-wheel anti-lock brake system (operates in two-wheel drive only), 5-speed manual transmission, exceptional anti-corrosion protection and all the traditional toughness and dependability of a Chevy truck.

There are, of course, a lot of other 1988 Chevrolet cars and trucks for you to consider. An exceptionally wide choice, backed by the most extensive parts and service network in the U.S.A. (nearly 5,000 servicing dealers nationwide). Backed as well by a 6-year/60,000-mile powertrain warranty. (See your dealer for terms and conditions of this new limited warranty. Not available on Sprint and Spectrum.)

You are cordially invited to leaf through this booklet and experience Today's Chevrolet. It ranges from big, roomy Caprices to Sprint minicars, from compact S-10 Pickups to huge, people-moving Sportvans. The list goes on. The beat goes on. Welcome to 1988, Chevy-style.

Contents

Affordable Fun	Pages 4-7
Sprint, Spectrum, Cavalier RS Coupe, 2WD S-10 Pickup, 2WD S-10 Blazer	
Family Room and Style	8-11
Celebrity, Cavalier Sedan, Corsica, Astro, Sportvan	
Sporty Performance	12-17
Cavalier Z24 Coupe, Nova Twin Cam 16-Valve Sedan, Camaro, Beretta, Corvette, S-10 Pickup, Full-Size Pickup, S-10 Blazer, Full-Size Blazer	
Full-Size Comfort	18-21
Caprice, Sportvan, Suburban, Extended Cab Full-Size Pickup	
Tough on the Job	22-23
Full-Size Pickup, Crew Cab, Chevy Van, Astro Van	



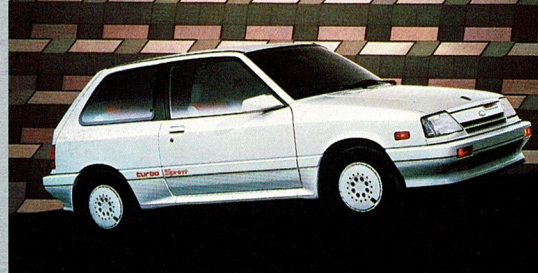
Corsica Sedan.



Beretta GT Coupe.

Sprint, Spectrum, Cavalier RS Coupe

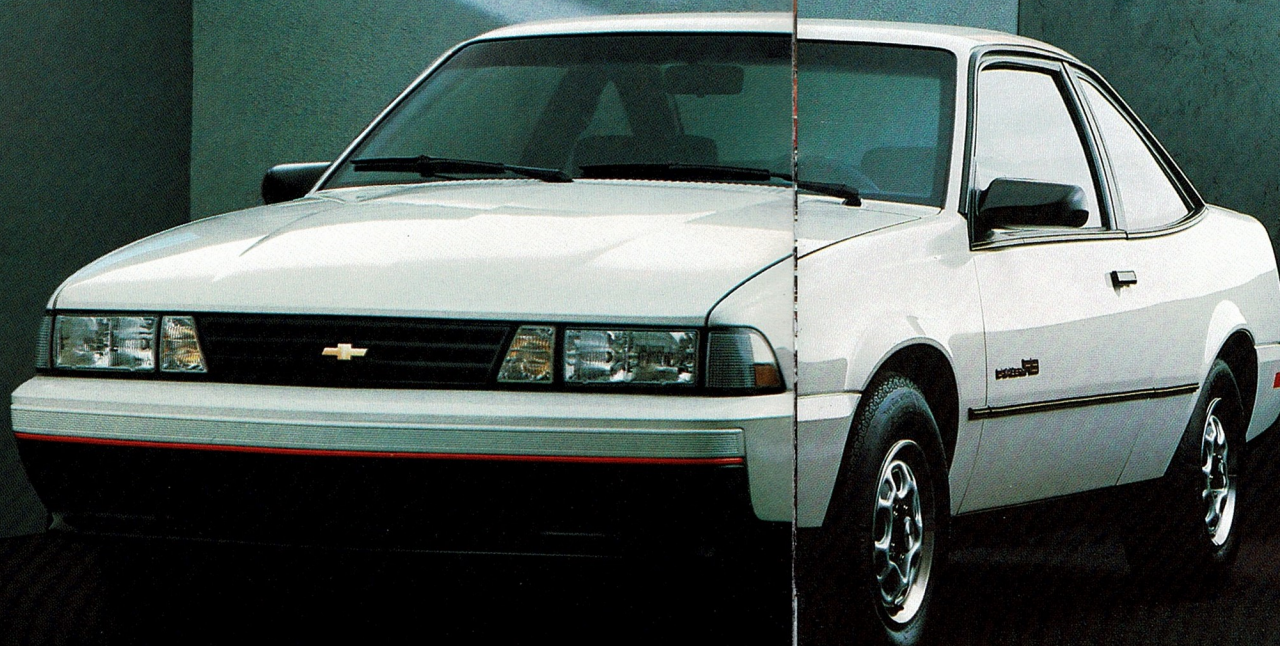
Who says you can't have fun on a budget? The three Chevrolets shown here, ranging from minicar through compact, all offer spirited, dependable performance, people-pleasing comfort, Chevy-style good looks and surprisingly low prices. It's all yours in cars of proven value and appealing quality.



Sprint, Chevy's smallest car, comes in a sassy turbocharged version called Turbo Sprint, as well as coupe or sedan with normally aspirated gasoline engine.



Chevy Spectrum combines sensible sub-compact virtues with advanced front-drive engineering and sophisticated sedan style.



The boldly redesigned Cavalier RS Coupe features a 2.0 Liter engine with Electronic Fuel Injection, blackout exterior decor and sport-styled interior.

2WD S-10 Blazer, 2WD S-10 Pickup

Chevy trucks are built to work — and to play. Two great examples: the compact 2WD S-10 Blazer and S-10 Pickup. Both offer plenty of easy-driving comfort, ample power for towing and hauling, and affordable Chevy prices. S-10 EL is Chevy's lowest-priced pickup, and 2WD S-10 Blazer is Chevy's lowest-priced sport utility vehicle.



S-10 EL is a hardworking, high-style 2WD truck with standard Electronic Fuel Injection. You can add to the style with optional Sunshine Stripes and Rally Wheels.



2WD S-10 Blazer is the compact sport utility built on a tough Chevy truck chassis. A properly equipped Blazer can tow up to 5,000 lbs., including trailer, passengers and cargo.

**Cavalier RS Sedan, Corsica Sedan,
Celebrity Sedan, Celebrity
Eurosport Wagon**

The comfort, room and ride you expect, plus the front-drive technology, fuel-injected performance and contemporary style you desire. Chevrolet lets you have it all in a selection of compact and mid-size cars with seating for five (Cavalier RS Sedan or Corsica Sedan), six (Celebrity Sedan), or up to eight (Celebrity Eurosport Wagon with optional seating).

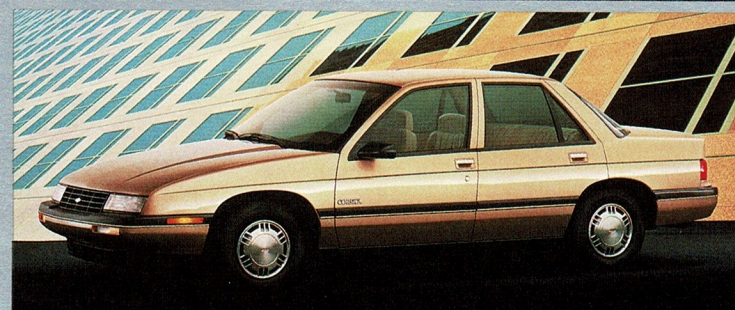


Celebrity Wagon, shown here with optional Eurosport package, has a special suspension, distinctive exterior decor, and carries up to 75.1 cu. ft. of cargo.

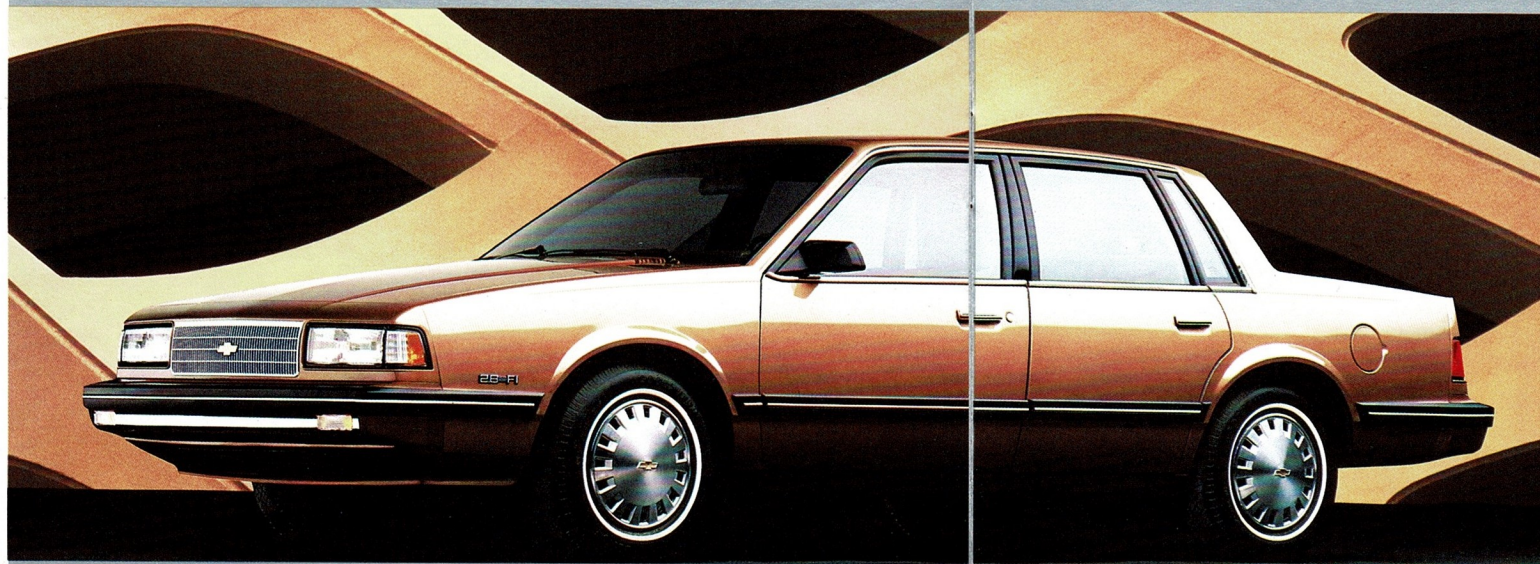
Cavalier RS Sedan is the sporty four-door with distinctive blackout exterior trim, console-style instrumentation and a Custom Interior.



The 1988 Corsica is the most aerodynamic sedan in Chevrolet history. Its standard 2.0 Liter Four with Electronic Fuel Injection is designed to make the performance as smooth as the style.



Celebrity is one of America's favorite sedans. Its standard virtues include Electronic Fuel Injection, automatic transmission, power brakes and an AM/FM stereo which may be deleted for credit.





Astro LT, the most luxurious Astro, features lush velour fabrics, reclining front bucket seats, special exterior colors and Rally Wheels.



Astro CL rises stylishly above the base Astro with color-keyed bumpers, deluxe grille and much more. Shown with optional aluminum wheels.

Astro, Sportvan

Chevy Astro is a compact family van with room for up to eight with available seating. The Chevy G20 Sportvan has even more interior space, plus optional V8 power. Both vans also have impressive towing capacities when properly equipped. So load up the gang, hitch up the trailer and head on out. Chevy's got the van for every family adventure.



Beauville, the top-of-the-line Sportvan model, features bright body moldings, a deluxe grille and special interior luxuries.



A 2.8 Liter V6 with Multi-Port Fuel Injection, fat Goodyear Eagle GT + 4 tires on aluminum wheels and other features assure Z24's continuing status as a performer.

Cavalier Z24 Coupe, Nova Twin Cam 16-Valve

For 1988, Chevy fills the bill in the sporty performance category in spades. For openers, consider Cavalier Z24 Coupe with its bold new aero styling, faster roof line and sculptured ground-effects panels. Also new for '88: a very sleek four-door called Nova Twin Cam 16-Valve, an exciting addition to the Nova family of sedan and hatchback models.

Nova Twin Cam has a high-output twin cam 16-valve 1.6 Liter engine, smooth-shifting 5-speed manual transmission, black metallic exterior and much more to arouse the performance buff.



Camaro, Beretta GT, Corvette

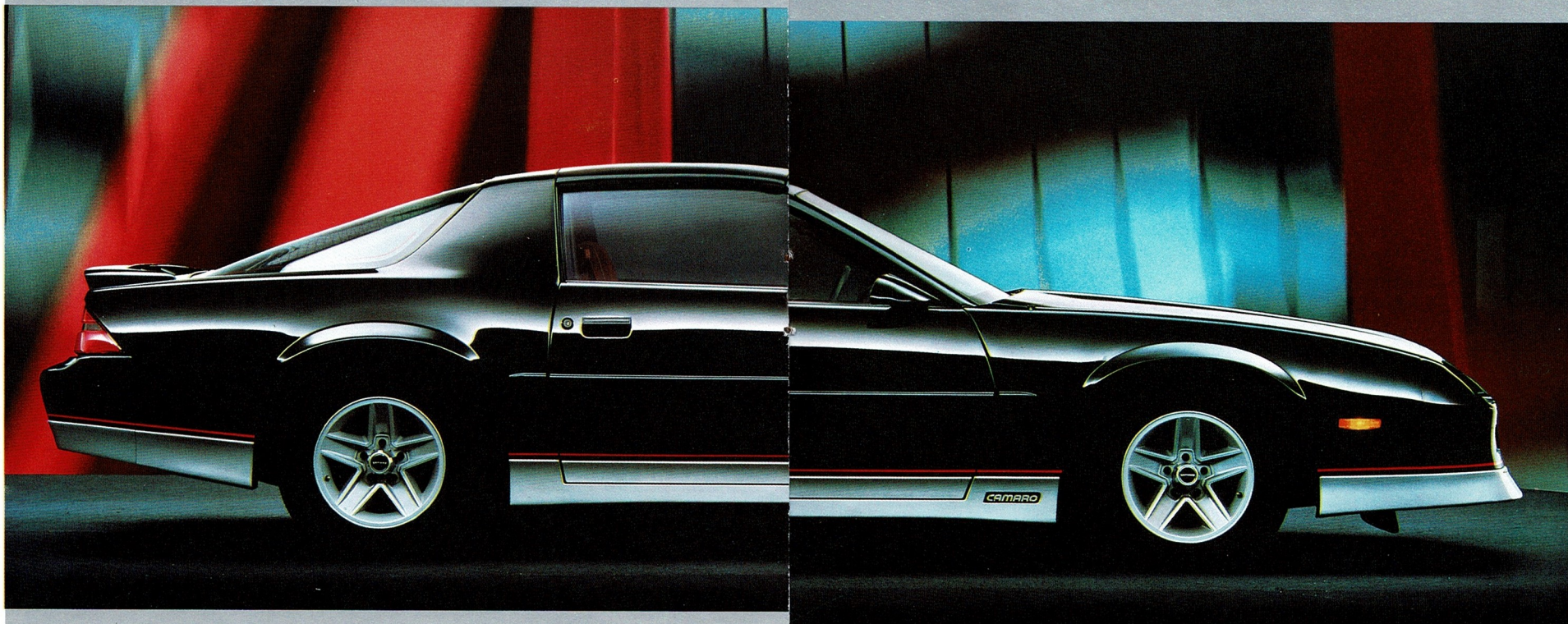
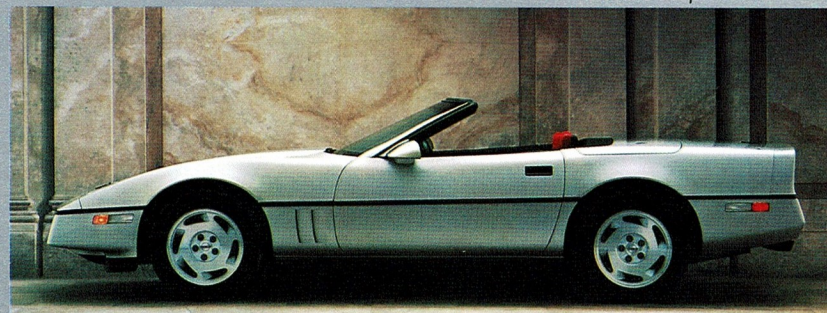
This year the Camaro Sport Coupe gets "Z" style, the IROC-Z gets more horsepower (with optional 5.7 Liter V8), and there's a handsome IROC-Z Convertible in the Camaro lineup. The legendary Corvette continues to offer world-class handling and performance—and luxury-class comforts and appointments. Beretta is best described as the sleek, new, personal coupe that's shaped for tomorrow.

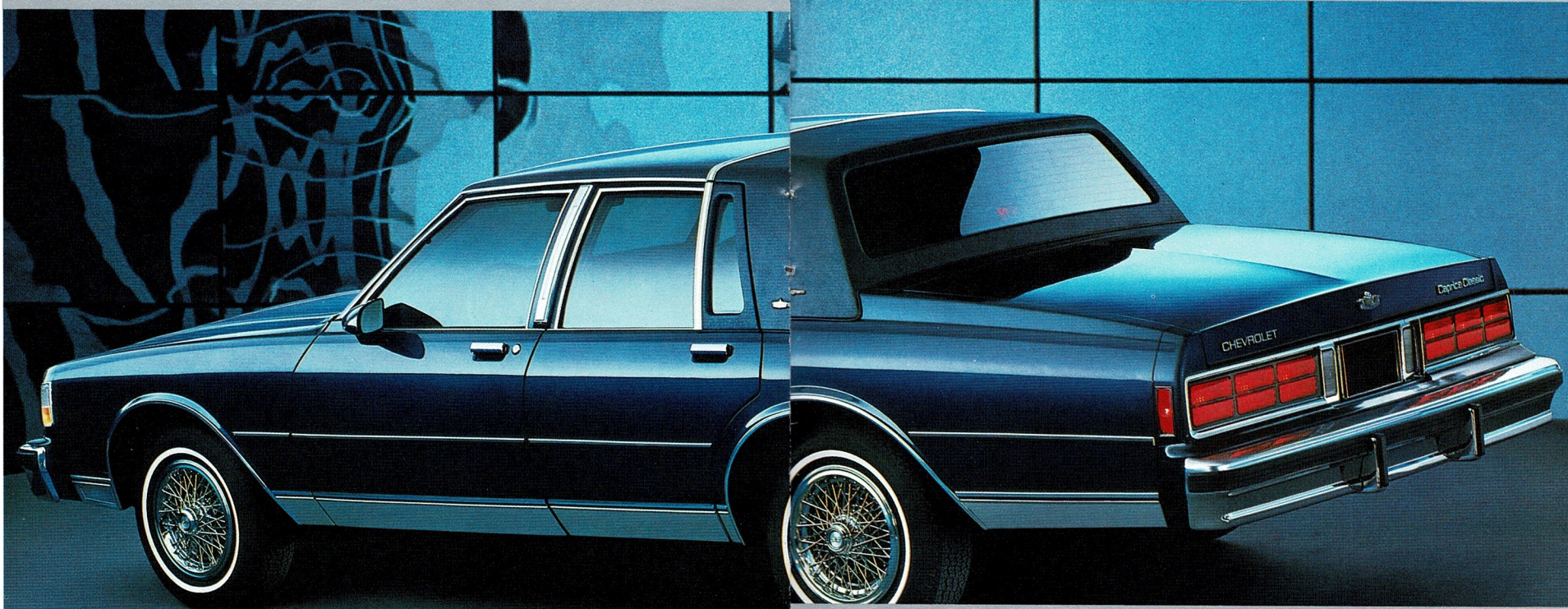
Sport Coupe, the most popular Camaro, has a hot new look for '88. Plus a 2.8 Liter V6 with Multi-Port Fuel Injection, 5-speed transmission and full instrumentation.



Ominously elegant, Corvette Convertible has the same 5.7 Liter V8 with Tuned-Port Fuel Injection as the Corvette Coupe.

The definitive Beretta experience: the GT with optional Z51 Performance Handling Package which offers rally-tuned suspension, 15" styled steel wheels and more.





Caprice Classic Brougham LS is the crème de la crème Chevrolet. Caprice Classic is also available as an Estate Wagon with standard seating for up to eight.

Caprice Classic Brougham LS

The classic full-size car, completely uncompromised—that's Chevrolet Caprice for 1988. Caprice continues to provide the true six-passenger spaciousness you desire with the comfort and quiet you expect from a luxury sedan. Fundamentals of Caprice also include full-frame construction, proven rear drive and a big 116" wheelbase. Best of all, Caprice delivers all this at a Chevrolet price.

Chevrolet's finest interior, the Brougham with optional leather seating surfaces, offers plush accommodations for six and front and rear center armrests.



Suburban, G30 Sportvan, Extended Cab Full-Size Pickup

Full-size comfort is as much a part of the Chevy truck story as it is Chevy cars. Especially when you order optional seating in the Chevy trucks shown here. Suburban, America's Superwagon, offers stretch-out comfort for up to nine people. The Chevy G30 Sportvan goes Suburban three better and accommodates up to 12 people. Even the Chevy Extended Cab Full-Size Pickup can seat up to six.

A properly equipped Series 20 Suburban can move up to 16,000 lbs., including vehicle, trailer, passengers, cargo and equipment.



The Extended Cab Full-Size Pickup offers two- or four-wheel-drive models, a choice of three interior/exterior trim levels and standard V6 or optional V8 power.



G30 Sportvan is the serious people-mover, cargo-hauler and trailering vehicle. It has optional seating for up to 12 and an optional 5.7 Liter V8 gasoline engine with Electronic Fuel Injection.



Full-Size Pickup, Crew Cab, Chevy Van, Astro Van

Chevy trucks have been a vital part of the American work force since 1918, and 1988 should prove no different. The 1988 Full-Size Pickup, Crew Cab, Astro Van and Chevy Van all offer American business and industry the kind of truck toughness, performance and serviceability expected of a leader. See your Chevy dealer for details on any of these hardworking, good-looking trucks and vans.



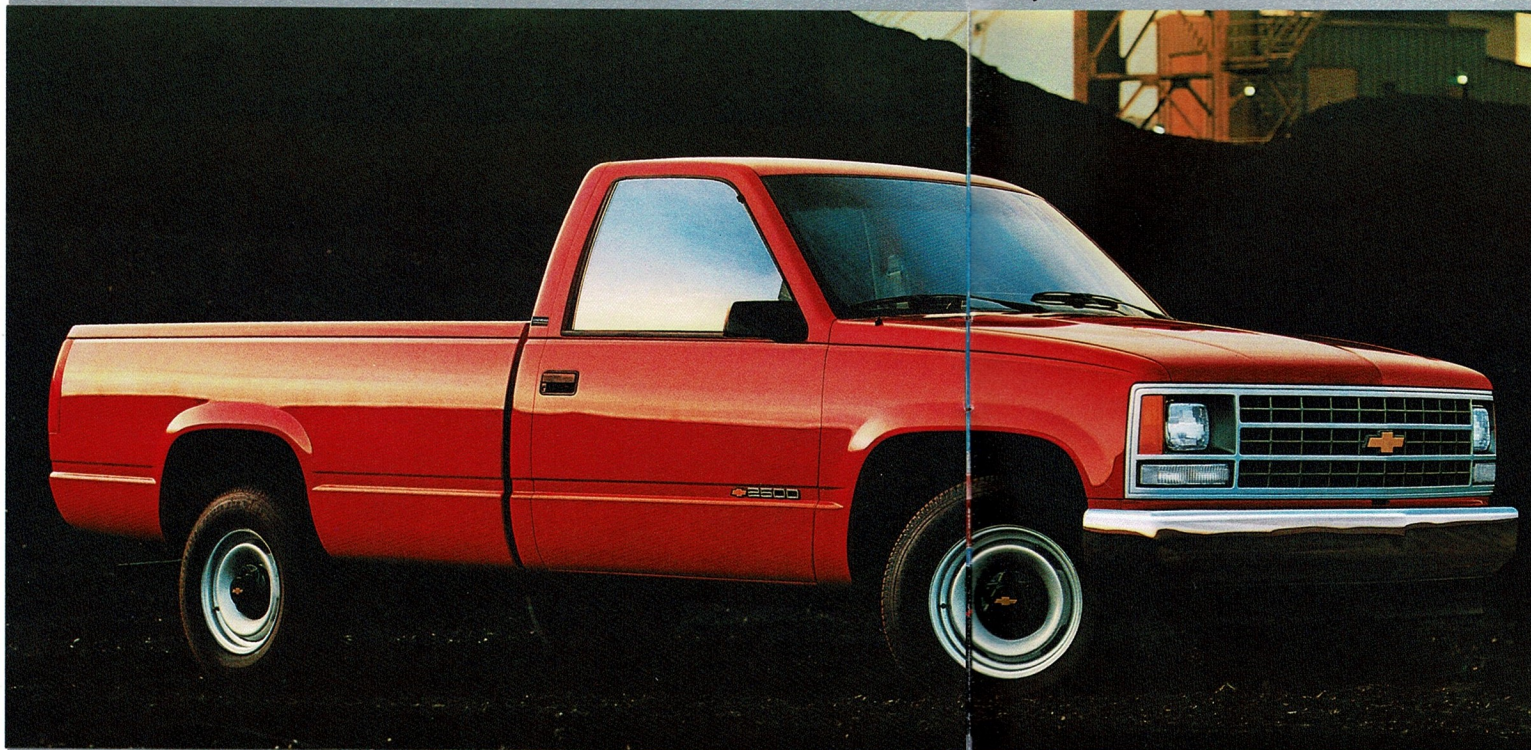
Crew Cab.



Astro Van.



Chevy Van.



Full-Size Pickup.

Important: A Word About This Catalog.

We have tried to make this catalog as comprehensive and factual as possible. However, since the time of printing, some of the information may have been updated. Also, some of the equipment shown or described throughout this catalog is available at extra cost. Your dealer has details and, before ordering, you should ask him to bring you up to date. The right is reserved to make changes at any time, without notice, in prices, colors, materials, equipment, specifications and models. Check with your Chevrolet dealer for complete information.

A Word About Engines.

Chevrolets are equipped with engines produced by GM or suppliers to GM worldwide.

GM Protection Plan.

The GM Protection Plan offers service protection in addition to that provided by GM's new-vehicle limited warranty. Ask your dealer about it. Coverage available only in U.S. and Canada.