

1 9 9 0

# PLYMOUTH HORIZON





**Horizon America**, shown in Colorado Red Clear Coat, shown below in Charcoal Gray Metallic Clear Coat. Also shown on cover in Light Spectrum Blue Metallic Clear Coat.



**About this catalog.** We have tried to make this catalog as complete as possible. However, since the time of printing, some of the information you'll find here may have been updated. Your dealer has details, and you should ask him for current information before ordering.

Some of the equipment shown or described throughout this catalog is available at extra cost.



## Plymouth Horizon America... proven value leader.

Horizon America is qualitywise, streetwise, and valuewise, with a long list of standard features. You get front-wheel drive traction, a powerful 2.2-liter EFI (electronic fuel injection) engine, and room for five with hatchback versatility. There's a **new standard console** and the **newly designed instrument panel** places heater and air conditioning

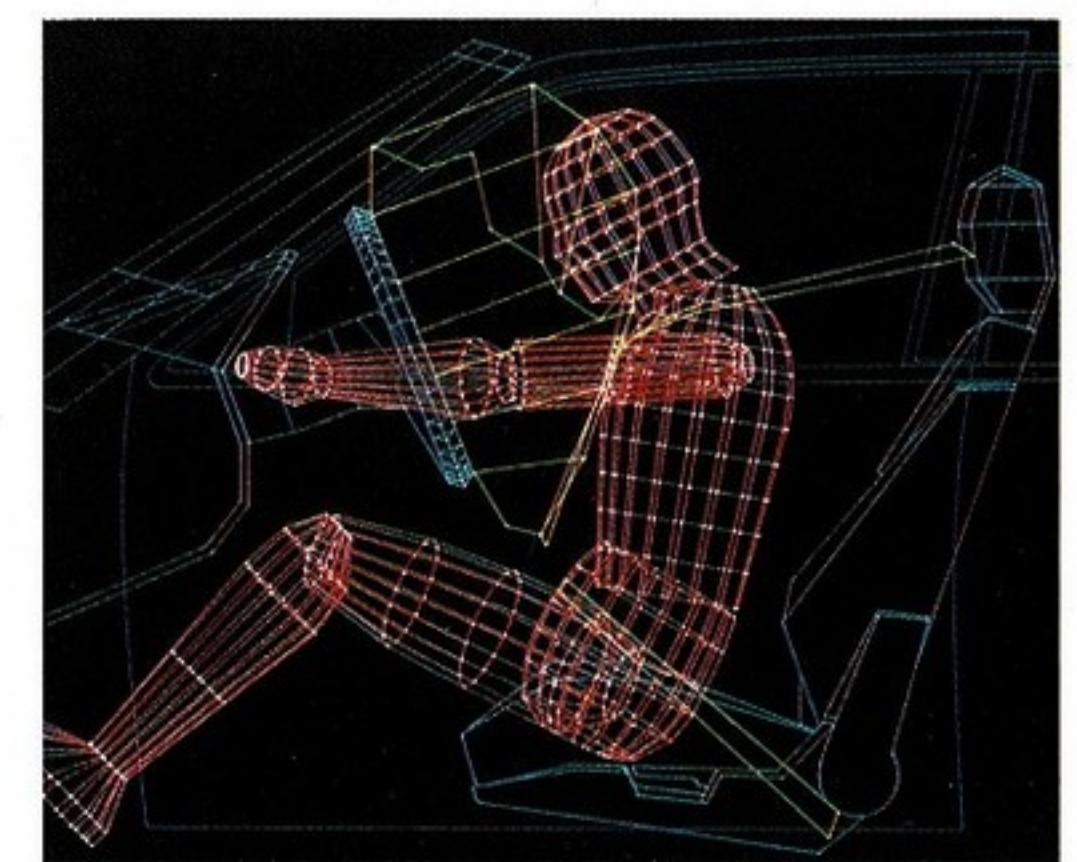
controls in the center, within easy reach. Horizon's available high-back cloth **sport bucket seats** with

vinyl trim are shown in Twilight Blue. The Allstate Safety Leadership Award was presented to Chrysler

Corporation in recognition of its industry leadership position in the



*Smart*



application of **driver-side air bags**. New energy-absorbing steering column and padded knee bolsters give further protection.\*

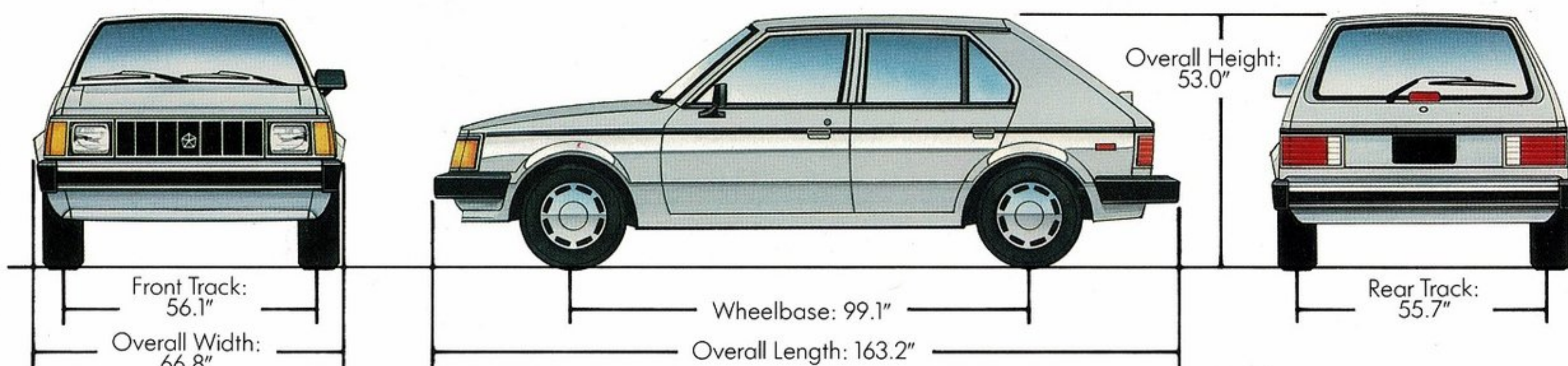
\*See page 4 for more information about safety features.



# HORIZON AMERICA OPTIONS

## TECHNICAL

### HORIZON AMERICA DIMENSIONS



### DIMENSIONS

Height (in.)	53.0
Length (in.)	163.2
Width (in.)	66.8
Wheelbase (in.)	99.1
Rear Track (in.)	55.7
Front Track (in.)	56.1

### SPECIFICATIONS

Turning Diameter (curb-to-curb)	35.5' left 37.5' right
Curb Weight (est)	2,296 lb
Cargo Capacity	
— with rear seatback raised	15.6 cu ft
— with rear seatback lowered	33.0 cu ft <sup>1</sup>
Passenger Capacity	5
Fuel Capacity	13 gal
Trailer Towing Capacity <sup>2</sup>	2.2-liter engine 1,000 lb with manual transaxle 1,500 lb with auto-matic transaxle

<sup>1</sup>With standard low-back bucket seats; 36.6 with optional high-back bucket seats.  
<sup>2</sup>Based on towing a trailer on reasonably level roads and in moderate temperatures.

### STANDARD SAFETY FEATURES

■ Backup lights ■ Brake fluid pressure loss warning light (also serves as indicator when parking brake is applied) ■ Combination lap-shoulder belts for all outboard passengers; lap belt for rear center seat ■ Double ball-joint rearview mirror mount ■ Driver-side air bag passive restraint system with knee bolsters ■ Dual braking system with separate brake fluid reservoirs in the master cylinder ■ Energy-absorbing front seatbacks ■ Energy-absorbing steering column ■ Energy-absorbing sun visors ■ Fade-resistant front disc brakes ■ Front seat head restraints ■ Hazard-warning flasher system ■ Ignition and steering column lock ■ Inside and outside rearview mirrors ■ Key-left-in-ignition warning ■ Non-override door locks (except driver's door) ■ Safety glass ■ Safety-Rim wheels ■ Seat belt reminder system ■ Seatback latches on folding front seats ■ Side door beams ■ Side marker lights and reflectors ■ Supplemental center high-mounted stoplight ■ Turn signals with lane-change feature

### MILEAGE\*

25 EPA est. city mpg, 34 EPA est. hwy. mpg

\*Mileage figures based on base model standard engine with 5-speed manual overdrive transaxle.

### POWER TRAIN CHART<sup>1</sup>

TYPE	DISPLACEMENT	BORE & STROKE	COMPRESSION RATIO	HORSEPOWER	TORQUE	TRANSAXLE AVAILABILITY
				SAE NET @ RPM		
4-cylinder EFI: standard	2.2-liter (135 CID)	3.44" × 3.62"	9.5:1	93 hp @ 4,800 rpm	122 lb-ft @ 3,200 rpm	5-speed manual overdrive (2.55 OTGR): standard 3-speed automatic (2.78 OTGR): optional <sup>2</sup>

OTGR—Overall top gear ratio.

<sup>1</sup>California emissions controls and testing are required at extra cost on all vehicles registered in California; not available otherwise.

<sup>2</sup>Basic or Automatic Transaxle Discount Package required.



**Electric rear window defroster.\*** Keeps the rear window free of ice and snow for good rearward vision and extra driving safety.



**AM stereo<sup>†</sup>/FM stereo radio** features electronic tuning, Dynamic Noise Reduction<sup>‡</sup>, cassette tape player, two-speaker system.



**Air conditioning<sup>§</sup>** with upper-level ventilation and manual control. The redesigned air duct system for 1990 improves air flow by 10 percent.

\*Required on all vehicles registered in New York state.

<sup>†</sup>Some AM stereo broadcasting may not be compatible with this radio.

<sup>‡</sup>Dynamic Noise Reduction is a trademark of National Semiconductor Corporation.

<sup>§</sup>There are special engine cooling requirements for field-installed air conditioning. Failure to follow these requirements may invalidate warranty. See your dealer for details.



## HORIZON AMERICA STANDARD AND OPTIONAL EQUIPMENT

FUNCTIONAL		
Alternator—90-ampere		S
Battery—430-ampere, maintenance-free; integral test indicator		S
Brakes—Power-assisted dual braking system split diagonally; front disc; self-adjusting rear drum		S
Coolant Overflow Reservoir		S
Electronic Ignition, Voltage Regulator, and Fuel Injection		S
Emissions Controls and Testing—Required at extra cost on all vehicles registered in California (not available otherwise)		O
Engine and Systems—See Power Train Chart		—
Exhaust System—“Stainless Pentasteel” Exhaust: extended system life		S
Front-Wheel Drive		S
Fuel Fill—Curbside fuel filler door; fuel cap tether		S
Insulation—Hood pad		S
Spare Tire—Compact: limited-service		S
Spare Tire—Conventional		O
Steering—Rack-and-pinion (overall gear ratio 22:1): manual		S
Steering—Rack-and-pinion: power-assisted (18:1 ratio)		P
Suspension—Front: Iso-Strut; surrounding coil springs; linkless antisway bar		S
Suspension—Rear: trailing arm with coil springs, semi-independent		S
Tires—P165/80R13 steel-belted radial black sidewall (set of four)		S
Tires—P165/80R13 steel-belted radial white sidewall (set of four)		O
Transaxle—See Power Train Chart		—
Underhood Service Item Identification—Engine coolant overflow bottle cap, engine oil fill cap, engine oil dipstick, power steering fluid reservoir cap, windshield washer fluid bottle cap		S
EXTERIOR		
Bracket—Front license plate: standard where required		NC
Corrosion Protection—Urethane protective coating on lower body panels; extensive use of galvanized steel		S
Glass—Tinted: all windows		O
Headlights—Halogen		S
Lights—Side marker with reflectors		S
Mirrors—Left remote control: black		S
Mirrors—Right remote control: black		P
Stoplight—Supplemental: center, high-mounted		S
Wheel Covers—Deluxe: 13-inch (set of four)		S
Wheels—Rallye: 13-inch with bright hub, trim ring and lug nuts (set of four)		P
INTERIOR		
Air Bag System—Driver-side		S
Air Conditioning <sup>1</sup> —Manual (tinted glass and conventional spare required)		O <sup>2</sup>
Buzzers—Key-in-ignition; fasten seat belt; headlights on		S
Carpet—Passenger compartment: color-keyed		S
Carpet—Trunk floor: form-fitted		P
Cigar Lighter		S
Coat Hooks—Rear		S
Console—Includes shift lever housing, cubby box, ash receiver light and switch for rear wiper/washer		S
Defroster—Rear window: electrically heated (required on all passenger vehicles registered in New York state)		O
Floor Mat—Cargo compartment		S
Floor Mats—Front and rear		P

INTERIOR (con't.)		
Heater/Defroster		S
Hood Release—Inside		S
Instrument Cluster—Electromechanical: includes speedometer, tachometer, odometer, trip odometer; gauges for electrical system voltage, engine coolant temperature, oil pressure, fuel level; warning lights for brake system, check engine, fasten seat belts, high beams on, low engine oil pressure, parking brake on, turn signals		S
Instrument Panel—Soft top cover and pad: color-keyed		S
Lights—Dome, trunk/cargo, glove box, ash receiver		S
Mirrors—Rearview day/night; passenger side visor vanity		S
Multifunction Control Lever—Mounted on steering column: headlight dimmer, lane-change feature, turn signals, windshield wiper/washer		S
Radio—AM stereo <sup>3</sup> /FM stereo: electronically tuned; Dynamic Noise Reduction <sup>4</sup> ; integral digital clock		P
Radio—AM stereo <sup>3</sup> /FM stereo: electronically tuned; Dynamic Noise Reduction <sup>4</sup> ; cassette tape player; integral digital clock		O <sup>2</sup>
Seat—Rear: fold-down single-piece back; folding security shelf panel		S
Seat Belts—Unibelts with tension relievers and automatic retractors on front and rear outboard seats, rear seat center lap belt: color-keyed		S
Seats and Interior Trim—Cloth with vinyl trim low-back bucket seats; reclining seatbacks; adjustable head restraints		S
Seats and Interior Trim—Cloth with vinyl trim, high-back bucket seats, reclining seatbacks		P
Steering Wheel—Sport four-spoke: color-keyed		S
Washer/Wiper—Rear window		S
Windshield Wipers—Deluxe: intermittent wipe		S
S—Standard. O—Optionally available. NC—No-charge option. P—Package only. <sup>1</sup> There are special engine cooling requirements for field-installed air conditioning. Failure to follow these requirements may invalidate warranty. See your dealer for details. <sup>2</sup> Manual or Automatic Transaxle Package required. <sup>3</sup> Some AM stereo broadcasting may not be compatible with this radio. <sup>4</sup> Dynamic Noise Reduction is a trademark of National Semiconductor Corporation.		

OPTIONS PACKAGES <sup>1</sup>	Basic	Manual Transaxle Discount	Automatic Transaxle Discount
Automatic Transaxle	■		■
Power-Assisted Steering	■	■	■
Floor Mats—Front and rear		■	■
Dual Remote Mirrors		■	■
AM Stereo <sup>2</sup> /FM Stereo Radio—Electronically tuned; Dynamic Noise Reduction <sup>3</sup> ; integral digital clock <sup>4</sup>		■	■
Sport Seats—High-back bucket with reclining seatbacks, increased lateral supports: cloth with vinyl trim		■	■
Cargo Compartment Dress-Up—Includes carpet for cargo area floor, lower deck trim		■	■
Wheels—13" Rallye with bright hub, lug nuts, and trim ring (set of 4)		■	■
<sup>1</sup> Items listed are available in packages only. <sup>2</sup> Some AM stereo broadcasting may not be compatible with this radio. <sup>3</sup> Dynamic Noise Reduction is a trademark of National Semiconductor Corporation. <sup>4</sup> May be upgraded.			

## HORIZON AMERICA'S CORROSION PROTECTION

Galvanized steel body panels are coated with zinc-rich primer even before the metal is formed; and every Horizon receives a seven-step full-immersion treatment that cleans the metal surface for paint adhesion.

The body is then electrocoated with highly corrosion-resistant epoxy base coat paint primer, followed by a coat of high-gloss acrylic enamel, two coats of colored acrylic enamel, and another two coats of acrylic Clear Coat enamel. The result is a durable high-gloss finish that resists chipping, fading, and corrosion. That's why Plymouth backs your Horizon America with the unsurpassed protection of a seven-year/100,000-mile Anticorrosion Limited Warranty.\*

\*See back cover for further details.



## MOPAR® ACCESSORIES



**Bike Carrier.** Securely holds one bike of any size including touring models. Mounts with hand tools to crossbars of available Mopar roof rack.



**Sunshade Louvers.** Cools car interior, helps protect upholstery from sun. Durable, all-metal, one-piece construction. Hinged for easy window cleaning, car-wash safe. Requires outside right remote control rear-view mirror which is part of Transaxle Discount Packages.



**Fog Lamps.** Give improved visibility over ordinary lights, with 108-degree beam that minimizes glare. Made with impact-resistant, rust-free glass fiber-reinforced nylon housing.

## Optional Service Contract Coverage

Chrysler Service Contracts provide you with additional peace of mind protection for your new vehicle. Chrysler Motors offers a variety of plans to meet your needs. Plan coverage begins after your vehicle's basic warranty expires. A deductible applies. Allowances for car rental and towing are also included. See your dealer for details.



MOPAR parts are engineered by Chrysler Motors for use in your new Plymouth Horizon America. When replacement is necessary, be sure to specify MOPAR parts. Used by professional automotive technicians worldwide.

## Consider Leasing

More consumers are considering leasing as an alternative to buying. Leasing a new Plymouth Horizon America usually involves a small security deposit and a first month's lease payment. Monthly payments are usually less than financing a new car purchase. Ask your dealer for details.



## Making the best even more affordable.

Chrysler Credit offers a variety of finance programs that will help make your new Plymouth Horizon America even more affordable. These special finance and leasing programs are designed to meet the needs of today's automotive buyer. They include Gold Key Lease, America's Choice Payment Plan, College Graduate Plans, Retail Financing, and more. Ask your salesperson for details.

## Chrysler Purchase Assistance Program For The Physically Challenged

Cash reimbursements of up to \$500 are available for qualified adaptive driving devices on 1990 Chrysler Motors cars and trucks. For further information, contact your dealer or the PHYSICALLY CHALLENGED RESOURCE CENTER AT 1-800-255-9877.



## Plymouth and the U.S. Forest Service

Proud Partners in the National Forest Scenic Byways Program.

All product illustrations and specifications are based upon current information at the time of publication approval. Although descriptions are believed correct, accuracy cannot be guaranteed. Chrysler Motors reserves the right to make changes from time to time, without notice or obligation, in prices, specifications, colors and materials, and to change or discontinue models. See your dealer for the latest information.

Plymouth and MOPAR are registered trademarks, and Horizon America is a trademark of Chrysler Motors Corporation.

**Buckle up for safety.**

## HORIZON AMERICA EXTERIOR COLORS



Colorado Red Clear Coat



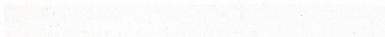
Light Spectrum Blue Metallic Clear Coat



Ice Blue Metallic Clear Coat



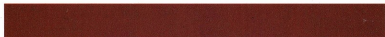
Radiant Silver Metallic Clear Coat



Bright White Clear Coat



Charcoal Gray Metallic Clear Coat



Garnet Red Metallic Clear Coat

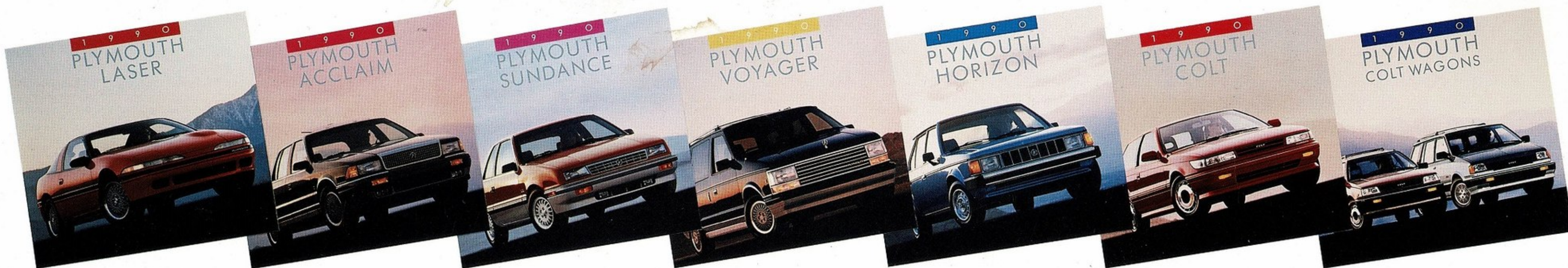
COLOR/TRIM COMBINATIONS	
HORIZON EXTERIOR	INTERIOR
Colorado Red Clear Coat	Crimson Red or Silver
Light Spectrum Blue Metallic Clear Coat	Twilight Blue
Ice Blue Metallic Clear Coat	Twilight Blue
Radiant Silver Metallic Clear Coat	Crimson Red or Silver
Bright White Clear Coat	Crimson Red, Twilight Blue or Silver
Charcoal Gray Metallic Clear Coat	Silver
Garnet Red Metallic Clear Coat	Crimson Red

NOTE: Due to printing limitations, the colors shown will vary slightly from actual hues. See your Plymouth dealer for accurate color chips.

Specifications subject to change or improvement without notice. Certain models, packages and options are subject to specific restrictions, requirements or late availability. See your dealer for latest ordering information.

Clear Coat finish is standard on every 1990 passenger car built by Chrysler Motors.





The name Plymouth will always stand for quality, plenty of standard features, and honest value. But today, car shoppers have a lot of choices. So we'd better have some darn good reasons for you to pick the new Plymouth...and we do. Plymouth Horizon for the '90s means contemporary styling, advanced technology, solid dependability, and safety-minded engineering innovations such as air bags and Unibelt shoulder restraints.

Our commitment to our customer is underscored by the latest J. D. Power survey,\* which put Chrysler Motors ahead of all other domestic manufacturers in Customer Satisfaction for the third year in a row. Even more satisfying, Plymouth's full line of vehicles increased its ranking more than any other brand, import or domestic. Plymouth believes every American has the right to friendly treatment, honest service, and competent repairs. That's the mission of our 7/70 Limited Warranty, and it's part of our Corporate philosophy. So, while there are many cars you could choose to own, Plymouth for 1990 has more of what you're looking for.

\*J.D. Power and Associates 1989 passenger car Customer Satisfaction Index of 1988 models.



### Quality Worth Backing

All Chrysler Motors domestically built automobiles and light trucks now benefit from the 7/70 Power Train Limited Warranty. Upon expiration of the 12-month or 12,000-mile Basic Limited Warranty, coverage is extended on power train components to seven years or 70,000 miles.\* This represents one of the most comprehensive original limited warranties available on cars and trucks built and sold in the United States, and points out Chrysler Motors' pride in building and backing its products the right way.

In addition to the 7/70 Power Train Limited Warranty described above, all domestically built Chrysler Motors automobiles offer the 7/100 Anticorrosion Limited Warranty. Your dealer will repair or replace at no charge outer body sheet metal panels found to have developed perforation (rust-through) in normal use up to seven years or 100,000 miles. See your dealer for a copy of the limited warranties.

\*A deductible applies.

*Lee A. Iacocca*

**Plymouth Horizon**

