

RENAULT

LAGUNA

SALOON & ESTATE



In the new Renault Laguna Saloon we sought to create a car that offers the highest levels of driving pleasure, style, practicality and safety.

However the Renault philosophy of motoring enjoyment is not simply centred on the driver's seat. It embraces the passengers as well, with every occupant able to revel in a sense of well being that comes from world-best technology and innovative ideas in space planning, ergonomics, materials and colour.

With a distinctive rear section housing tail lights that wrap around the side of the body, the new Laguna Estate creates an immediate impression of European style, solidity and purpose. There is an undeniable touring spirit about this car. It's evident in the powerful 3.0 litre V6 engine, sumptuous interior, dynamic roadholding and the spacious cargo area.

So whether you're traversing vast distances, or a quick trip across town, you'll discover that the new Laguna Estate is not only supremely comfortable and refined, it's also immensely enjoyable to drive.



ESTATE



Privilege model shown.



Privilege LX model shown.

With a distinctive rear section housing tail lights that wrap around the side of the body, the new Laguna Estate creates an immediate impression of European style, solidity and purpose. There is an undeniable touring spirit about this car. It's evident in the powerful 3.0 litre V6 engine, sumptuous interior, dynamic roadholding and the spacious cargo area.

So whether you're traversing vast distances, or a quick trip across town, you'll discover that the new Laguna Estate is not only supremely comfortable and refined, it's also immensely enjoyable to drive.



Overseas model shown.

INTERIOR



Privilege LX model shown.



Privilege LX model shown.



The cabin of every Renault is designed to appeal to the senses. In the new Laguna it's obvious in the attention to quality in every aspect of the interior—from ergonomics to colours, from seat design to sound insulation, from space planning to a multitude of ingenious interior features.

The sumptuous interior of every Laguna model is enhanced by a range of features designed to make the driving experience as pleasurable and as safe as possible.

The Cruise Control and Speed Limiter is located on the steering wheel. Trademark Satellite Audio Controls are mounted at your fingertips on the steering column. Front and rear headrests are shaped to ensure close proximity for improved protection. An On-board Computer informs you of vital information from fuel consumption, fuel economy and fuel tank range.

Some models even feature an ingeniously practical compartment and cup holder in the rear centre armrest. The Laguna Estate Privilege features Parking Assistance with sensors that inform you of the distance to the vehicle behind.

The Automatic Climate Control Centre includes separate electronic controls and temperature read-out for the driver and passenger. And, not forgetting that all Laguna Privilege models also feature front electric seats that adjust for height and tilt, Variable Power Steering, and a 120 watt hi-fi CD Sound System.

For a complete list of the Laguna's impressive features see the attached specification sheet.



Overseas model shown.

PERFORMANCE



At the heart of the new Laguna breathes a 3.0litre V6 24 valve engine that is a masterpiece of engine technology. Producing 152 kilowatts of power at 6000 rpm and 285 Nm of torque at 3750 rpm it more than adequately meets the requirements of the most enthusiastic driver or challenging driving conditions.

Perfectly coupled to an Auto-adaptive five speed automatic transmission the Laguna achieves stimulating, refined performance, remarkably modest fuel consumption and commendably low CO₂ emissions. The Auto-adaptive five speed automatic gearbox features 'sequential shift' so the willing driver can take complete control of gear changing whenever he or she feels like it.

Another innovative feature is electronic 'drive-by-wire' throttle control. Instead of clunky and inaccurate linkages the new Laguna boasts highly advanced and precise electronic sensors. This 'drive-by-wire' system not only improves the driving experience thanks to increased responsiveness, consistent pedal feel and immediate power delivery, but it also improves fuel economy and lowers exhaust emissions.



5 STAR SAFETY (ACTIVE)



The Laguna is undoubtedly designed to survive a collision but it is its ability to avoid one that makes it a truly supreme safety package.

When the road throws up any number of unexpected challenges a Laguna driver can call on an extraordinarily effective combination of electronic systems. For example all 3.0 Litre V6 models feature the Renault Electronic Stability Programme (ESP). At all times, and most obviously during critical situations, a series of sensors monitor the car's direction of travel and the position of the steering wheel. The Laguna's on board computer compares the various readings and through the combination of the car's ABS System, Engine Management System and Traction Control System (ASR) brings it back in the intended direction of travel. Of course, no active safety system can prevent every accident, particularly when excessive speed or foolhardy actions are the cause, but it is safe to say that the new Laguna sets new standards in active safety.

Naturally, the new Laguna is equipped with ABS—but the system is enhanced in two important ways. First, it is equipped with electronic brake force distribution (EBV) that automatically distributes the braking effort between wheels.

Second, Emergency Brake Assist for emergency braking is standard on every model. Emergency Brake Assist measures the speed at which the brake pedal is depressed. In case of emergency braking, it automatically increases the braking pressure to ensure the maximum possible braking efficiency from all four wheels. This extraordinary safety system can reduce stopping distances from 55 metres to as little as 37 metres at 100km/h.

And to demonstrate just how much consideration and ingenuity goes into every aspect of safety, the Renault Emergency Brake Assist system automatically engages the Hazard Warning Lights to warn other drivers of the emergency stop in progress.

Some Laguna models are equipped with other innovative safety features such as Automatic Rain Sensing Wipers and Xenon Headlamps.

Both of which ensure that the driver has a clear view of the road ahead during unexpected inclement weather.



5 STAR SAFETY (PASSIVE)



The first car in the world to score a 5-star safety rating for impact protection in the European New Car Assessment Programme (EuroNCAP) was a European model Renault Laguna 1.8Litre Saloon. Now, the car that sets new levels of driver and passenger safety is available in Australia with a 2.0Litre 4 cylinder, or 3.0Litre V6 engine.

An independent European body, EuroNCAP provides new car buyers with an independent assessment of the safety performance of some of Europe's most popular cars. In its crash test assessment the Renault Laguna 1.8Litre Saloon scored a perfect five out of five stars. In testing, the new Laguna scored full marks in side impact protection for both driver and passengers, while EuroNCAP testers went so far as to praise the Laguna's safety cell under impact loads and the lack of steering wheel intrusion into the cabin. For more information about EuroNCAP visit their website at www.euroncap.com.

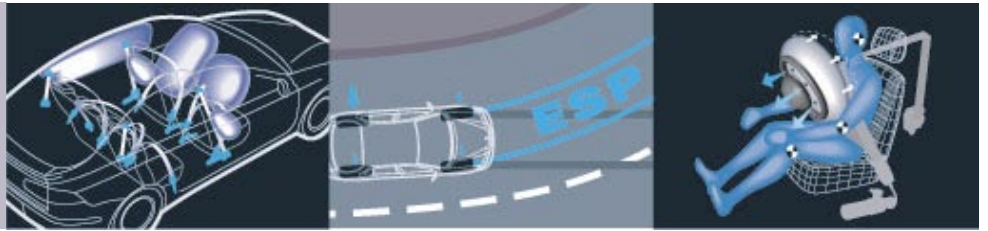
The task of creating a car that sets new standards in driver and passenger safety was undertaken by a team of engineers in the world renowned Renault Centre for Applied Research. Even the most basic principles were questioned and re-evaluated by some of the world's leading motor vehicle engineers.

For instance, the new Laguna features ultra-high elastic limit steel in its construction. This type of steel has a much greater ability to absorb impact energy than conventional materials. Computer simulation techniques have enabled the designers to precisely distribute weight and stress, to 'program' the way in which the body deforms to absorb the force of any impact. It's a fact that no two accidents are exactly the same, but the need for the maximum degree of protection is identical in every case.

So the Laguna's responses to an impact are precisely geared to the impact's severity. The acclaimed Renault System for Restraint and Protection (SRP) is integrated into the body structure and is already without equal in the industry. In the new Laguna it offers new levels of protection.



5 STAR SAFETY (PASSIVE CONT)



The most obvious safety features are the six airbags protecting both front and rear occupants. The driver and passenger front airbags feature a sensitive pressure generator that produces variable volume. They are designed to inflate in stages to limit the pressure on the occupant. If the shock is mild, the first stage of the bag inflates; if it is more severe, the second stage comes into play. In addition, front lateral airbags reduce the risk of injury in a side impact. Plus two curtain airbags offer head-level protection for occupants of both front and rear seats.

The new Laguna driver's seat belt incorporates a load limiter and two pretensioners instead of only one as found in most other cars. The outer two rear seats also feature seatbelts with load limiters and pretensioners. In the event of an accident the seatbelts lock the wearer firmly in place, the seatbelt pretensioners absorb any slack in the belt, airbags inflate and deflate to cushion the blow, then load limiters in the seatbelts deform to ease chest pressure.

Ingeniously, the pressure and tension of all these elements adapt to the shape and height of the passengers in order to protect the most vulnerable areas of the body. And even in the severest collision a complete protection program, adapted exactly to the situation, is initiated in just a few thousandths of a second.

